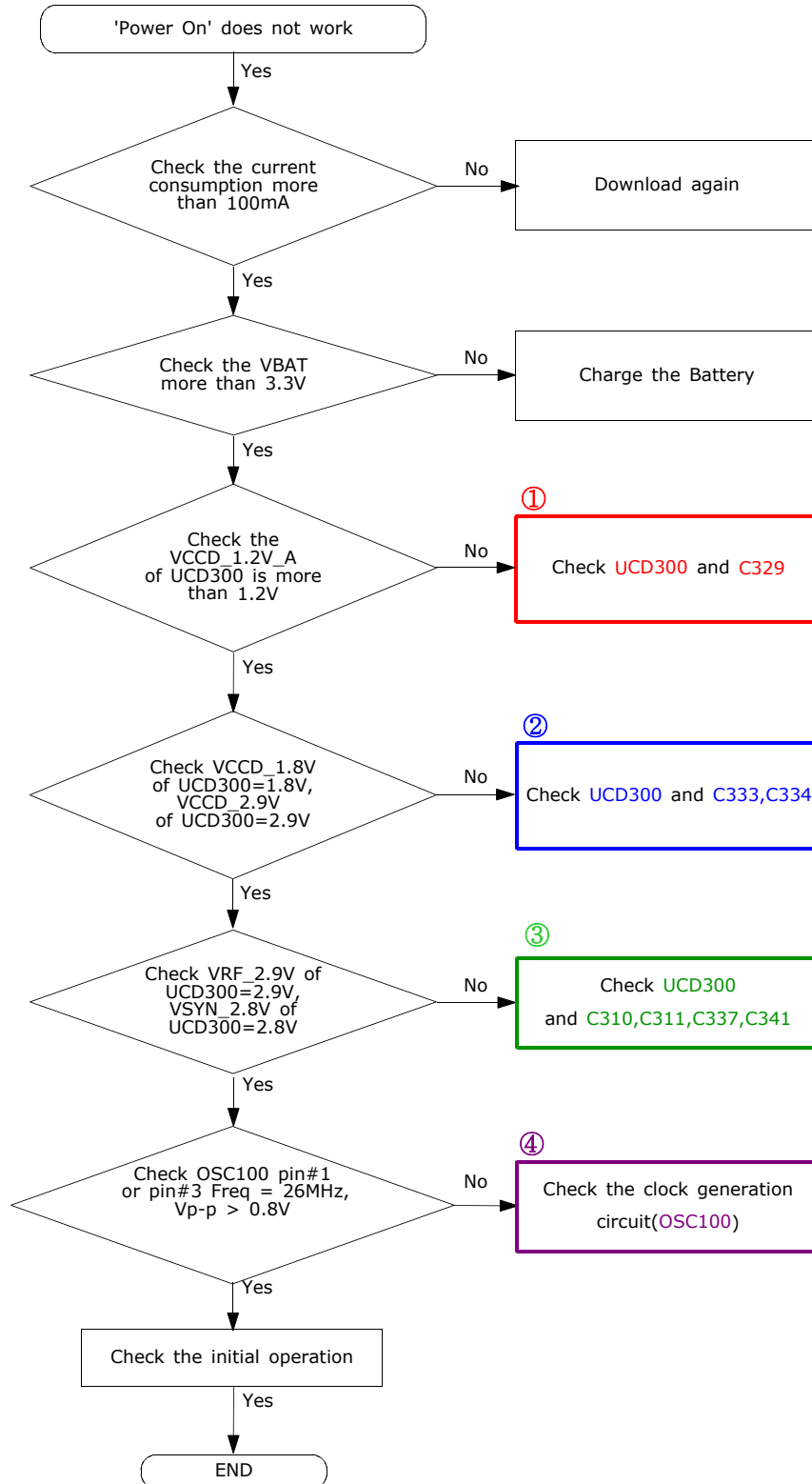
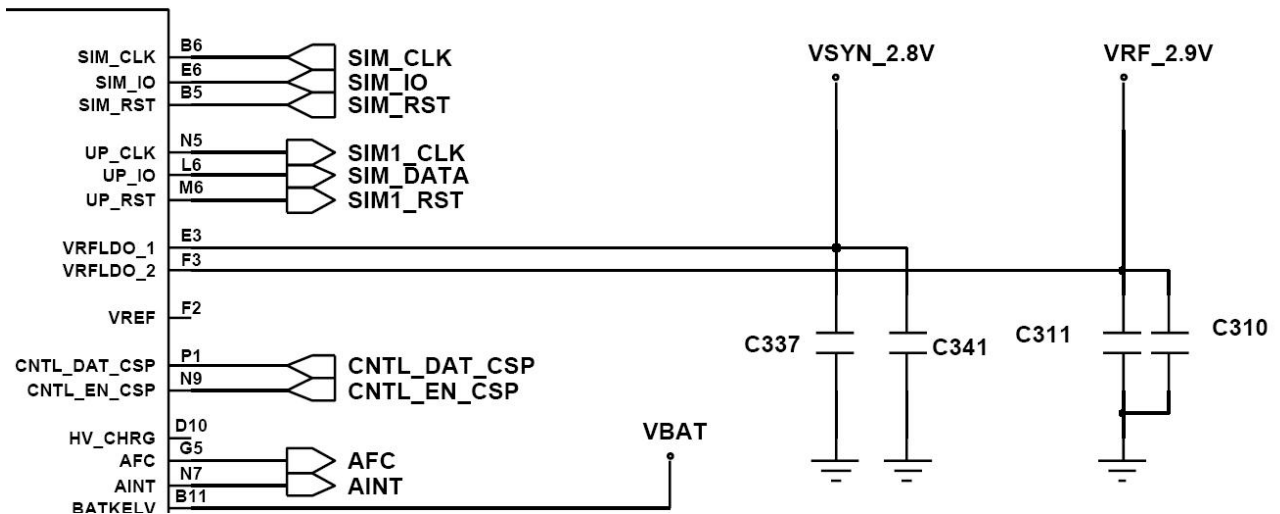
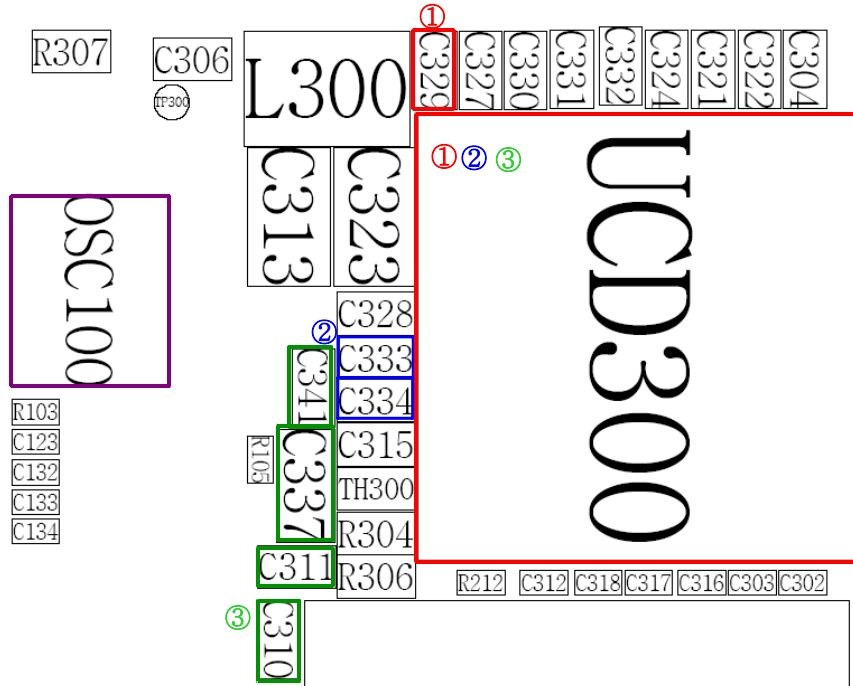


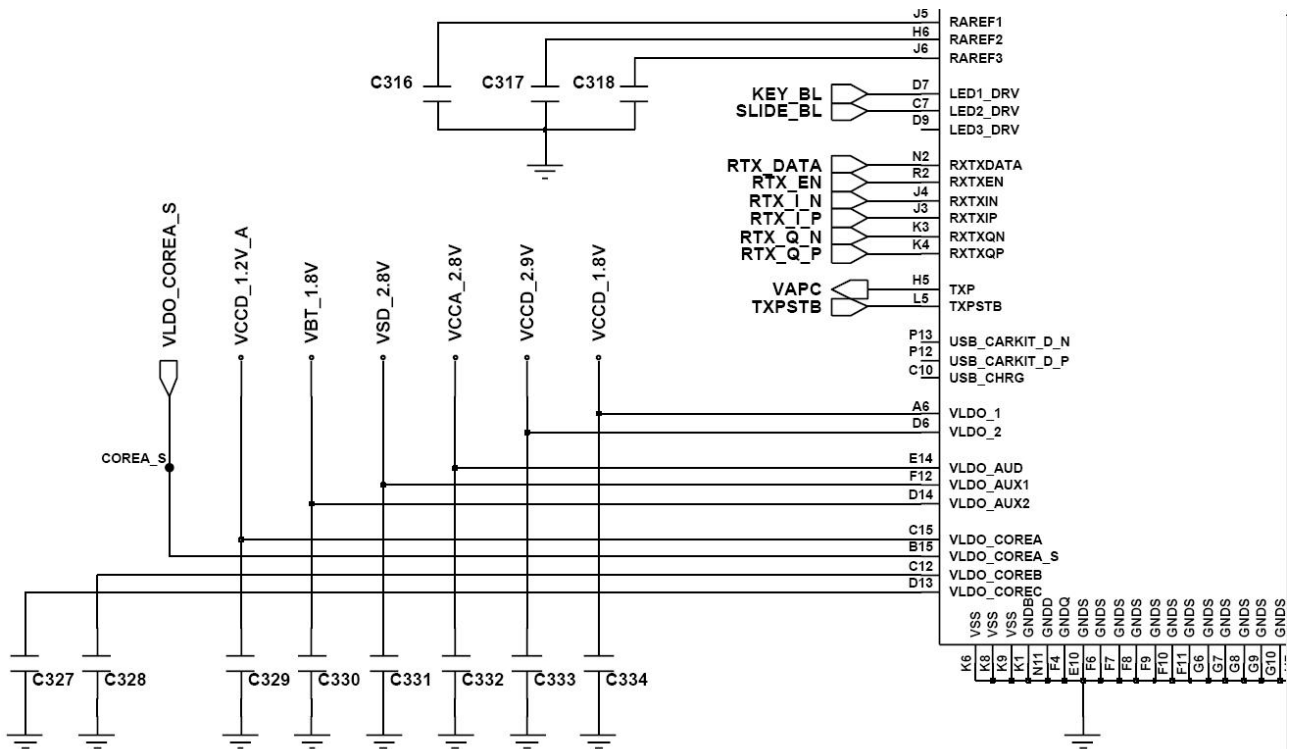
10. Flow Chart of Troubleshooting

10-1.Baseband

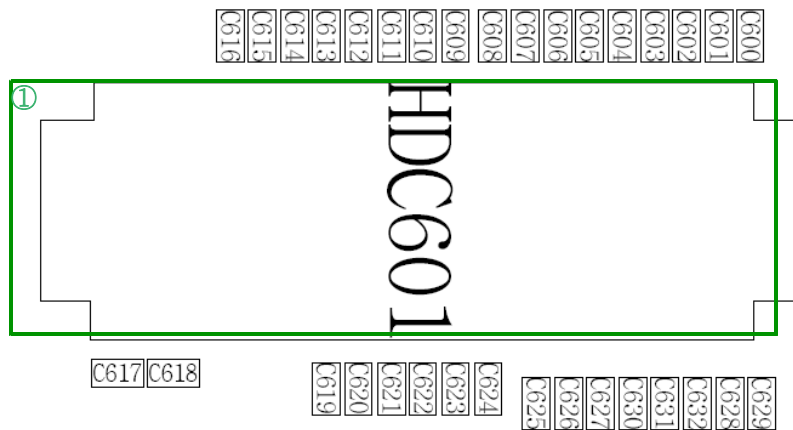
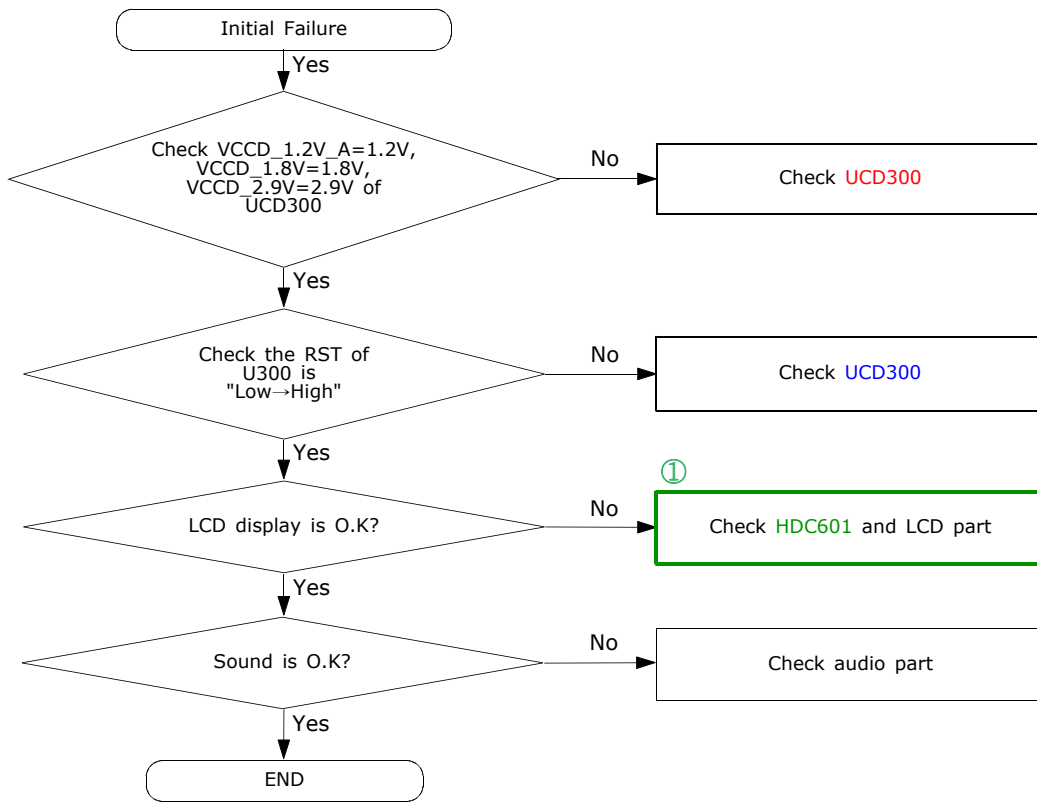
10-1-1. Power ON

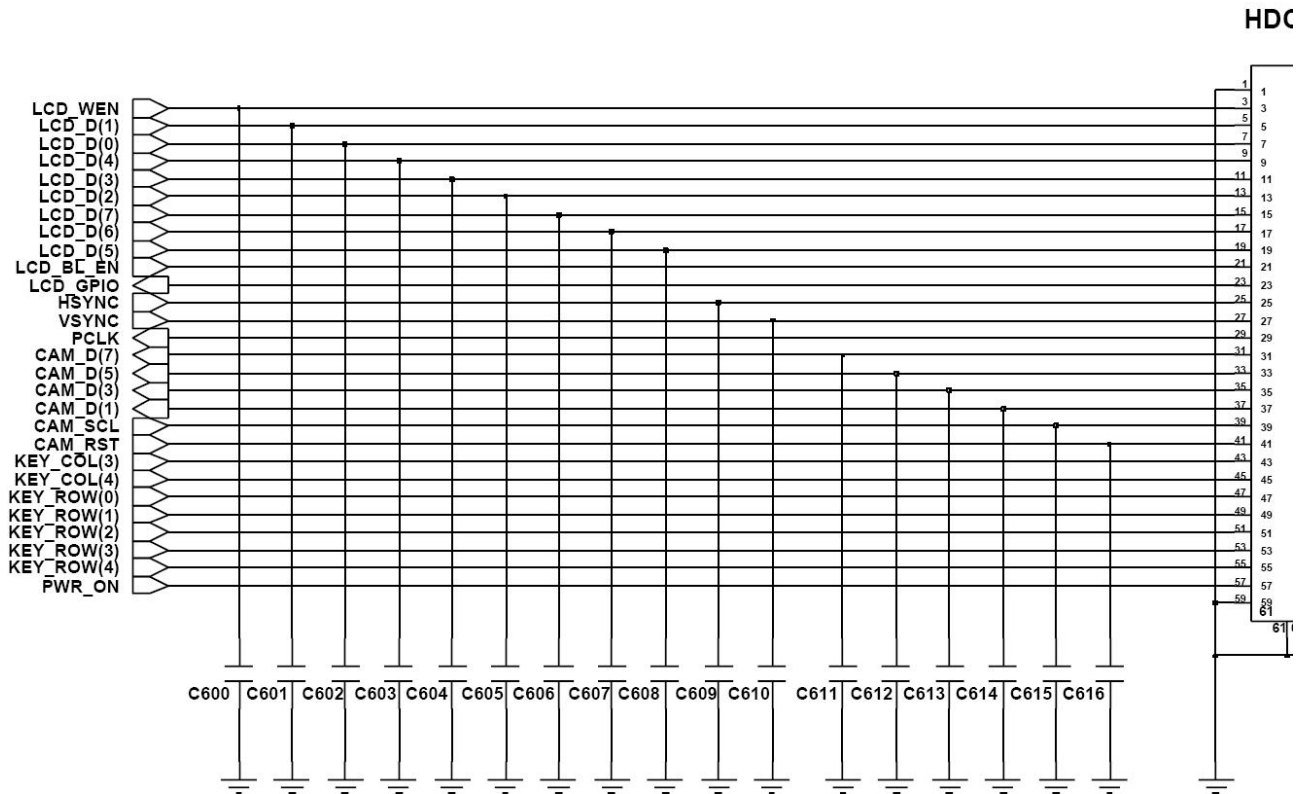


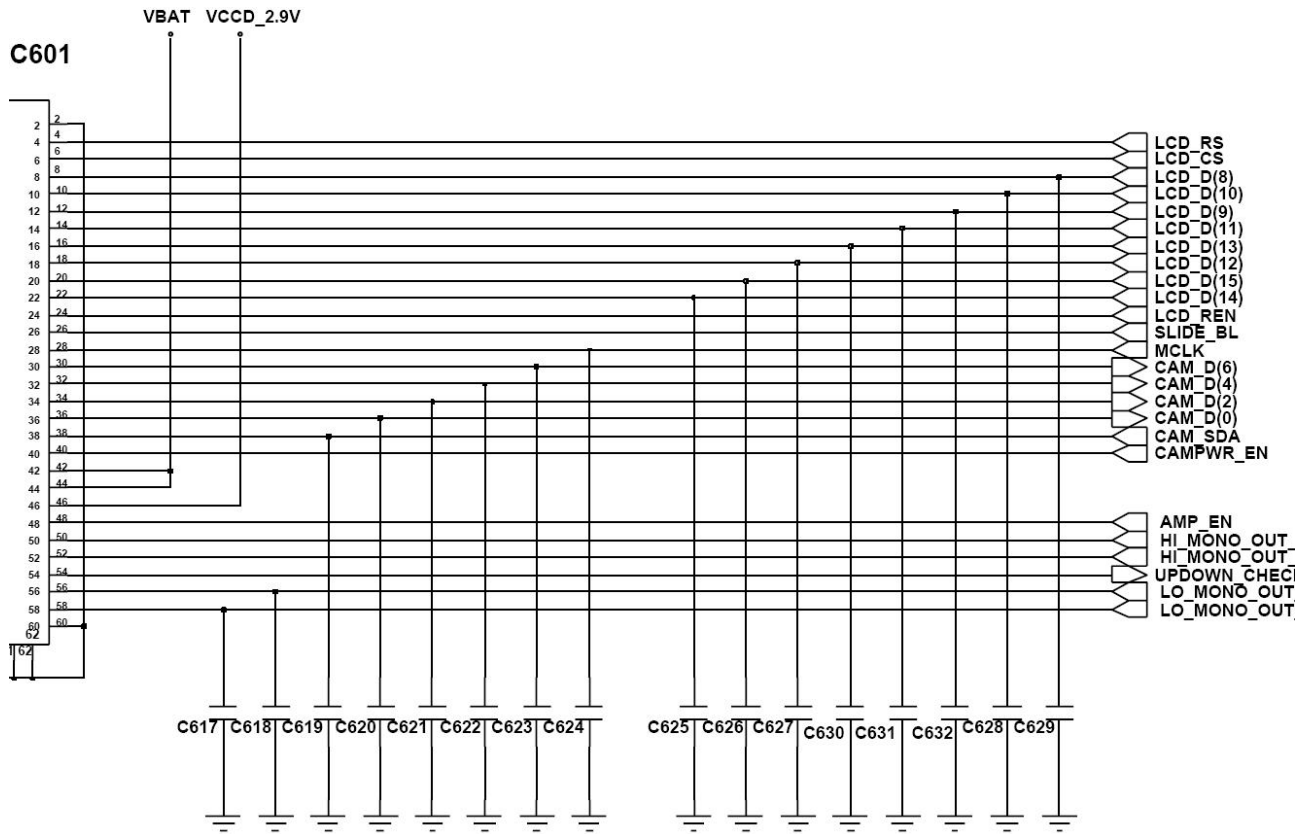




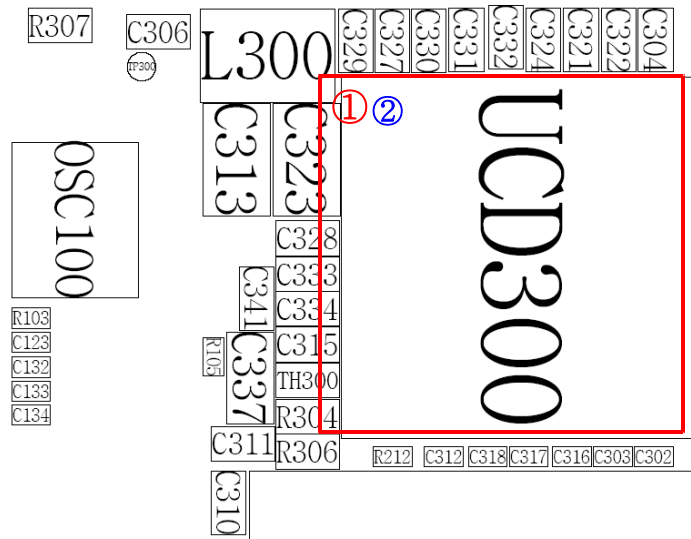
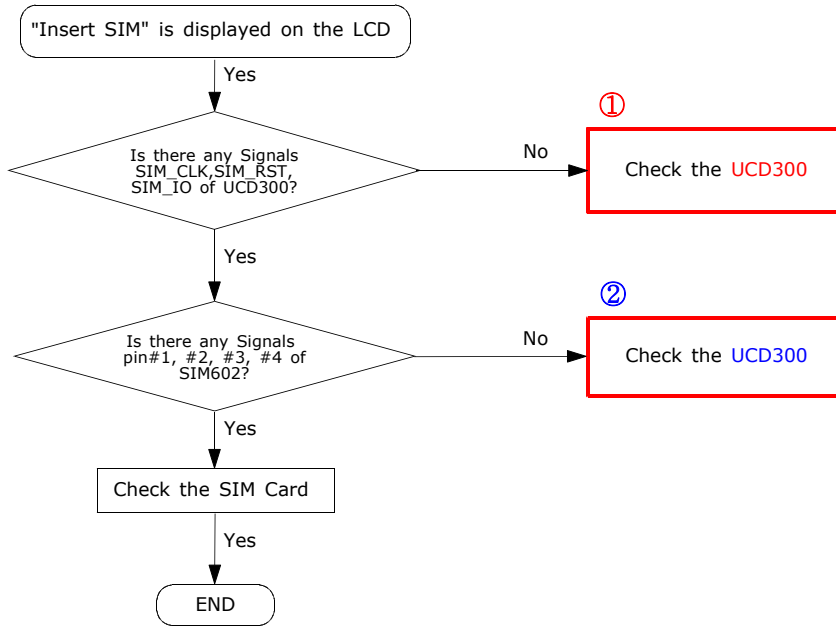
10-1-2. Initial



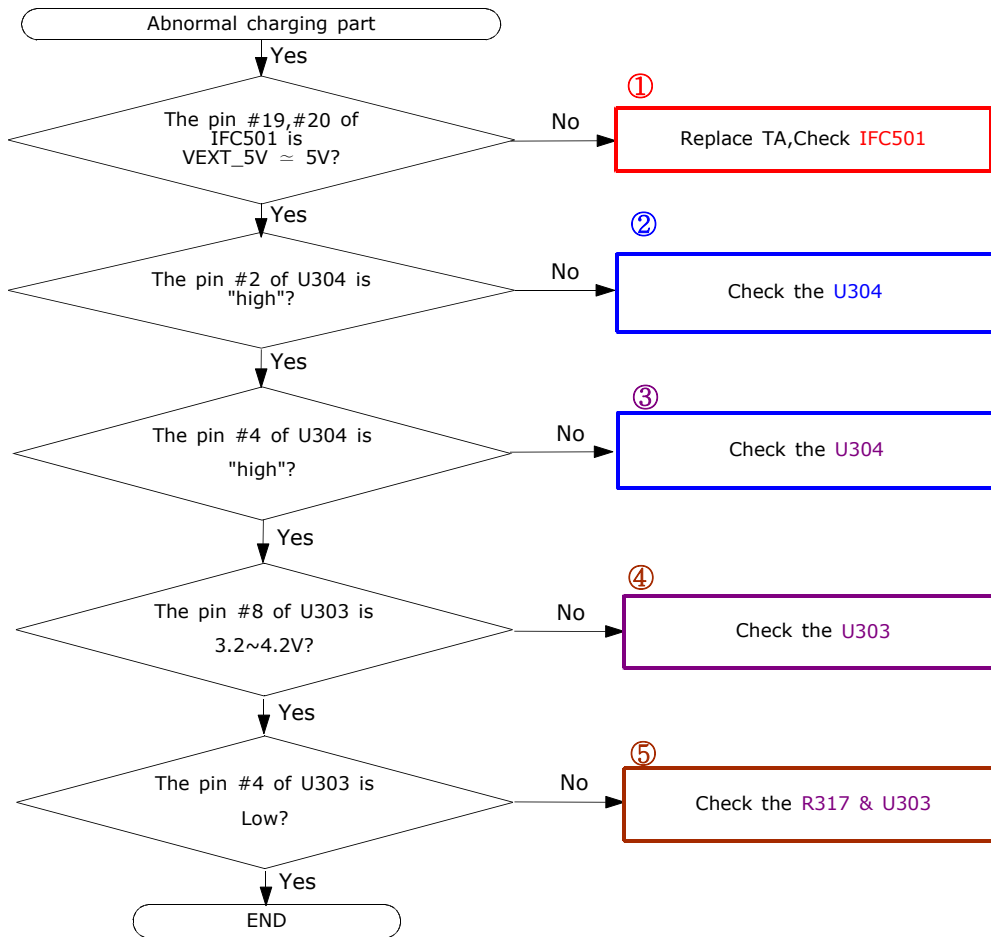


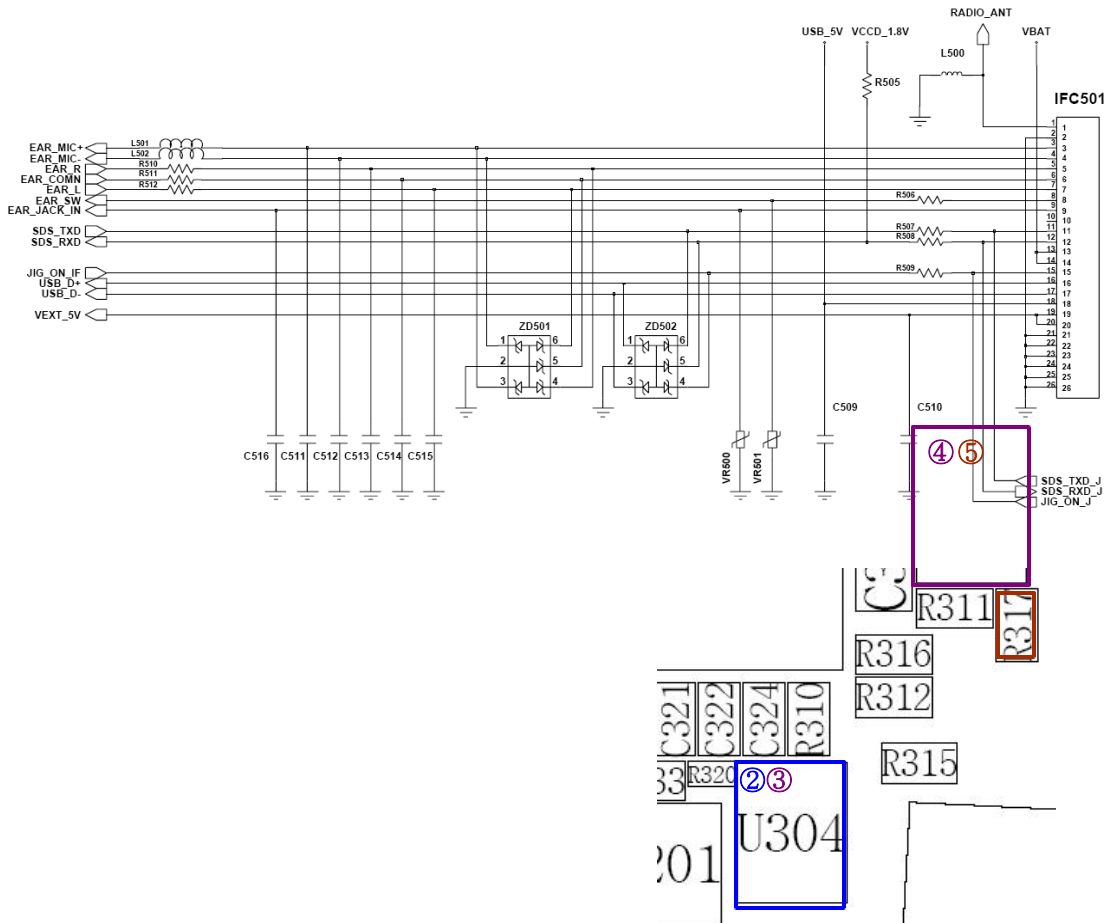
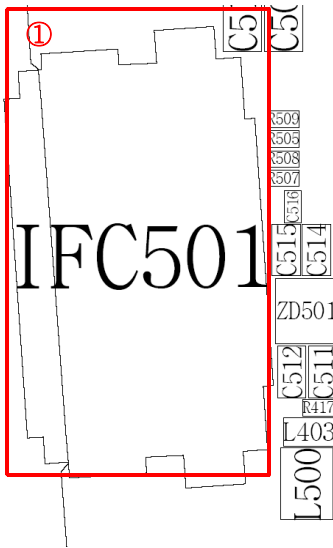


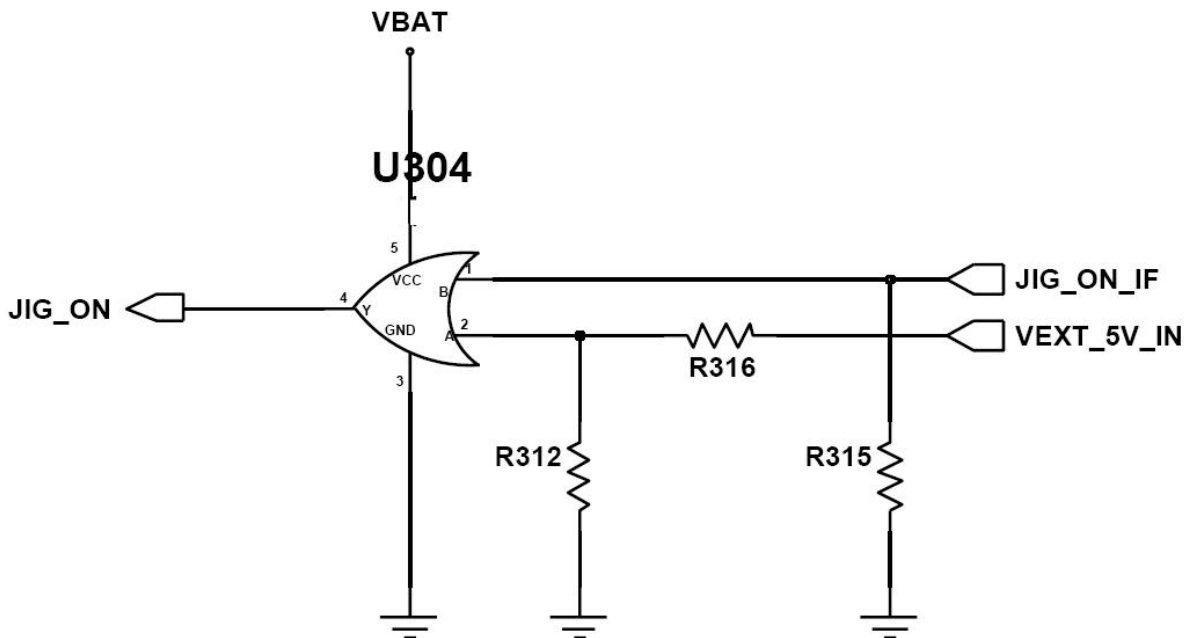
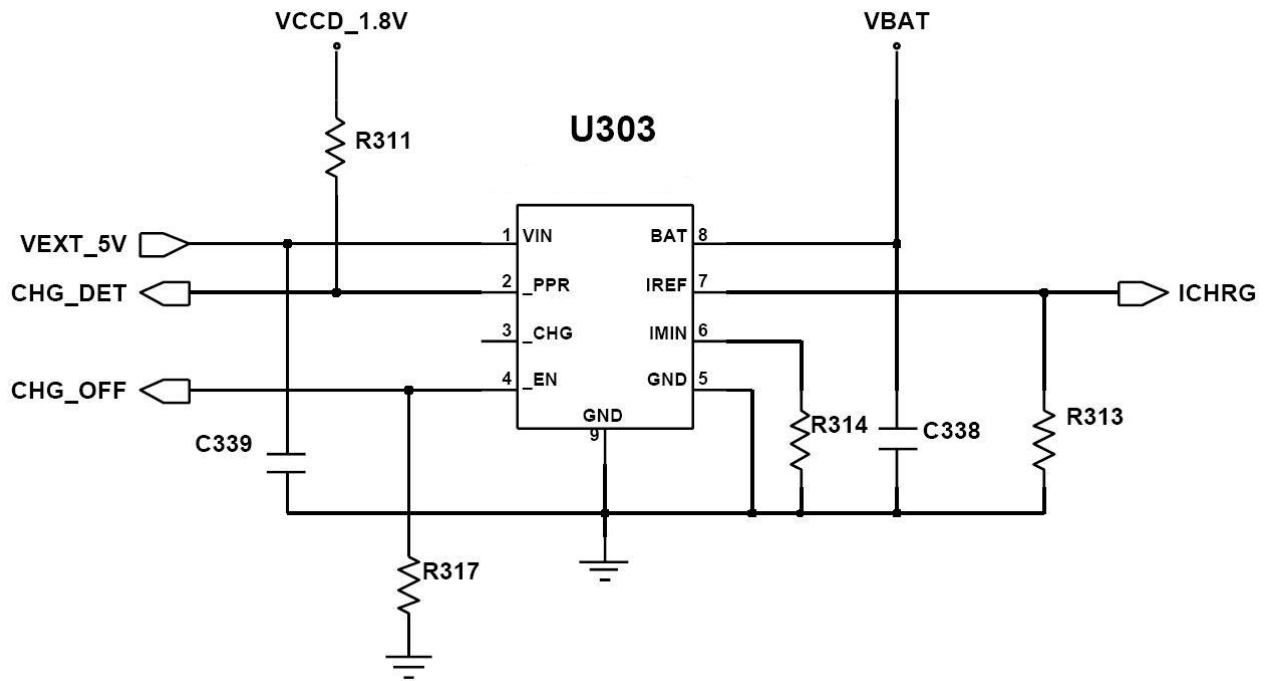
10-1-3. Sim Part



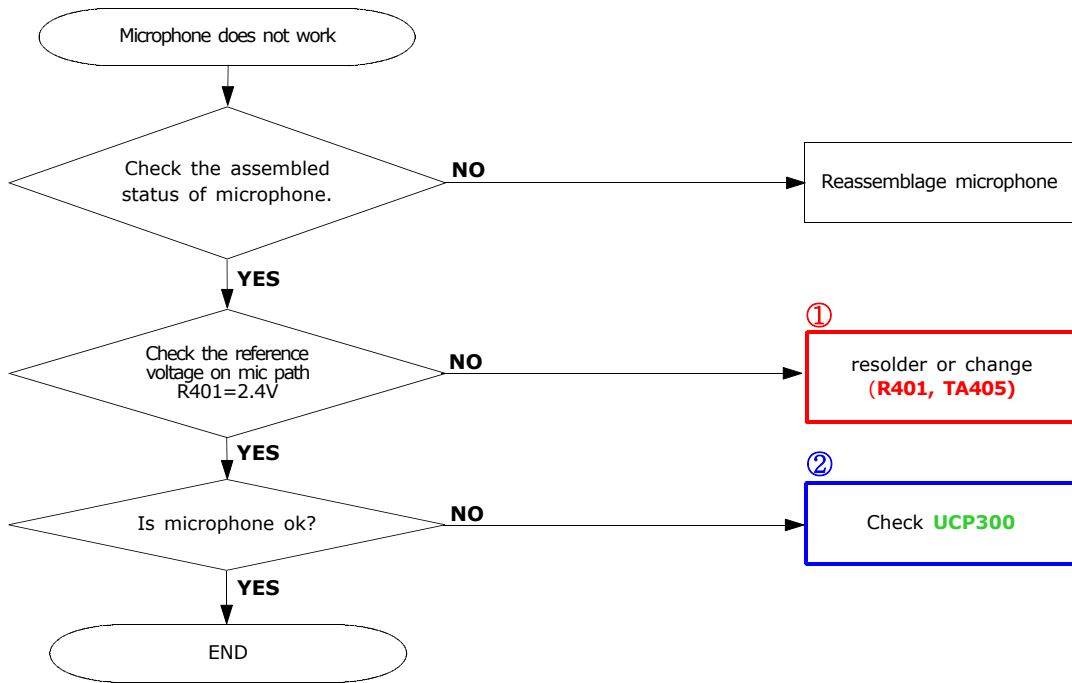
10-1-4. Charging Part

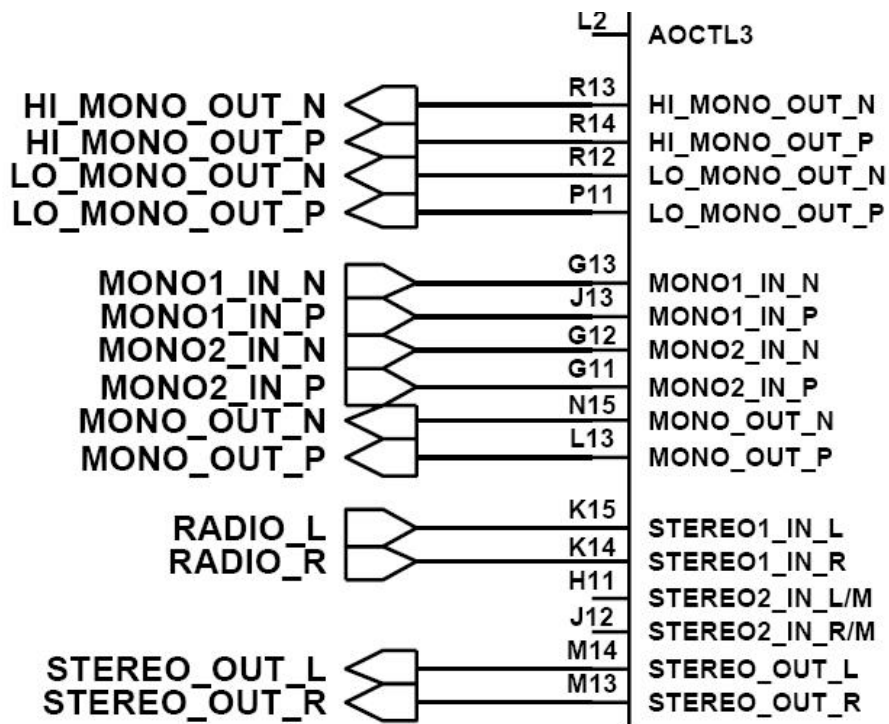
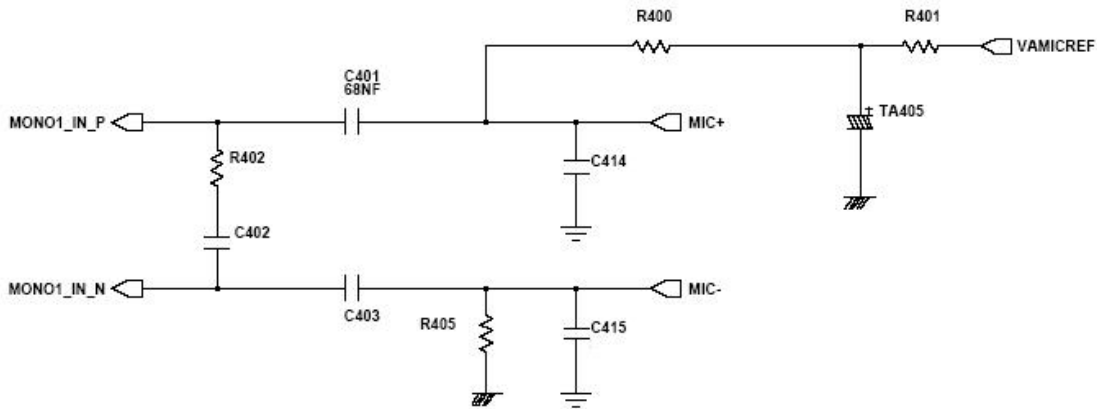




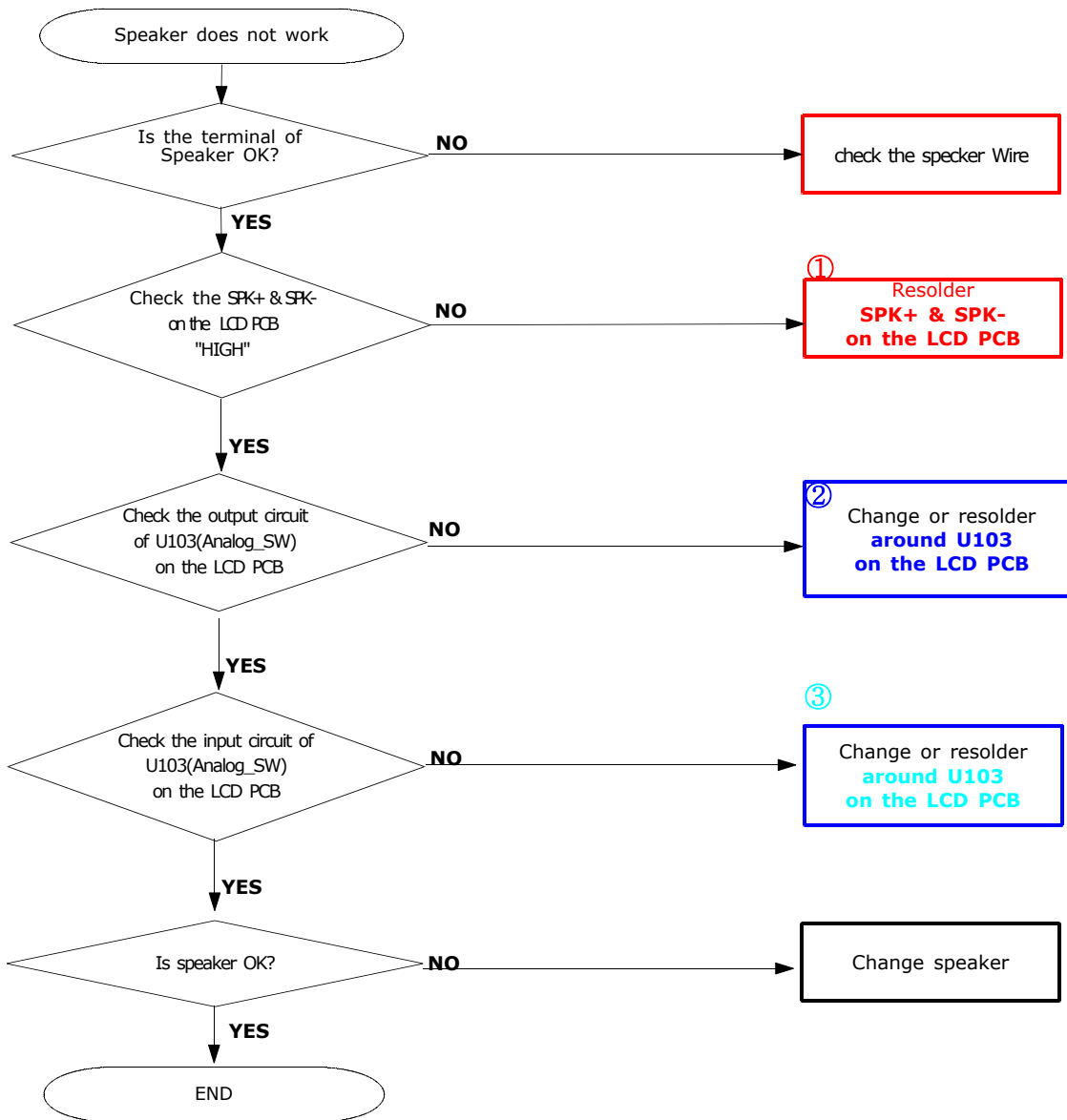


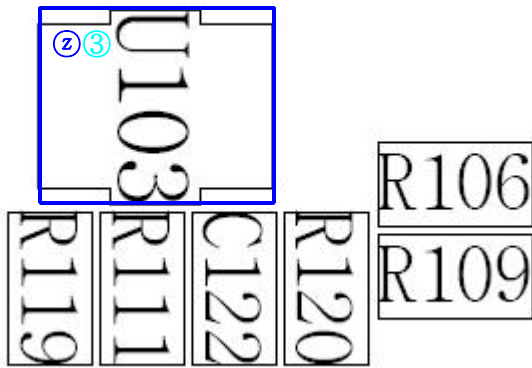
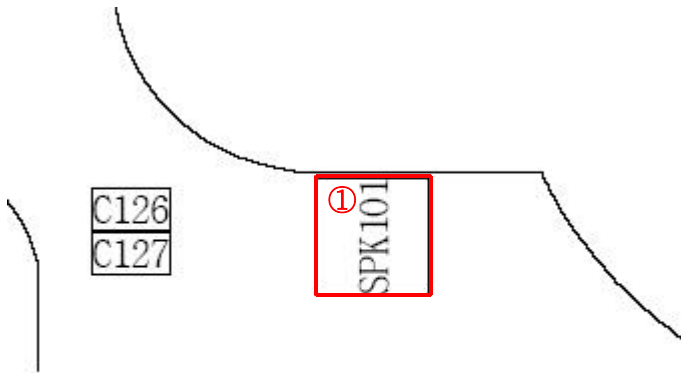
10-1-5. Microphone Part

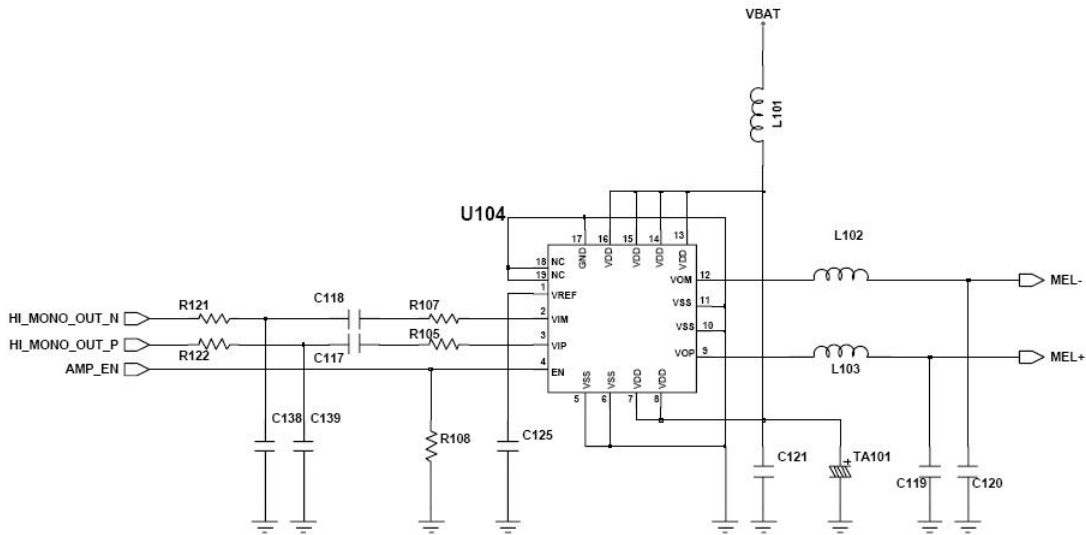
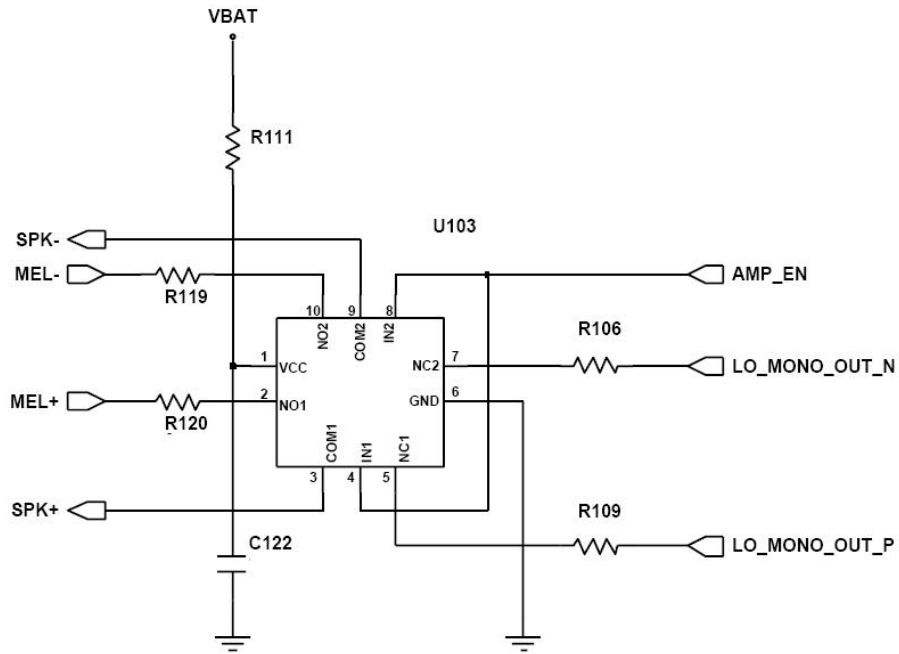




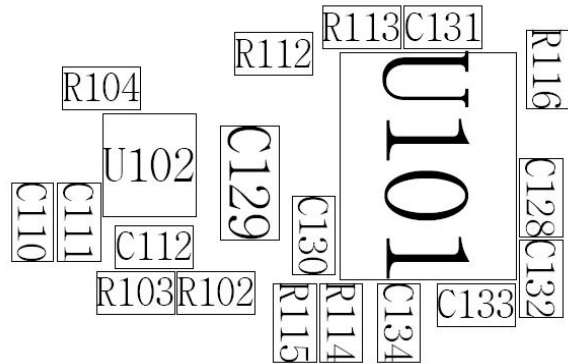
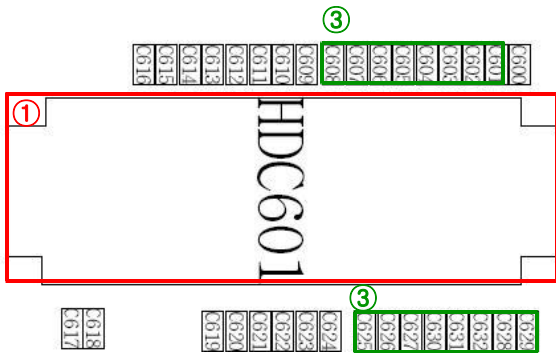
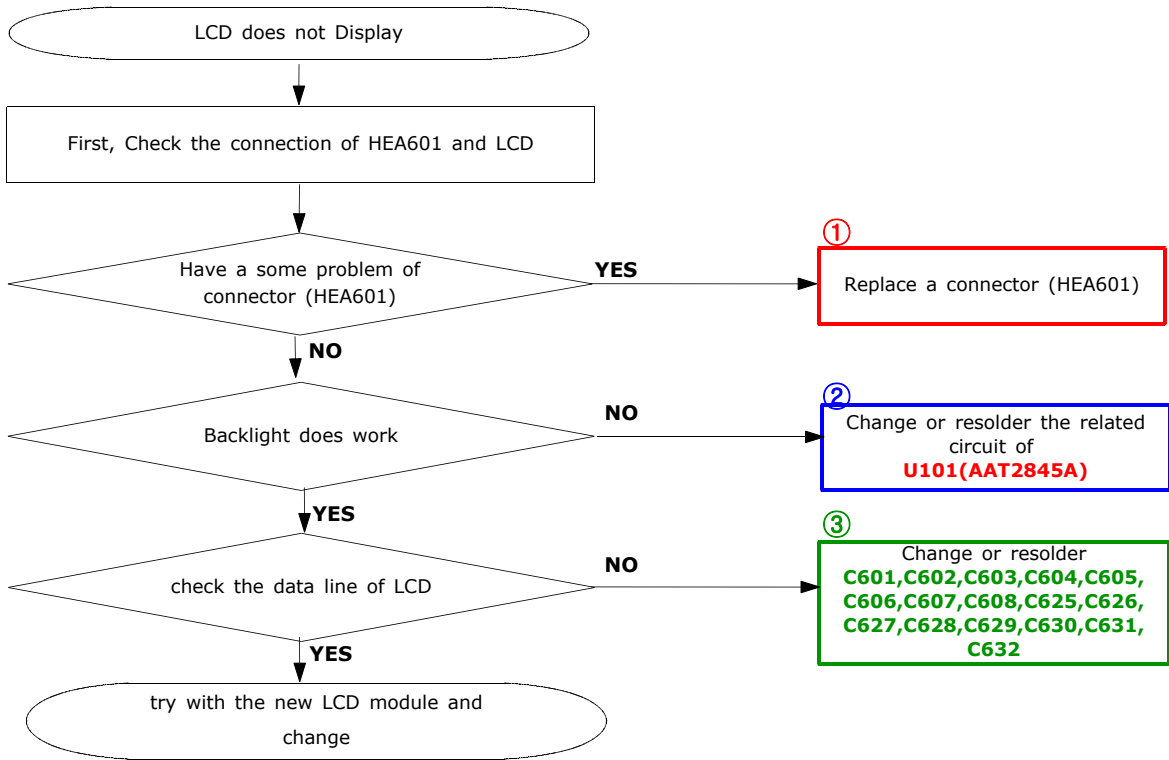
10-1-6. Speaker Part

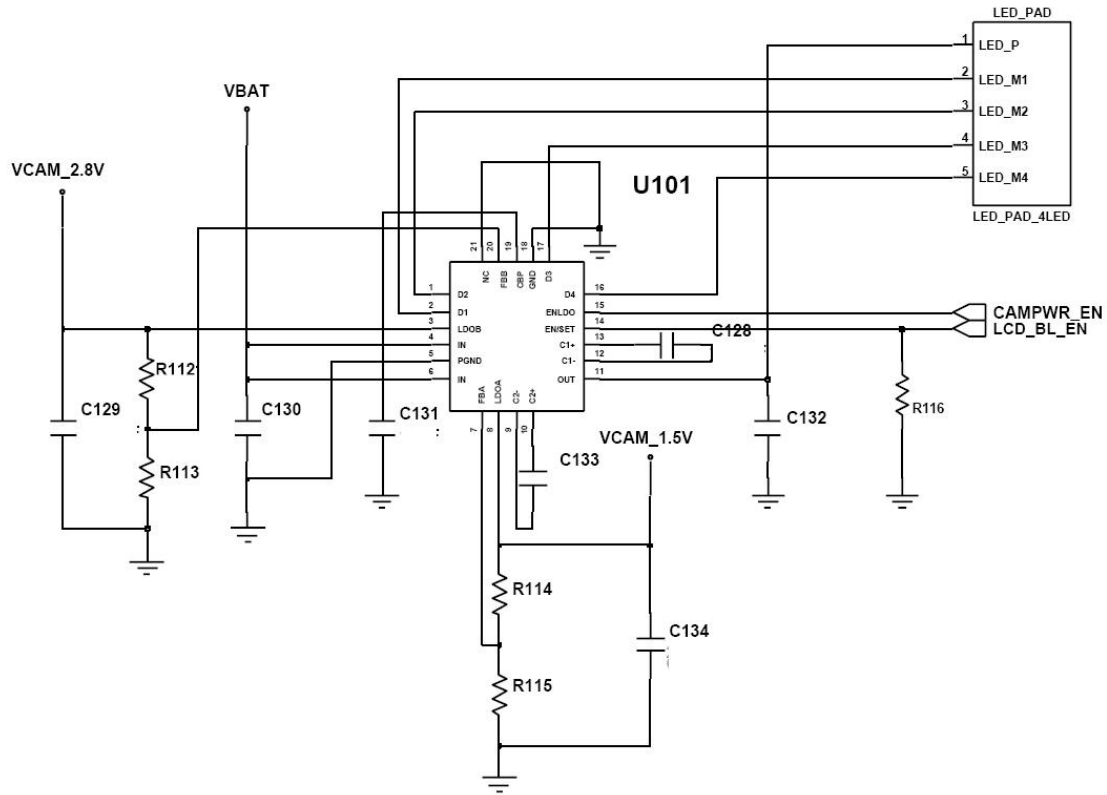




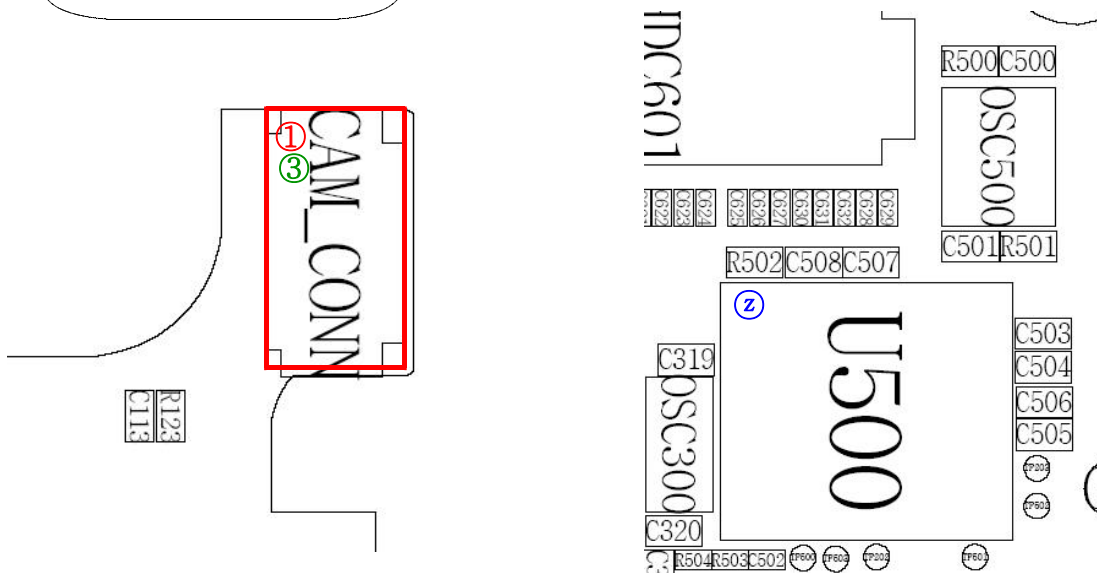
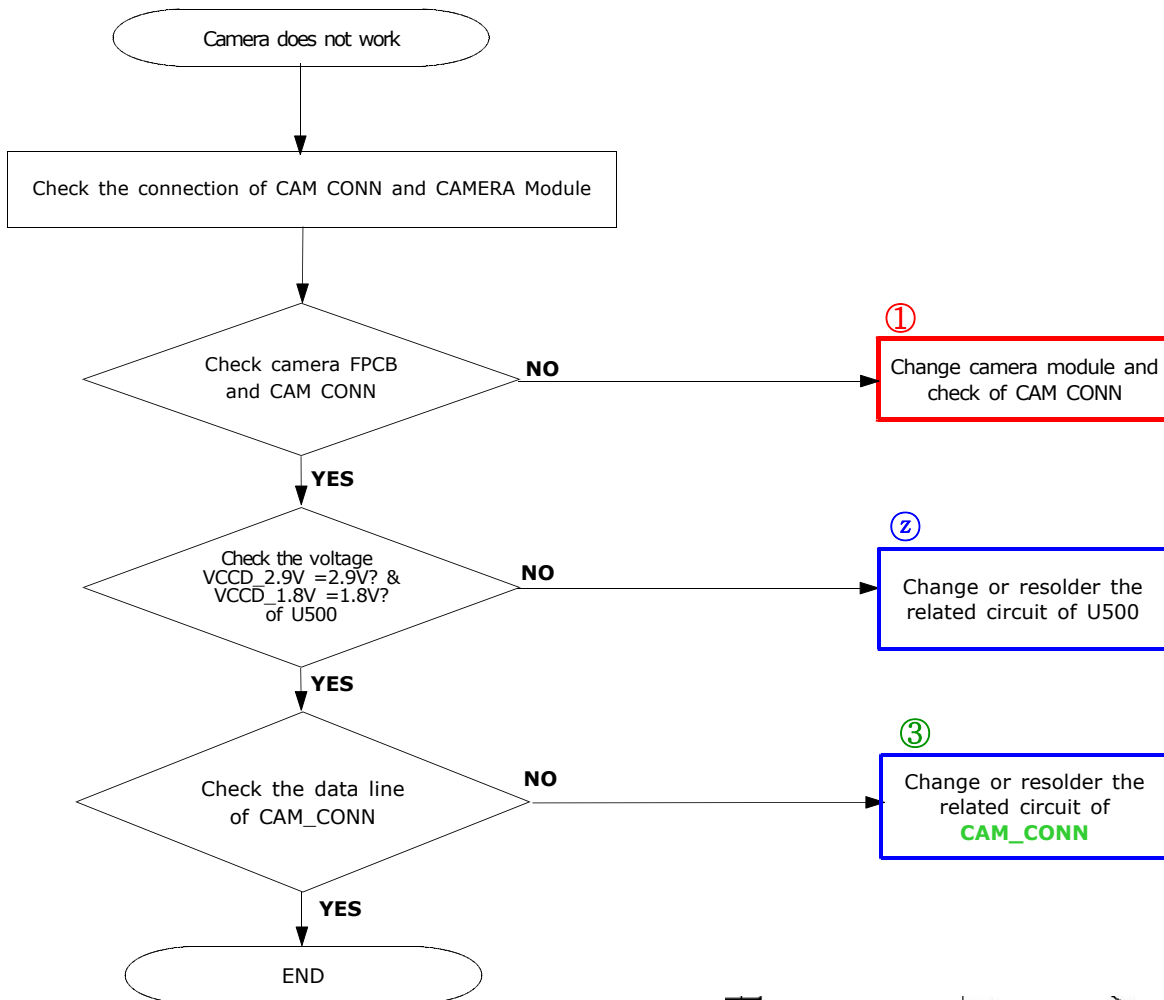


10-1-7. LCD



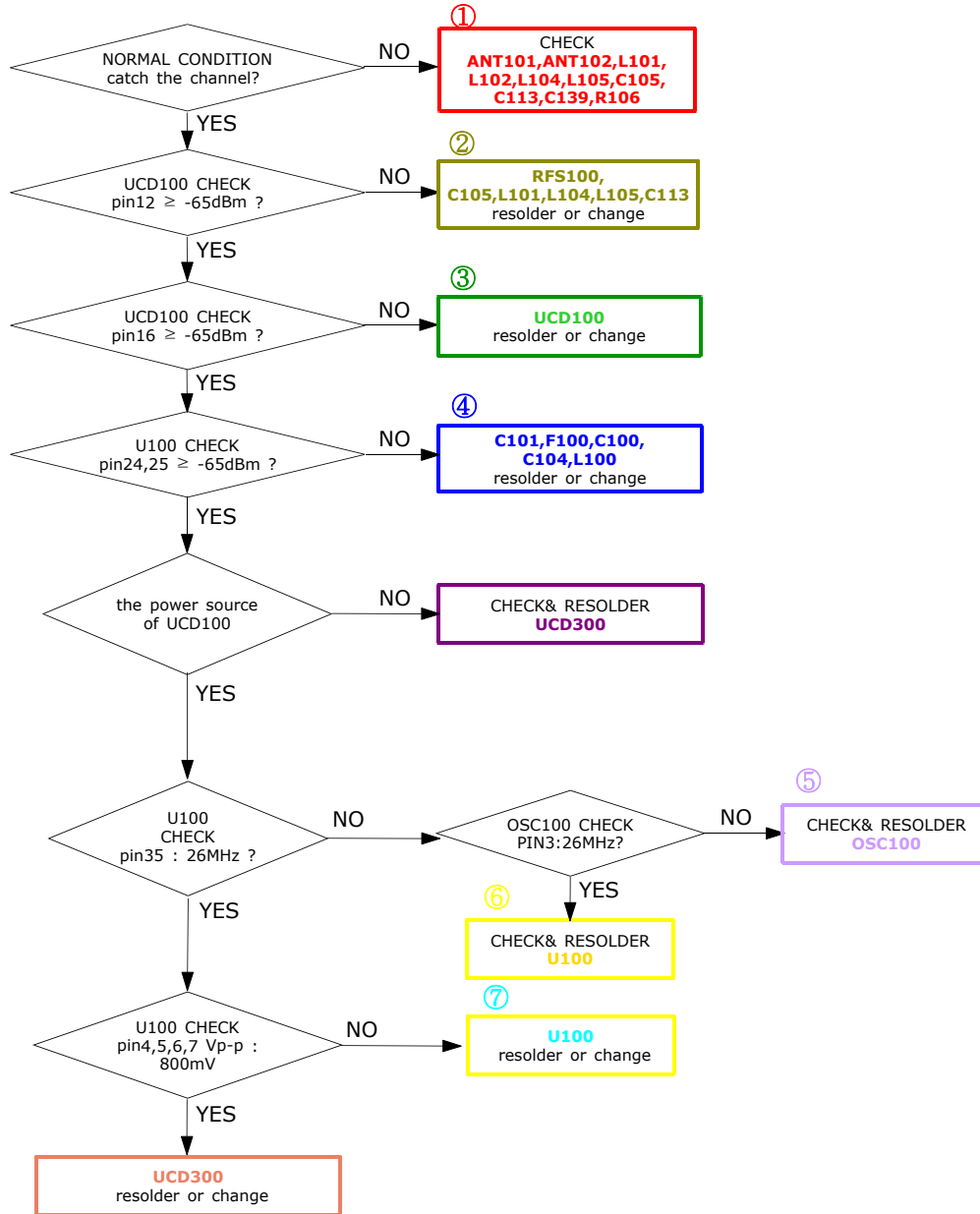


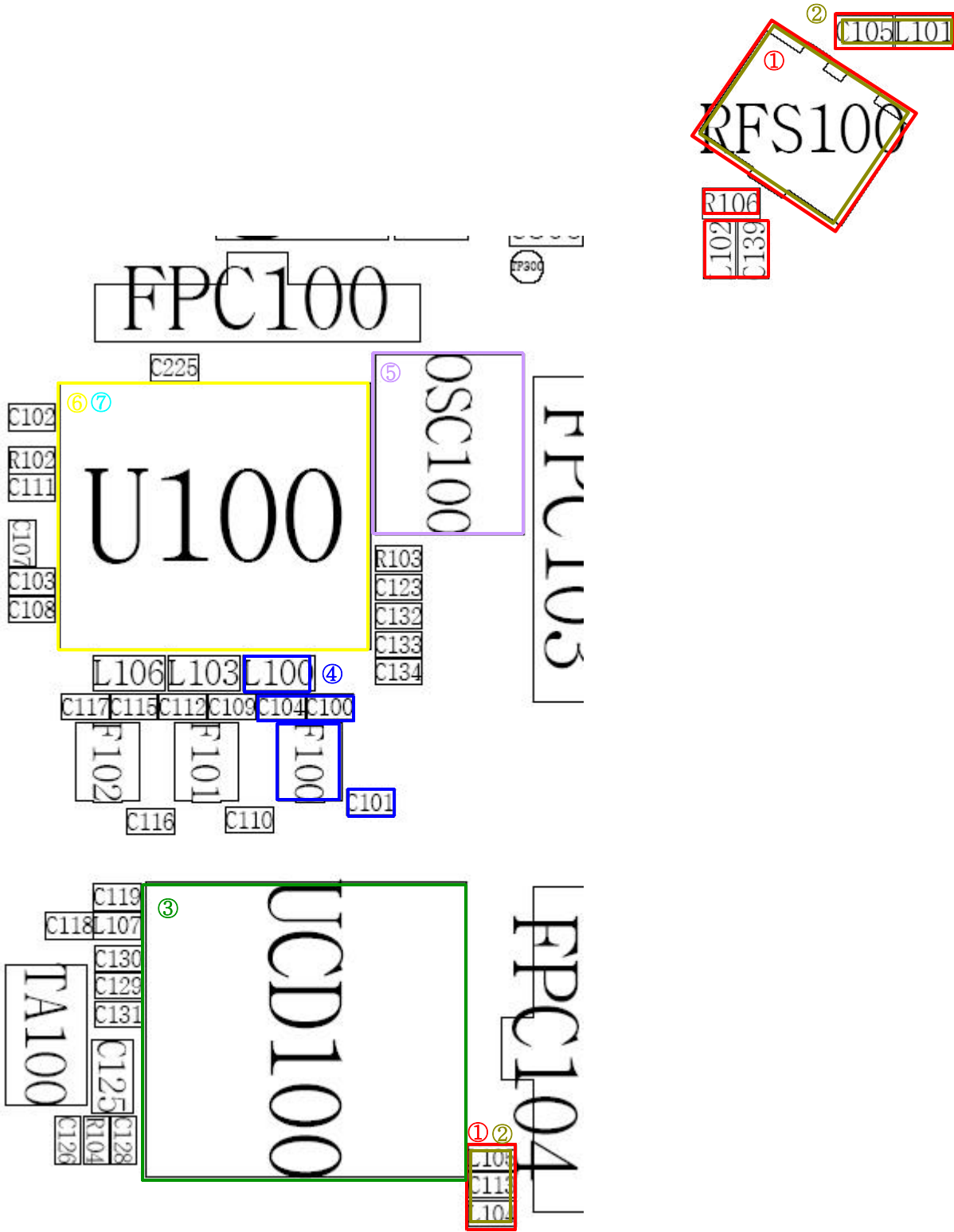
10-1-7. Camera

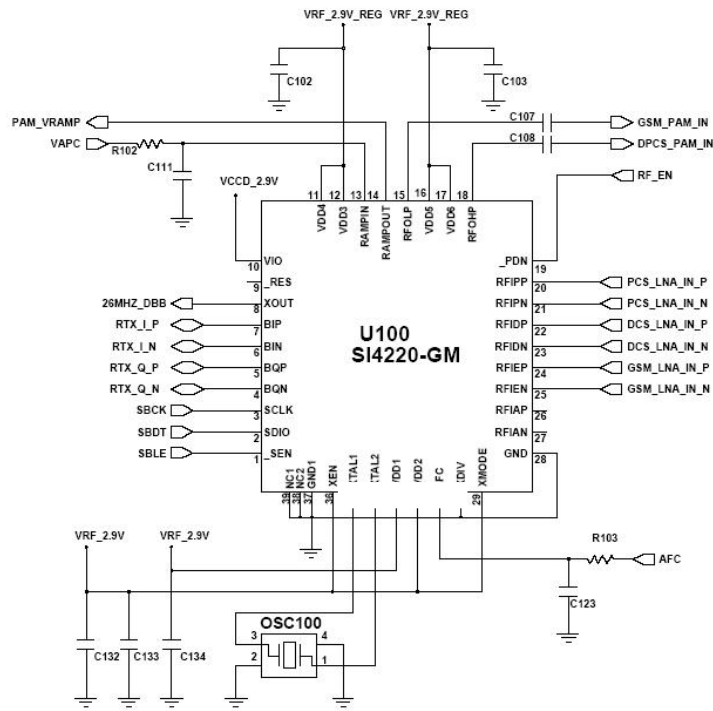


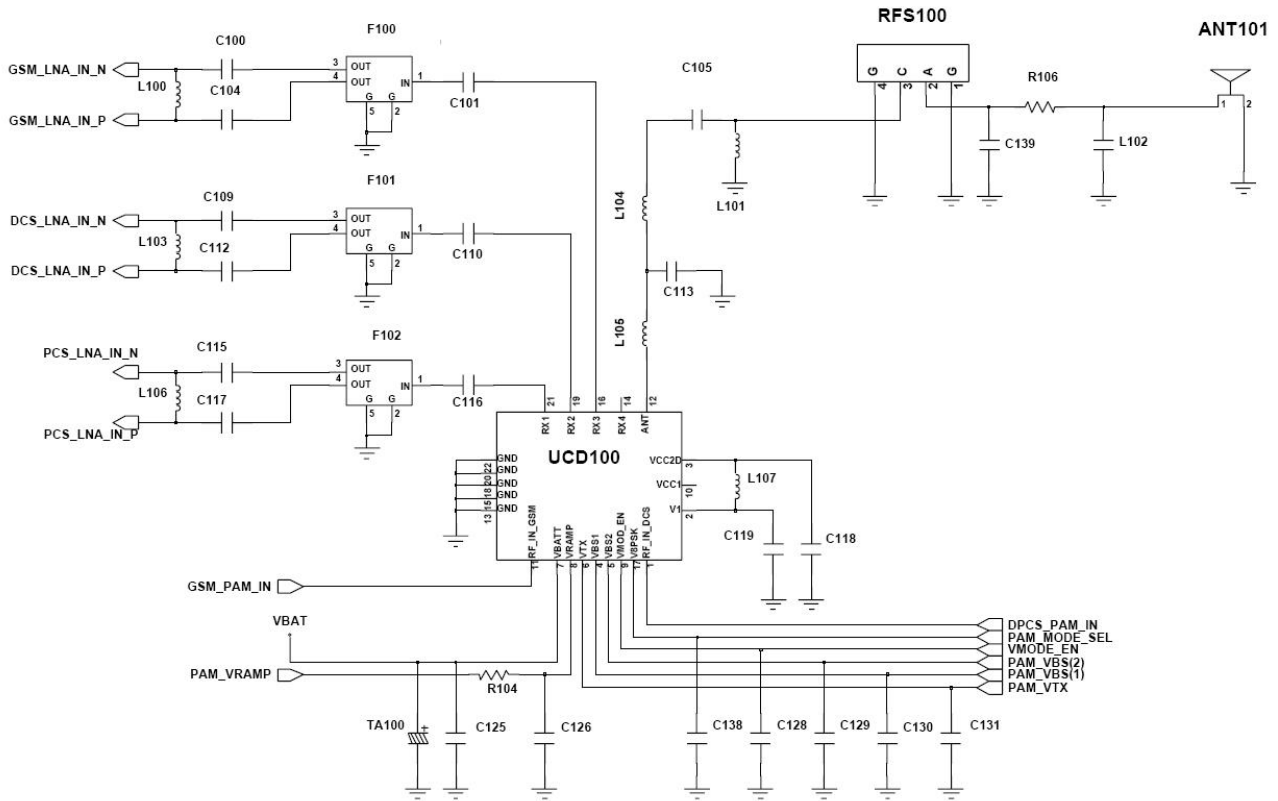
10-2.RF

10-2-1. EGSM RX

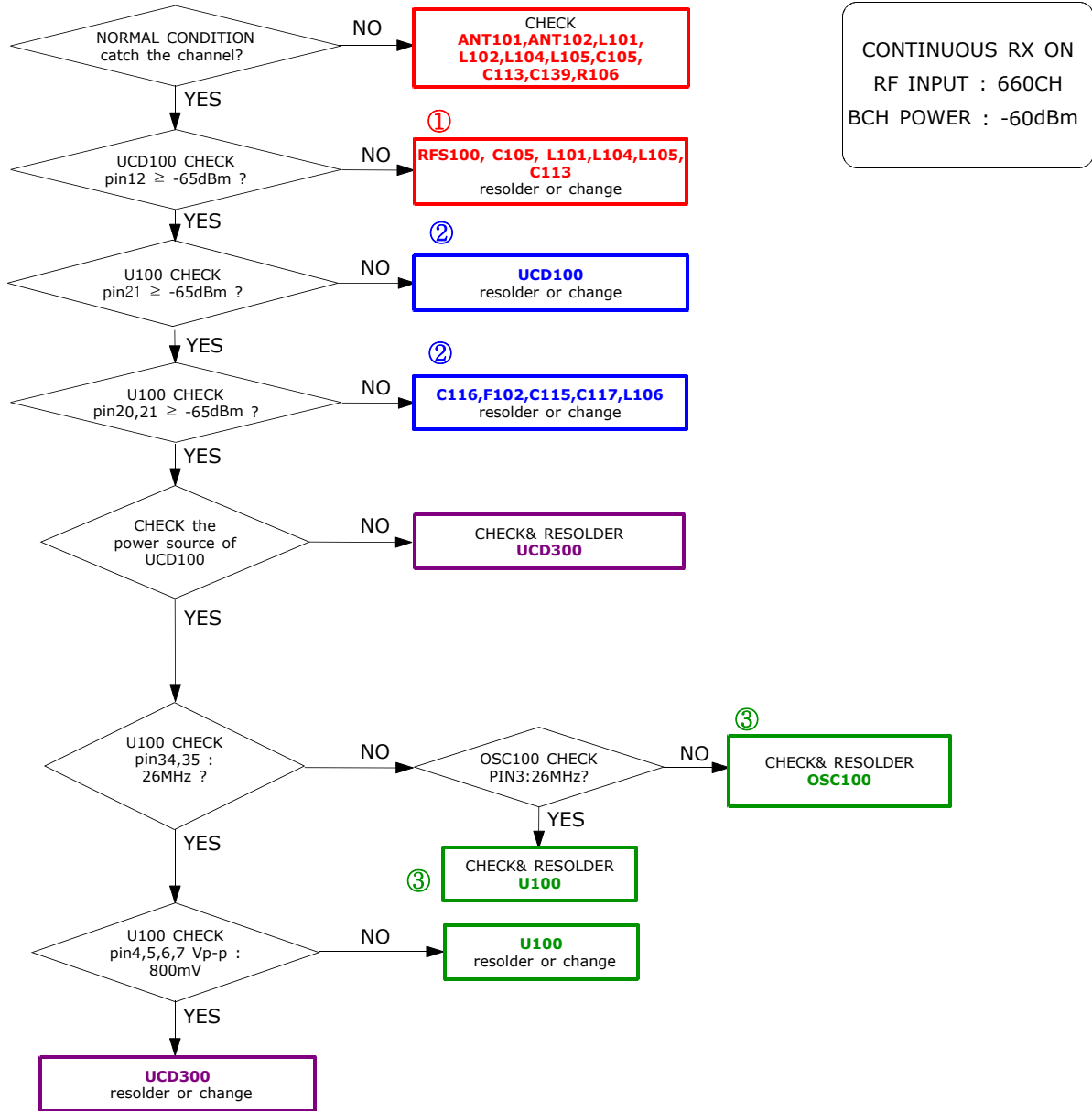




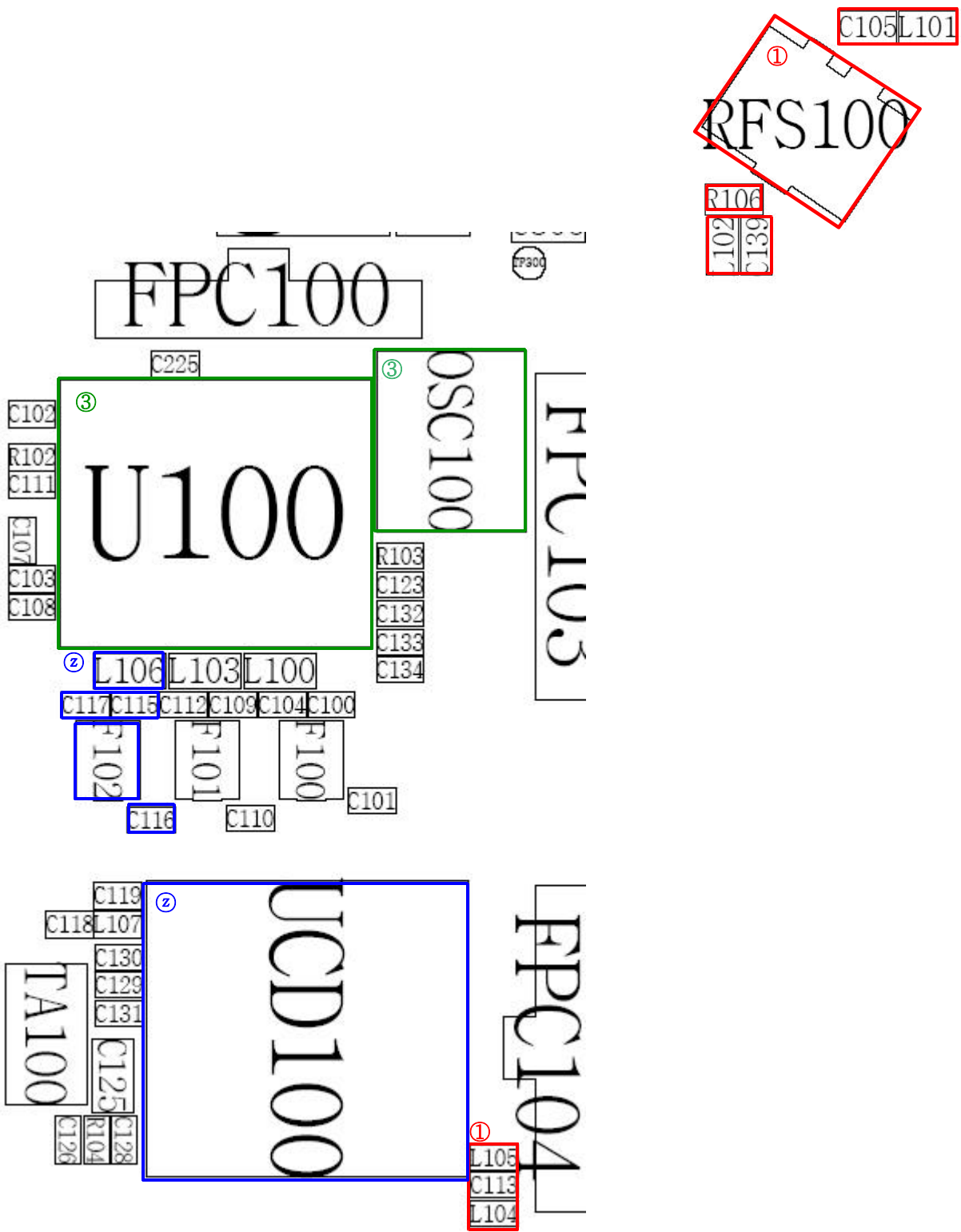




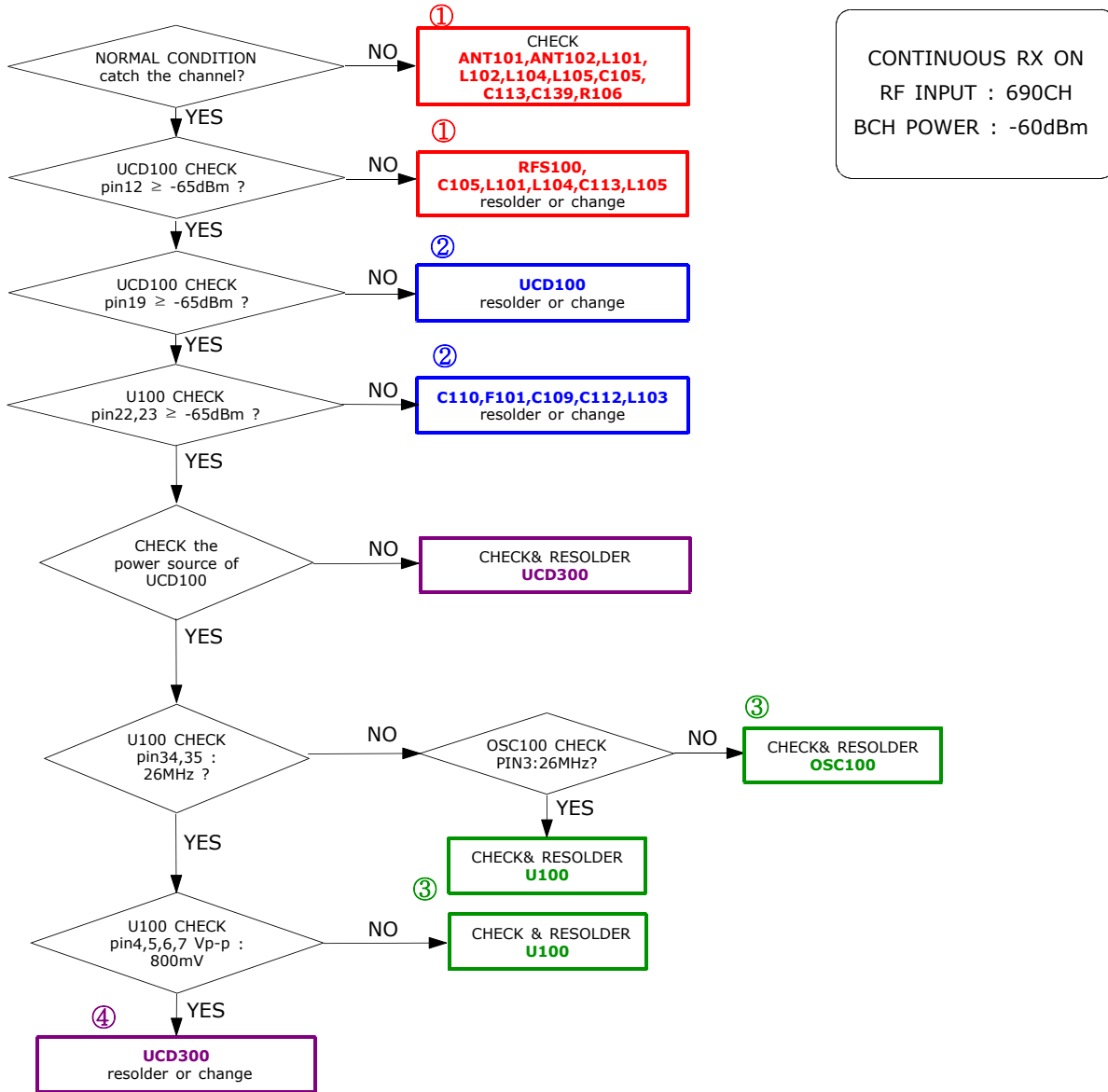
10-2-2. PCS RX

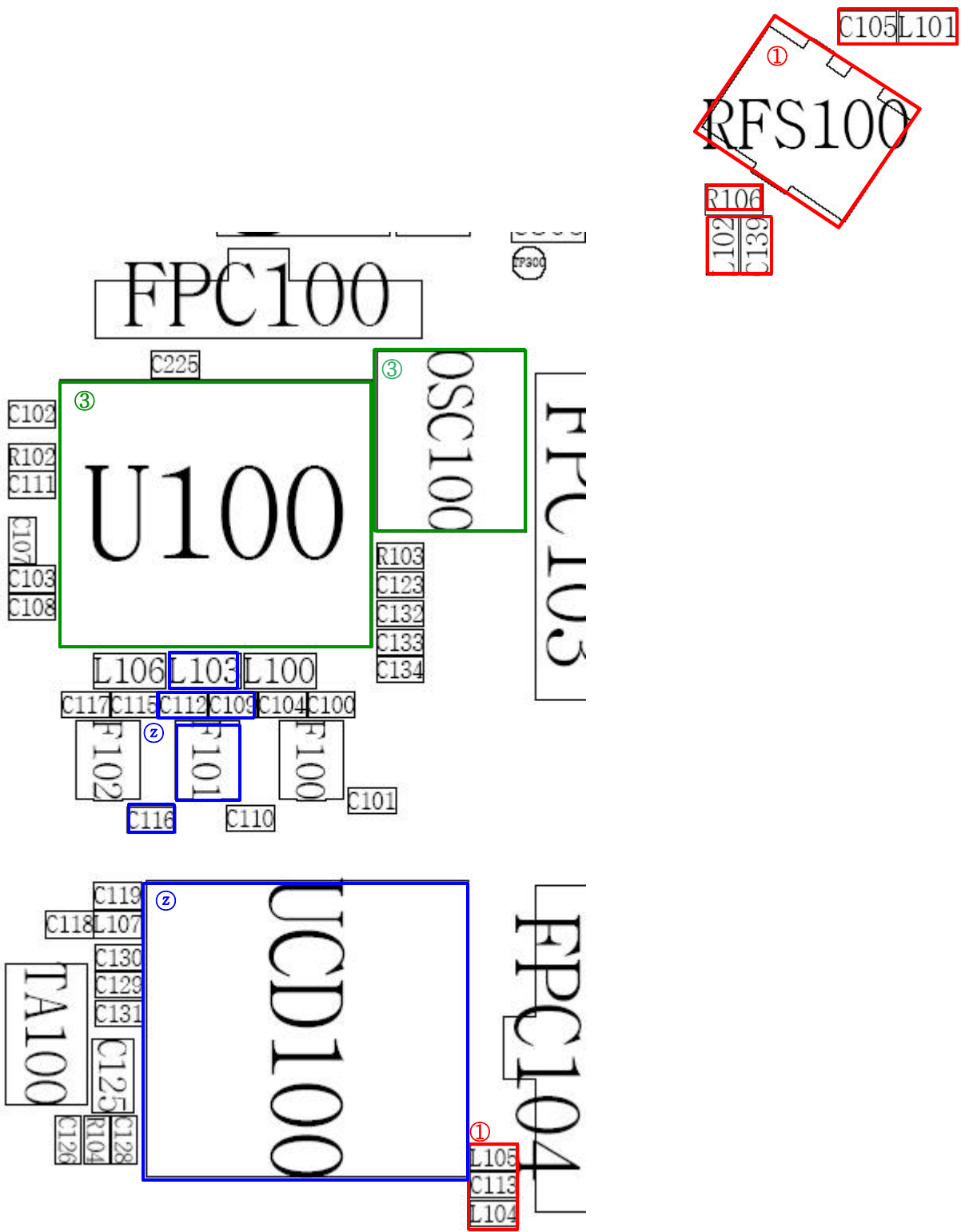


CONTINUOUS RX ON
RF INPUT : 660CH
BCH POWER : -60dBm

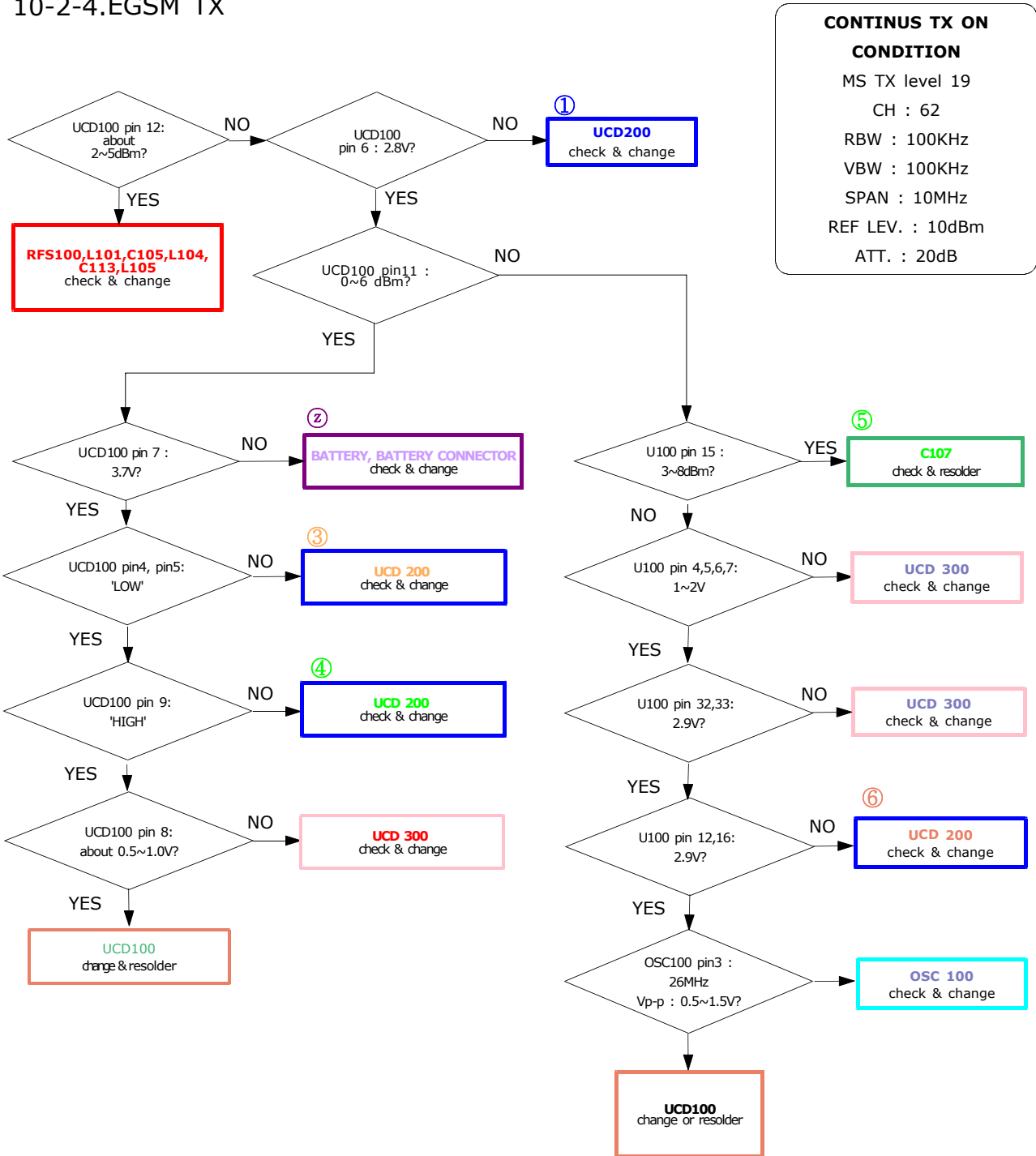


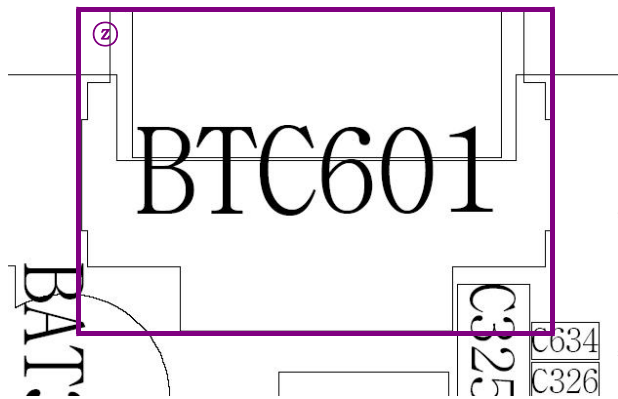
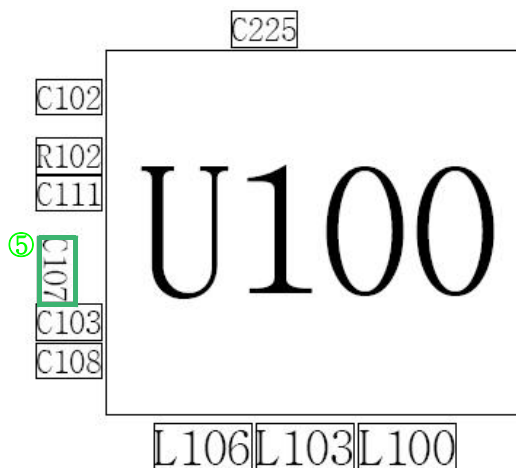
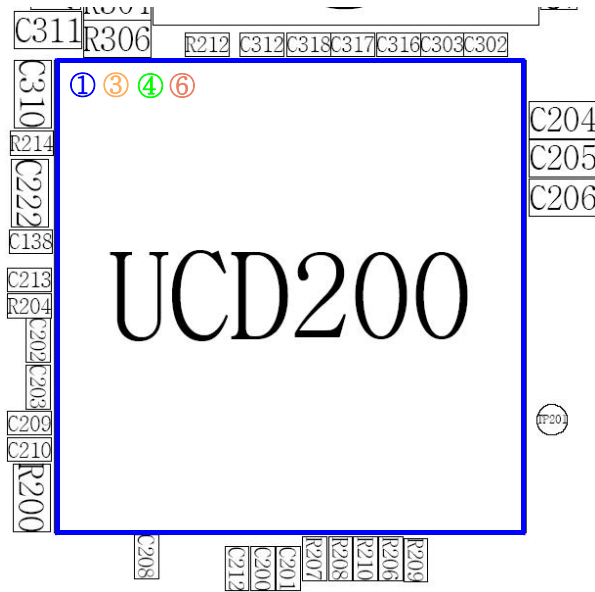
10-2-3. DCS RX





10-2-4.EGSM TX





10-2-5. DCS/PCS TX

