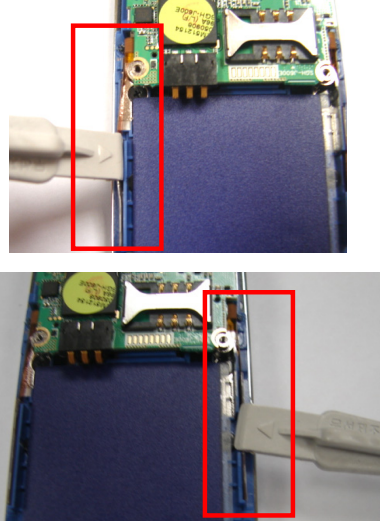
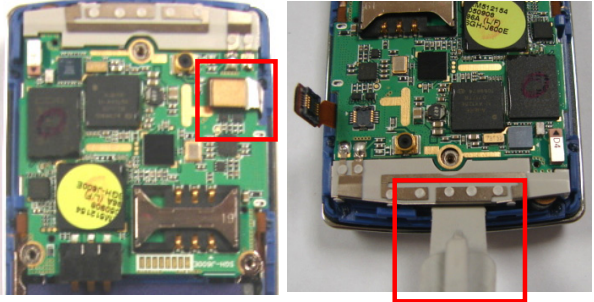
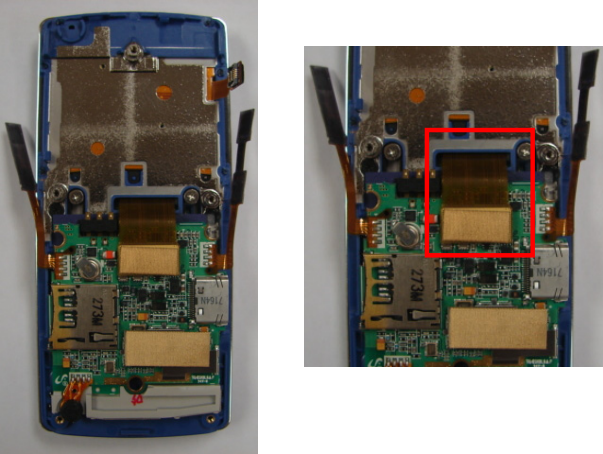
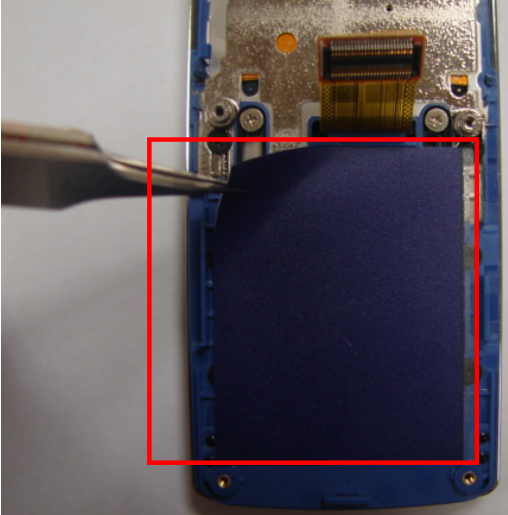
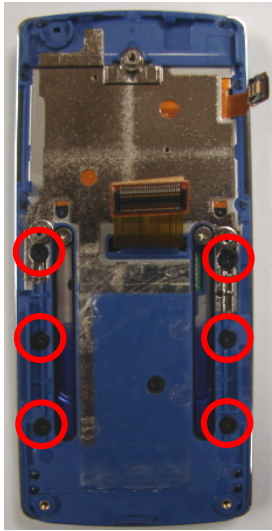
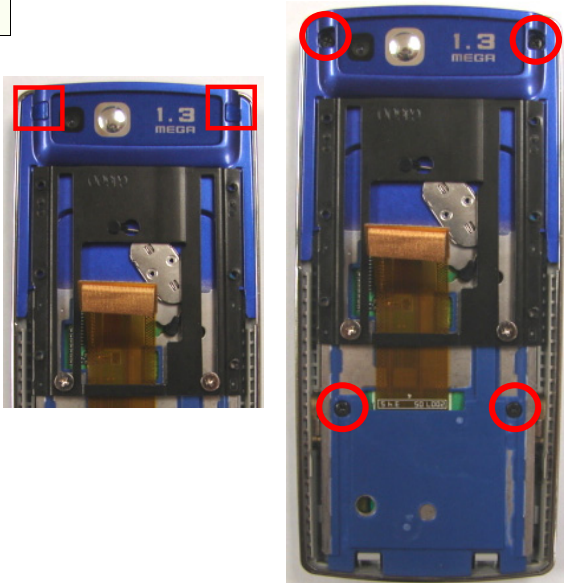
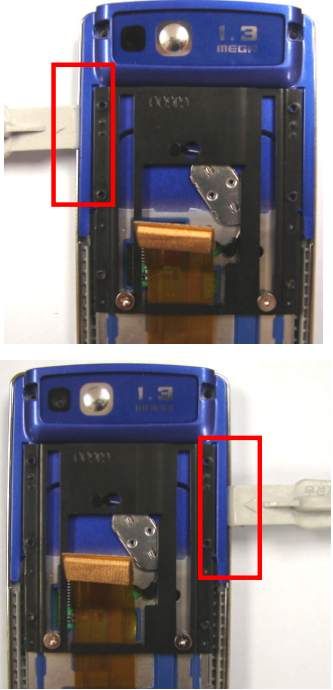
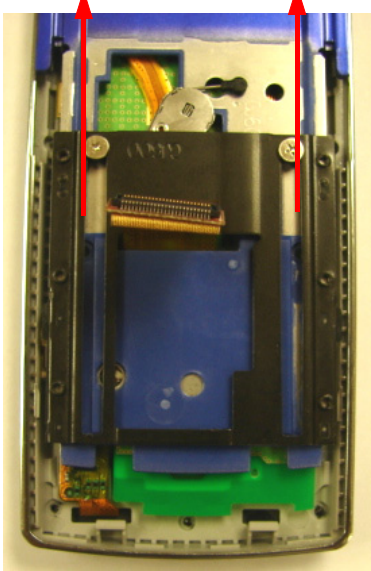


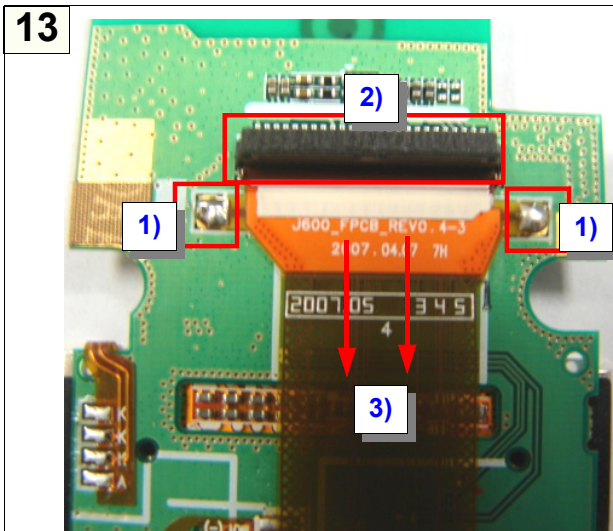
7. Disassembly and Assembly Instructions

7-1. Disassembly

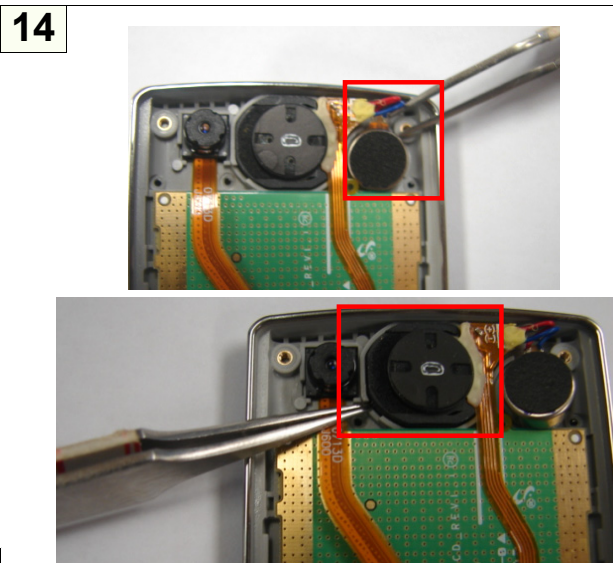
<p>1</p>  <p>DETACH REAR SCREW CAP</p>	<p>2</p>  <p>1) OPEN EARPHONE COVER 2) OPEN SD CARD COVER</p> <p>※ caution</p> <p>1.DO NOT MAKE SCRATCH ON CASE</p>
<p>1) DETACH REAR SCREW CAP</p> <p>※ caution</p> <p>1.DO NOT MAKE SCRATCH ON CASE</p>	<p>1) OPEN EARPHONE COVER 2) OPEN SD CARD COVER</p> <p>※ caution</p> <p>1.DO NOT MAKE SCRATCH ON CASE</p>
<p>3</p> 	<p>4</p>  <p>1) DISASSEMBLE REAR LOCKING PART USING TOOLS 2) PULL THE REAR</p> <p>※ caution</p> <p>1.DO NOT MAKE SCRATCH ON CASE</p>
<p>1) RELEASE SCREW AT 5POINTS</p> <p>※ caution</p> <p>1. DO NOT MAKE SCRATCH ON CASE</p>	<p>1) DISASSEMBLE REAR LOCKING PART USING TOOLS 2) PULL THE REAR</p> <p>※ caution</p> <p>1.DO NOT MAKE SCRATCH ON CASE</p>

<p>5</p> 	<p>6</p> 
<p>1) DISASSEMBLE VOLUME KEY FPCB BY TOOLS 2) DISASSEMBLE CAMERA KEY FPCB BY TOOLS ※ caution 1. WHEN DISASSEMBLE, TAKE CARE DAMAGE AT PARTS.</p>	<p>1) DISASSEMBLE KEY PCB AT CONNECTOR 2) DISASSEMBLE PBA LOCKING PART USING TOOLS ※ caution 1. WHEN DISASSEMBLE, TAKE CARE DAMAGE AT PARTS.</p>
<p>7</p> 	<p>8</p> 
<p>1) TURN PBA OVER 2) DISASSEMBLE SLIDE FPCB AT CONNECTOR ※ caution 1. WHEN DISASSEMBLE SLIDE FPCB, TAKE CARE BREAKING SLIDE FPCB.</p>	<p>1) DETACH TAPE BY TOOLS</p>

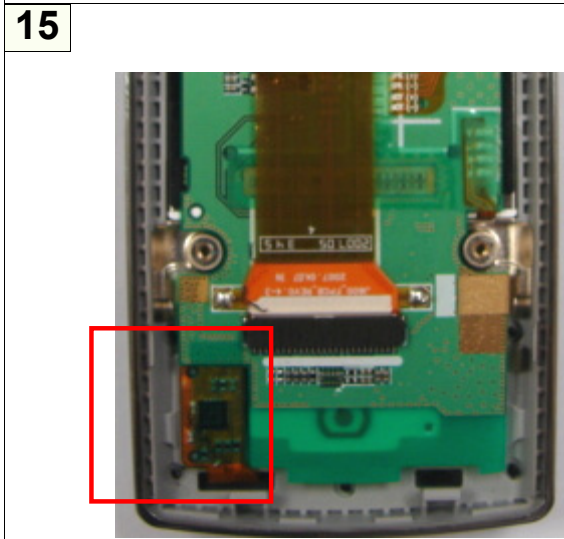
<p>9</p> 	<p>10</p> 
<p>1) RELEASE SCREW AT 6 POINTS 2) DISASSEMBLE FRONT ※ caution 1. WHEN DISASSEMBLE FRONT, TAKE CARE BREAKING SLIDE FPCB.</p>	<p>1) DISASSEMBLE SCREW CAP AT 2 POINTS 2) RELEASE SCREW AT 4 POINTS ※ caution 1. DO NOT MAKE SCRATCH ON CASE</p>
<p>11</p> 	<p>12</p> 
<p>1) DISASSEMBLE SLIDE LOWER LOCKING PART USING TOOS ※ caution 1. DO NOT MAKE SCRATCH ON CASE</p>	<p>1) PUSH DOWN HINGE CASE 2) PUSH REAR ARROW DIRECTION, CAN DISASSEMBLE ※ caution 1. WHEN DISASSEMBLE SLIDE LOWER, TAKE CARE BREAKING SLIDE FPCB.</p>



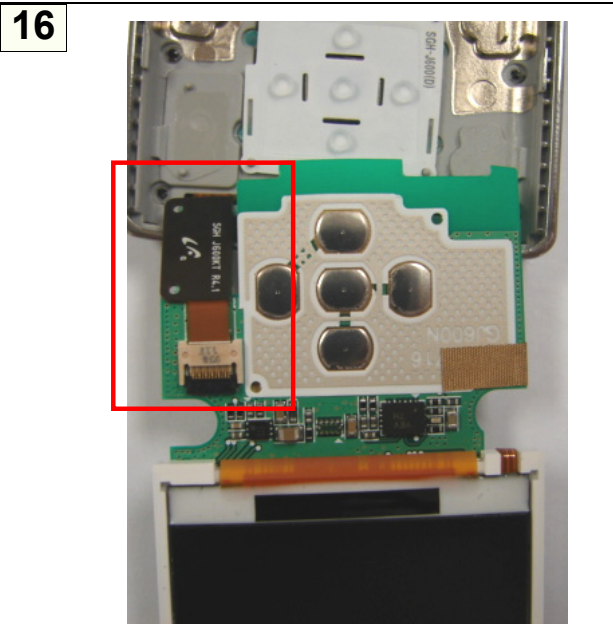
- 1) REMOVE SOLDERING LEAD ON FPCB
 - 2) OPEN FPCB CONNECTOR
 - 3) PULL FPCB
- ※ **caution**
1. WHEN DISASSEMBLE SLIDE FPCB, TAKE CARE BREAKING SLIDE FPCB AND CONNECTOR



- 1) DISASSEMBLE MOTOR BY TOOLS
 - 2) DISASSEMBLE SPK BY TOOLS
- ※ **caution**
1. WHEN DISASSEMBLE MOTOR AND SPK, TAKE CARE BREAKING SPK FPCB, MOTOR AND SPK MESH.

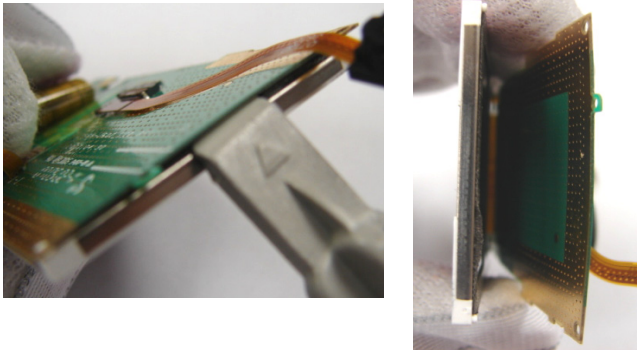


- 1) DETACH TOUCH KEY IC BY TOOLS
 - 2) TURN PBA OVER
- ※ **caution**
1. WHEN DISASSEMBLE, TAKE CARE DAMAGE ON TOUCH KEY IC.



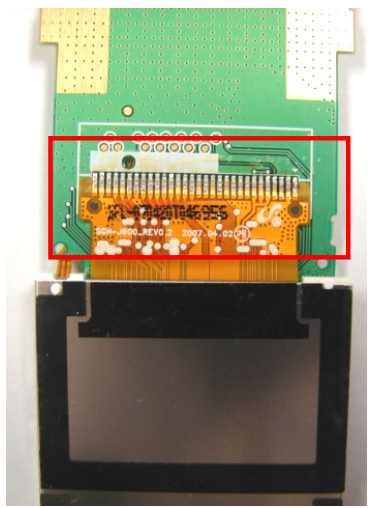
- 1) OPEN THE CONNECTOR
 - 2) PULL TOUCH KEY FPCB
- ※ **caution**
1. WHEN DISASSEMBLE TOUCH KEY FPCB, TAKE CARE BREAKING TOUCH KEY FPCB
 2. DOUBLE-STICK TAPED UNDER TOUCH KEY FPCB.

17



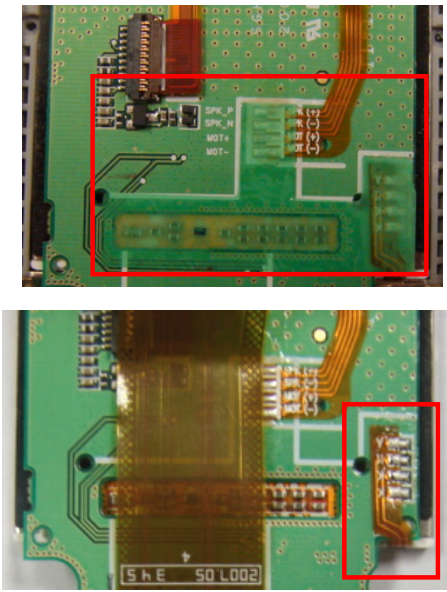
1) DETACH LCD BY TOOLS
 ※ **caution**
 1. WHEN DISASSEMBLE LCD, TAKE CARE BREAKING LCD AND PBA

18



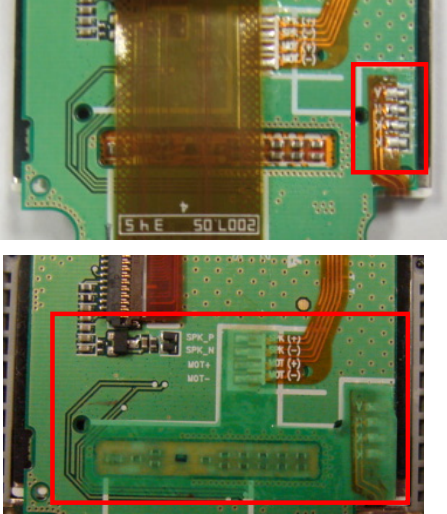
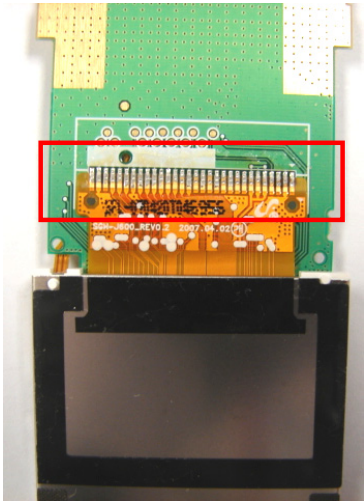
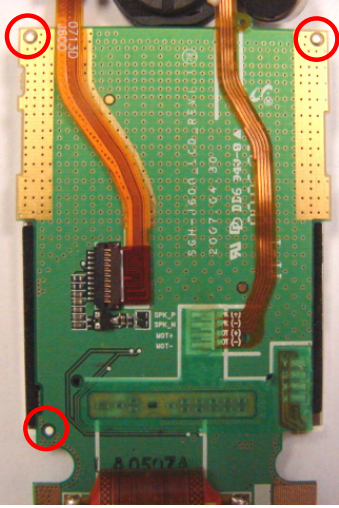
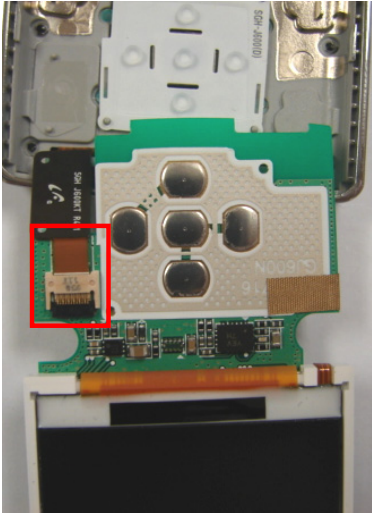
1) REMOVE SOLDERING LEAD ON PBA
 ※ **caution**
 1. WHEN REMOVE SOLDERING LCD, TAKE CARE BREAKING LCD FPCB.

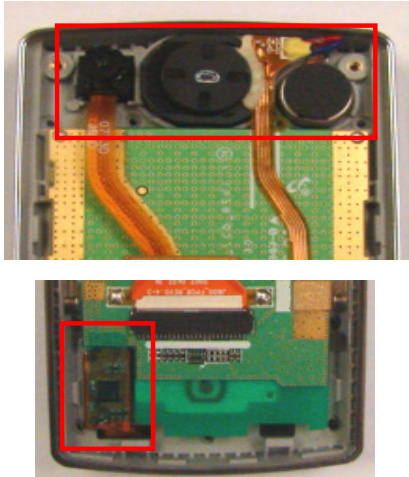
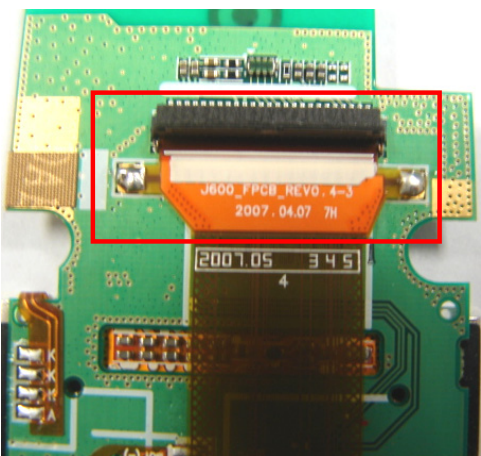
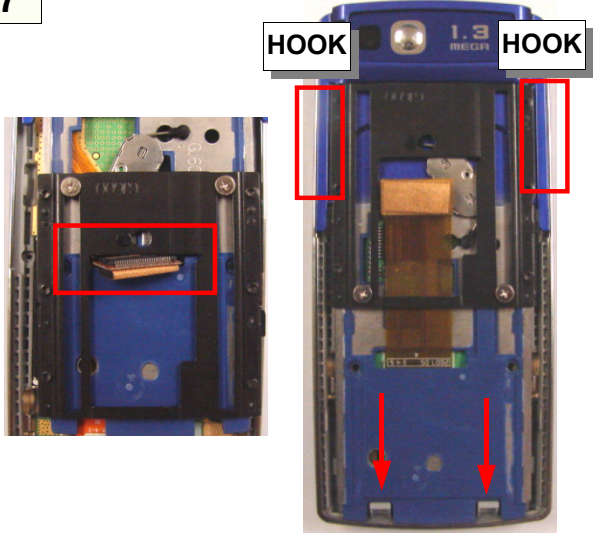
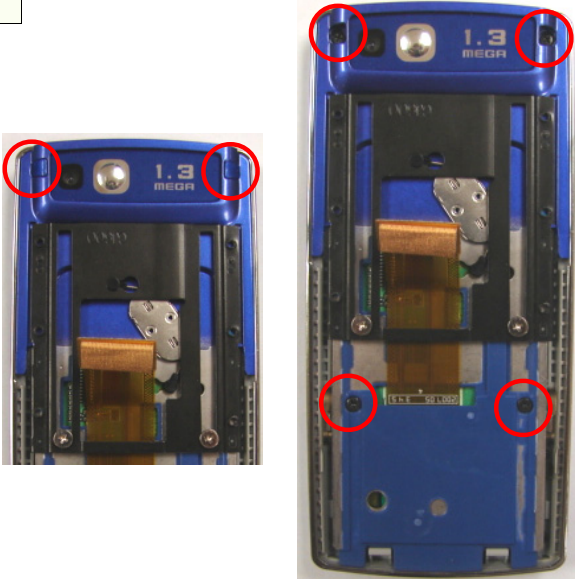
19

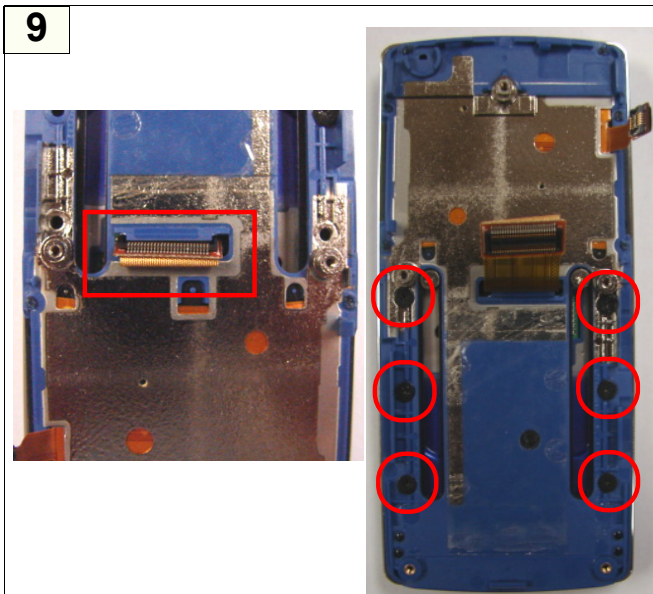


1) DETACH TAPE
 2) REMOVE SOLDERING LEAD ON PBA
 ※ **caution**
 1. WHEN REMOVE SOLDERING LCD, TAKE CARE BREAKING LCD FPCB.

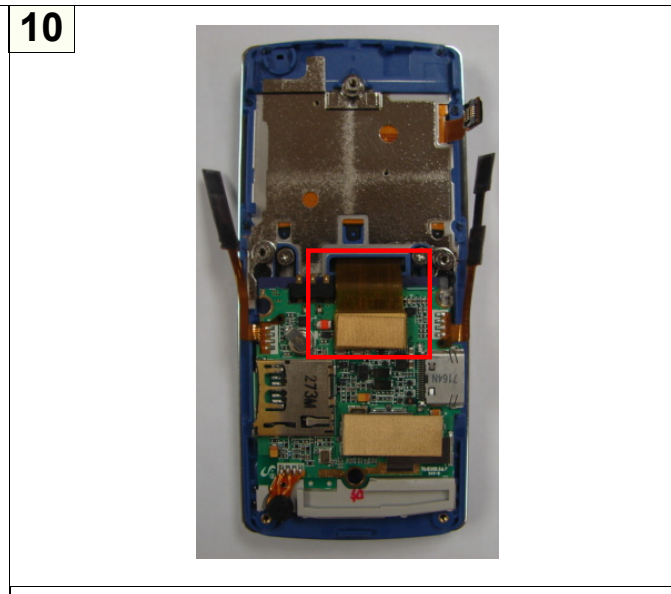
7-2. Assembly

<p>1</p> 	<p>2</p> 
<p>1) Solder LCD FPCB 2) Attach tape on SUB PBA</p> <p>※ caution</p> <p>1. After solder, Check short-circuit soldering point and take care breaking LCD FPCB.</p>	<p>1) Solder LCD FPCB</p> <p>※ caution</p> <p>1. After solder, Check short-circuit soldering point and take care breaking LCD FPCB.</p>
<p>3</p> 	<p>4</p> 
<p>1) Attach LCD at SUB PBA</p> <p>※ caution</p> <p>1. Check LCD-Assembly-Guide Holes (pointed by red circles in the picture)</p>	<p>1) Insert TOUCH KEY FPCB to CONNECTOR. 2) Close the CONNECTOR.</p> <p>※ caution</p> <p>1. Make sure that FPCB is completely inserted. 2. When assembly, take care breaking FPCB.</p>

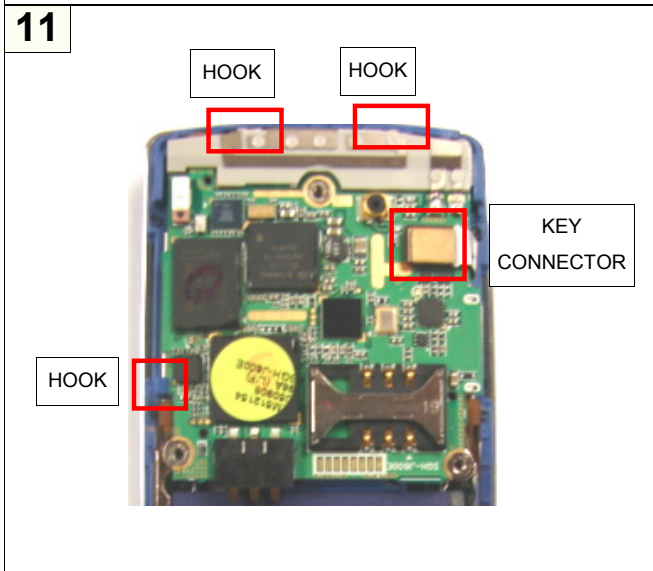
<p>5</p> 	<p>6</p> 
<p>1) Turn SUB PBA over. 2) Attach CAMERA, SPK and MOTOR. 3) Attach tape at TOUCH KEY IC. ※ caution 1. Leave no particle and no finger print between LCD and WINDOW.</p>	<p>1) Insert SLIDE FPCB to CONNECTOR. 2) Close the CONNECTOR. 3) Solder 2 points beside of FPCB. ※ caution 1. Make sure that FPCB is completely inserted. 2. Don't make the solder disturb other parts.</p>
<p>7</p> 	<p>8</p> 
<p>1) Insert SLIDE FPCB at SLIDE LOWER hole 2) Assemble the SLIDE LOWRE by push from top to bottom 3) Press 2 point of HOOK on the SLIDE LOWER ※ caution 1. Do not make SCRATCH on the surface.</p>	<p>1) Drive SCREWS at 4 POINT. 2) Press left and right SCREW CAPs. ※ caution 1. Do not make SCRATCH on the surface.</p>



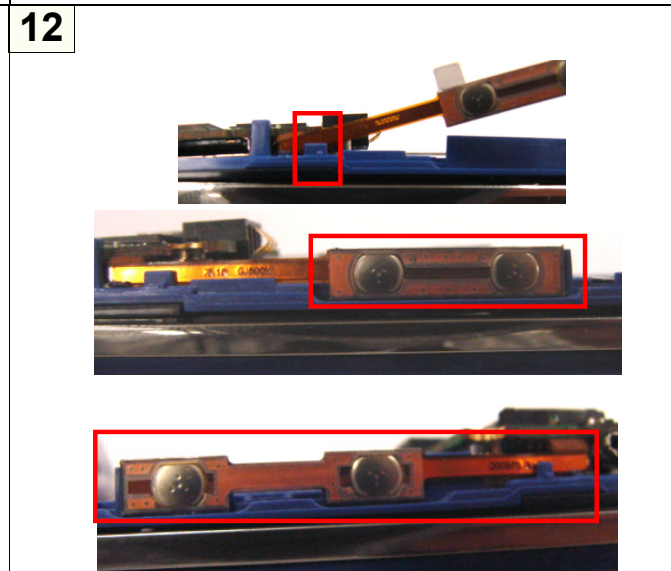
- 1) Insert SLIDE FPCB at FRONT hole.
 - 2) Drive SCREWS at 6 POINT.
- ※ **caution**
1. Do not make SCRATCH on the surface.



- 1) Press SLIDE FPCB to the CONNECTOR at PBA
- ※ **caution**
1. Make sure that FPCB is completely inserted.



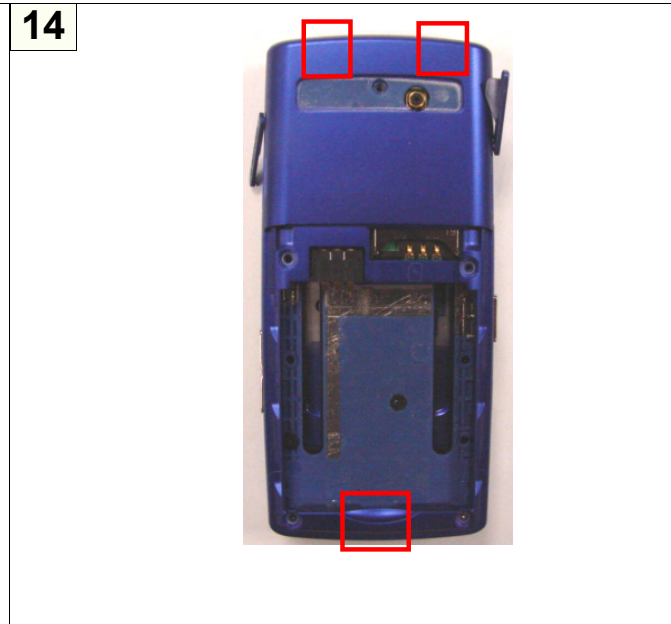
- 1) Turn PBA over
 - 2) Press 3 point of HOOK on PBA
 - 3) Press KEY FPCB to the CONNECTOR at PBA
- ※ **caution**
1. Make sure that FPCB is completely inserted.
 1. Be careful of DAMAGE on PBA and HOOK.



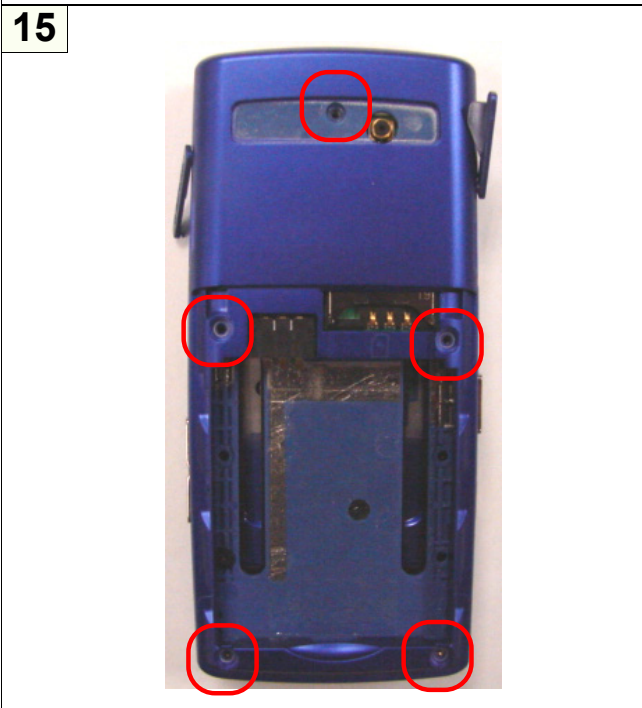
- 1) VOLUME KEY FPCB pass over the rib
 - 2) Attach VOLUME KEY FPCB
 - 3) CAMERA KEY FPCB pass over the rib
 - 4) Attach CAMERA KEY FPCB
- ※ **caution**
1. Be careful of DAMAGE on FPCB.



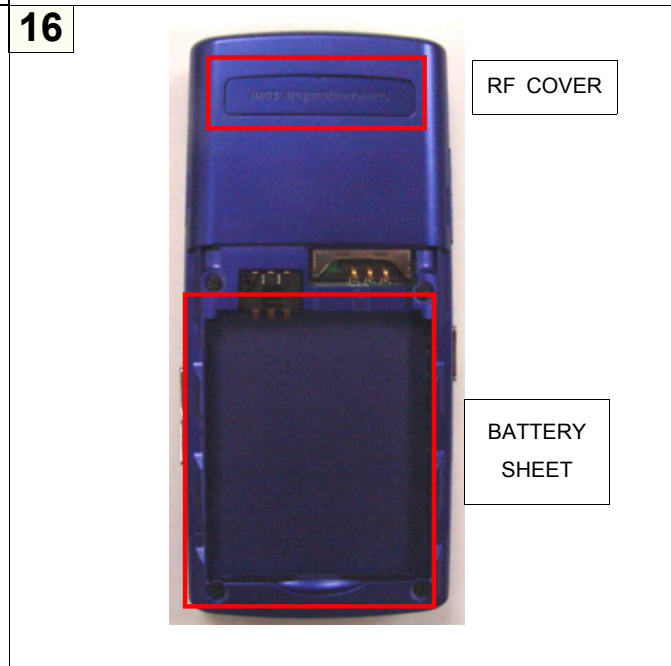
1) Open EAR COVER and SD CARD COVER at REAR



1) Press 3 point of HOOK on REAR
 ※ caution
 1. Be careful of DAMAGE on VOLUME KEY FPCB. and CAMERA KEY FPCB



1) Drive SCREWS at 5 POINT.
 ※ caution
 1. Do not make SCRATCH on the surface.



1) Attach RF COVER.
 2) Attach BATTERY SHEET.
 ※ caution
 1. Do not make SCRATCH on the surface.