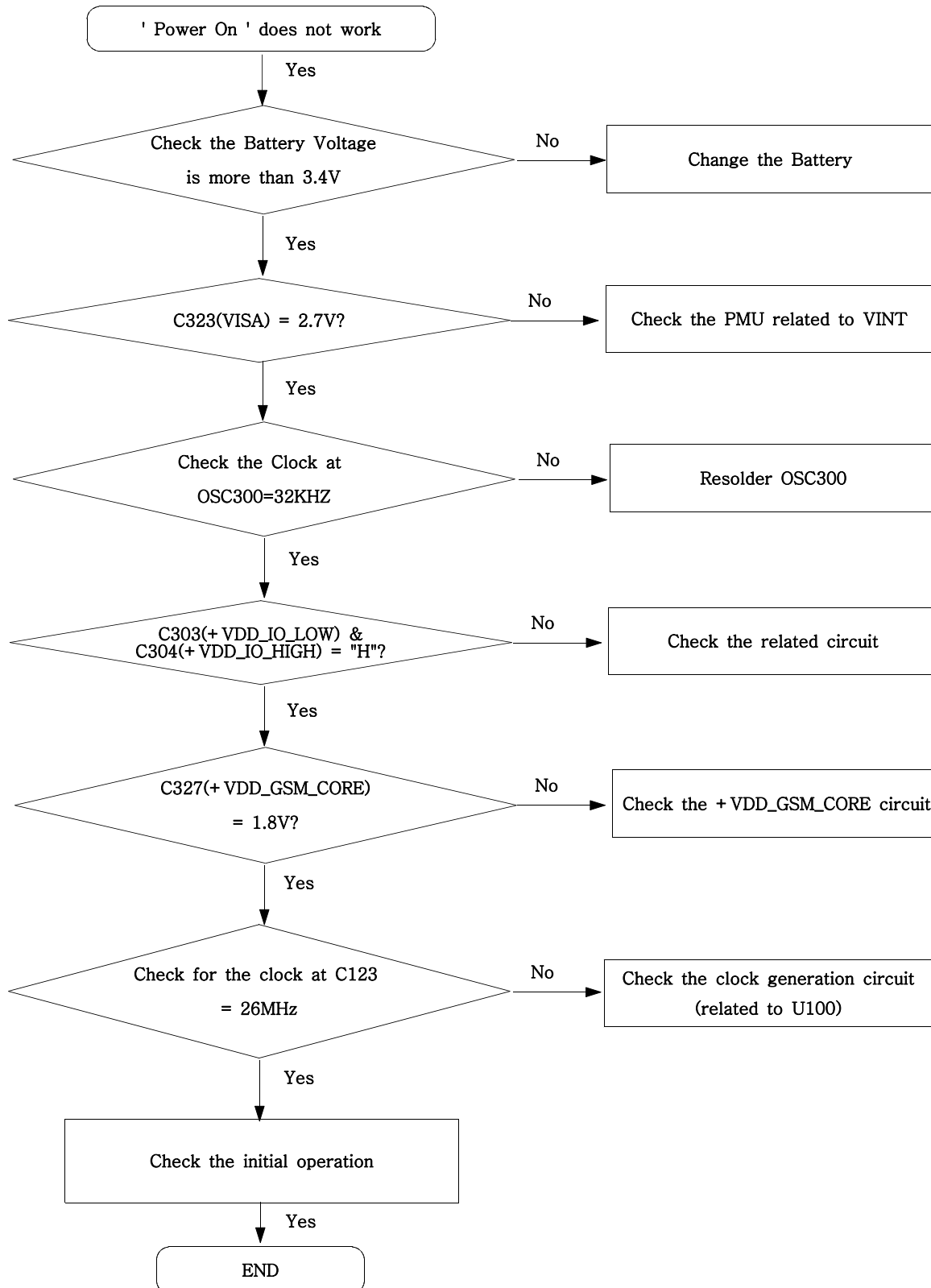
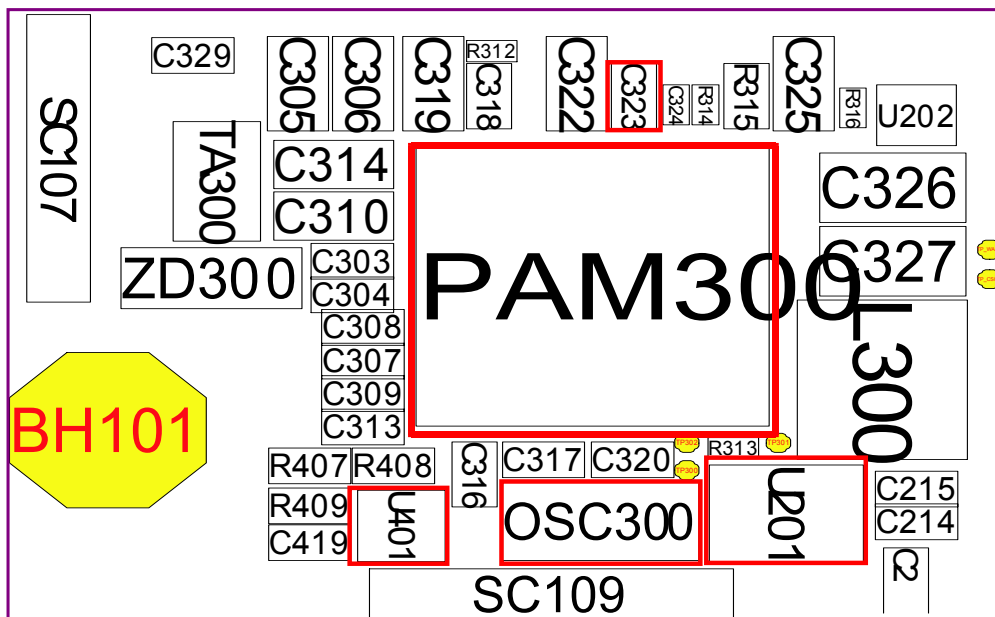
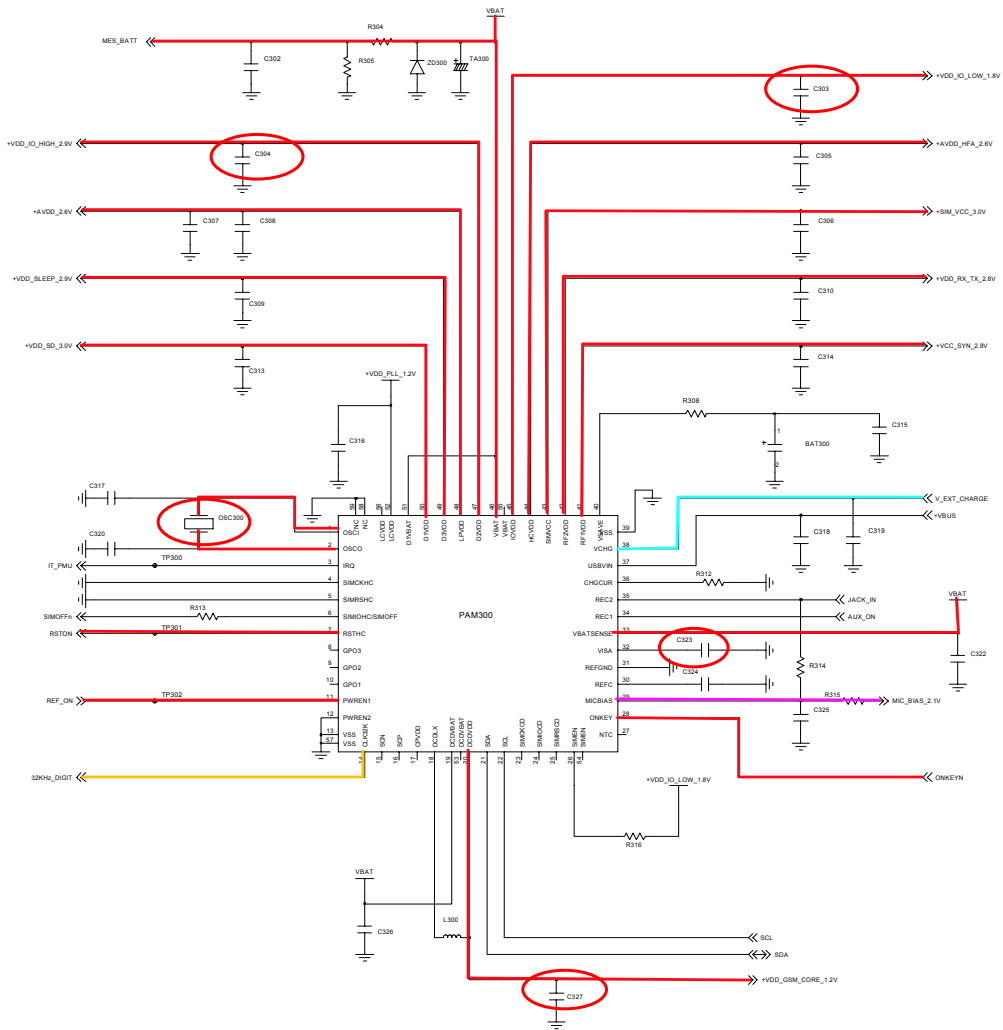


9. Flow Chart of Troubleshooting

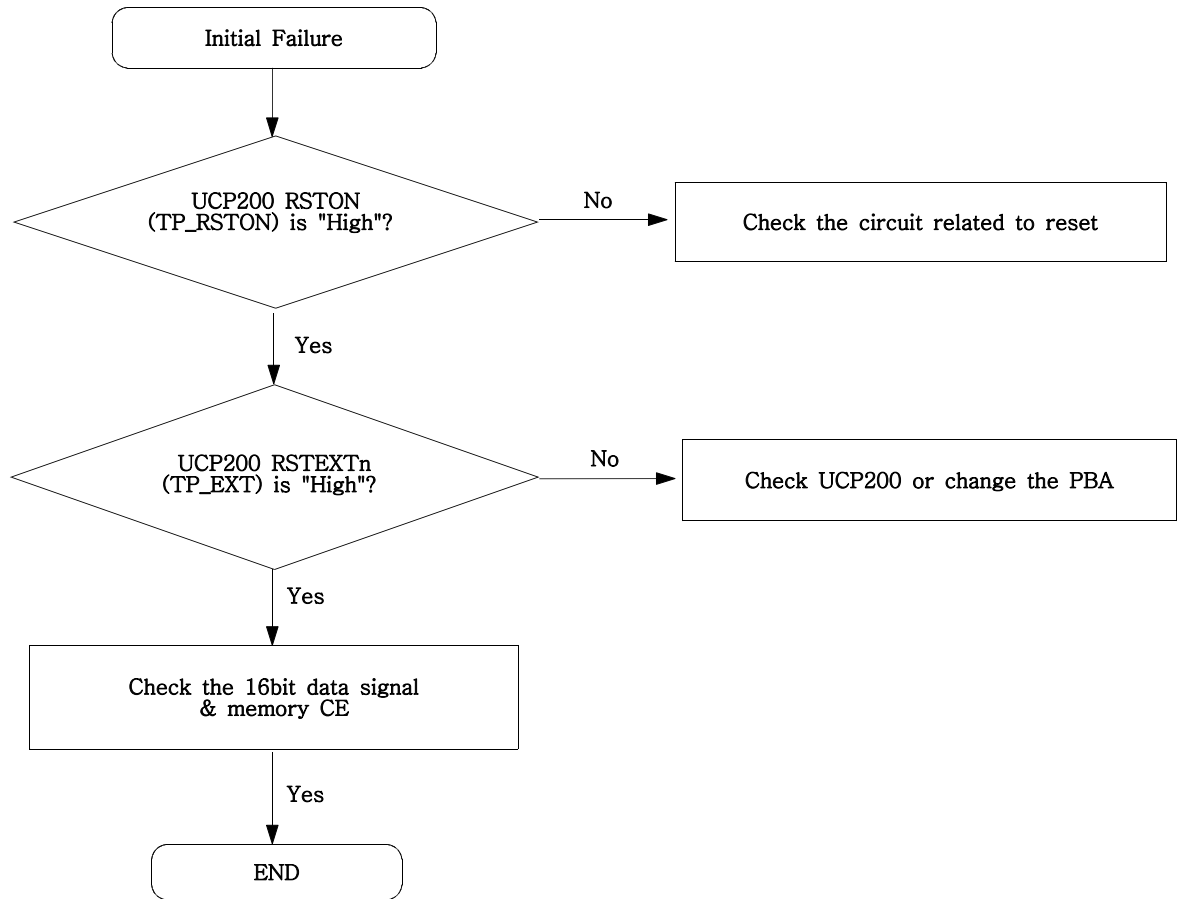
9-1. Power On



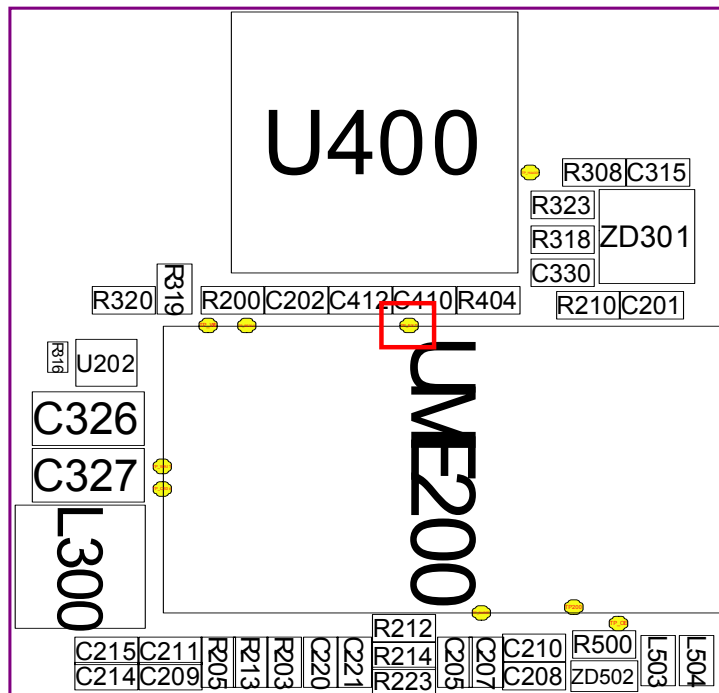
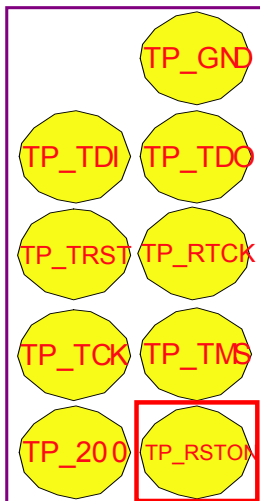
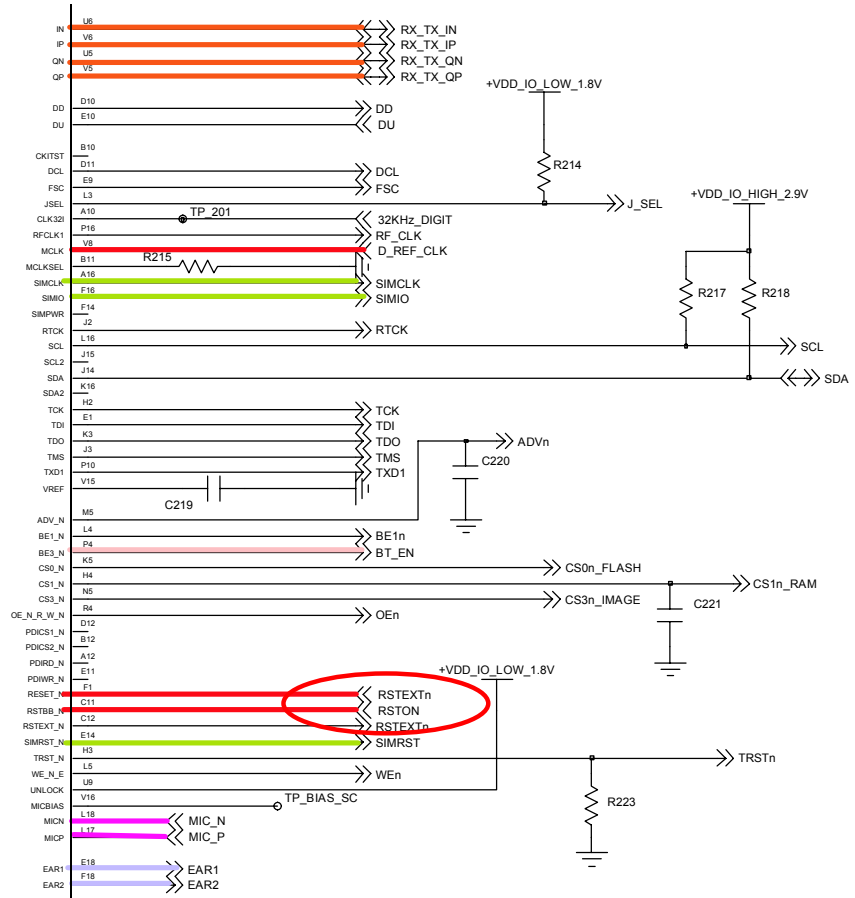
Flow Chart of Troubleshooting



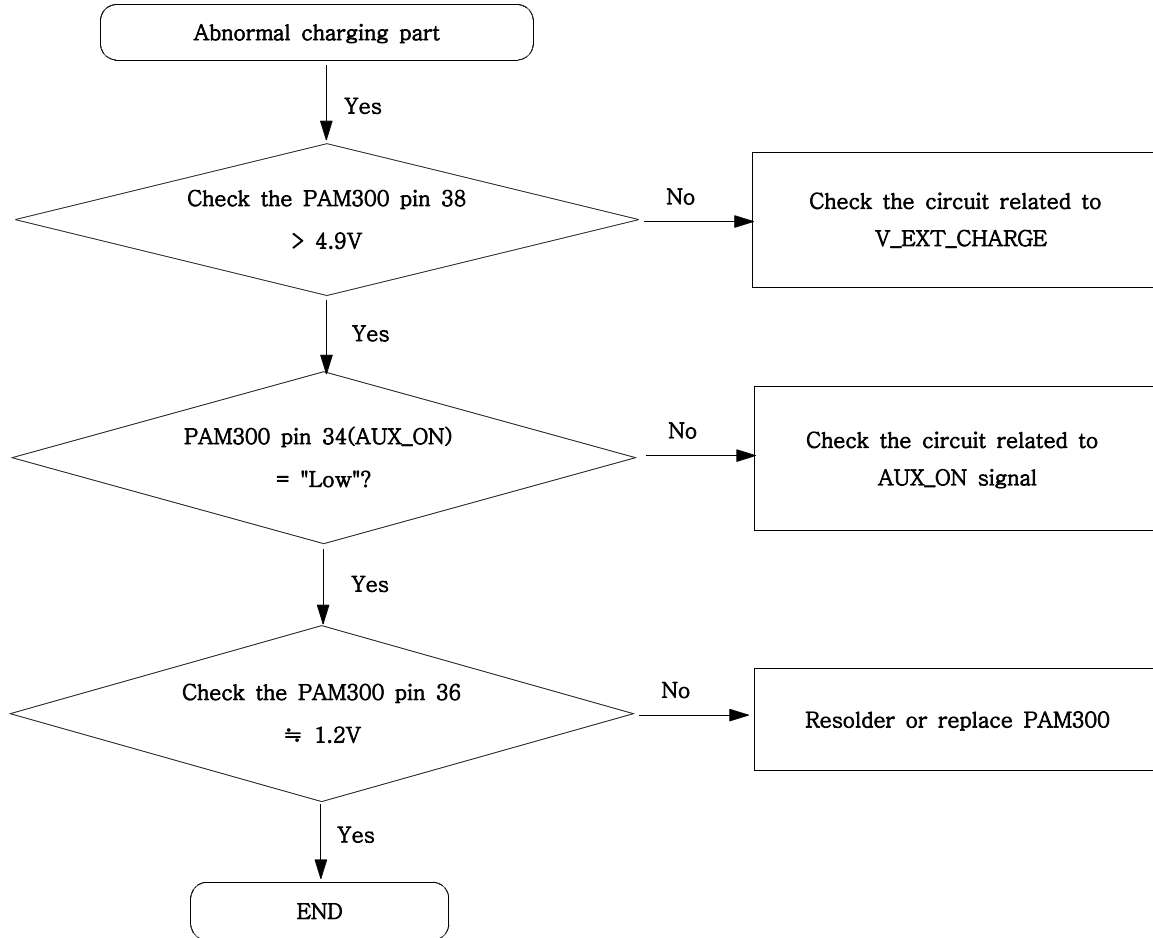
9-2. Initial



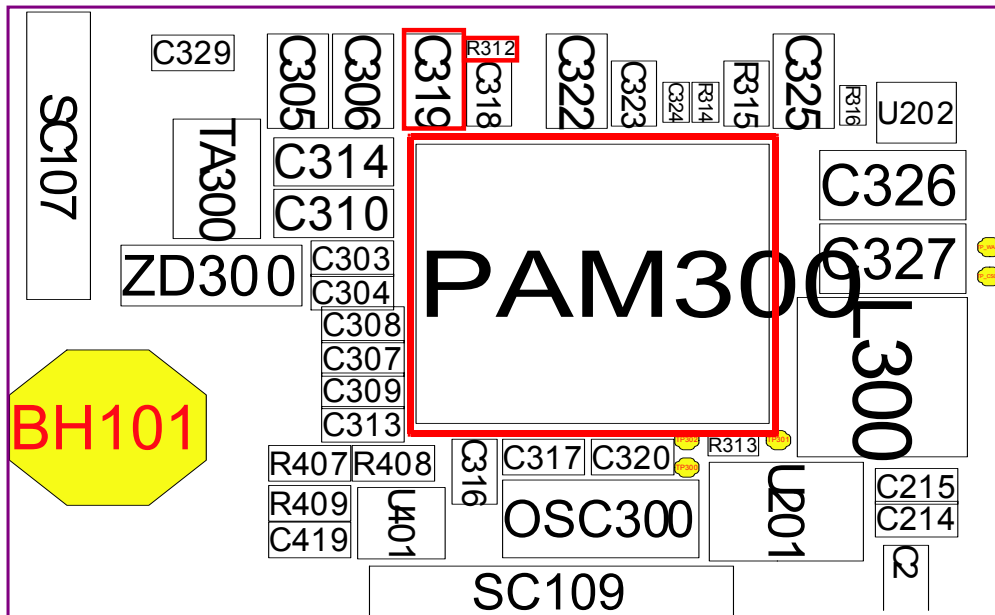
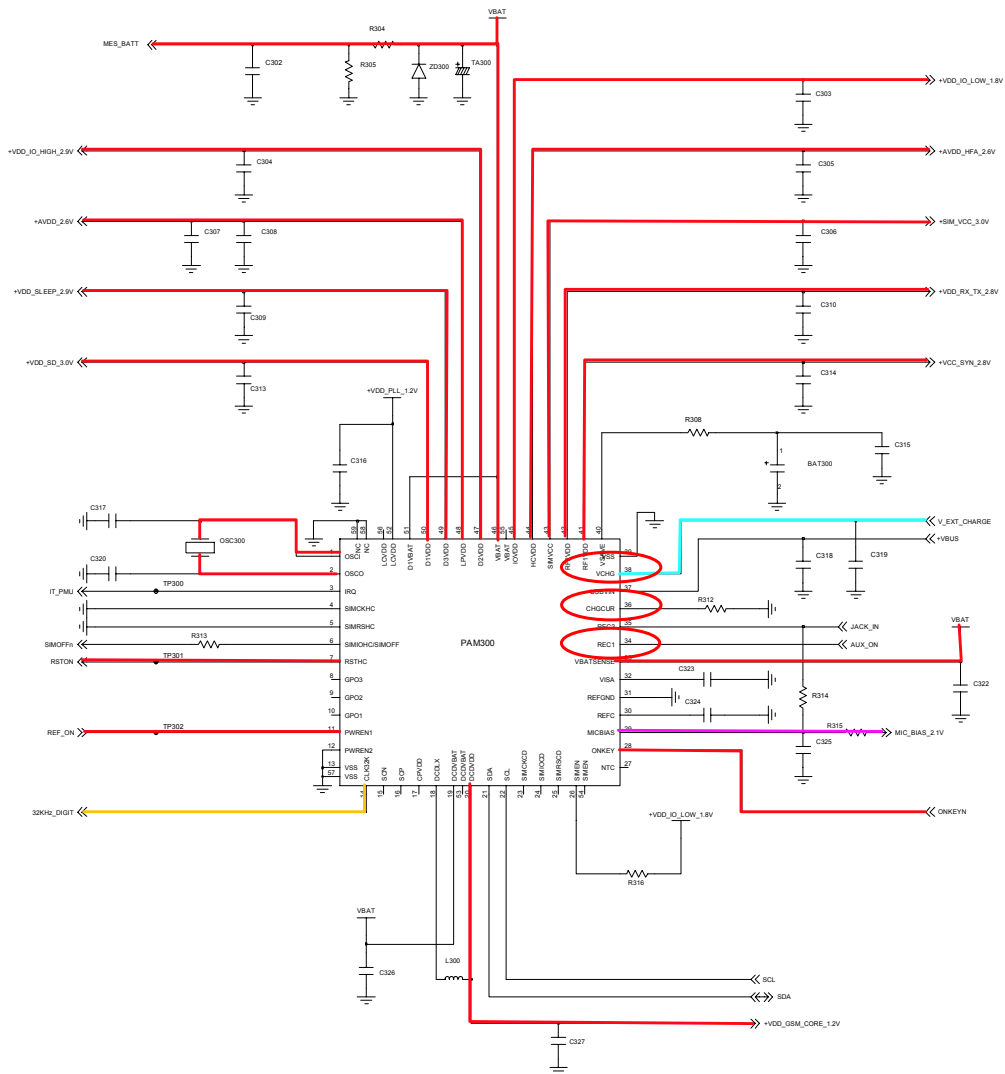
UCP200



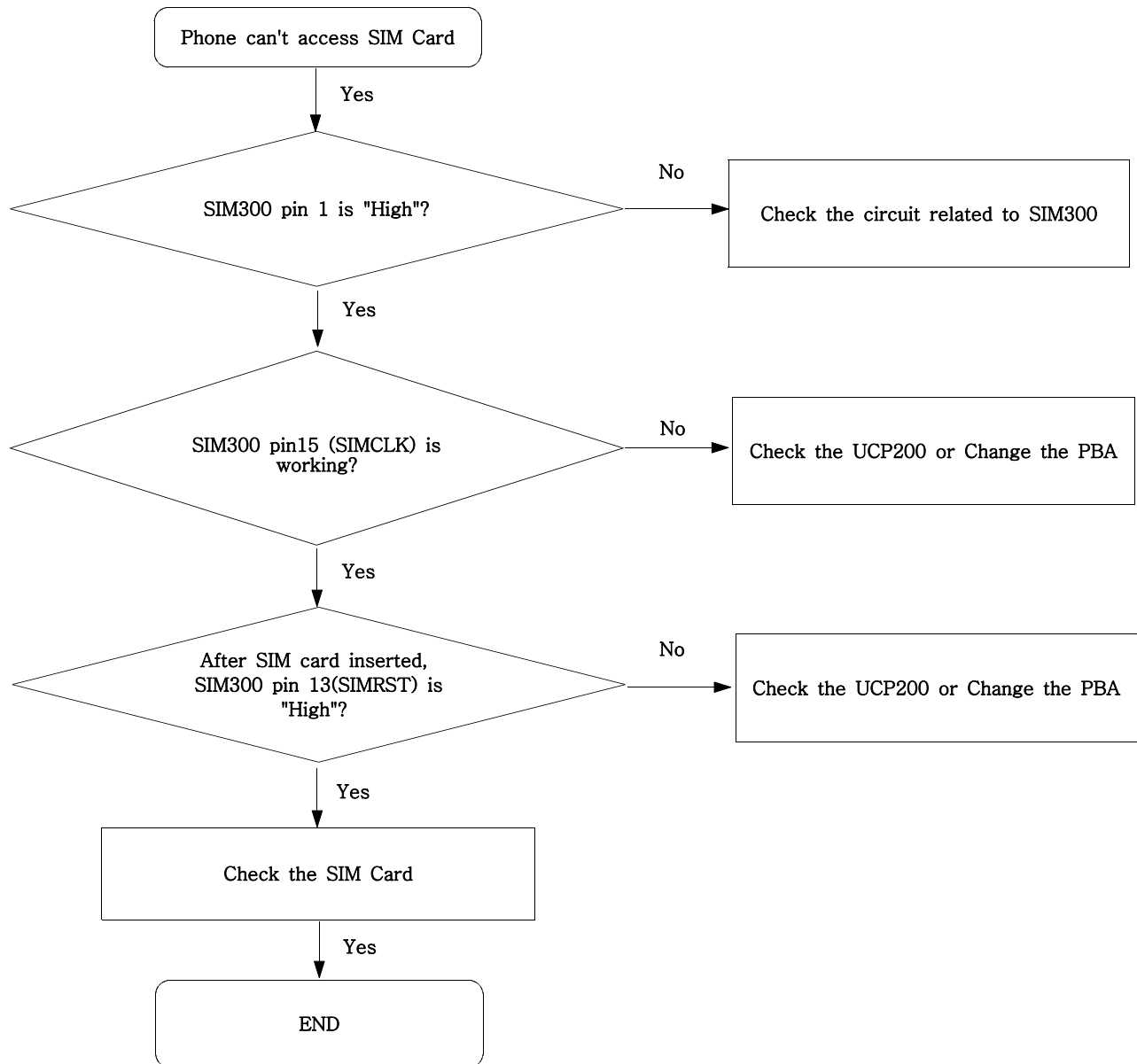
9-3. Charging Part



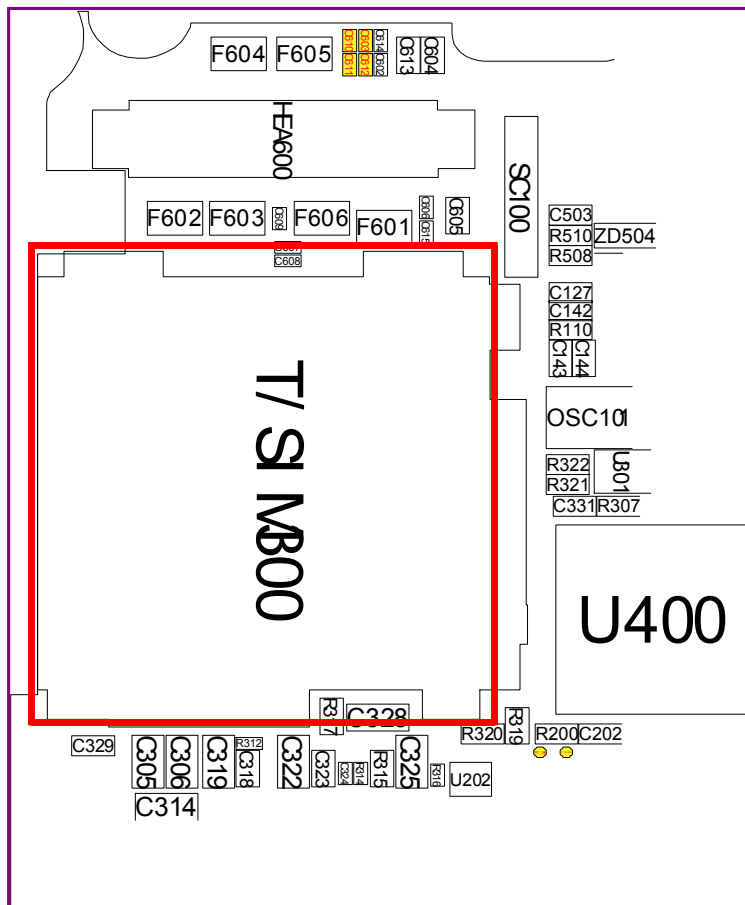
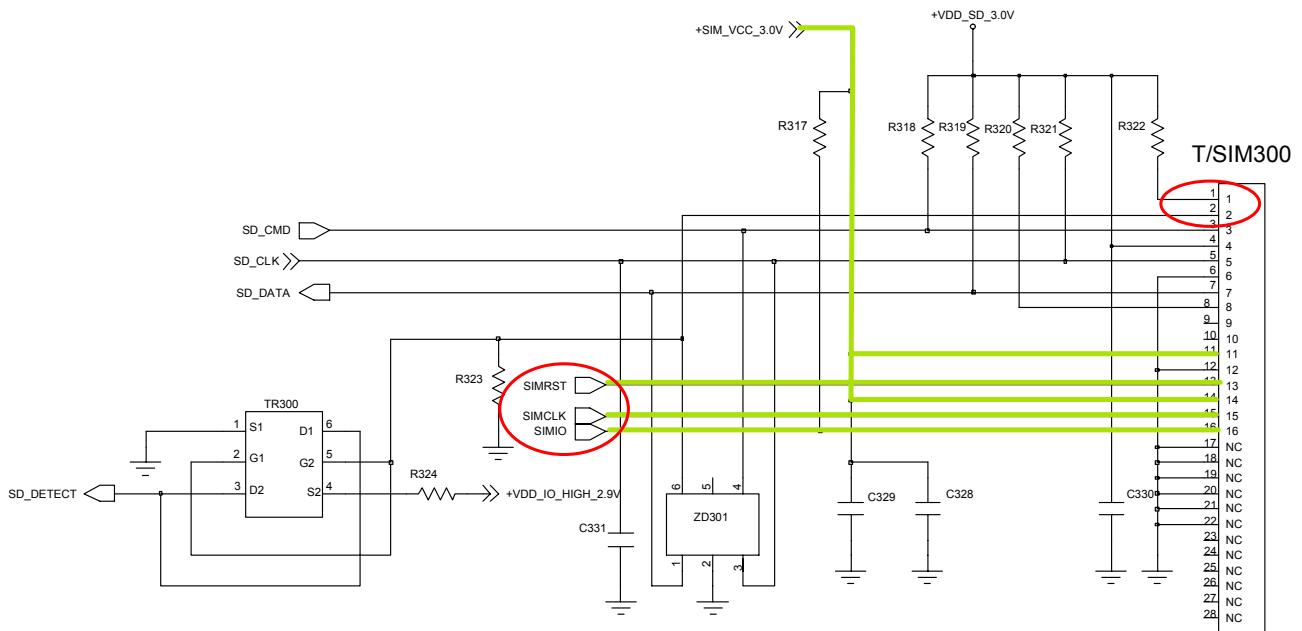
Flow Chart of Troubleshooting



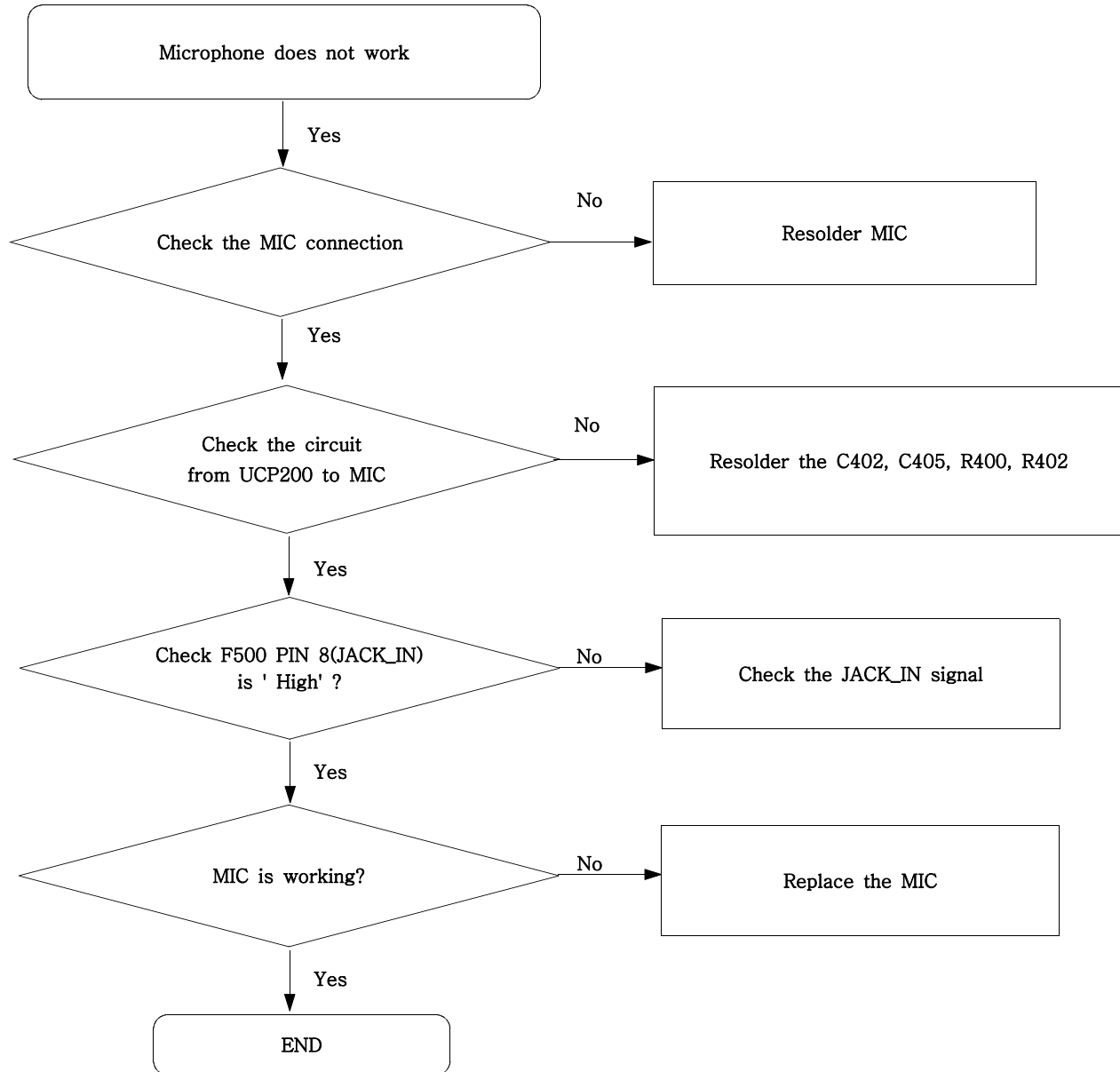
9-4. Sim Part



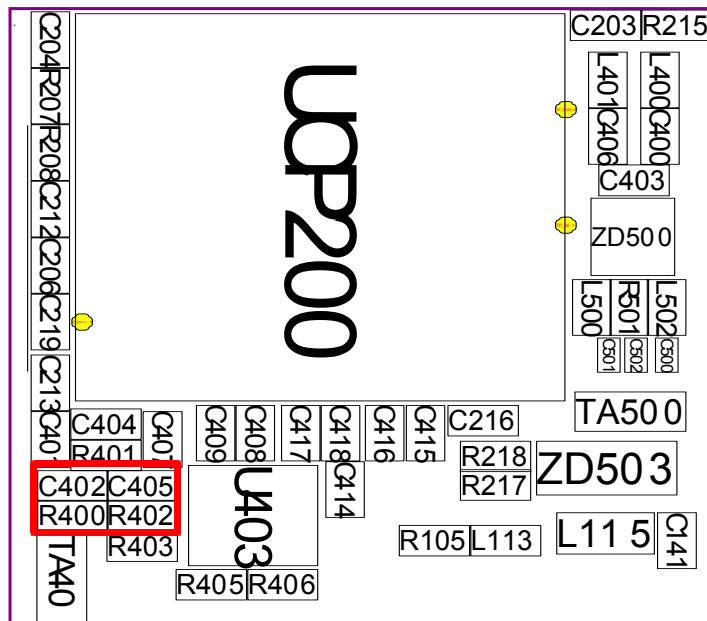
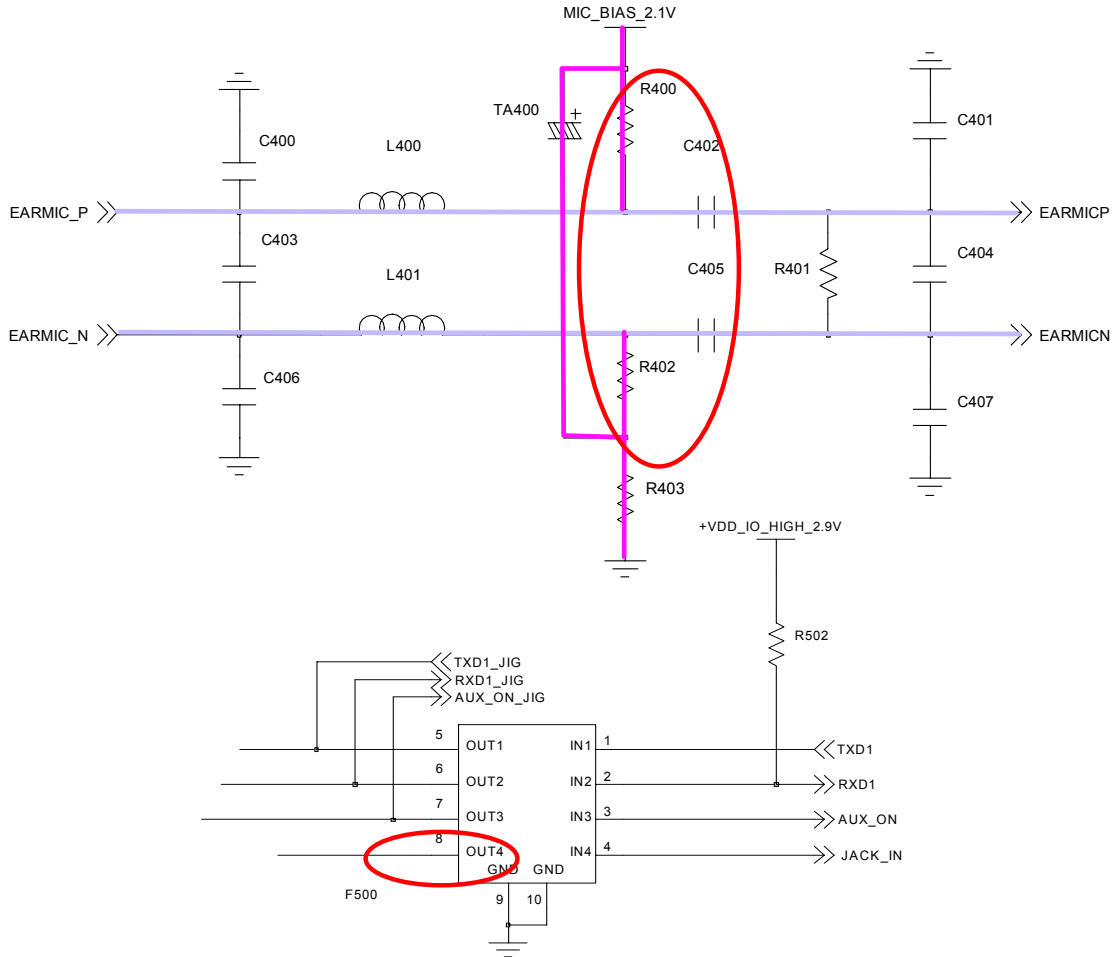
Flow Chart of Troubleshooting



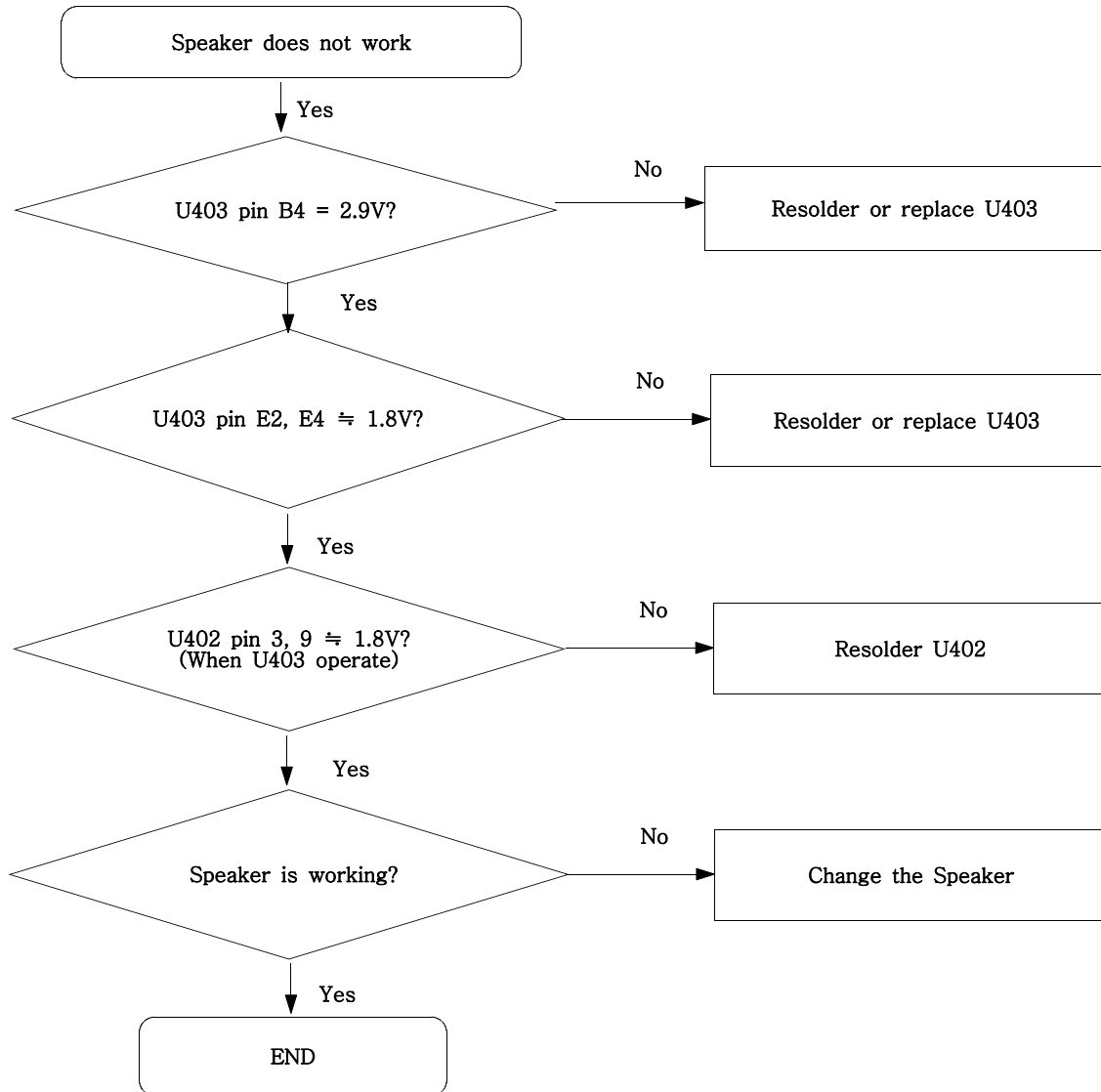
9-5. Microphone Part



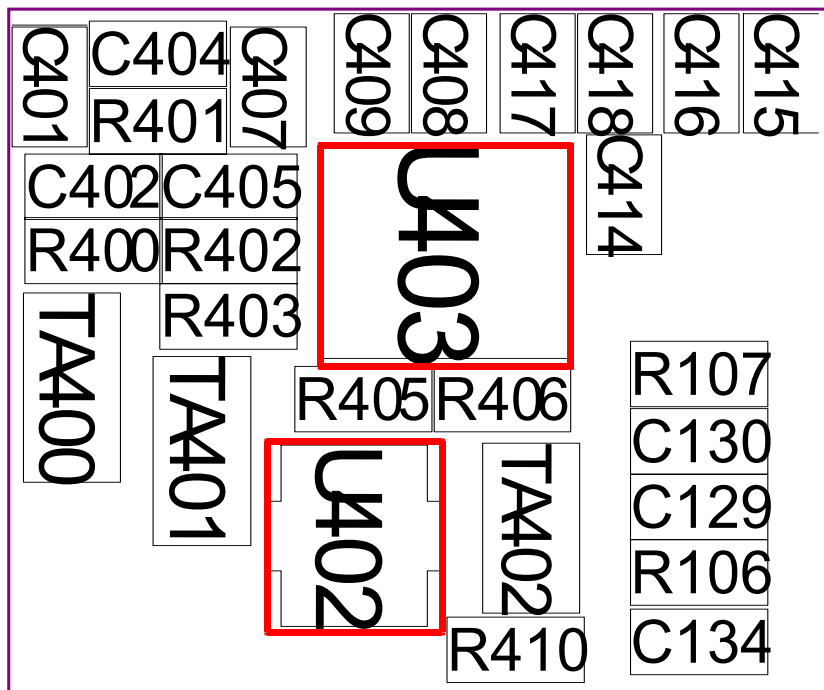
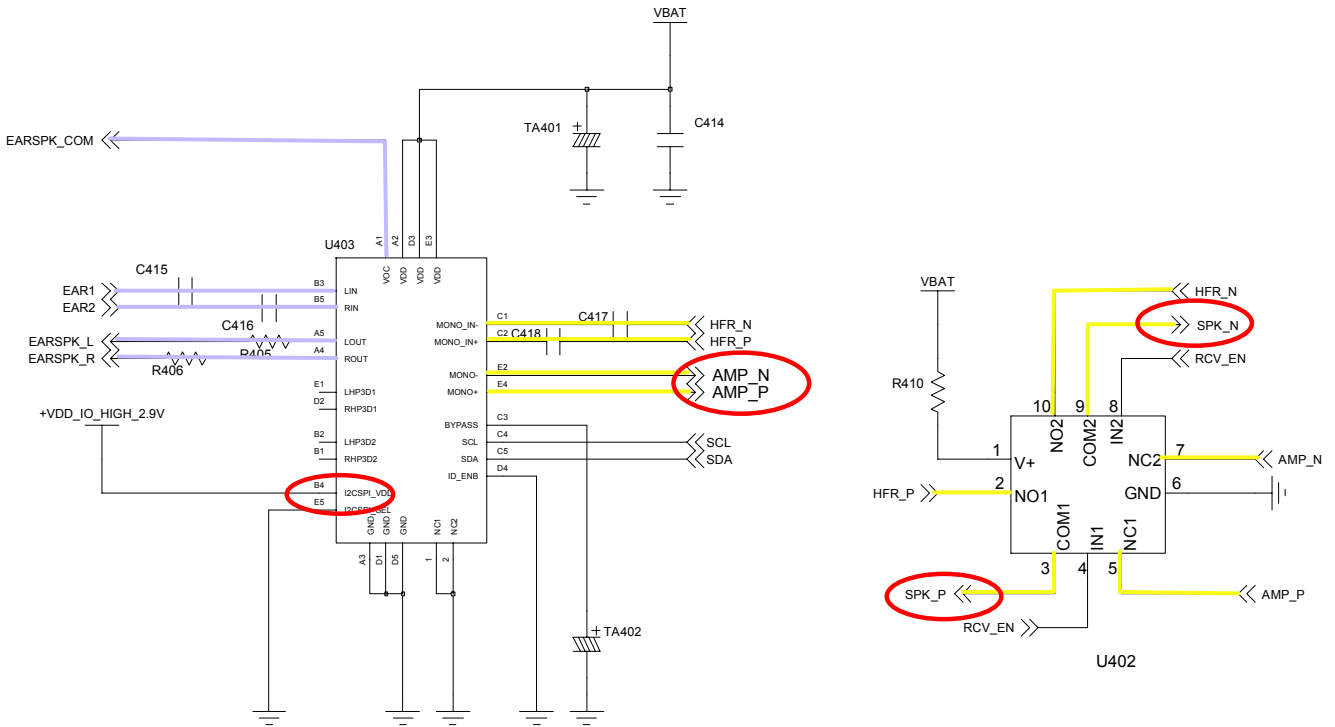
Flow Chart of Troubleshooting



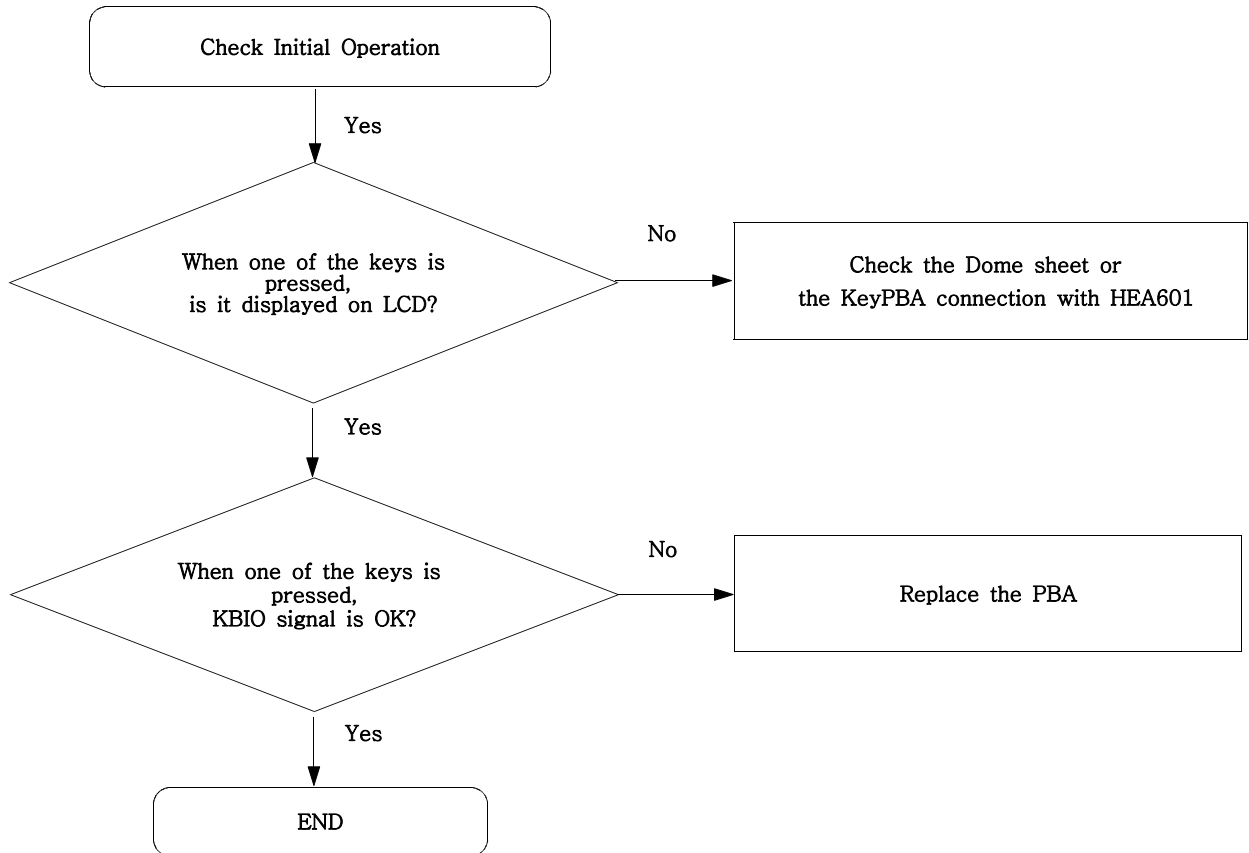
9-6. Speaker Part(Melody)



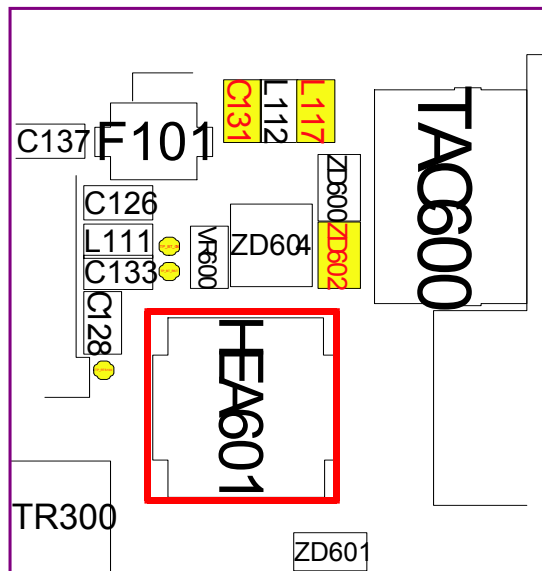
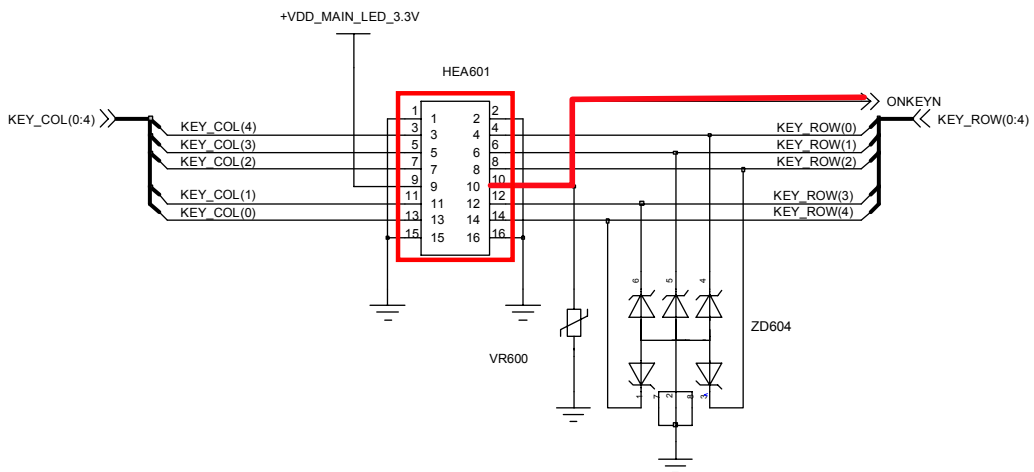
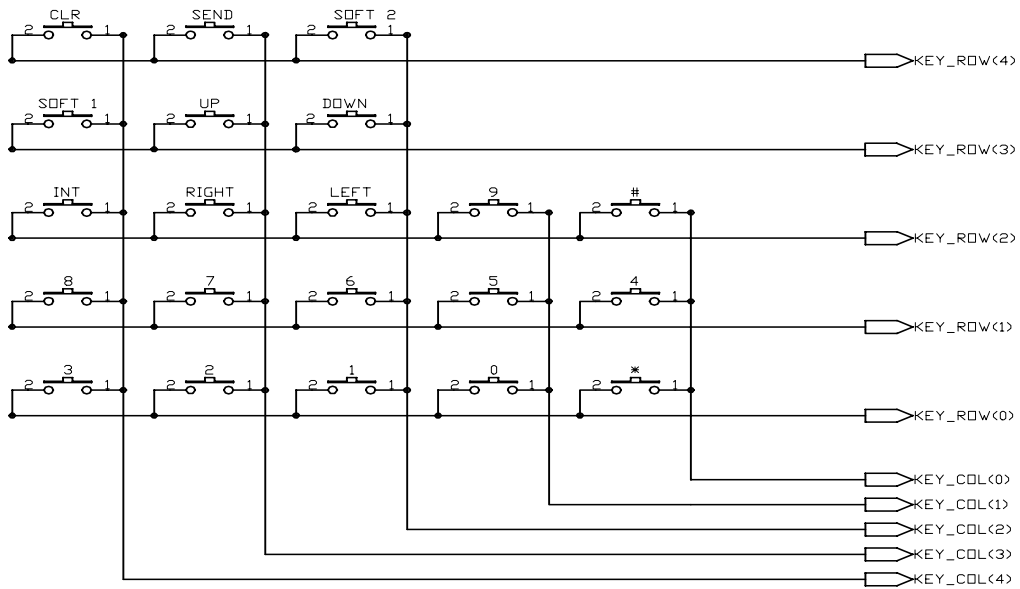
Flow Chart of Troubleshooting



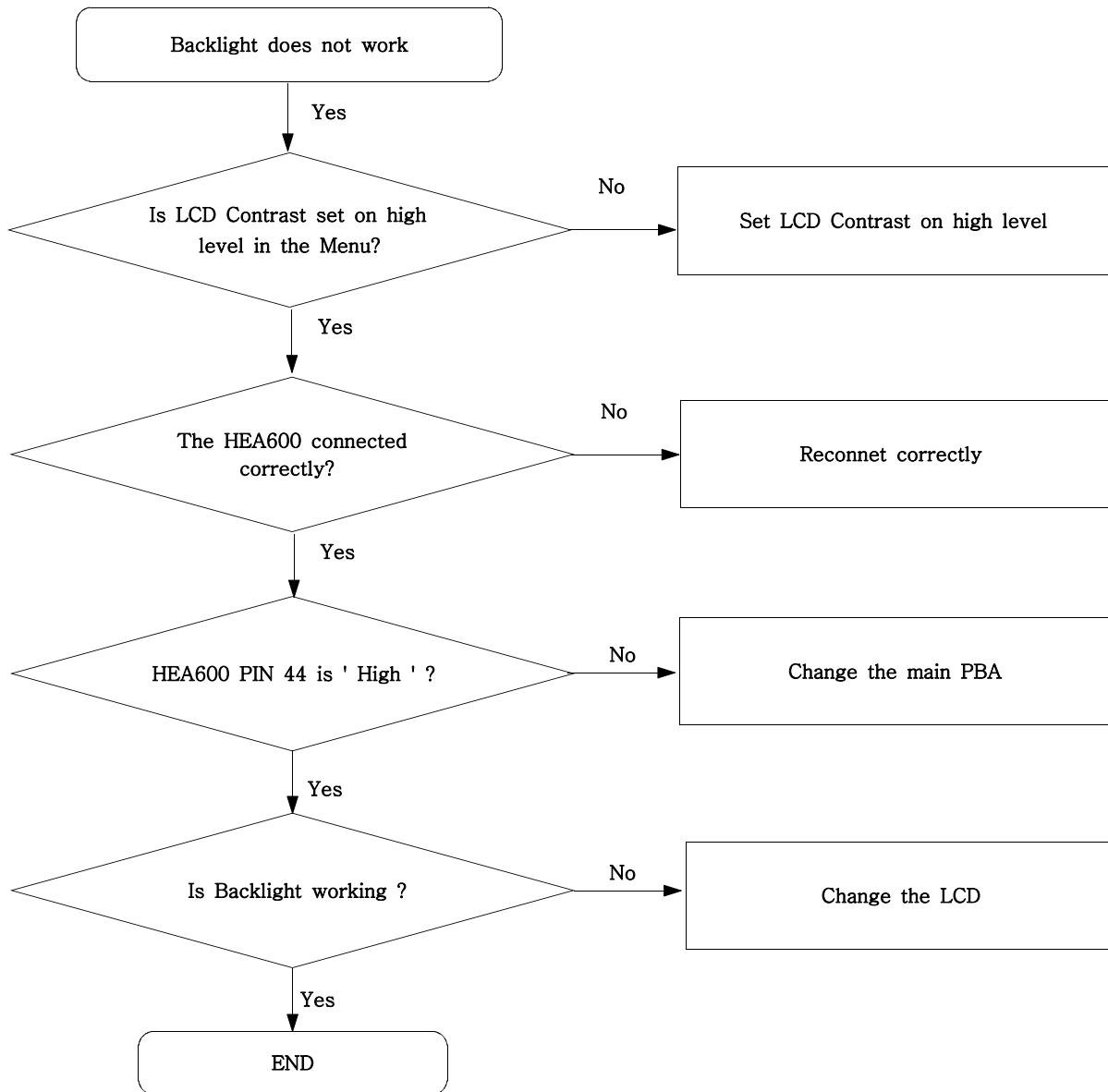
9-7. Key Data Input



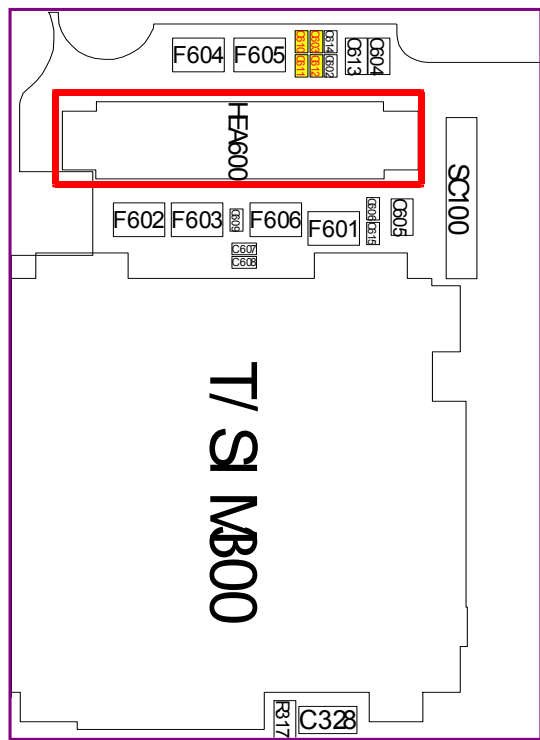
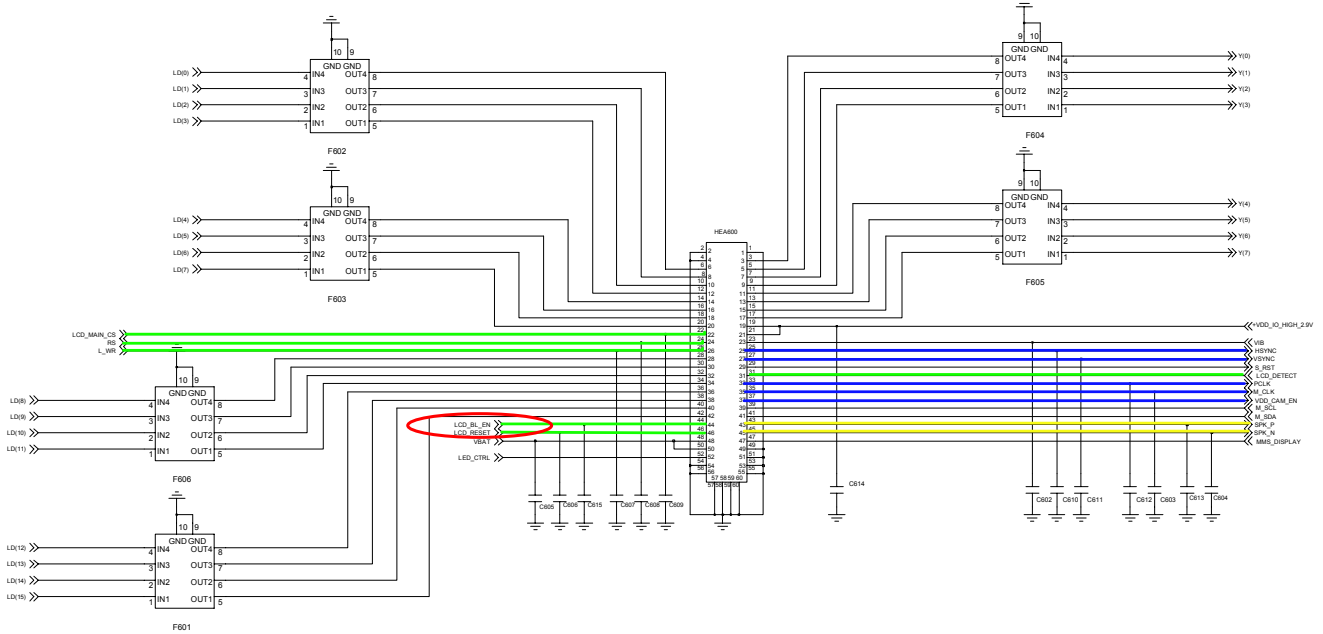
Flow Chart of Troubleshooting



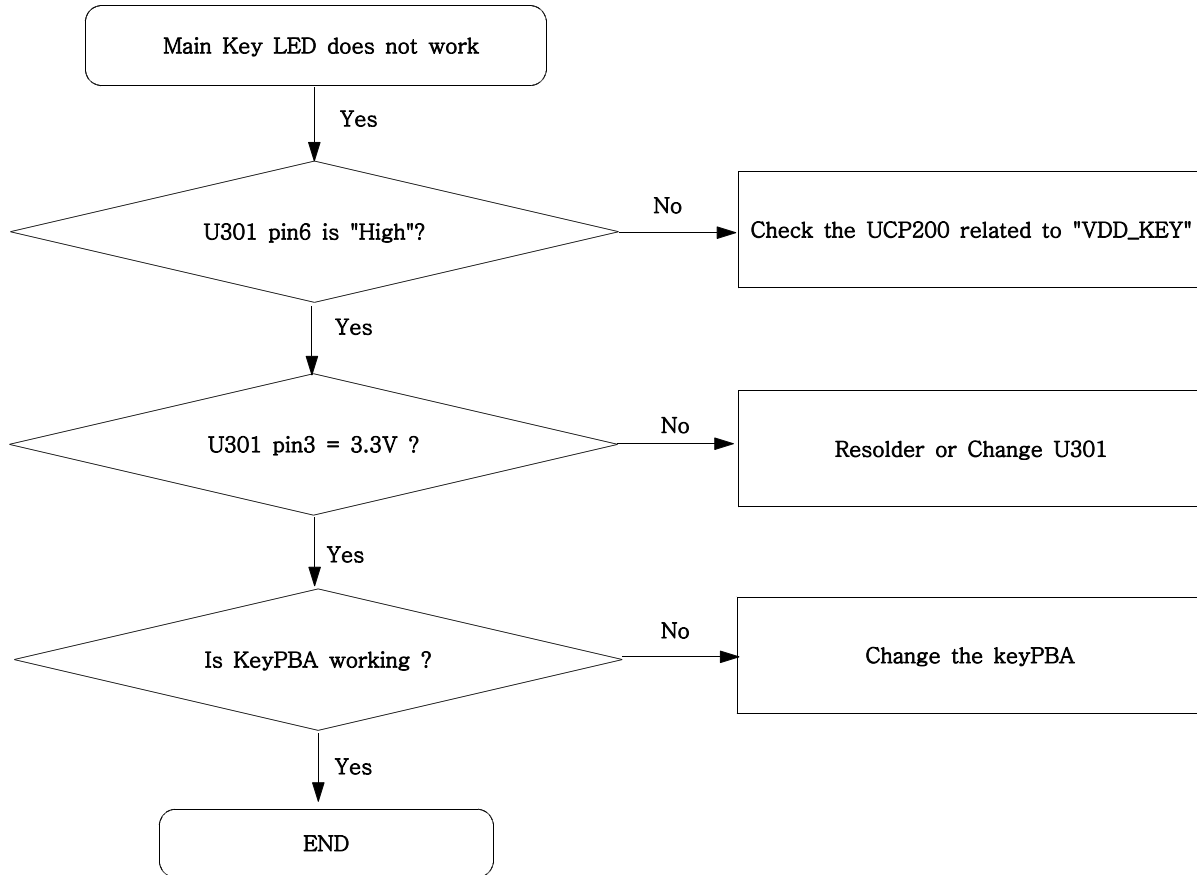
9-8. Back Light (for Color Main LCD)

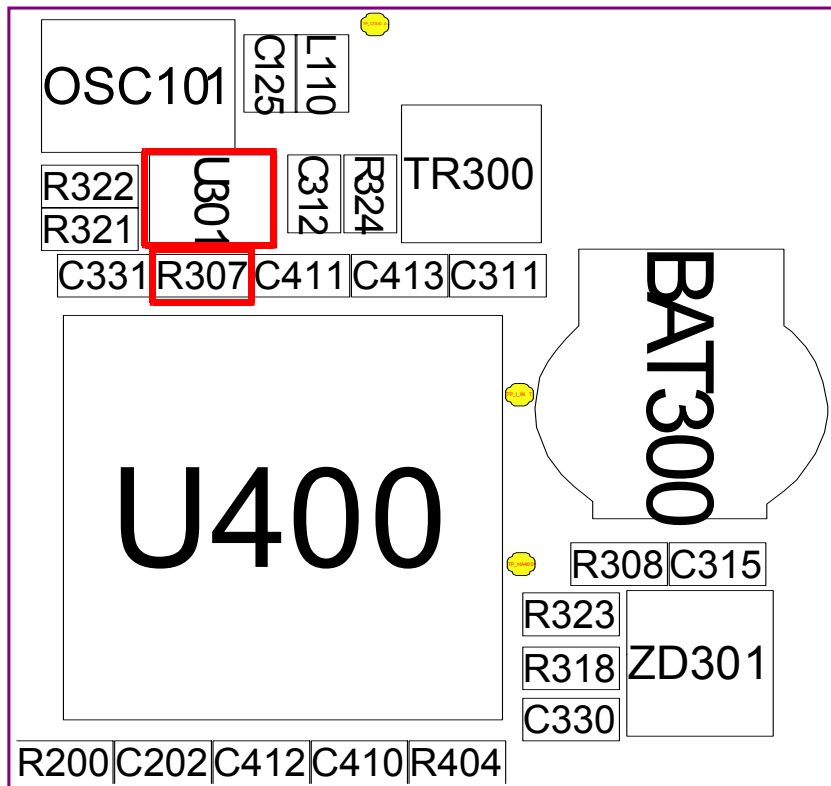
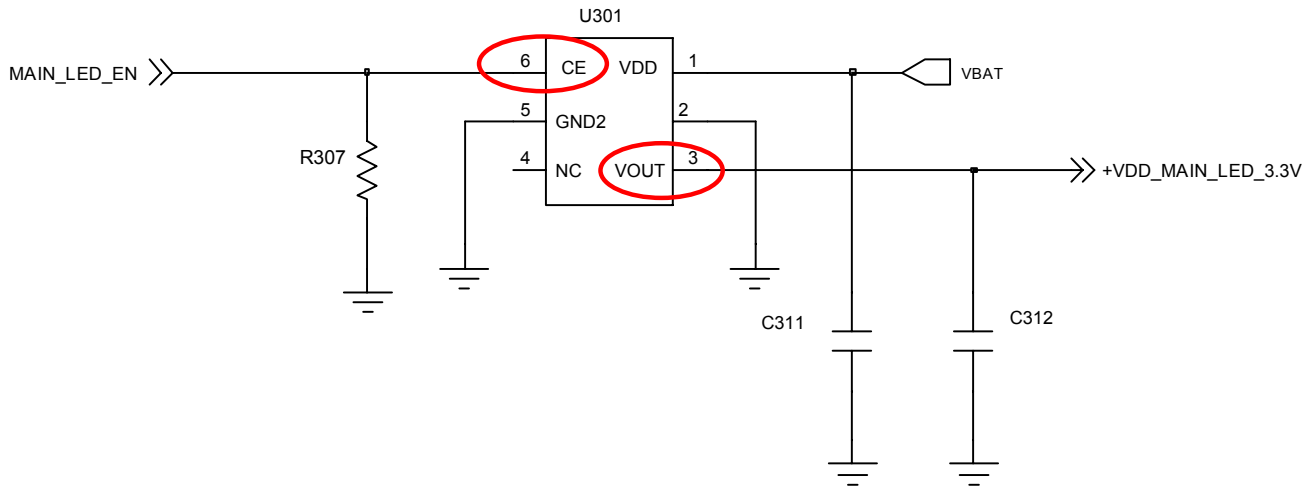


Flow Chart of Troubleshooting

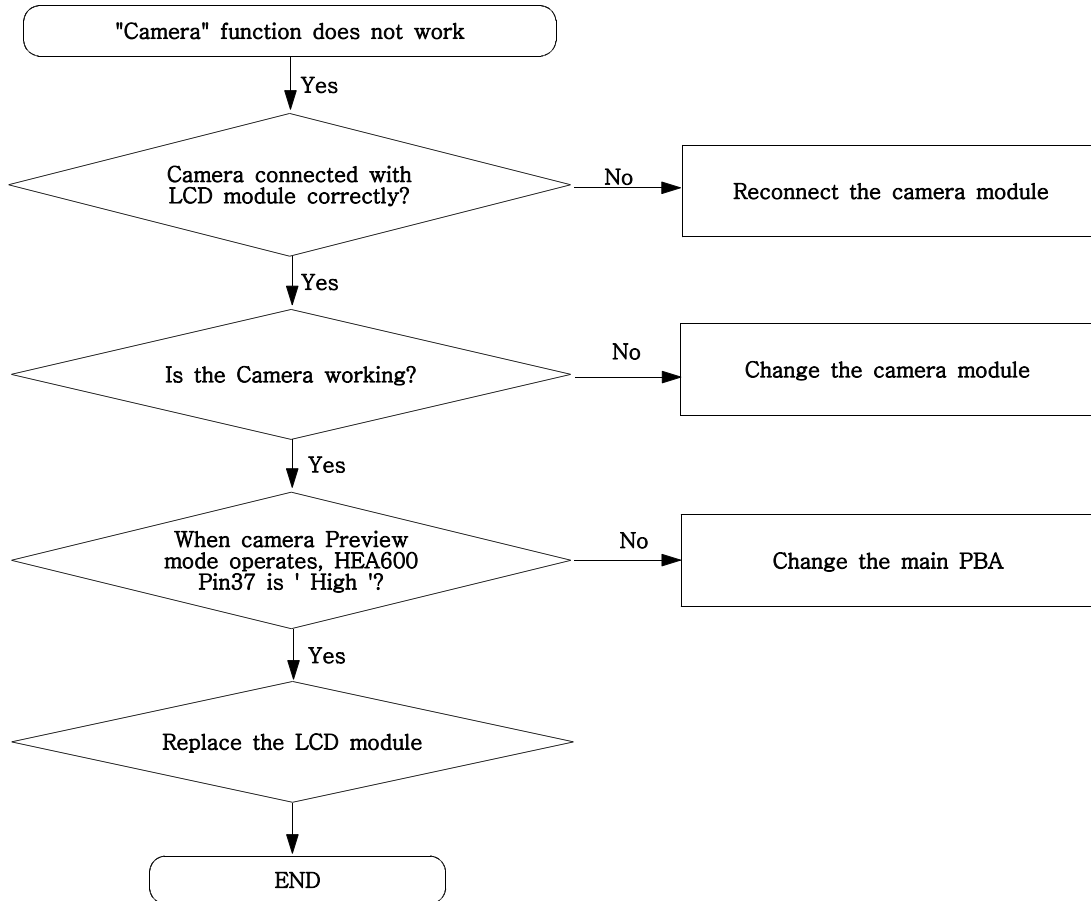


9-9. Key Back Light

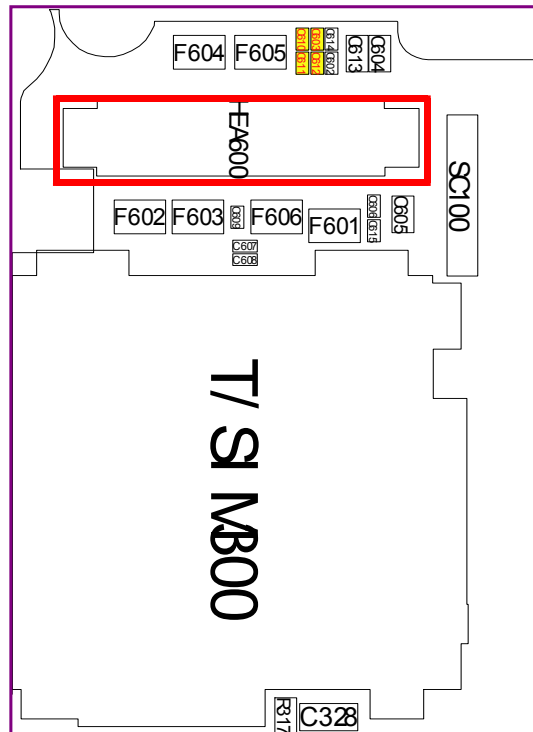
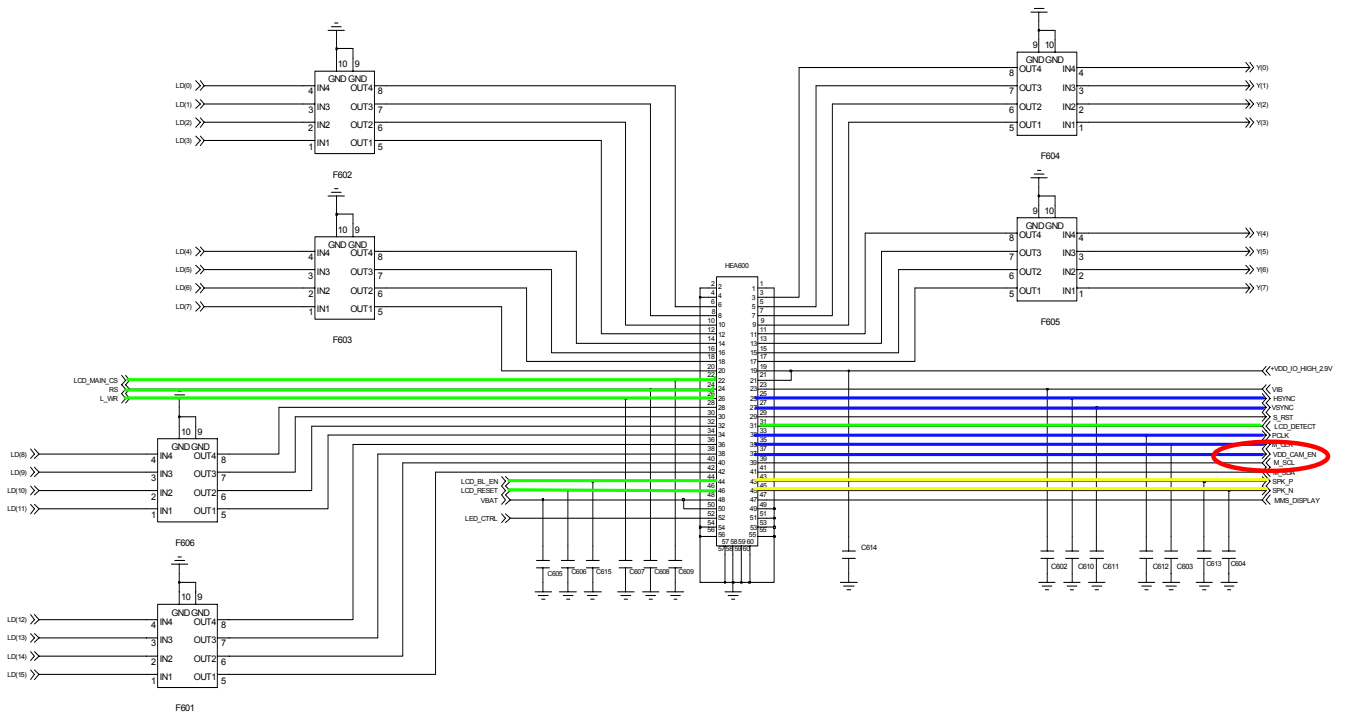




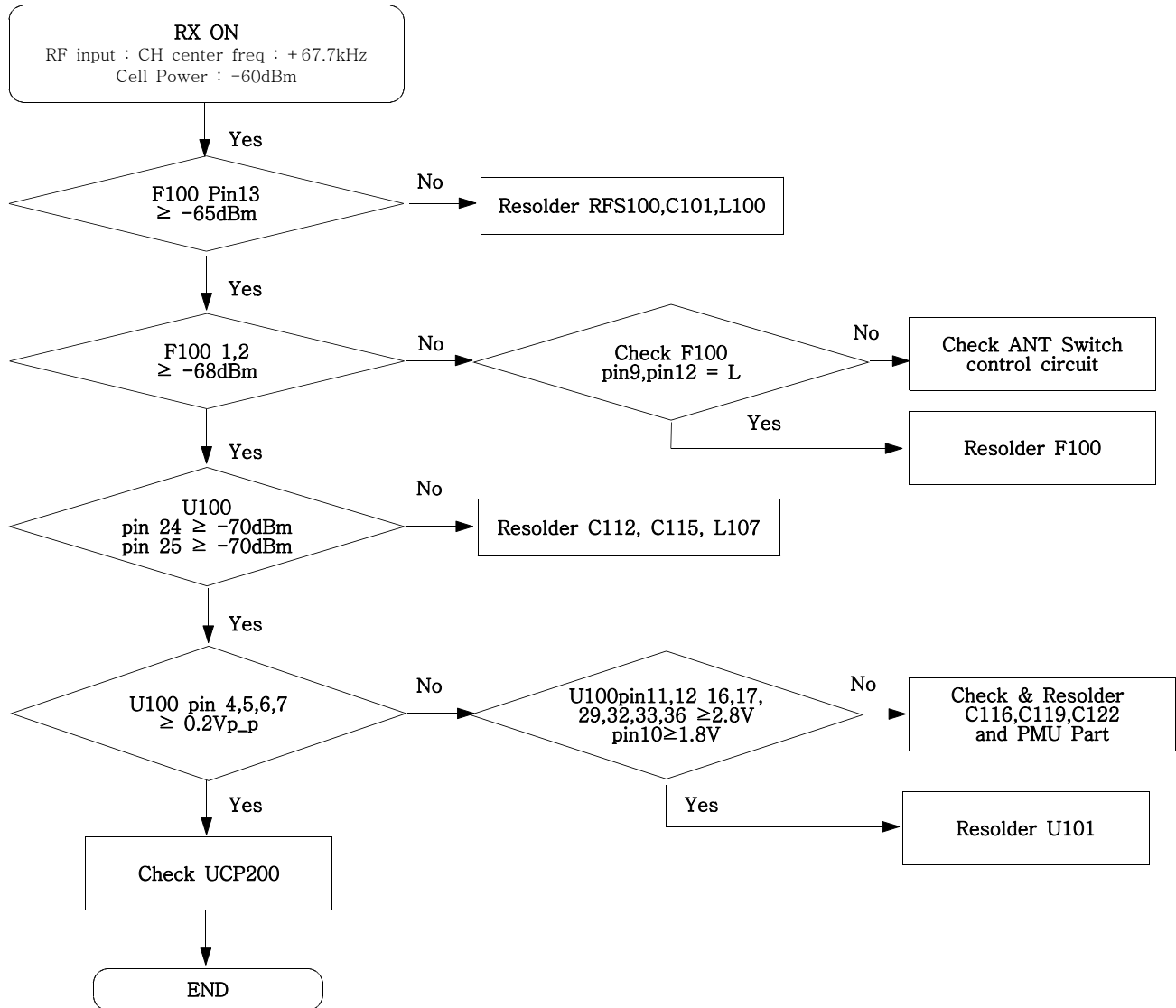
9-10. Camera part



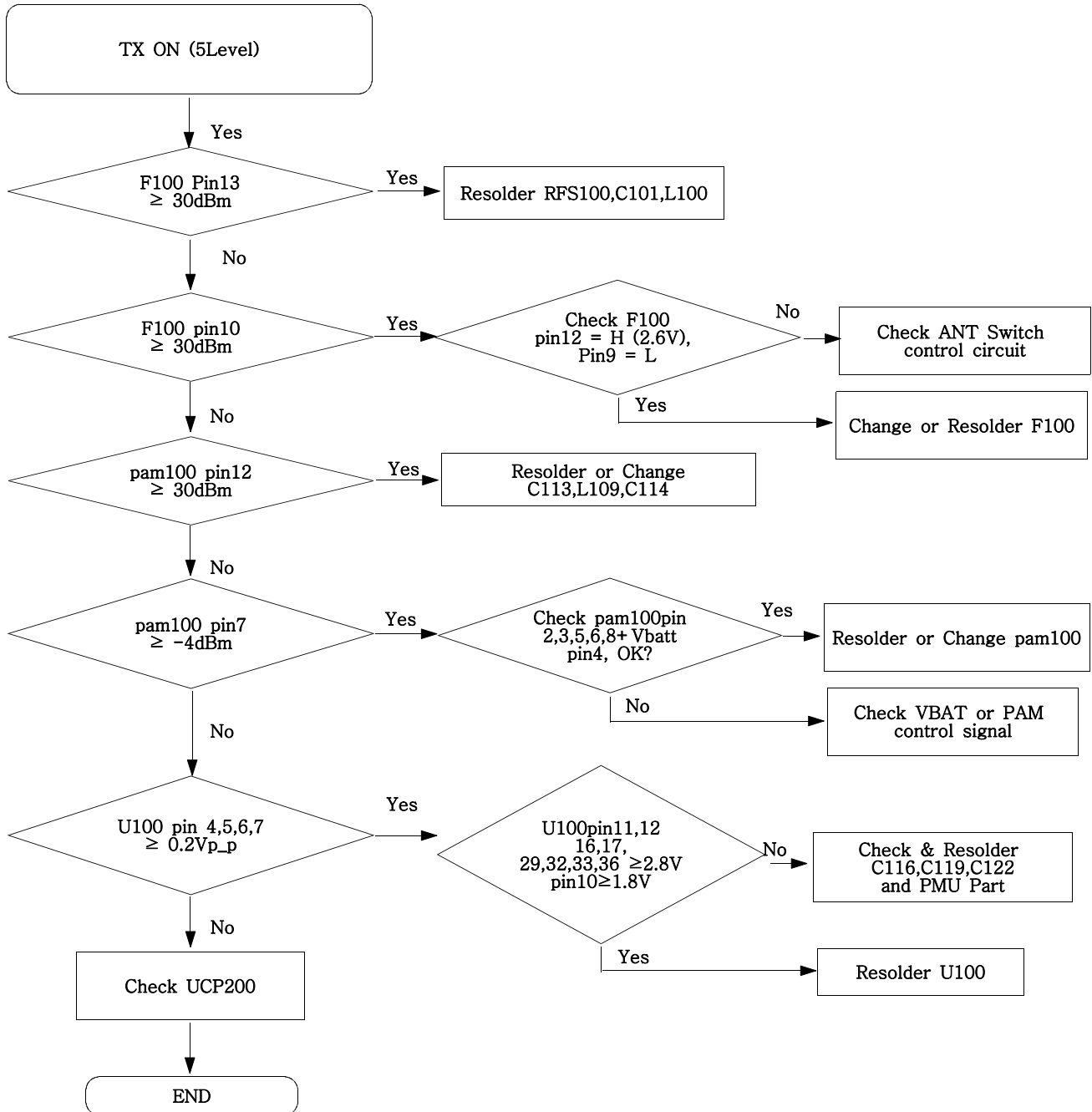
Flow Chart of Troubleshooting



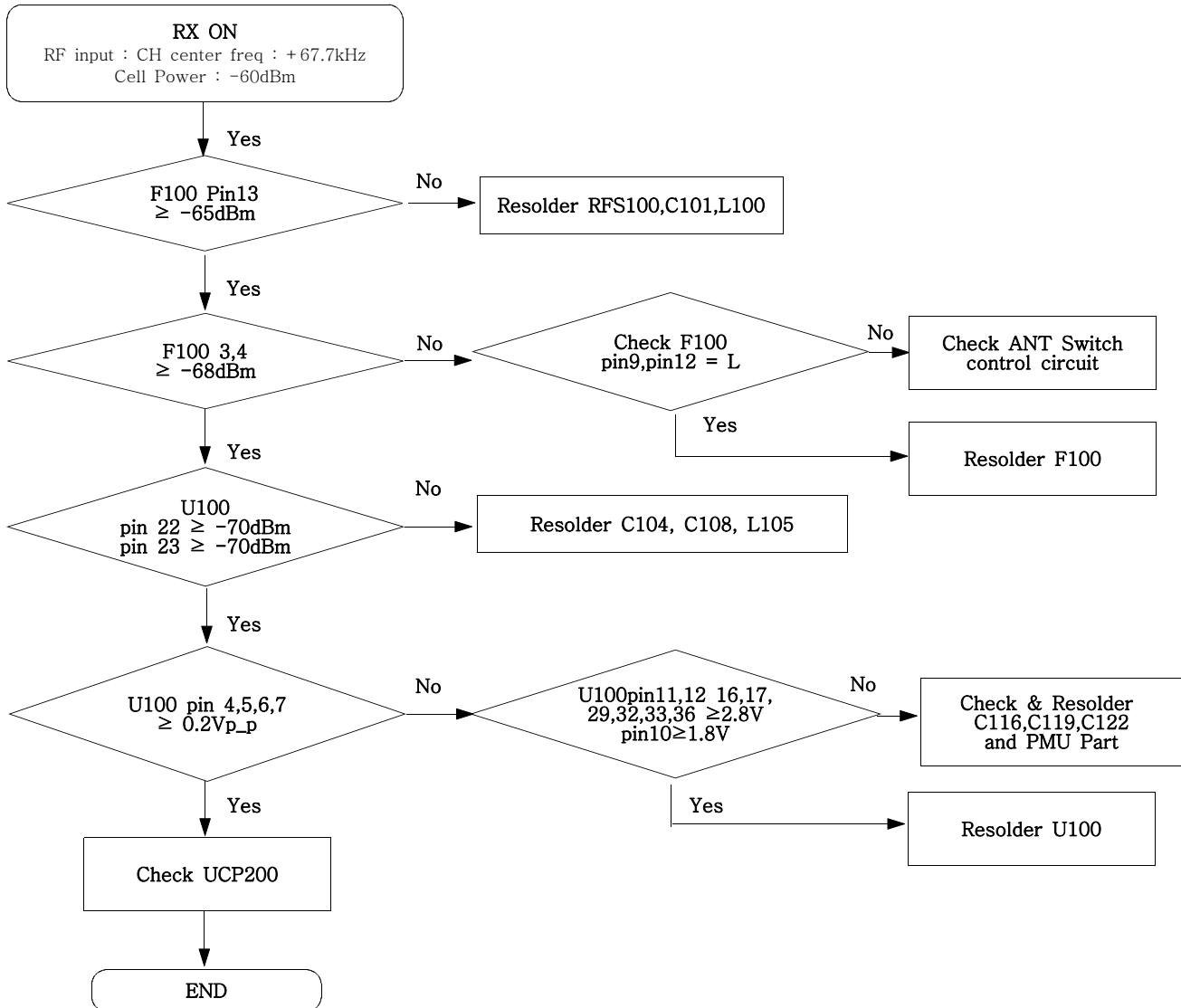
9-11. GSM Receiver



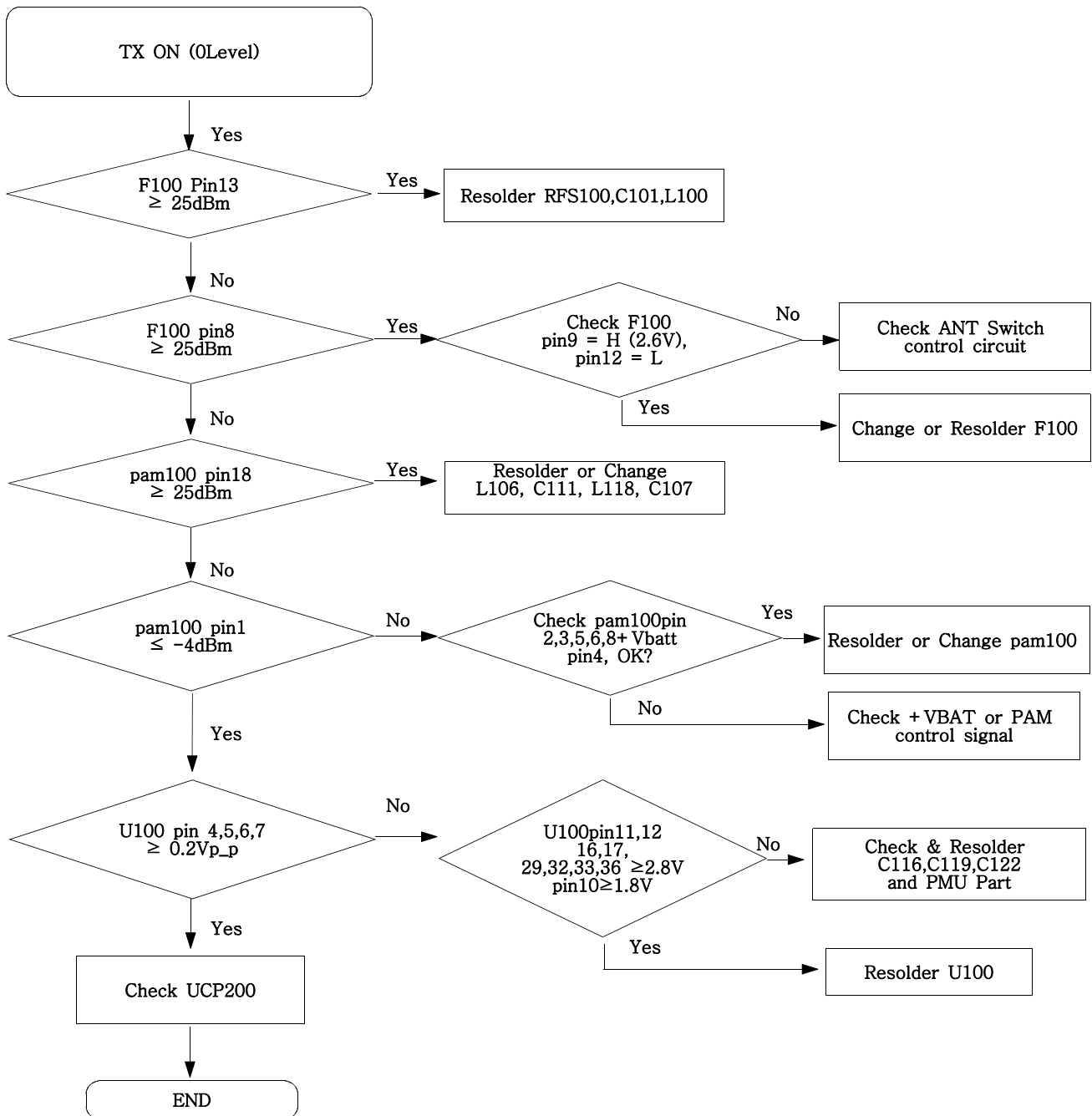
9-12. GSM Transmitter



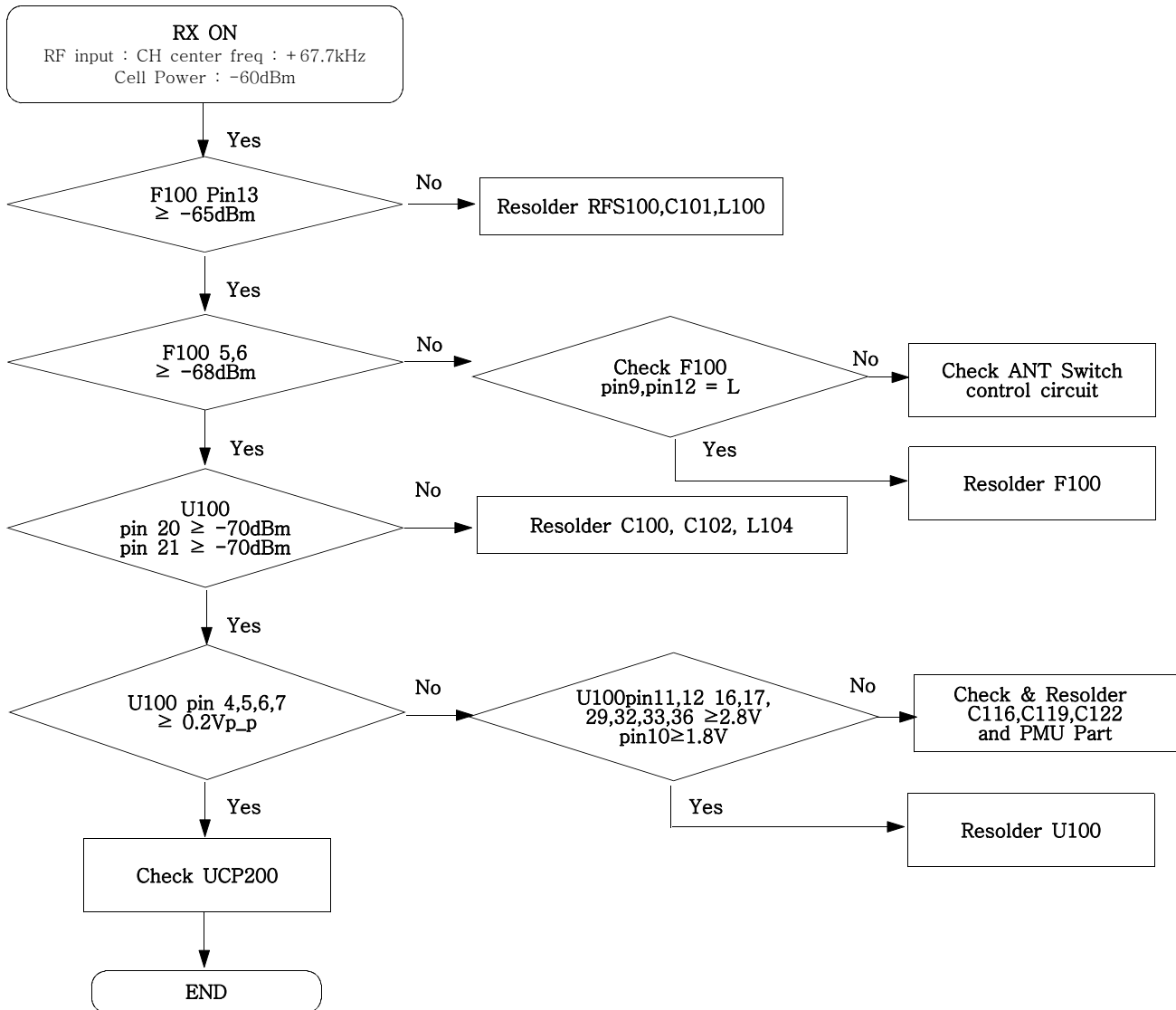
9-13. DCS Receiver



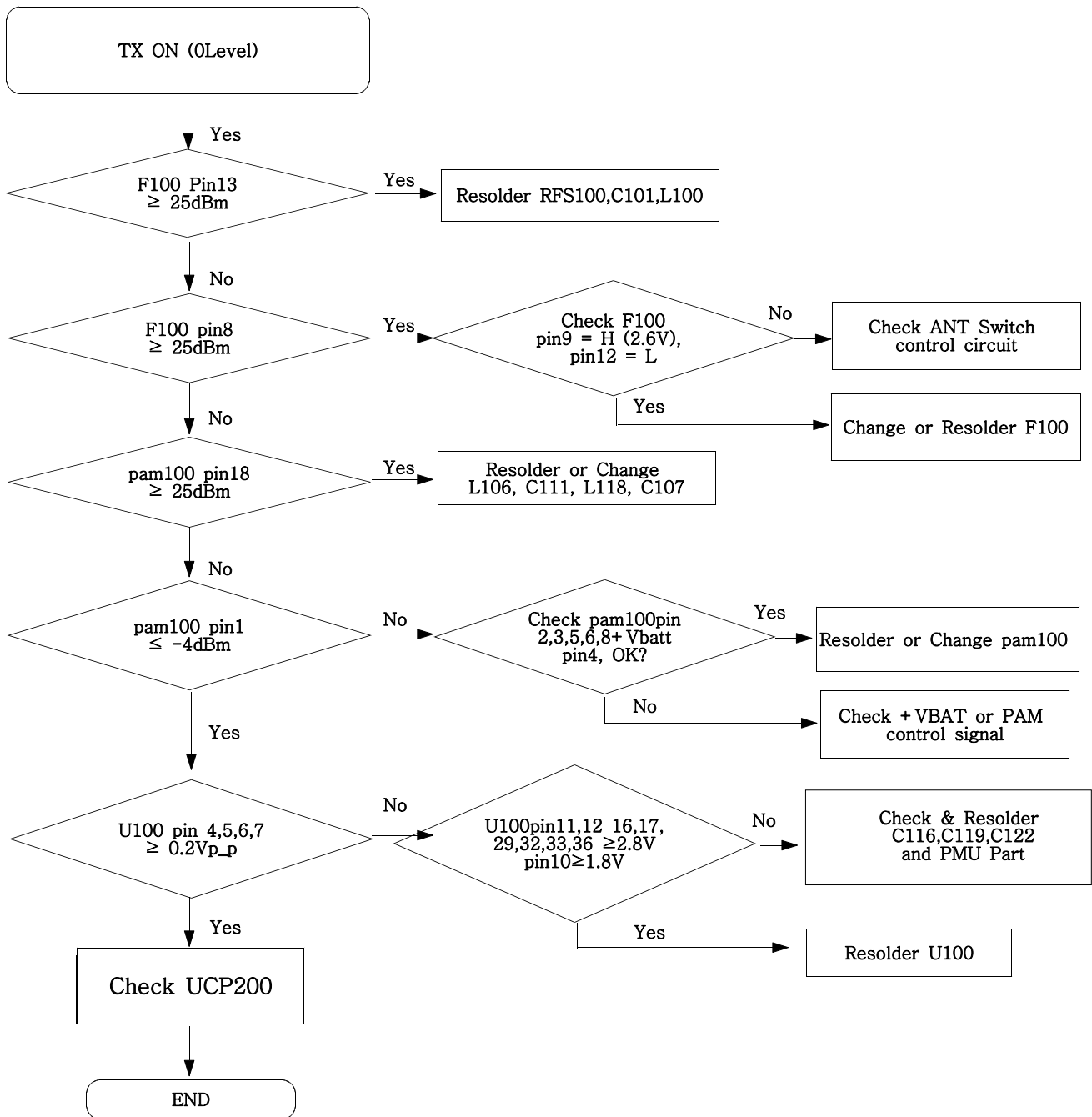
9-14. DCS Transmitter

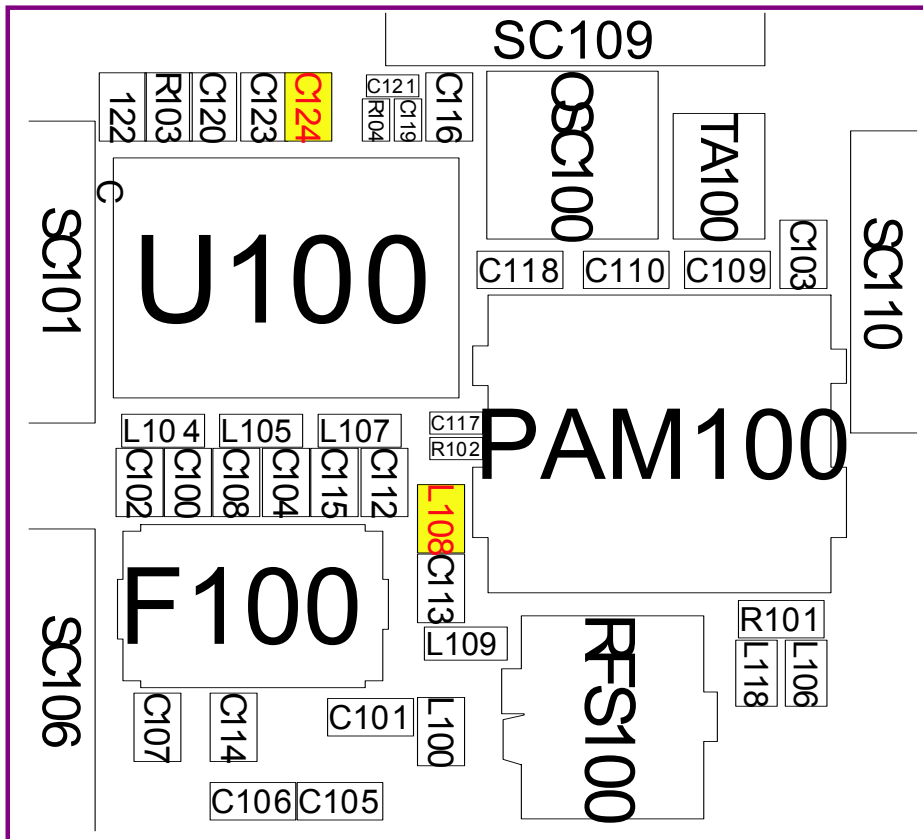
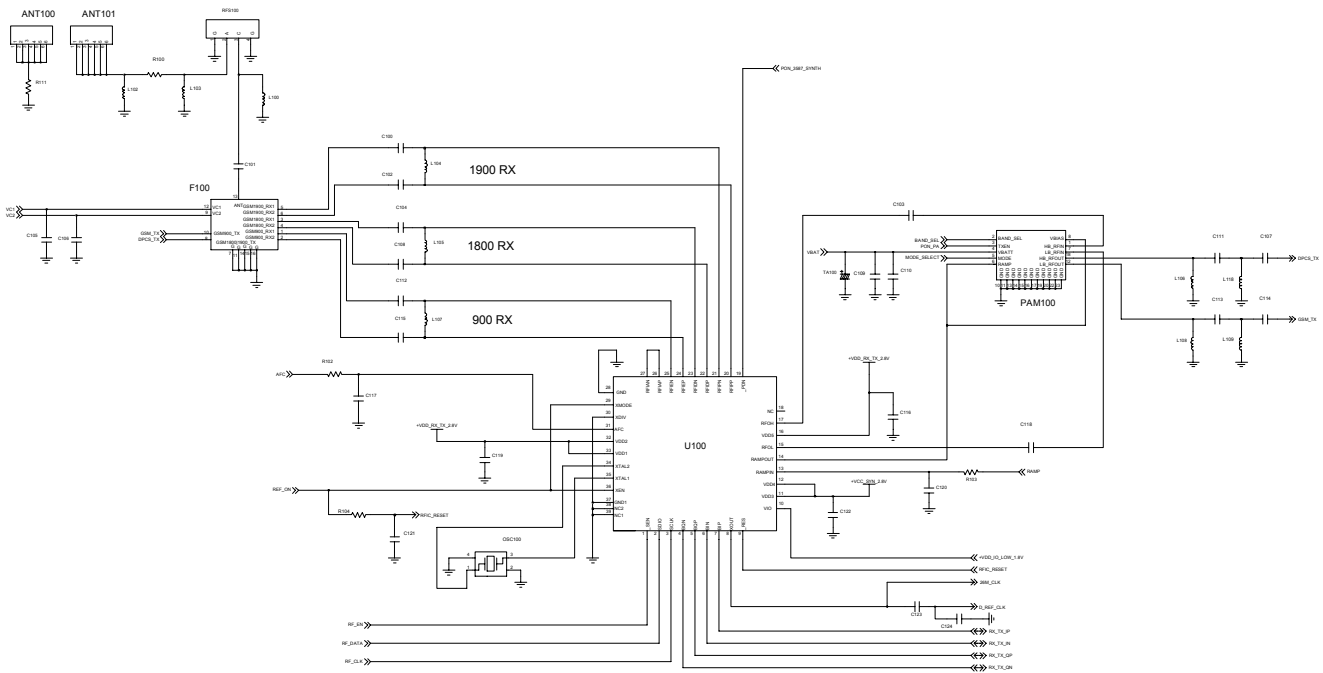


9-15. PCS Receiver

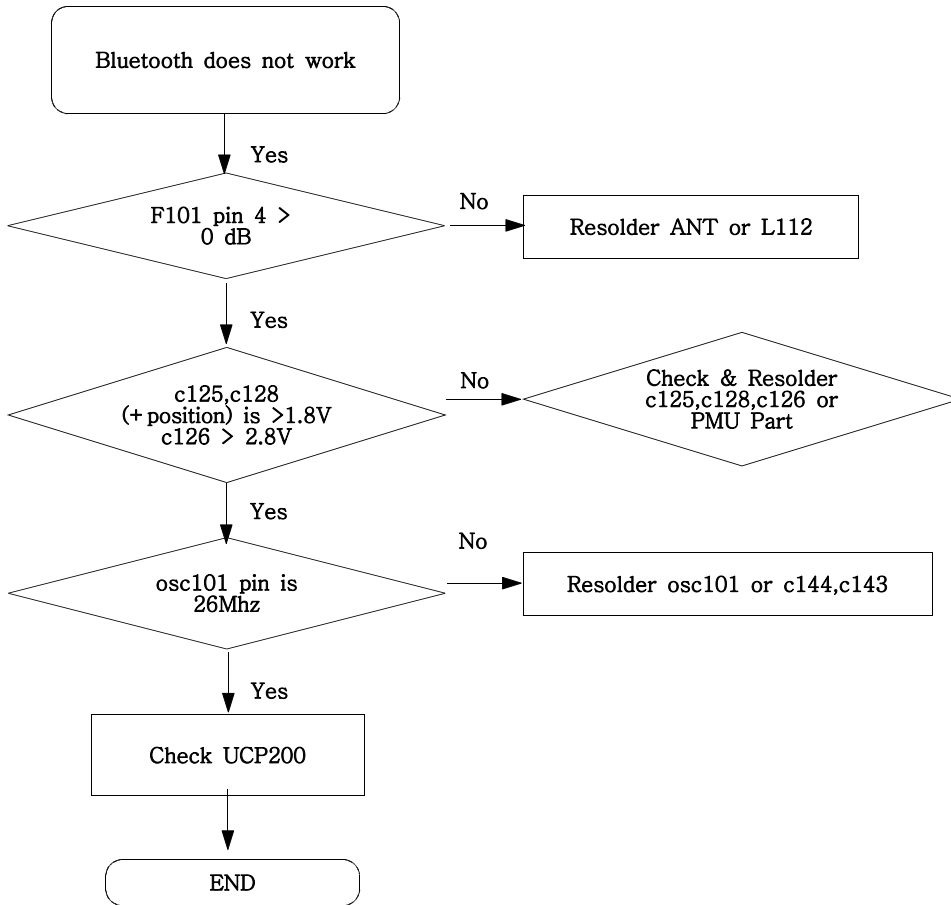


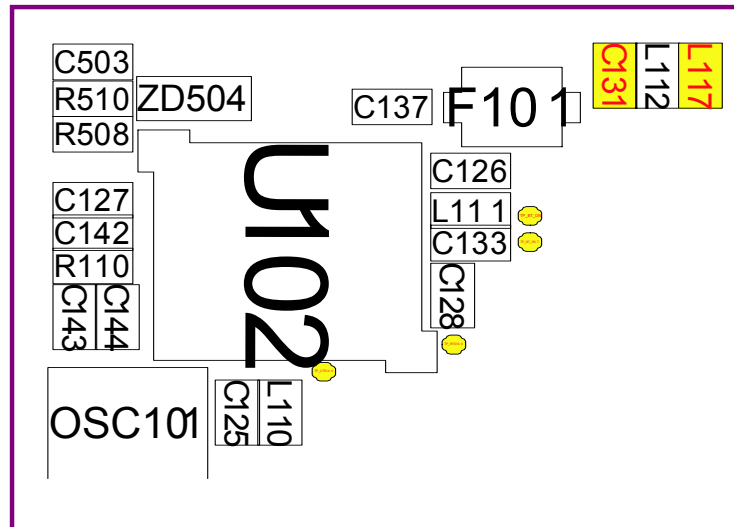
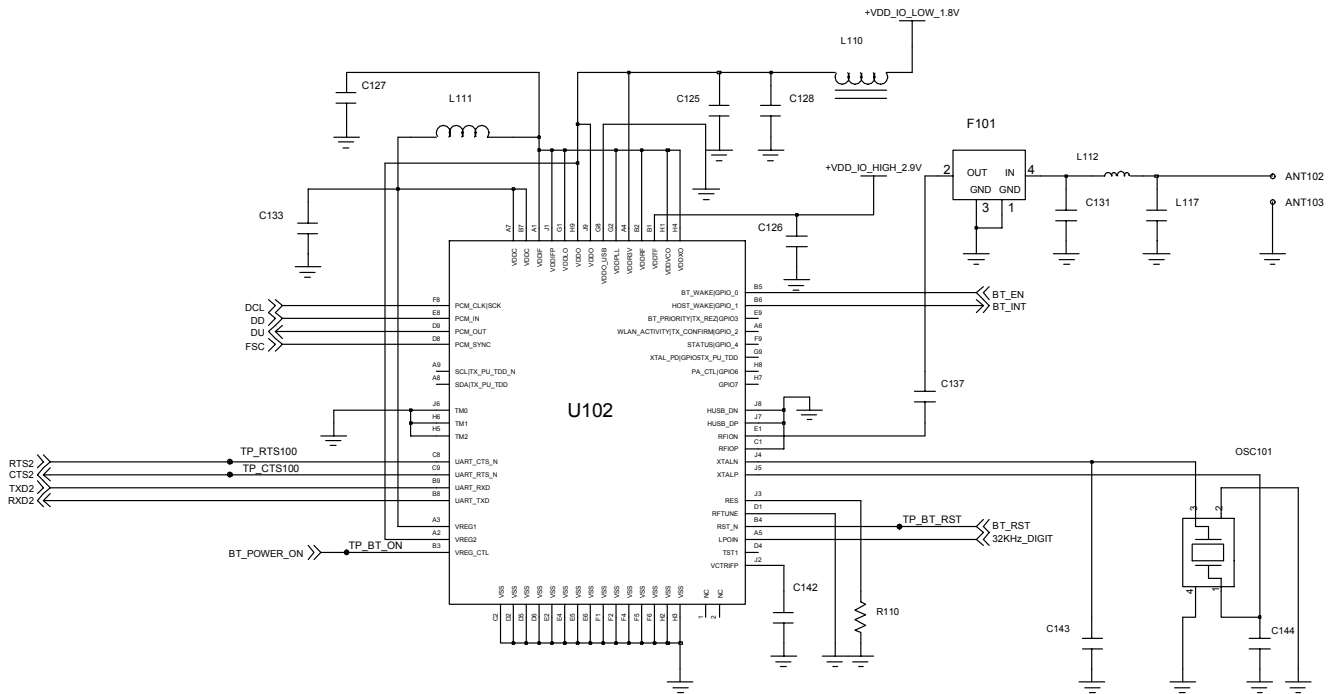
9-16. PCS Transmitter





9-17. Bluetooth part





9-18. Radio part

