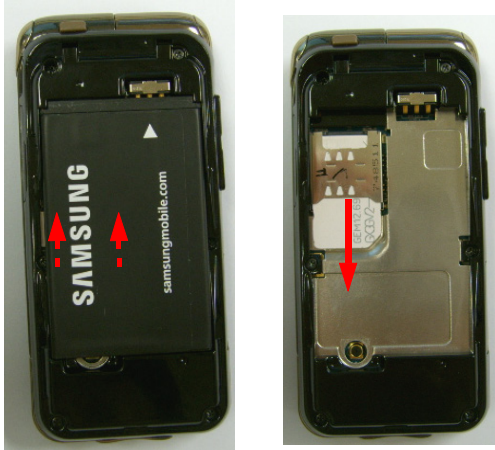


11. Disassembly and Assembly Instructions

11-1. Disassembly Instructions

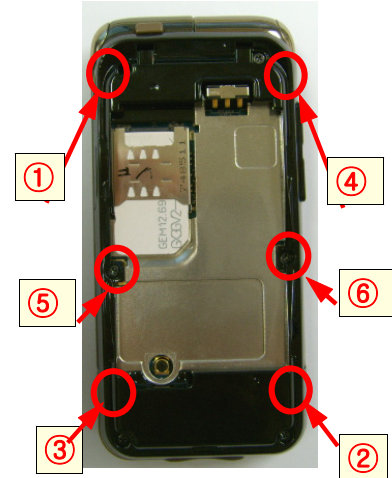
1



1) Remove a battery and remove SI CARD and SD CARD.

1) Remove the Battery and SIM card.

2



1) Remove all screws and remove a REAR.

1) Be careful not to scratch the surface of the handset.

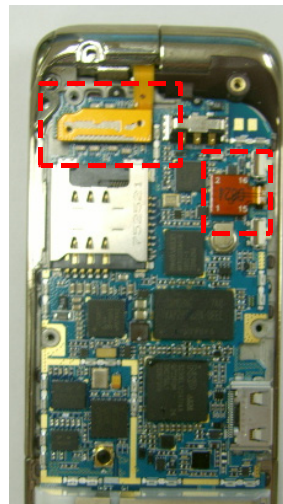
3



1) Remove the shieldcan.

1) Be careful not to break the PBA.

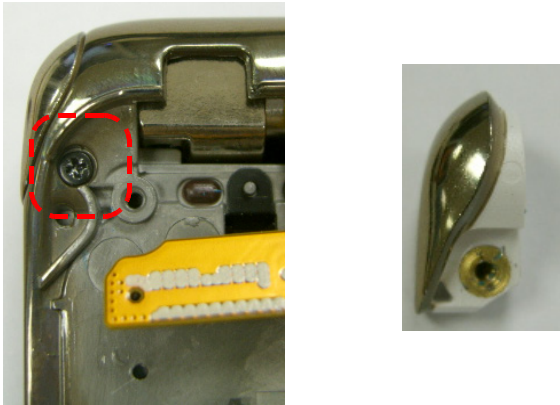
4



1) Disconnet two connectors.
2) Seperate the PBA.

1) Be careful not to harm to the PBA and FPCB.

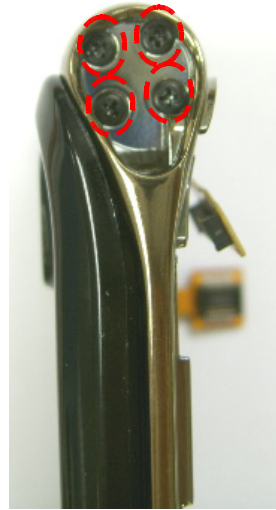
5



- 1) Remove SCREW.
- 2) Take the hinge dummy out .

1) When using the screwdriver, don't break the frame.

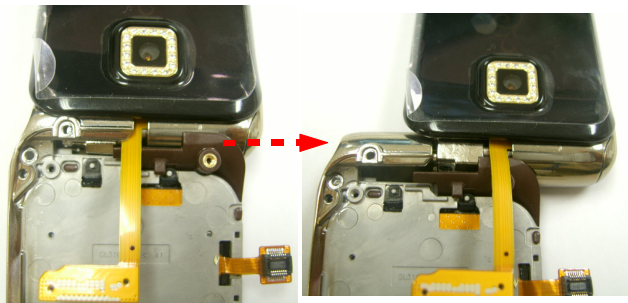
6



- 1) Remove 4 Screws.

1) When using the screwdriver, don't break the frame.

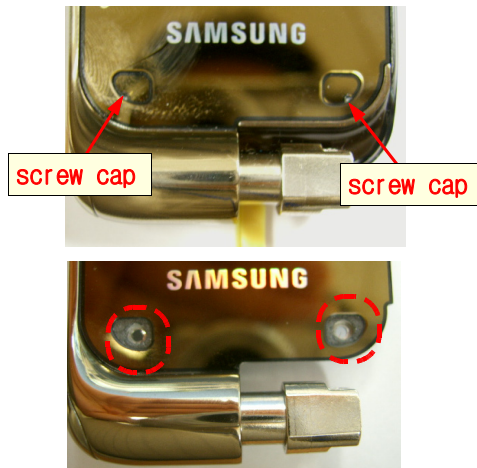
7



- 1) Open the folder .
- 2) Open the folder and push to the right side and pull out the hinge.

1) Be careful not to change the shape of hinge


8



- 1) Remove 2 screw caps.
- 2) Remove 2 screws.

1) When remove SCREW CAP, be careful not to scratch the surface.

9

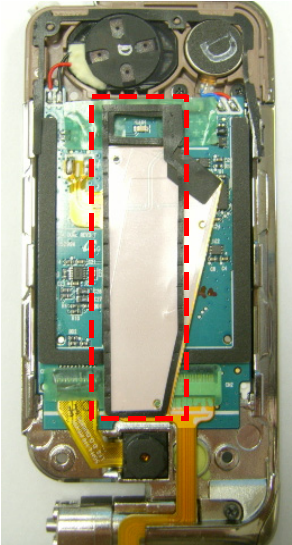


separation direction

1) Separate the folder from right side to left side.

1) When using the separation jig, be careful not to damage the HOOK and structure.

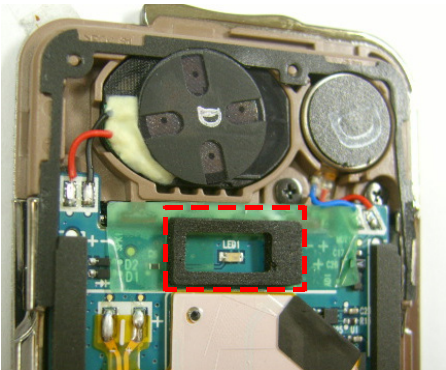
10



1) Remove the sponge on the lighting sheet.

1) When removing the sponge, be careful not to break the sponge.

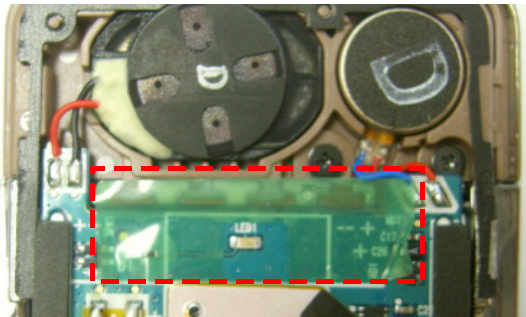
11



1) Remove LED sponge.

1) When removing the sponge, be careful not to break the sponge.

12

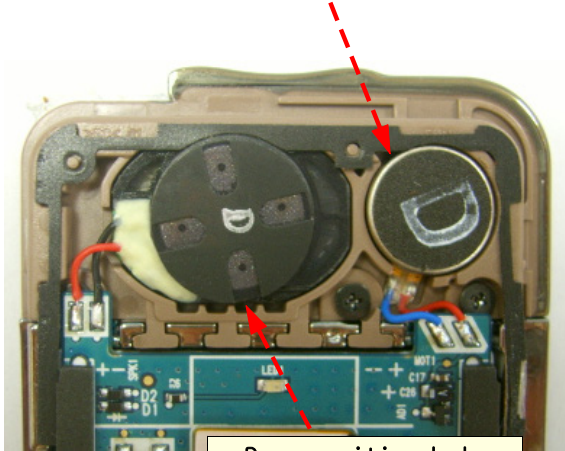


1) Remove insulating tape.

1) When removing the tape, be careful not to tear the tape.

13

Decomposition hole

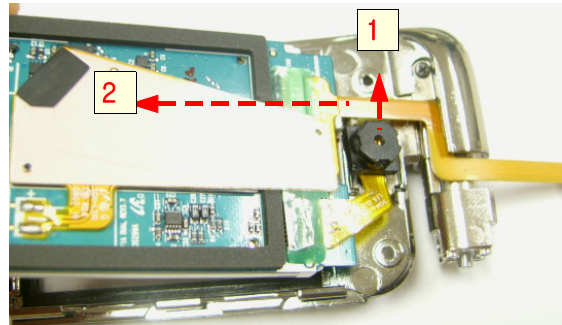


Decomposition hole

1) Separate the SPK and Motor

1) When removing the SPK and Motor, be careful not to break the solder pad.

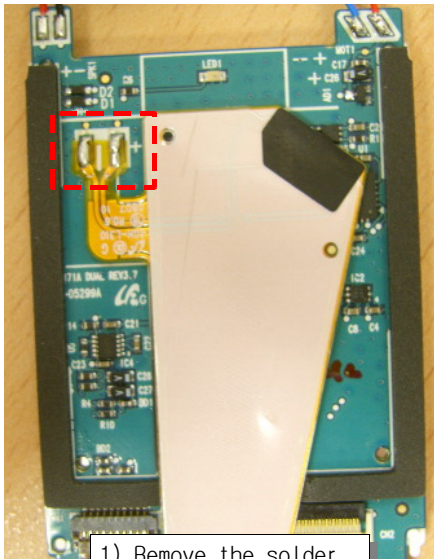
14



1) Lift up the camera.
2) Separate the LCD to No.2 direction.

1) Be careful not to tear the Camera FPCB.
2) When lifting up the CAMERA, be careful not to break the camera sensor.
3) Be careful not to tear the MAIN FPCB.

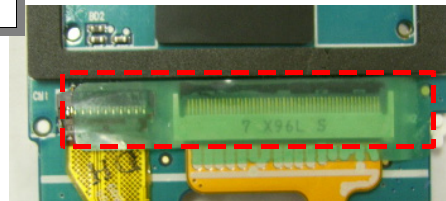
15



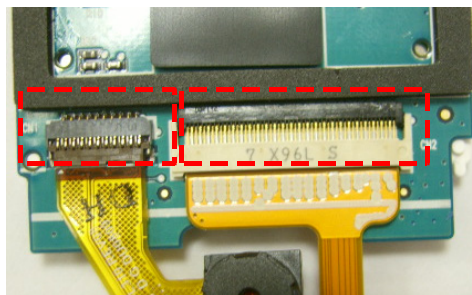
1) Remove the solder.

1) Be careful not to break the solder pad.

16



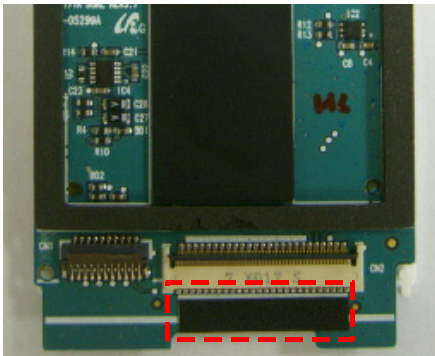
1) Remove the insulating tape.



2) Lift up the actuator and remove the camera, Main FPCB.

1) When removing the tape, be careful not to tear the tape.
2) Be careful not to tear the FPCB.

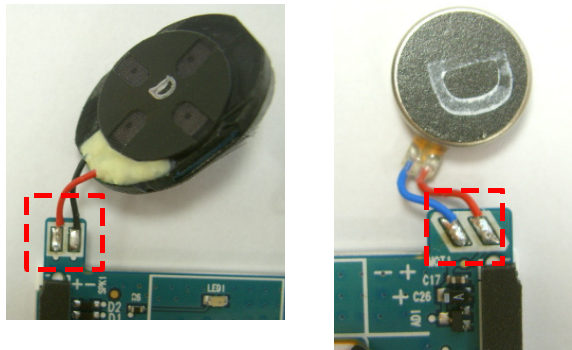
17



1) Remove double-faced TAPE of MAIN FPCB

1) Be careful not to tear the TAPE.

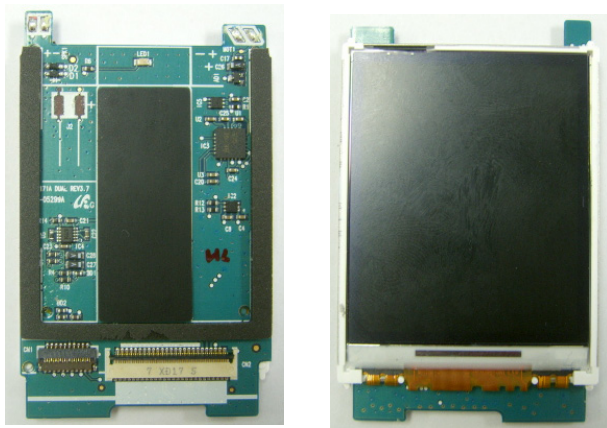
18



1) First, remove the glue, and remove MOT and SPK with soldering iron

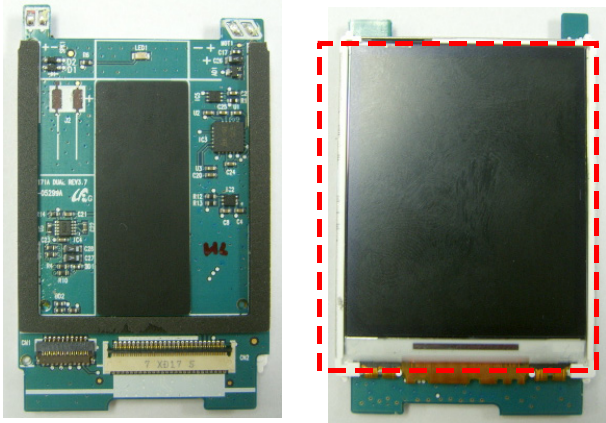
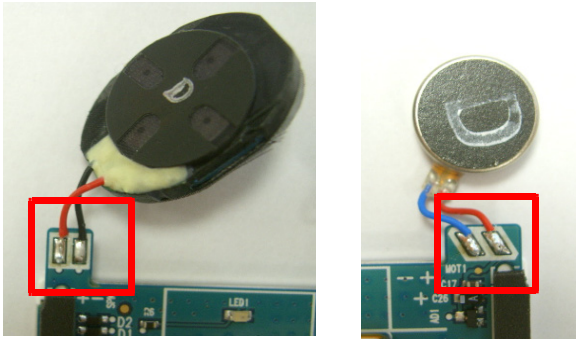
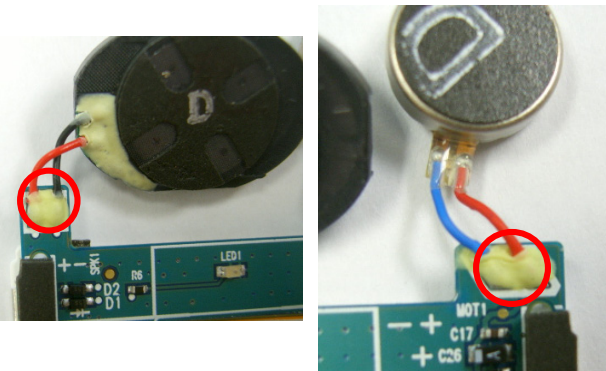
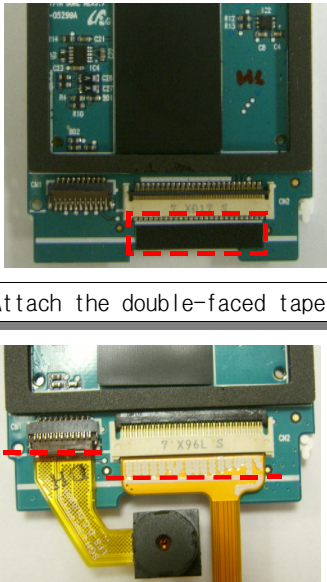
1) Be careful not to break the solder pad.

19

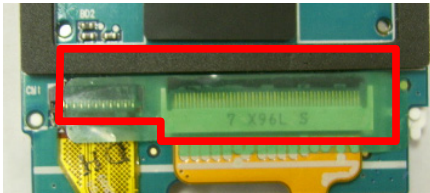


1) Be careful not to soil the LCD surface with dust or fingerprint.

11-2. Assembly Instructions

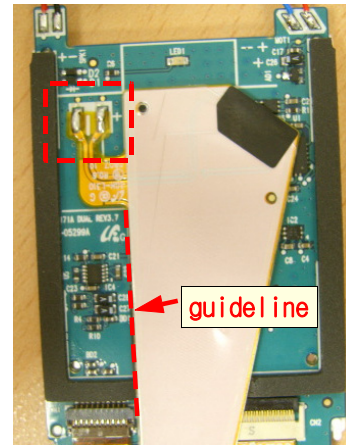
| | |
|--|--|
| <p>1</p>  <p>1) Check the LCD unit. (dust or fingerprint)</p> | <p>2</p>  <p>1) Solder SPK and MOT.</p> |
| <p>1) Be careful not to break the LCD.</p> | <p>1) When soldering, pay attention to the polarity.</p> |
| <p>3</p>  <p>1) Glue after soldering</p> | <p>4</p>  <p>1) Attach the double-faced tape</p> <p>2) Camera, MAIN FPCB connection.</p> |
| <p>1) Take care so that the glue may not fall outside PCB.</p> | <p>1) Insert the FPCB according to the guideline.</p> |

5



1) Attach the insulating tape

6

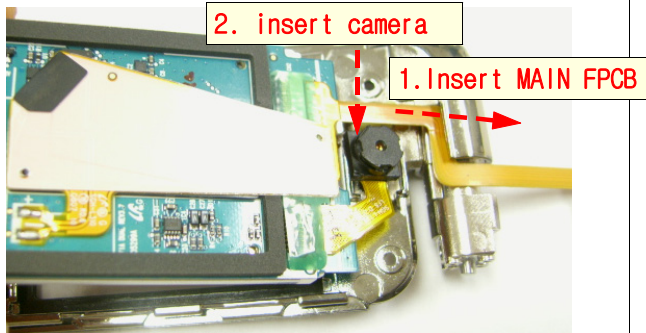


1) Attach the lighting sheet.
2) Solder on the pad.

1) Attach the tape to cover all connector.

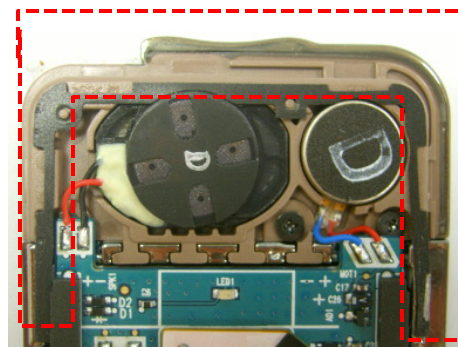
1) Attach the lighting sheet according to guideline.

7



1) Insert MAIN FPCB into UPPER slot.
2) Insert the camera.

8

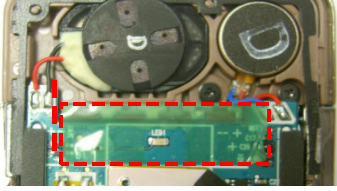


1) Insert the SPK/MOT.
2) Attach the sponge.

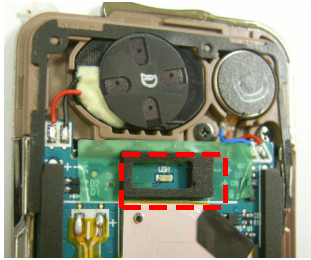
1) Be careful not to tear the FPCB.
2) Be careful not to soil the Camera Lens with dust or fingerprint.

1) When arranging the SPK/MOT WIRE, be careful not to break the solder.
2) Be careful not to spill the sponge out of the upper case.

9



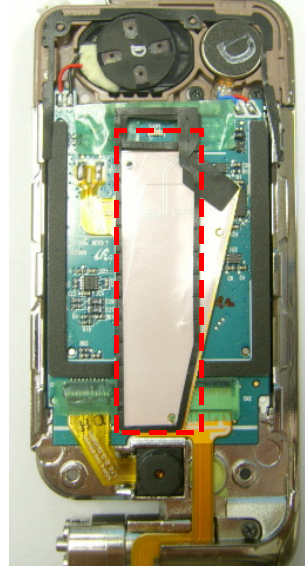
1) Attach the insulating tape.



2) Attach the sponge.

1) Be careful not to break the HOOK.

10



1) Attach the sponge

1) Fit the sponge on to the lighting sheet.

11

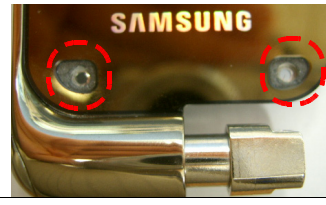


assembling direction

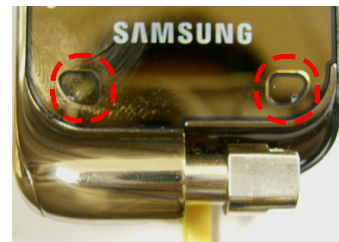
1) Assemble to arrow direction.

1) Assemble from the lower part to upper like arrow direction.

12



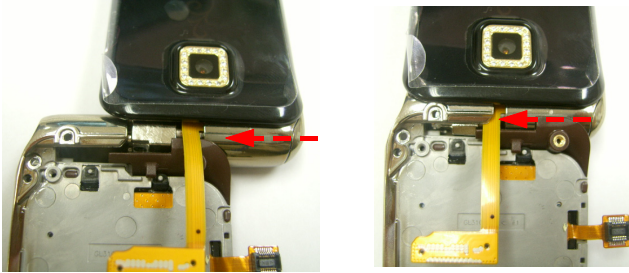
1) Tighten 2 SCREWS.



2) Attach the 2 SCREW CAPs.

1) Use the pressing jig to prevent the screw from loosening.

13



Insert the FPCB and FRONT into the hinge part.

1. Combine FOLDER for FRONT hinge.

1) Be careful not to tear the FPCB.

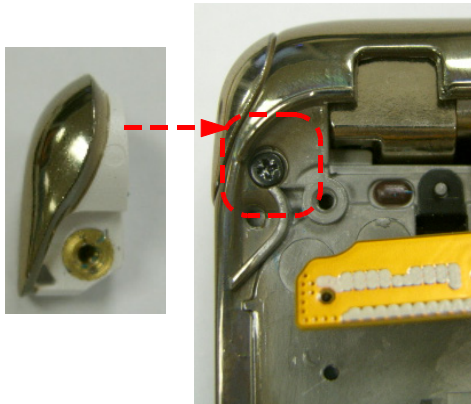
14



1) Tighten 4 SCREWS.

1) When using screwdriver, be careful not to break the screw hole.

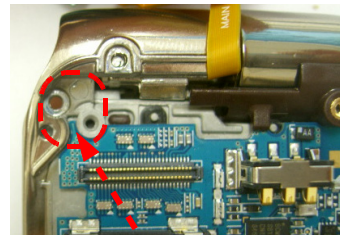
15



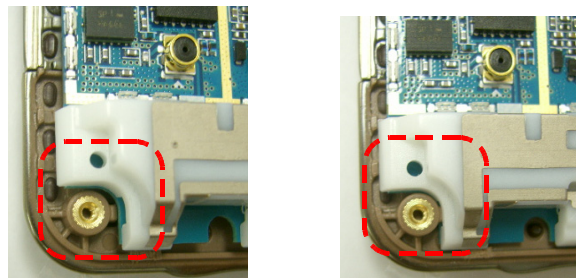
1) Insert the dummy.
2) Tighten the screw.

1) Assemble from the lower position.

16



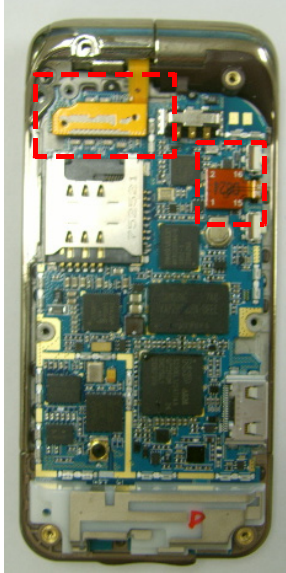
1) Insert MAIN B'D into FRONT's groove.



2) Push and insert MAIN B'D to left side HOOK .

1) When assembling the Main B'D, Be careful not to break the parts.

17



1) Assemble the 2 connectors.

1) Be careful not to tear the FPCB.

18



1) Assemble the shield can.

1) When assembling shield can, be careful not to break the MAIN B'D.

19



1) Assemble REAR from the top portion.

1) When assembling the REAR, be careful not to get damaged.

20



1) Tighten 6 SCREWS.

1) When using the screwdriver, be careful not to get damaged.