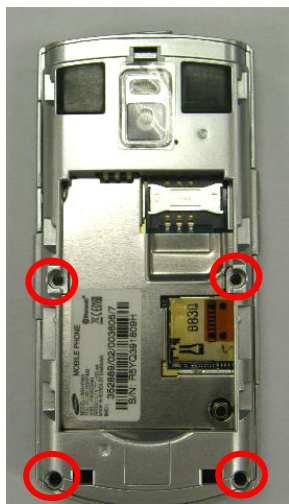


## 7. Disassembly and Assembly Instructions

### 7-1. Disassembly

1

- 1) RELEASE SCREWS AT 4 POINT.
- 2) DISASSEMBLE REAR CASE.



2

- 1) DISASSEMBLE CONNECTOR.
- 2) DISASSEMBLE MAIN PBA.

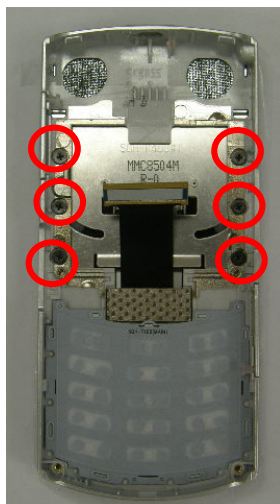


1) DO NOT MAKE SCRATCH ON CASE.

1) WHEN YOU DISASSEMBLE CONNECTOR, TAKE CARE NOT TO DAMAGE F-PCB.

3

- 1) RELEASE THE FIXED SCREW OF FRONT CASE. (6 POINT)
- 2) DISASSEMBLE KEY PAD.
- 3) DISASSEMBLE FRONT.



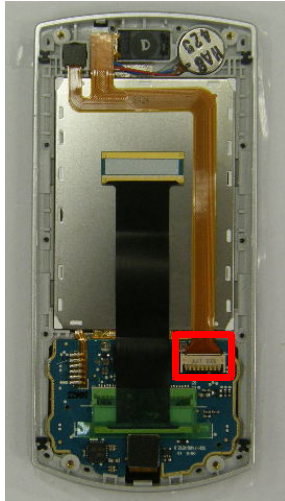
4

- 1) RELEASE SCREWS AT 4 POINT.
- 2) DISASSEMBLE LOWER CASE.



5

- 1) DISASSEMBLE SUB CAMERA F-PCB
- 2) DISASSEMBLE RECEIVER(1EA) AND MOTOR(1EA).



6

- 1) DISASSEMBLE WHEEL CONNECTOR
- 2) DETACH INSULATION TAPE.

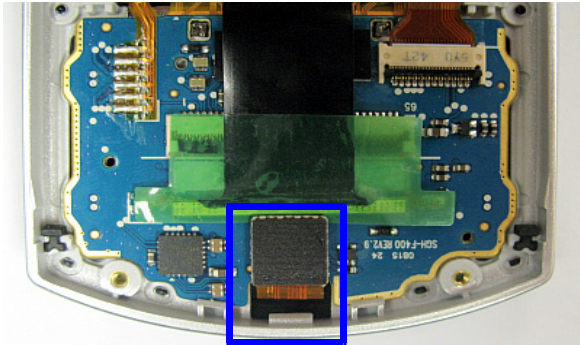


- 1) BE CAUTIOUS NOT TO DAMAGE TO COMPONENTS BY PINCETTE.

## 7-2. Assembly

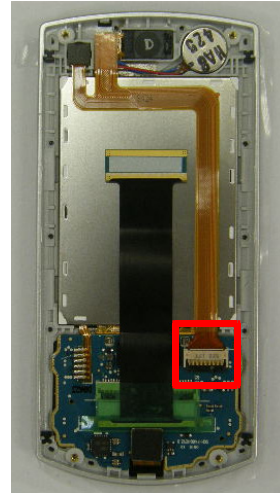
1

- 1) ATTACH INSULATION TAPE
- 2) ASSEMBLE WHEEL CONNECTOR



2

- 1) CONNECT CAMERA F-PCB.
- 2) INSERT RECEIVER(1EA), MOTOR, CKAMERA.



1) TAKE CARE NOT TO DAMAGE F-PCB.

- 1) THE CAMERA F-PCB MUST INSERT CORRECTLY INSIDE OF GUIDELINE.
- 2) TAKE CARE NOT TO TWIST ALL OF WIRES.

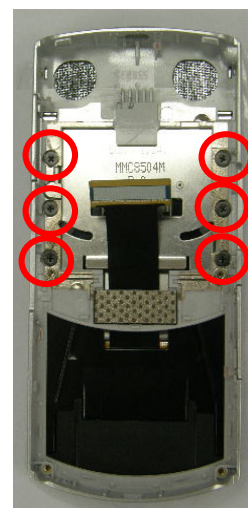
3

- 1) ASSEMBLE LOWER CASE AND SLIDE ASSY.
- 2) DRIVE SCREWS AT 4 POINT.



4

- 1) ASSEMBLE FRONT CASE.
- 2) DRIVE SCREWS AT 6 POINT.



1) TAKE CARE NOT TO DAMAGE F-PCB.

5

1) INSERT CORRECTLY KEY PAD.



6

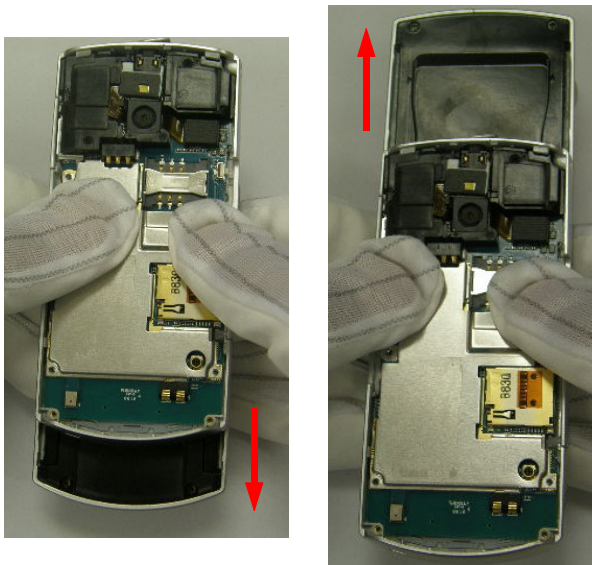
1) ASSEMBLE KEY CONNECTOR.  
2) ASSEMBLE MAIN PBA.



1) WHEN CONNECTOR IS ASSEMBLED, CHECK IT OUT THERE IS 'TICK' SOUND.

7

1) SLIDE DOWN AND UP ASS'Y SET.



1) NEED FOR F-PCB PROPERLY ACT.

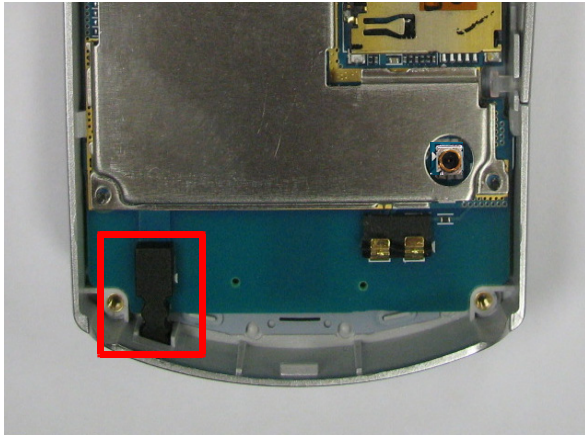
8

1) ASSEMBLE SIDE KEY CORRECTLY .



8

1) ASSEMBLE MIC RUBBER



1) WHEN MIC RUBBER IS ASSEMBLED, CHECK RUBBER IS INSERTED MIC HOLE OF REAR.

10

1) ASSEMBLE REAR CASE.  
2) DRIVE SCREWS AT 6 POINT.

