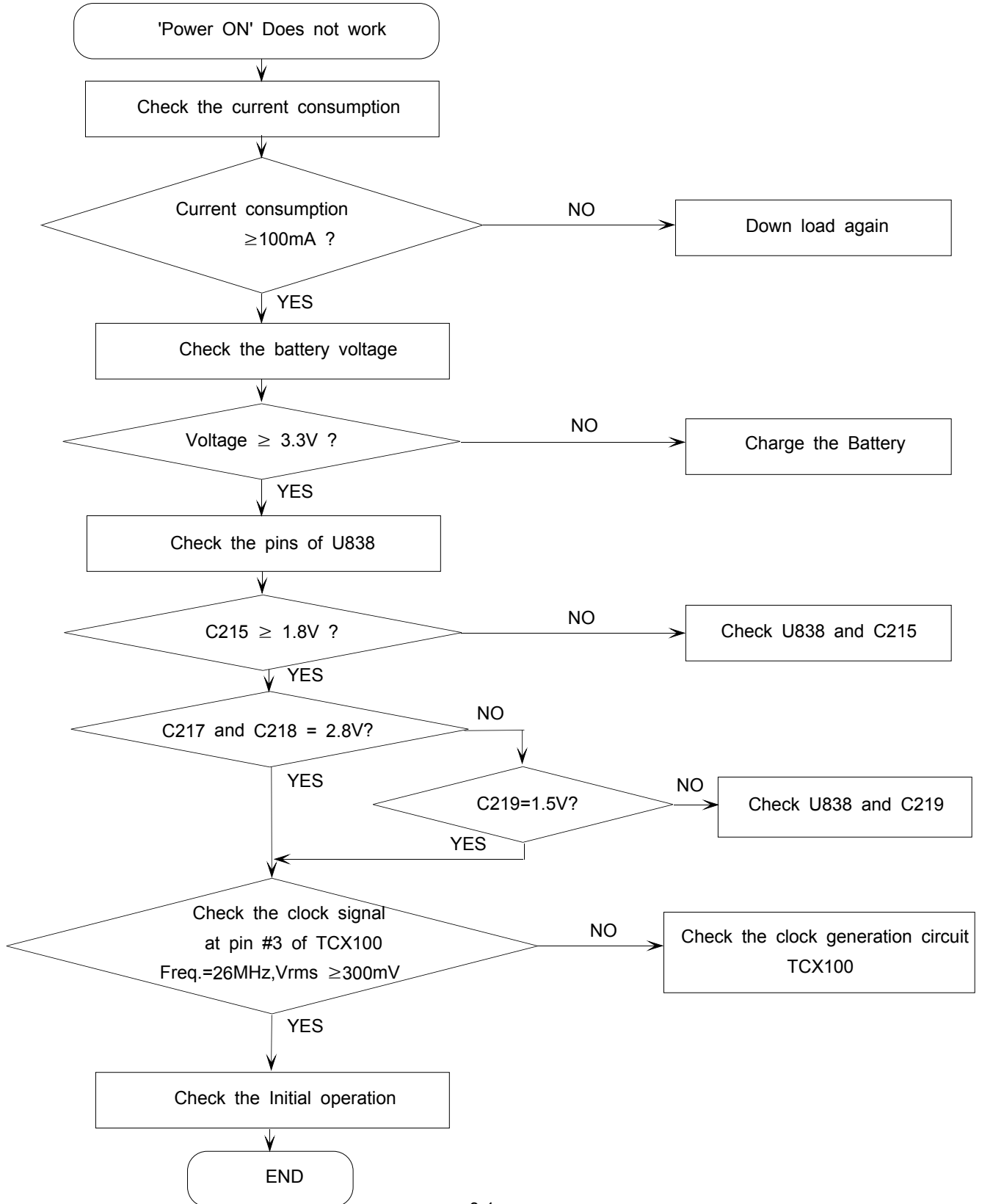


# 3. Flow Chart of Troubleshooting

## 3-1. Baseband

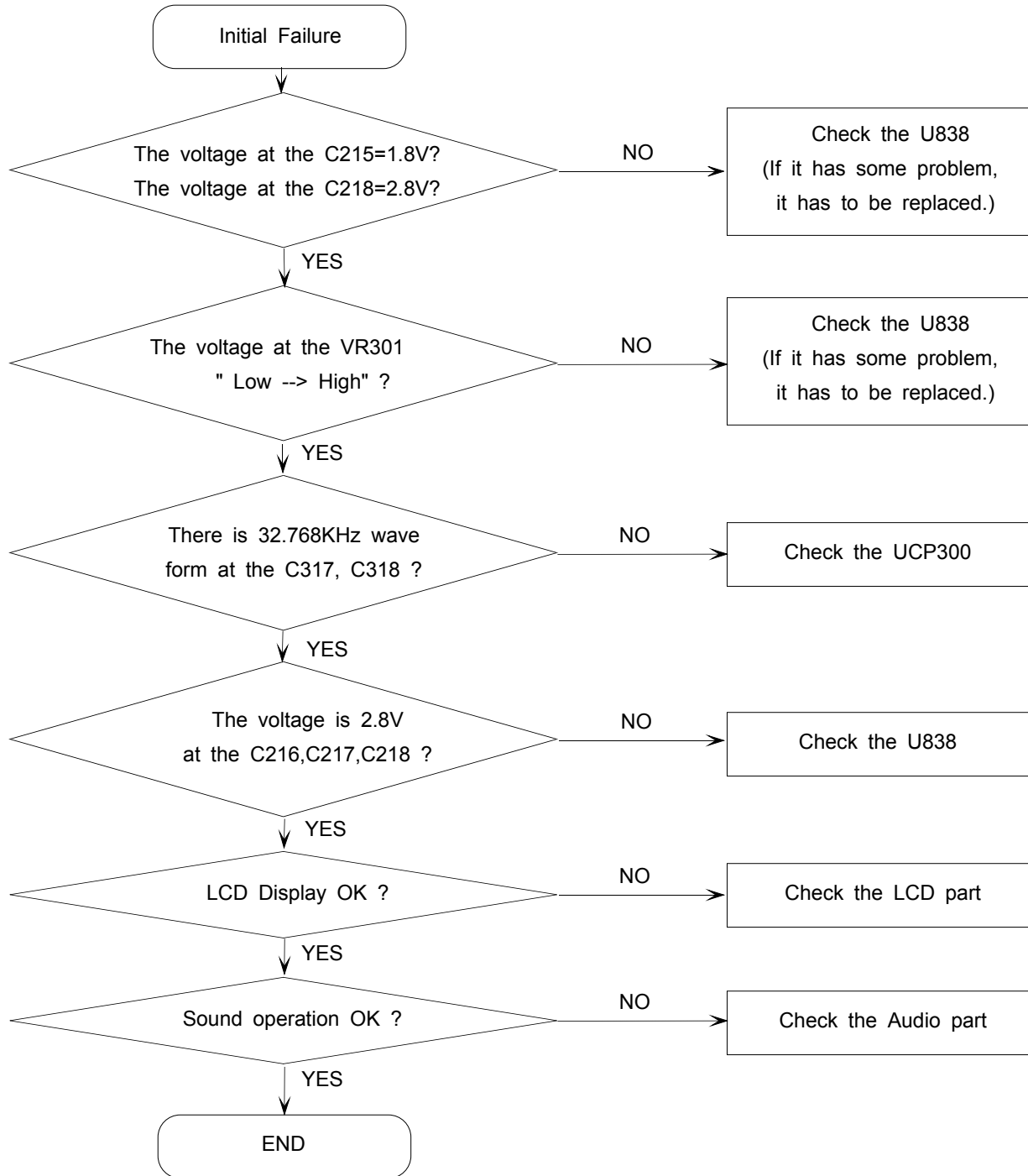
### 3-1-1. Power ON

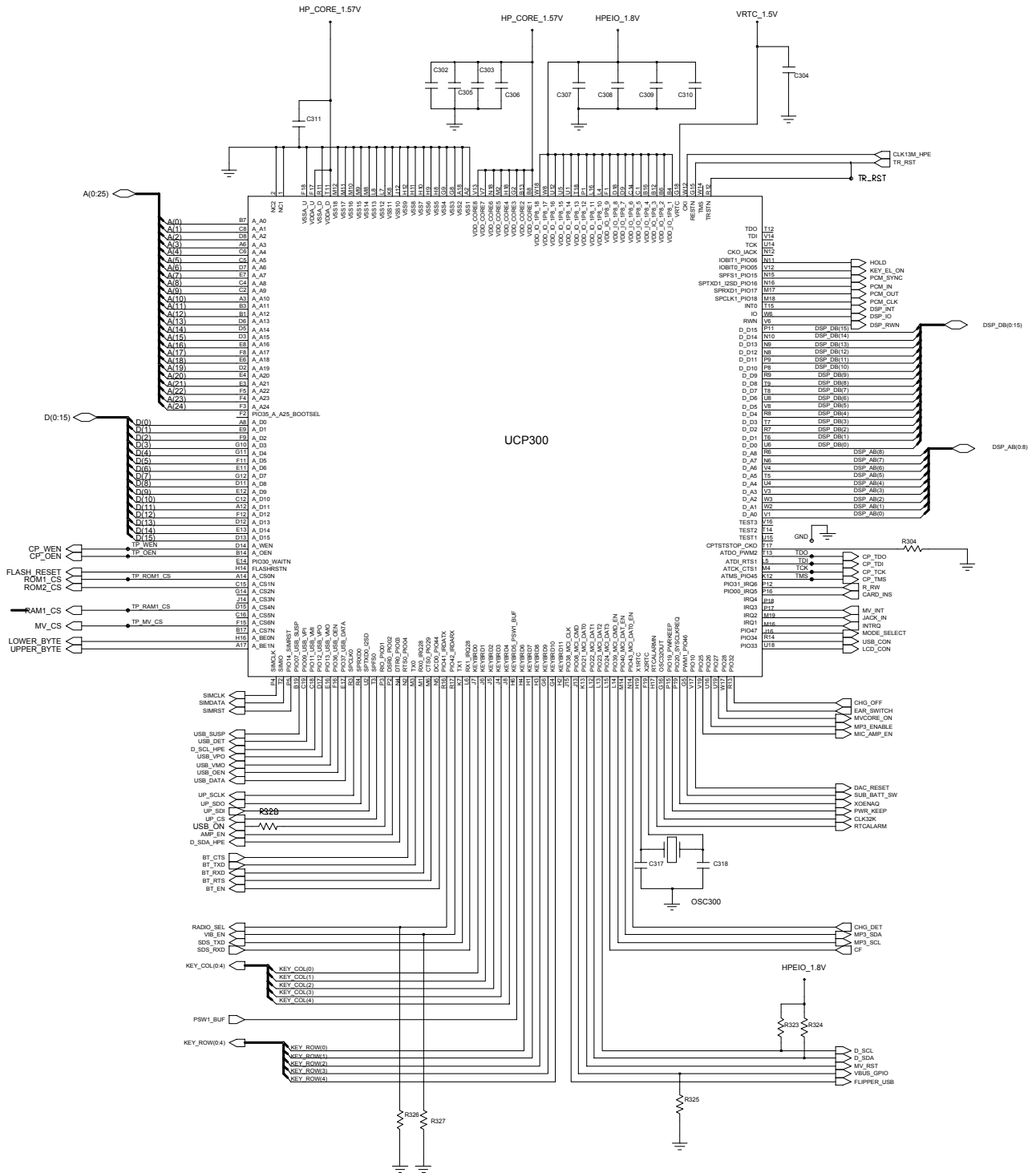


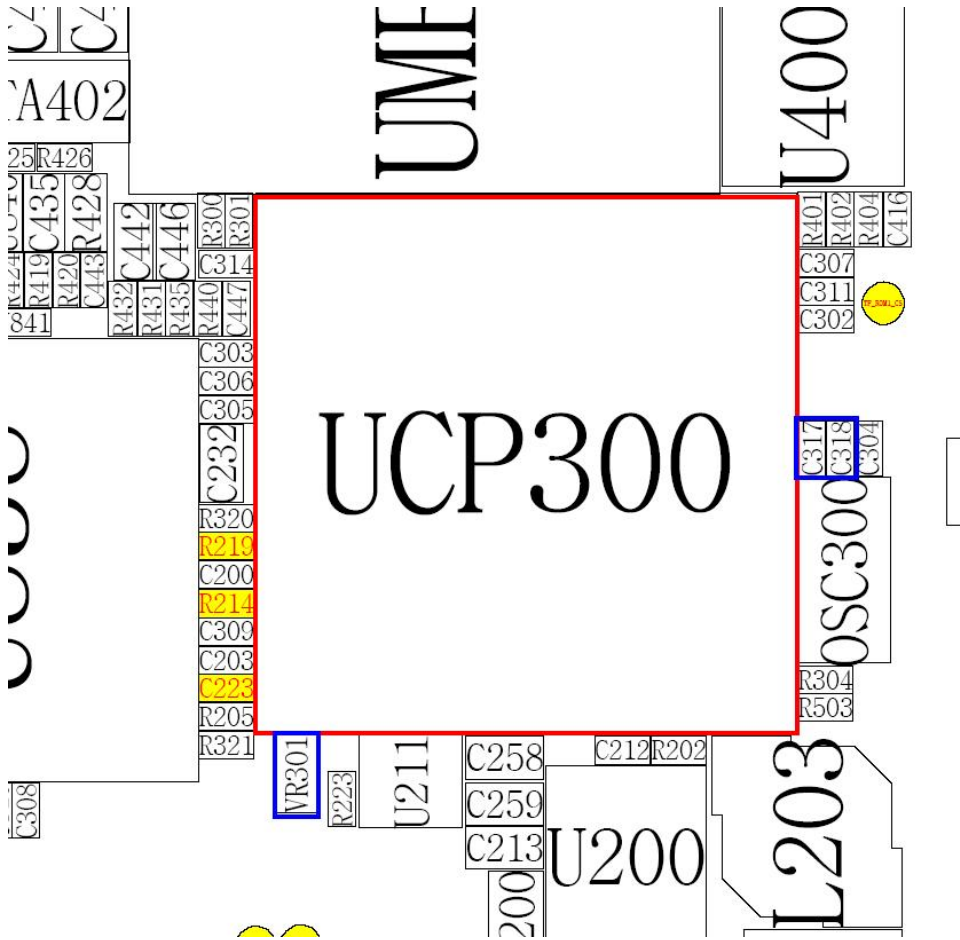


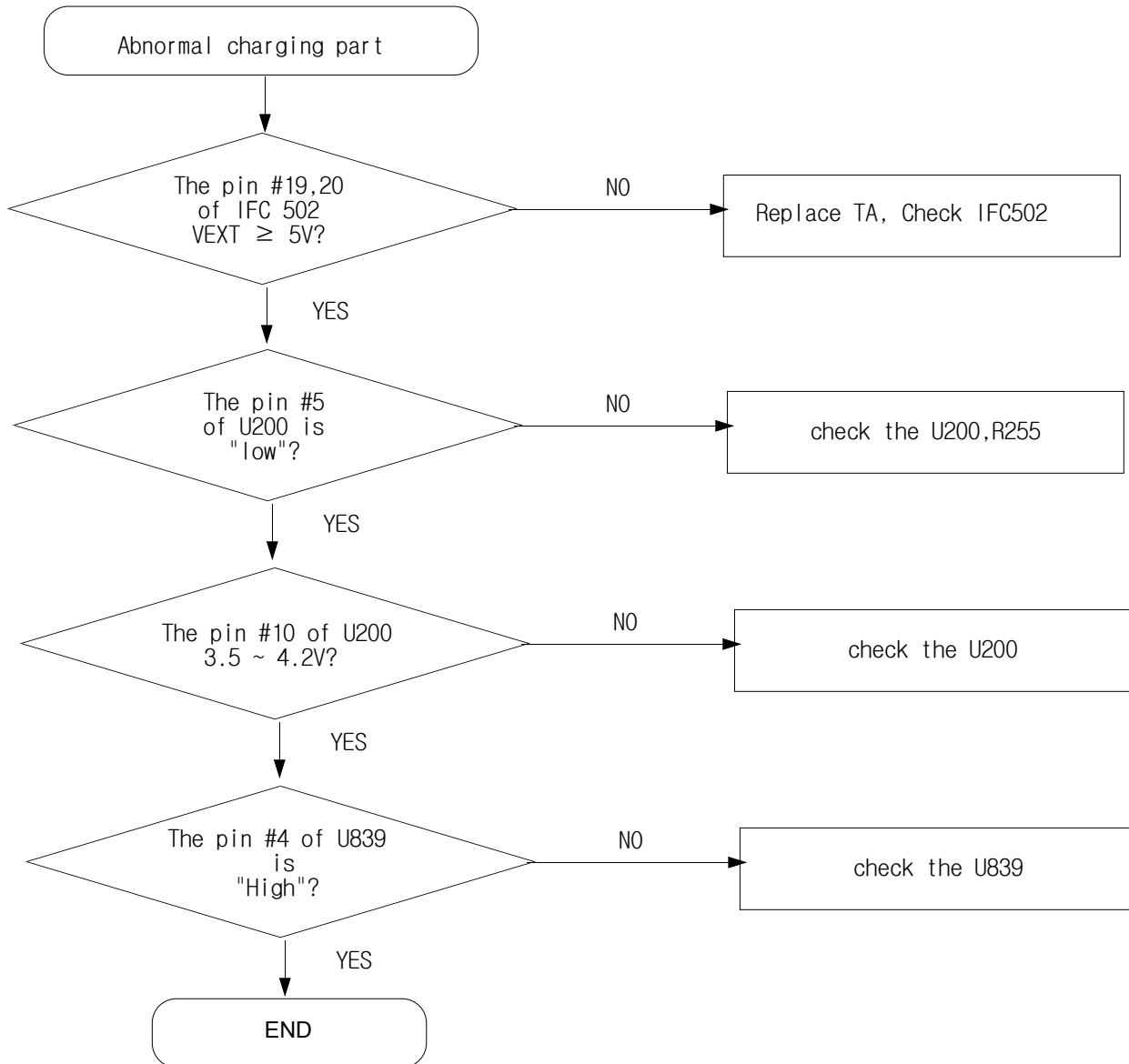


### 3-1-2. Initial

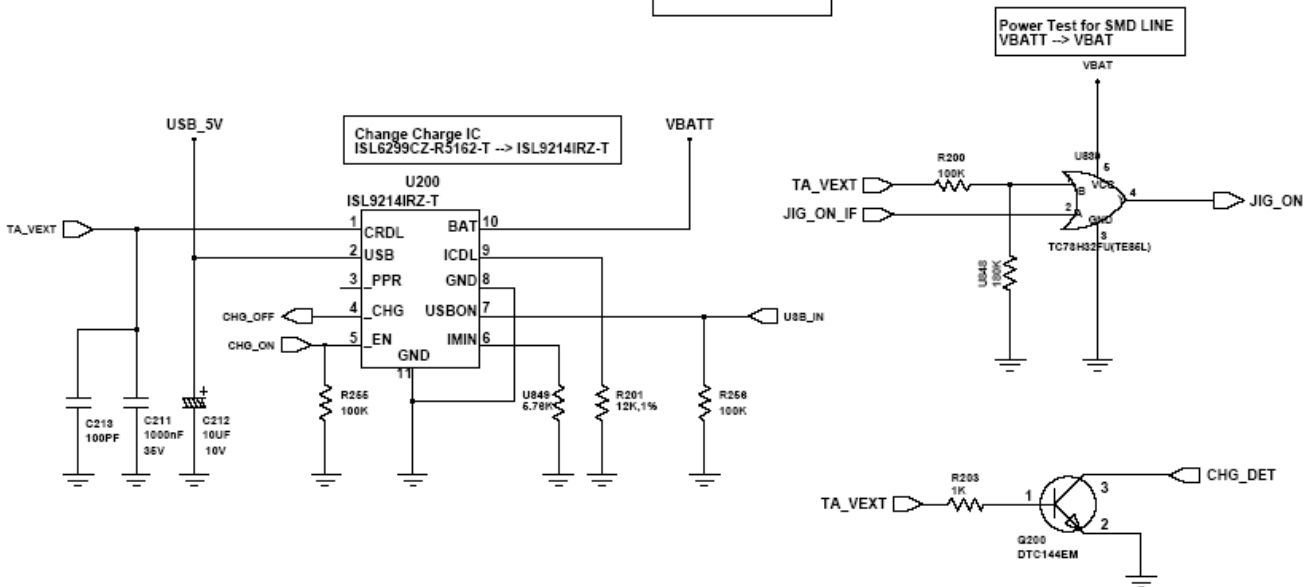




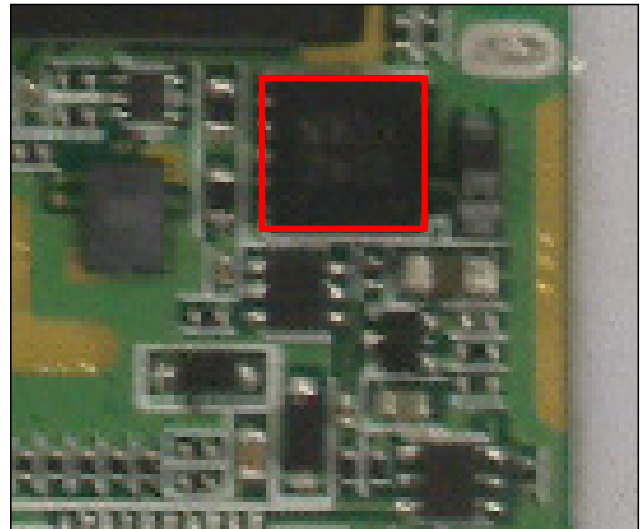
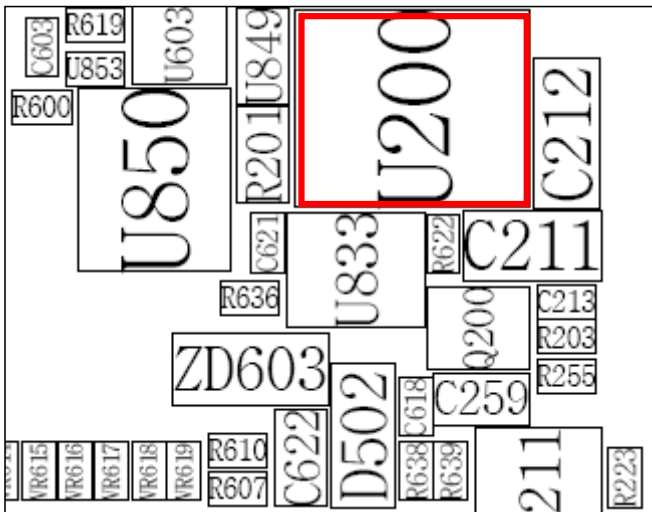


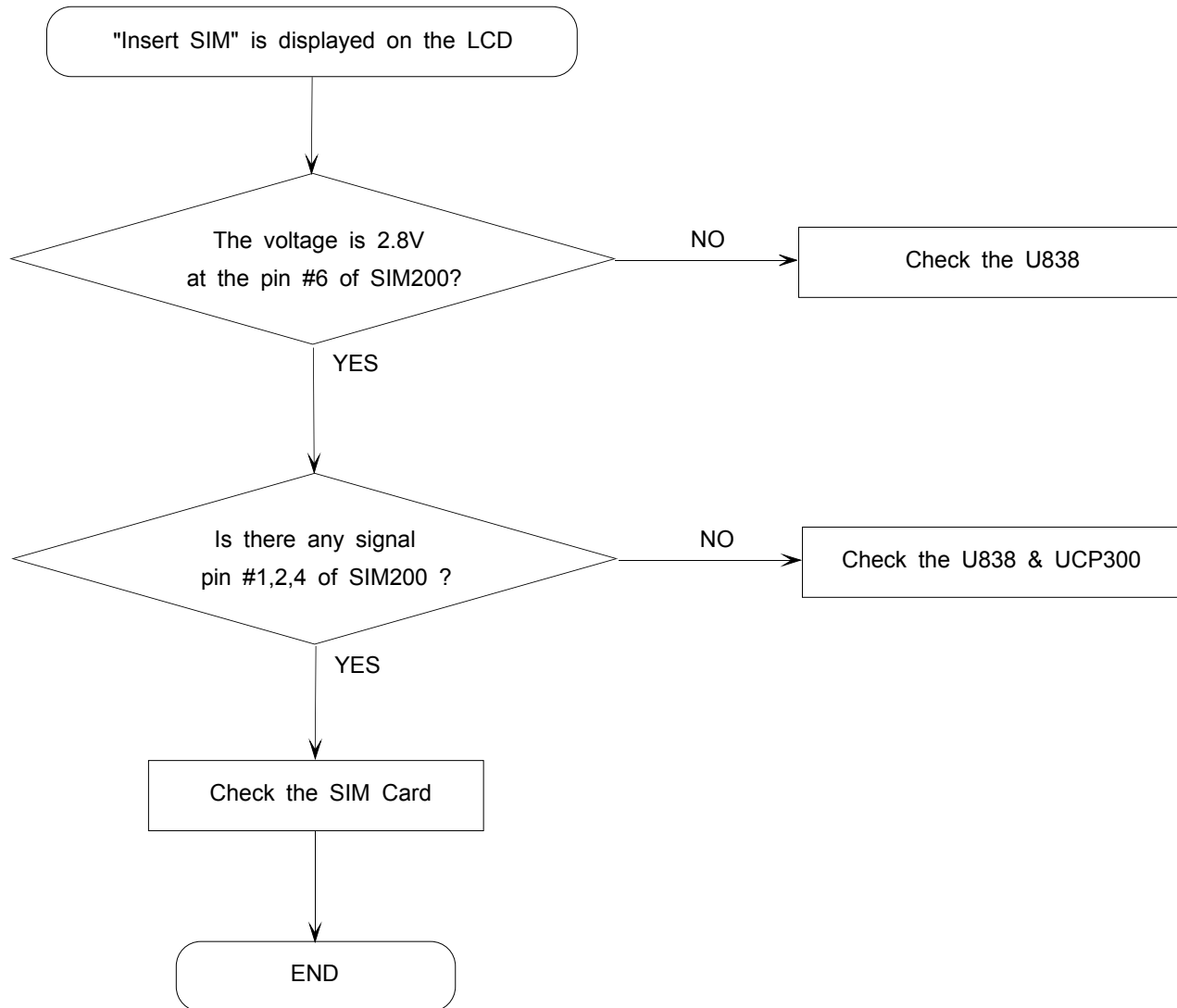
**3-1-3. Charging**

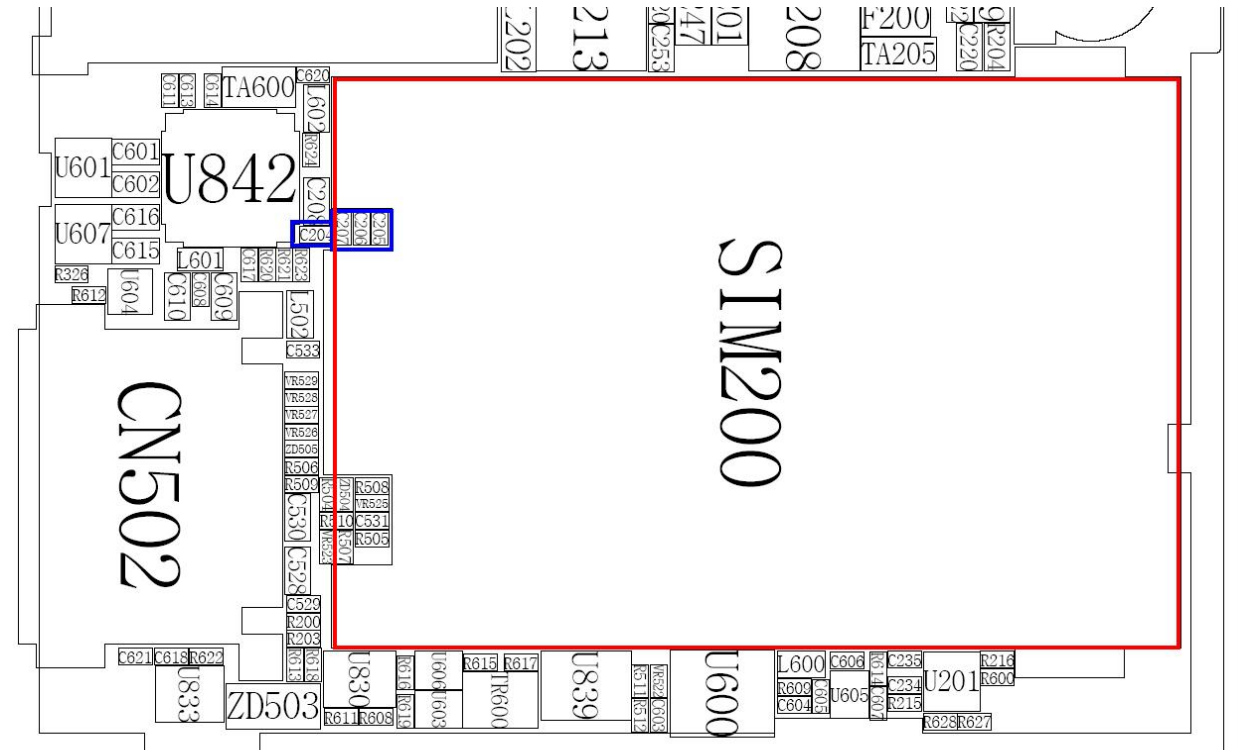
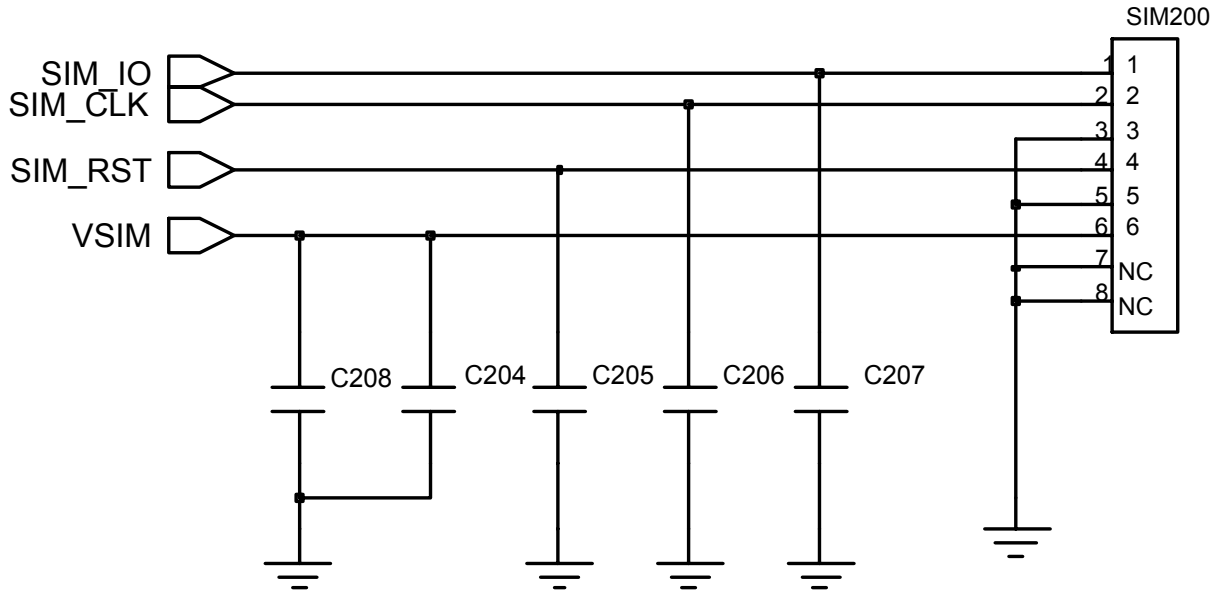
**CHARGER**



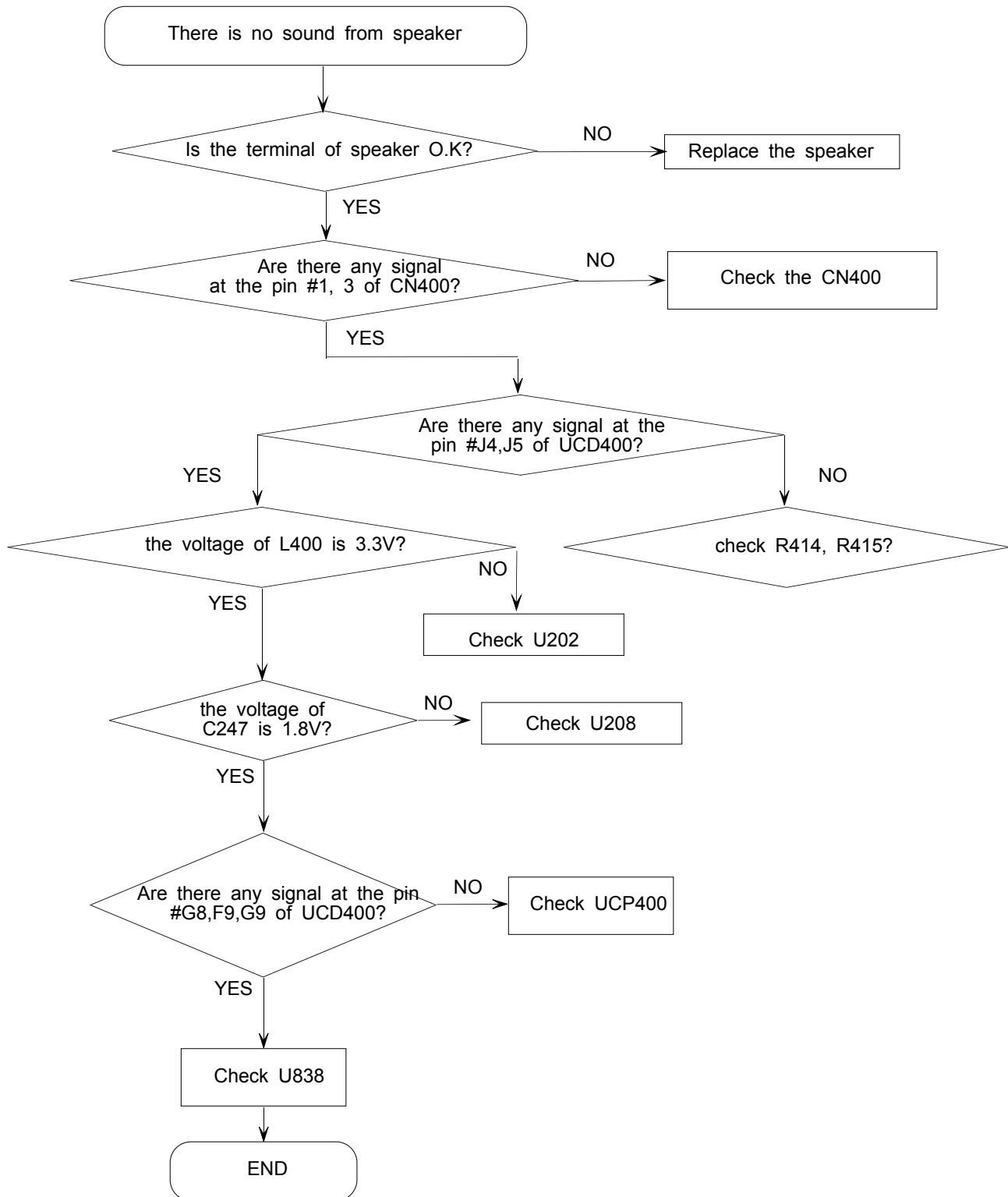




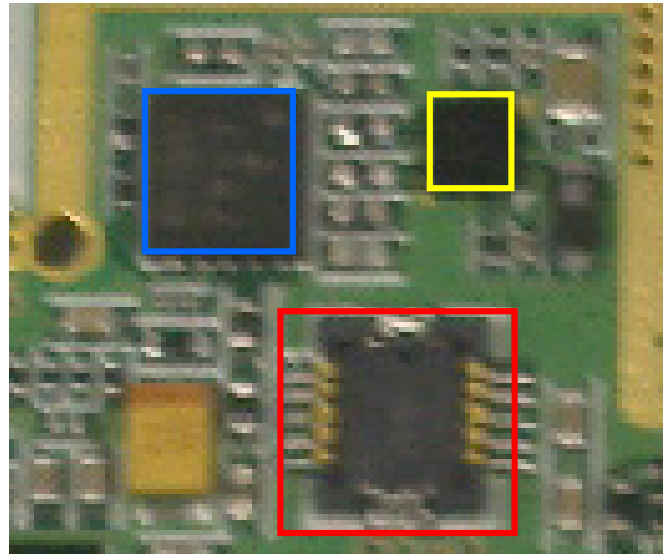
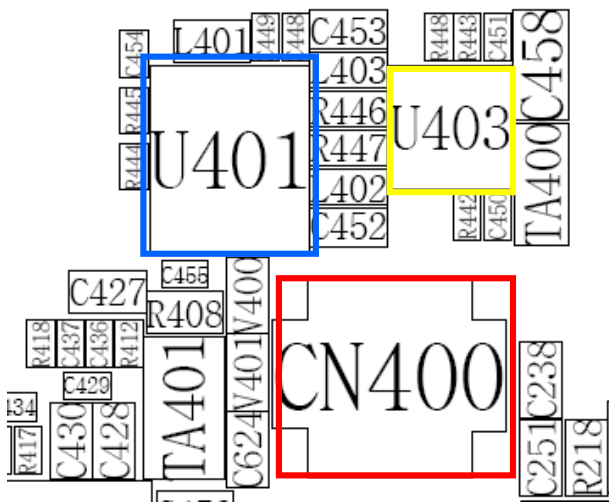
**3-1-4. Sim Part**



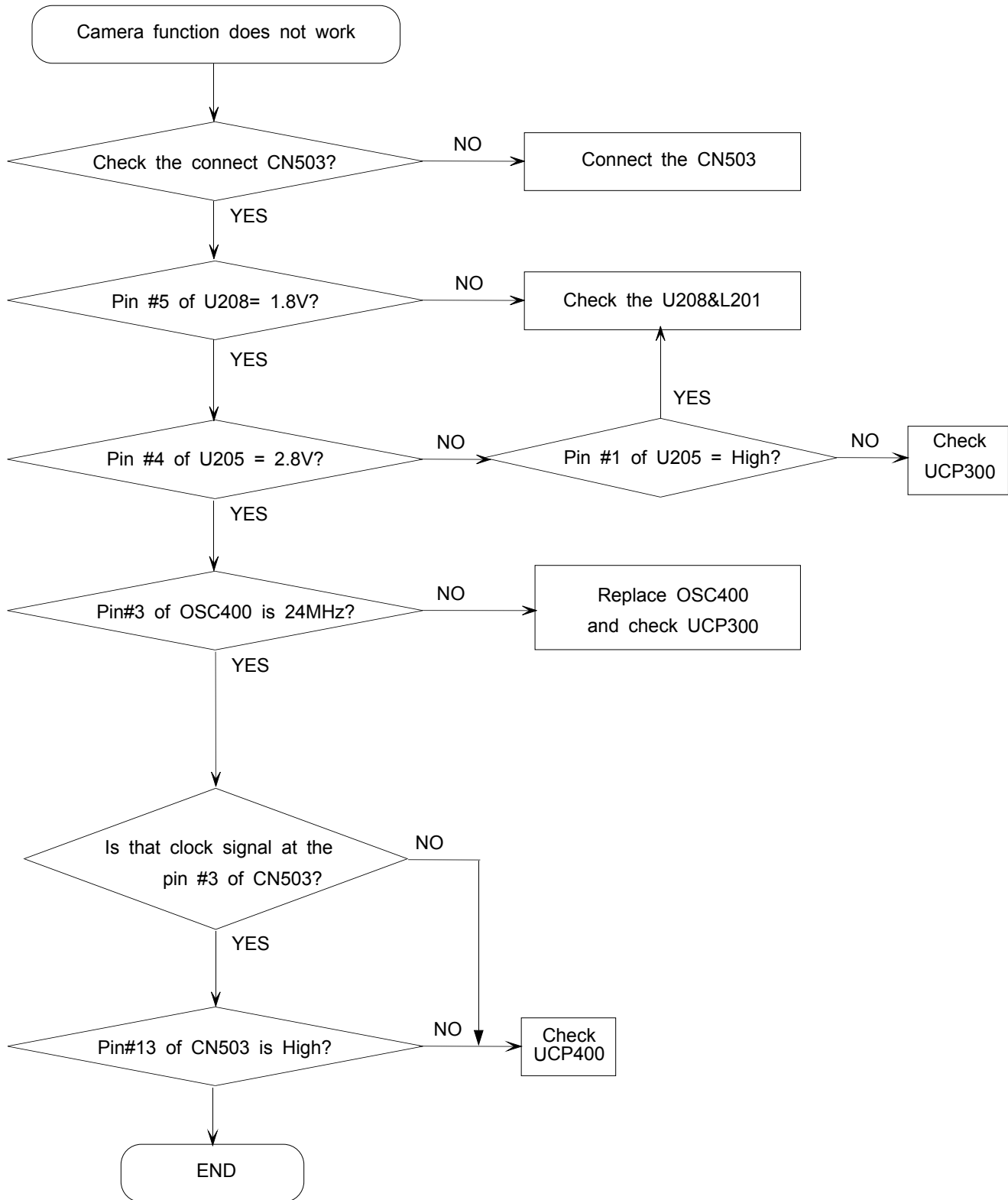
## 3-1-5. Speaker Part

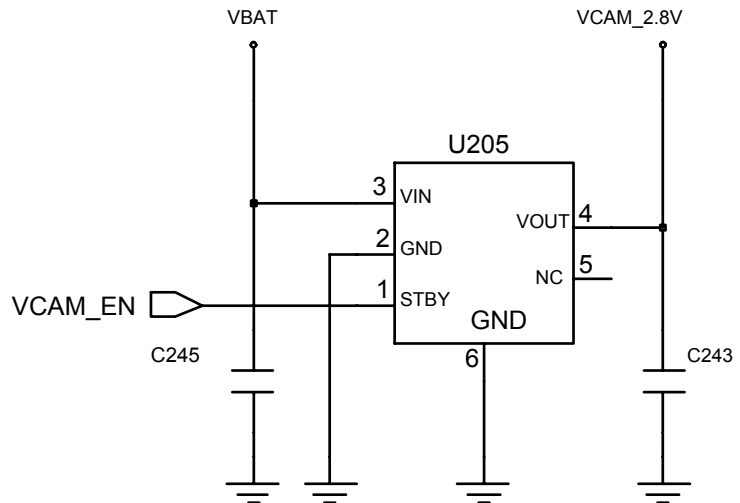
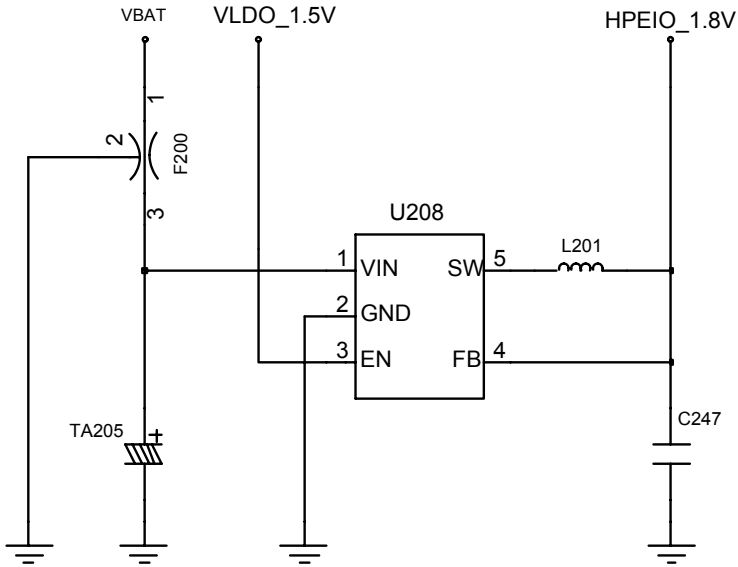
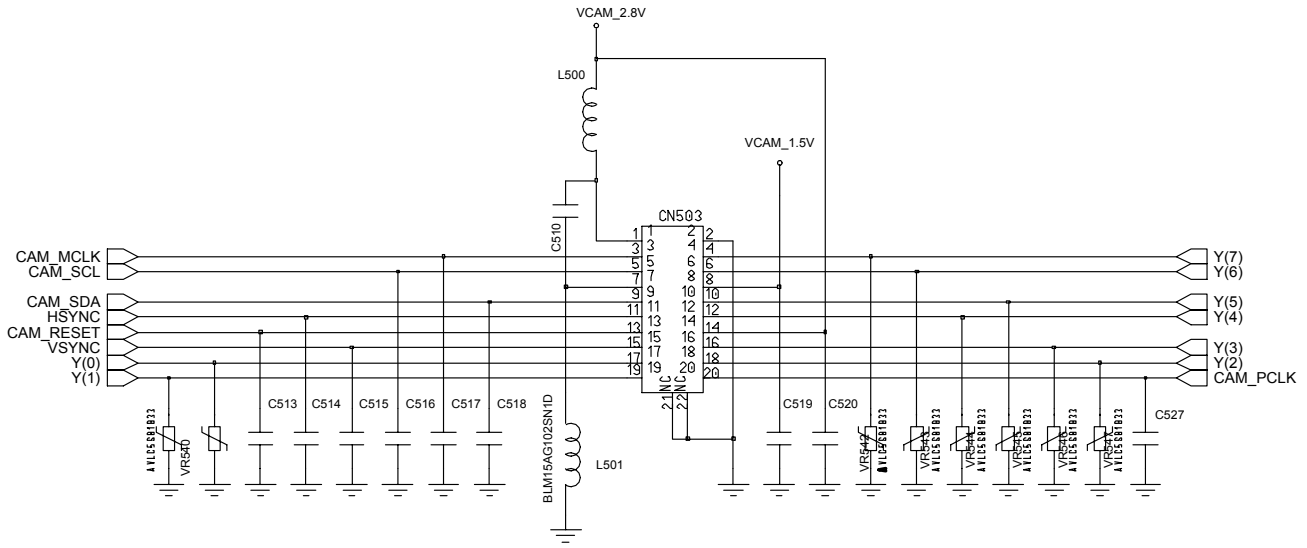




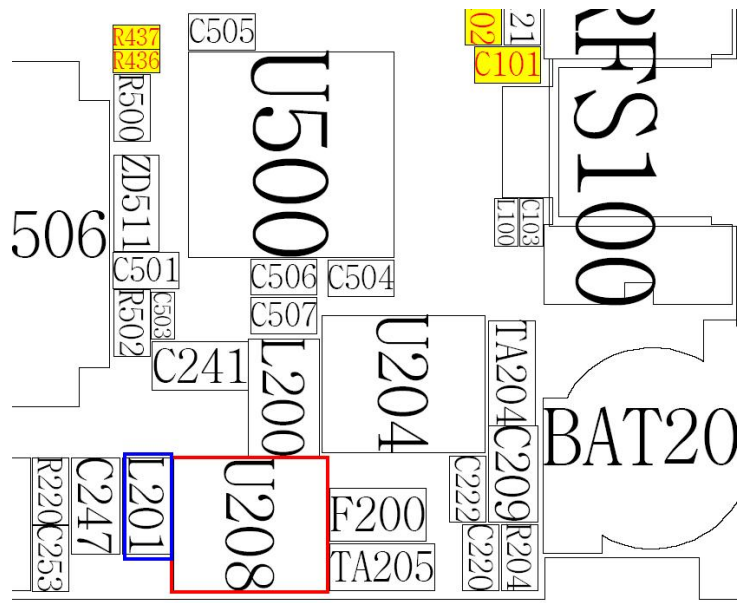
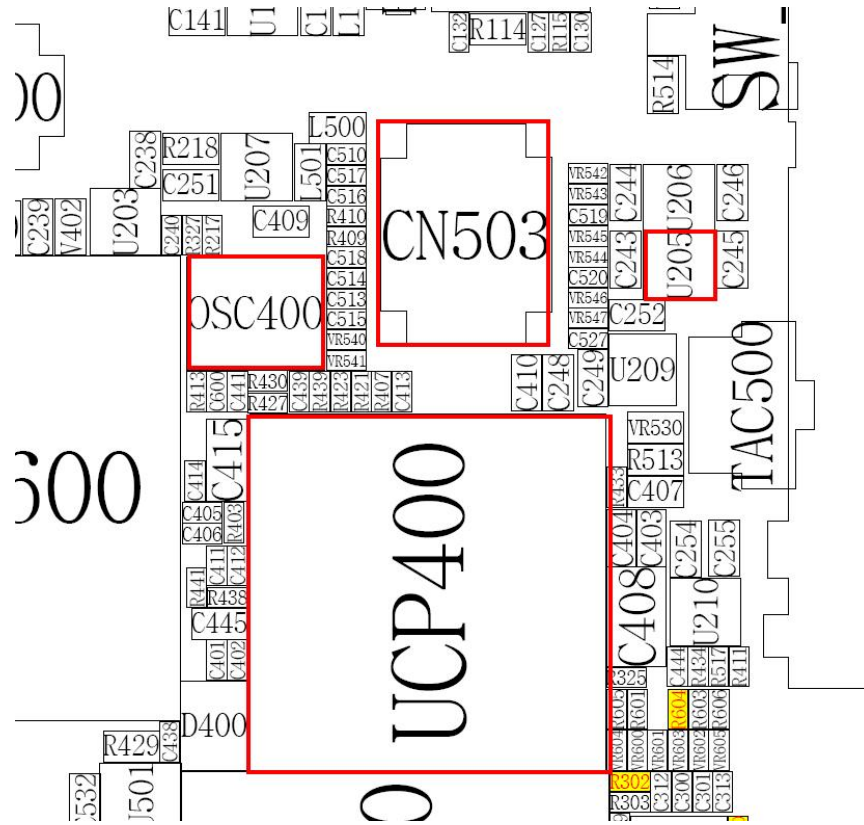


**3-1-6. Camera Part**

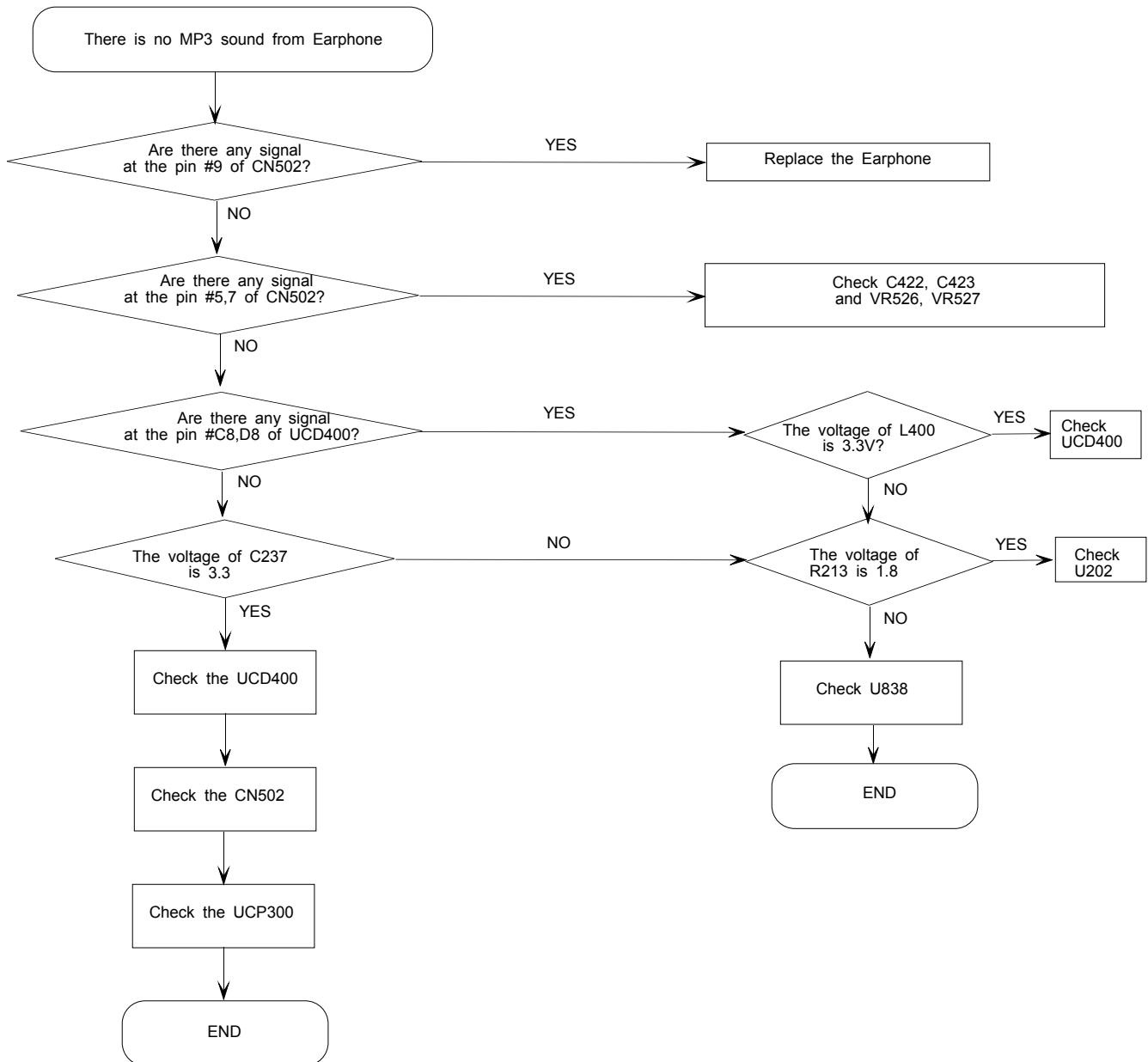


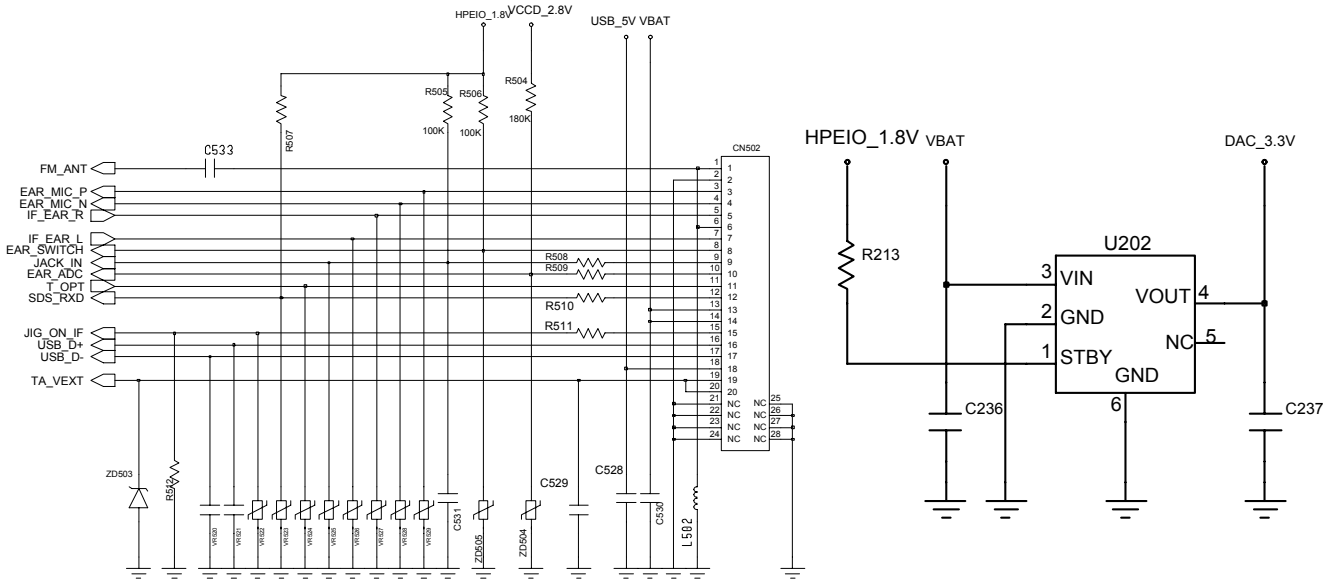
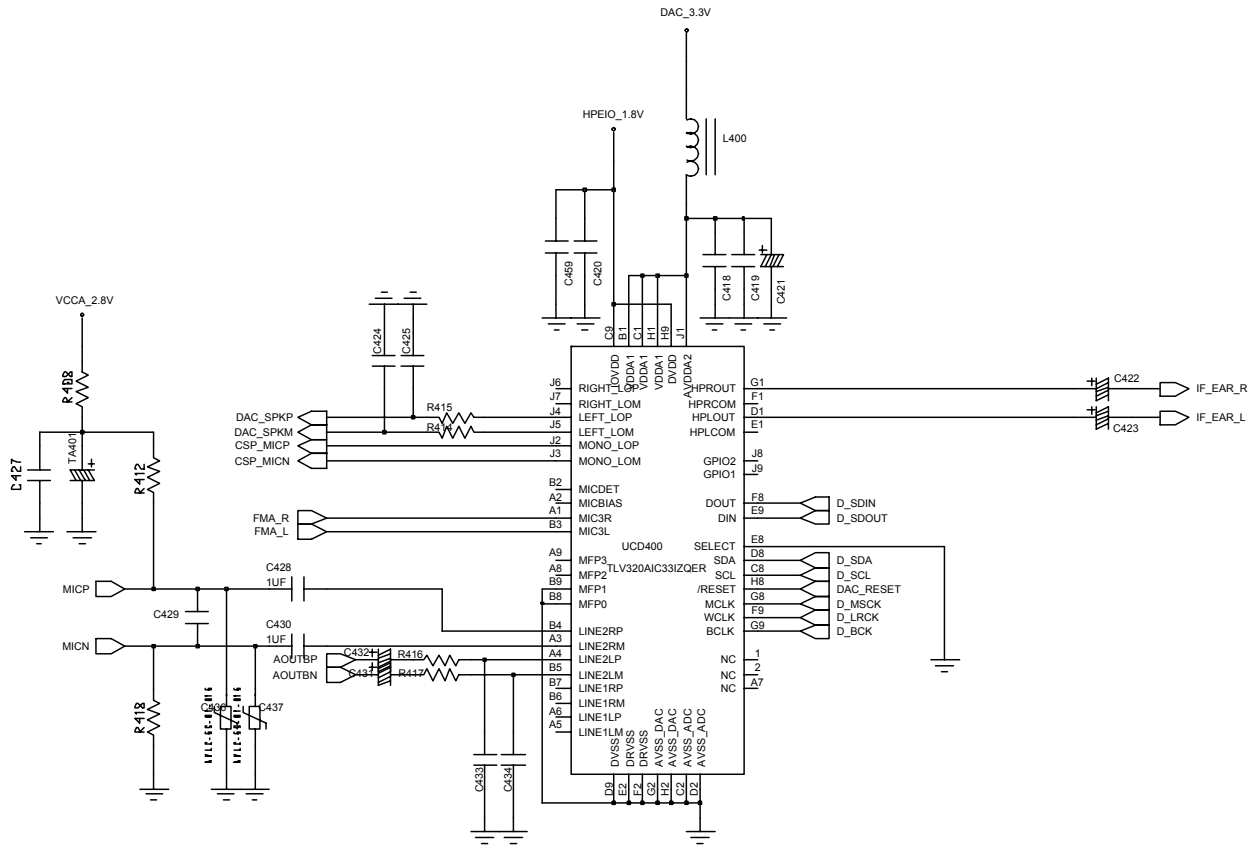






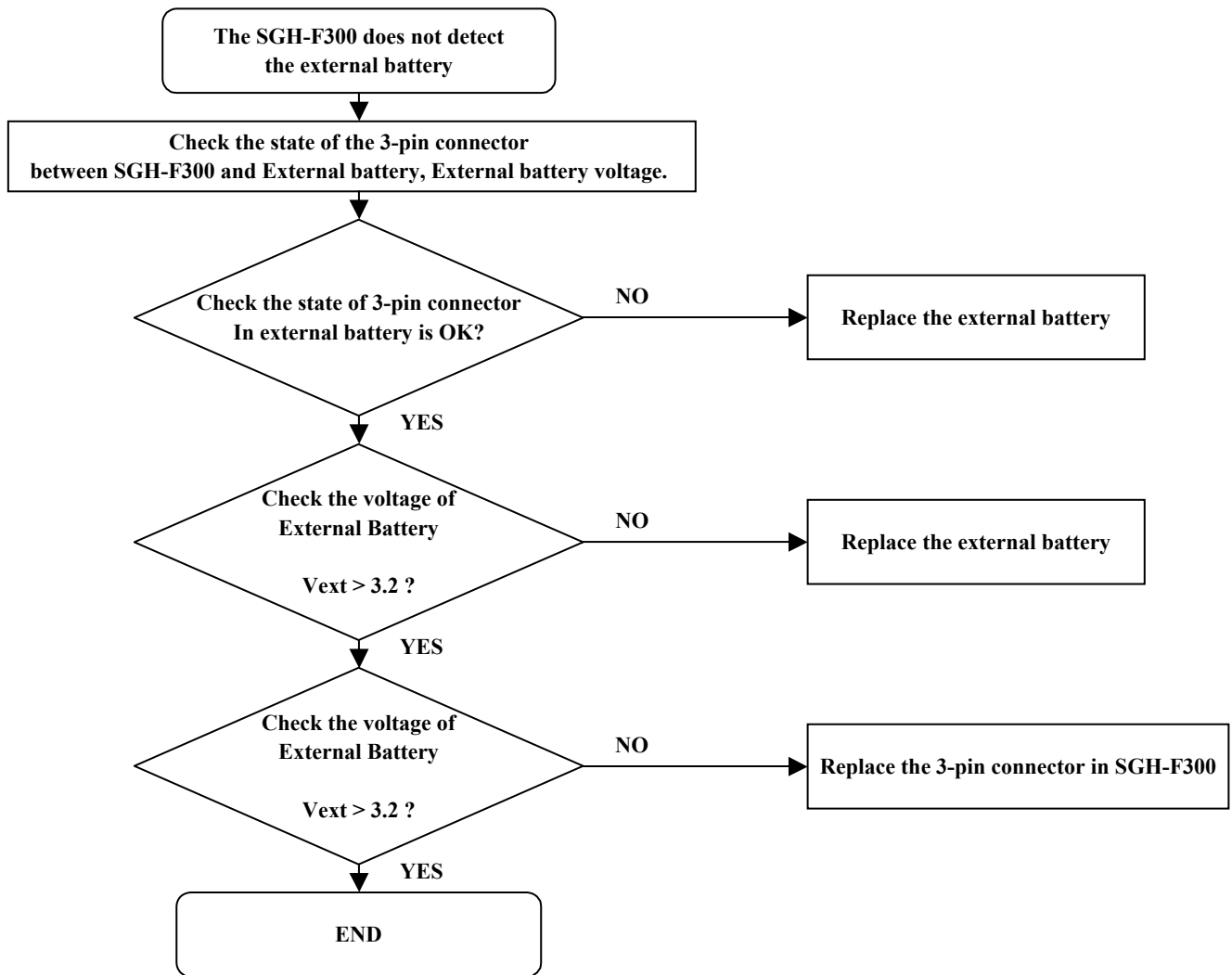
### 3-1-7. Mp3 Part

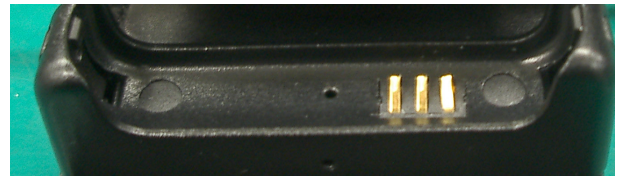
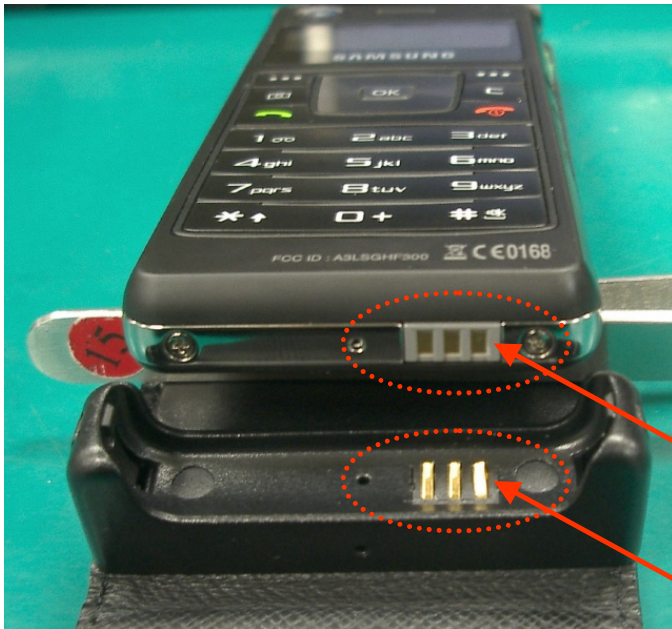






### 3-1-8. External Battery



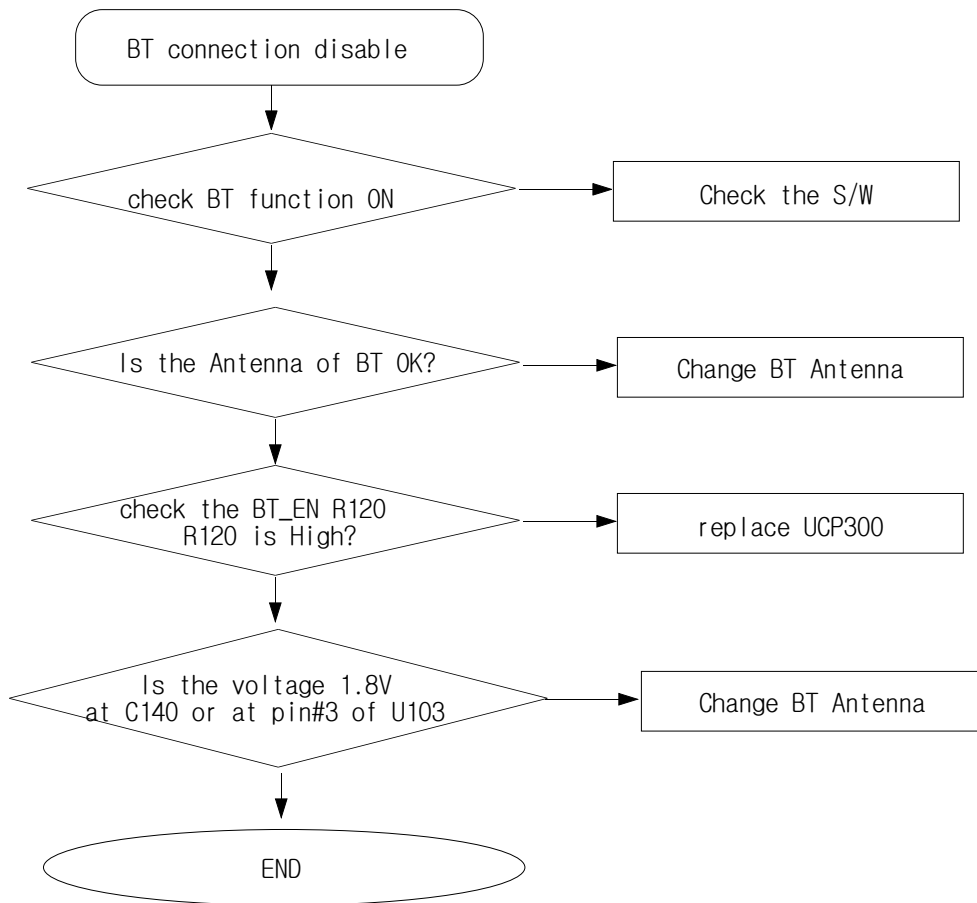


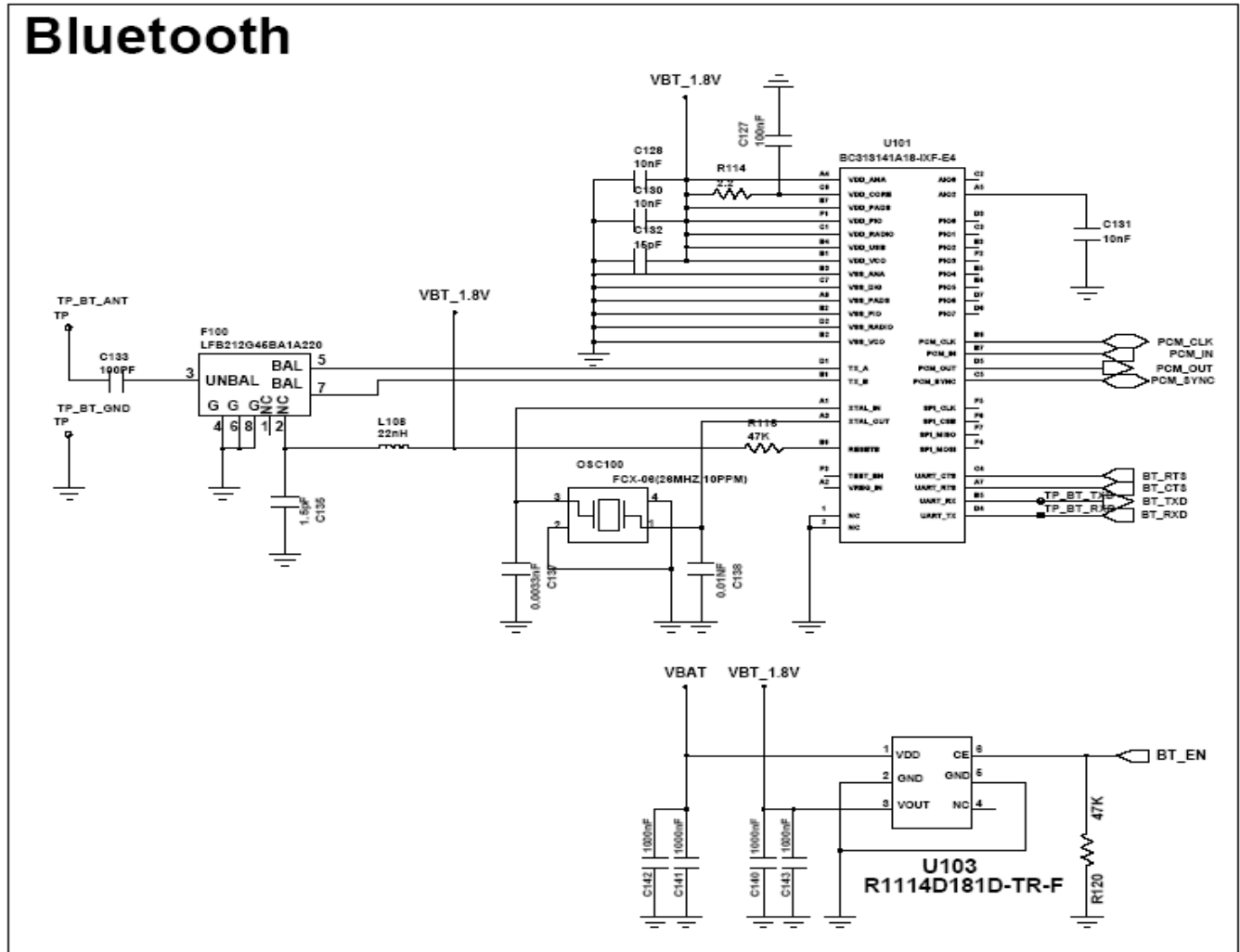
**GND Vf Vext**

**Pin Array of external battery**

**The 3-pin connector of SG H-F300**

**The 3-pin connector of external battery**

**3-1-9. BLUETOOTH**

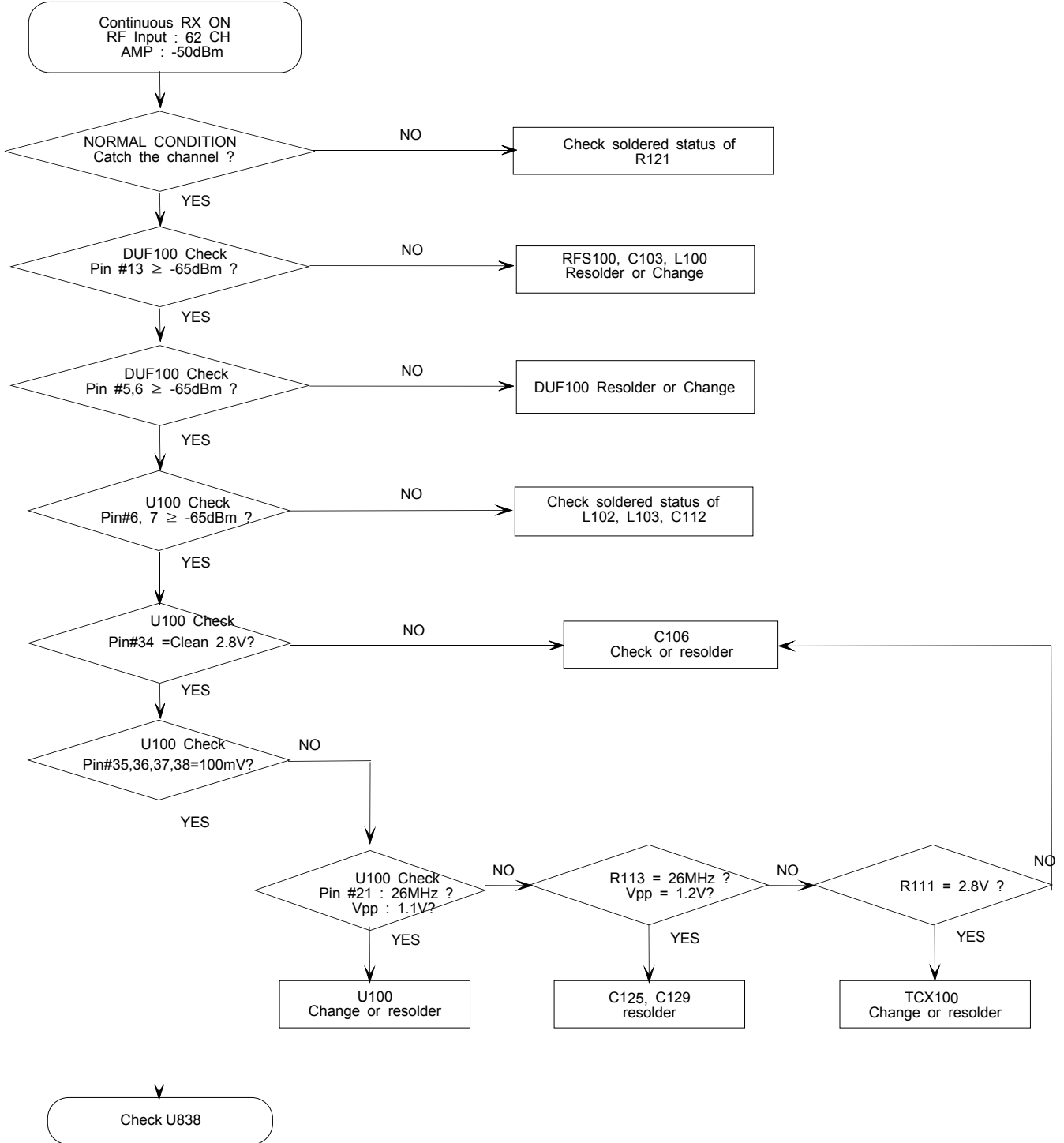




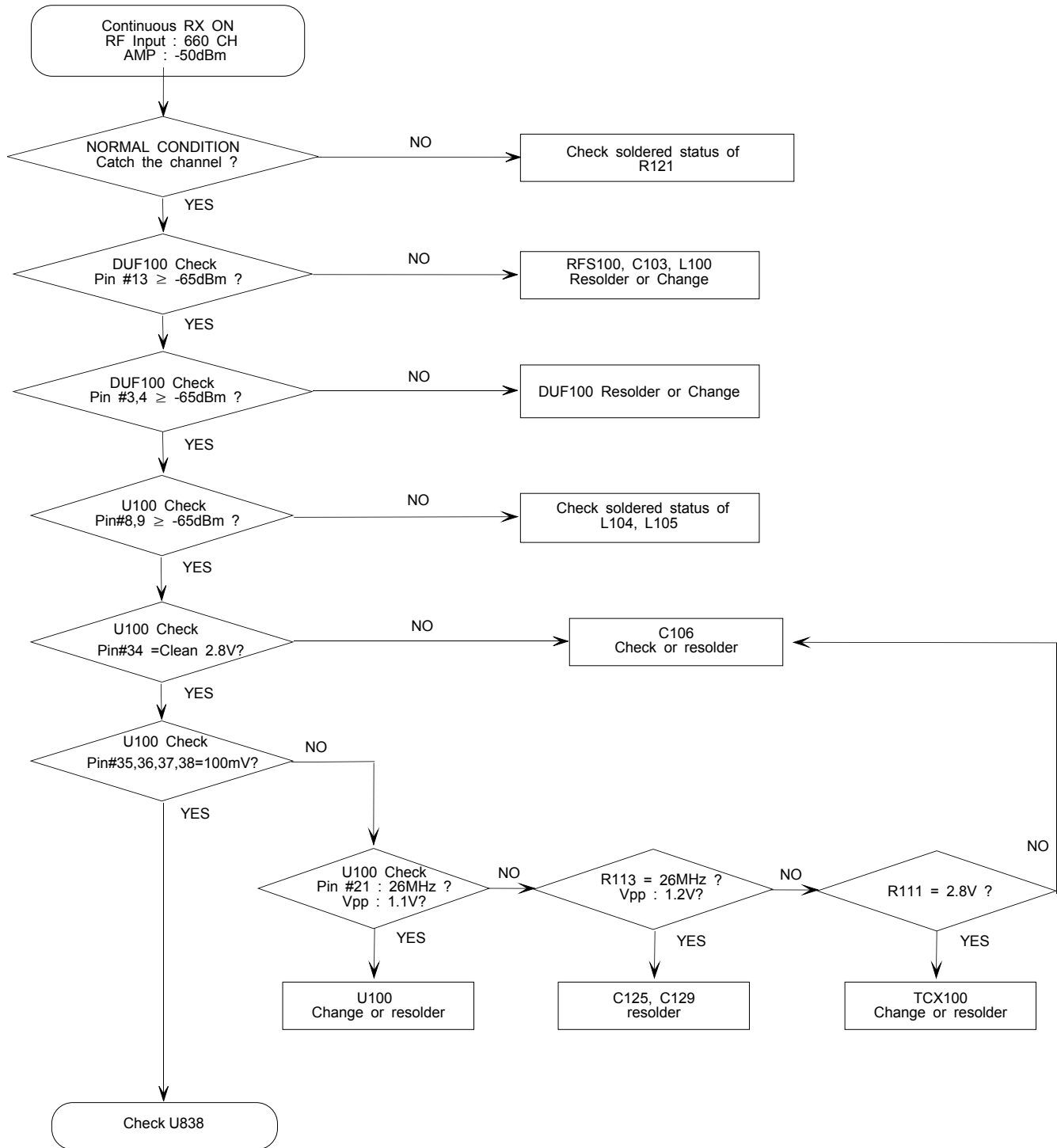


### 3-2.RF

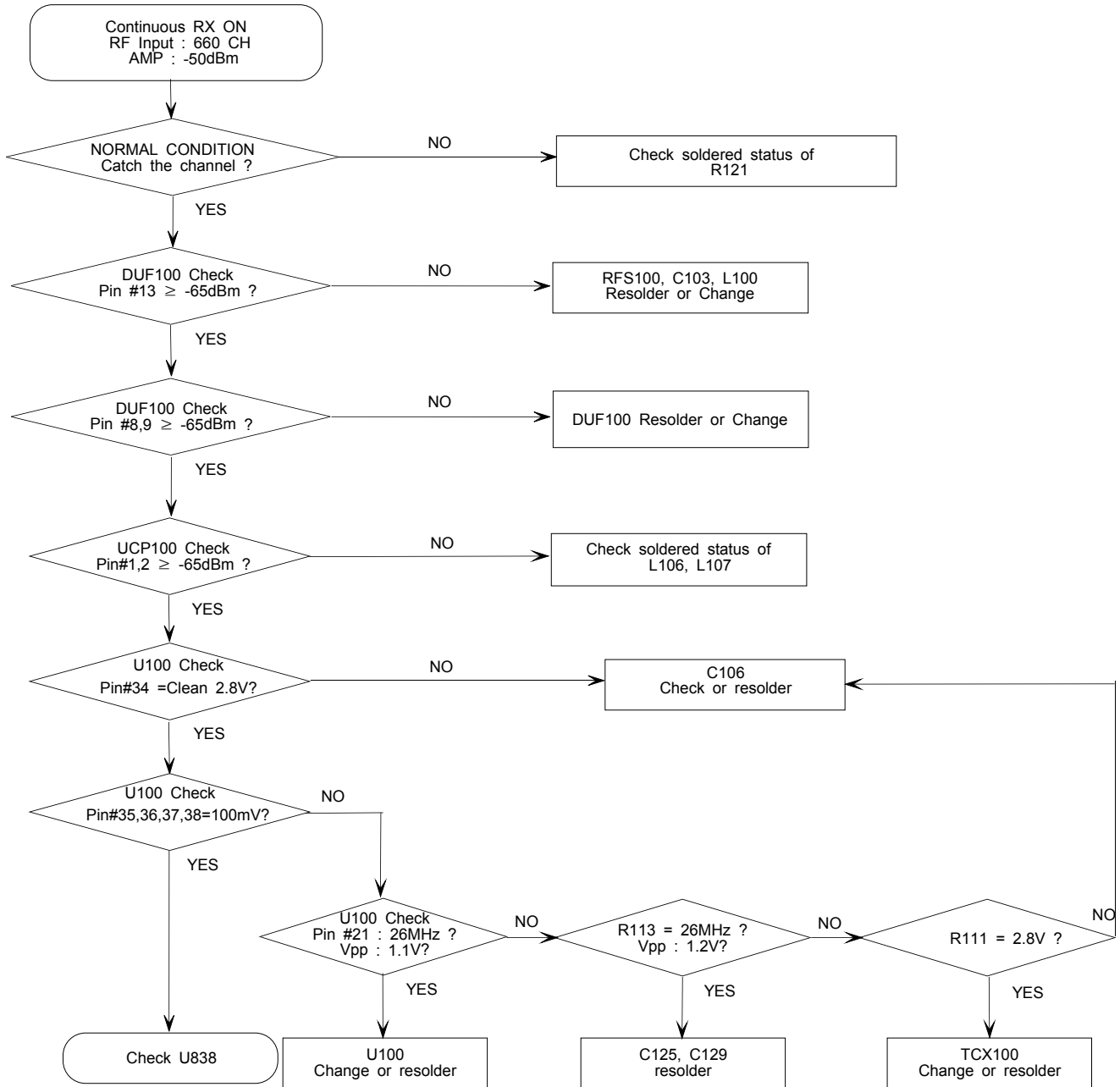
#### 3-2-1. EGSM RX

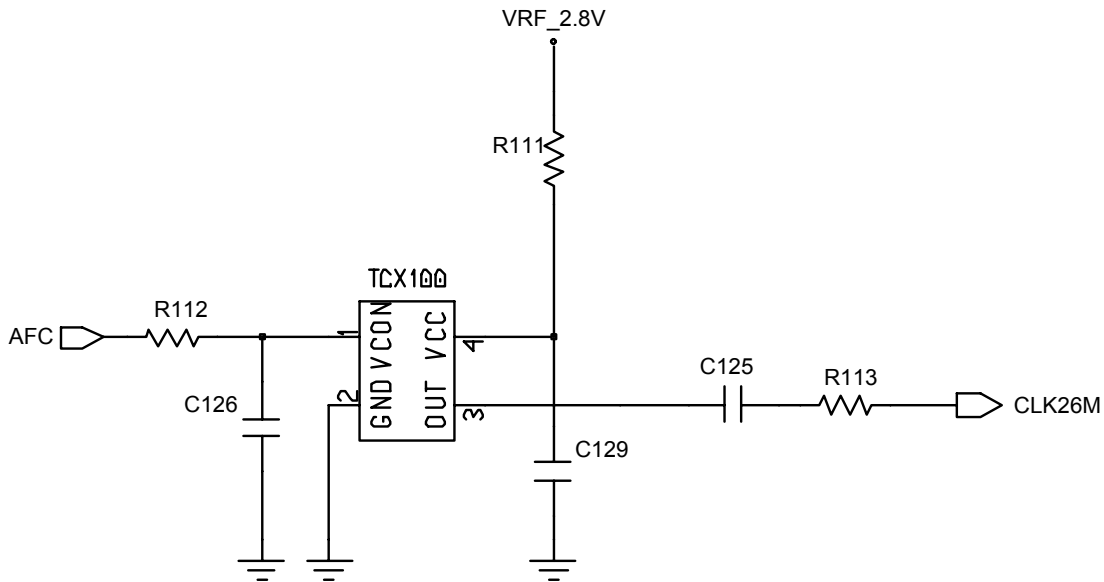
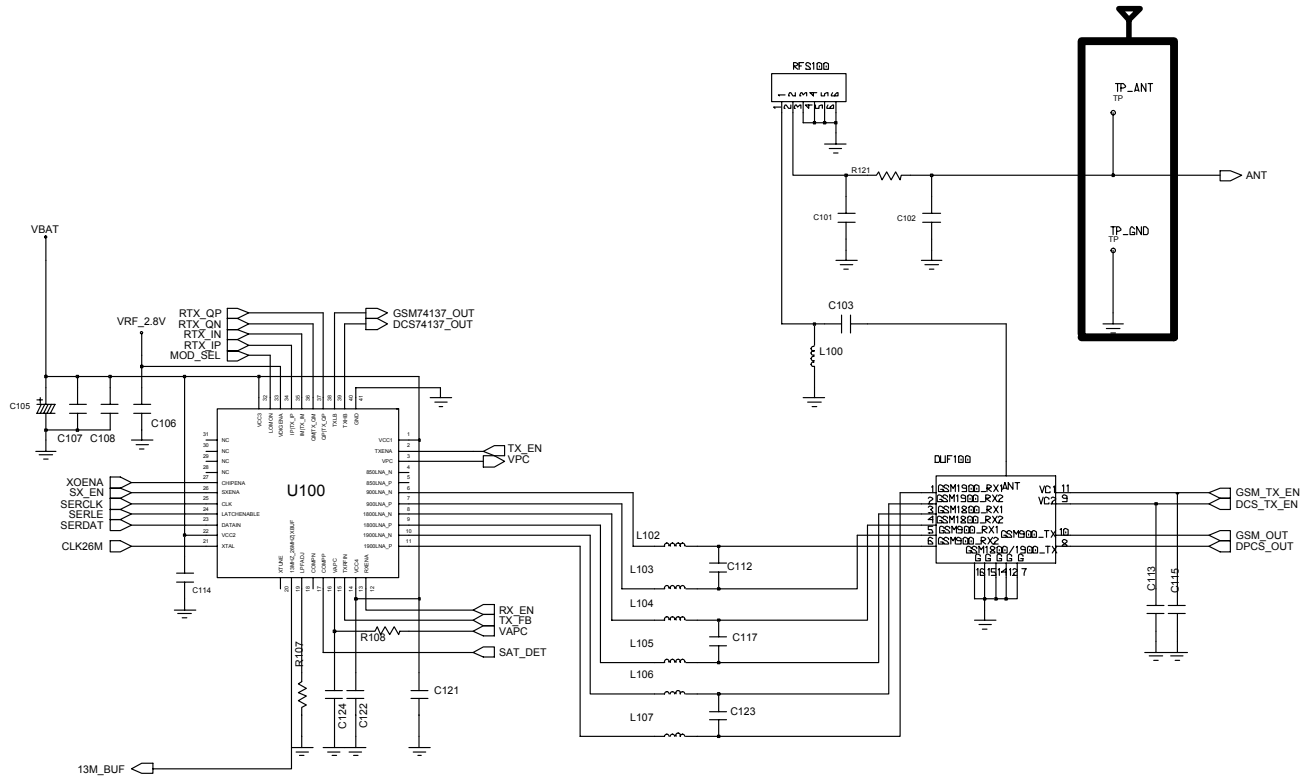


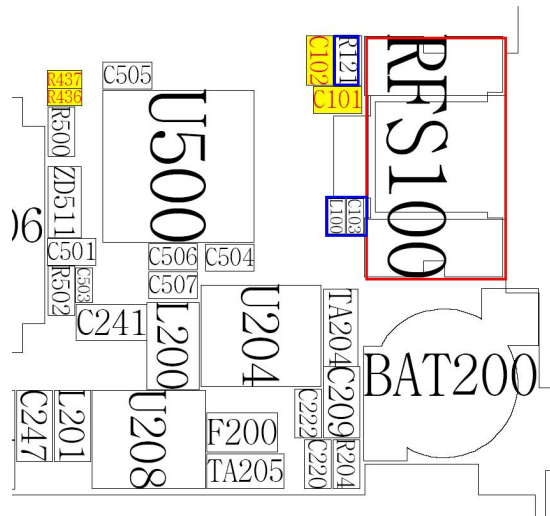
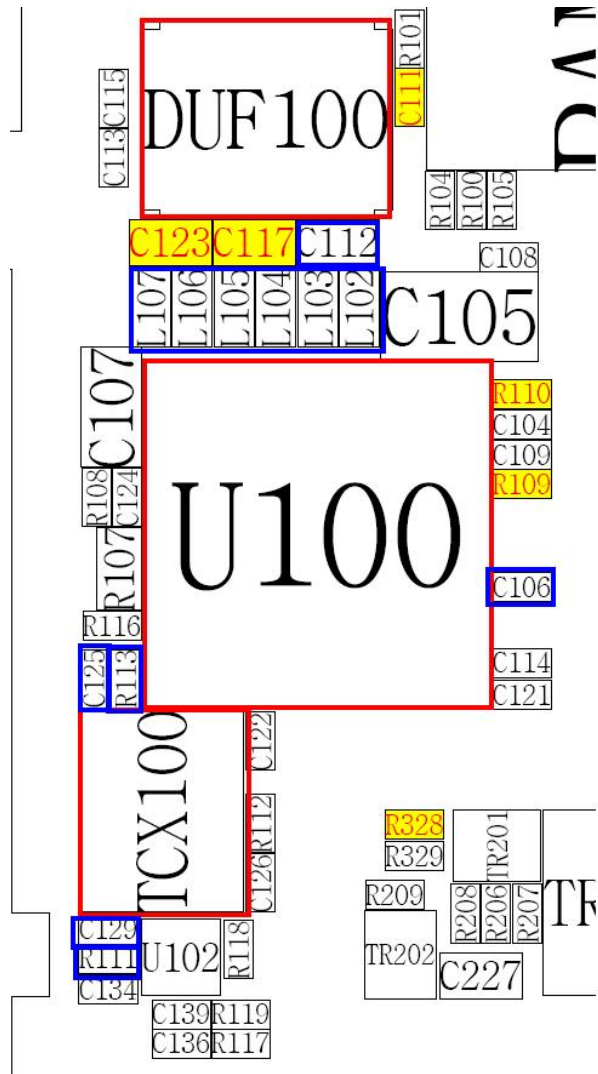
### 3-2-2. DCS RX



### 3-2-3. PCS RX

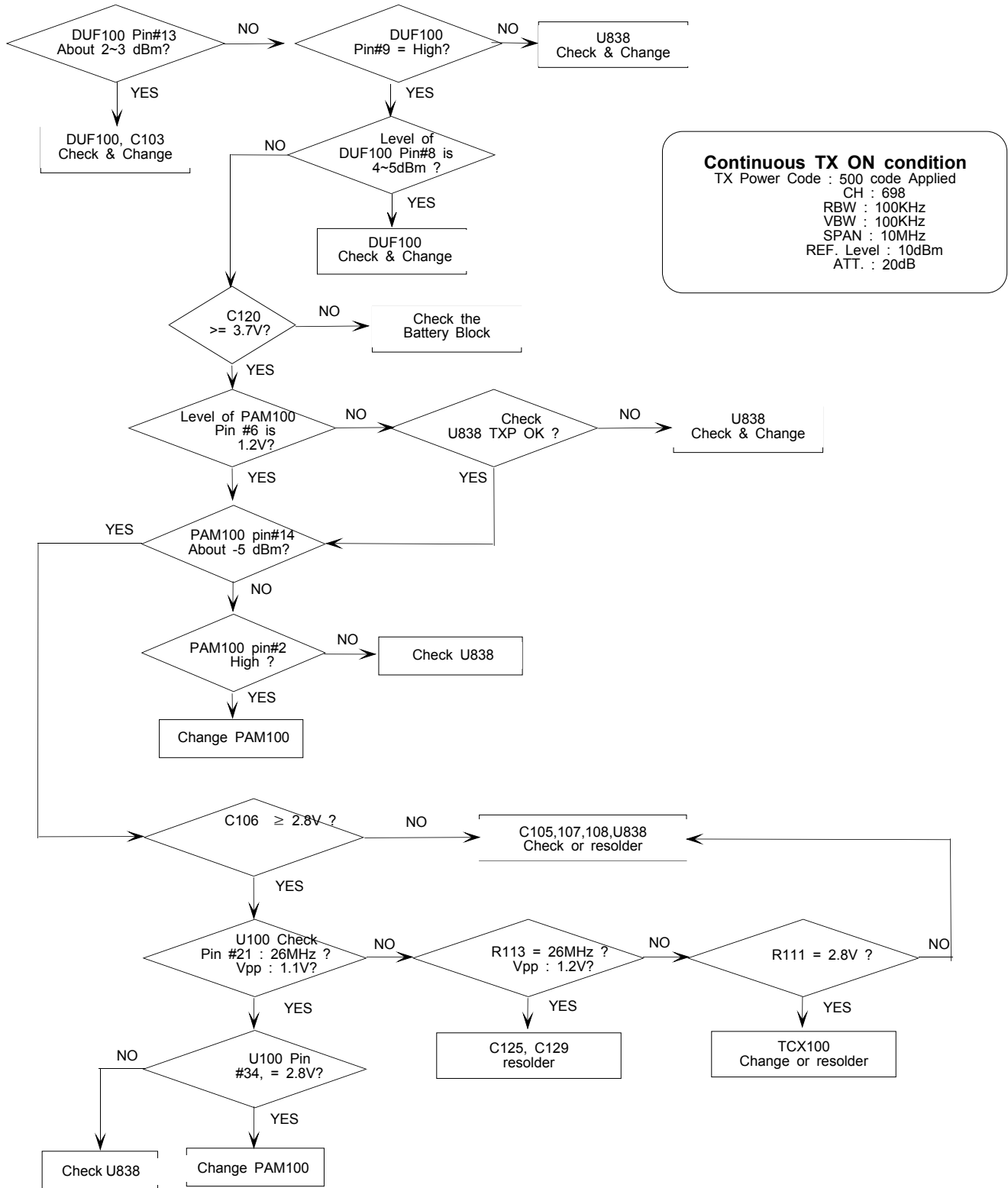








### 3-2-5. DCS/PCS TX



**Continuous TX ON condition**  
 TX Power Code : 500 code Applied  
 CH : 698  
 RBW : 100KHz  
 VBW : 100KHz  
 SPAN : 10MHz  
 REF. Level : 10dBm  
 ATT. : 20dB



