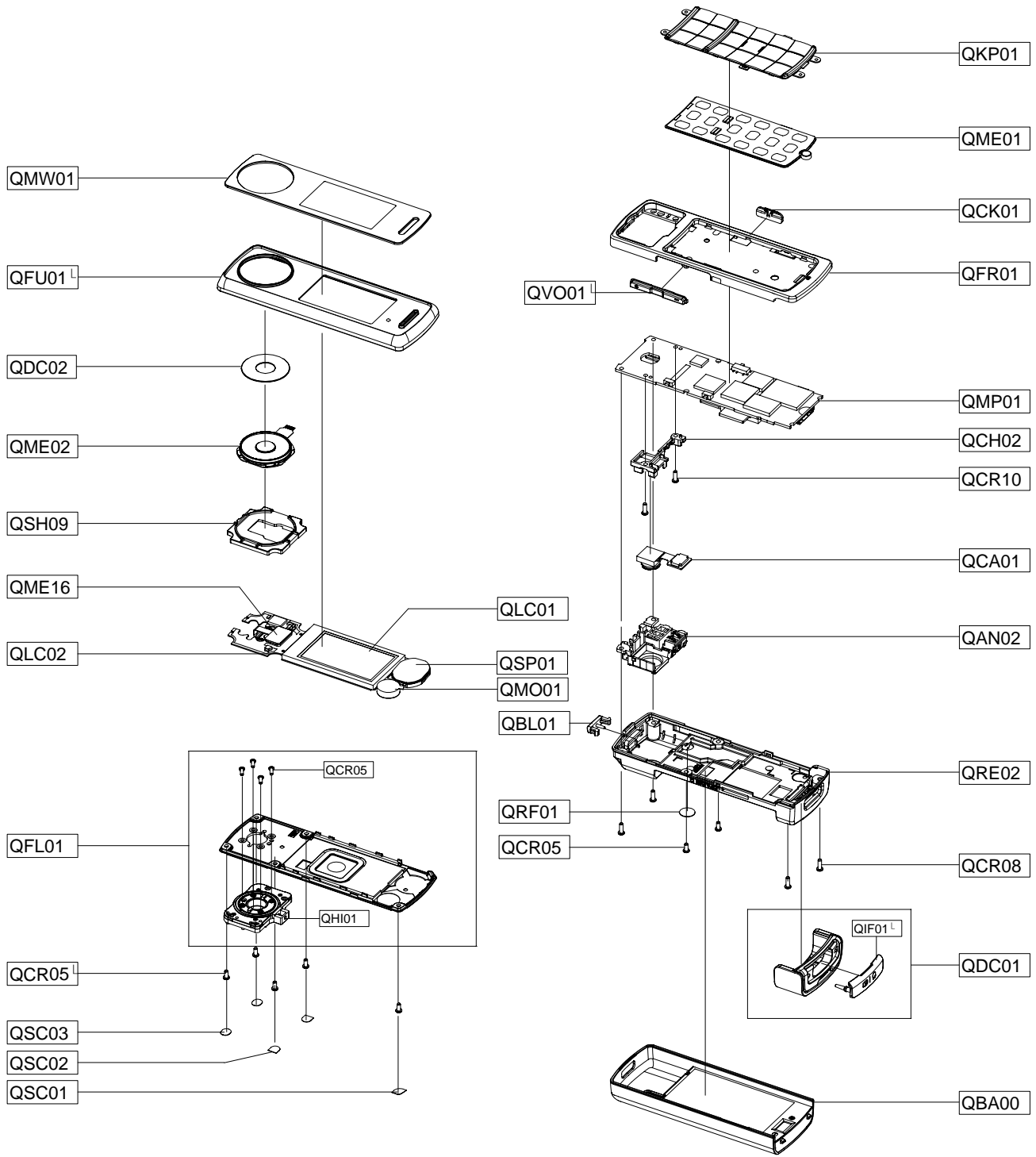


# 5. Exploded View and Parts List

## 5-1. Cellular phone Exploded View



## 5-2. Cellular phone Parts list

Design LOC	Description	SEC CODE
QAN02	INTENNA-SGH-F210	GH42-01304A
QBA00	BATTERY-750MAH,ME/BLU,ENG,M	GH43-02922A
QBL01	PMO LOCKER-BATT	GH72-39899D
QCA01	CAMERA MODULE	GH59-04536A
QCH02	PMO-CAMERA HOUSING	GH72-39898A
QCK01	PMO-KEY HOLD	GH72-39902A
QCR05	SCREW-MACHINE	6001-001478
QCR05	SCREW-MACHINE	6001-001478
QCR05	SCREW-MACHINE	6001-001478
QCR08	SCREW-MACHINE	6001-001611
QCR10	SCREW-MACHINE	6001-001633
QDC01	ASSY COVER-DECO	GH98-06539A
QDC02	ASSY DECO-WHEEL KEY	GH98-05629A
QFL01	ASSY CASE-SWING LOWER	GH98-04984A
QFR01	ASSY CASE-FRONT	GH98-04982A
QFU01	ASSY CASE-SWING UPPER	GH98-04981A
QHI01	ASSY HINGE-FRONT	GH98-05464A
QIF01	PMO COVER-IF	GH72-42718D
QKP01	ASSY KEYPAD-MAIN(SER/MR)	GH98-05958D
QLC01	LCD-MAIN SGHF210	GH07-01225A
QLC02	ELA UNIT-SGHF210 LCD MODULE,SV	GH96-02842A
QME01	KEY FPCB-SGHF210 KEY PAD FPCB(	GH59-05226A
QME02	KEY FPCB-WHEEL KEY,F210	GH59-04534A
QME16	FPC-CON TO CON,F210	GH41-01769A
QMO01	MOTOR DC-SGHF210	GH31-00355A
QMP01	PBA MAIN-SGHF210	GH92-03715A
QMW01	PMO COVER-MAINWINDOW	GH72-42026A
QRE02	ASSY CASE-REAR	GH98-04986D
QRF01	TAPE-SHEET RF	GH74-32459D
QSC01	TAPE-SHEET SCREW CAP TOP	GH74-32454A
QSC02	TAPE-SHEET SCREW CAP MID	GH74-32455A
QSC03	TAPE-SHEET SCREW CAP BOT L	GH74-32456A
QSH09	ASSY CASE-NAVIKEY SHIELD	GH98-04983A
QSP01	SPEAKER	3001-002175
QVO01	ASSY KEY-VOLUME	GH98-06568A

Description	SEC CODE
CBF INTERFACE-MIC CABLE,BLK,S2	GH39-00727A
CBF INTERFACE-DATA LINK CABLE(	GH39-00859B
ADAPTOR-ATADS10EBE,BLK,EU	GH44-01702A
EARPHONE-STEREO HEADSET,S20P,M	GH59-02977A
LABEL(R)-WATER SOAK	GH68-09361A
TAPE GASK	GH74-33225A
TAPE INSU	GH74-18904A
MPR-TAPE LCD BTM MASKING	GH74-22777A
MPR-TAPE MASKING LCD	GH74-23786A
MPR-TAPE MASKING SM LCD	GH74-24546A
SPONGE	GH74-31970A
VINYL-BOHO REAR	GH74-35732A
VINYL-BOHO WINDOW	GH74-33878A
S/W CD-SAMSUNG PC STUDIO 3.1,F	GH46-00439A
MANUAL-SFC	GH68-04336A
MANUAL USERS-EU RUSSIAN	GH68-15515A
BAG PE	6902-000297
LABEL(P)-UNIT SEAL	GH68-00518B
LABEL(R)-MAIN(SER)	GH68-15849B
BOX(P)-UNIT MAIN(SER)	GH69-05817B
CUSHION-CASE(EU)	GH69-05819A