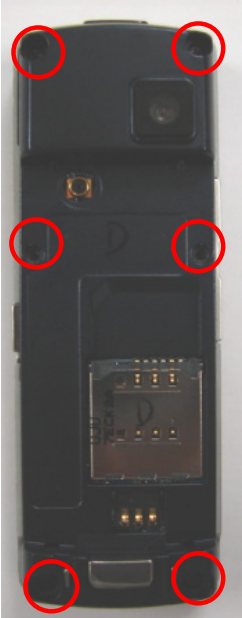
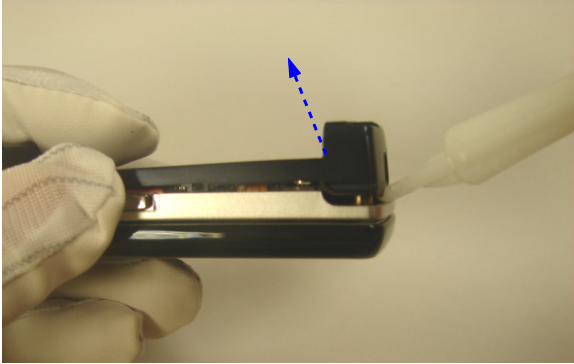
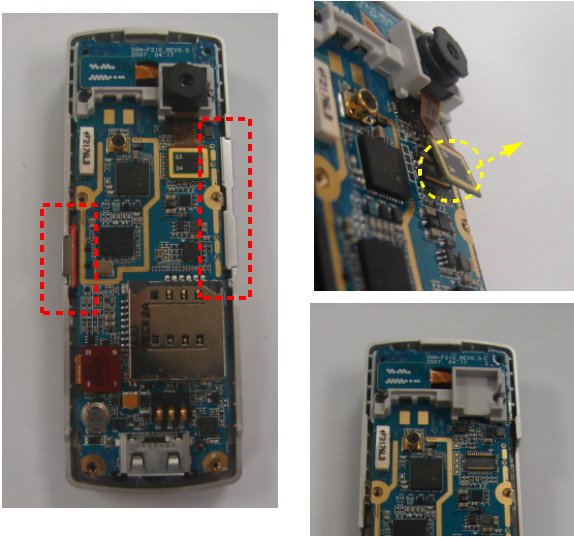
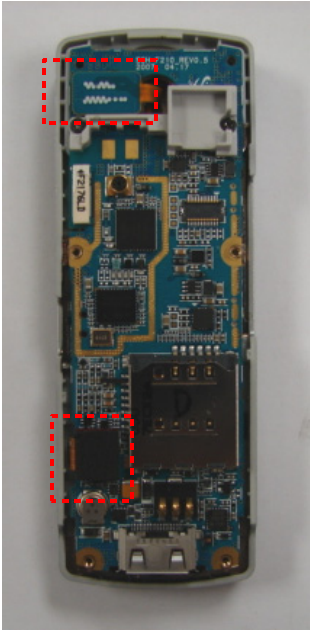
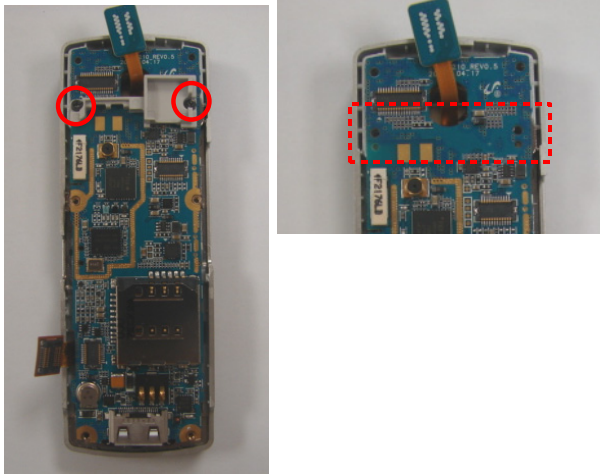


7. Disassembly and Assembly Instructions

7-1. Disassembly

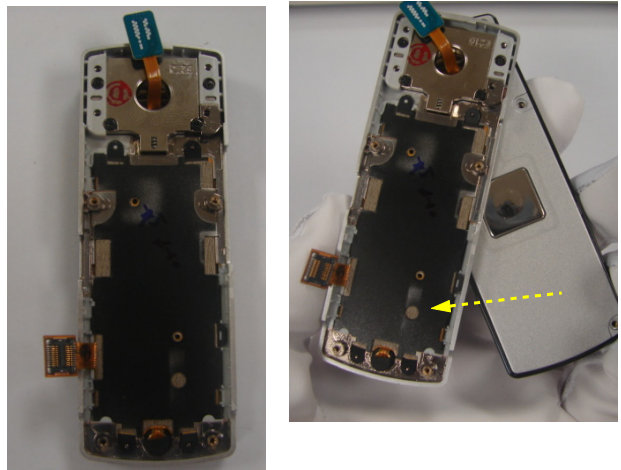
<p>1</p> 	<p>2</p> 
<p>※ caution</p> <p>1. Remove a screw at six points as shown.</p>	<p>1) Be cautious not to damage the rear cover</p> <p>※ caution</p> <p>1. Make space between rear cover and front cover from the lower part of set, by assembly stick.</p>
<p>3</p> 	<p>4</p> 
<p>1) Be cautious not to damage FPCB and connector</p> <p>※ caution</p> <p>1. Remove a hold key and a volume key as shown.</p> <p>2. Separate the camera connector</p> <p>3. Separate the camera from the camera housing.</p>	<p>1) Be cautious not to damage FPCB and connector</p> <p>※ caution</p> <p>1. Separate the 3*4 key connector from the board</p> <p>2. Separate the LCD connector from the board.</p>

5



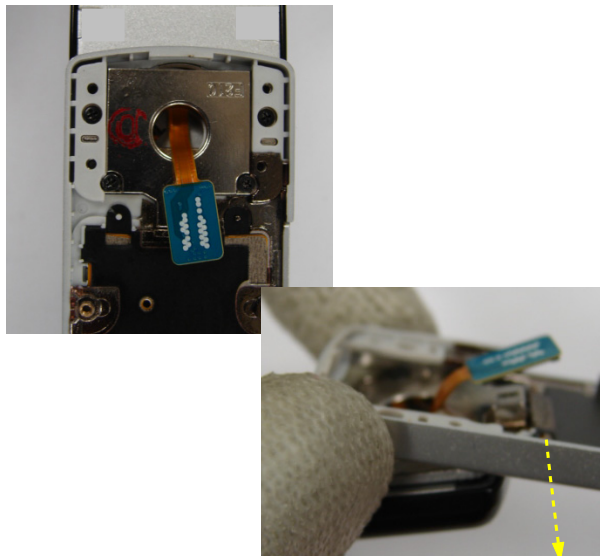
- 1) when removing the screws from camera housing, be careful not to damage the housing
 ※ caution
- 1.Remove the screw at the left and right side of camera housing
 2. Separate the camera housing from PBA.
 3. Separate the PBA from the SET.

6



- ※ caution
1. Let it open by turning the front to the clockwise.

7

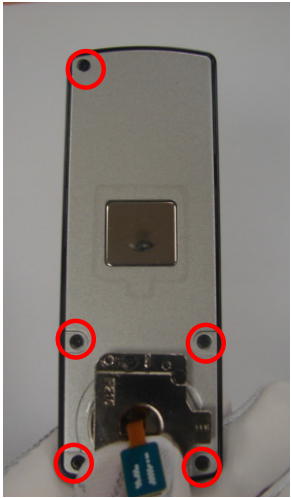
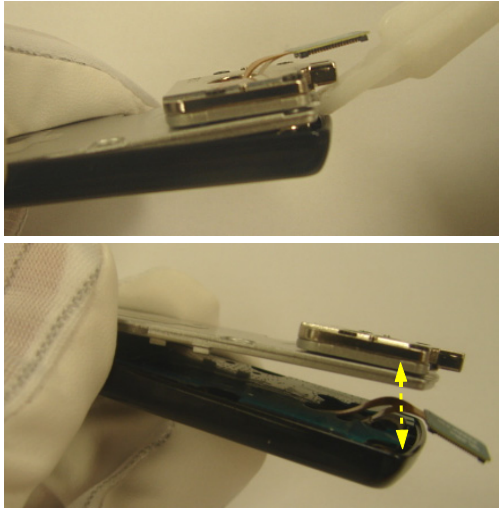
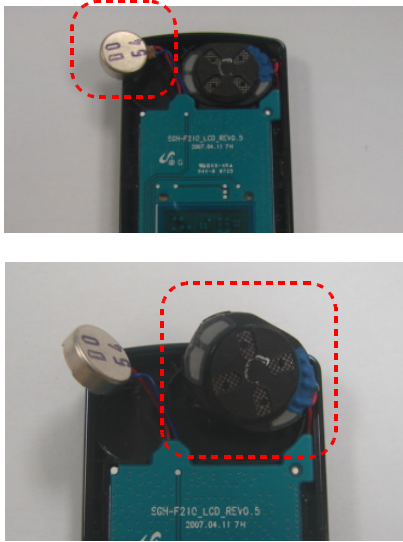
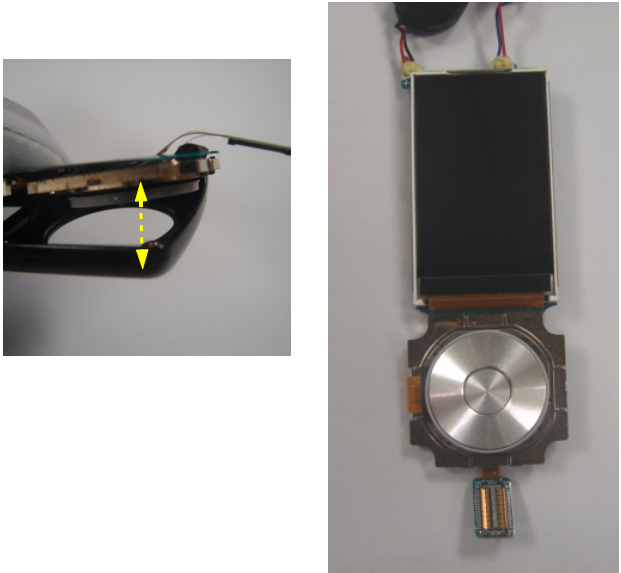


- ※ caution
1. After the front open, pull it down as shown.
 2. The swing ASS'Y and the front separate by pulling the front down.

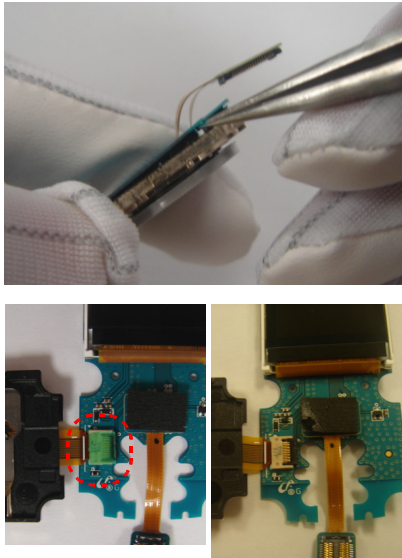
8



- ※ caution
- 1.Swing the hinge in the counter clockwise
 - 2.Remove the screw sheet at the five points as shown.

<p>9</p> 	<p>10</p> 
<p>※ caution</p> <p>1. Loosen the screw at the five points of lower case.</p>	<p>※ caution</p> <p>1. By a assembly stick, separate the lower from the lower part.</p>
<p>11</p> 	<p>12</p> 
<p>※ caution</p> <p>1.Take out the vibration motor from the land. 2.Remove the speaker.</p>	<p>※ caution</p> <p>1. Remove the sub-PCB from upper.</p>

13

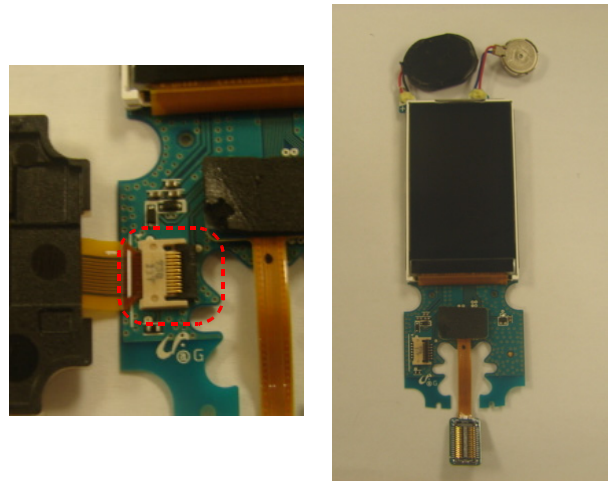


1) When removing bracket, be cautious not to damage.

※ caution

1. Open the bracket by lifting to the left.
2. Remove the green insulated tape.

14

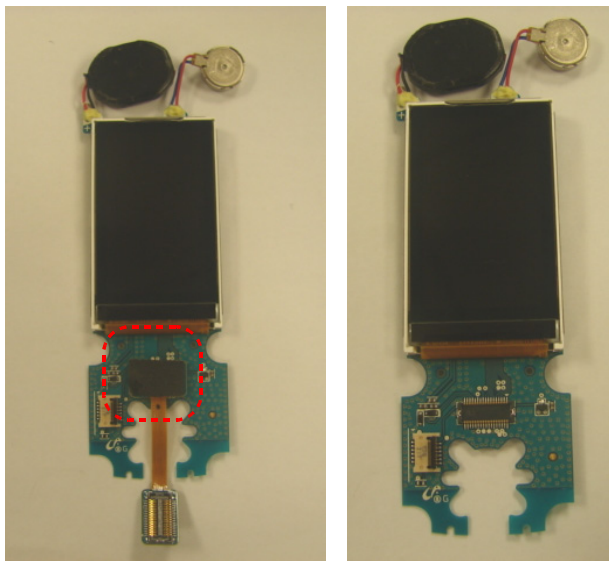


1) When removing bracket , be cautious not to damage FPCB.

※ caution

1. Lift the locker of connector.
2. Separate the wheel key ass'y.

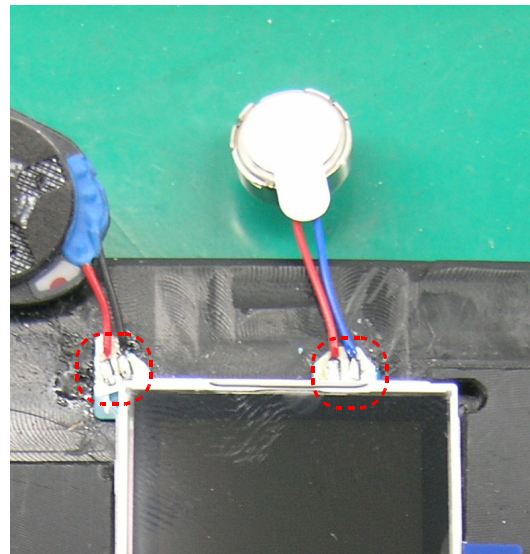
15



※ caution

1. Separate the main connector as shown.

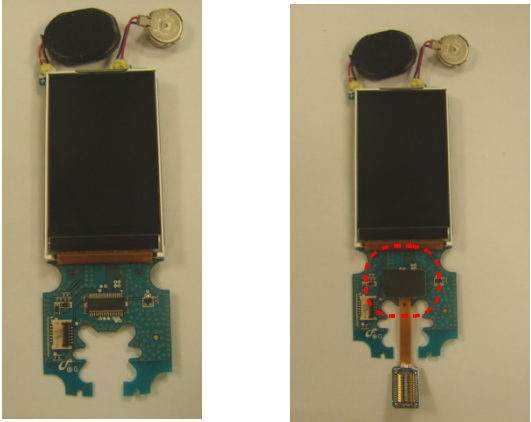
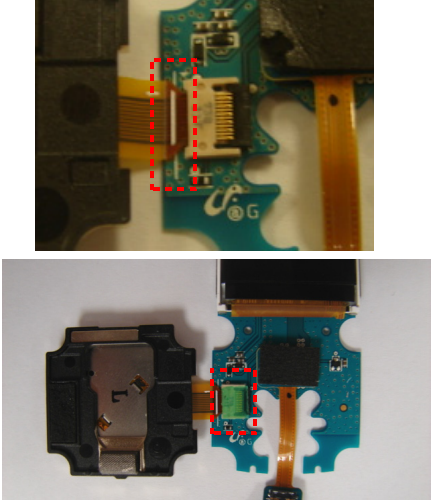
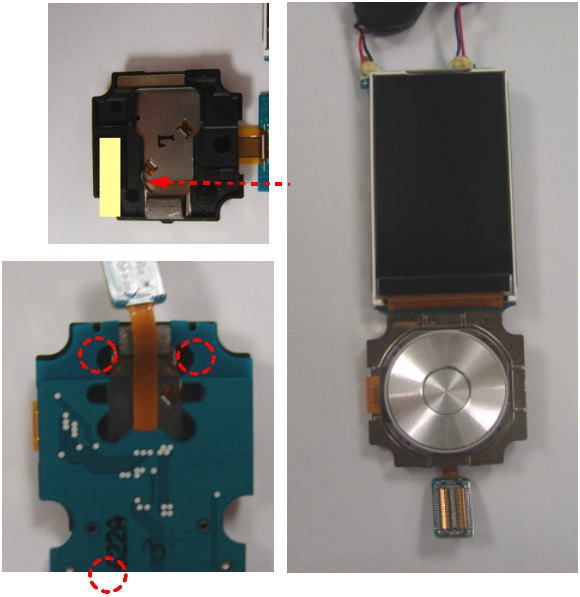
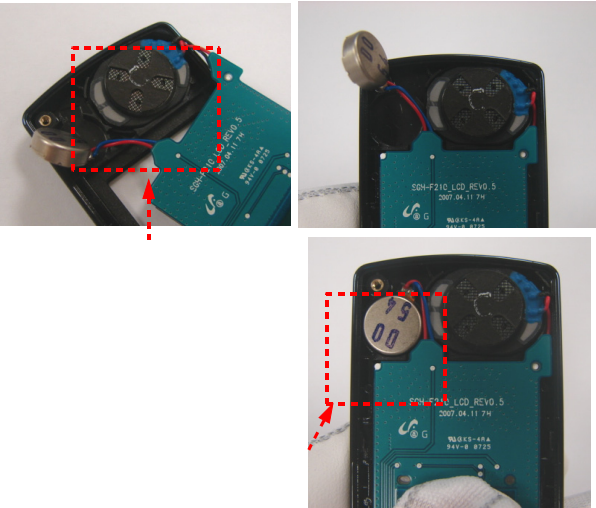
16



※ caution

1. Remove the bond.
2. Separate the motor and speaker after lead is removed using soldering tool.

7-2. Assembly

<p>1</p>  <p>※ caution</p> <p>1. Connect the MAIN FPCB on the LCD ASS'Y.</p>	<p>2</p>  <p>1) Insert by the shown guide line. ※ caution 1. Insert the wheel key ASS'Y according to guide line 2. Fix it by locker after inserting connector. 3. Put the tape on the locker to fix locker.</p>
<p>3</p>  <p>1) Remove tape 2) Check whether hole of bracket and hole of PCB are aligned.</p> <p>※ caution</p> <p>1. Remove the tape of the bracket. 2. Land wheel key ASS'Y according to PCB hole, folding sub-PCB.</p>	<p>4</p>  <p>1) When speaker is landed, move the wire to the lower part of PCB not to damage. 2) When motor is landed, be cautious not to insert wire under the motor.</p> <p>※ caution</p> <p>1. Land the speaker at upper part. 2. Land the motor at upper part.</p>

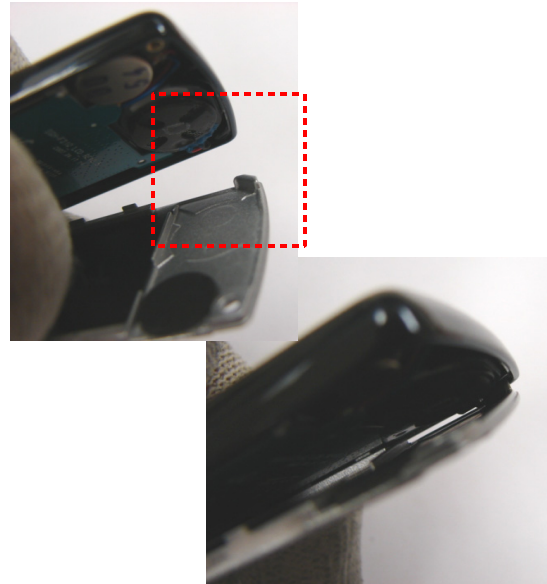
5



※ caution

1. Let the main connector go through the hole of lower.

6



1) Push the lower after the lower and upper are combined.

※ caution

1. Assemble upper and lower after hook of lower and locker of lower are combined.

7



※ caution

1. Fasten the 5 point screws at the lower.

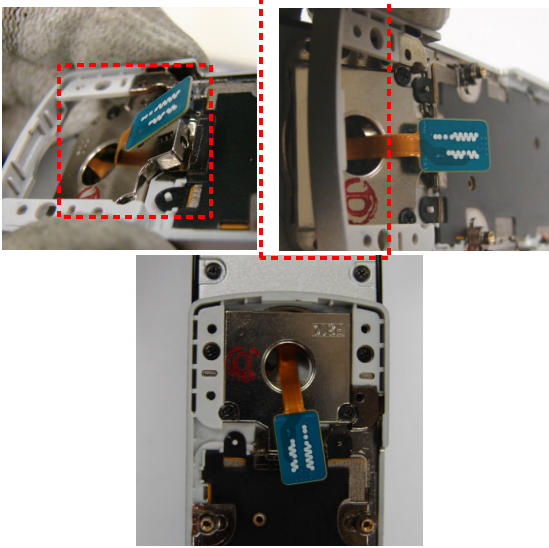
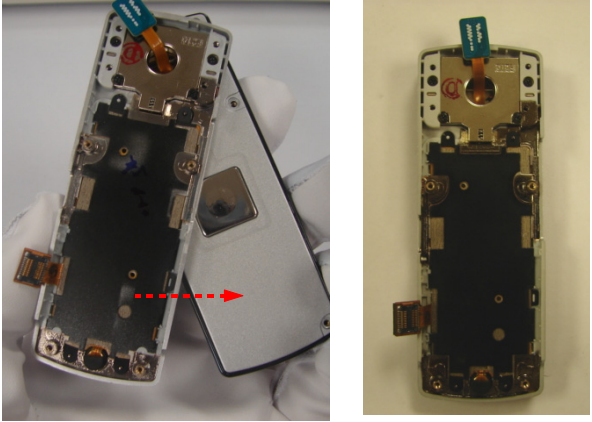
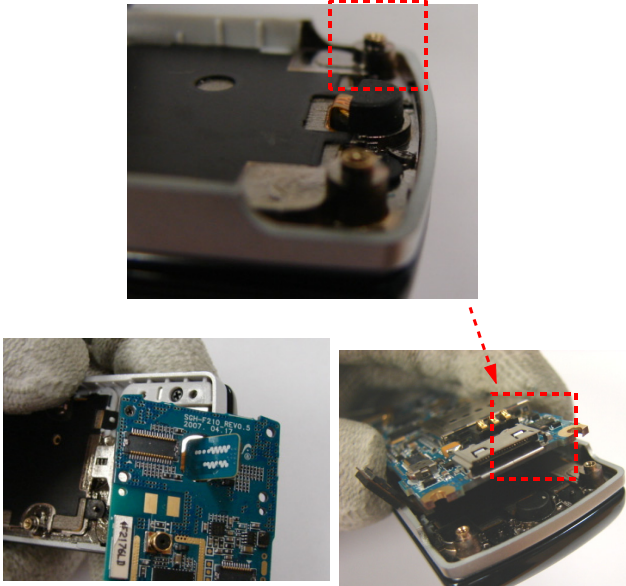
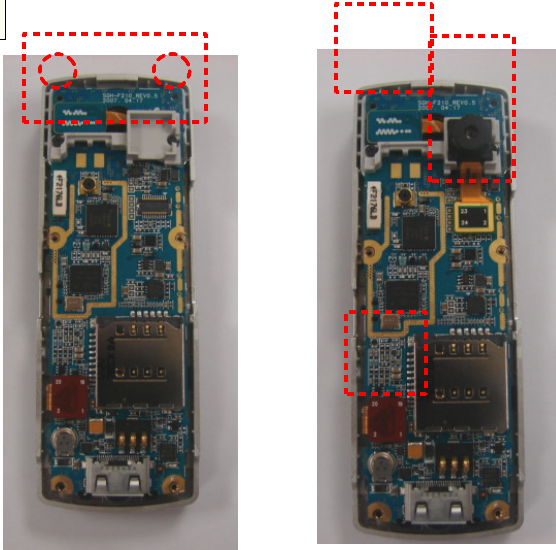
8



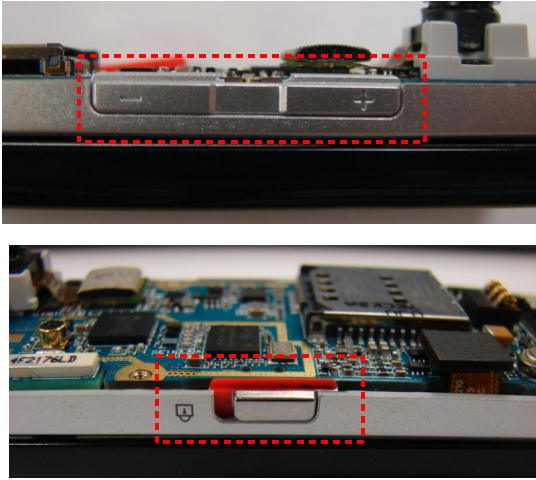
1) Be cautious not to damage cover sticker.

※ caution

1. Put the cover sticker at the five point of the lower.

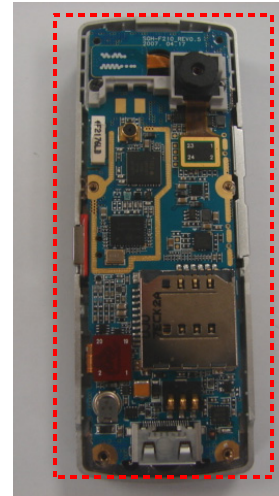
<p>9</p> 	<p>10</p> 
<p>※ caution 1. According to the hinge shape, combine the front upper part as shown.</p>	<p>※ caution 1. Align the front and the lower by means of swinging to the counter clock wise.</p>
<p>11</p> 	<p>12</p> 
<p>1) check the MIC as shown. 2) Check the position of MIC, again. ※ caution 1. Land the MIC on the desired position, exactly 2. Turning PBA up to 90 degree, insert FPCB into the hole. 3. Land PBA as shown.</p>	<p>1) Align the hole of housing and the hole of PBA. 2) When combining the connectors, be cautious not to damage the pin of each connector. ※ caution 1. Land the camera housing according to the guide hole. 2. Fasten the screw at the camera housing. 3. At the upper part, combine the main connector. 4. Combine the 3*4 key connector at the lower part. 5. After landing camera at the housing, combine the connector.</p>

13



- 1) Check the position of +/-
 ※ **caution**
 1. Combine the volume key.
 2. Combine the hold key.

14



- ※ **caution**
 1. Check the status of each connector, volume key, and hold key.

15



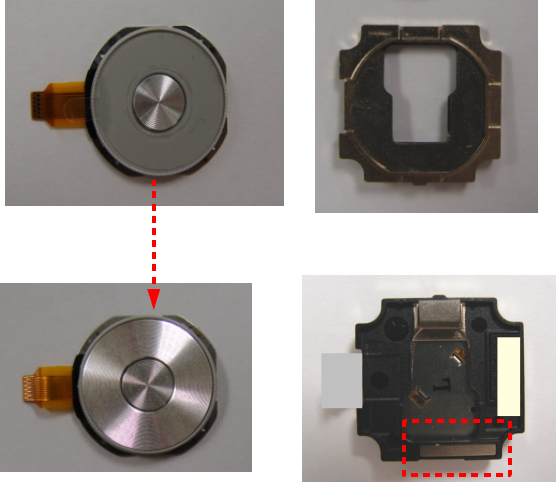
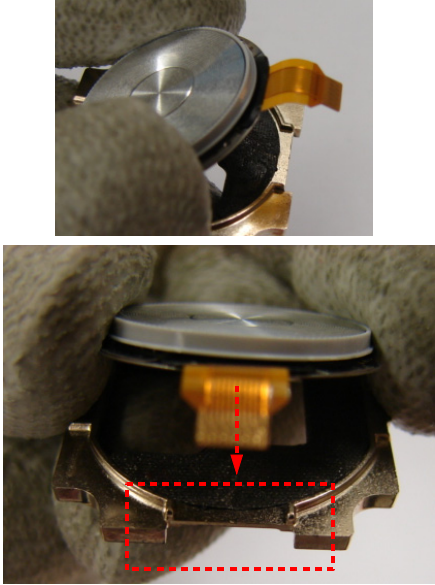
- 1) Push rear carefully when assembling rear
 ※ **caution**
 1. Combine the hook of rear's upper on the locker of front.
 2. Combine sequentially from up and down.

16



- ※ **caution**
 1. Fasten screws at the 6 point of the rear.

7-3. Wheel key Assembly

<p>1</p> 	<p>2</p> 
<p>1)Check the whether a magnetic is in bracket. ※ caution 1. Attach the deco on the wheel key 2. Remove the tape on the top of bracket</p>	<p>1)Wheel key can not be on the rib of the bracket. ※ caution 1.Land the wheel key to the direction, where rib does not exist.</p>