

7. Disassembly and Assembly Instructions

7-1. Disassembly

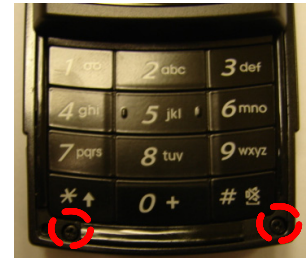
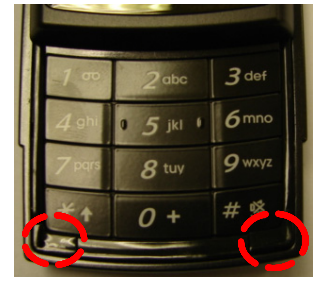
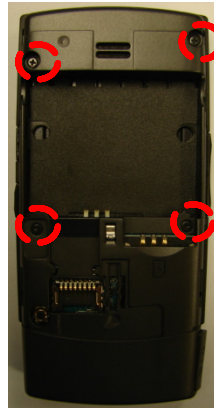
1



※ caution

- 1) Remove the battery and SIM CARD.

2

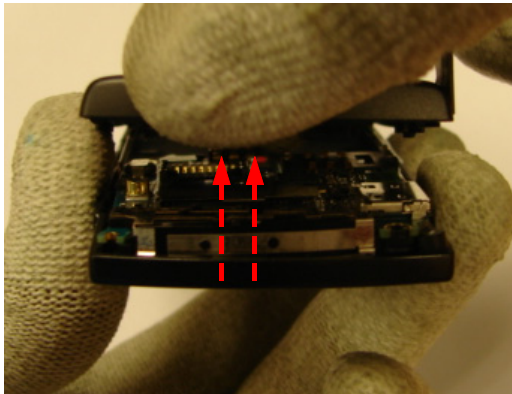


- 1) Unscrew 4 points of Rear.
- 2) Remove the screw cap of FRONT.
- 3) Unscrew 2 points of FRONT.

※ caution

- 1) Be careful not to scratch molding.

3

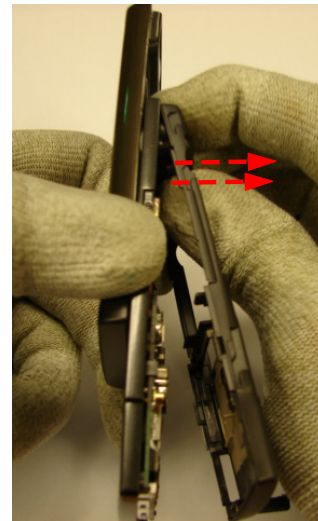


- 1) Disjoint both hooks of REAR.
- 2) Pull the foot of REAR.

※ caution

- 1) Be careful not to damage LOCKER.

4

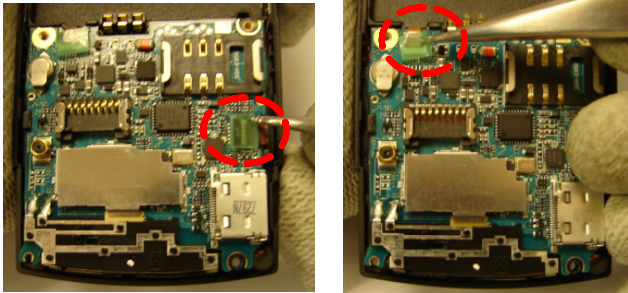


- 1) Hold the head of REAR and disassemble REAR.

※ caution

- 1) Be careful not to damage HOOK.

5

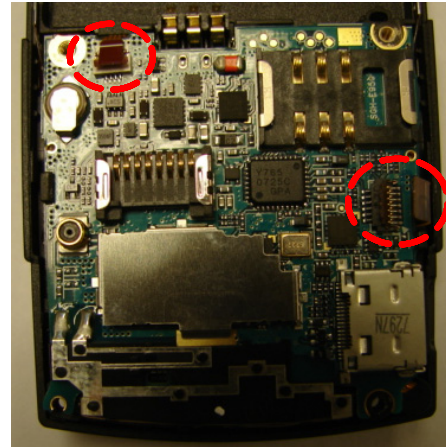


- 1) Remove the green insulating tape on the connector of KEY PBA.
- 2) Remove the green insulating tape on the connector of SPK and MOTOR.

※ caution

- 1) Be careful not to damage CONNECTOR.

6

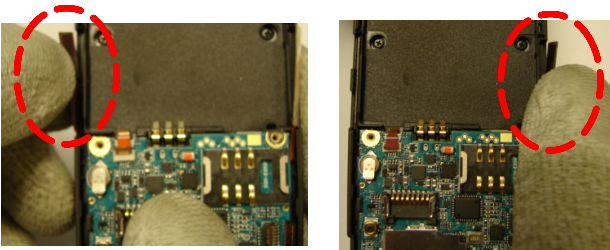


- 1) Pull out KEY PBA FPCB from the connector.
- 2) Pull out SPK and MOTOR FPCB from the connector.

※ caution

- 1) Be careful not to damage CONNECTOR.

7



- 1) Disassemble CAMERA KEY FPCB.
- 2) Disassemble VOLUME KEY FPCB..

※ caution

- 1) Be careful not to damage FPCB.

8

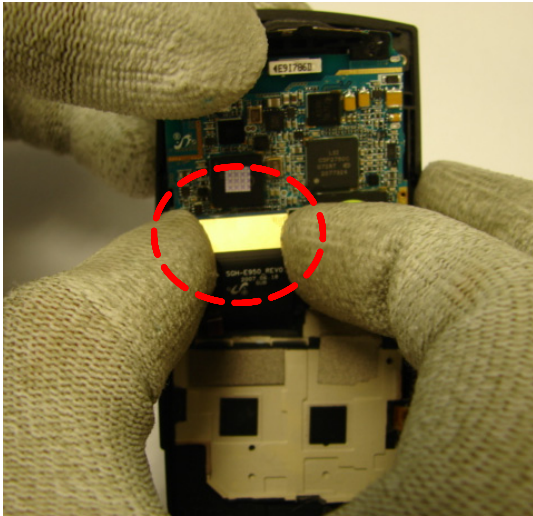


- 1) Disjoint HOOK holding MAIN PBA, and detach MAIN PBA from SET.

※ caution

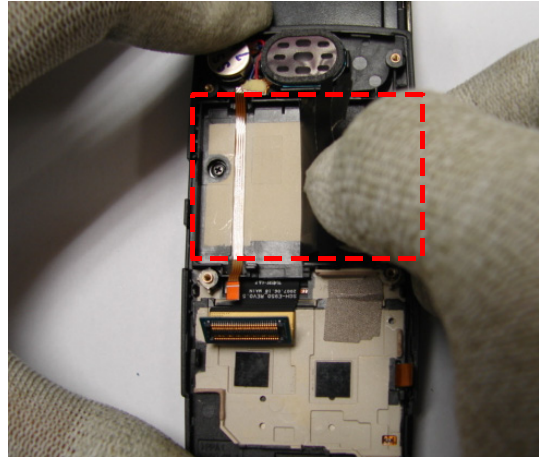
- 1) Be careful not to damage SLIDE FPCB.

9



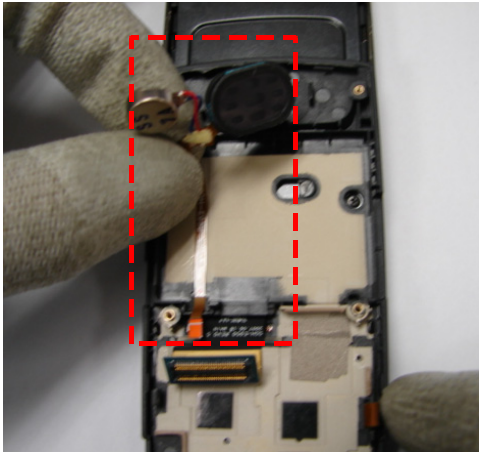
- 1) Detach SLIDE FPCB from MAIN PBA.
- ※ **caution**
- 1) When disassembling SLIDE FPCB, be careful not to damage PBA and SLIDE FPCB.

10



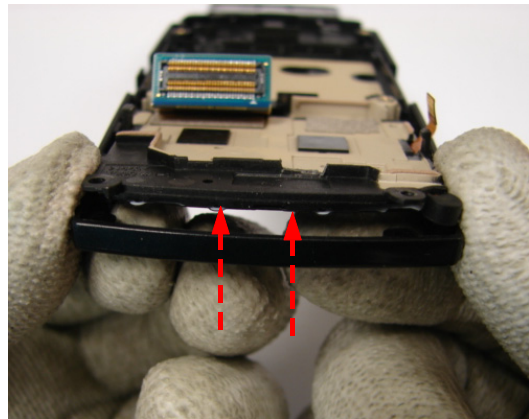
- 1) Remove BATTERY SHEET.
- ※ **caution**
- 1) When removing BATTERY SHEET, be careful not to damage at other parts.

11



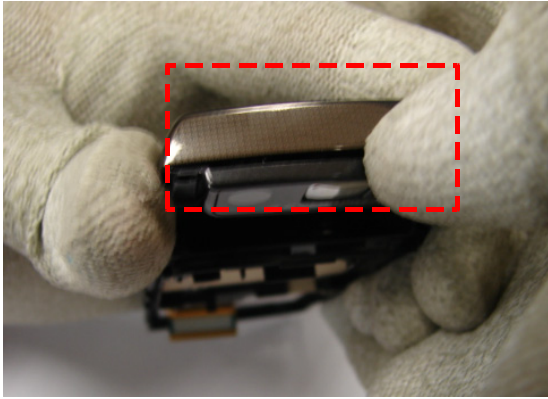
- 1) Detach SPK & MOTOR from FRONT, and remove FPCB carefully.
- ※ **caution**
- 1) Be careful not to damage SPK & MOTOR FPCB.

12



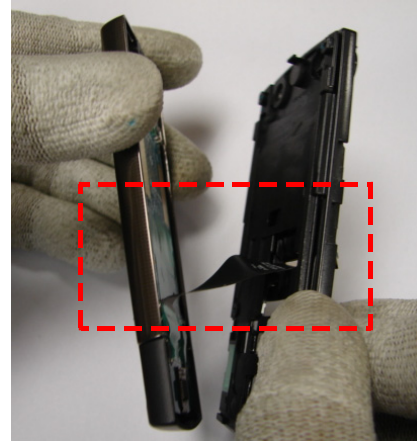
- 1) Pull the bottom of KEY BRACKET and detach KEY BRACKET from FRONT.
- ※ **caution**
- 1) Be careful not to damage MIC.

13



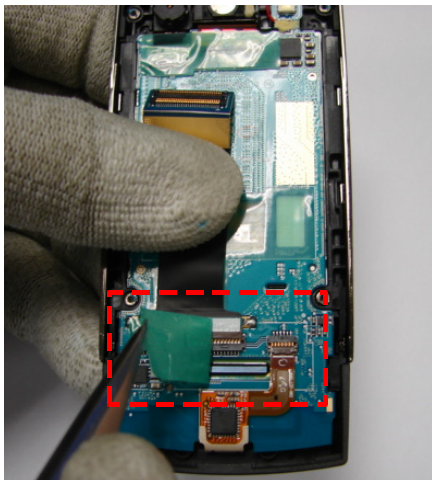
- 1) Disjoint the hook of LOWER like picture.
- ※ **caution**
- 1) Be careful not to be scratched on the SET.

14



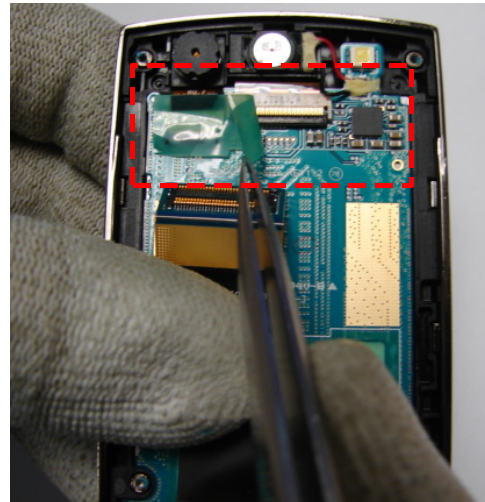
- 1) Close FRONT SLIDE, and pull out SLIDE FPCB from FRONT HOLE.
- ※ **caution**
- 1) Be careful not to damage SLIDE FPCB.
- 2) Close FRONT SLIDE, and pull out SLIDE FPCB

15



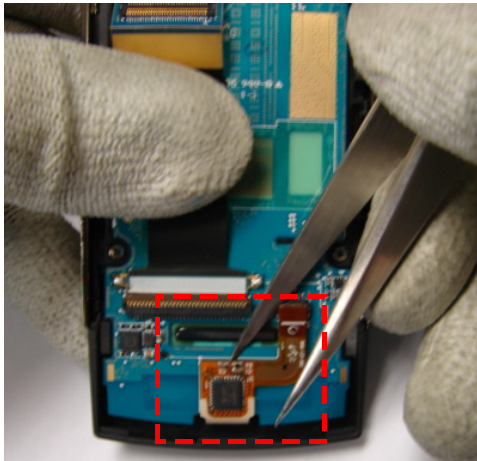
- 1) Remove the green insulating tape on SLIDE FPCB CONNECTOR of SUB PBA.
- ※ **caution**
- 1) Be careful not to damage the connector.

16



- 1) Remove the green insulating tape on MAIN LCD CONNECTOR of SUB PBA.
- ※ **caution**
- 1) Be careful not to damage the connector.

17

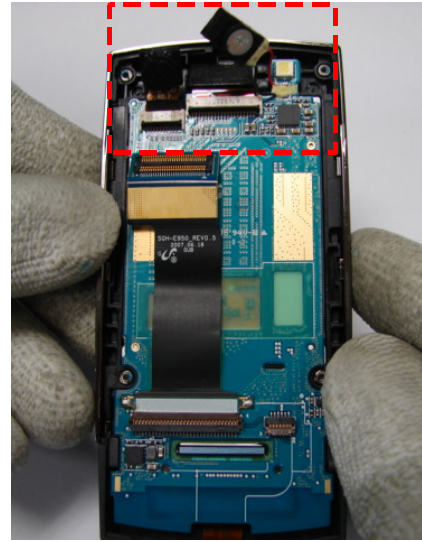


- 1) Detach TOUCH KEY FPCB from the connector.
- 2) Detach TOUCH KEY from SUB PCB.

※ **caution**

- 1) Be careful not to damage TOUCH KEY FPCB.

18

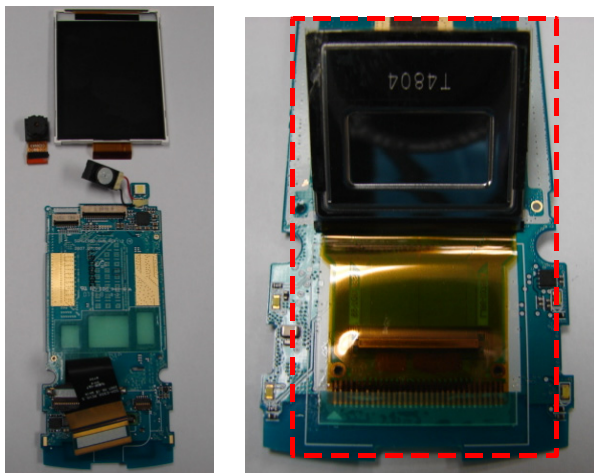


- 1) Detach CAMERA & RECEIVER from UPPER.

※ **caution**

- 1) Be careful not to damage TOUCH KEY FPCB.

19

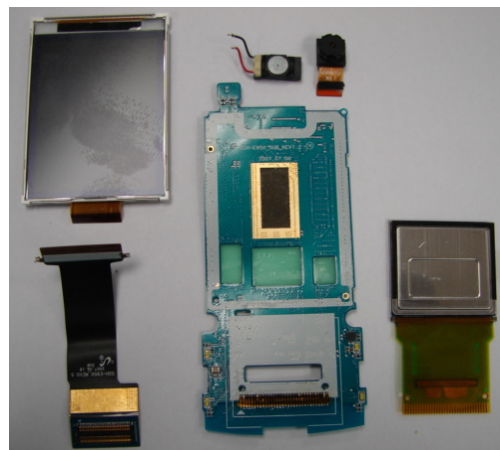


- 1) Detach MAIN LCD and CAMERA from SUB PBA.
- 2) Detach SUB LCD from SUB PBA.

※ **caution**

- 1) When detaching SUB LCD, be careful not to be scratched on the LCD.

20

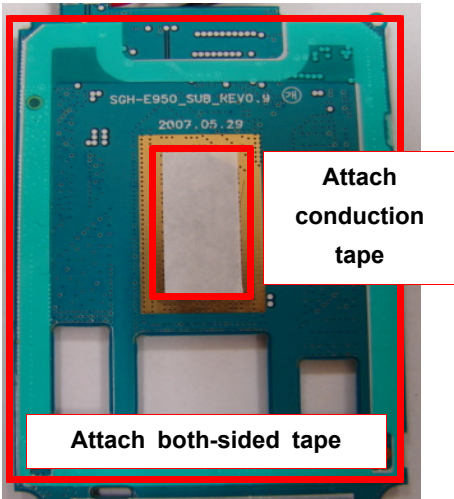
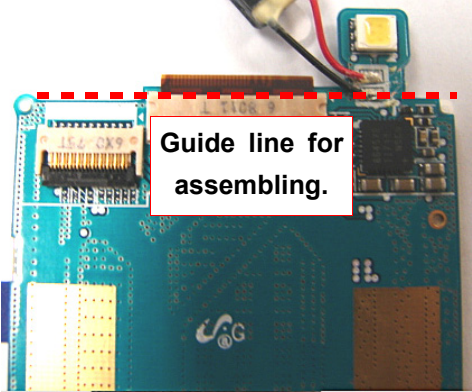
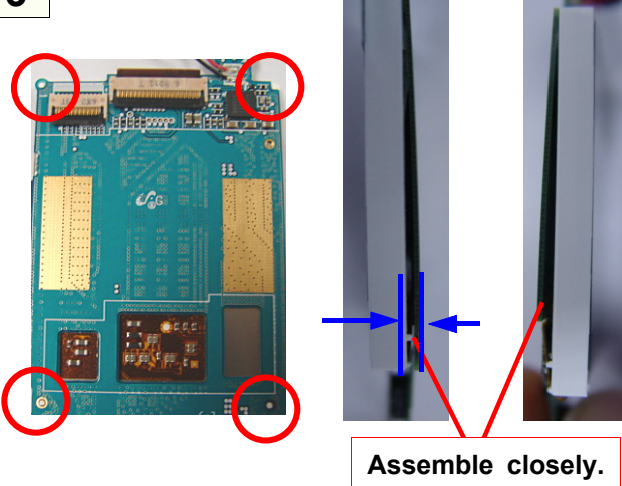
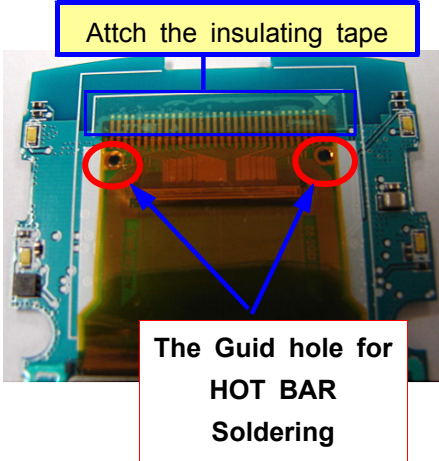


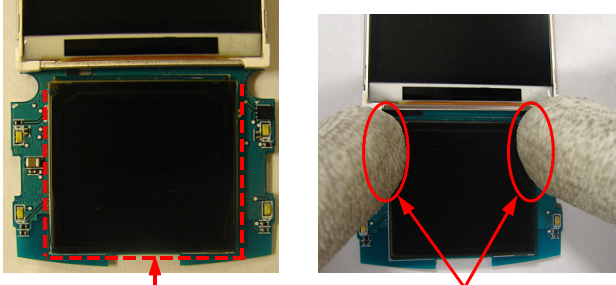
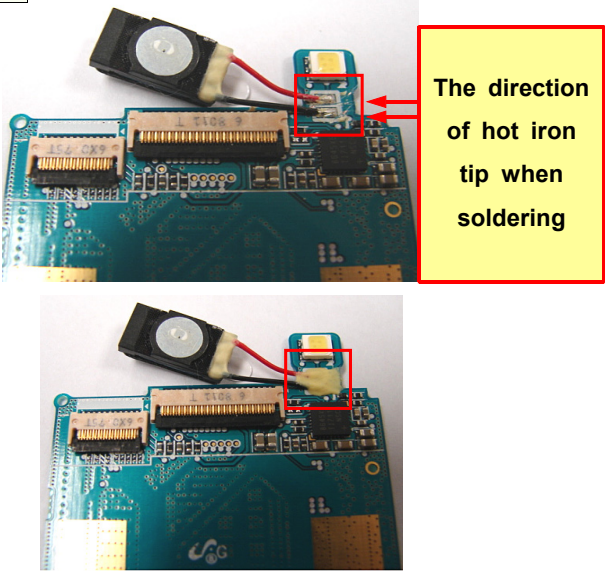
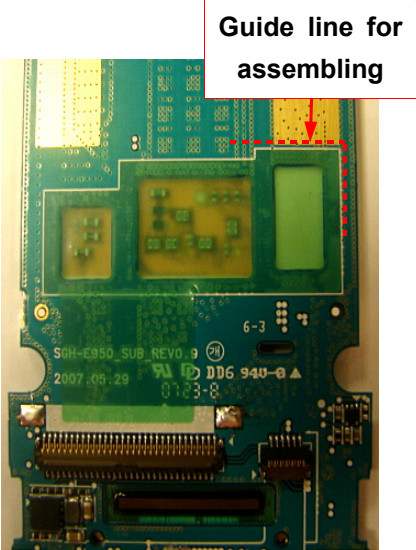
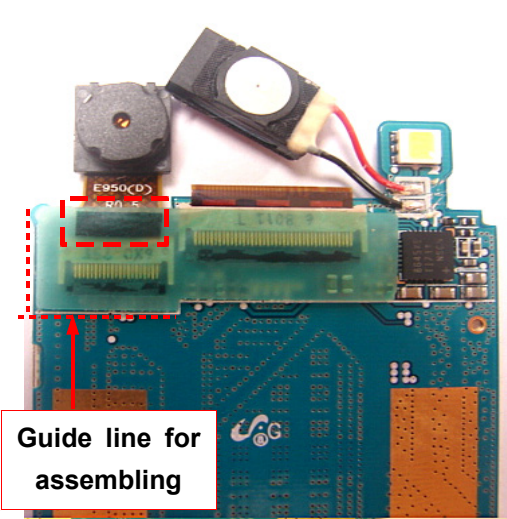
- 1) Unsolder RECEIVER & SLIDE FPCB in SUB PBA.
- 2) Unsolder HOT BAR of SUB LCD in SUB PBA.

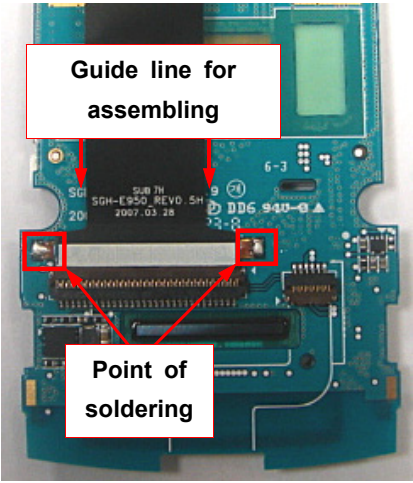
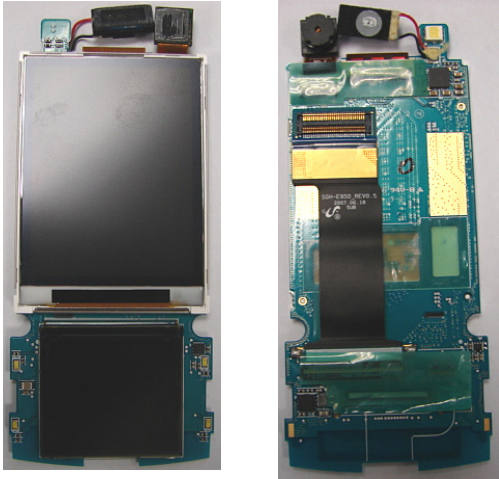

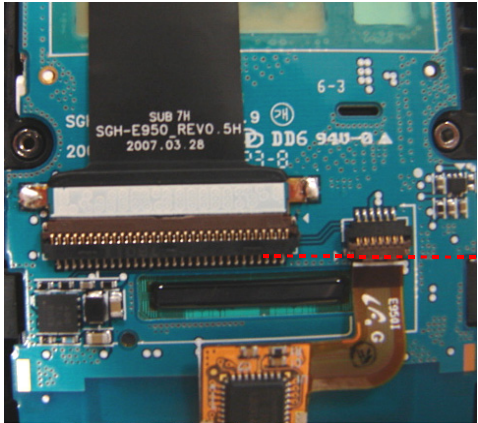
※ **caution**

- 1) When detach HOT BAR, be careful.

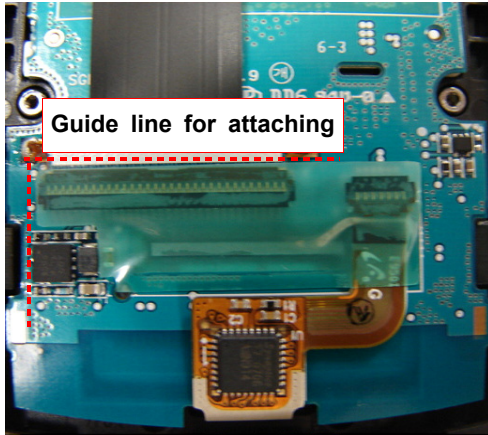
7-2. Assembly

<p>1</p> 	<p>2</p> 
<p>1) Attach the conduction tape. 2) Attach the both-sided tape.</p> <p>※ caution</p> <p>1) Attach the tape in the guide line.</p>	<p>1) Insert MAIN LCD FPCB into the connector according to guide line.</p> <p>※ caution</p> <p>1) Insert LCD FPCB according to guide line.</p>
<p>3</p> 	<p>4</p> 
<p>1) Detach release papers of the conduction tape and the both-sided tape. 2) Attach MAIN LCD to SUB PBA closely according to GUIDE RIB.</p> <p>※ caution</p> <p>1) Attach MAIN LCD to SUB PBA closely according to GUIDE RIB.</p>	<p>1) Put SUB LCD FPCB according to guide hole. 2) Solder SUB LCD FPCB using HOT BAR JIG. 3) Atch the insulating tape according to guide line of the HOT BAR soldering part.</p> <p>※ caution</p> <p>1) Put SUB LCD FPCB according to guide hole. 2) Atch the insulating tape according to guide line.</p>

<p>5</p> 	<p>6</p> 
<p>1) Attach SUB LCD according to guide line safely. 2) Press the top of SUB LCD softly like picture.</p> <p>※ caution</p> <p>1) Attach SUB LCD according to guide line safely.</p>	<p>1) Solder RECIVER WIRE like the picture. 2) BONDING there like the picture.</p> <p>※ caution</p> <p>1) Don't damage MAIN LCD FPCB when soldering.</p>
<p>7</p> 	<p>8</p> 
<p>1) Attach the green insulating tape according to guide line on SUB PBA.</p> <p>※ caution</p> <p>1) Attach the insulating tape according to guide line.</p>	<p>1) Attach CAMERA SPONGE like picture. 2) Attach the insulating tape on LCD FPCB CONNECTOR according to guide line.</p> <p>※ caution</p> <p>1) Attach the insulating tape according to guide line.</p>

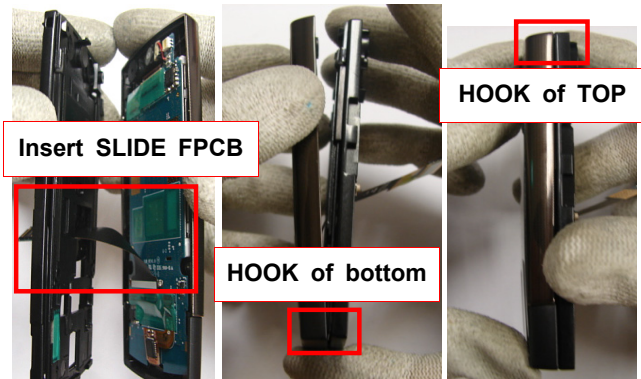
<p>9</p>  <p>Diagram showing the main board assembly. A red box labeled "Guide line for assembling" points to a horizontal line on the board. Another red box labeled "Point of soldering" points to two specific locations on the board. The board has text: "SUB 7H", "SGH-E950_REV0.5H", "2007.03.28", and "DD6 940-0".</p>	<p>10</p>  <p>Two photographs showing the rear case assembly. The left photo shows the rear case being attached to the main board. The right photo shows the rear case fully assembled on the main board.</p>
<p>1) Assemble INTENNA. 2) Drive Screw on PBA. ※ caution 1) Be careful not to get a damage of PBA. 2) Push Intenna carefully to be hooked.</p>	<p>1) Assemble the Rear case from upper hooker. 2) Assemble the Rear case like a picture. ※ caution 1) Be careful not to get a damage of PBA.</p>
<p>11</p>  <p>Photograph of the rear case assembly. A red box labeled "CAMERA, RECIVER, FLASH LED" points to the camera lens, microphone, and flash LED on the rear case. The main board is visible below.</p>	<p>12</p>  <p>Close-up photograph of the main board connector area. A red dashed line indicates the guide line for the connector. The board has text: "SUB 7H", "SGH-E950_REV0.5H", "2007.03.28", and "DD6 940-0".</p>
<p>1) Insert SUB PBA ASS'Y in UPPER safely. ※ caution 1) Be careful not to be scratched on the SET.</p>	<p>1) Insert TOUCH KEY FPCB into the connector. ※ caution 1) Insert FPCB into the connector according to the guide line.</p>

13



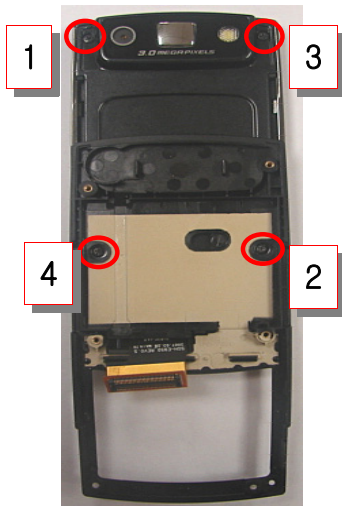
- 1) Attach the insulating tape of SLIDE FPCB according to the guide line.
- ※ **caution**
1) Attach the insulating tape according to guide line.

14



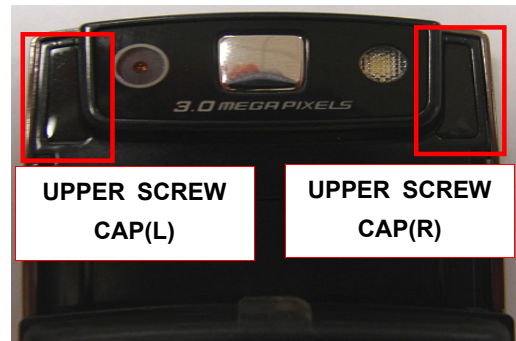
- 1) Insert SLIDE FPCB into the hole of the FRONT SLIDE which is closed.
- 2) Fit HOOK of FRONT's bottom part in UPPER and fit HOOK of FRONT's top part in UPPER.
- ※ **caution**
1) Be careful not to be scratched on SET.

15



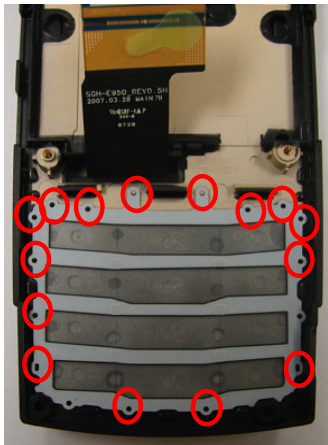
- 1) Screw 4 points of FRONT.
- ※ **caution**
1) Be careful not to be scratched on SET.

16



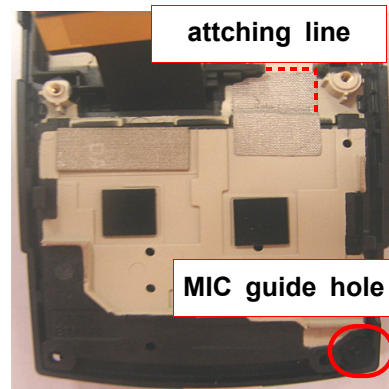
- 1) Attach SCREW CAP of FRONT.
- ※ **caution**
1) Be careful not to be scratched on SET.

17



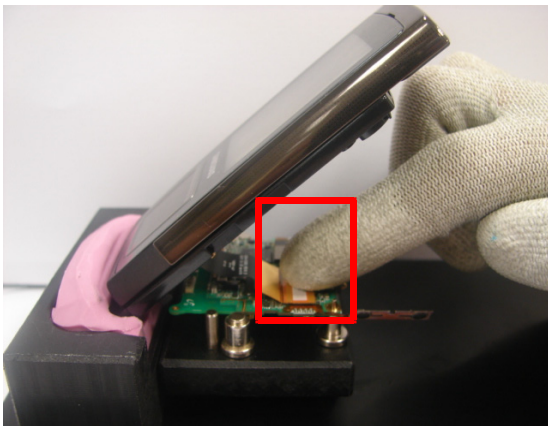
- 1) Put the KEYPAD according to the KEYPAD GUIDE HOLE.
- ※ **caution**
- 1) Be careful that the KEYPAD exceeds the KEYPAD GUIDE HOLE.

18



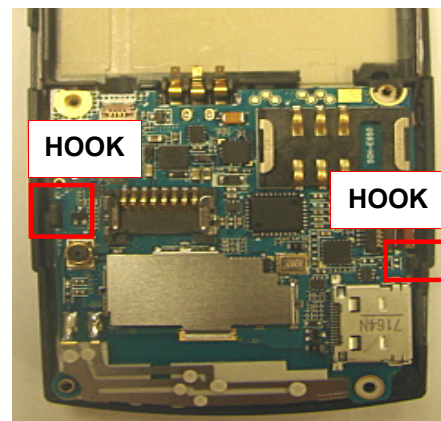
- 1) Assemble the KEY ASS'Y to the FRONT.
- 2) Insert the MIC of the KEY ASS'Y to the MIC GUIDE HOLE.
- ※ **caution**
- 1) Be careful that MIC exceeds the MIC GUIDE HOLE.

19



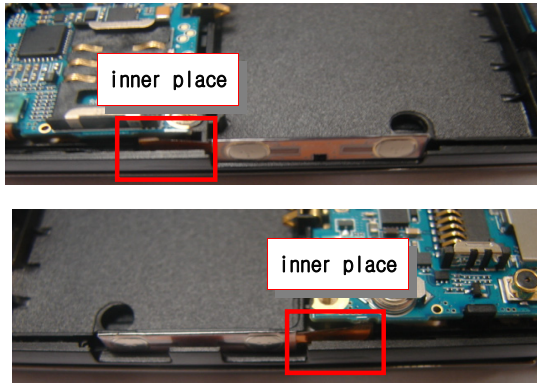
- 1) Assemble the SLIDE FPCB of the SLIDE ASS'Y to the MAIN PBA.
- ※ **caution**
- 1) Be careful not to be scratched on the SET.

20



- 1) Assemble the both HOOK of the FRONT to the MAIN PBA.
- ※ **caution**
- 1) Be careful not to be broken the HOOK.

21



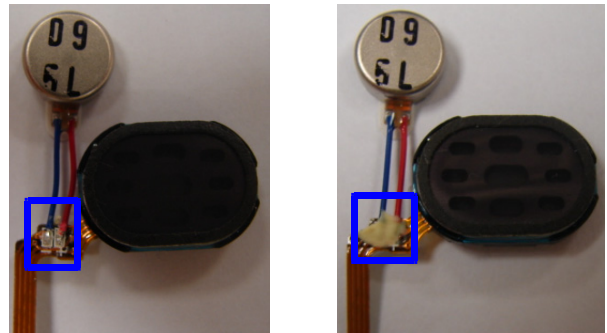
- 1) Attach the CAMERA KEY and VOLUME KEY.
 ※ **caution**
 1) Be careful not to be damaged to the FPCB

23



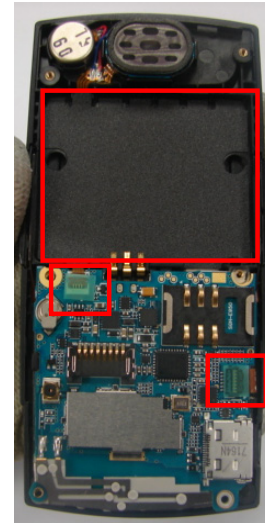
- 1) Attach the SPK and MOTOR.
- 2) Attach the FPCB to the Front GROOVE.
 ※ **caution**
- 1) When attaching the FPCB , Be careful not to be out of the guide groove.

22

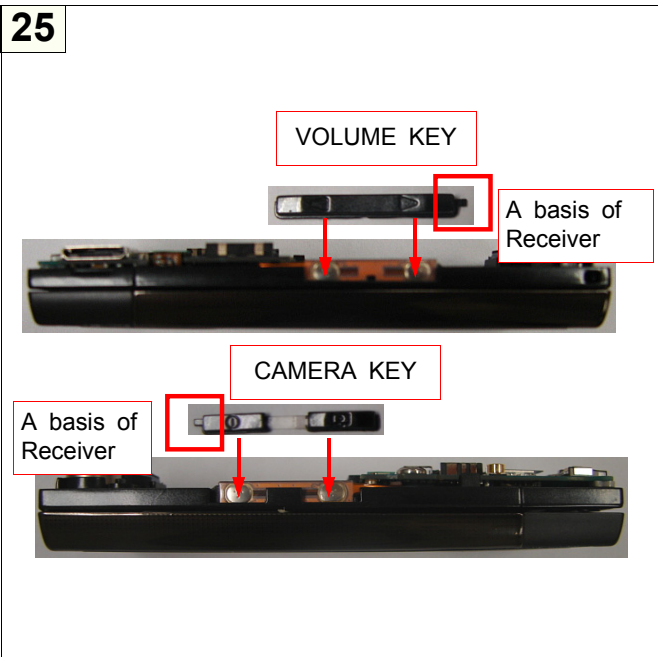


- 1) Soldering the Motor to the SPK FPCB.
- 2) Bonding to the soldering point.
 ※ **caution**
- 1) When soldering the MOTOR, Be careful not to be shorted the MOTOR wires.

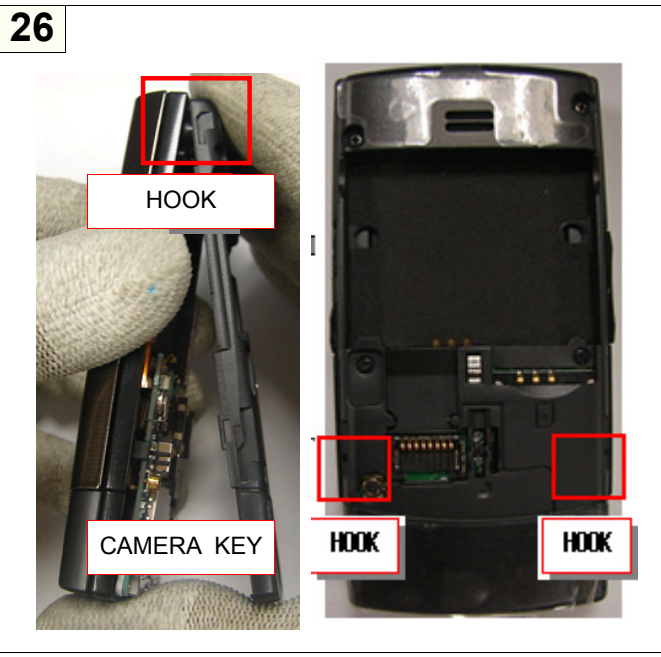
24



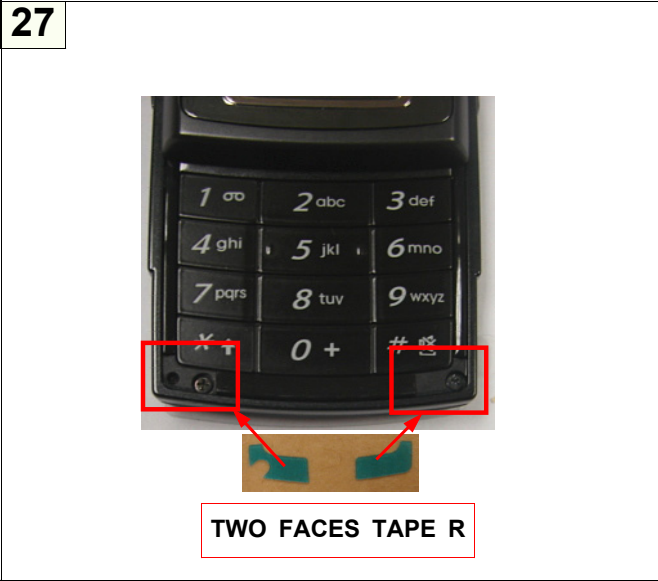
- 1) Assemble the SPK & MOTOR FPCB to the MAIN CONN.
- 2) Assemble the KEY PBA FPCB to the MAIN CONN.
- 3) Attach the BATTERY SHEET.
 ※ **caution**
- 1) When attaching the BATTERY SHEET, Be careful not to be out of attached place.



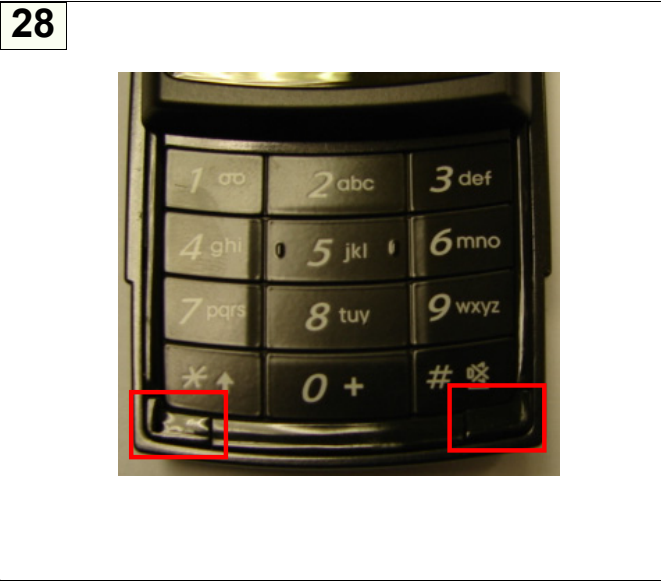
- 1) Assemble the VOLUME KEY and CAMERA KEY.
 ※ **caution**
- 1) Assemble the SET in proportion to the projection part of SIDE KEY.



- 1) Insert the upper HOOK of REAR
- 2) Insert the lower HOOK of REAR and assemble.
 ※ **caution**
- 1) Be careful not to be scratched on the SET.

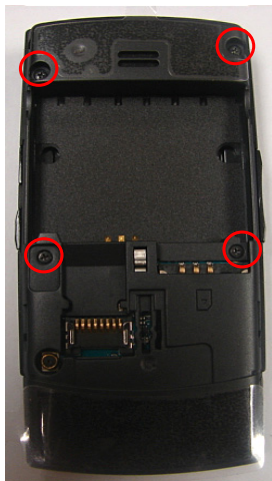


- 1) Attach the SCREW TWO FACES TAPE to the FRONT BOTTOM.
 ※ **caution**
- 1) Be careful not to be scratched on the SET.



- 1) Attach the SCREW CAP to the FRONT BOTTOM.
 ※ **caution**
- 1) Be careful not to be scratched on the SET.

29



1) Screw 4 points of the REAR.

※ **caution**

1) Be careful not to be scratched on the SET.