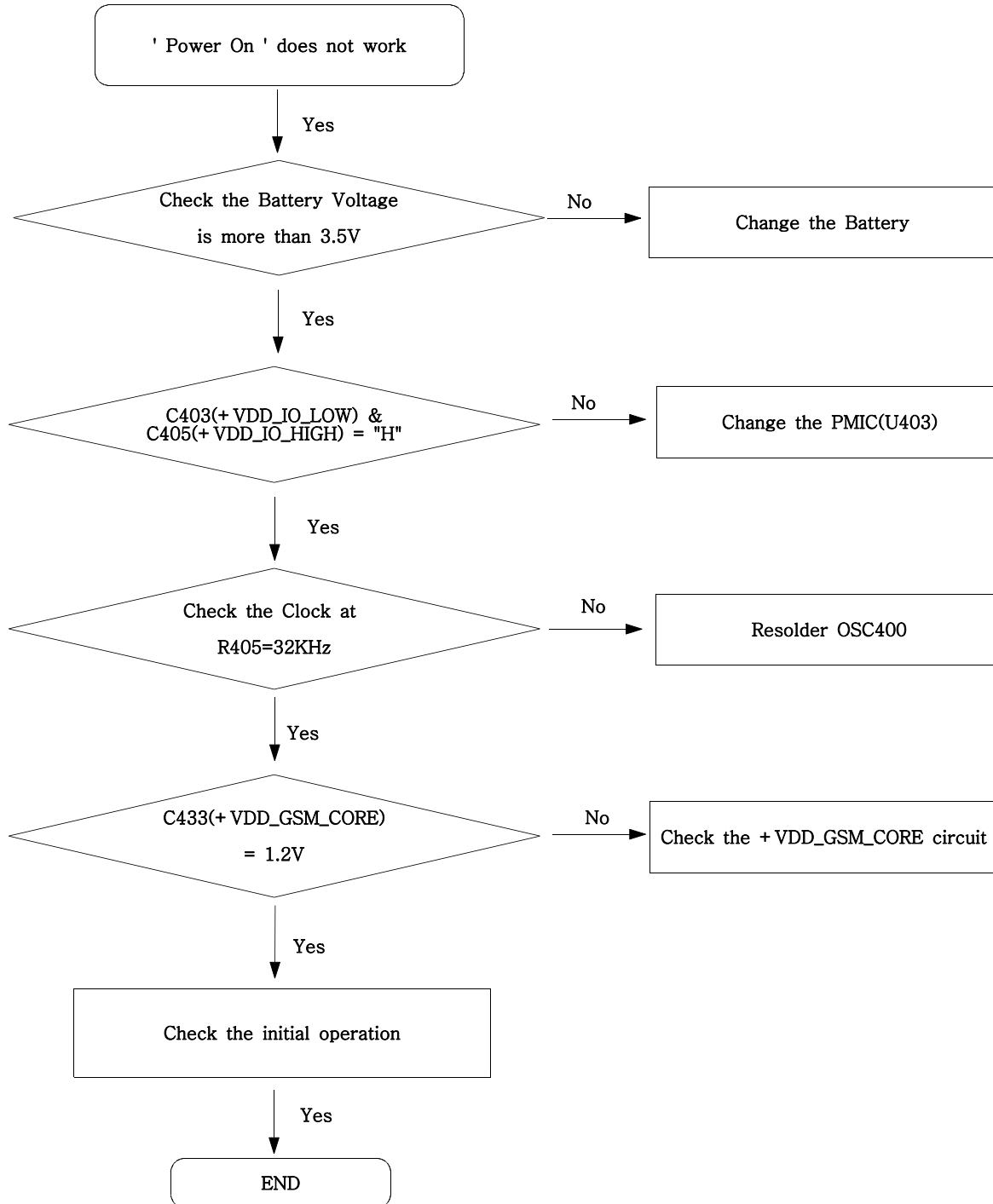


---

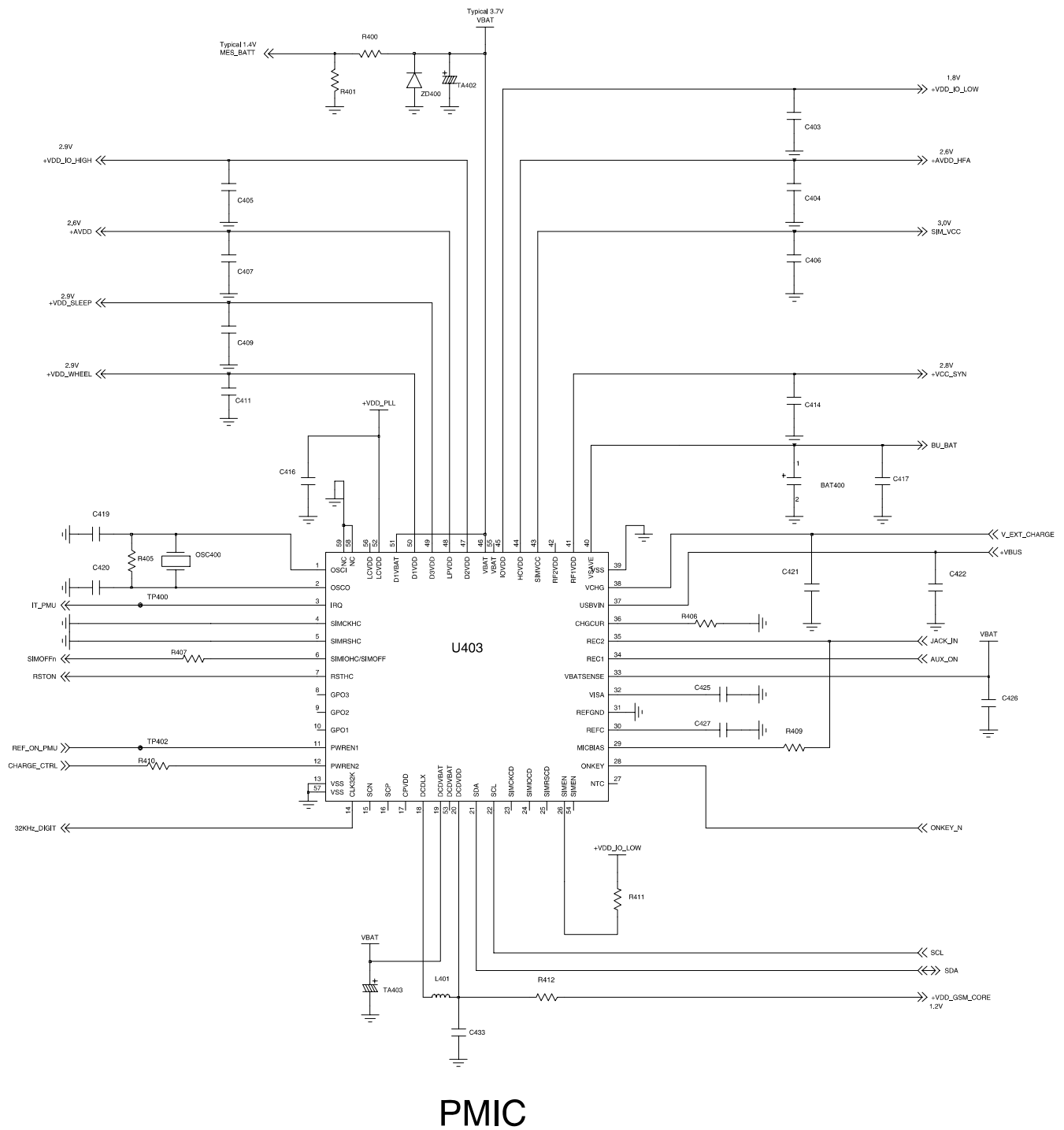
## 9. Flow Chart of Troubleshooting

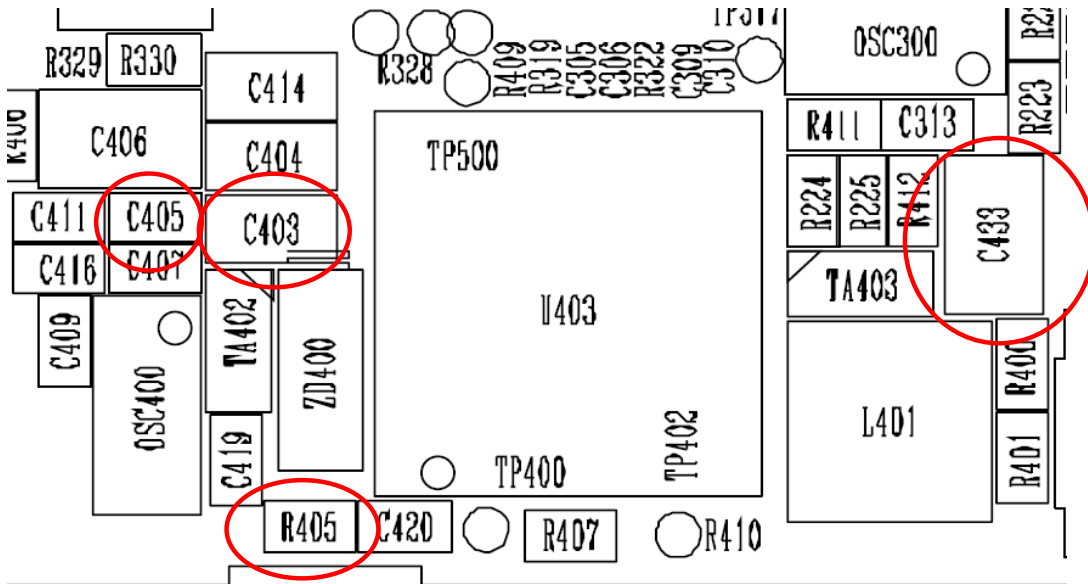
---

### 9-1. Power On

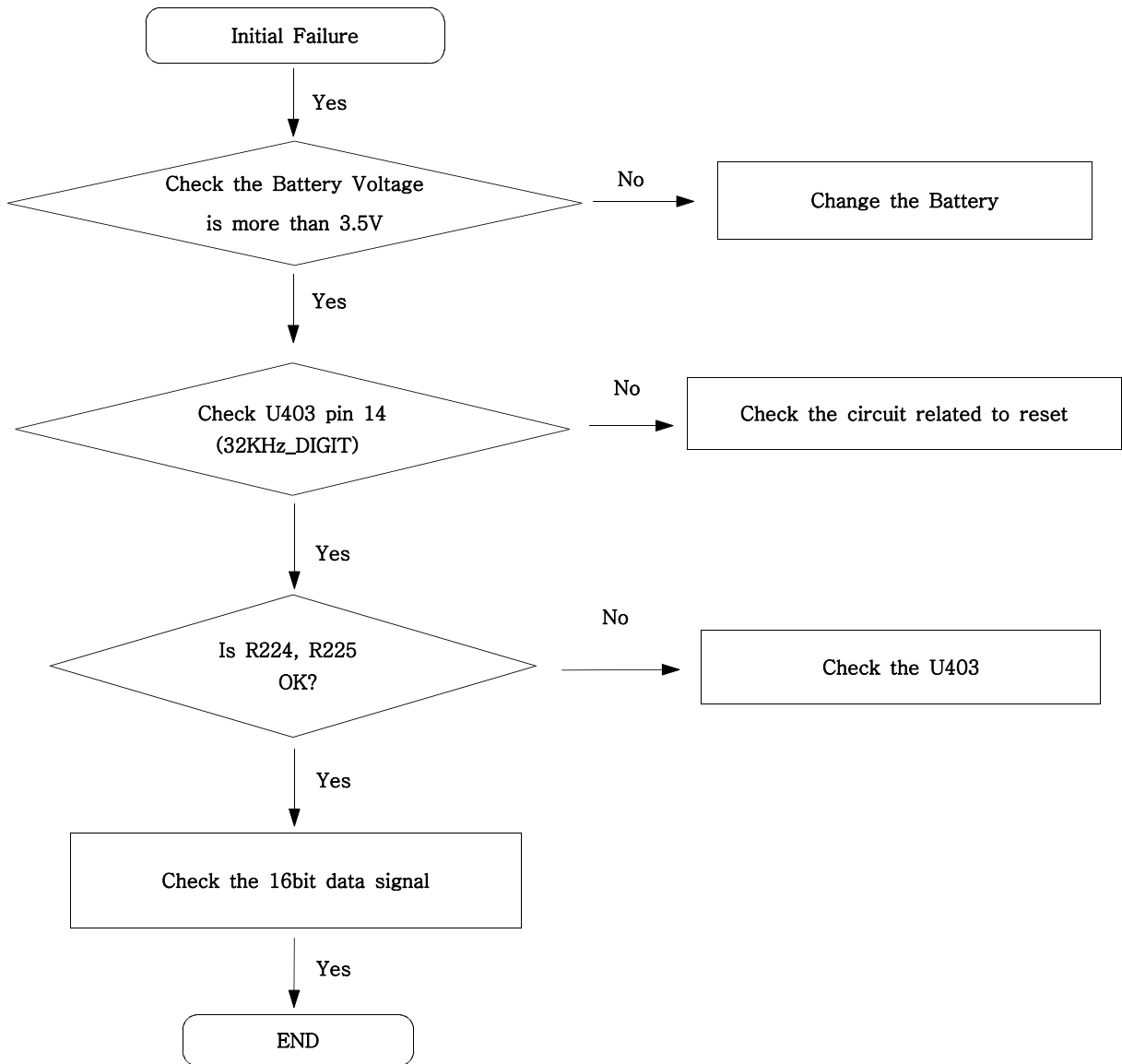


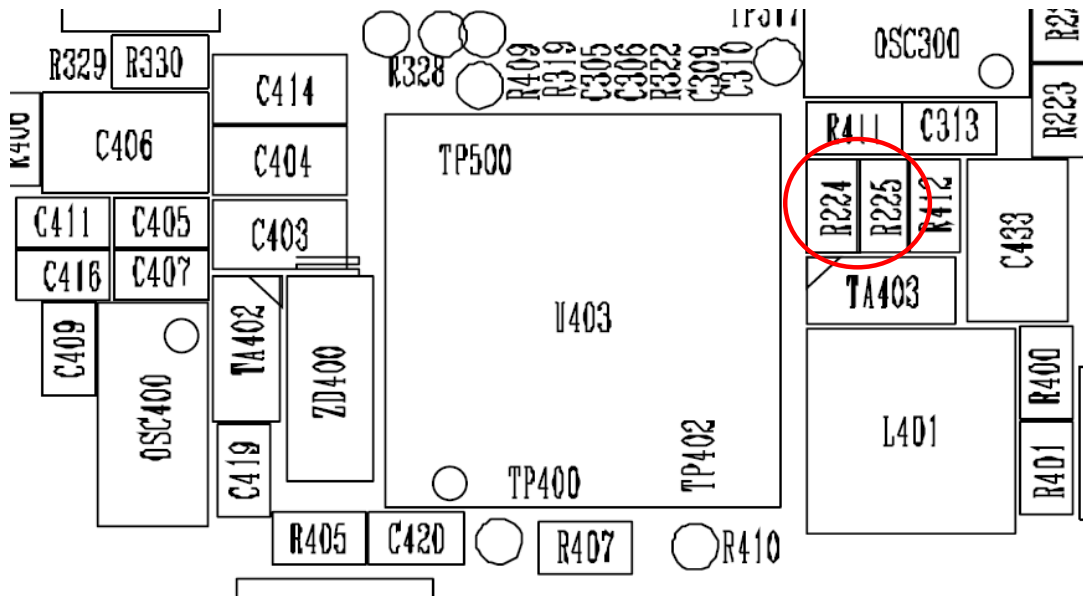
# Flow Chart of Troubleshooting



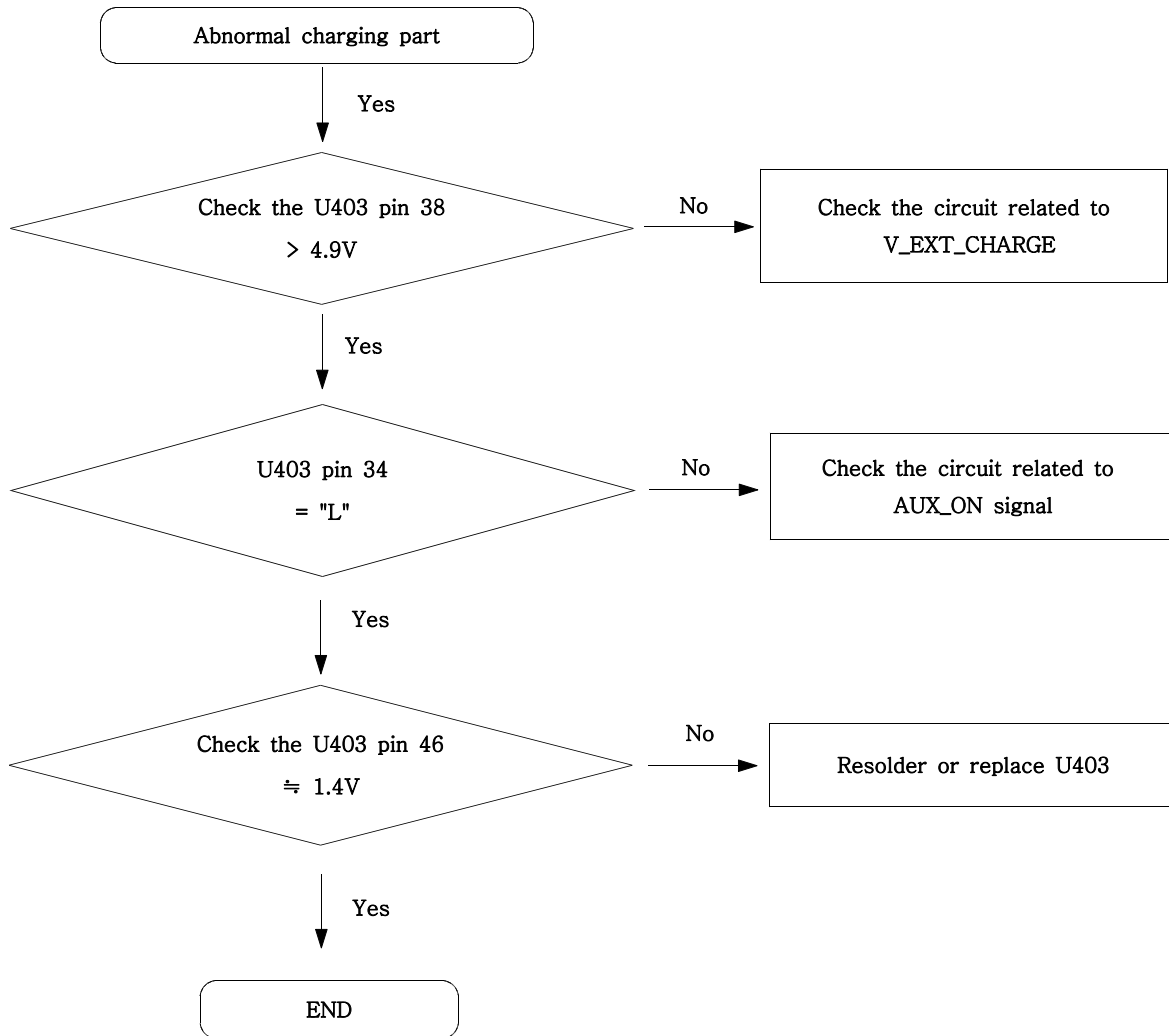


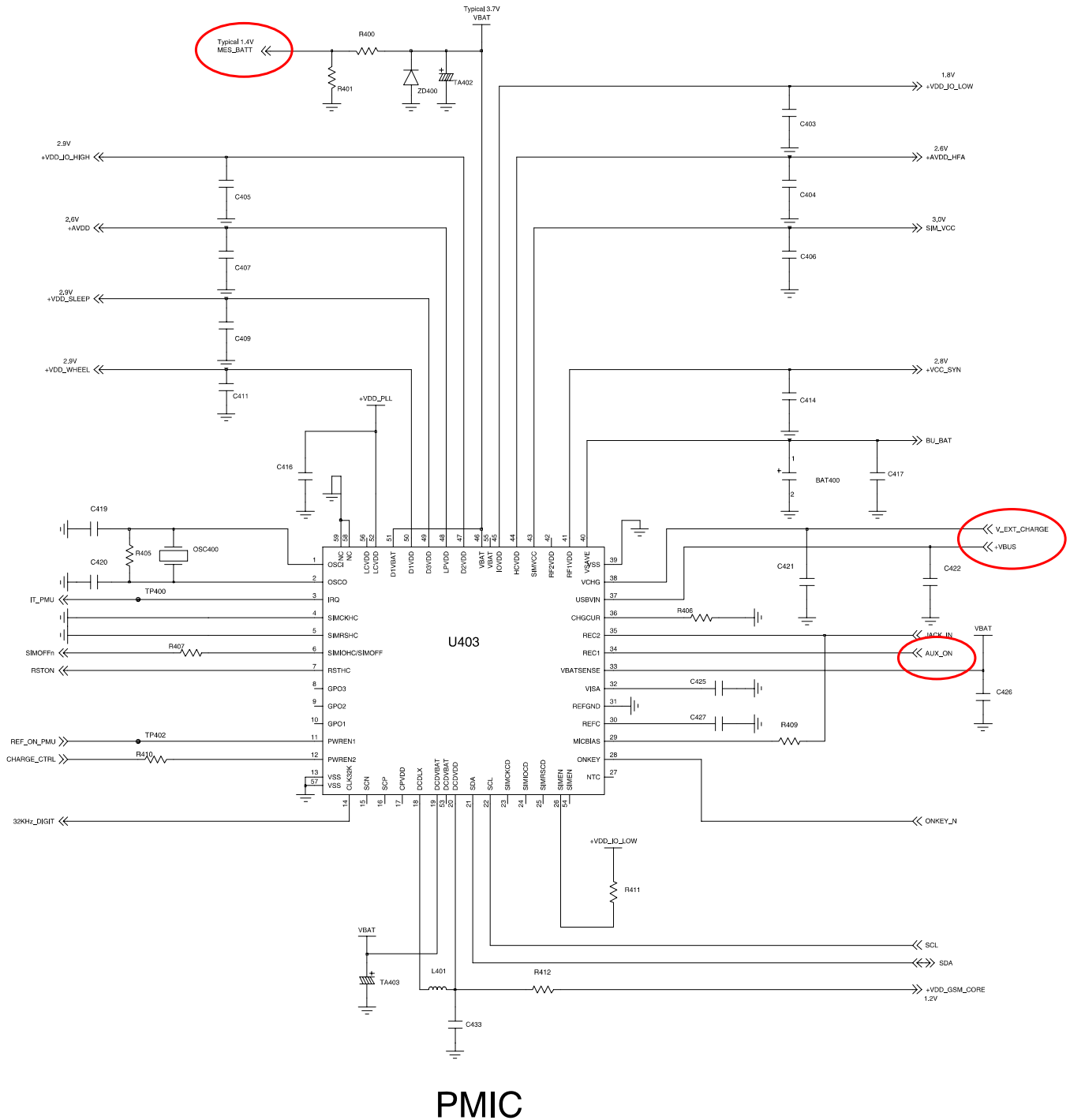
## 9-2. Initial



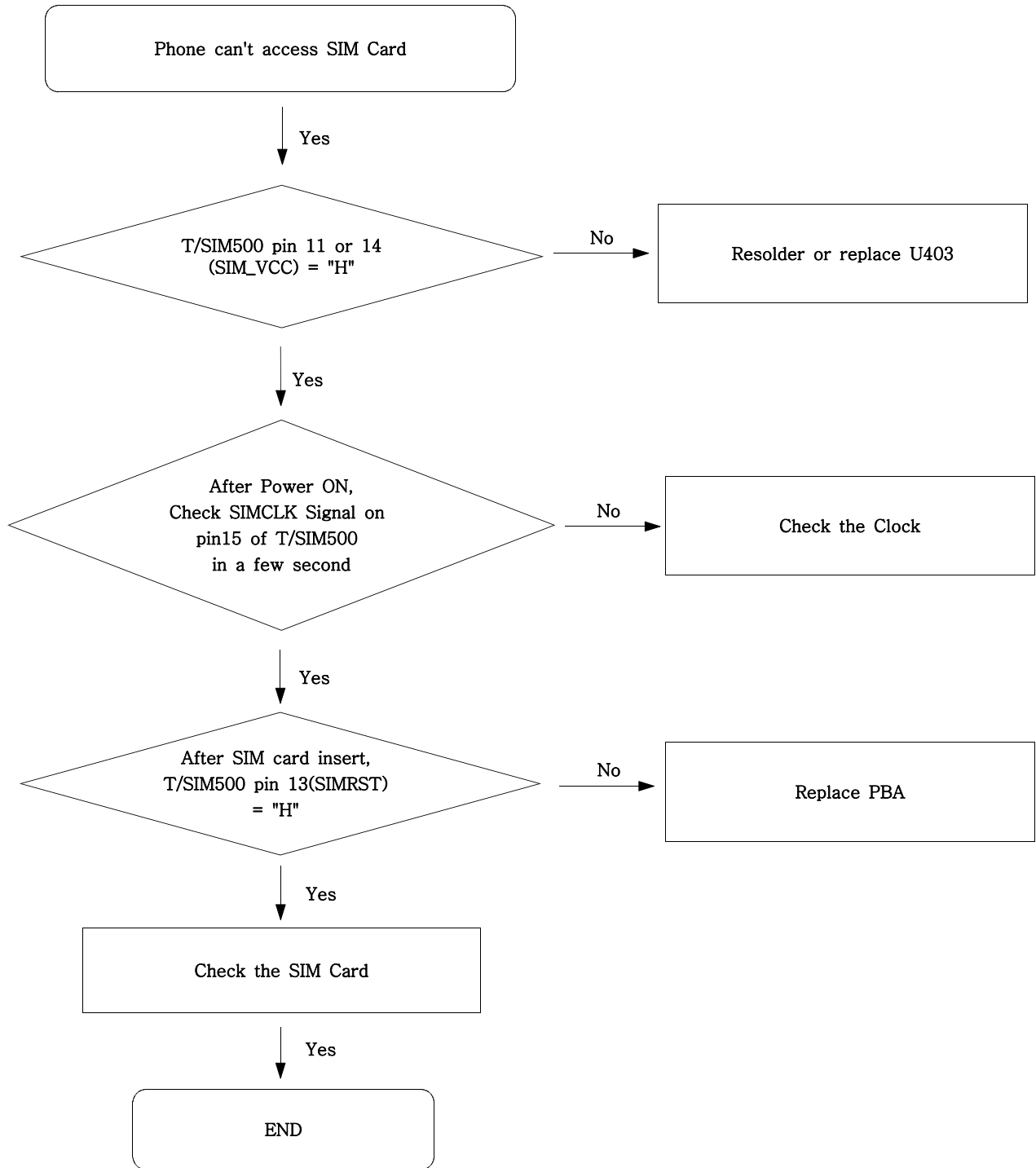


### 9-3. Charging Part

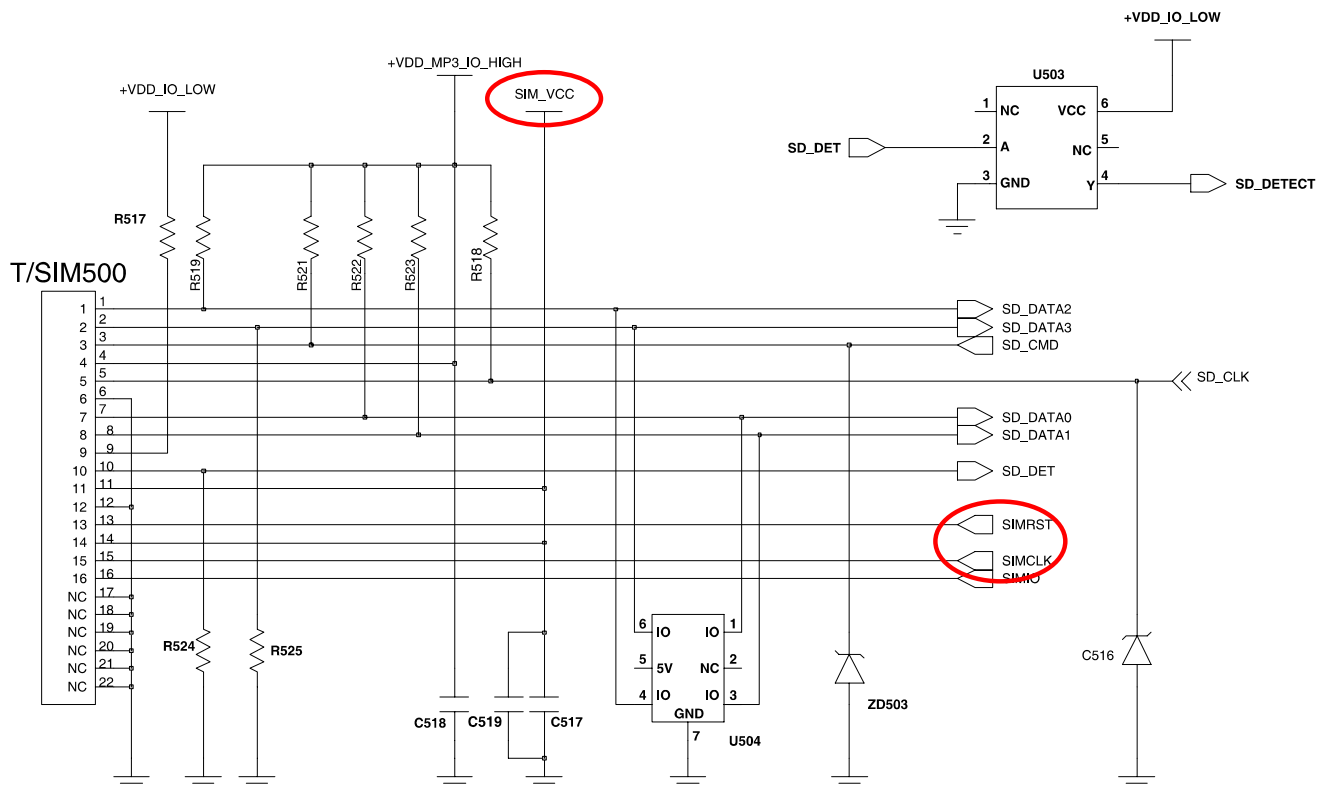




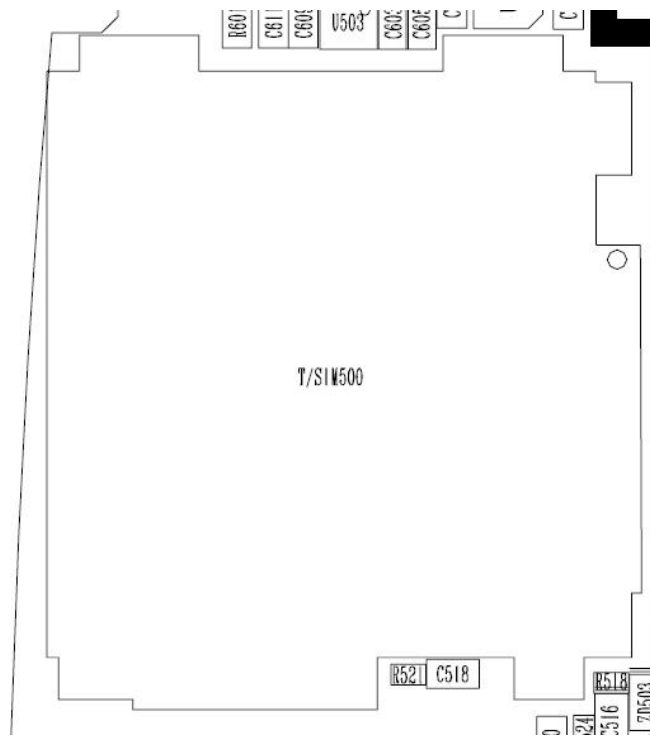
9-4. Sim Part



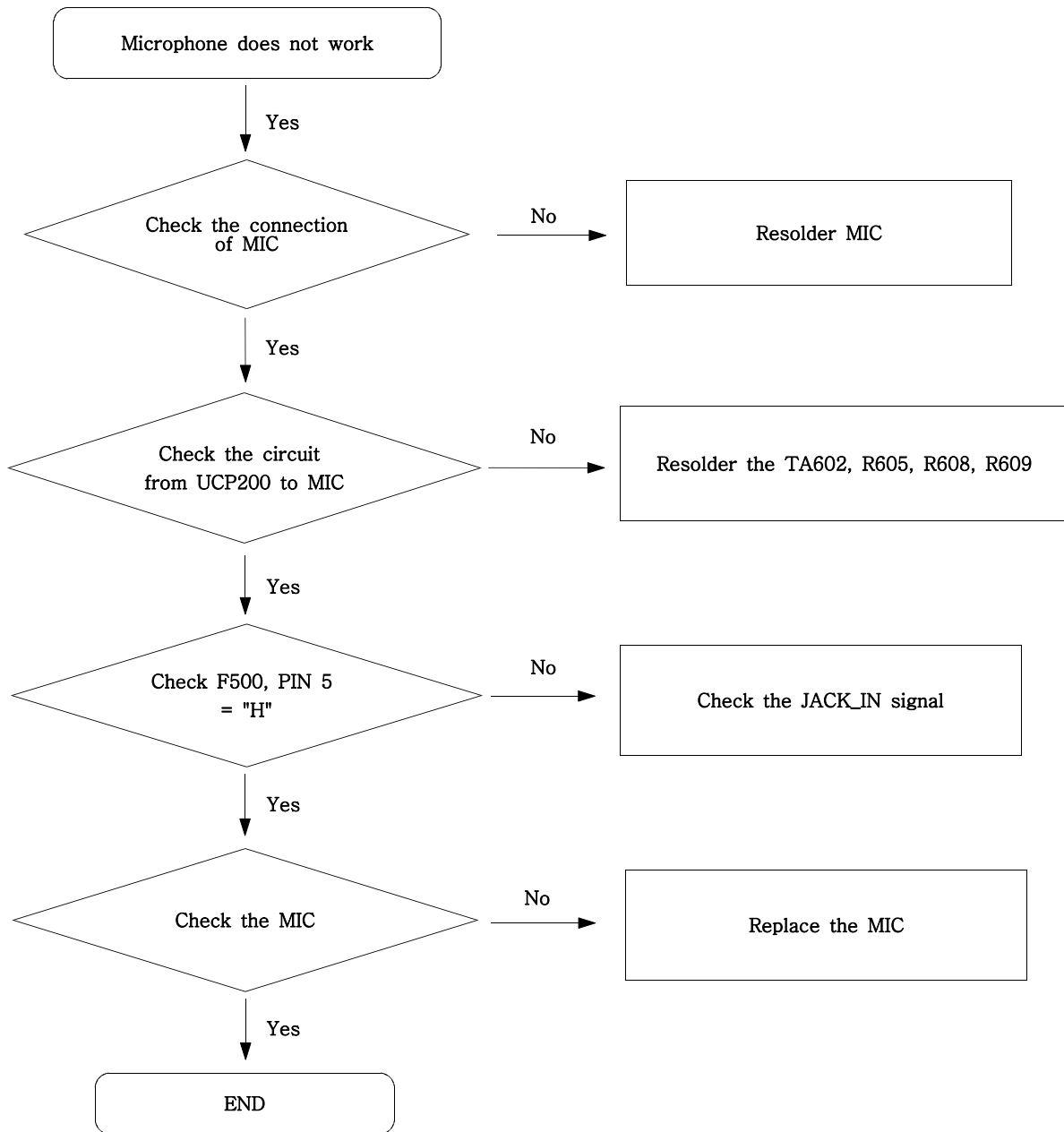


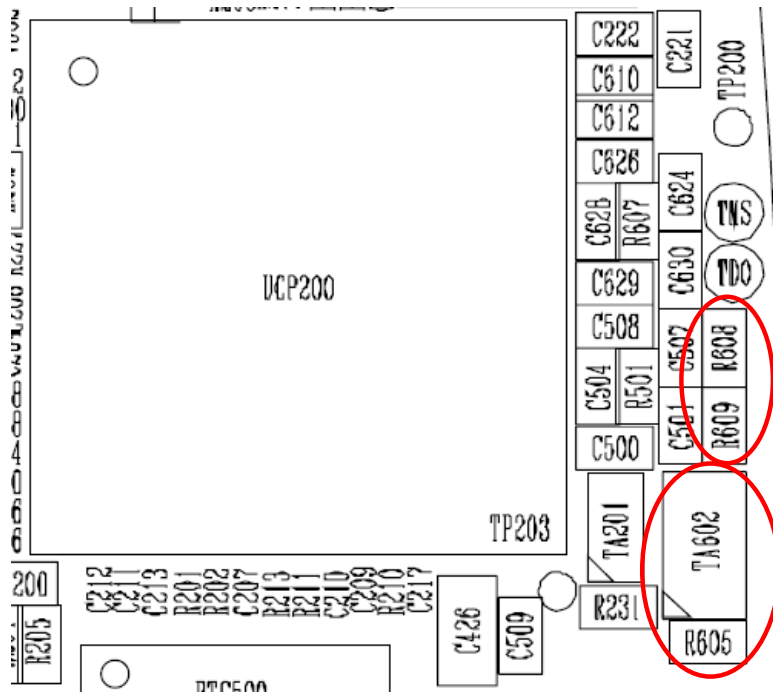
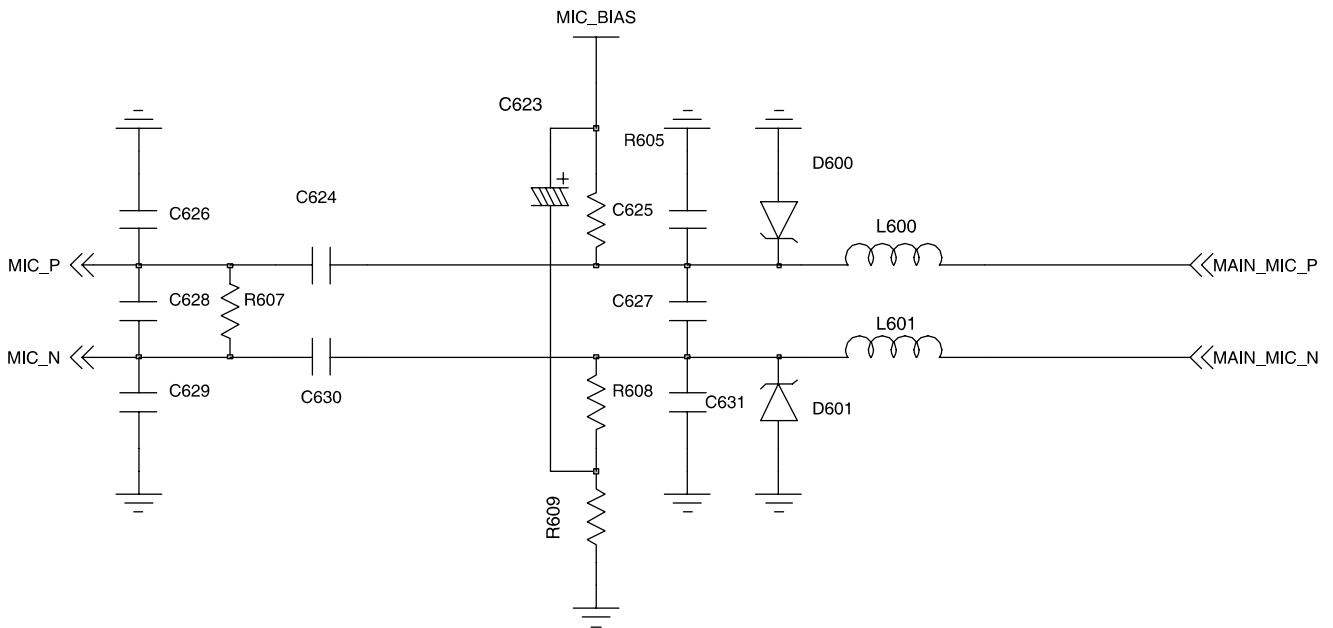


T\_FLASH & SIM

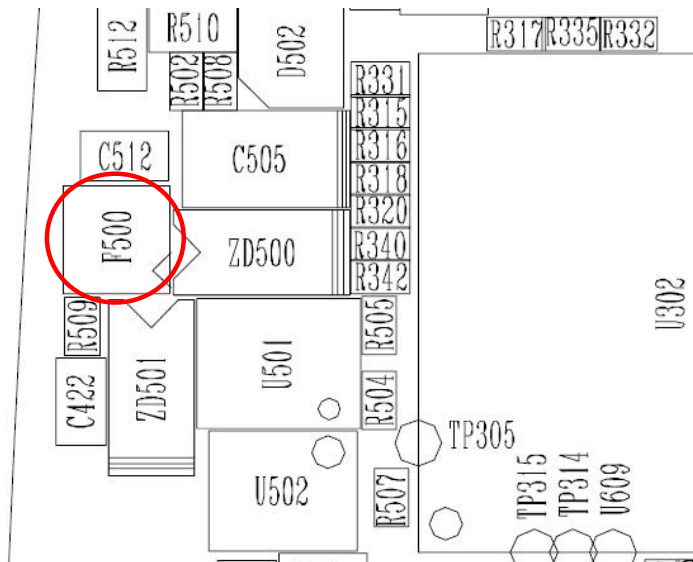
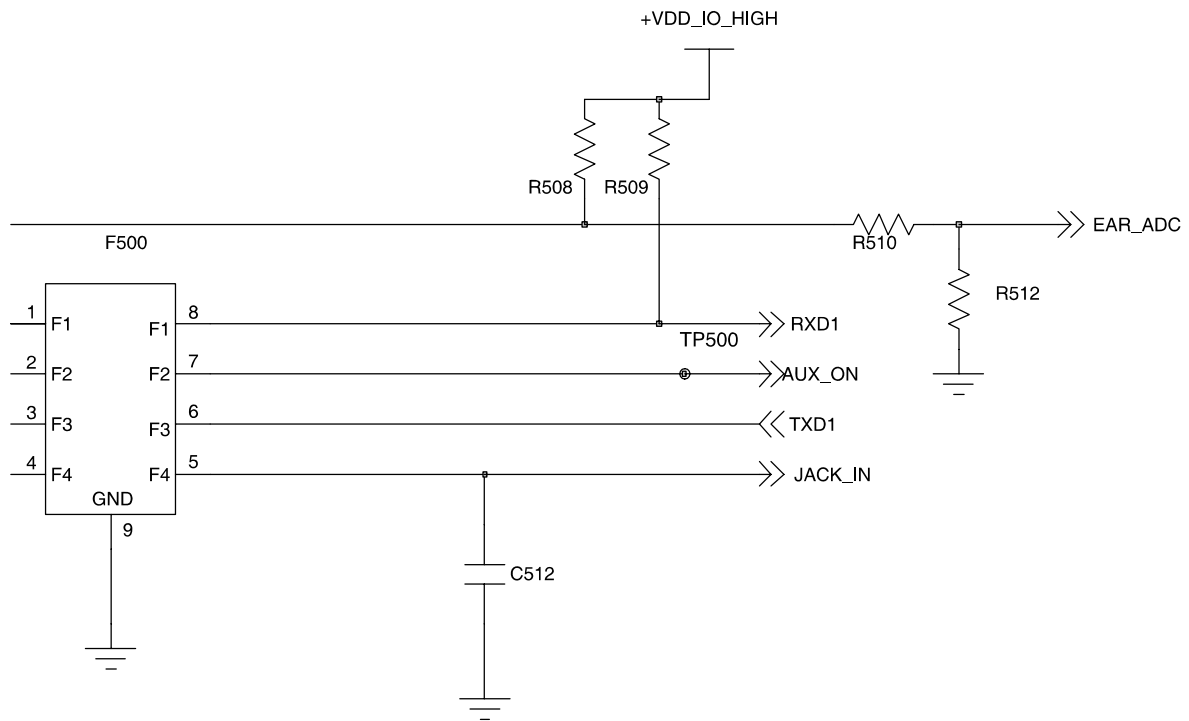


### 9-5. Microphone Part

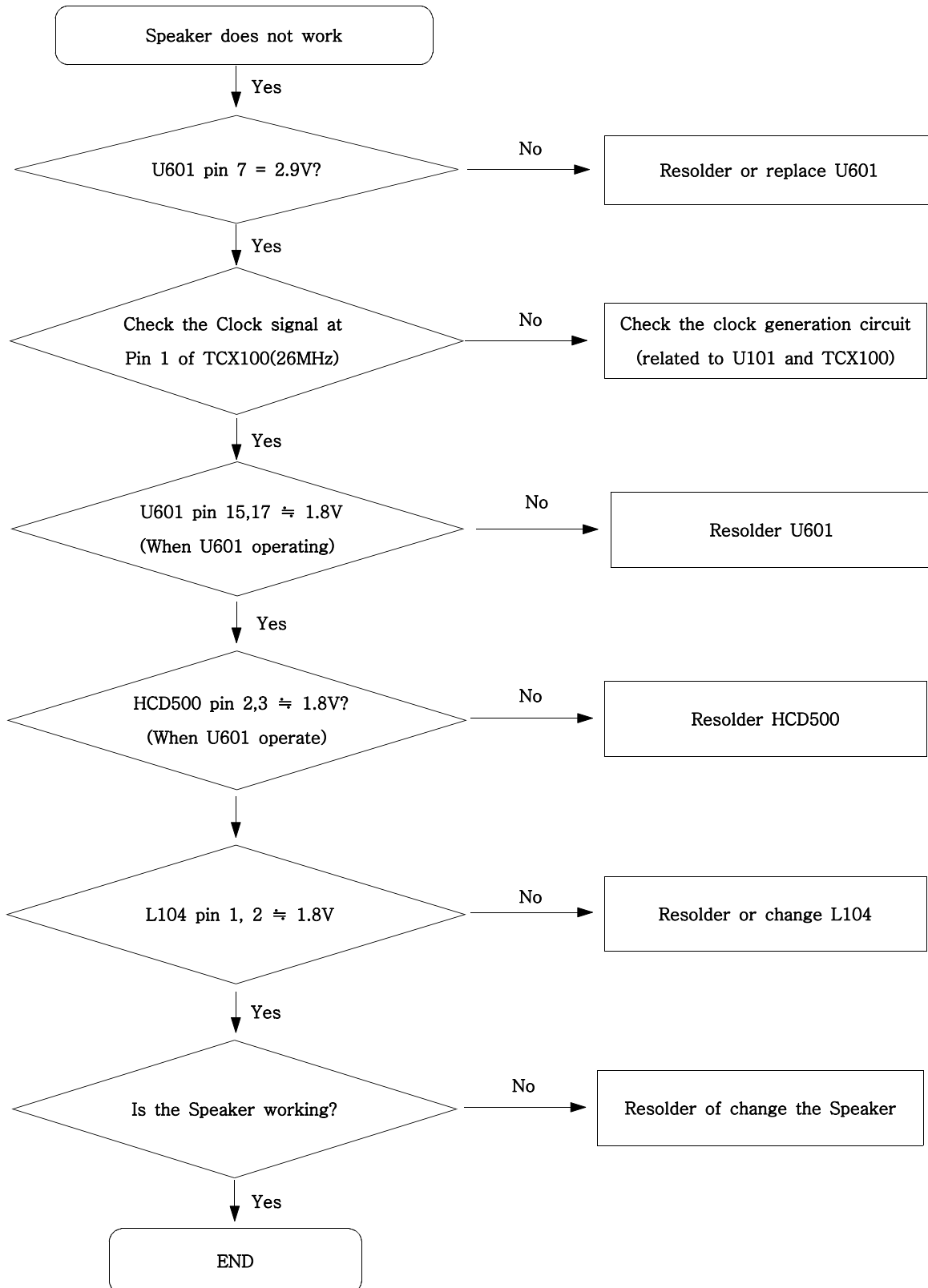


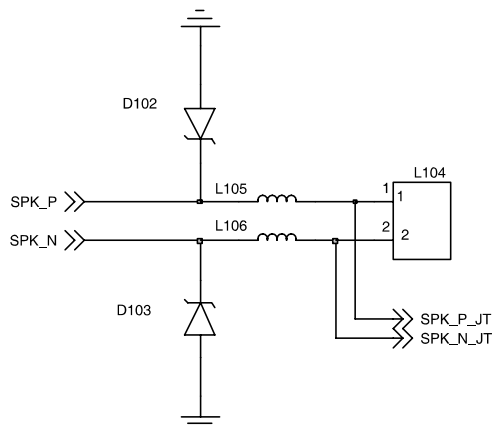
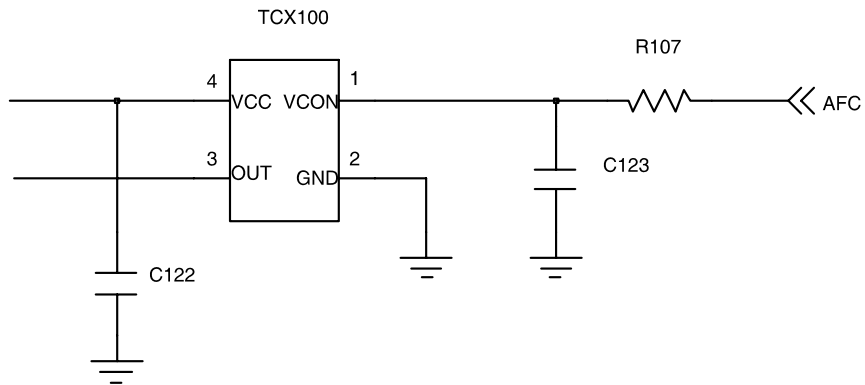
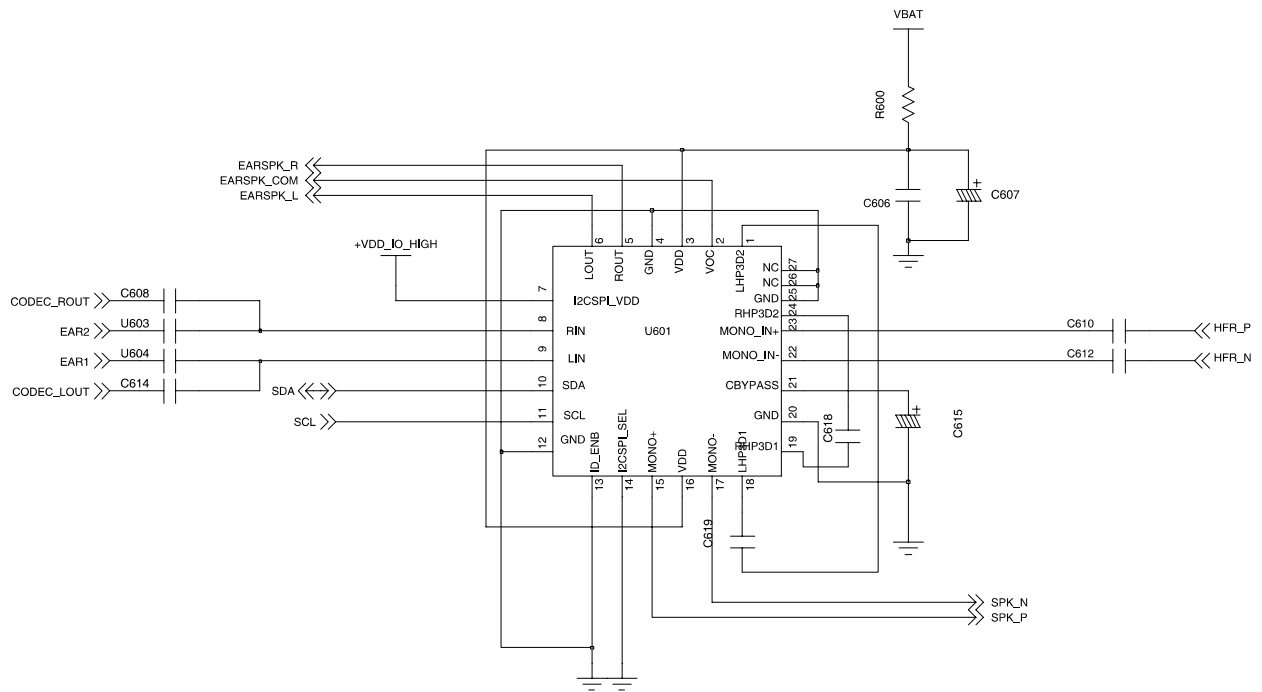


# Flow Chart of Troubleshooting



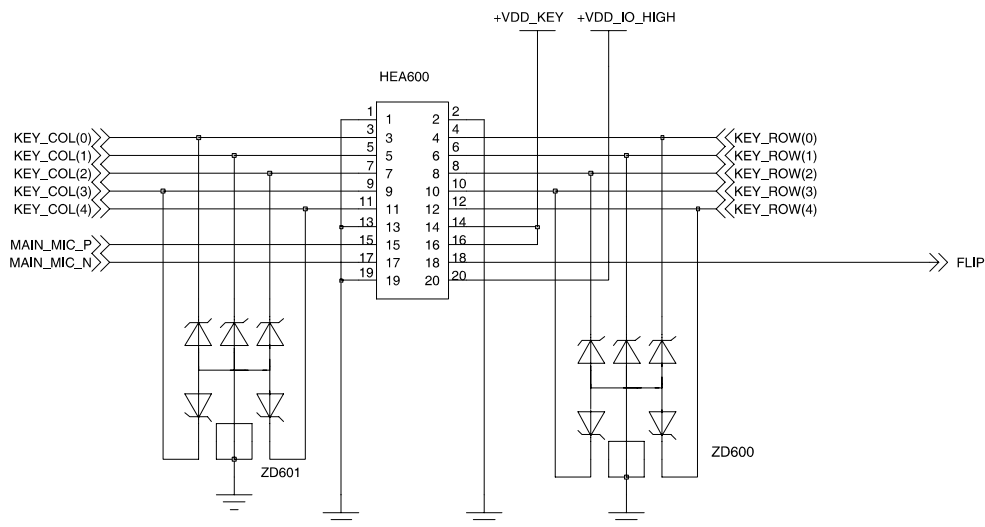
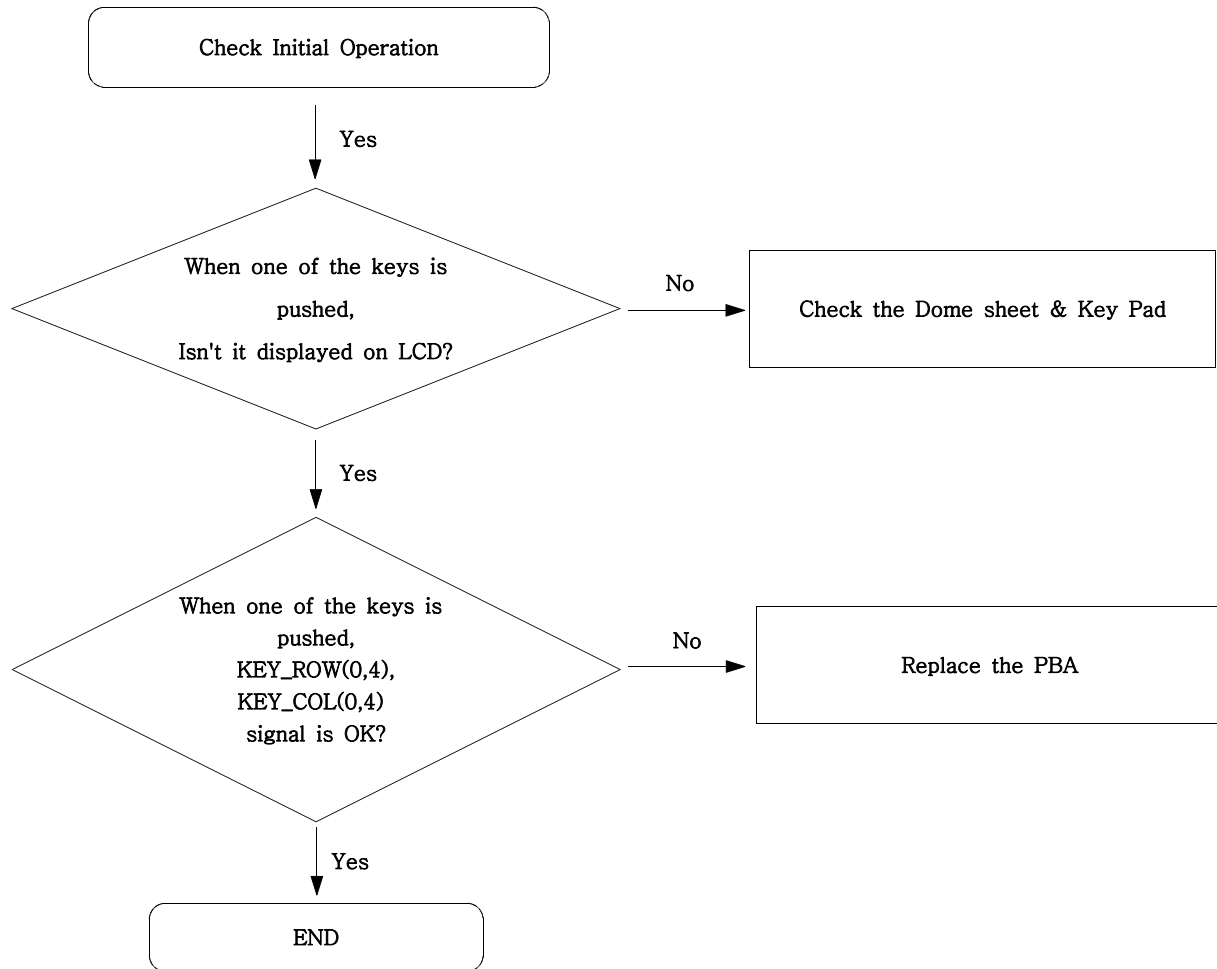
9-6. Speaker Part(Melody)





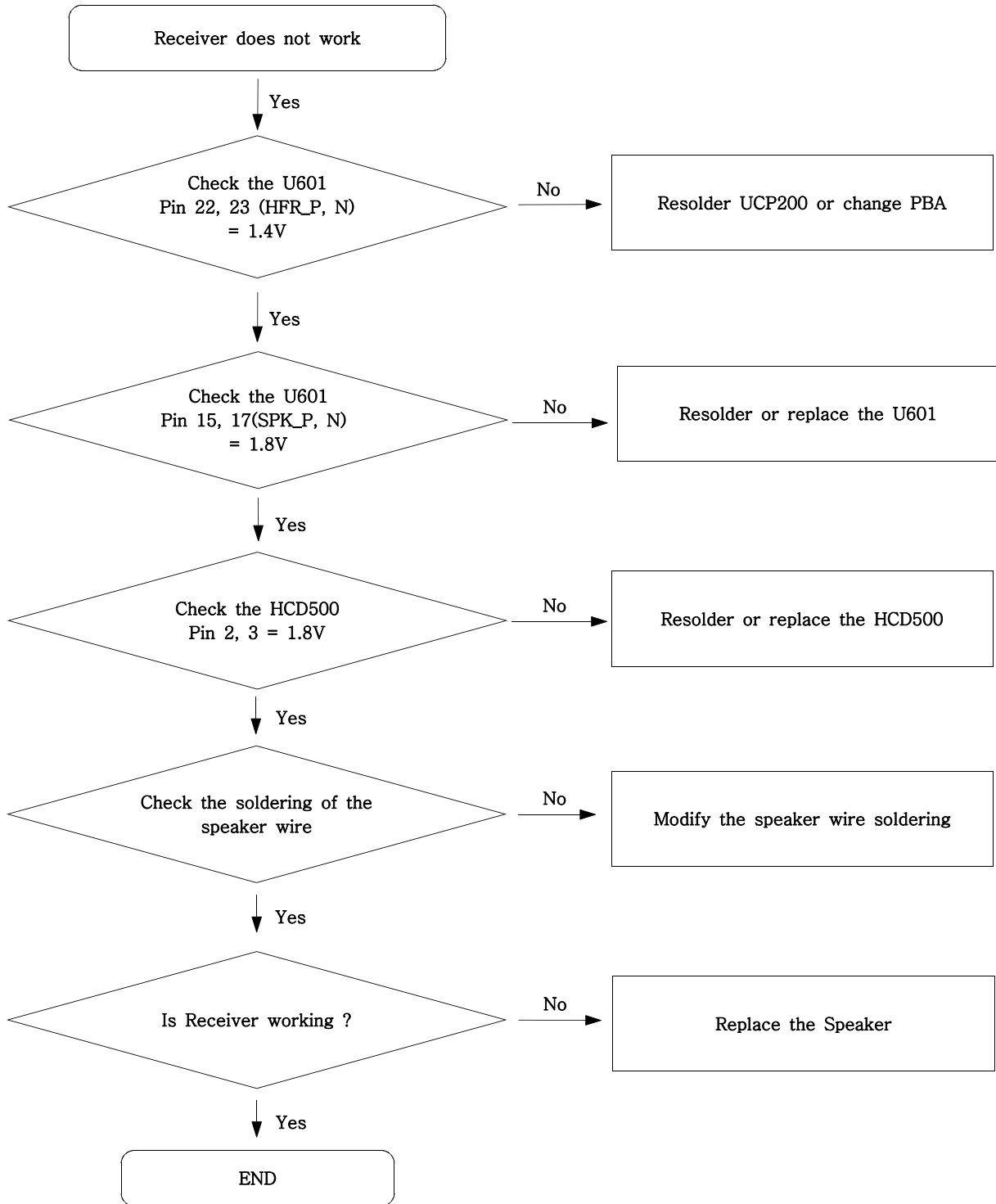
# AUDIO

### 9-7. Key Data Input

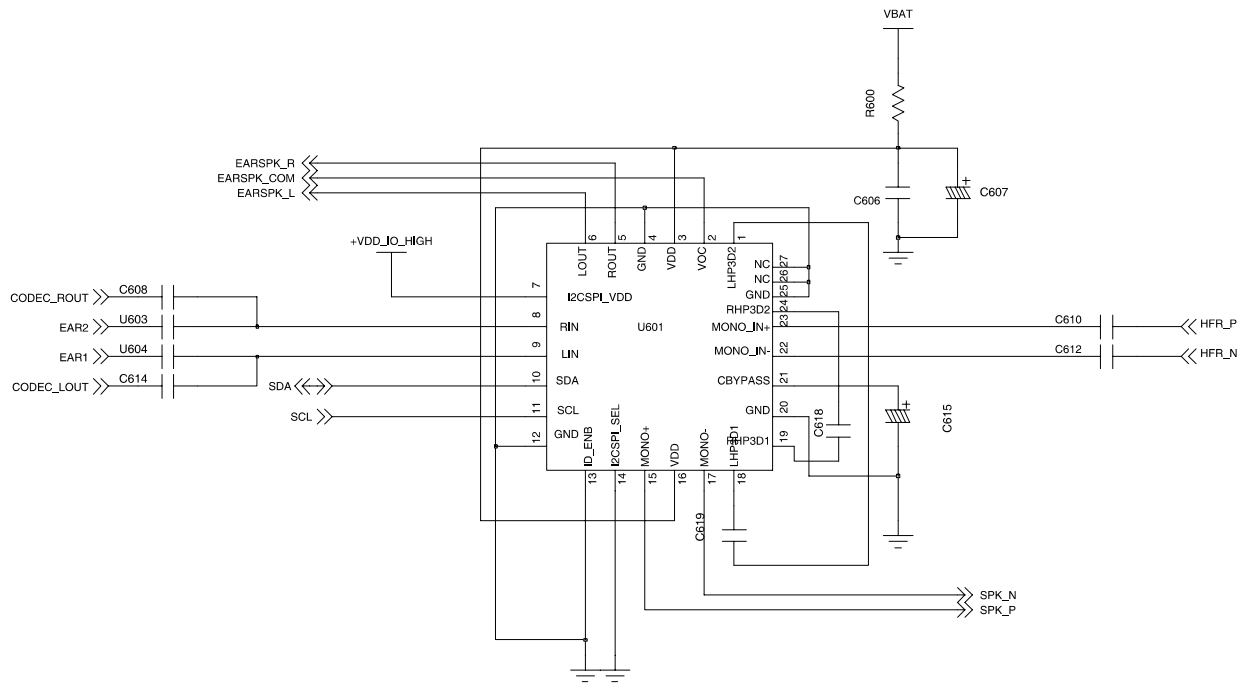


**MAIN KEY MAP**

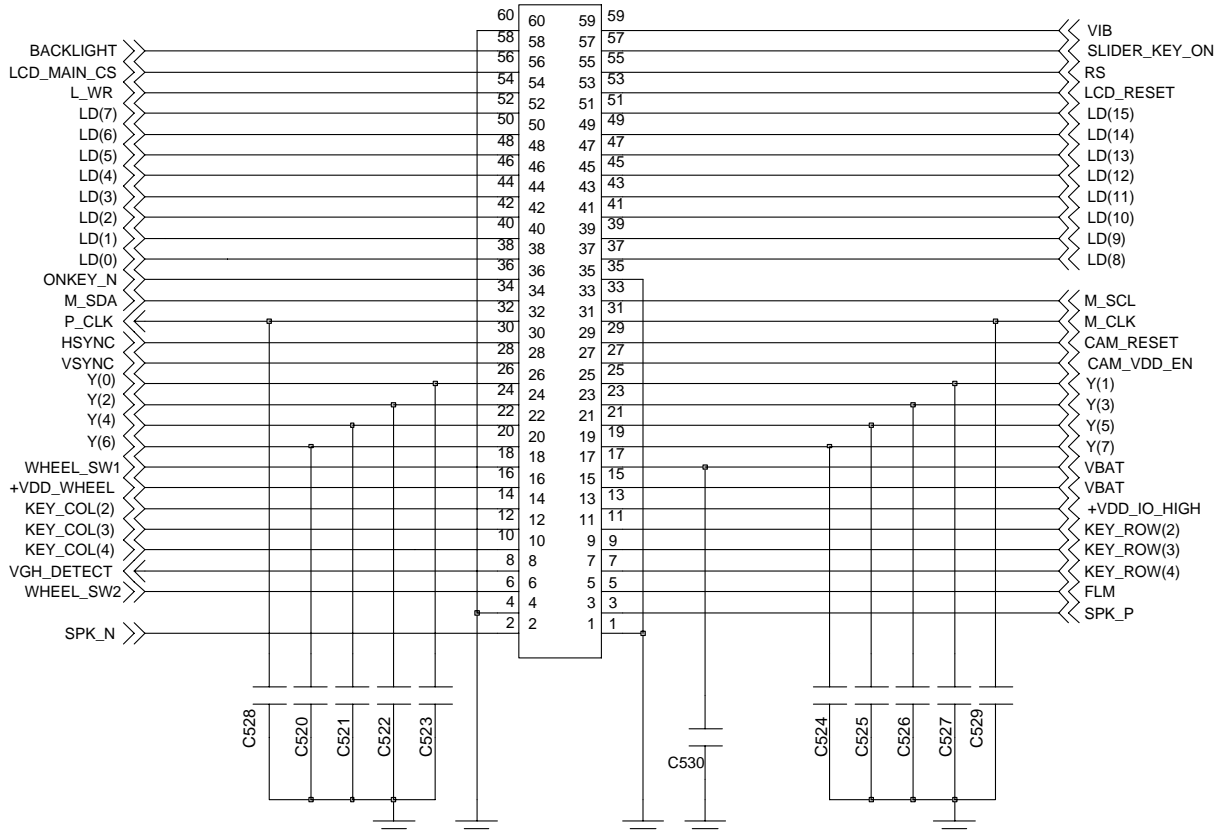
### 9-8. Receiver Part



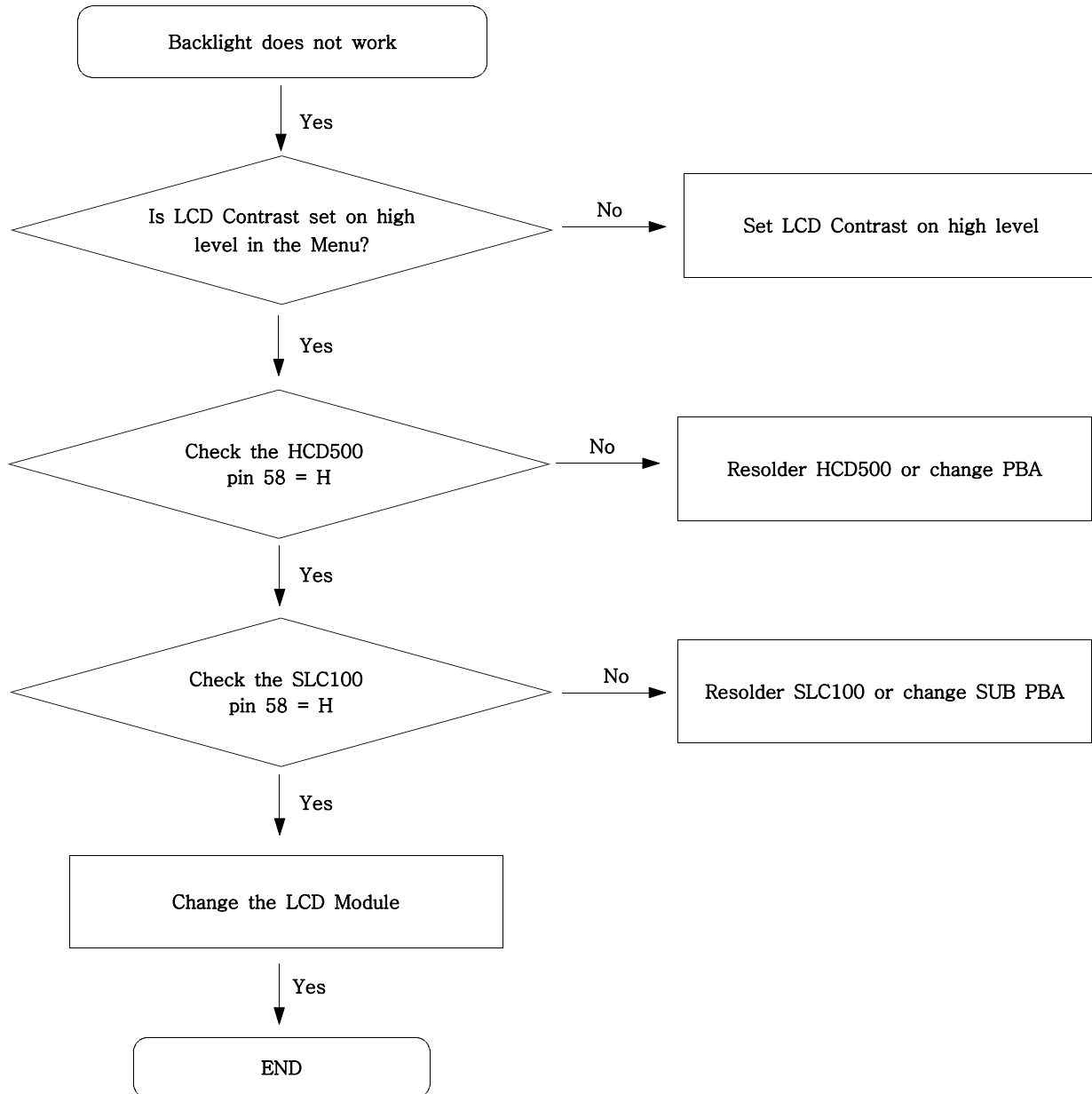


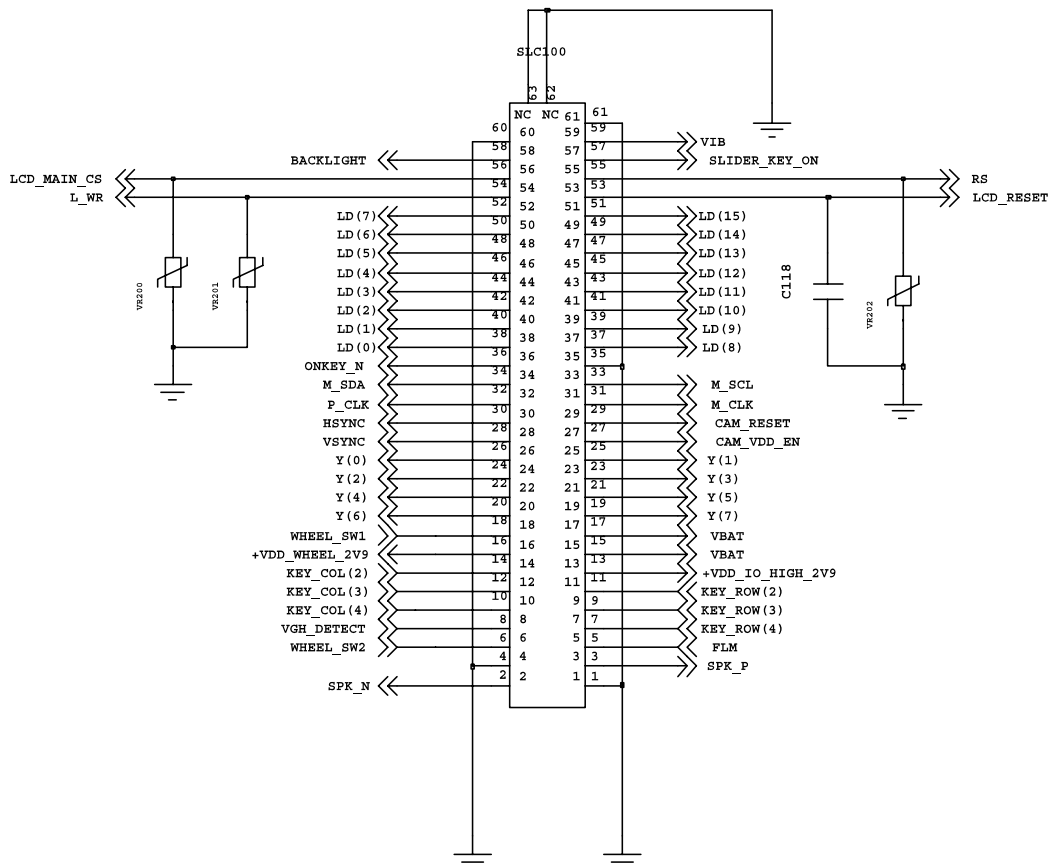
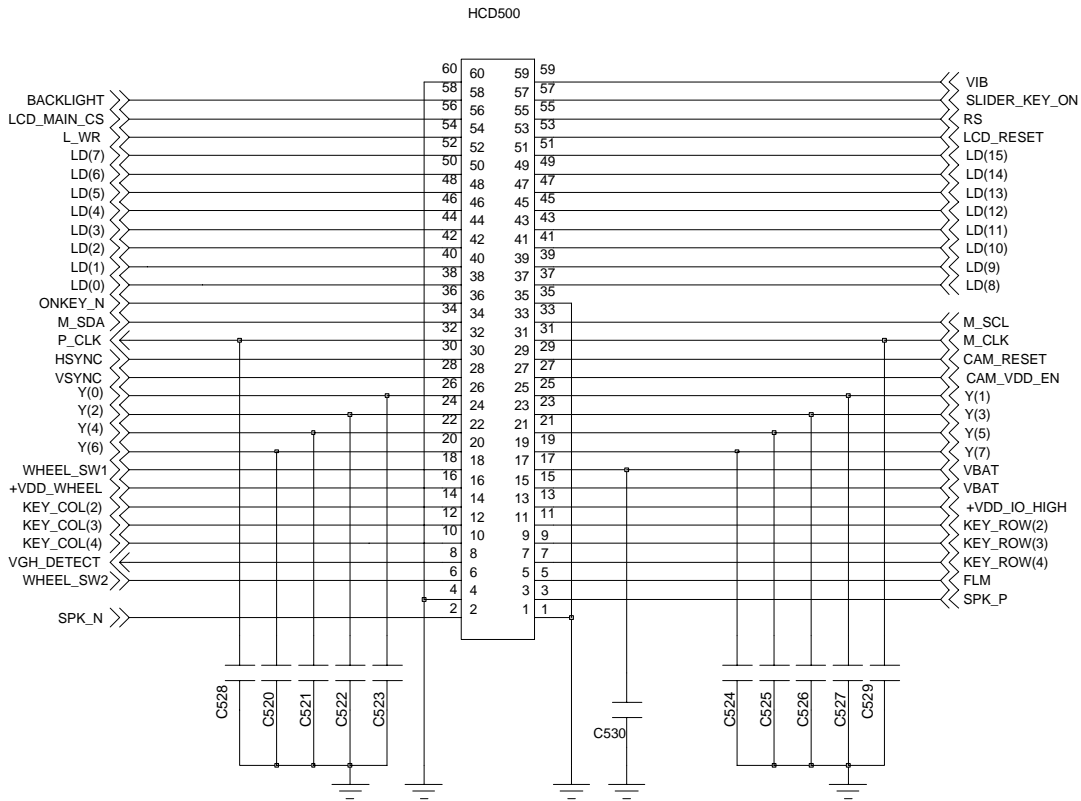


HCD500

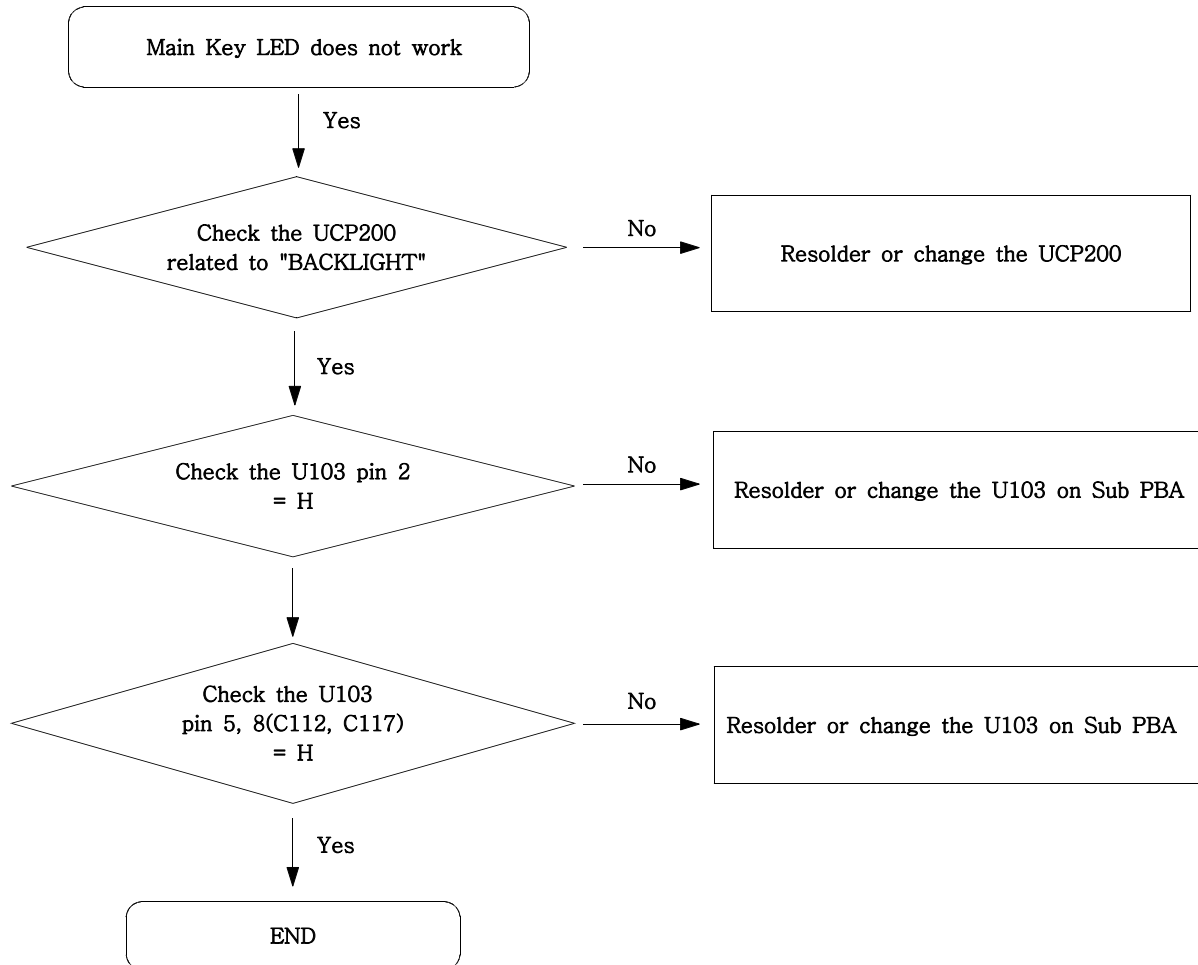


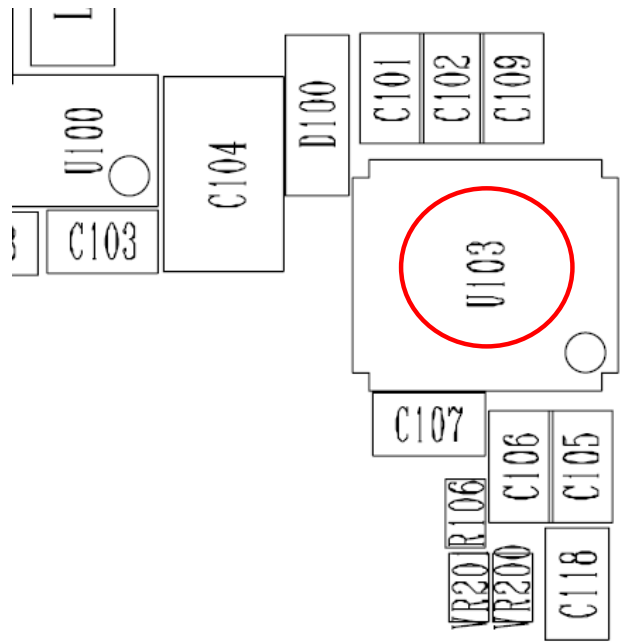
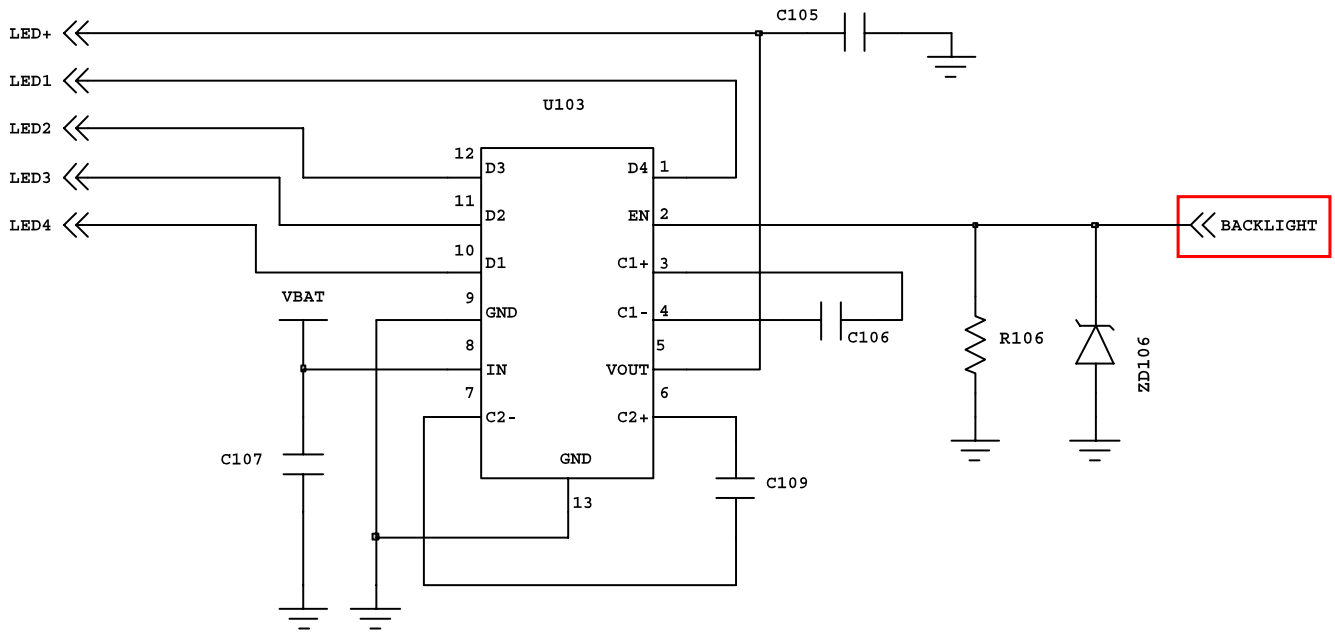
### 9-9. Back Light (for Color Main LCD)



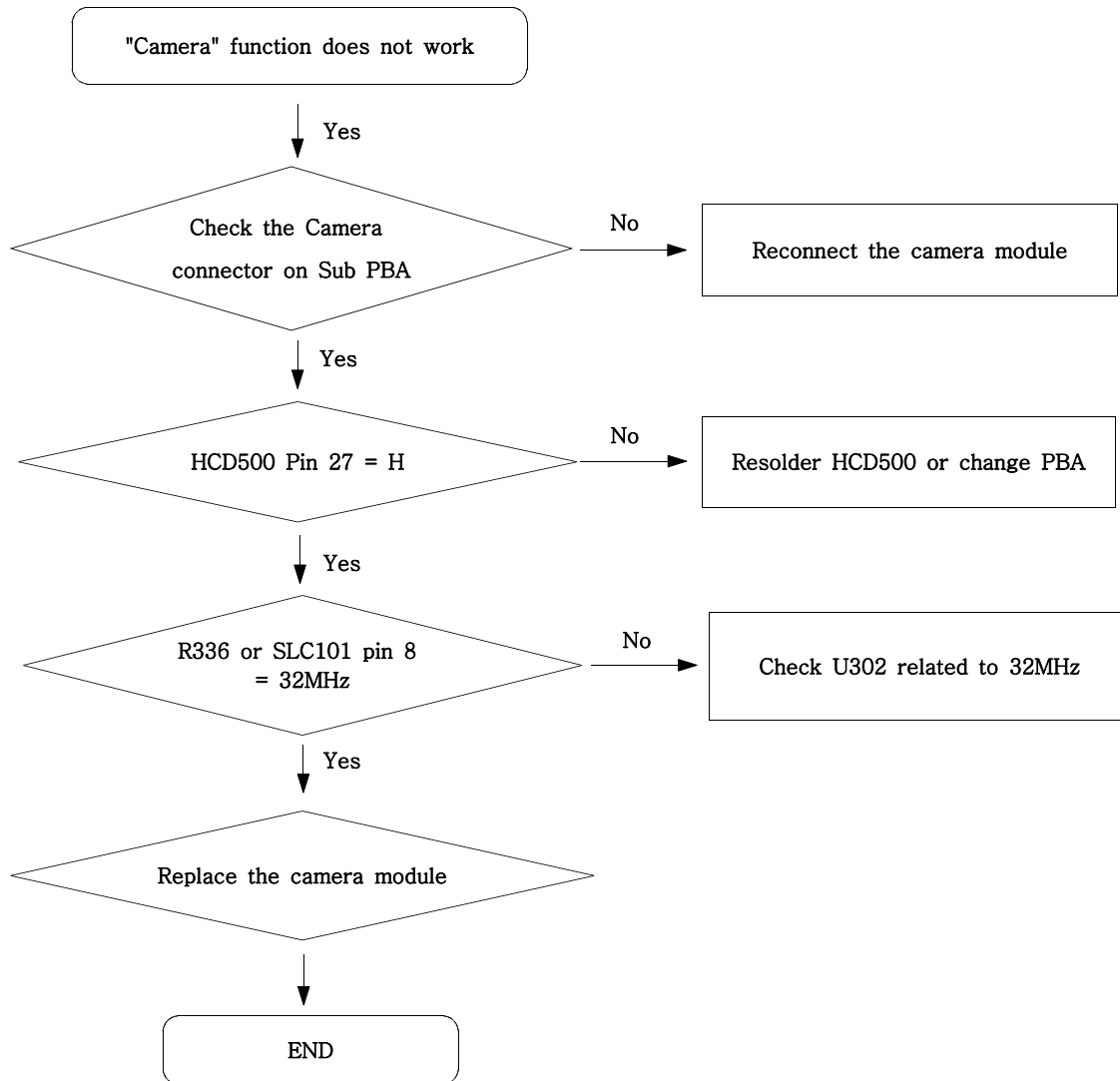


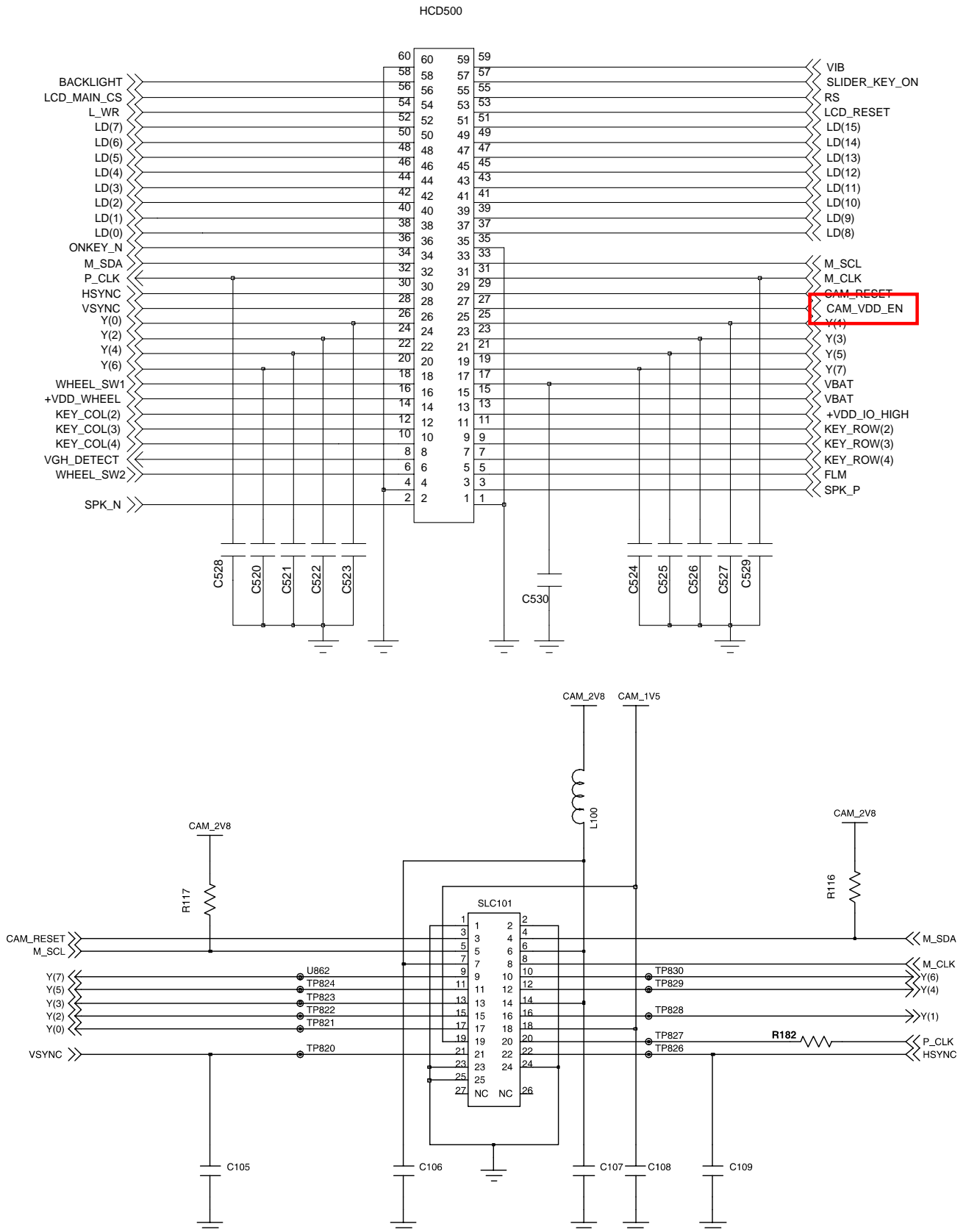
### 9-10. Key Back Light



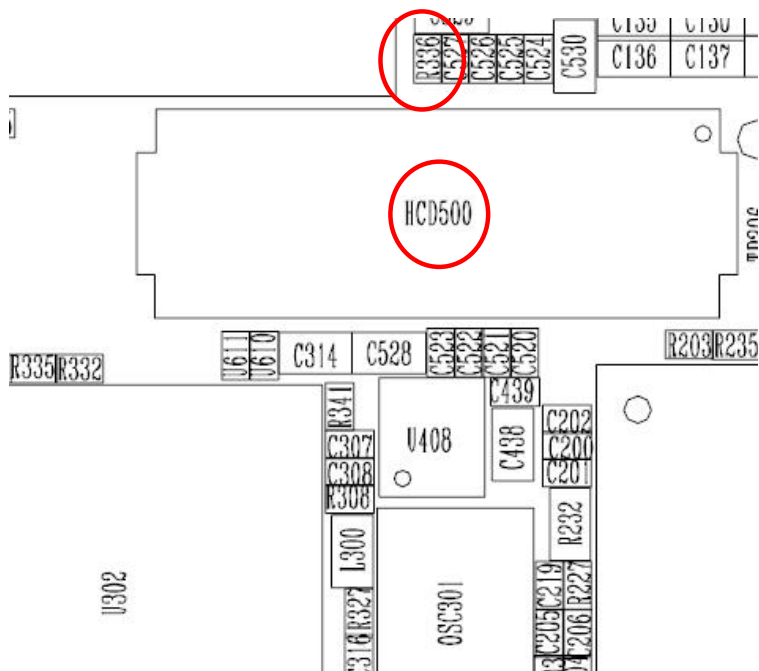
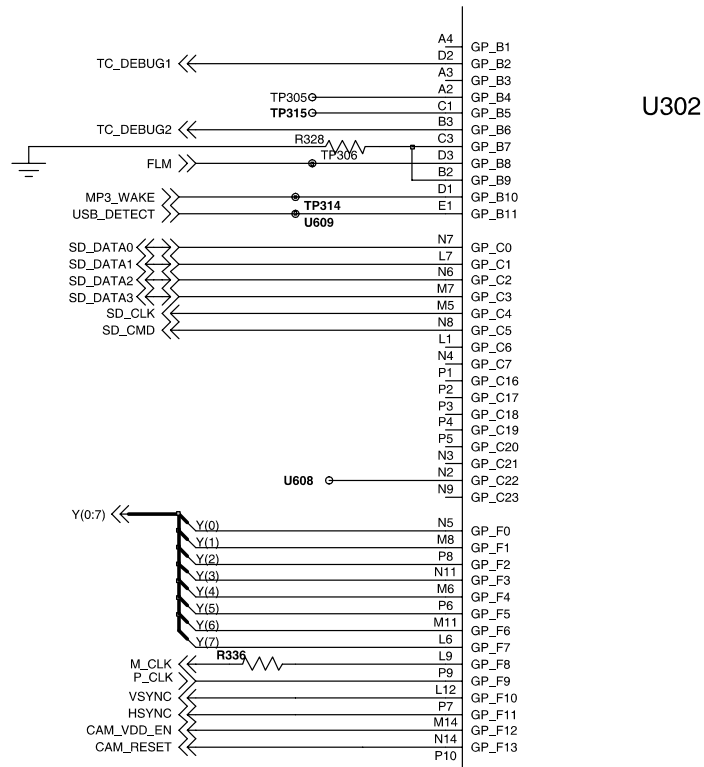


### 9-11. Camera part



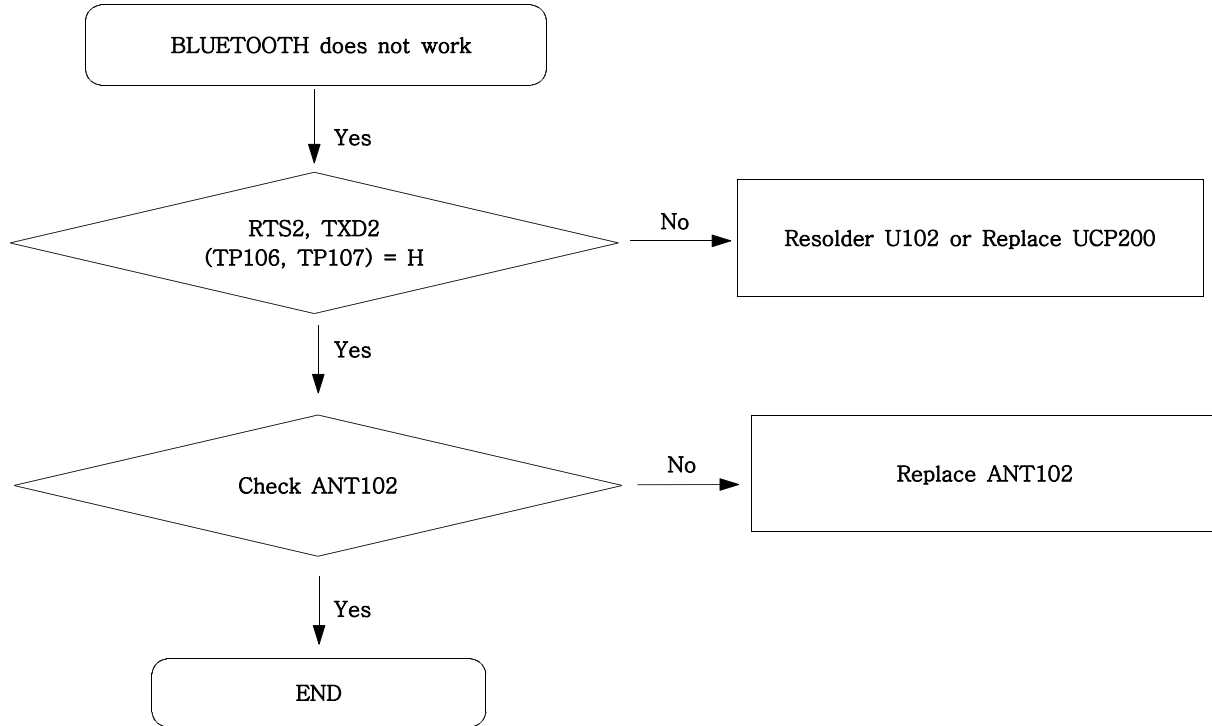


# Flow Chart of Troubleshooting

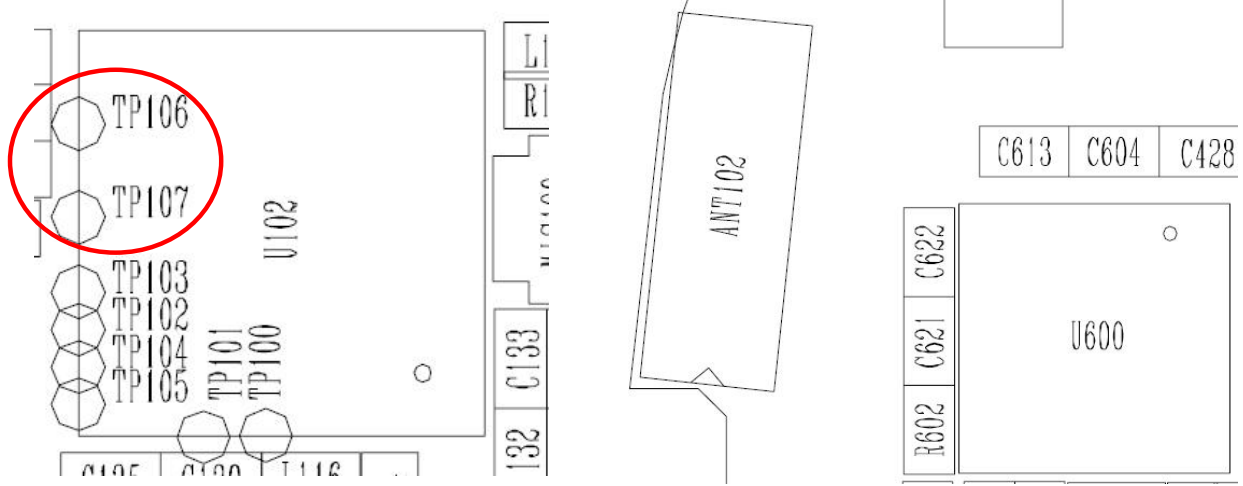
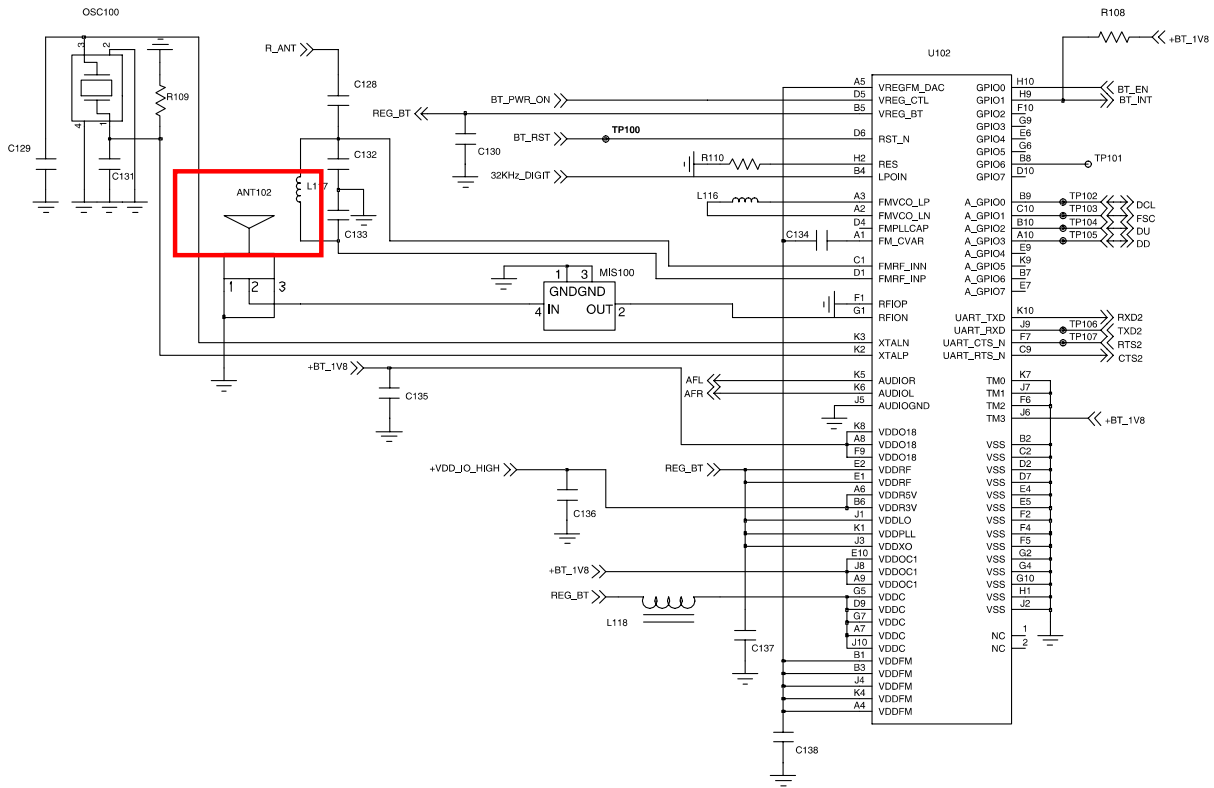




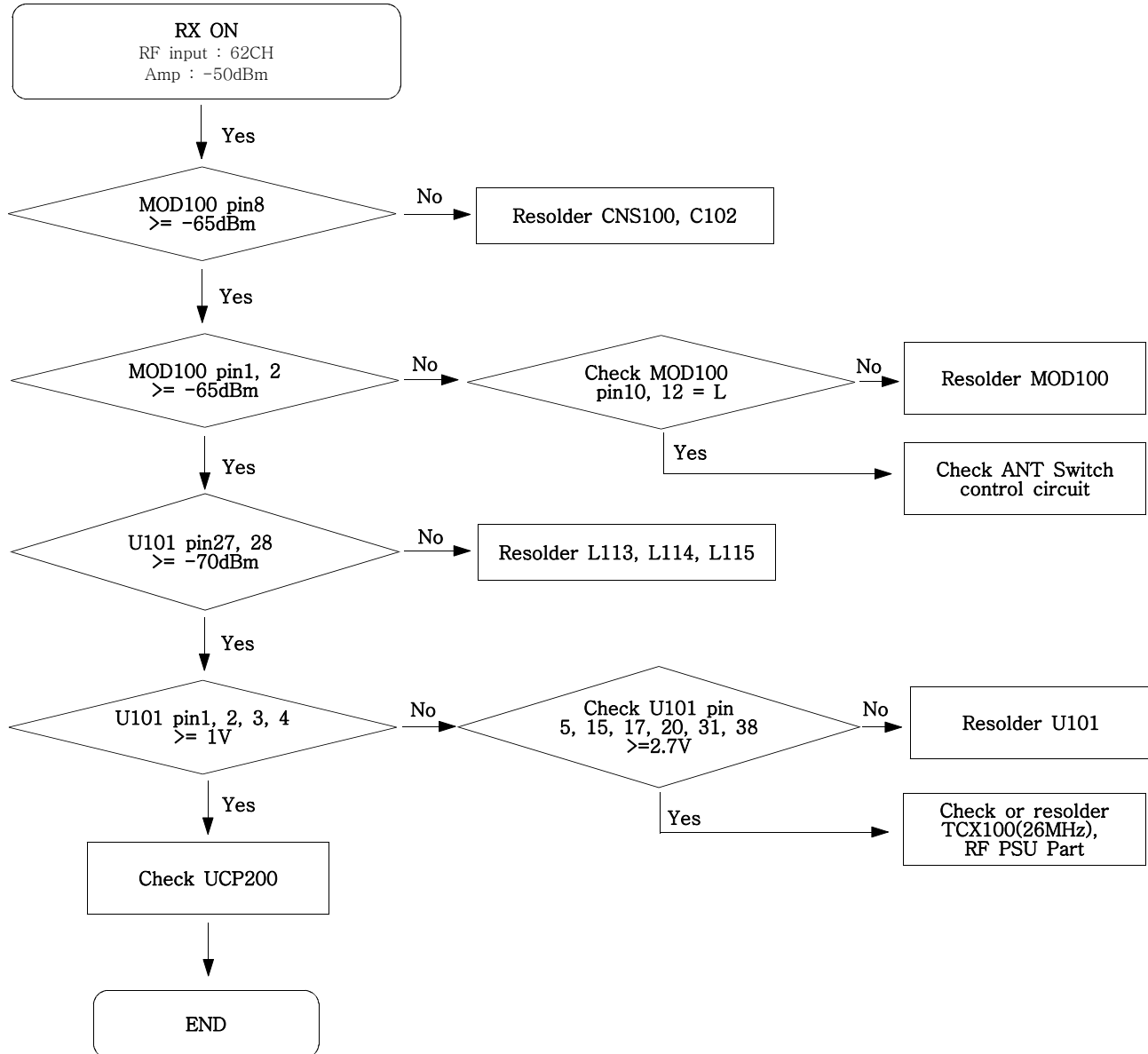
9-12. BLUETOOTH



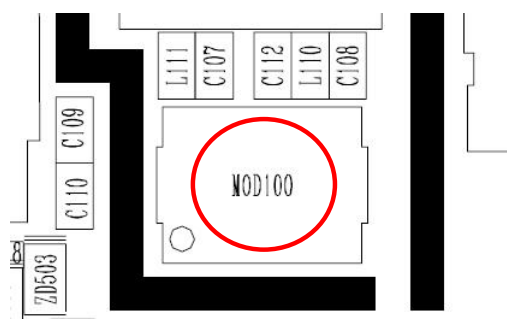
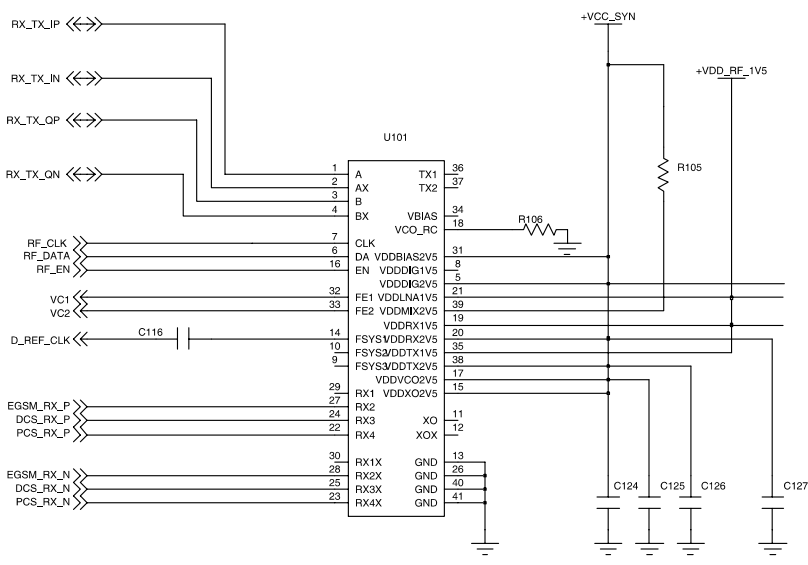
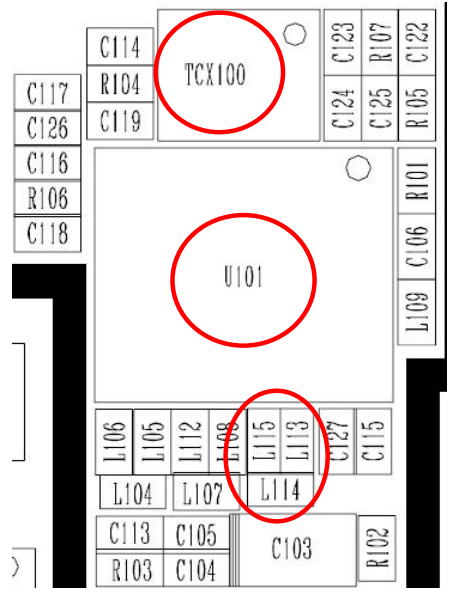
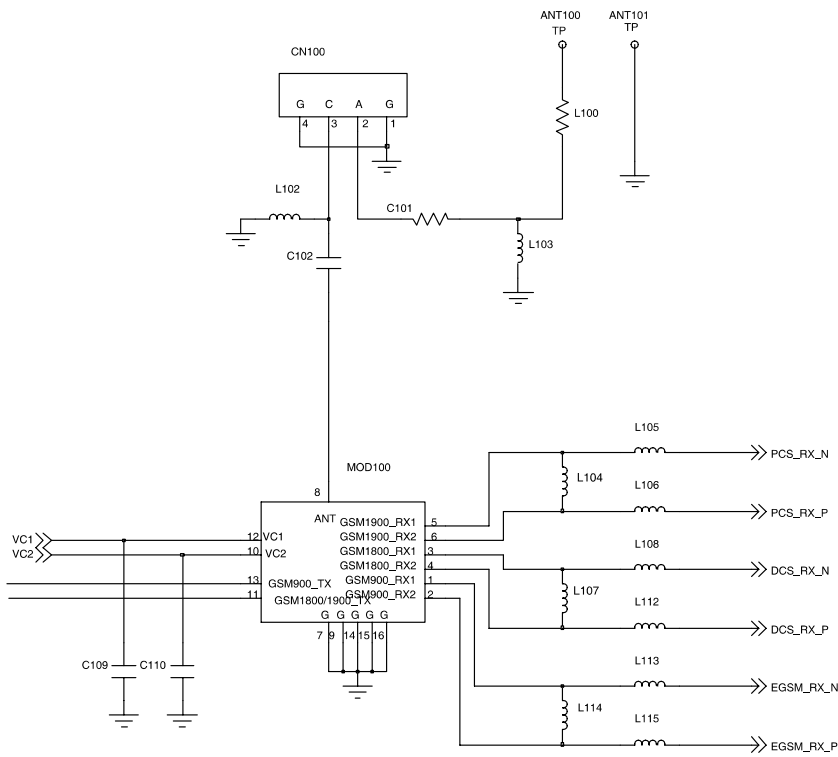
# Flow Chart of Troubleshooting



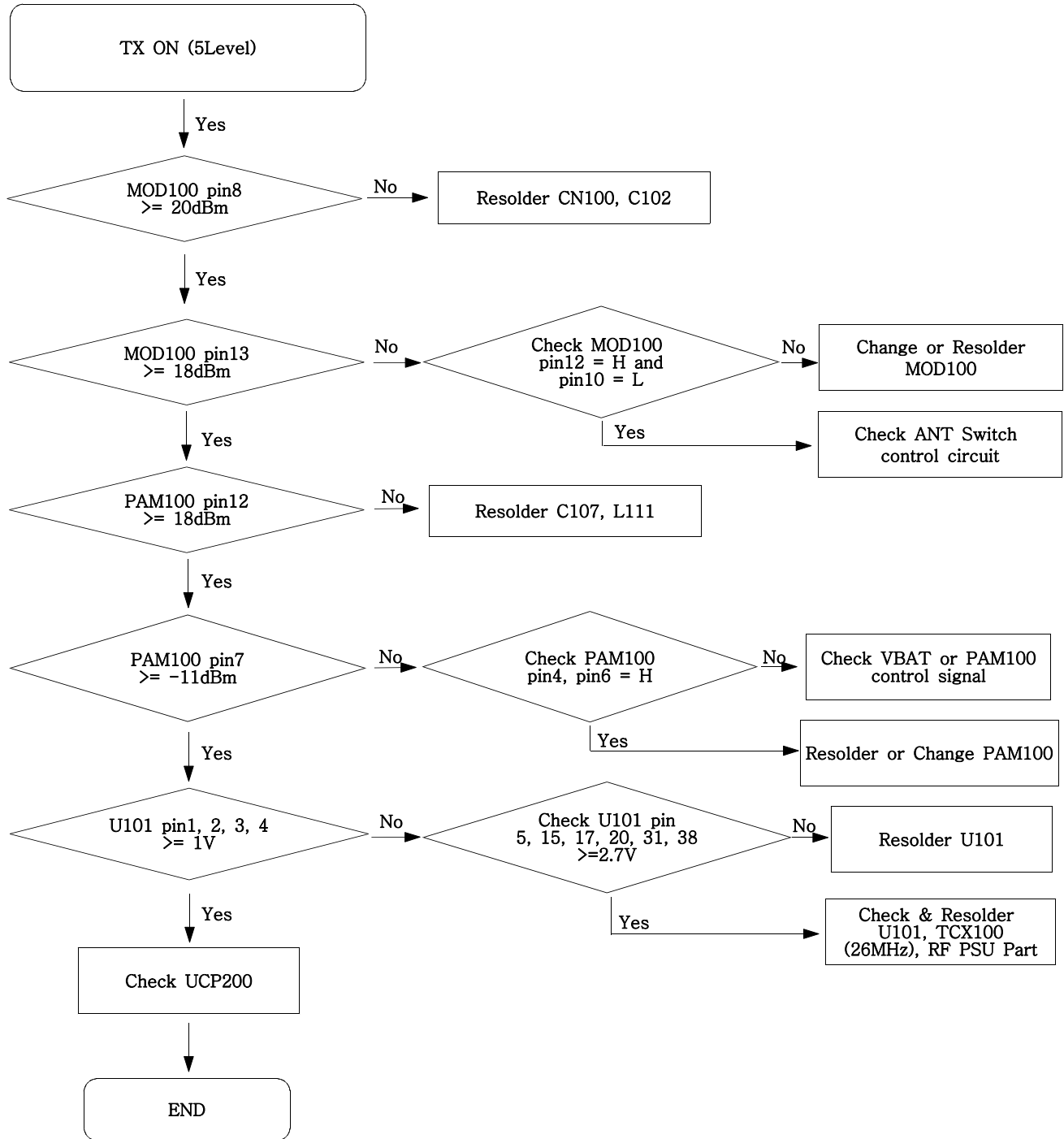
9-13. GSM Receiver



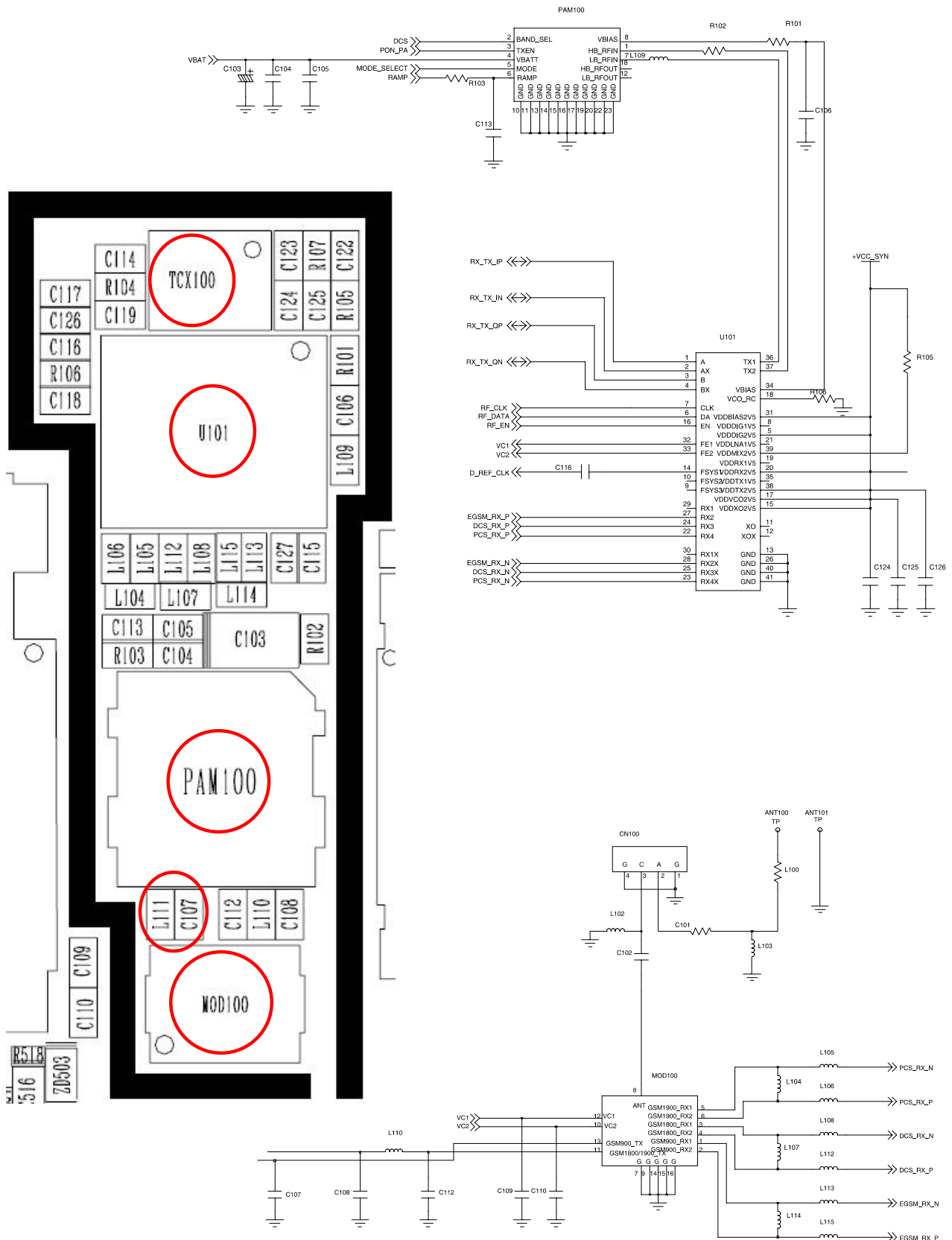
# Flow Chart of Troubleshooting



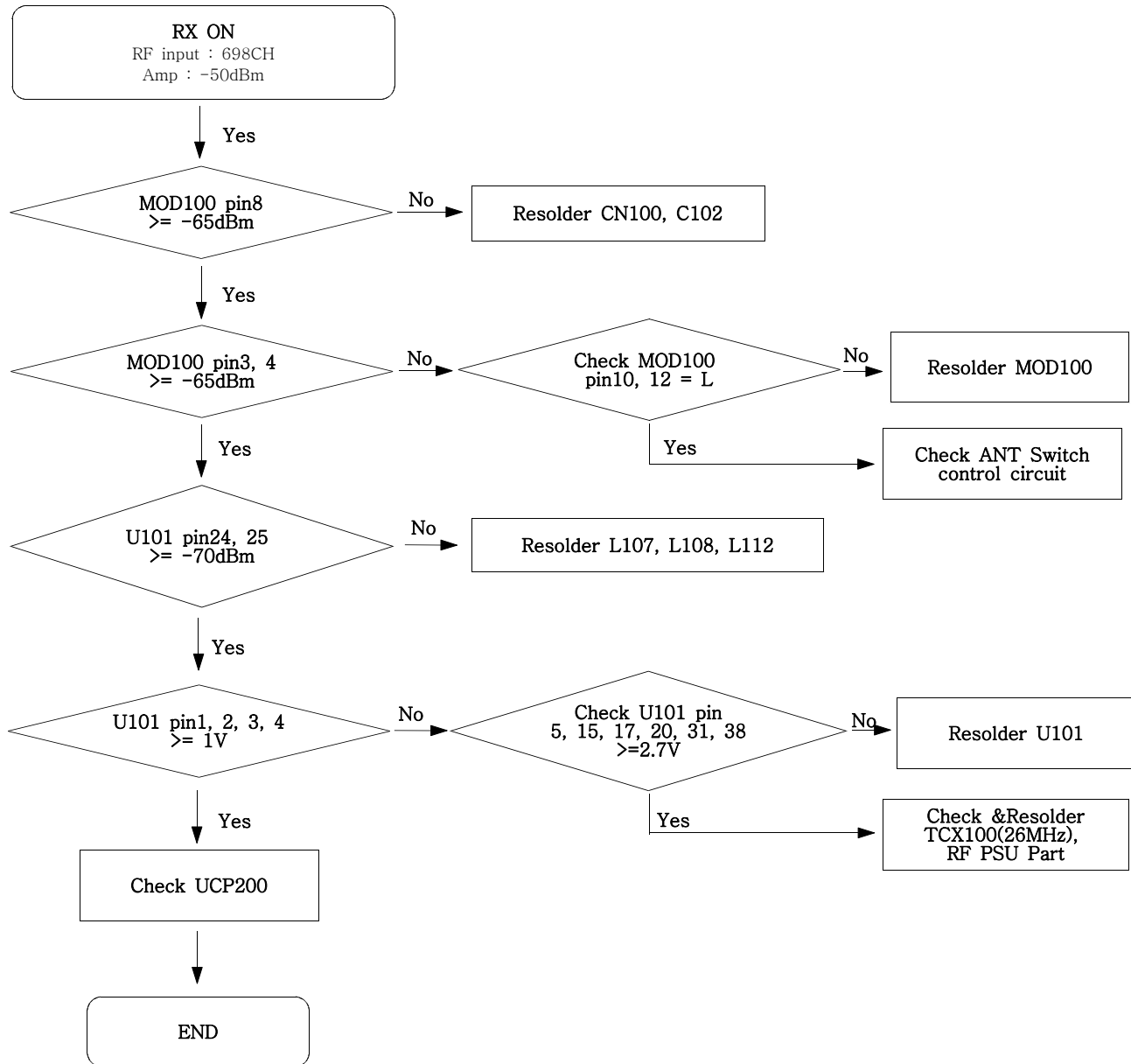
9-14. GSM Transmitter



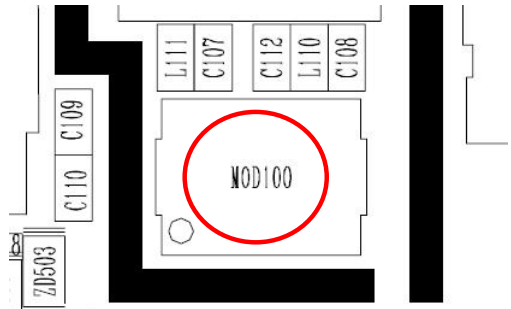
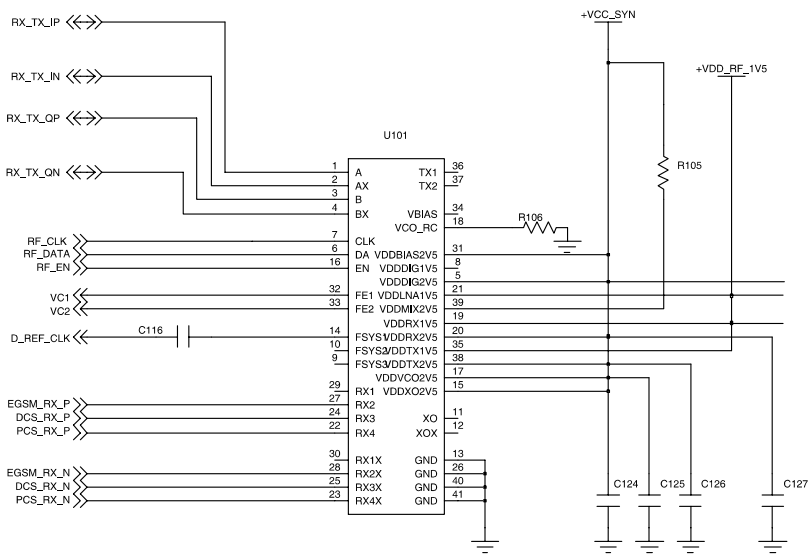
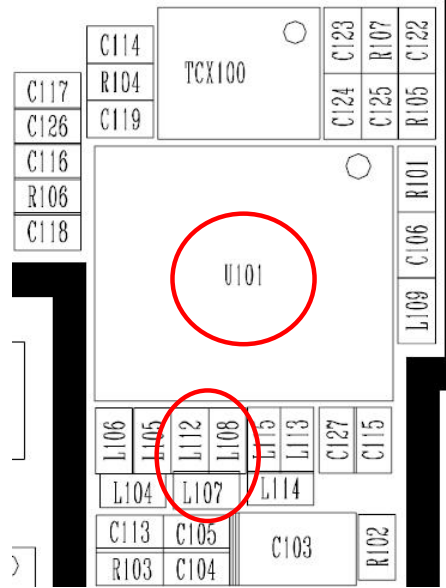
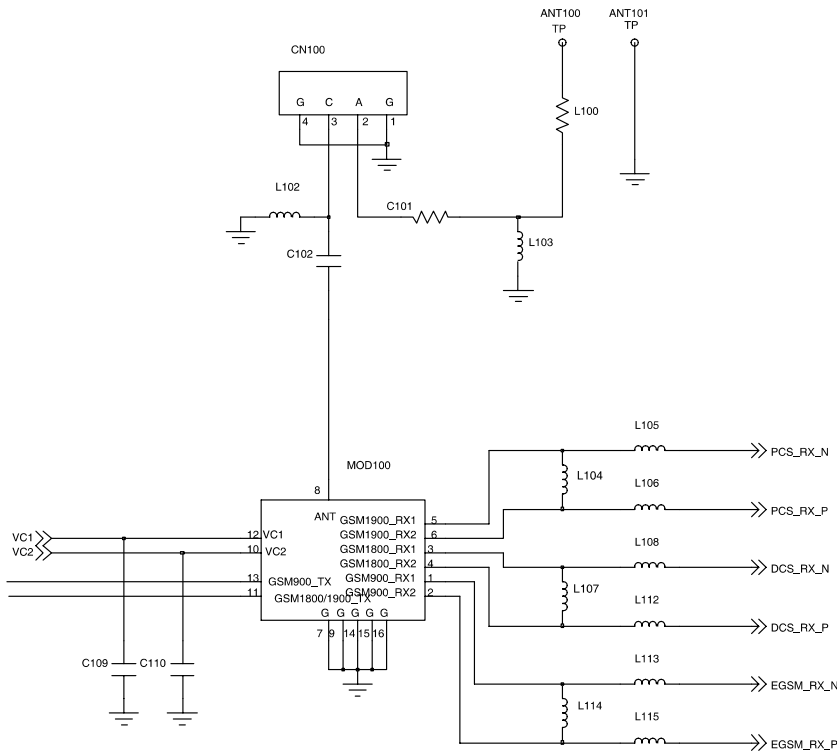
# Flow Chart of Troubleshooting



9-15. DCS Receiver

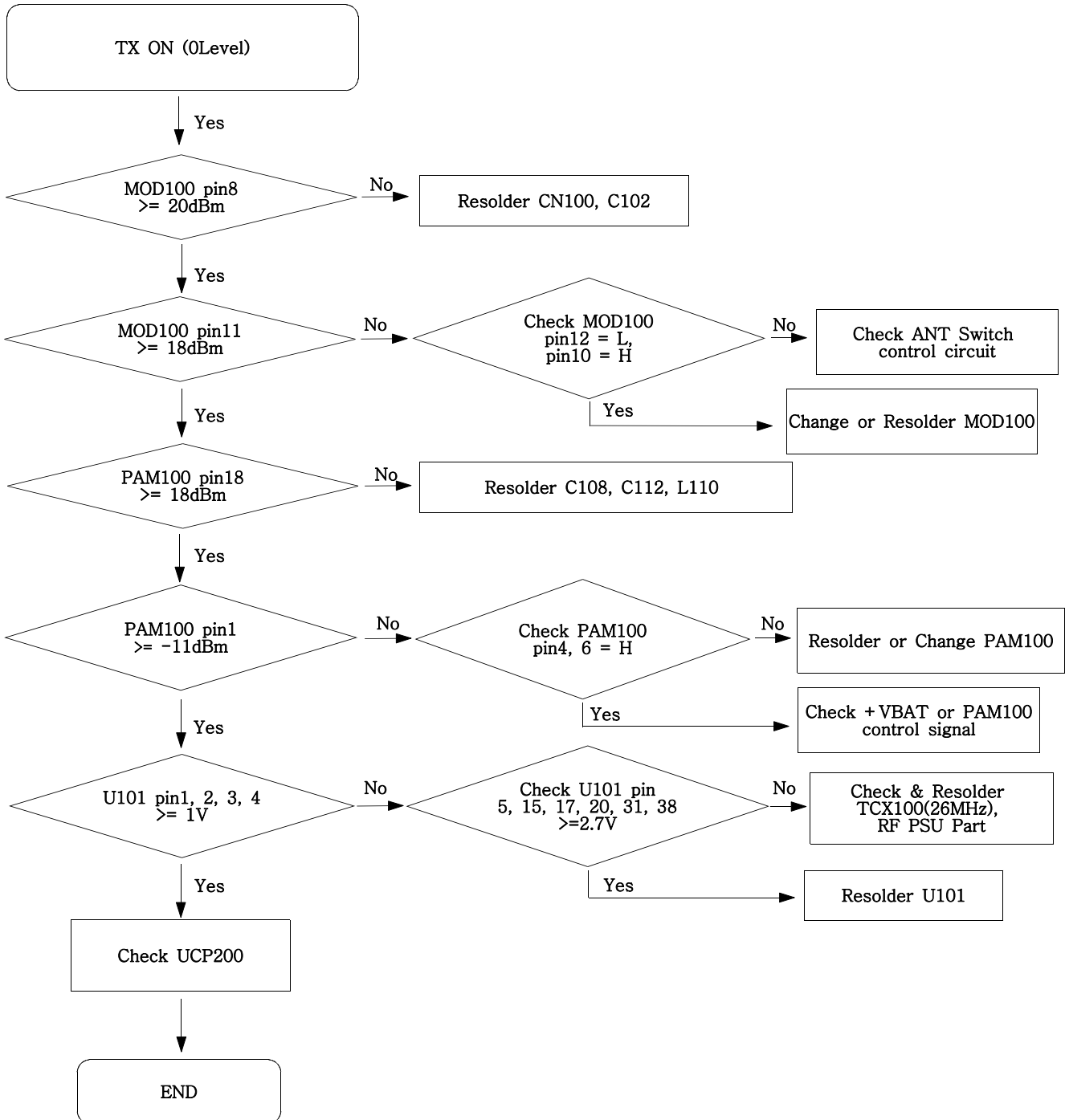


# Flow Chart of Troubleshooting

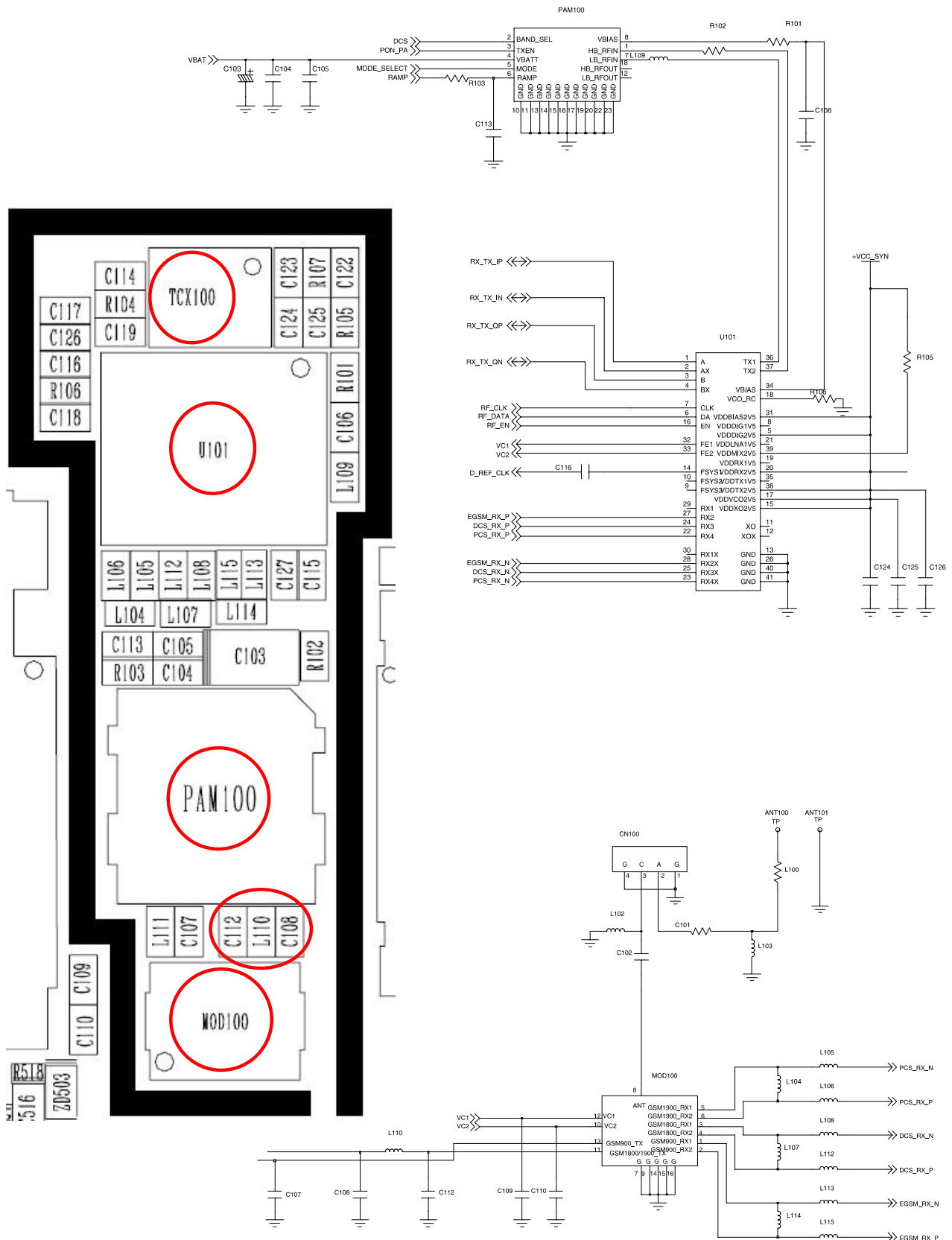




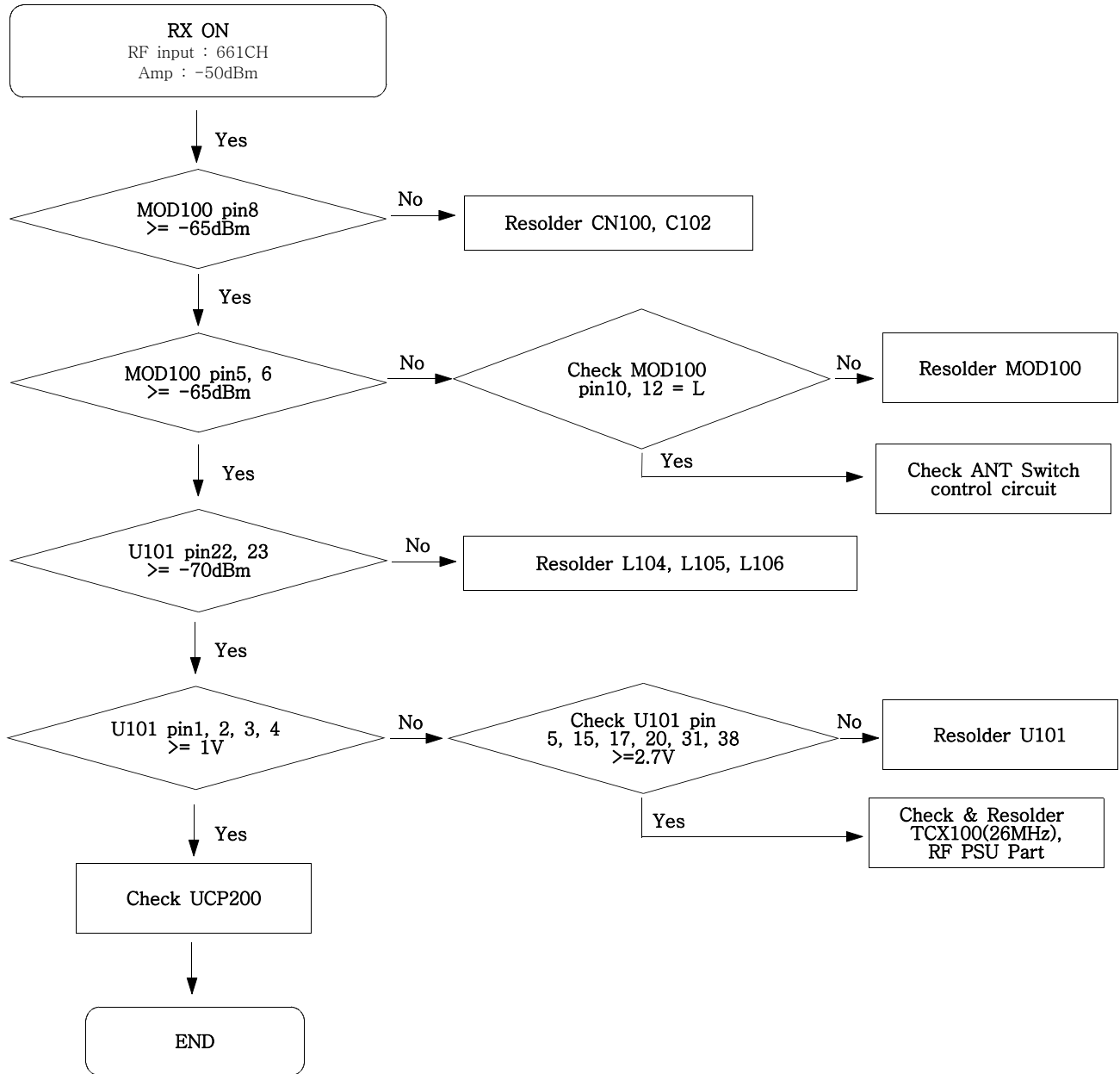
9-16. DCS Transmitter



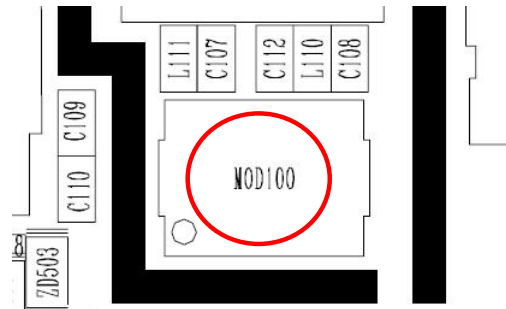
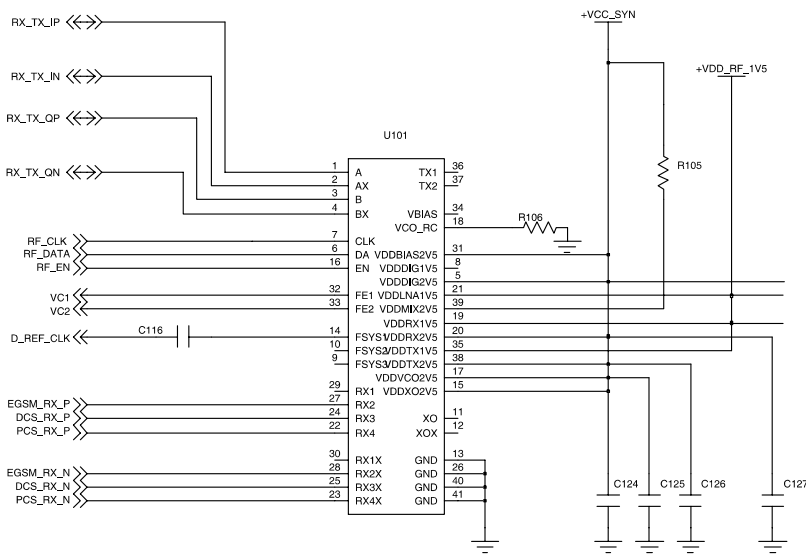
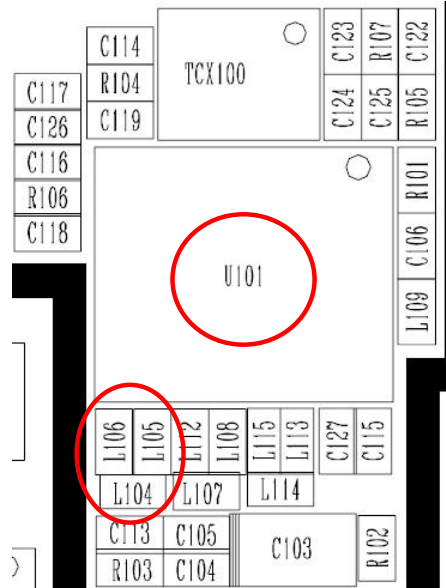
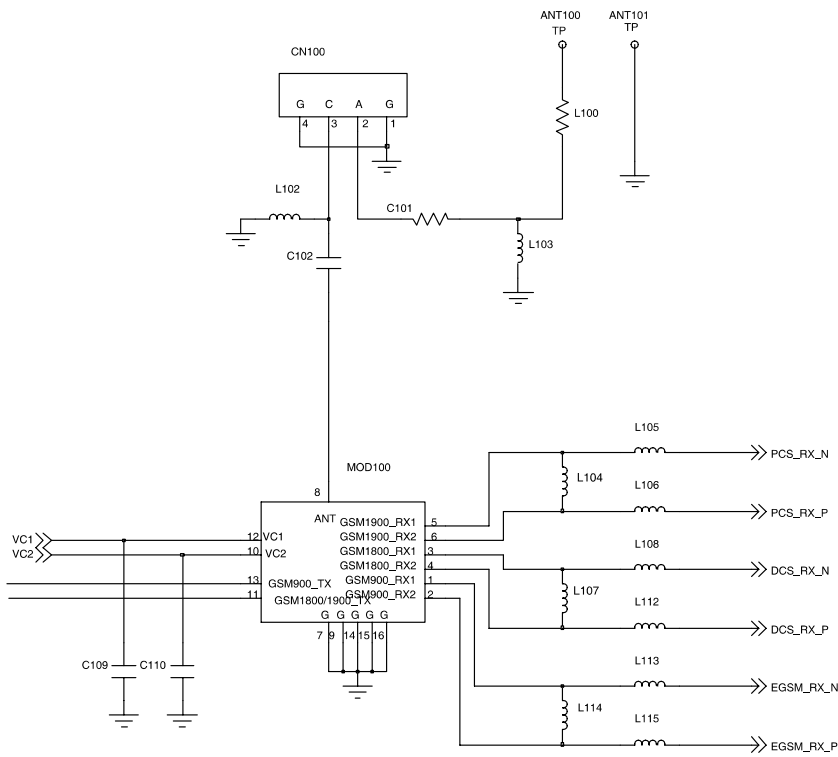
# Flow Chart of Troubleshooting



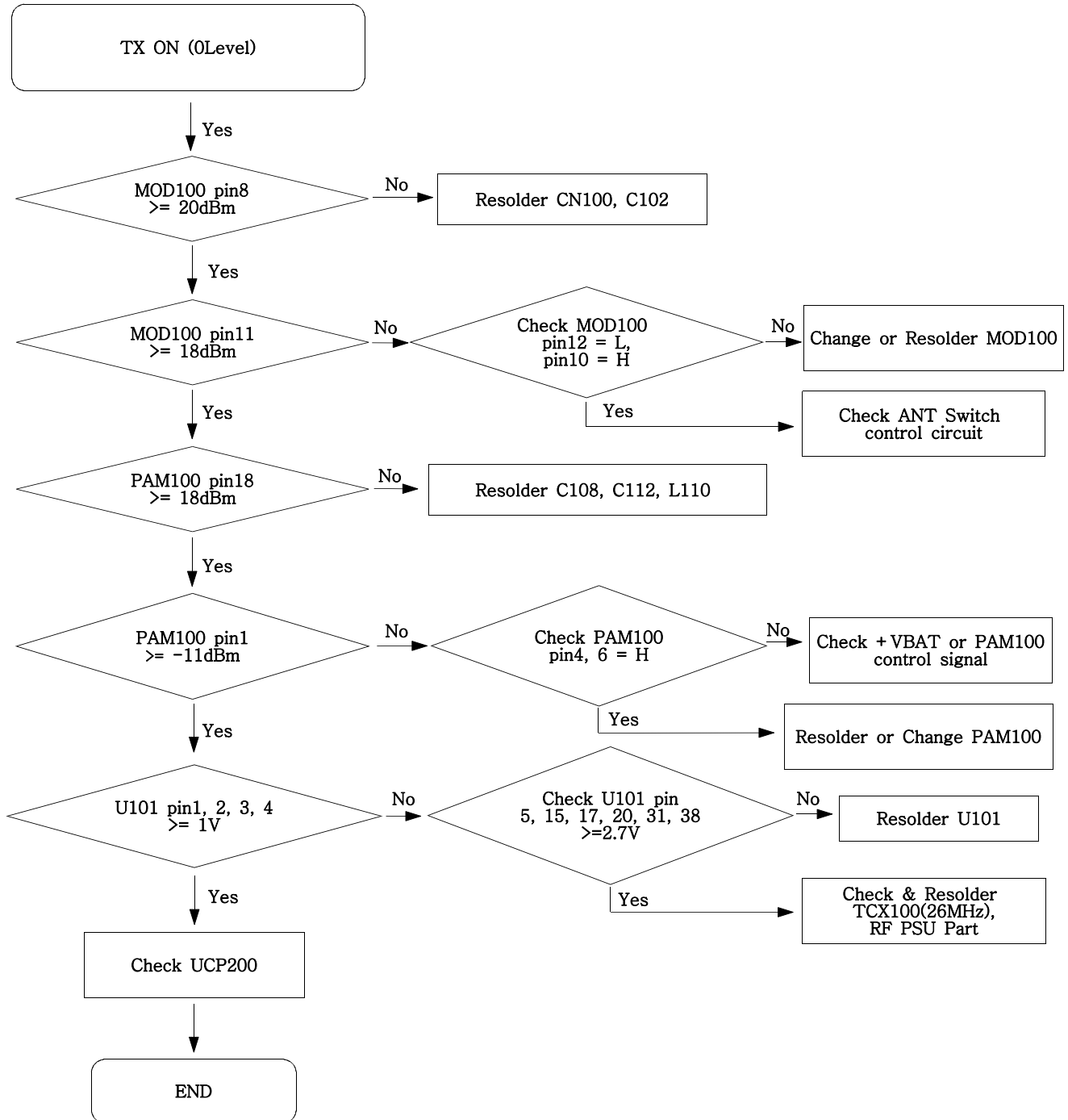
9-17. PCS Receiver



# Flow Chart of Troubleshooting



9-18. PCS Transmitter



# Flow Chart of Troubleshooting

