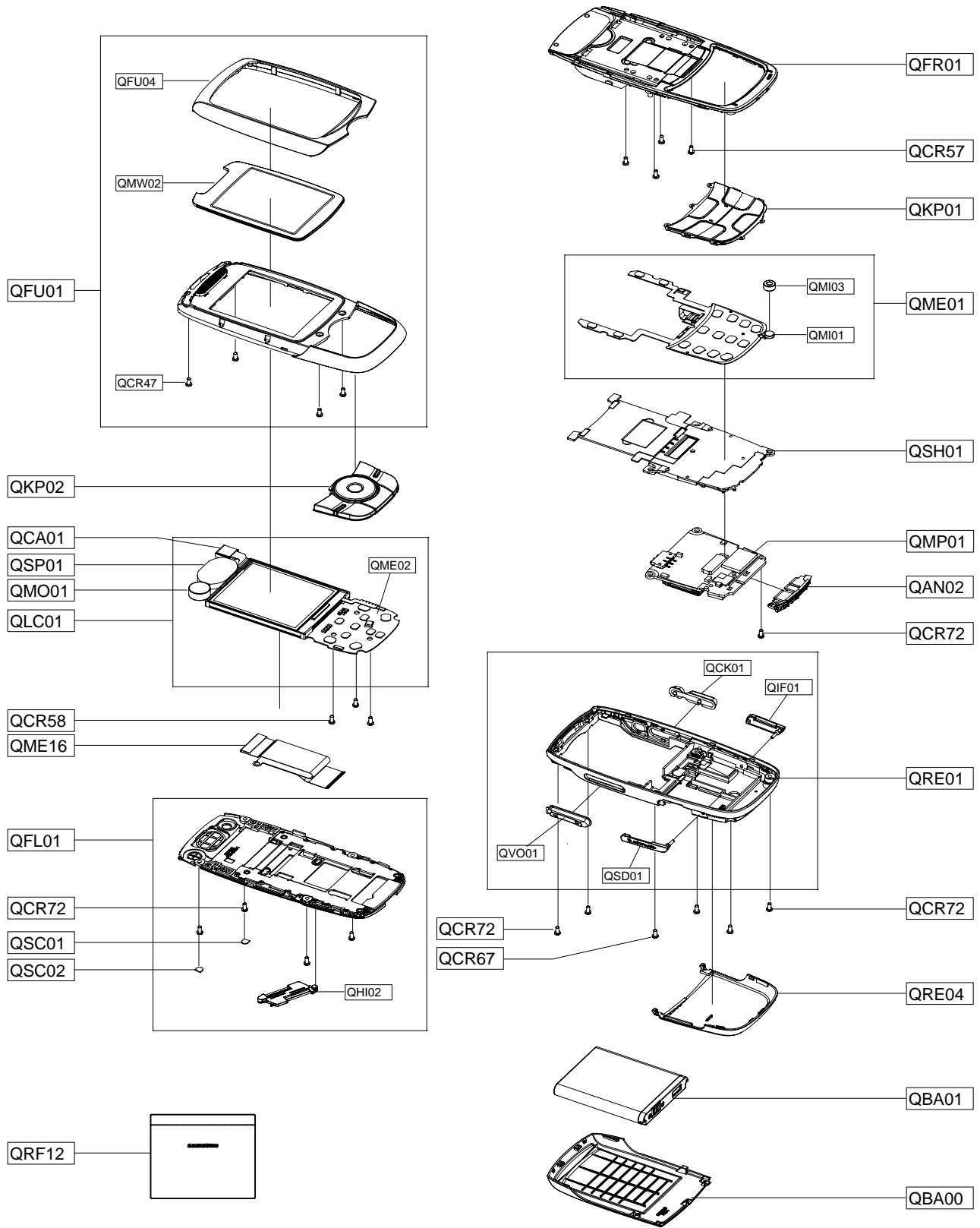


# 5. Exploded View/Disassembly&Assembly Instructions

## 5-1. Cellular phone Exploded View




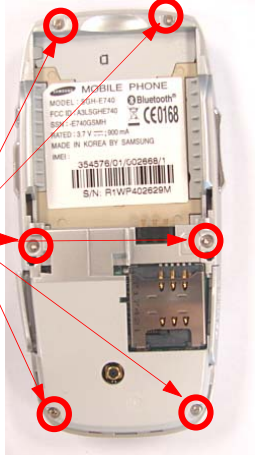

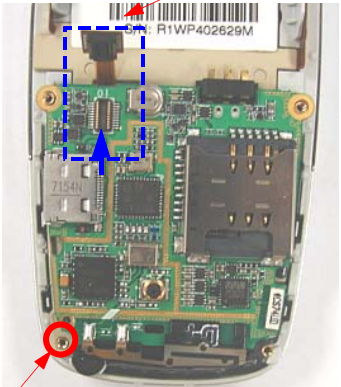
## 5-2. Cellular phone Parts list

Design LOC	Description	SEC CODE
QAN02	ANTENNA-SGH E740	GH42-01139A
QBA00	PMO-COVER BATTERY V2	GH72-37897A
QBA01	INNER BATTERY PACK-880MAH , BL	GH43-02772A
QCA01	CAMERA MODULE	GH59-04088A
QCK01	PMO-CAMERA KEY V3	GH72-39445A
QCR47	SCREW-MACHINE	6001-001695
QCR57	SCREW-MACHINE	6001-002001
QCR58	SCREW-MACHINE	6001-001870
QCR67	SCREW-MACHINE	6001-002083
QCR72	SCREW-MACHINE	6001-002051
QCR72	SCREW-MACHINE	6001-002051
QFL01	ASSY CASE-SLIDE LOWER	GH98-03666A
QFR01	ASSY CASE-FRONT	GH98-03668A
QFU01	ASSY CASE-UPPER DECO	GH98-05929A
QFU04	NDC-DECO UPPER V2	GH71-07423A
QHI02	ASSY HINGE-ACTUATOR BODY	GH98-04898A
QIF01	PMO-COVER IF V3	GH72-39152A
QKP01	ASSY KEYPAD-MAIN(TEC/SIL)	GH98-05021A
QKP02	ASSY KEYPAD-(EU/SIL)	GH98-03671A
QLC01	ELA ETC-SGHE740 LCD MODULE(M/S	GH96-02637B
QME01	KEY FPCB-MAIN KEY PBA(S/BLU)	GH59-04751A
QME02	DOME SHEET-DOME SHEET 10KEY(SU	GH59-04291A
QME16	MEA-SLIDER FPCB KIT(E740)	GH97-07815A
QMI01	AS-MIC SVC	GH81-05445A
QMI03	AS-SCHF679 MIC RUBBER	GH81-06599A
QMO01	MOTOR DC-SGH E740	GH31-00306A
QMP01	PBA MAIN-SGHE740S	GH92-03648A
QMW02	PCT-COVER MAIN WINDOW	GH72-37012A
QRE01	ASSY CASE-REAR	GH98-03669A
QRE04	PMO-DECO REAR V2	GH72-37898A
QRF12	ASSY ACCE-EARPHONE CASE	GH98-05770A
QSC01	RMO RUBBER-SCREW CAP L	GH73-09822A
QSC02	RMO RUBBER-SCREW CAP R	GH73-09823A
QSD01	PMO-COVER MICRO SD V2	GH72-37902A
QSH01	ASSY BRACKET-SHIELD CAN	GH98-04897A
QSP01	SPEAKER	3001-002120
QVO01	PMO-VOLUME KEY V3	GH72-39444A

Description	SEC CODE
CBF INTERFACE-DLC,X830,SIL,PCB	GH39-00720B
ADAPTOR-SGHE690,SIL,UK,A_TYPE	GH44-01362B
LABEL(R)-WATER SOAK	GH68-09361A
AS-SGHE740 CAMERA TAPE	GH81-06677A
VINYL-BOHO WHEEL TOP	GH74-33987A
TAPE INSU	GH74-33431A
MPR-ELEC TAPE	GH74-19116A
TAPE GASK	GH74-24020A
TAPE INSU	GH74-32907A
TAPE ELEC-LCD MODULE	GH74-33381A
TAPE INSU-KEY FPCB L	GH74-33780A
TAPE INSU-KEY FPCB R	GH74-33781A
BAG PE	6902-000634
LABEL(P)-IMEI	GH68-01335D
LABEL(R)-MAIN(EU)	GH68-14766A
BOX-UNIT(SEA)	GH69-05392C
CUSHION-CASE(UK/XSA_NEW)	GH69-05654A
IC-MEMORY CARD	1109-001352
BAG ZIPPER	6902-000683
S/W CD-SGHE740 PC LINK CD	GH46-00452A
MANUAL USERS-SEA ENGLISH	GH68-15060A
CONNECTOR-ADAPTOR	3719-001319
VINYL-BOHO MAIN WINDOW 2	GH74-33552A
EARPHONE-AAEP452SSE,M20,SIL,EU	GH59-04781A

### 5-3. Disassembly and Assembly Instructions

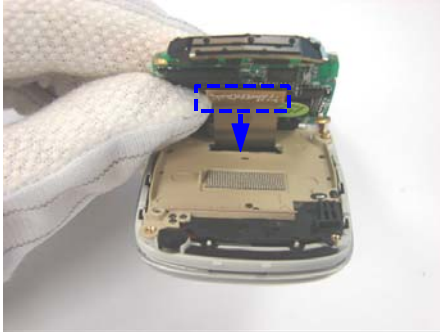
#### 5-3-1. Disassembly

<p><b>1</b></p> <p>1) Open the earjack cover downward. 2) Undo a hook beside earjack cover with a disassembly tool and disassemble the rear cover in the direction which the arrow points to.</p> 	<p><b>2</b></p> <p>1) Unscrew 6 rear screws.</p>  <p>1) Unscrew screws.</p>
<p>1) Take care of not scratching on the rear cover. 2) Use a disassembly tool.</p>	<p>1) Take care of not scratching on the rear. 2) Use a cruciform screwdriver.</p>
<p><b>3</b></p> <p>1) Undo a hook in the middle of rear with a disassembly tool and disassemble the rear in the direction which the arrow points to.</p> 	<p><b>4</b></p> <p>1) Unscrew the screw at the bottom of PBA. 2) Pull out the key FPCB connector at the top of PBA.</p>  <p>Pull out the connector.</p> <p>Unscrew a screw.</p>
<p>1) Take care of not scratching on the rear and the front. 2) Use a disassembly tool.</p>	<p>1) Use a cruciform screwdriver.</p>

5

1) Pull out the LCD connector raising a PBA by your own hand.

Pull out the connector



6

1) Take off volume key FPCB and camera key FPCB outward from the front.  
2) Take off a shield can from the front.



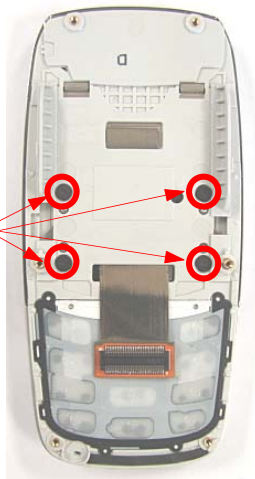
1) Be aware of not damaging on FPCB.

1) Be aware of not damaging on camera key and volume key FPCBs.

7

1) Unscrew 4 front screws.

Unscrew screws.

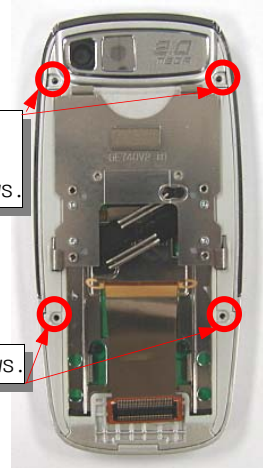


8

1) Remove 2 screw caps at the top of the slide lower with tweezers.  
2) Unscrew 4 slide lower screws.

1) Remove screw caps.  
2) Unscrew screws.

1) Unscrew screws.

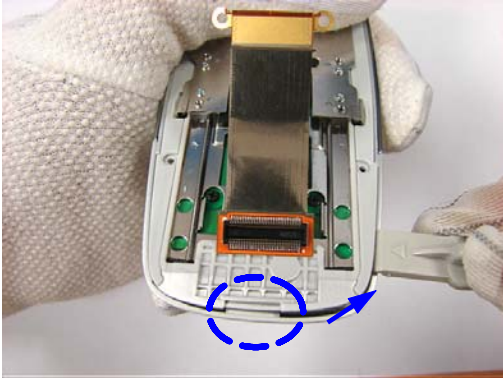


1) Take care of not scratching on the front.  
2) Use a cruciform screwdriver.

1) Take care of not scratching on the slide lower.  
2) Use a cruciform screwdriver.  
3) When you remove screw caps, use tweezers.

9

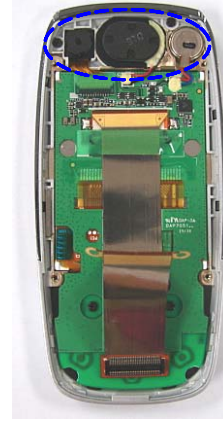
1) Undo a hook at the bottom of slide lower with a disassembly tool and disassemble the rear in the direction which the arrow points to.



1) Take care of not scratching on the slide upper and lower.  
2) Use a disassembly tool.

10

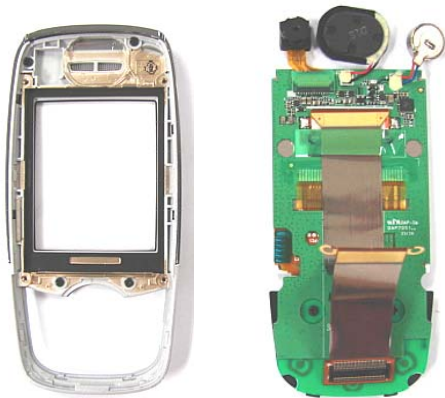
1) Take off camera, speaker and motor.



1) Pay special attention to not scratching on FPCB and damaging on nearby components.

11

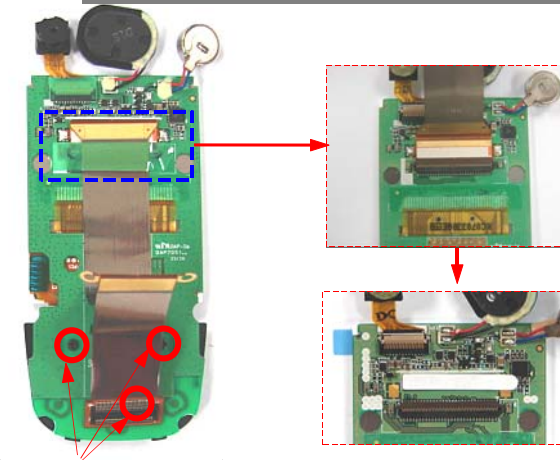
1) Take away SUB PBA from the slide upper.



1) Be careful of not scratching on LCD.  
2) Be aware of dust inside the main window of slide upper.

12

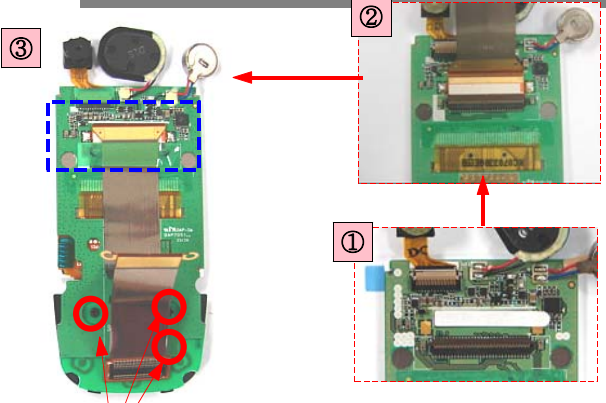

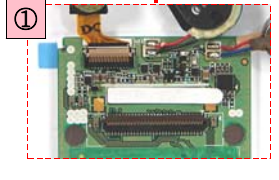
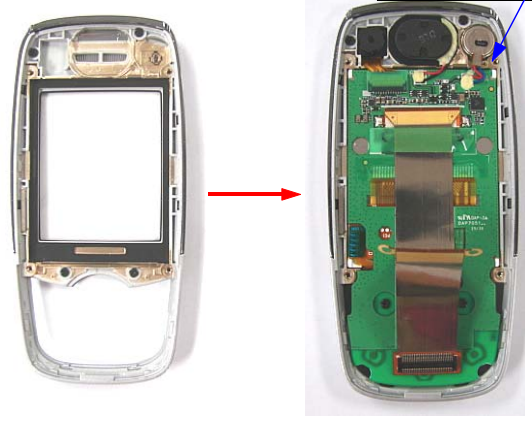
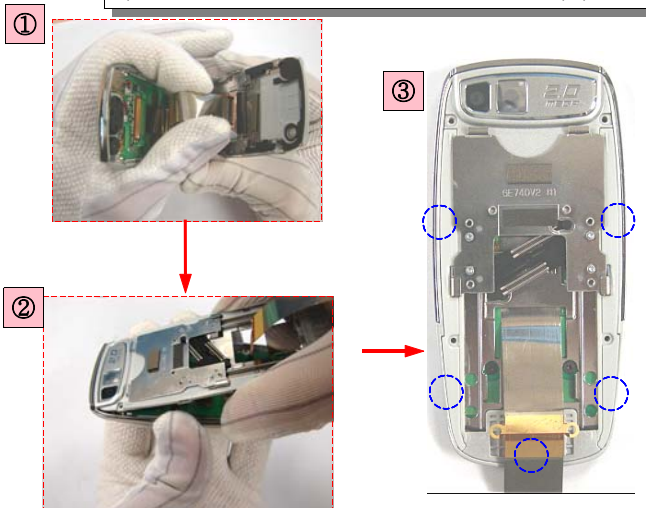


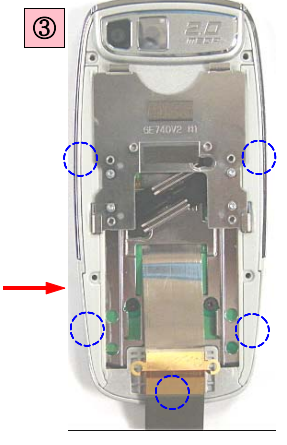
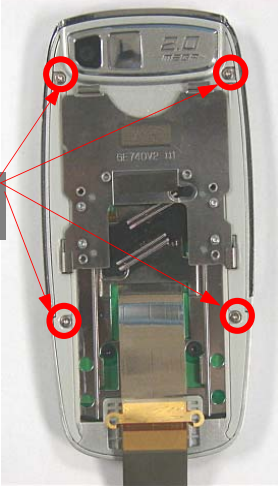
1) Remove a green insulation tape.  
2) Remove soldered joints on both sides of FPCB.  
3) Take an FPCB off.  
4) Unscrew 3 screws at the bottom of SUB PBA.



1) Unscrew screws.

1) Pay special attention to surrounding components when using a soldering iron.  
2) Use a cruciform screwdriver.

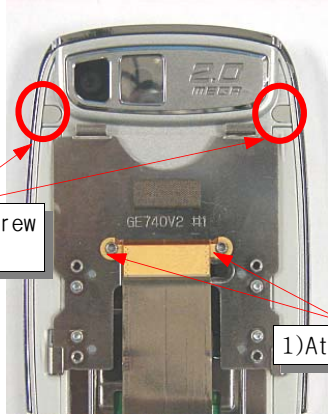
### 5-3-2. Assembly

<p><b>1</b></p> <ol style="list-style-type: none"> <li>1) Adhere a conductivity tape above the zip connector.</li> <li>2) Insert an FPCB into the zip connector and solder both sides of FPCB.</li> <li>3) Put a green insulation tape on FPCB standing on the white silk line.</li> <li>4) Tighten 3 screws with a SUB keypad.</li> </ol>  <p><b>2</b></p>  <p><b>3</b></p>  <p><b>4) Tighten screws.</b></p>	<p><b>2</b></p> <ol style="list-style-type: none"> <li>1) Put a sub PBA on slide upper.</li> <li>2) Make camera, speaker and motor reach safe.</li> </ol> <p><b>*Attention!!</b> Let motor wire be inside a groove( ) surely.</p> 
<p>1) Pay special attention to not scratching on FPCB and damaging on nearby components.</p>	<p>1) Pay special attention to not scratching on FPCB. 2) Be aware of dust inside the main window of slide upper.</p>
<p><b>3</b></p> <ol style="list-style-type: none"> <li>1) After putting slide hinge up, insert slide FPCB into the hole.(1)</li> <li>2) Put the top of slide lower into the hook first.(2)</li> <li>3) Press down 5 hooks of slide lower.(3)</li> </ol>  <p><b>1</b></p>  <p><b>2</b></p>  <p><b>3</b></p> 	<p><b>4</b></p> <p><b>1) Tighten 4 screws.</b></p>  <p><b>1)Tighten screws.</b></p>
<p>1) Pay special attention to not cracking on FPCB.</p>	<p>1) Use a cruciform screwdriver.</p>



**5**

- 1) Attach screw caps to screws at the top of slide lower in accord with the direction(right or left)
- 2) Attach slide FPCB to the slide hinge in accord with 2 holes on FPCB.




1)Attach screw caps.

1)Attach FPCB.

1) Make sure that you can distinguish between right and left screw caps.

**6**

- 1) Put front into the 2 hooks at the top of slide hinge.
- 2) Tighten 4 screws.
- 3) Put main keypad on front.



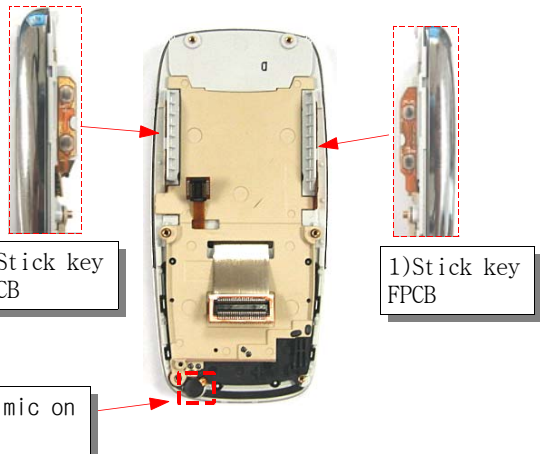
1)Insert 2 hooks into front.

2)Tighten screws.

1) Use a cruciform screwdriver.  
2) After putting front into 2 hooks, tighten screws.

**7**

- 1) After putting a shield can on front, stick volume key and camera key FPCB to front.
- 2) Put mic on front in accord with guide.



1)Stick key FPCB

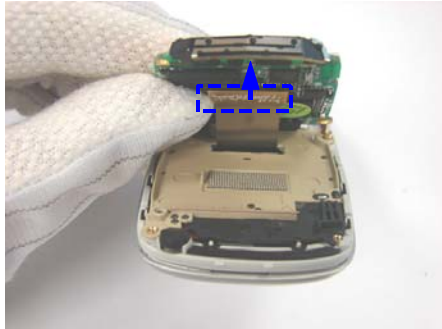
1)Stick key FPCB

2)Put mic on front

1) Be aware of not damaging on camera key and volume key FPCBs.  
2) Make sure that mic is put into guide hole in good position.

**8**

- 1) Insert slide FPCB into the connector of main PBA.



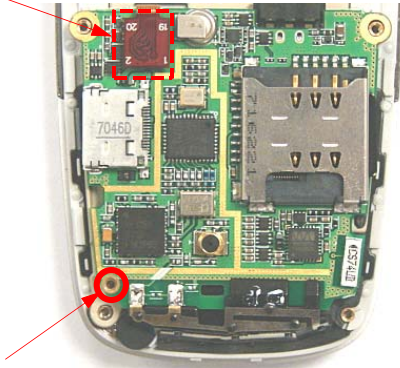
1) Make sure that slide FPCB and connector are assembled well.



9

- 1) Insert key FPCB into the connector of main PBA.
- 2) Tighten a screw at the bottom of main PBA.

- 1) Insert FPCB into the connector.



- 2) Tighten a screw.

10

- 1) Tighten 4 screws at the top and bottom of rear.
- 2) Tighten 2 screws in the middle of rear.

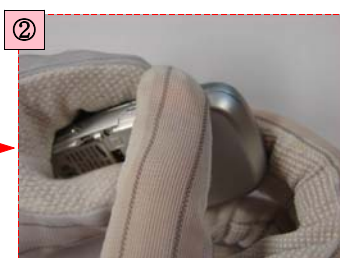


- 1) Make sure that key FPCB and connector are assembled well.
- 2) Use a cruciform screwdriver.

- 1) Make sure that you can distinguish between top-bottom and middle screws. Top and bottom screws are identical. But middle screws are different from them.
- 2) Use a cruciform screwdriver.

11

- 1) Insert rear cover hook into rear hole.(1)
- 2) Press hooks from the right side of phone to the left side of that.(2)



- 1) Be careful of not scratching on a rear cover and a rear.

