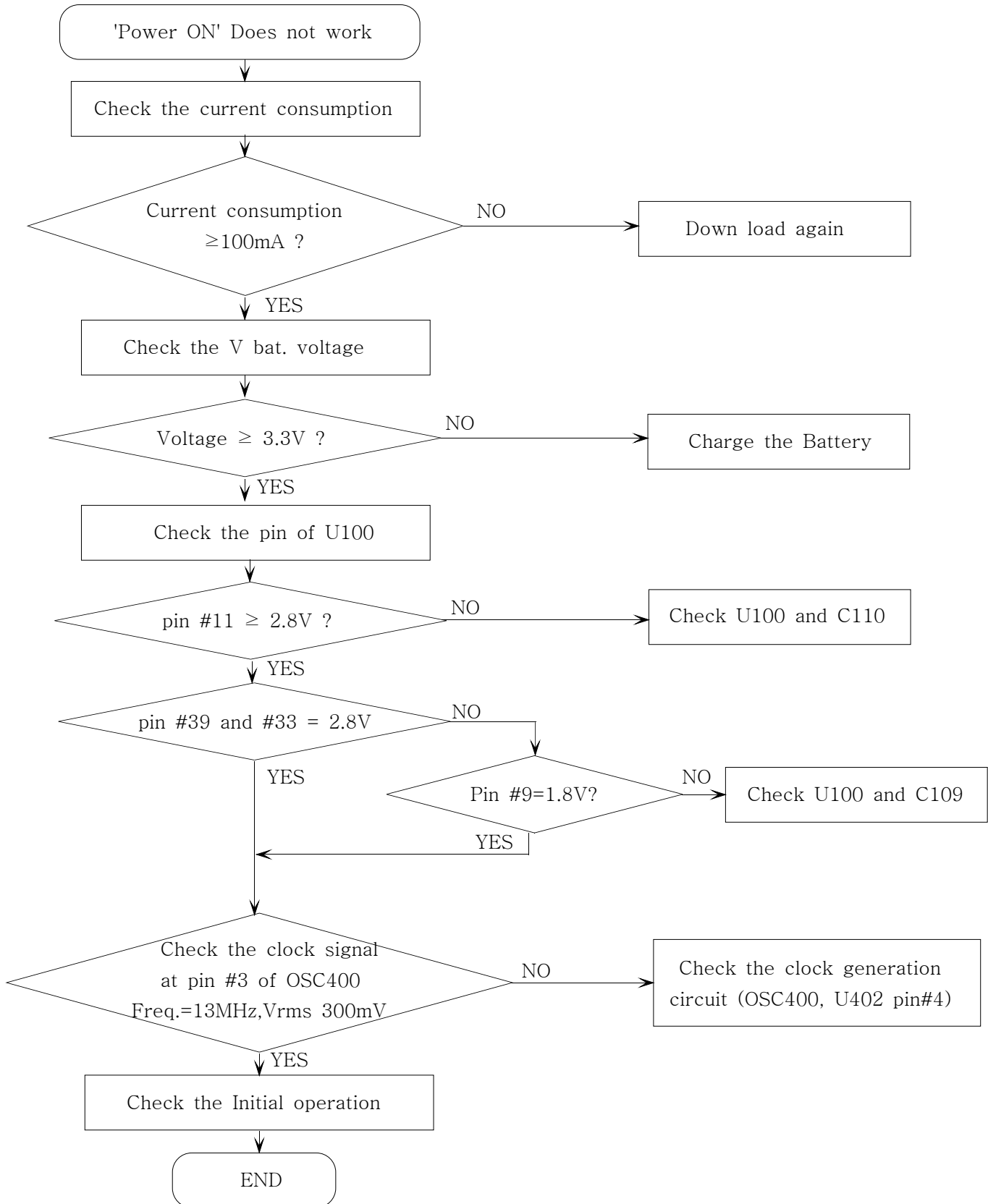
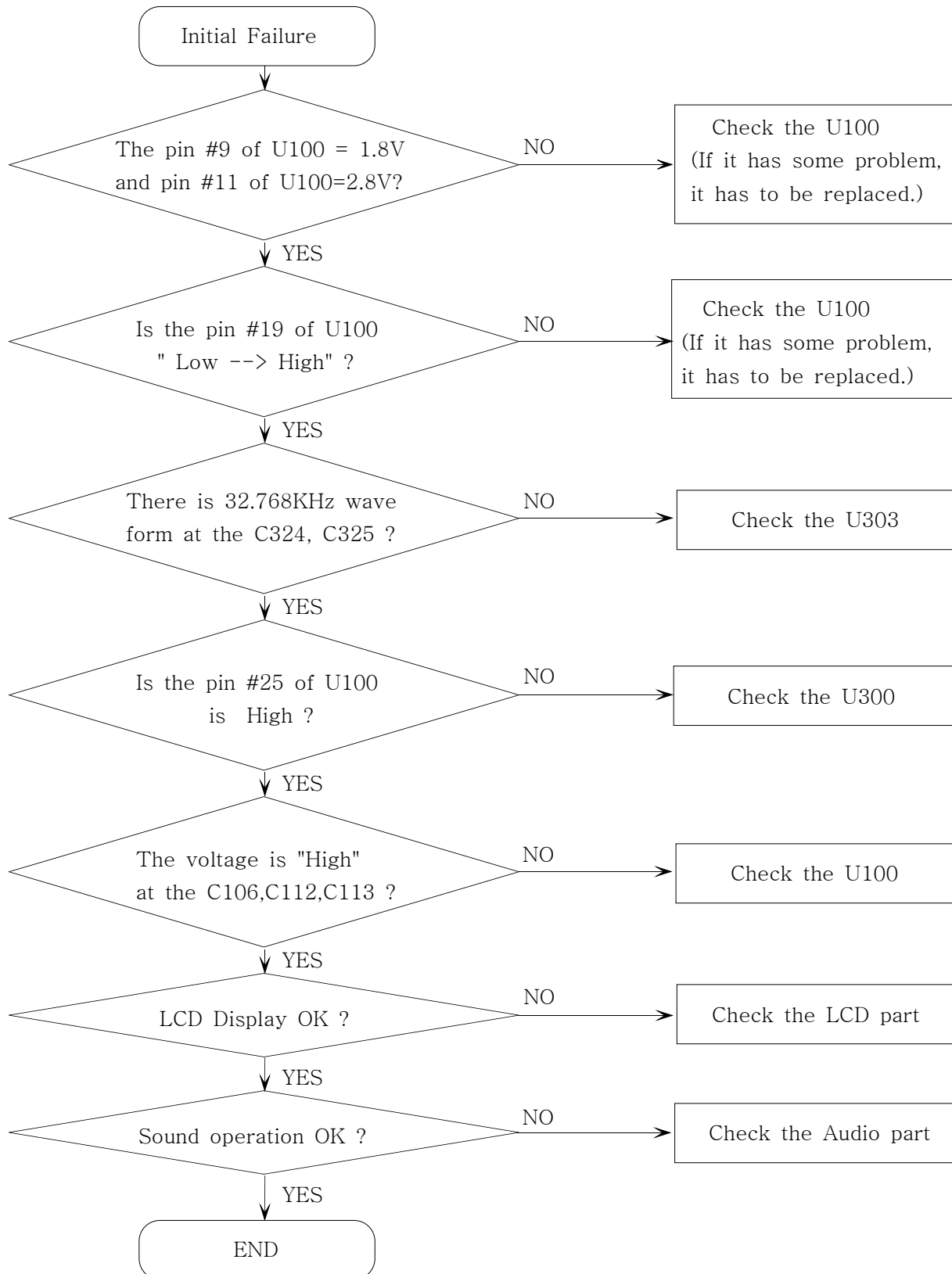


2. SGH-E715 Flow Chart of Troubleshooting

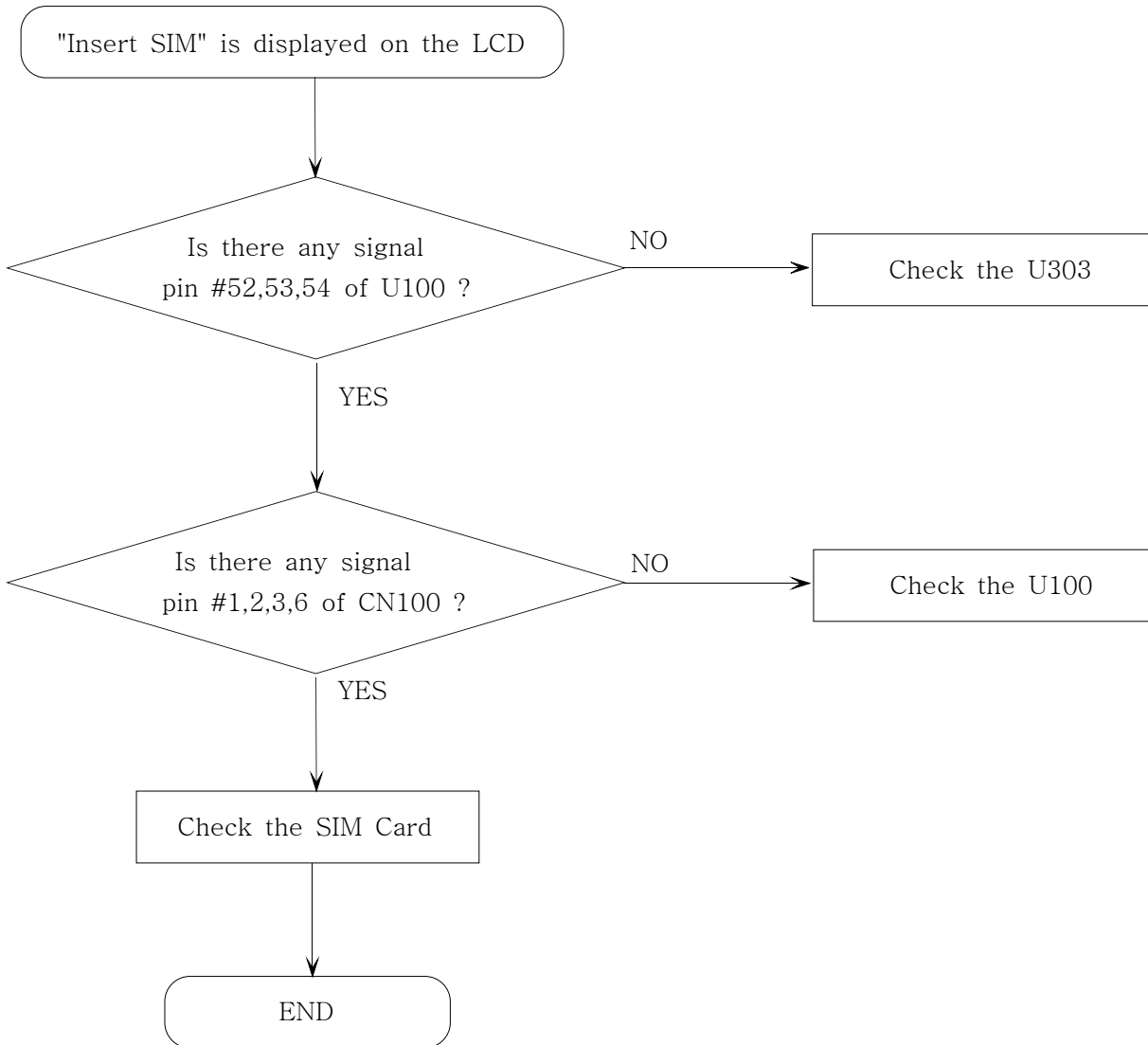
1. Power ON



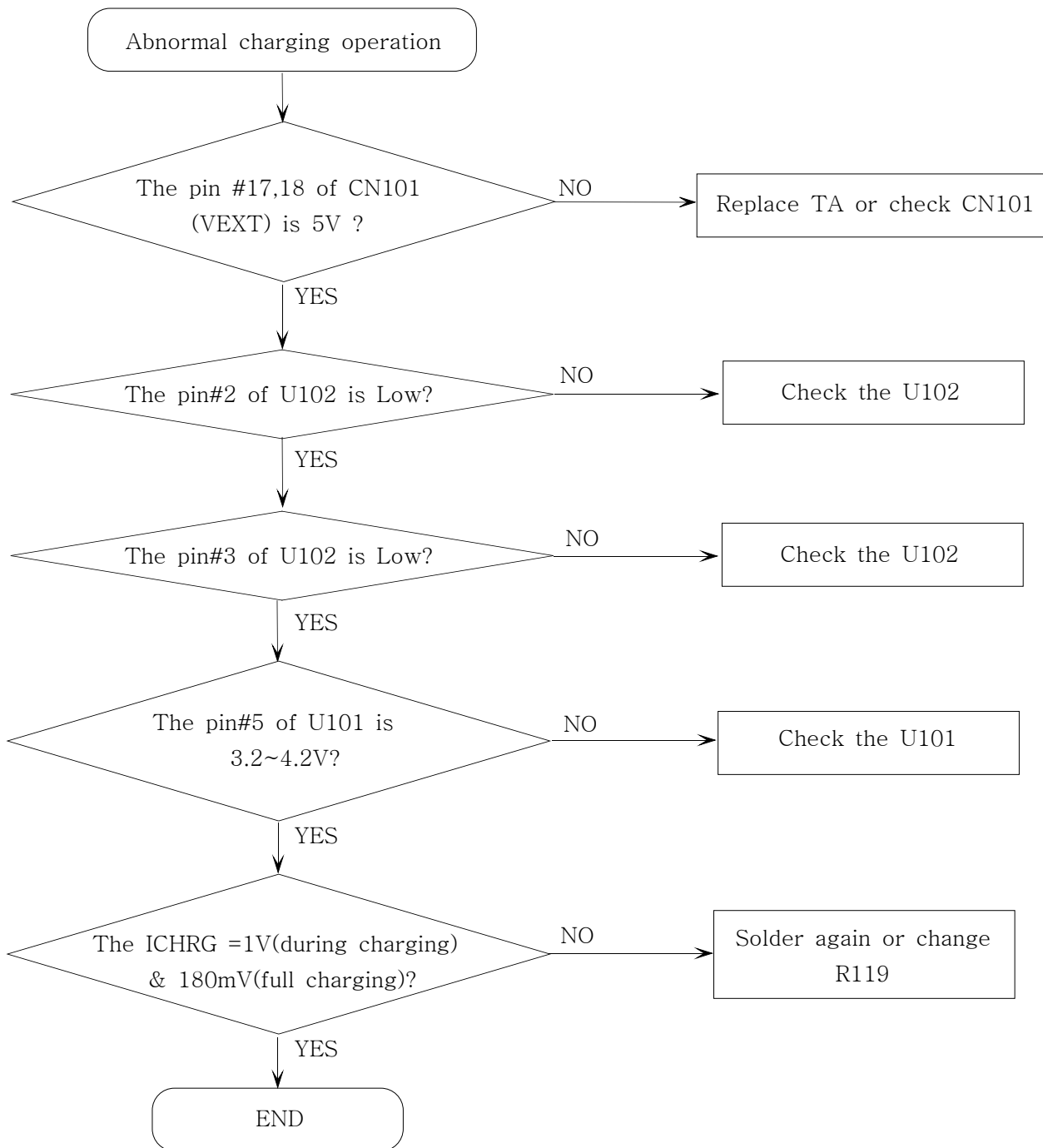
2. System Initial



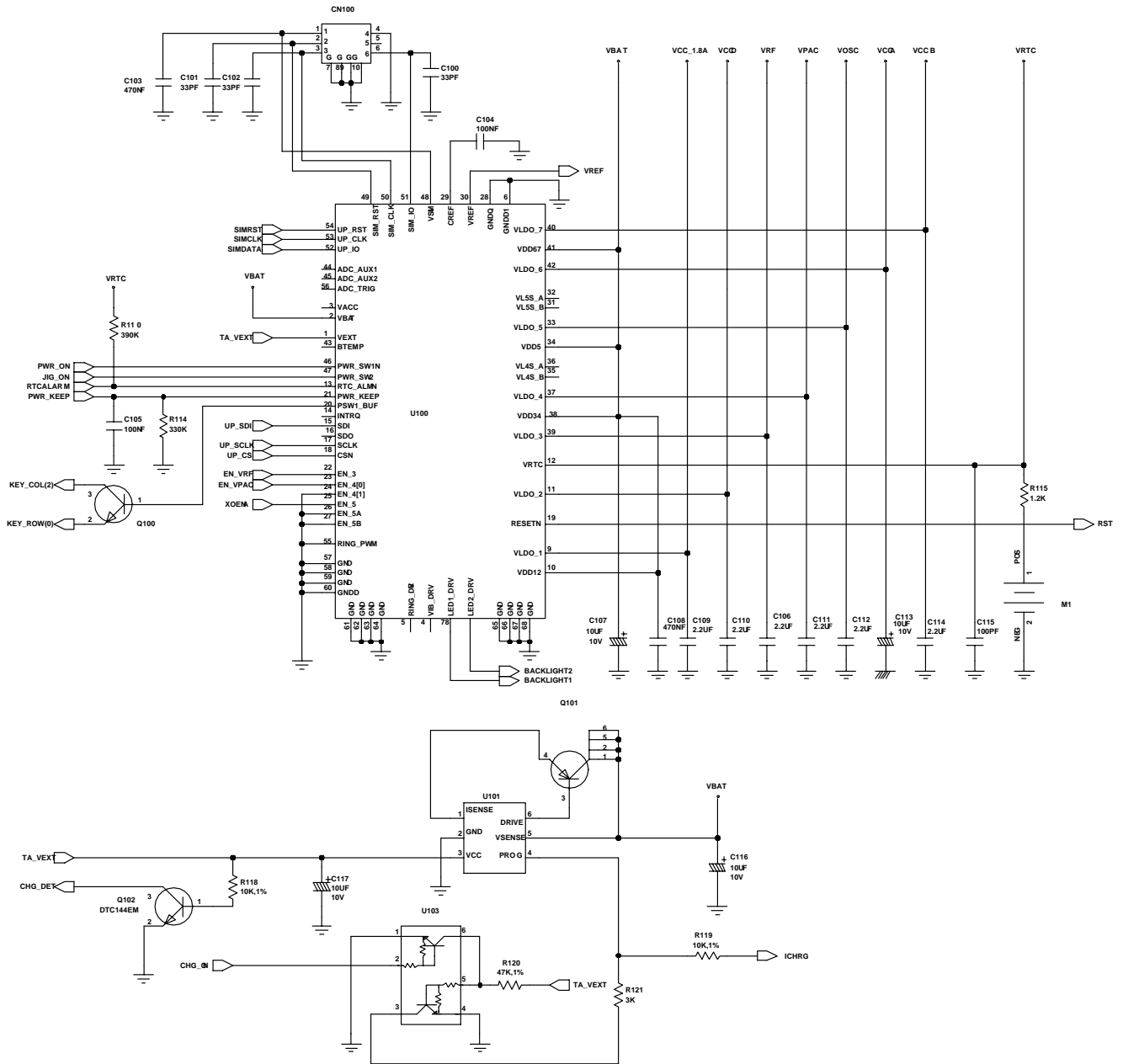
3. SIM Part



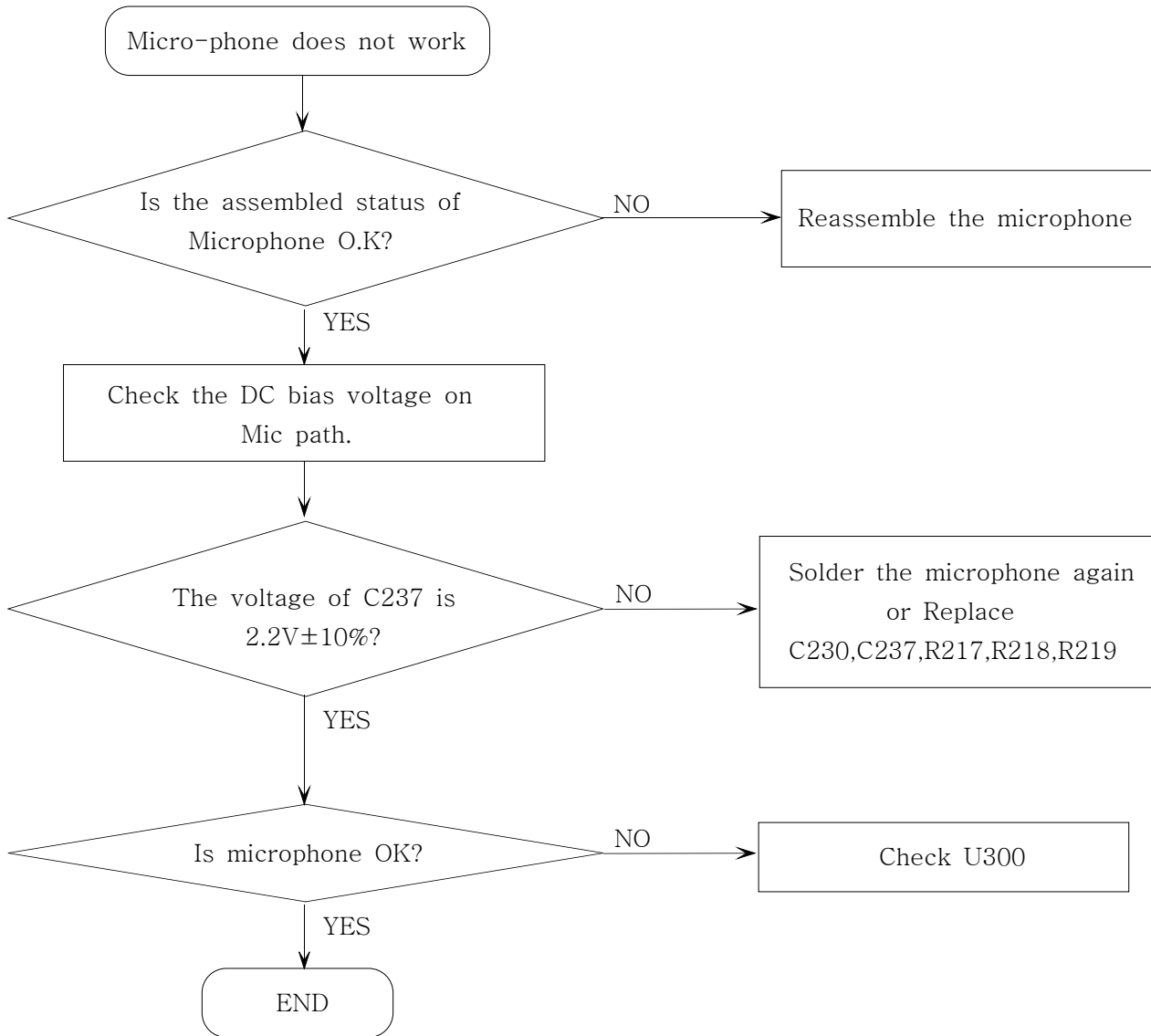
4. Charging Part



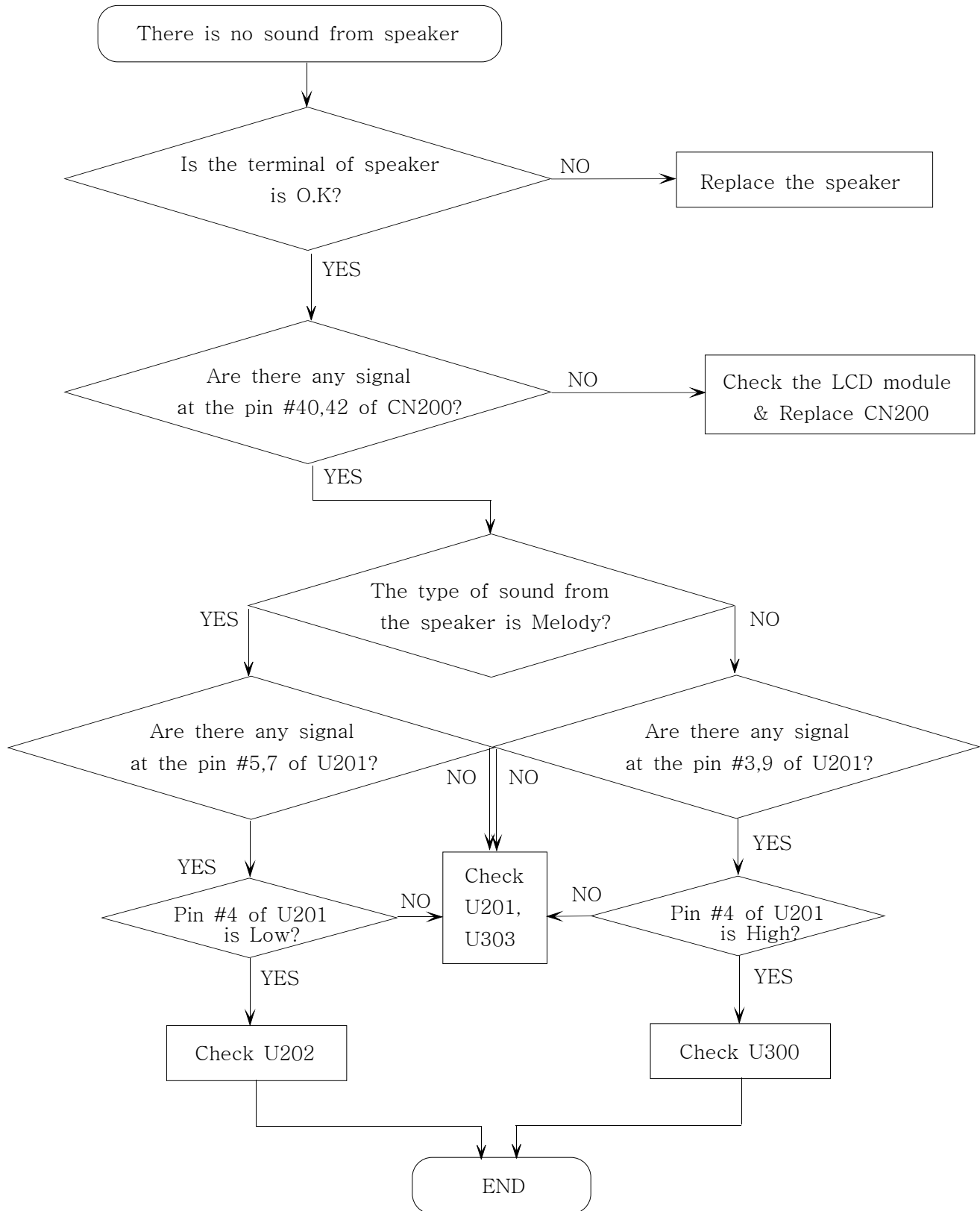
SGH-E715 Flow Chart of Troubleshooting and Circuit Diagrams

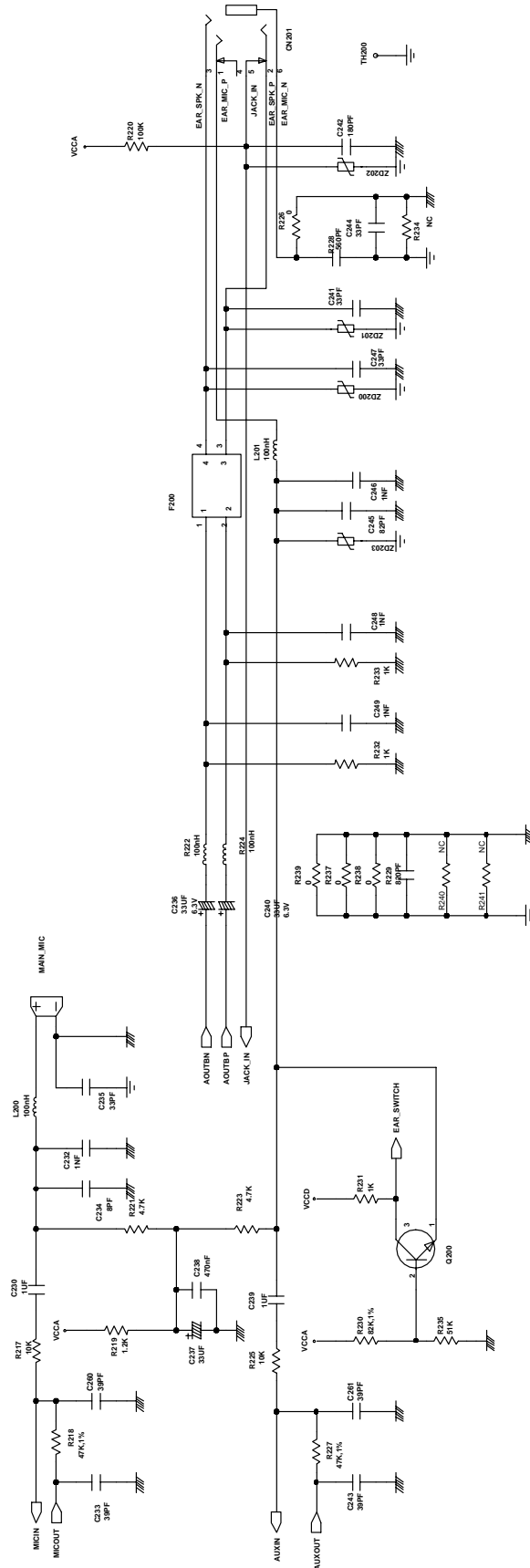


5. Microphone Part

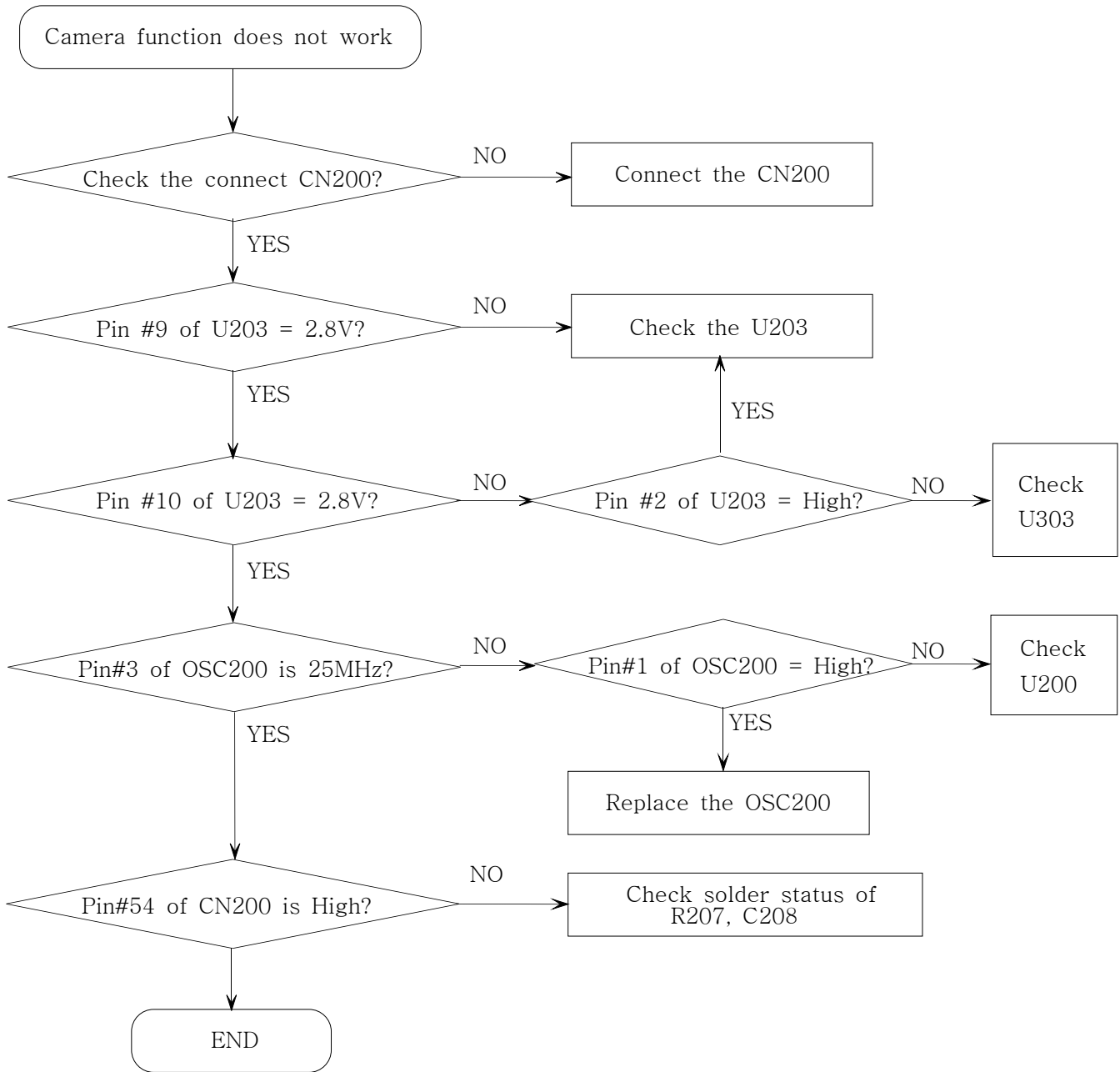


6. Speaker Part

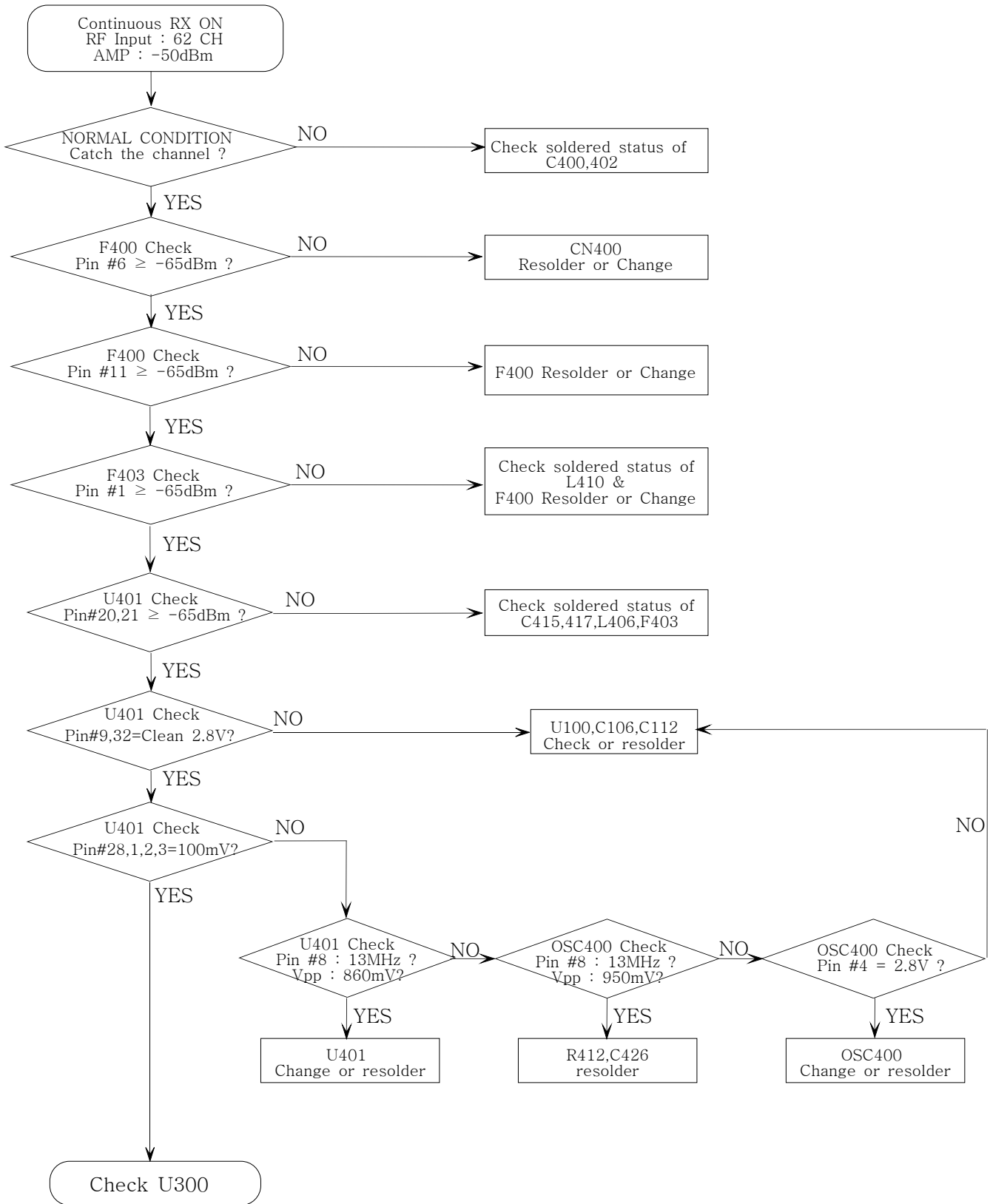




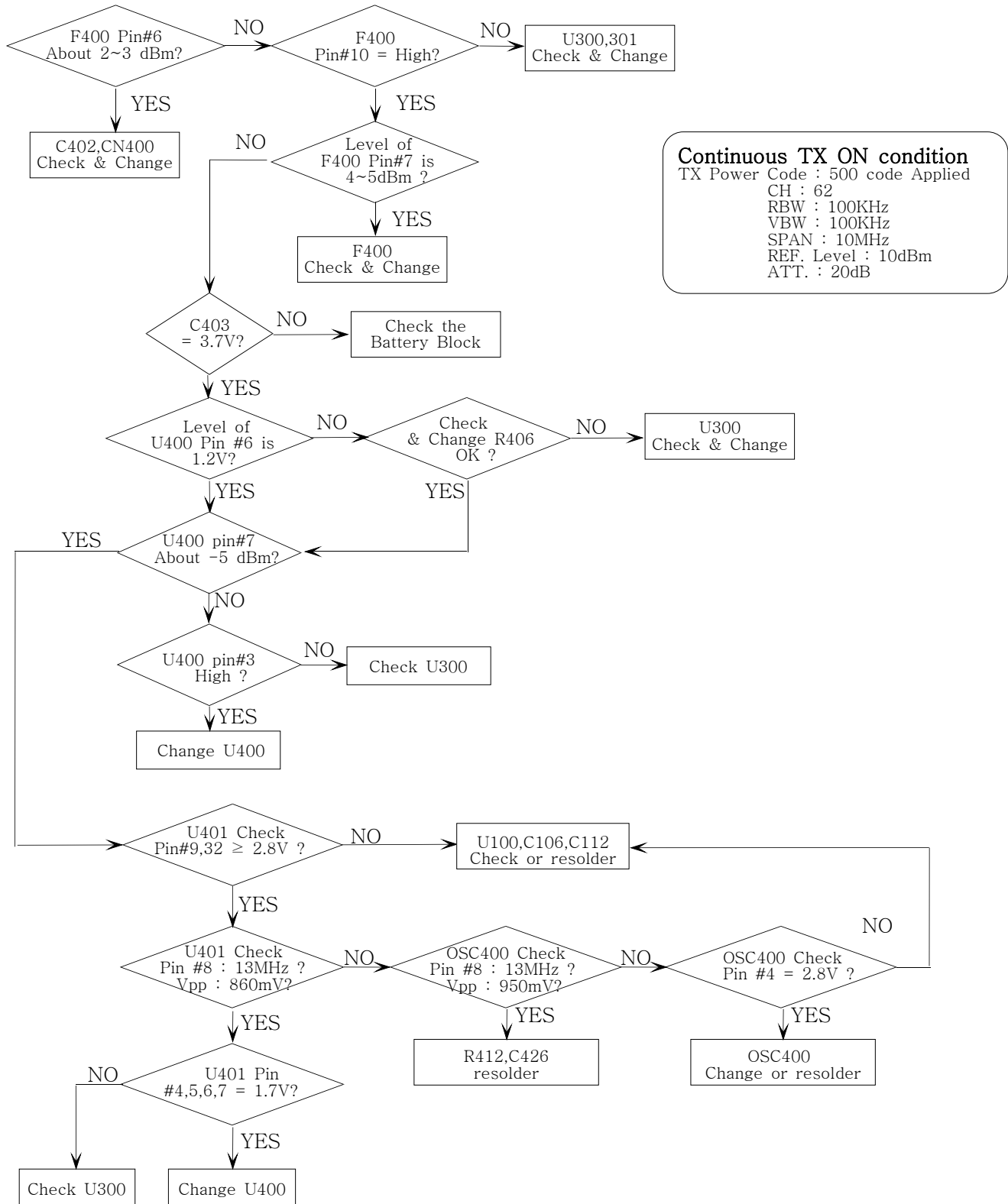
7. Camera Part



8. EGSM Receiver

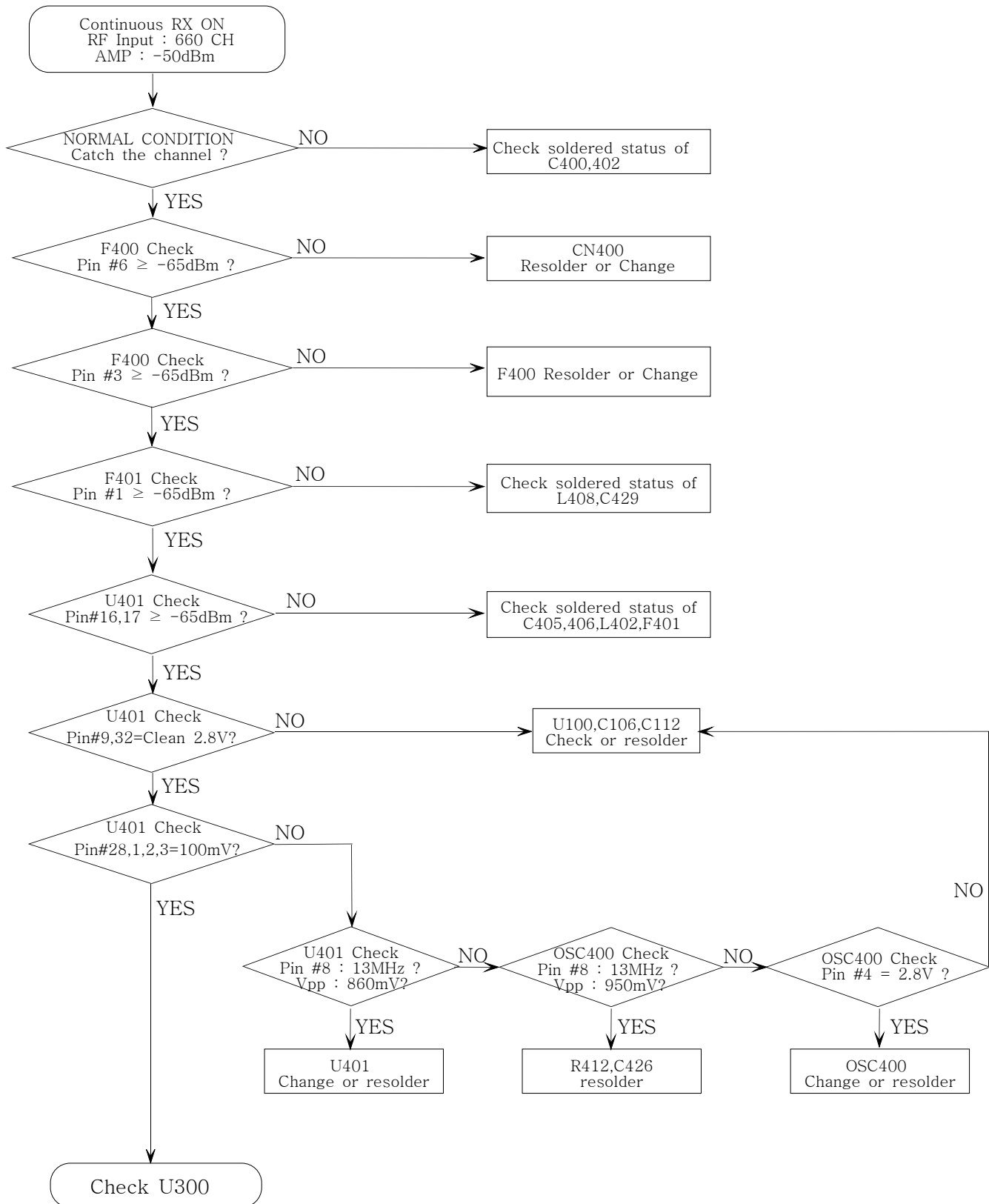


9. EGSM Transmitter



Continuous TX ON condition
 TX Power Code : 500 code Applied
 CH : 62
 RBW : 100KHz
 VBW : 100KHz
 SPAN : 10MHz
 REF. Level : 10dBm
 ATT. : 20dB

10. PCS Receiver



11. PCS Transmitter

