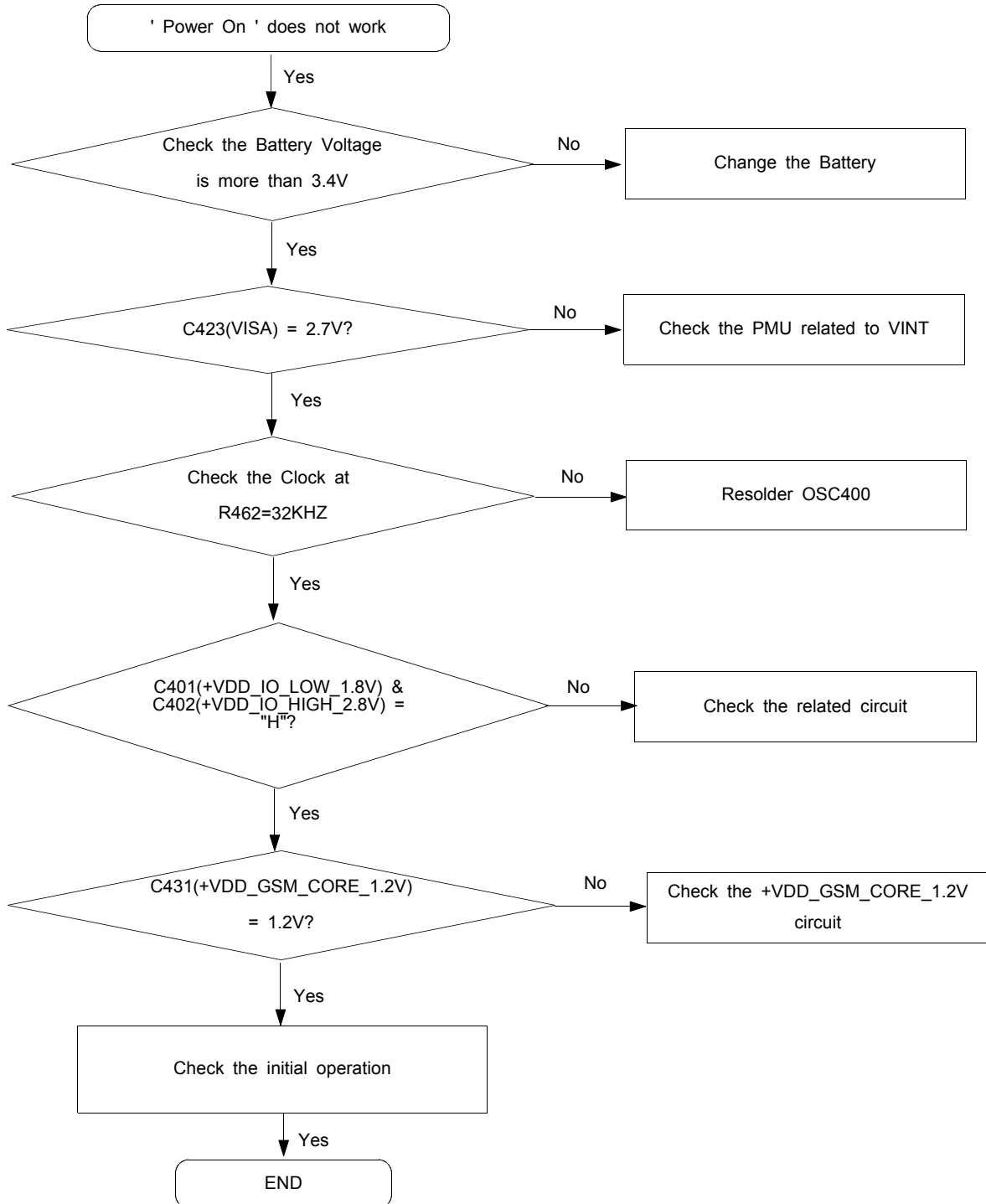
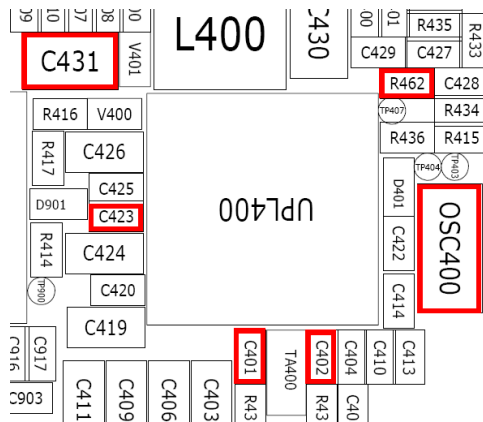
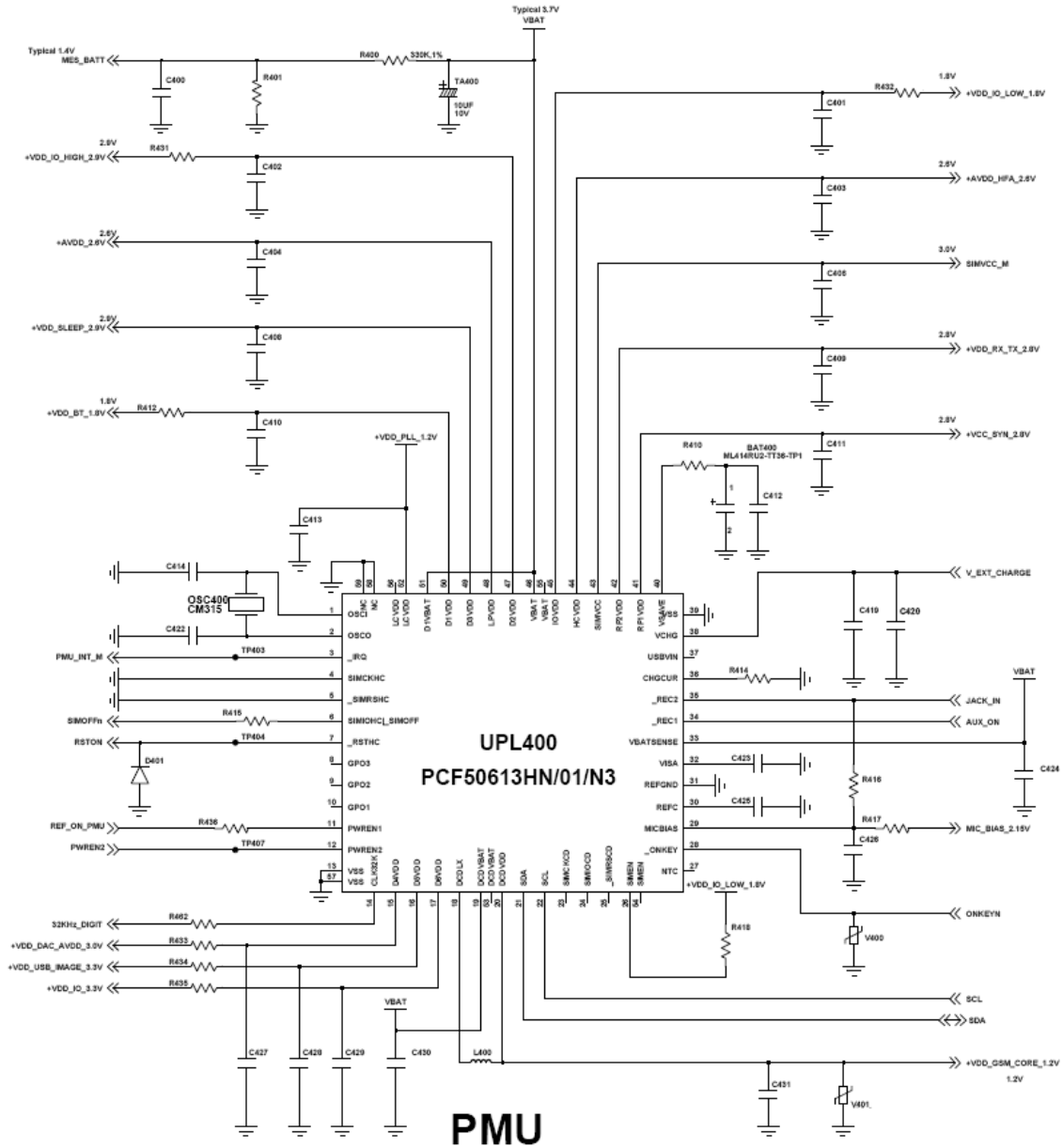


10. Flow Chart of Troubleshooting

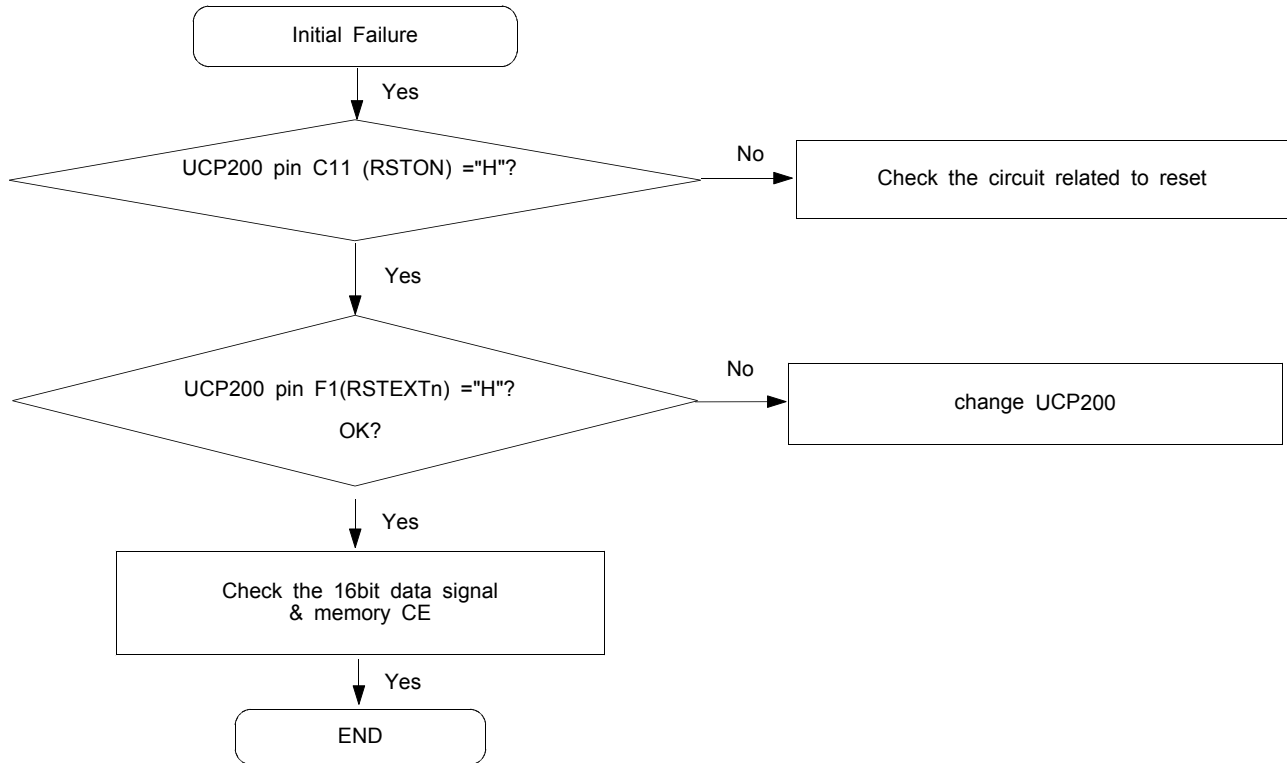
10-1. Power On

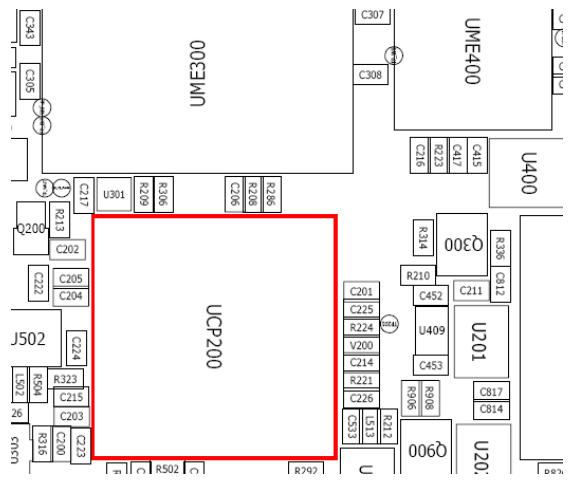
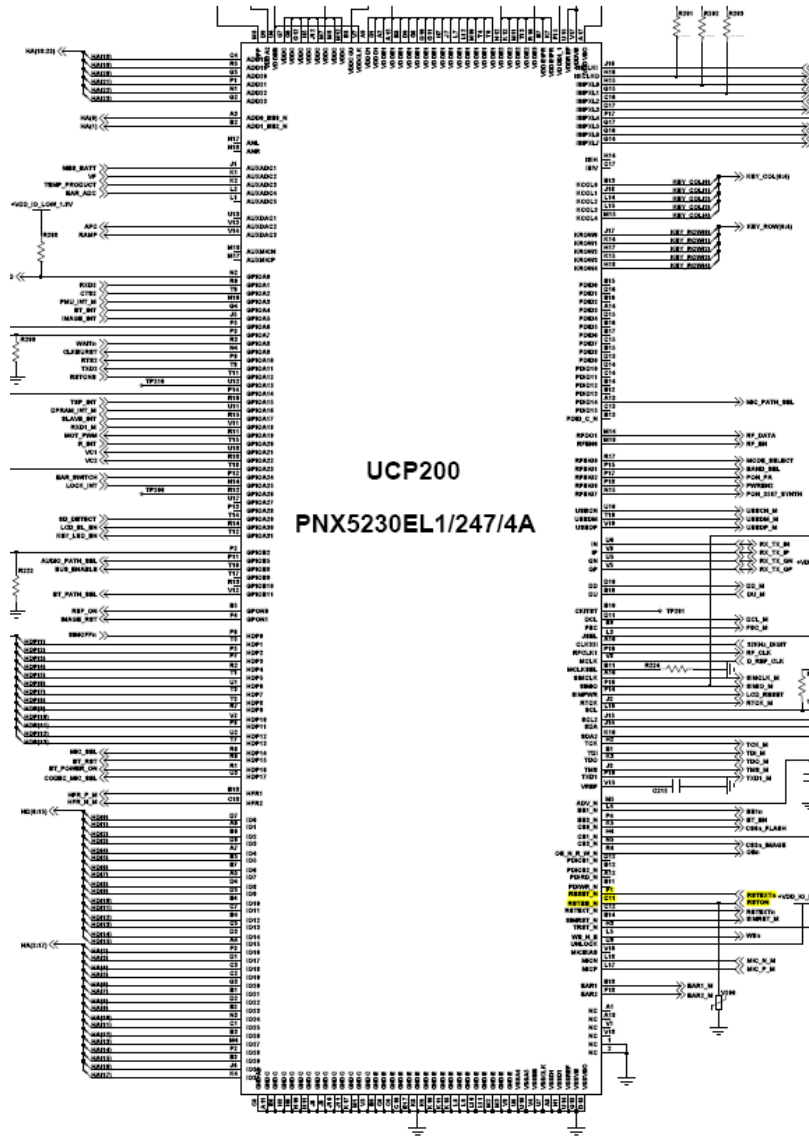


Flow Chart of Troubleshooting

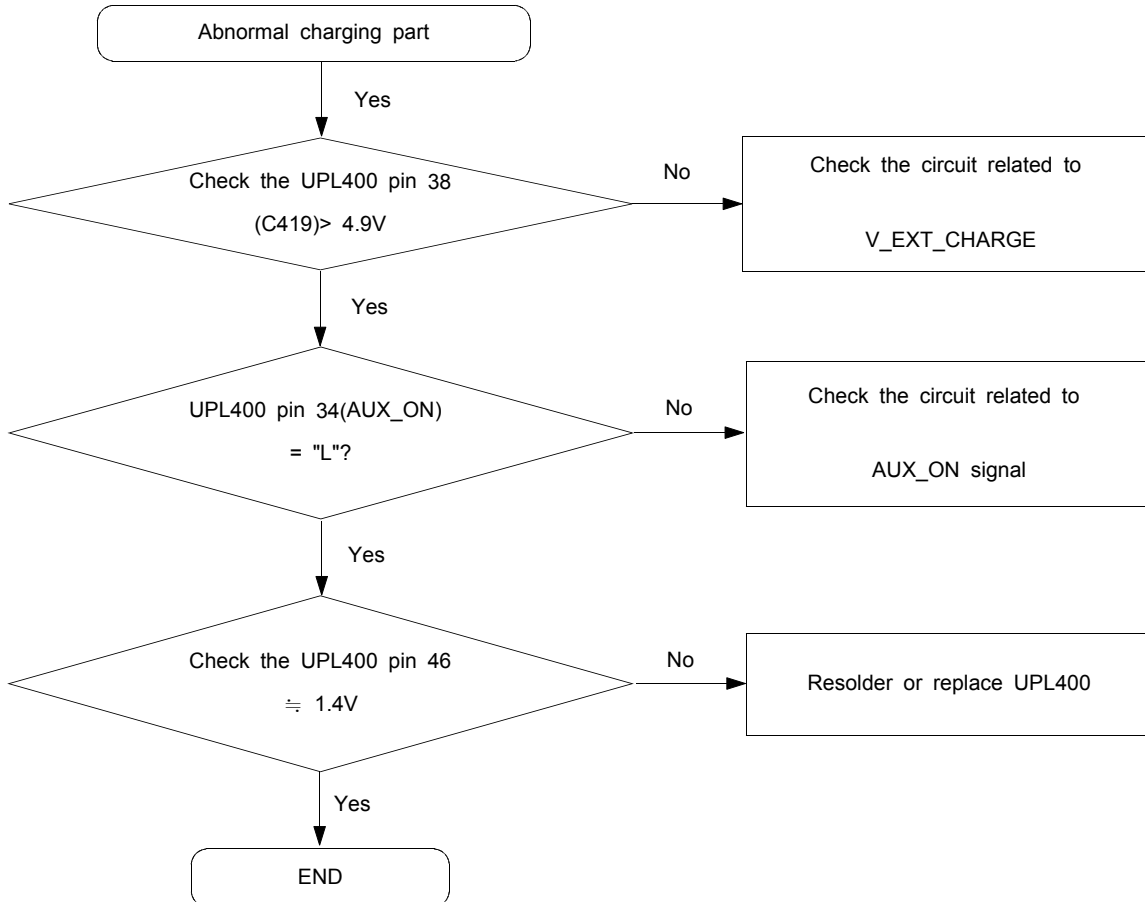


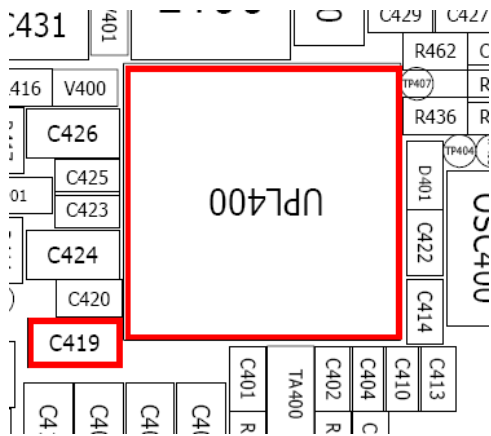
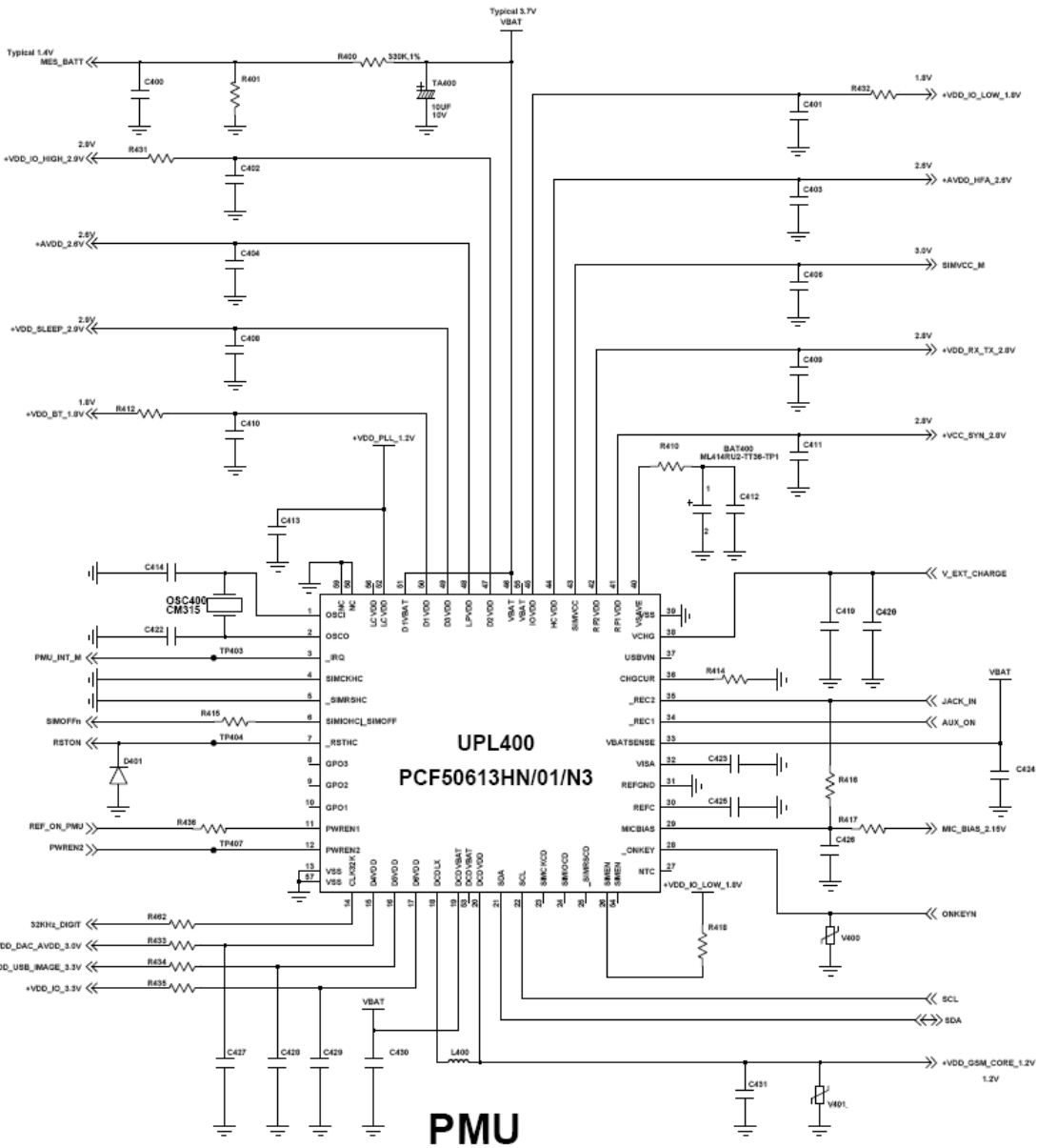
10-2. Initial





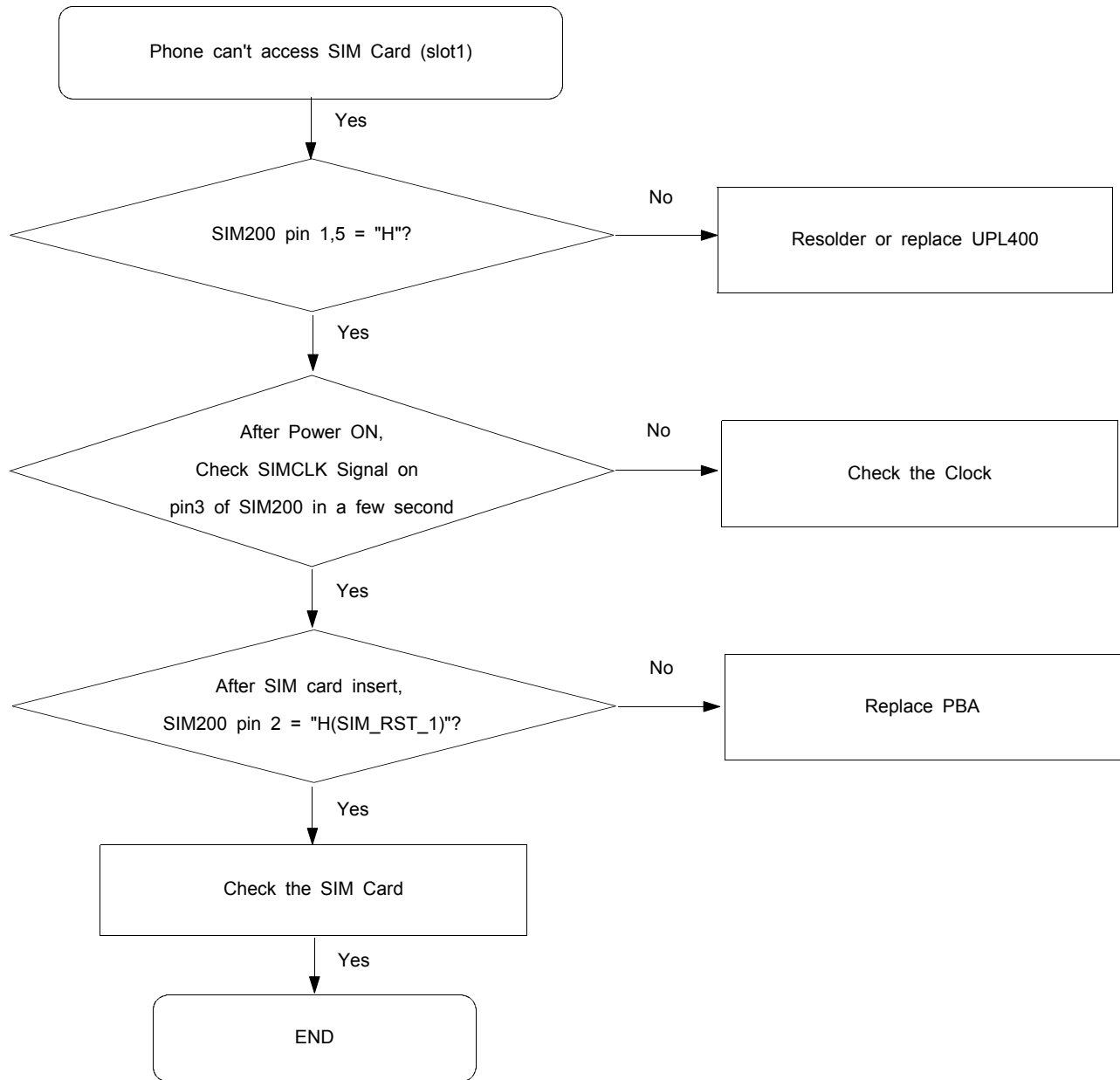
10-3. Charging Part

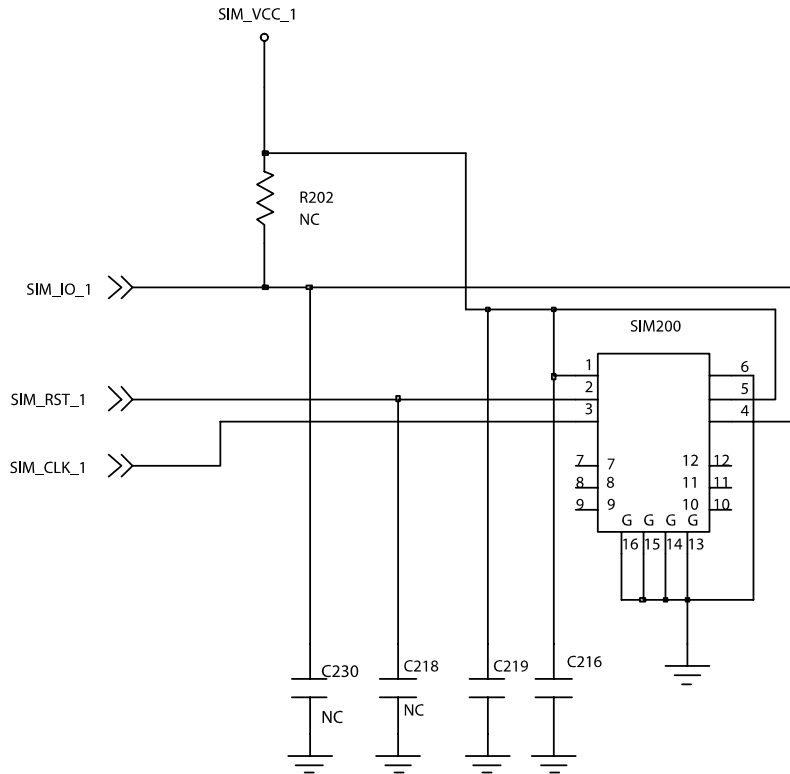




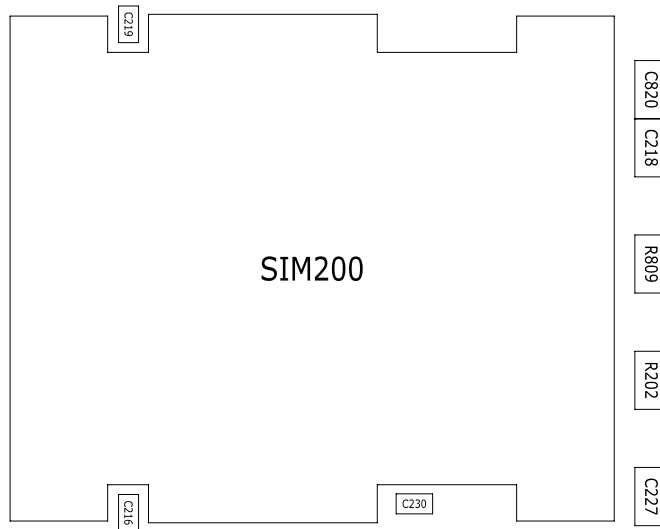
10-4. Sim Part

1)Master

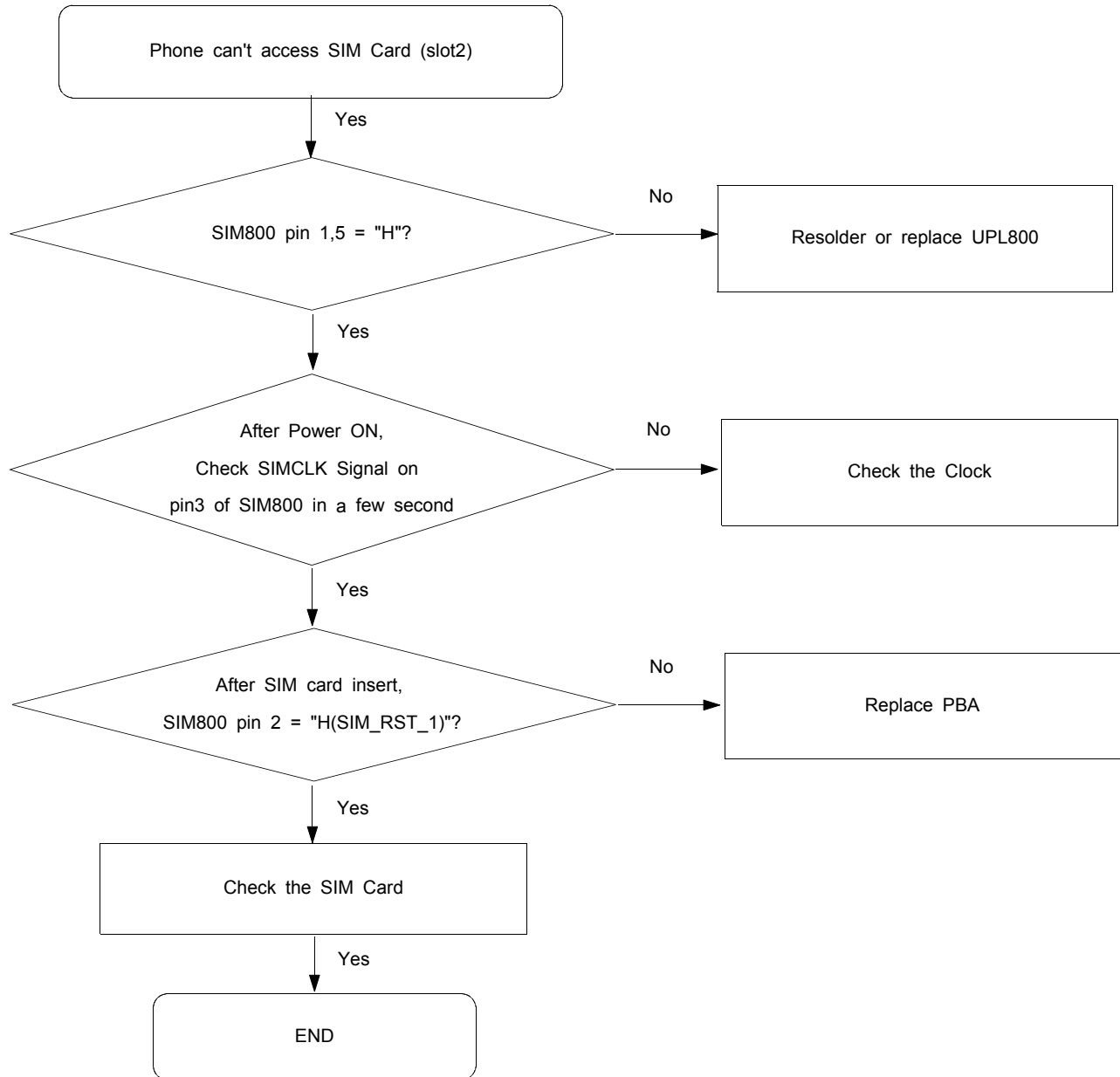


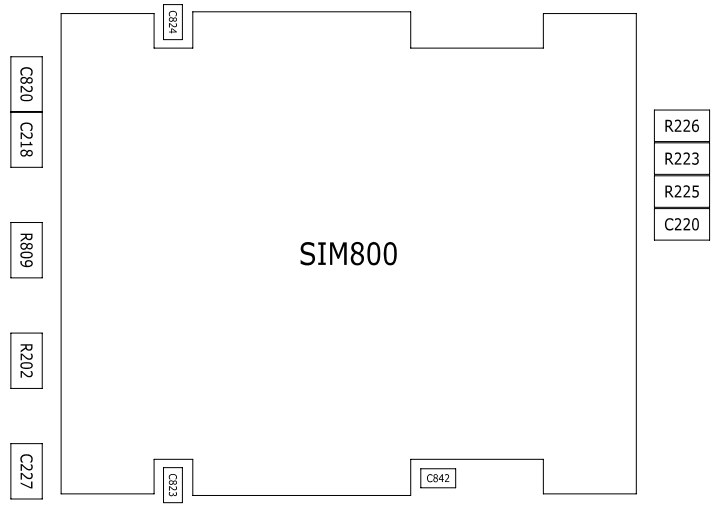
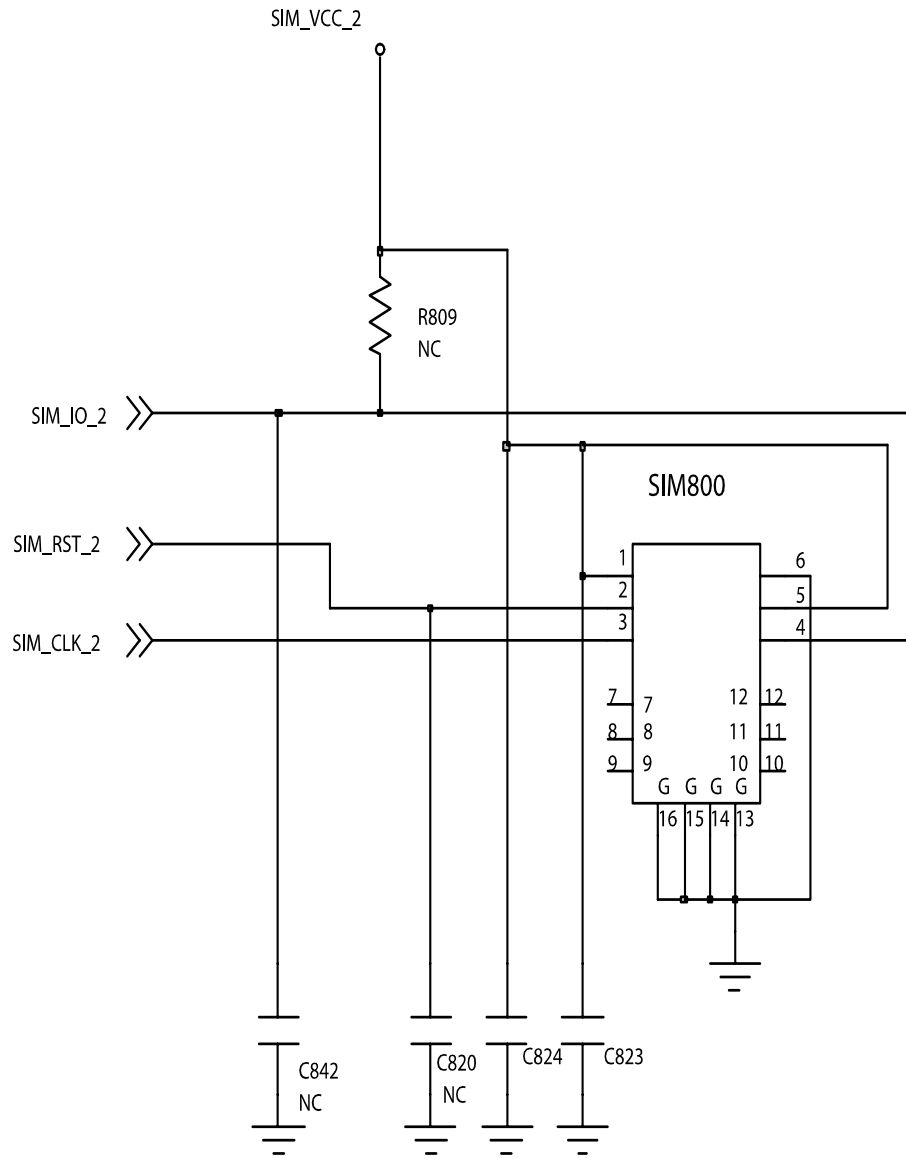


SIM1 [MASTER]

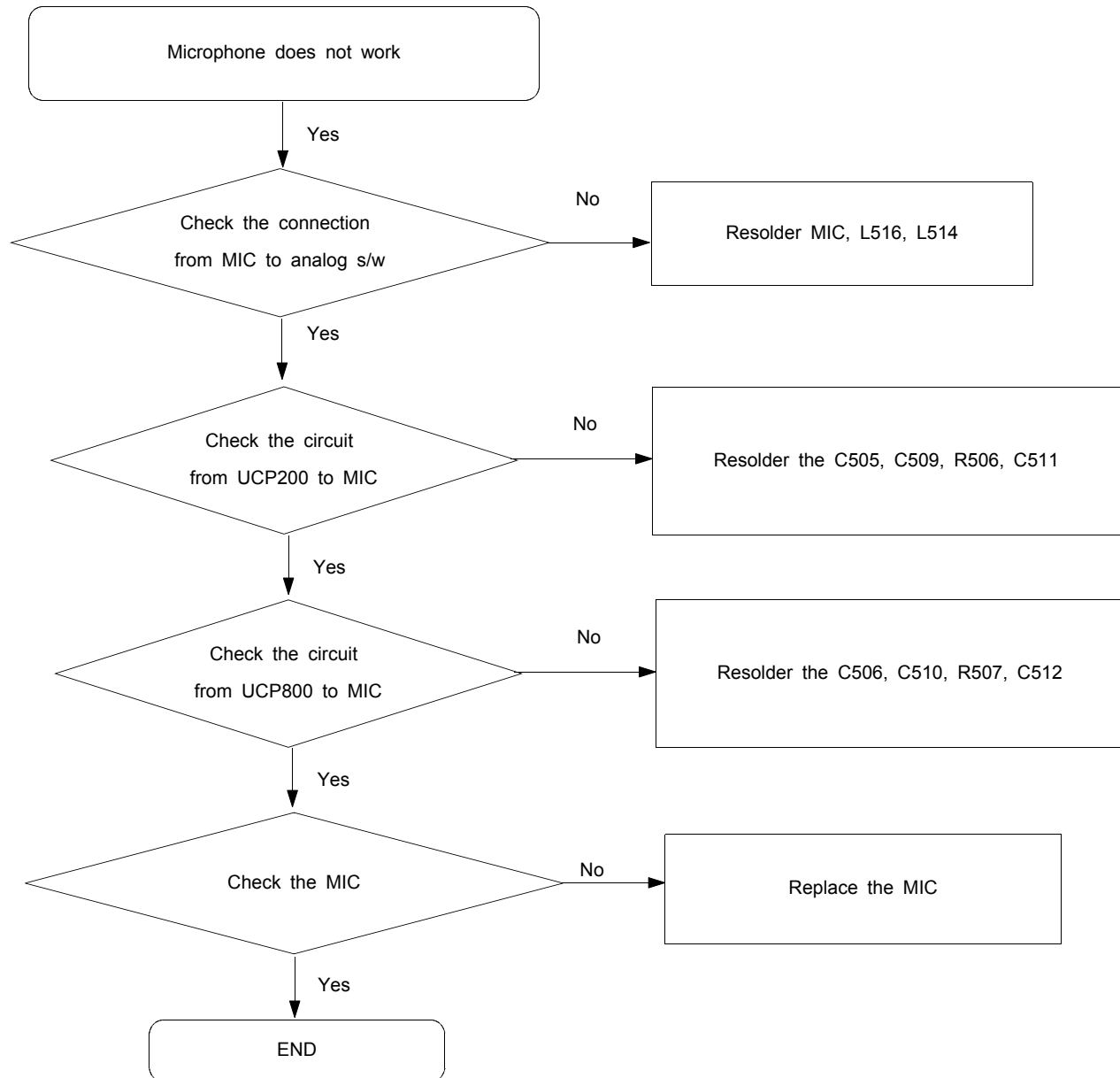


2)Slave

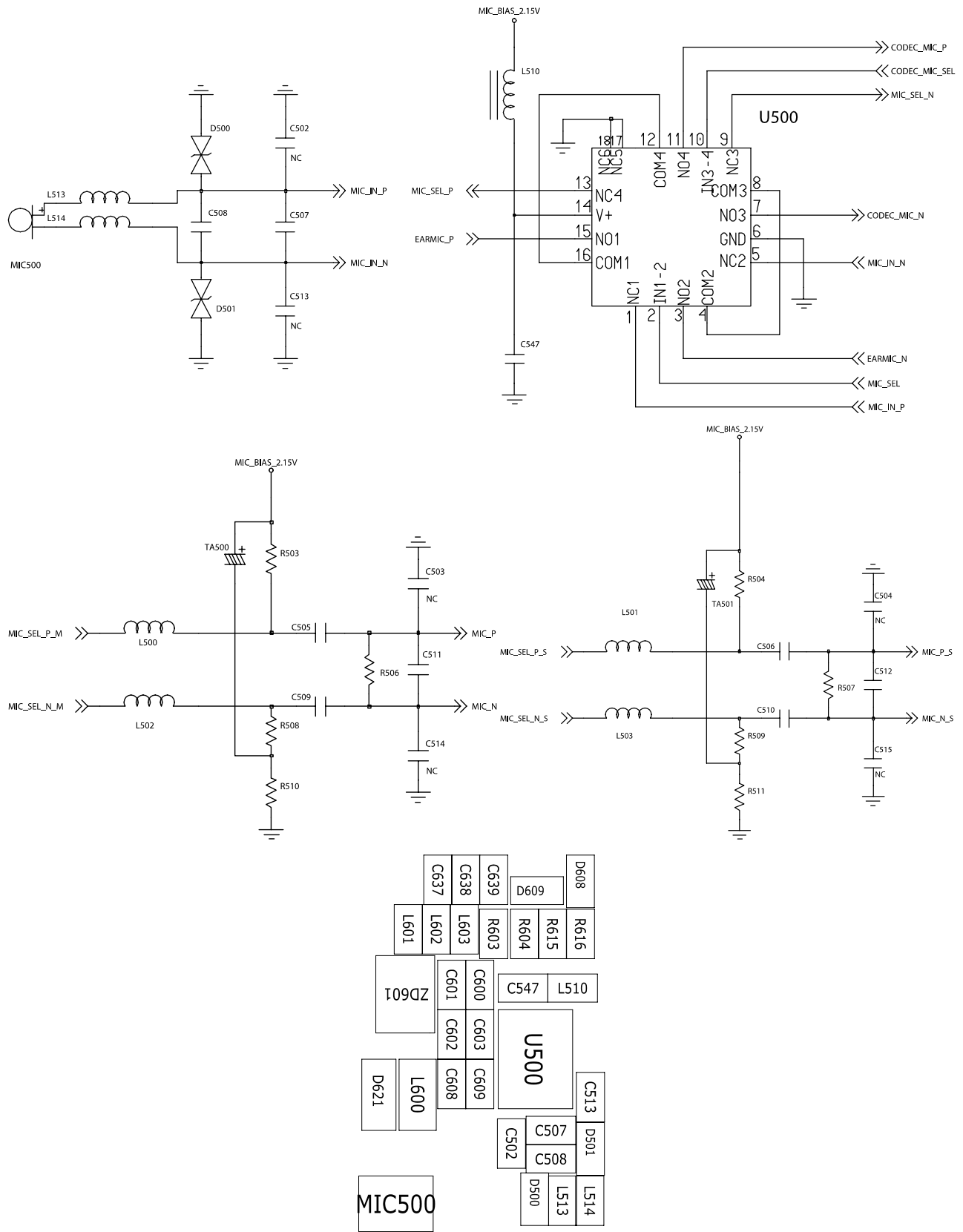




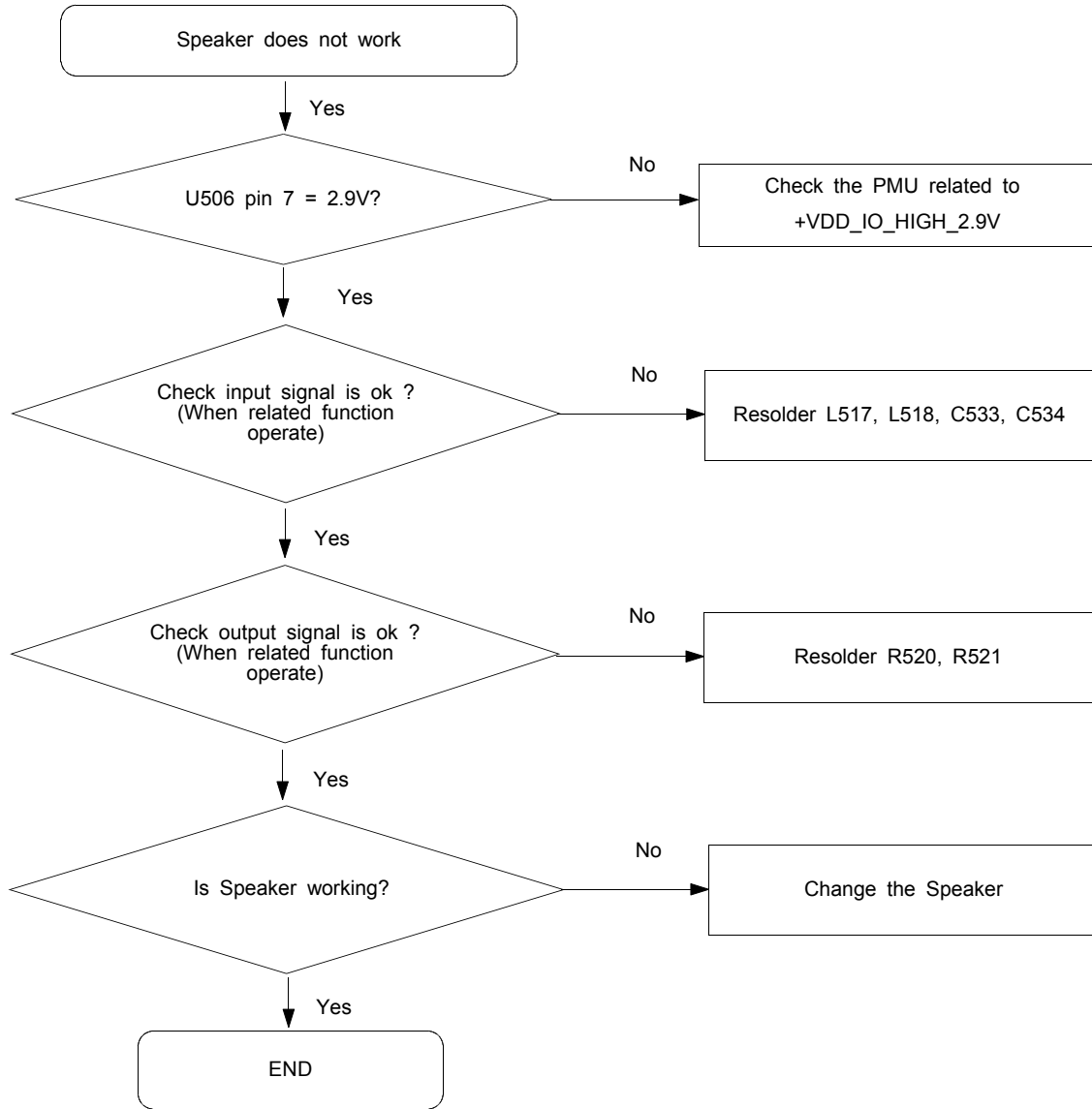
10-5. Microphone Part

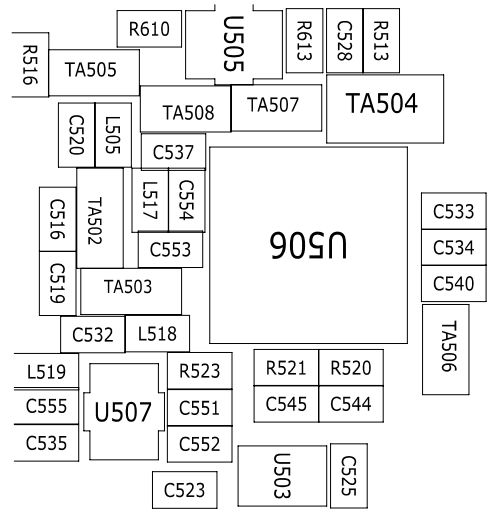
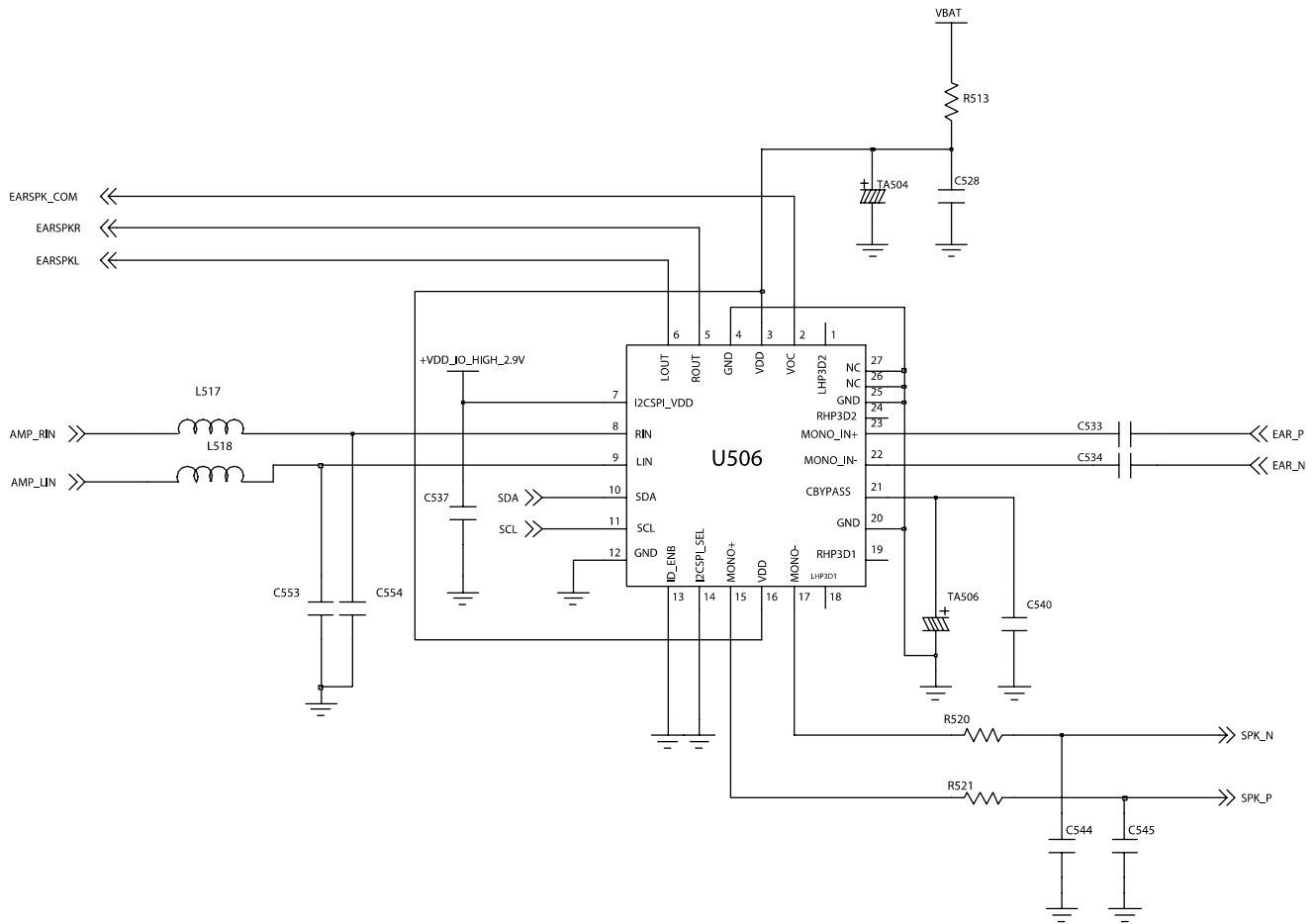


Flow Chart of Troubleshooting

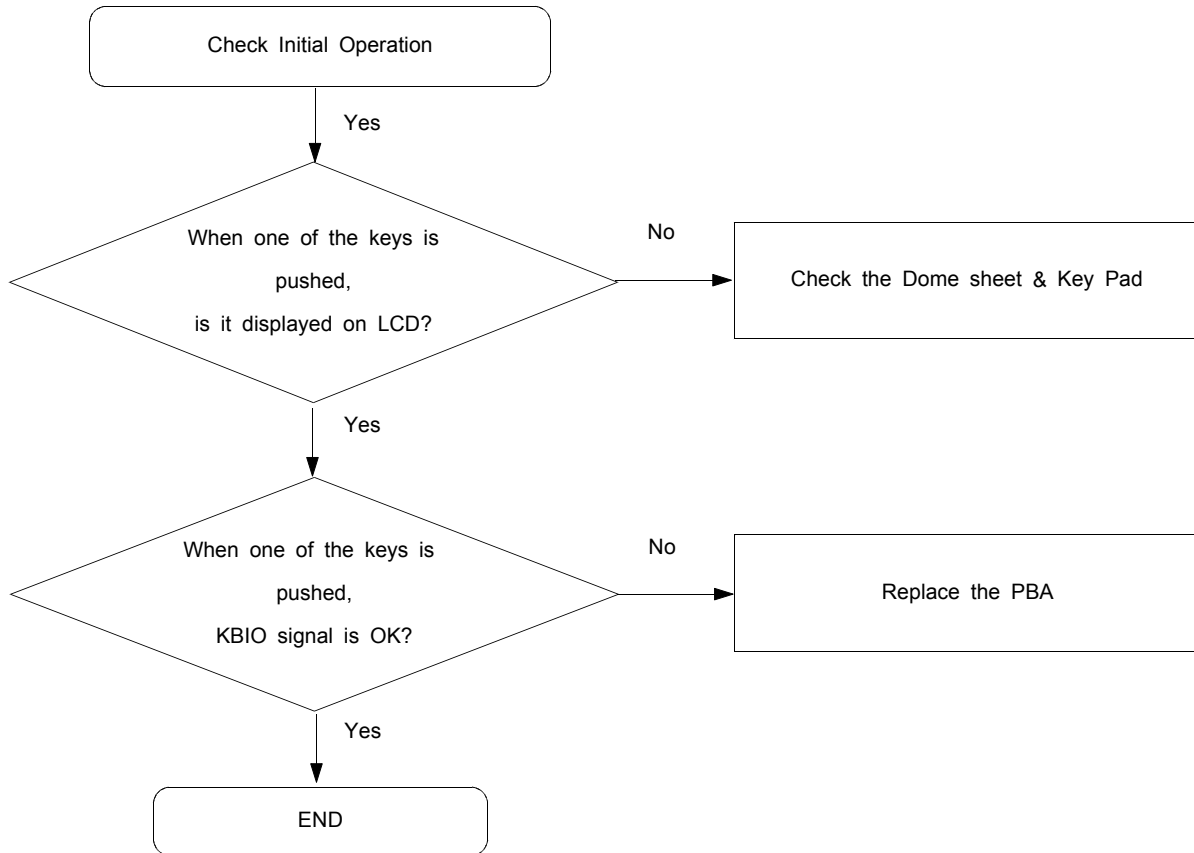


10-6. Speaker Part(Melody)

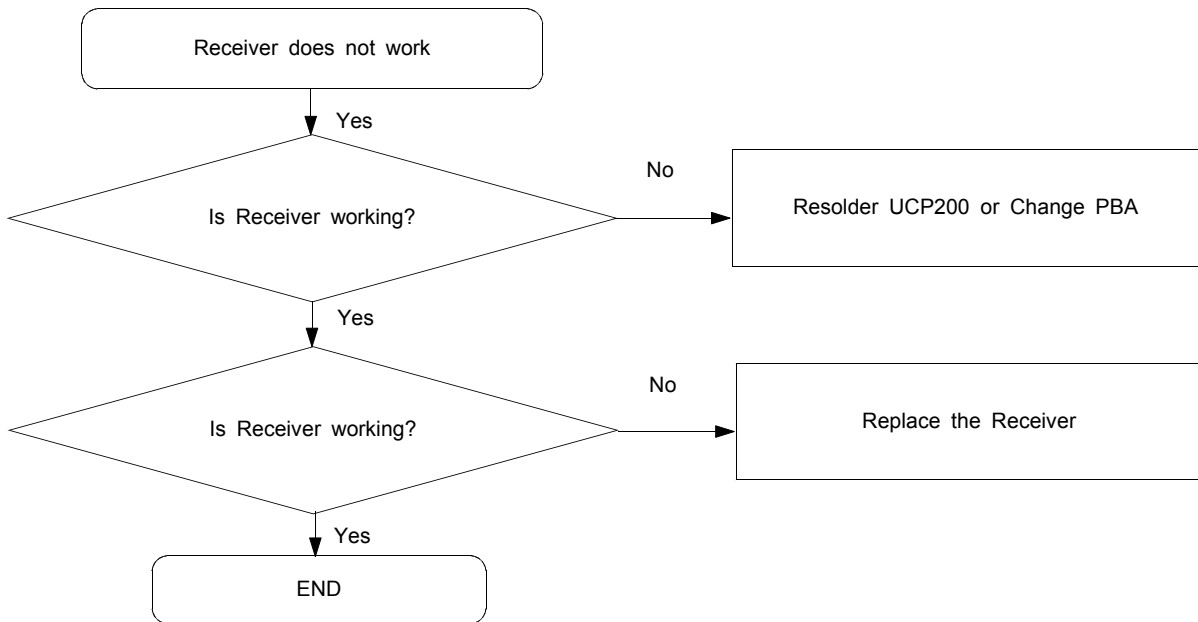




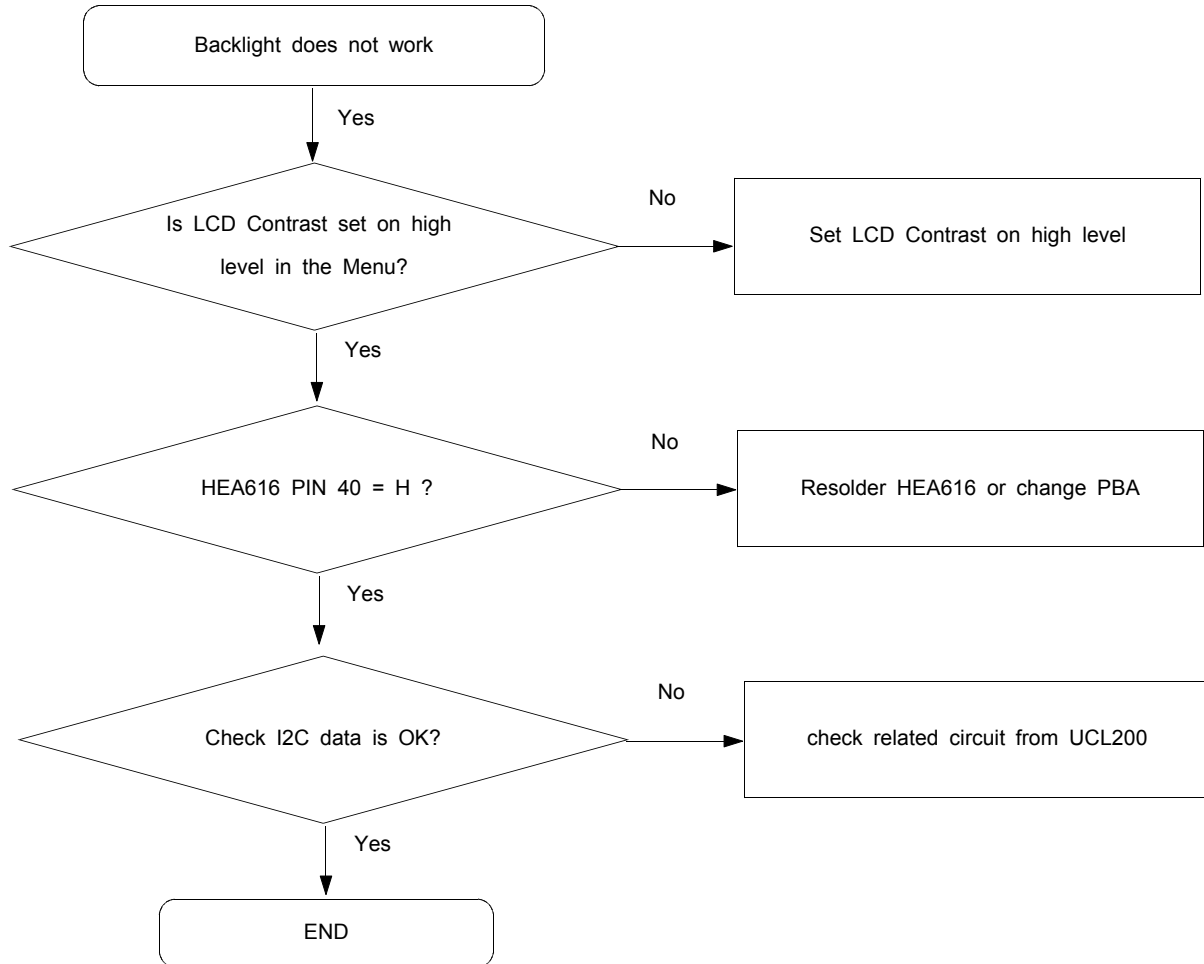
10-7. Key Data Input



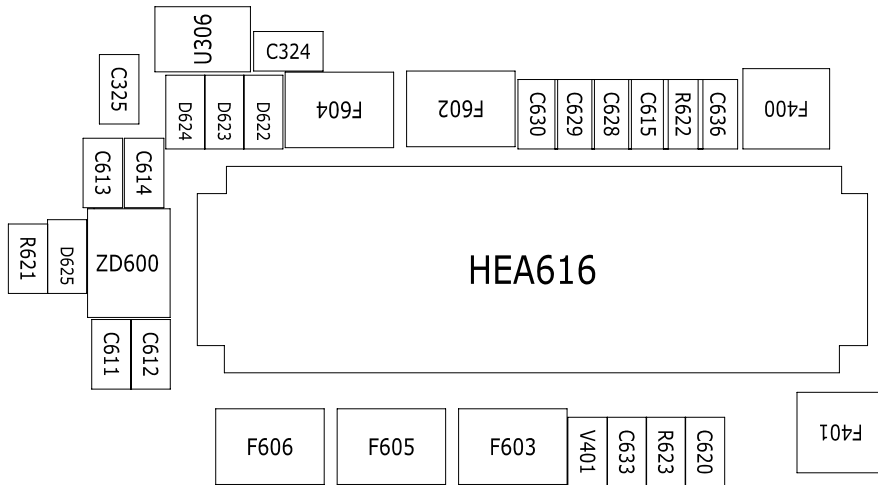
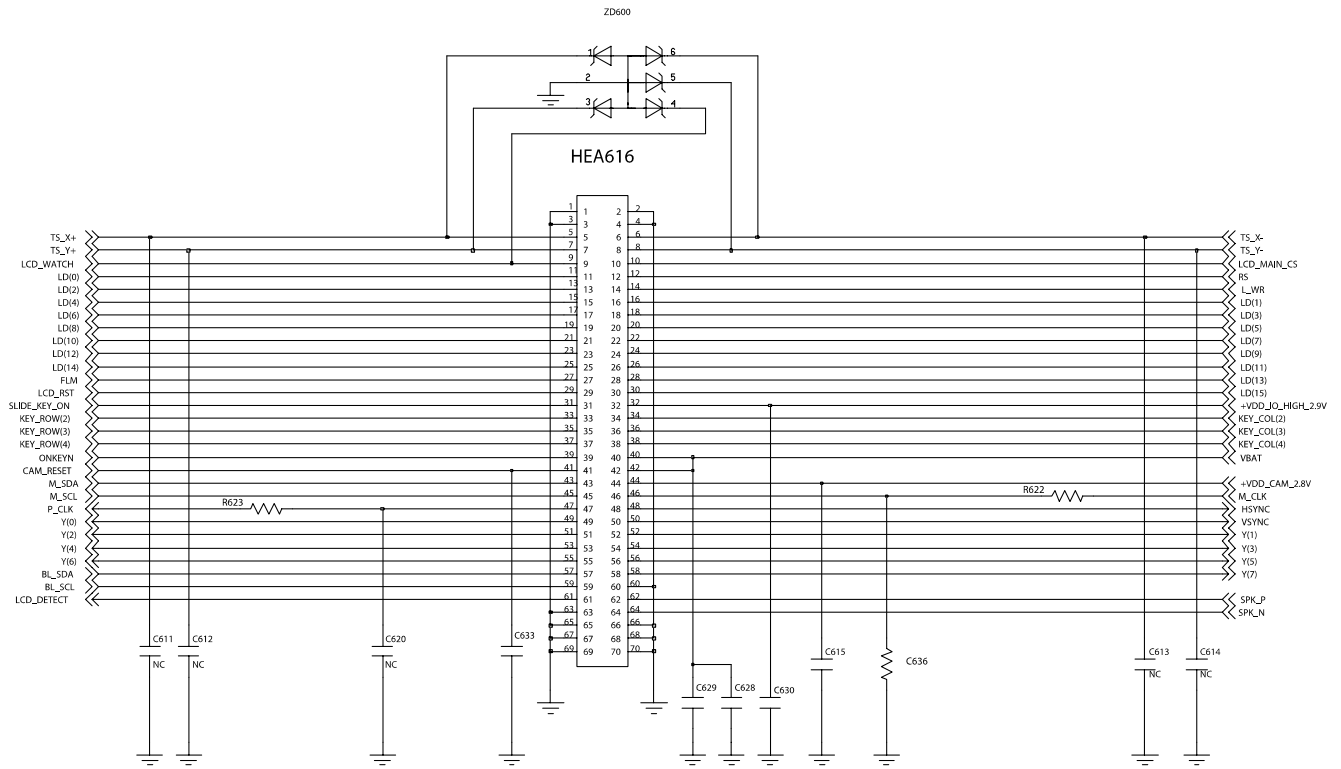
10-8. Receiver Part



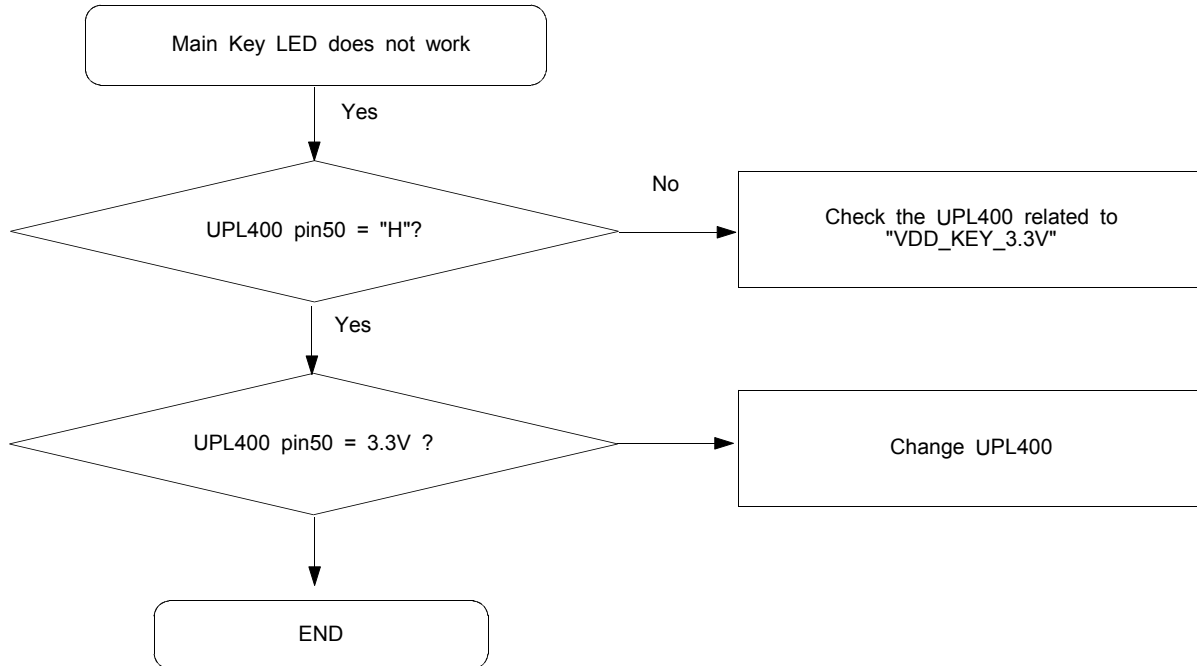
10-9. Back Light (for Color Main LCD)



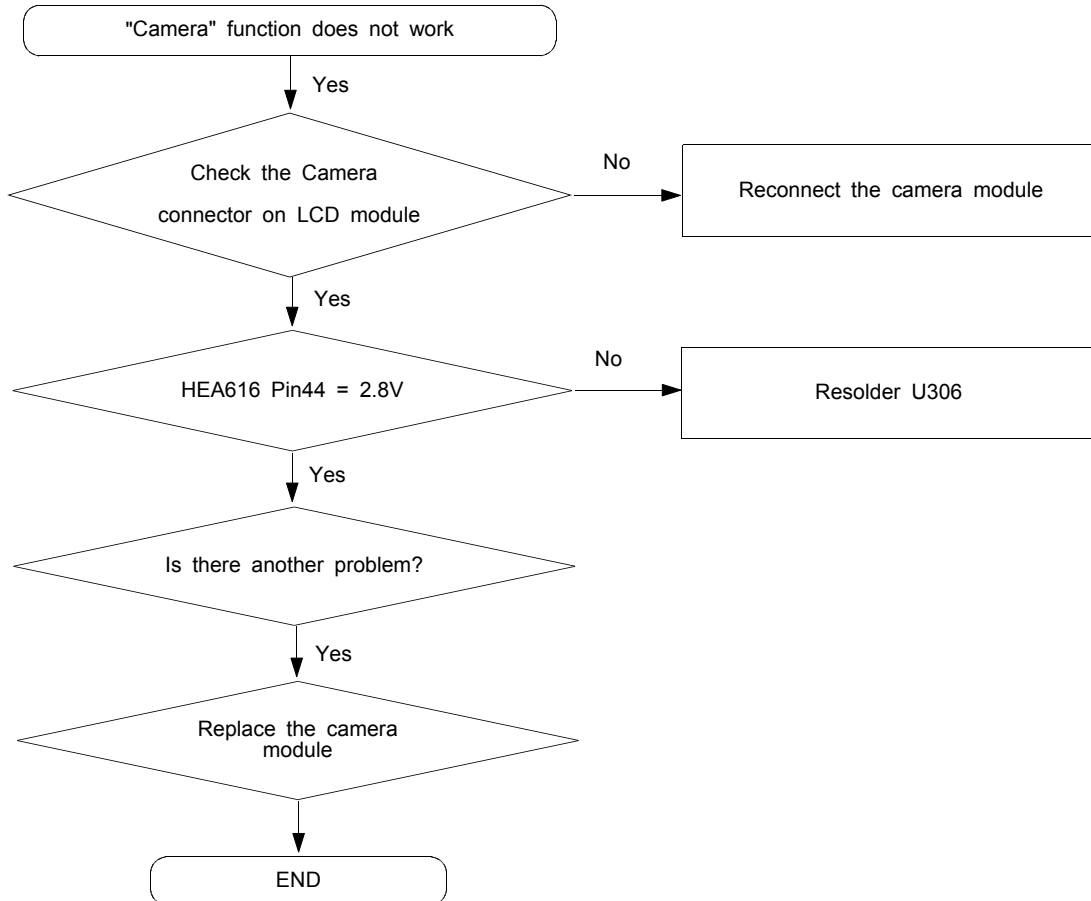
Flow Chart of Troubleshooting



10-10. Key Back Light

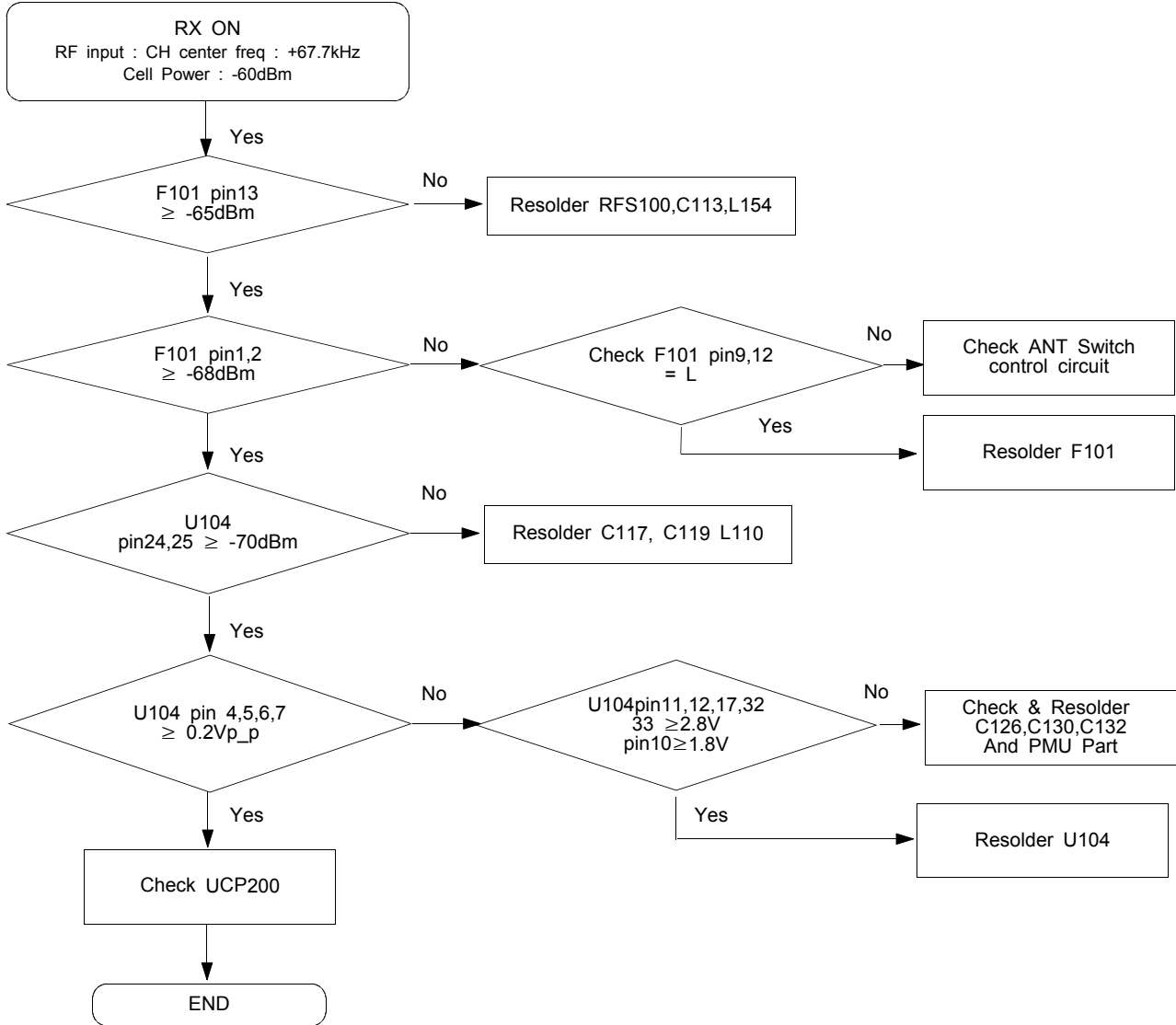


10-11. Camera part

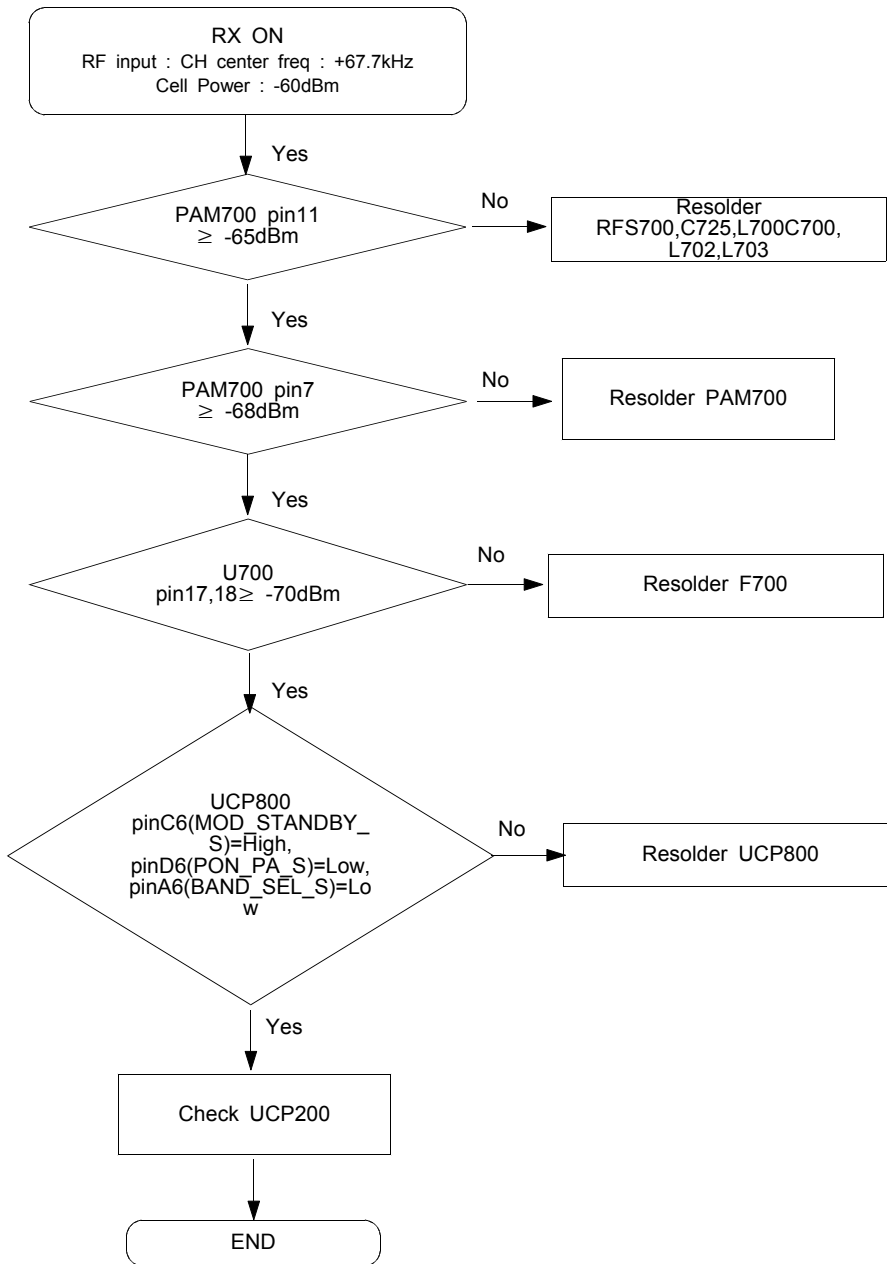


10-12. GSM Receiver

1) Master

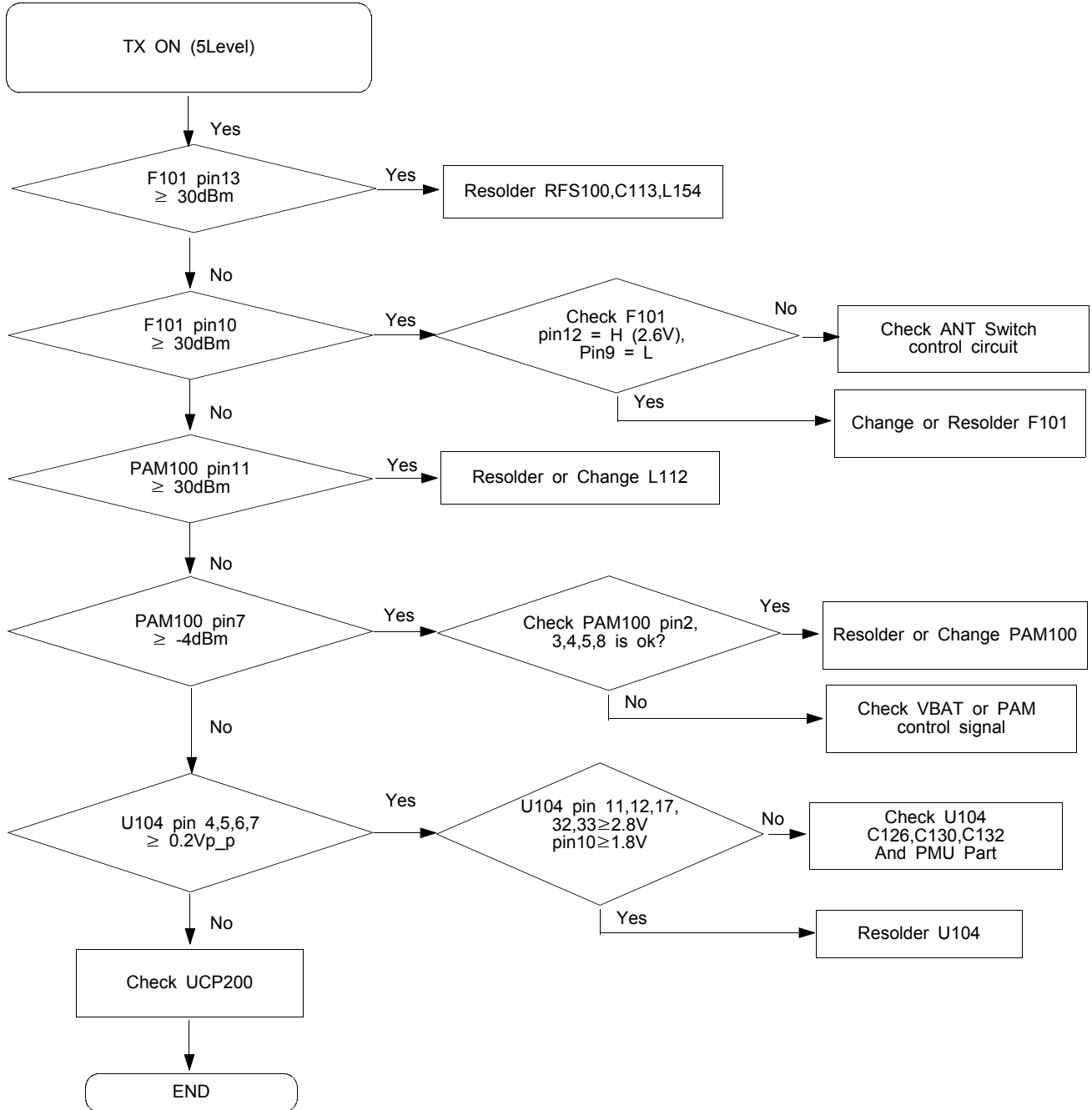


2)Slave

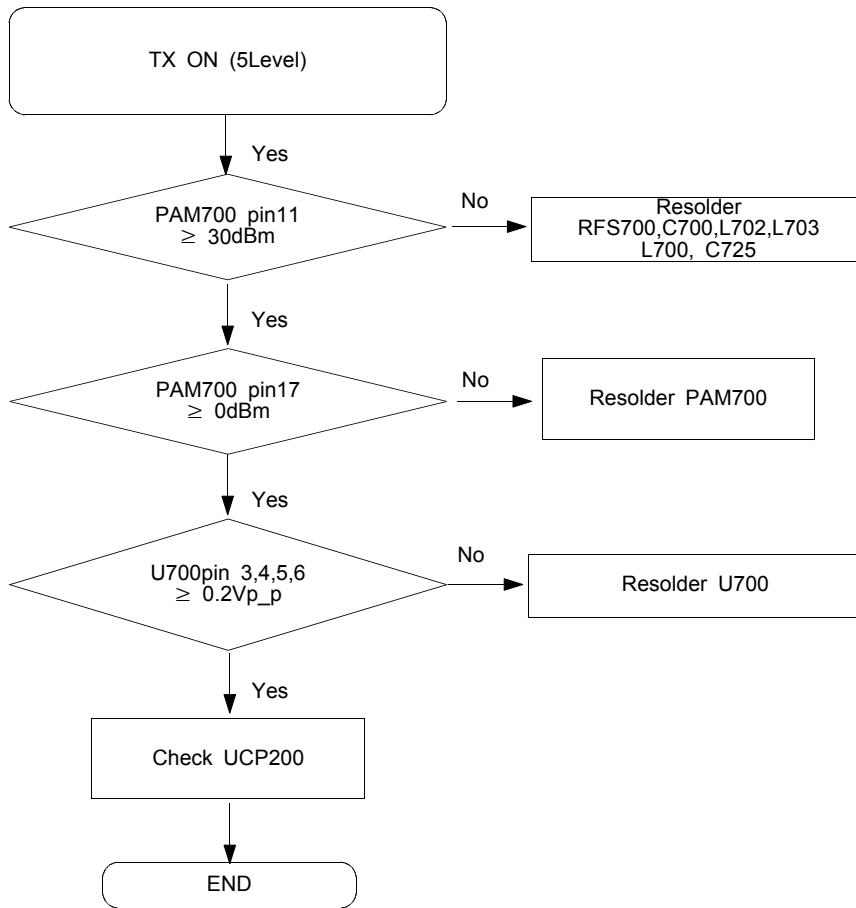


10-13. GSM Transmitter

1)Master

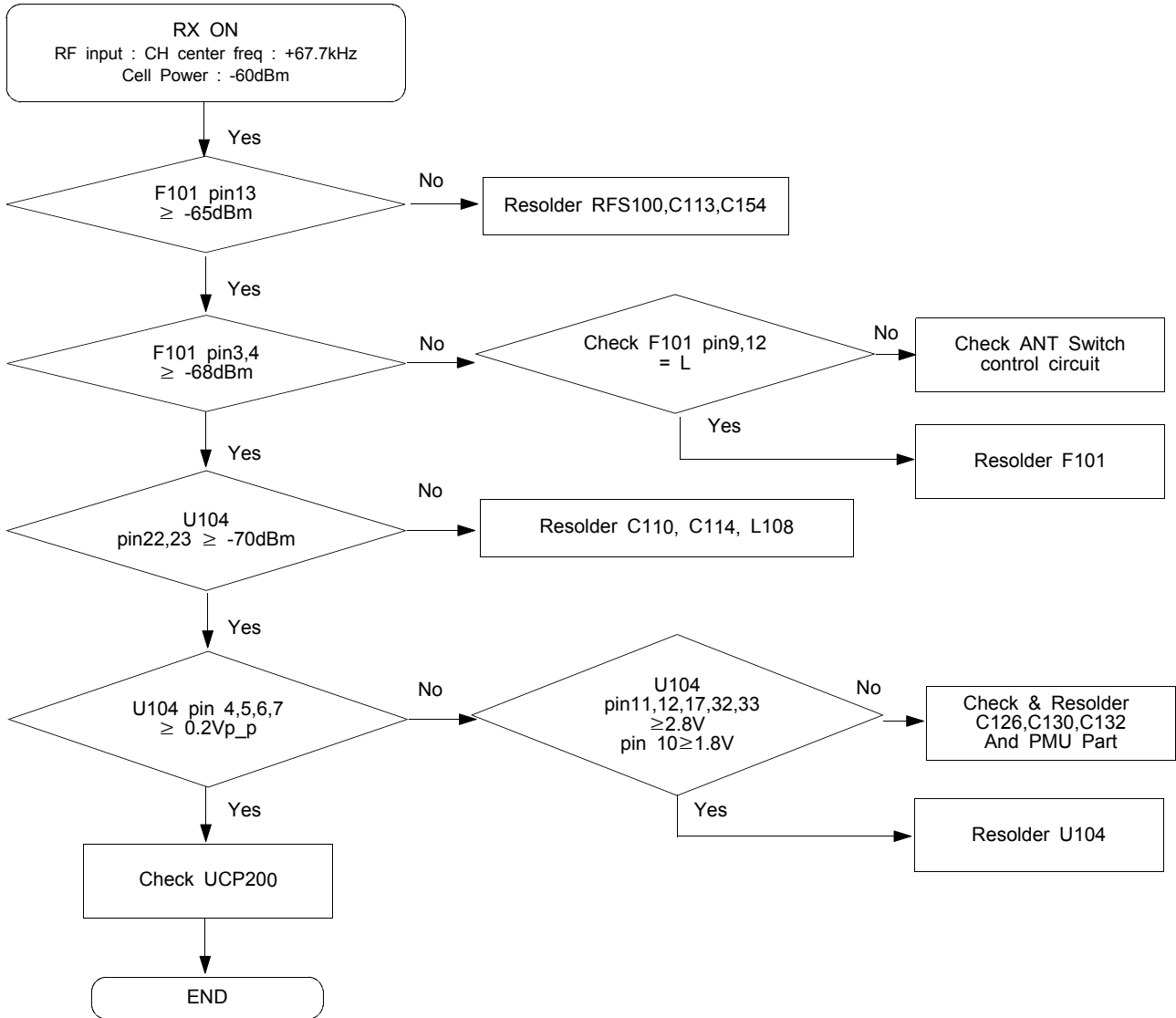


2)Slave

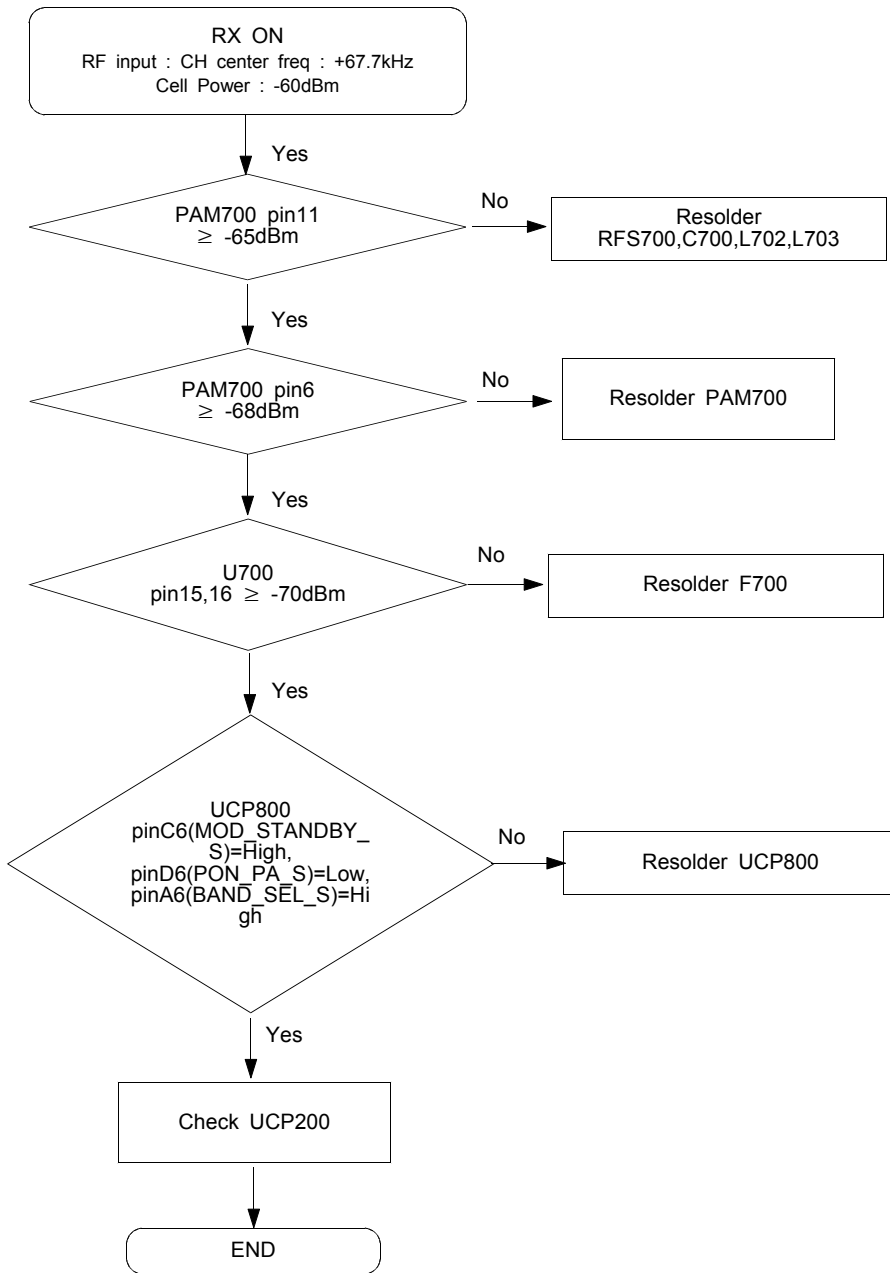


10-14. DCS Receiver

1) Master

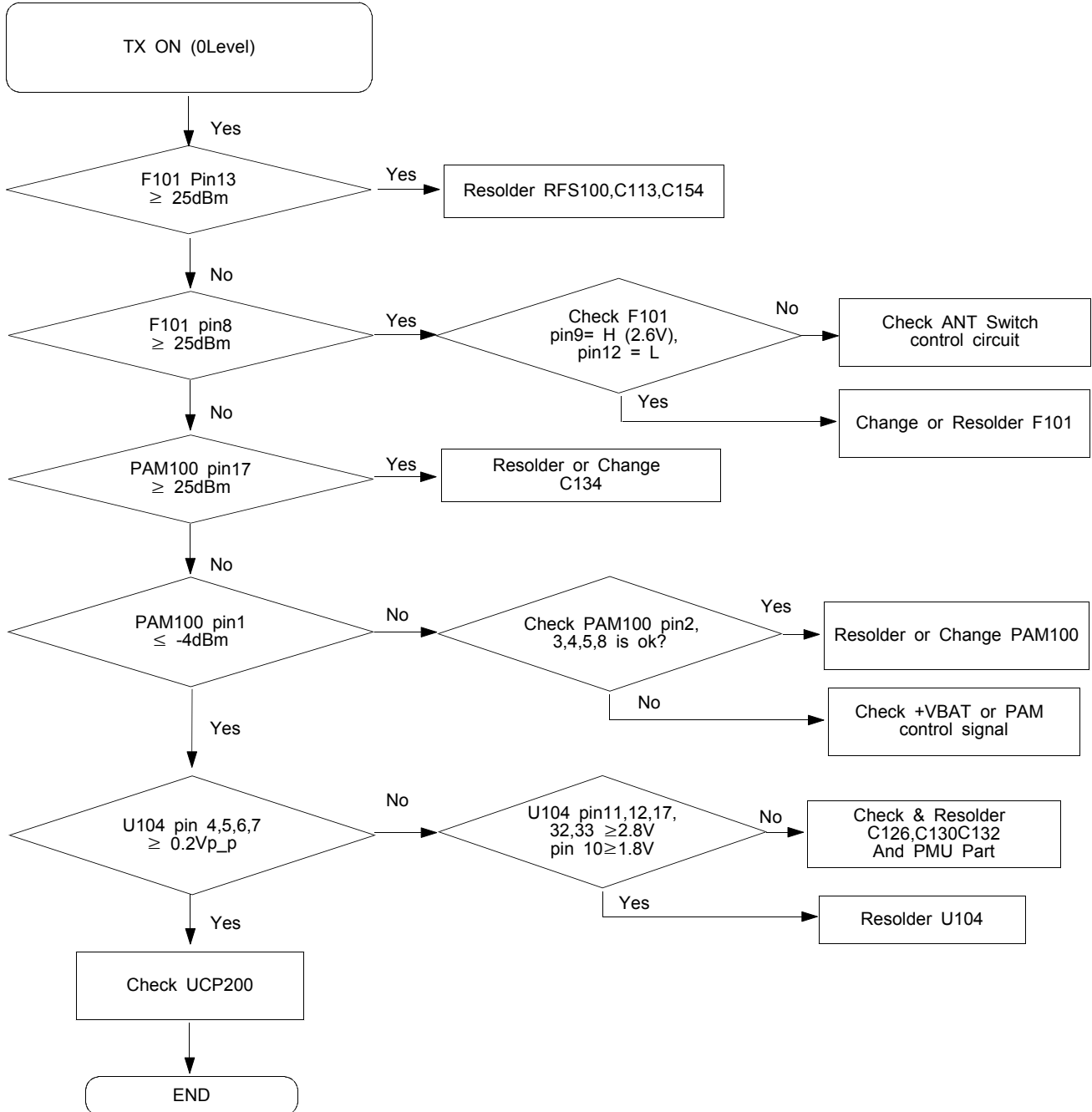


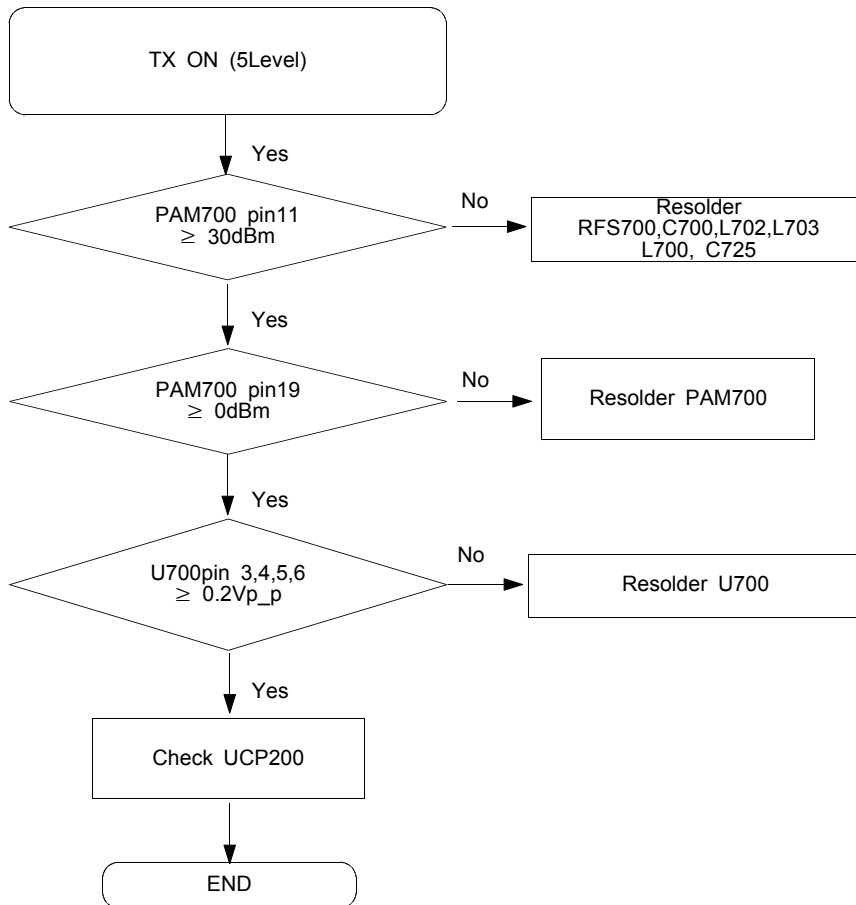
2)Slave



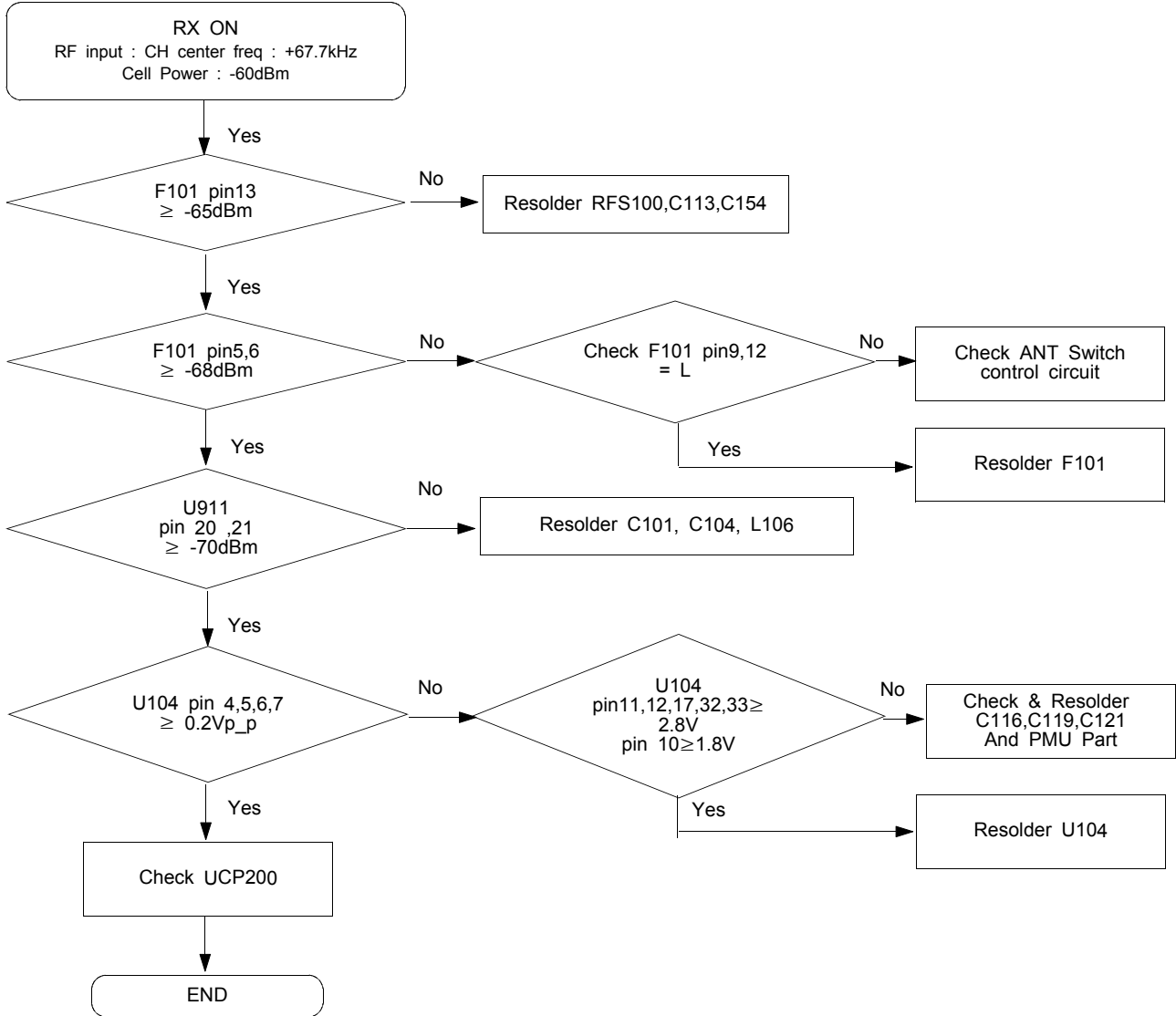
10-15. DCS Transmitter

1) Master

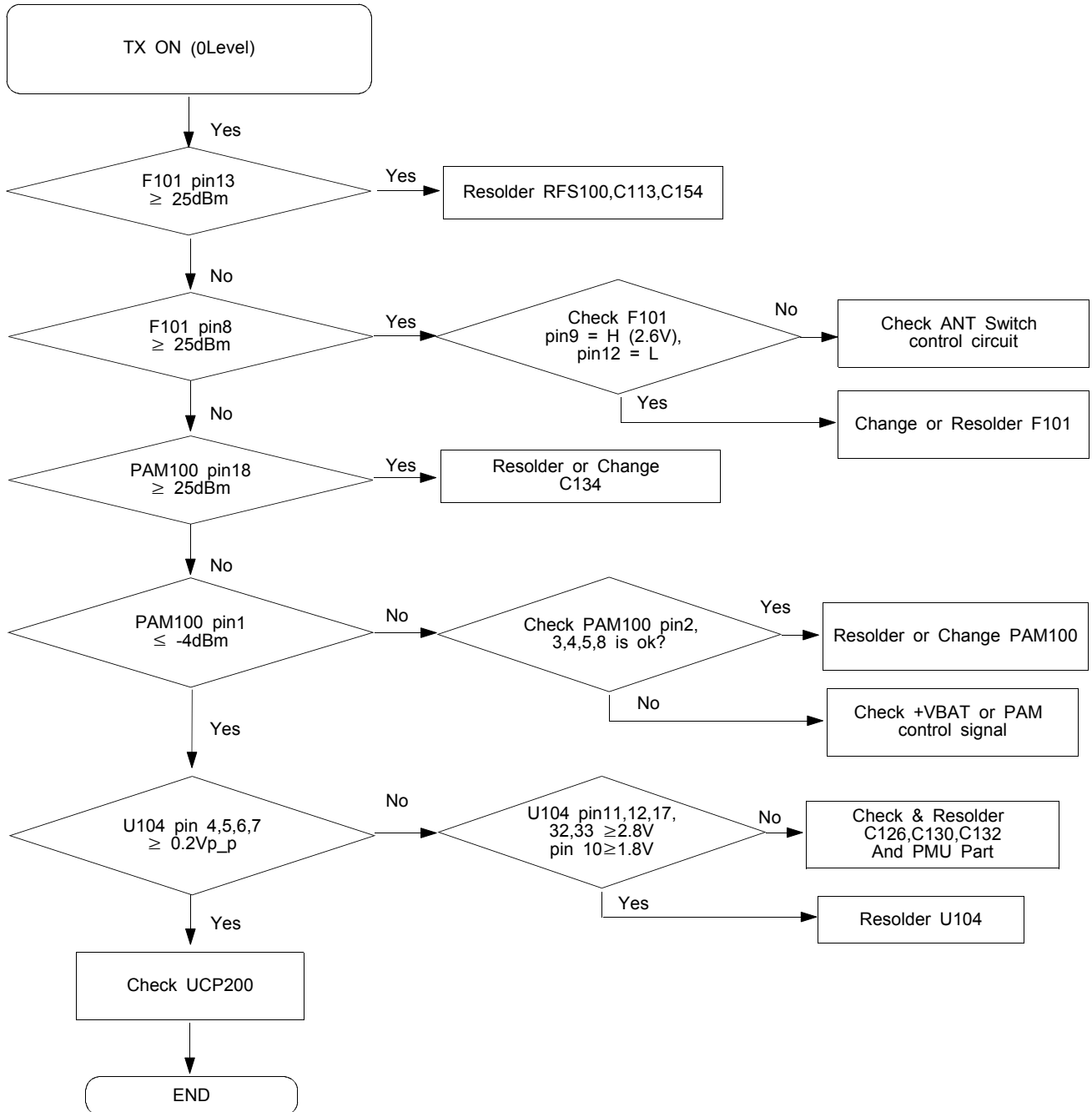


2)Slave

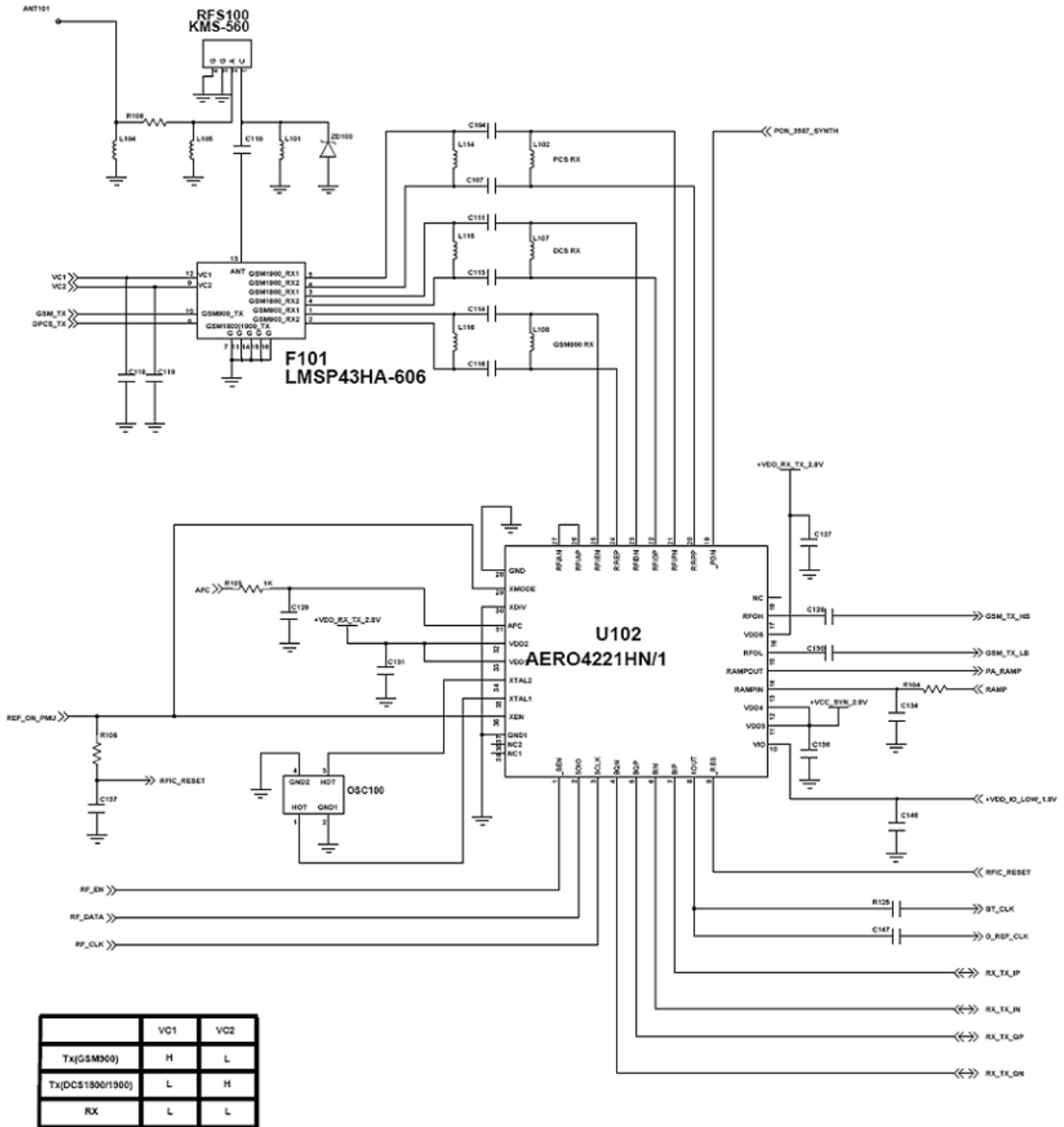
10-16. PCS Receiver

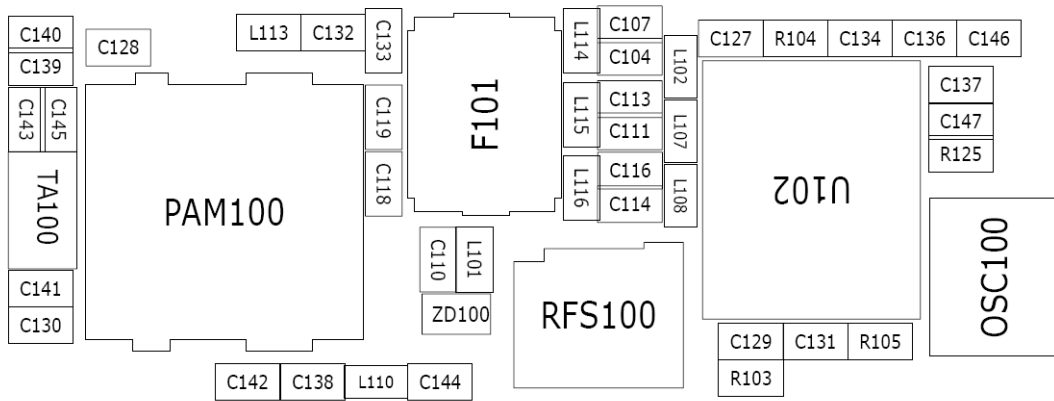
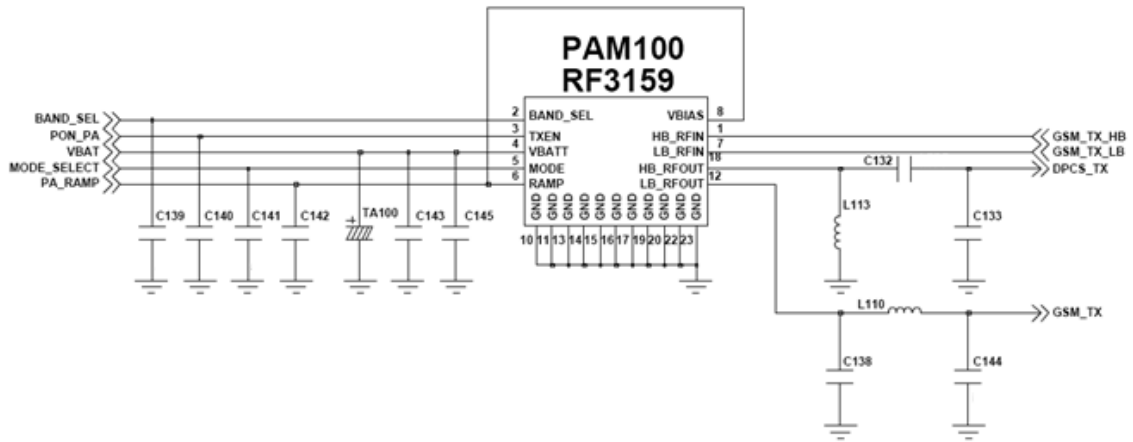


10-17. PCS Transmitter

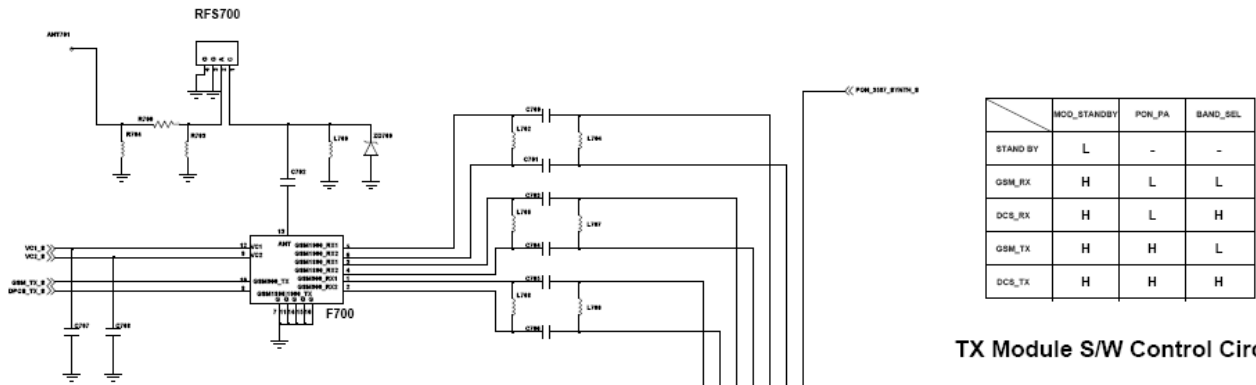


[Master]

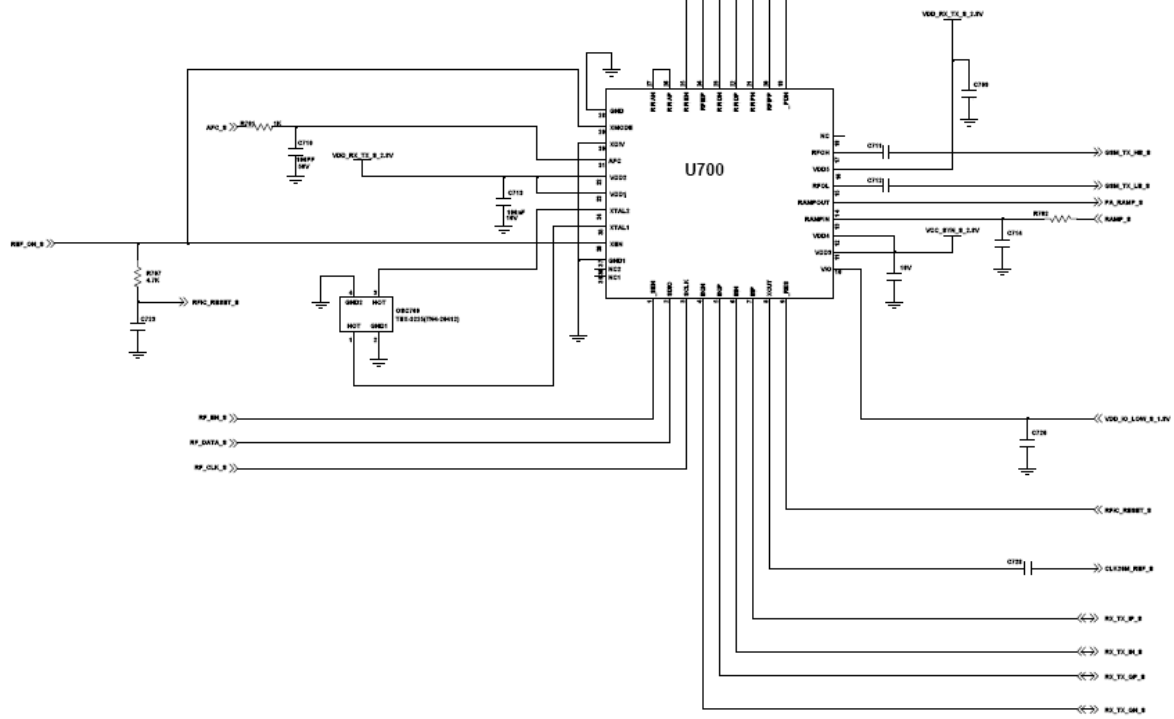


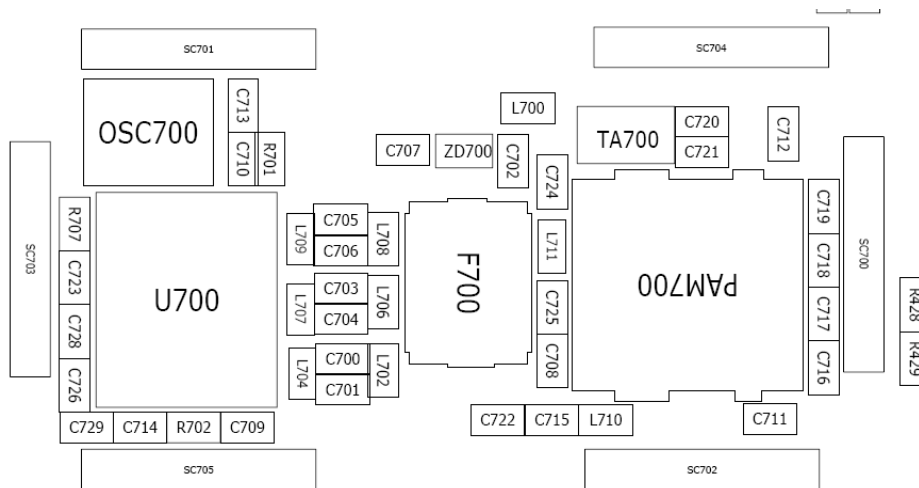
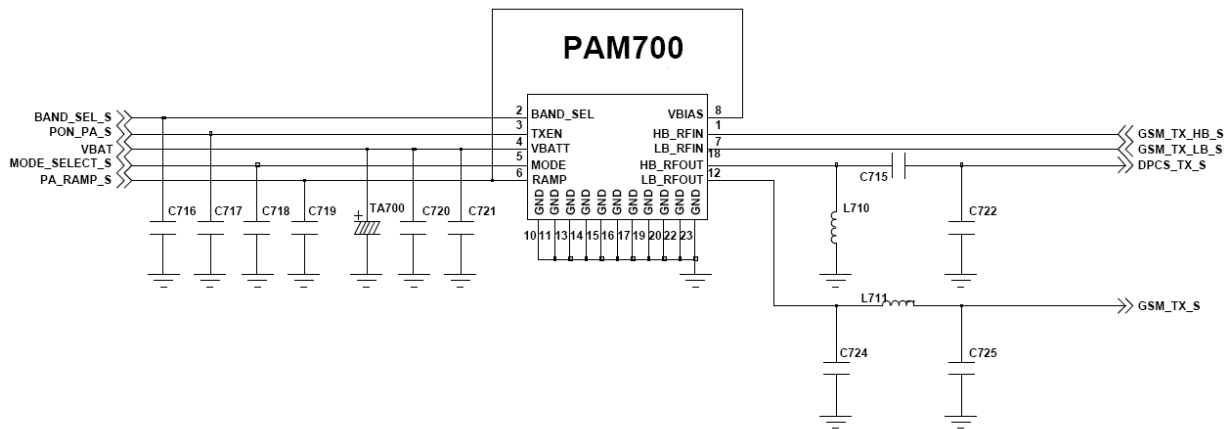


[Slave]

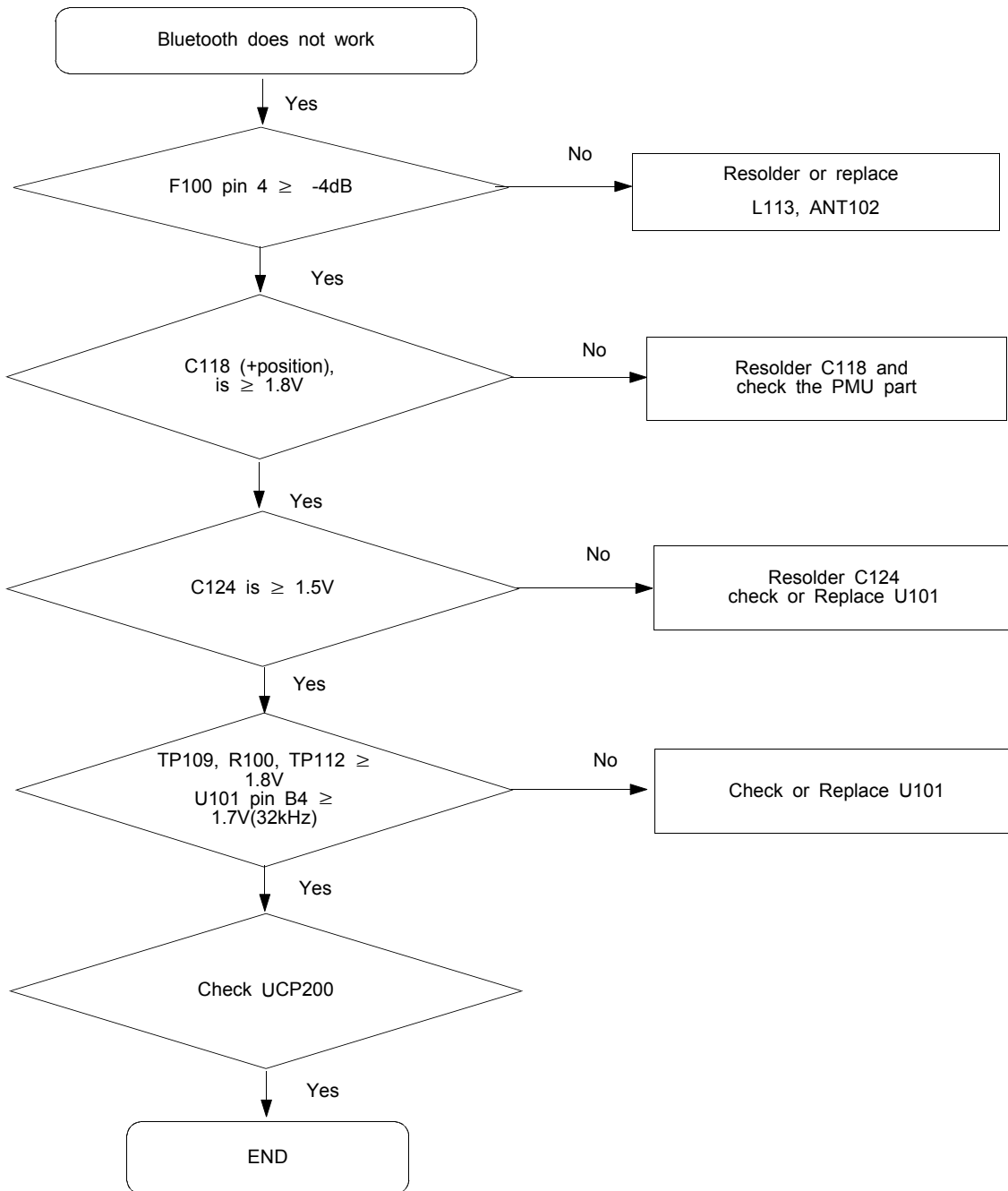


TX Module S/W Control Circuit





10-18. Bluetooth part



10-19. FM Radio part