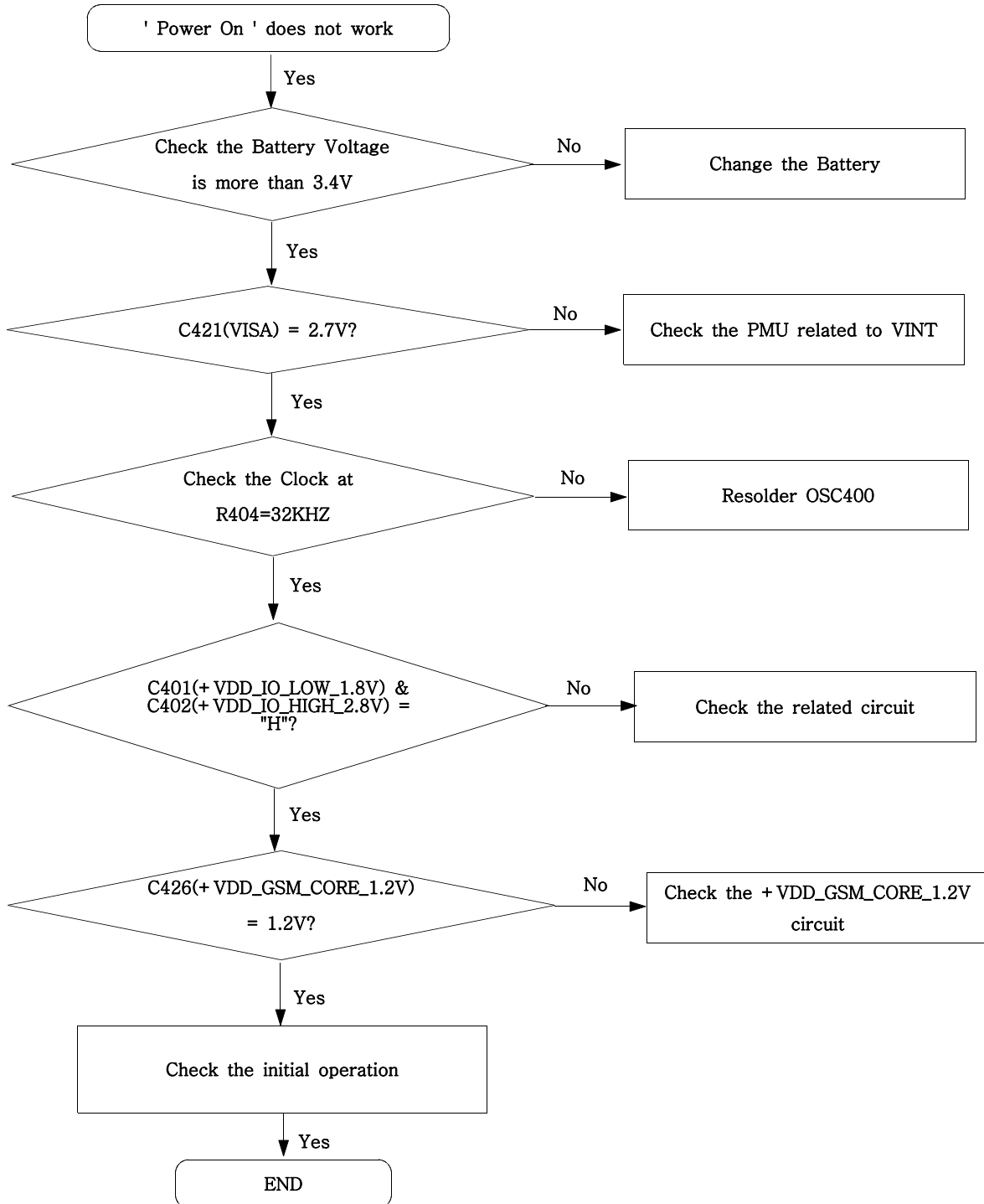
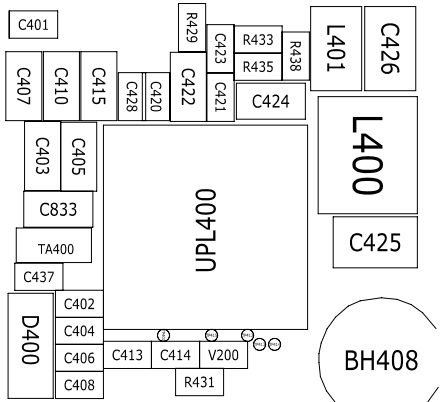
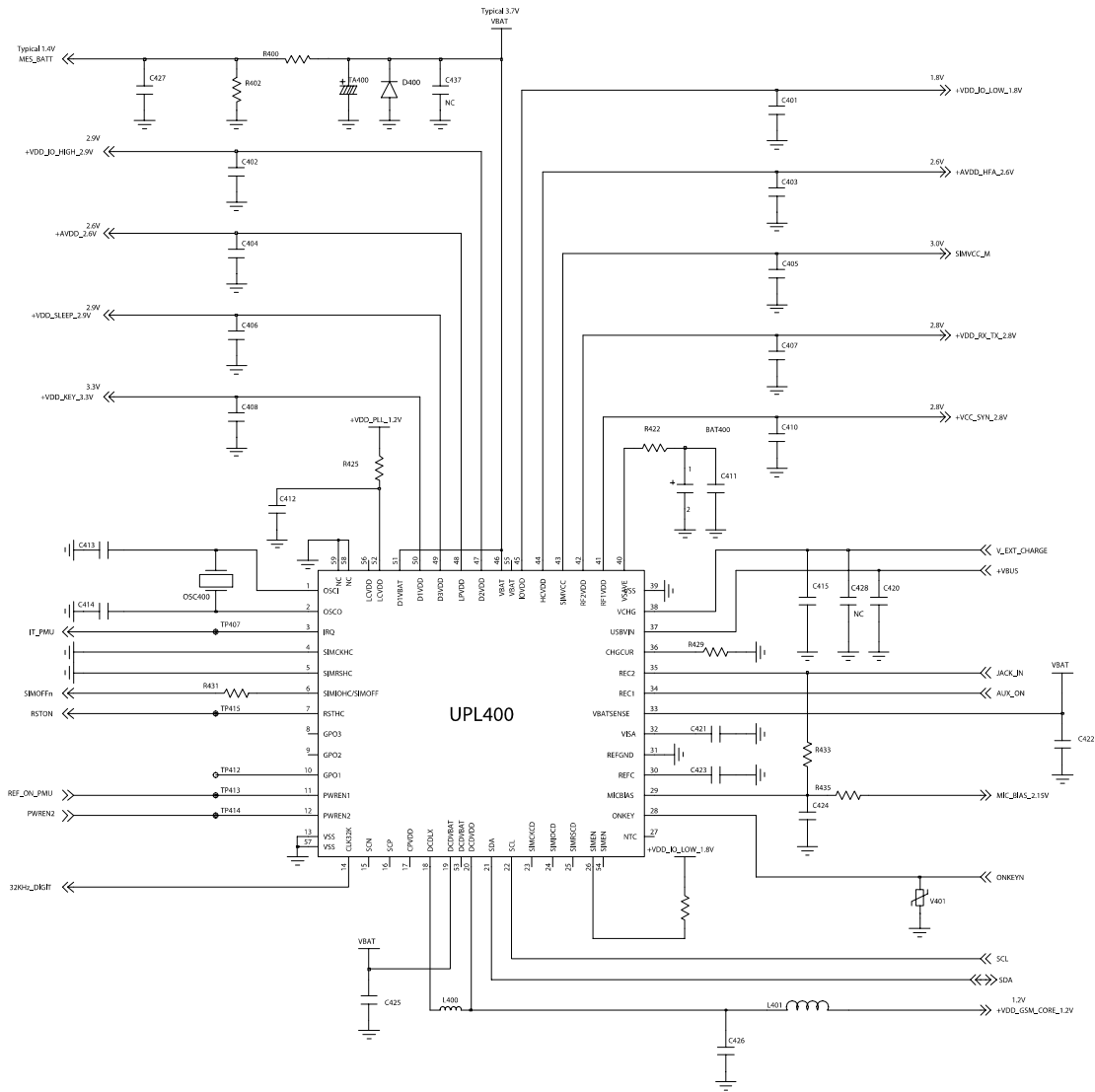


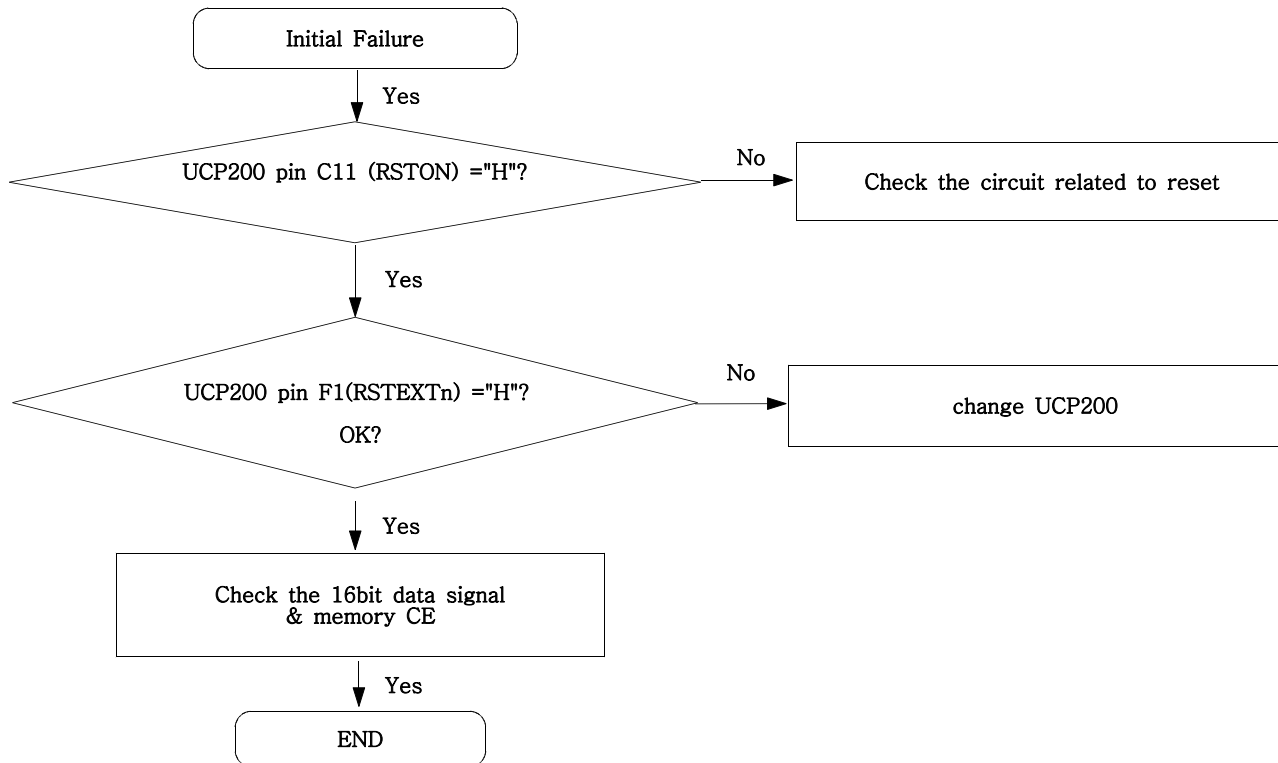
9. Flow Chart of Troubleshooting

9-1. Power On

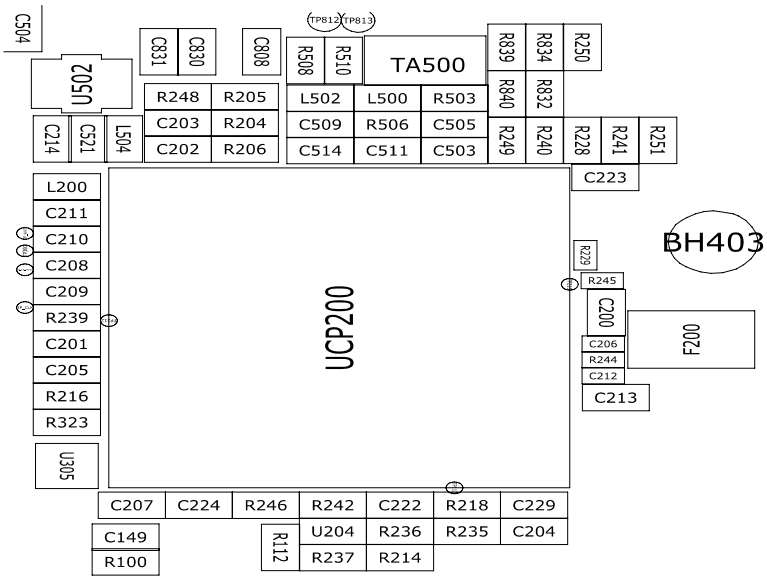
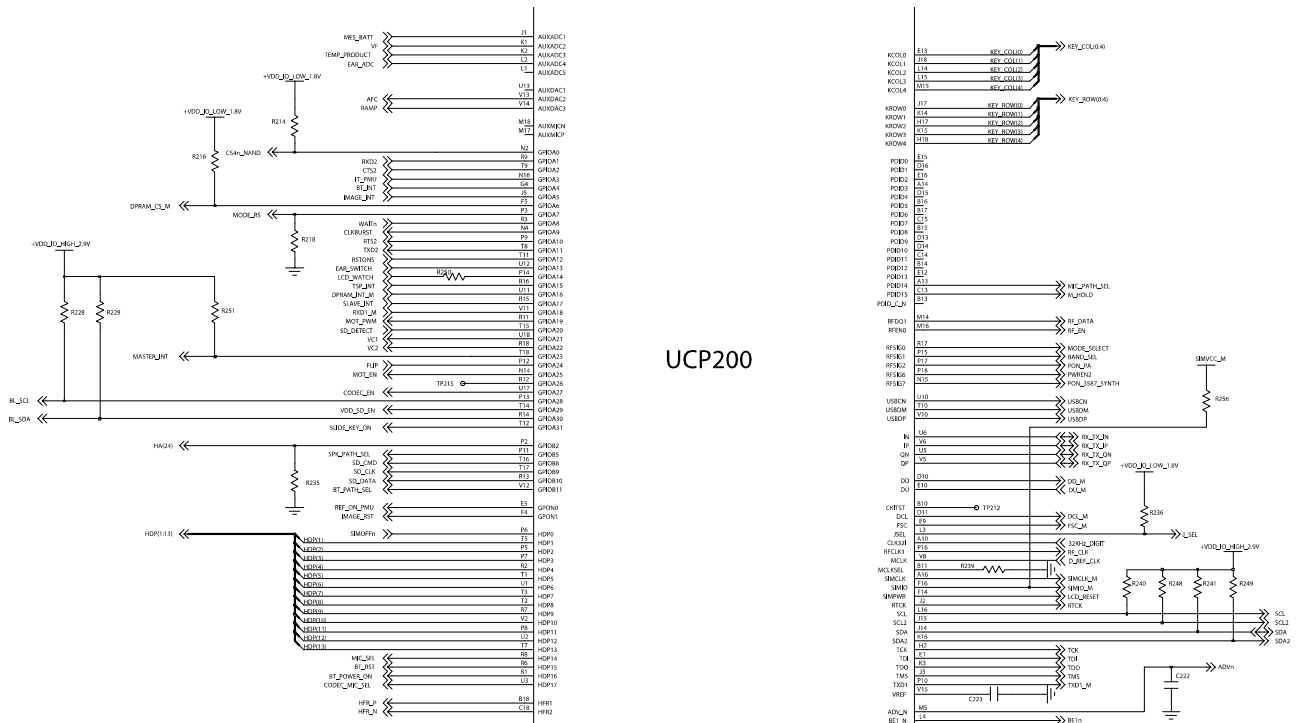




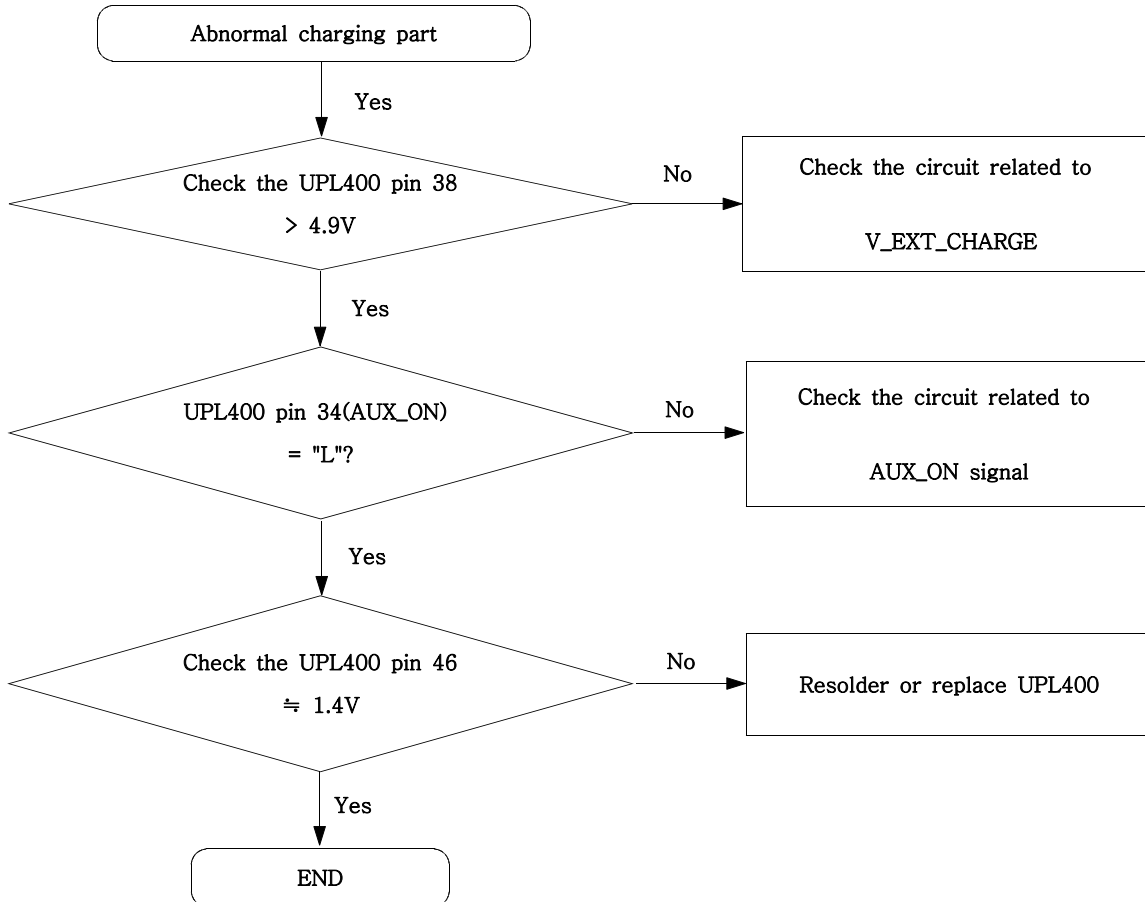
9-2. Initial

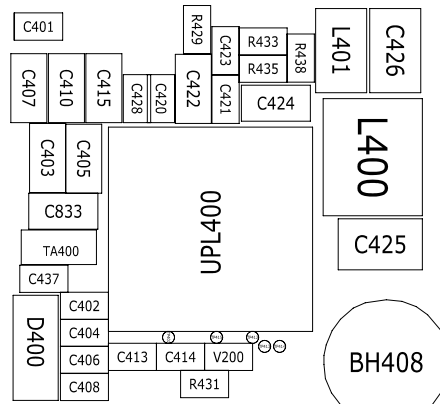
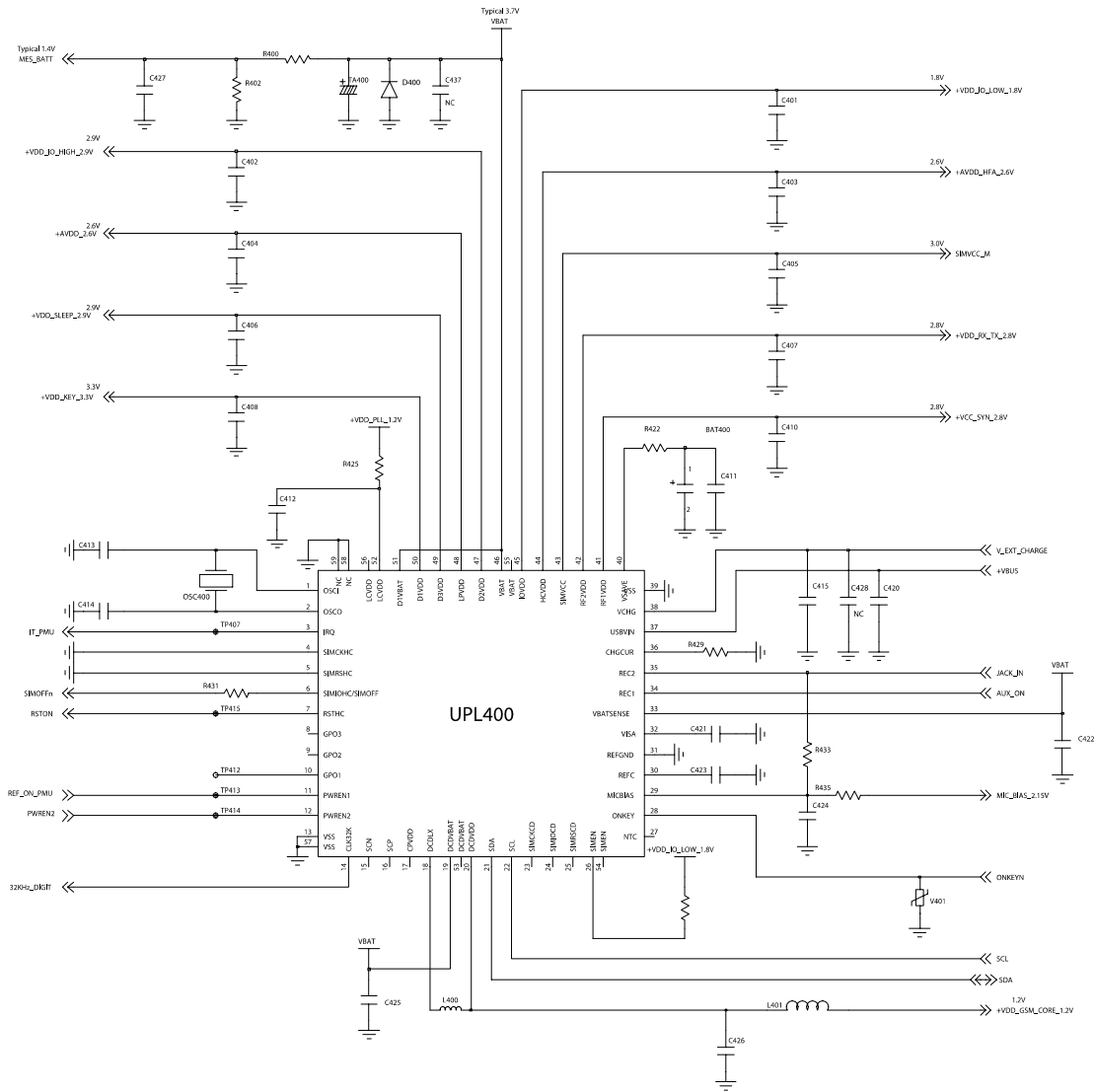


Flow Chart of Troubleshooting



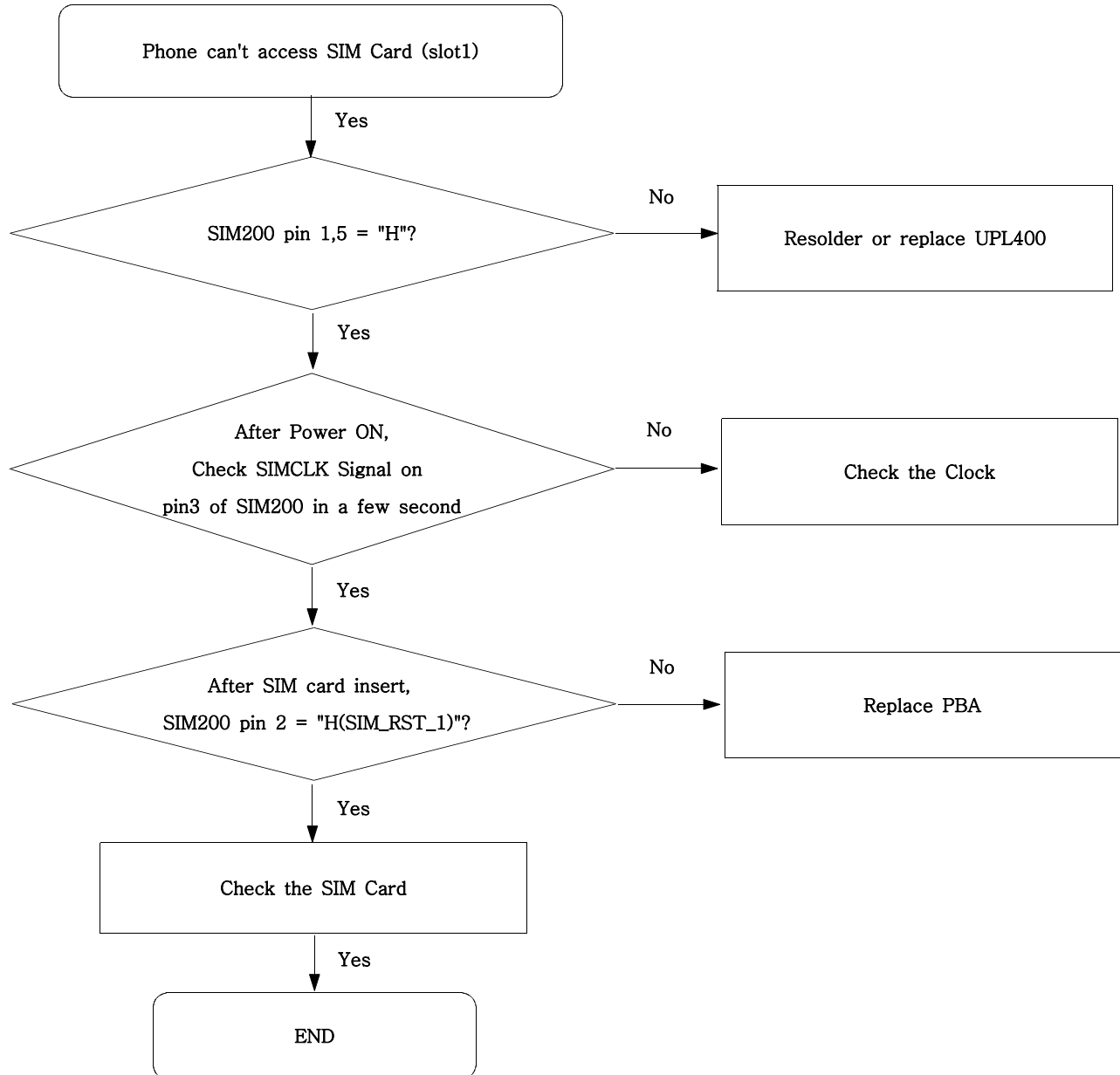
9-3. Charging Part

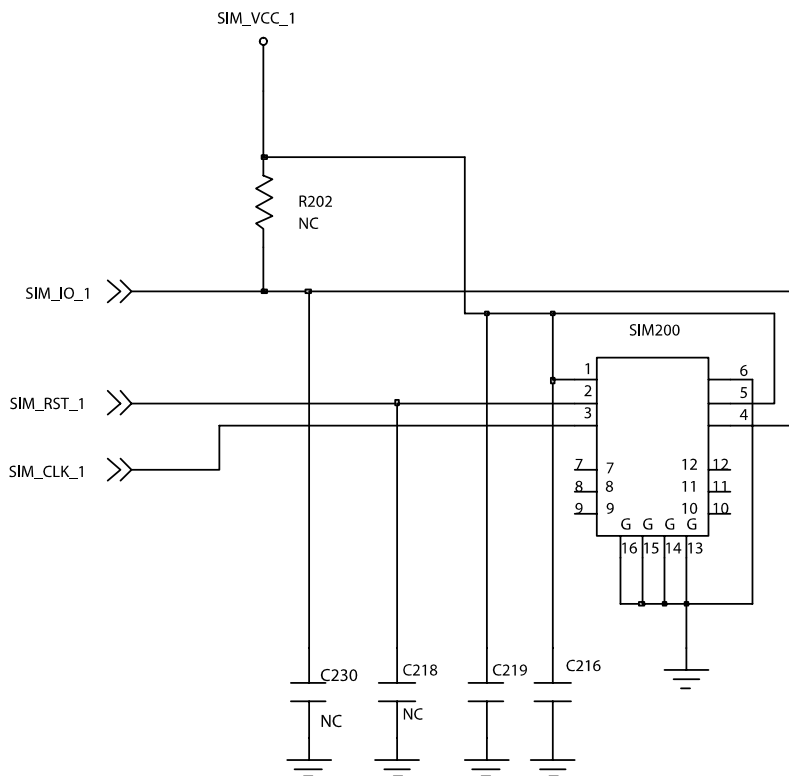




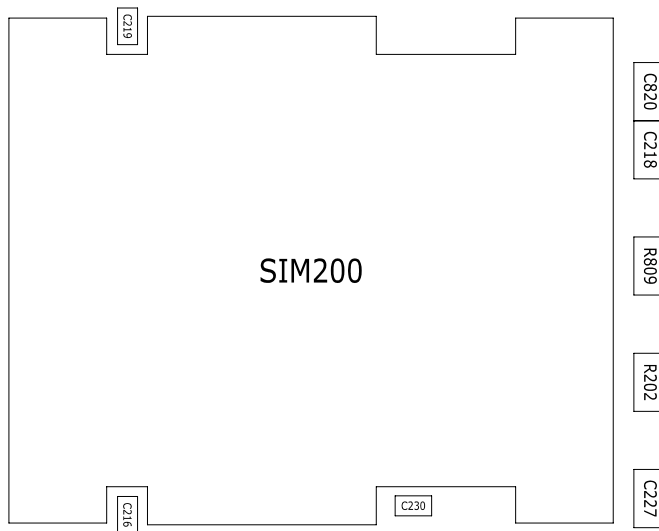
9-4. Sim Part

1) Master

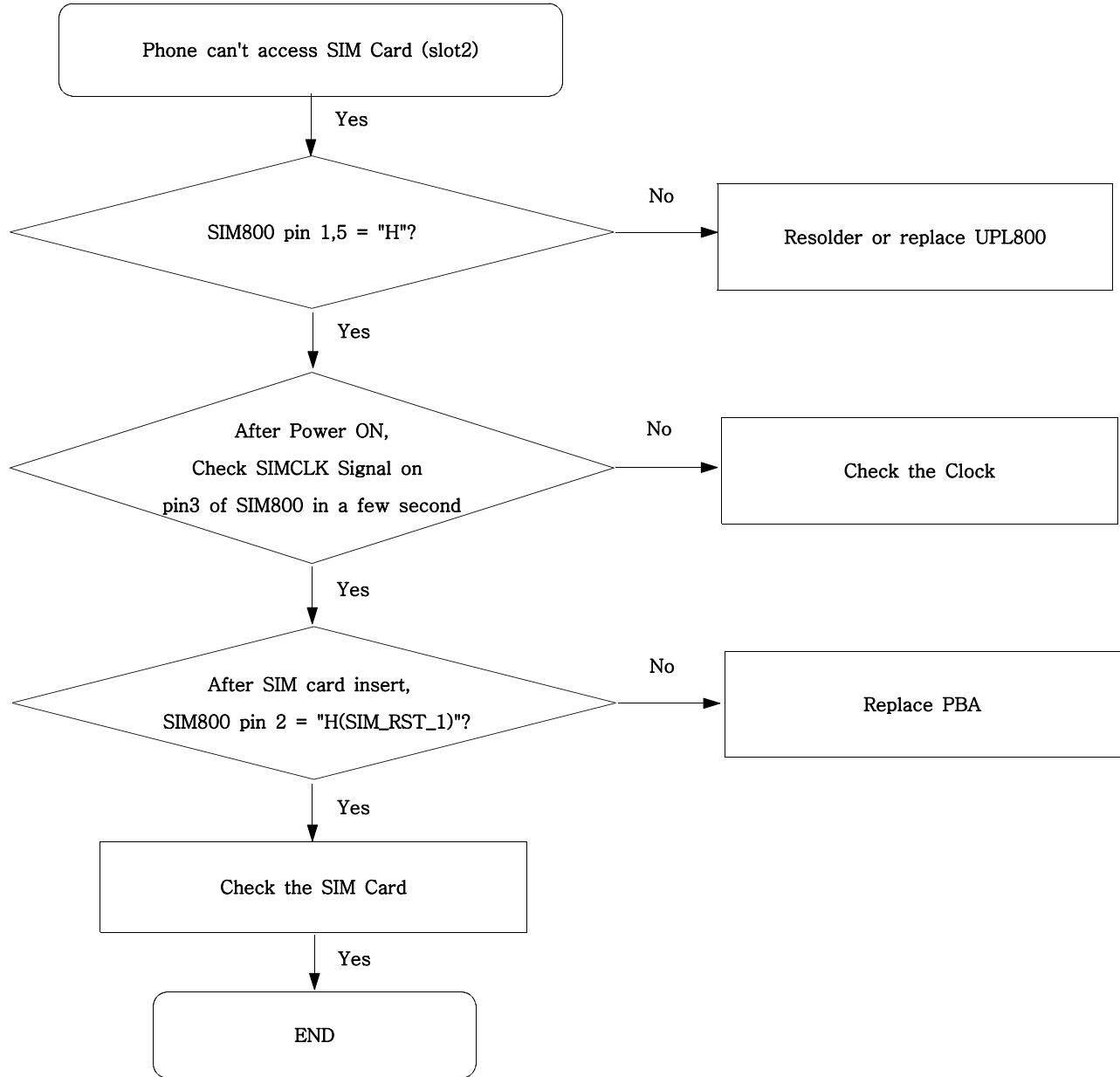


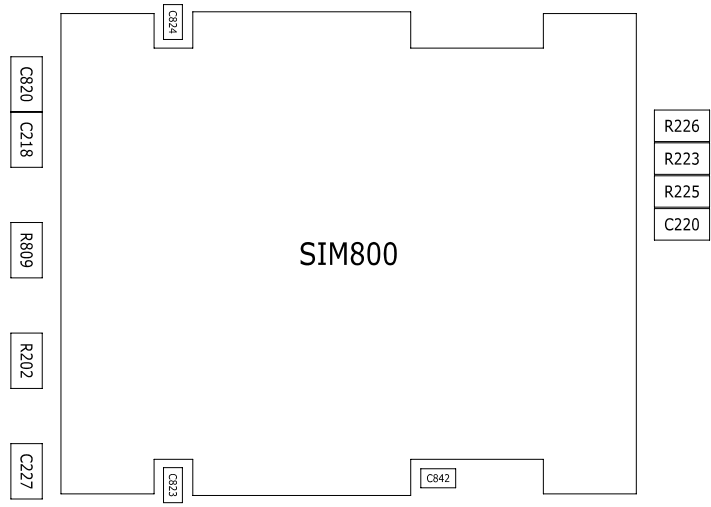
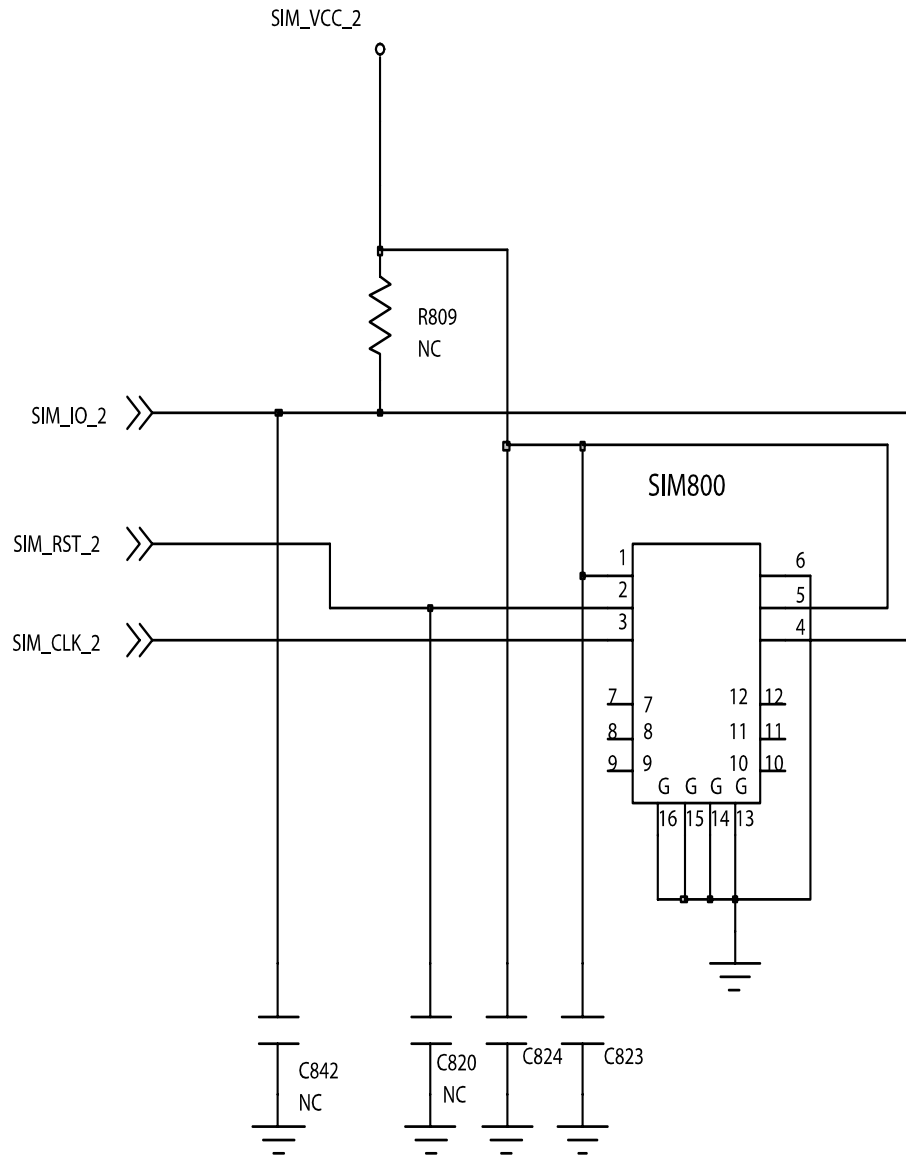


SIM1 [MASTER]

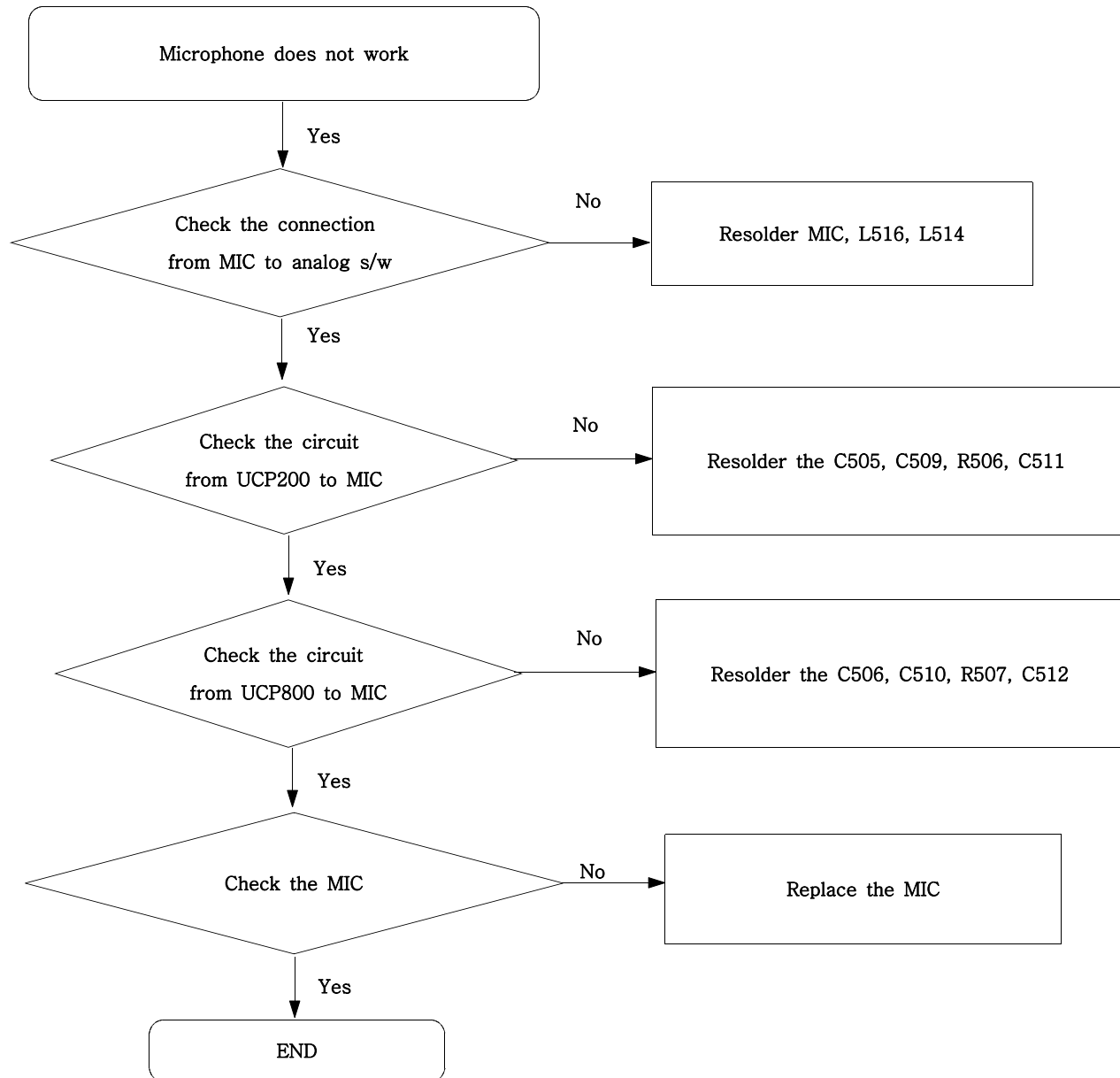


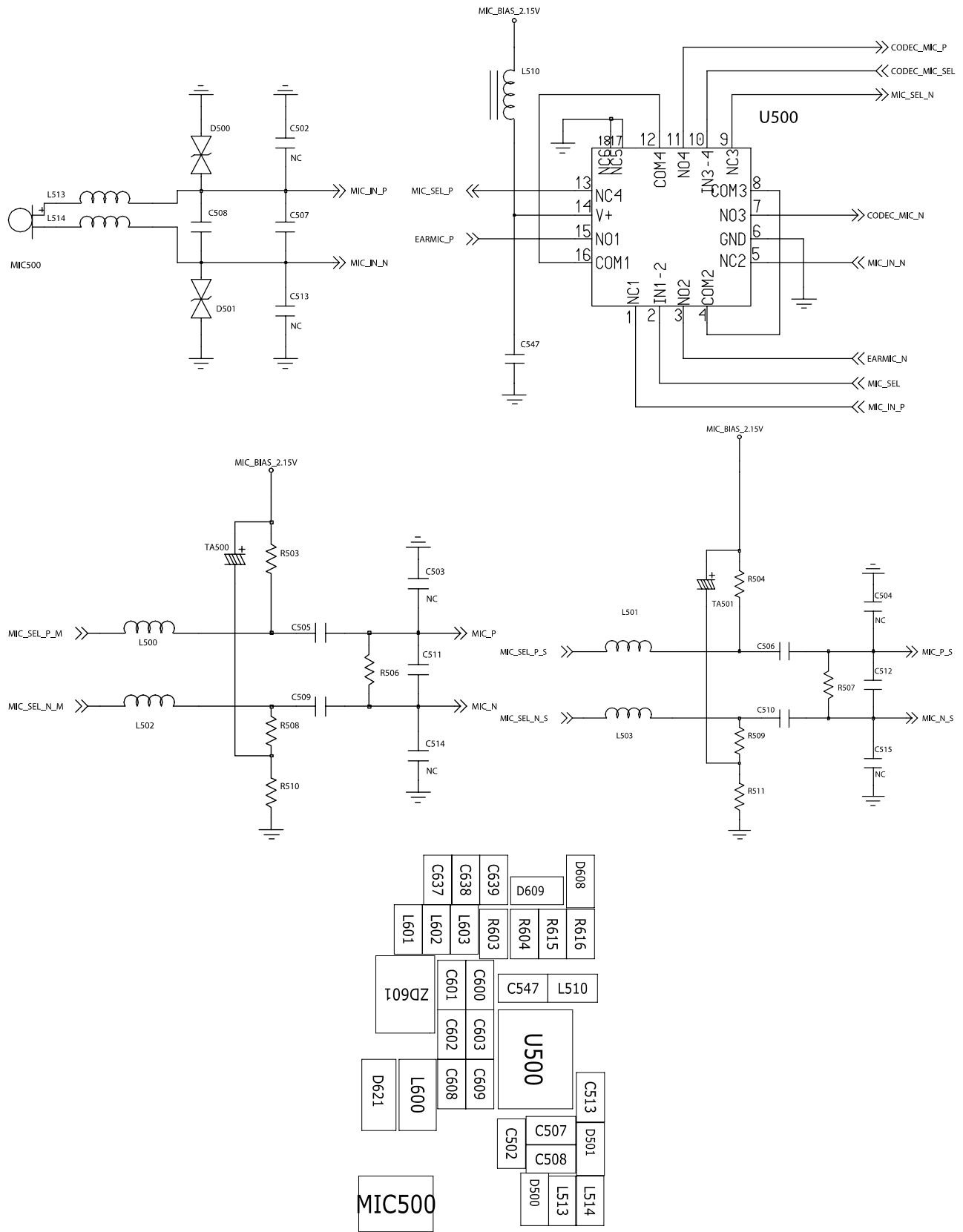
2)Slave



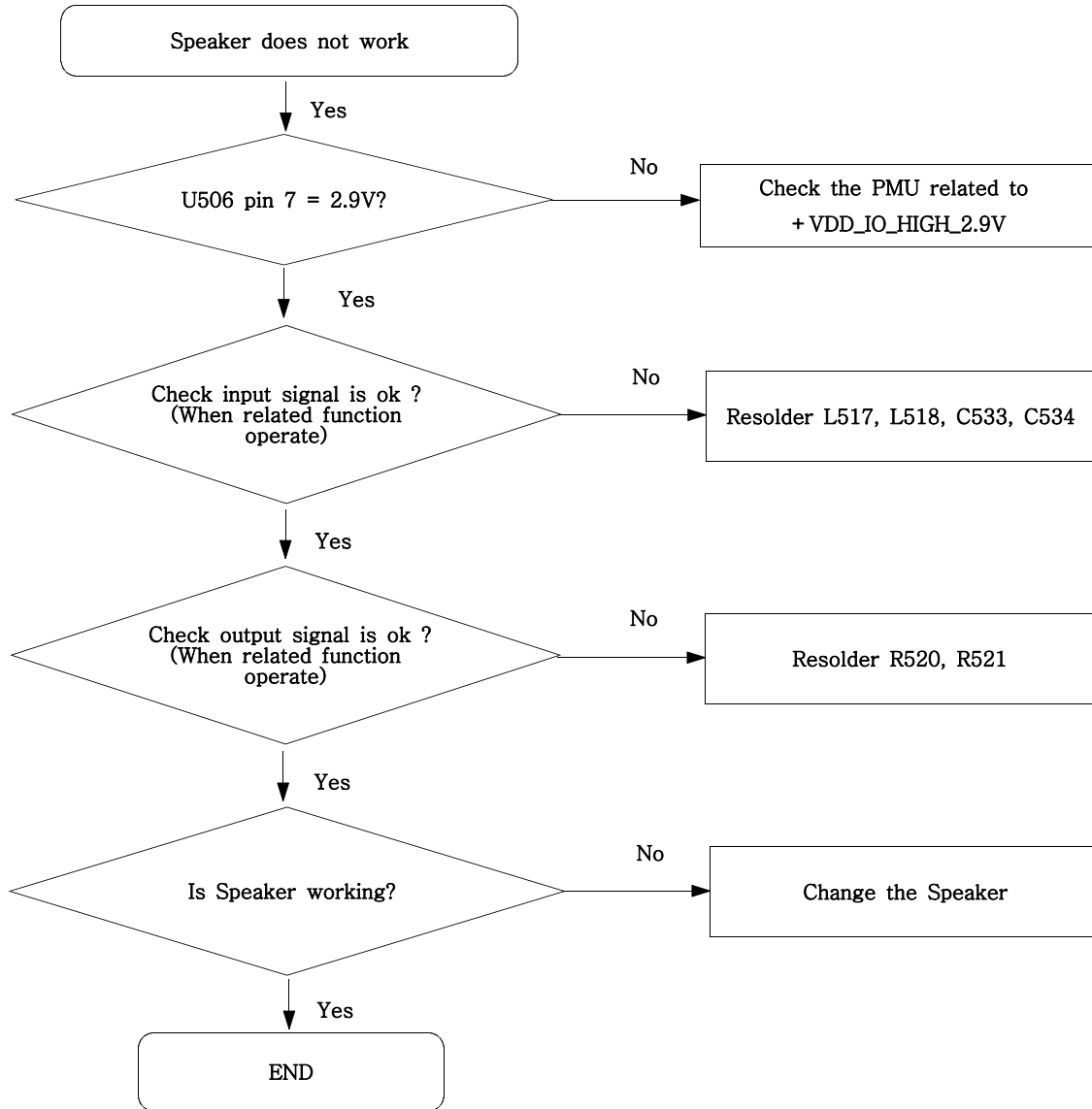


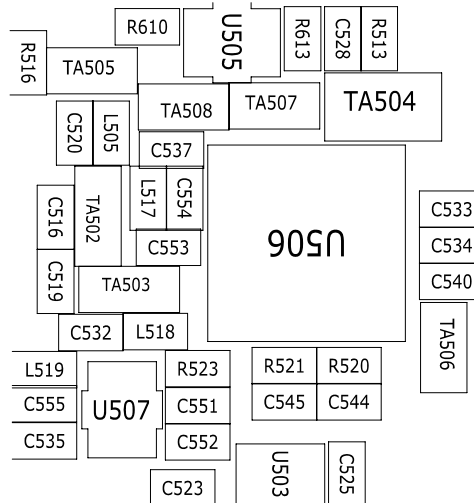
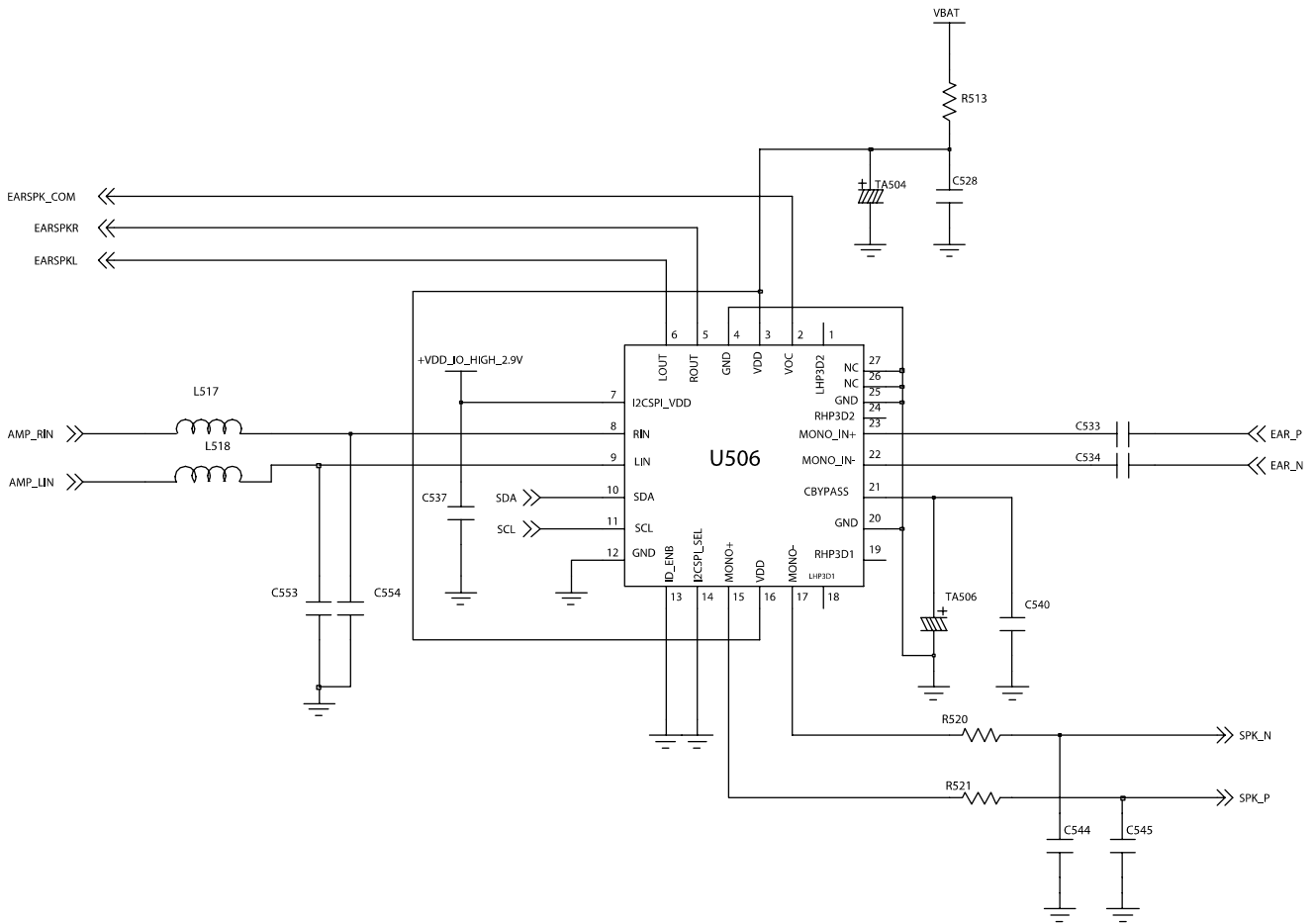
9-5. Microphone Part



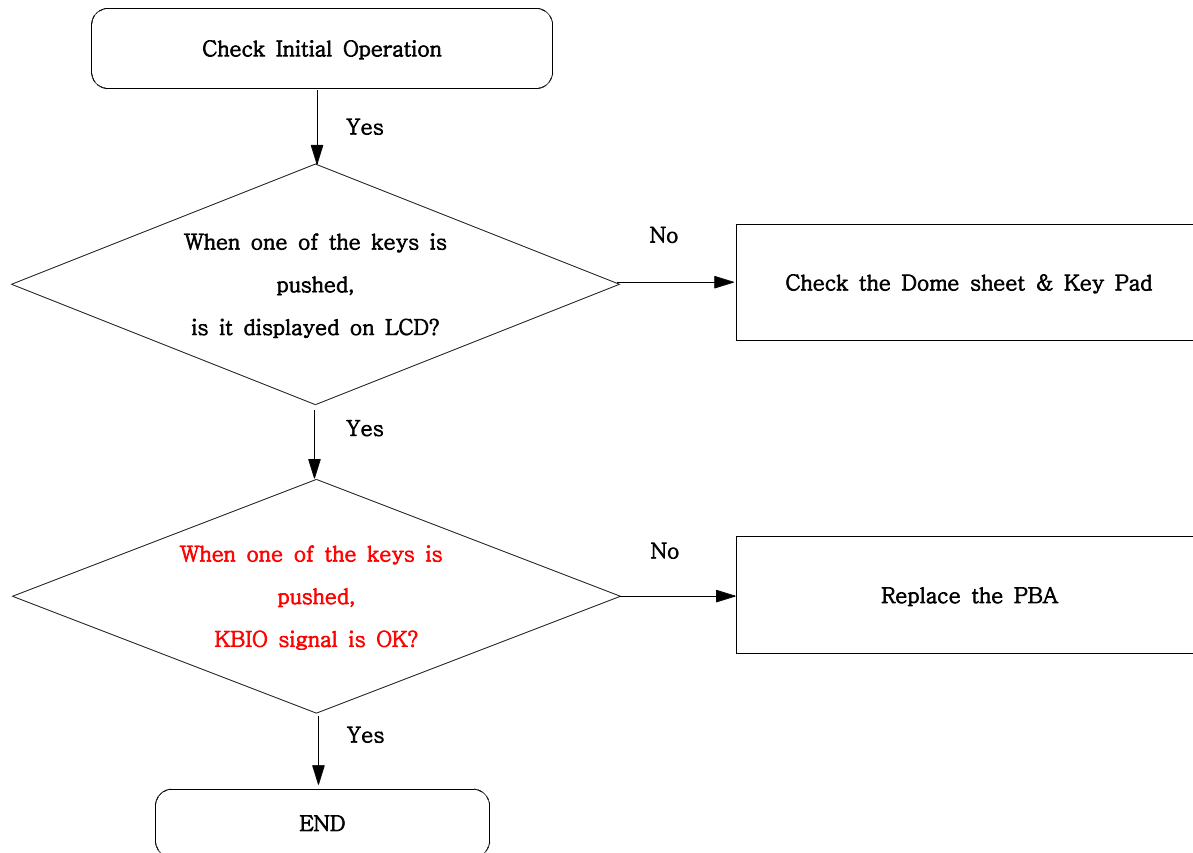


9-6. Speaker Part(Melody)

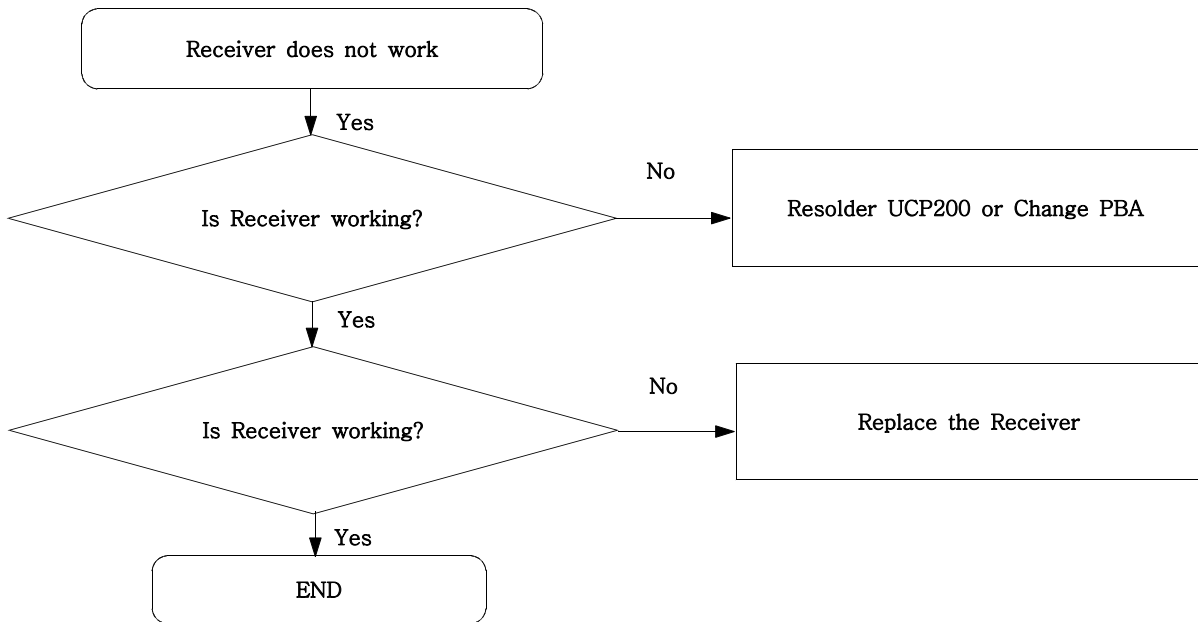




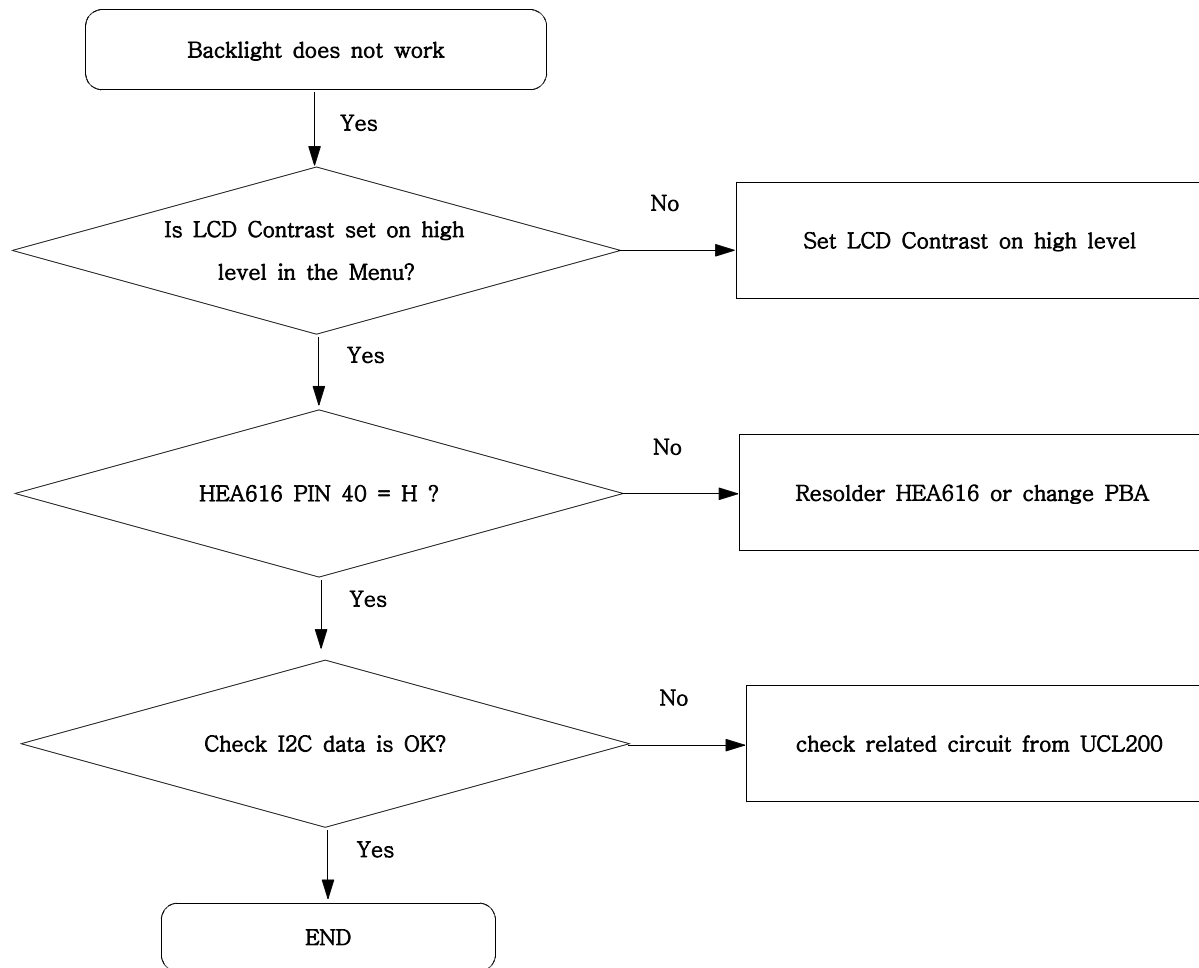
9-7. Key Data Input



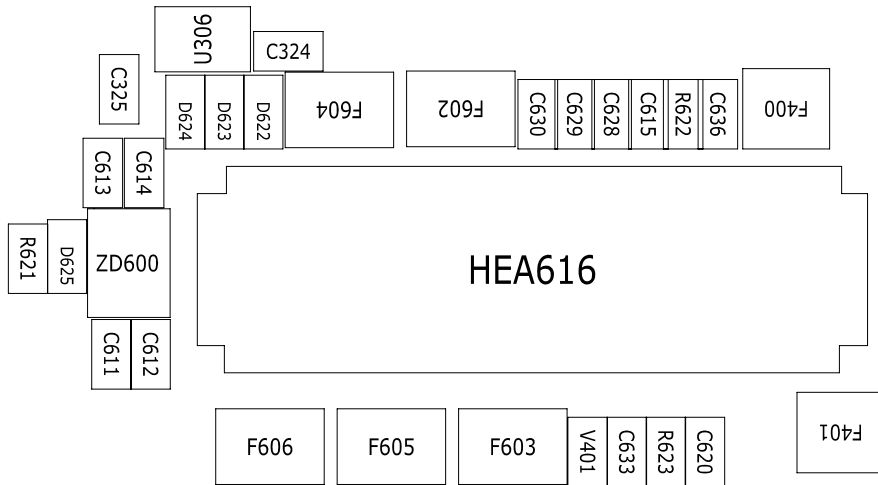
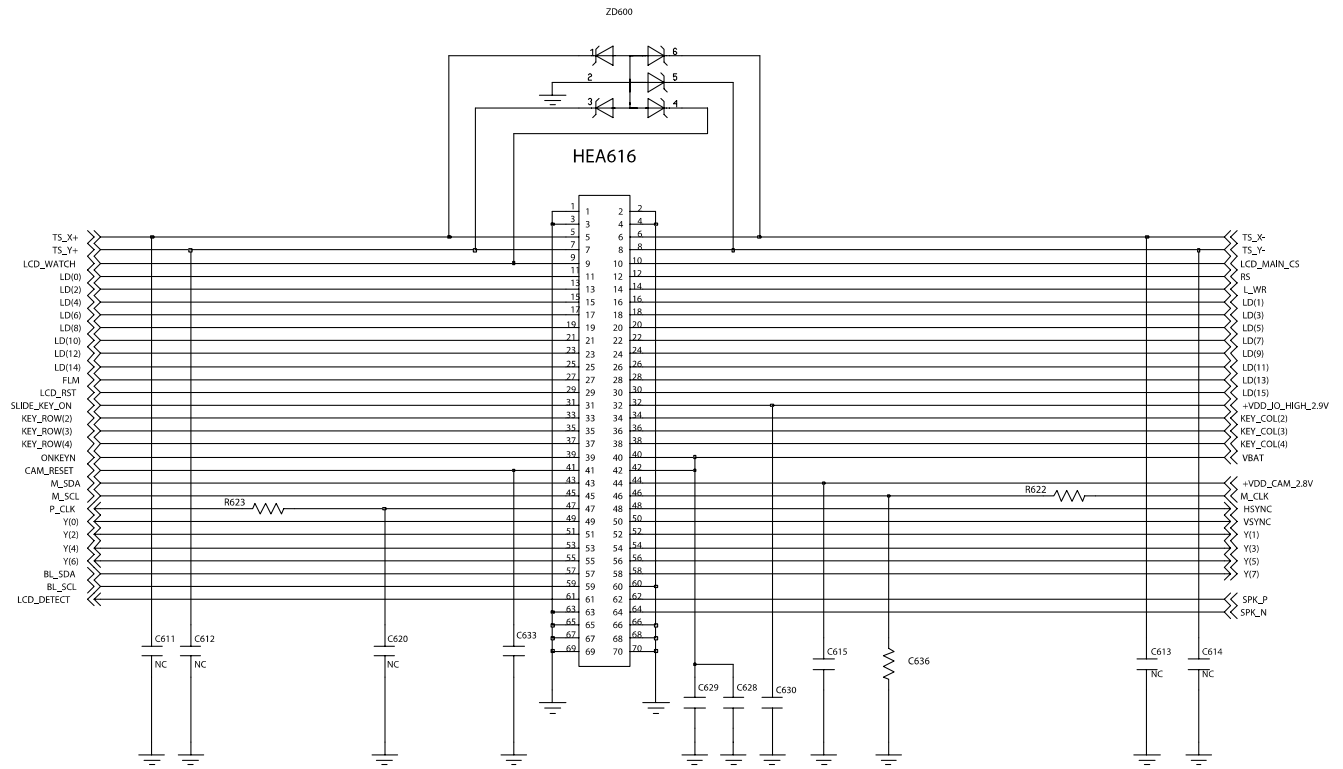
9-8. Receiver Part



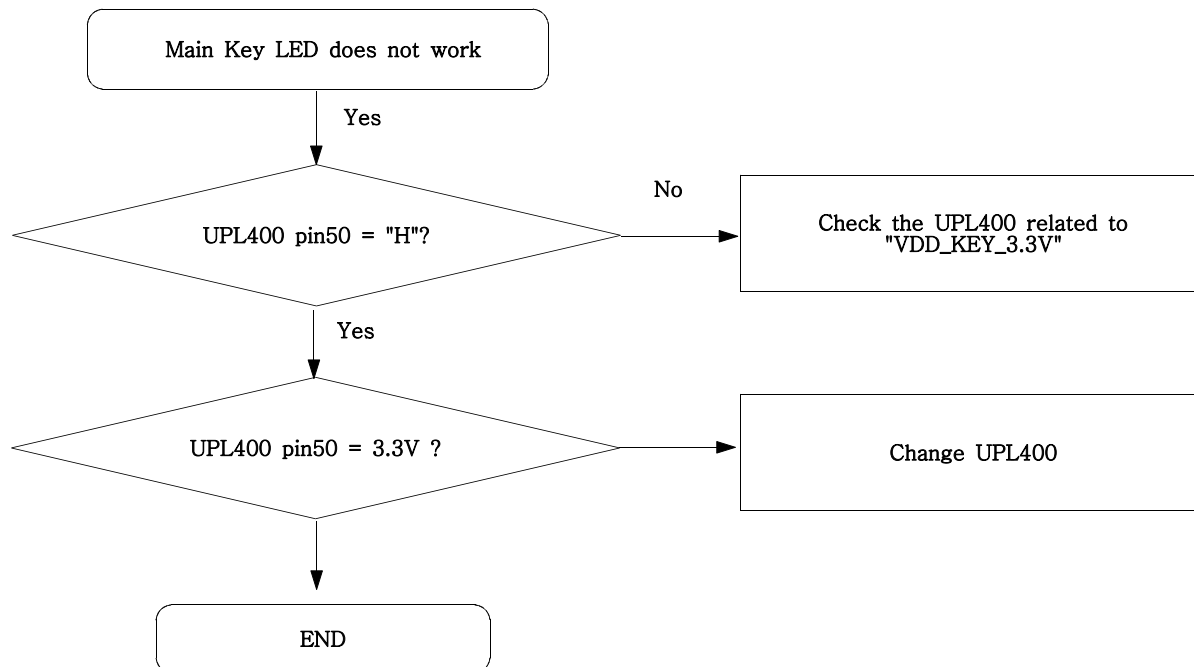
9-9. Back Light (for Color Main LCD)



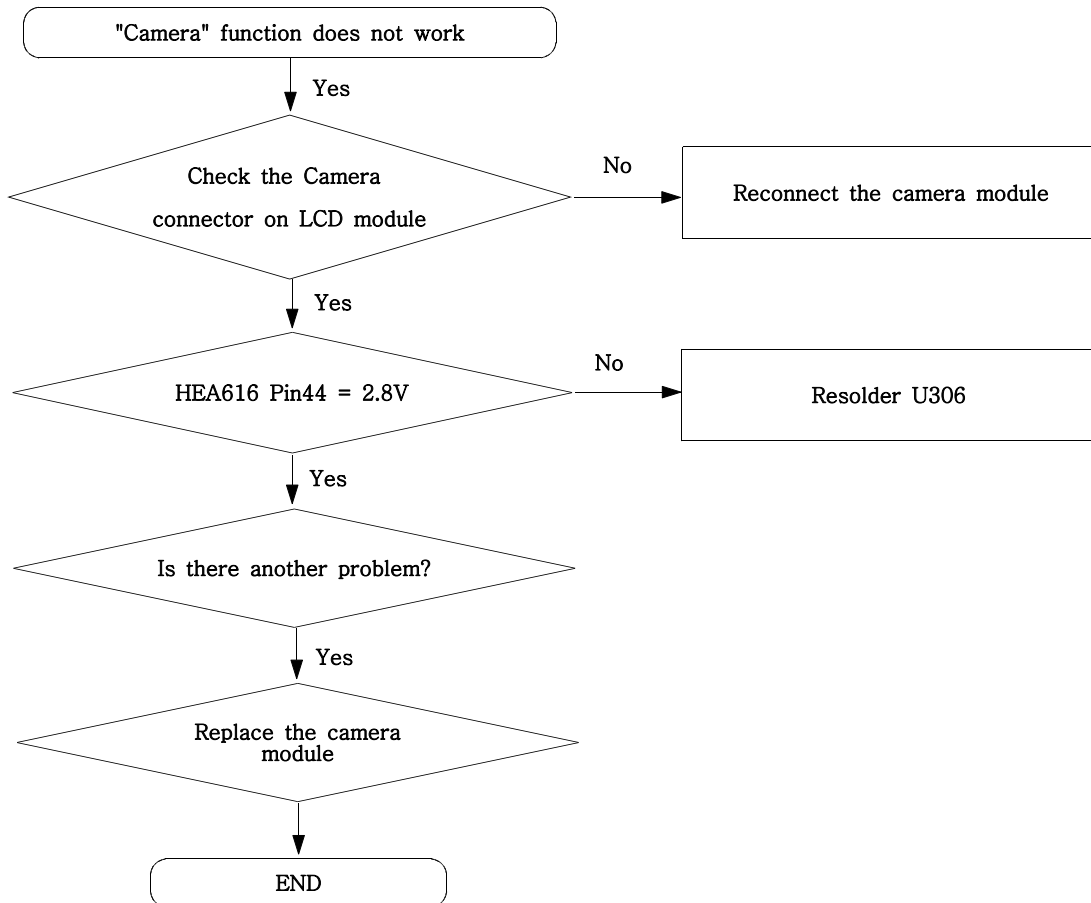
Flow Chart of Troubleshooting

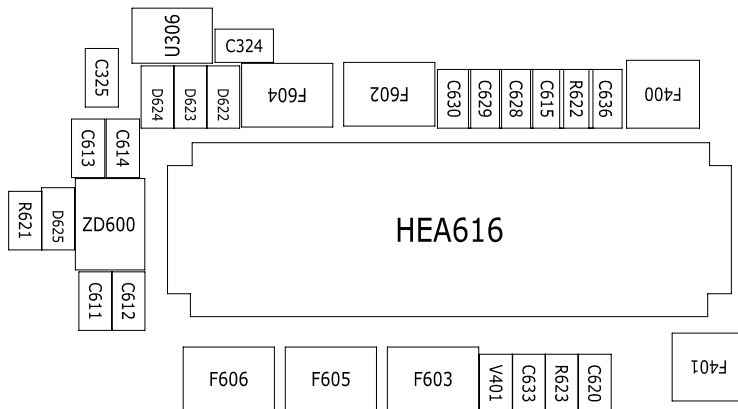
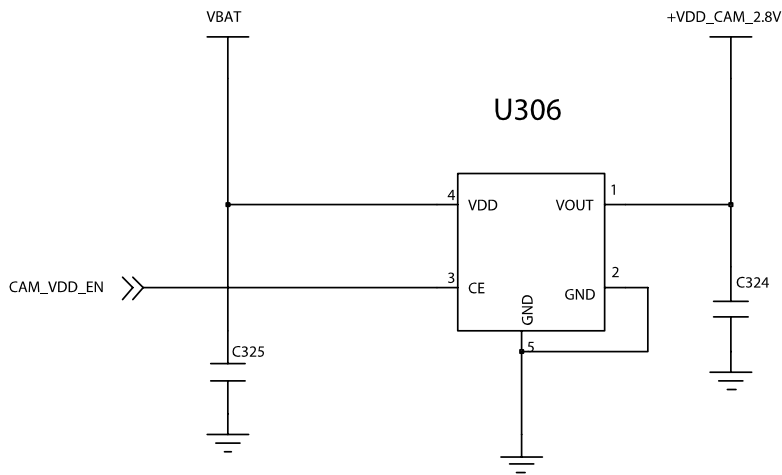
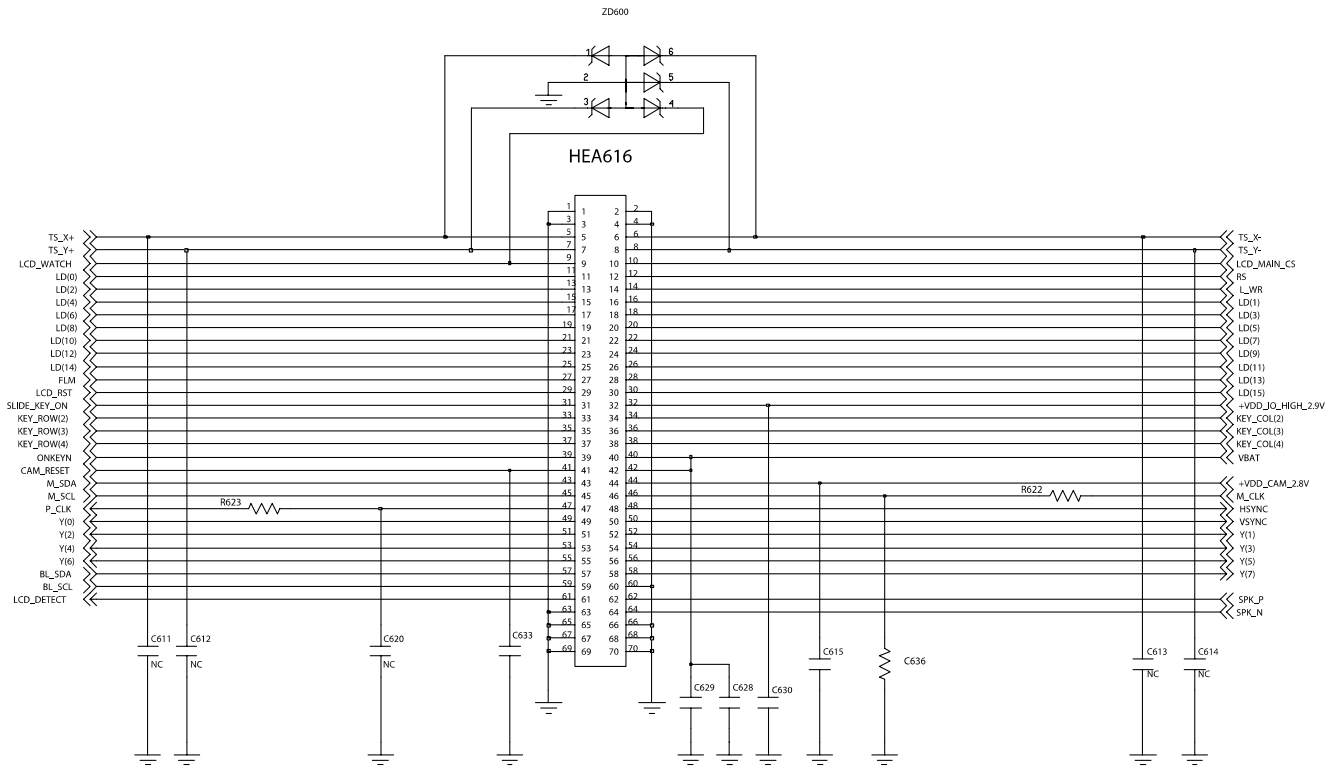


9-10. Key Back Light



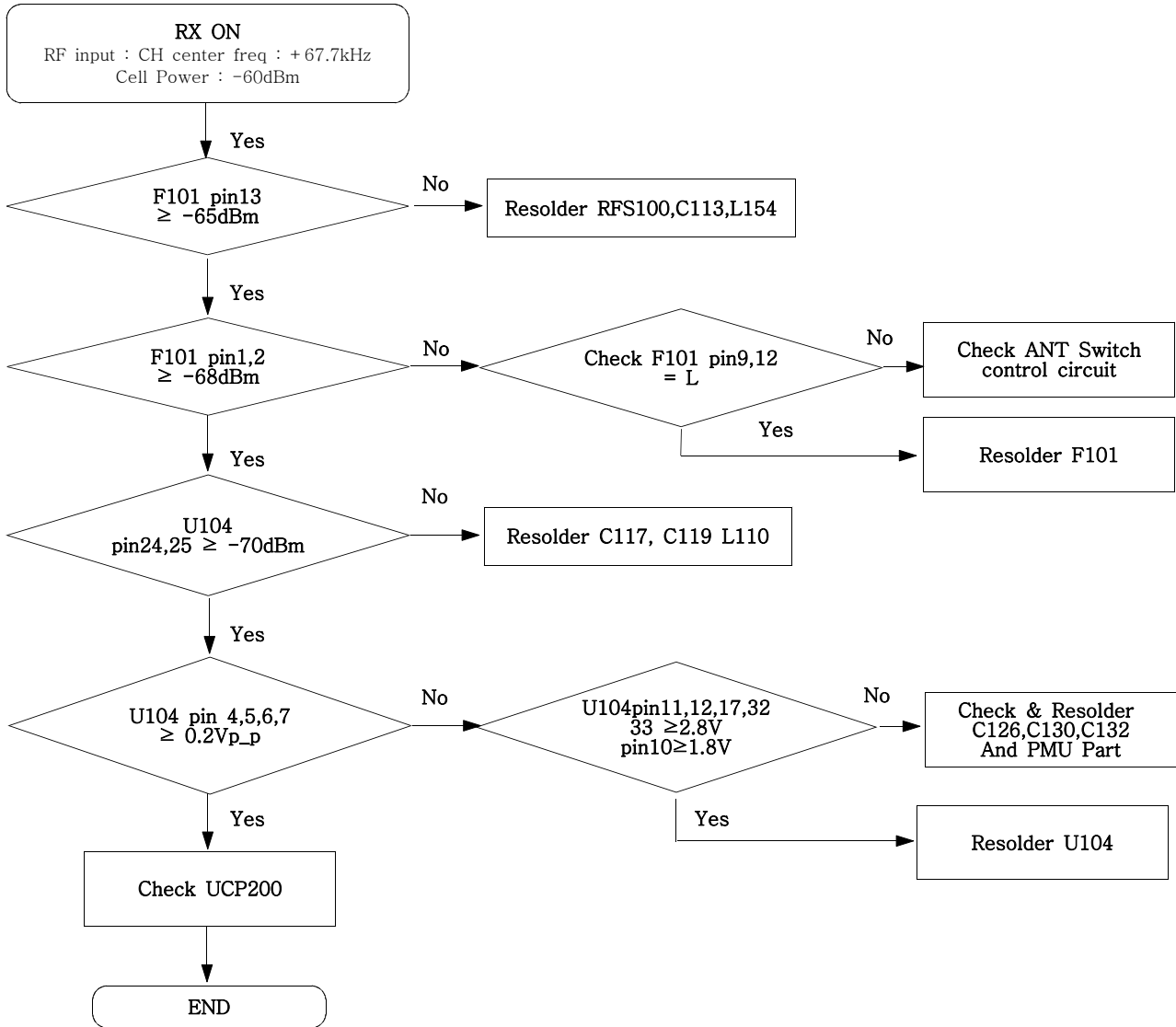
9-11. Camera part



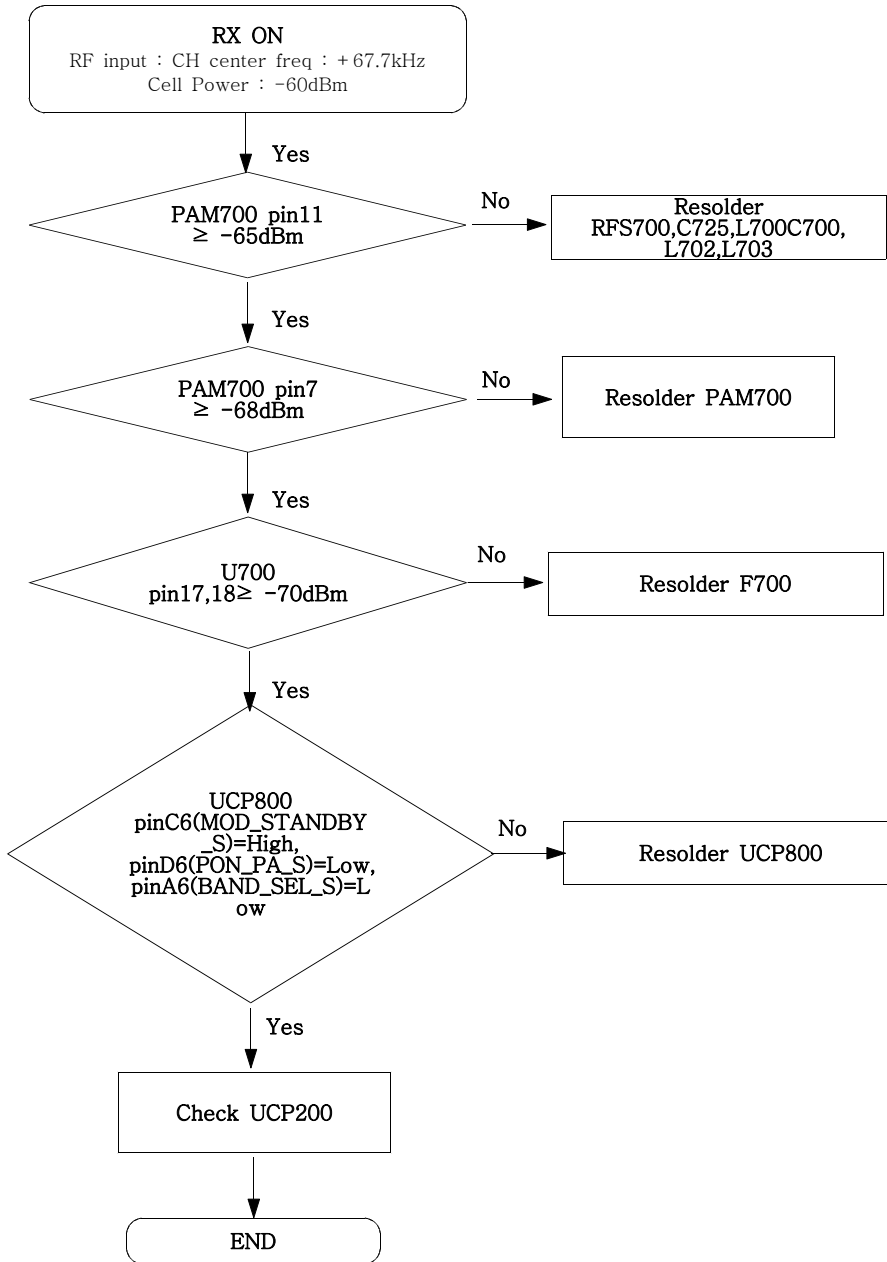


9-12. GSM Receiver

1) Master

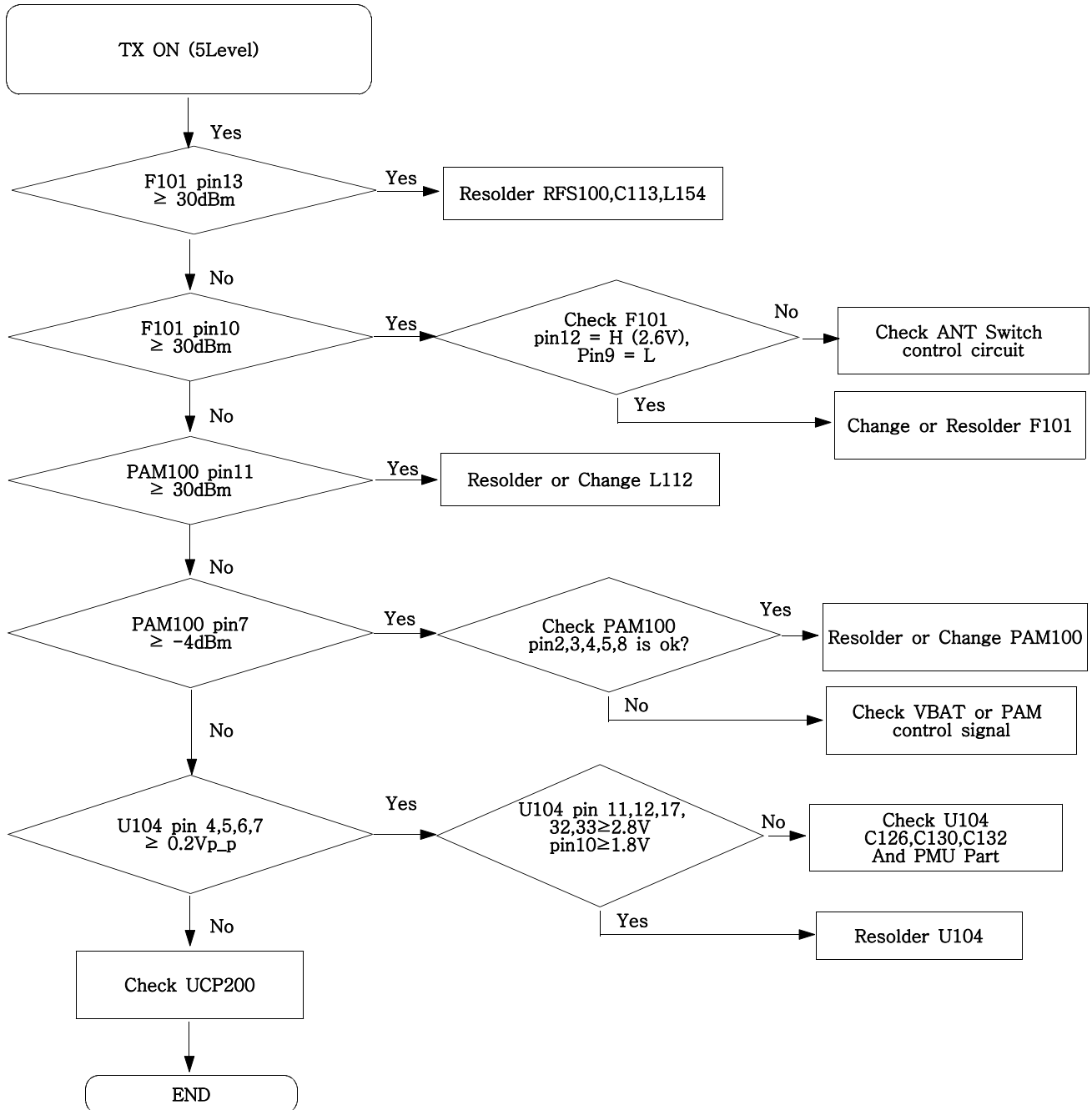


2)Slave

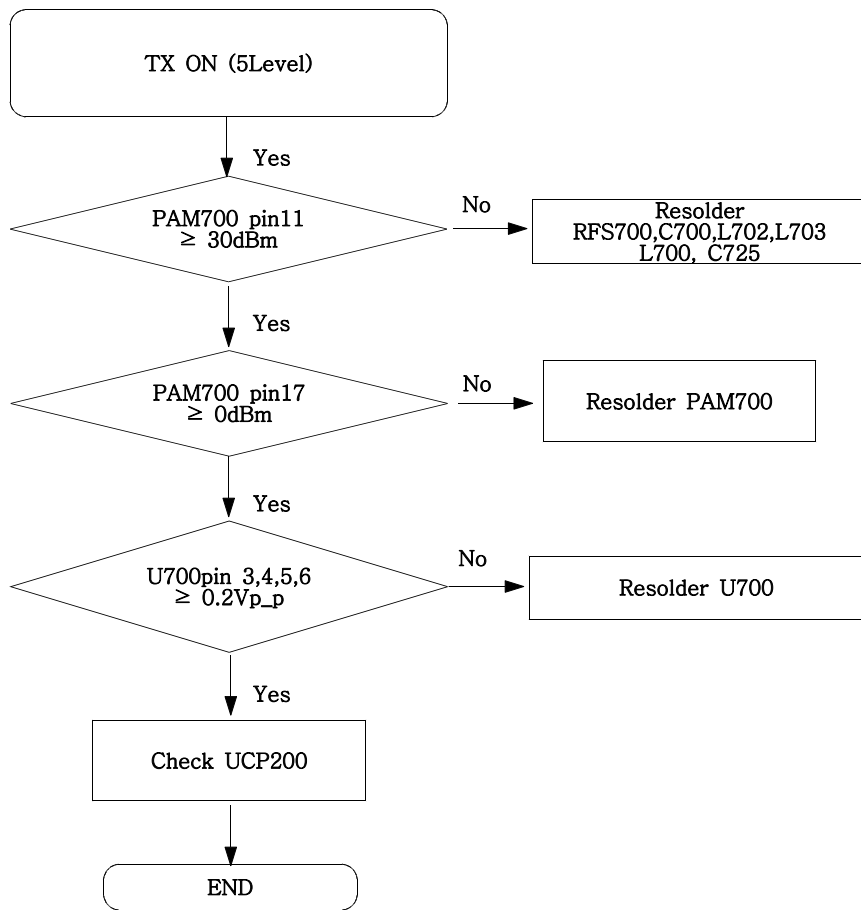


9-13. GSM Transmitter

1) Master

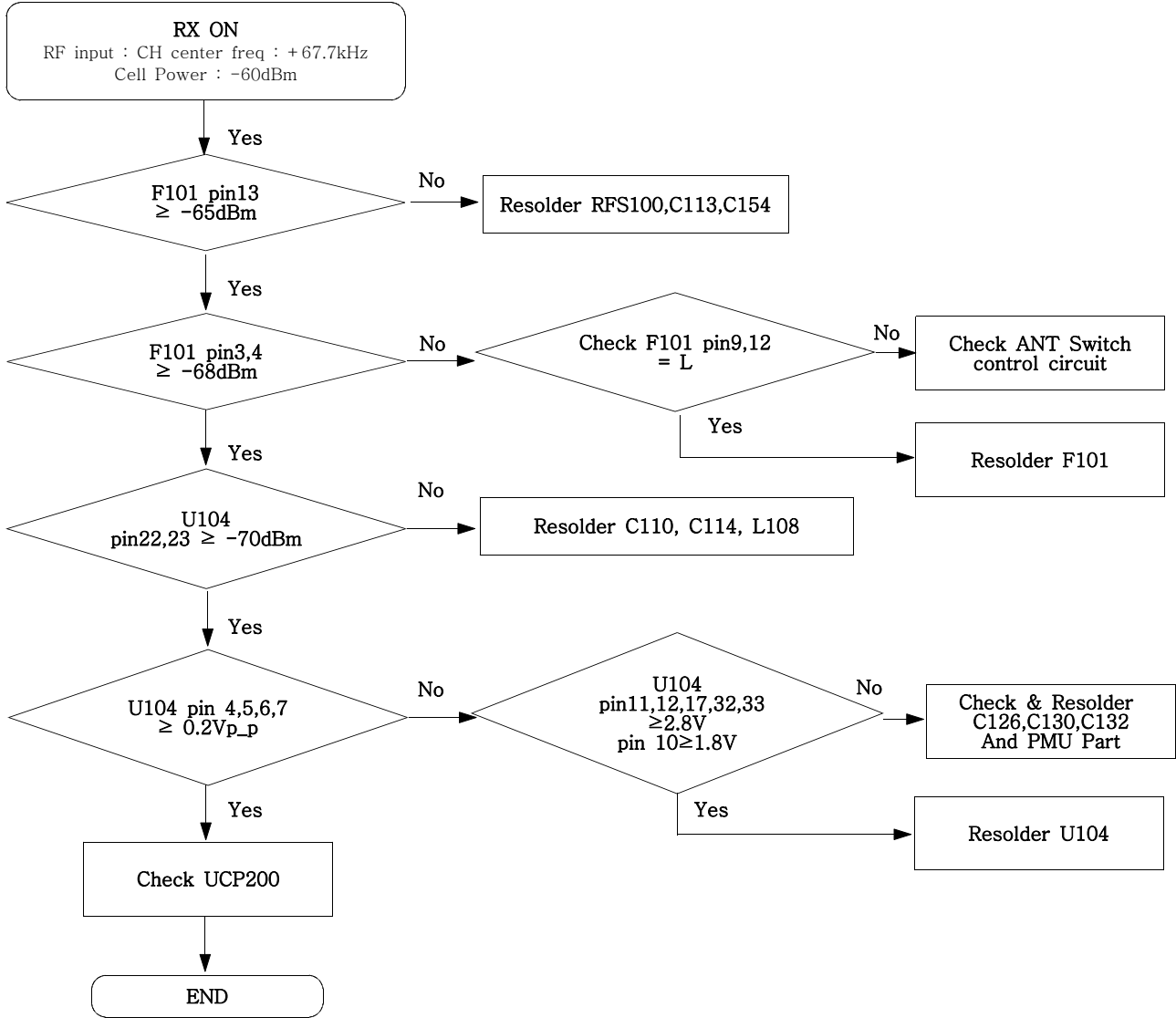


2)Slave

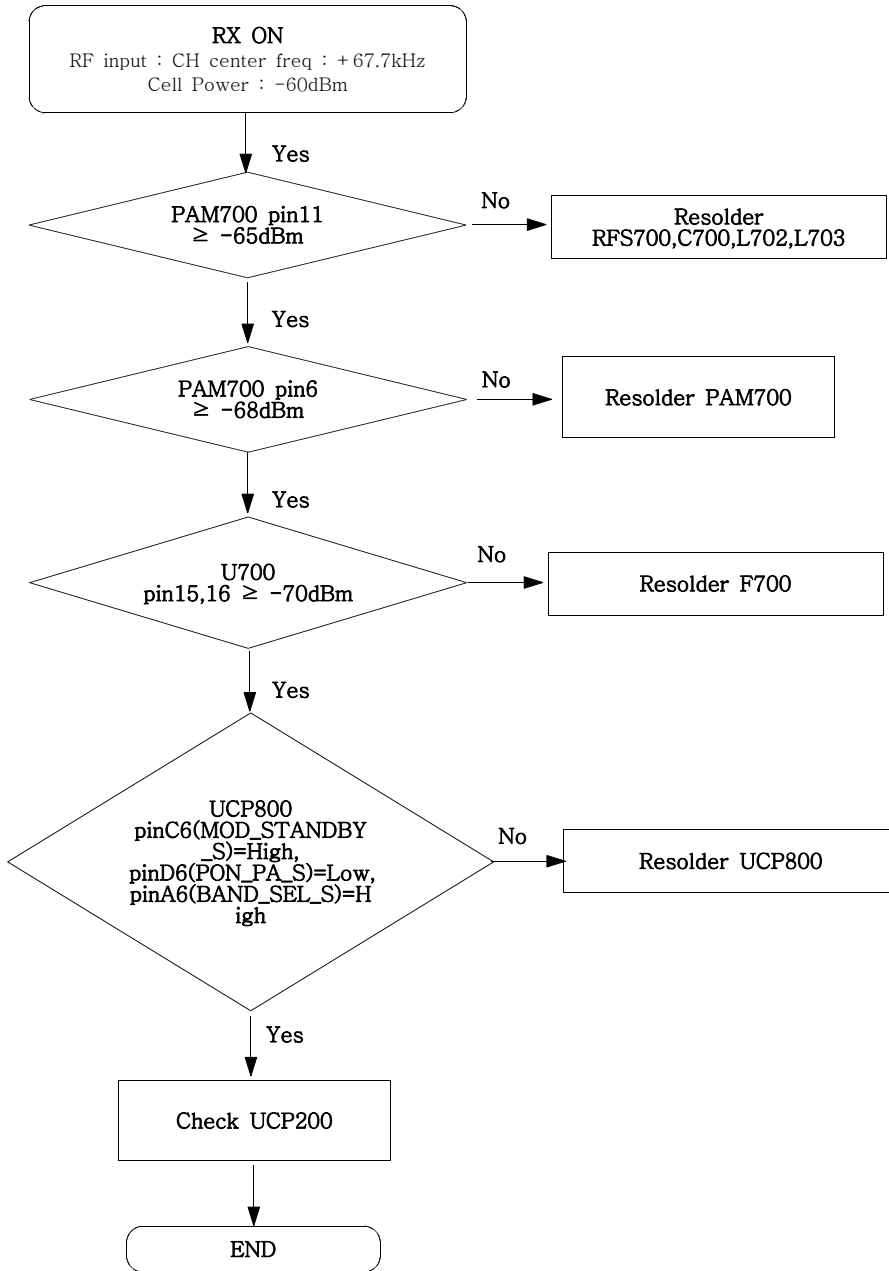


9-14. DCS Receiver

1) Master

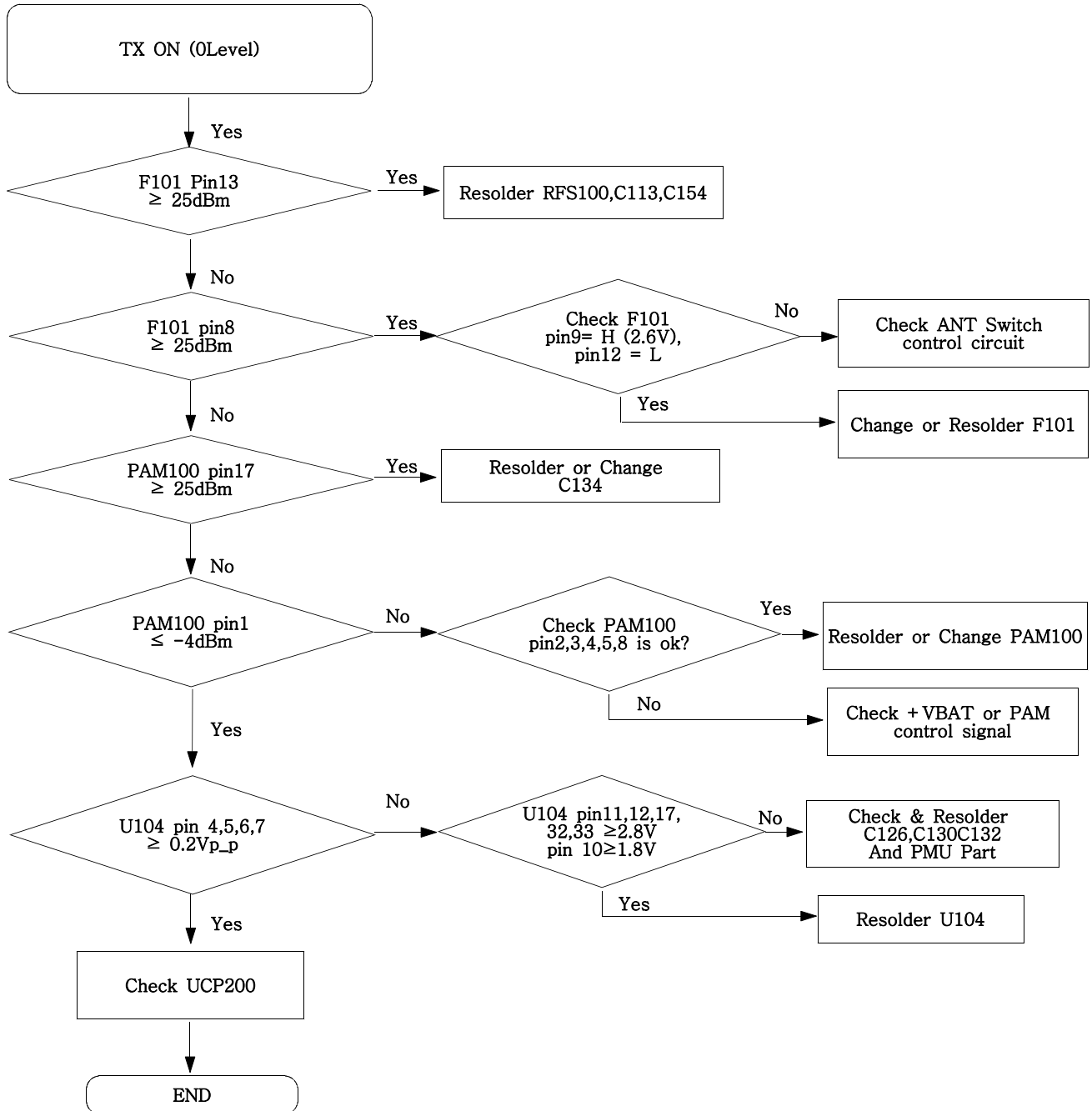


2)Slave

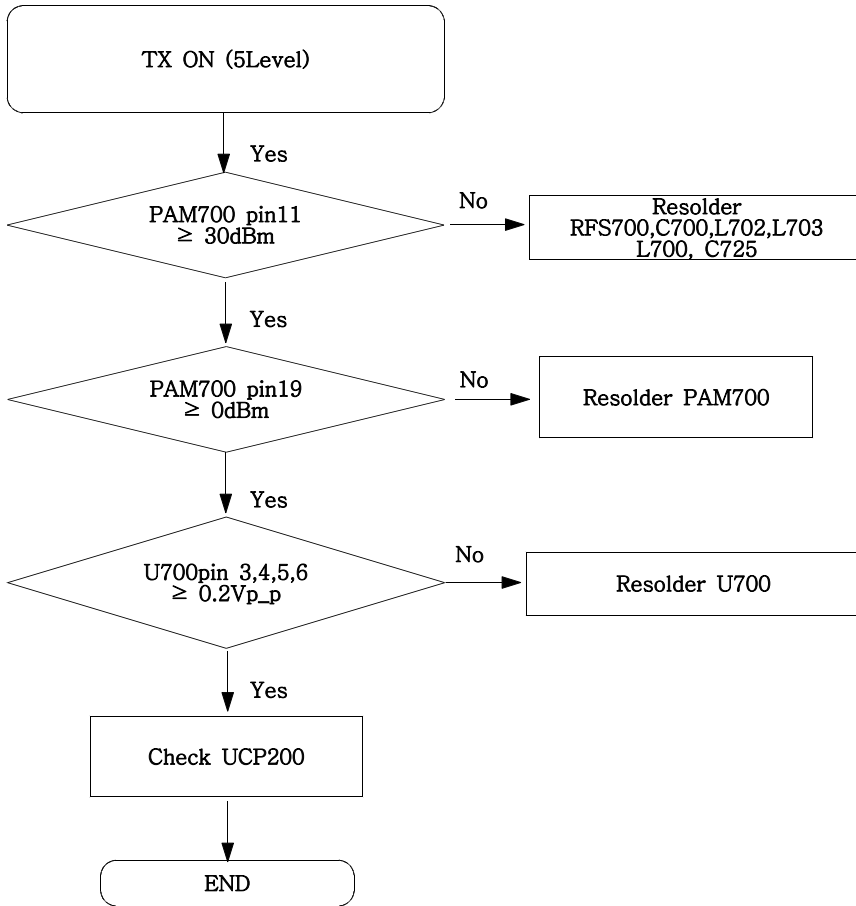


9-15. DCS Transmitter

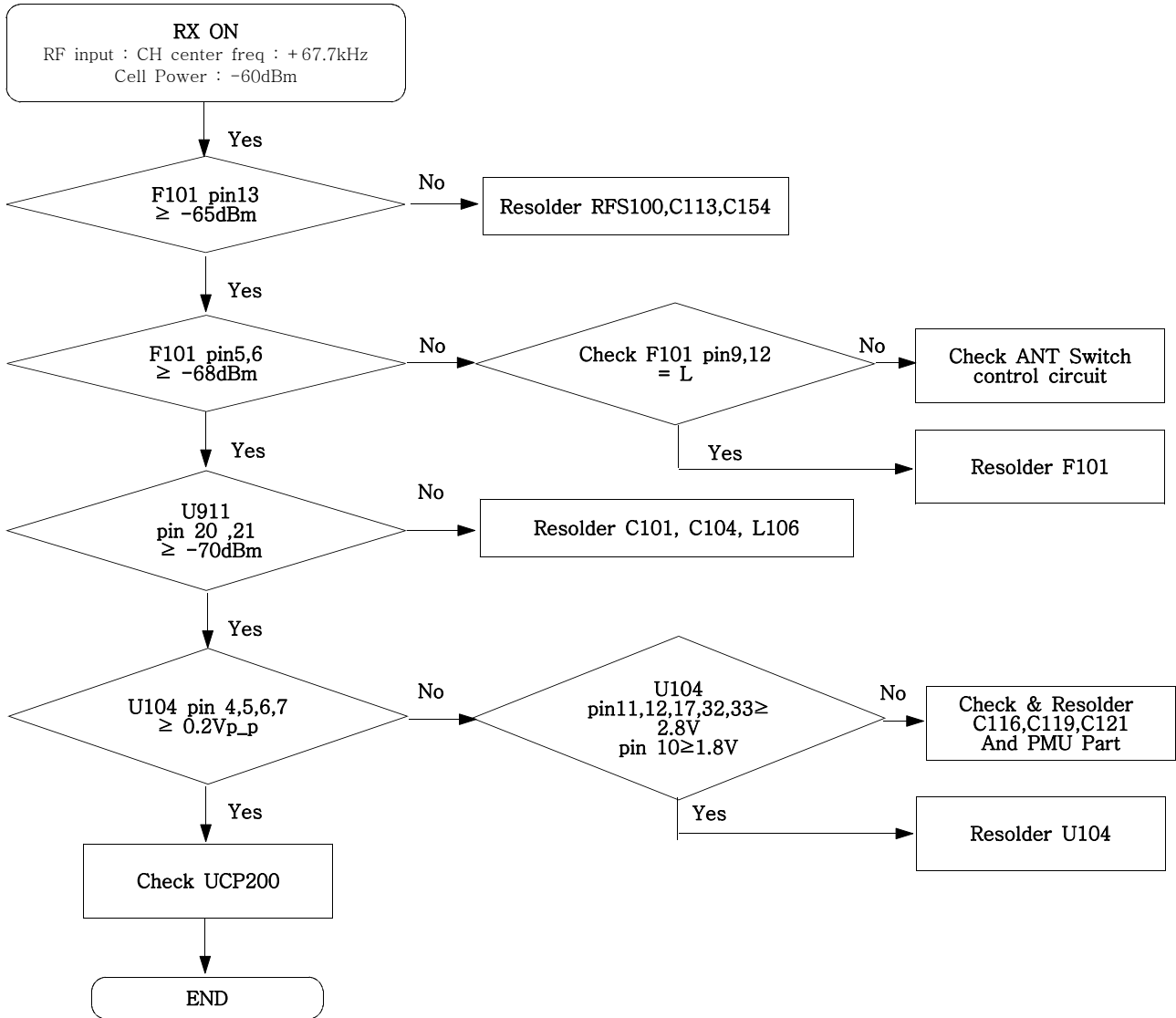
1)Master



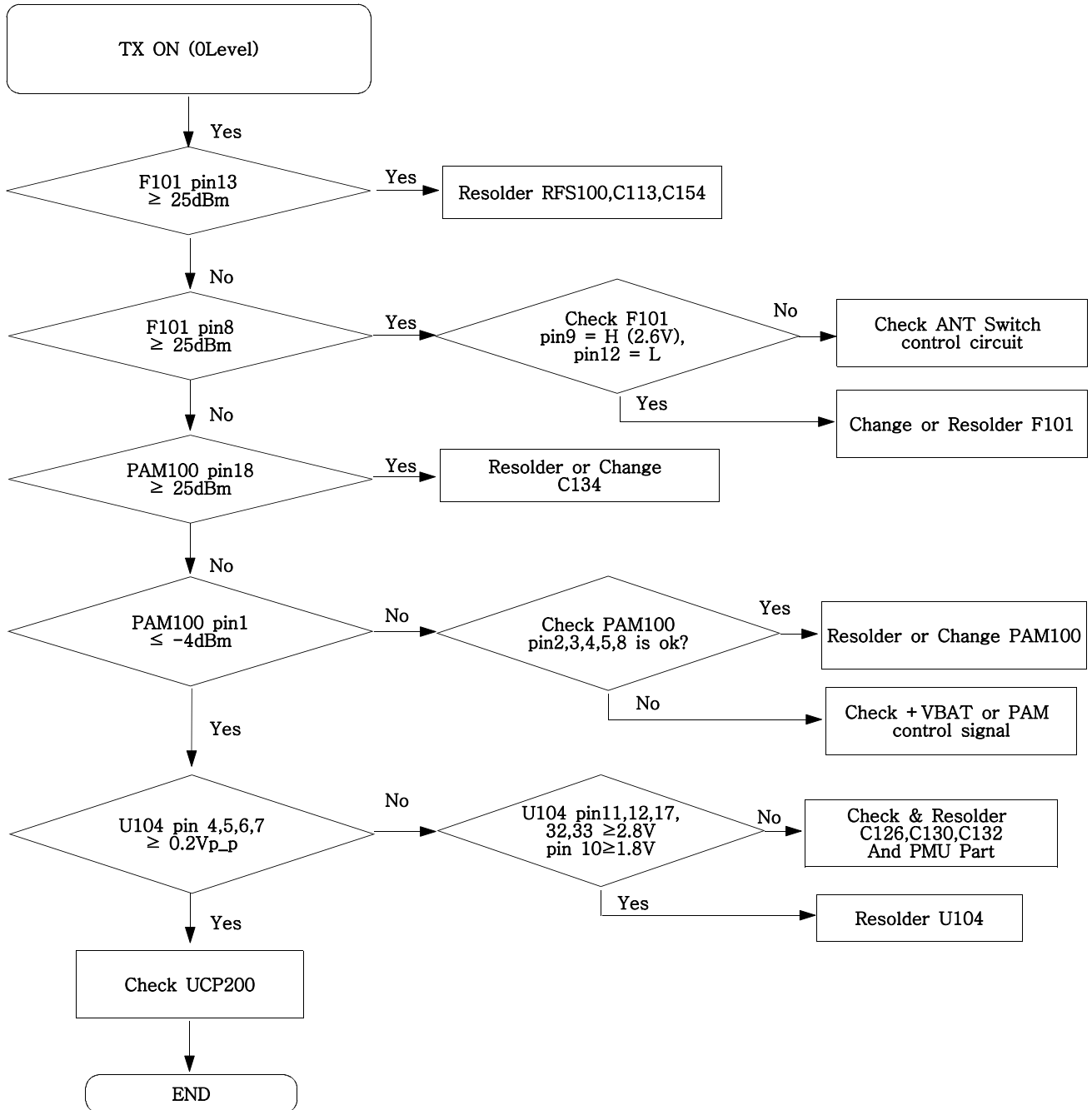
2)Slave



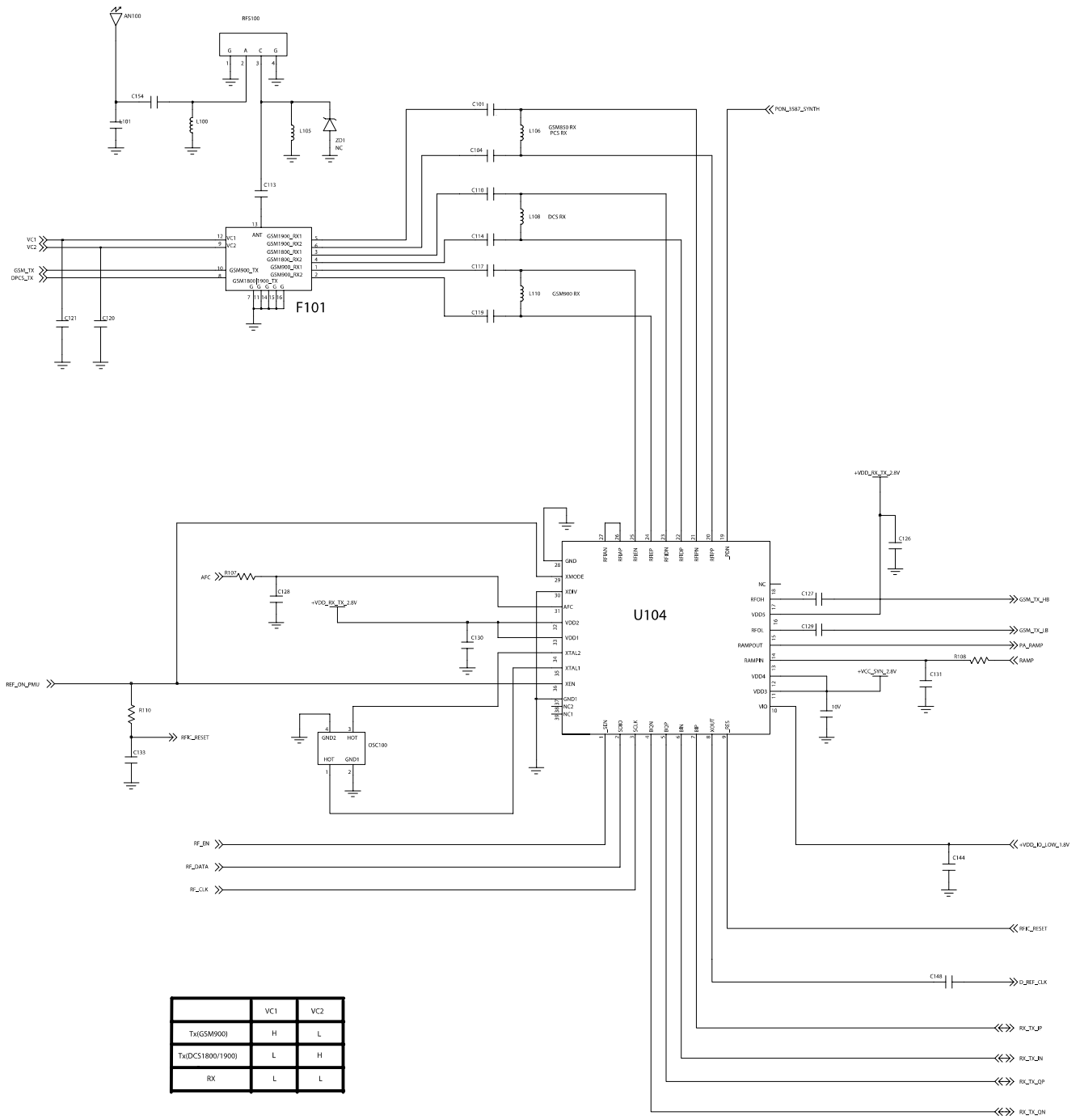
9-16. PCS Receiver

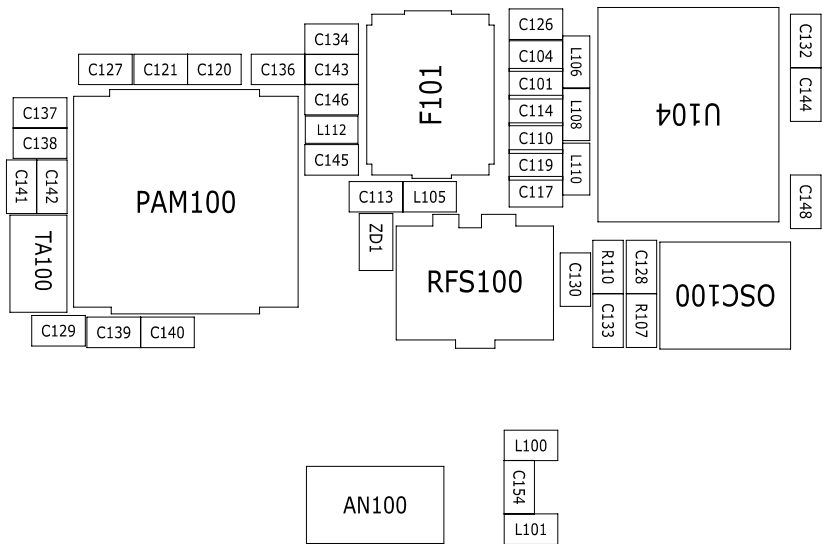
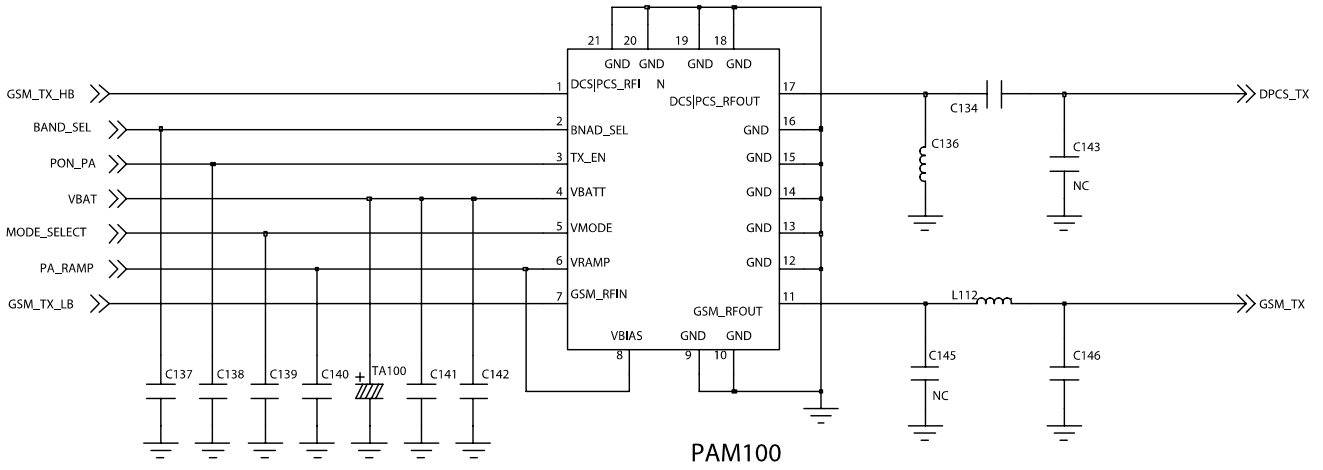


9-17. PCS Transmitter

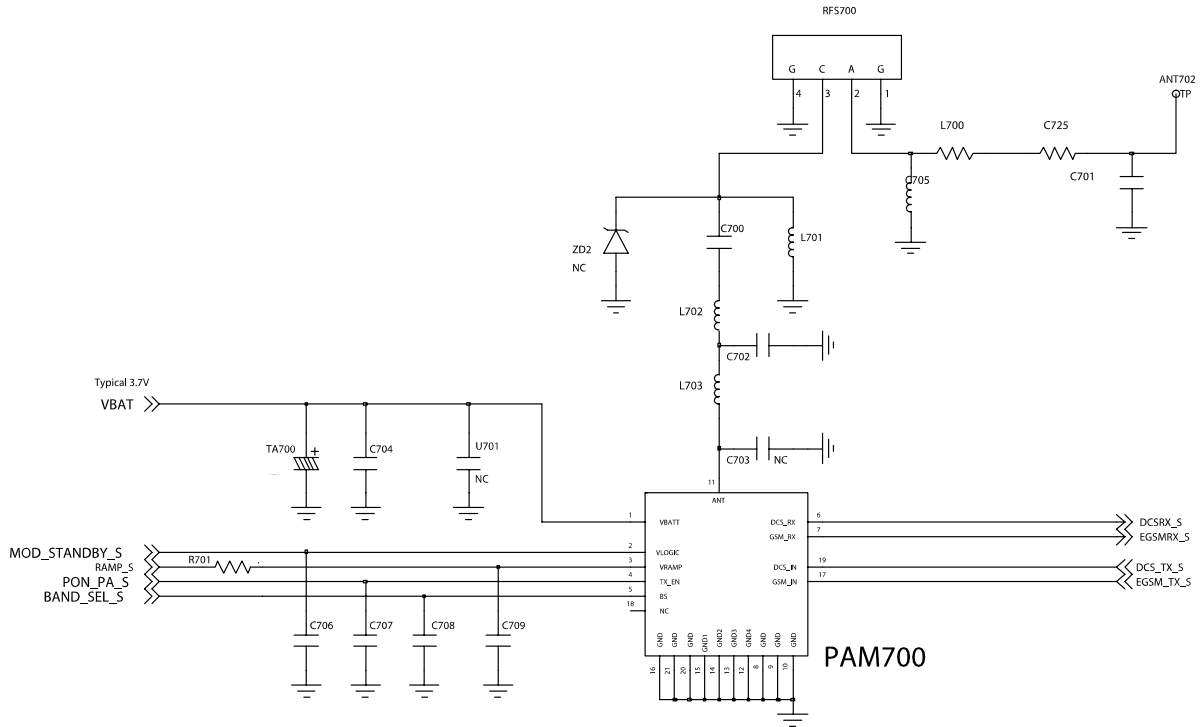


[Master]



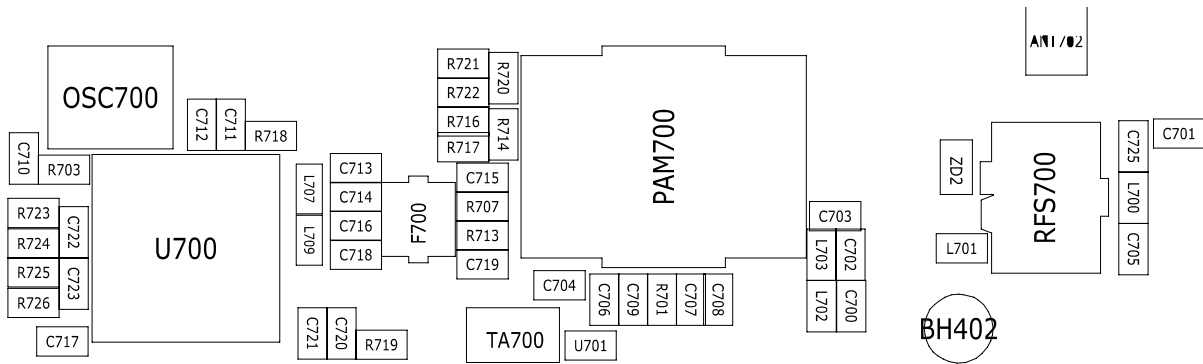
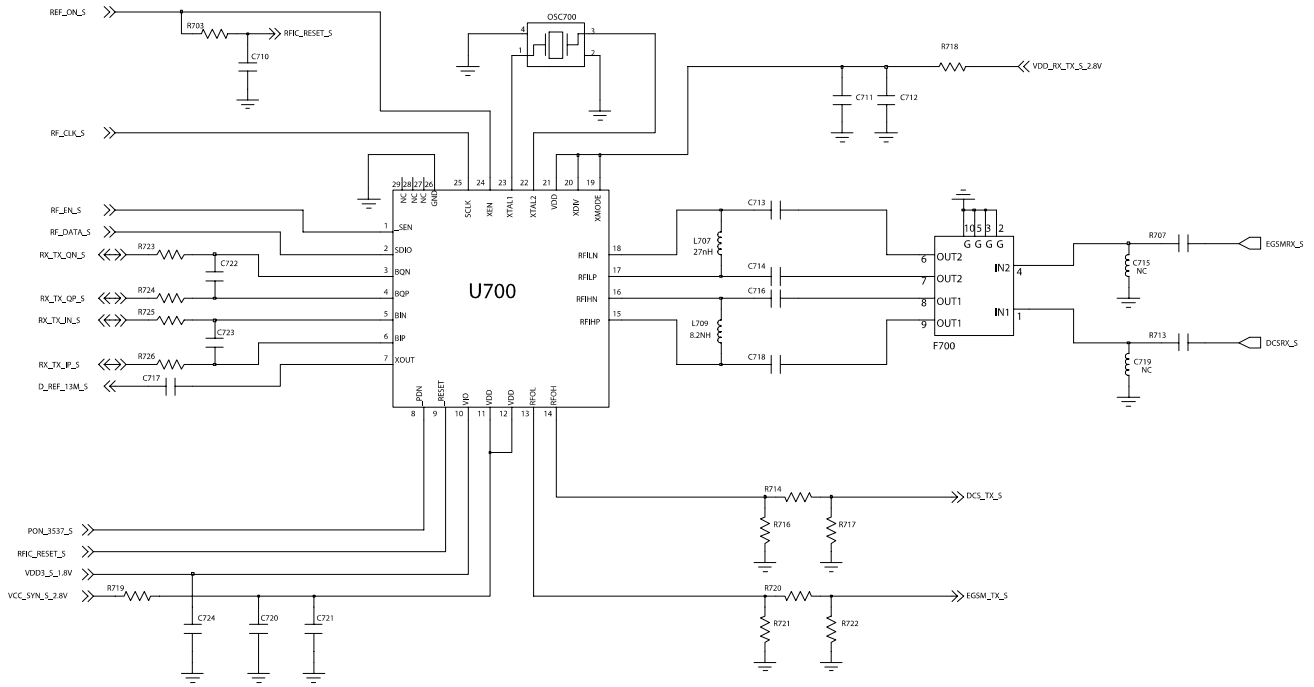


[Slave]

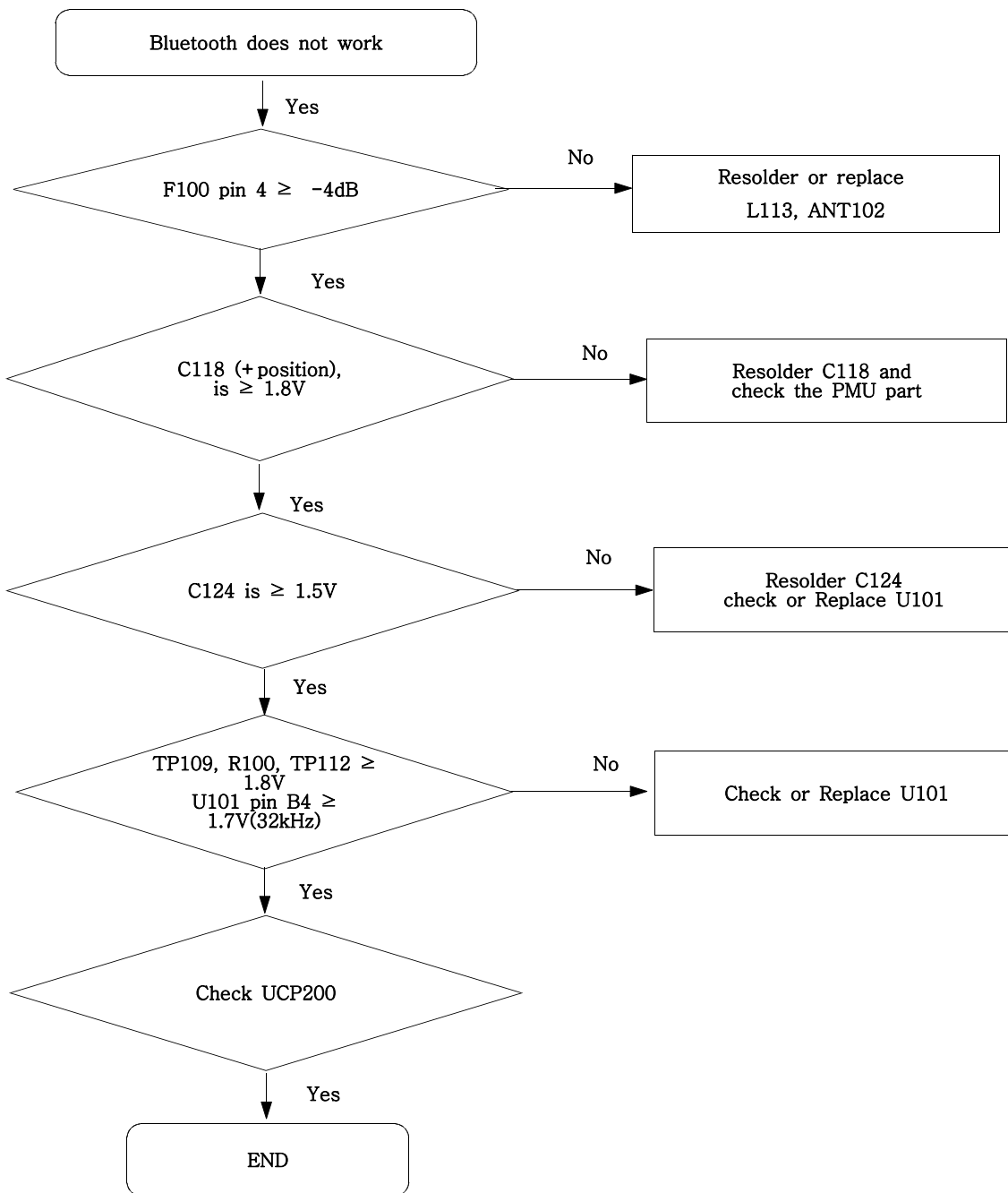


| | MOD_STANDBY | PON_PA | BAND_SEL |
|----------|-------------|--------|----------|
| STAND BY | L | - | - |
| GSM_RX | H | L | L |
| DCS_RX | H | L | H |
| GSM_TX | H | H | L |
| DCS_TX | H | H | H |

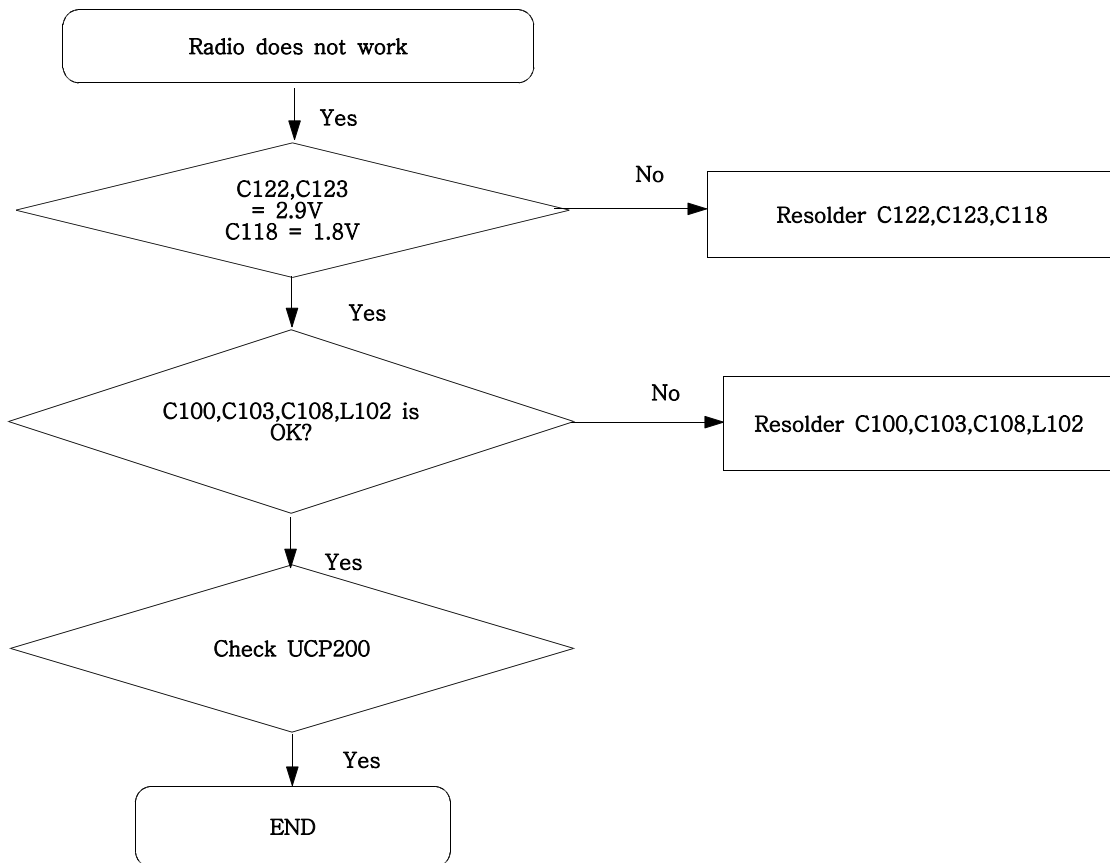
TX Module S/W Control Circuit

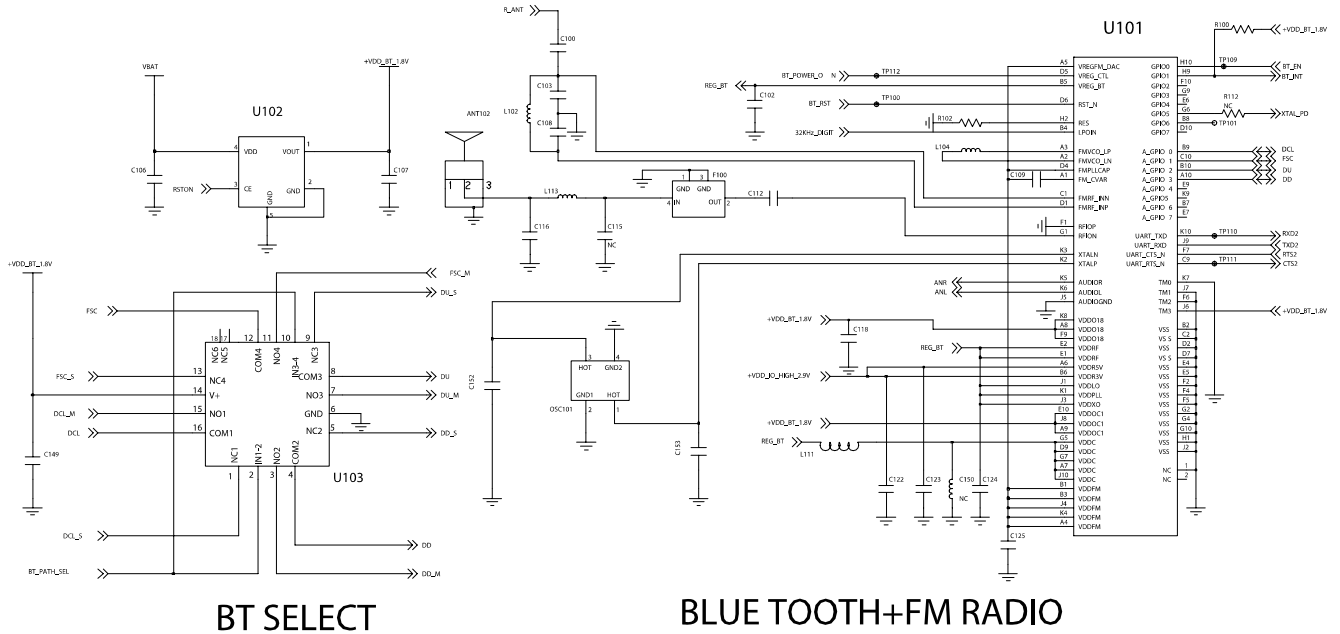


9-18. Bluetooth part



9-19. FM Radio part





BT SELECT

BLUE TOOTH+FM RADIO

