

# 11. Disassembly and Assembly Instructions

## 11-1. Disassembly Instructions

1



2



1) Remove 4 screws of the Rear

1) Remove the Battery and two SIM card.

1) Don't scratch the surface of the handset. Please pay attention.

3



1) Separate the Rear and the Front with holding bottom of the Rear.

1) Don't devote heavily the top of the Rear.

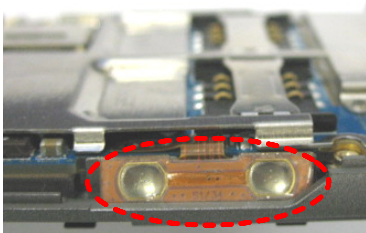
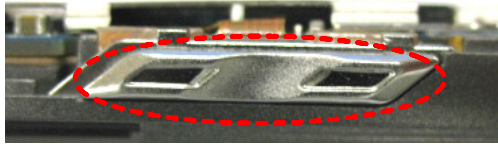
4



1) Separate the center hook and side both hooks with holding the bottom of the Rear

1) Be careful to break the center and both side Hooks.

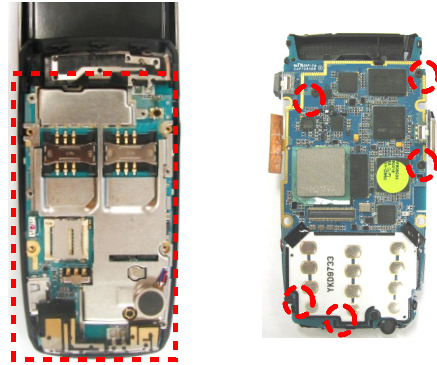
5



- 1) Take off the Volume from the Front
- 2) Take off the Volume Key-FPCB from the Front

1) Be careful to damage the FPCB.

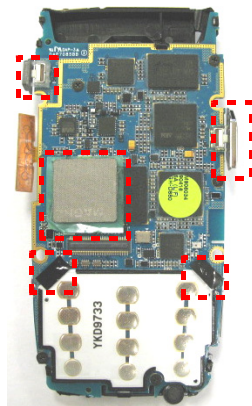
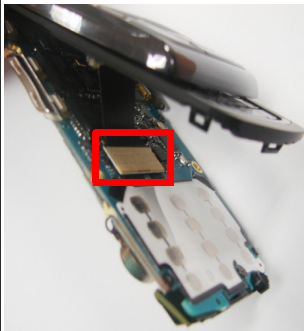
6



- 1) Take off the PBA from the Front.
- 2) Remove 5 screws of the PBA

1) Be careful to damage the FPCB.

7



- 1) Separate Slide-FPCB and the Main PBA.
- 2) Take off the shading tape from the PBA.
- 3) Separate camera and sim changing key

1) Be careful to damage the SLIDE FPCB.  
2) Be careful to damage the DOME SHEET.

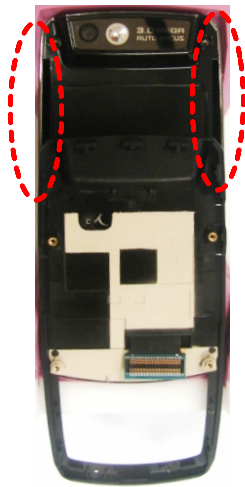
8



- 1) Remove 2 screwcaps of the lower.
- 1) Remove 4 screws of the Front.

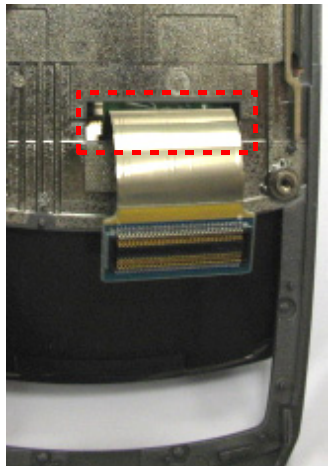
1) Don't scratch the surface of the handset.  
Please pay attention.

9



1) Separate the UPPER and LOWER with pushing the UPPER ahead.

10



1) Pass through the F-PCB

1) Be careful to damage the Hooks of the Front.

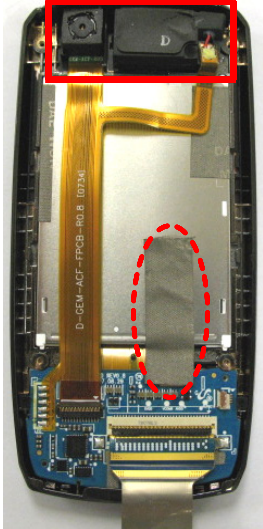
1) Be careful to damage the S-FPCB  
2) Pass through the S-FPCB with closing the Slide.

11



1) Remove the green tape

12

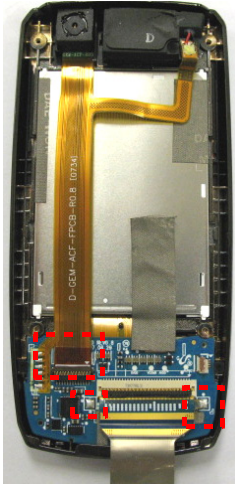


1) Separate the camera and apeaker  
2) Remove the Conductive tape

1) Don't scratch the surface of the handset.  
Please pay attention.

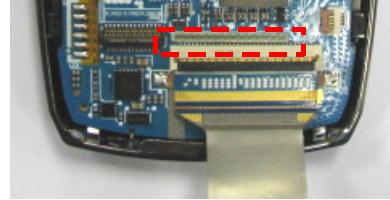
1) Don't scratch the surface of the handset.  
Please pay attention.

13



- 1) Separate the Camera-FPCB from connector with opening the Actuator.
- 2) Desloder 2point and Separate the LCD-FPCB from connector with opening the Actuator.

14

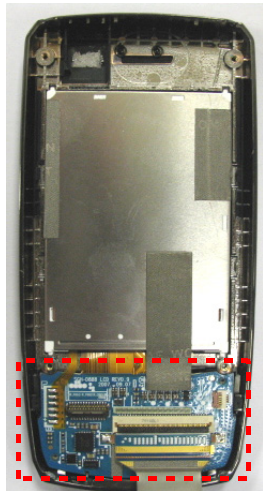


- 1) Remove the insulating tape from the SUB PBA

- 1) Don't scratch the surface of the handset. Please pay attention.

- 1) Be careful to damage the Sub PCB-FPCB.

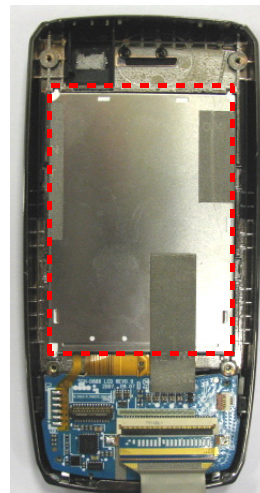
15



- 1) Separate the SUB PBA from the Upper.

- 1) Be careful to damage the Sub PCB Connector.

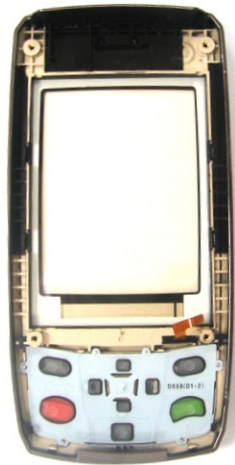
16



- 1) Separate the LCD from the Upper.

- 1) Be careful to damage the Speaker and wire.

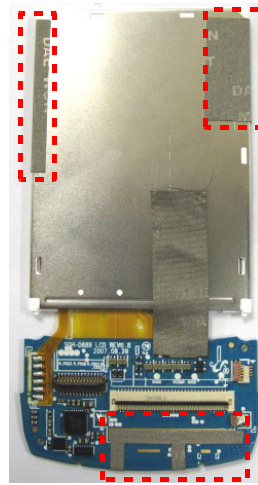
17



1) Separate the NAVY KEYPAD from the Upper.

1) Be careful to damage the Camera and FPCB.

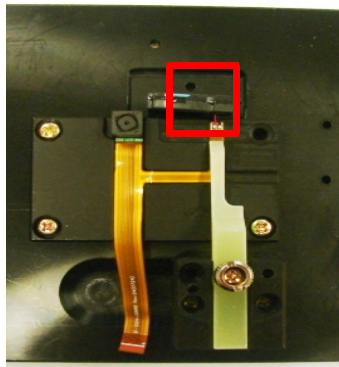
18



1) Remove the Conductive three tapes

1) Be careful to damage the S-FPCB.

19

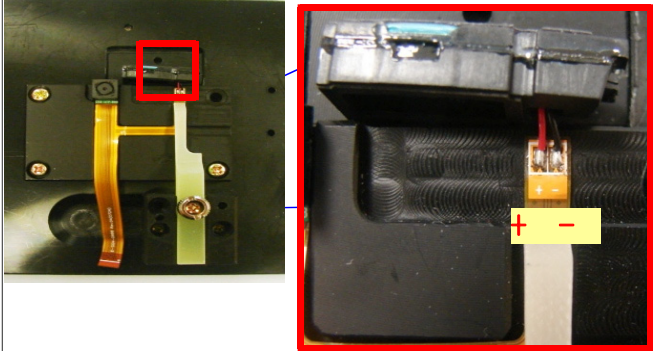
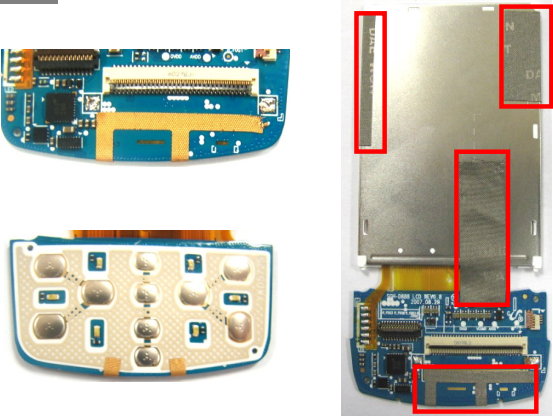
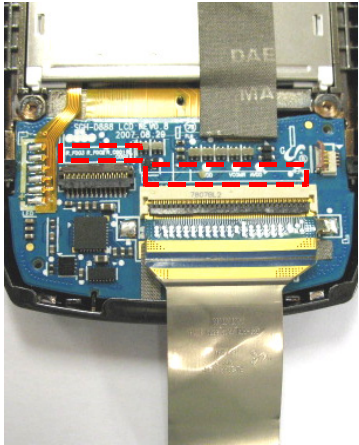
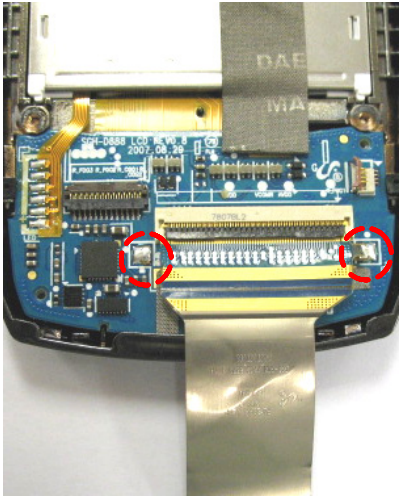


1) Desolder speaker wire and separate it

1) Be careful to damage the Sub PCB-FPCB.



## 11-2. Assembly Instructions

<p style="text-align: center;">1</p>  <p style="text-align: center;">1) Solder the wire of the Speaker and Bond it.</p>	<p style="text-align: center;">2</p>  <p style="text-align: center;">1) Attach four conducting tape on the Actuators</p>
<p>1) Solder with paying attention to the polarity. 2) Bond with paying attention to the base line of the bond.</p>	<p>1) Be careful to damage the Camera and Sub PCB-FPCB</p>
<p style="text-align: center;">3</p>  <p style="text-align: center;">1) Attach fixing tape and Insulating tape</p>	<p style="text-align: center;">4</p>  <p style="text-align: center;">1) Insert LCD F-PCB and Solder two point</p>
<p>1) Be careful to damage the S-FPCB</p>	<p>1) Pay attention to the base line.</p>

5

Keep in order the wire

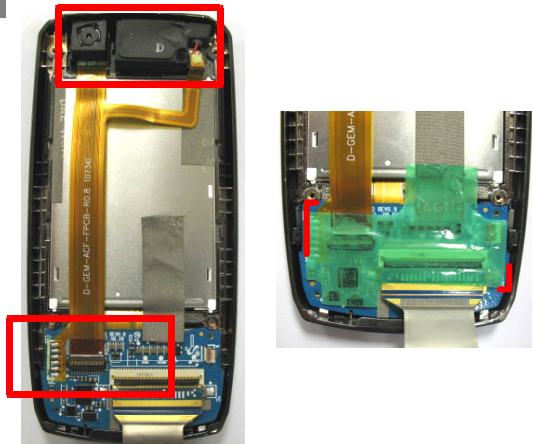


- 1) place navy keypad
- 2) insert lcd pannel to upper and place the Subpba

1) Arrange subpba orderly

6

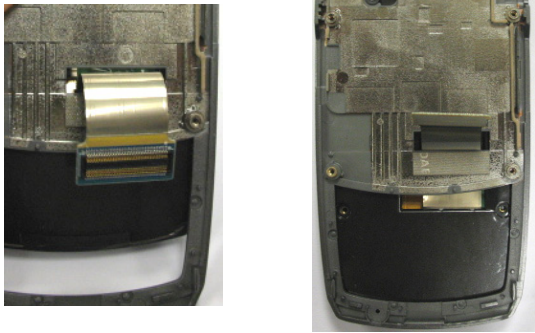
Keep in order the wire



- 1) Remove the fixing tape cover and insert camera FPCB
- 2) Place camera and apeaker
- 3) Attach a insulation tape

1) Be careful to damage the Speaker wires.

7



- 1) Pass through the FPCB into hole of lower and front with closing slide
- 2) Assemble the lower and front with upper orderly

1) Don't scratch the surface of the handset. Please pay attention.

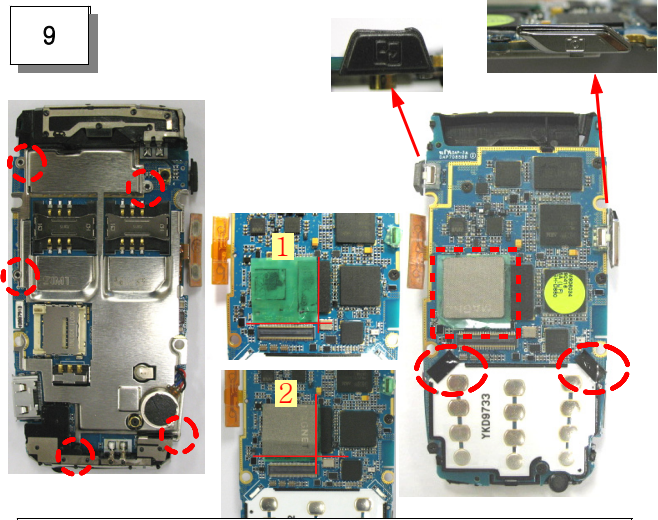
8



- 1) Tighten 4 screws on the Lower orderly.
- 2) Attach 2 screw caps on the Lower .

1) Don't scratch the surface of the handset. Please pay attention.

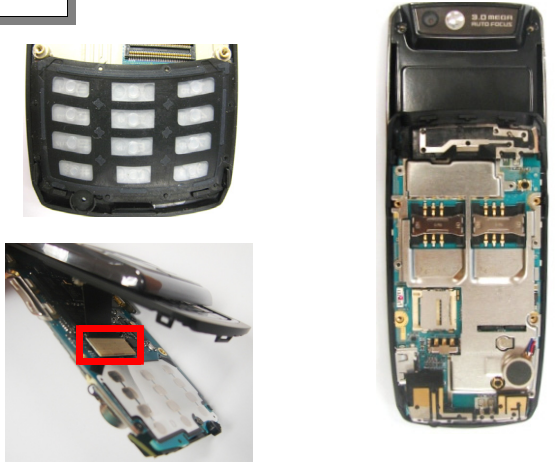
9



- 1) Tighten 4 screws on pba
- 2) Attache the shading tape, insulation, conduction tape on the Main PBA
- 3) Assemble camera and sim changing key

1) Don't scratch the surface of the handset. Please pay attention.

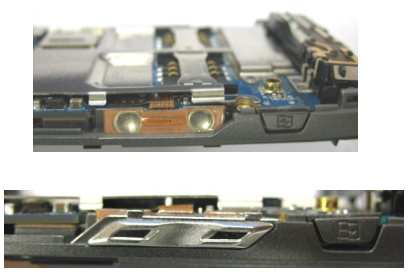
10



- 1) Place a keypad
- 2) Insert S-FPCB on the Main PBA Connector.
- 3) Insert main pba to front orderly

1) Be careful to damage the S-FPCB.

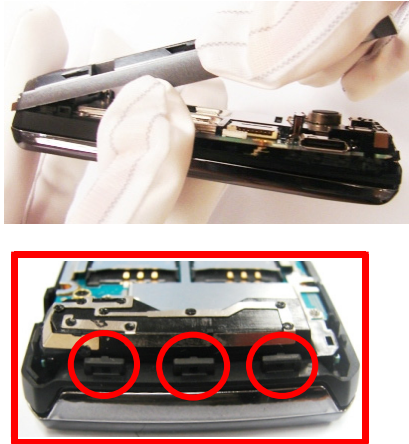
11



- 1) Attach the Volume key FPCB with fixing tape
- 2) Insert the Volume key to guide holes.

1) Pay attention to the direction.

12




- 1) Put in the Rear on the Fornt from Top to bottom clockwise.

1) Pay attention to gap.



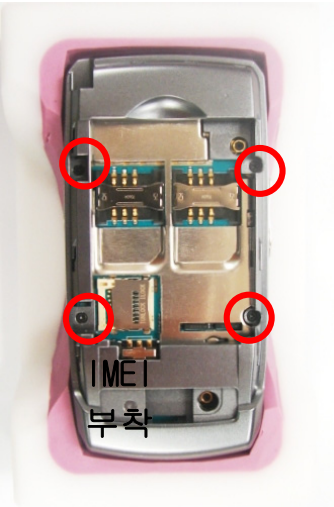
13



1) Push the rear from upside to downside

1) Don't scratch the surface of the handset.  
Please pay attention.

14



1) Tighten 4 Screws of the Rear orderly.

1) Don't scratch the surface of the handset.  
Please pay attention.

