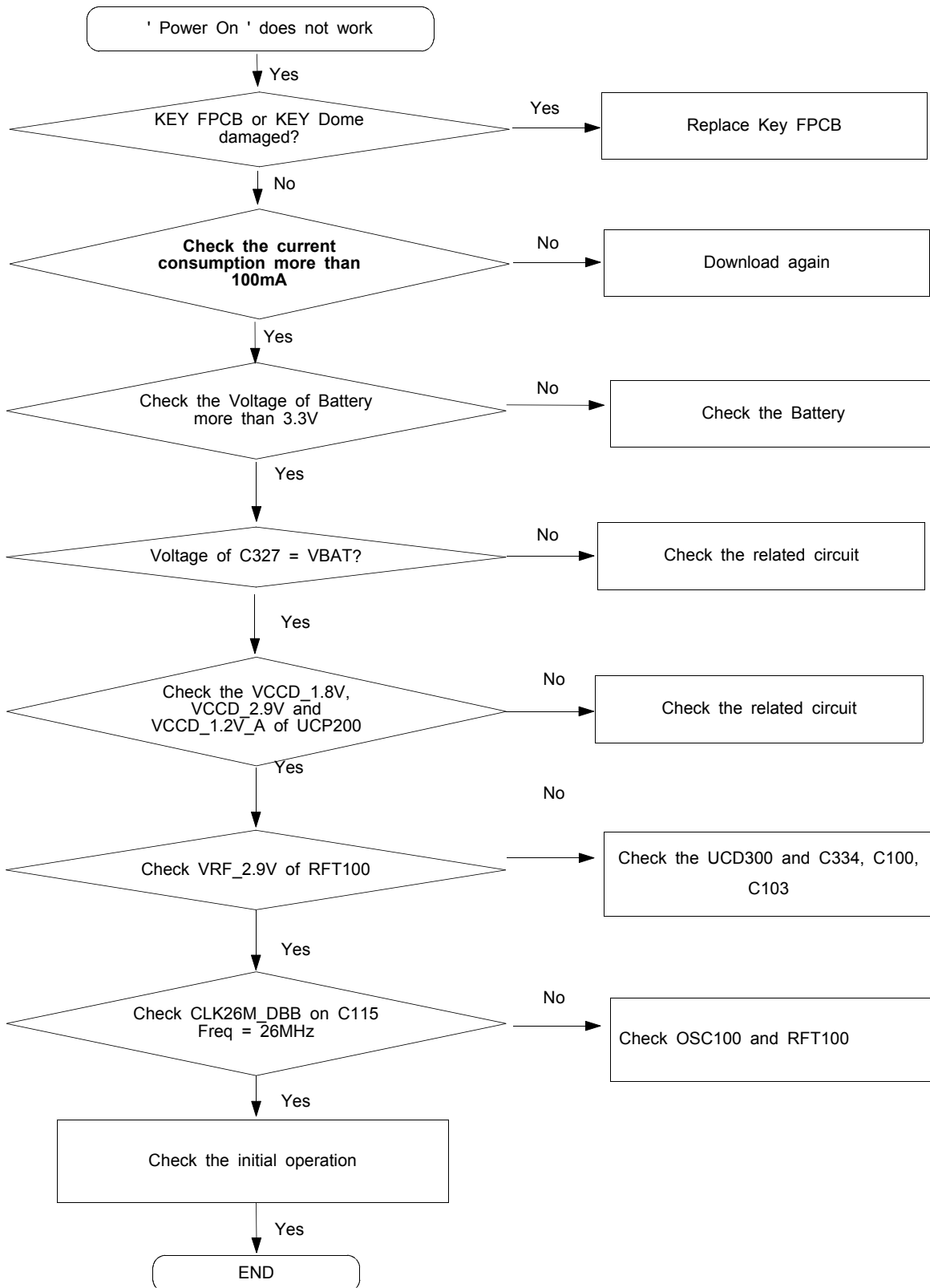
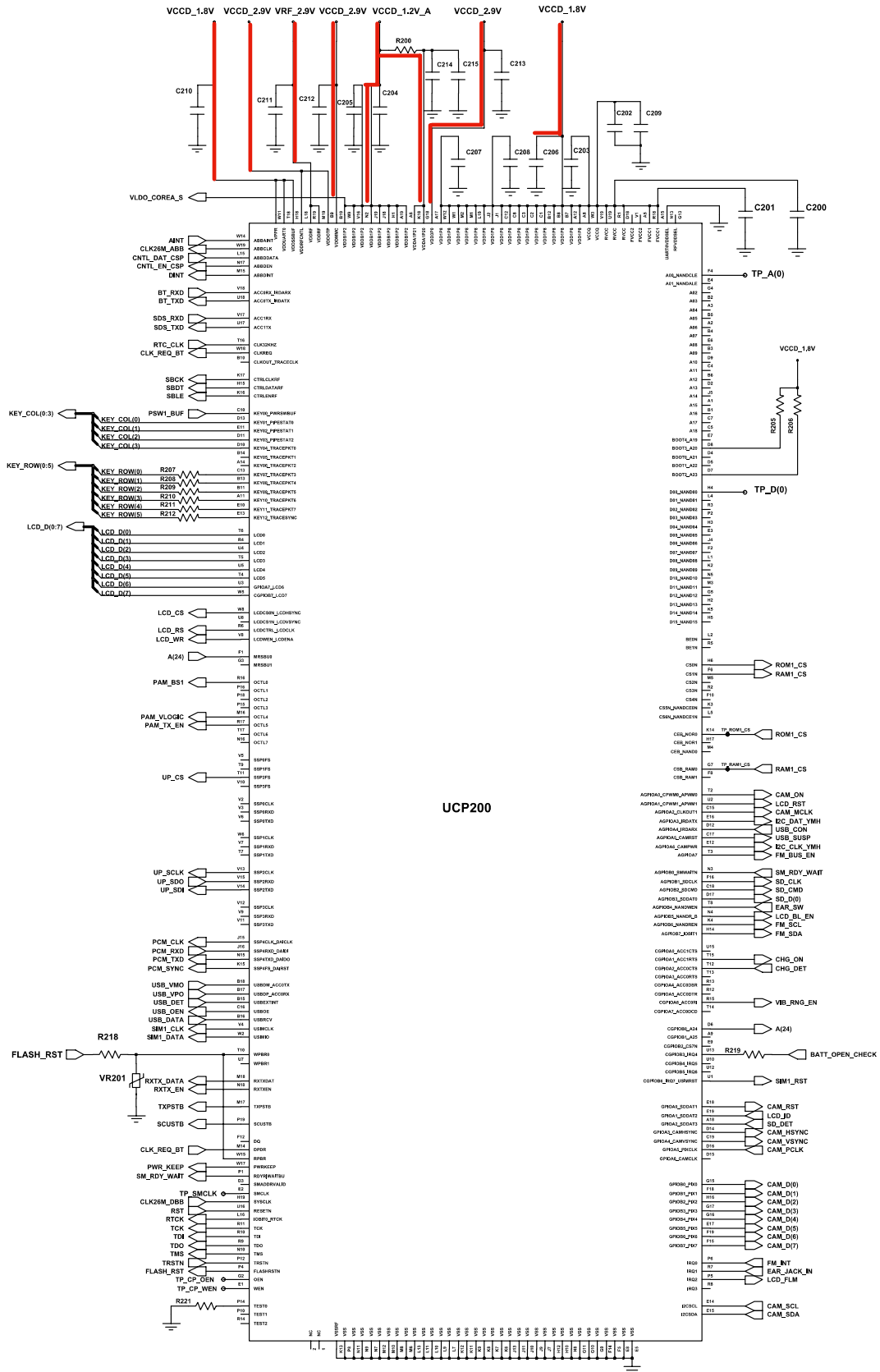
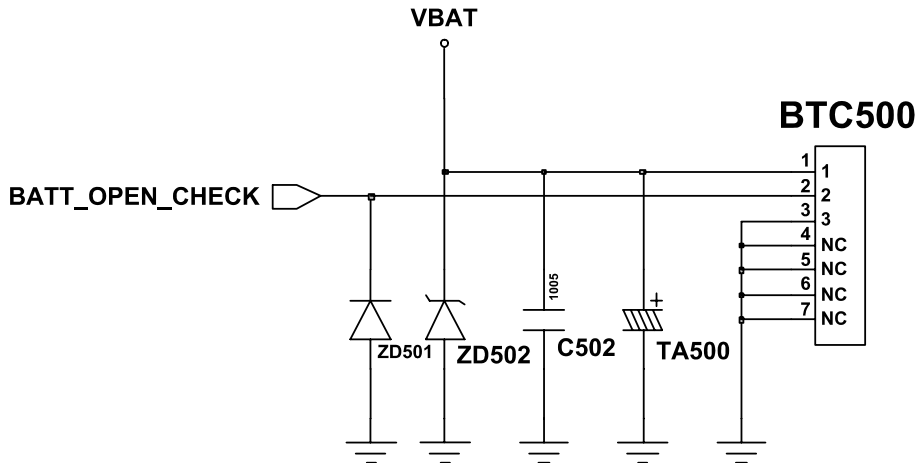
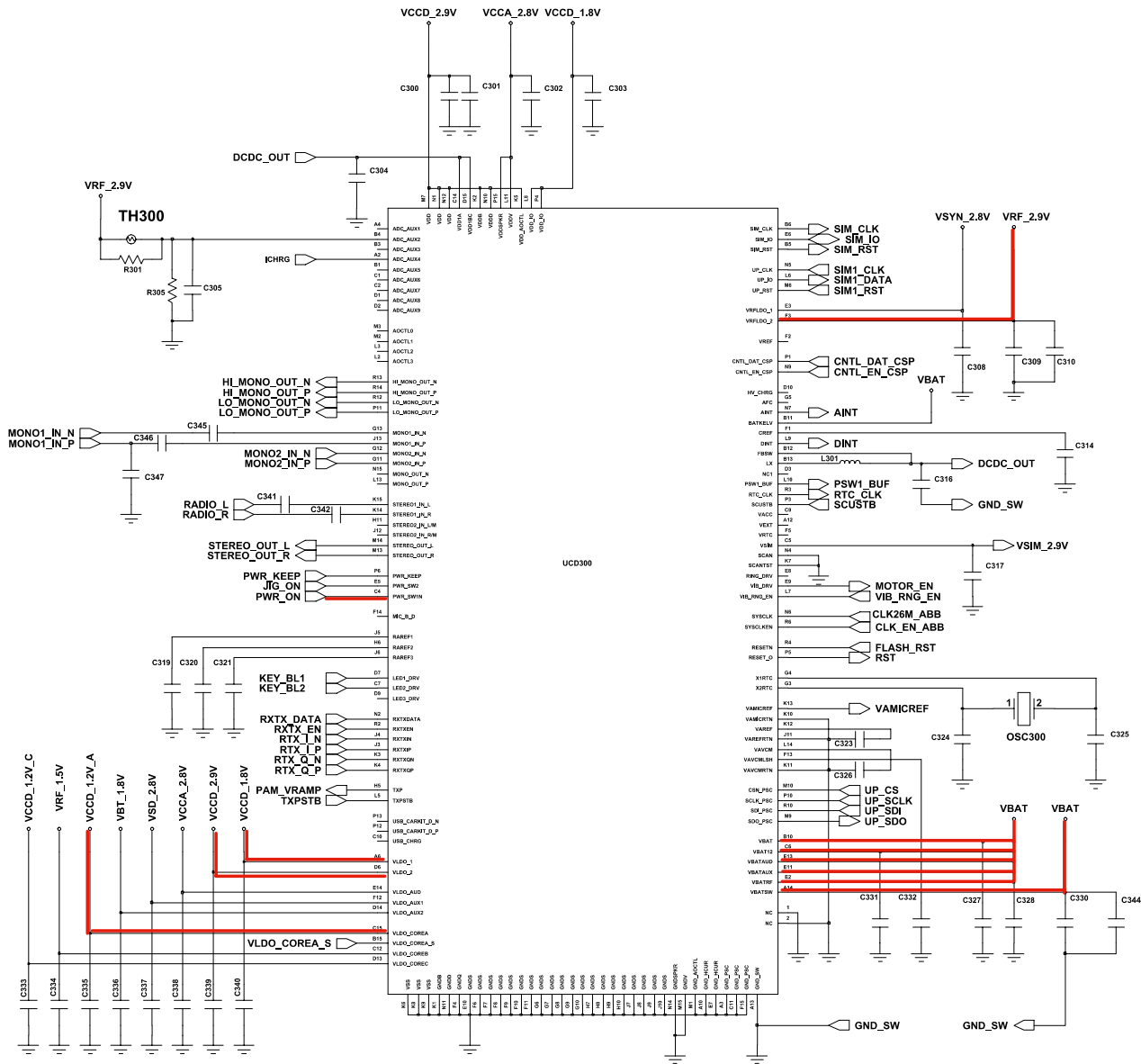


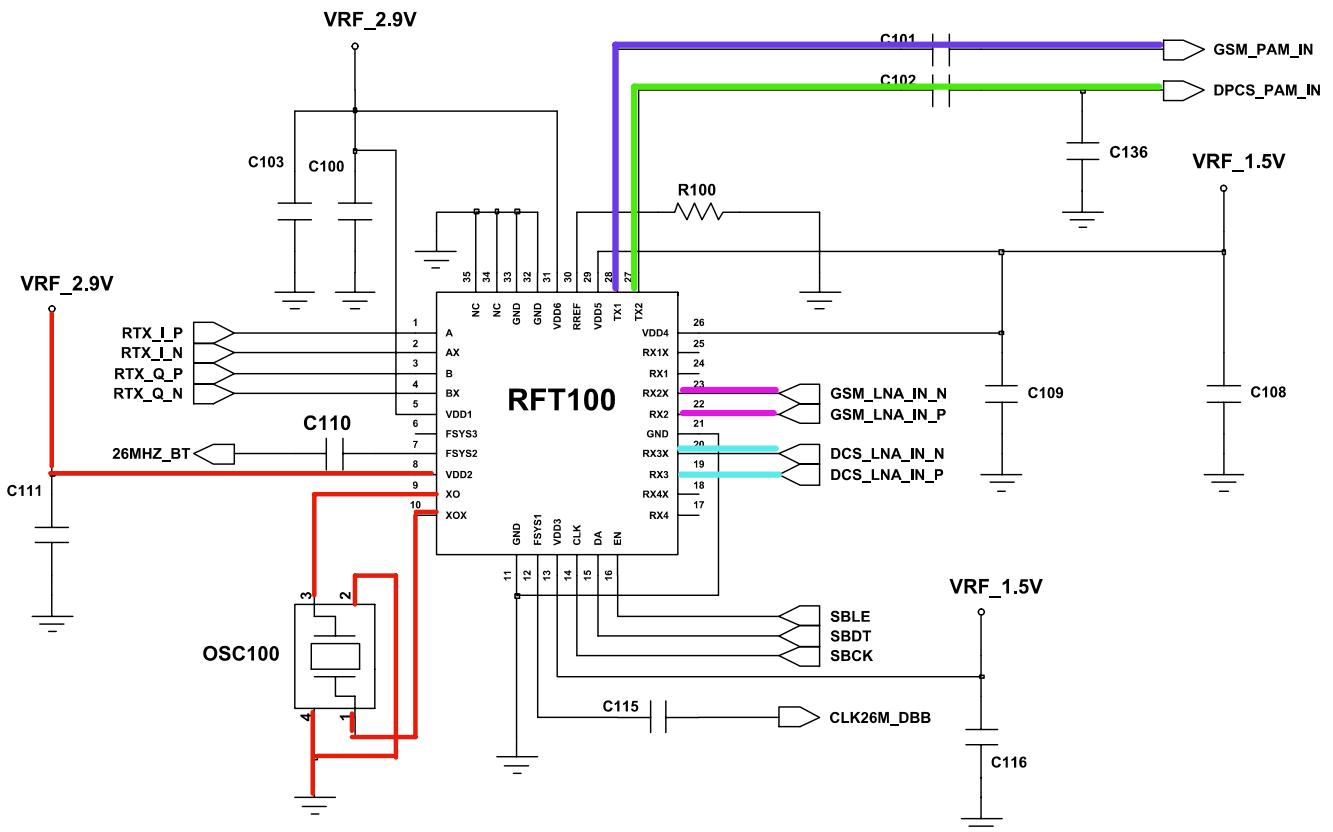
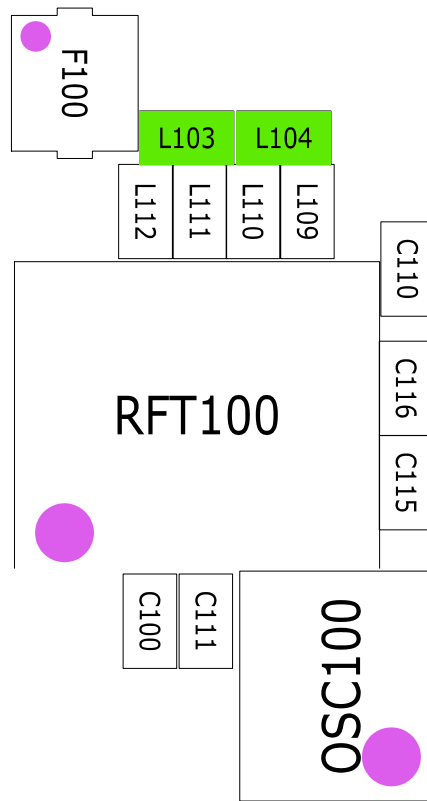
9-1. Power On



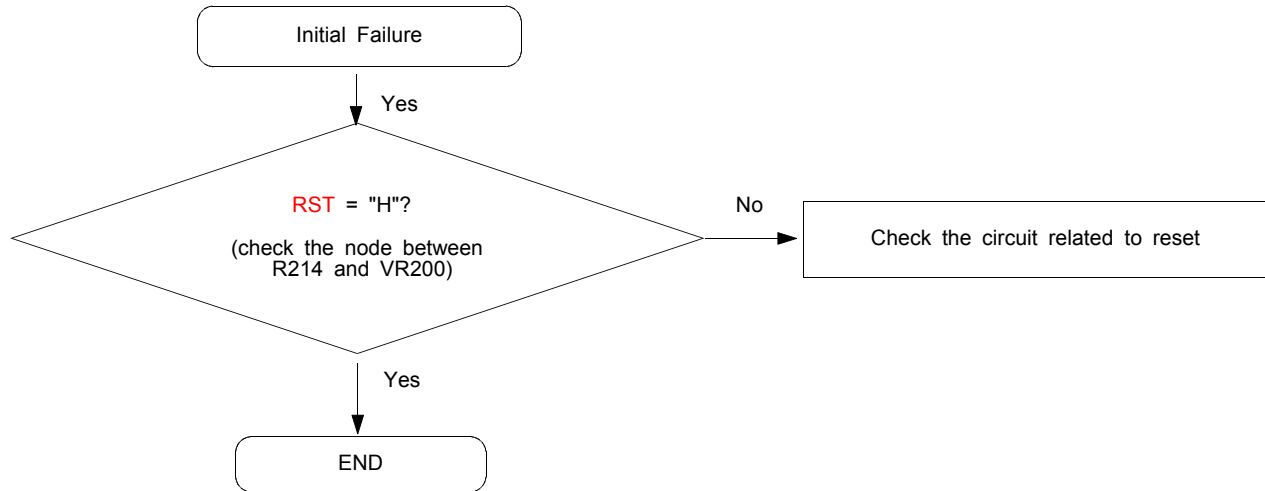
Flow Chart of Troubleshooting



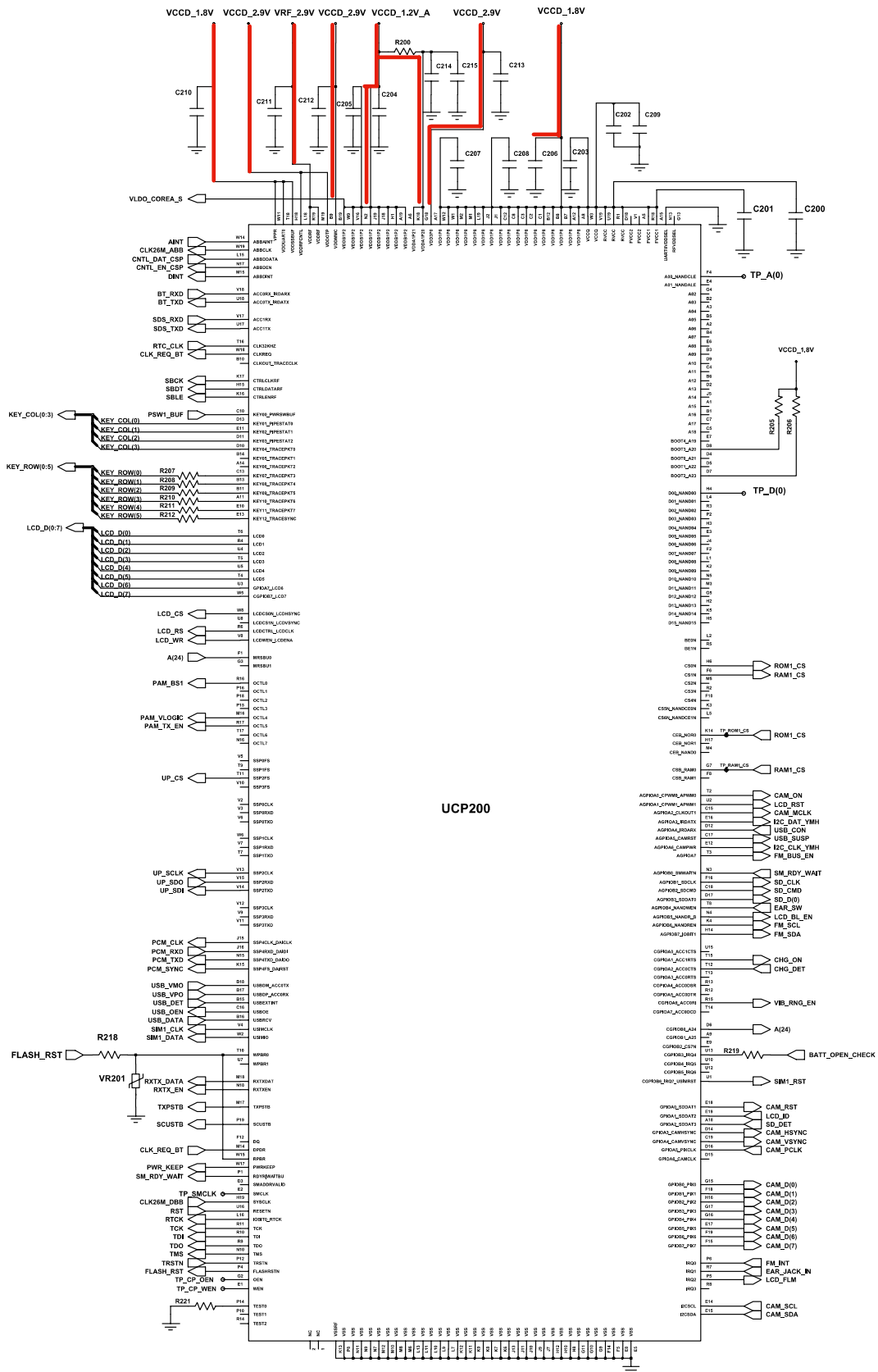


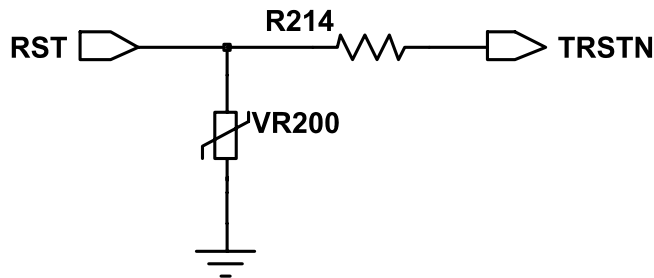
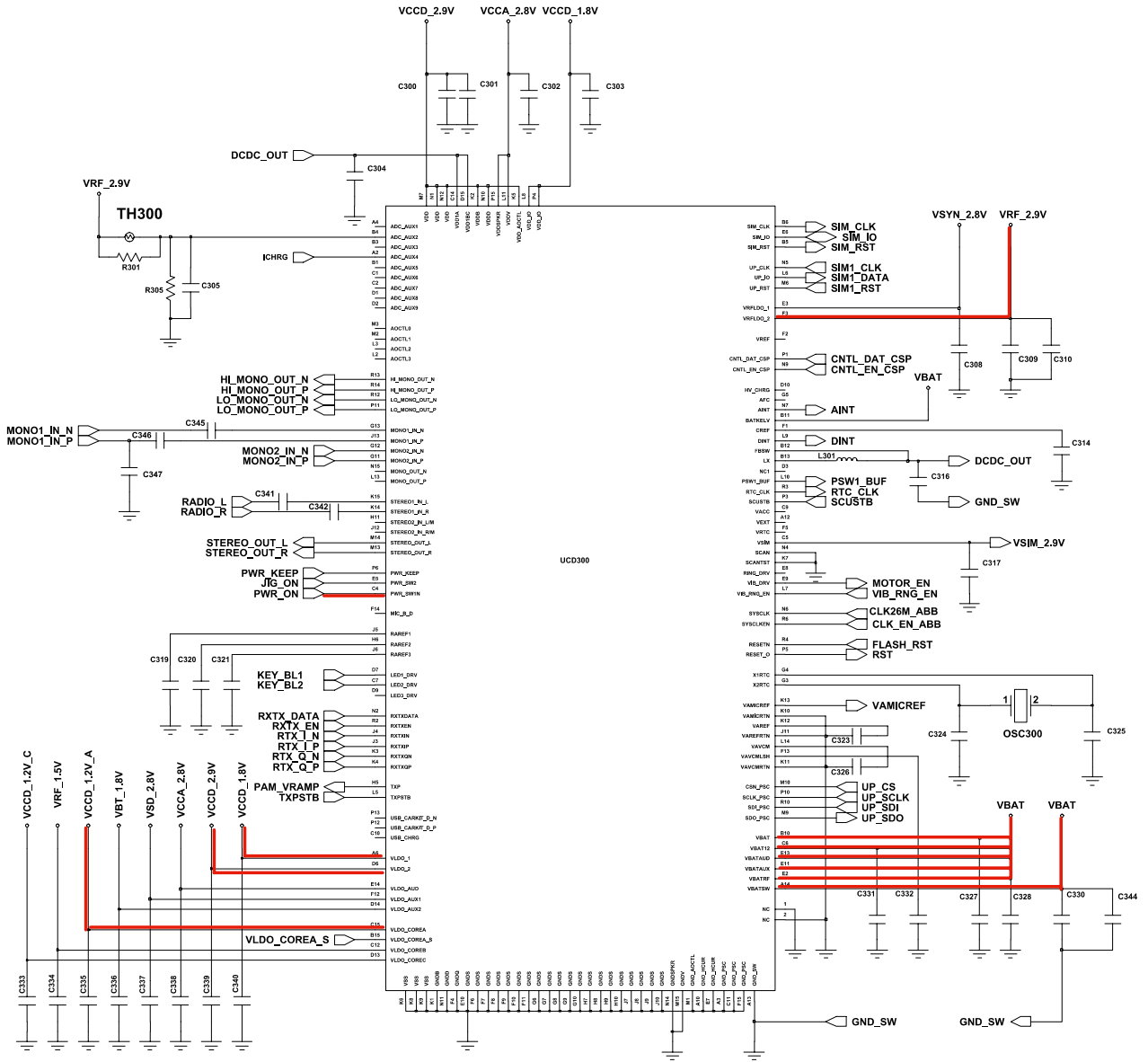


9-2. Initial

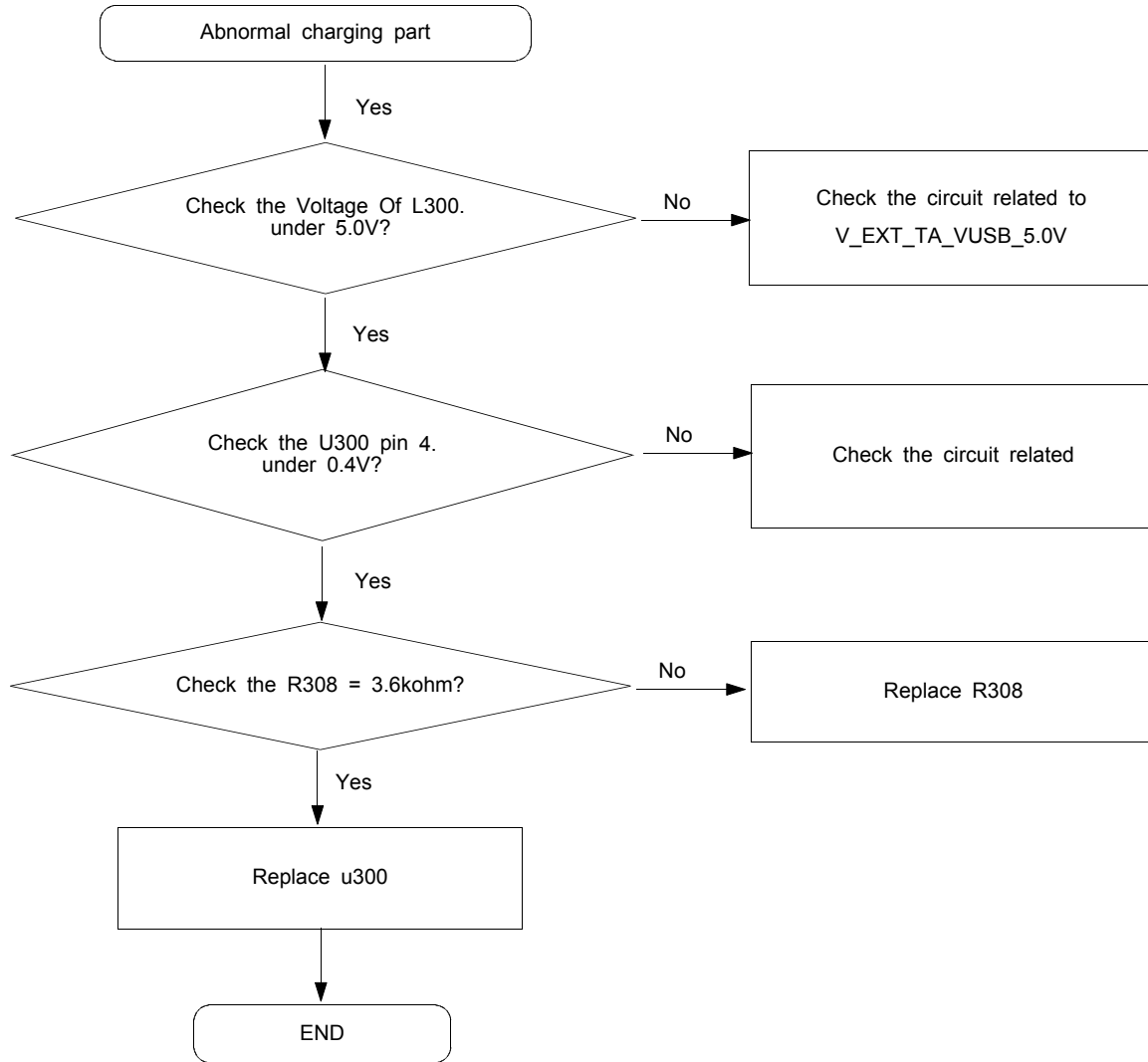


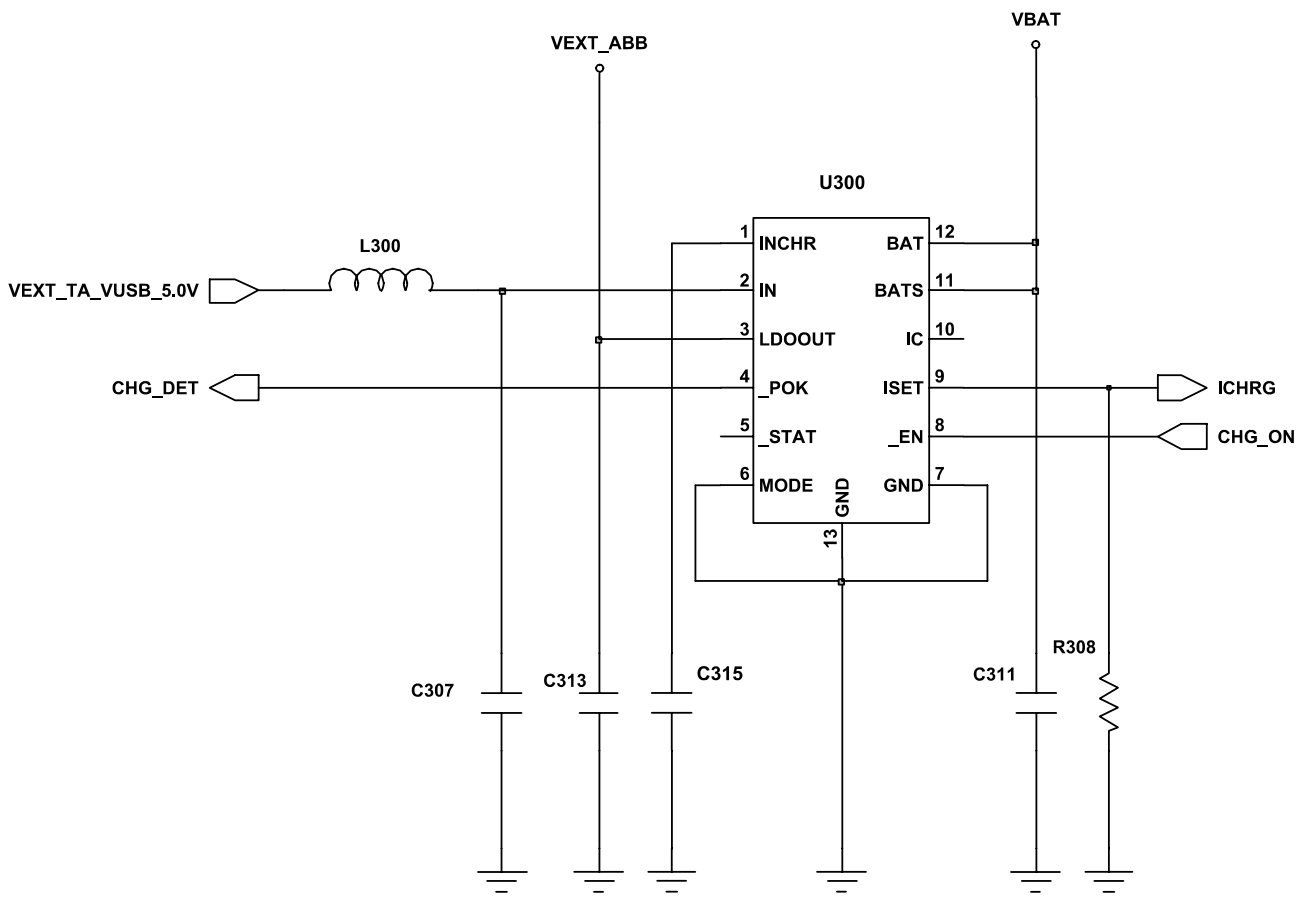
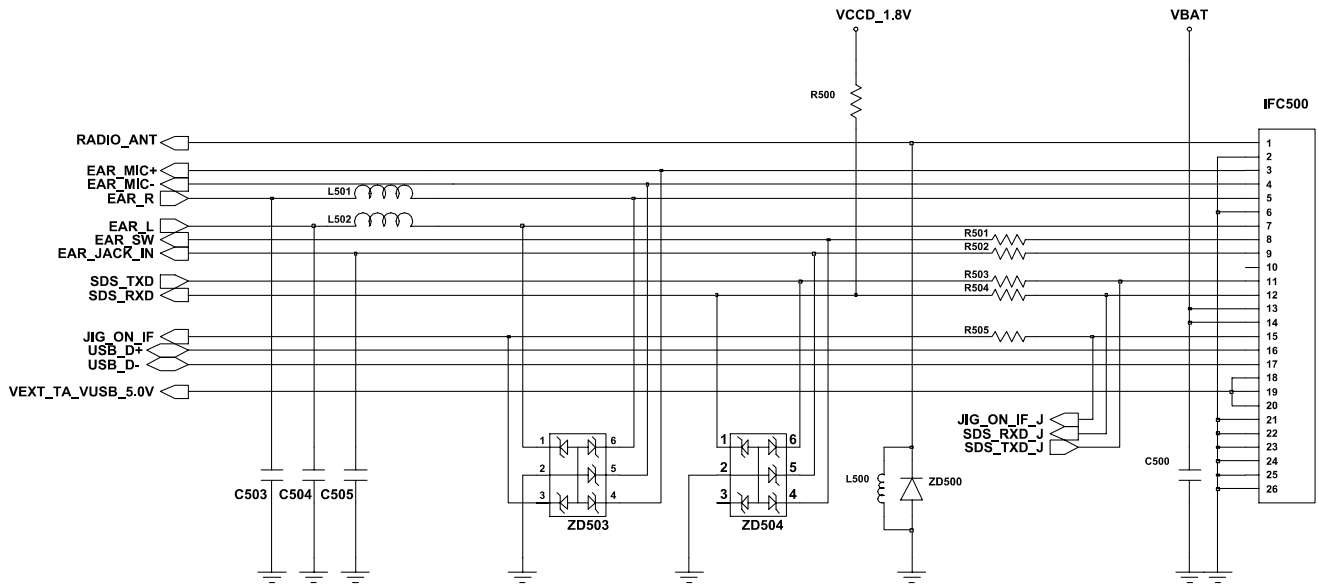
Flow Chart of Troubleshooting



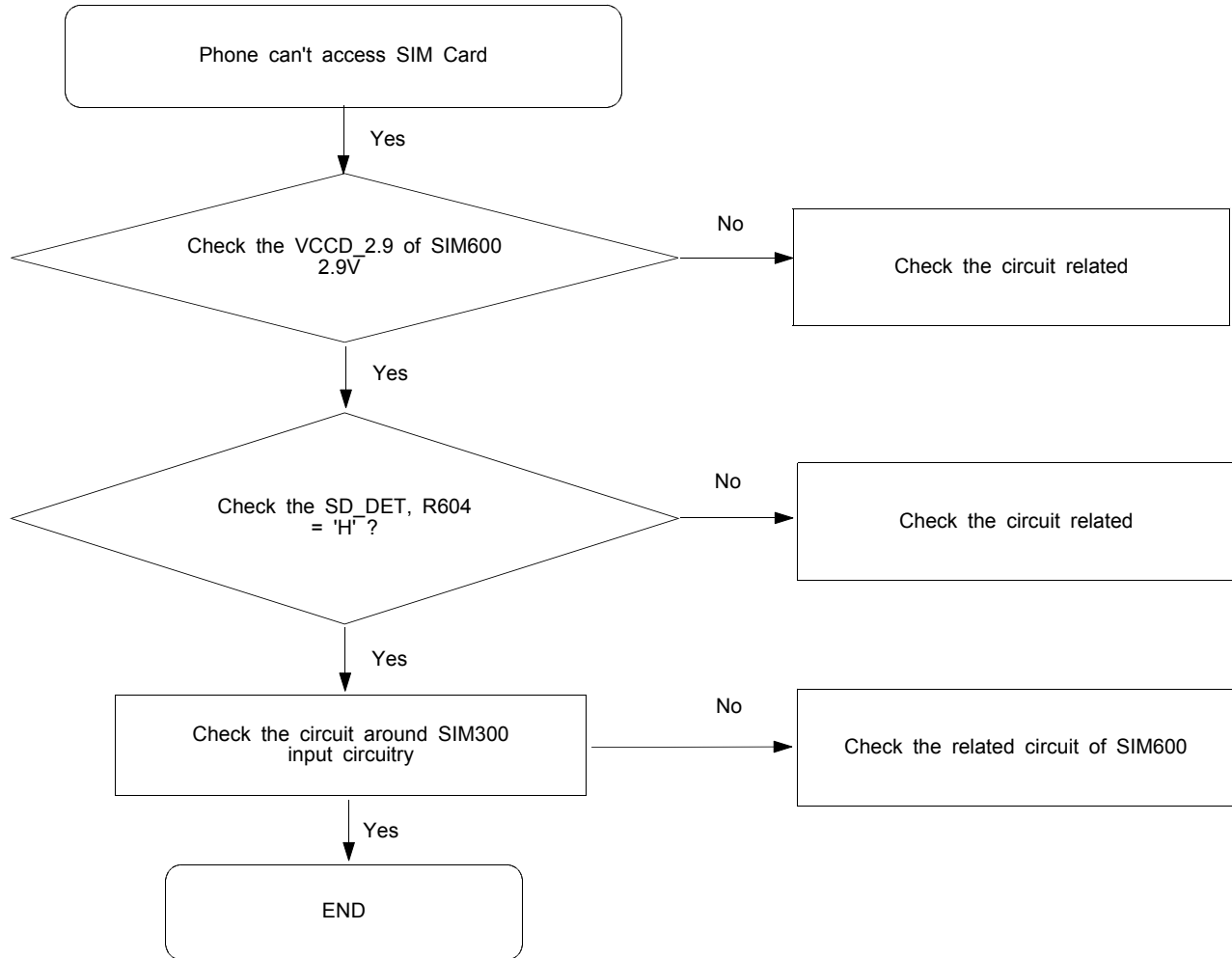


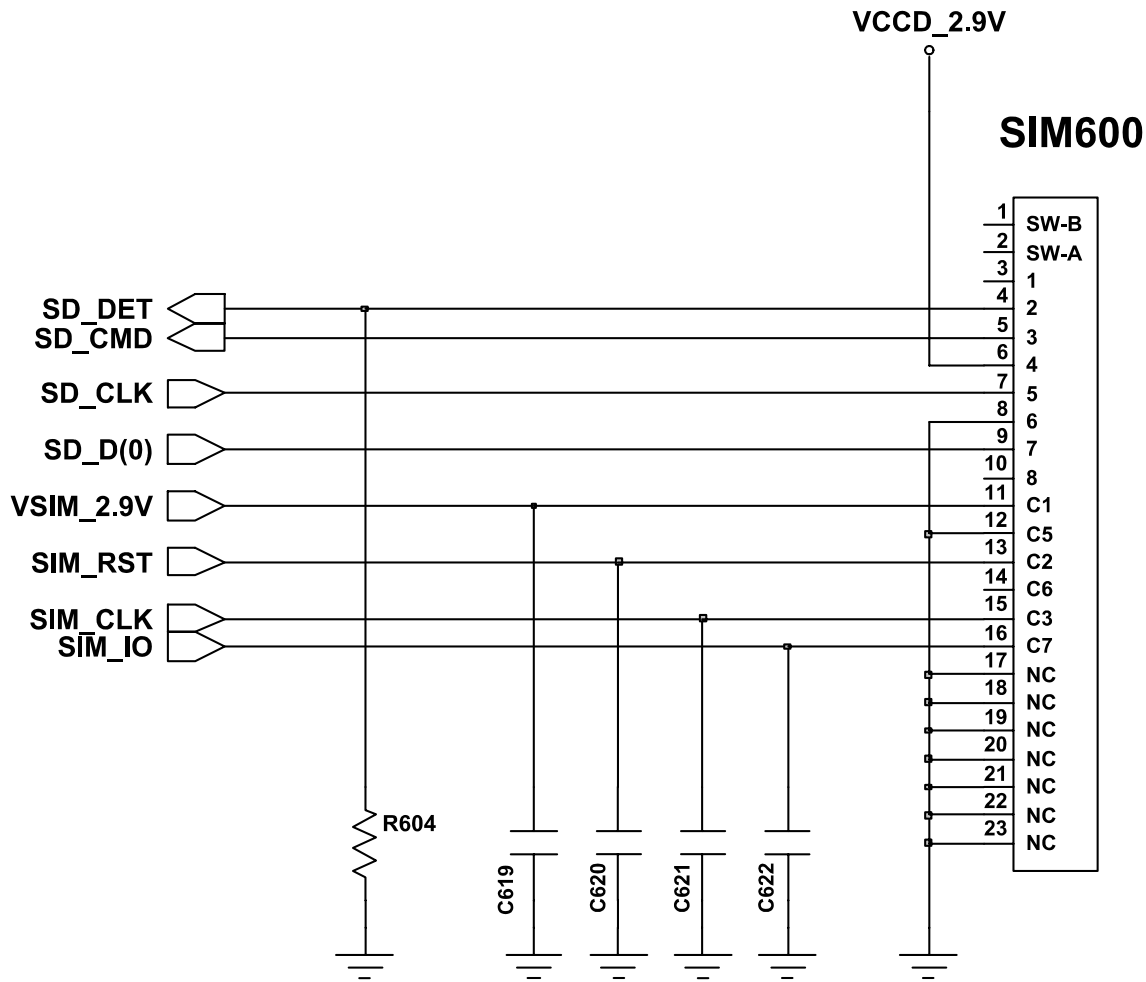
9-3. Charging Part



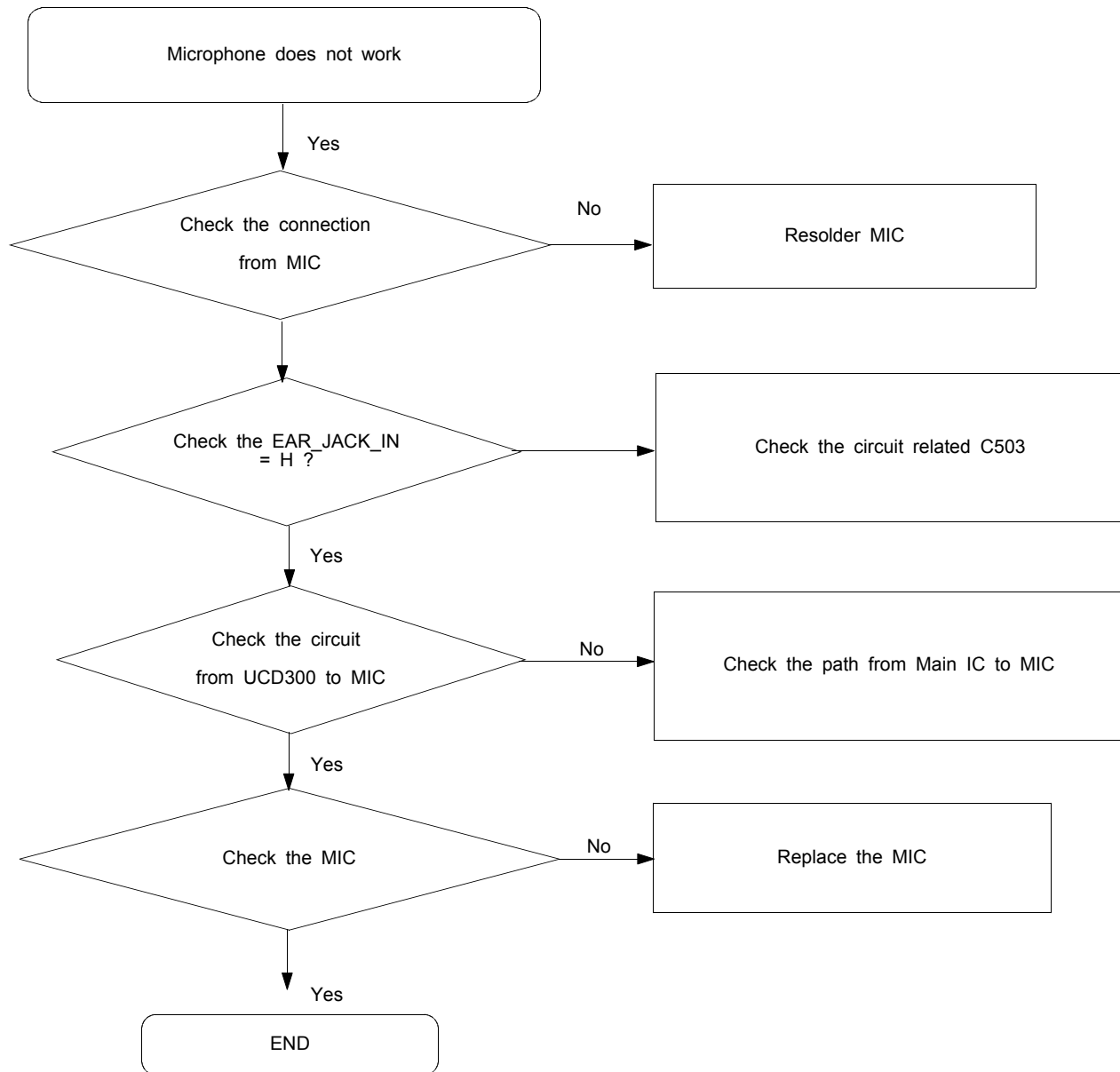


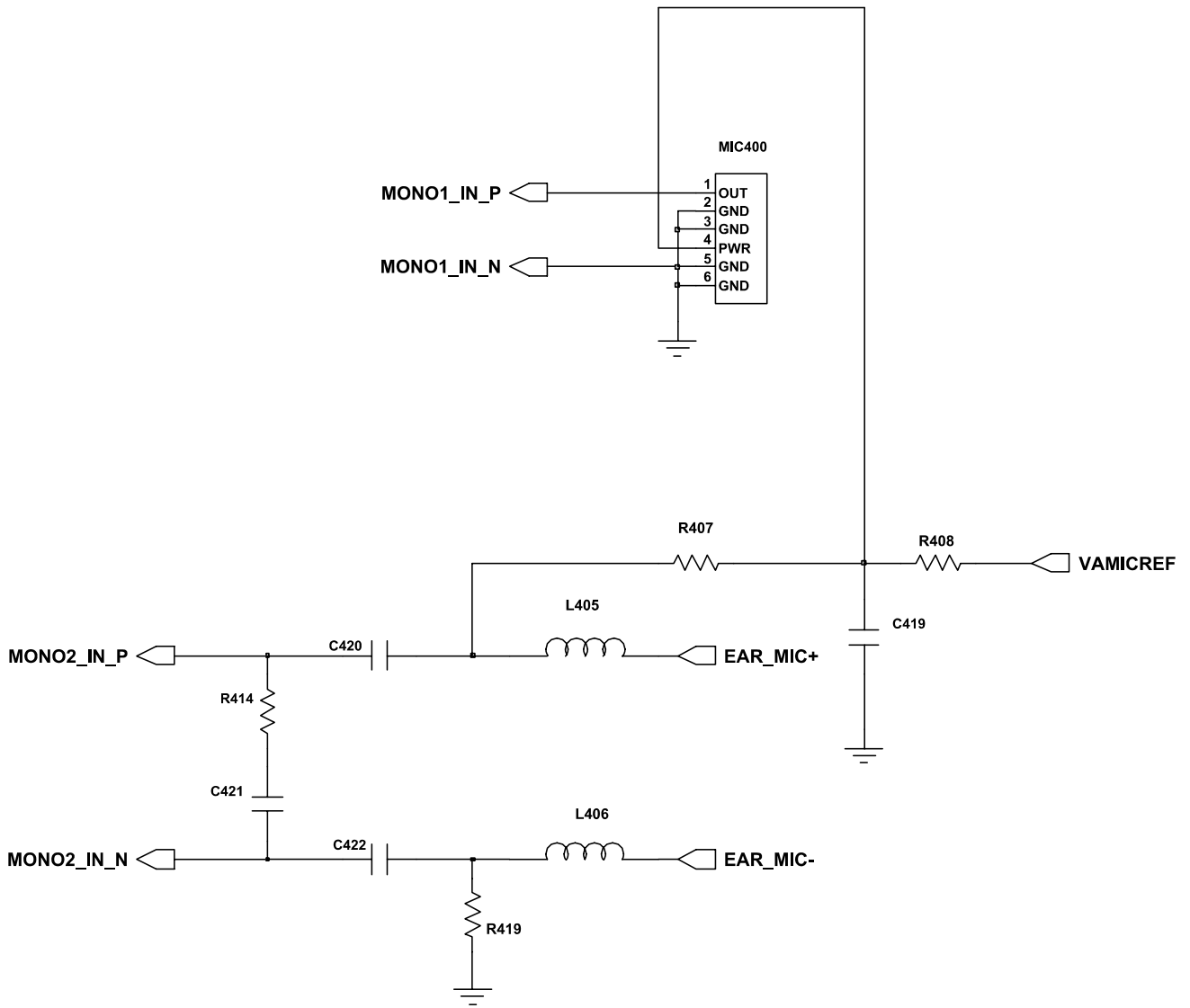
9-4. Sim Part



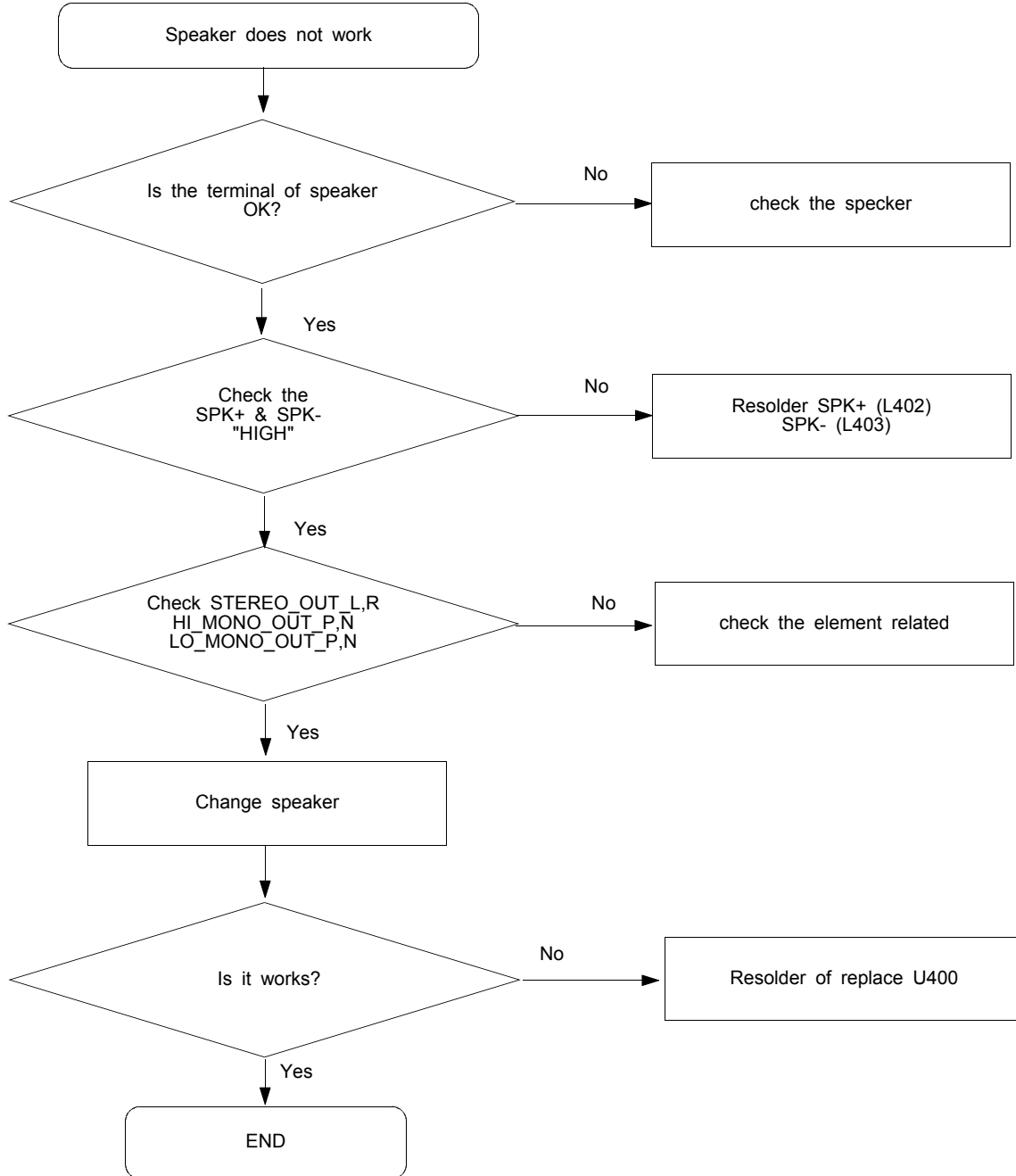


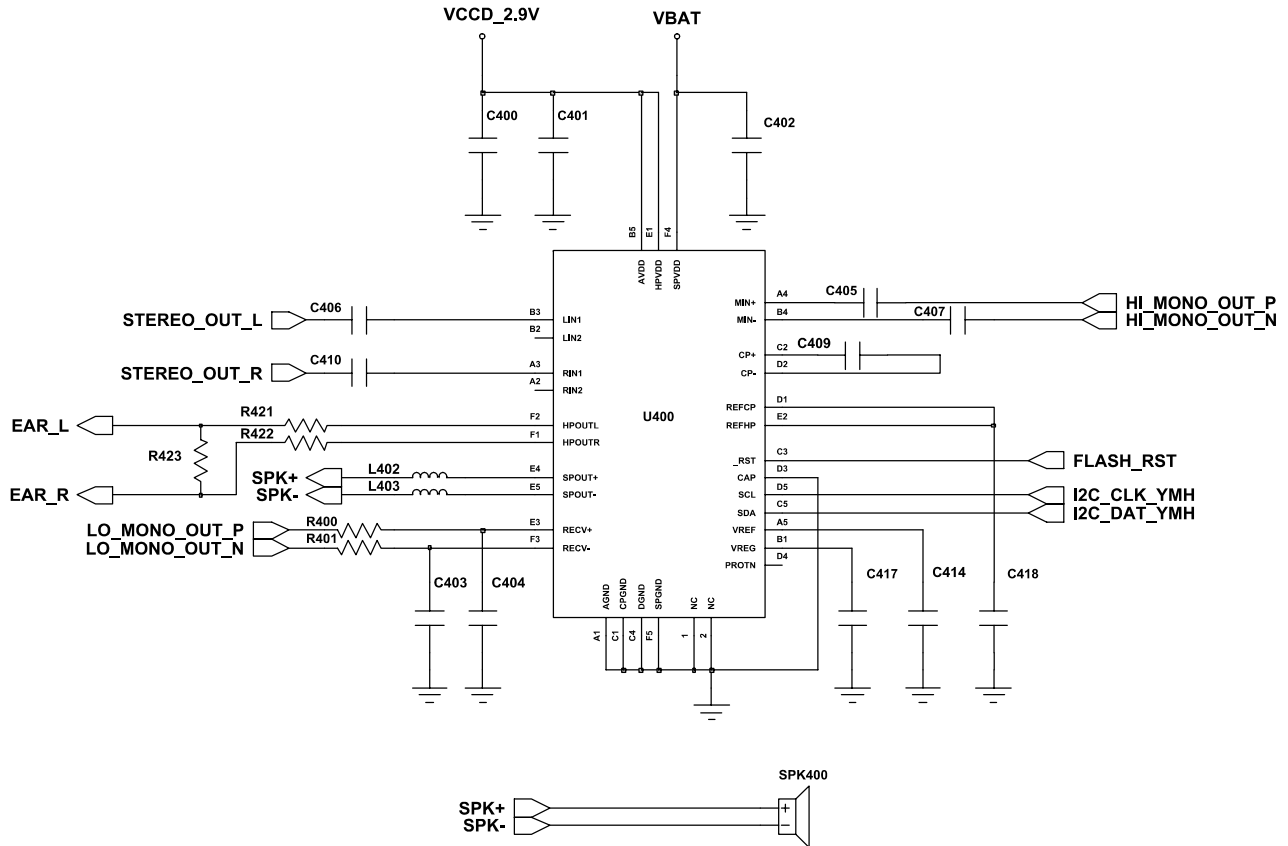
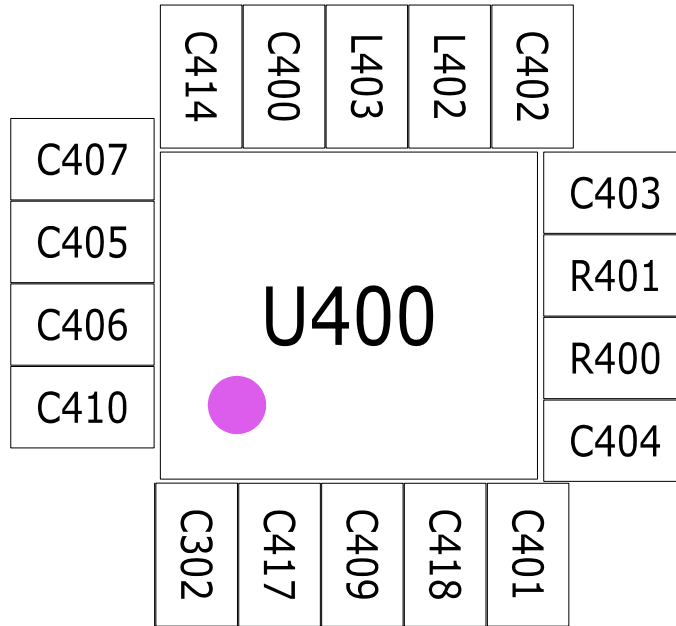
9-5. Microphone Part



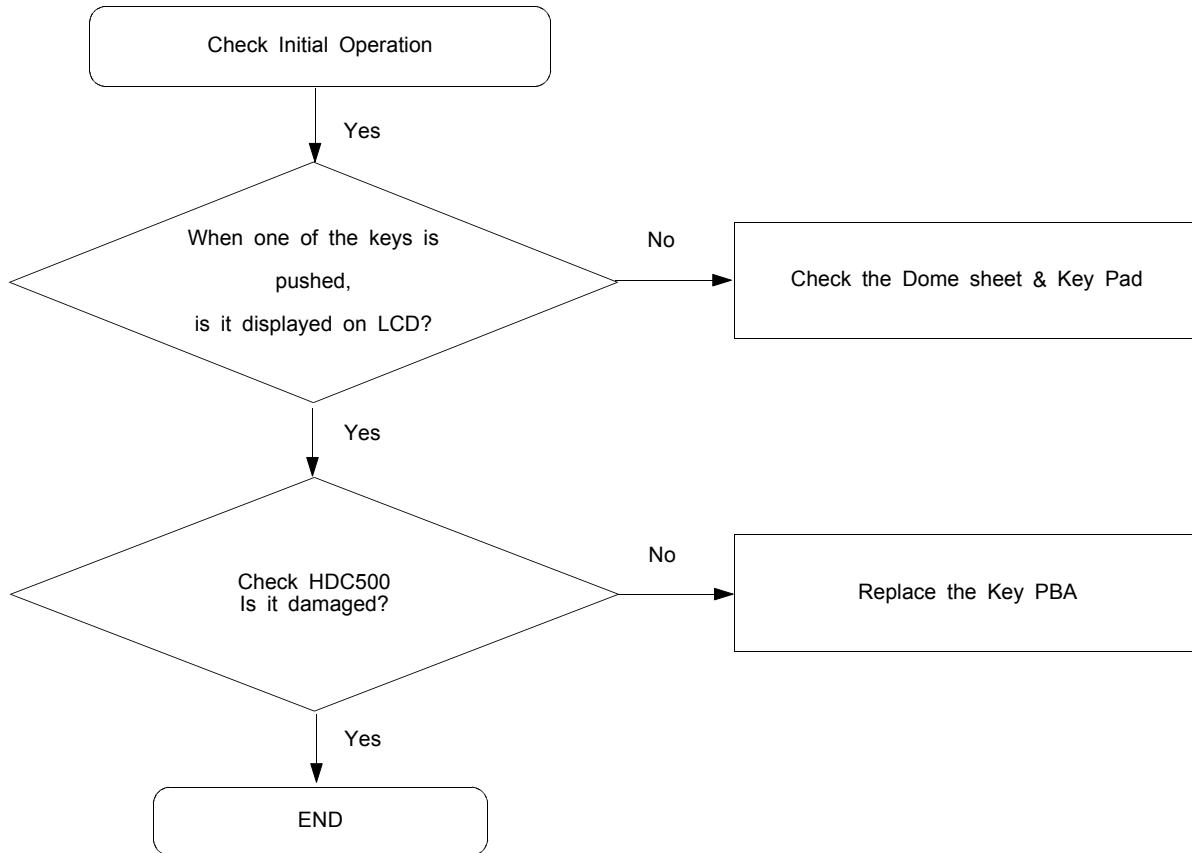


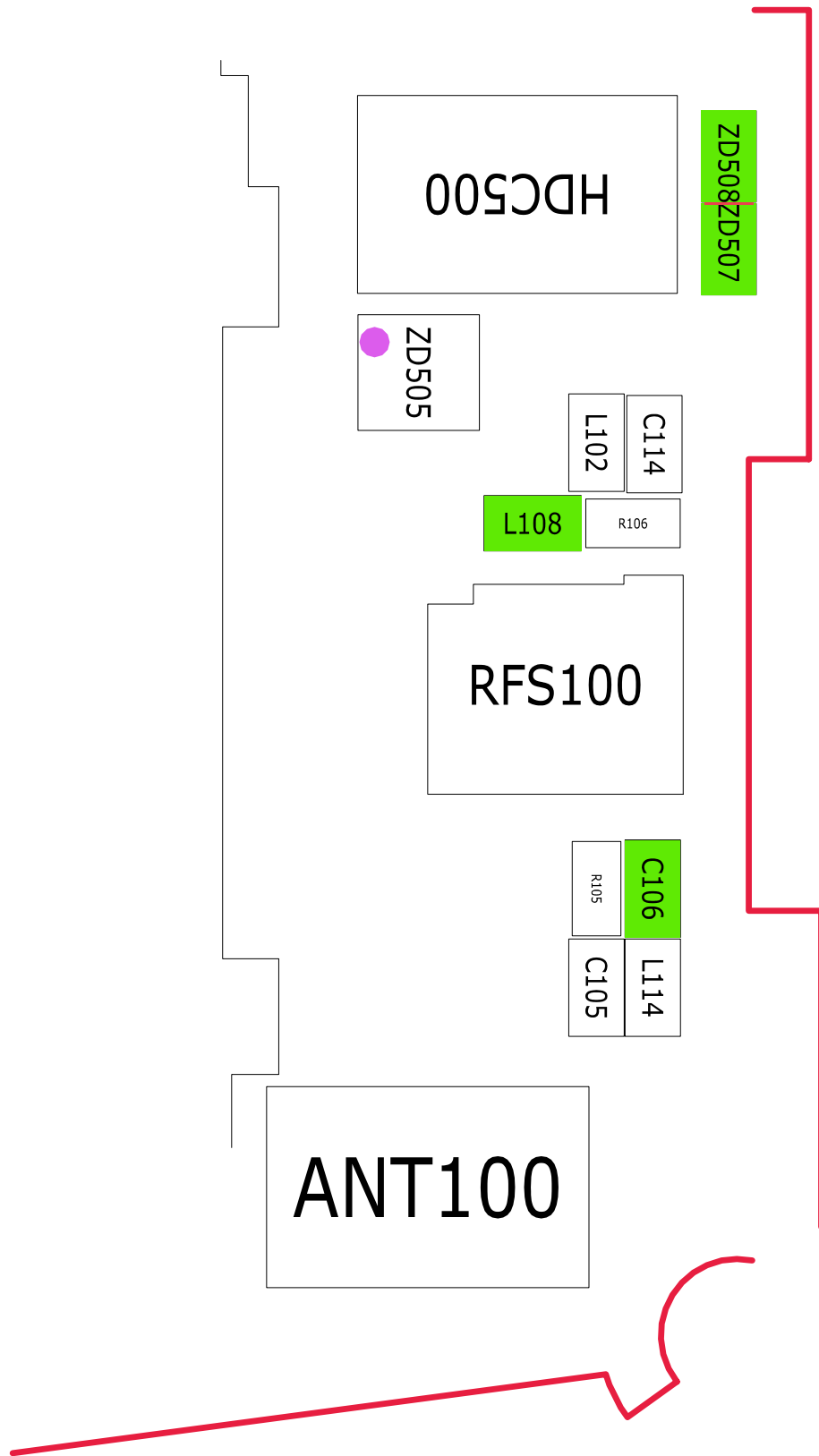
9-6. Speaker Part(Melody)



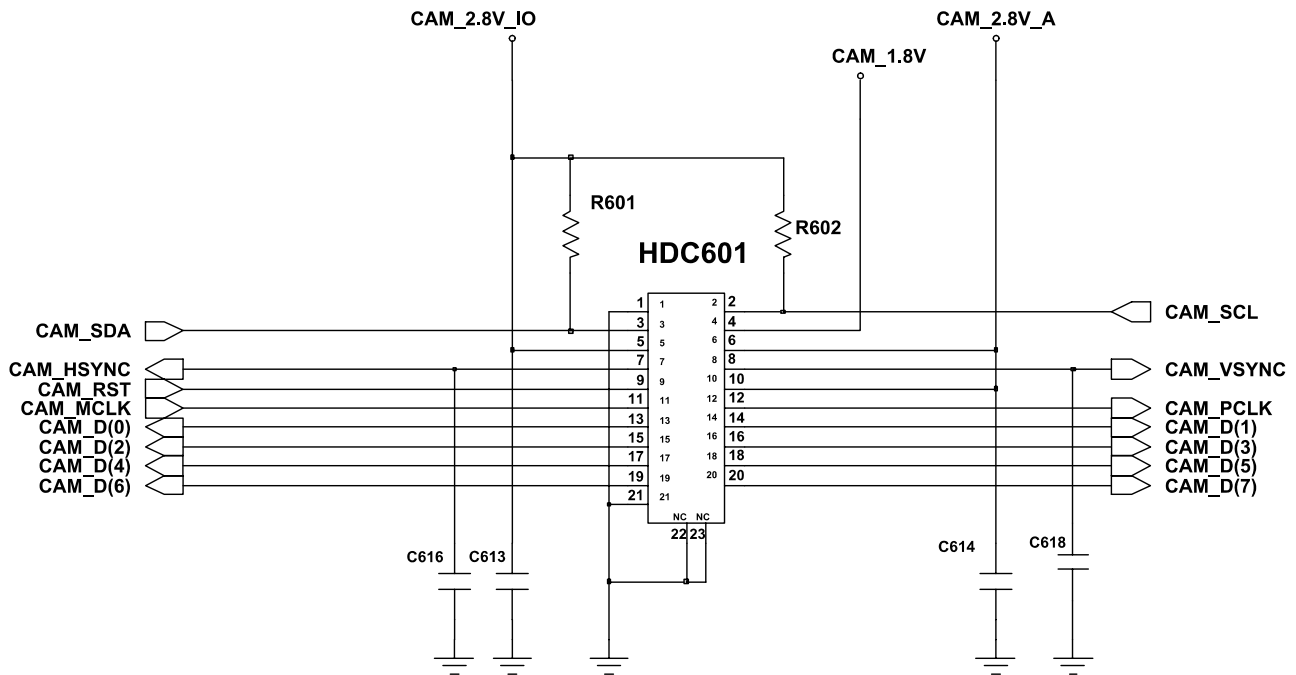
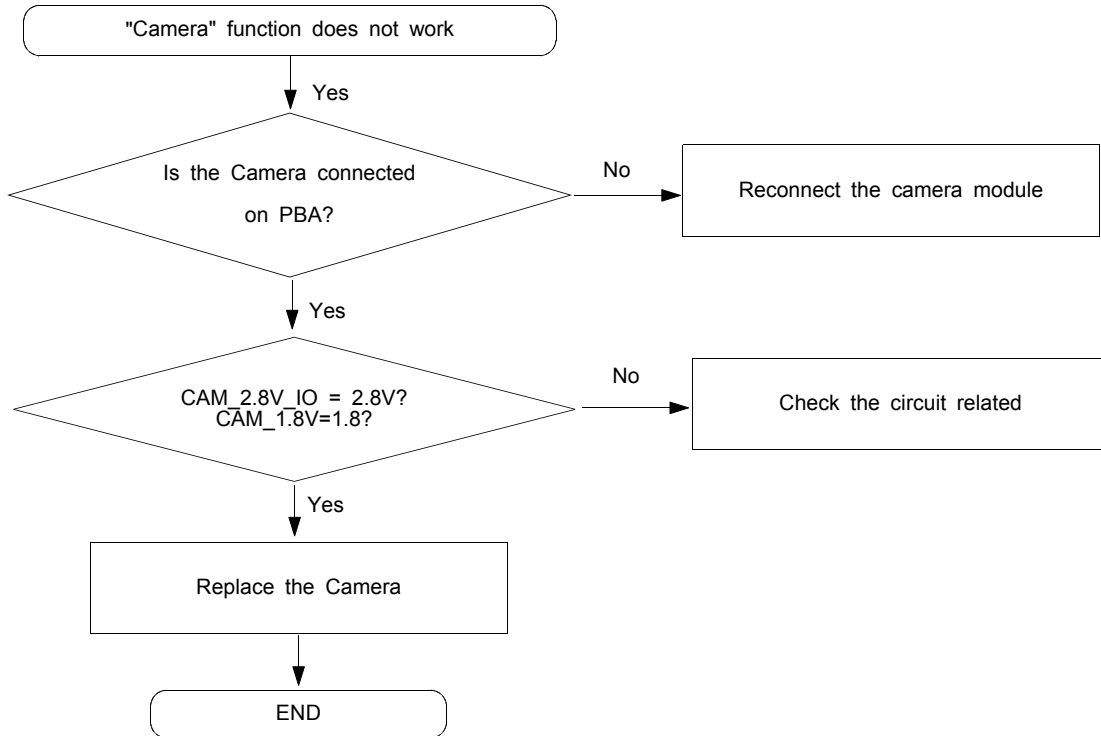


9-7. Key Data Input

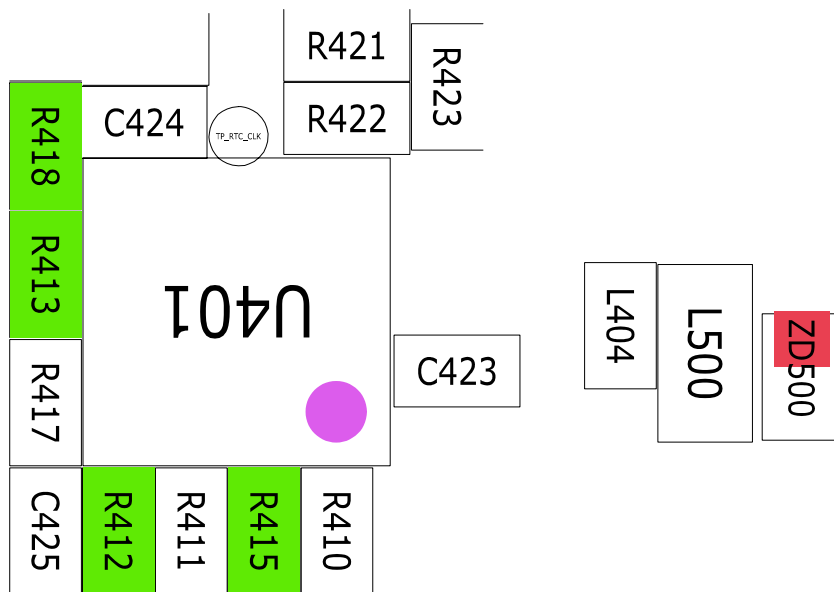
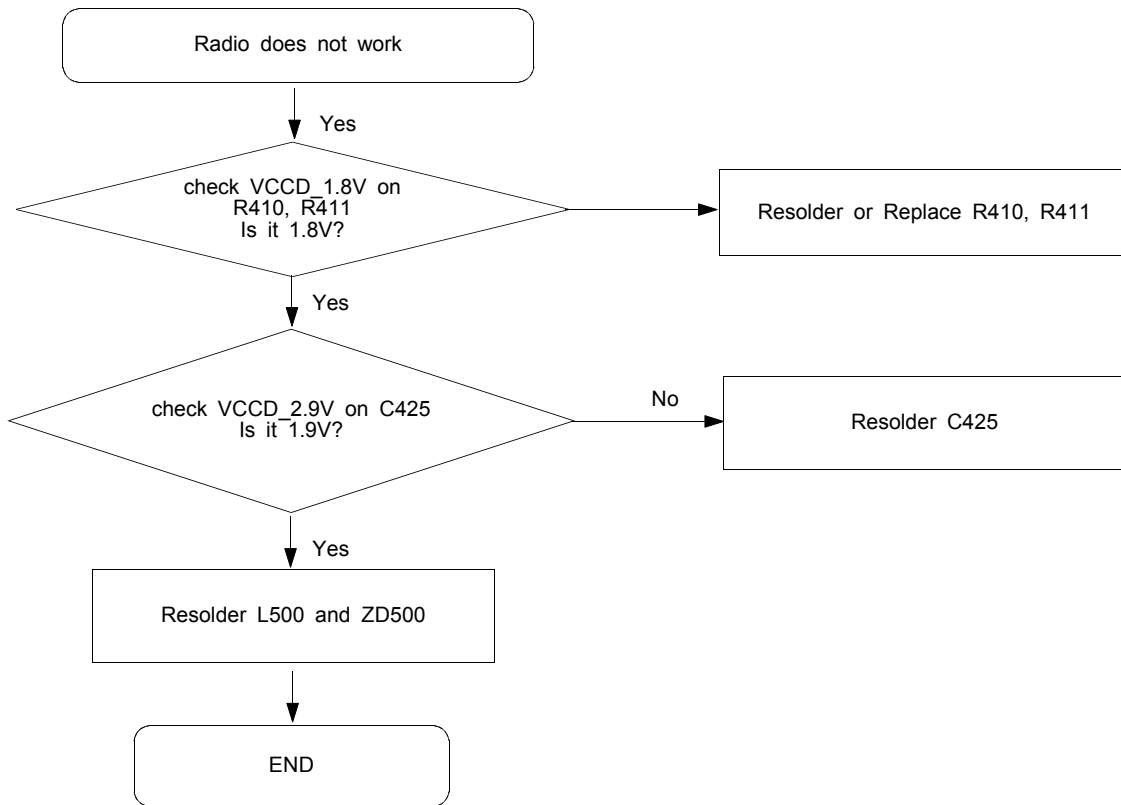




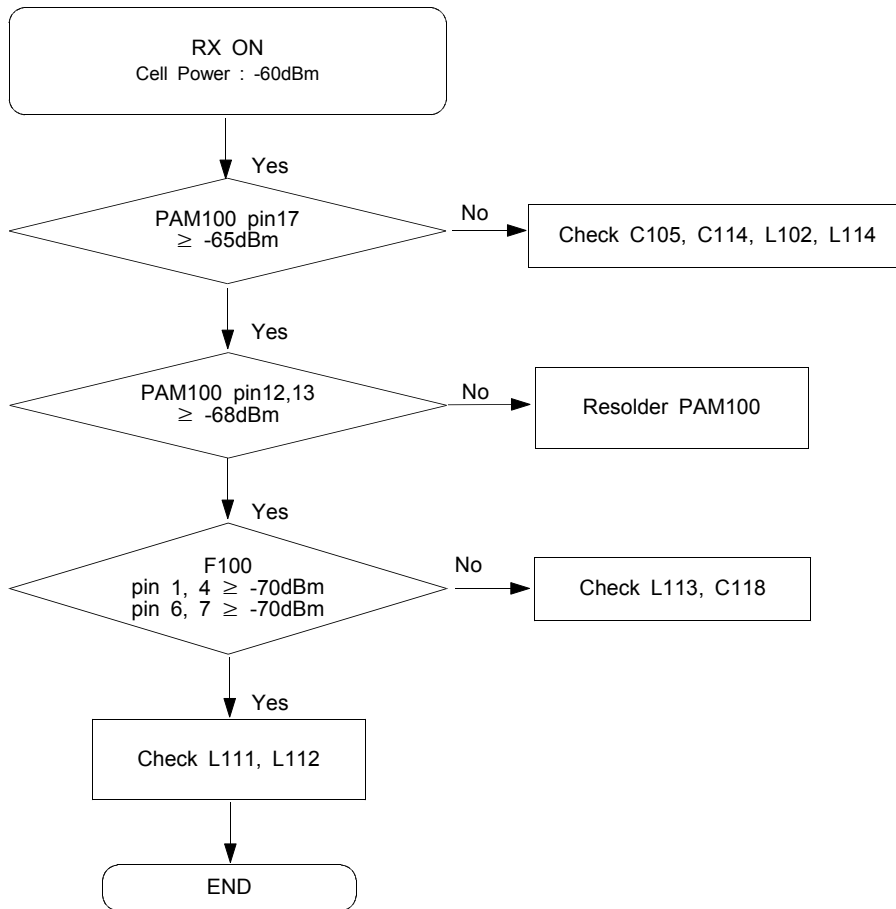
9-8. Camera part

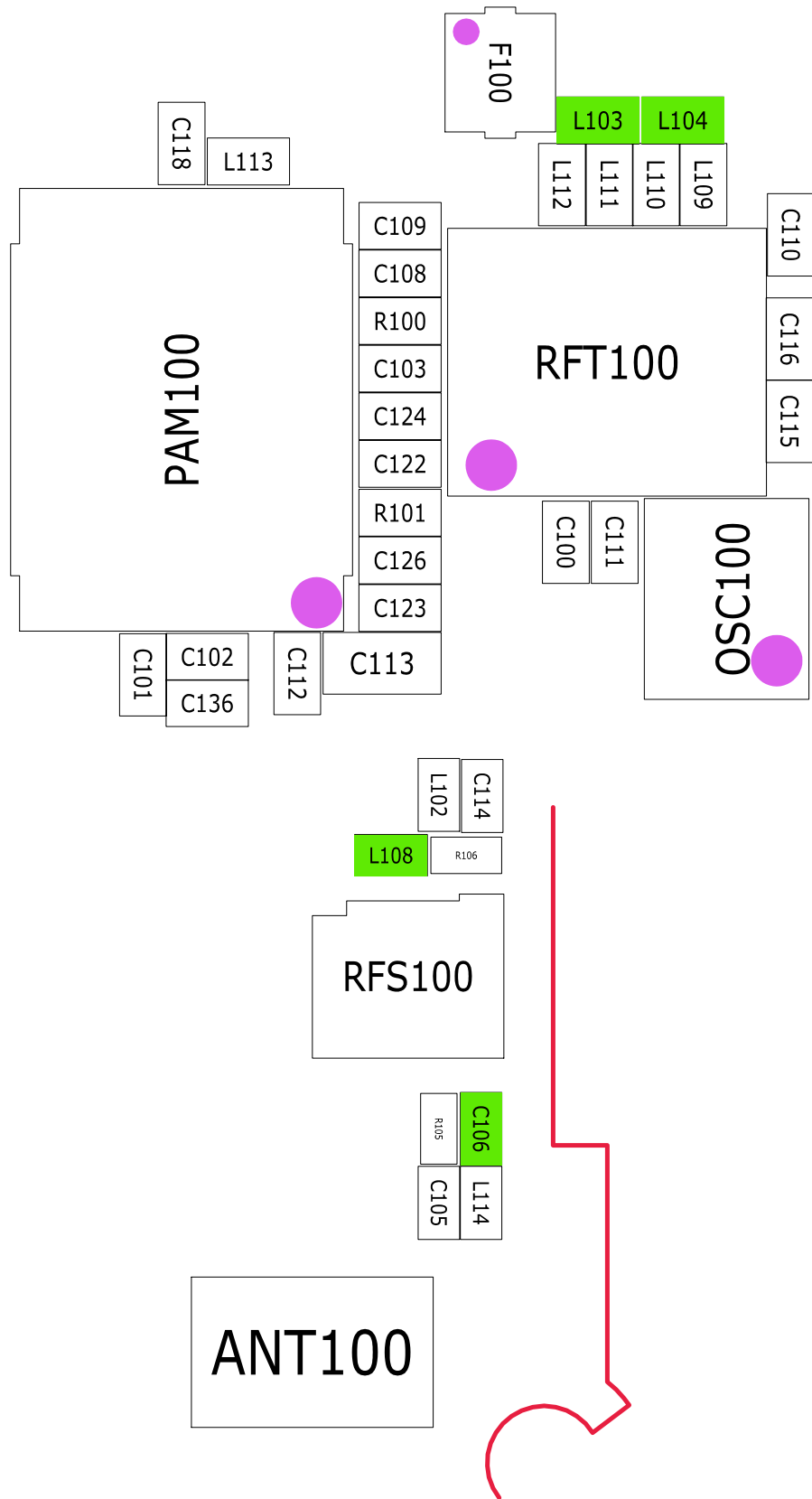


9-9. Radio part

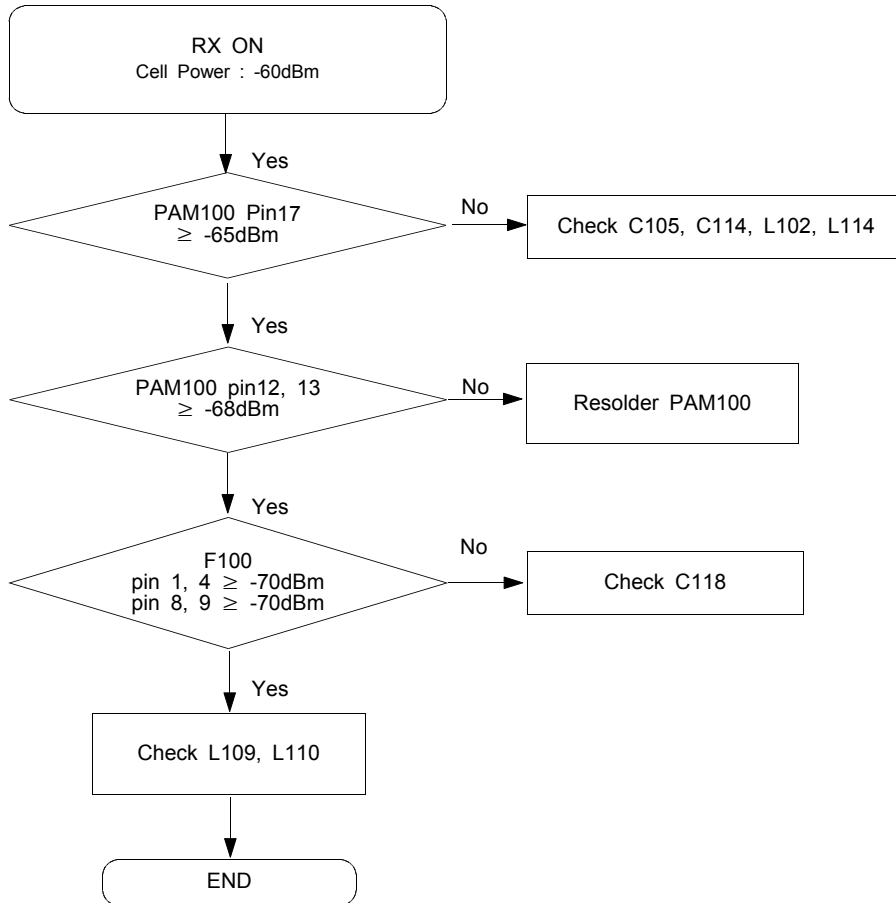


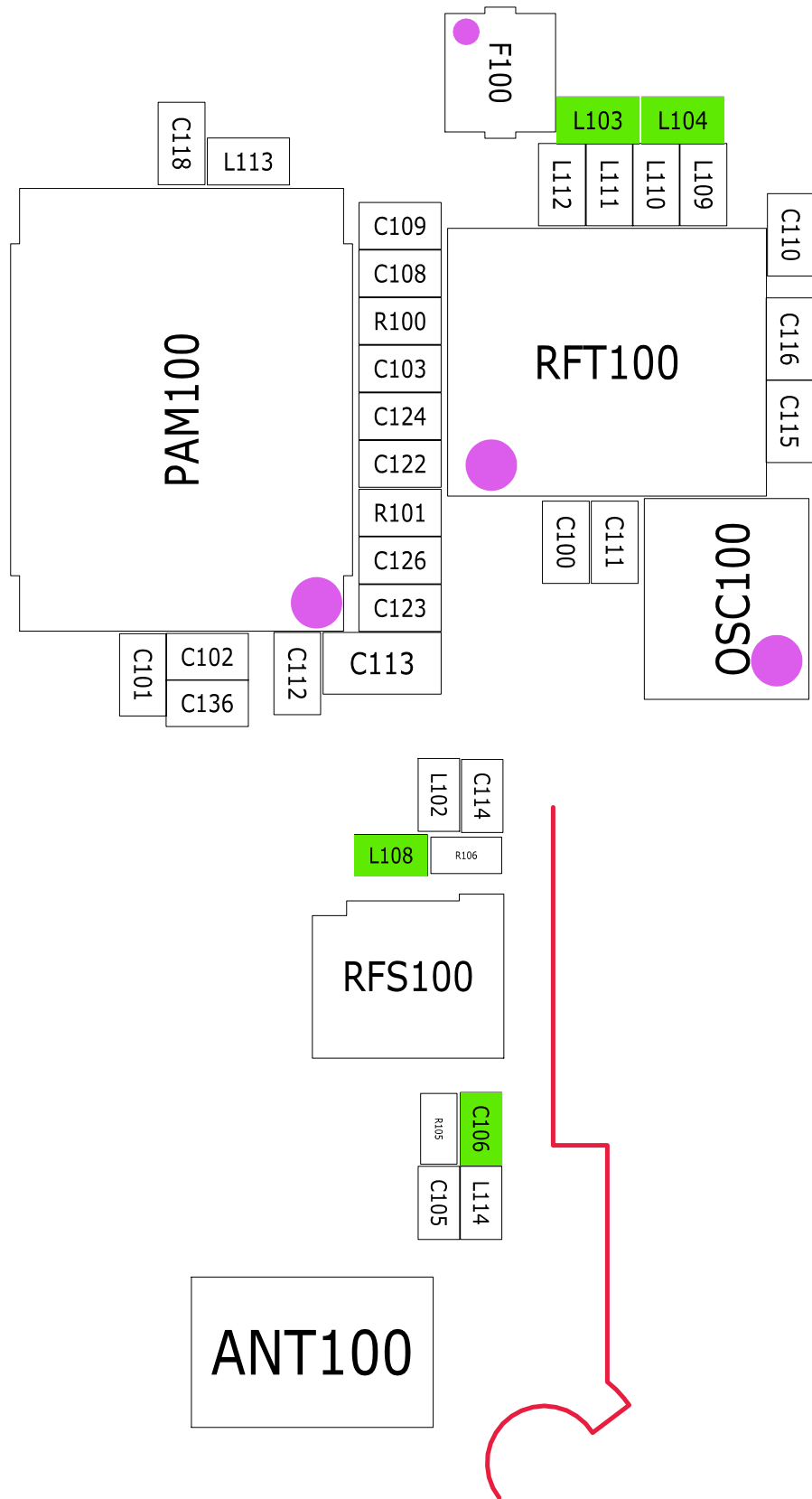
9-10. GSM Receiver



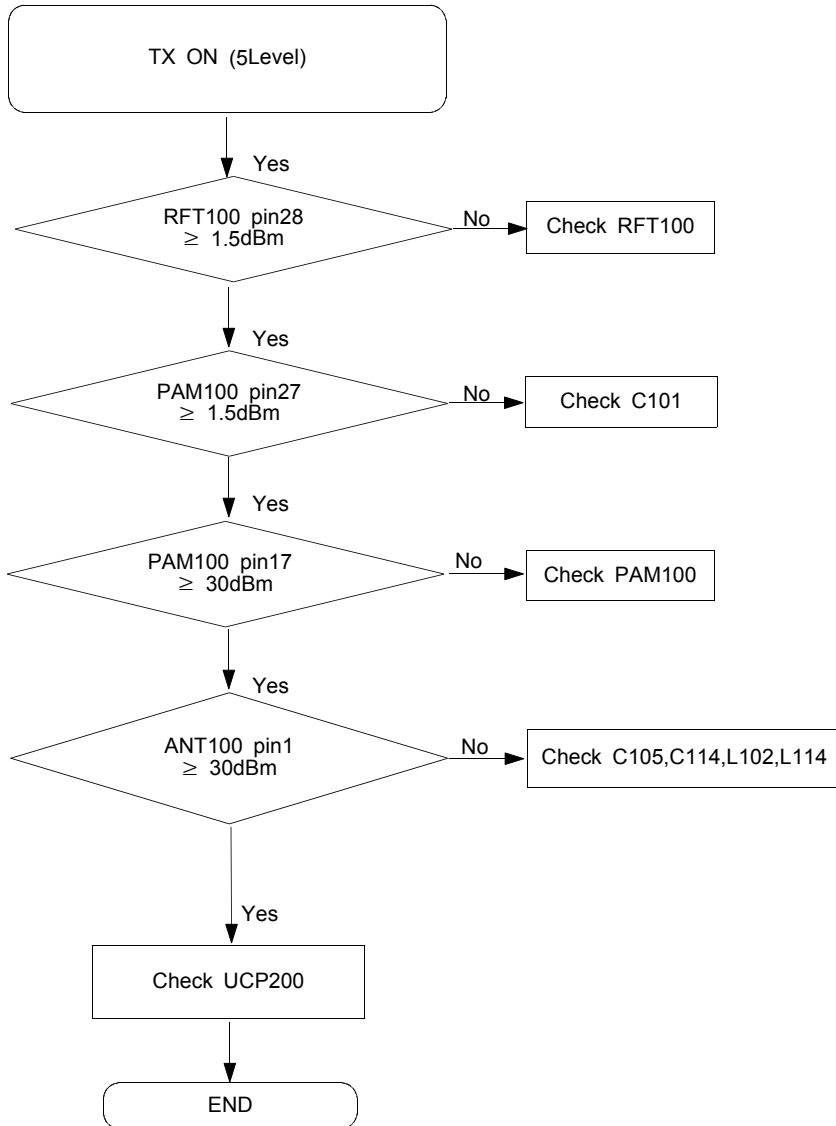


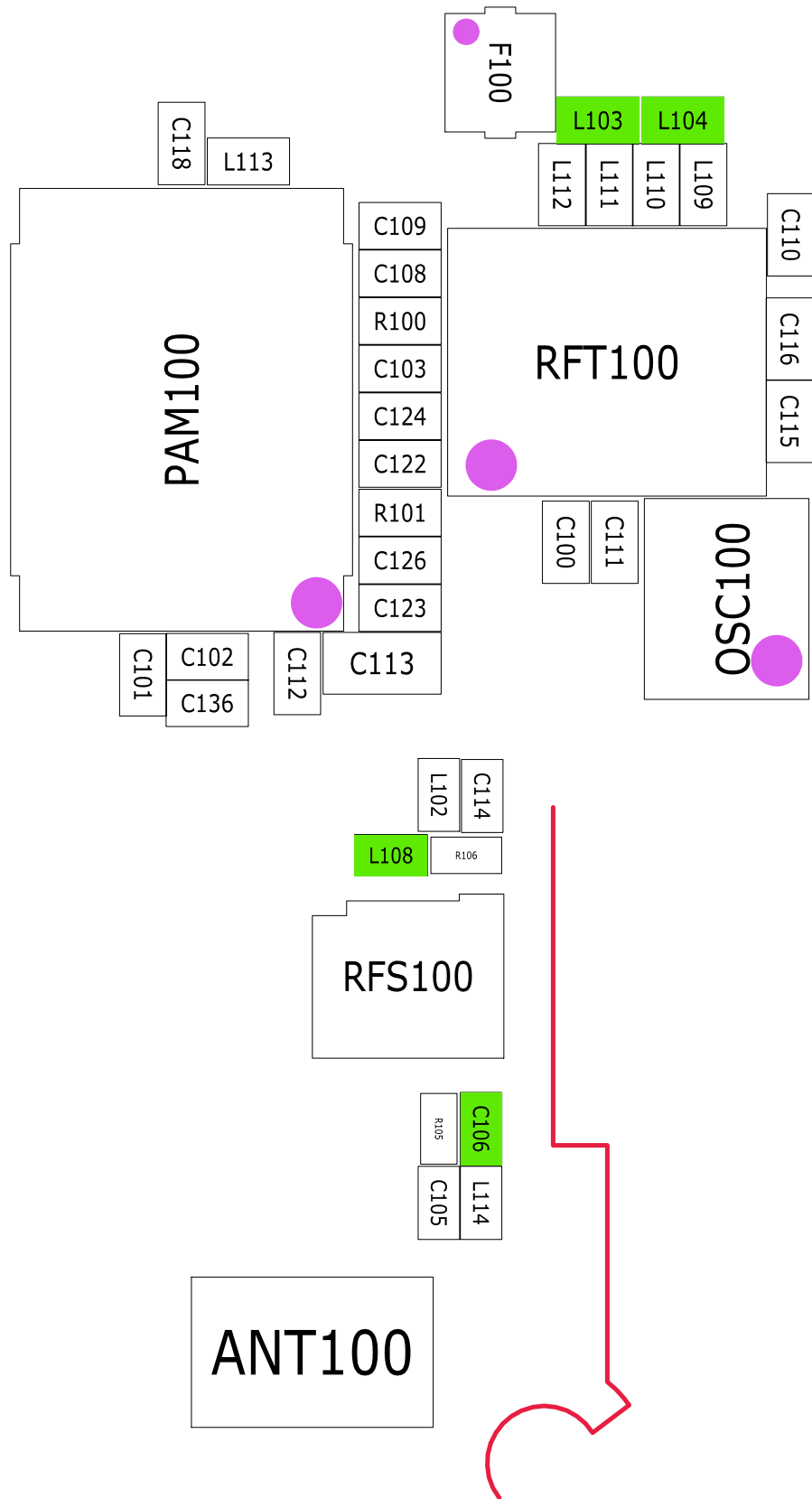
9-11. DCS Receiver



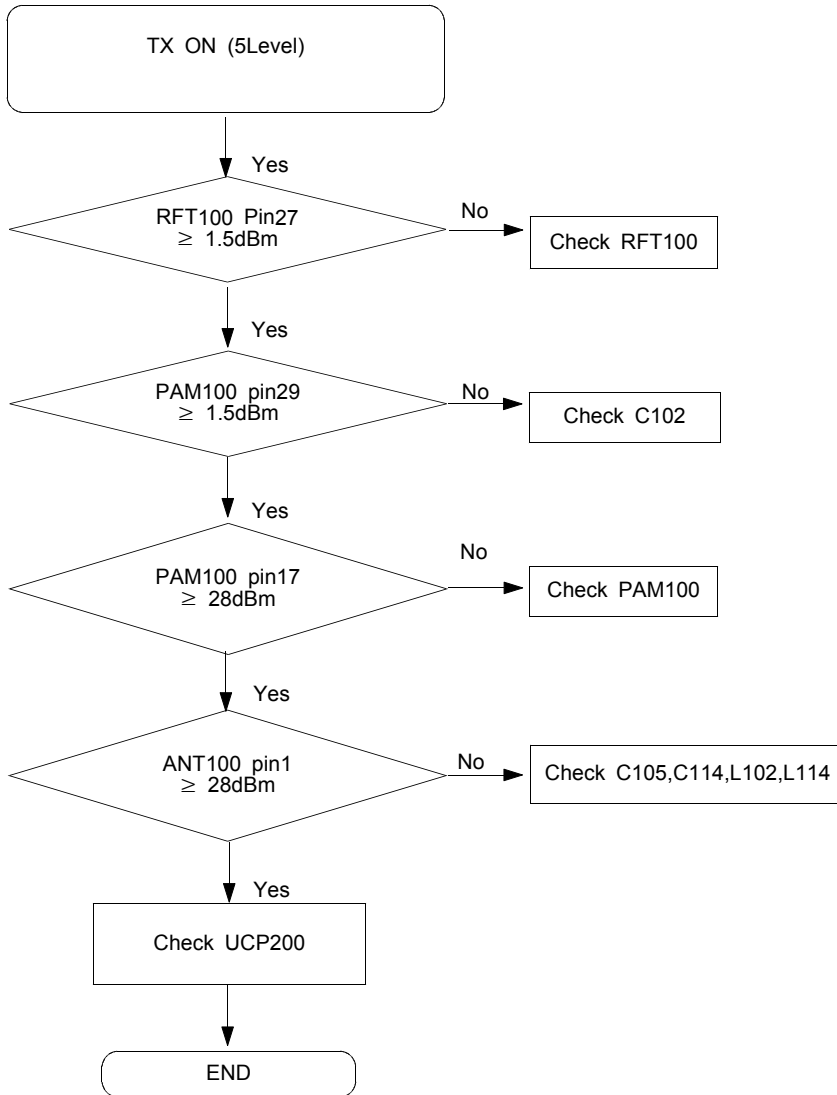


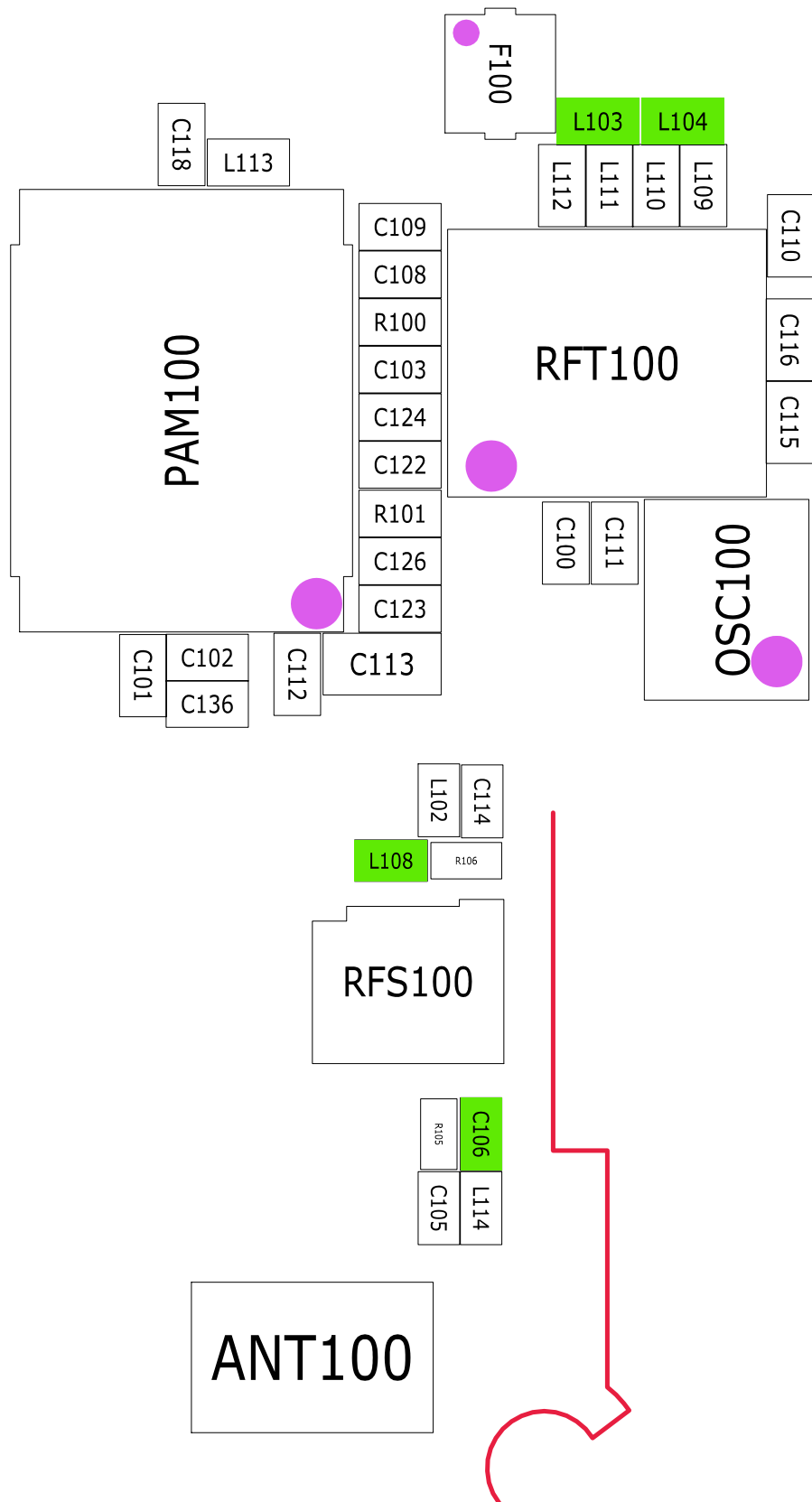
9-12. GSM Transmitter



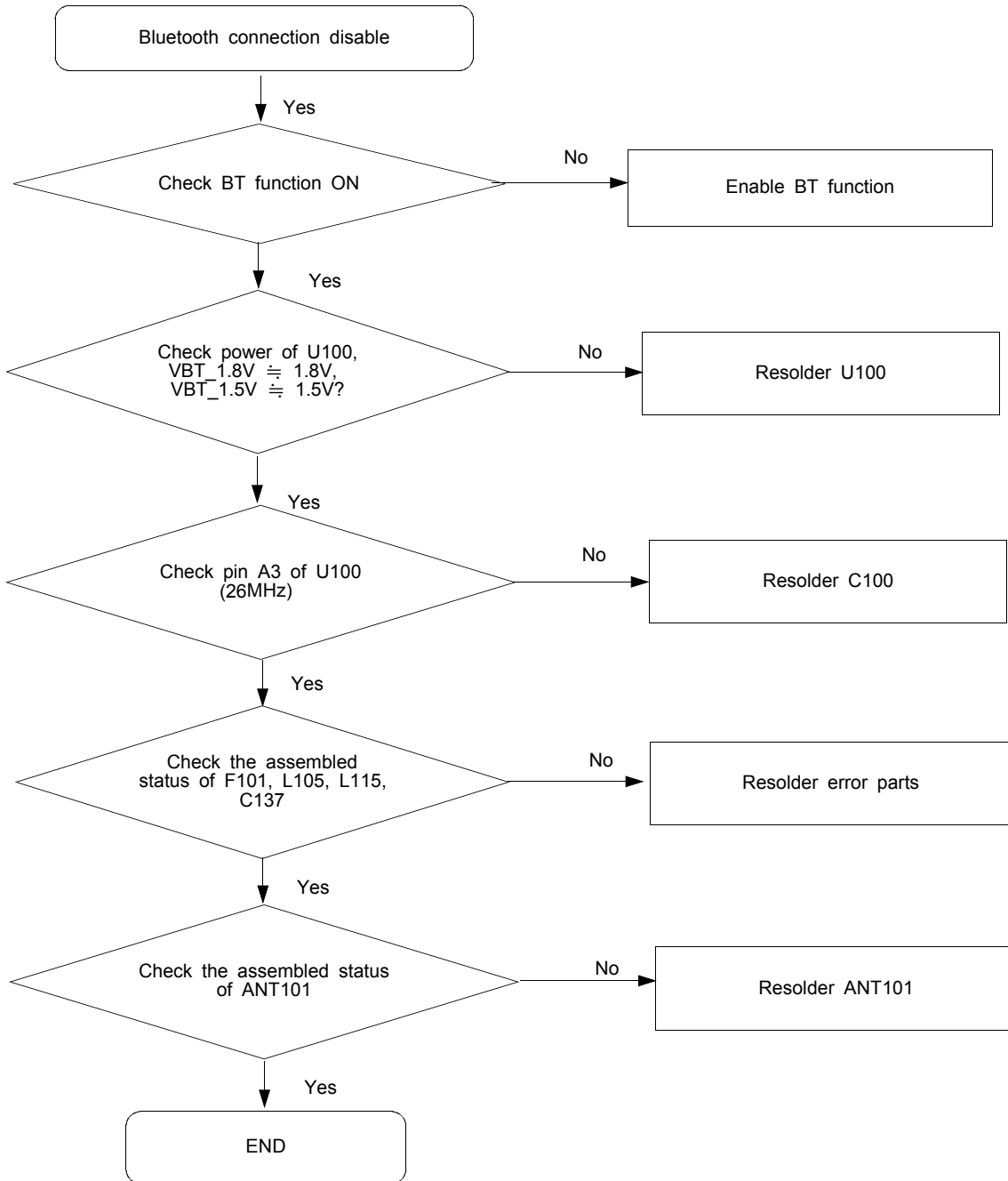


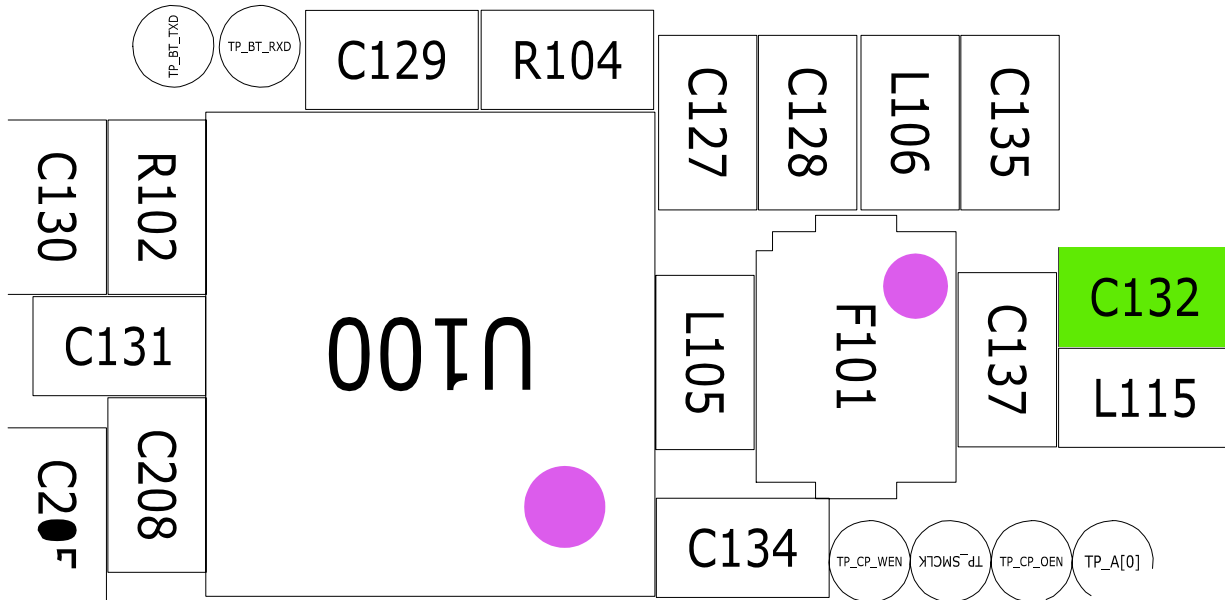
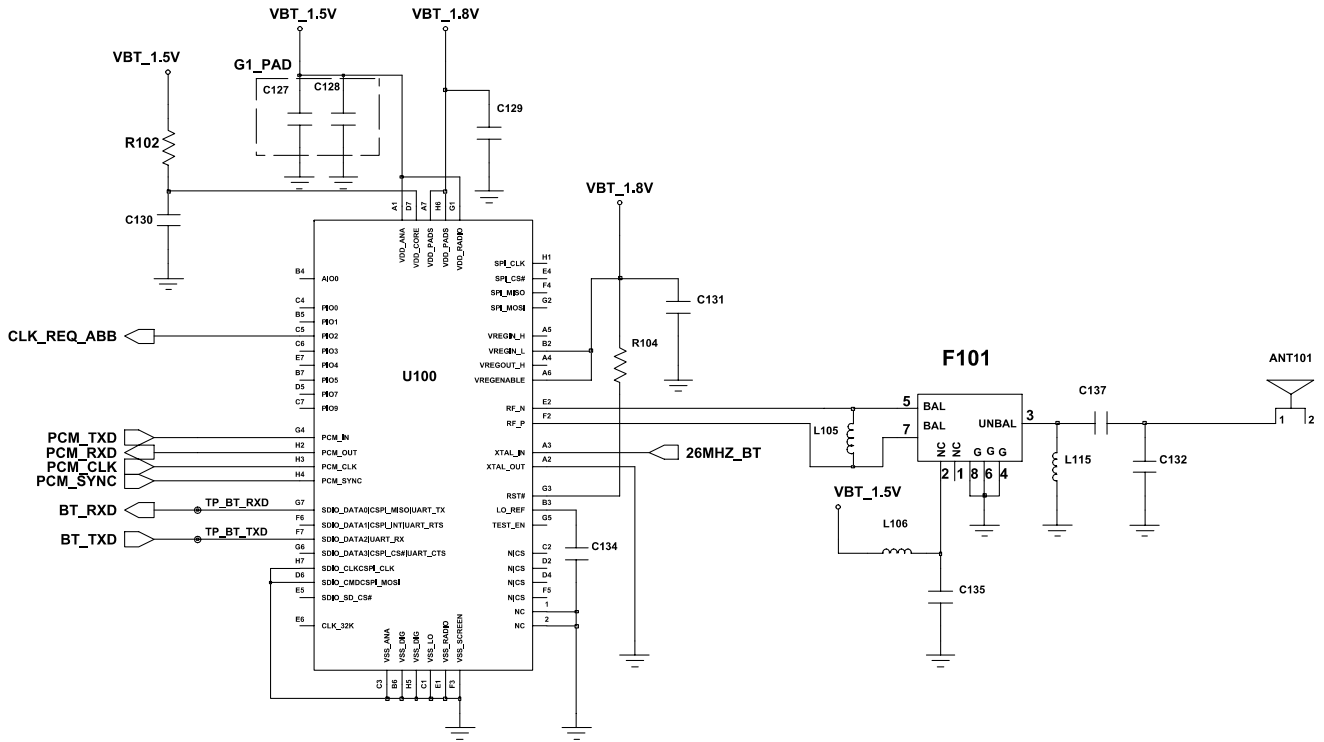
9-13. DCS Transmitter





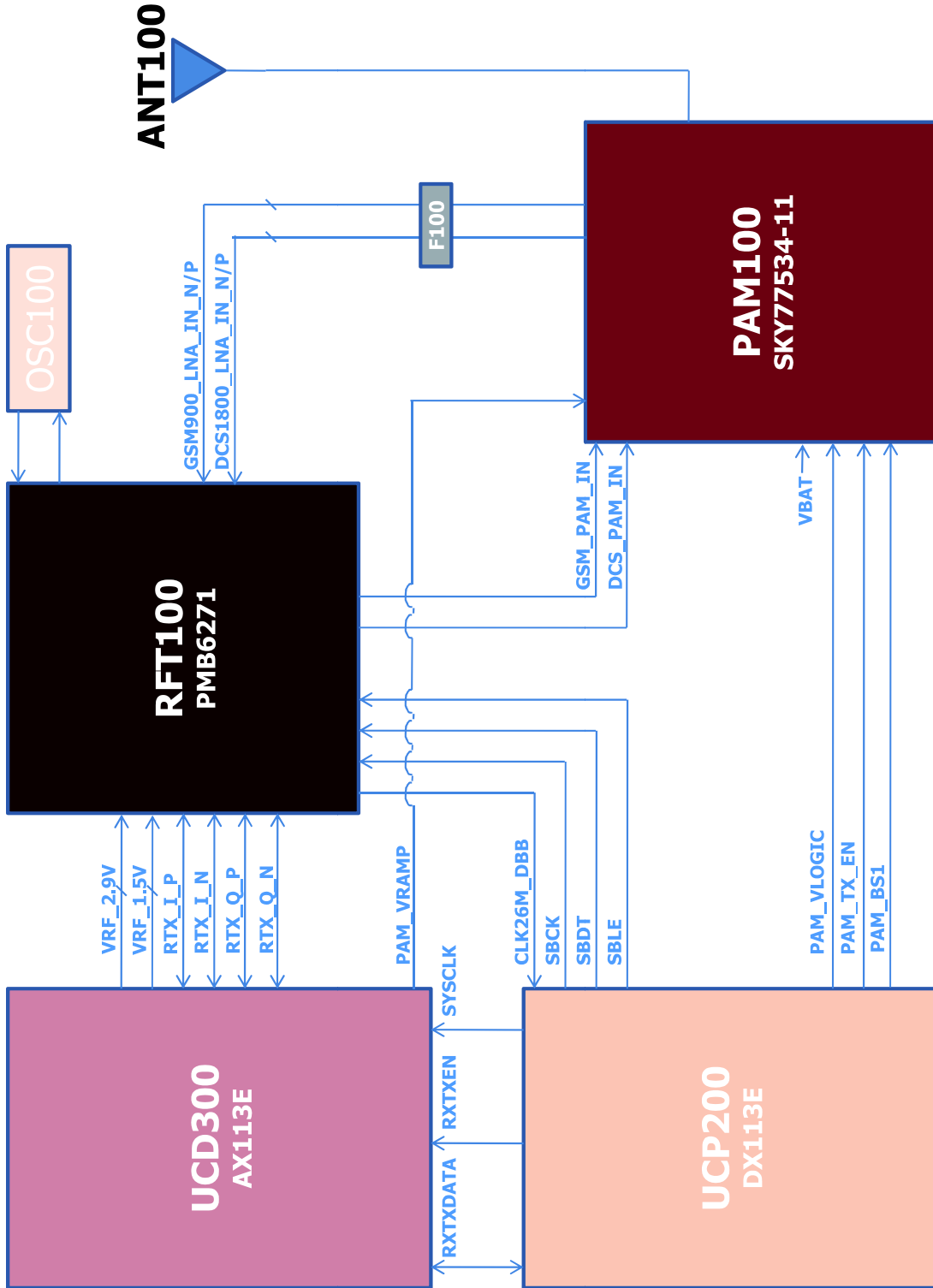
9-14. Bluetooth part



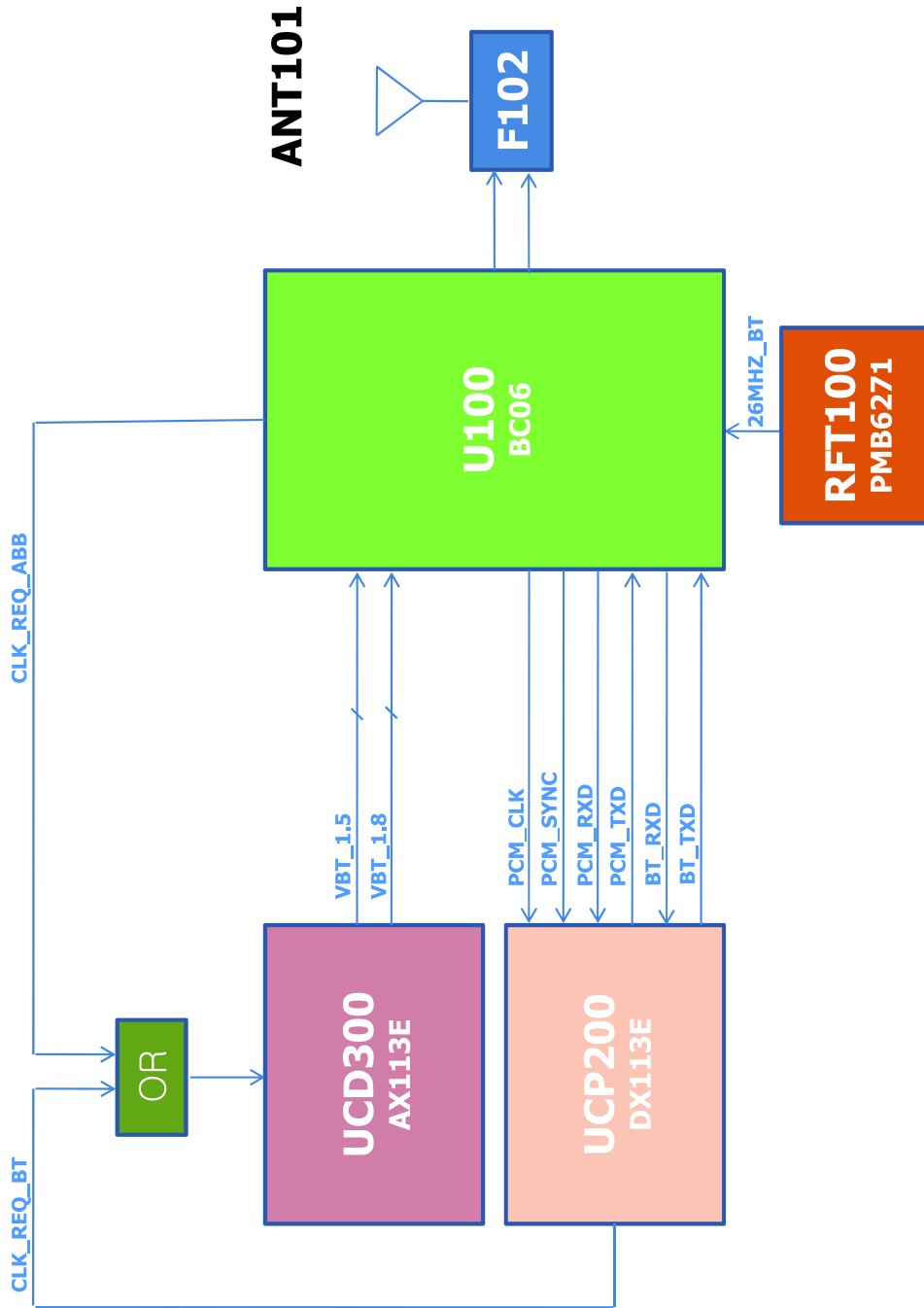


7. Block Diagrams

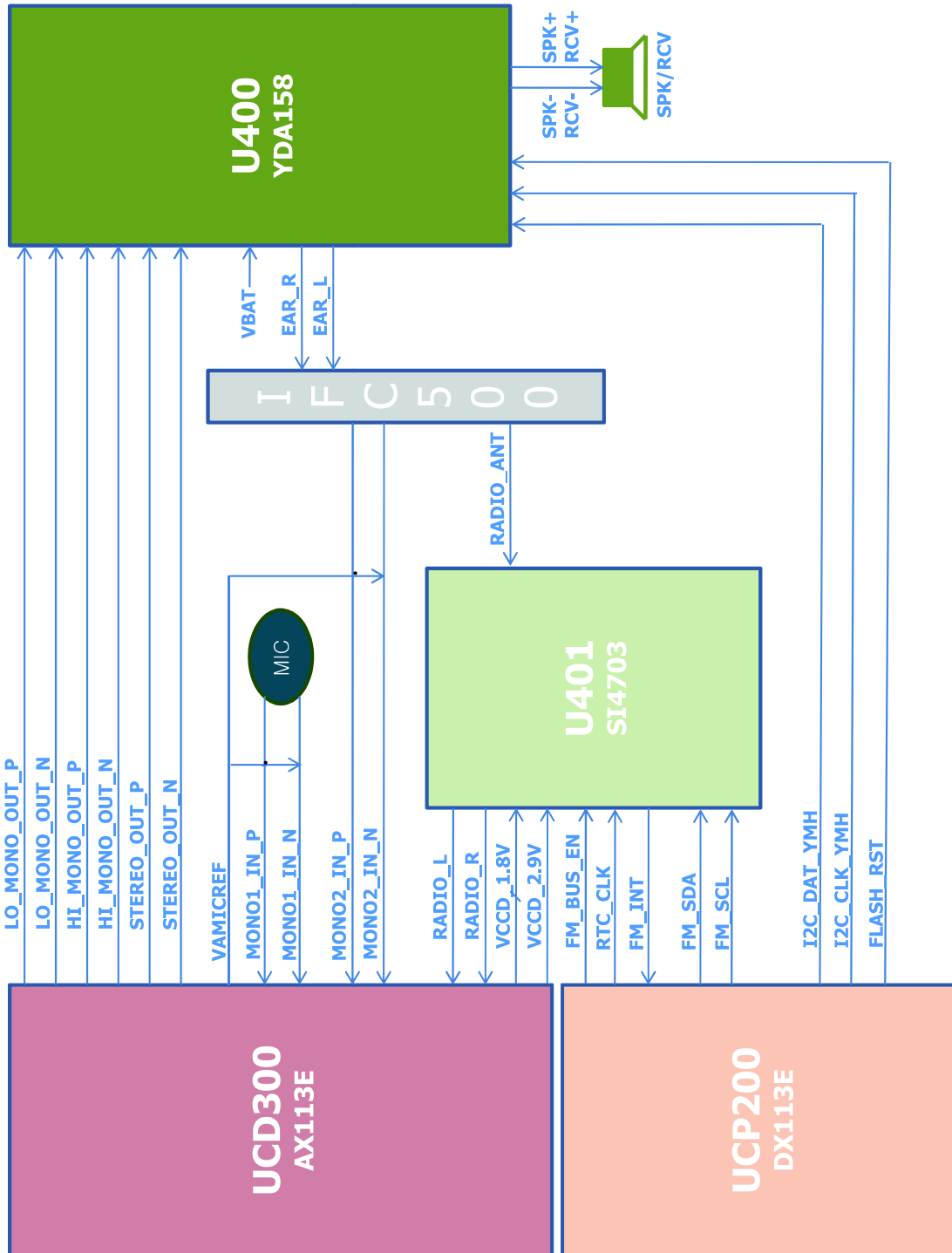
RF Block



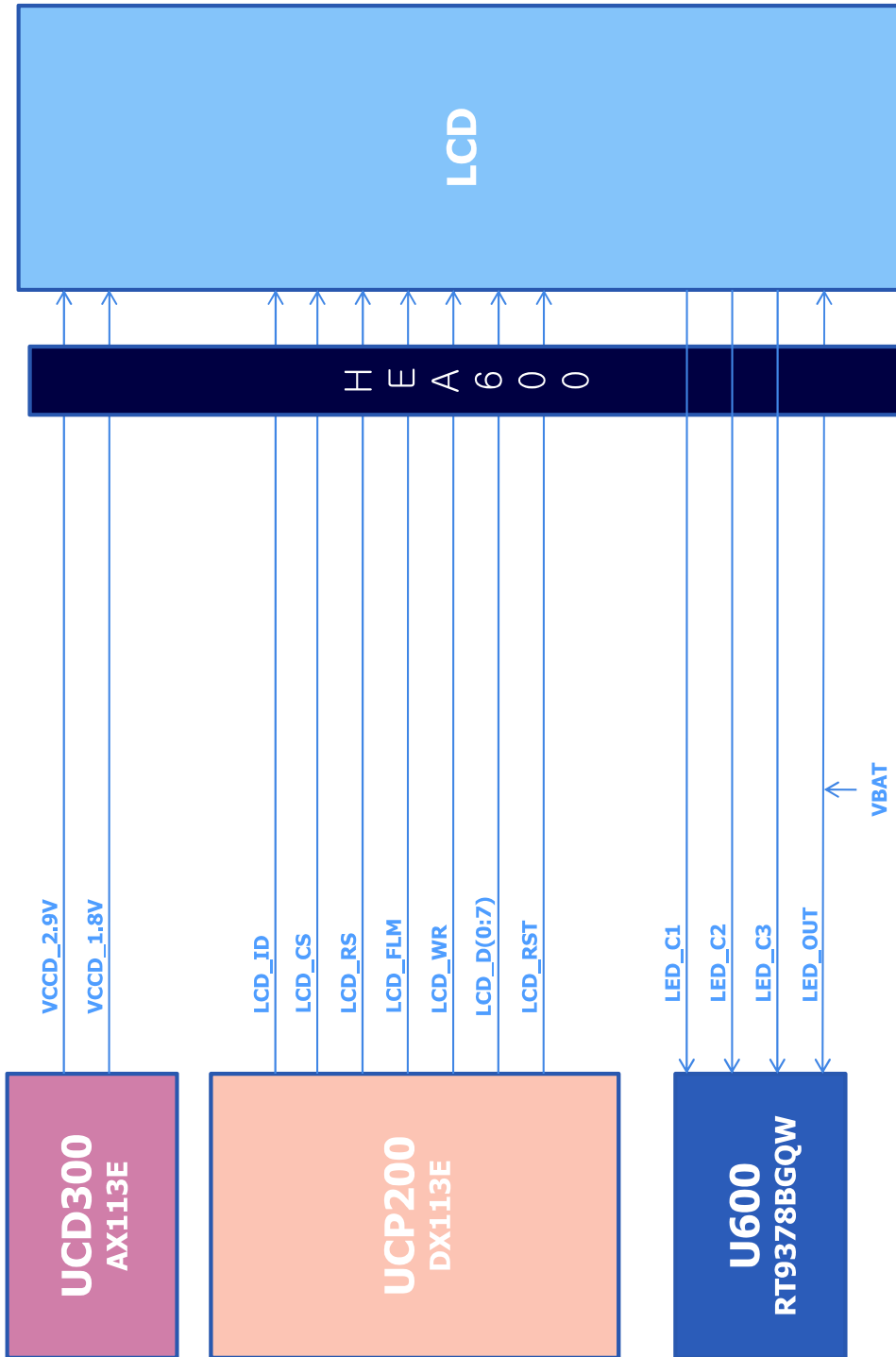
Bluetooth Block



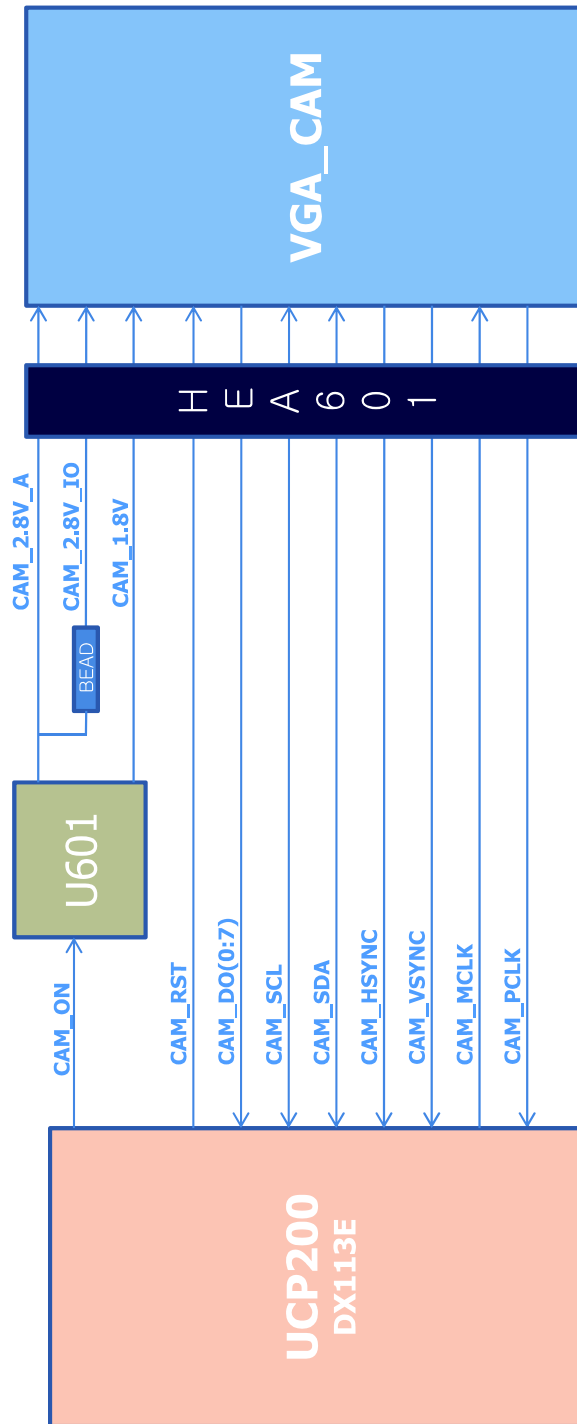
Audio Block (+ FM radio)



Display (LCD) Block



Camera Block



8. PCB Diagrams

