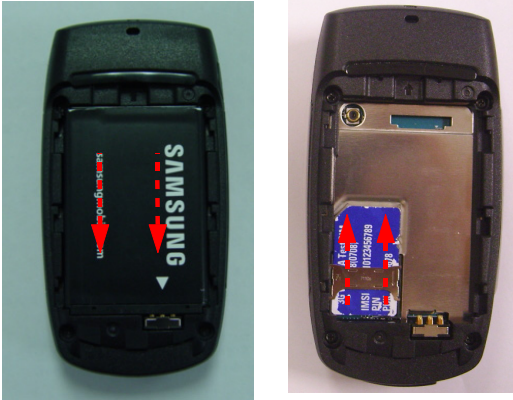


11. Disassembly and Assembly Instructions

11-1. Disassembly

1



- 1) Battery does desorption.
- 2) SIM card does desorption.

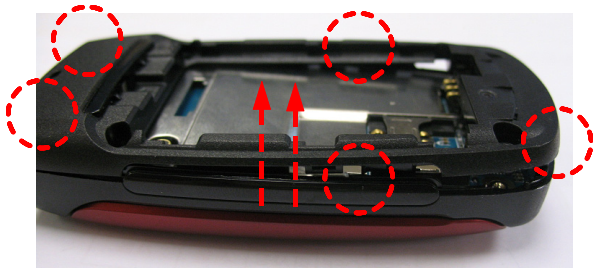
2



- 1) Remove screw 4 POINTs.

1) So that screw does not scratch to Set among exclusion and occur Observe.

3



- 1) Observe to hooker of total 6 part of Lear part Disjoint Lear.

1) When disjoint Lear, so that do not scratch to SET and occur Observe.

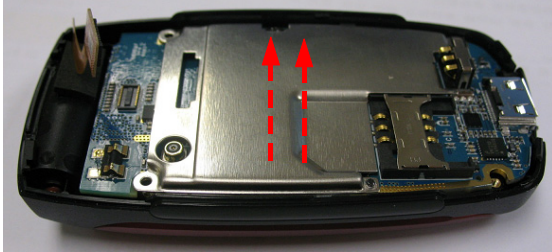
4



- 1) Disjoint CON TO CON Connector.

1) So that Connector at CON TO CON Connector decomposition is not damaged Observe.

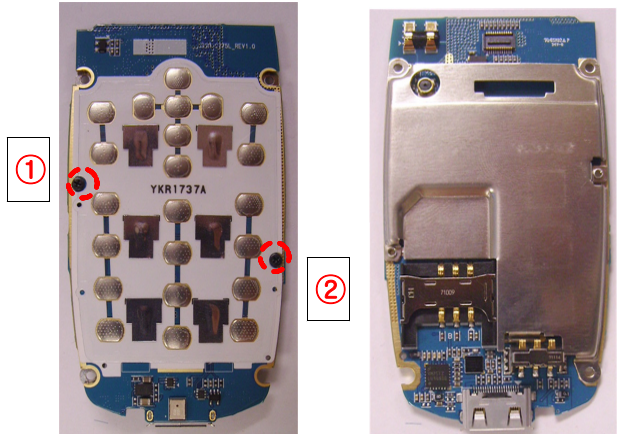
5



1) Disjoint PBA ASS' Y.

1) Observe that take side and disjoints.

6



1) Remove screw 2 POINTS.
2) Disjoint Sieldken.

1) So that screw does not scratch to Set among exclusion and occur Observe.

7



1) Remove Poron sponge.
2) Remove dust inflow prevention TAPE.
3) Disjoint keypad.

1) Take care so that Connector CON TO CON may not be damaged.

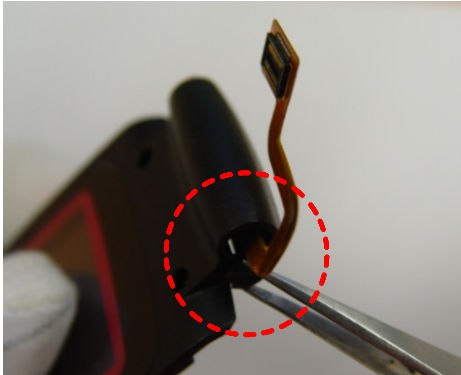
8



1) FOLDER UPPER part separates FRONT segment.

1) When work separation, so that CON TO CON Connector is not tear Observe.

9



1) Disjoint rubber cover.

1) When work separation, so that CON TO CON Connector does not tear Observe.

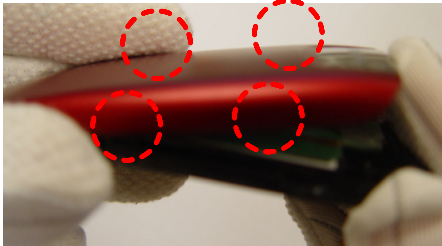
10



1) Disjoint SCREW cover.
2) Remove SCREW 2 POINTS.

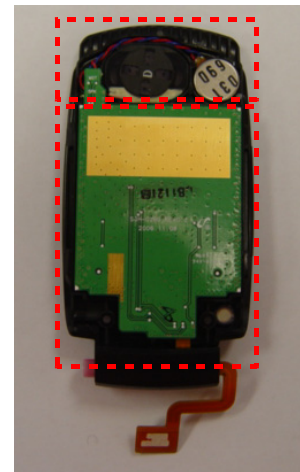
1) When disjoint, so that do not and produce scratch to LOWER Observe.

11



1) Observes to hooker of total 4 part and disjoints FOLDER.

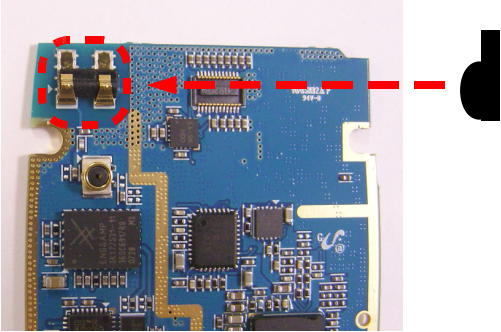
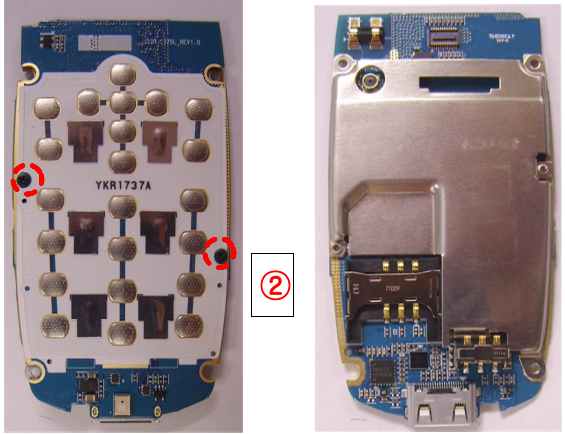
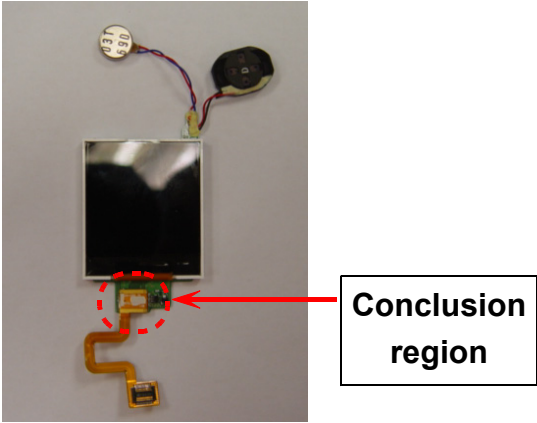

1) Take care so that group may not go to FOLDER.
2) Take care so that LCD may not be damaged.

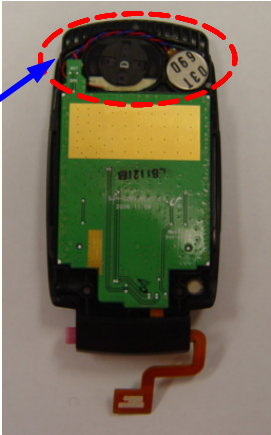
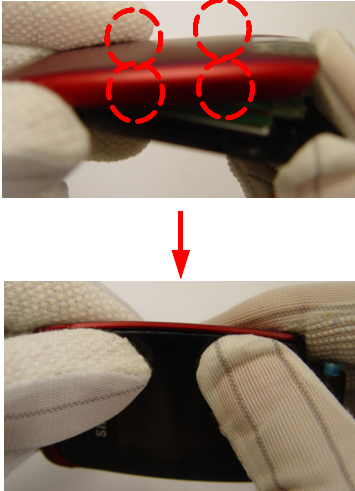




1) Disjoint LCD module.
2) Disjoint speaker, motor.

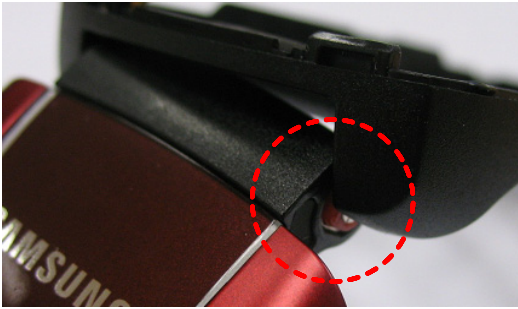
1) Take care so that camera FPCB may not be damaged.

11-2. Assembly

<div style="border: 1px solid black; padding: 5px; width: 30px; float: left; margin-bottom: 10px;">1</div> <div style="border: 1px solid black; padding: 5px; width: fit-content; margin-left: auto; margin-right: auto;"> <p style="text-align: center;">Intenna contact rubber side view</p> </div>  <div style="border: 1px solid black; padding: 5px; margin-top: 20px;"> <p>1) Insert Intenna rubber.</p> </div>	<div style="border: 1px solid black; padding: 5px; width: 30px; float: left; margin-bottom: 10px;">2</div>  <div style="border: 1px solid black; padding: 5px; margin-top: 20px;"> <p>1) Sildeukenfor baud arrive safe. 2) Contract screw 2 POINTs.</p> </div>
<p>1) Take care so that Intenna or Connector may not be damaged.</p>	<p>1) Observe for screw torque and contracts. 2) Contract screw after Sieldcan arrives safe correctly.</p>
<div style="border: 1px solid black; padding: 5px; width: 30px; float: left; margin-bottom: 10px;">3</div>  <div style="border: 1px solid black; padding: 5px; margin-top: 20px;"> <p>1) Confirm LCD, MOT, SPK. 2) Contract LCD module and CON TO CON.</p> </div>	<div style="border: 1px solid black; padding: 5px; width: 30px; float: left; margin-bottom: 10px;">4</div>  <div style="border: 1px solid black; padding: 5px; margin-top: 20px;"> <p>1) Compress windows to FOLDER LOWER.</p> </div>
<p>1) Take care so that do not become semijoint.</p>	

<p>5</p>  <p>Wire processing attention</p> <p>1) Insert CON TO CON FPCB through hinge. 2) Windows arrive safe. 3) Speaker, motor arrive safe.</p>	<p>6</p>  <p>1) Observes to hooker of total 4 part and assembles FOLDER.</p>
<p>1) Pay attention to wire settlement. 2) Take care so that fore body may not come on windows. 3) Take care so that there may not be that attach CON TO CON FPCB.</p>	<p>1) Take care so that group may not go to FOLDER. 2) Take care so that LCD may not be damaged.</p>
<p>7</p>  <p>1 Contract SCREW 2 POINTs. 2 Insert SCREW cover.</p>	<p>8</p>  <p>1) Insert rubber.</p>
<p>1) When assemble, so that do not and produce scratch to LOWER Observe.</p>	<p>1) Take care to be inserted perfectly.</p>

9



1) When open FOLDER about 120° opposite
Press protruded segment of hinge to end part
of rod Insert.

10

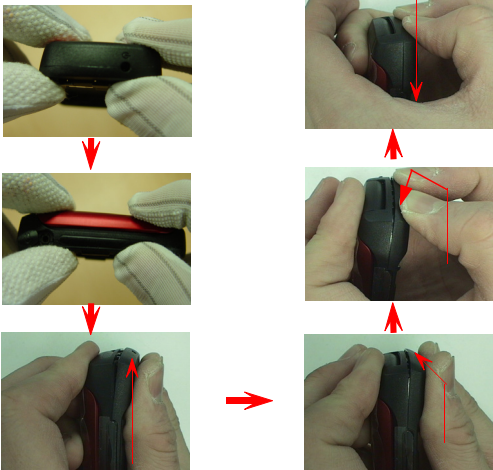


1) PBA arrive safe.
2) Combine CON TO CON.

1) When pass to FRONT's groove, pay attention to
damage of LCD connector.
2) When insert FOLDER F-PCB for FRONT's hinge
segment F-PCB That avoid being chewed.

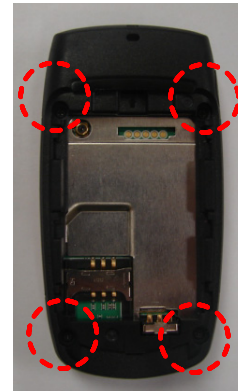
1) Take care so that Connector may not be unfamiliar.

11



1) After infix from lower column department hook part
in order Assemble Lear.

12



1) Contract screw 4 POINTS.

1) Confirm FOLDER tension.
2) Confirm GAP.

1) Take care so that damage may not go to SET.