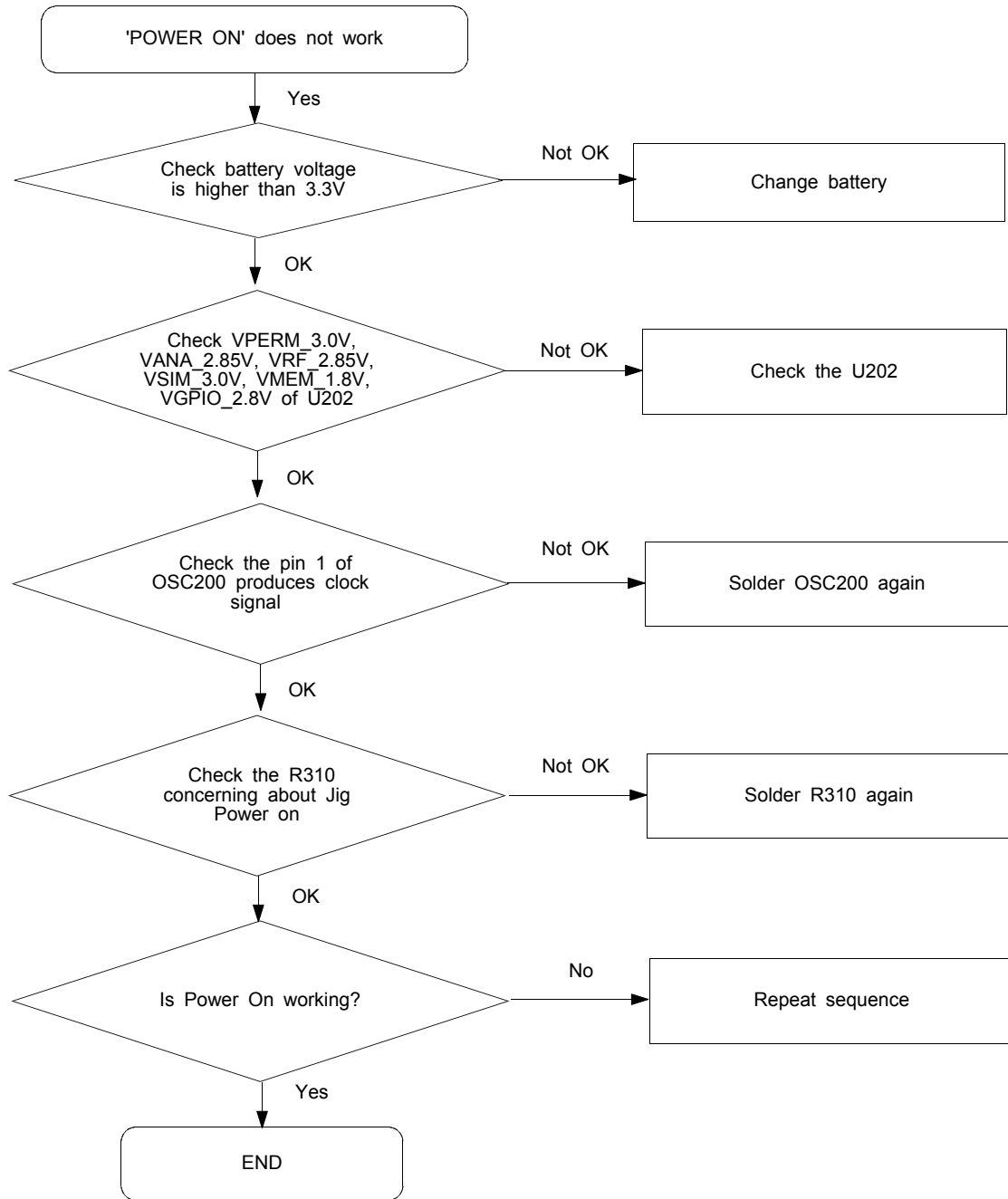
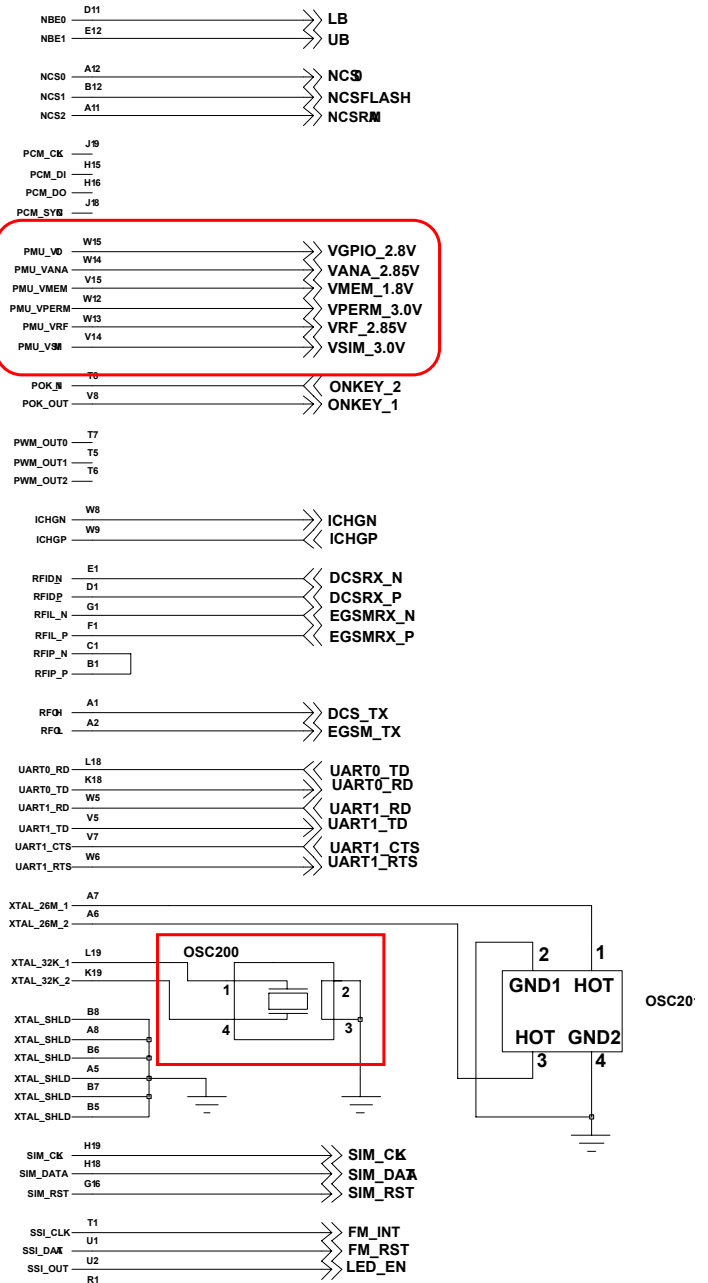
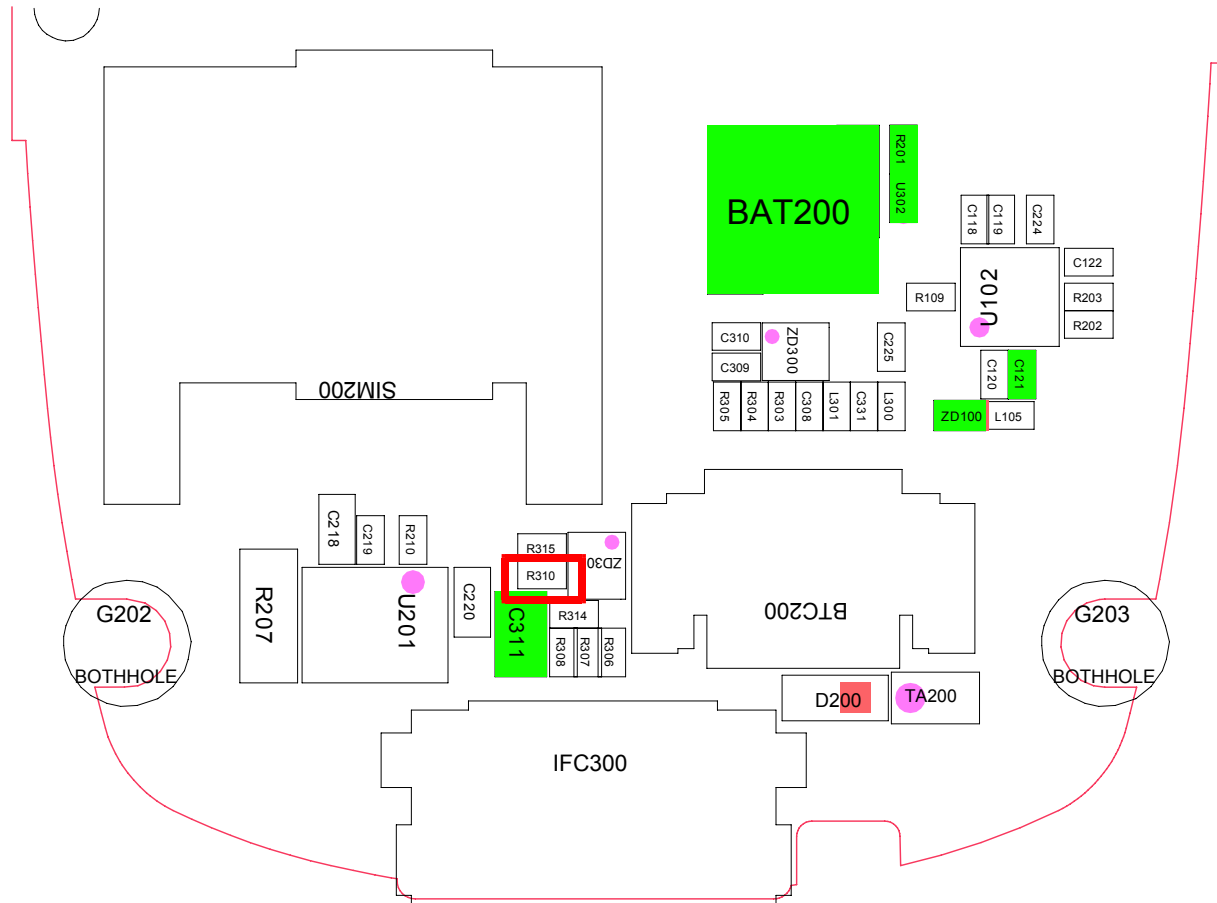
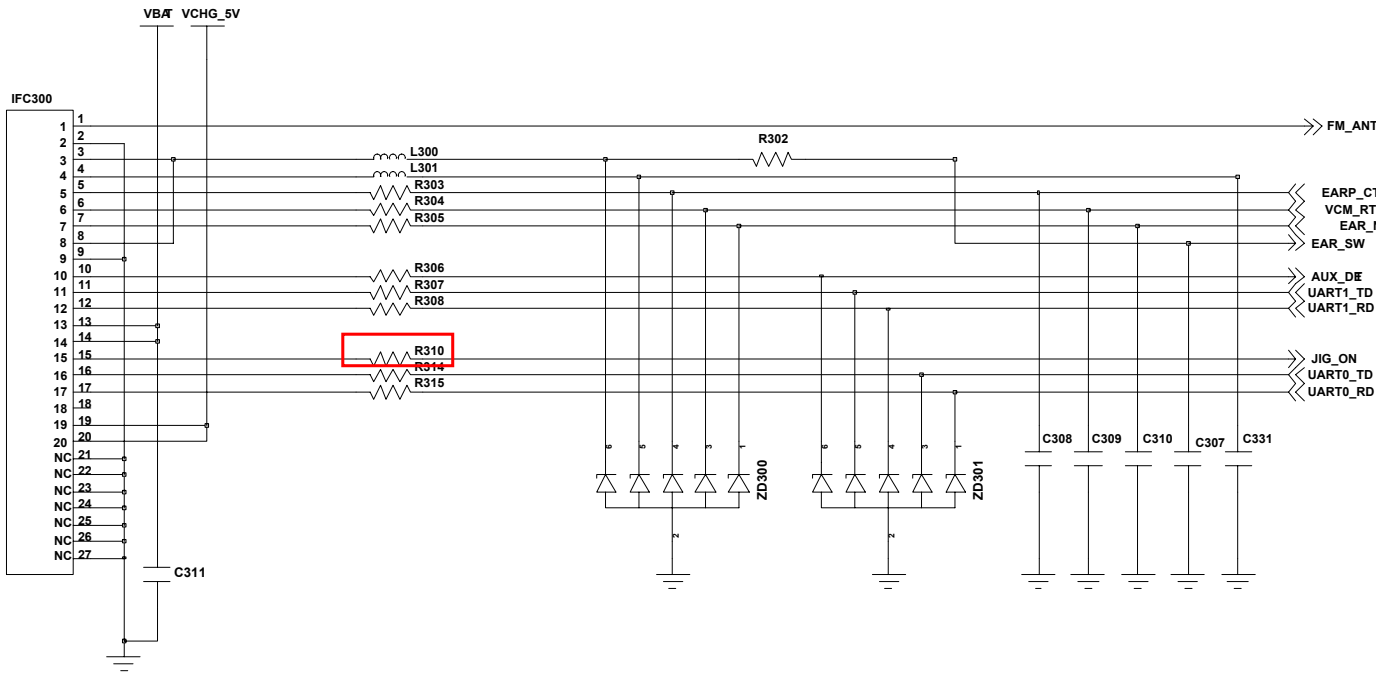


9-1. Power On

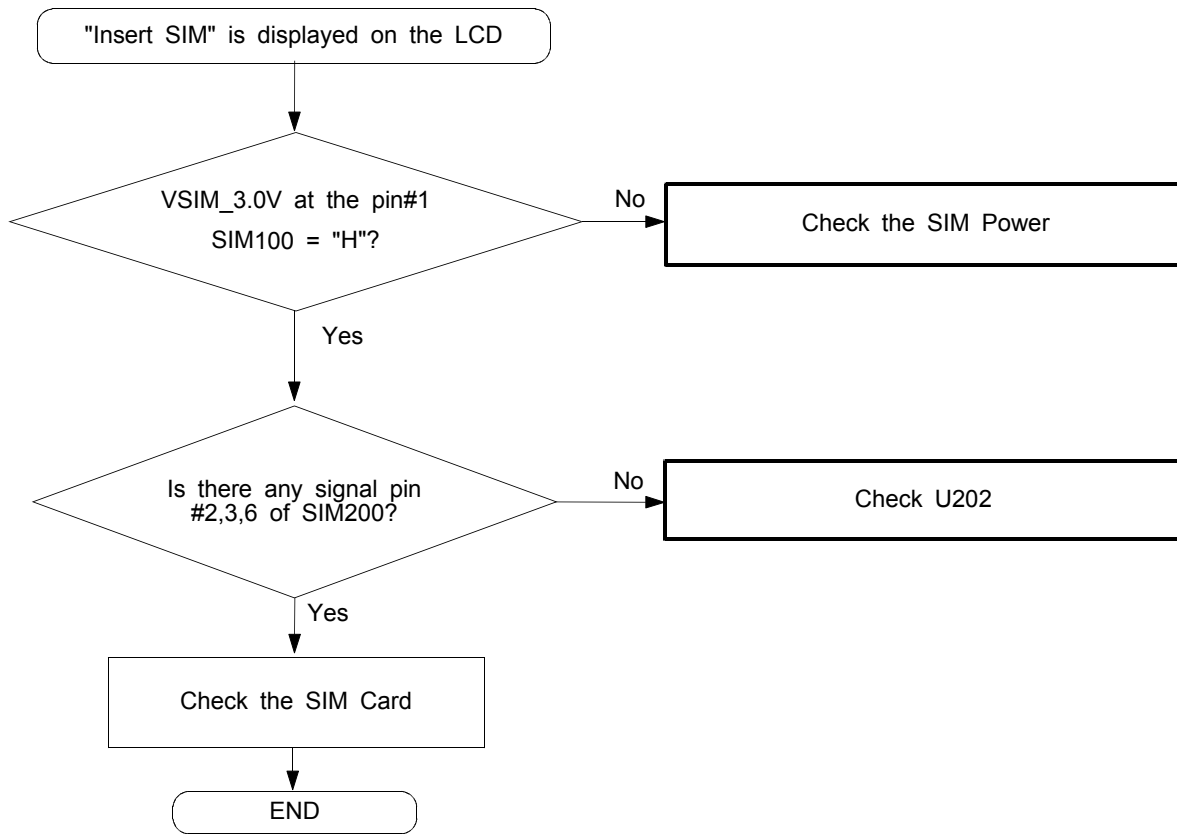


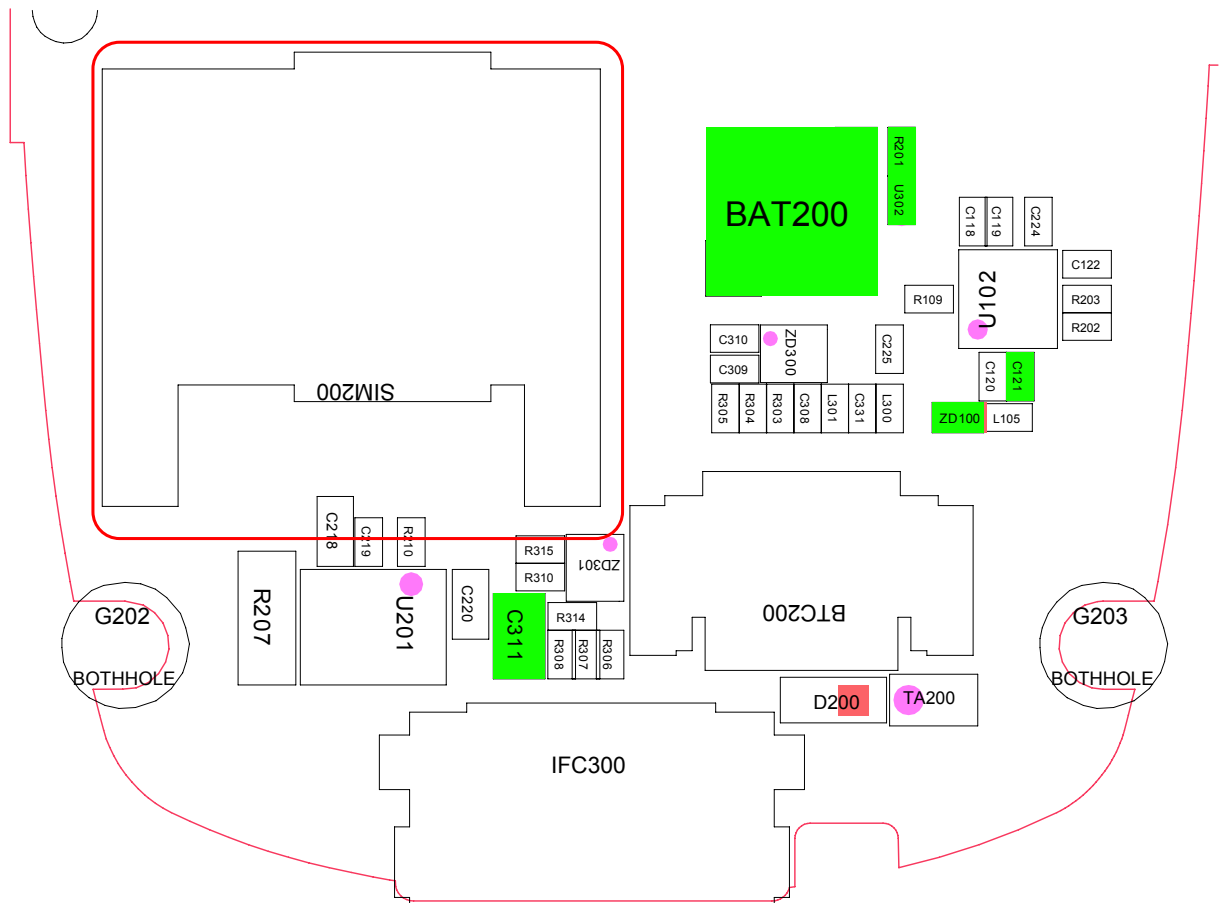
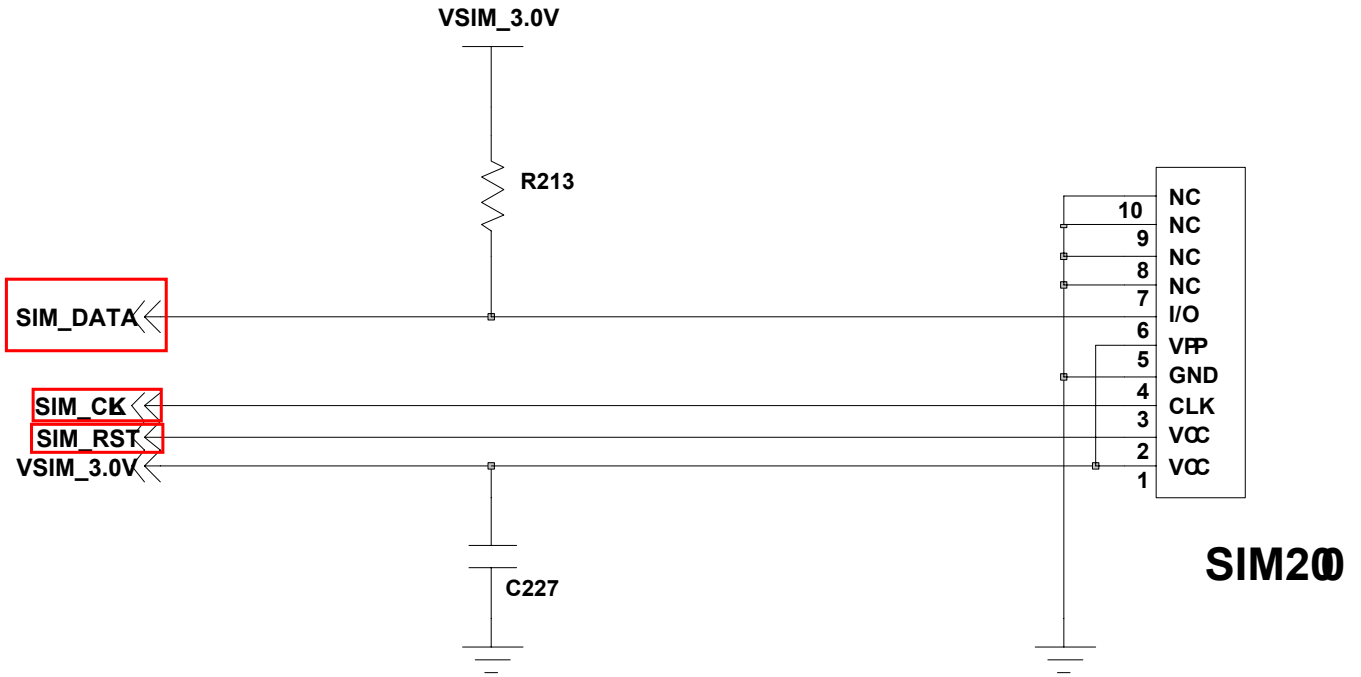
U202



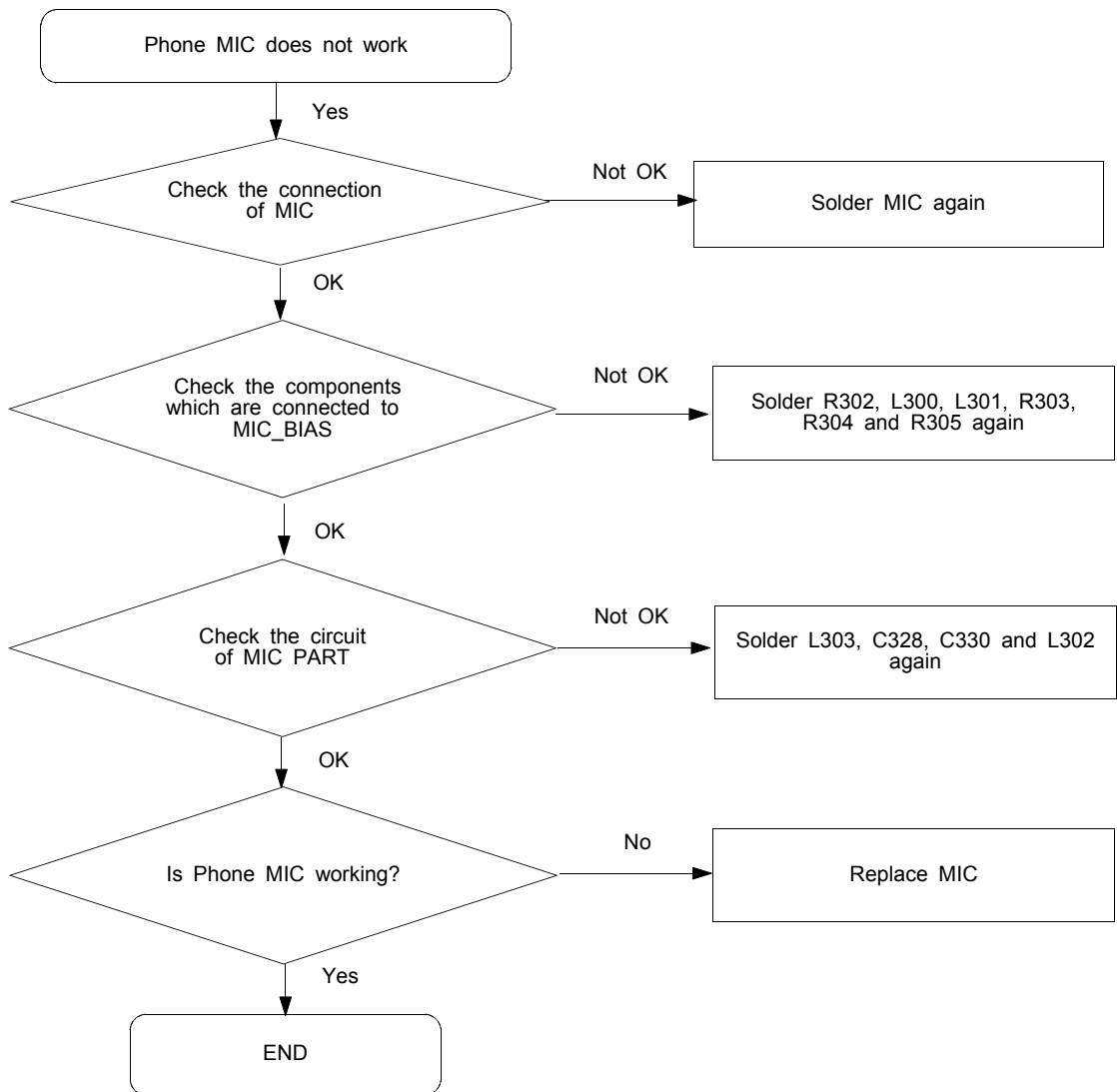


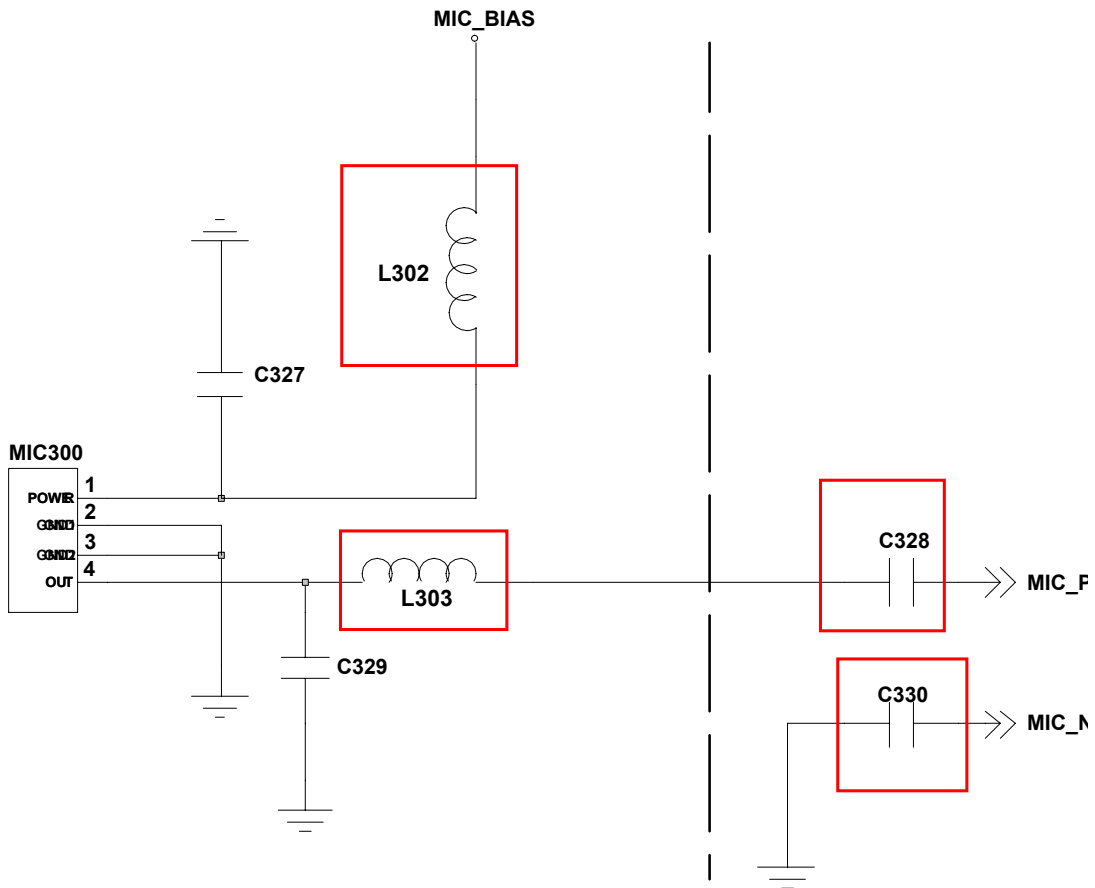
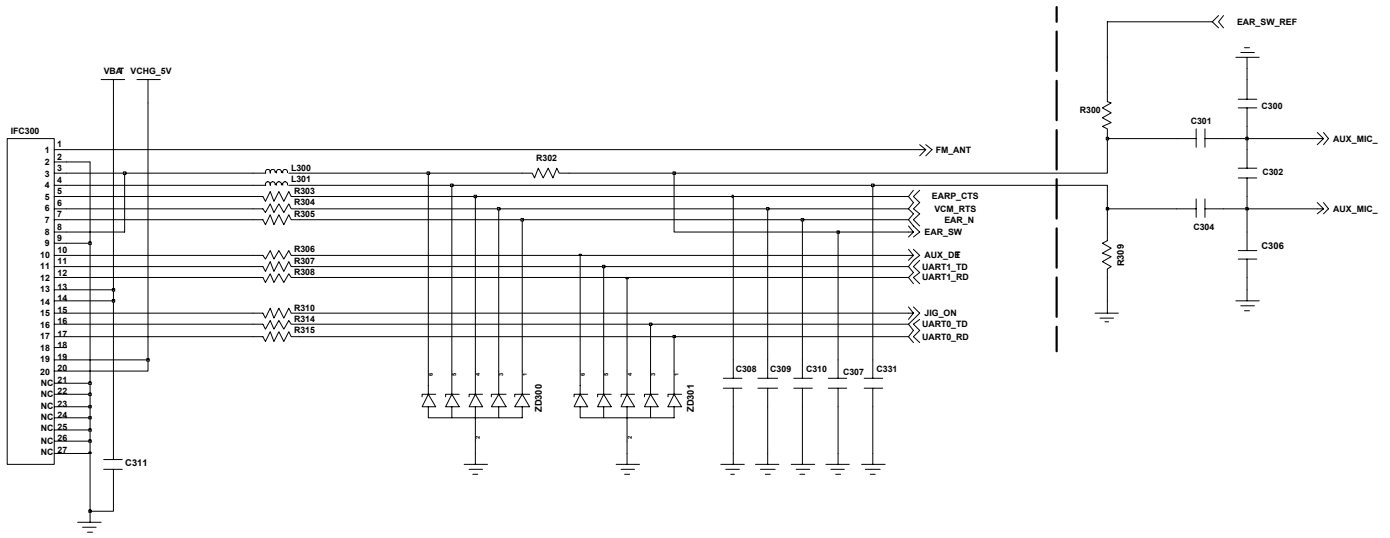
9-2. SIM Part



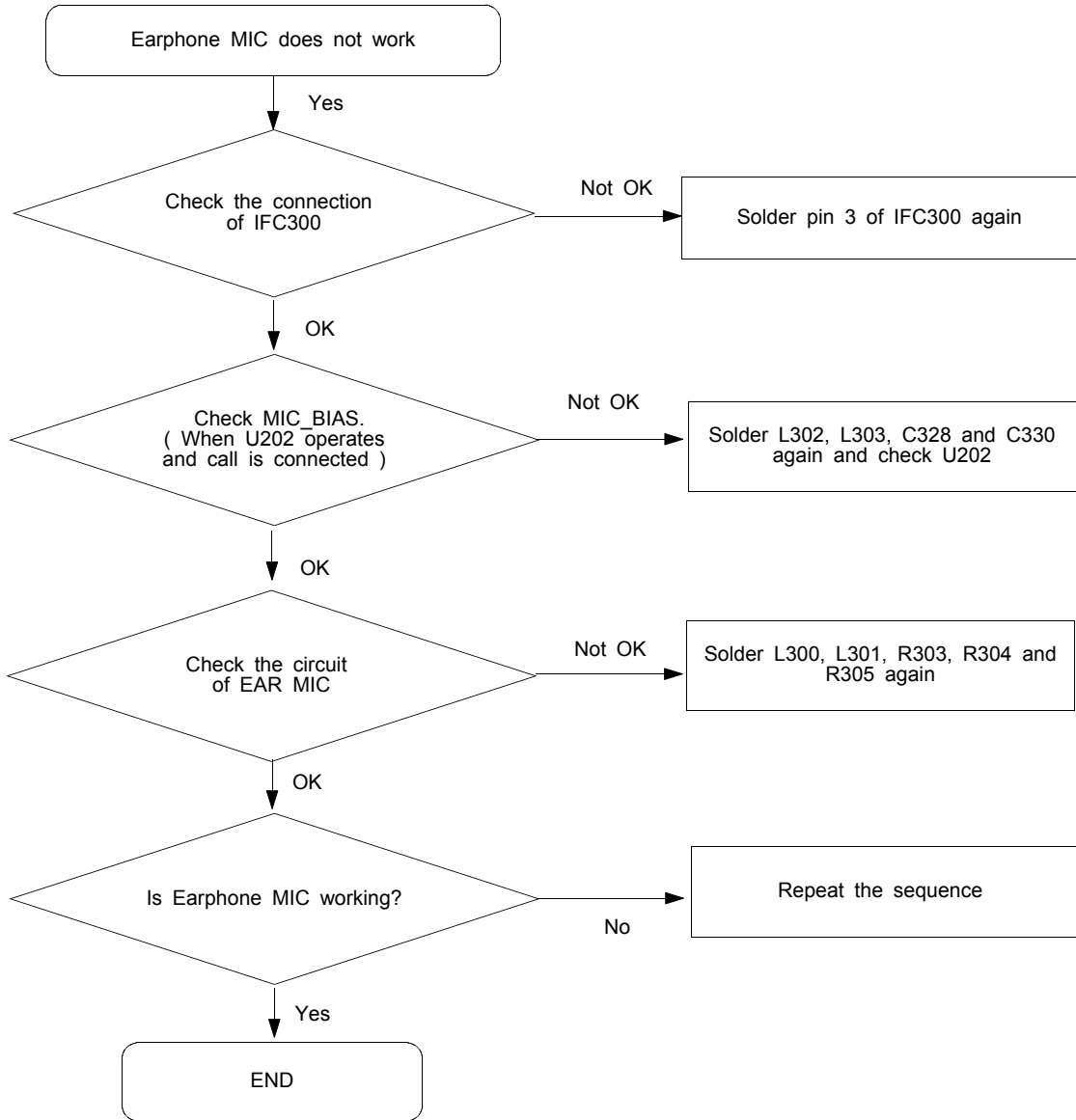


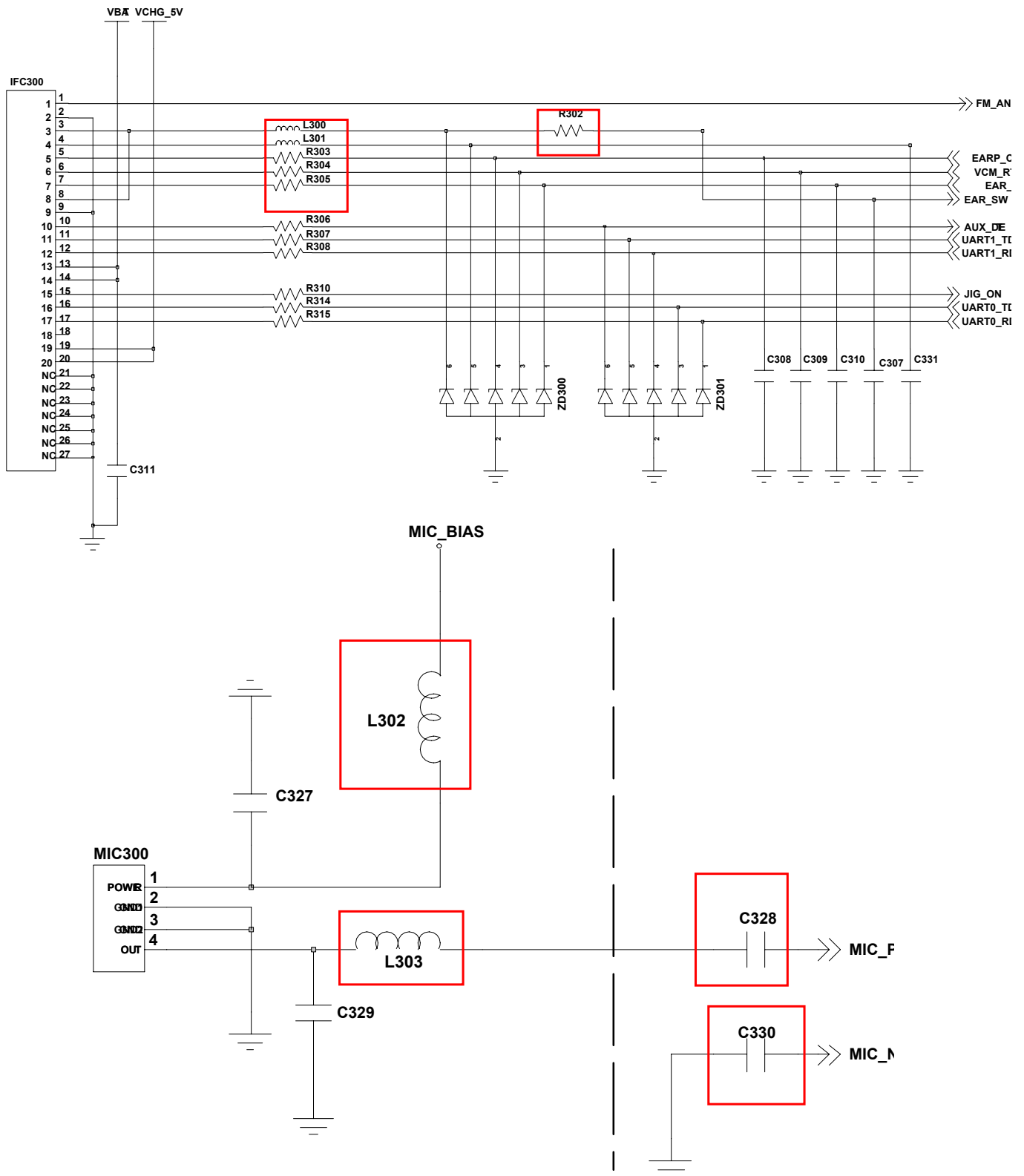
9-3. Microphone Part - Phone MIC



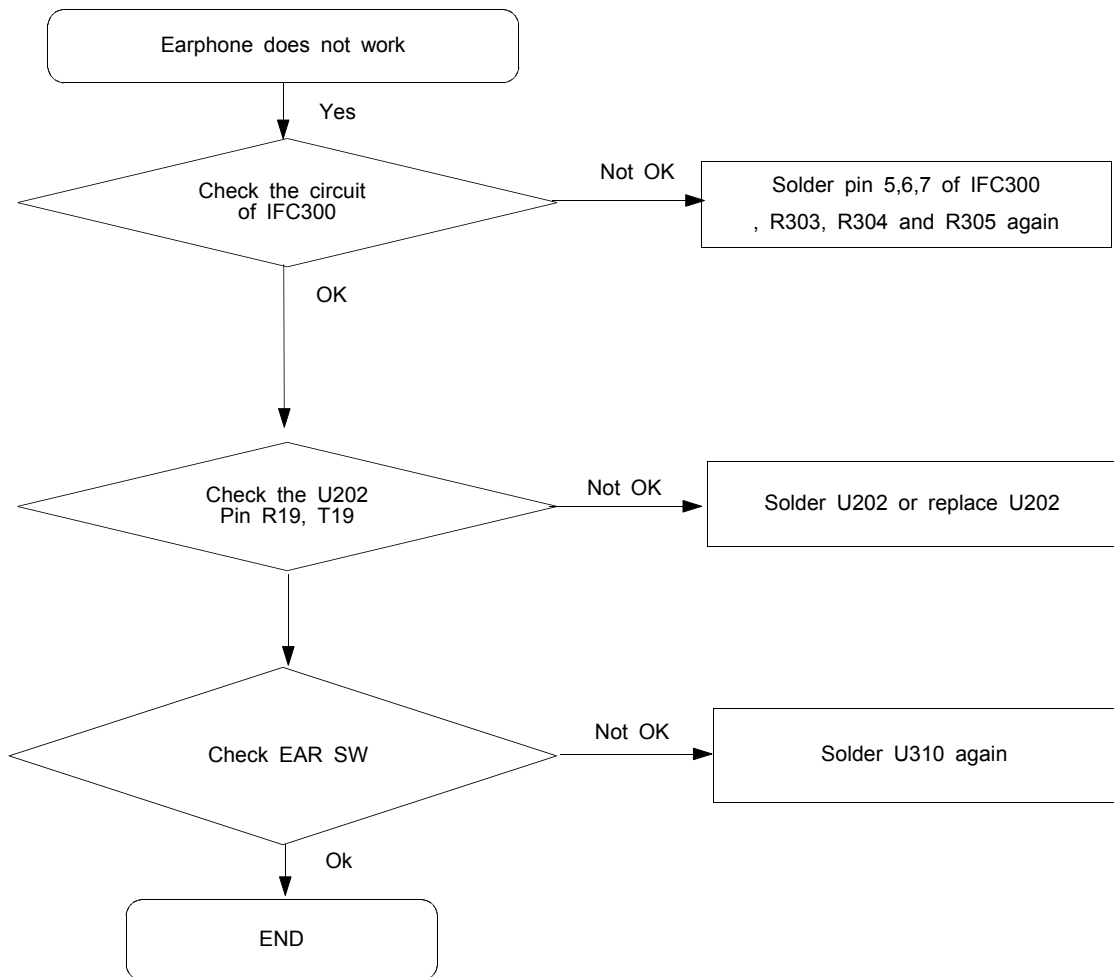


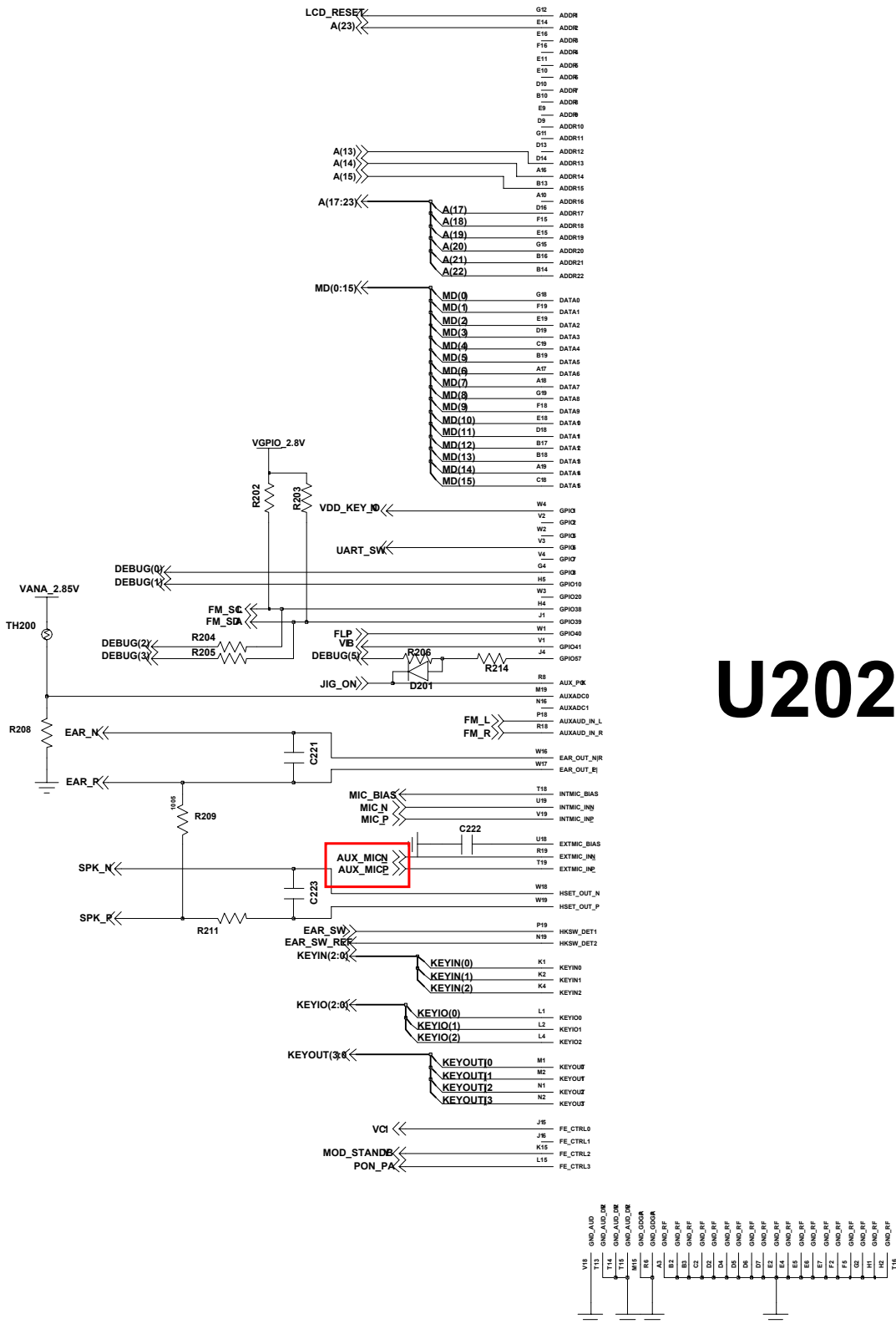
9-4. Microphone Part - Earphone MIC





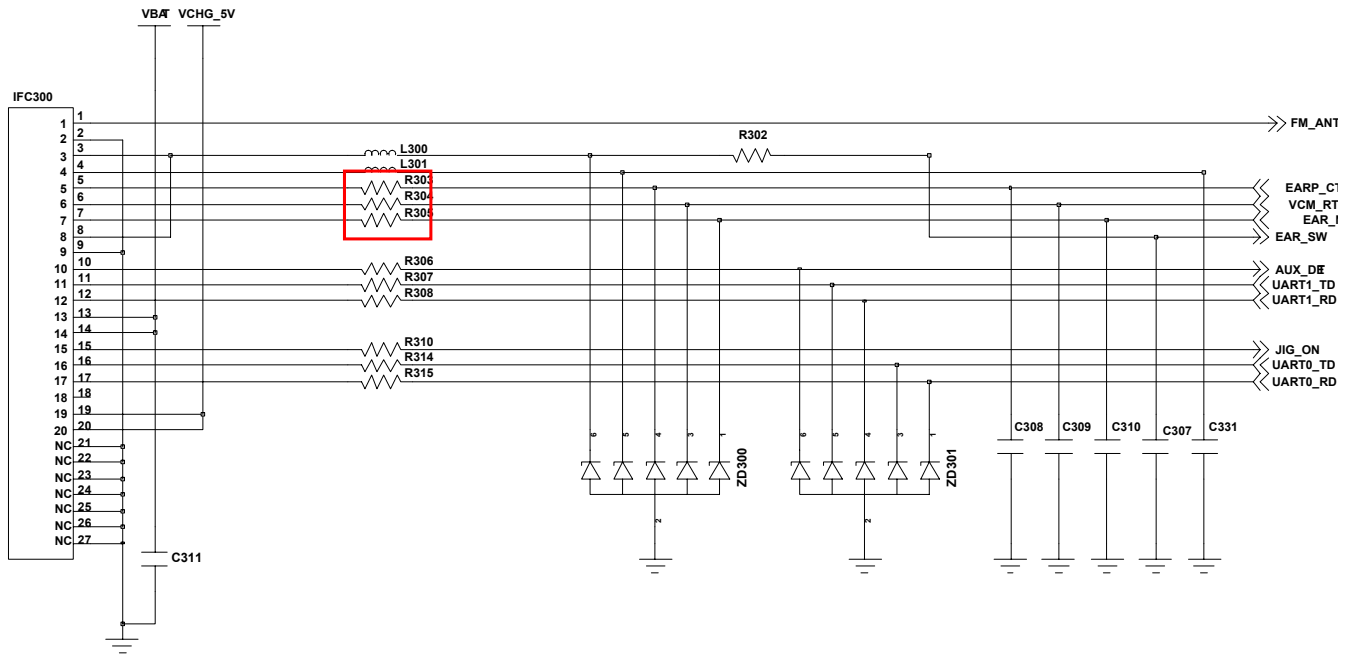
9-5. Earphone Part



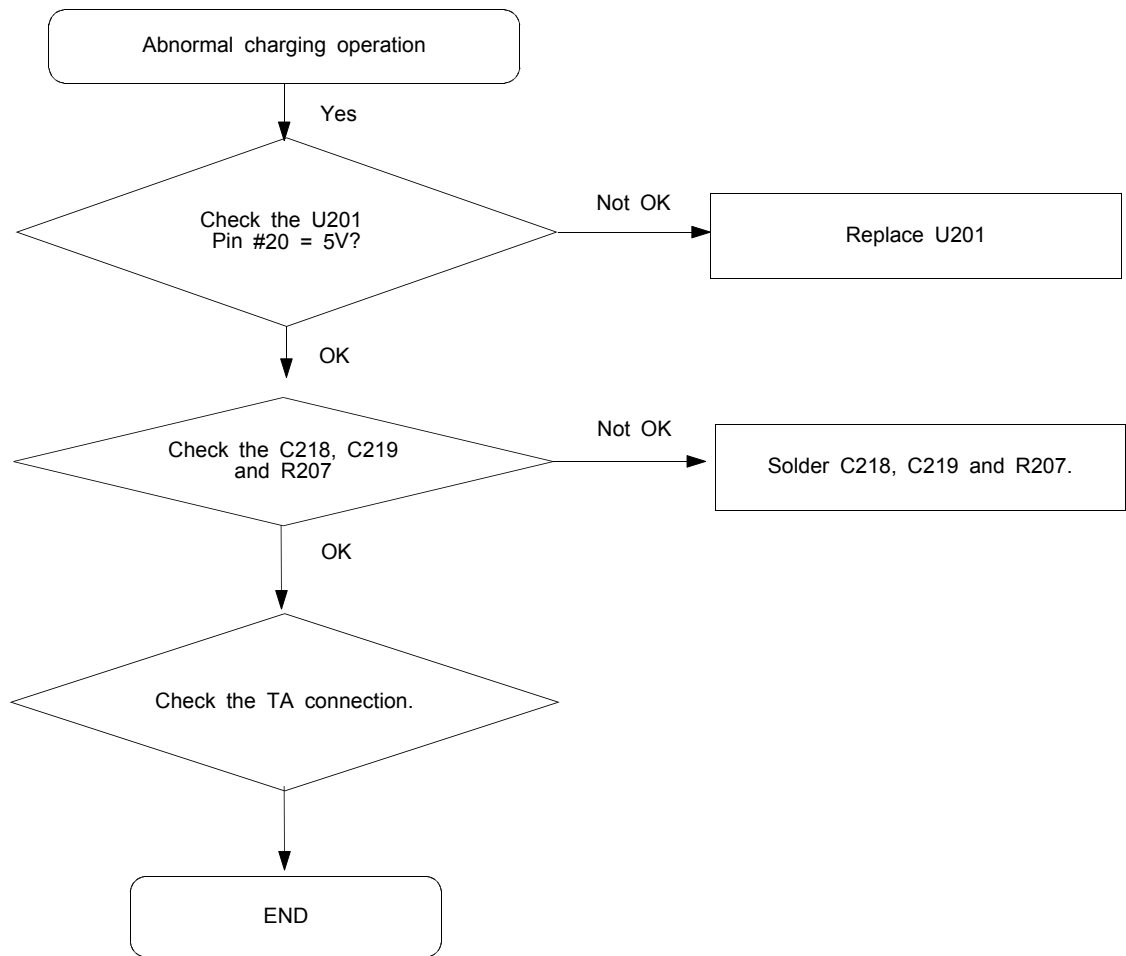


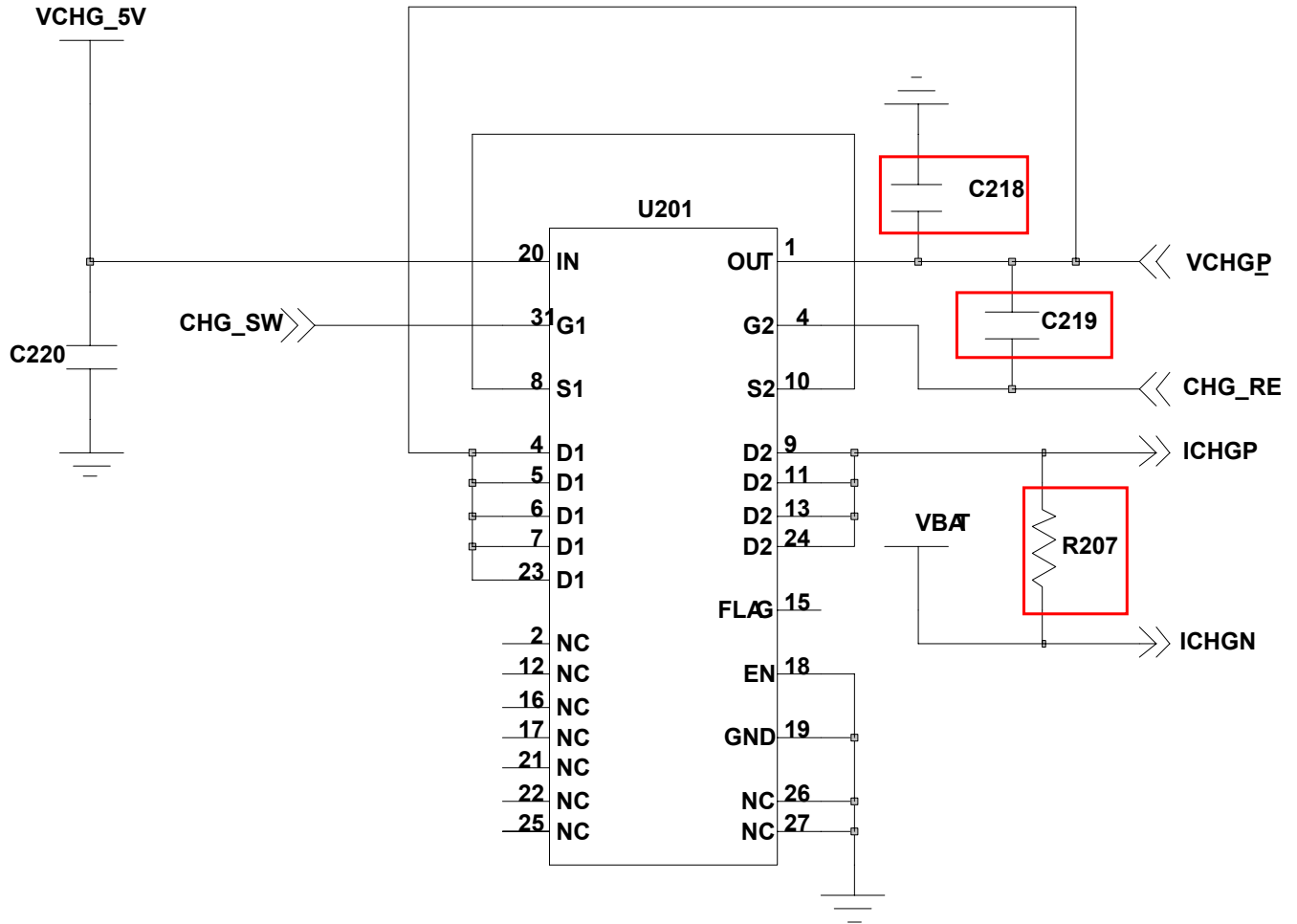
U202

Flow Chart of Troubleshooting

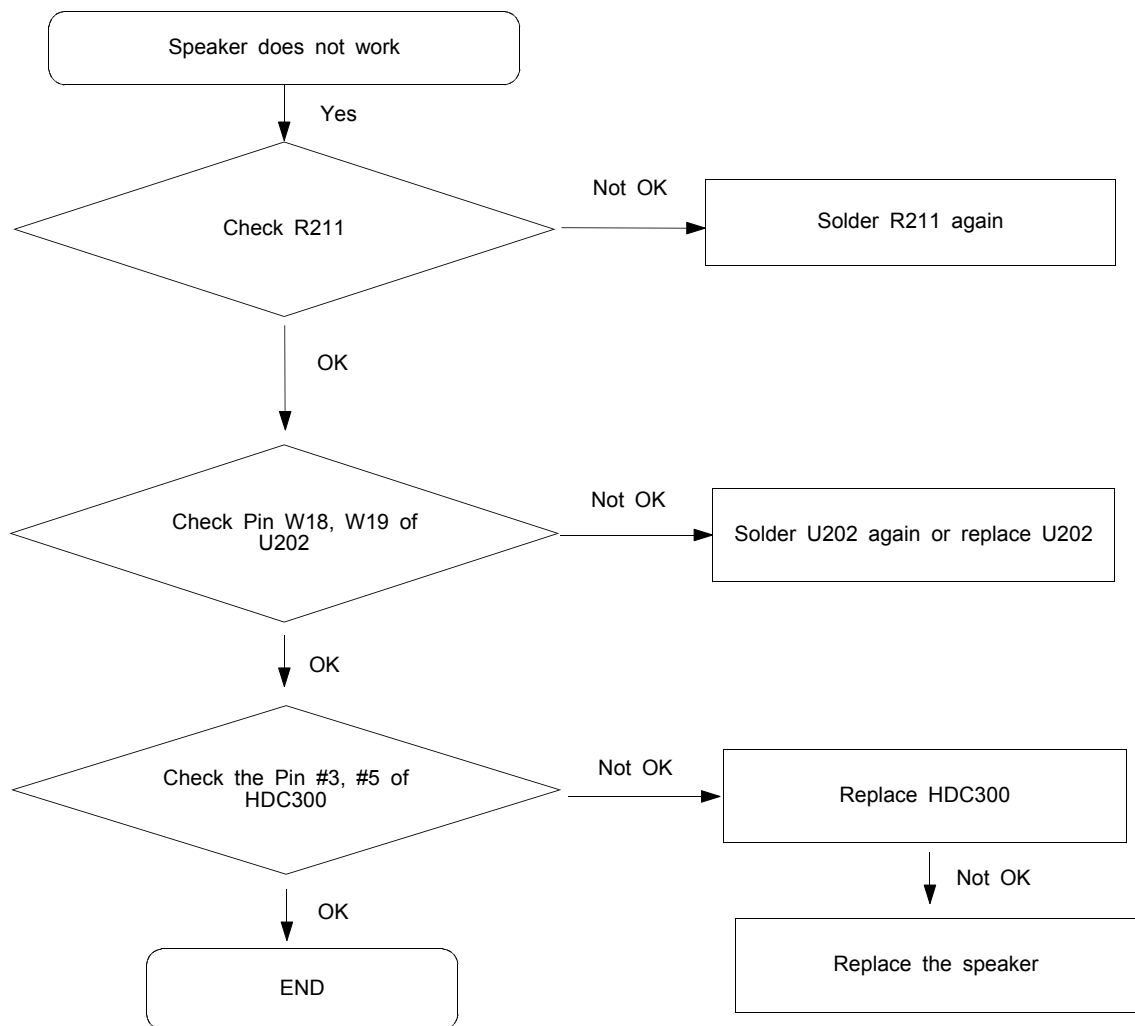


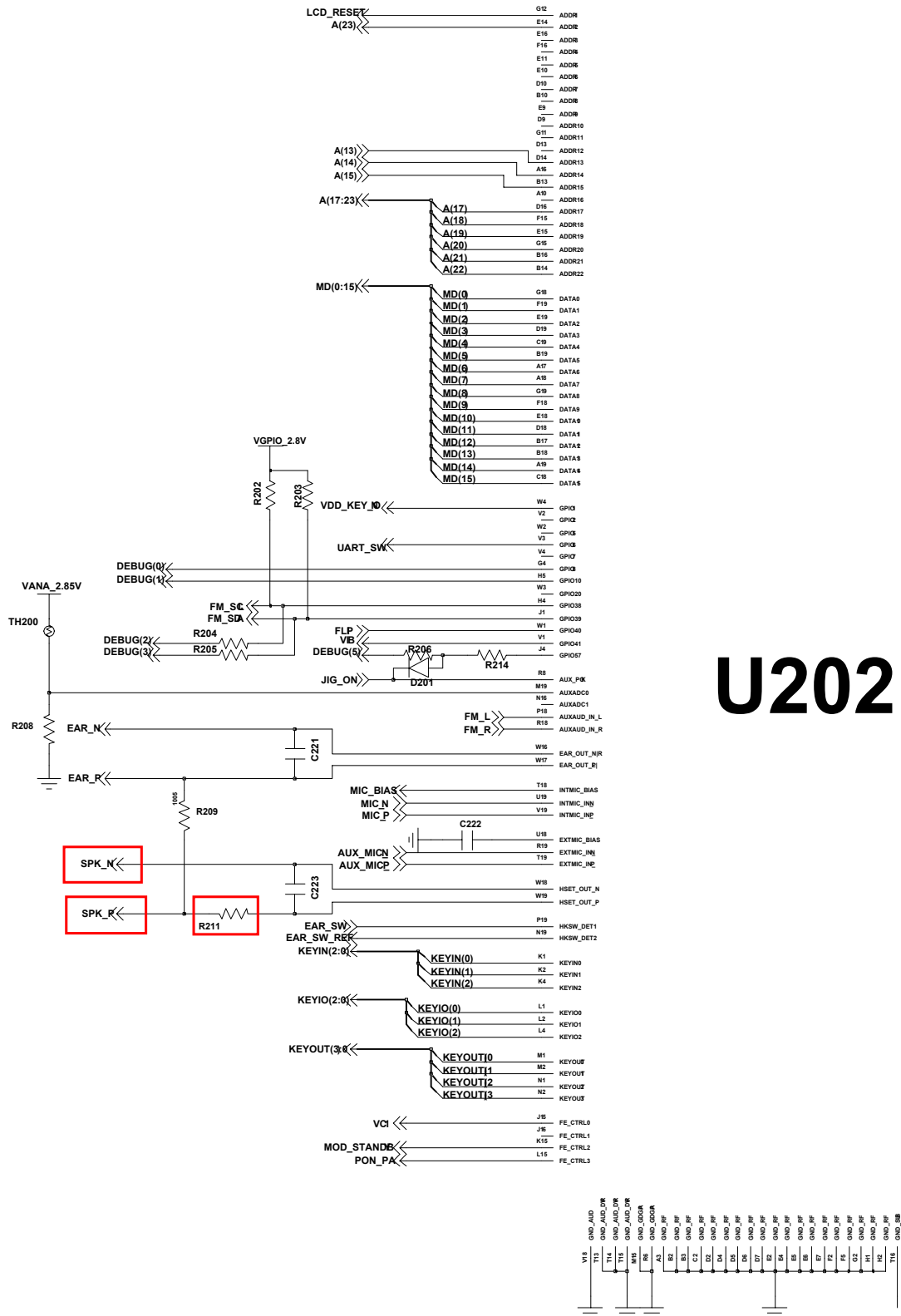
9-6. Charging Part

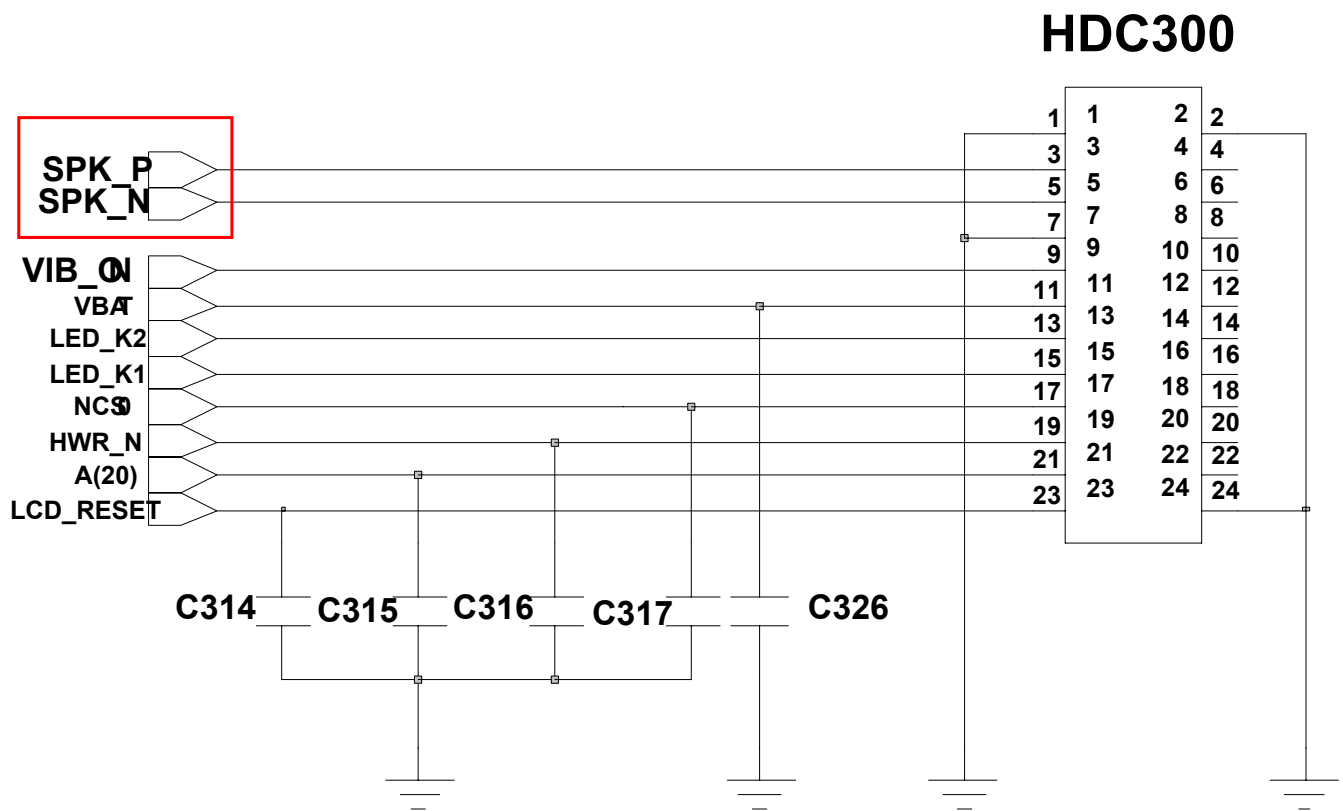




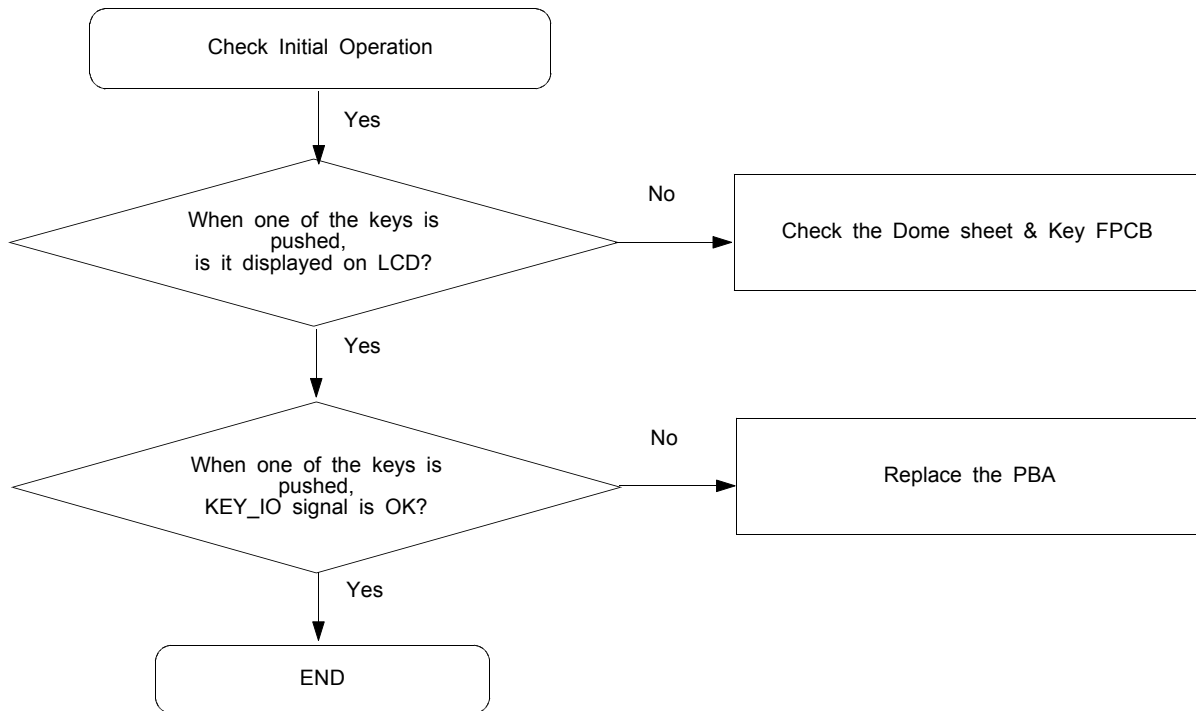
9-7. Speaker Part

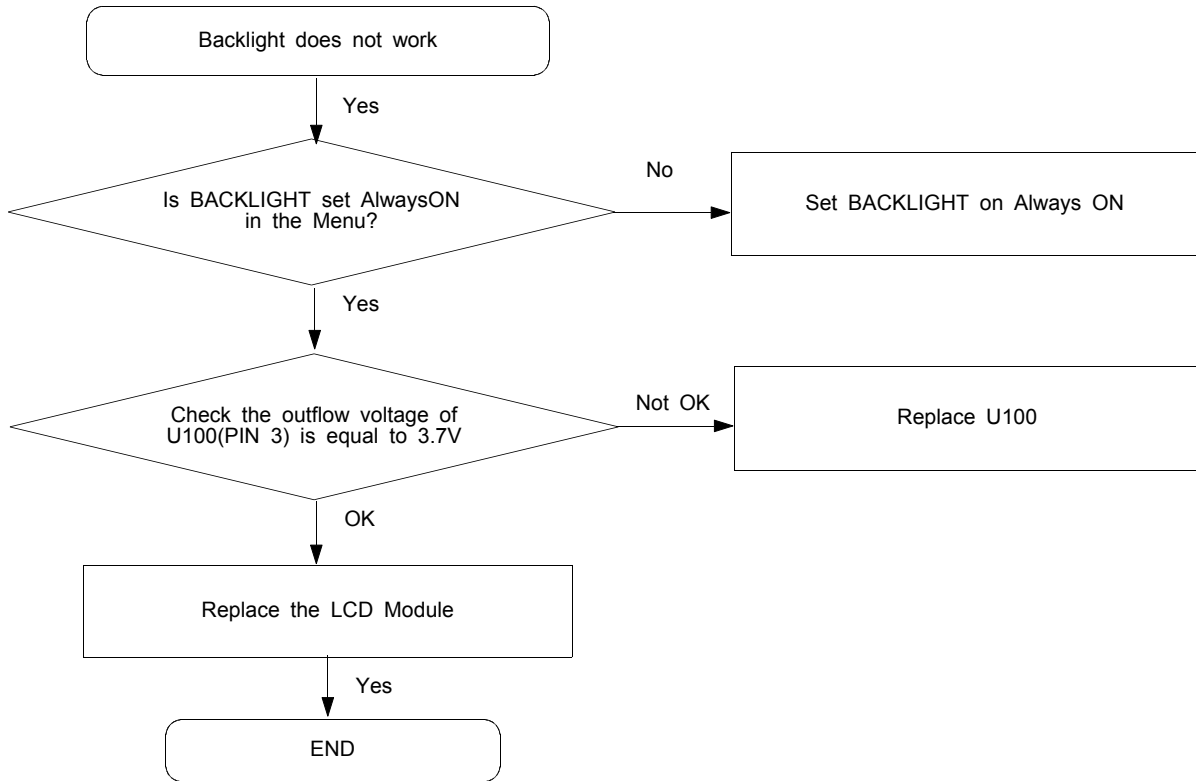


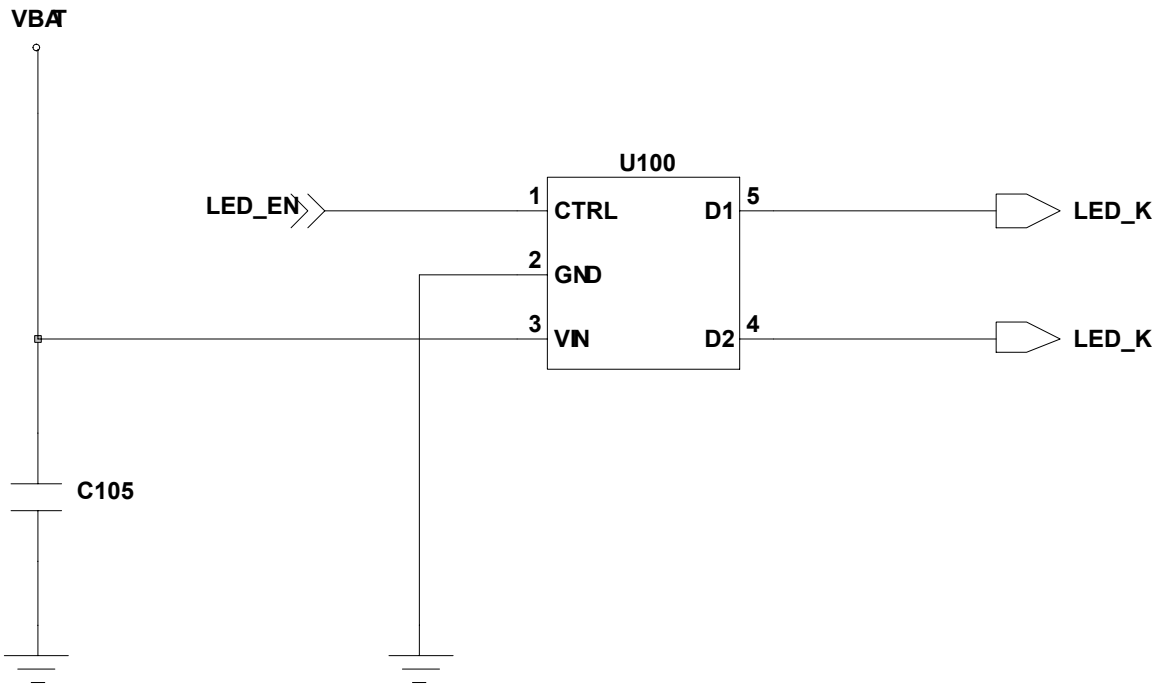




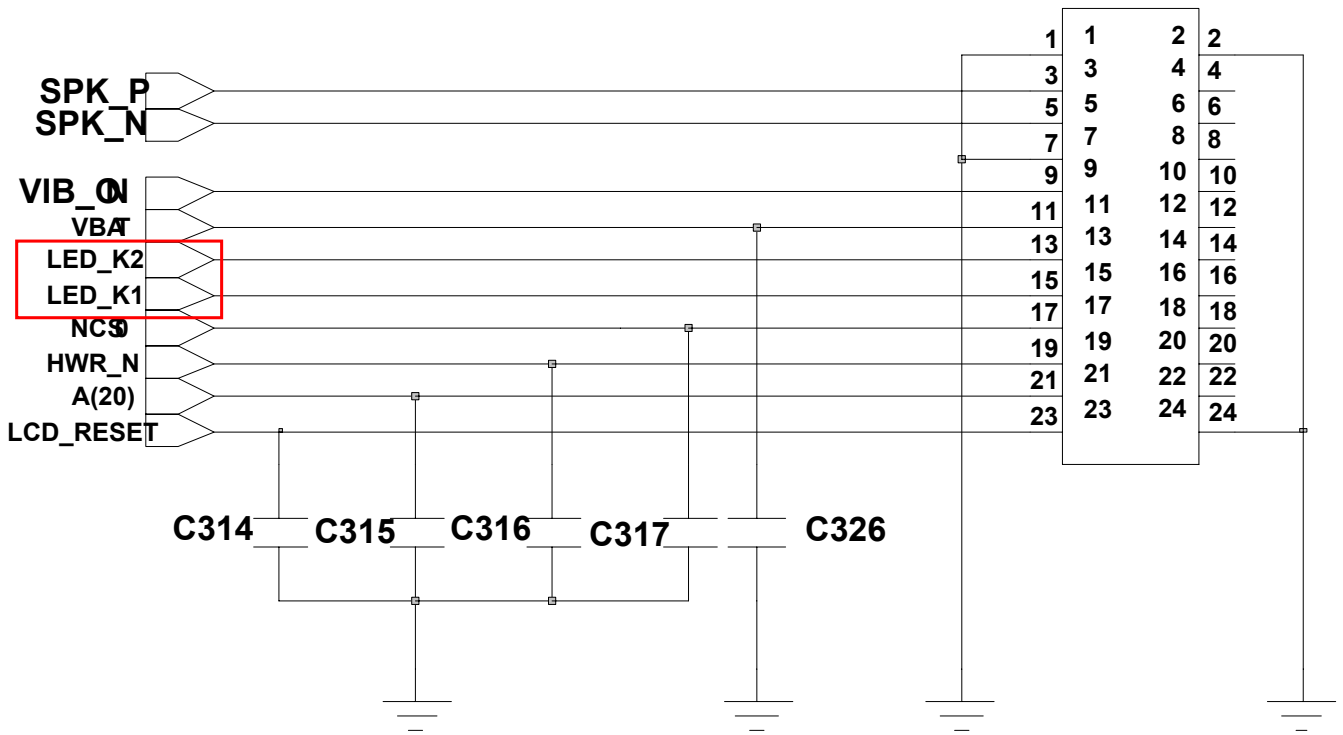
9-8. Key Data Input



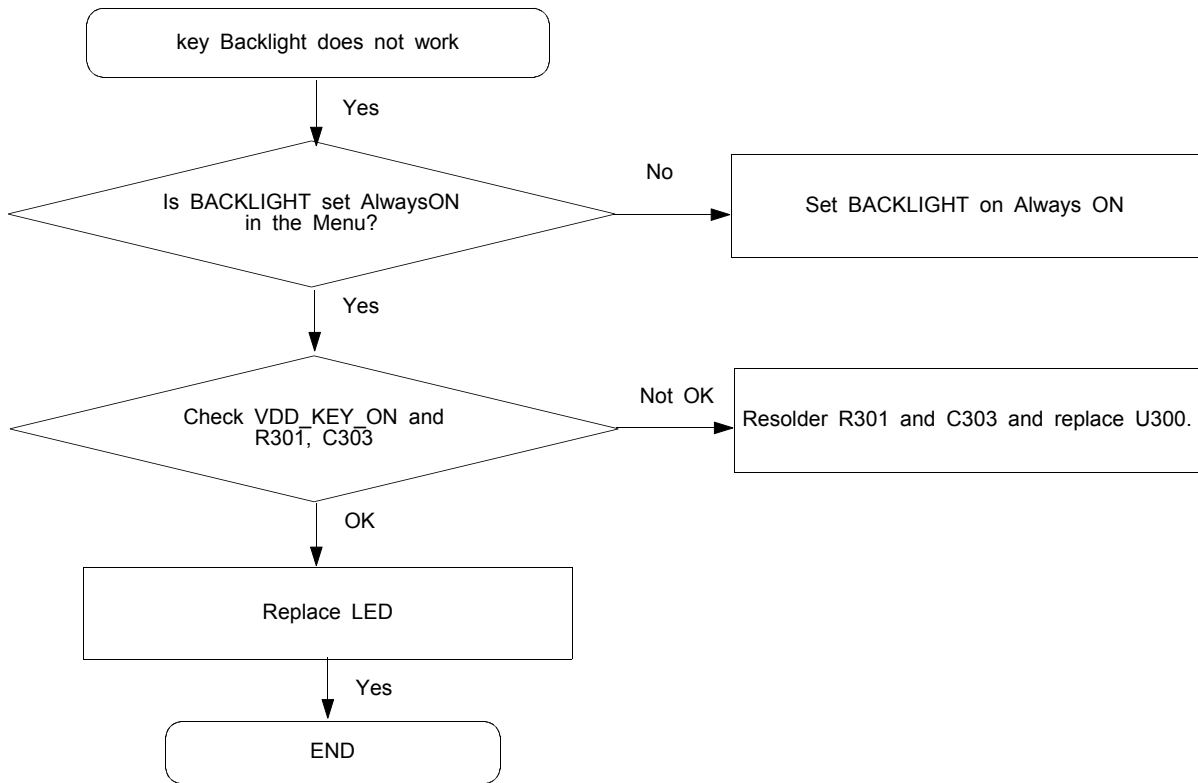
9-9. Back Light (for Color Main LCD)

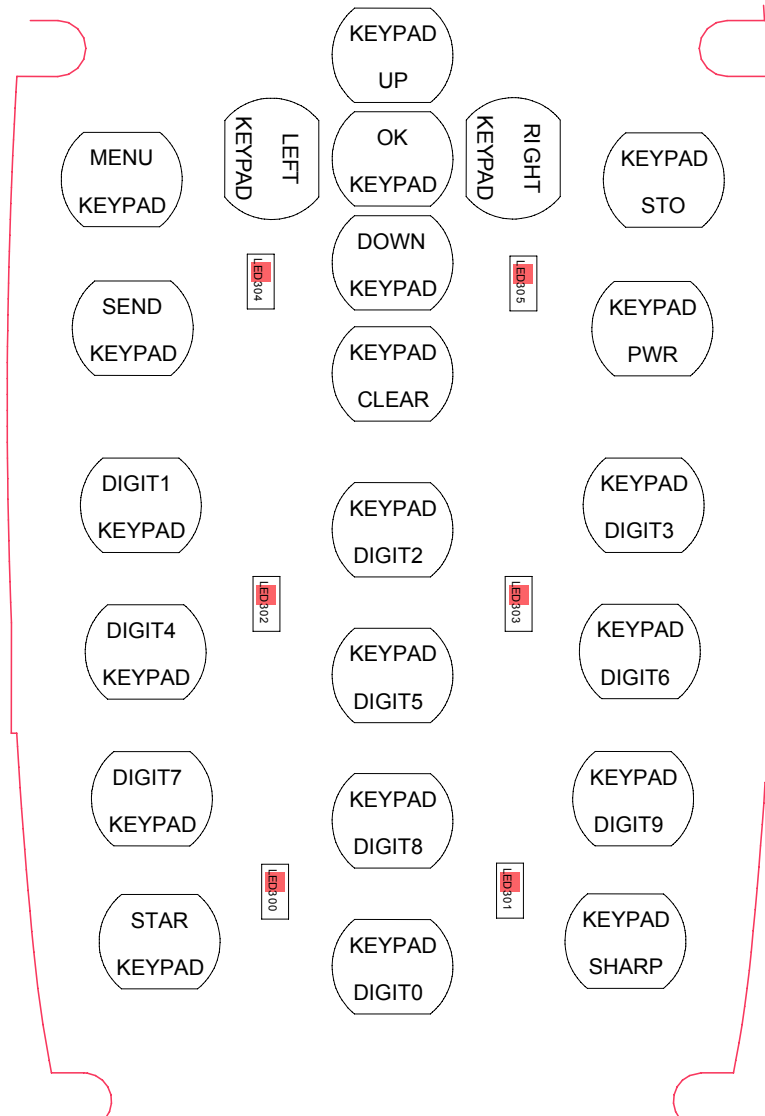
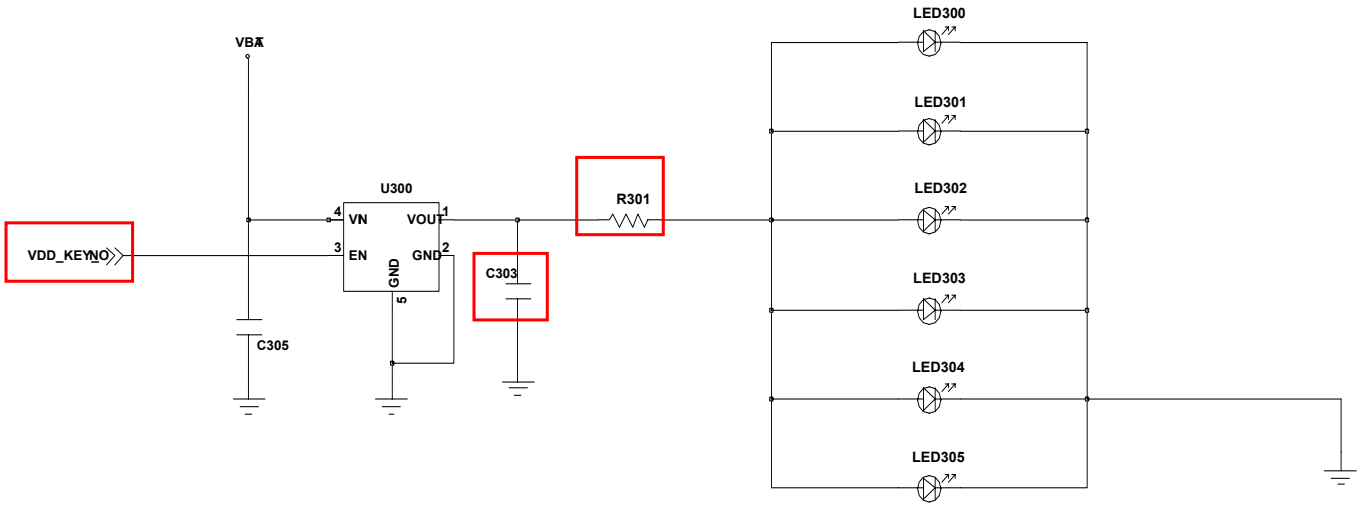


HDC300

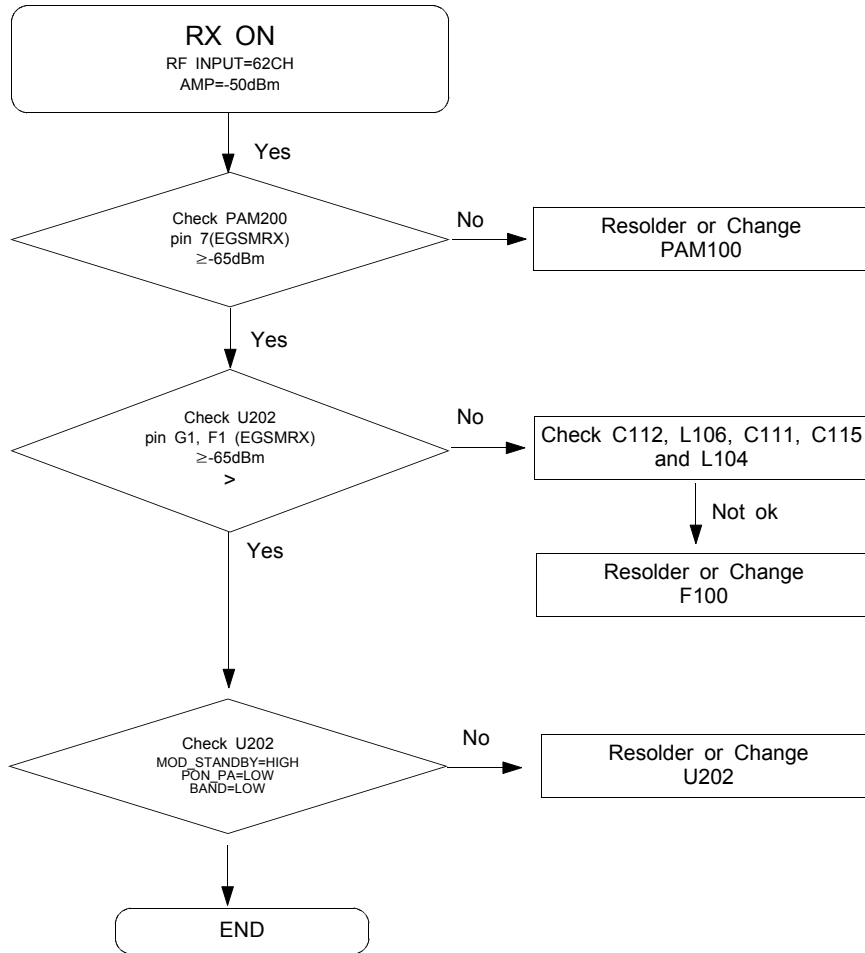


9-10. Key Back Light

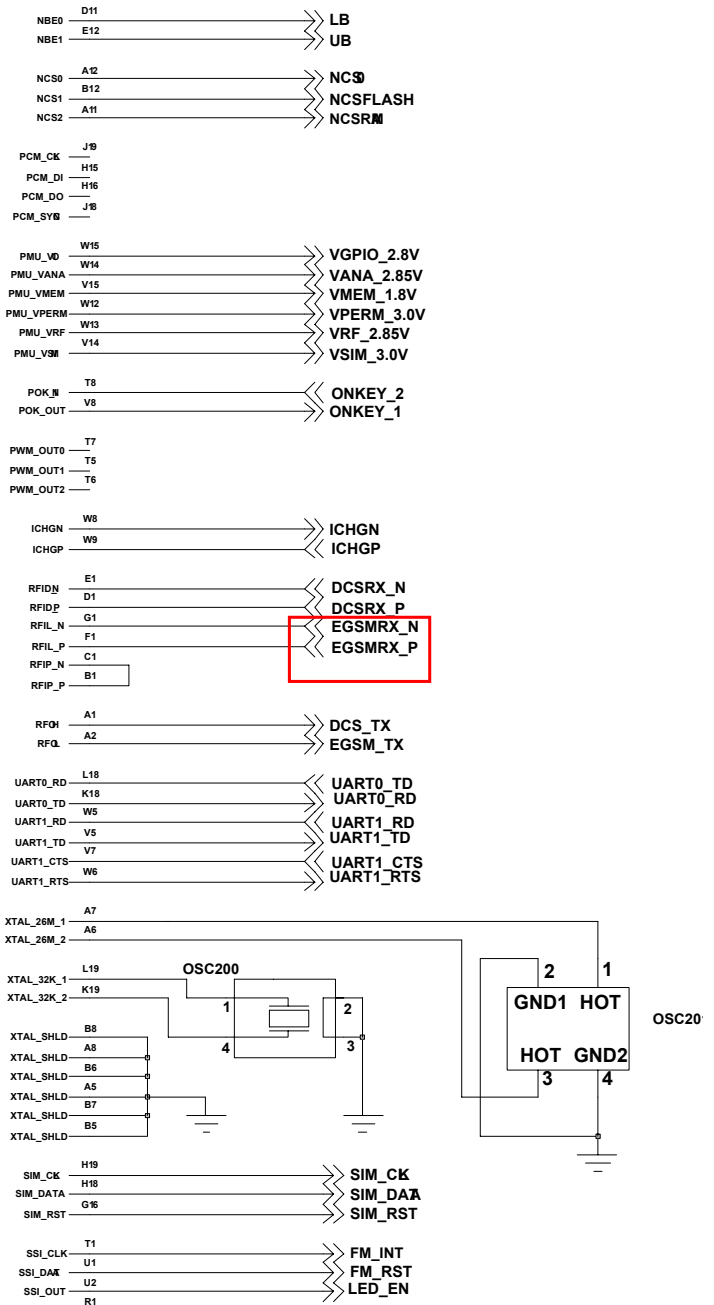


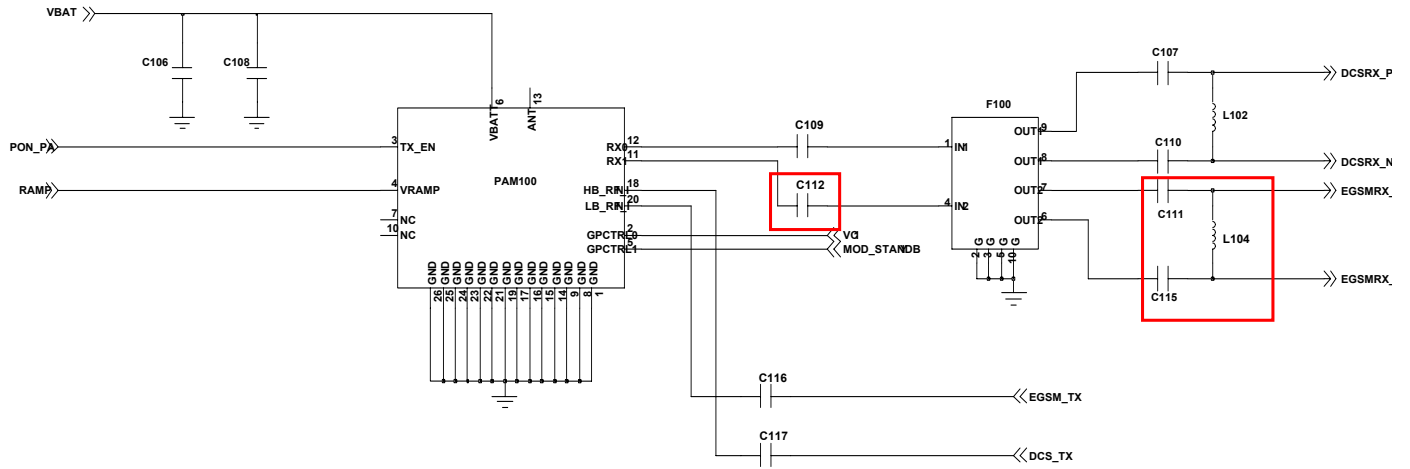


9-11. GSM Receiver

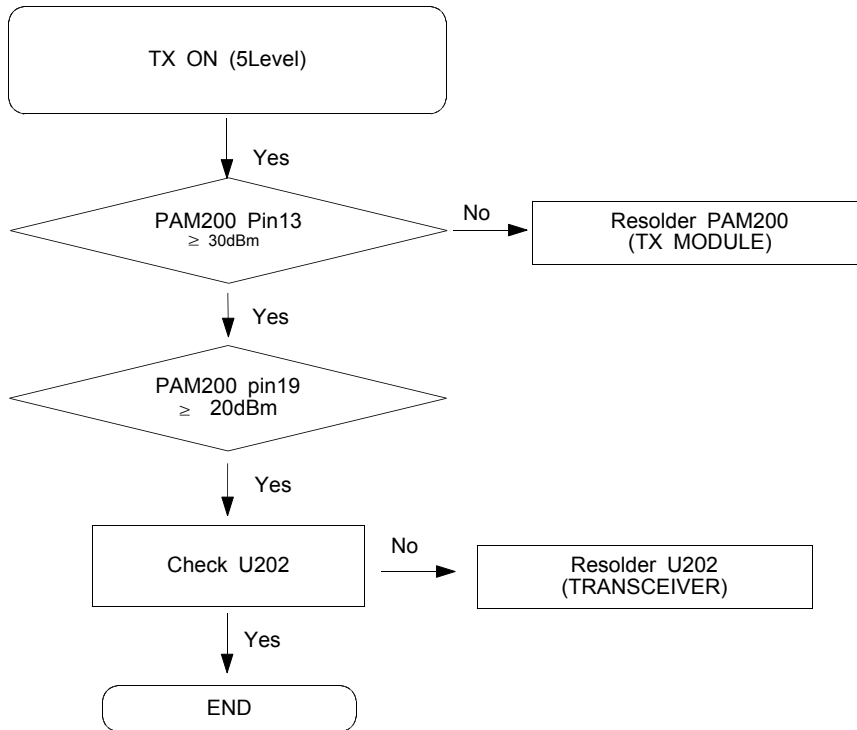


U202

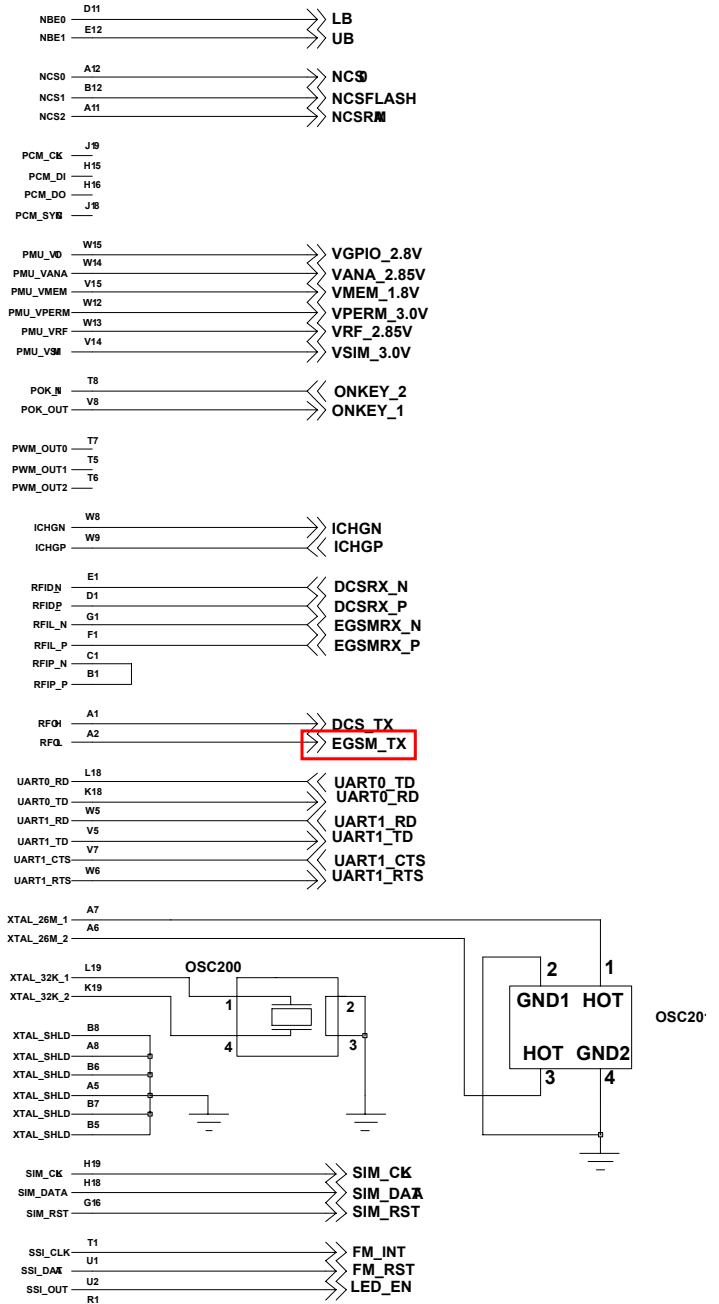




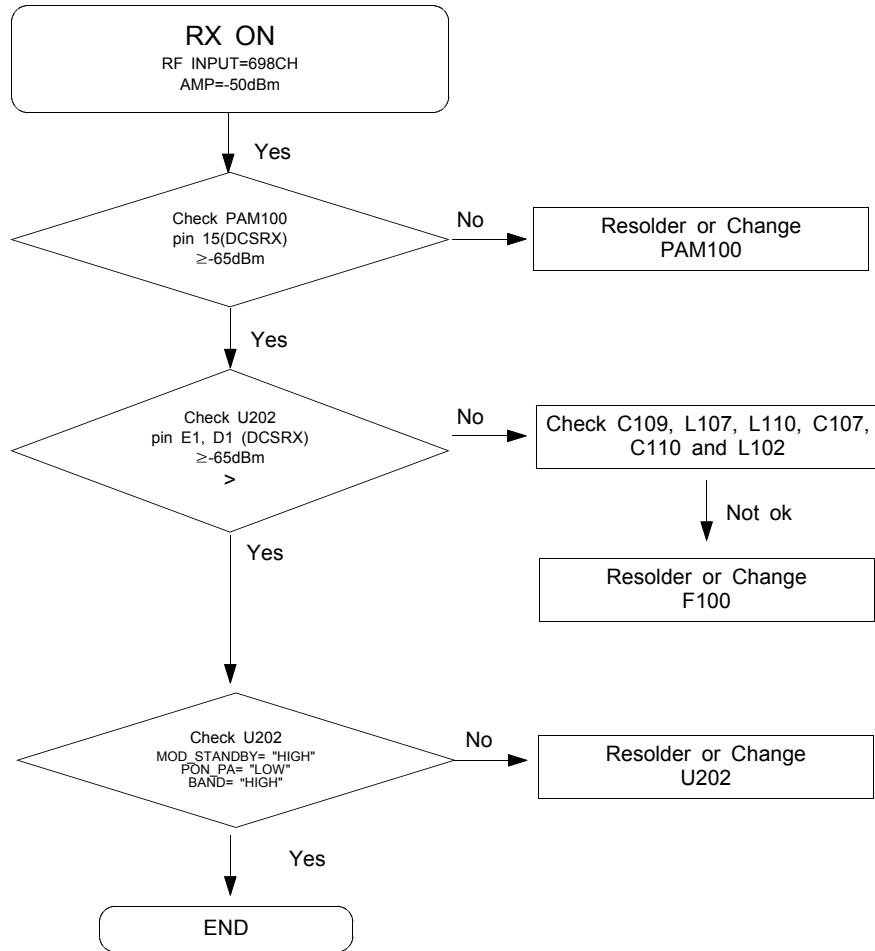
9-12. GSM Transmitter



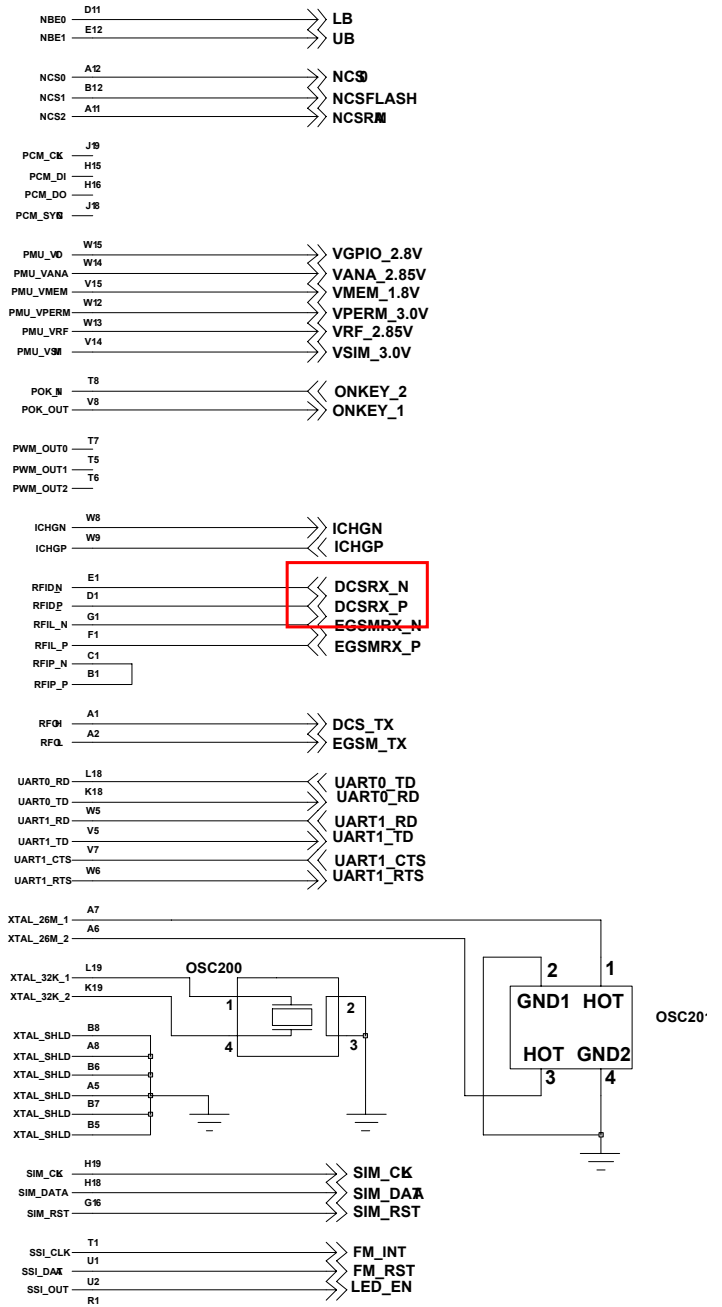
U202

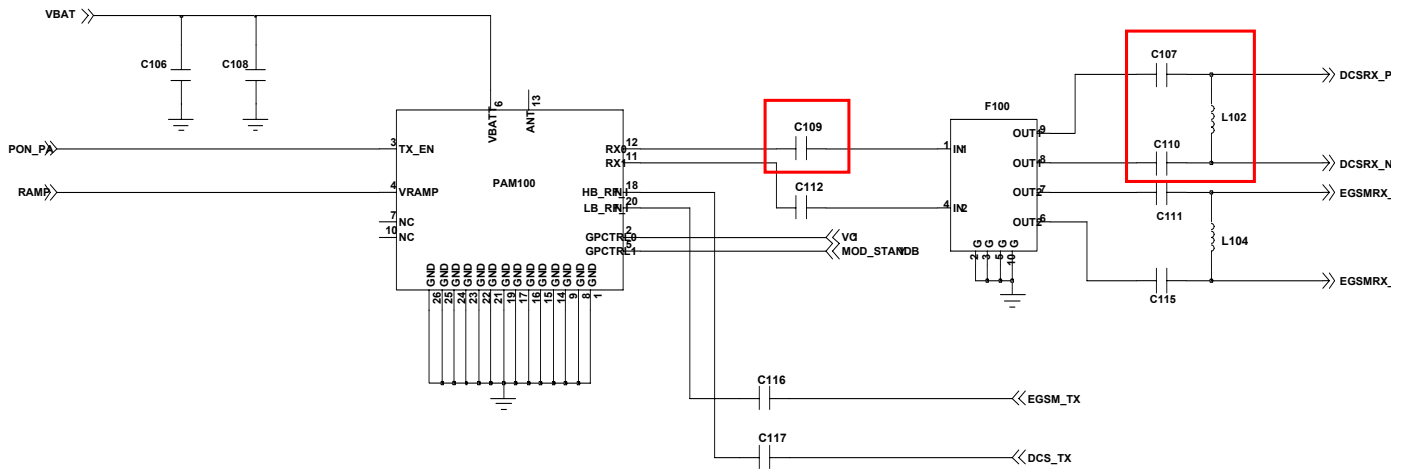


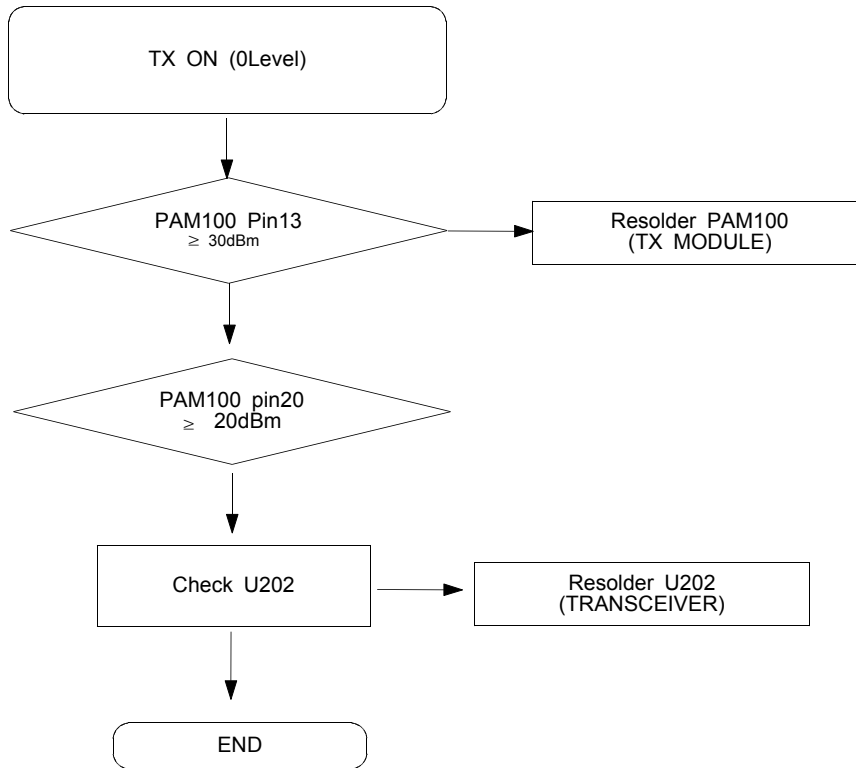
9-13. DCS Receiver



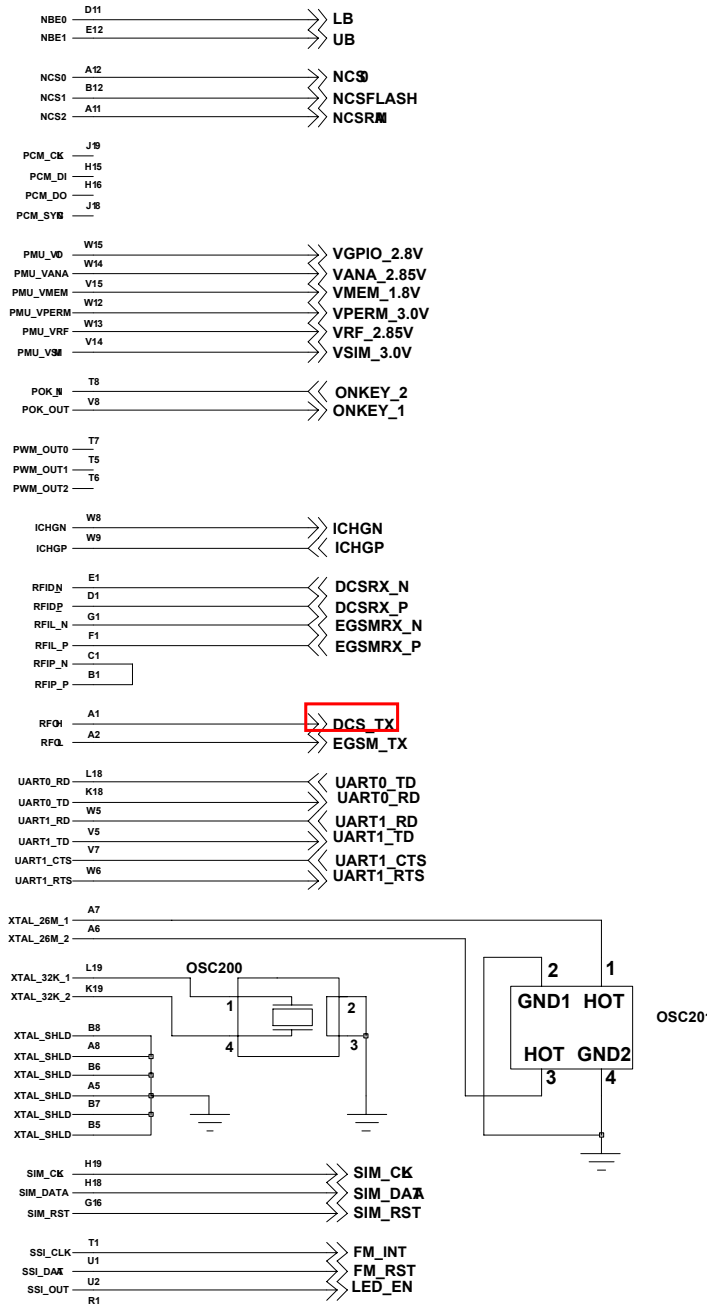
U202





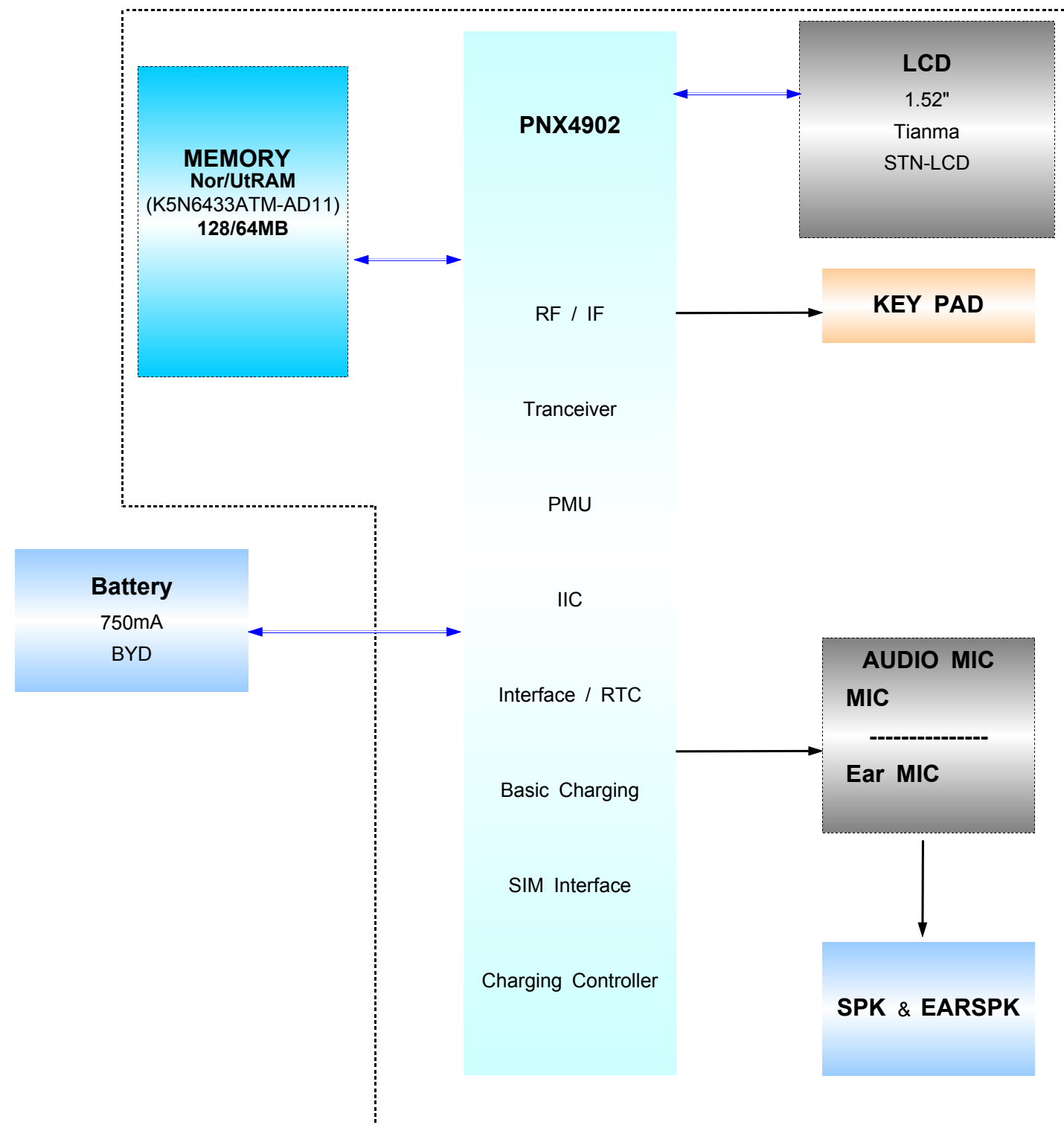
9-14. DCS Transmitter

U202



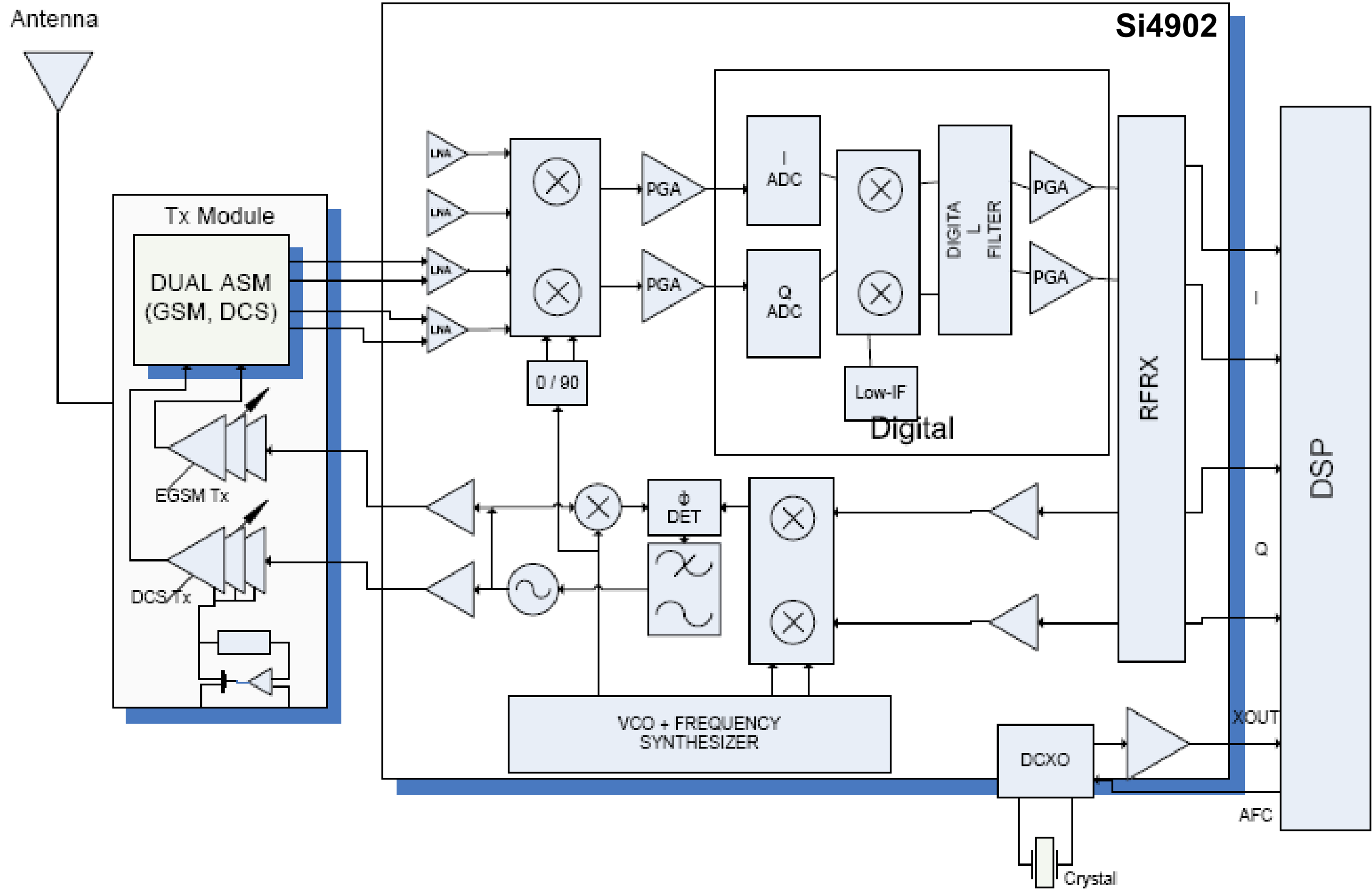
7. Block Diagrams

7-1. Main Block Diagram



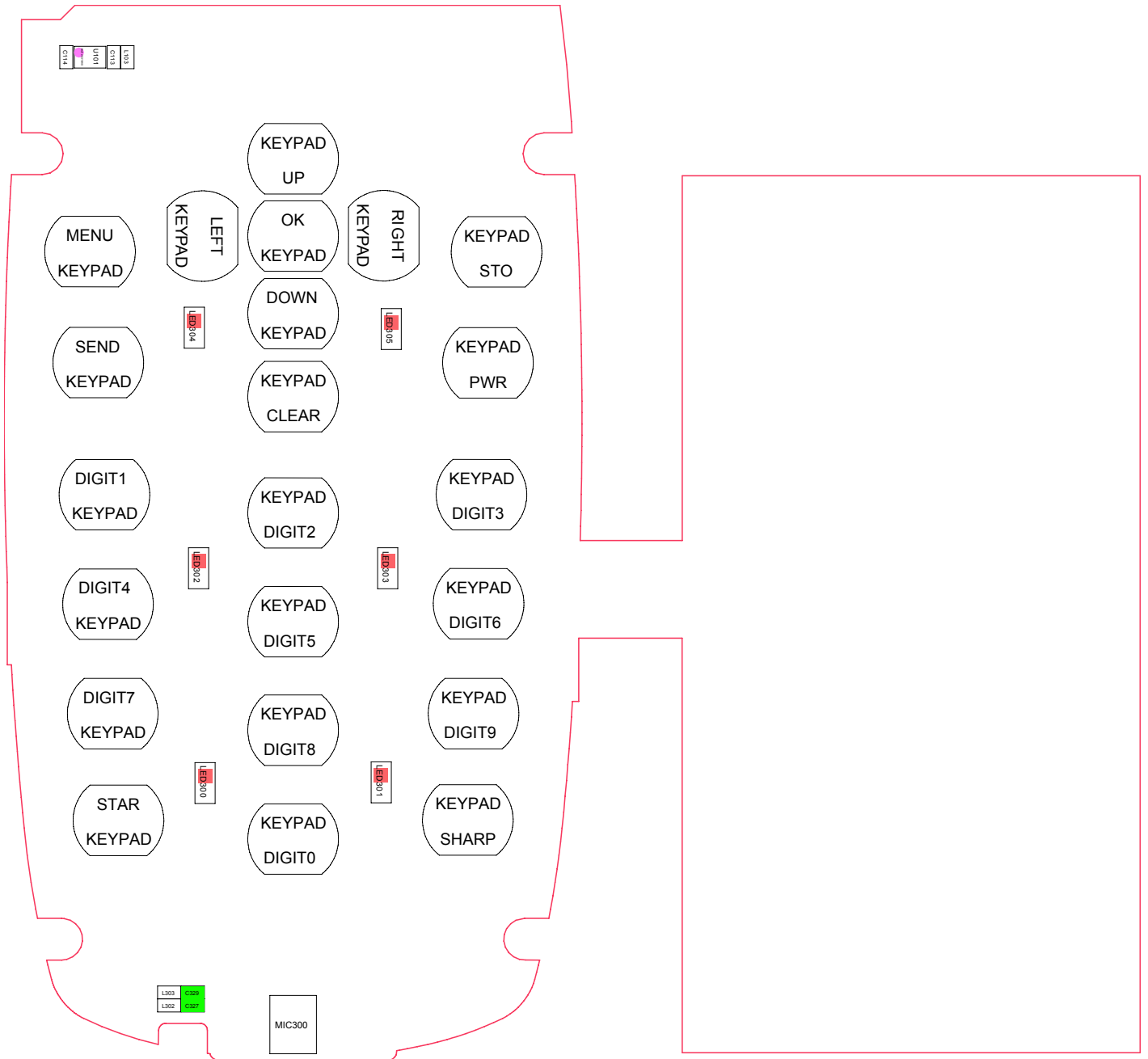
7-2. RF Solution Block Diagram

C270 RF Block Diagram



8. PCB Diagrams

Top



Bottom

