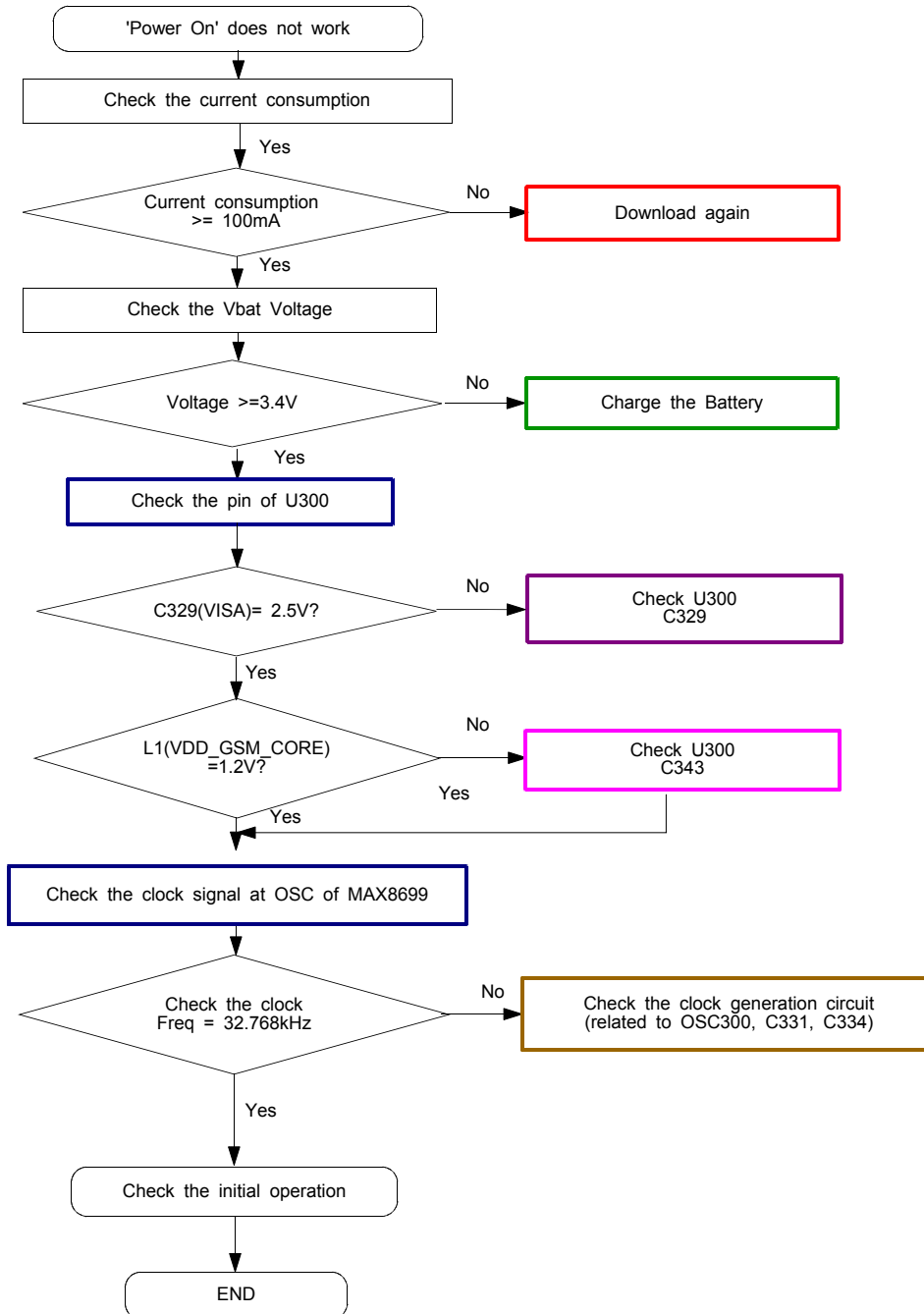
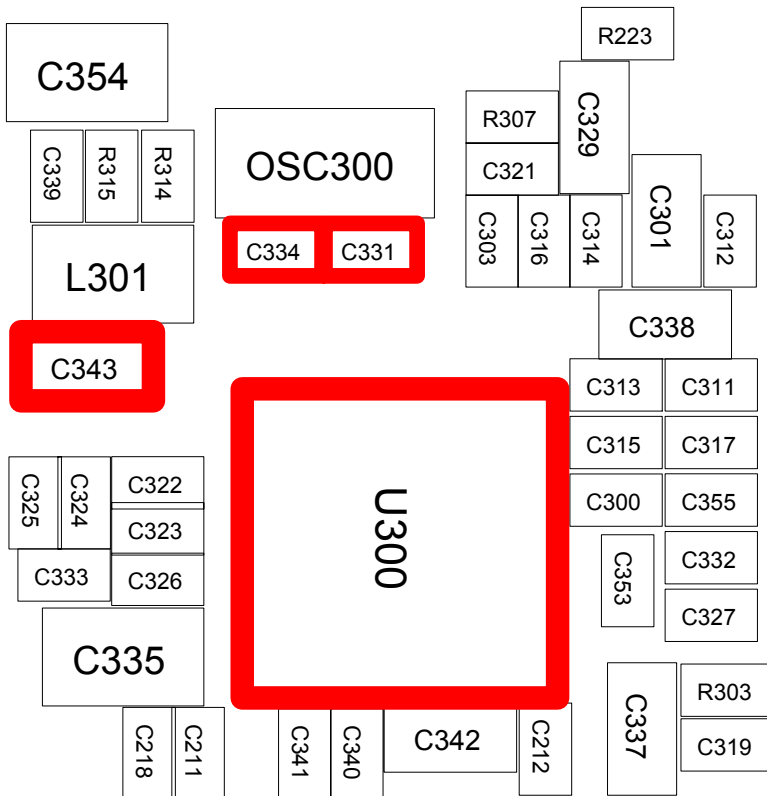
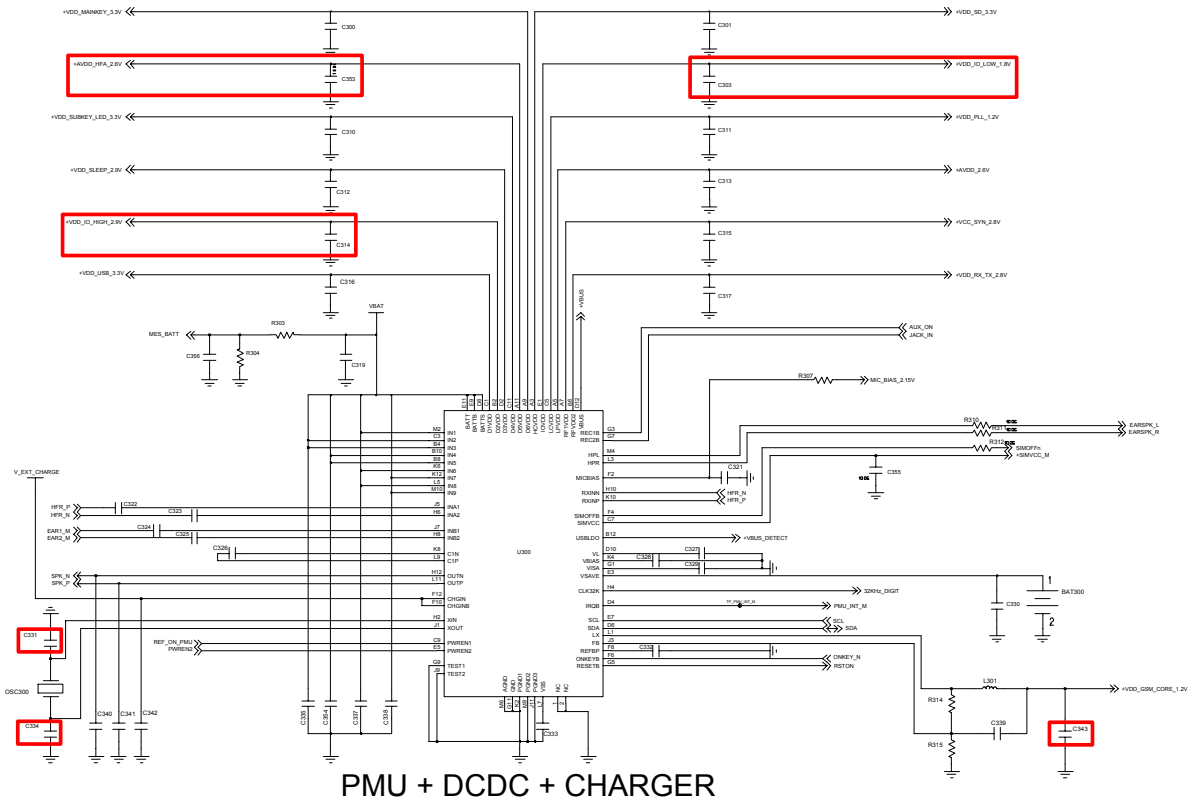


# 10. Flow Chart of Troubleshooting

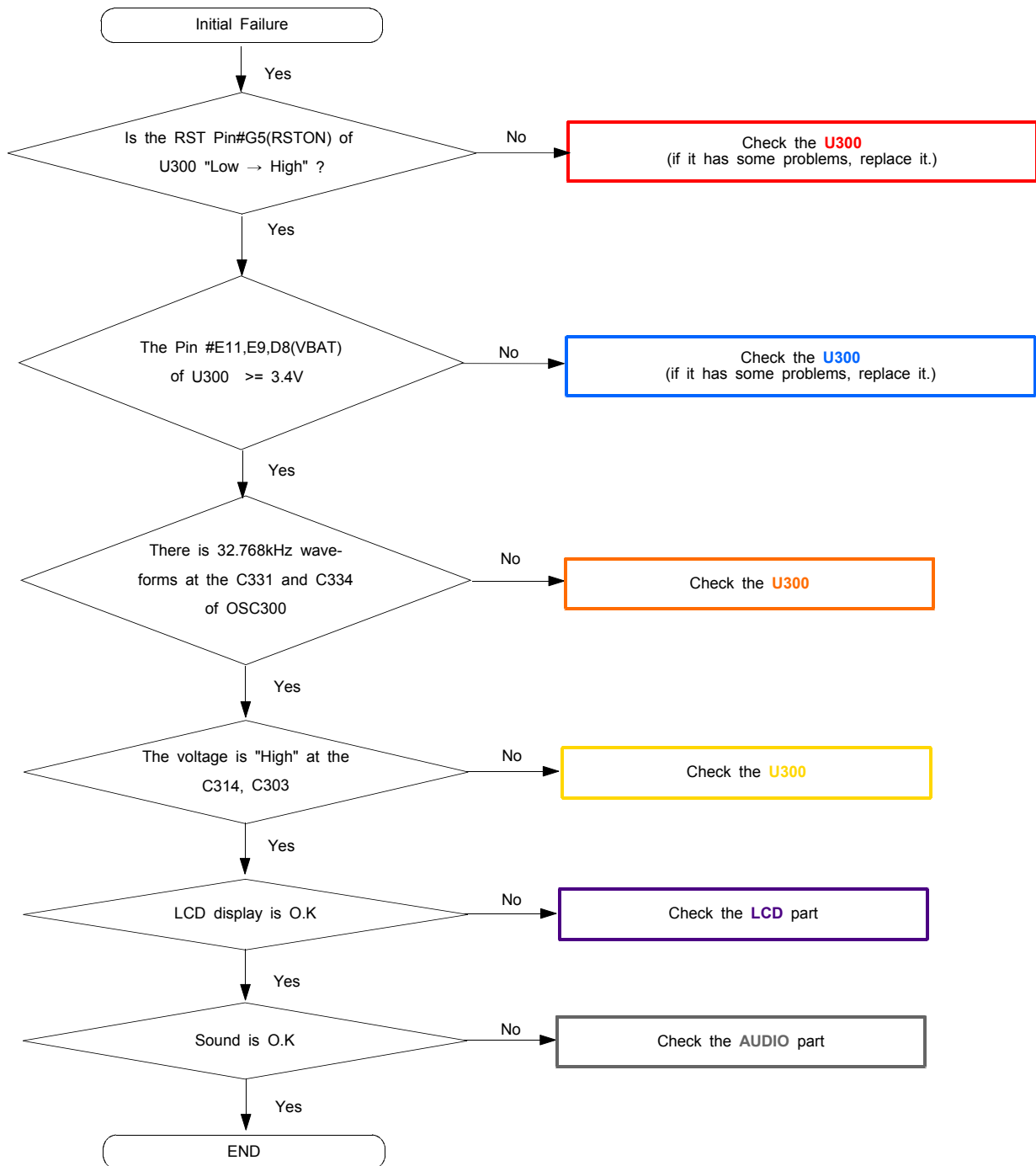
## 10-1. Baseband

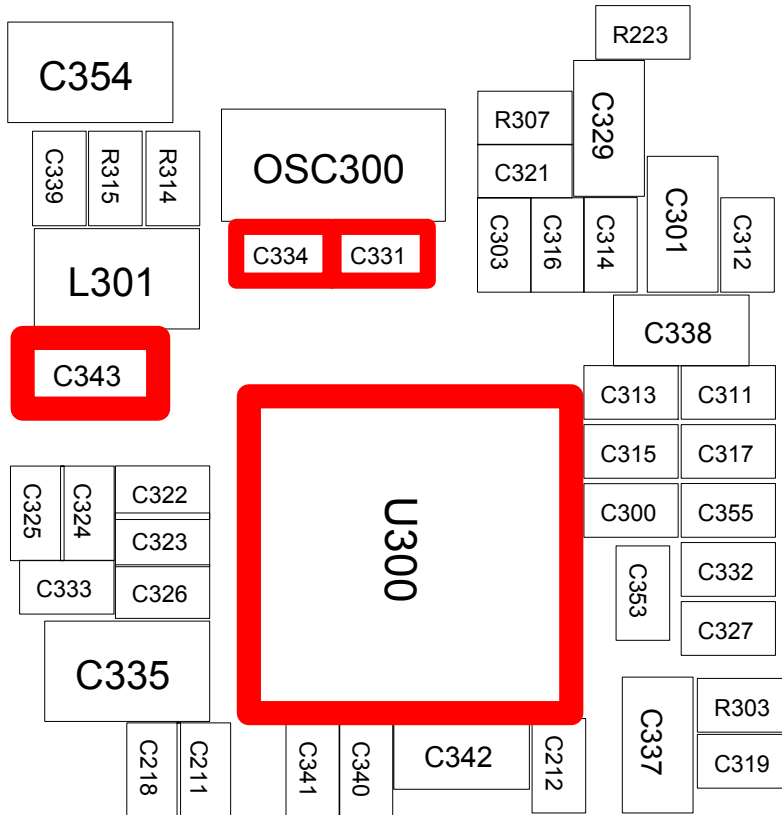
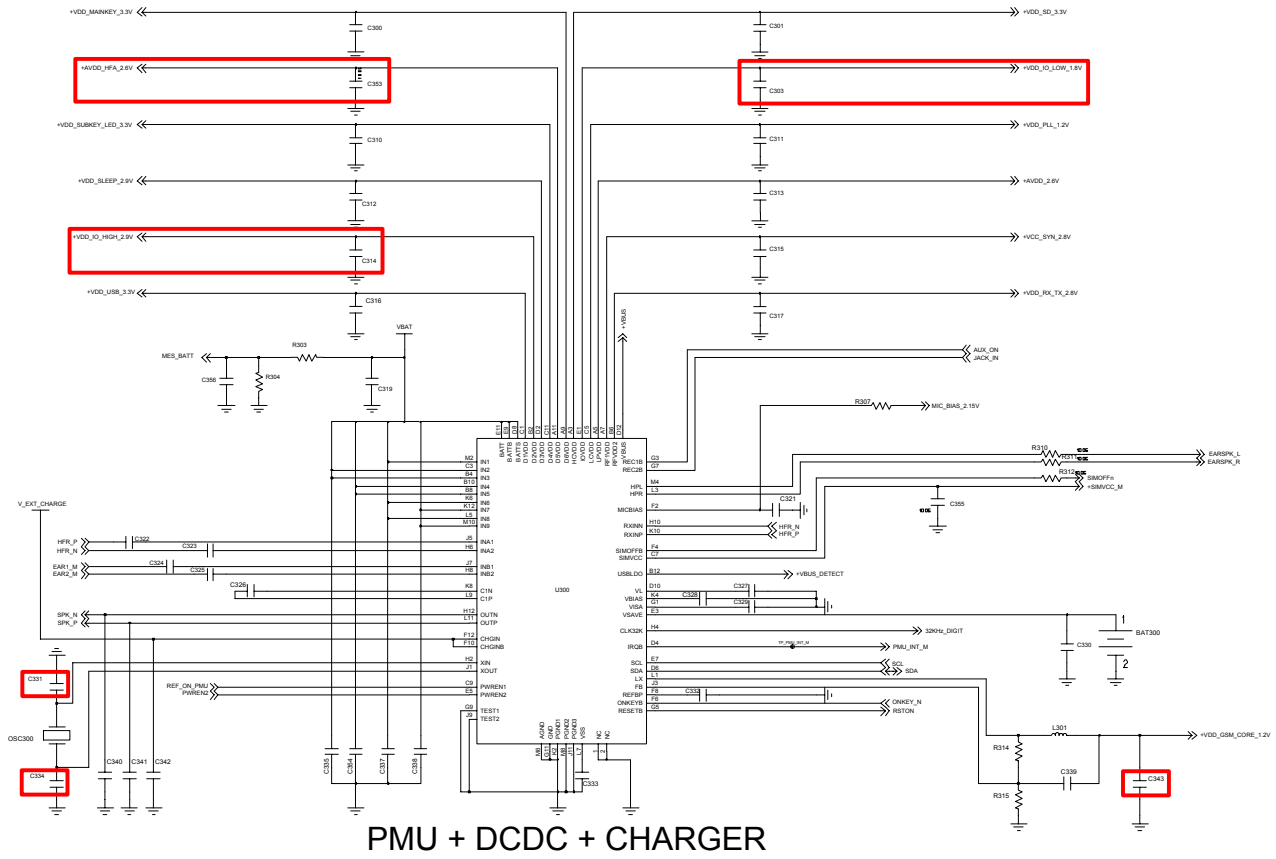
### 10-1-1. Power ON





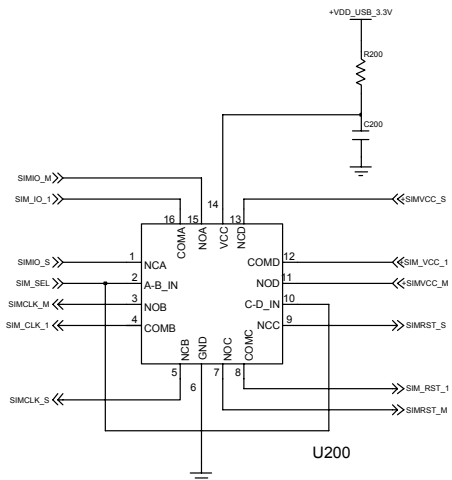
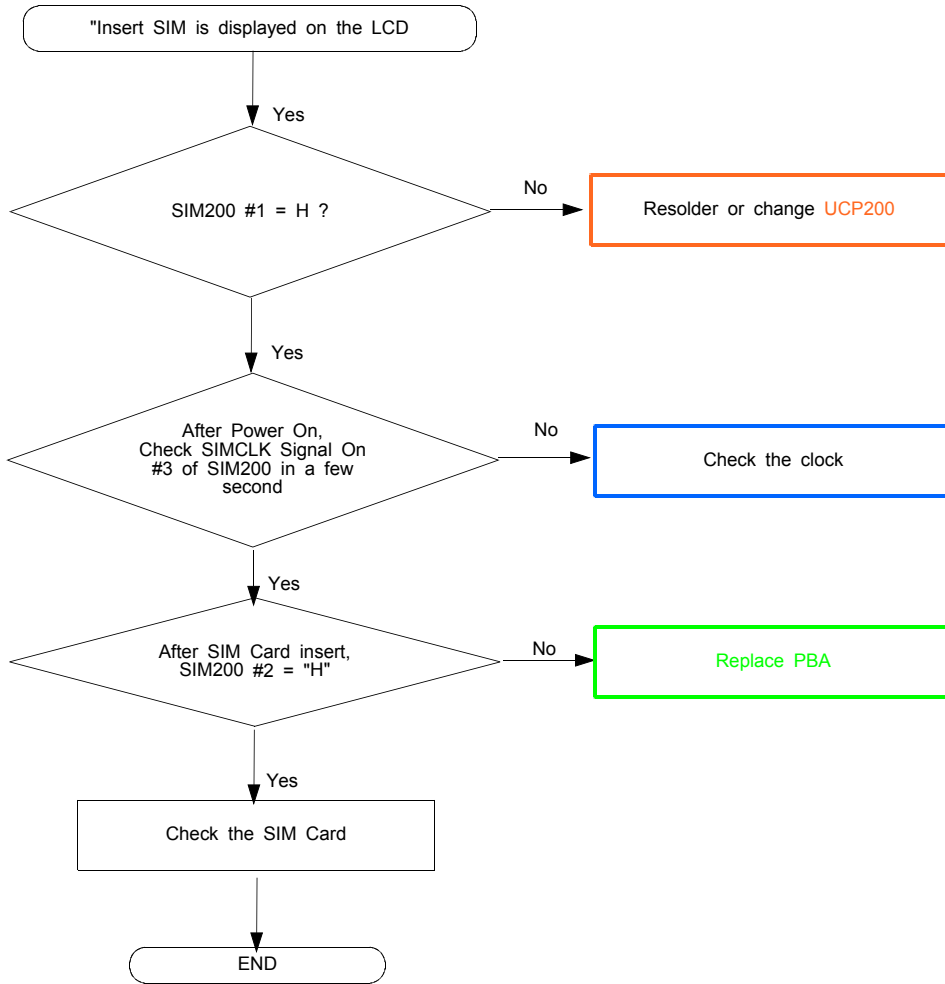
10-1-2. Initial



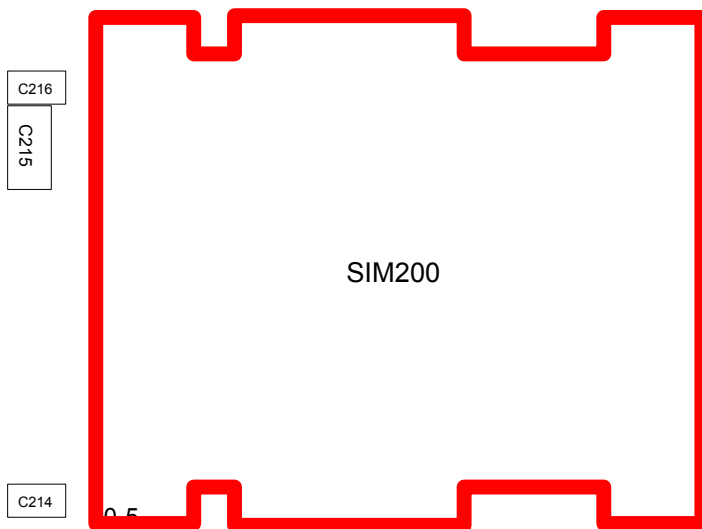


10-1-3. Sim Part

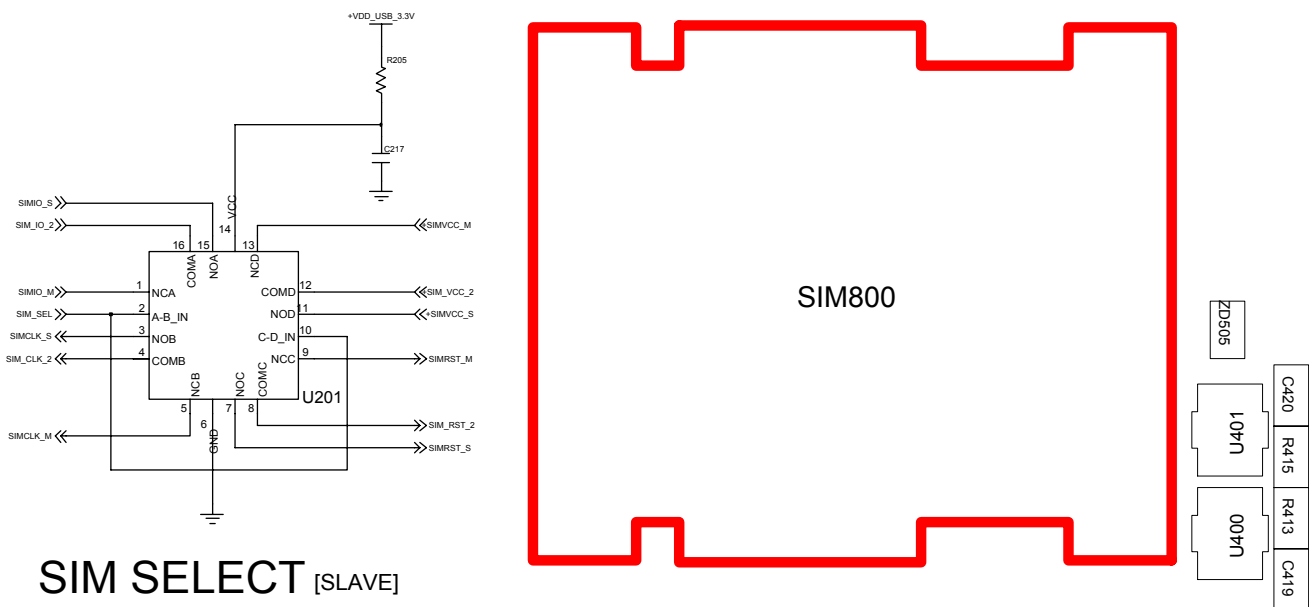
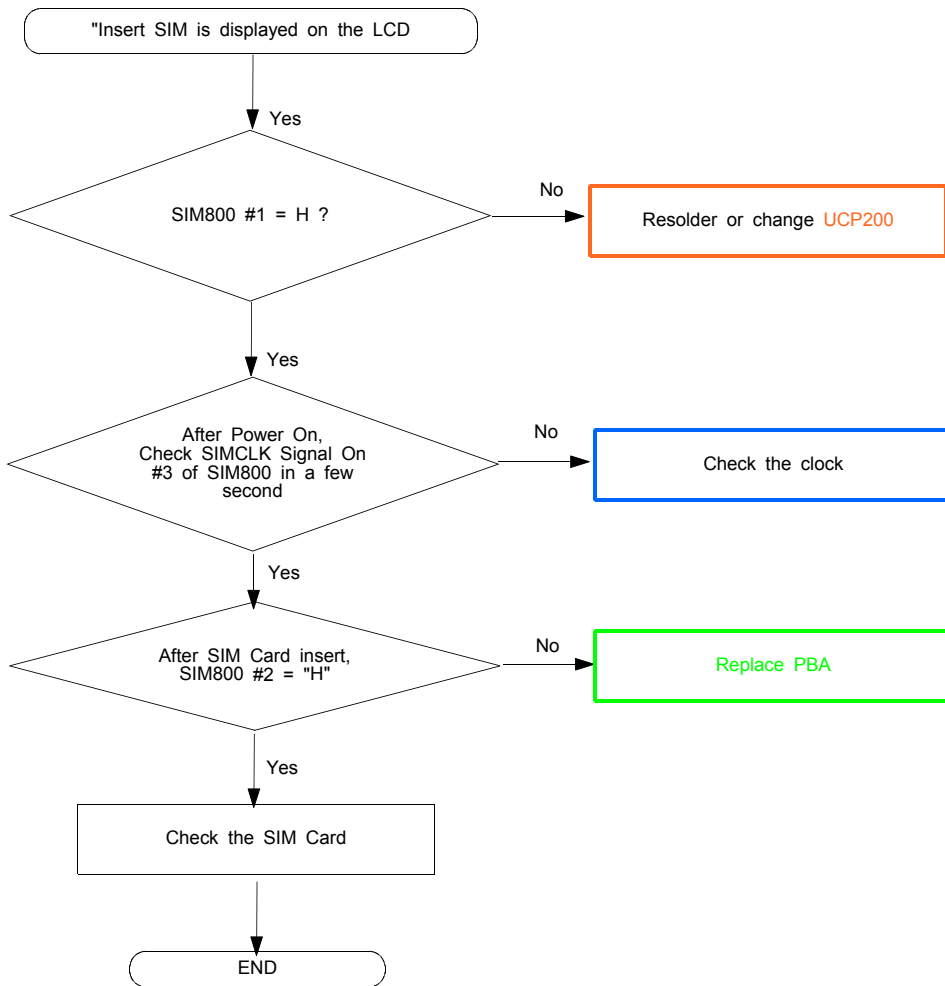
(1) MASTER

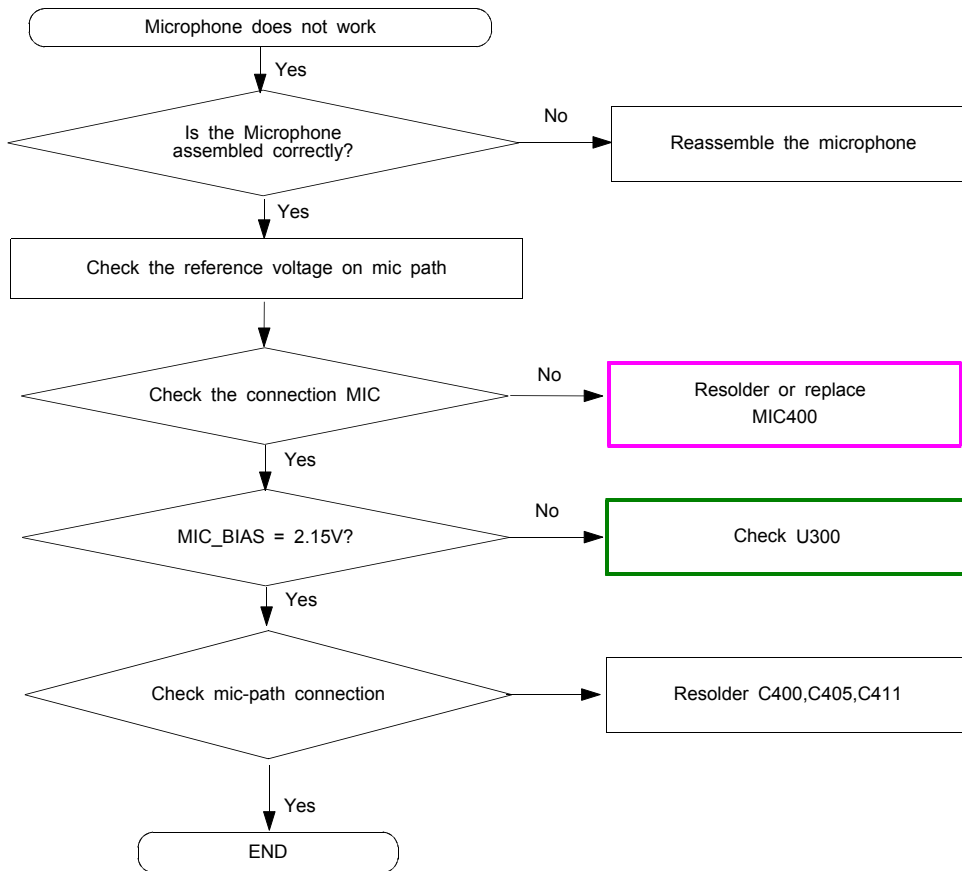


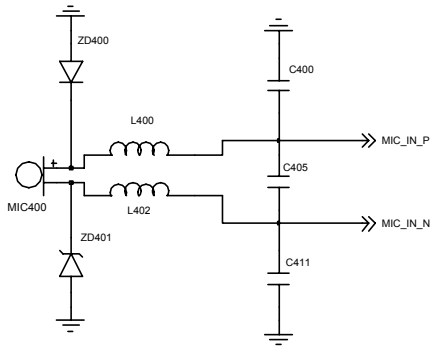
SIM SELECT [MASTER]



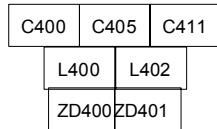
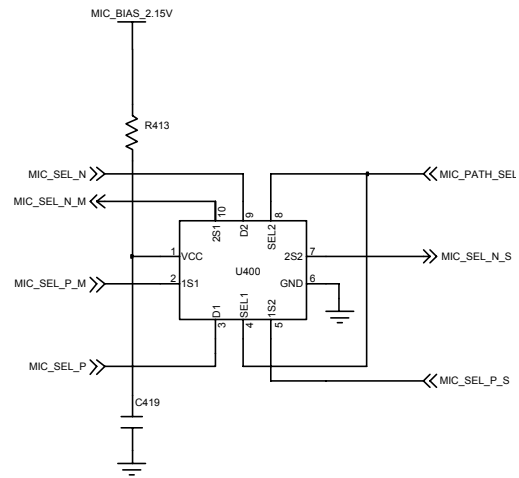
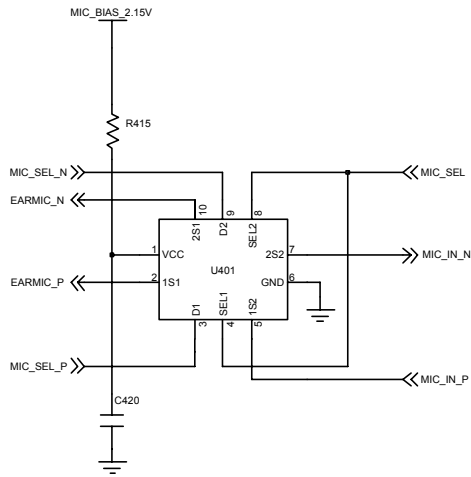
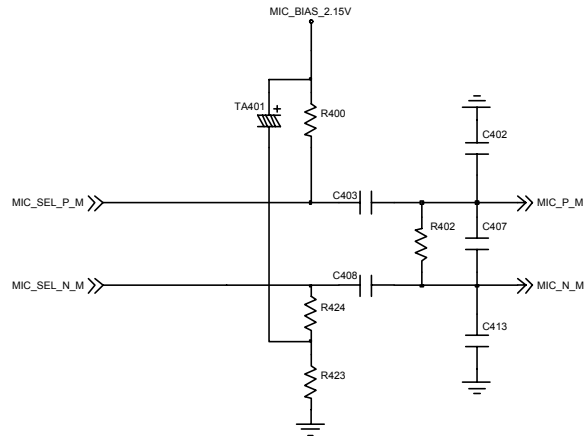
**(2) SLAVE**



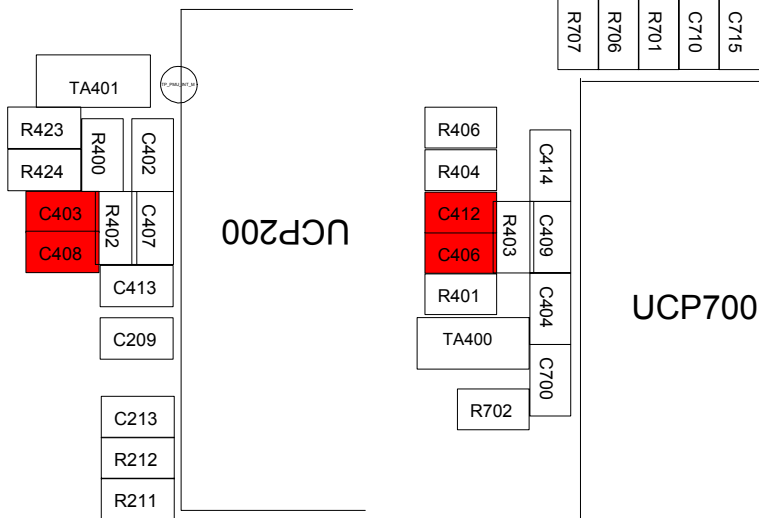
**10-1-4. Microphone Part**



# MICROPHONE



MIC400

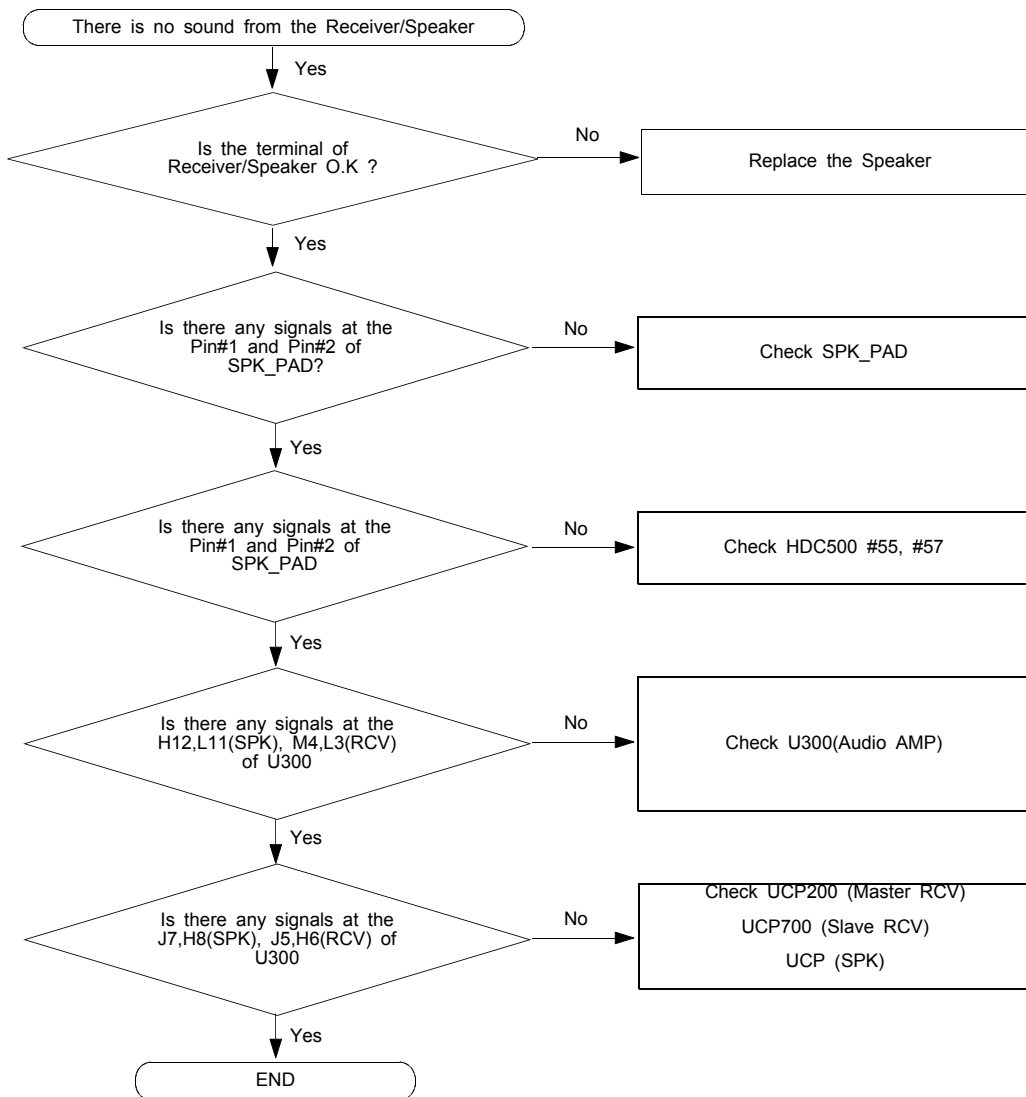


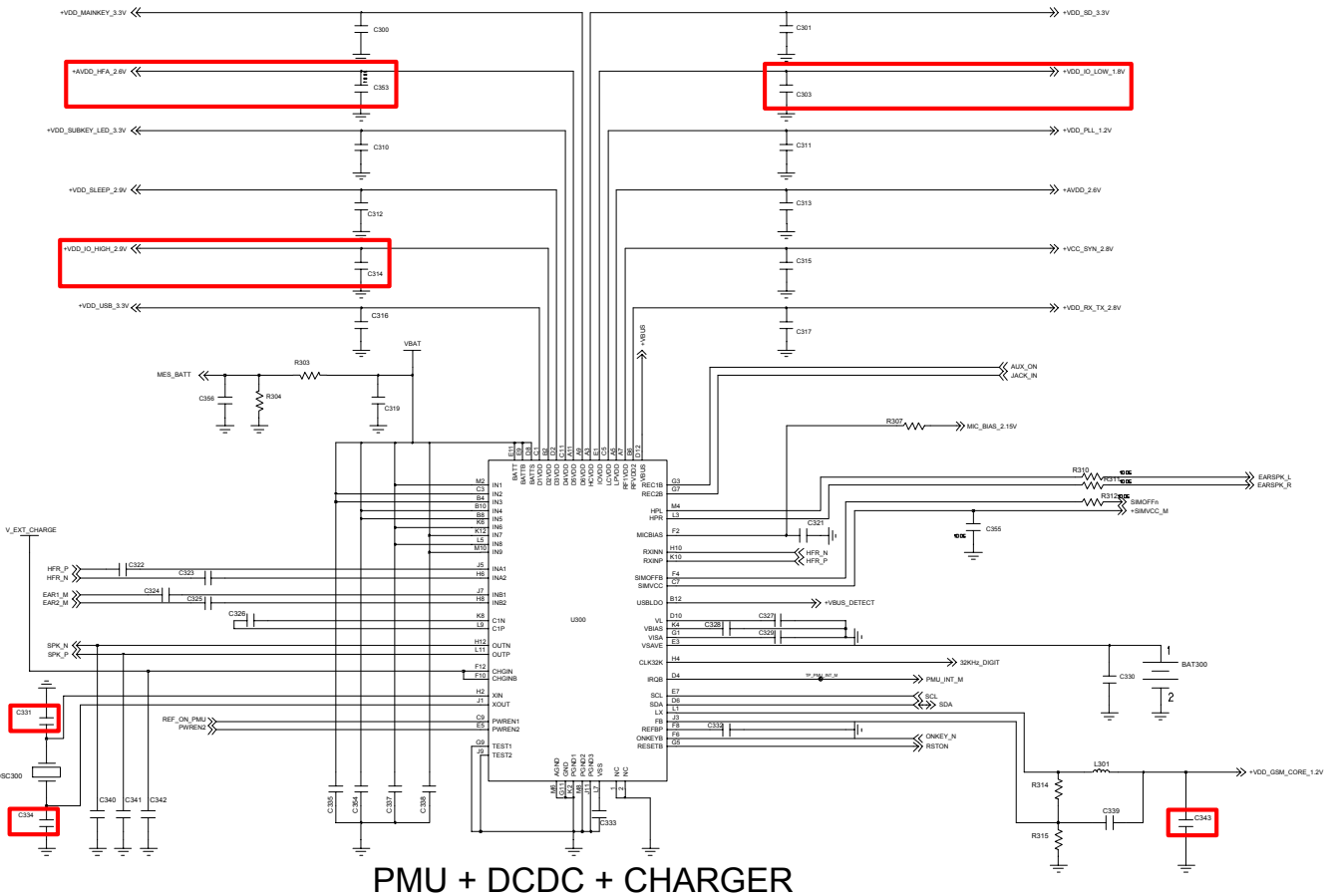
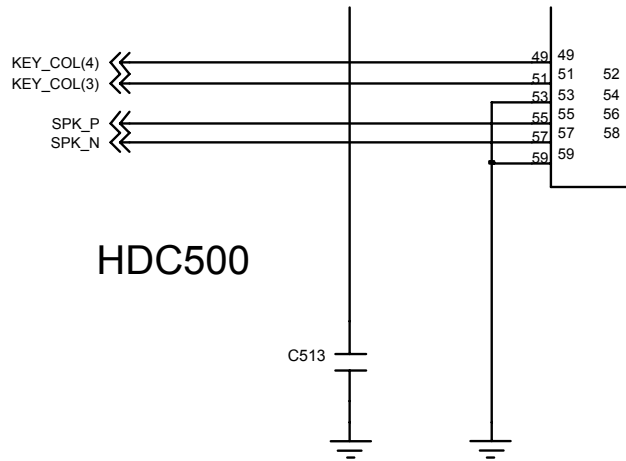
Master MIC path

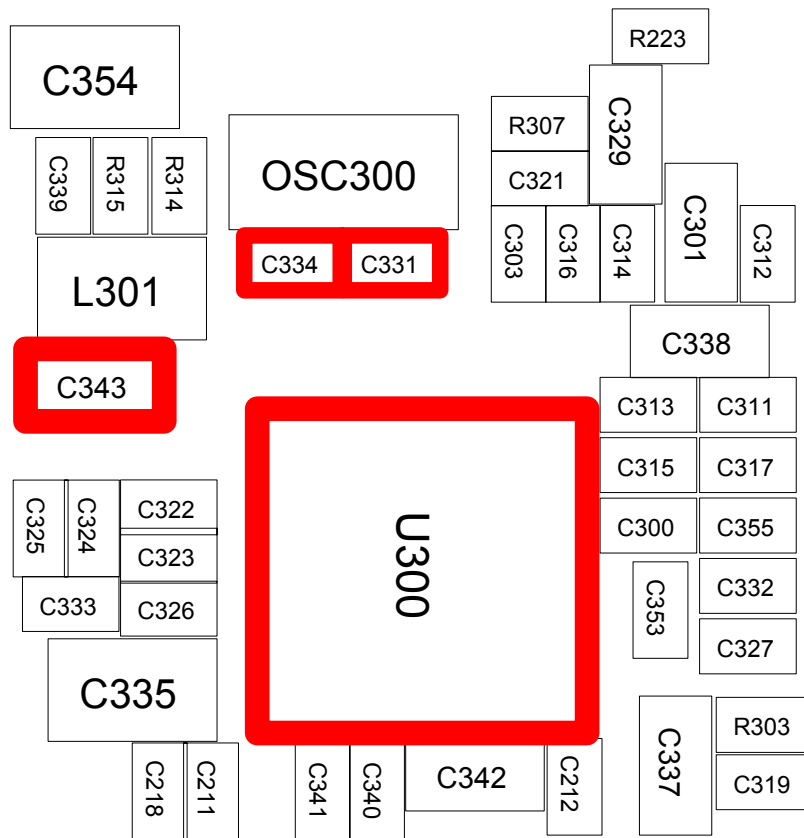
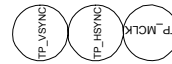
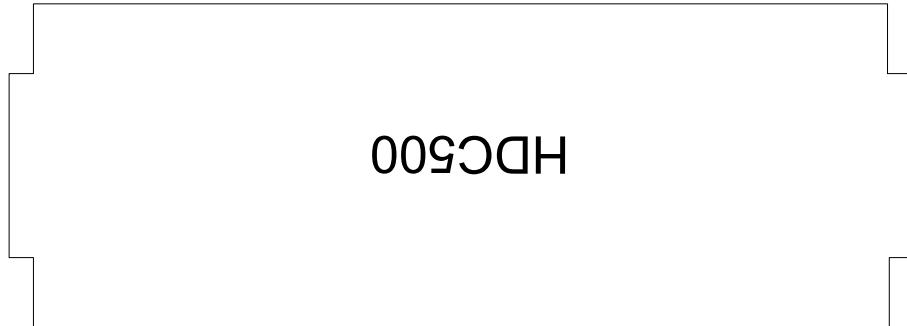
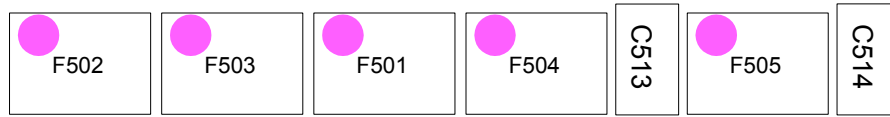
Slave MIC path



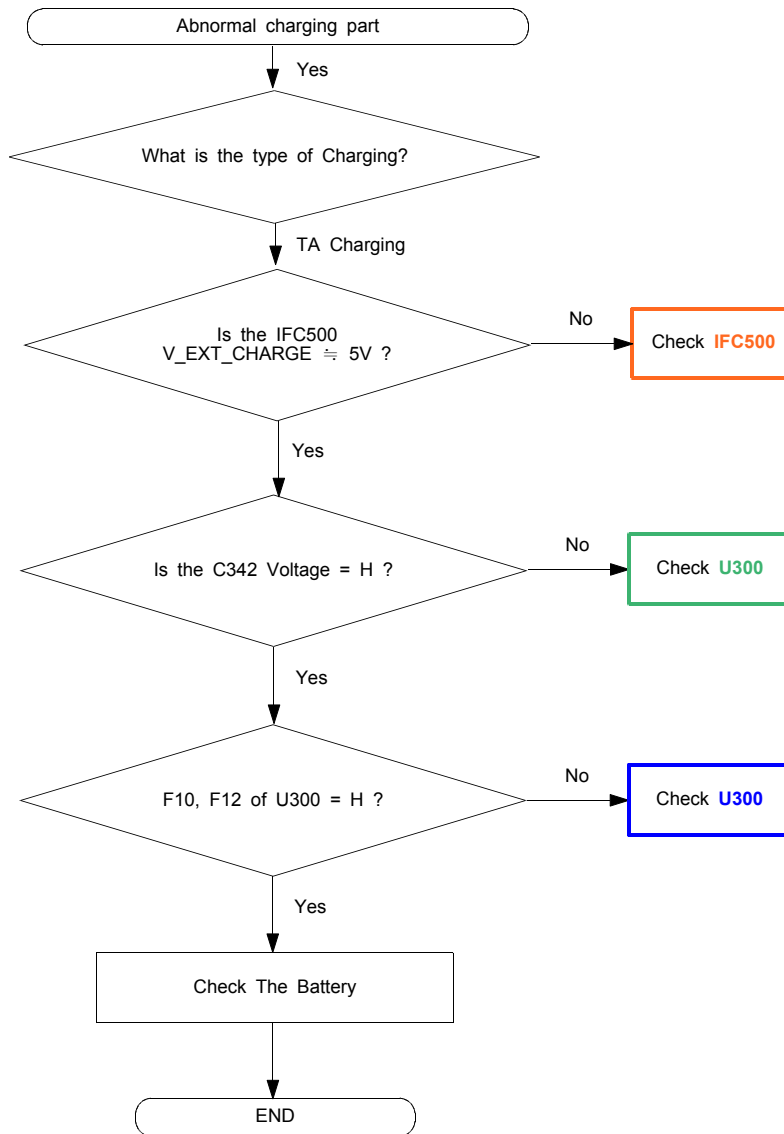
## 10-1-5. Receiver/Speaker Part

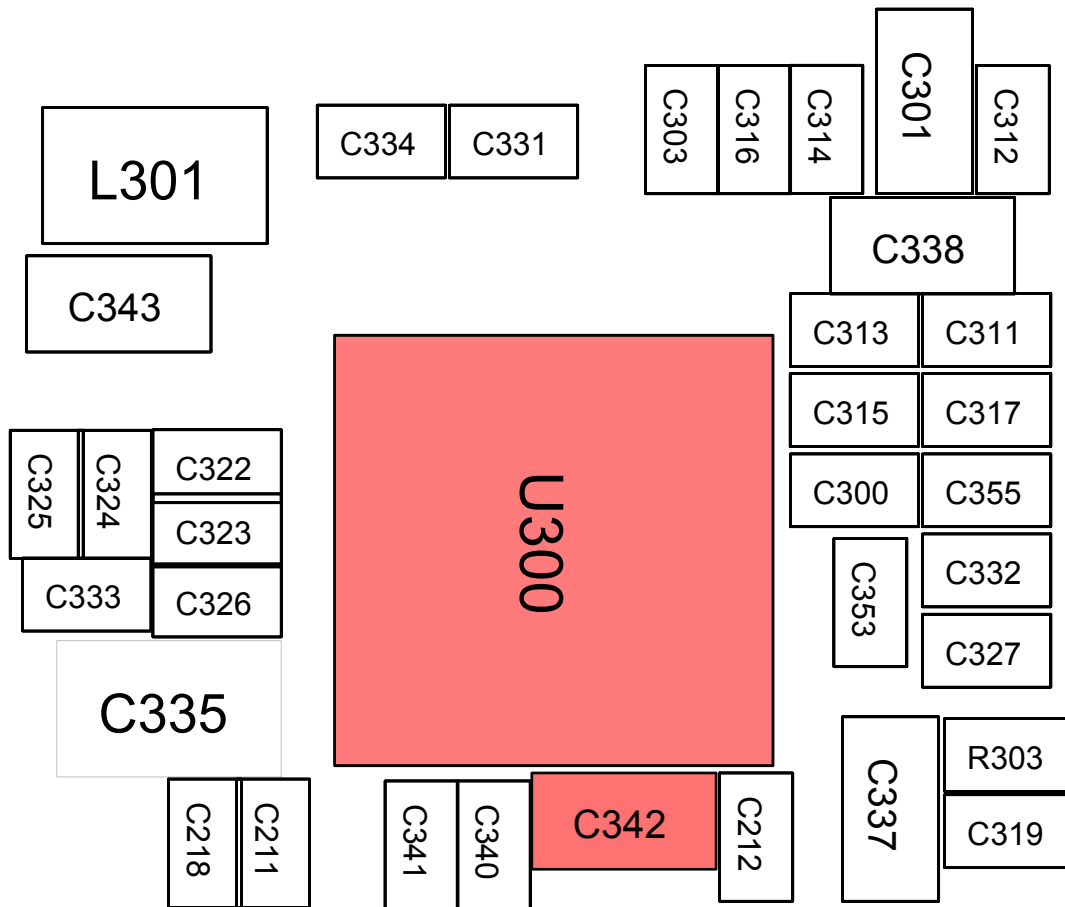
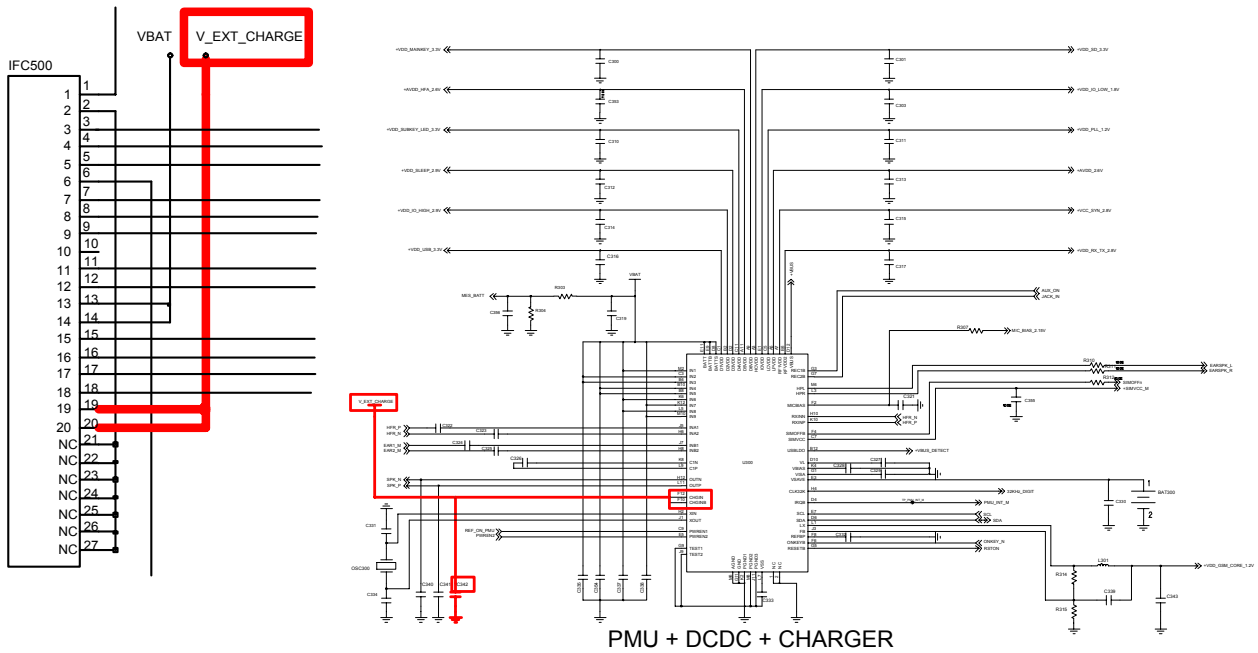




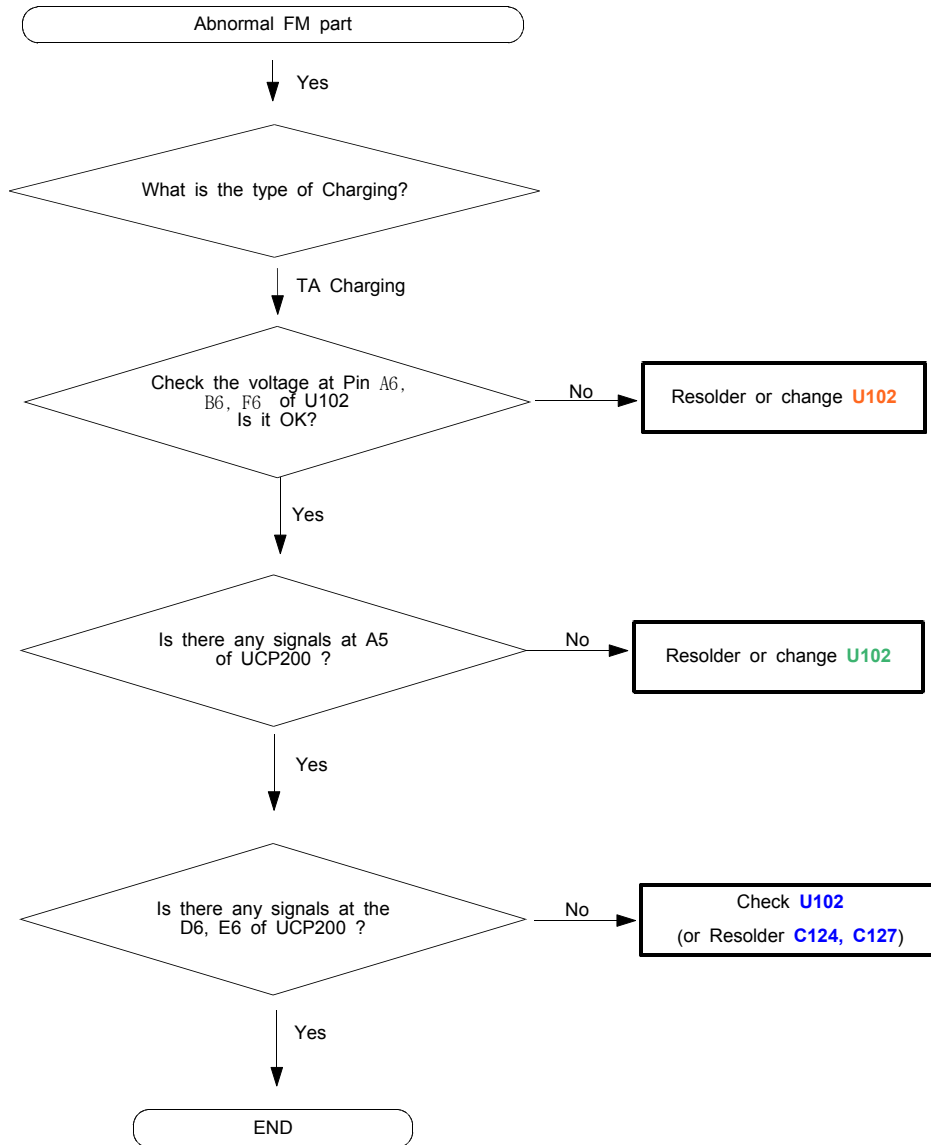


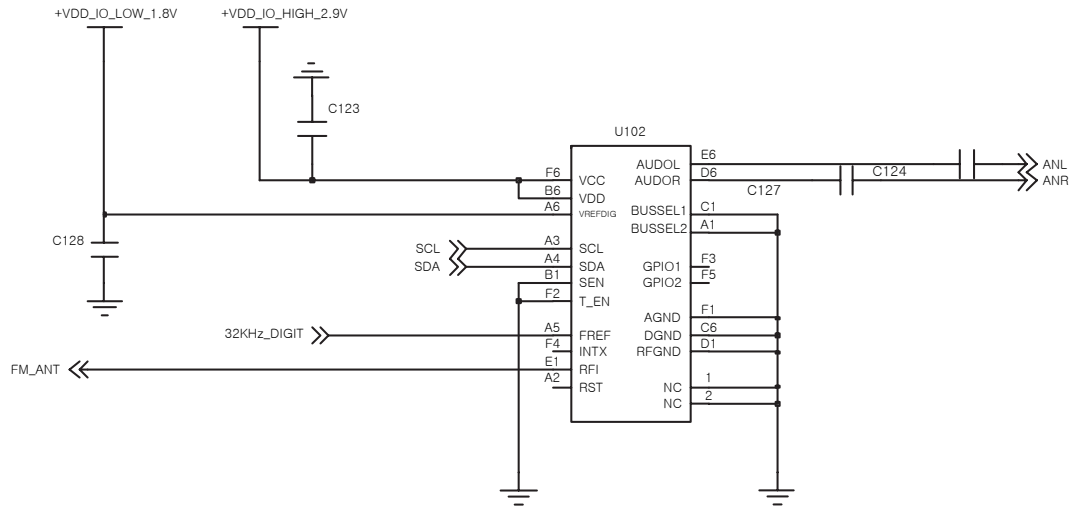
### 10-1-6. Charging Part



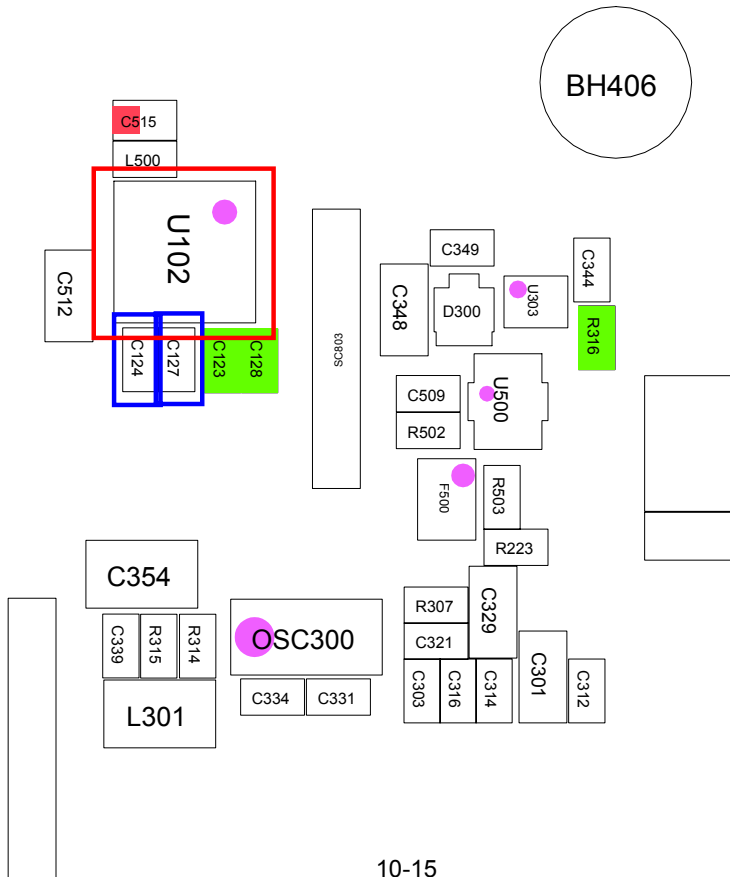


### 10-1-7. FM Receiver part



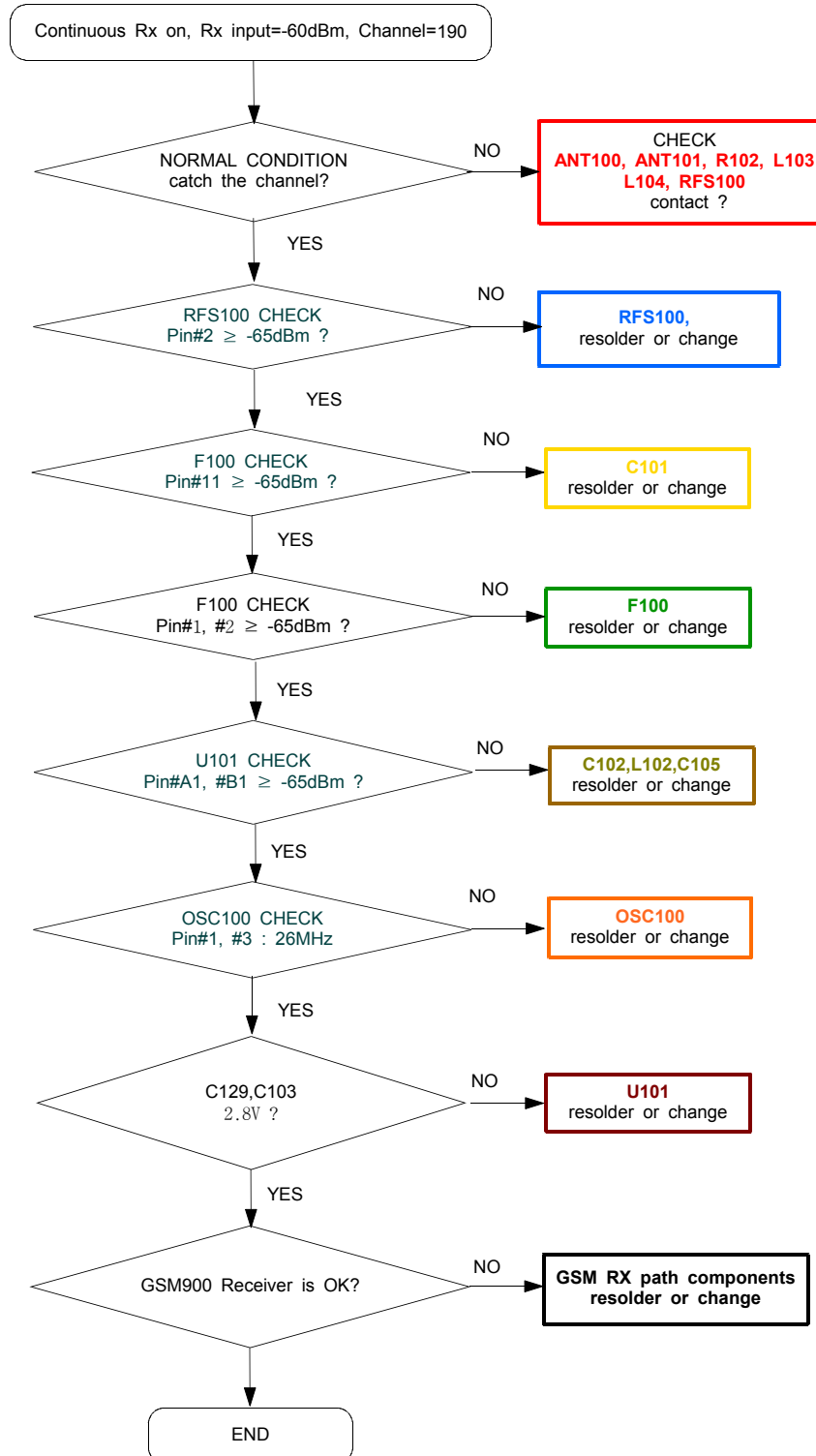


# FM RADIO



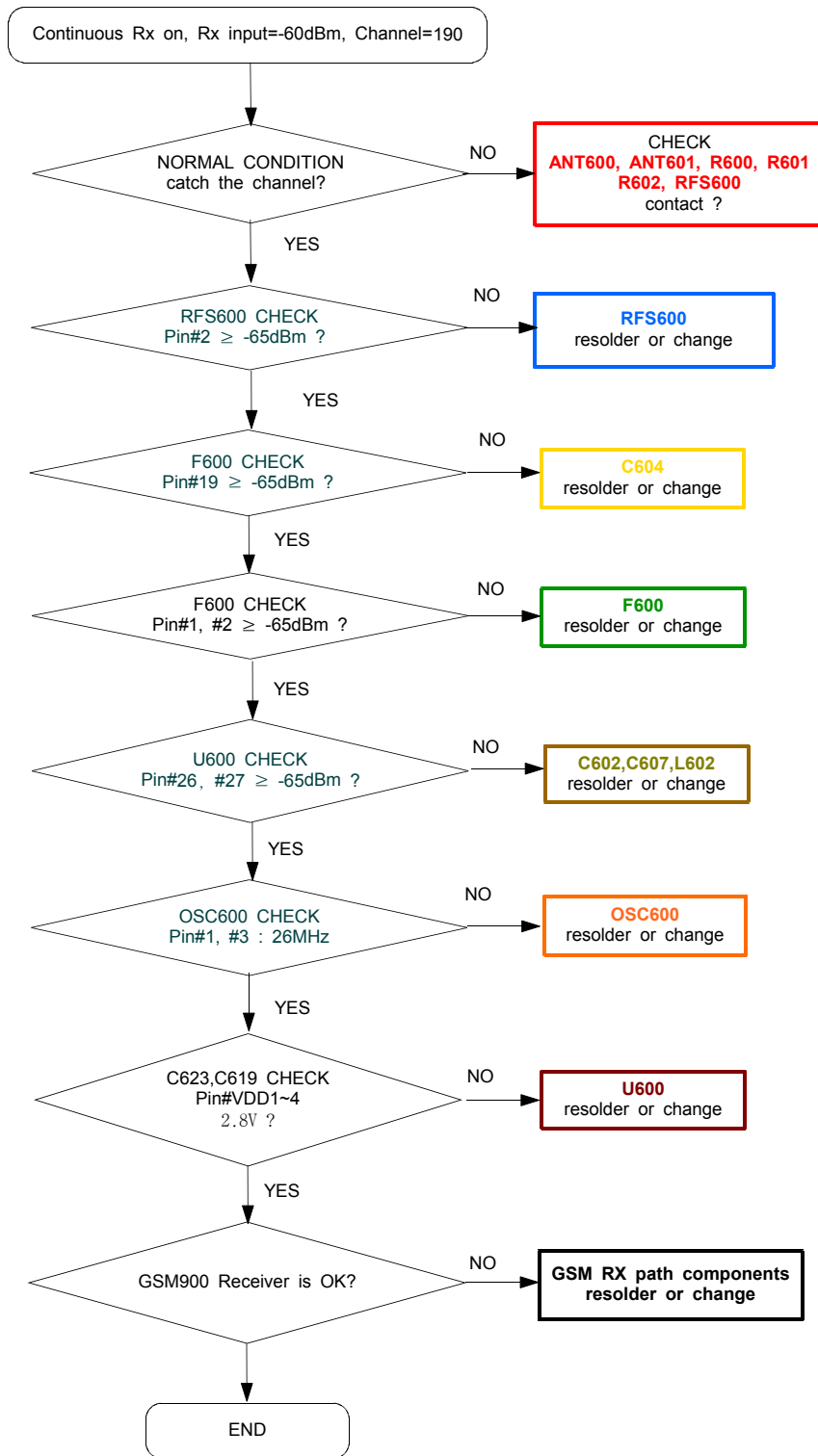
## 10-2. RF

### 10-2-1. GSM RX- MASTER

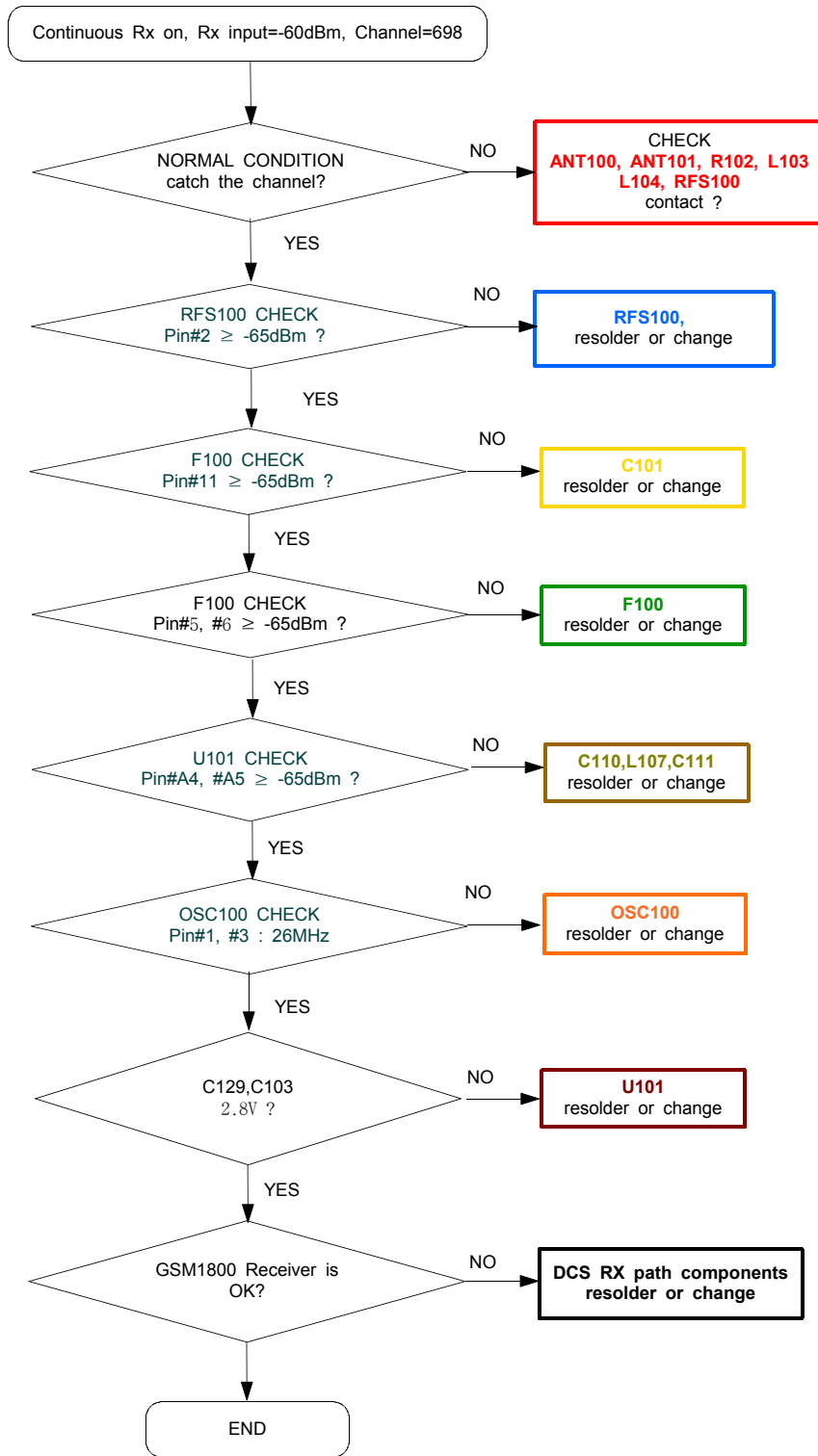




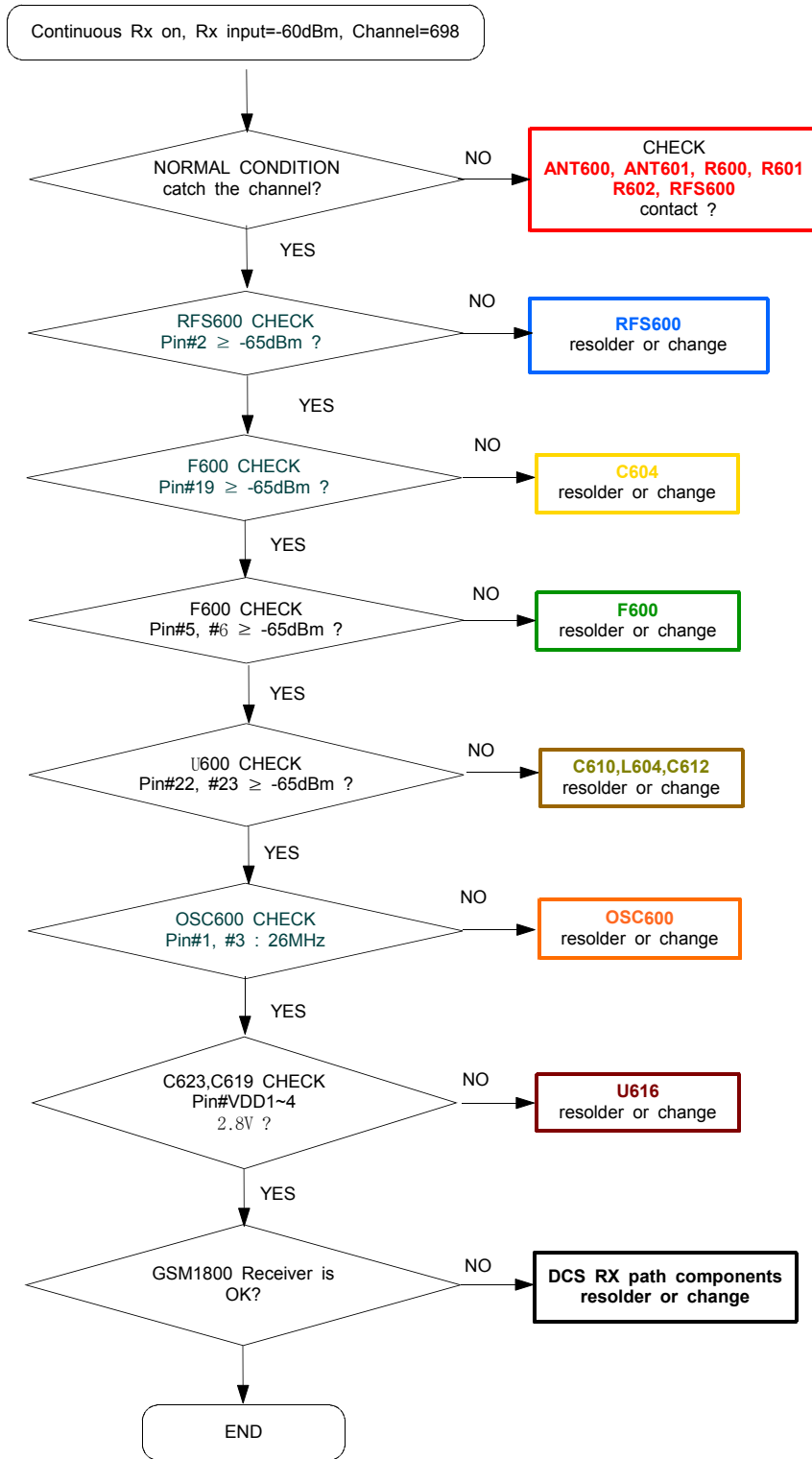
10-2-2. GSM RX- SLAVE



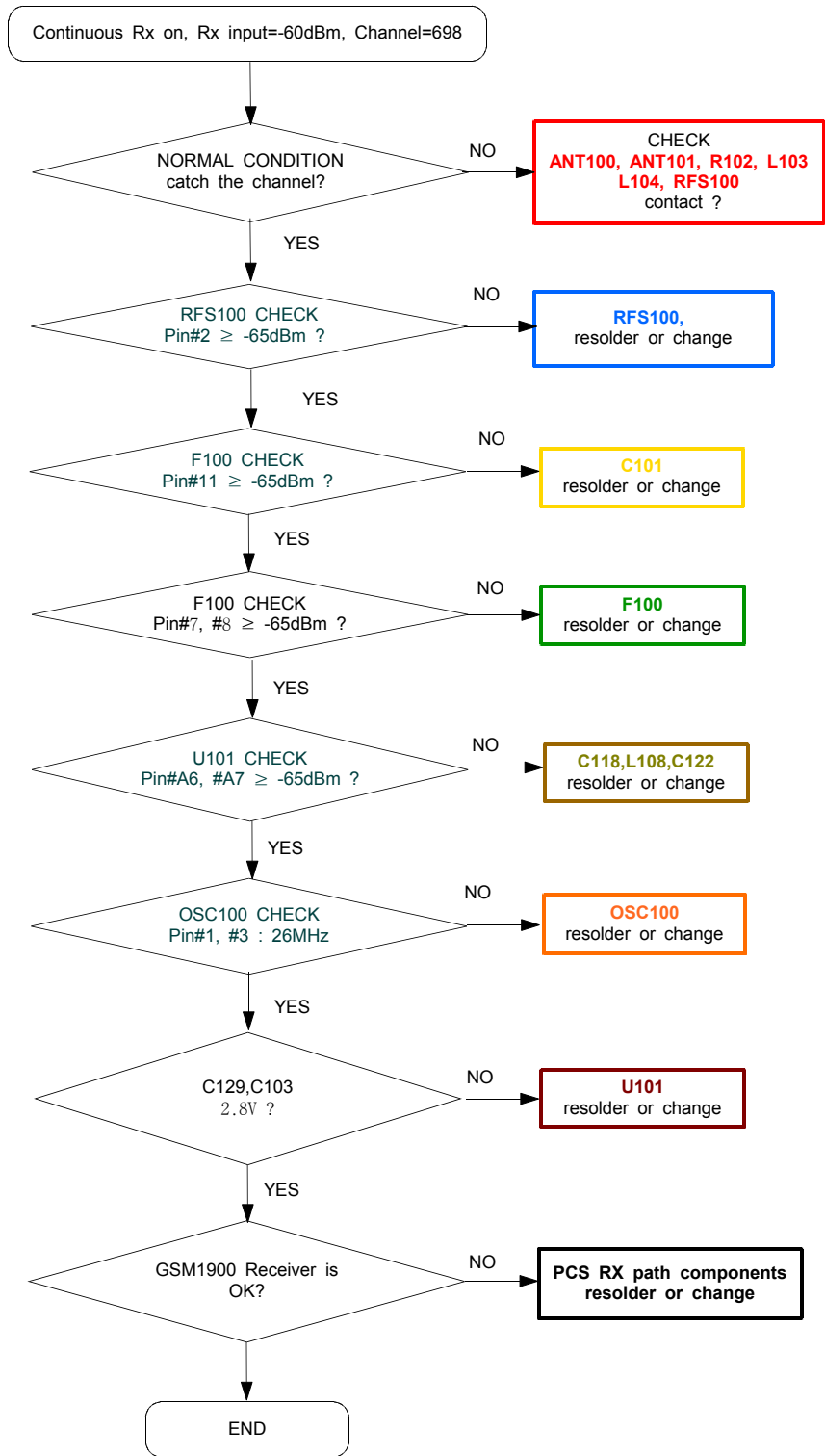
### 10-2-3. DCS RX- MASTER



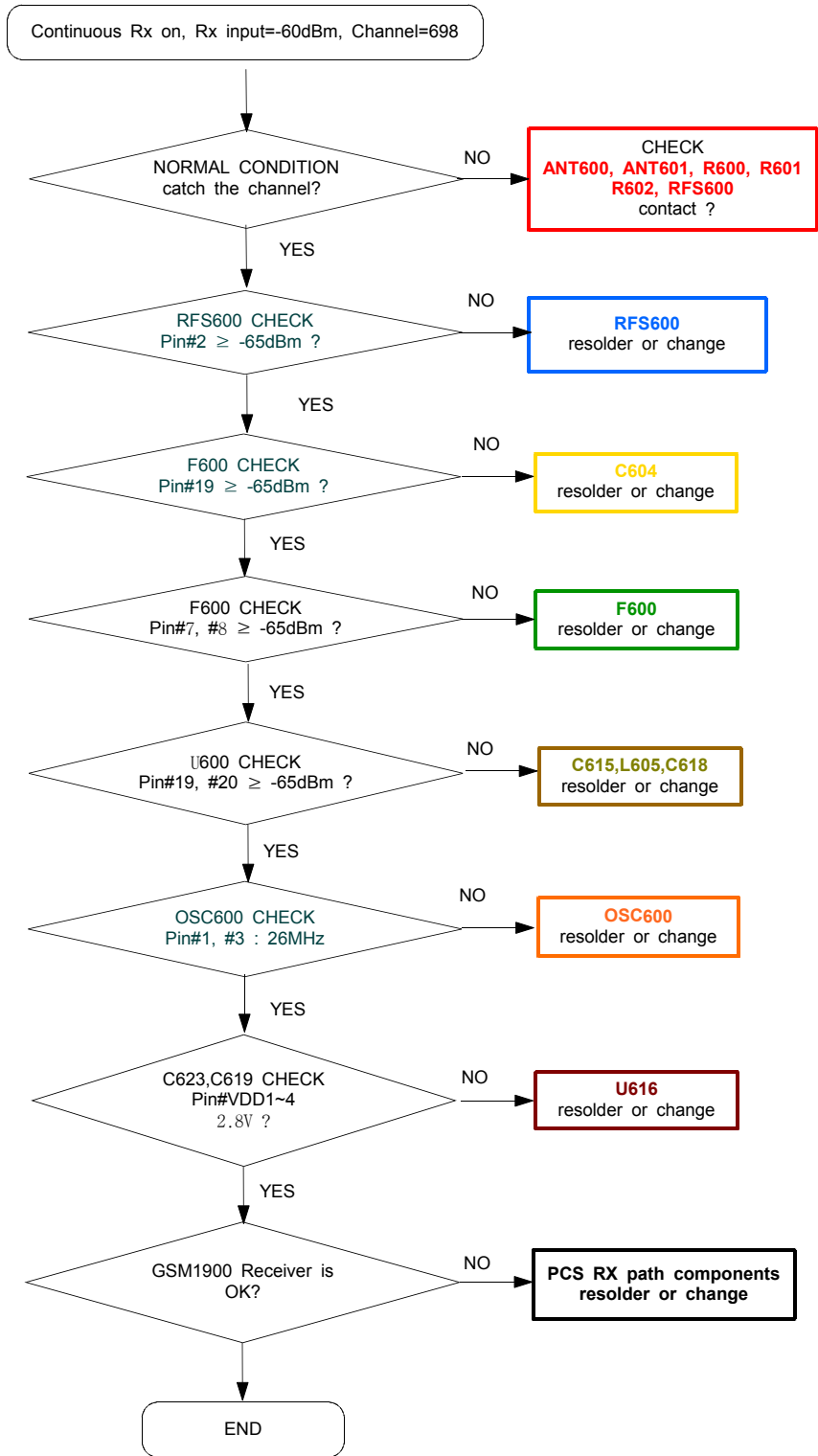
10-2-4. DCS RX- SLAVE



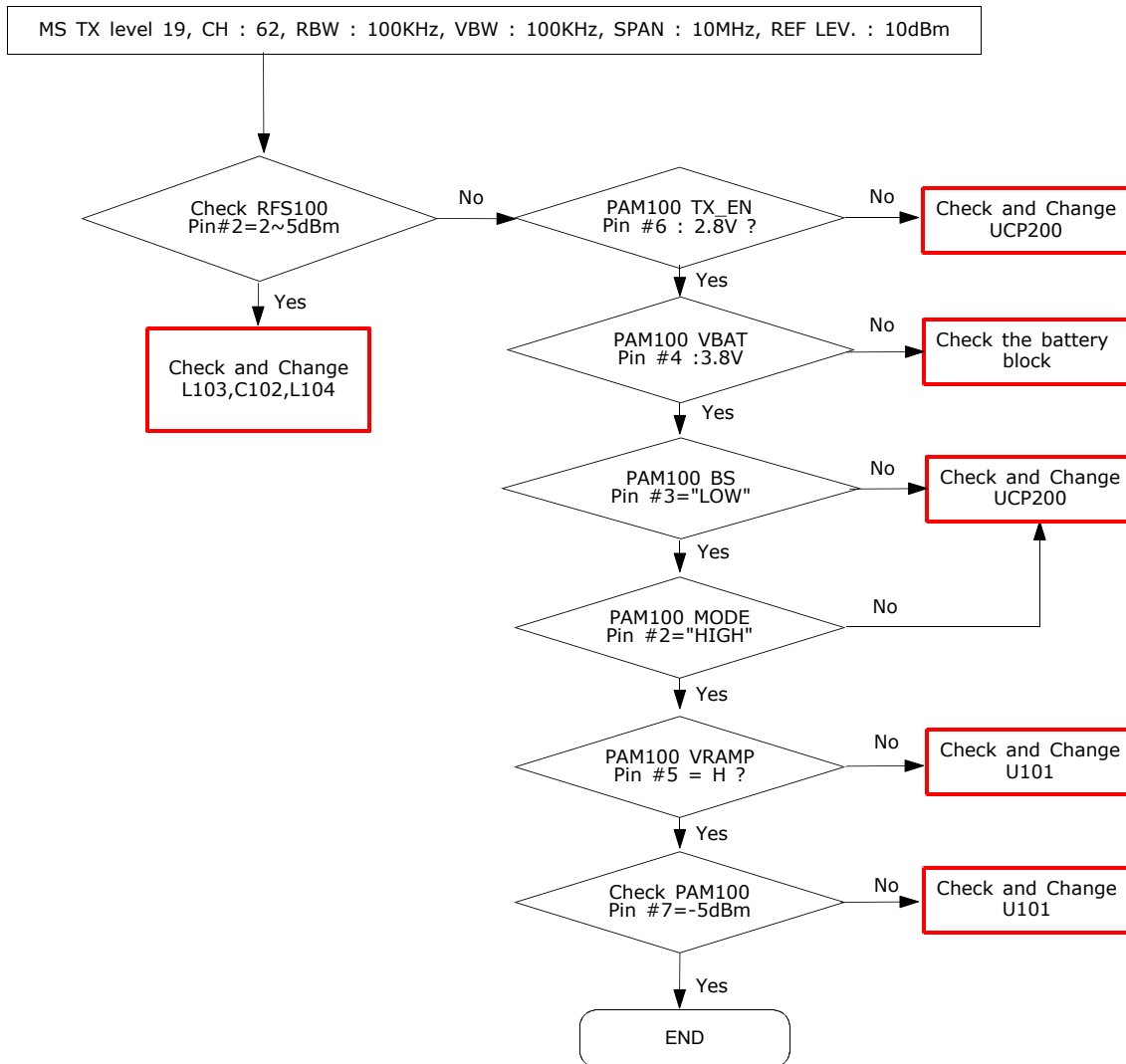
10-2-5. PCS RX- MASTER



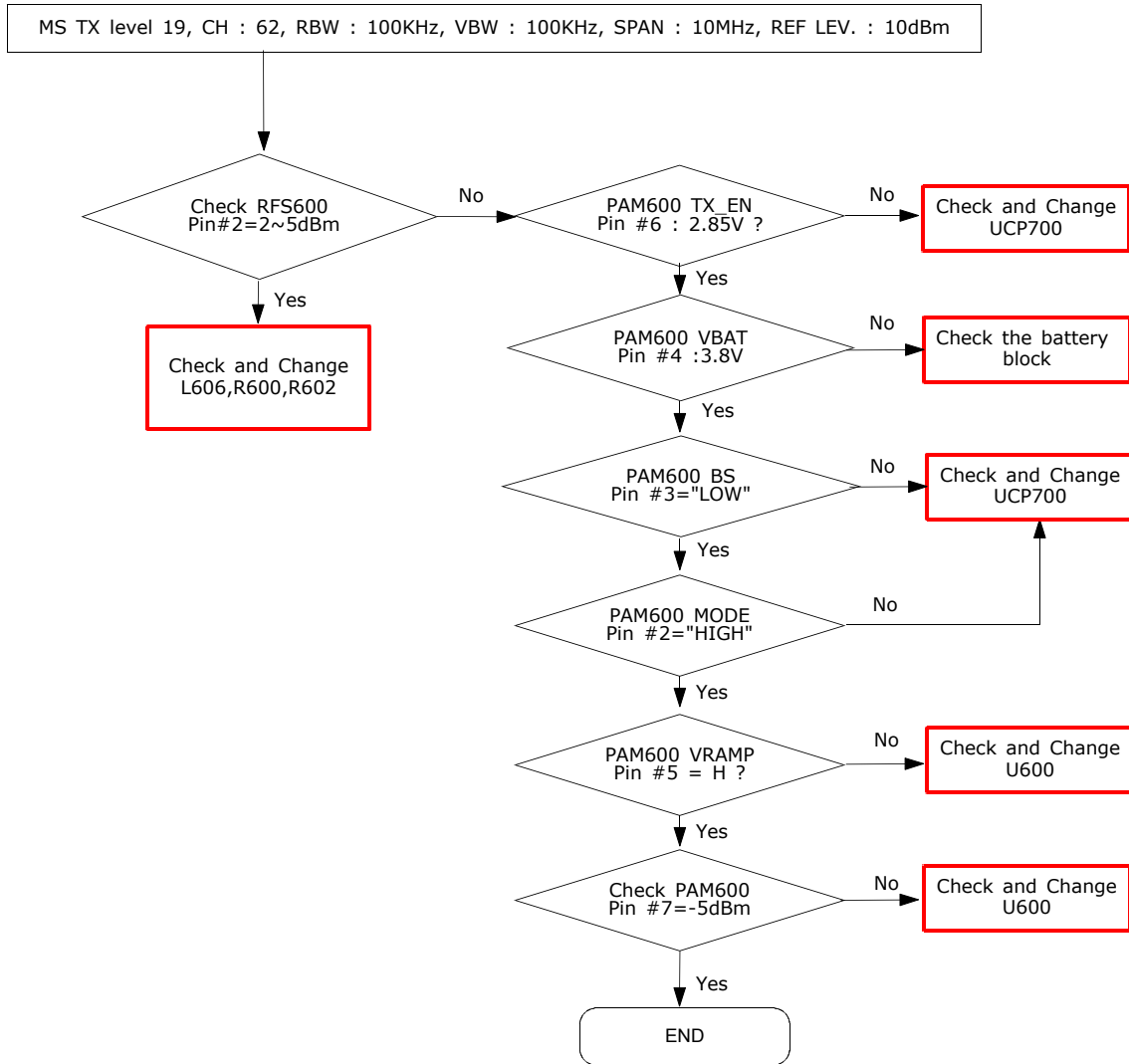
10-2-6. PCS RX- SLAVE



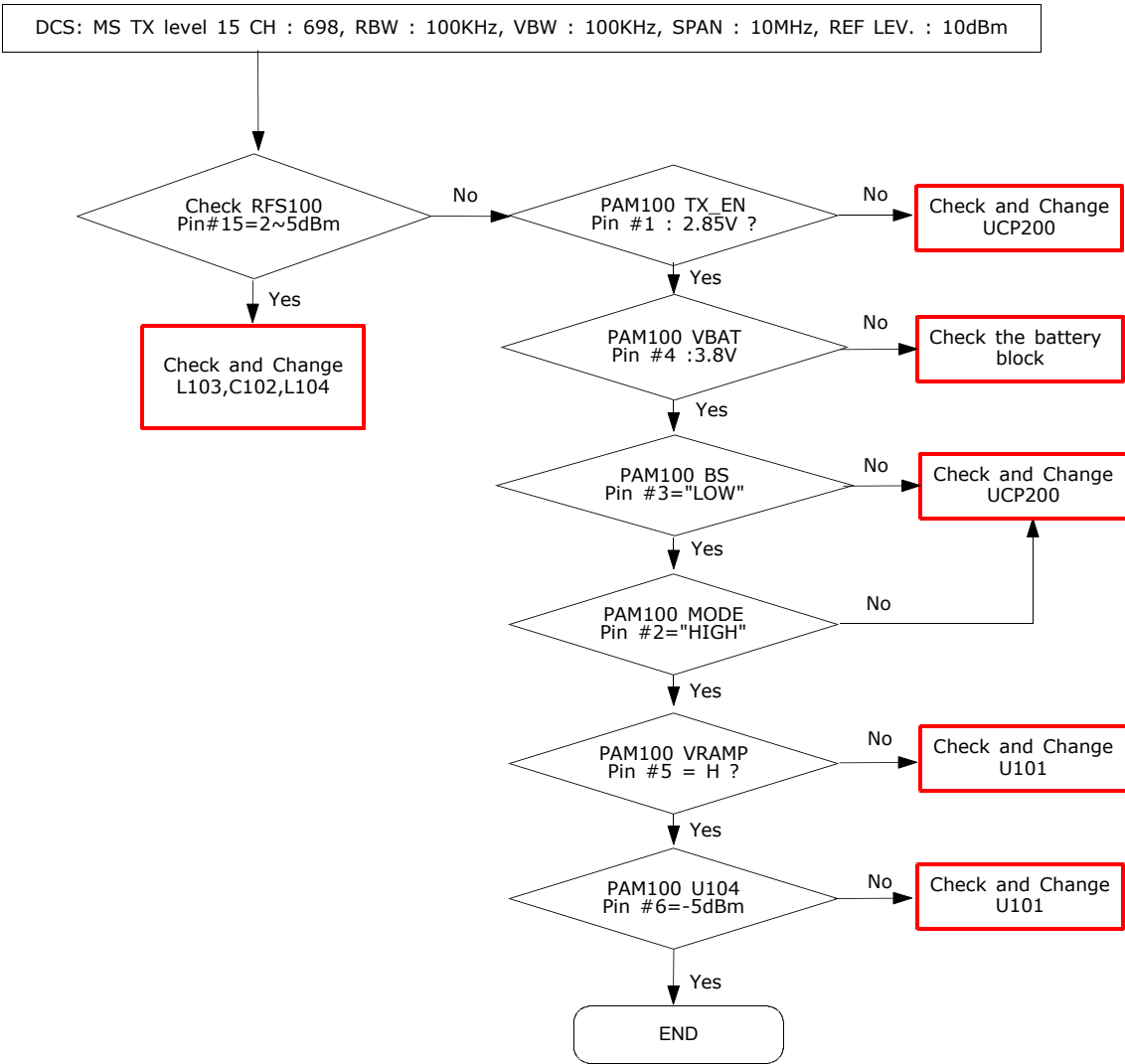
### 10-2-5. GSM900 TX - MASTER



**10-2-6. GSM900 TX - SLAVE**

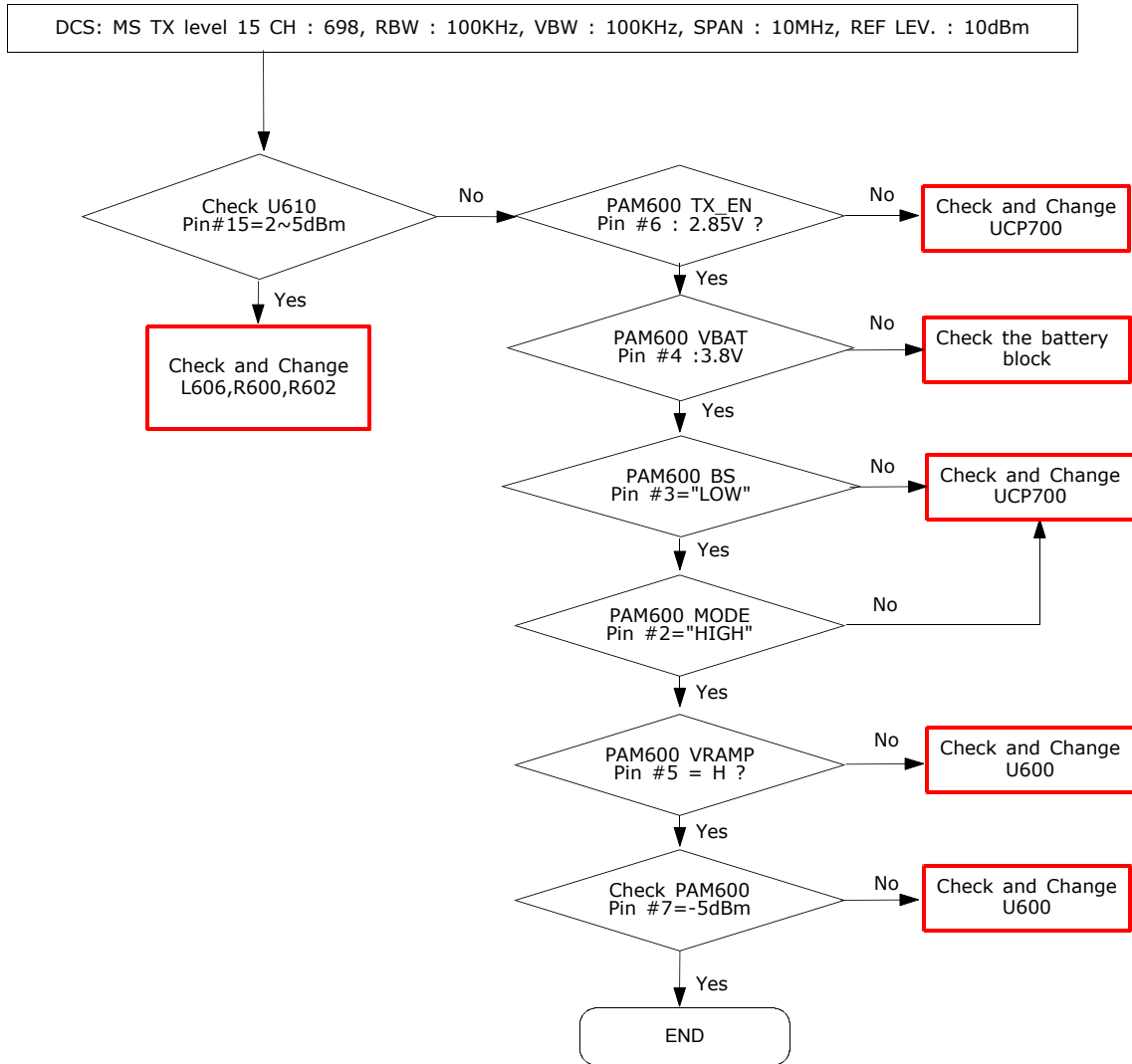


### 10-2-7. DCS/PCS TX- MASTER

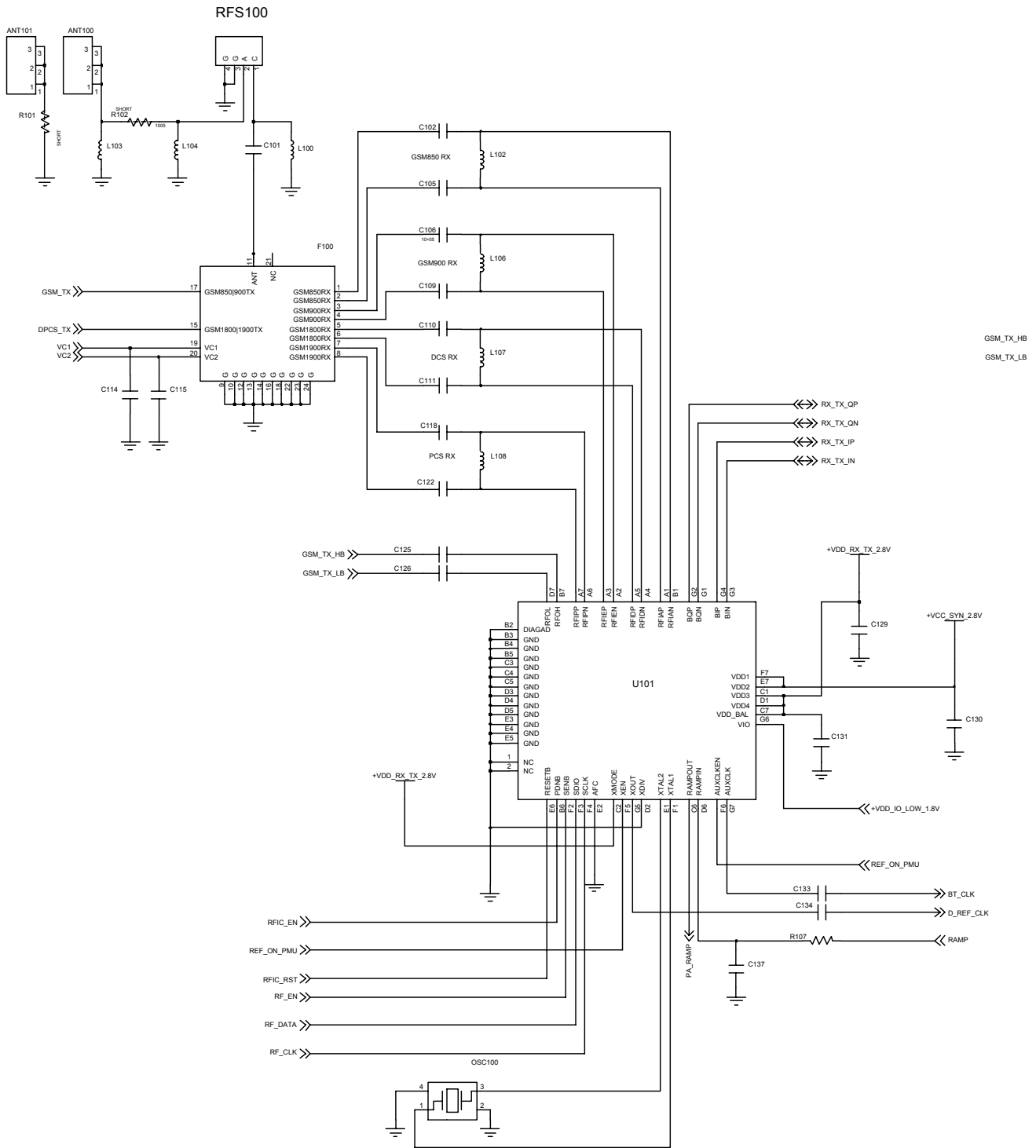


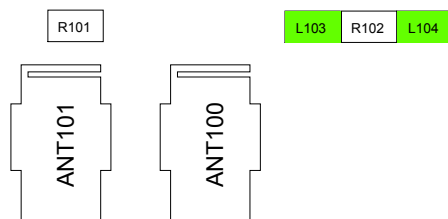
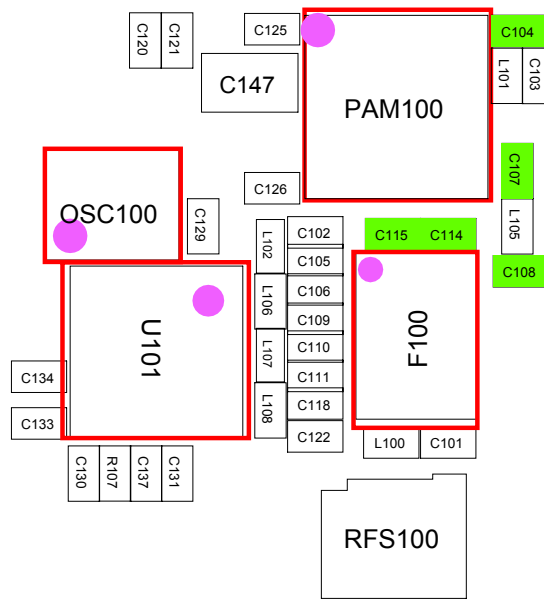
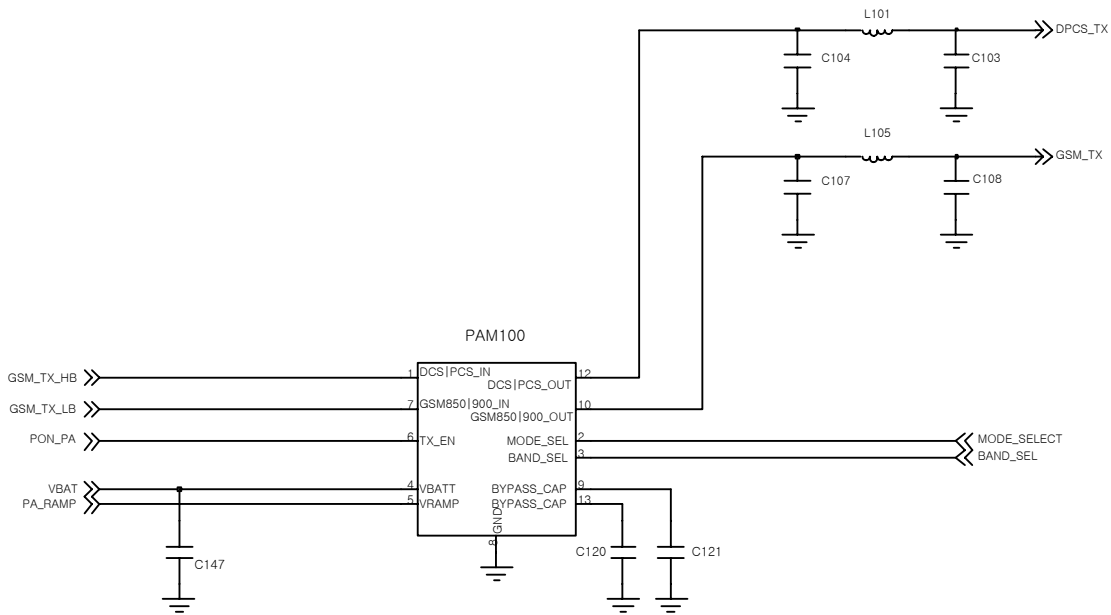


10-2-8. DCS/PCS TX- SLAVE

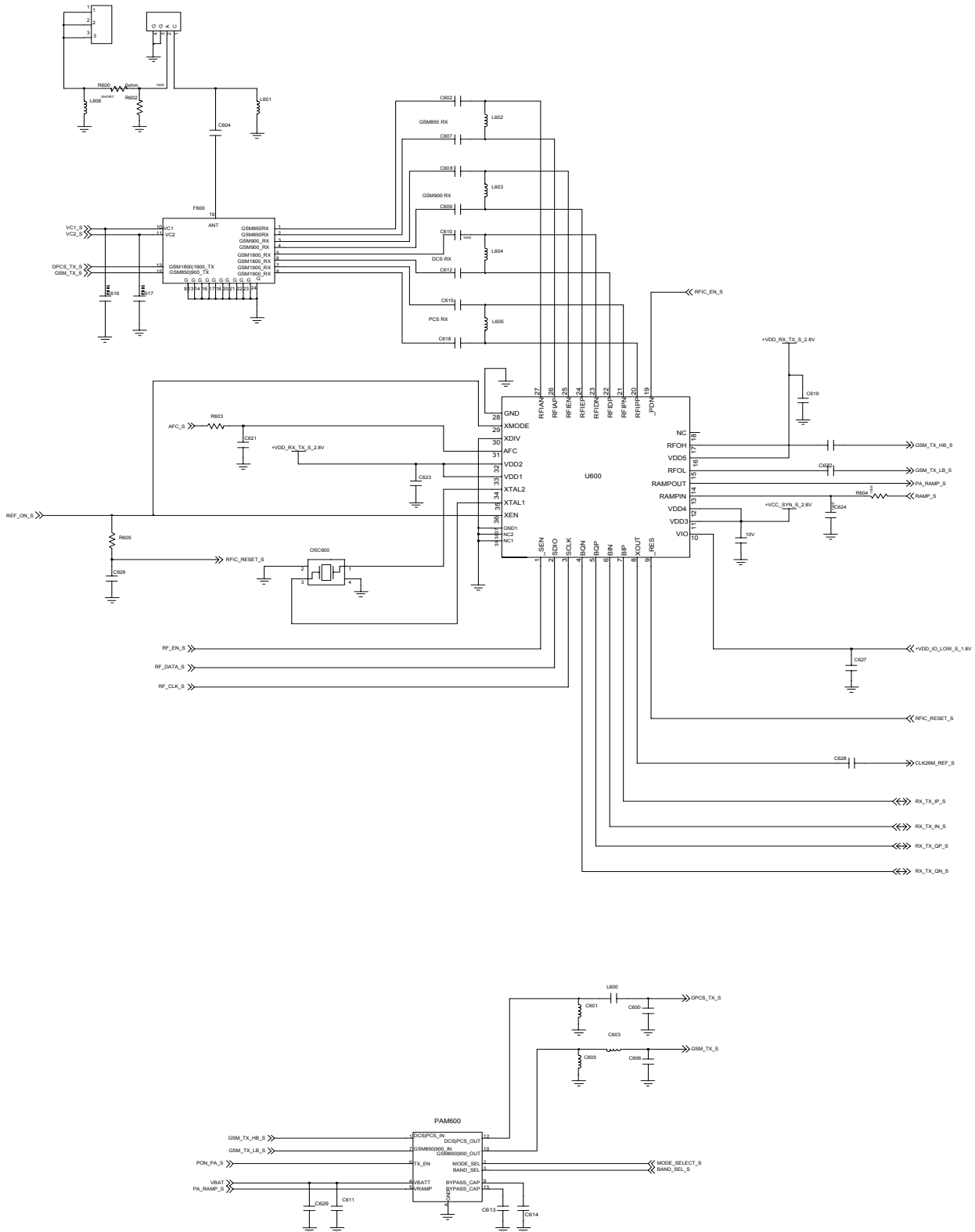


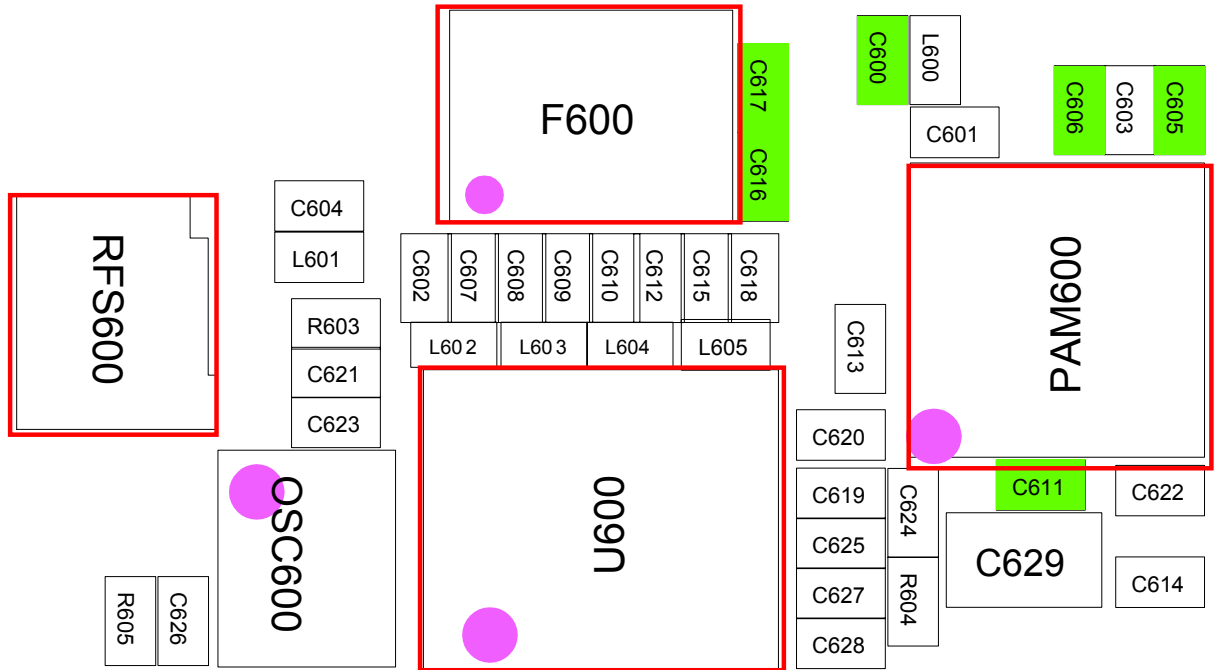
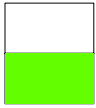
### MASTER RF





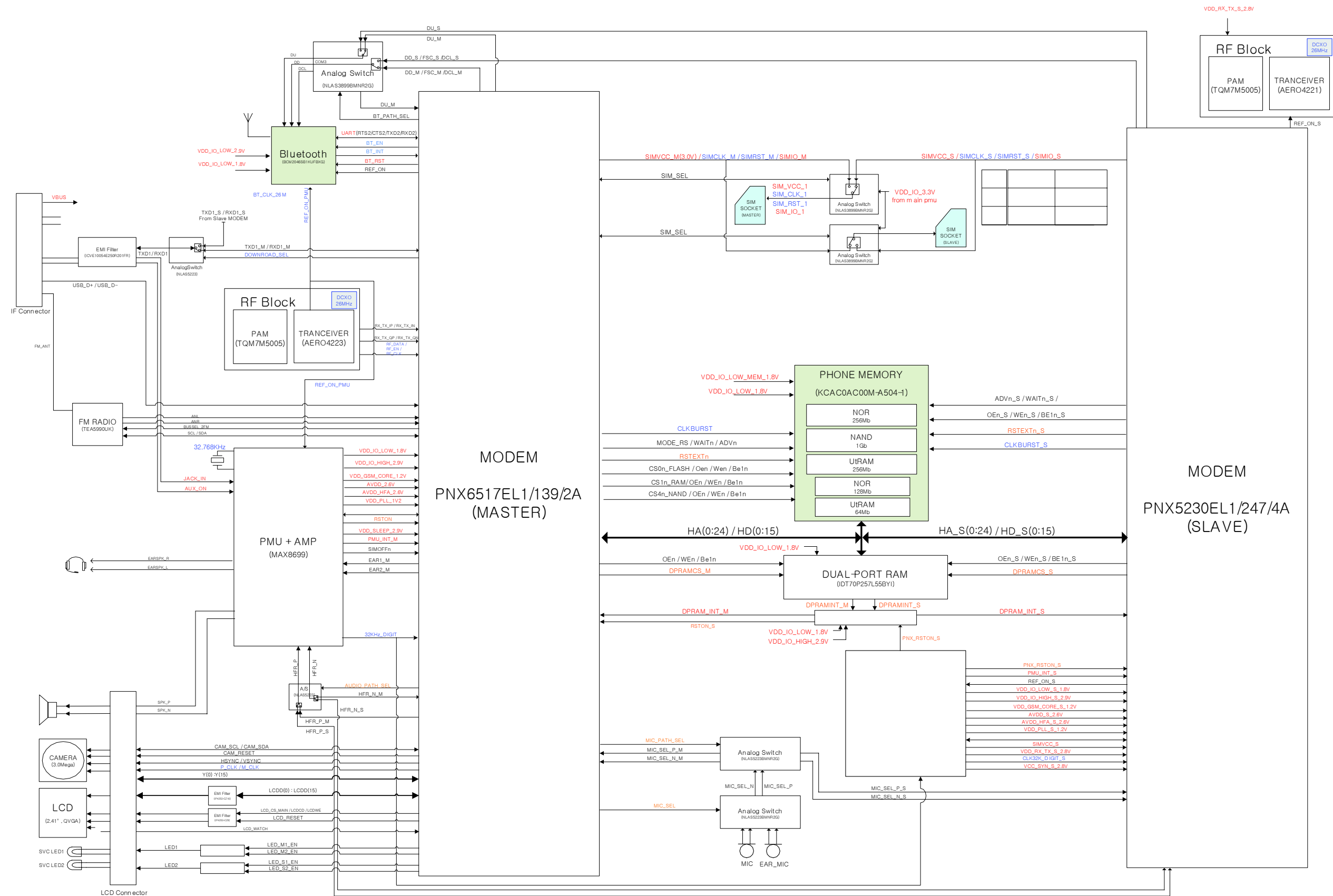
### SLAVE RF





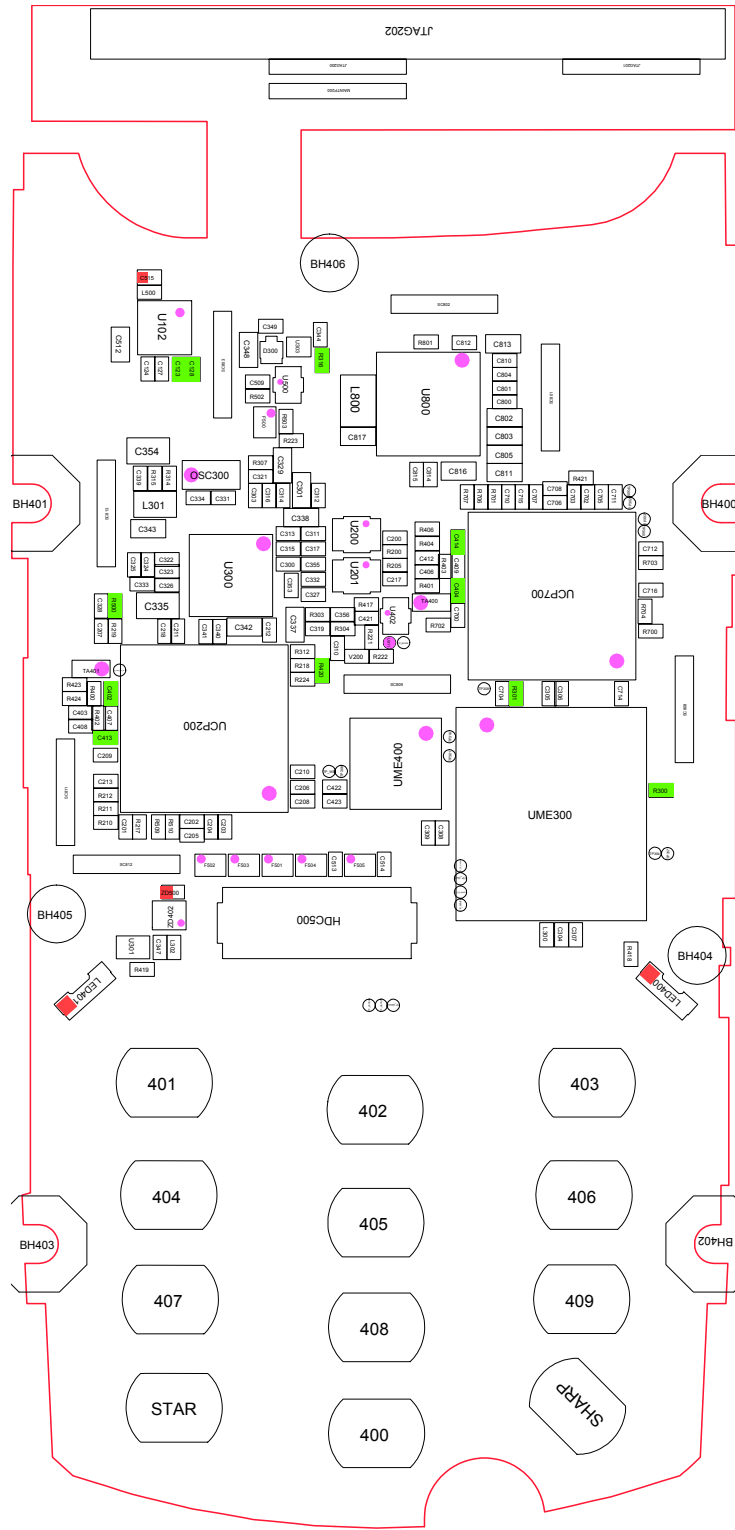
# 8. Block Diagrams

## 8-1. Block Diagram



# 9. PCB Diagrams

[Main top view]



[Main Bottom view]

