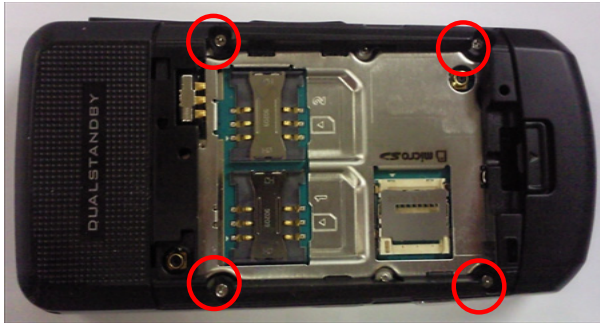


7. Disassembly and Assembly Instructions

7-1. Disassembly

1

1) Unscrew 4 points in the rear case.



2

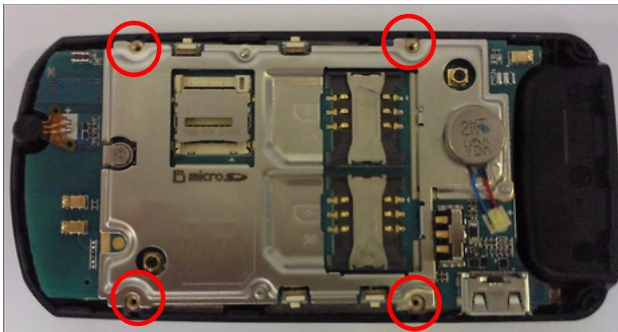
1) Use the dissolution tool and separate LOCKER after pressing the grooves of the SIDE.

-Disassembly tools must be used.
-REAR IF connector and will not interference for disassembly should note.



3

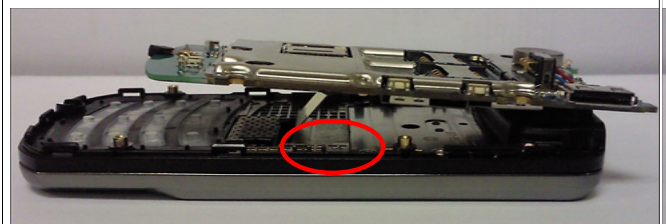
1) Rear 4 of the combined separate call to the top of the PBA



4

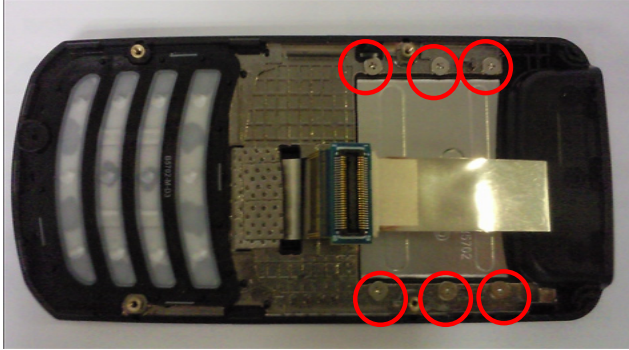
1) Before separating PBA MAIN FPCB and will separate the PCB

- MAIN FPCB carefully the separation of the damage is so CONNECTOR.



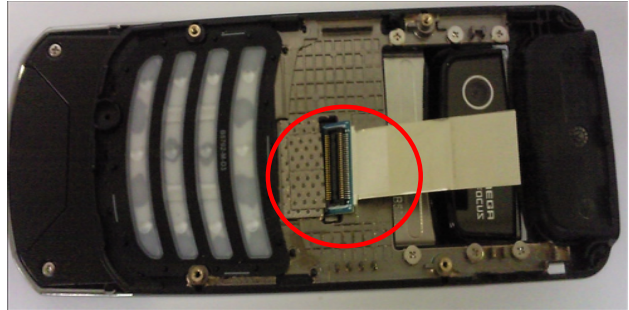
5

1) Unscrew 6 points in the Front case.



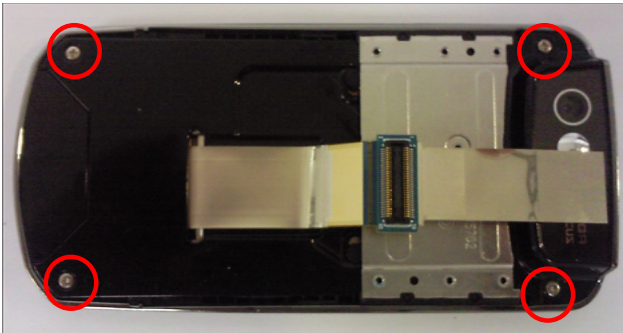
6

1) Get a separate Front and Lower
-To pay attention to the separation of the
damage FPCB Connector



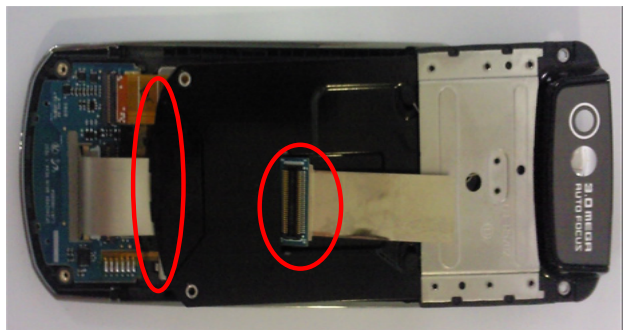
7

1) Unscrew 4 points in the Lower case.



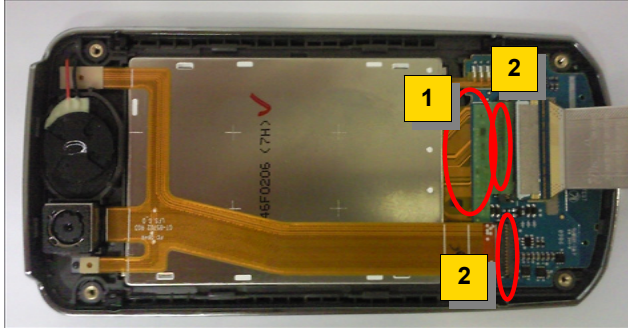
8

1) Separate attention to the Hook
2) Lower PCB connector to carefully
separate damage



9

- 1) Remove the Main FPCB Tape
- 2) Main/Camera FPCB separation after the Connector Open



10

- 1) Carefully separate the LCD of Upper tape.



11

- 1) Separate Subkey pad after Separate LCD.



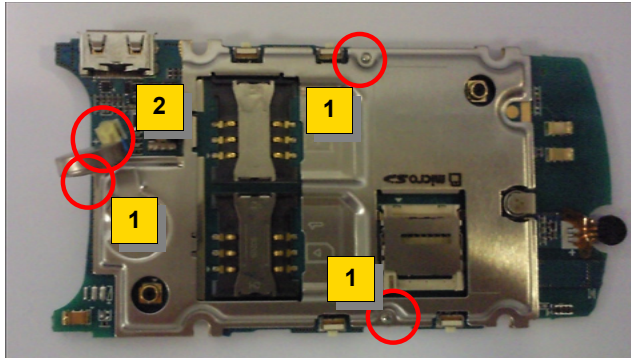
12

- 1) Complete separation



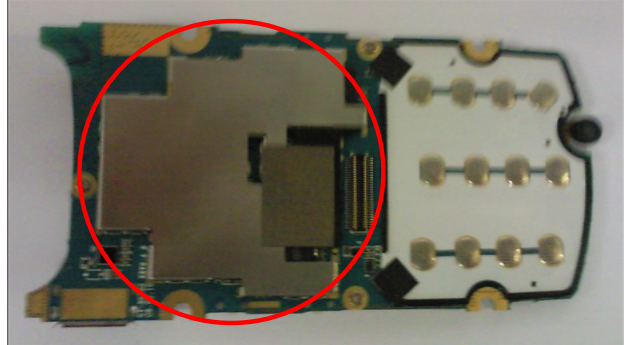
13

- 1) Unscrew 3 points in the Lower case.
- 2) Separator the motor note Tape



14

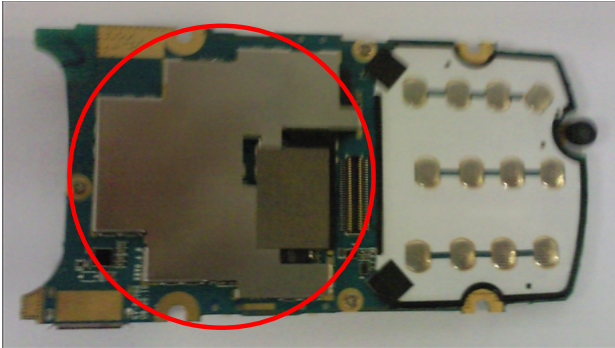
- 1) Top Shield Can Separation



7-2. Assembly

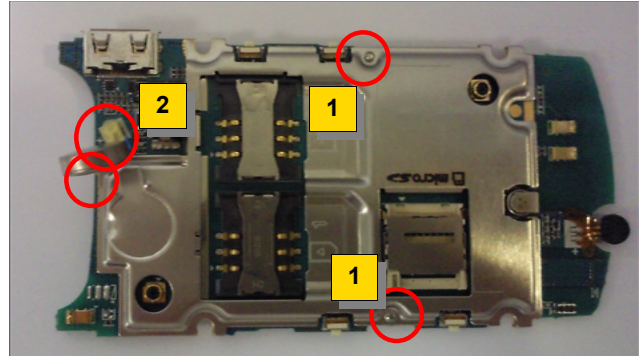
1

1)Top Shield can be assembled in the PBA Clip



2

1)Screw the 3point..
2) should be attached to the motor



3

1) Sub KeyPAD assemble in the PBA



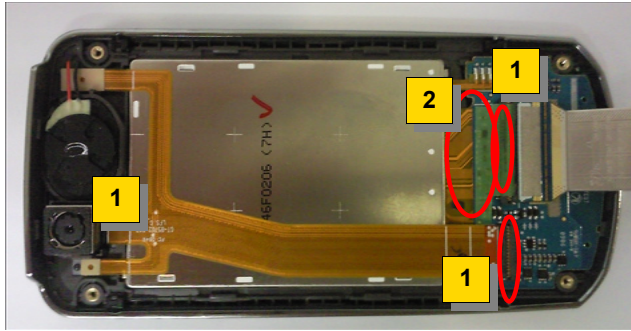
4

1)LCD is assembled in the Upper.



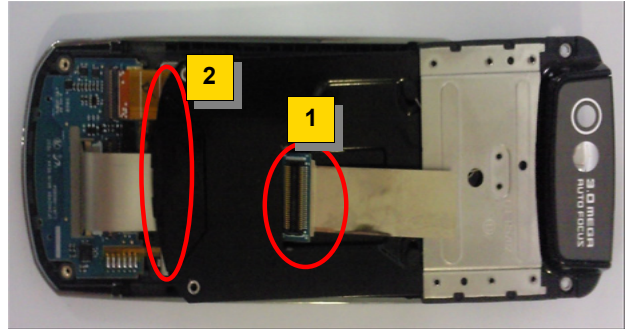
5

- 1) LCD/CAMERA FPCB is assembled to the connector
- 2) Tape should be attached to LCD Conn.



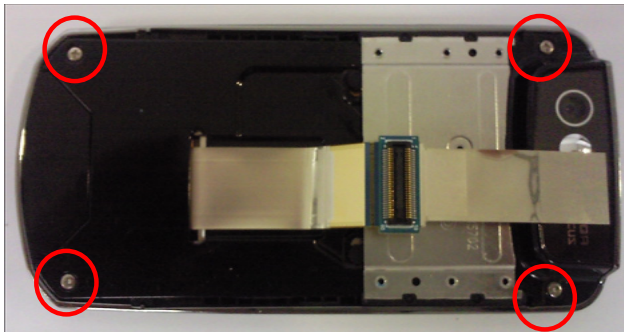
6

- 1) Attention to the damage of LCD FPCB is inserted to the Lower.
- 2) Lower Assembly to pay attention to Lower hook.



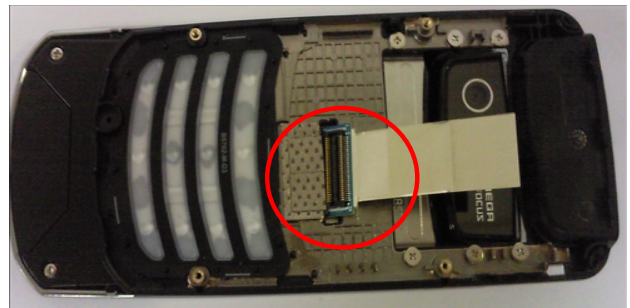
7

- 1) Screw the Lower 4 point



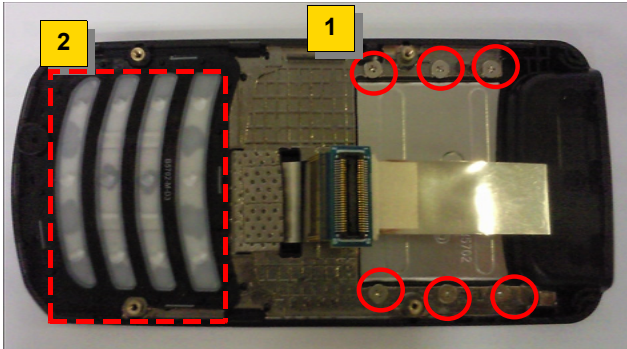
8

- 1) Insert the FPCB Connector attention to damage.



9

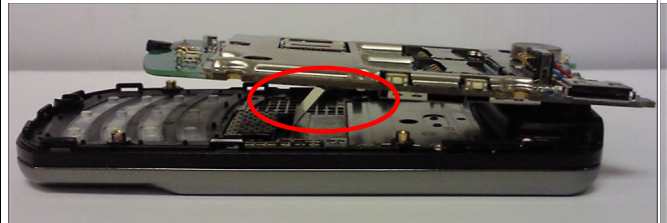
- 1) Screw 6 point
- 2) Main KEYpad assembly..



10

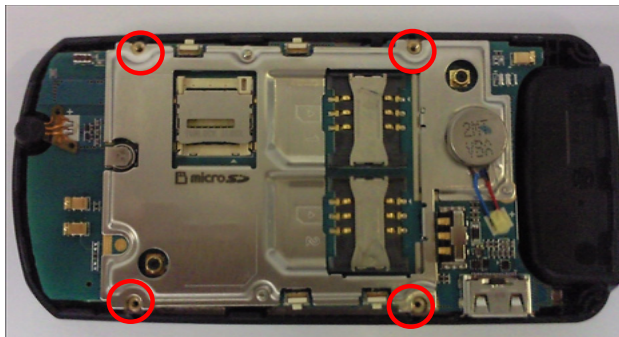
- 1) Assembly Main FPCB Connector & PBA

-Sure FPCB & PBA Connector assembly!



11

- 1) PBA signed a Screw hole and landed in the attention.



12

- 1) Assembly Upper Assy & Rear



13

1)Screw 4 point in the Rear.

