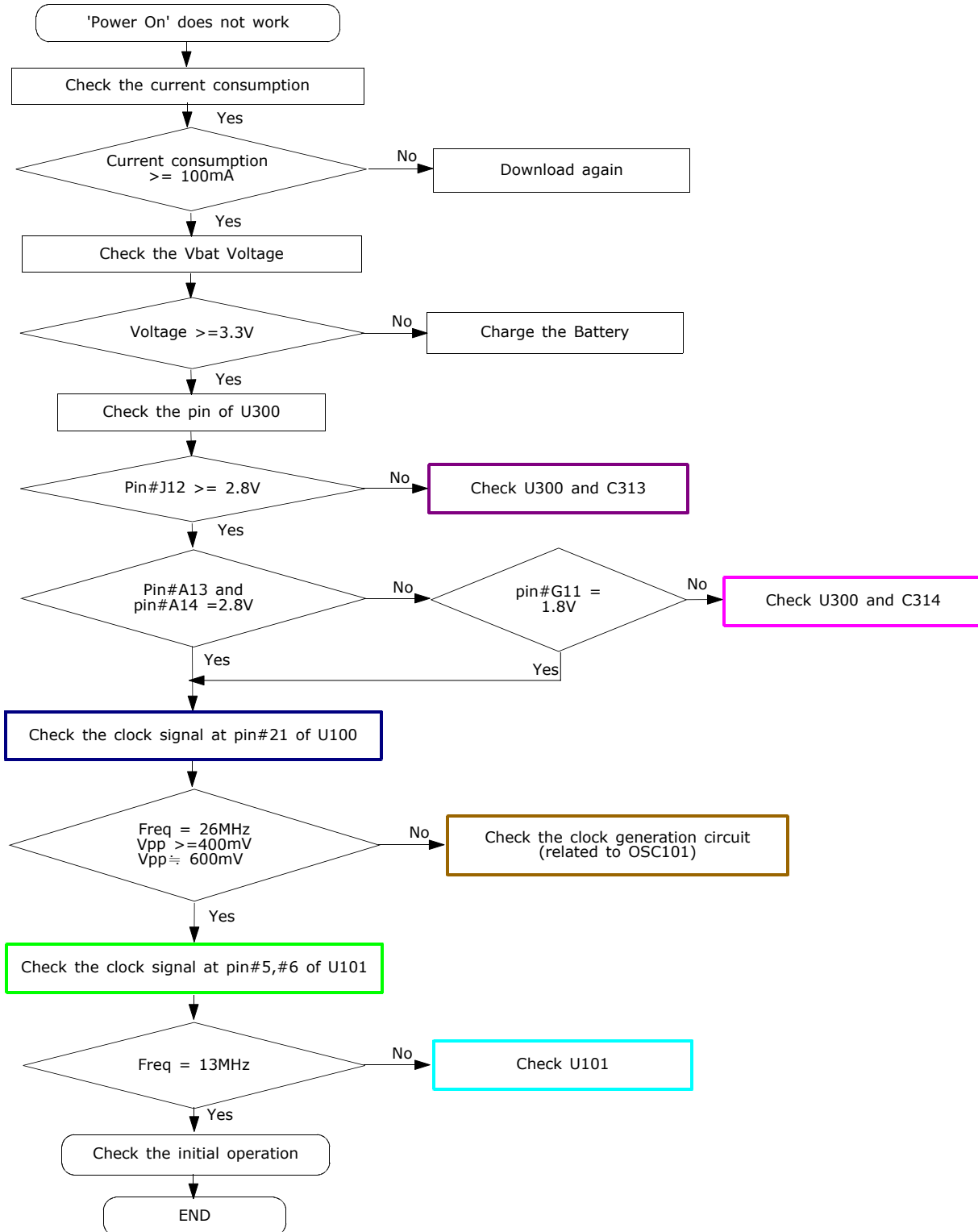


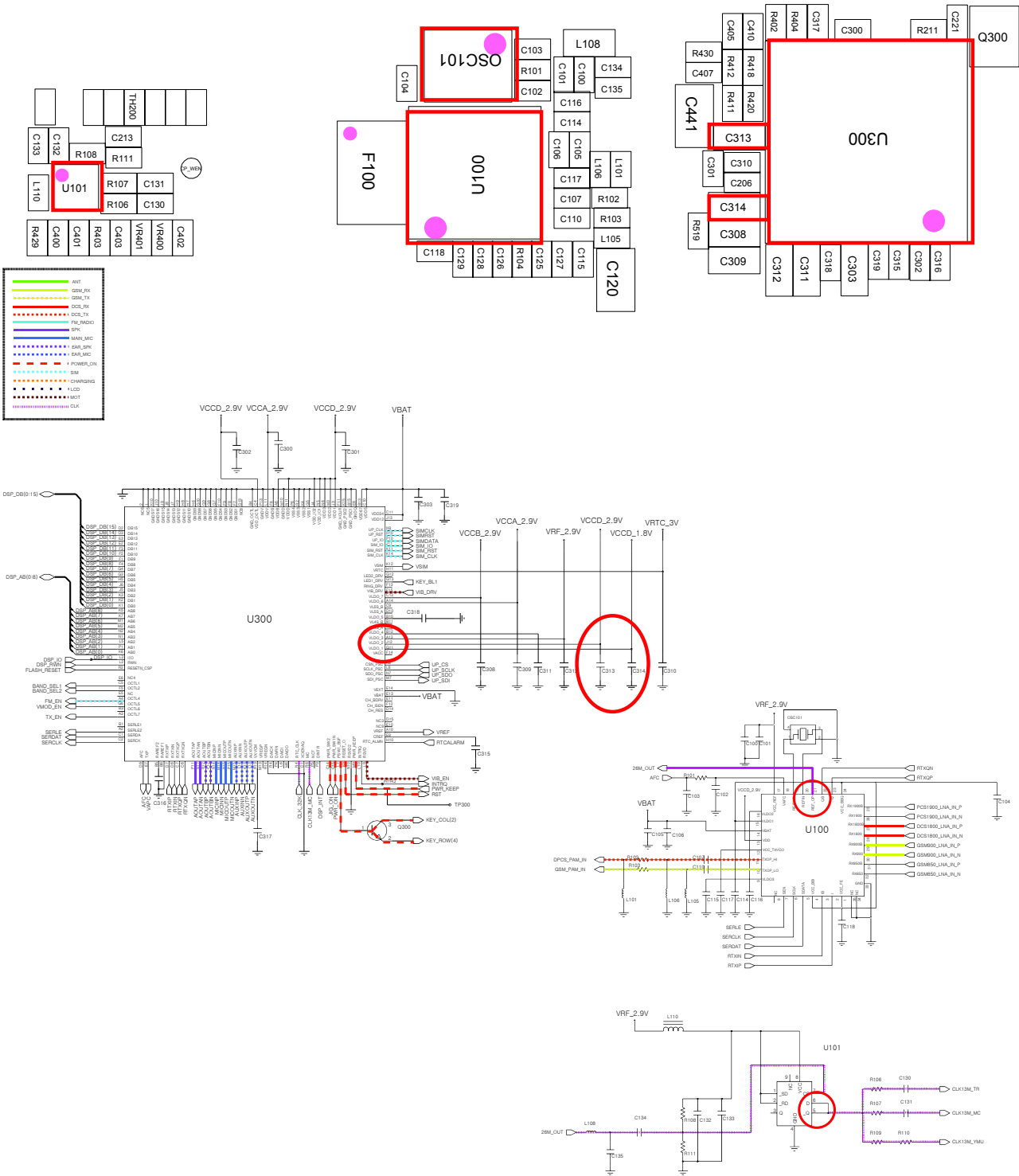
# 10. Flow Chart of Troubleshooting

## 10-1. Baseband

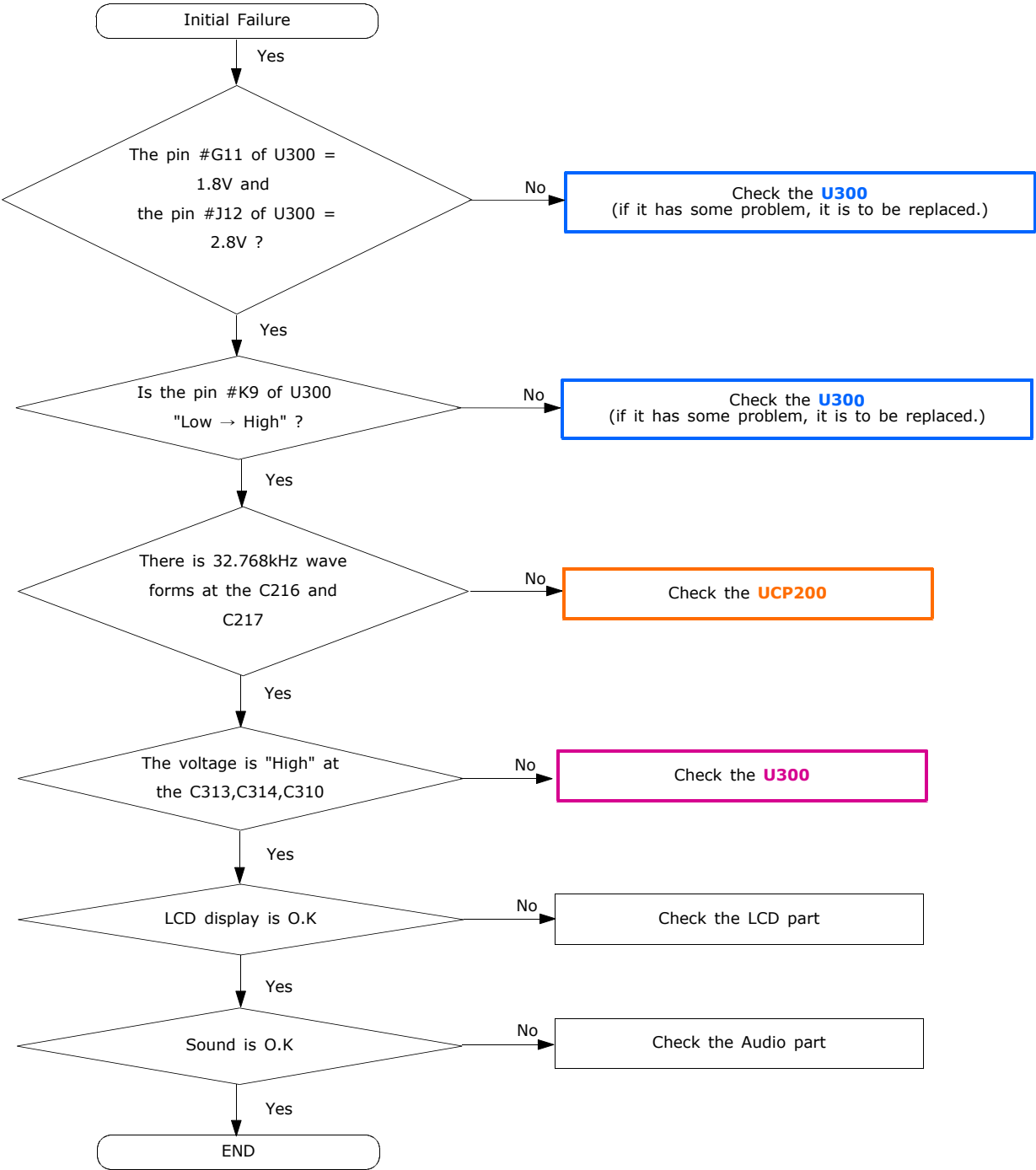
### 10-1-1. Power ON

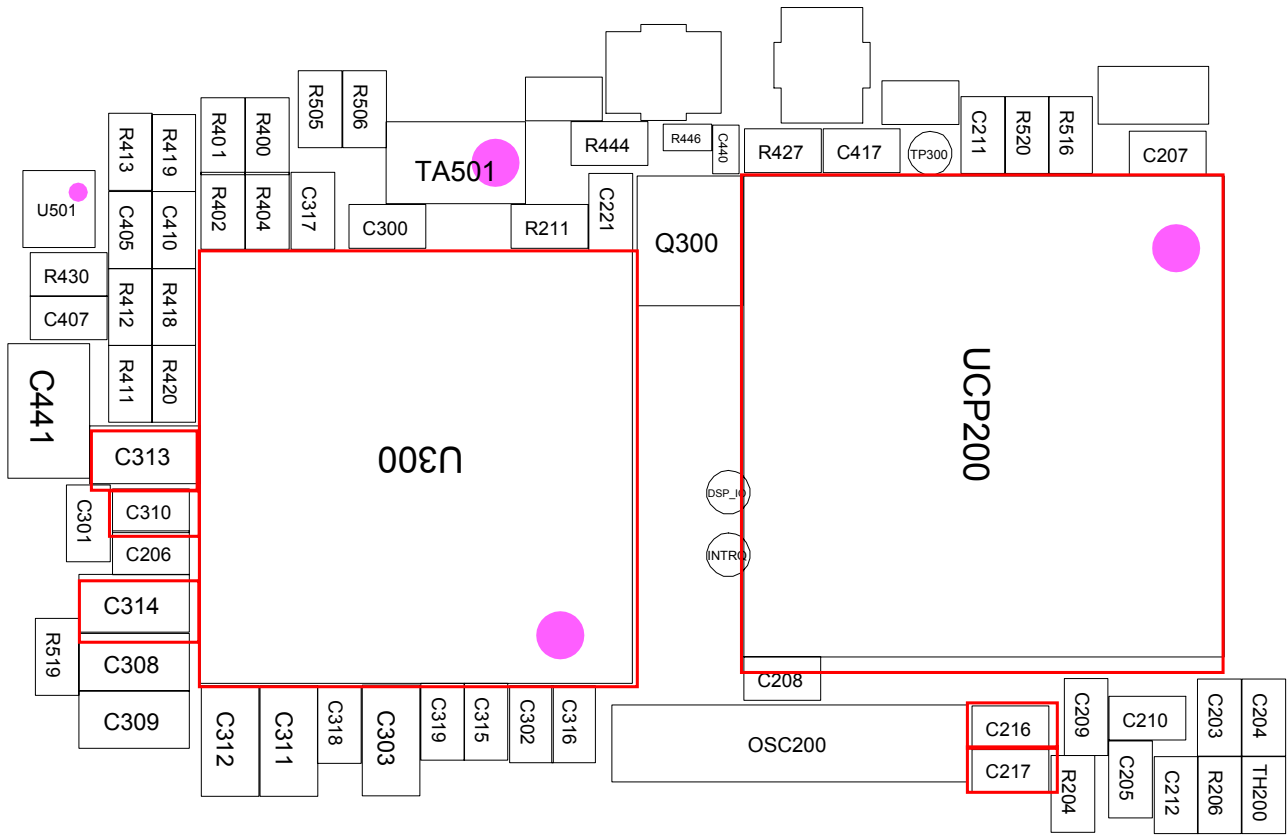


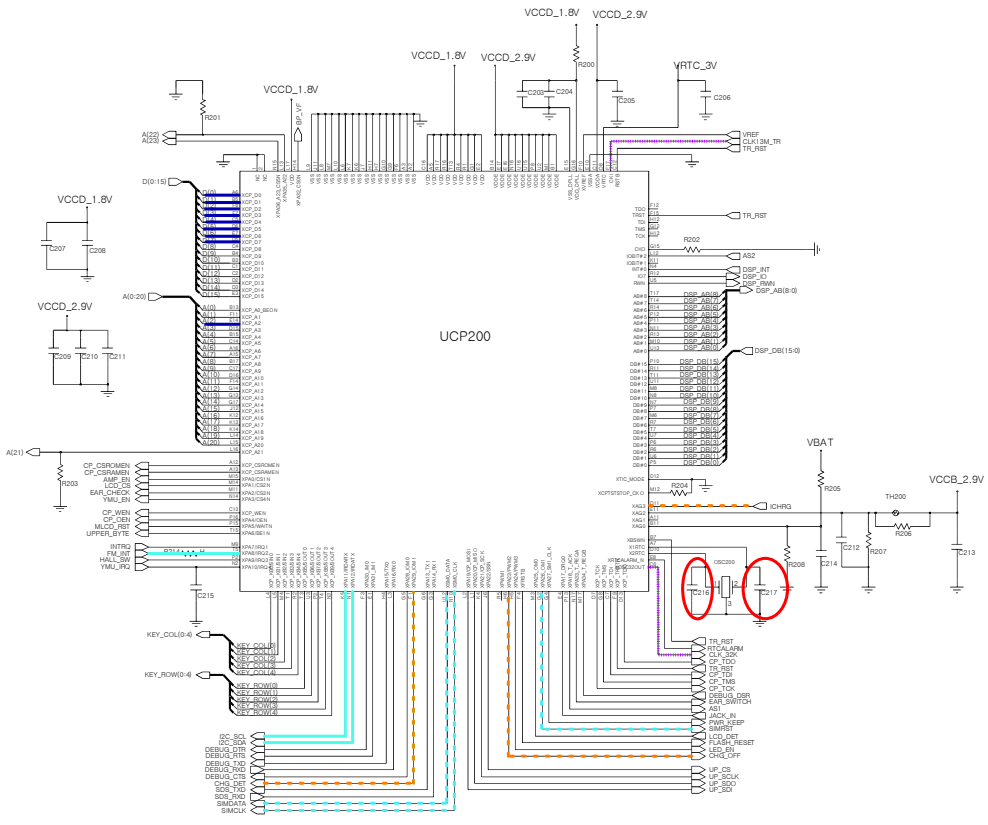
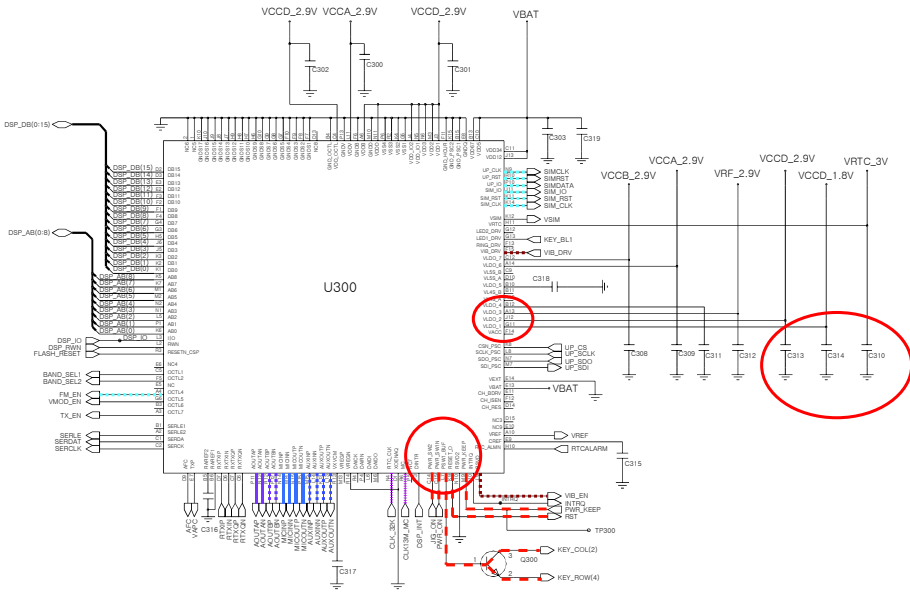
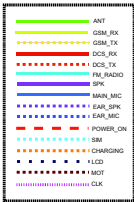
# Flow Chart of Troubleshooting



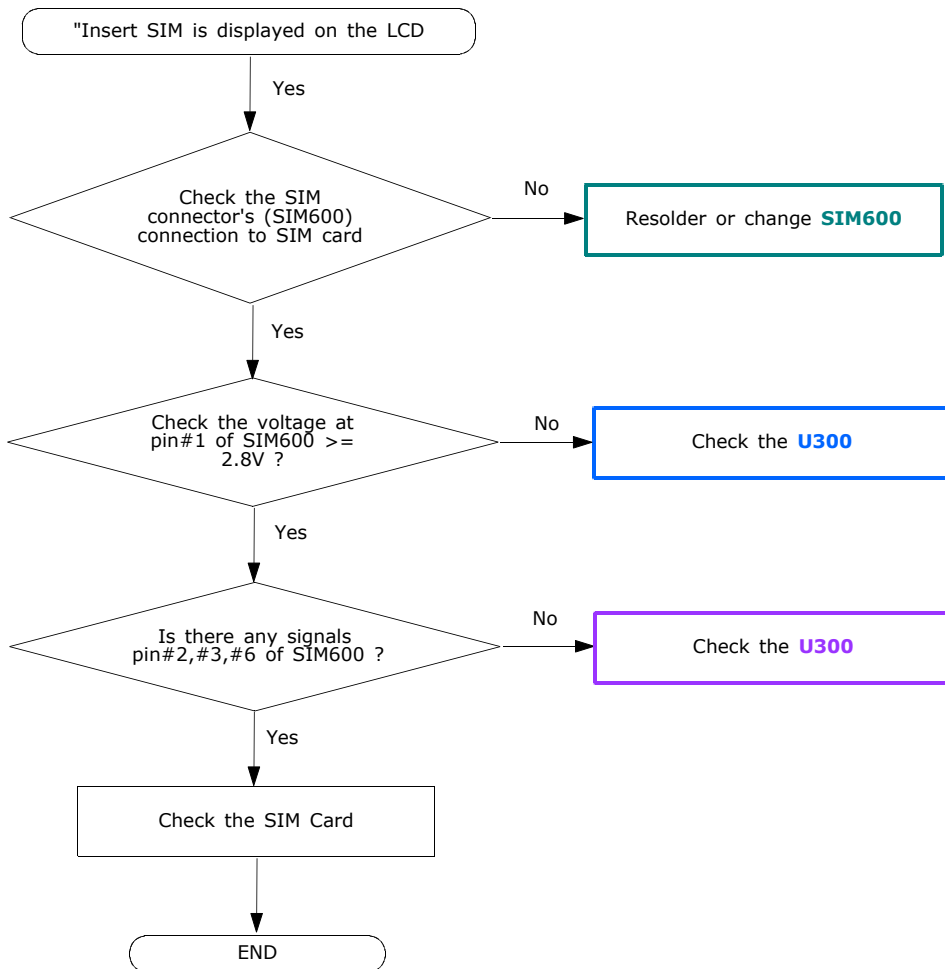
10-1-2. System Initial

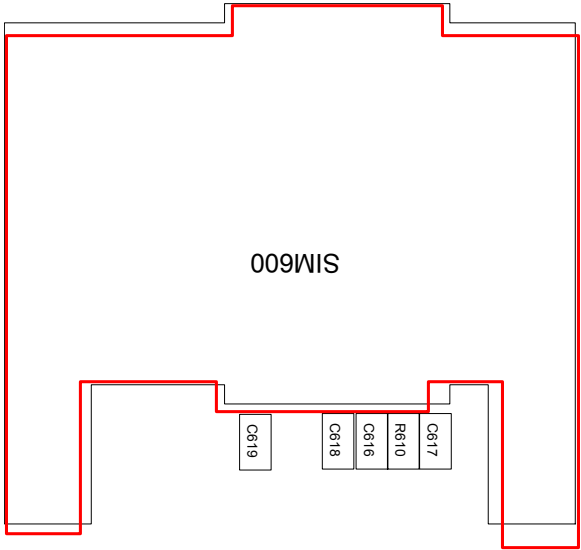
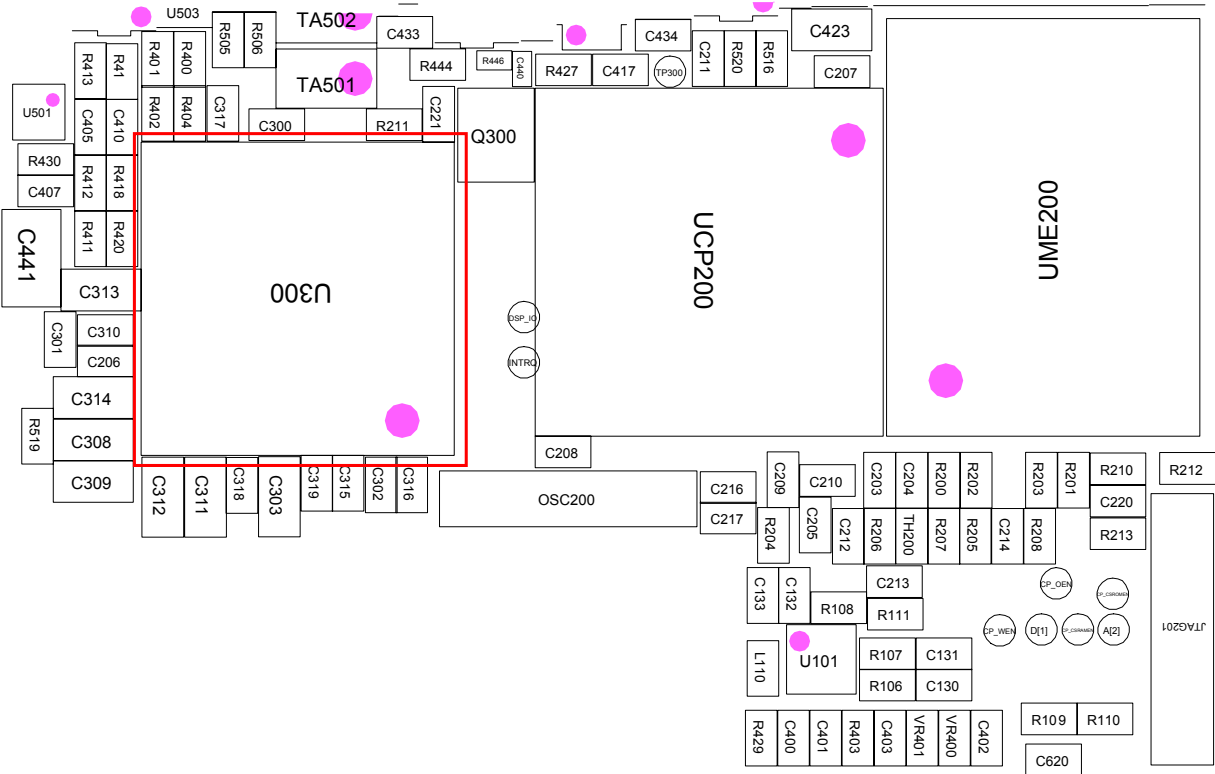




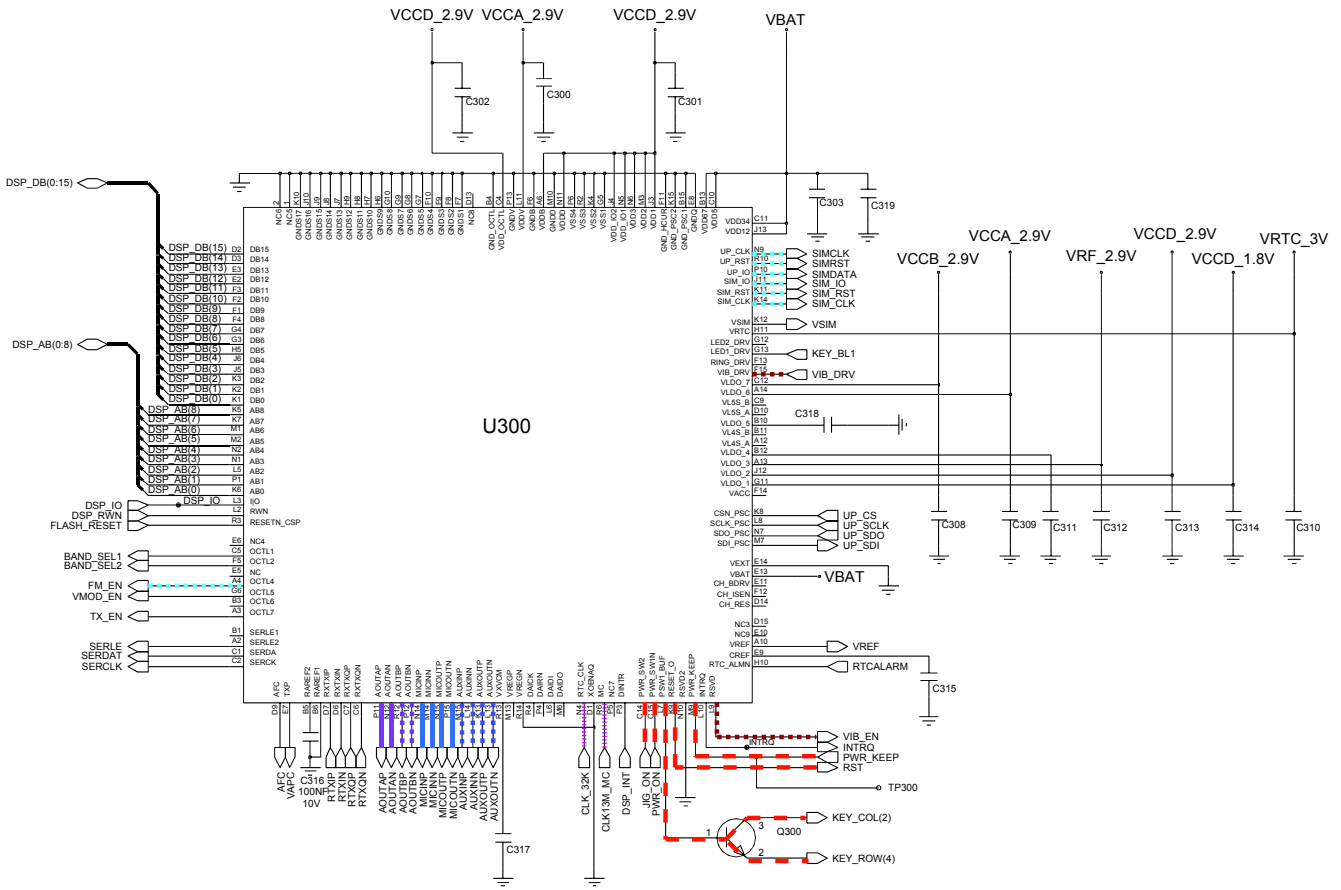
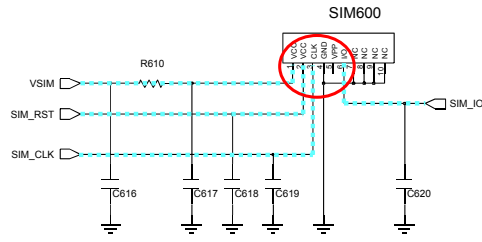
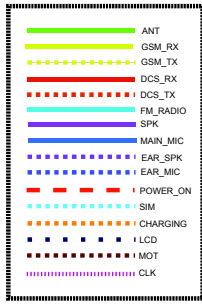


### 10-1-3. Sim Part



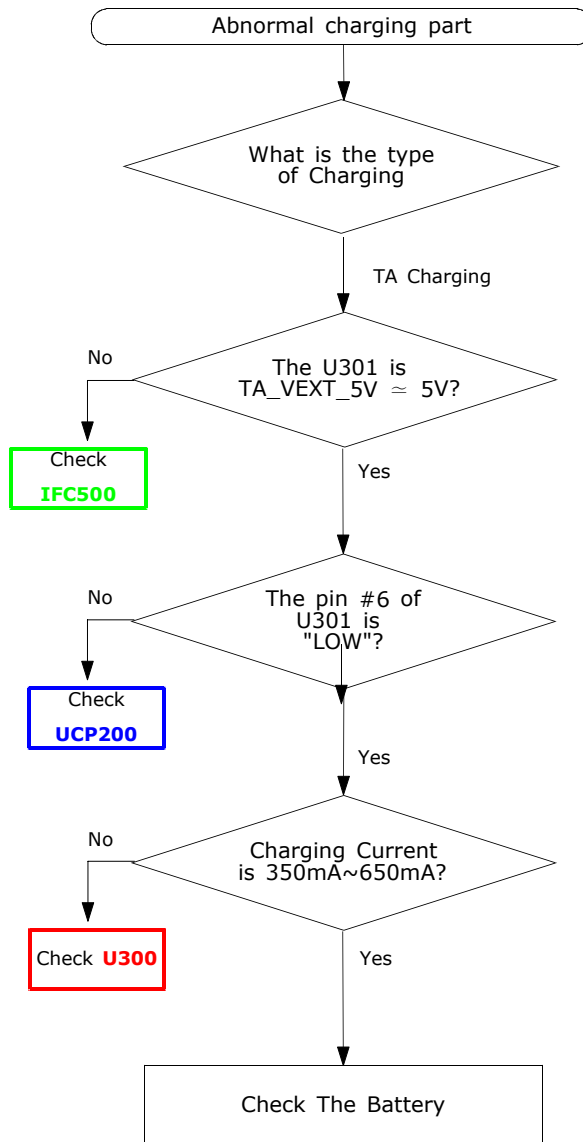


# Flow Chart of Troubleshooting

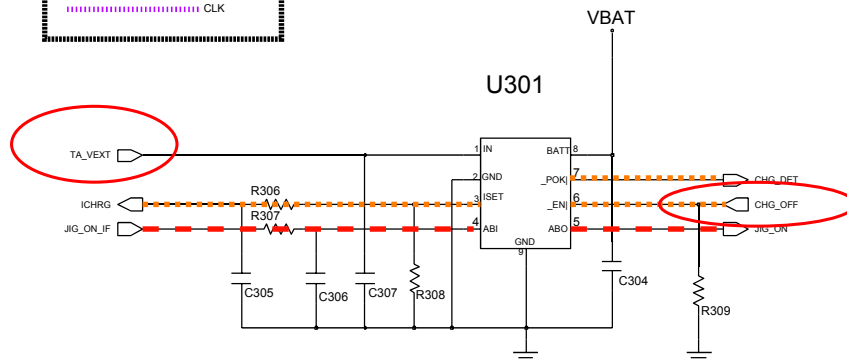
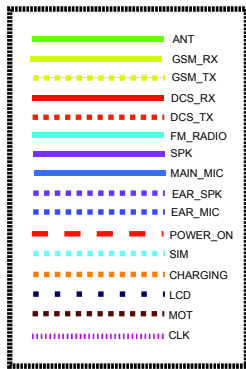
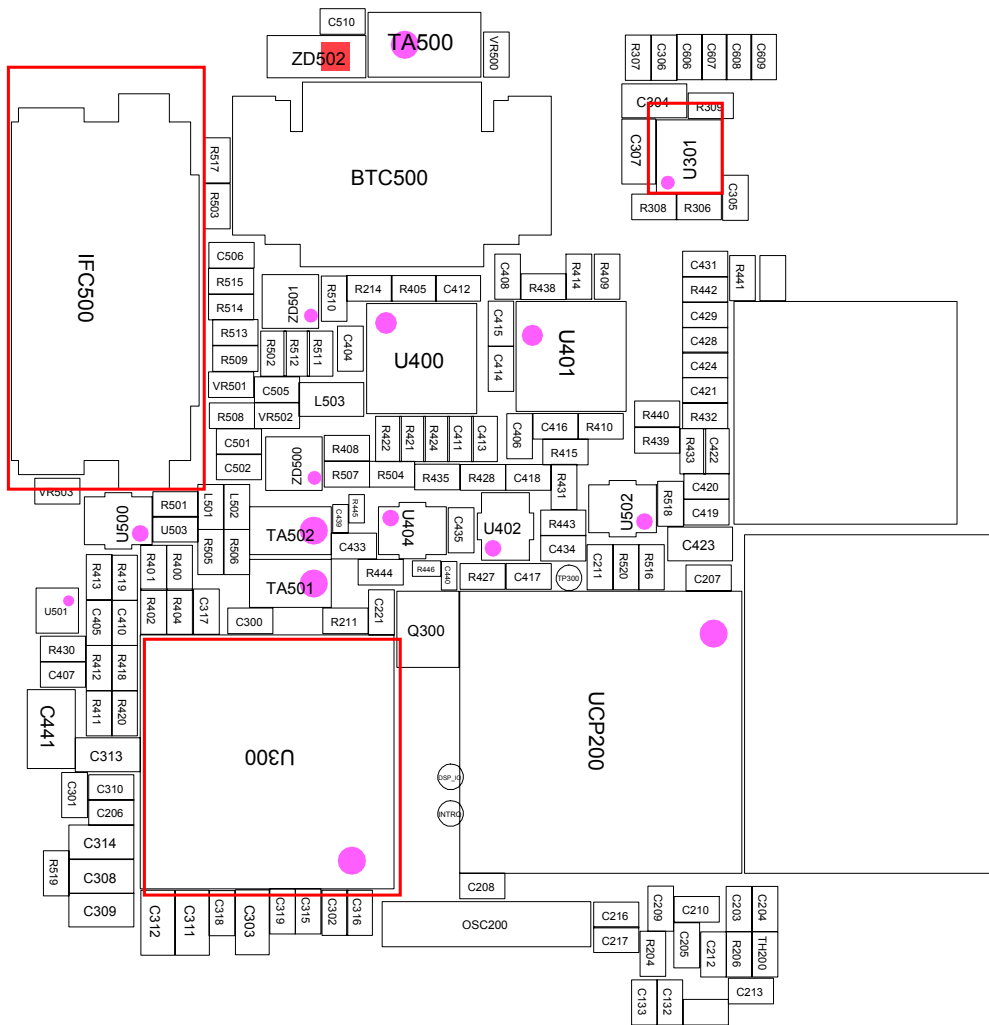




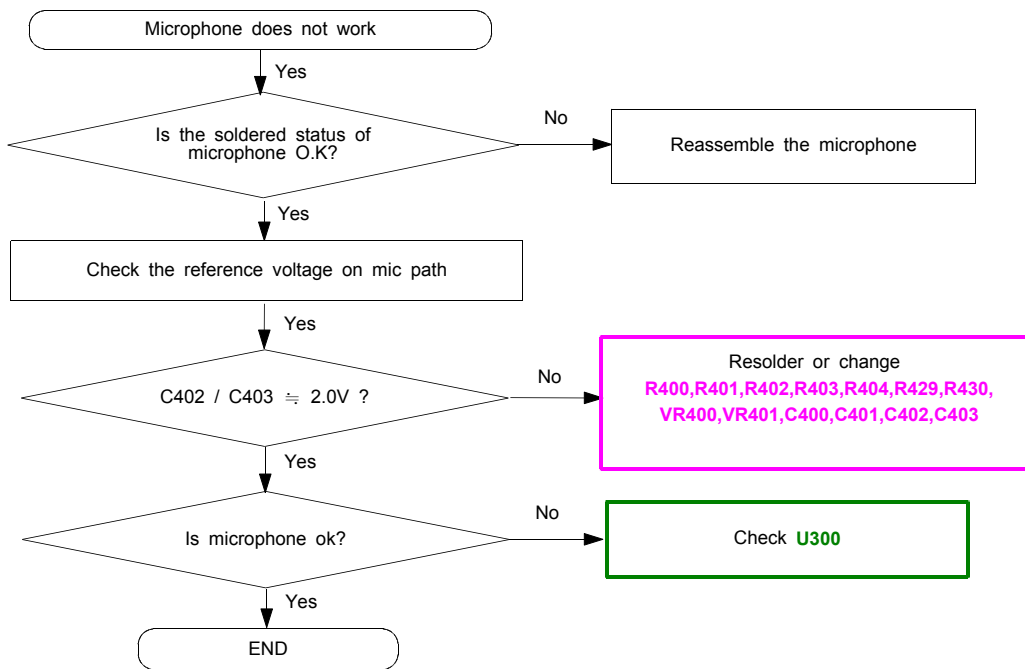
### 10-1-4. Charging Part



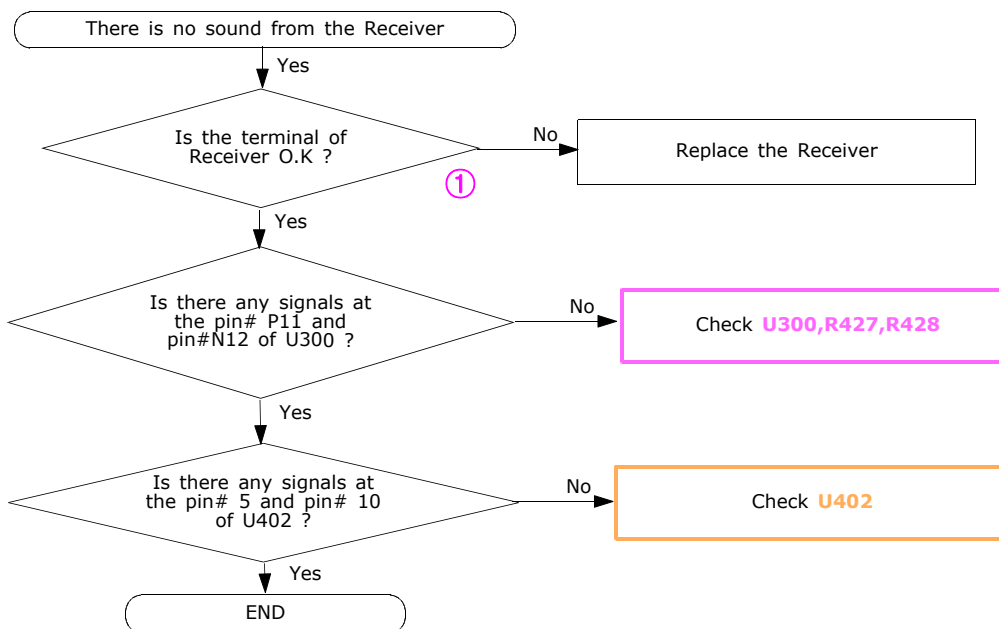
# Flow Chart of Troubleshooting



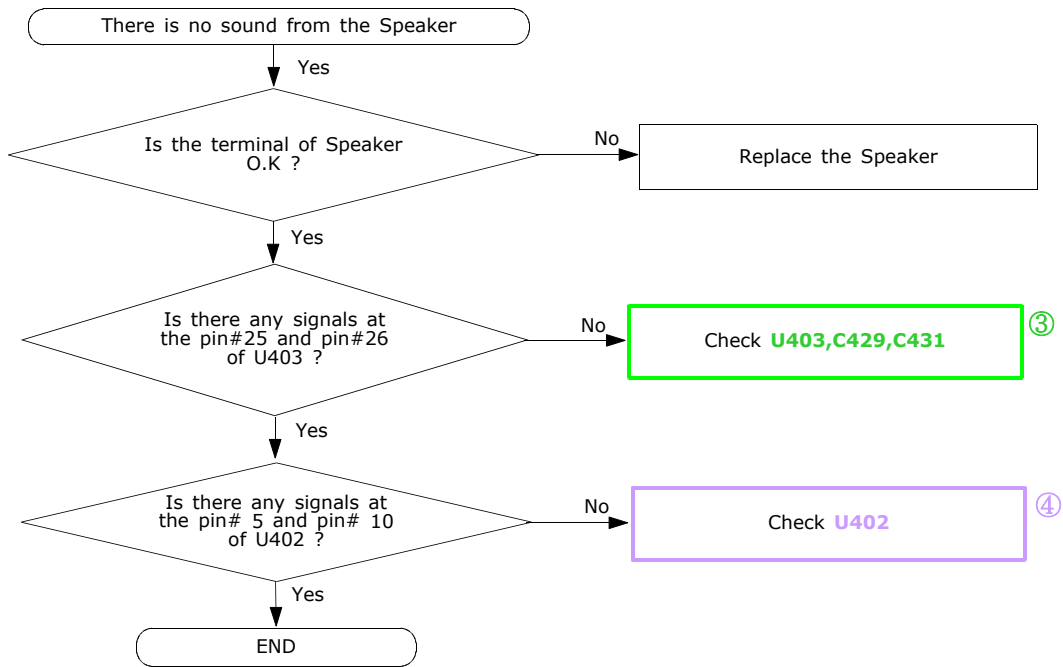
### 10-1-5. Microphone Part

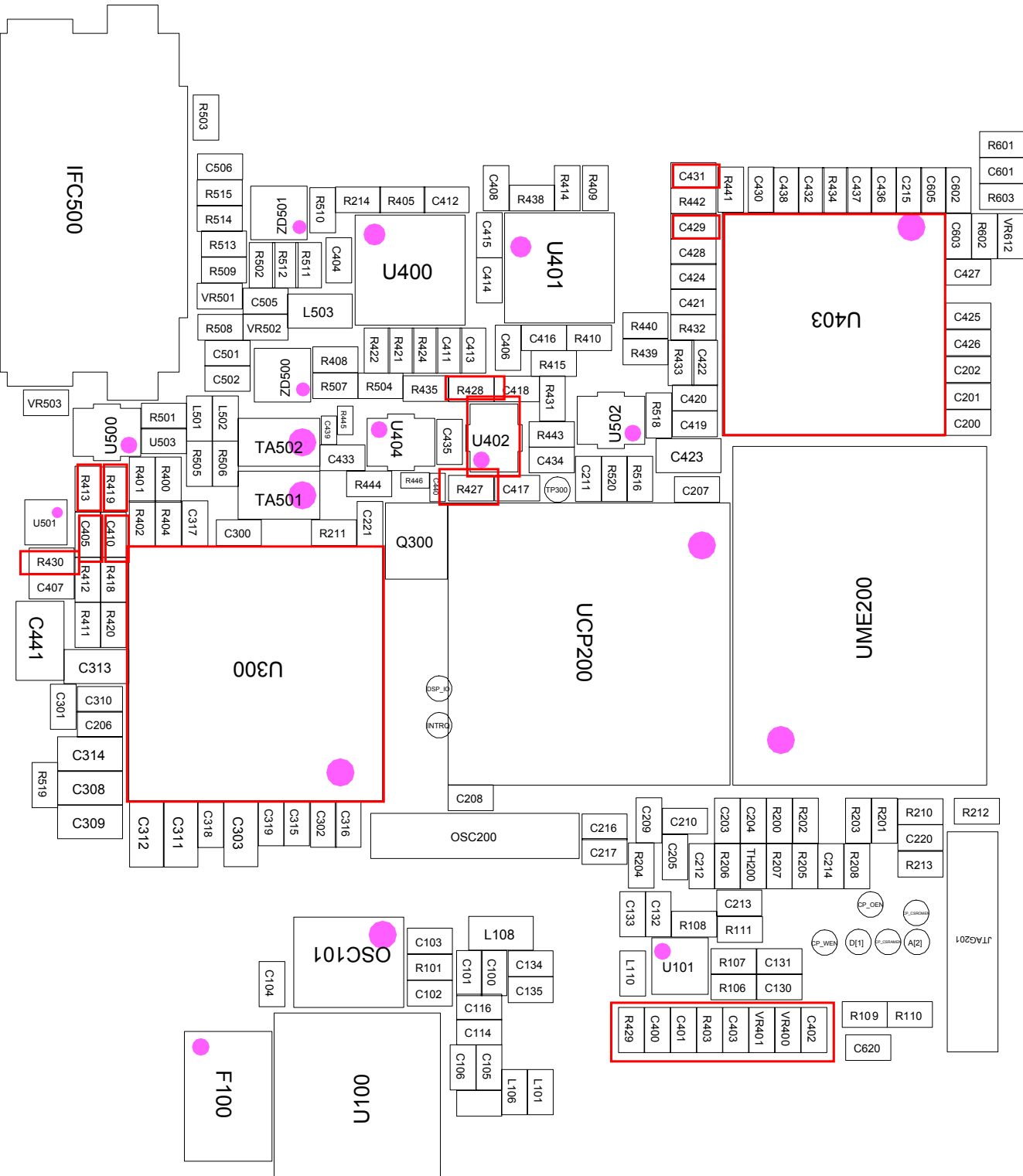


### 10-1-6. Receiver Part

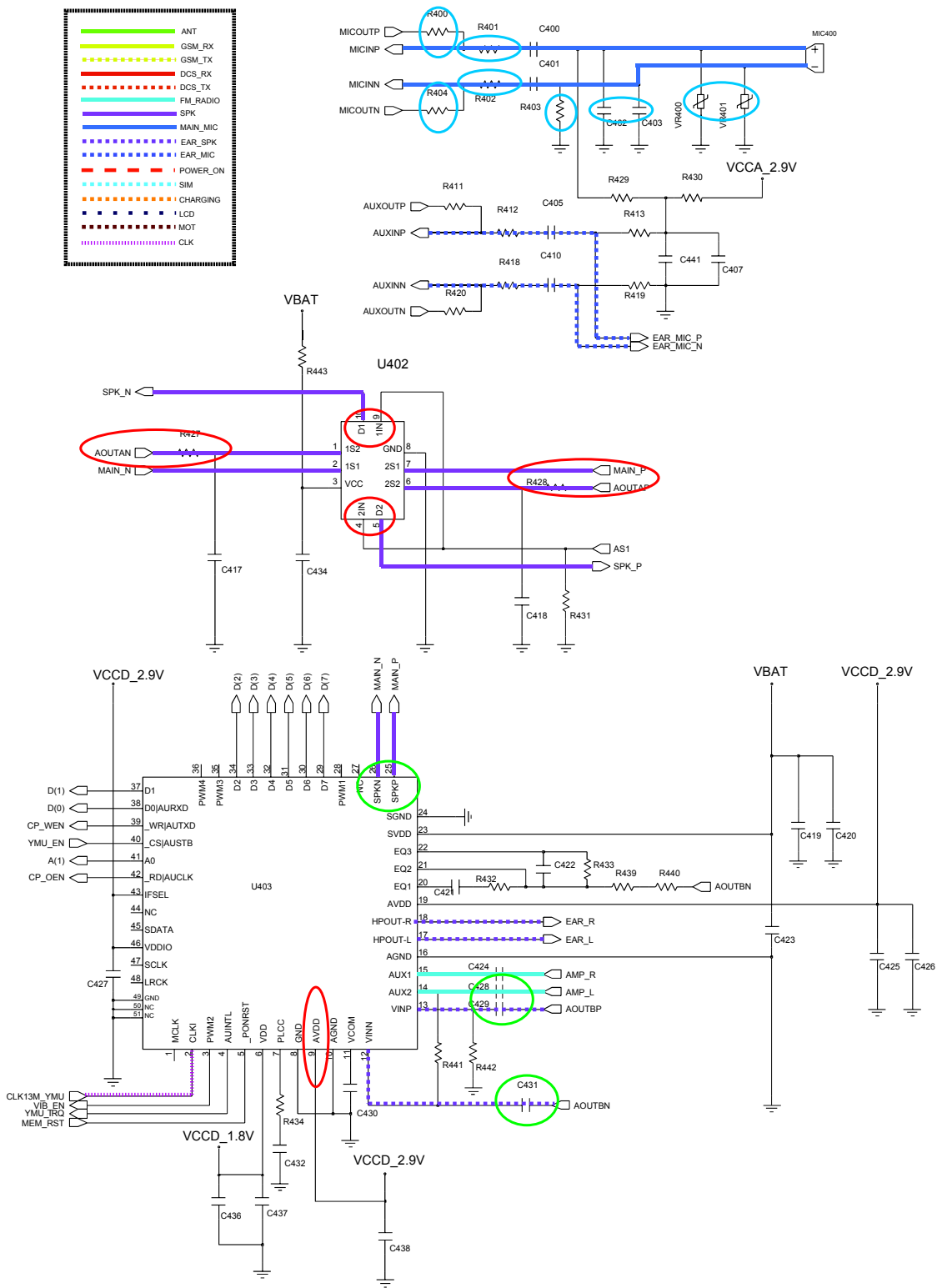
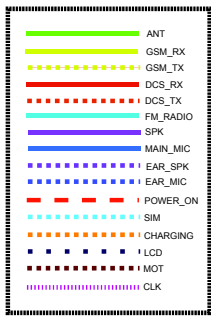


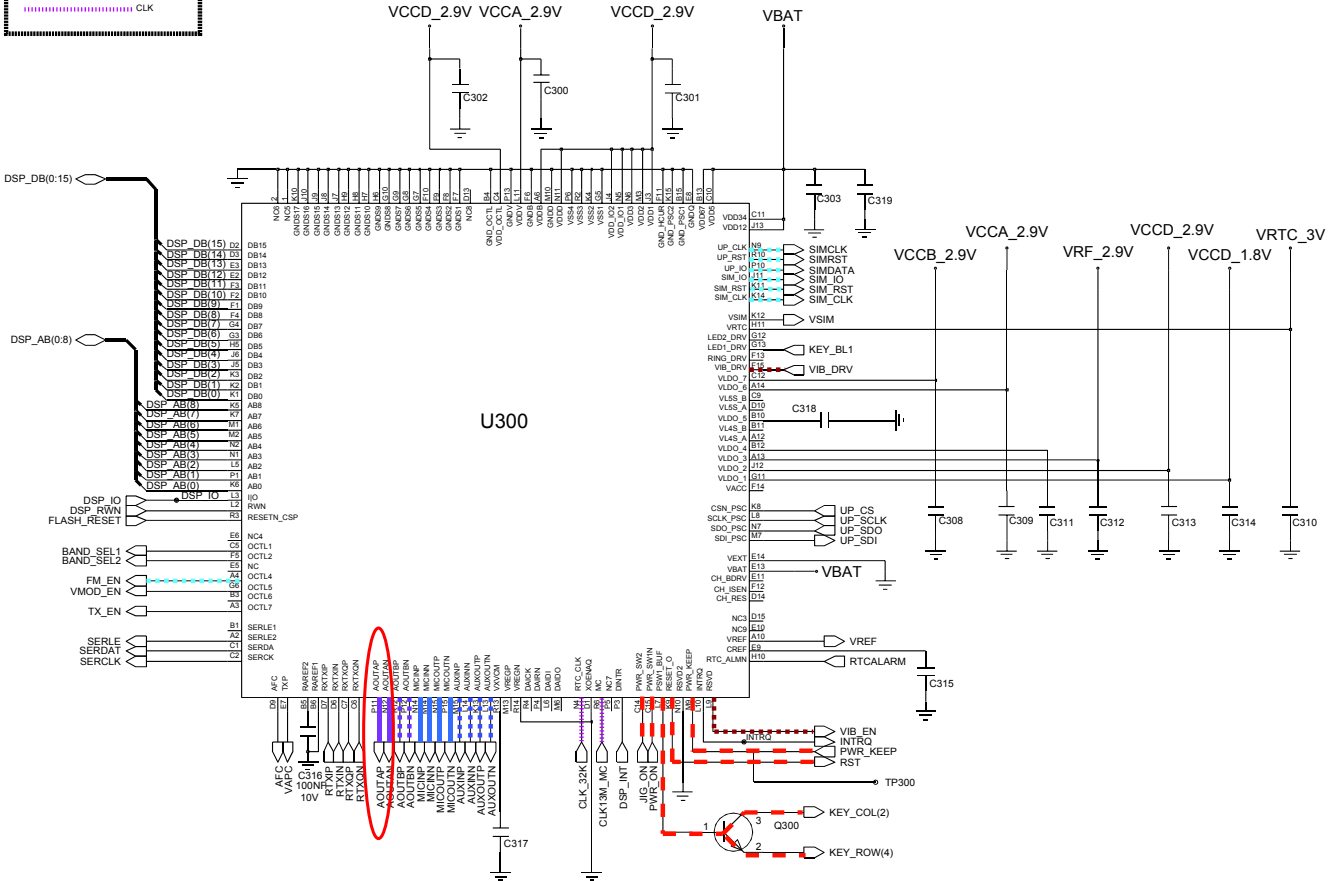
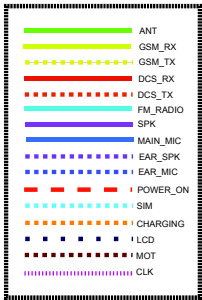
### 10-1-7. Speaker Part



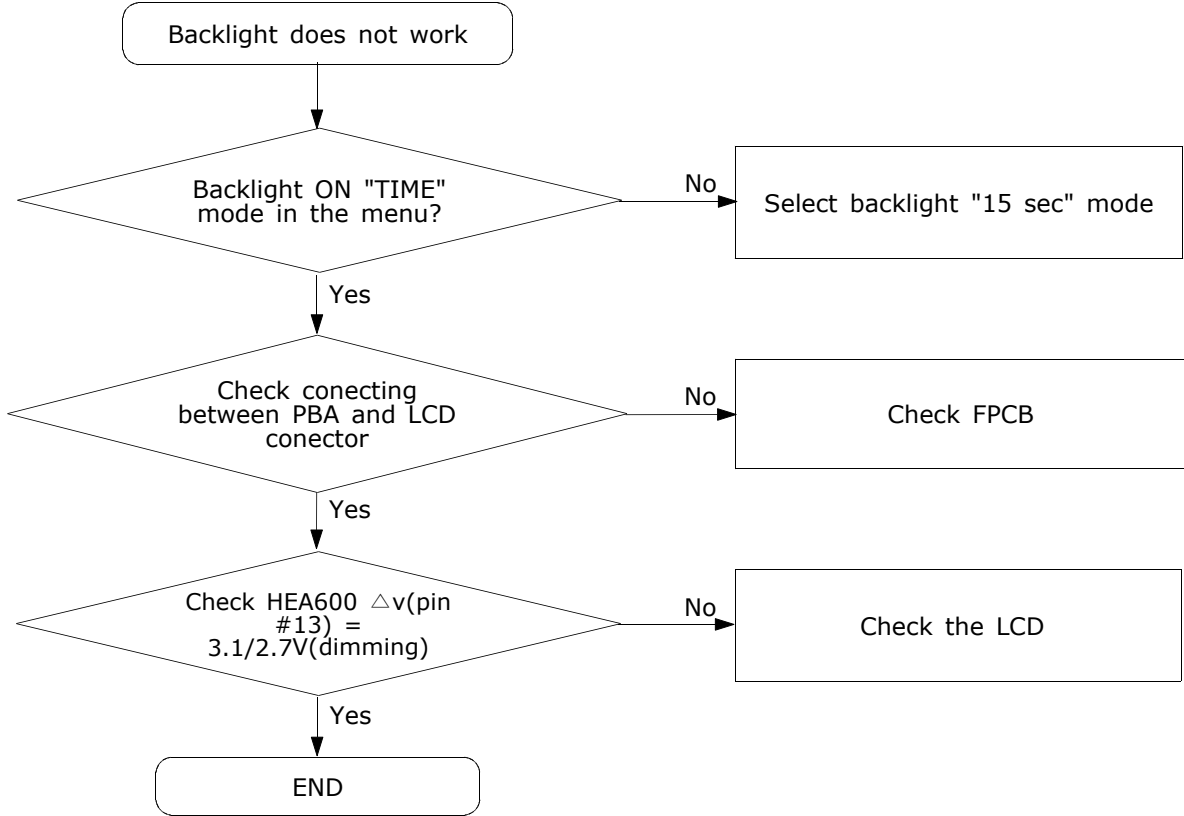


# Flow Chart of Troubleshooting



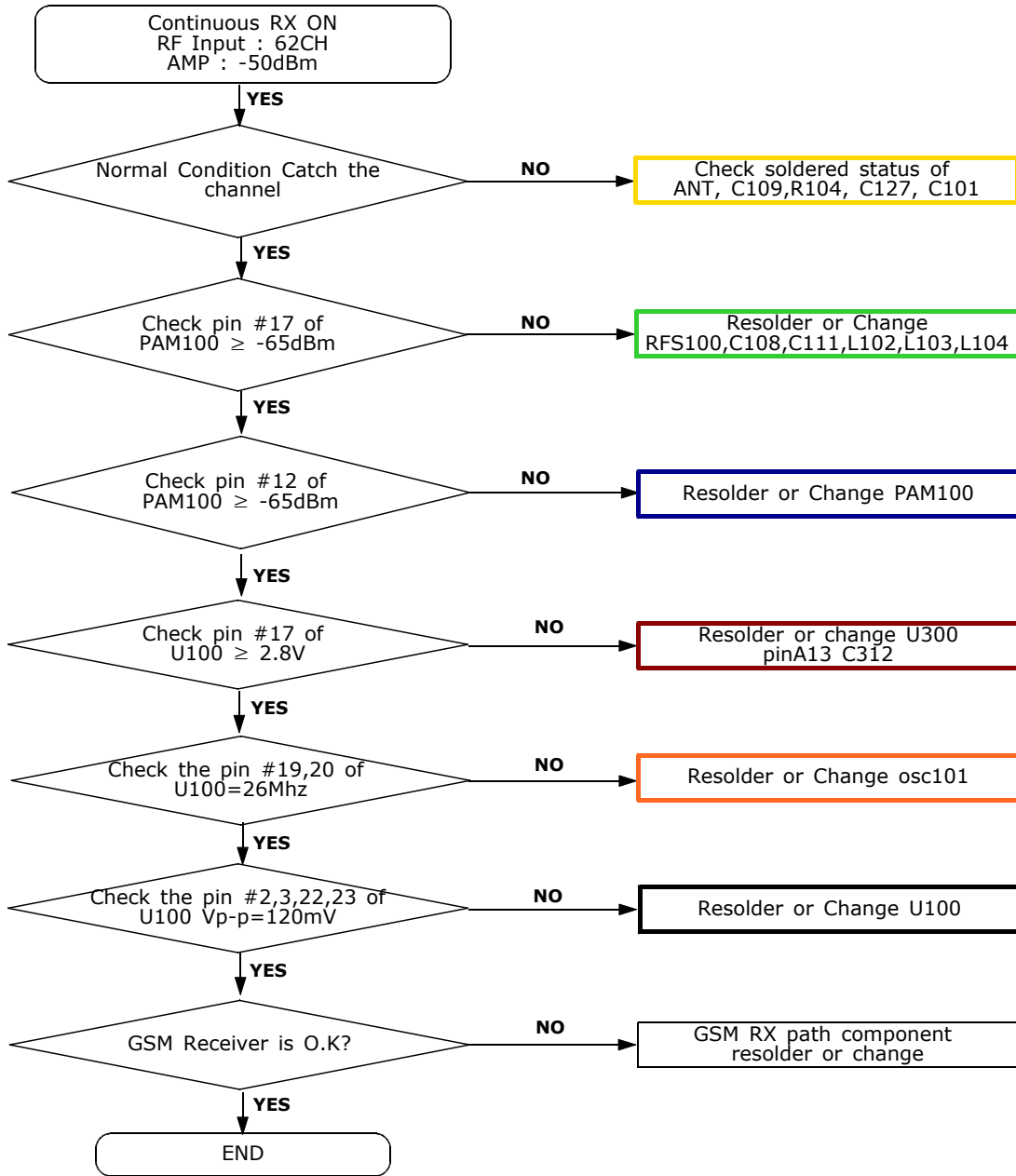


10-1-8. LCD

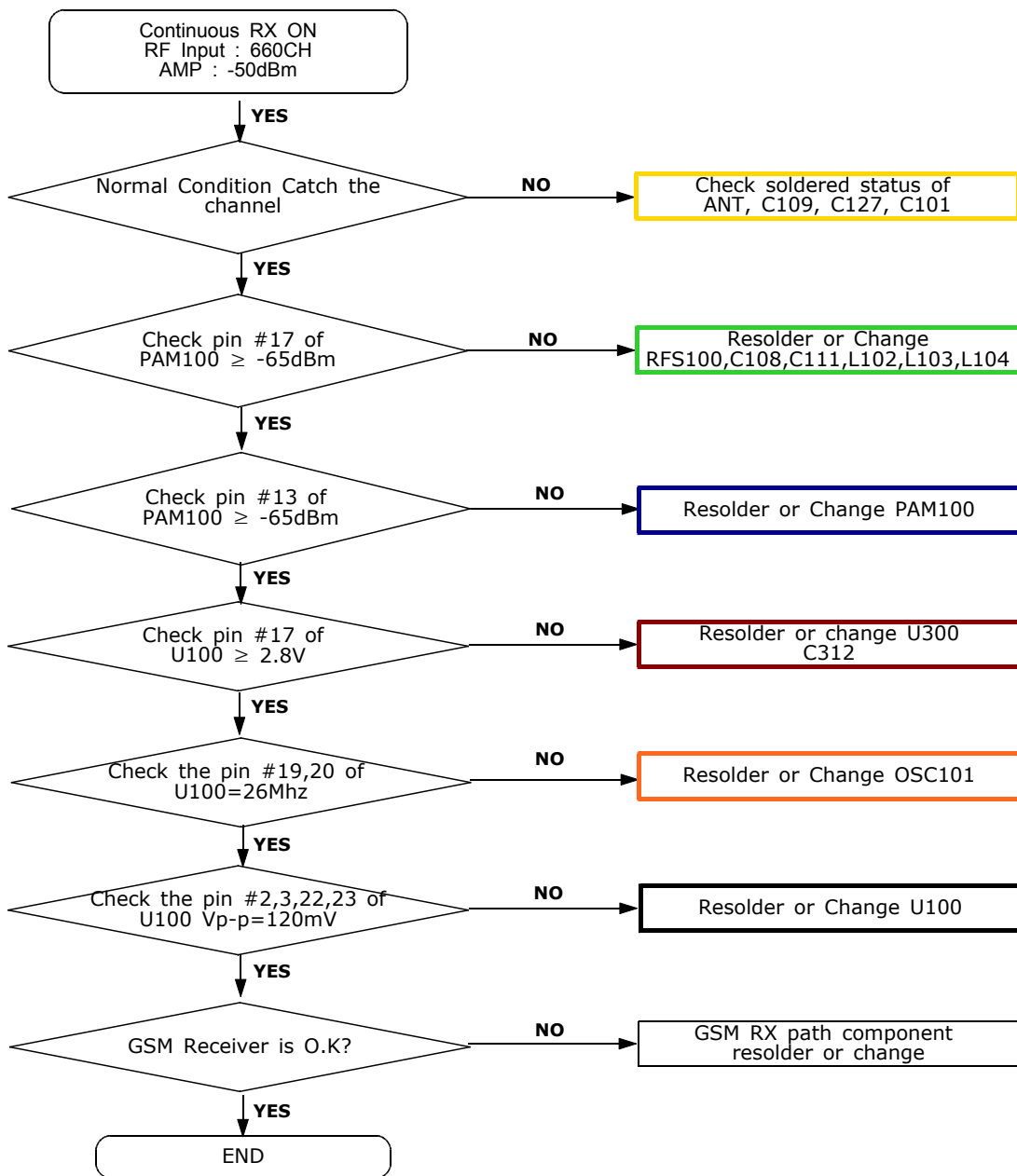




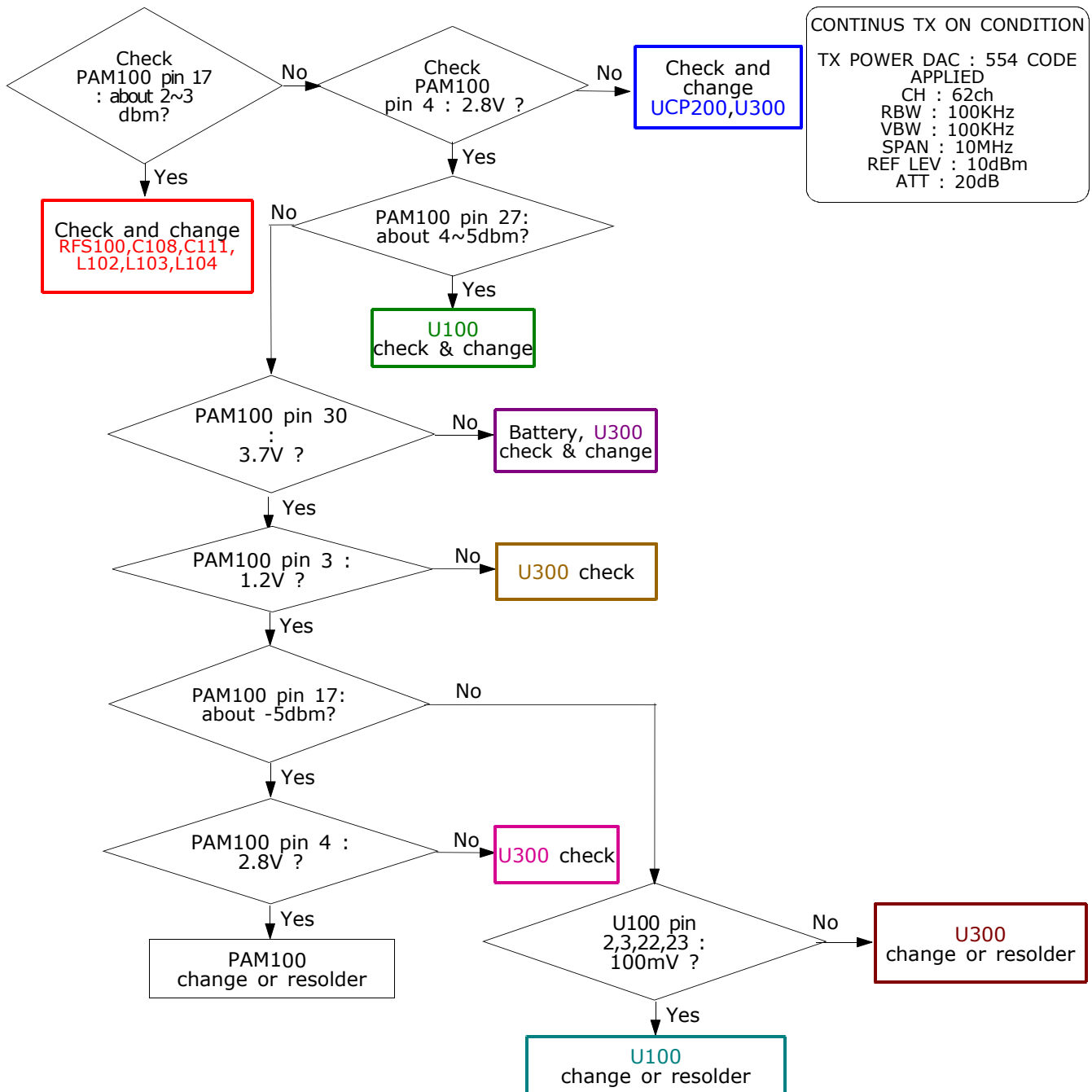
**10-2.RF**  
**10-2-1. EGSM Rx**



10-2-2. DCS Rx

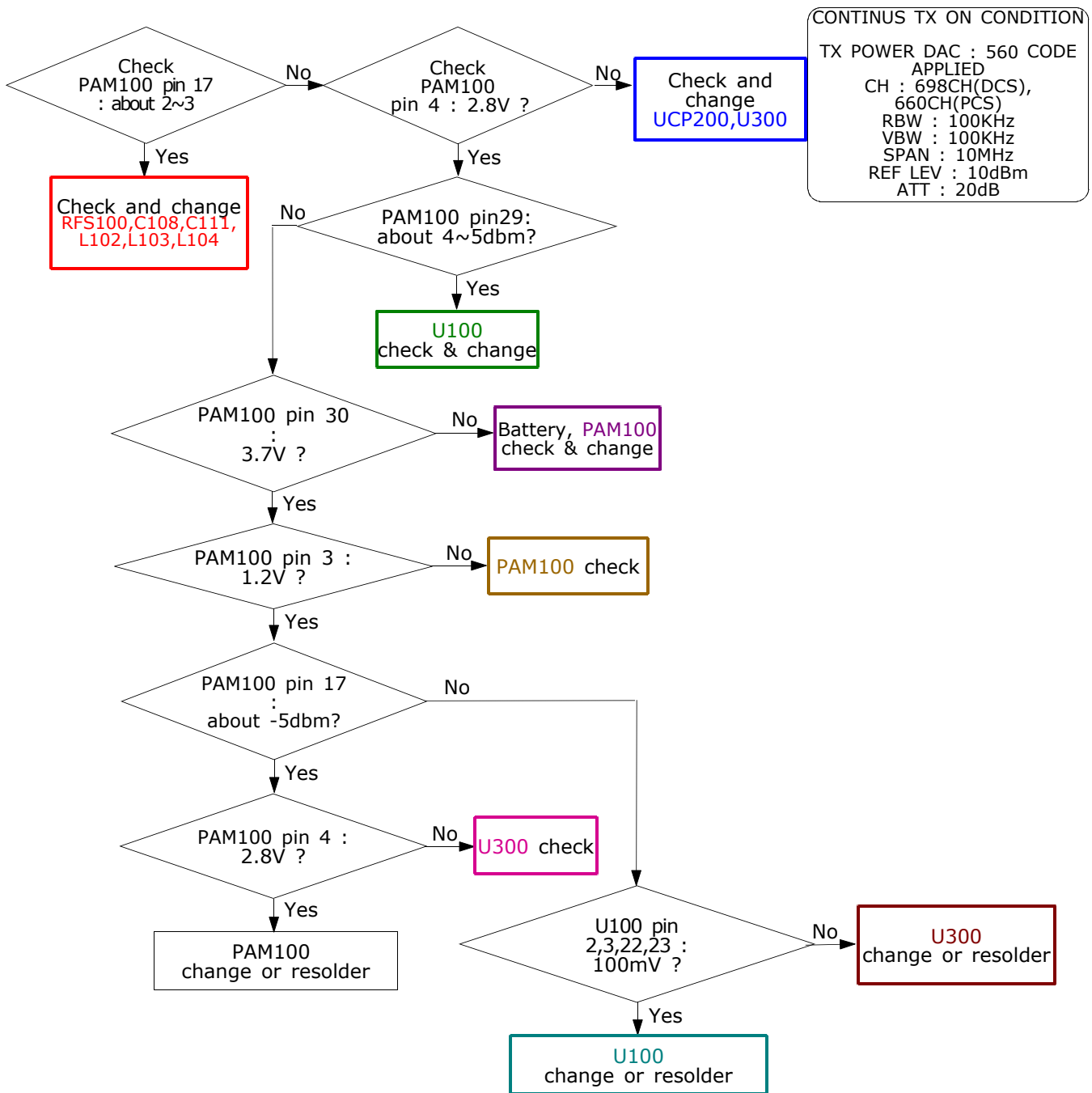


### 10-2-3. EGSM Tx



CONTINUS TX ON CONDITION  
 TX POWER DAC : 554 CODE  
 APPLIED  
 CH : 62ch  
 RBW : 100KHz  
 VBW : 100KHz  
 SPAN : 10MHz  
 REF LEV : 10dBm  
 ATT : 20dB

10-2-4. DCS Tx



# Flow Chart of Troubleshooting

