
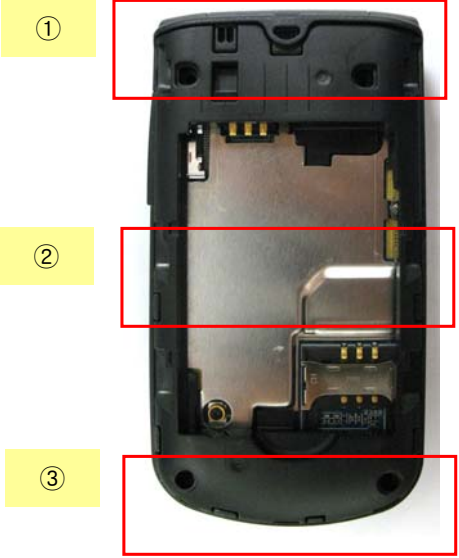
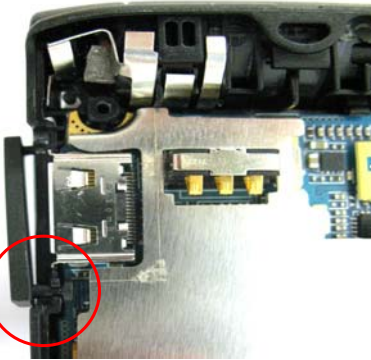
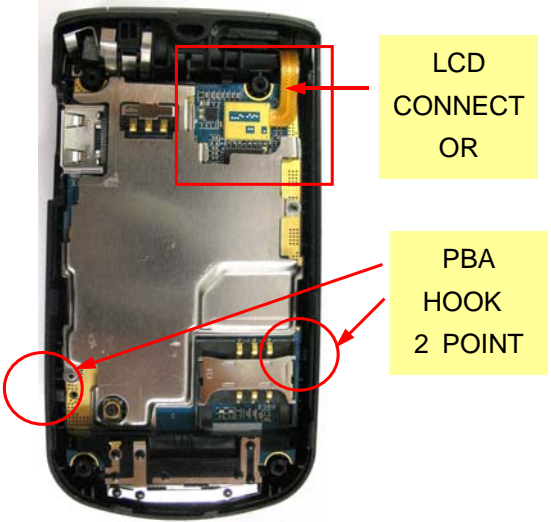


7. Disassembly and Assembly Instructions

7-1. Disassembly

<p>1</p> 	<p>2</p> 
<p>1) Release SCREW 4 POINT at Rear. * Caution 1) Be careful not to make scratch.</p>	<p>1) Disjoint HOOK from up to down. * Caution 1) Be careful Hook damage when you Disjoint a REAR.</p>
<p>3</p>  <p>IF COVER HOOK</p>	<p>4</p>  <p>LCD CONNECT OR</p> <p>PBA HOOK 2 POINT</p>
<p>1) Separate the IF COVER front FRONT.</p>	<p>1) Disjoint LCD CONNECTOR. 2) Separate PBA from FRONT.</p>

5



- 1) Put tweezers to Front hole and Press down a Hinge.
- 2) Separate FRONT and FOLDER ASS'Y during doing NO.1.

※ Caution

- 1) Beware that you do not damage LCD F-PCB.
- 2) Be careful that you do not make scratch when you press down a Hinge.

6



- 1) Remove SCREW CAP using tweezers.(2POINT)
- 2) Release SCREW.

※ Caution

- 1) Be careful not to make scratch and molding damage!

7

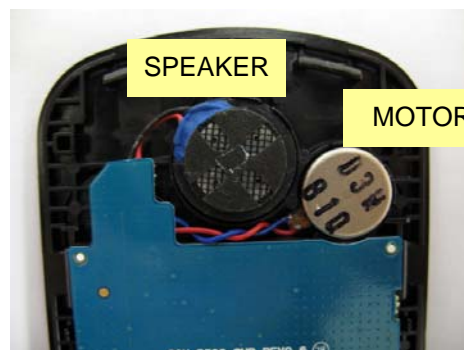


- 1) Separate UPPER from LOWER.
Release a HOOK which locate upside first.

※ Caution

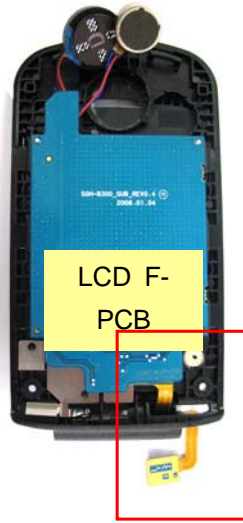
- 1) Be careful Hook damage when you disjoint a UPPER.

8



- 1) Separate MOTOR from the LOWER
- 2) Separate SPEAKER from the LOWER

9



1) Separate a Folder LOWER and LCD MODULE.

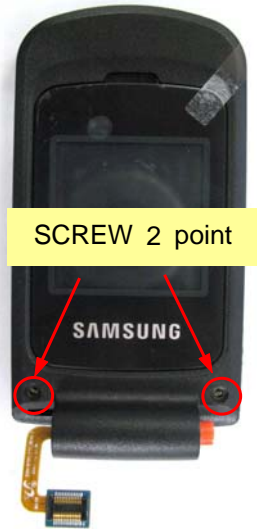
※ **Caution**

- 1) Beware that you do not damage LCD F-PCB.
- 2) Beware that you do not damage F-PCB when you passing F-PCB to hole of LOWER

7-2. Assembly

<p>1</p> 	<p>2</p> 
<p>1) Put LCD F-PCB into the hole of LOWER. 2) Put LCD Ass'y in Folder Lower. ※ Caution</p> <p>1) Be careful not to make scratch and molding damage. 2) Beware that you do not damage F-PCB when you insert F-PCB to hole of LOWER</p>	<p>1) Put the SPEAKER on the UPPER ※ Caution</p> <p>1) Arrange WIRE not to be interfered with other components.</p>
<p>3</p> 	<p>4</p> 
<p>1) Twist the MOTOR wire twice, then put into the LOWER ※ Caution</p> <p>1) Arrange WIRE not to be interfered with other components.</p>	<p>1) Assemble Folder Lower and Folder Upper from upside. ※ Caution</p> <p>1) Be careful not to make scratch and molding damage. 2) Check GAP is exist after finish assembly.</p>

5



- 1) Screw up two screws at FOLDER LOWER.
 - 2) Put in screw caps.
- ※ **Caution**
- 1) Be careful not to make scratch and molding damage!

6



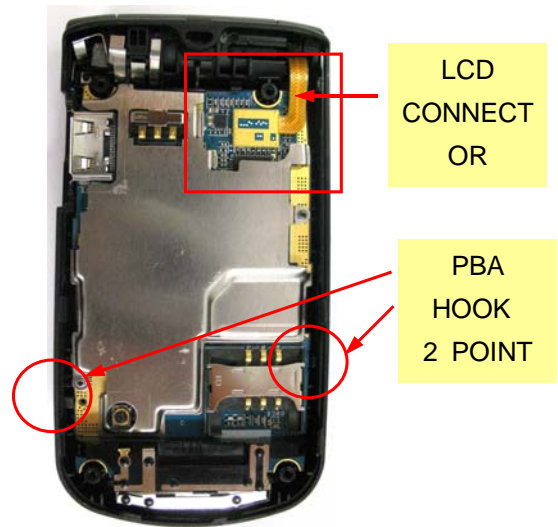
- 1) Insert F-PCB to hole of FRONT.
 - 2) Assemble while pressing the hinge.
- ※ **Caution**
- 1) Beware that you do not damage F-PCB when you insert F-PCB to hole of FRONT
 - 2) Open and close a folder 2~3 times to Check there is a problem or not.

7



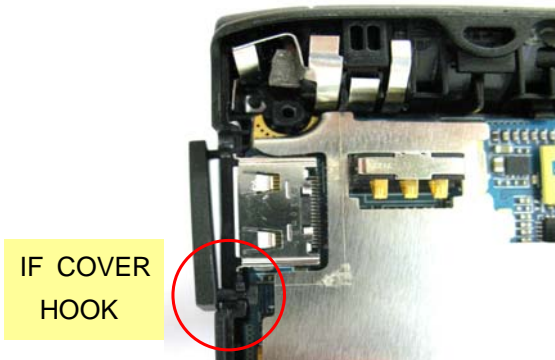
- 1) Set KEYPAD on the FRONT.
- ※ **Caution**
- 1) Check the KEYPAD's guide hole.

8



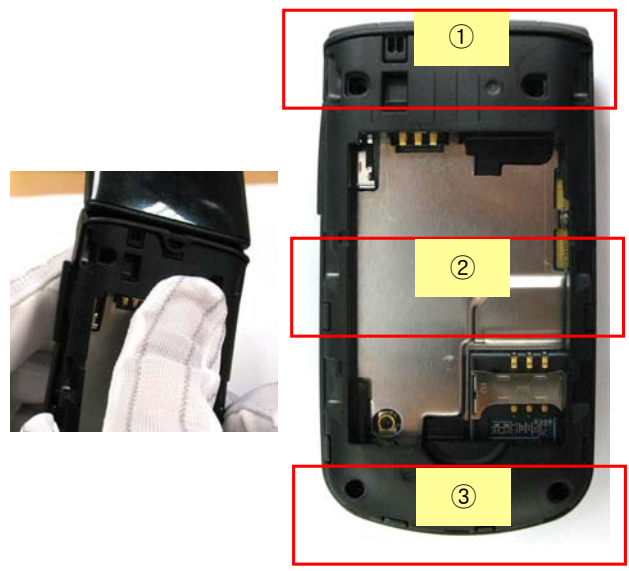
- 1) Set a PBA.
 - 2) Connect RF CONNECTOR.
- ※ **Caution**
- 1) Be careful not to make scratch and molding damage!

9



1) Set the IF COVER on the FRONT.

10



- 1) Assemble REAR and FRONT ass'y from upside.
- ※ **Caution**
- 1) Be careful not to make scratch and molding damage!
- 2) Check GAP is exist after finish assembly.

11



- 1) Attach lower screw sheet.
- ※ **Caution**
- 1) Be careful not to make scratch and molding damage!