

7. Disassembly and Assembly Instructions

7-1. Disassembly

1



1) Release SCREW 4 POINT at Rear

※ **Caution**

1) Be careful not to make scratch and molding damage!

2

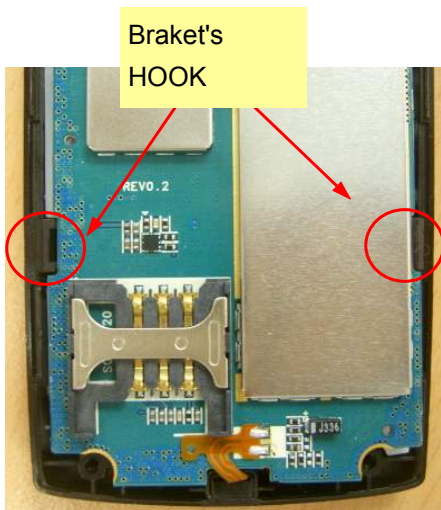


1) Disjoint HOOK from down to up.

※ **Caution**

1) Be careful not to make scratch and molding damage!

3

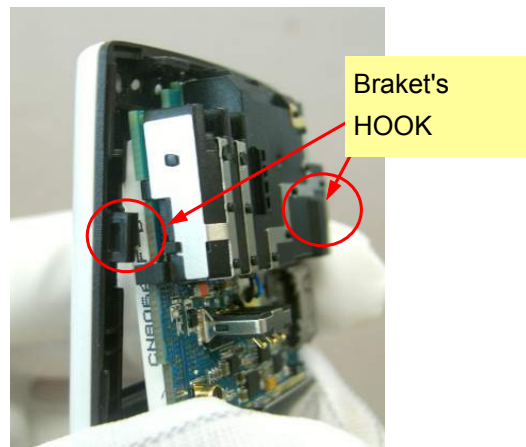


1) Disjoint the Low Bracket's HOOK (2point)

※ **Caution**

1) Be careful not to make scratch and molding damage!

4



1) Disjoint the HIGH Bracket's HOOK (2 point)

※ **Caution**

1) Be careful not to make scratch and molding damage!

5

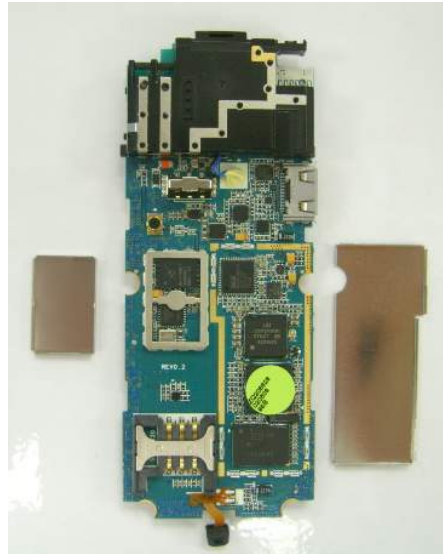


1) Disassembled PBA and front cover

※ **Caution**

- 1) Be careful not to make scratch and molding damage!
- 2) Beware that you do not damage MIC F-PCB.

6



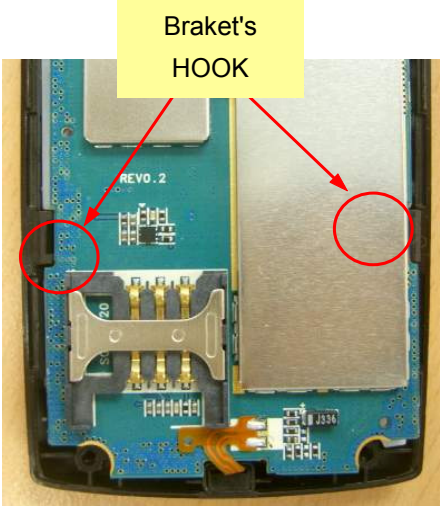
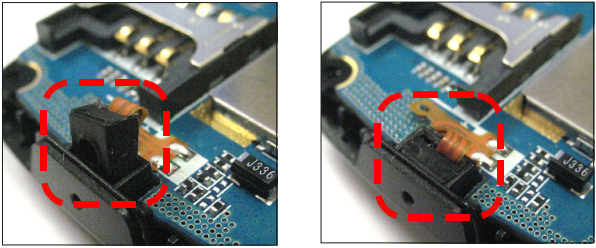


1) Disassembled PBA and shieldcan.

※ **Caution**

- 1) Beware that you do not damage PBA.

7-2. Assembly

<p>1</p> 	<p>2</p> 
<p>1) Set a PBA on the FRONT. ※ Caution 1) Be careful not to make scratch and molding damage!</p>	<p>1) Put the PBA on the FRONT. ※ Caution 1) Be careful not to make scratch and molding damage!</p>
<p>3</p> 	<p>4</p> 
<p>1) Assemble the FRONT's hook 2point. ※ Caution 1) Be careful not to make scratch and molding damage! 2) Beware that you do not damage MIC F-PCB.</p>	<p>1) Put the MIC on the FRONT. ※ Caution 1) Be careful not to make scratch and molding damage! 2) Beware that you do not damage MIC F-PCB.</p>

5



- 1) Assemble the hooks on the top of the rear.
- ※ **Caution**
- 1) Be careful not to make scratch and molding damage!

6



- 1) Assemble the hook on the side of the rear.
- ※ **Caution**
- 1) Be careful not to make scratch and molding damage!

7



- 1) Assemble the hook on the other side of the rear.
- ※ **Caution**
- 1) Be careful not to make scratch and molding damage!

8



- 1) Assemble the last hook on the bottom of the rear.
- ※ **Caution**
- 1) Be careful not to make scratch and molding damage!

9



1) Drivers 4 screws on the REAR.

※ **Caution**

1) Be careful not to make scratch and molding damage!