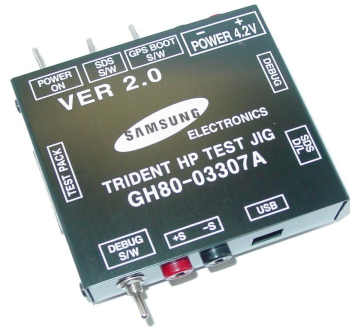

4. Array course control



Test Jig (GH80-03307A)



**Test Cable
(GH39-00892A/GH39-00895A)**



RF Test Cable (GH39-00397A)

Software Downloading

4-1. Downloading Binary Files

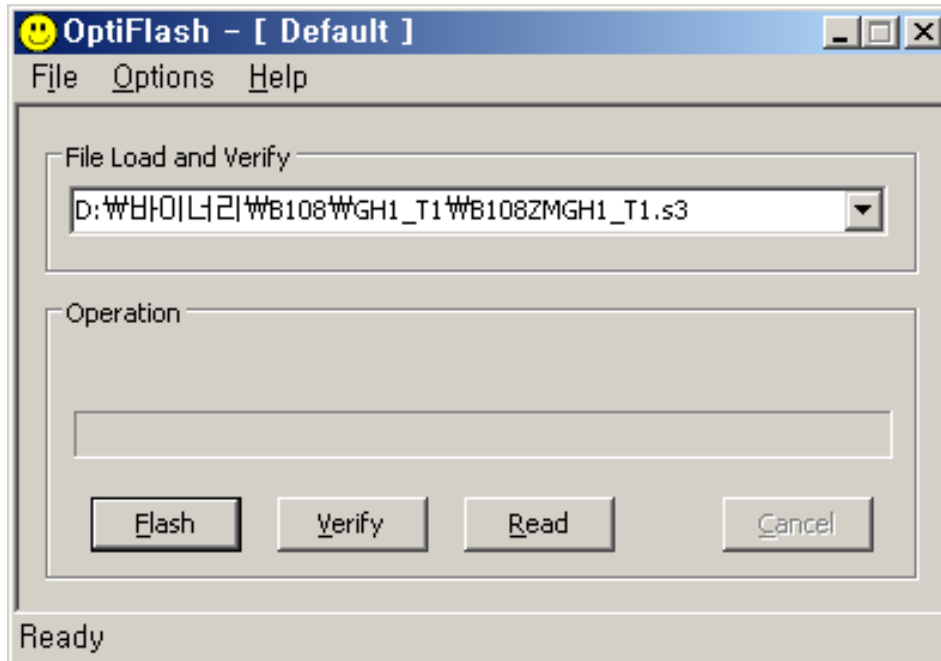
- Three binary files for downloading B200.
 - B200XXYY.s3 : Main source code binary.

4-2. Pre-requisite for Downloading

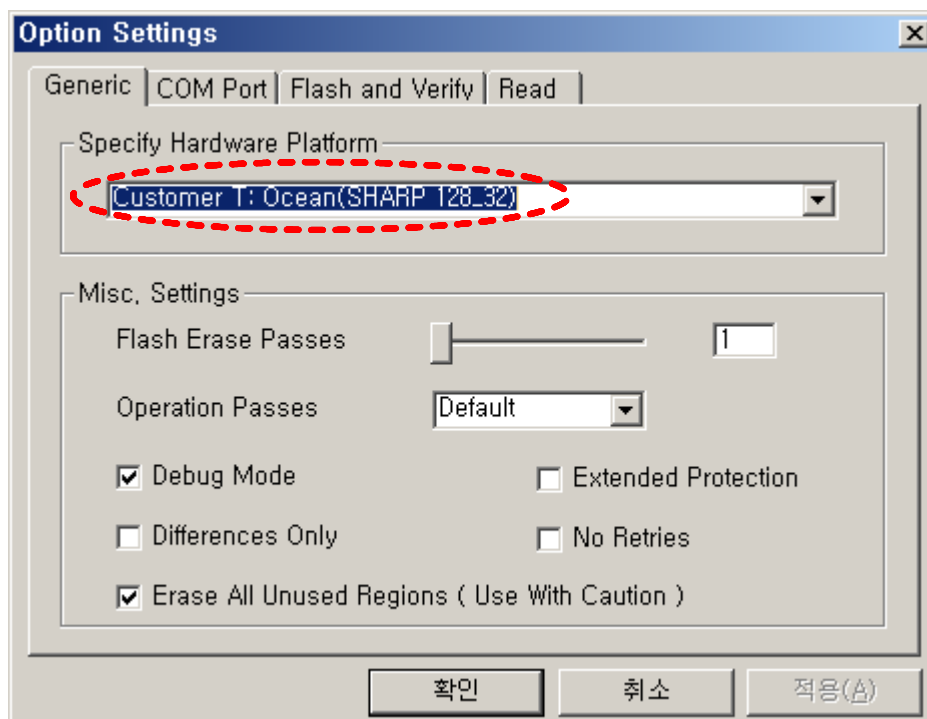
- Downloader Program([OptiFlash.exe](#))
- B200 Mobile Phone
- Data Cable
- Binary files

4-3. S/W Downloader Program

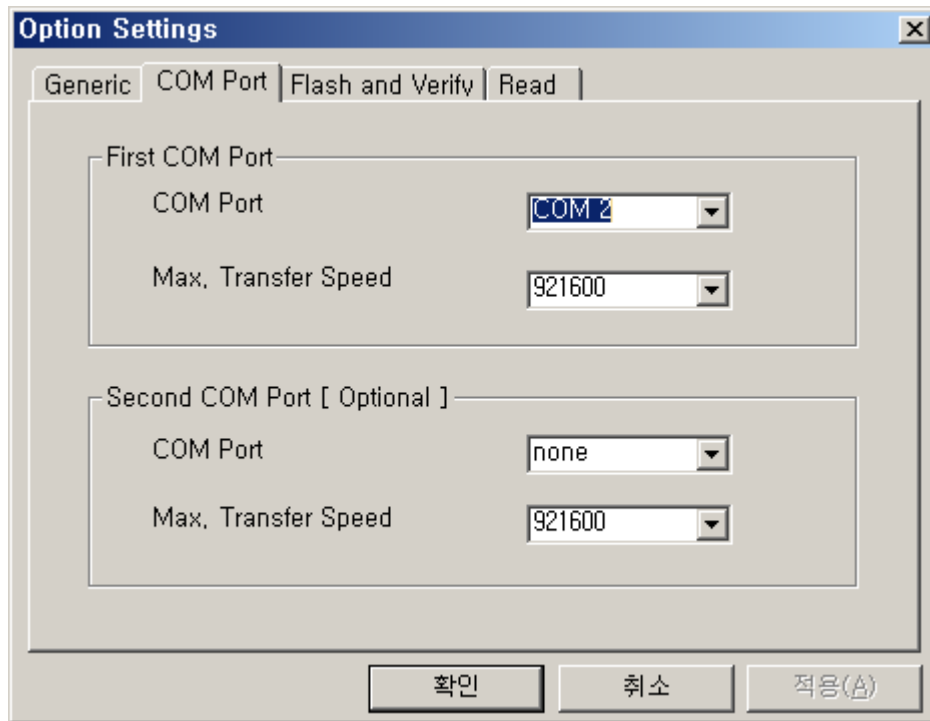
1. Load the binary download program by executing the “**OptiFlash.exe**”



2. Select the “**Options**” -> “**Settings**” -> “**Generic**” -> “**Specify hardware platform**”. Choose hardware platform for the downloader file setting. Set the everything else as the default values which are shown below



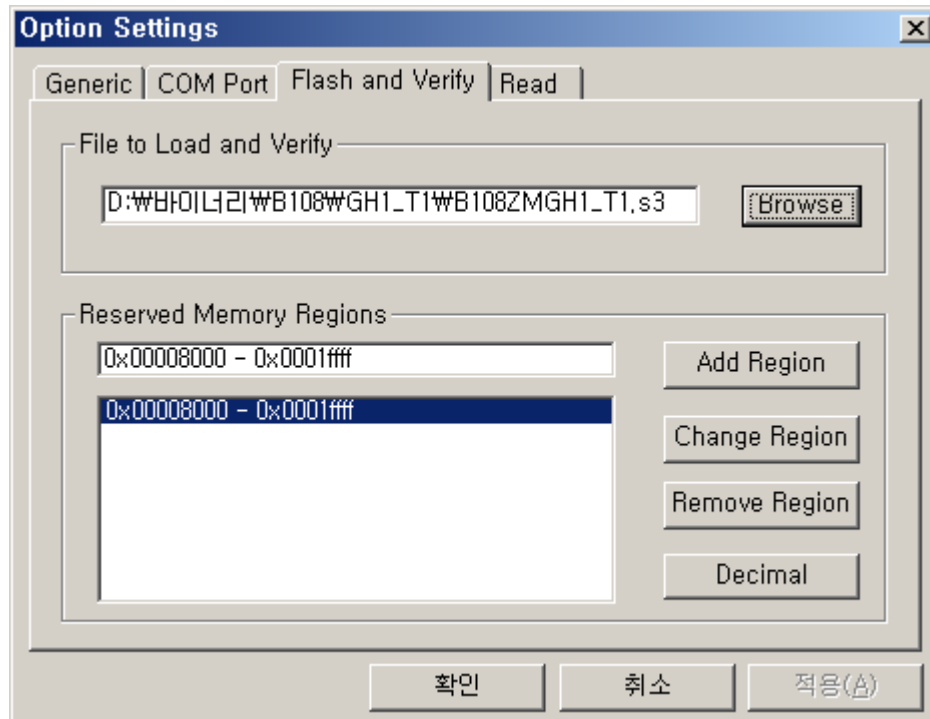
3. Select the **COM port** when the download cable is connected



Up to twelve ports are supported. Additionally you can select the maximum transfer speed OptiFlash will use to communicate with the phone. However, OptiFlash will use a slower speed if either the PC's or the phone's serial hardware is incapable of handling the selected speed

4. Select the “Flash&Verify” -> “Browse”

Set the directory path and choose the latest s/w binary, for example B200XXYY.s3”, for the downloader binary setting.



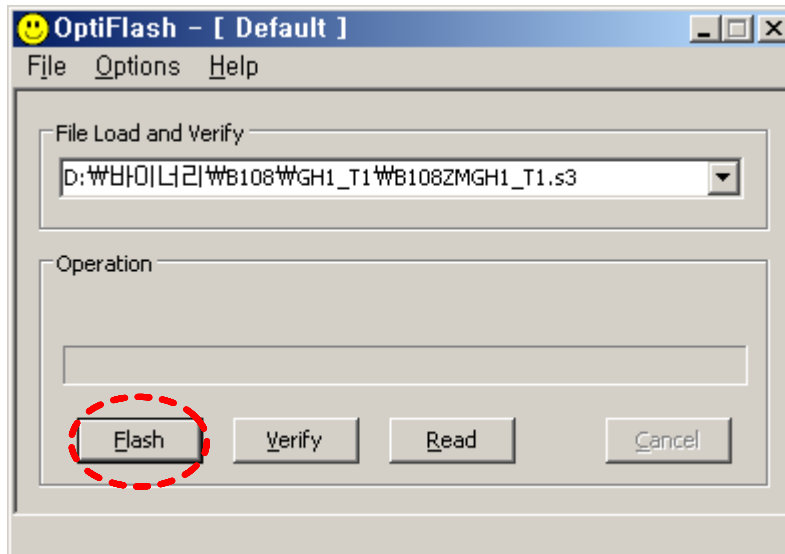
Make sure that not to change the reserved memory regions.

**In case of B200 the reserved memory regions are :
-0x00008000 – 0x0001ffff**

5. Click “**OK**” button then press “**Flash**”.

(Before pressing ‘Flash’ button, push the button “*” and ‘END’ at the same time. Then press ‘Flash’.)

Downloader will upload the binary file as below for the downloading.



6. When downloading is finished successfully, there is a “All is well” message.

7. After finishing downloading, Certain memory resets should be done to guarantee the normal performance.

8. Confirm the downloaded version name and etc. :

***#1111#**

Full Reset :

***2767*3855#**