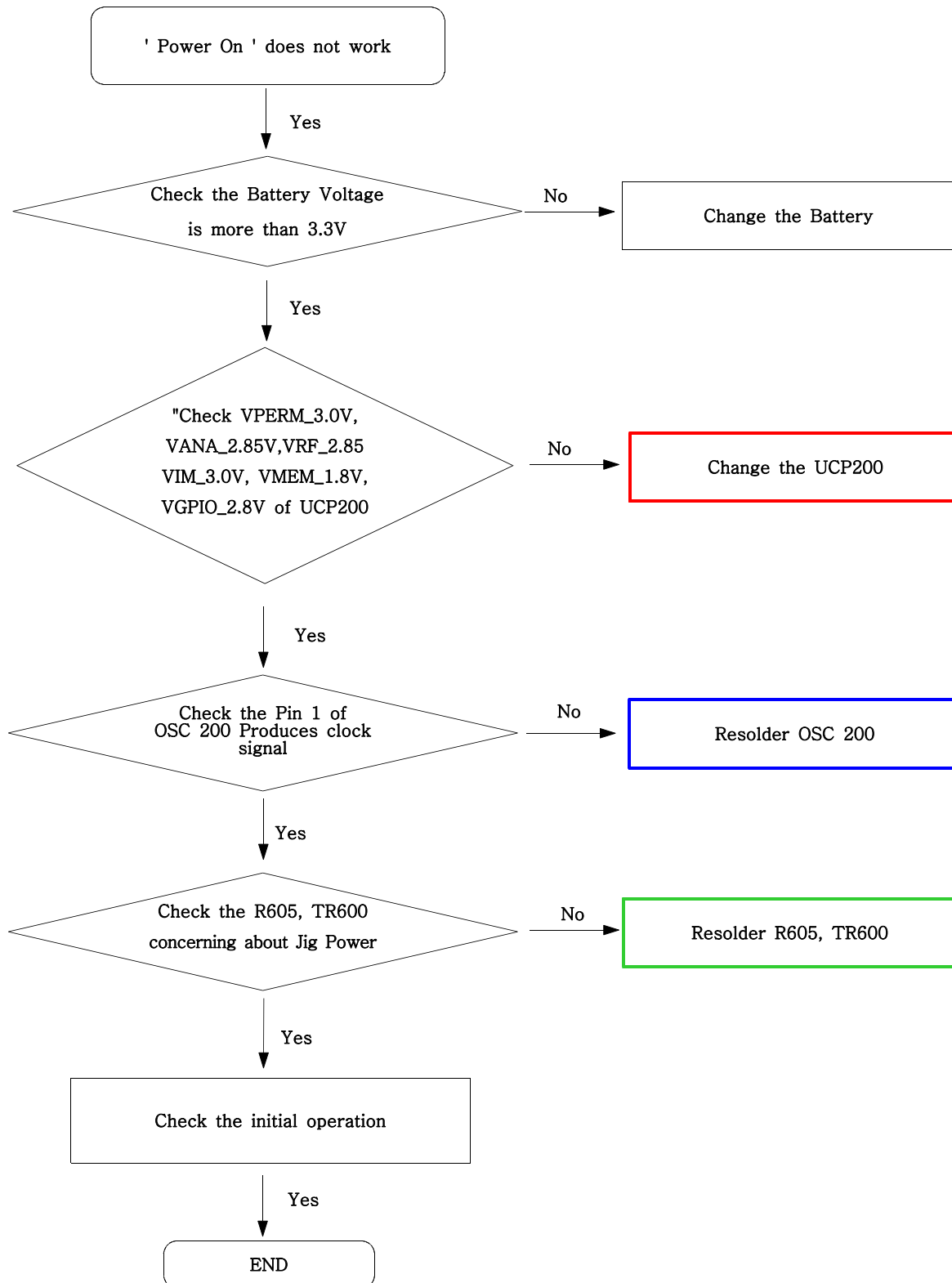
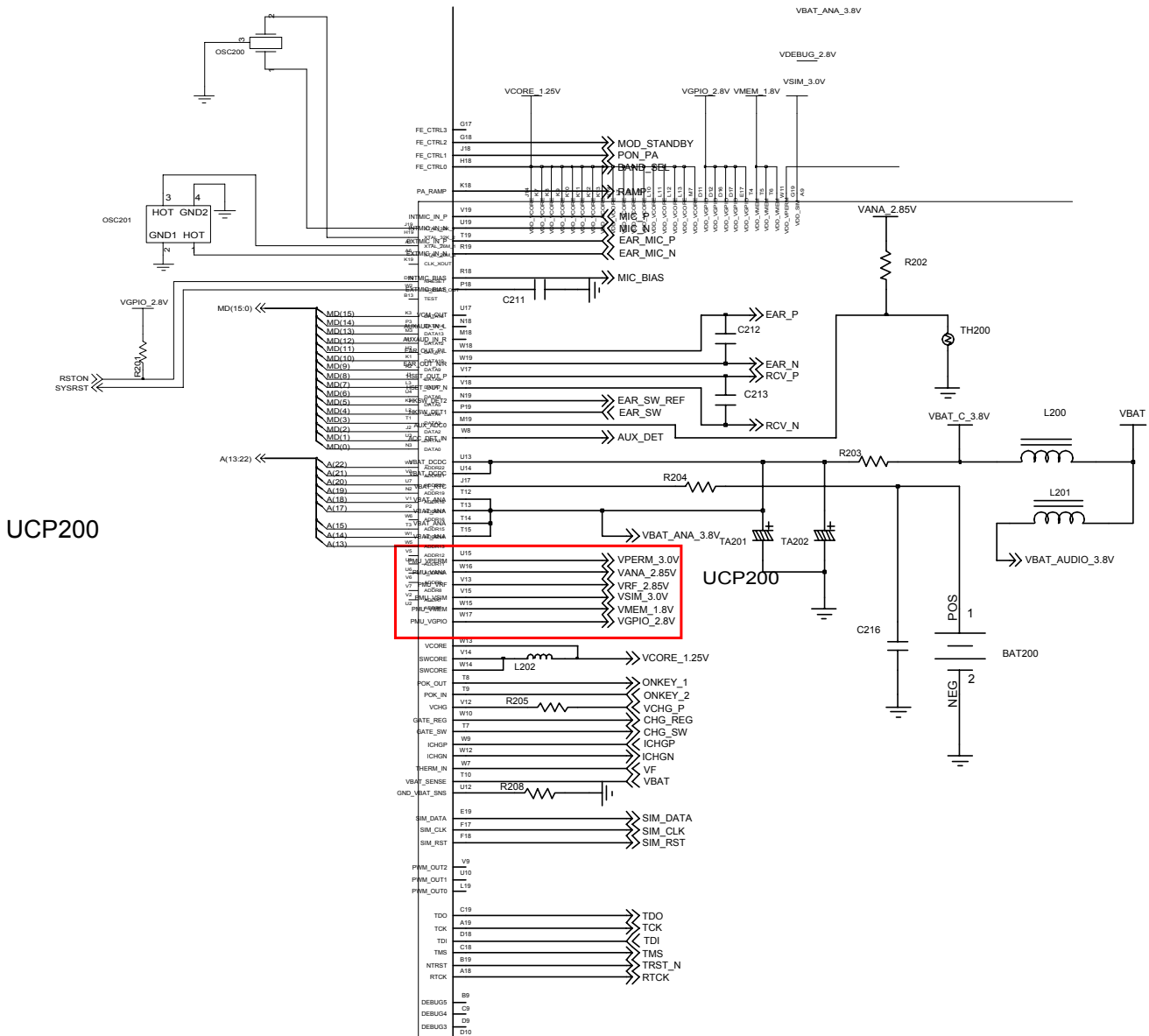


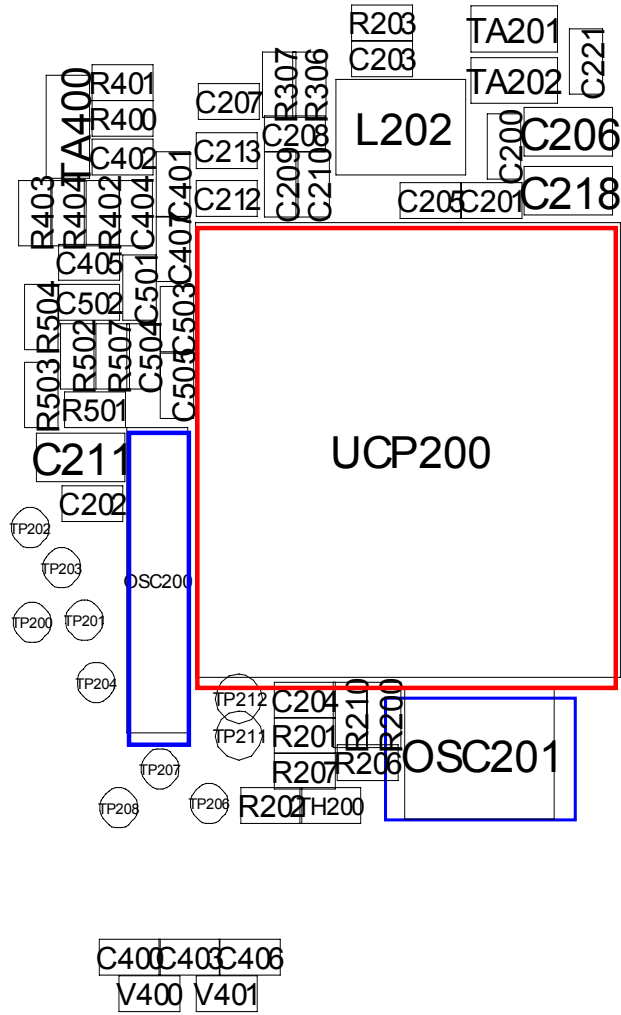
9. Flow Chart of Troubleshooting

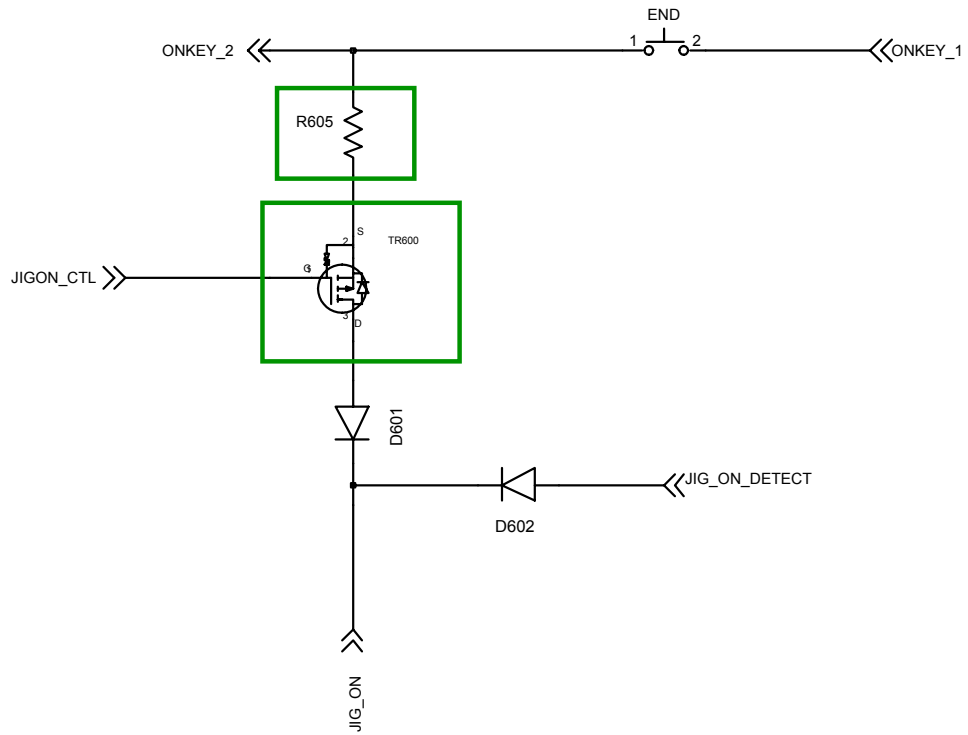
9-1. Power On

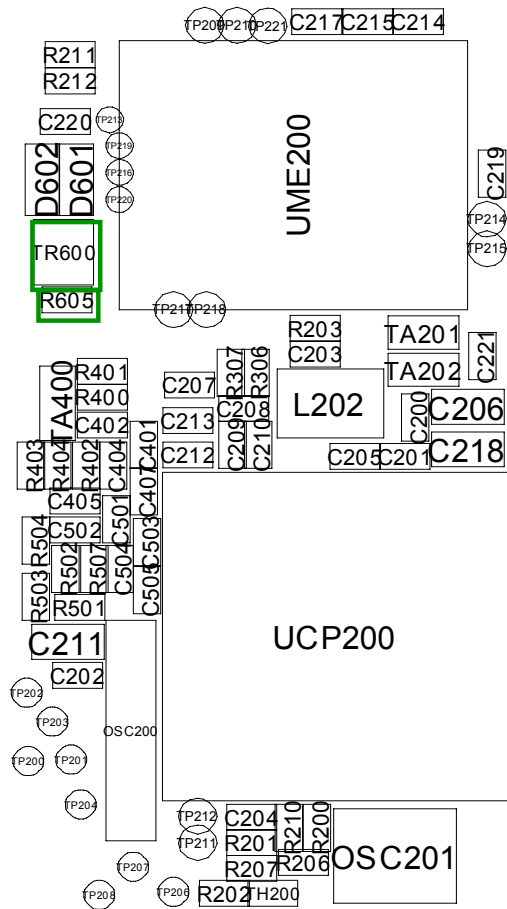


Flow Chart of Troubleshooting

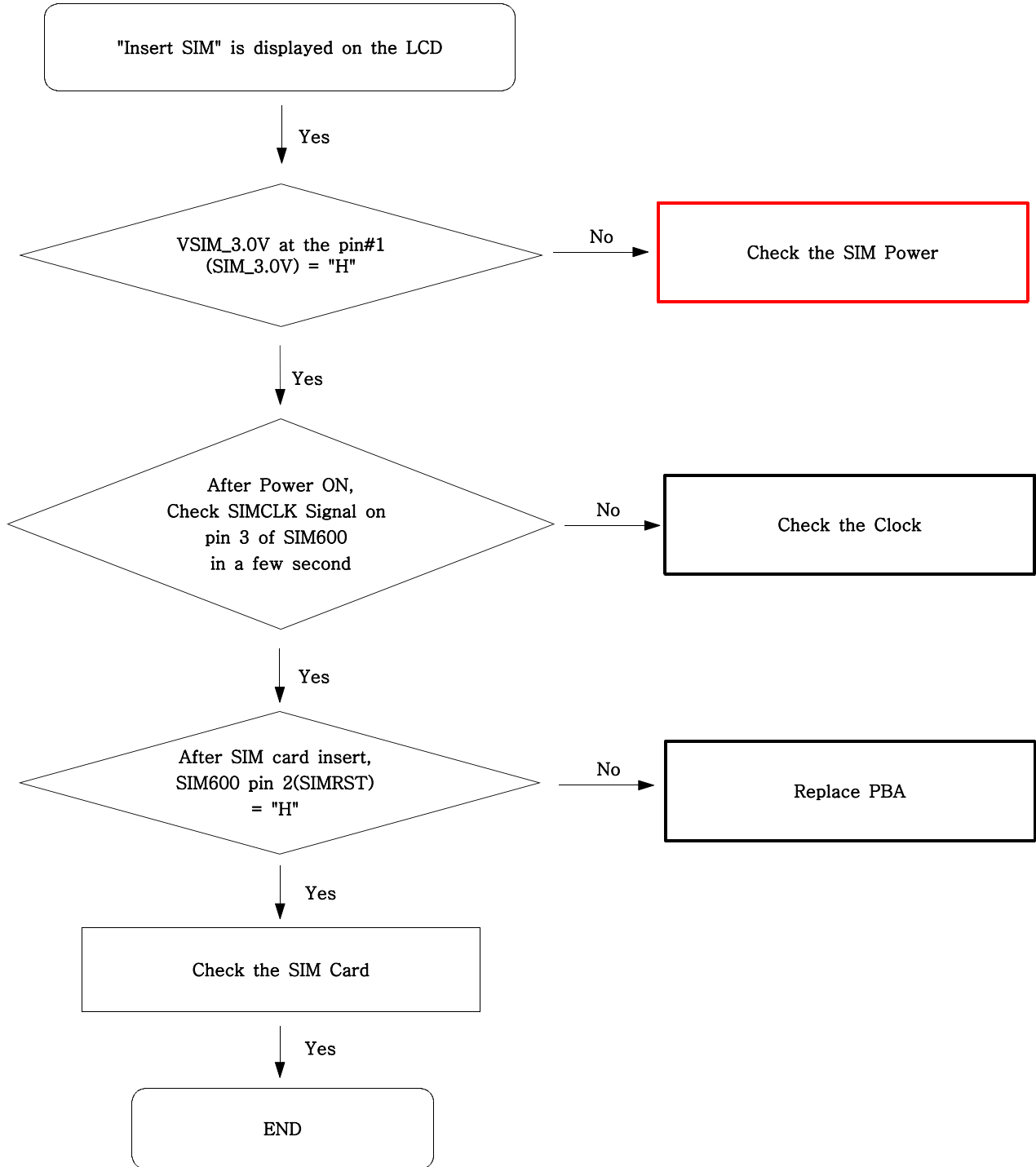


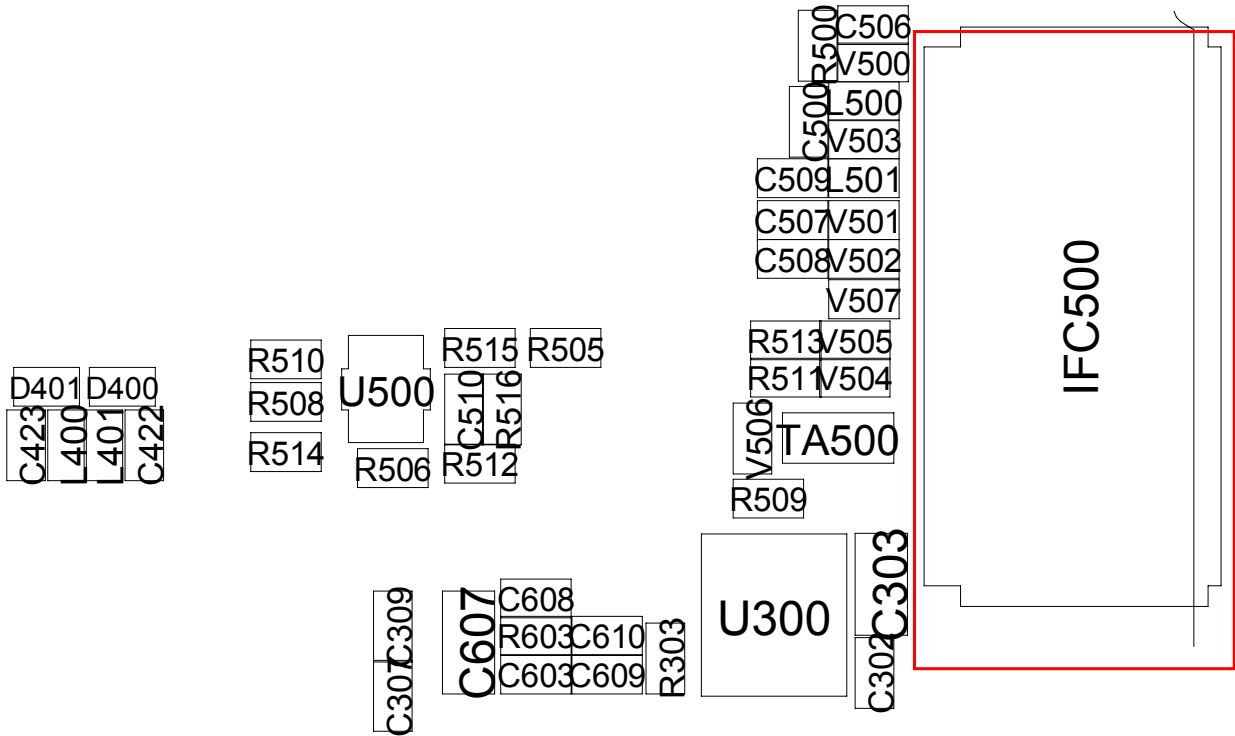
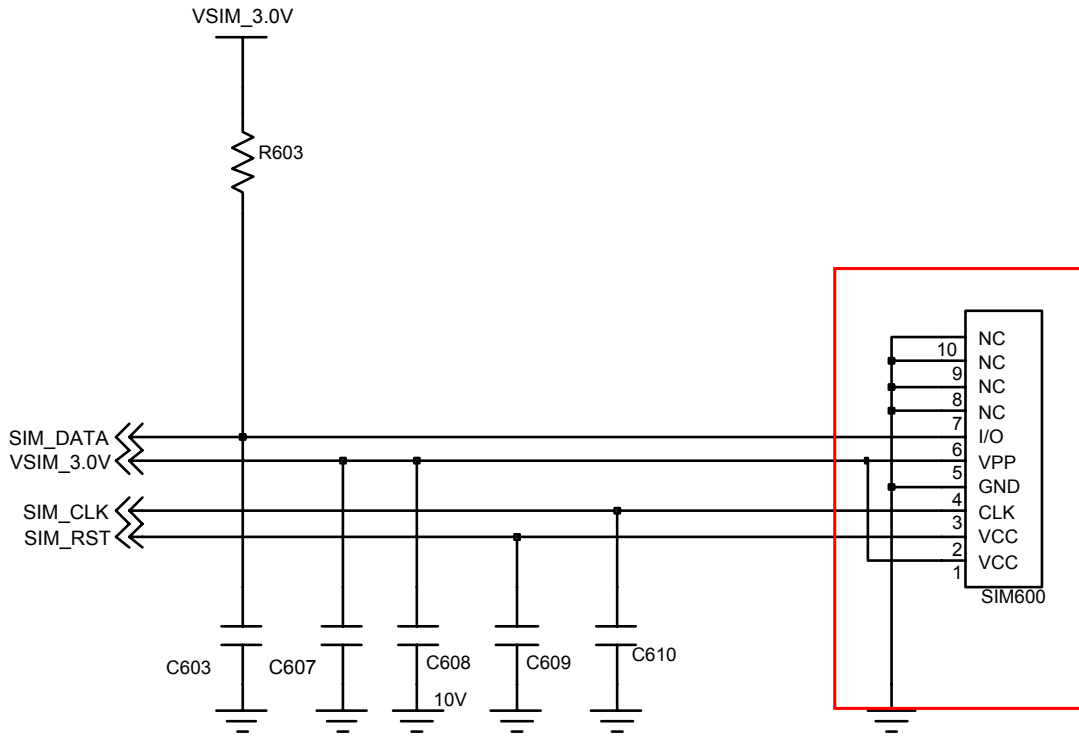




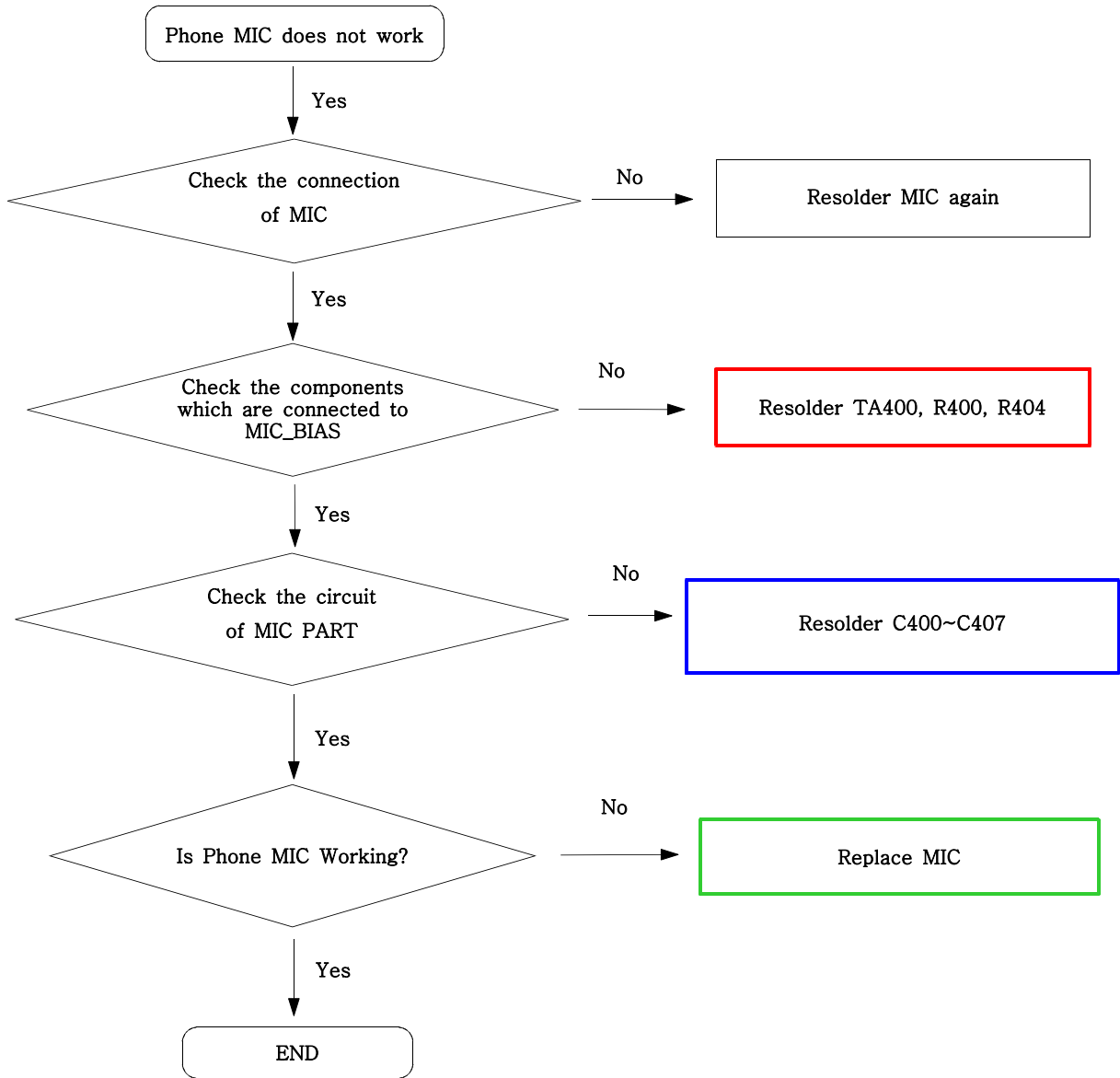


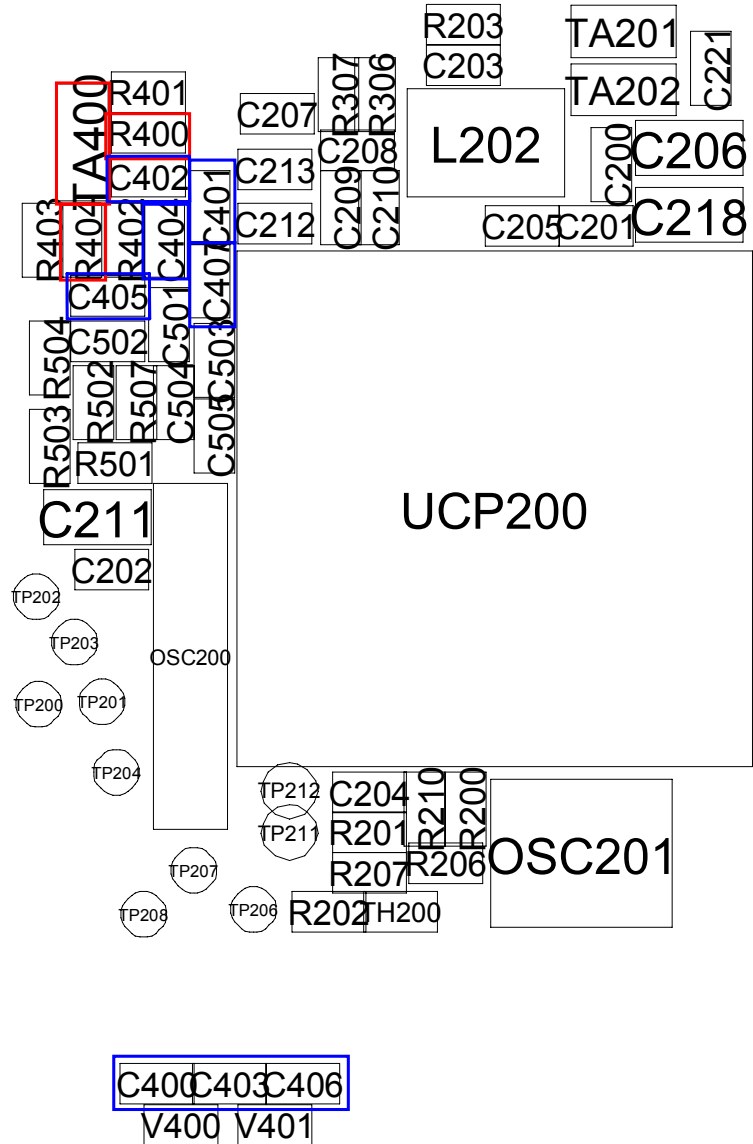
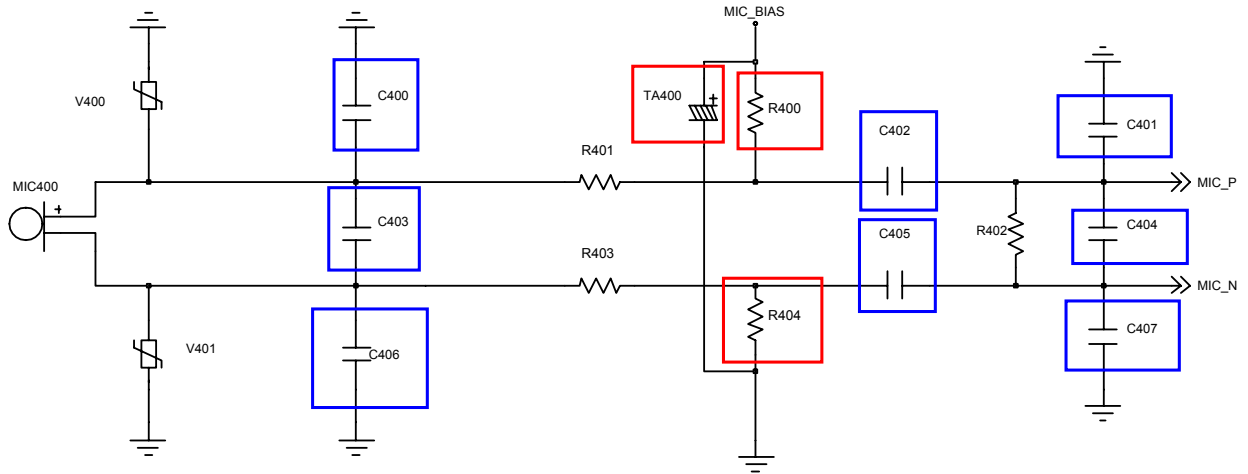
9-2. Sim Part



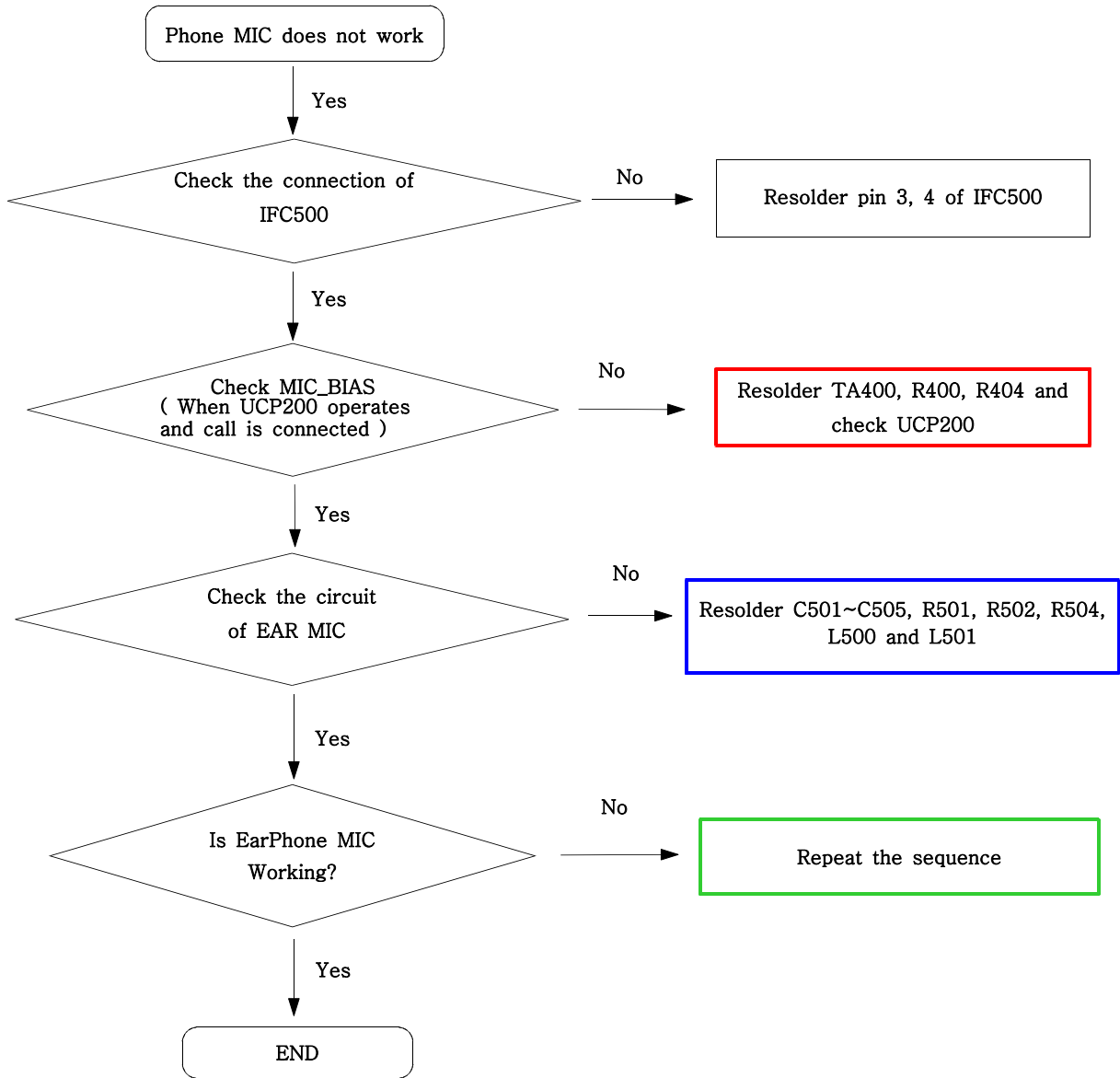


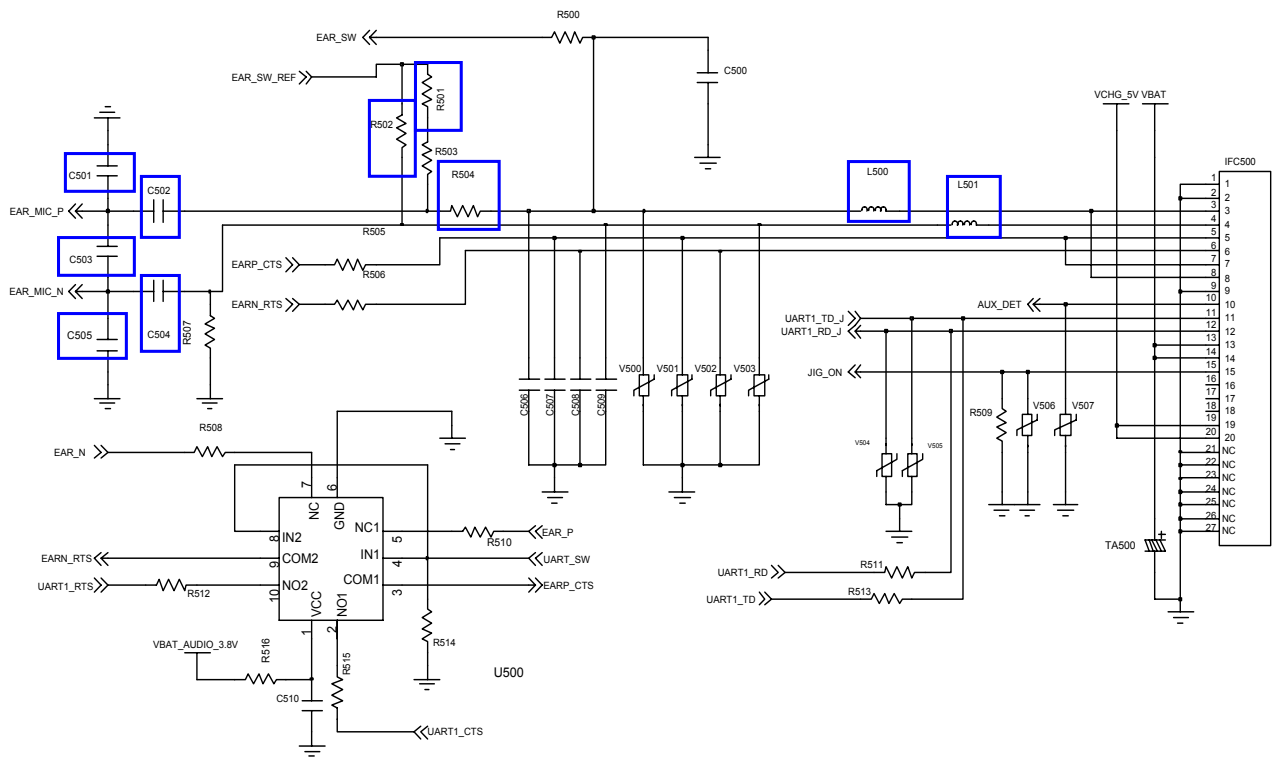
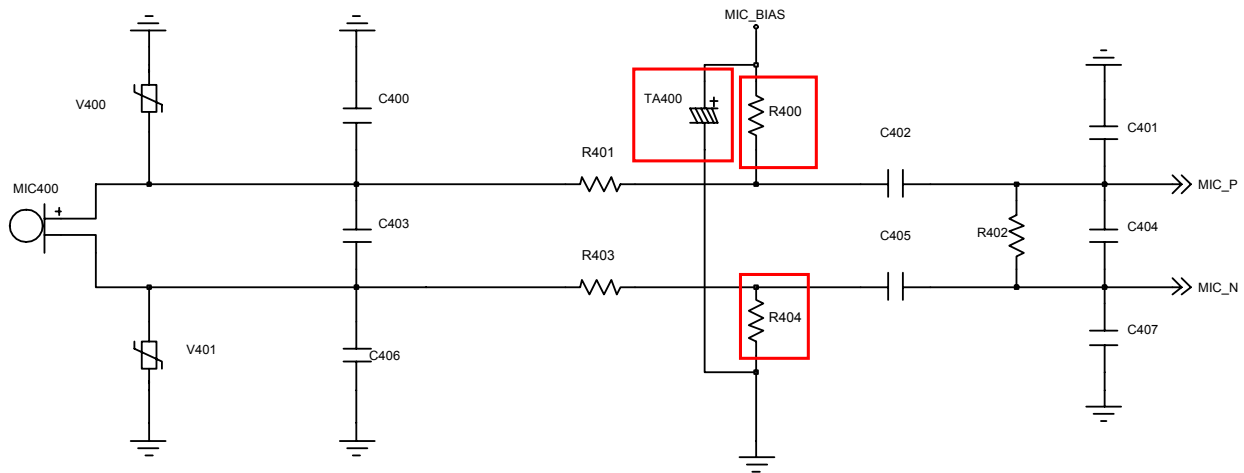
9-3. Microphone Part - Phone MIC

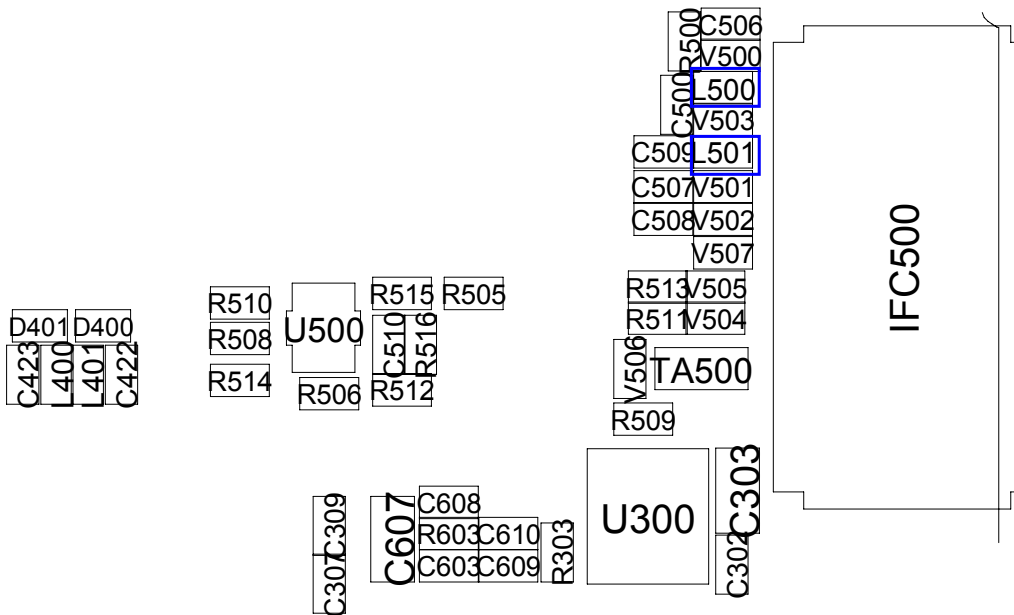
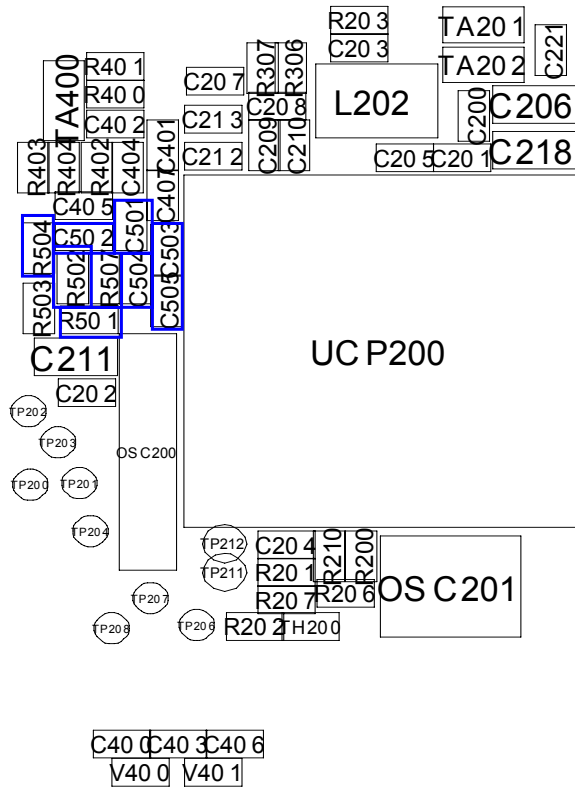




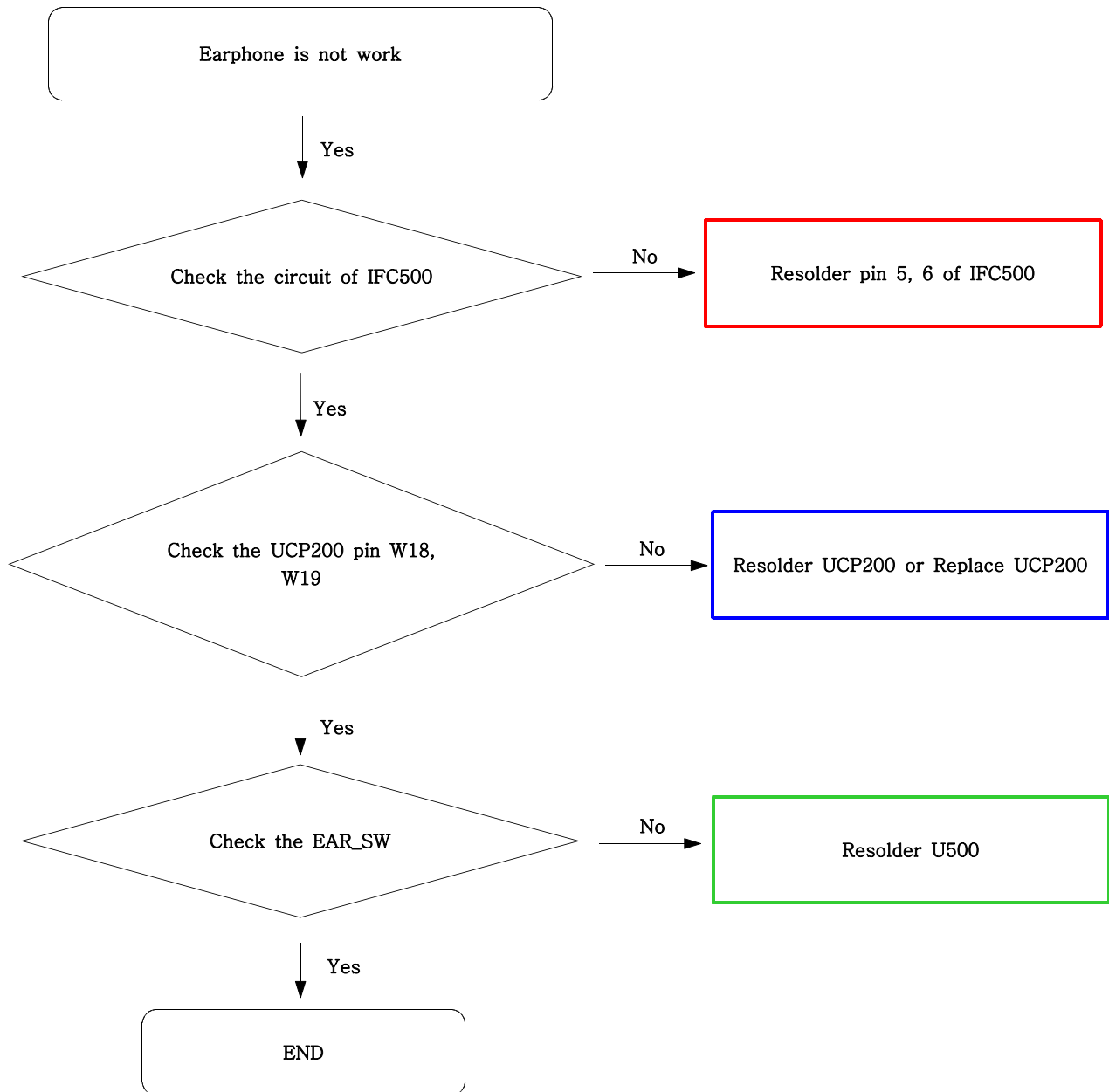
9-4. Microphone Part - Earphone MIC

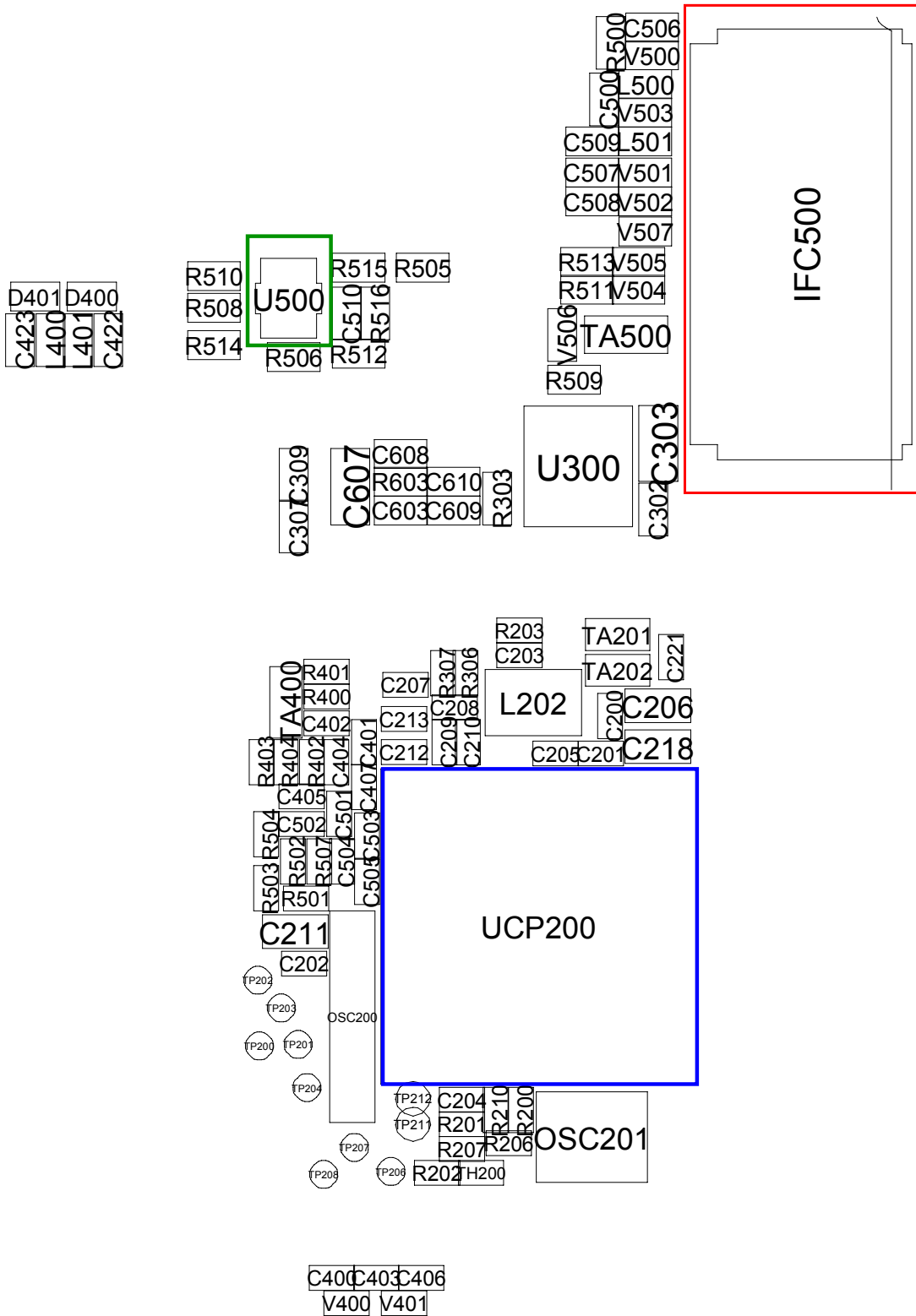




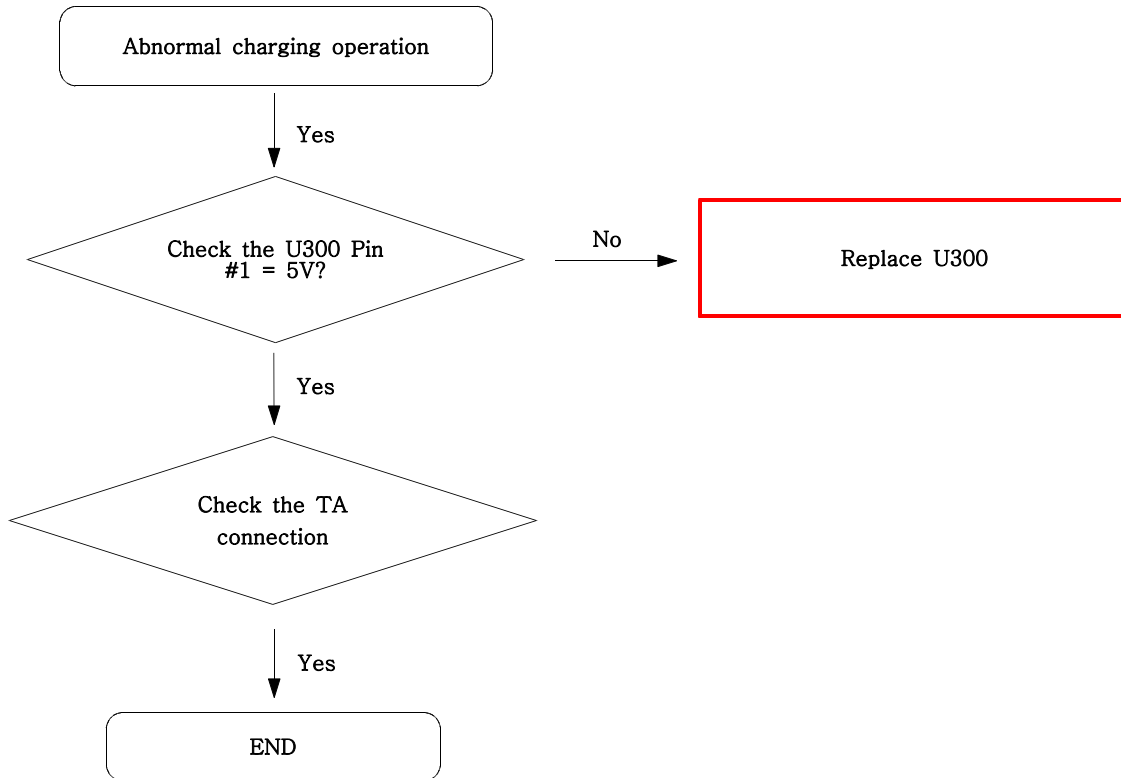


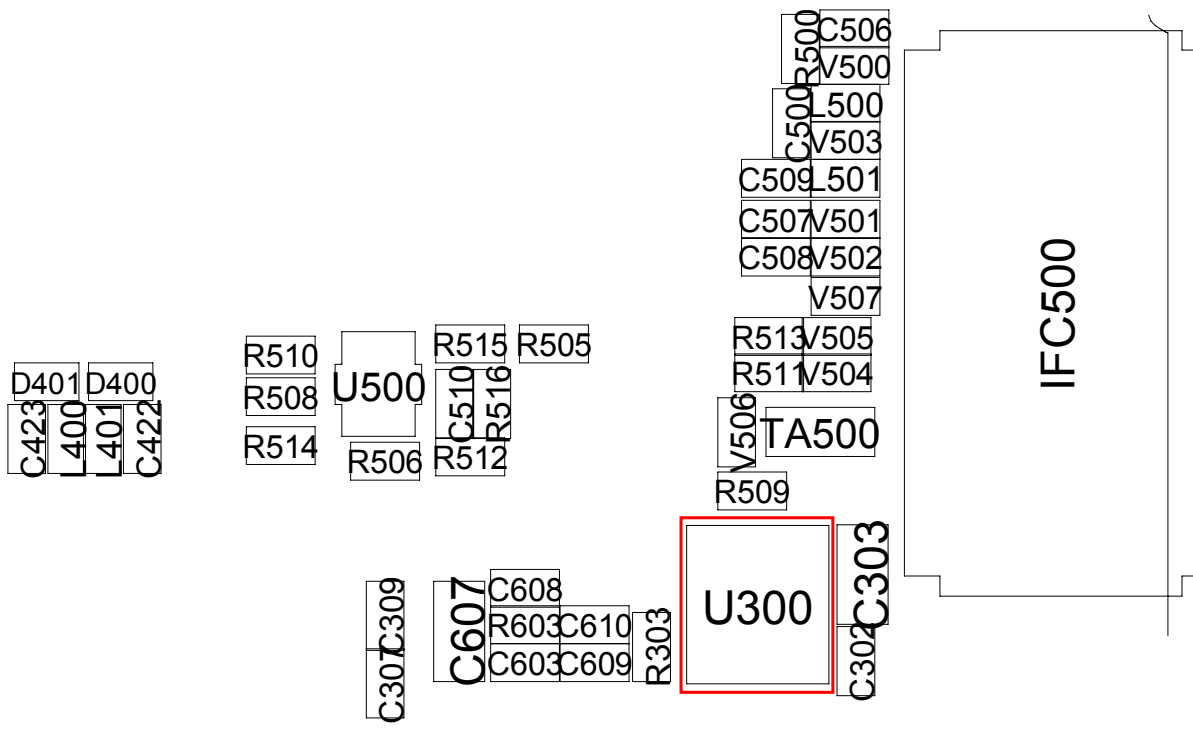
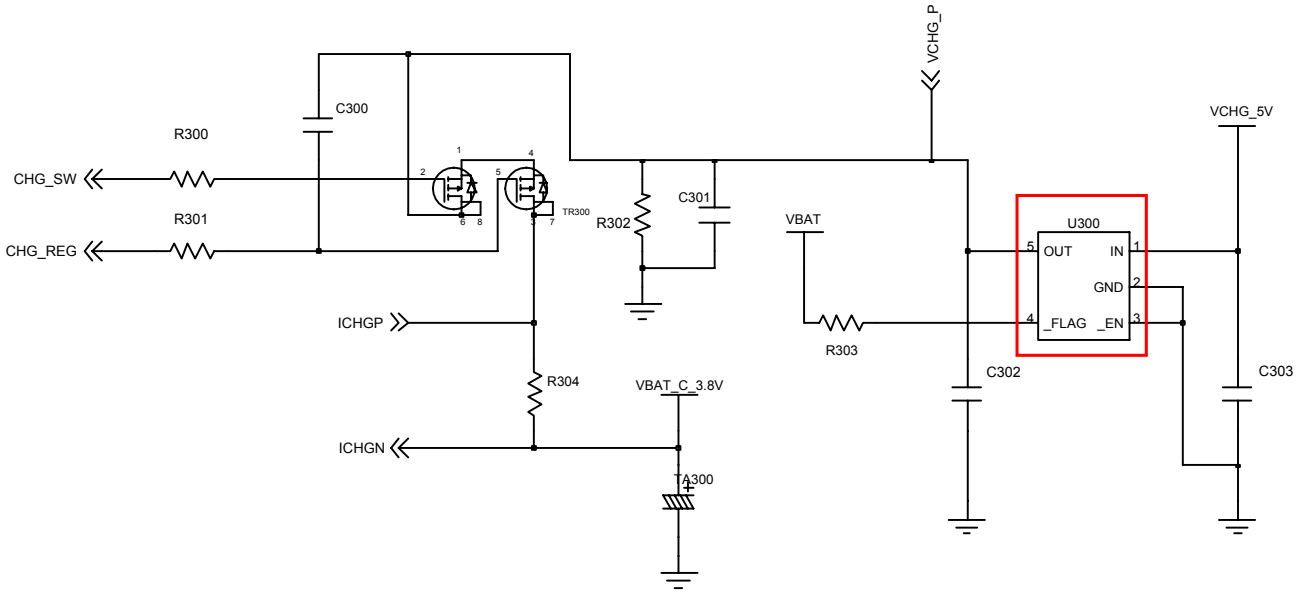
9-5. Earphone Part



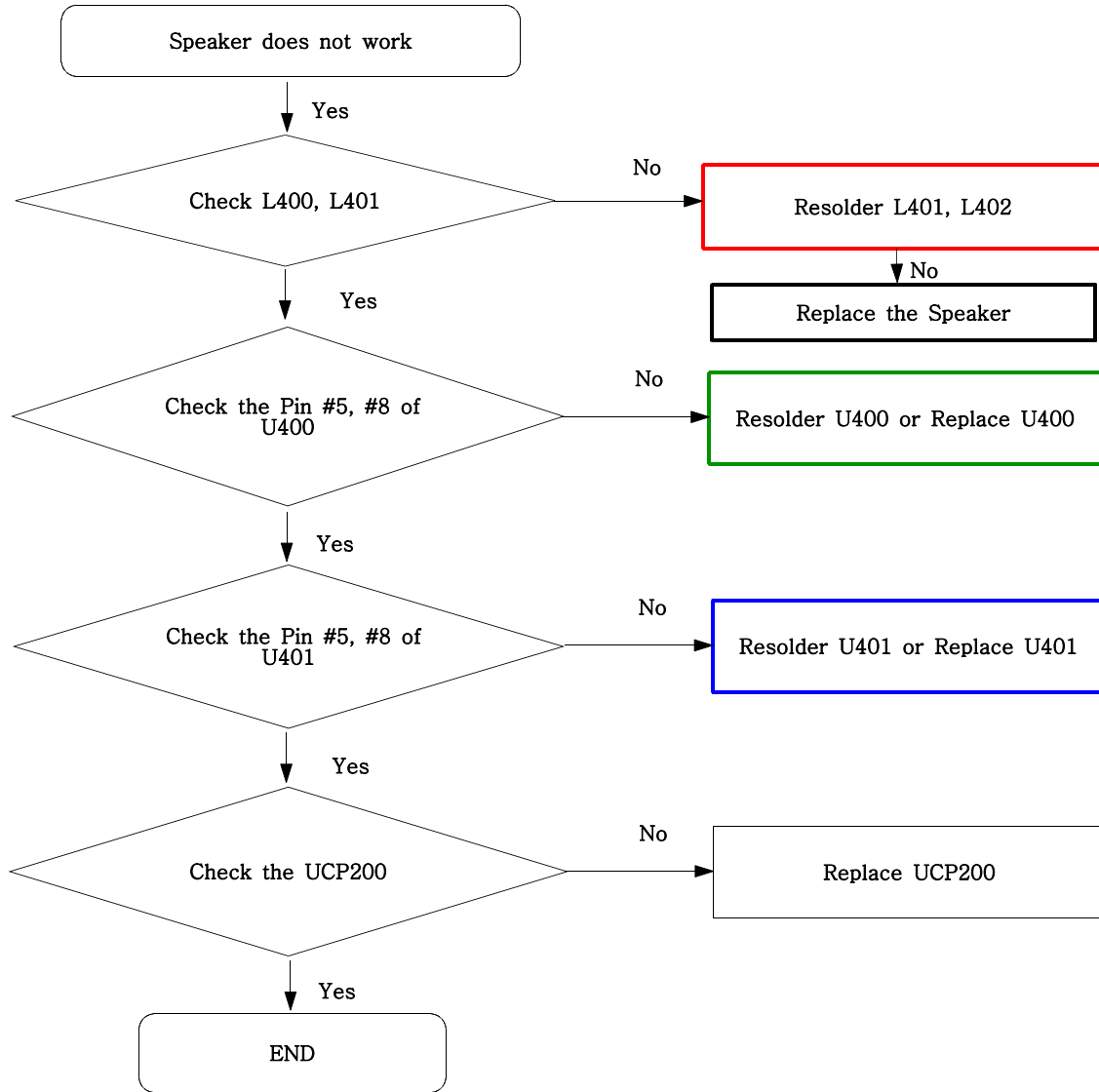


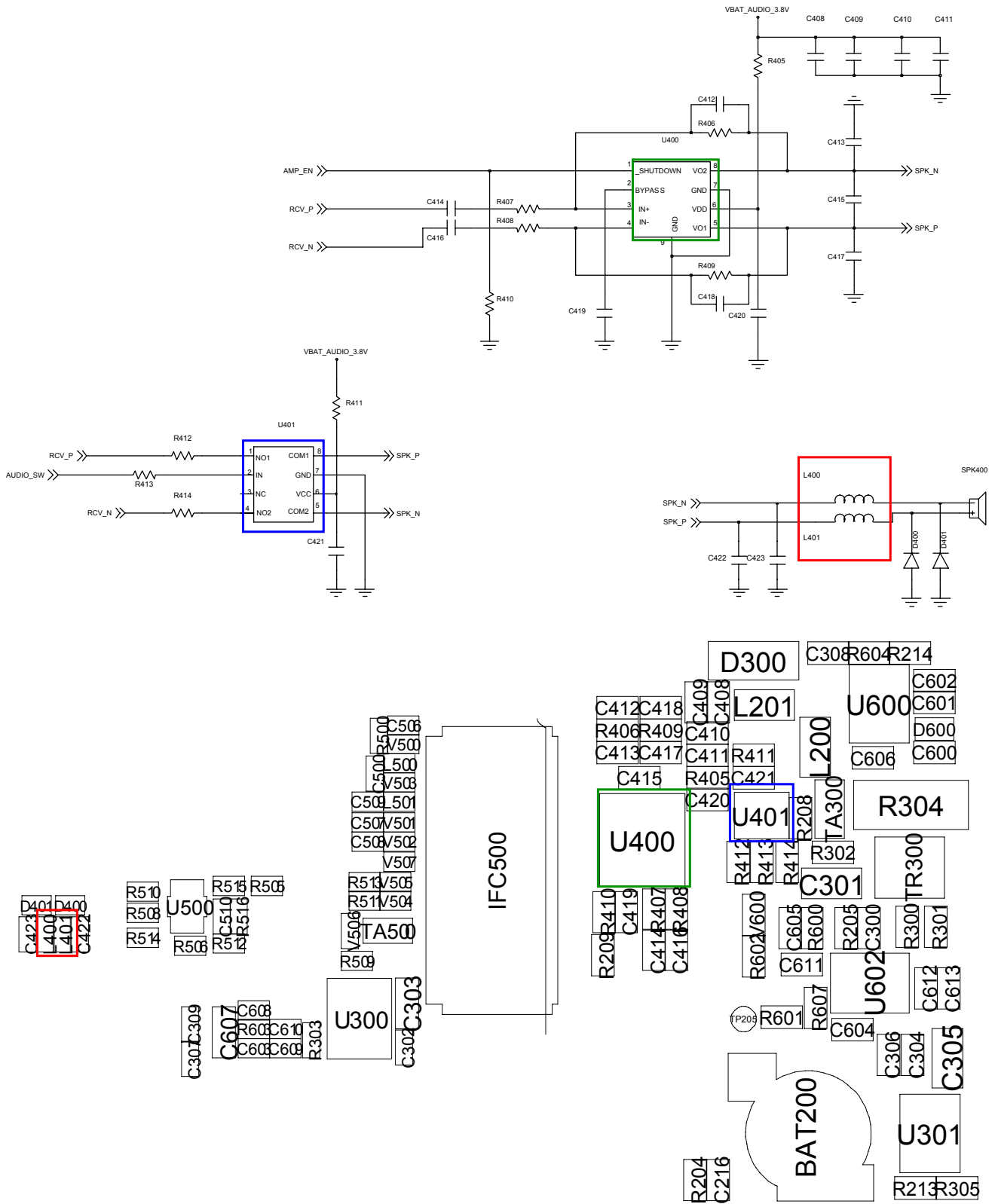
9-6. Charging Part



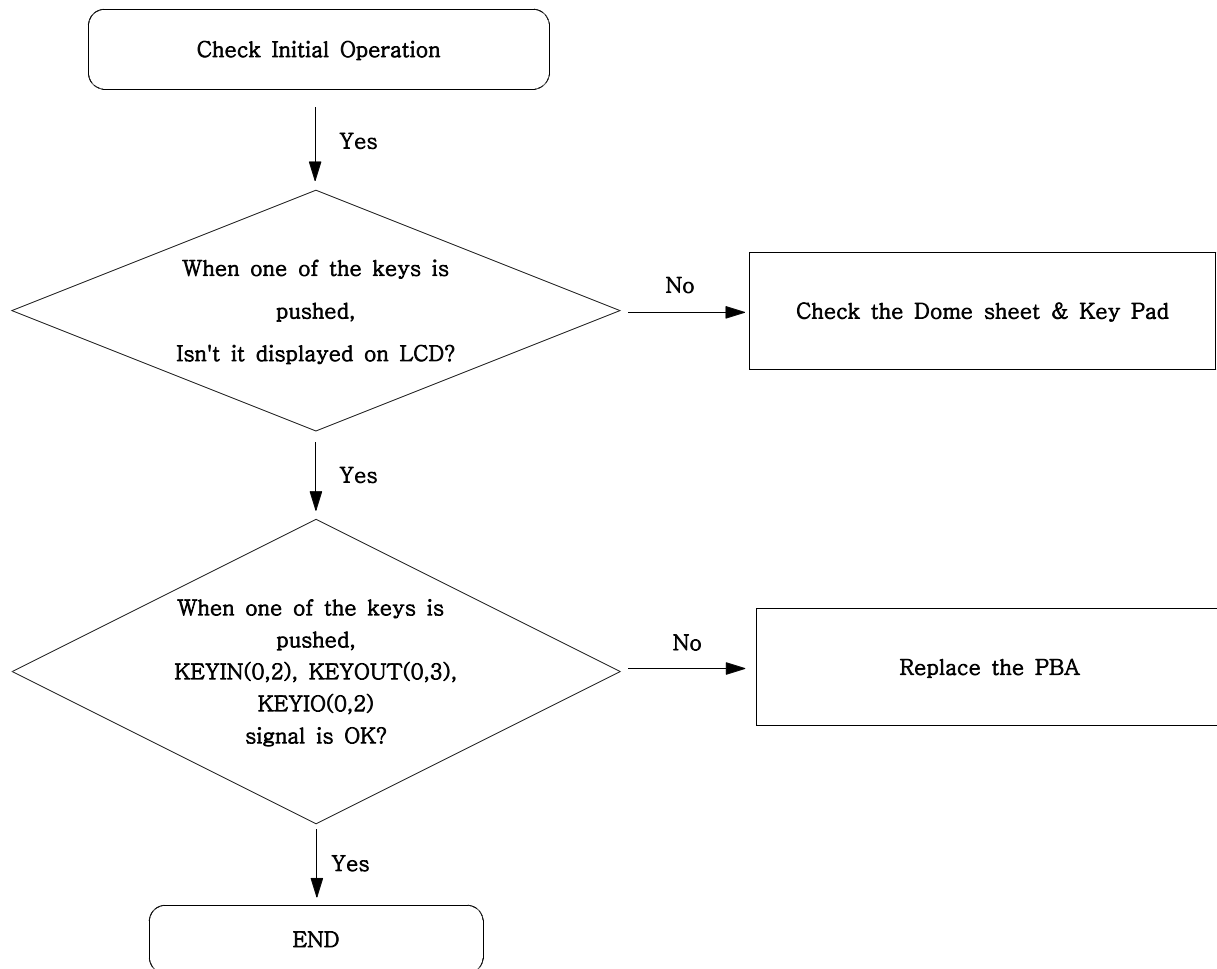


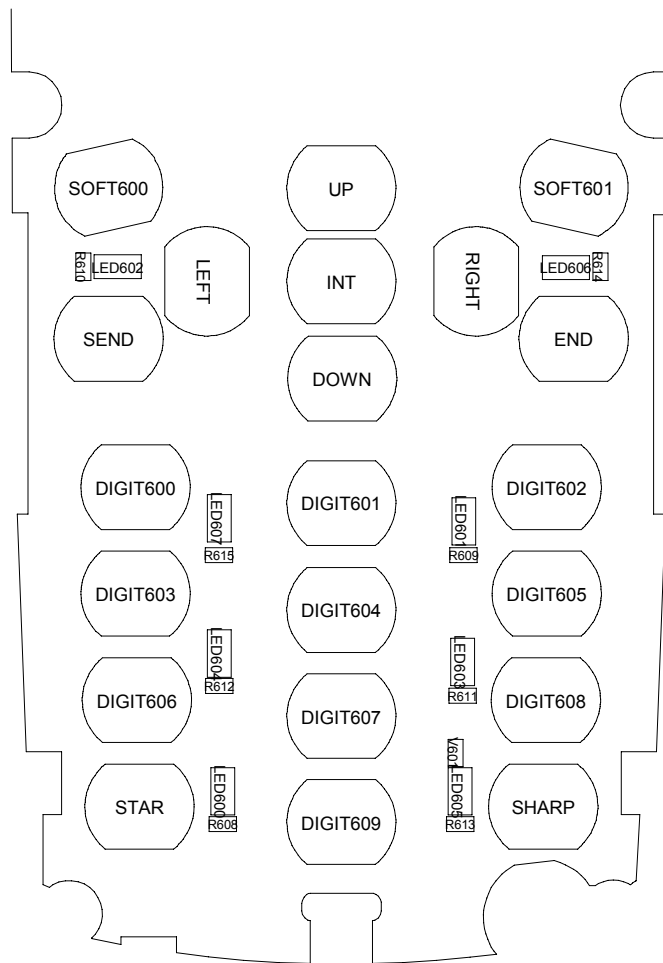
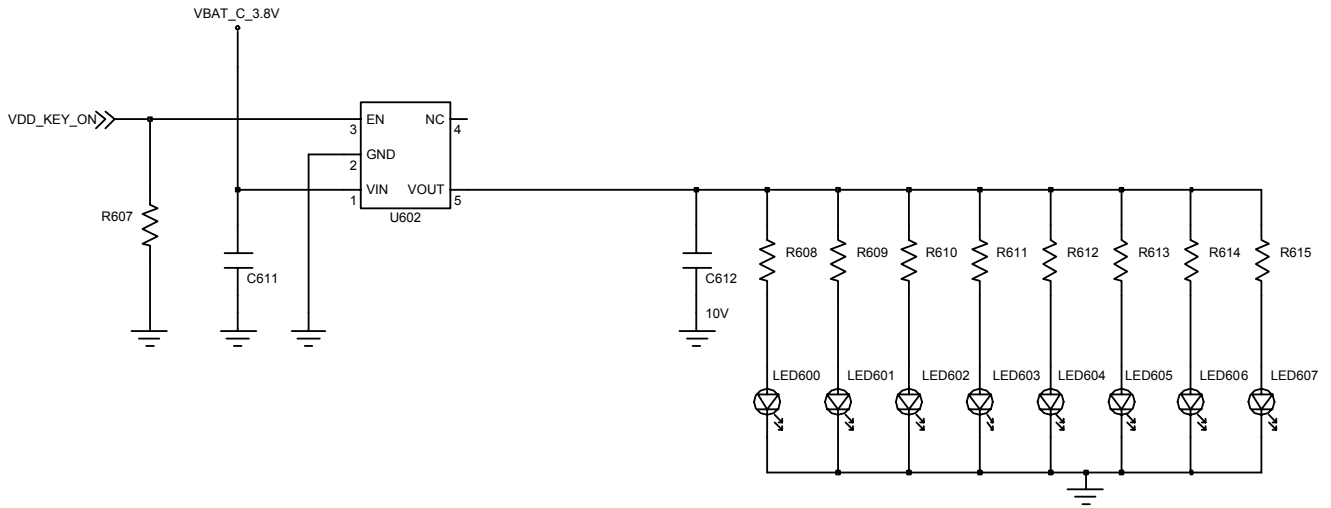
9-7. Speaker Part



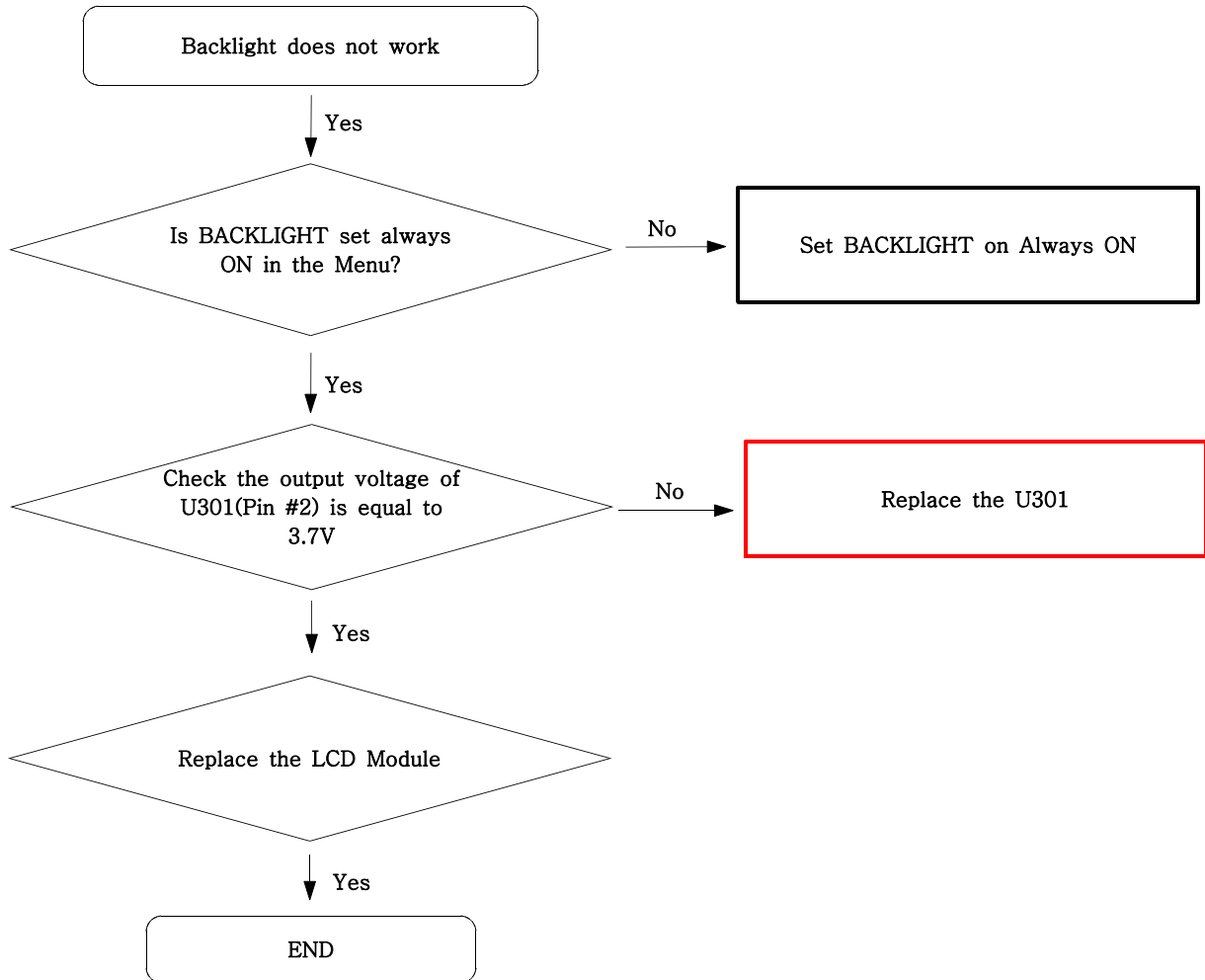


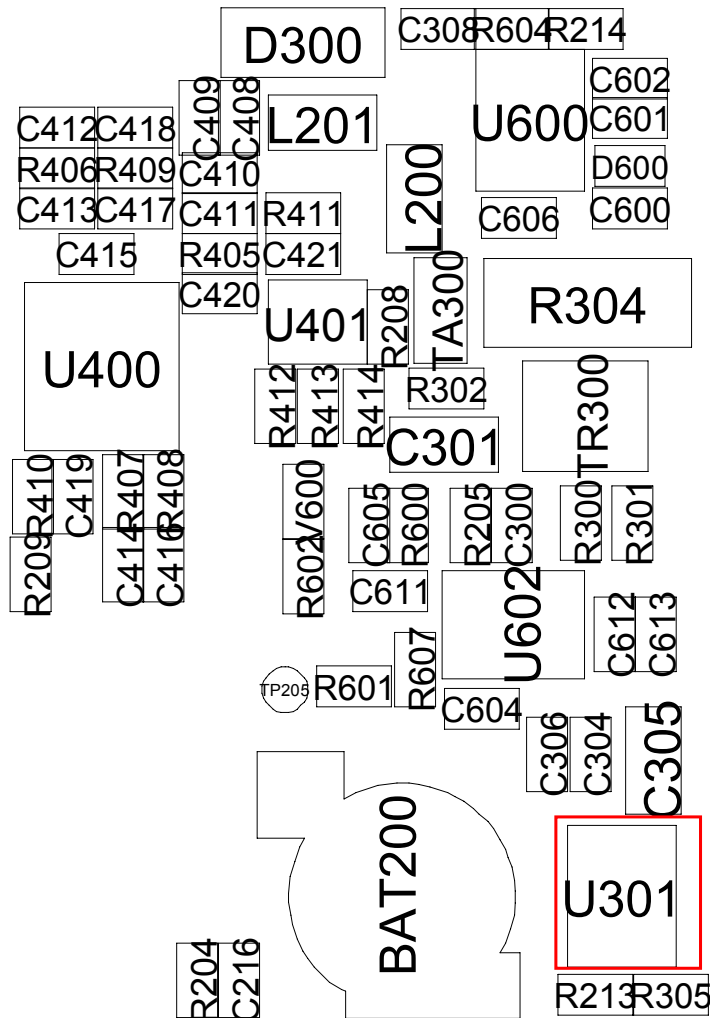
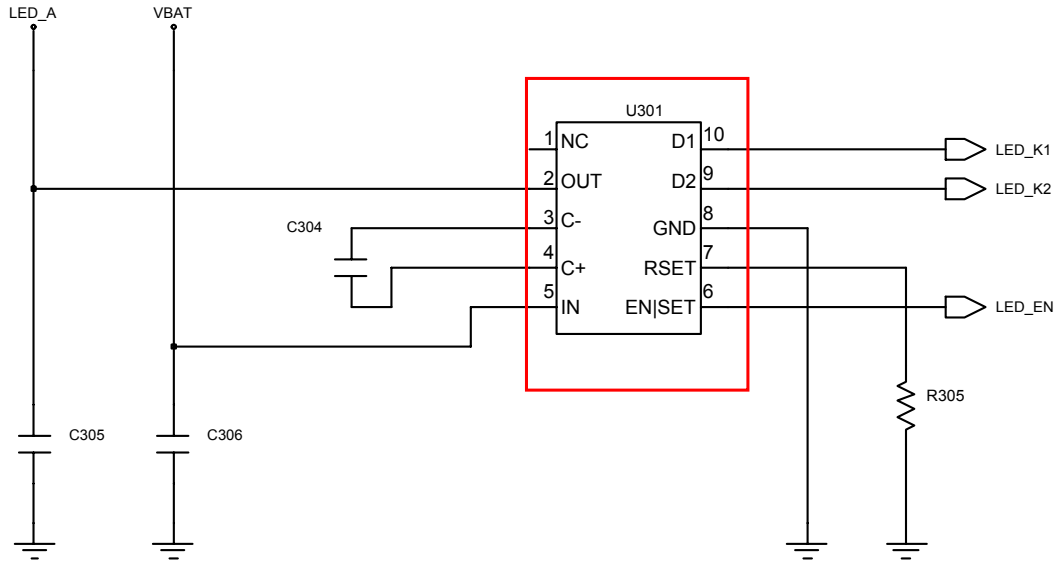
9-8. Key Data Input



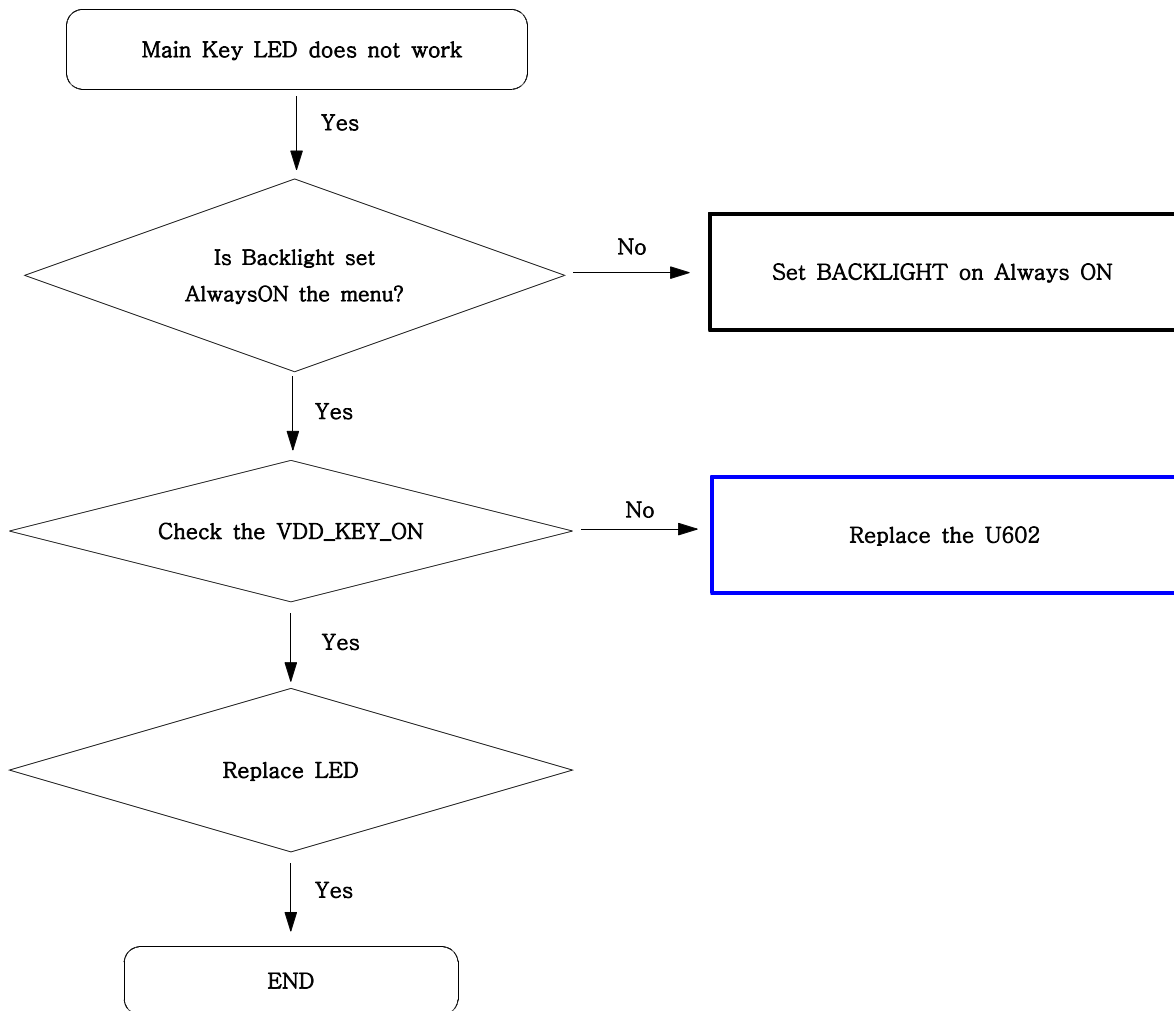


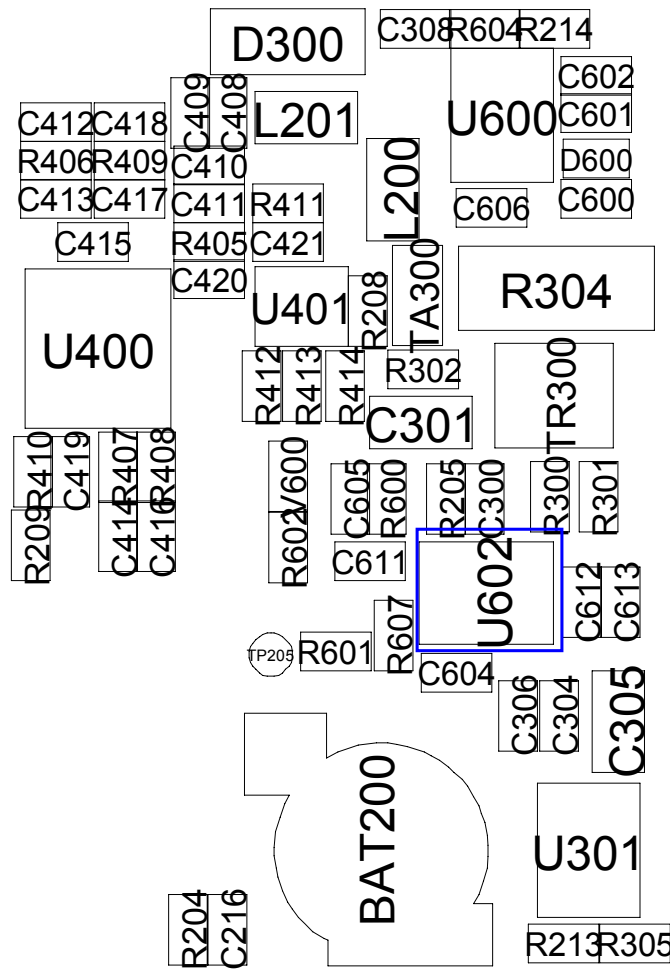
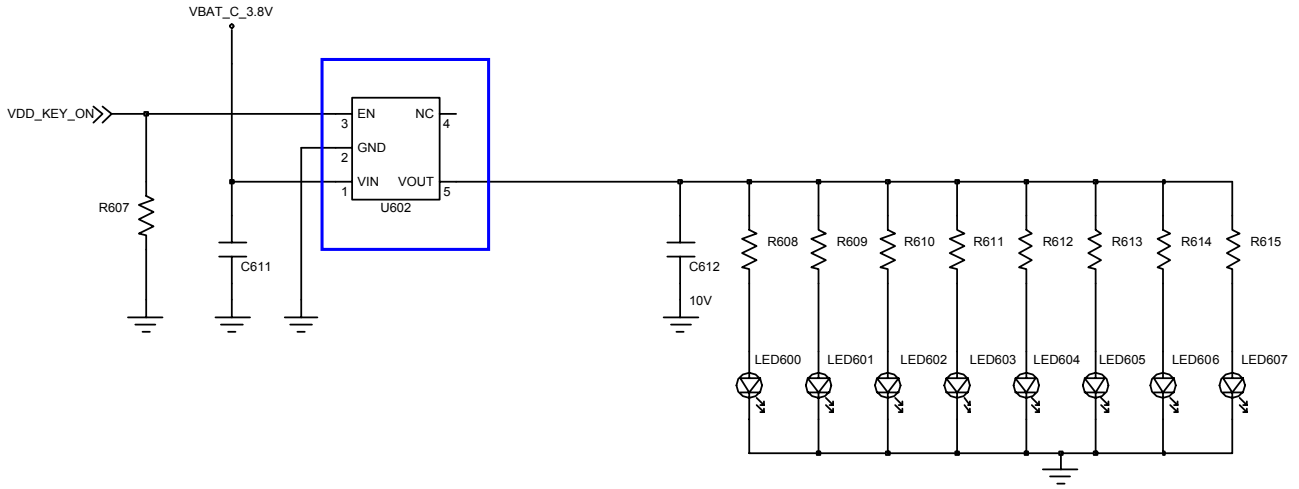
9-9. Back Light Part(For Color Main LCD)



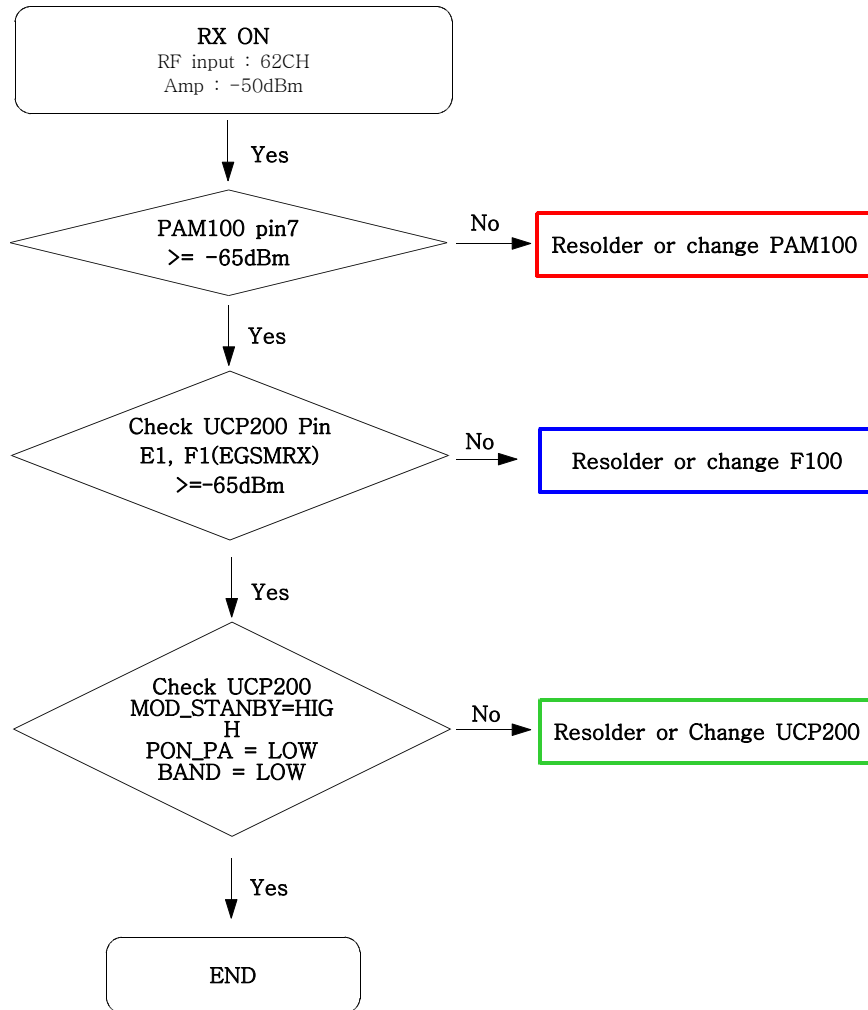


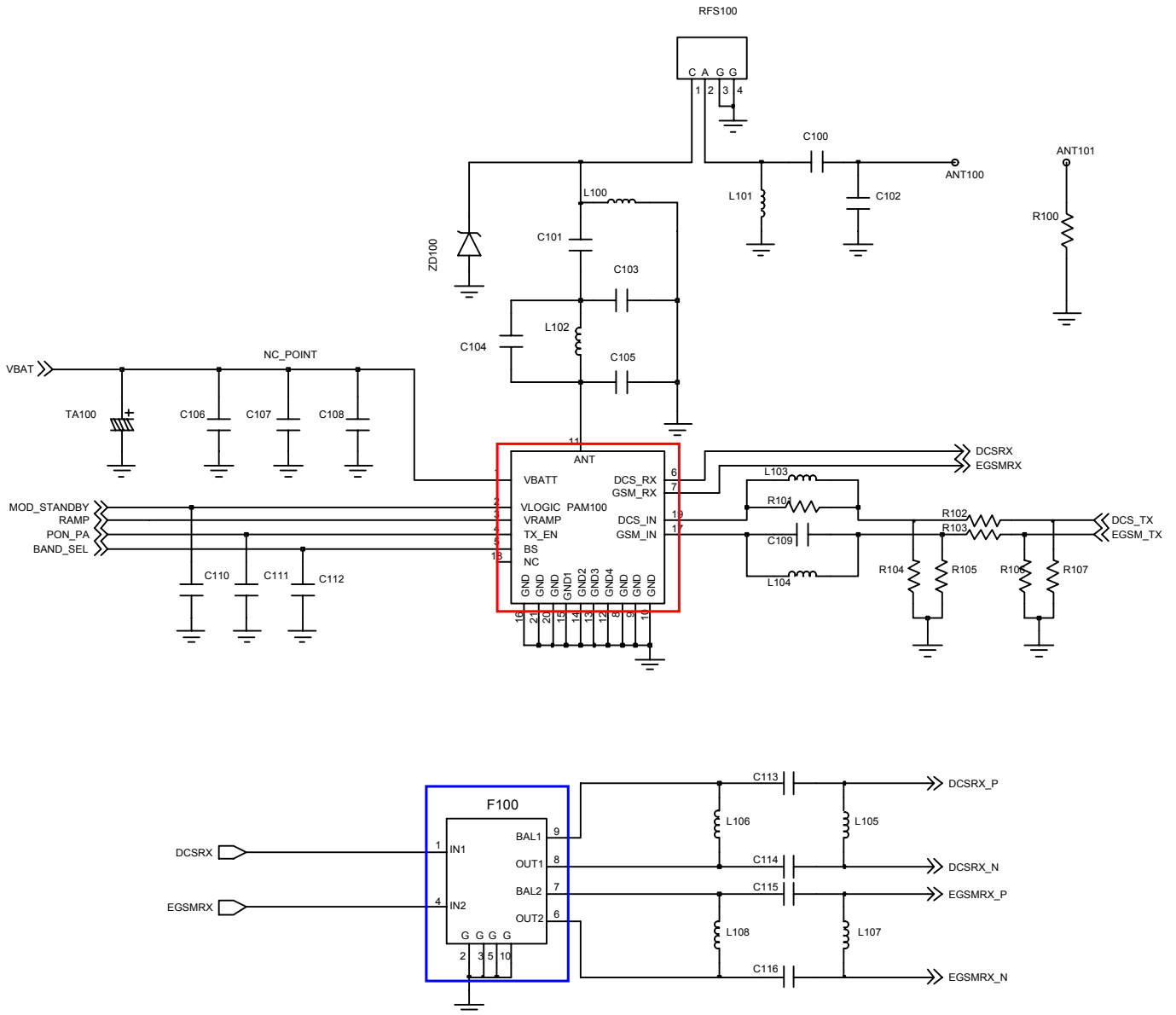
9-10. Key Back Light

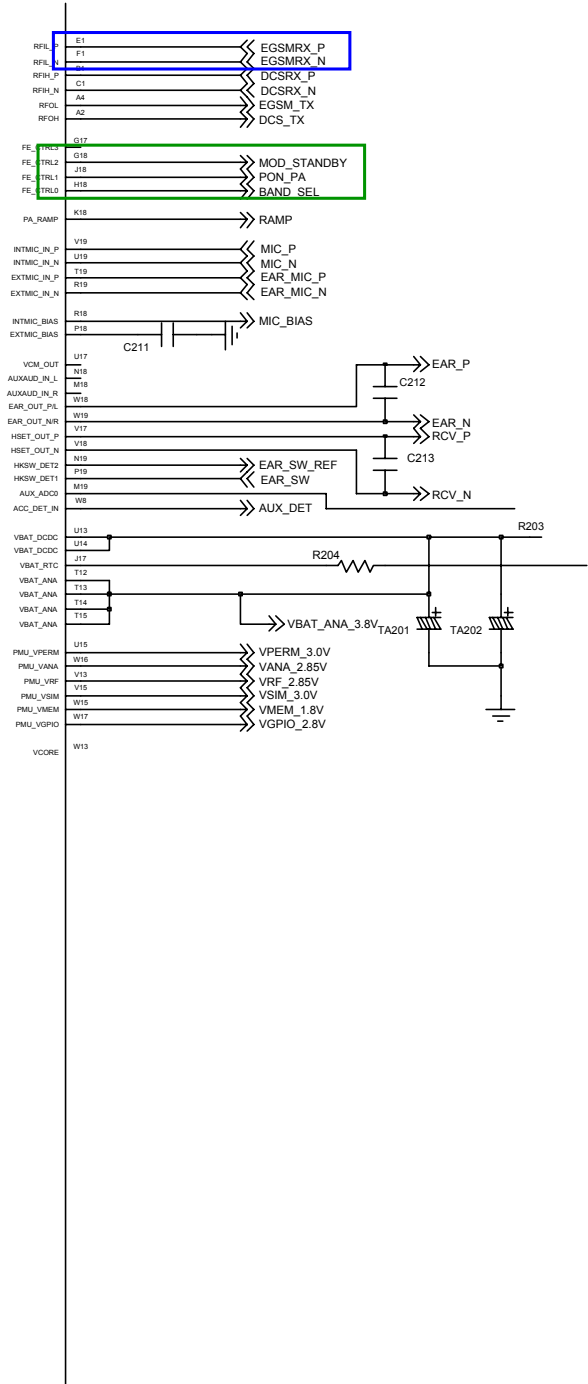


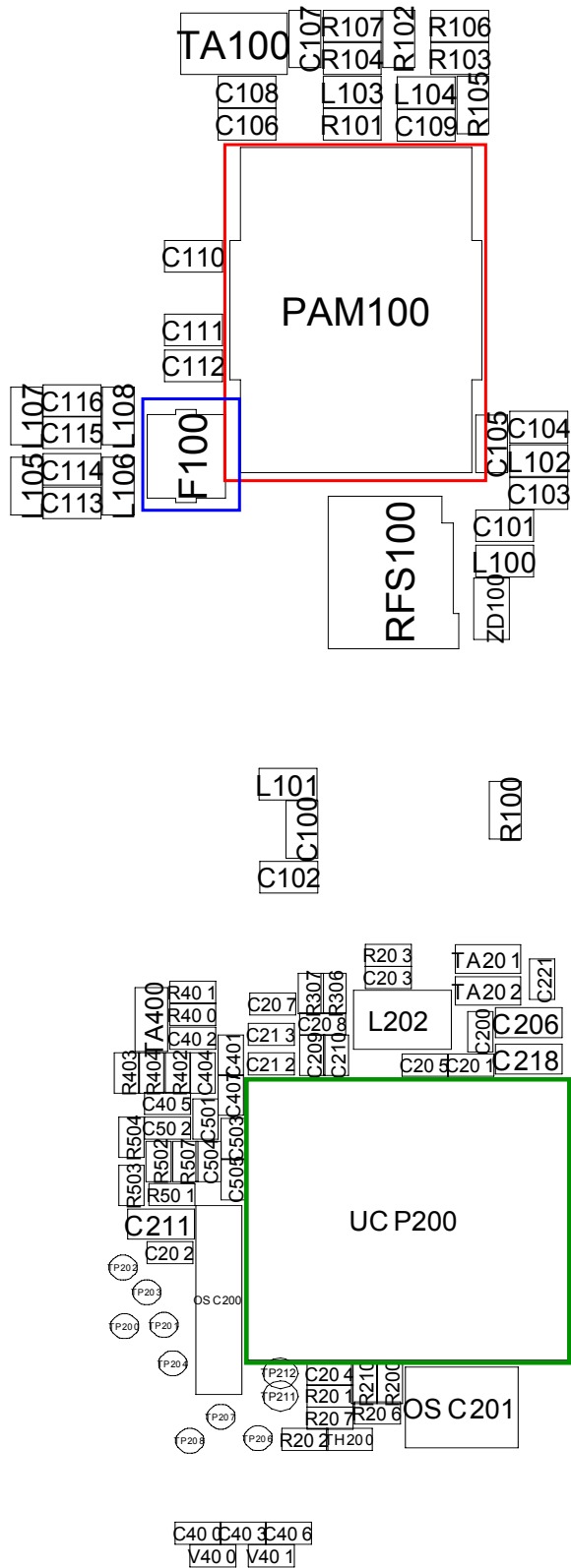


9-11. GSM Receiver

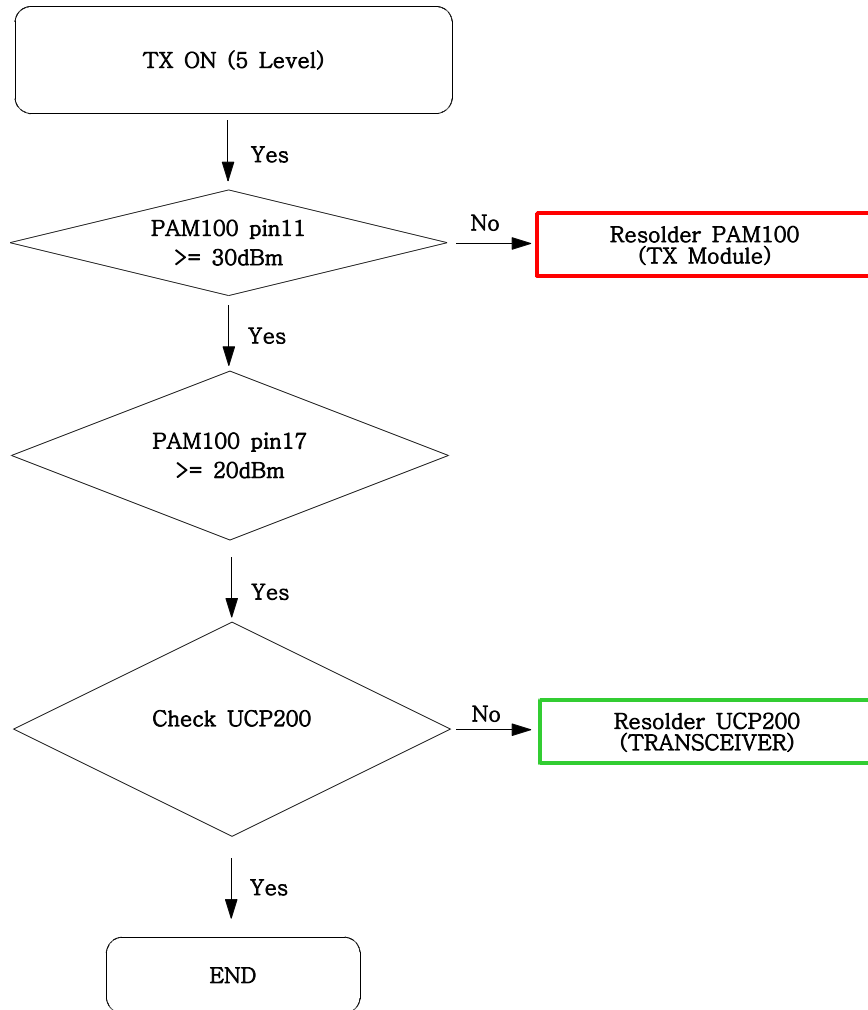


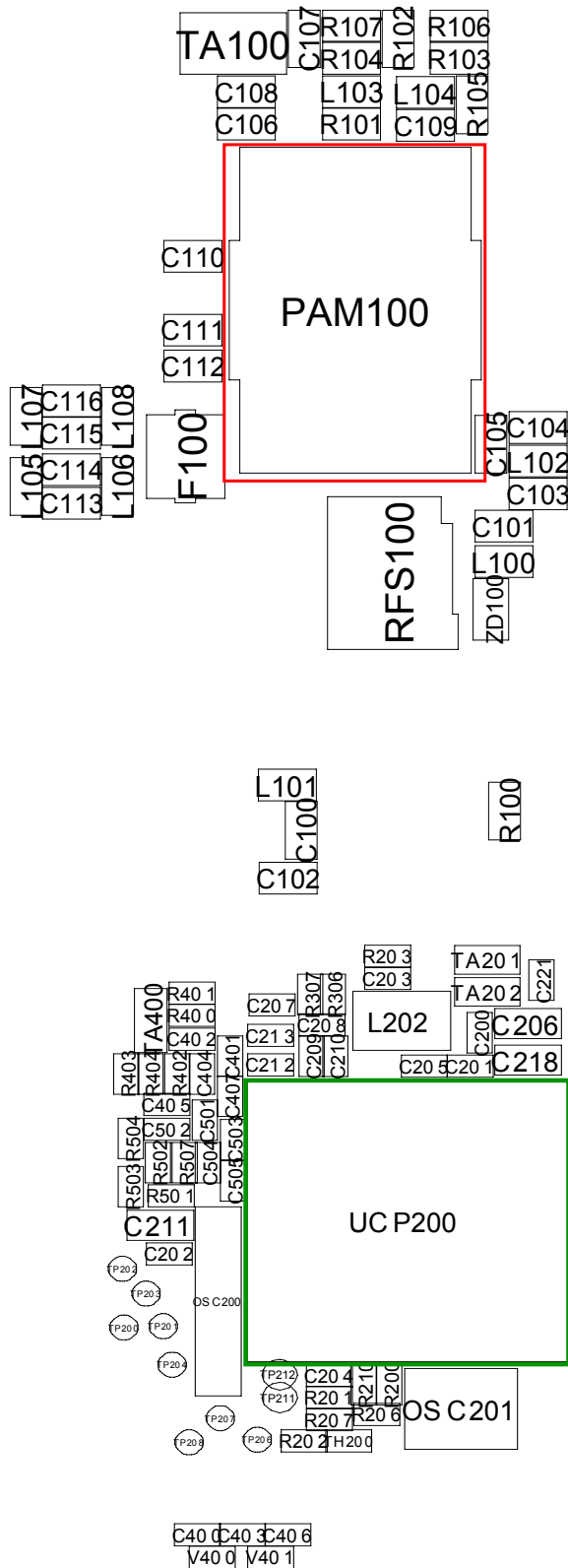




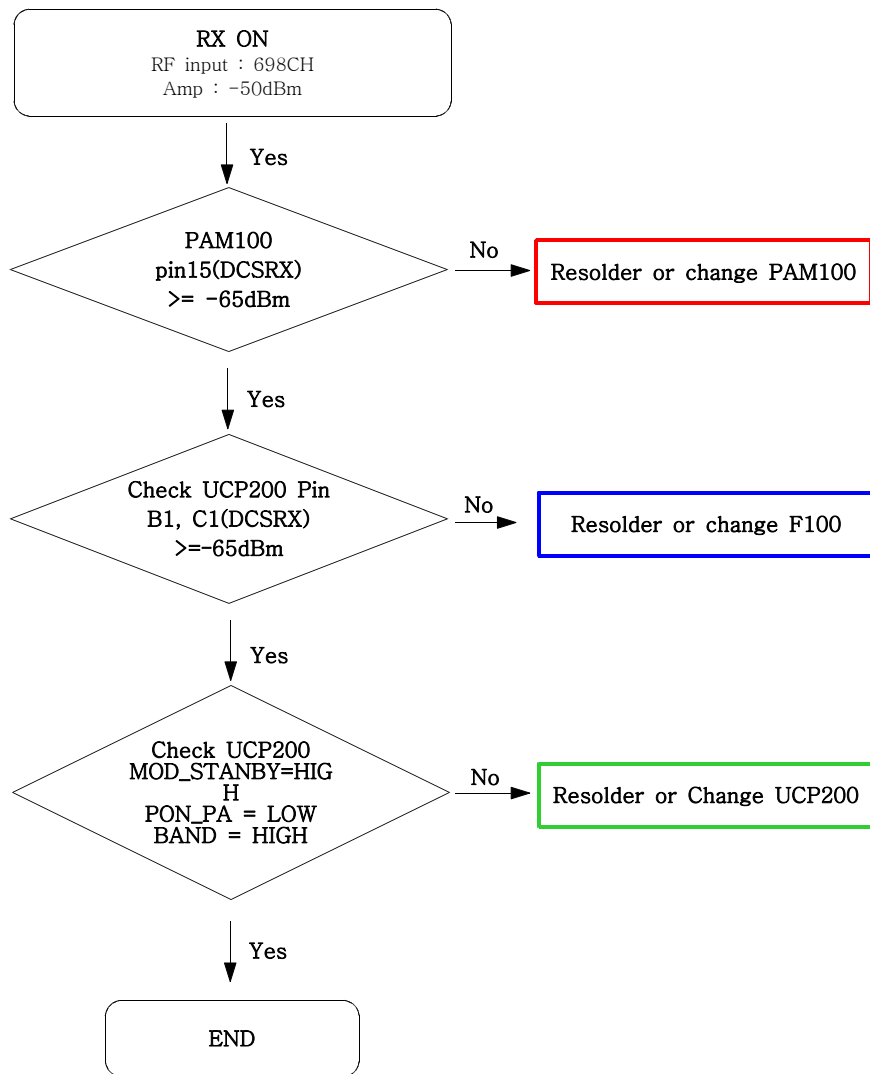


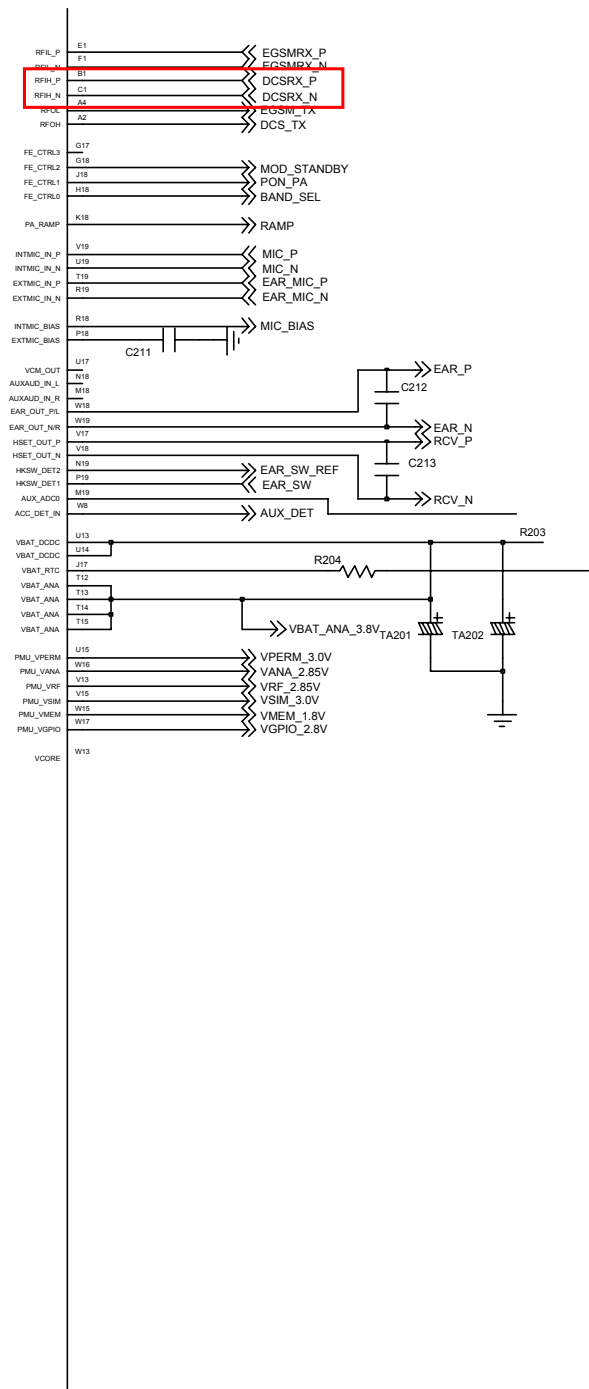
9-12. GSM transmitter





9-13. DCS Receiver





9-14. DCS transmitter

