

# 11. Disassembly and Assembly Instructions

## 11-1. Disassembly

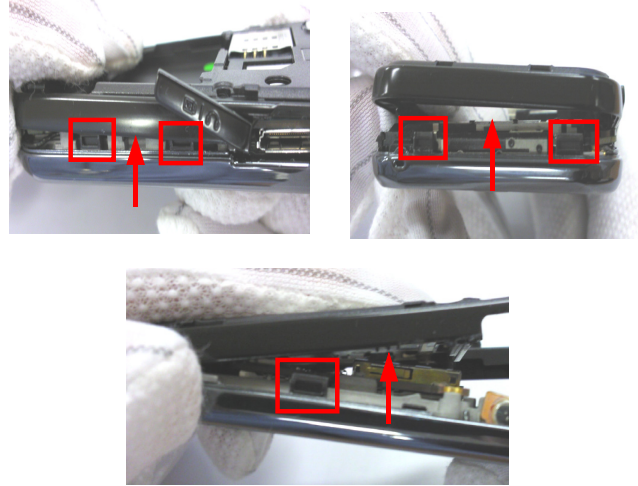
1



Release screws at 6 point.

**DO NOT MAKE SCRATCH ON REAR.**  
Torque Spec. : 1.0~1.2 kgf\*cm

2



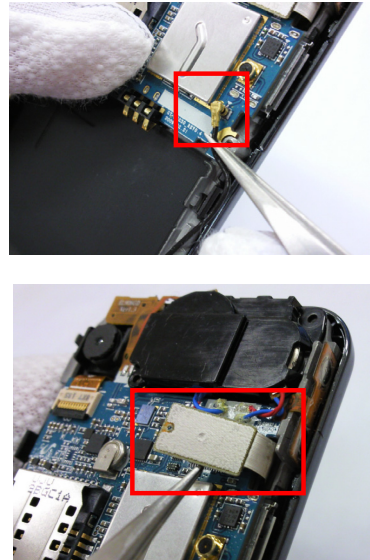
Unlock the right, left side and bottom of REAR by raising it.  
(Refer to the picture.)

3



Disassembled the REAR and side key.

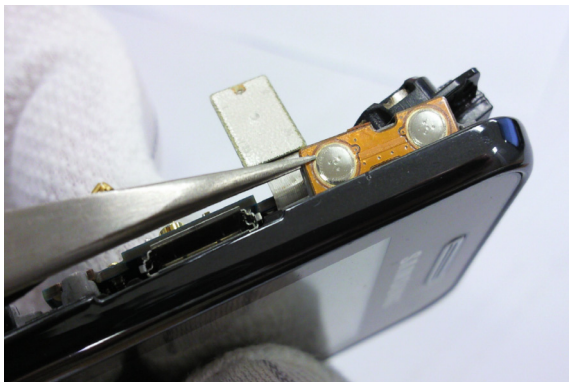
4



Disassemble antenna cable connector from PBA. (Refer to above picture)

**Do Not touch the IC and Don't damage ON PBA.**

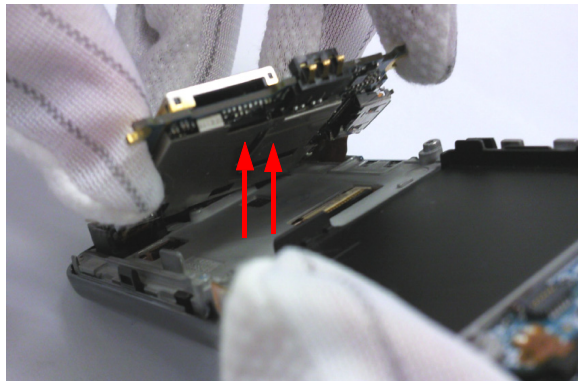
5



To separate PBA, first of all detach the volume key F\_PCB (Refer to above picture)

**Be careful not to tear a FPCB.**

6



Disassemble a PBA from Front ass'y (Refer to the picture)

7



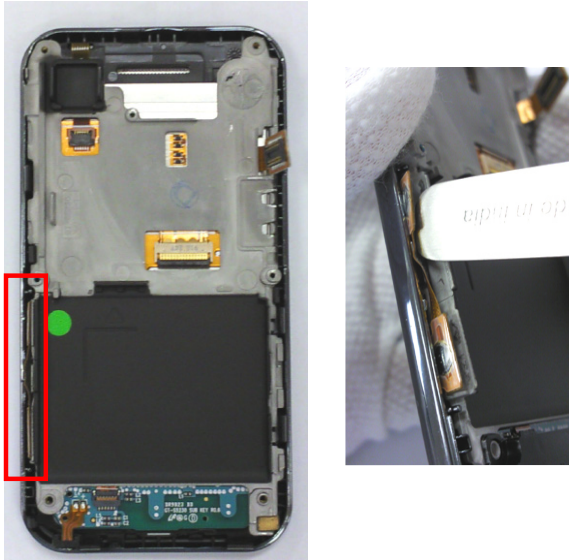
Disassemble Intenna from FRONT.

8



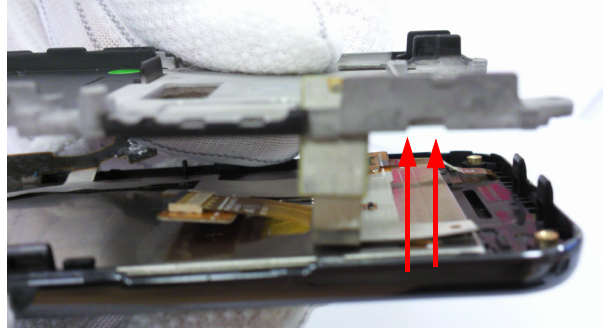
Disassembled Intenna and PBA.

9



To separate bracket, first of all detach the Camera & Holde key F\_pcb

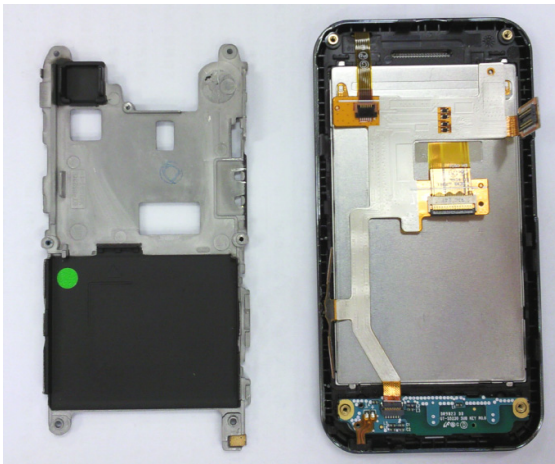
10



Take out connector through the bracket's hole carefully when separating Bracket and FRONT.  
(Refer to the picture.)

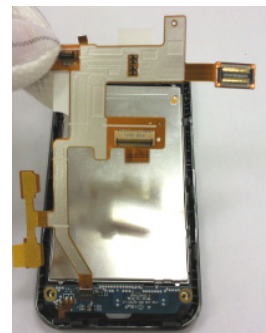
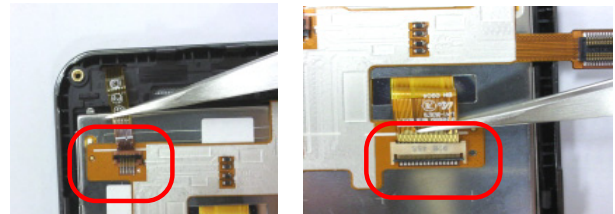
**Be careful to prevent tearing FPCB.**

11



Disassembled bracket and Front.

12

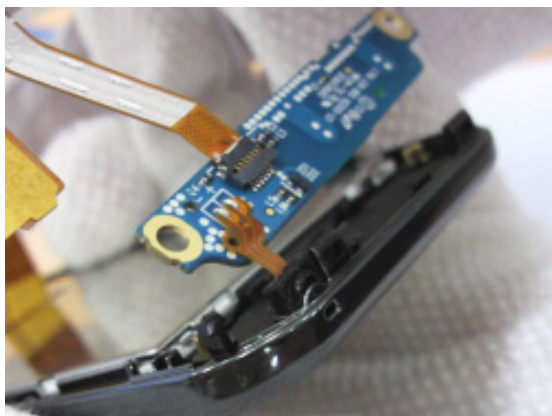


Disassemble Lcd FPCB from Lcd.  
(Refer to the picture.)

**Be careful not to tear a FPCB.**



13



Disassemble MIC from MIC hole.  
(Refer to the picture.)

**Be careful not to tear a MIC FPCB.**

14



Disassembled Lcd FPCB.  
(Refer to the picture.)

15



Disassembled SUB KEY.

16



Disassemble a LCD from Front  
(Refer to the picture)

**Be careful to damage LCD.**

17



Disassembled FRONT and LCD.

18



Take out TSP FPCB through the FRONT's hole carefully when separating FRONT and TSP.  
(Refer to the picture.)

**Be careful not to tear a TSP FPCB.**

19



Disassembled FRONT and TSP.

## 11-2. Assembly

1



Disassembled FRONT and TSP.

2



Insert TSP FPCB through the FRONT's hole carefully when assembling FRONT and TSP. (Refer to the picture.)

**Be careful not to tear a TSP FPCB.**

3



Disassembled FRONT and LCD.

4



After 2 points setting , combine FRONT with LCD.



5



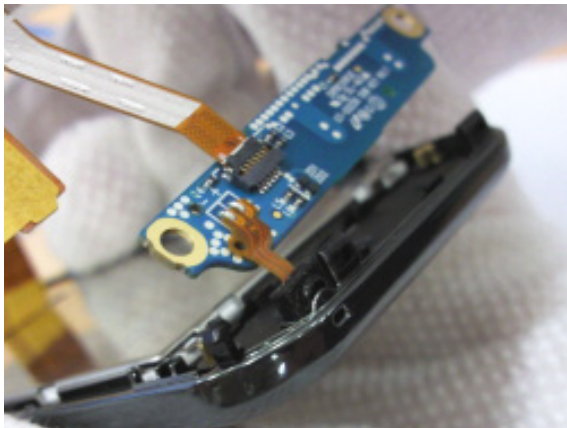
Assemble SUB KEY and FRONT.

6



Assemble LCD FPCB and FRONT.

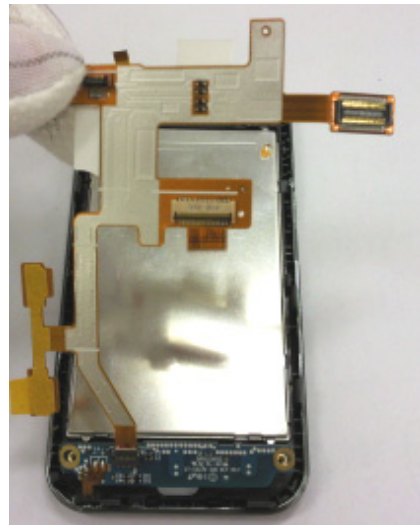
7



First of all, MIC insert the hole.

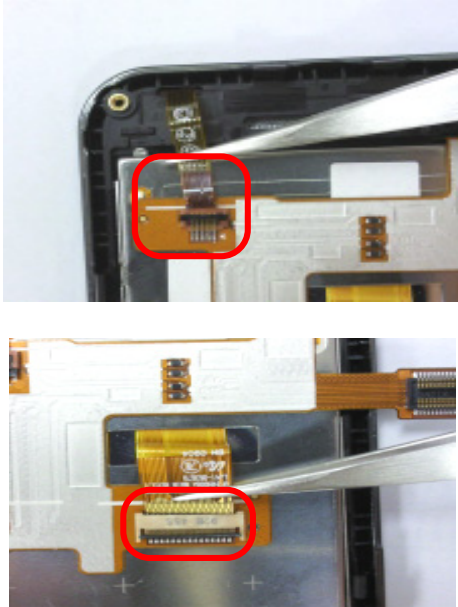
**Be careful not to tear a MIC FPCB.**

8



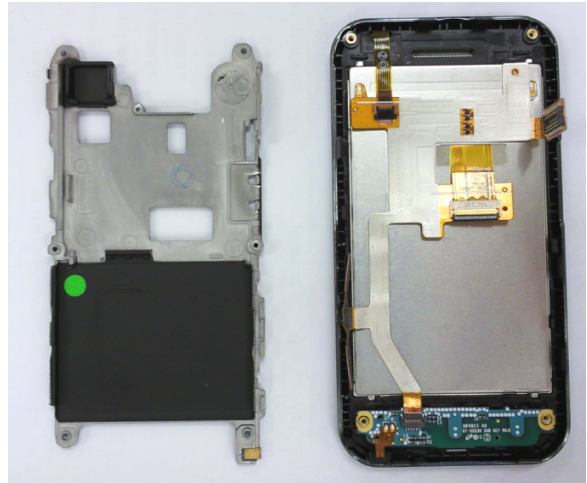
And LCD FPCB attach the LCD.

9



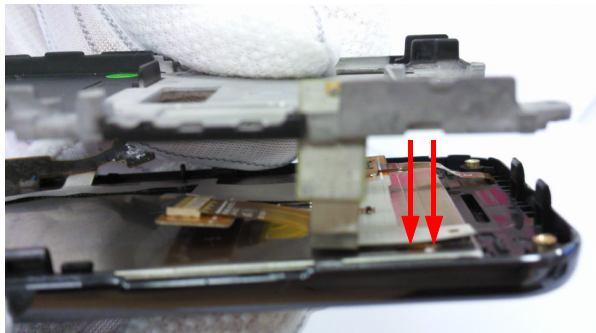
Finally, insert TSP FPCB AND LCD FPCB.

10



Disassembled Bracket and Front.

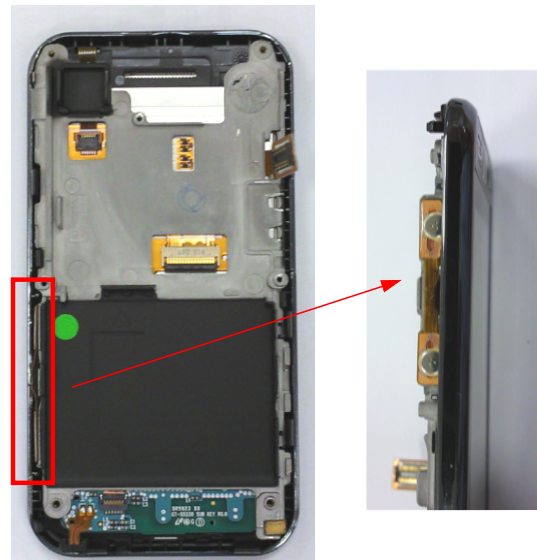
11



Insert a connector through the bracket's hole carefully when assembling bracket and front. (Refer to the picture.)

**DO NOT MAKE TEAR FPCB.**

12



Attach FPCB on the Bracket

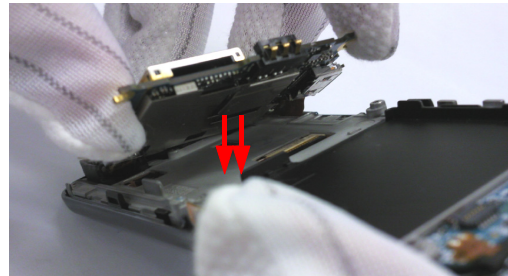


13



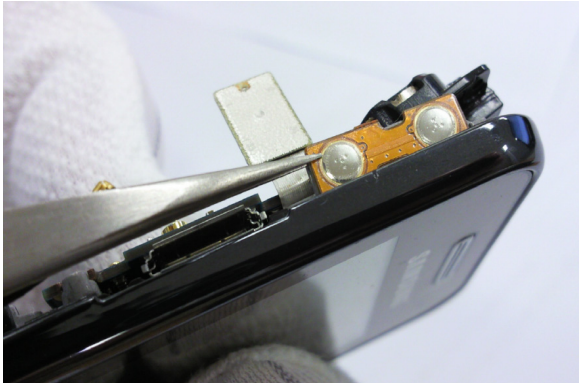
Assemble Bracket and Front.

14



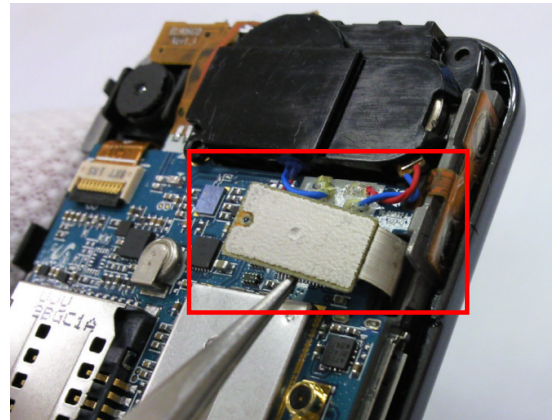
To assemble PBA, first of all, place camera and SPK on the bracket.  
(Refer to the picture.)

15



Attach FPCB on the bracket  
(Refer to the picture.)

16



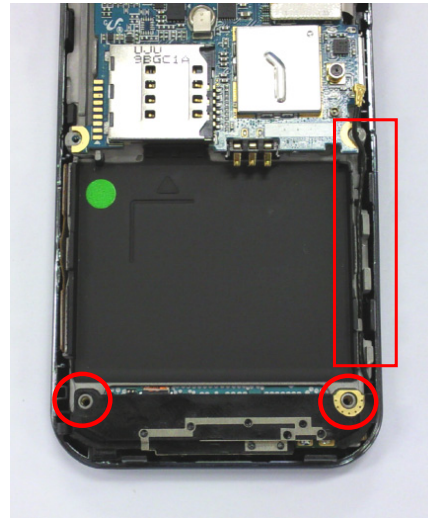
Assemble a Connector.  
(Refer to the picture)

17



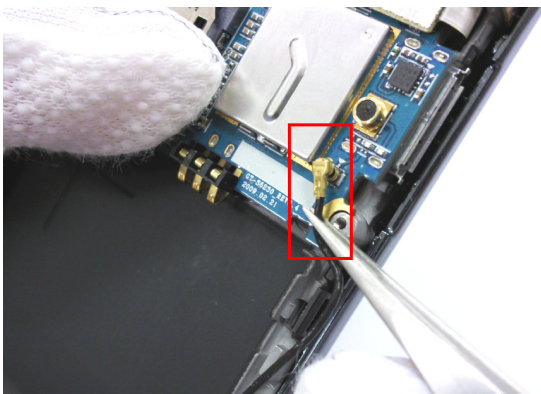
Assemble an Intenna.  
(Refer to the picture)

18



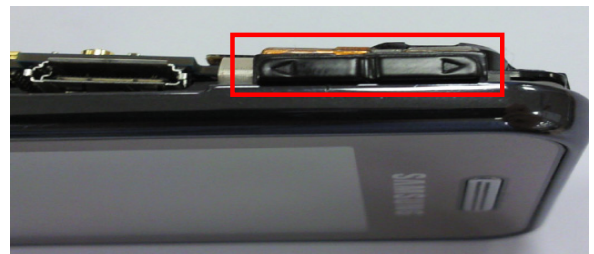
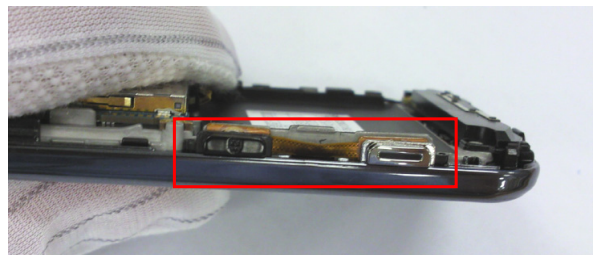
Insert a Intenna cable to the bracket's  
hole. Fit Intenna's 2 hole at a screw boss.  
(Refer to the picture.)

19



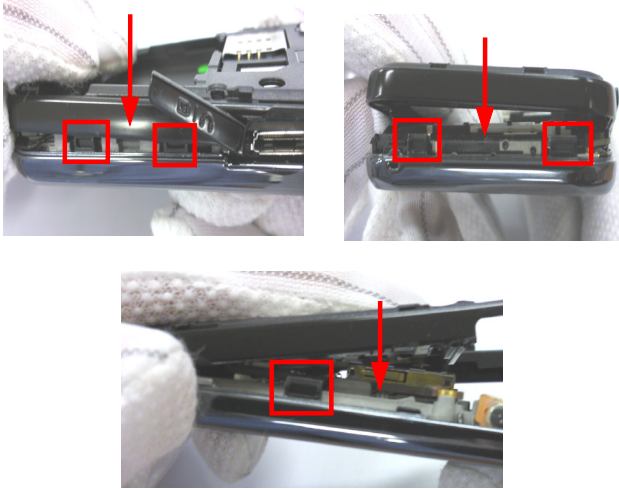
Assemble antenna cable connector to PBA  
(Refer to the picture)

20



Insert the key.

21



Lock the right, left side and bottom of REAR by closing it.  
(Refer to the picture.)

22



Drive screws at 6 point.

**DO NOT MAKE SCRATCH ON REAR.**  
Torque Spec. : 1.0~1.2 kgf\*cm