

11. Disassembly and Assembly Instructions

11-1. Disassembly

1

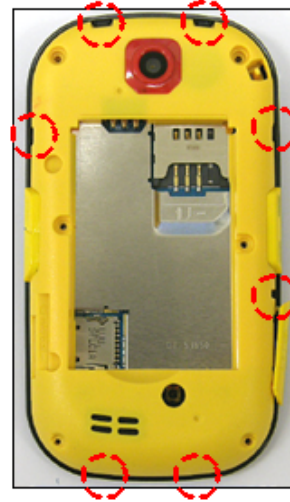
1) Unscrew the 6 points.



2

1) Separate the REAR CASE.

HOOK 7 POINT



※ Caution

1) Be care of scratch and molding damage.

※ Caution

1) Be care of scratch and molding damage.

3

1) Unscrew the 2 points.



4

1) Separate the LCD and TSP CONNECTORS then disassemble the 2 hook.



※ Caution

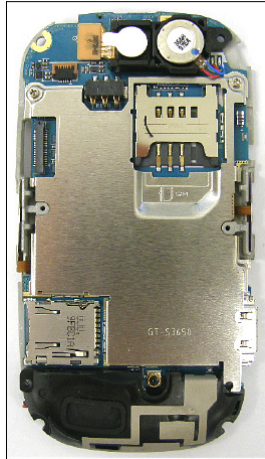
1) Be care of damage to INTENNA

※ Caution

1) Be care of scratch and molding damage.

5

1) Separate the BRACKET ASS'Y from the FRONT ASS'Y.



6

1) Separate LCD and KEYPAD from the FRONT CASE.



※ Caution

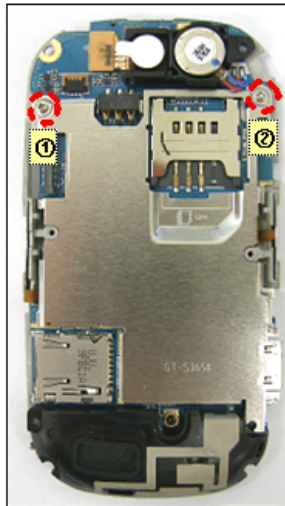
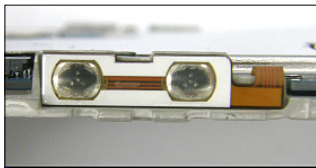
1) Be care of scratch and molding damage.

※ Caution

1) Be care of scratch and molding damage.
2) Be care of damage to the LCD.

7

1) Detach the SIDE KEY and CAM KEY FPCB from BRACKET.
2) Unscrew the 2 points.



8

1) Separate the MOTOR/SHIELD CAN /ANTENNA/CAMERA/ from the PBA.



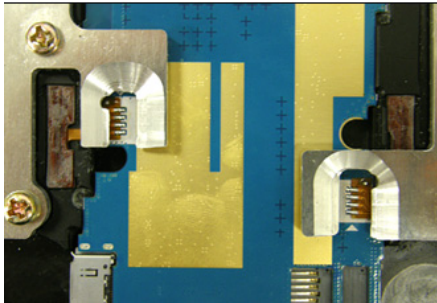
※ Caution

1) Be care of damage to FPCB.

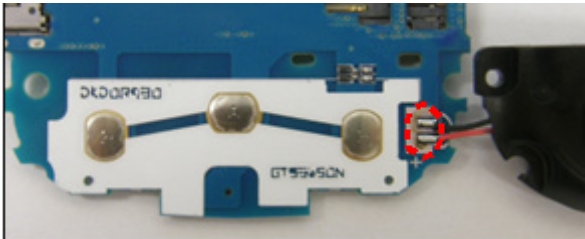
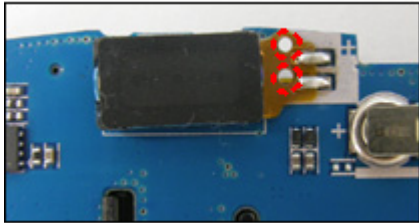
※ Caution

11-2. Assembly

1) 1) Solder the SIDE KEY,CAM KEY.



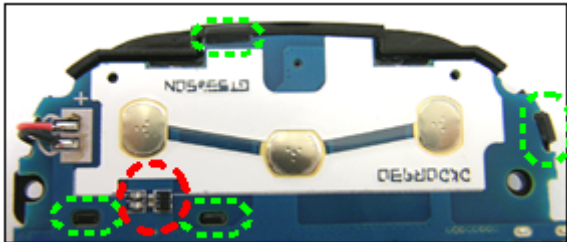
2) 1) Solder the RECEIVER and SPEAKER.



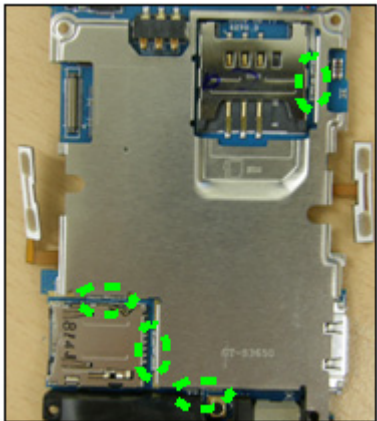
※ Caution
1) Be care of damage the FPCB.

※ Caution
1) Be care of damage the RECEIVER FPCB & SPK WIRE.

3) 1) Assemble the SPEAKER MODULE to PBA.



4) 1) Assemble the SHIELD CAN.

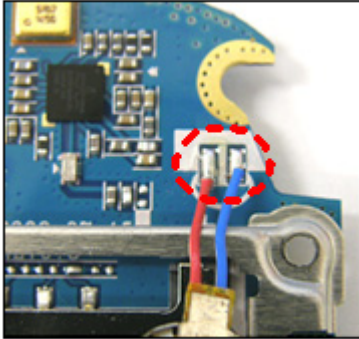


※ Caution
1) Be care of damage to INTENNA PATTERN and PBA.

※ Caution
1) Be care of damage to PBA.

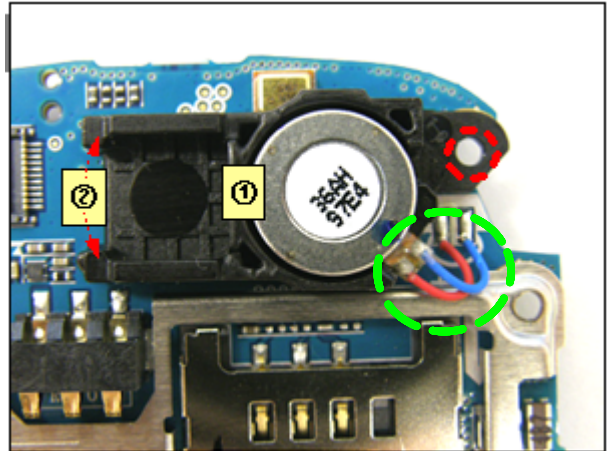
5

1) Solder the MOTOR.



6

1) Assemble the CAMERA CARRIER.
2) Assemble the MOTOR.



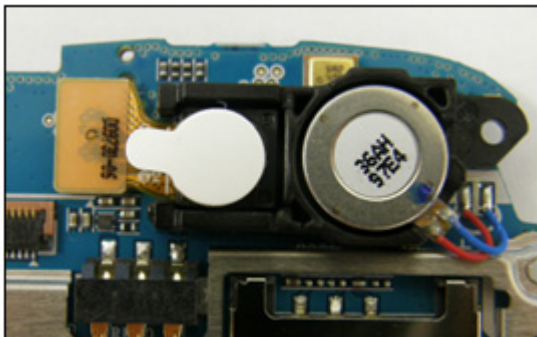
※ **Caution**

※ **Caution**

1) Be care of damage the MOTOR WIRE.

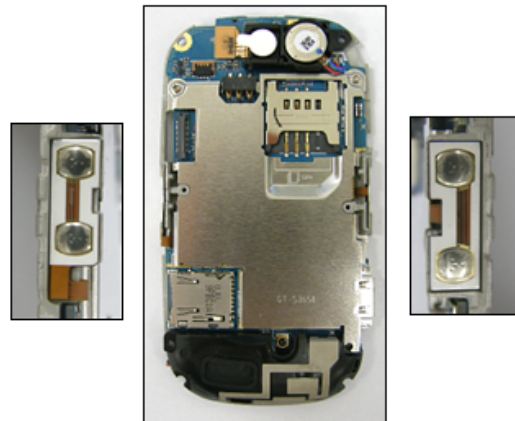
7

1) Assemble the CAMERA and connect the CONNECTOR.



8

1) Assemble the BRACKET.
2) Attach the SIDE KEY and CAM KEY FPCB.



※ **Caution**

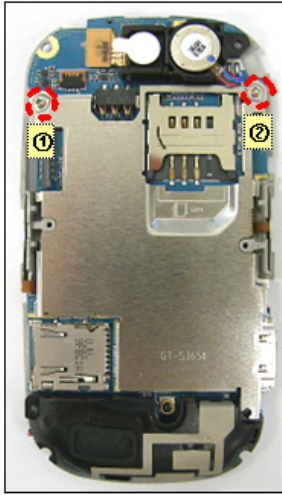
1) Be care of damage to CAMERA CONNECTOR & FPCB.

※ **Caution**

1) Be care of damage the SIDE KEY/CAMERA KEY FPCB.

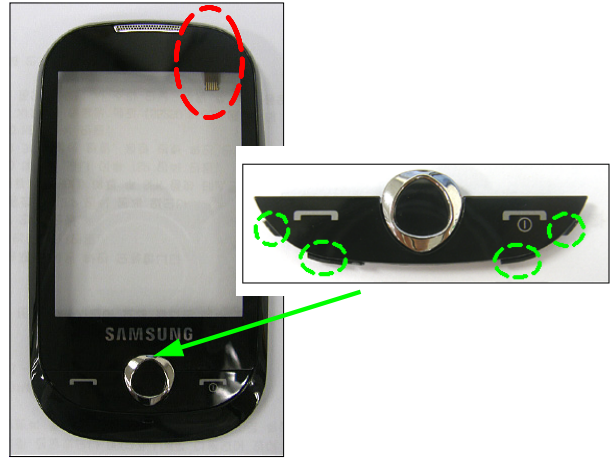
9

1) Screw 2 points.



10

1) Attach the TSP.
2) Assemble the KEYPAD.



※ **Caution**

※ **Caution**

1) Be care of scratch and molding damage.
2) Be care of damage to TSP FPCB.

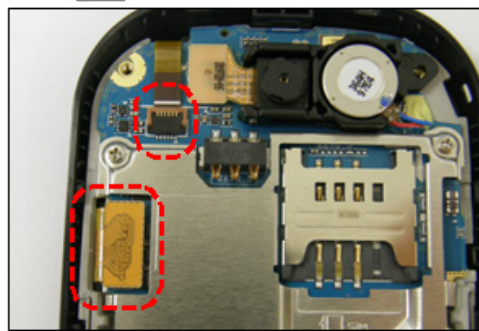
11

1) Assemble the LCD.



12

1) Assemble the PBA the to FRONT ASS'Y.
2) Connect the TSP connector & LCD connector.



※ **Caution**

1) Be care of damage to F-CPB and LCD.
2) Be care of scratch and molding damage.

※ **Caution**

1) Be care of damage to F-CPB.
2) Be care of scratch and molding damage.

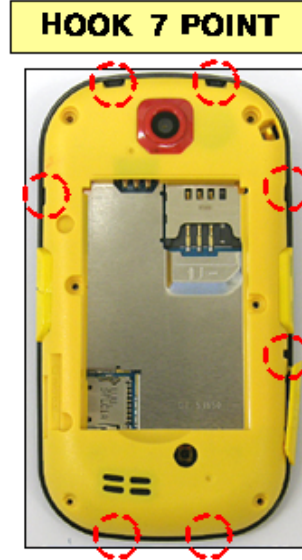
13

1) Screw 2 points.



14

1) Assemble the REAR CASE.



※ Caution

1) Be care of scratch and molding damage.

※ Caution

1) Be care of scratch and molding damage.

15

1) Screw 6 points.



※ Caution

1) Be care of scratch and molding damage.