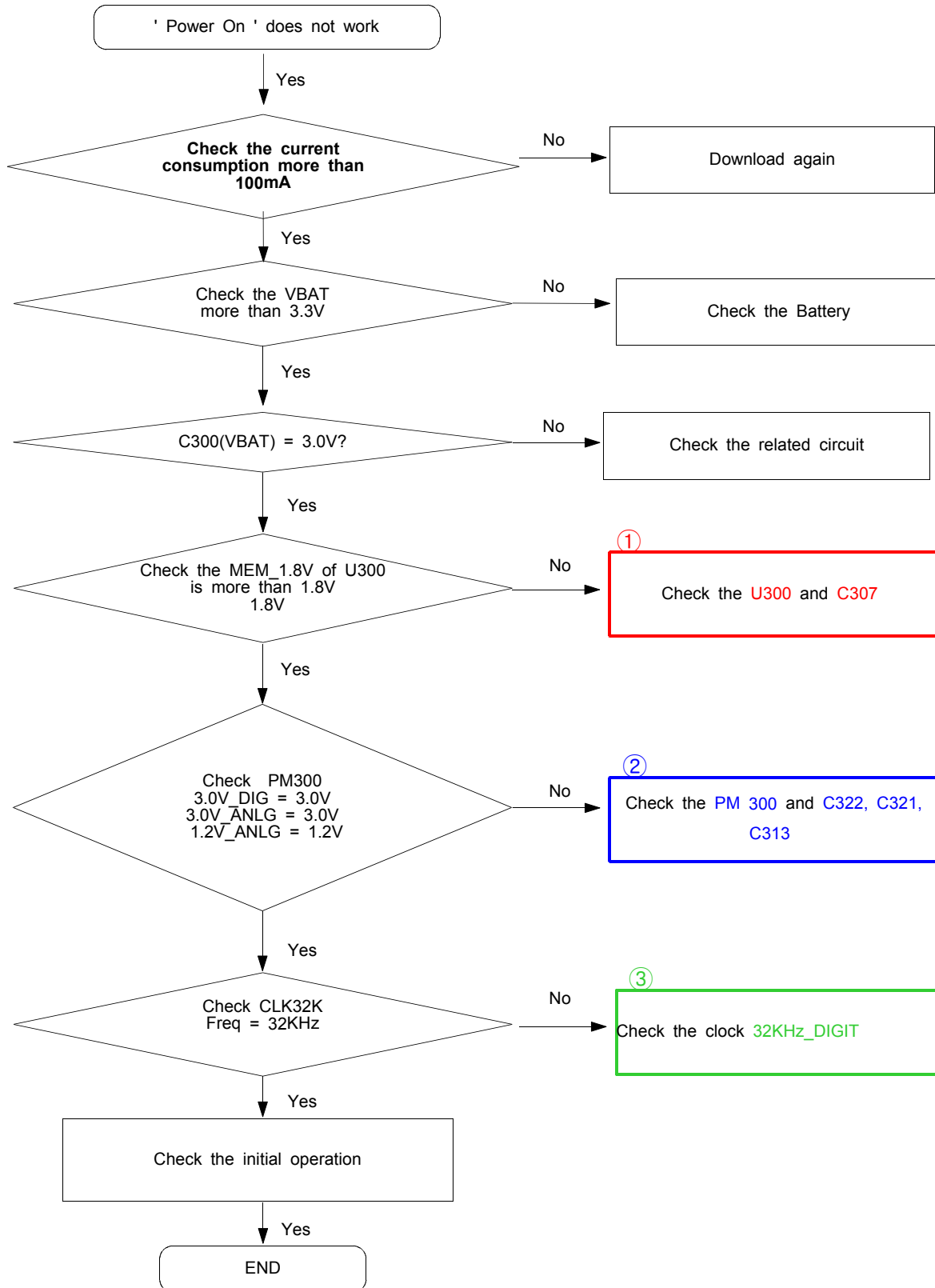
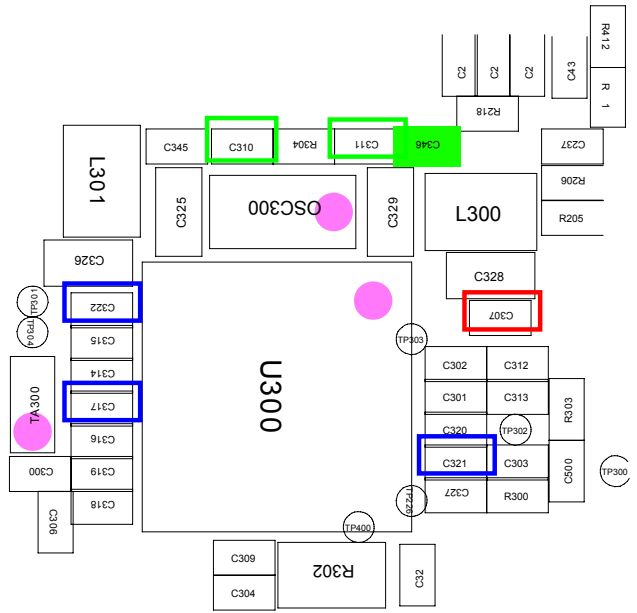
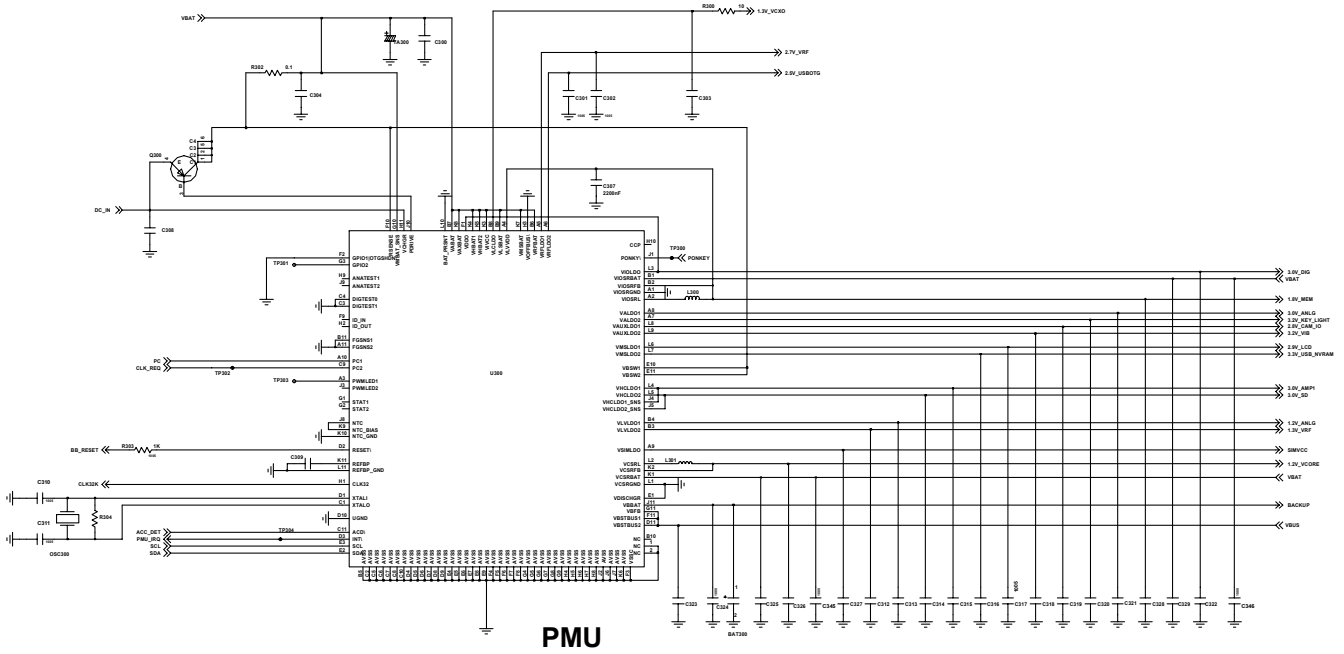


# 9. Flow Chart of Troubleshooting

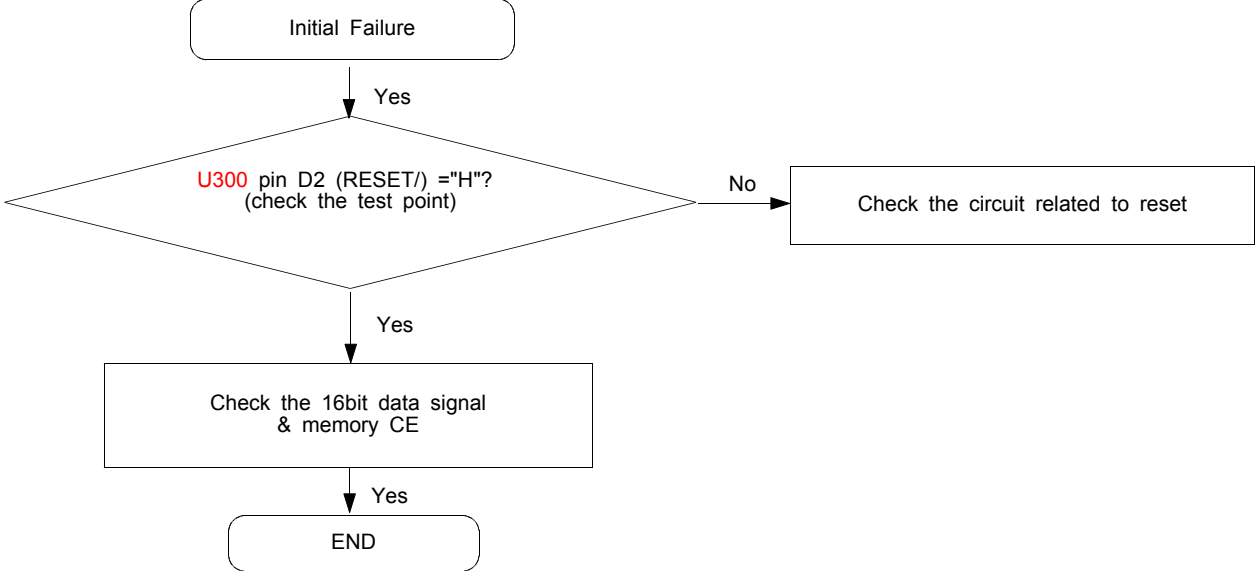
## 9-1. Power On

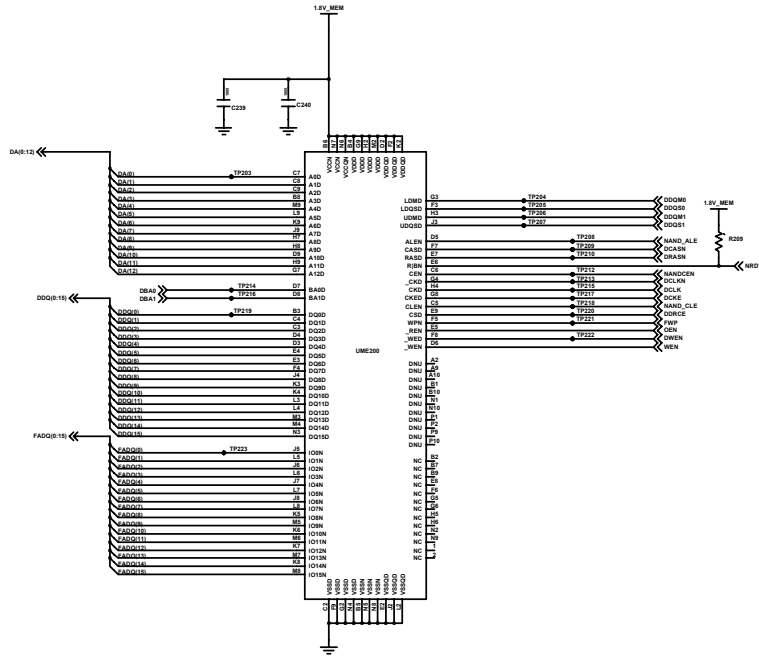


# Flow Chart of Troubleshooting

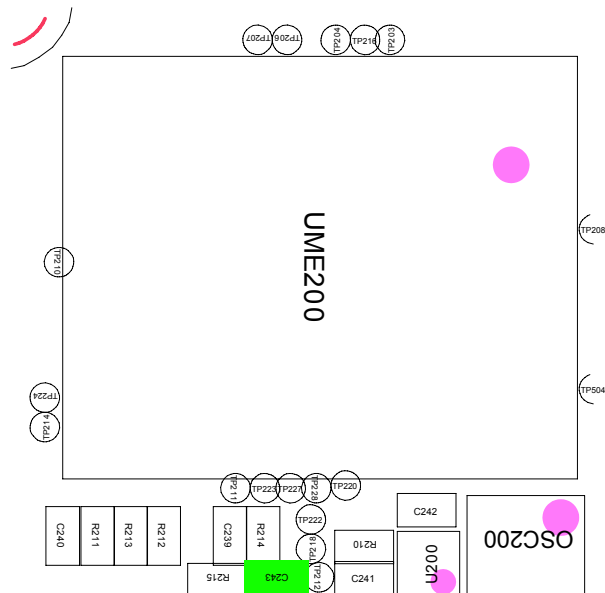


9-2. Initial

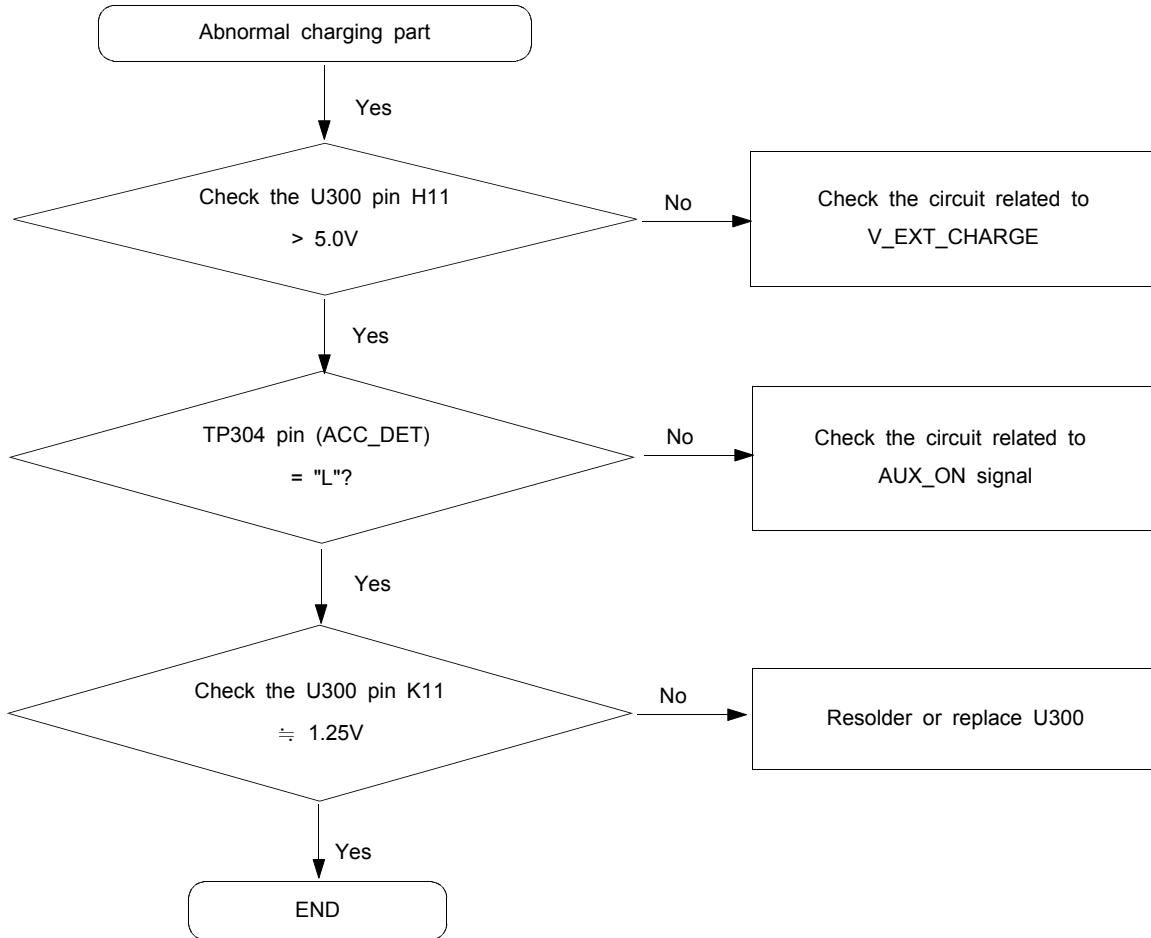




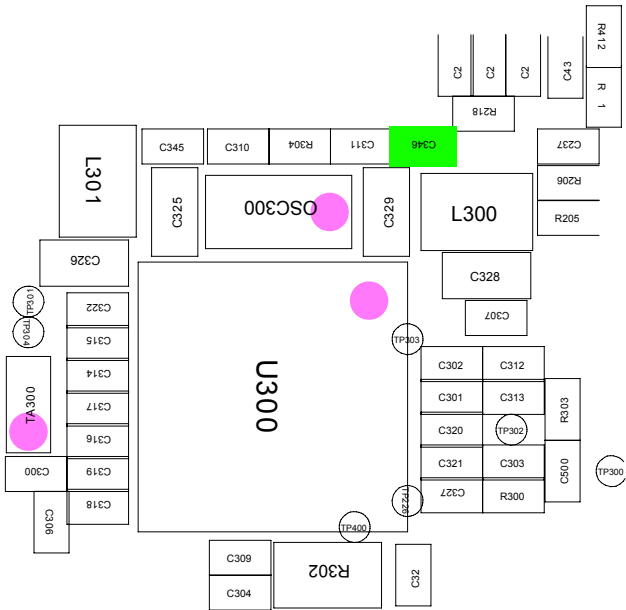
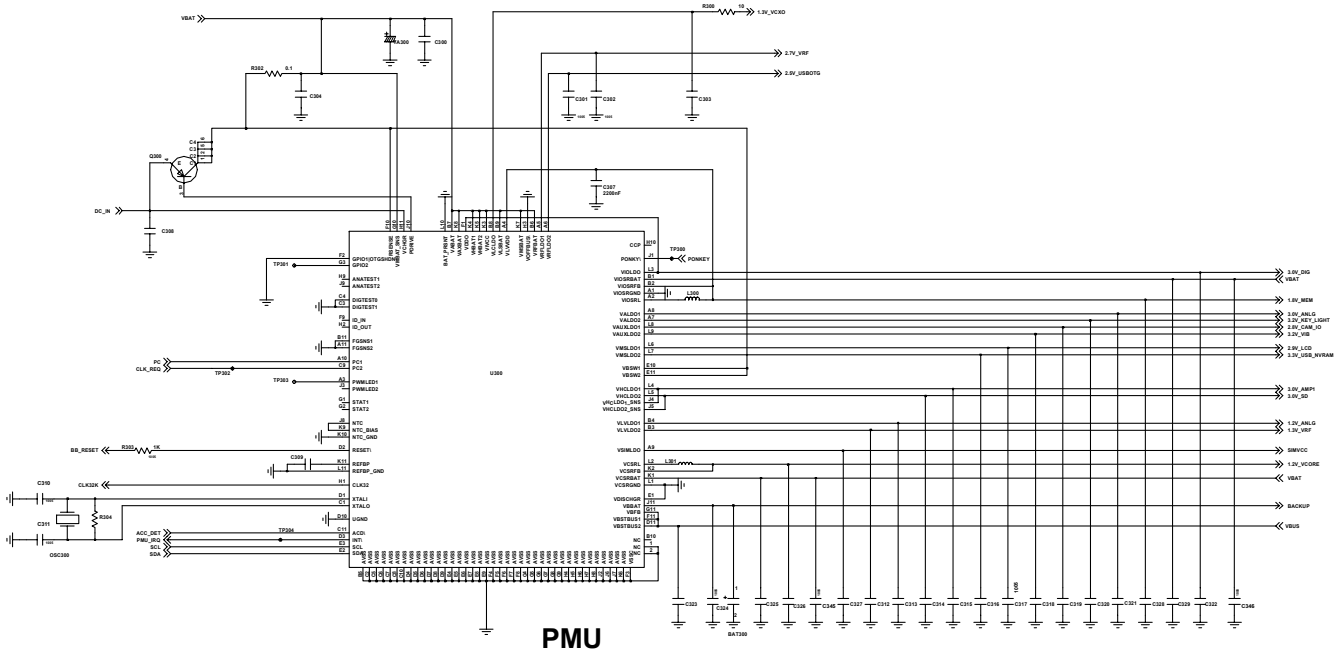
**MEMORY(Large Block NAND)  
(1Gb NAND + 512Mb DDRAM)**



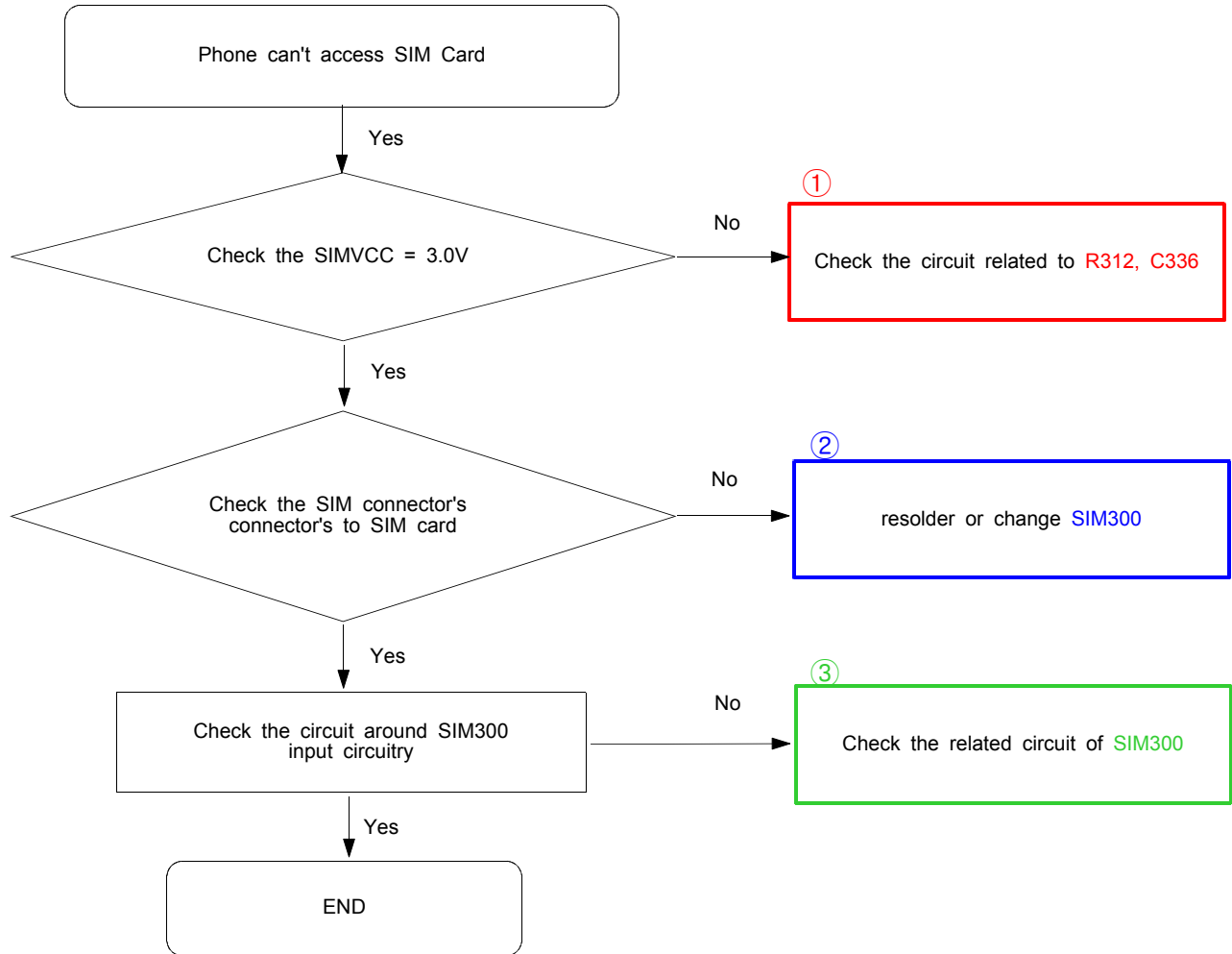
### 9-3. Charging Part

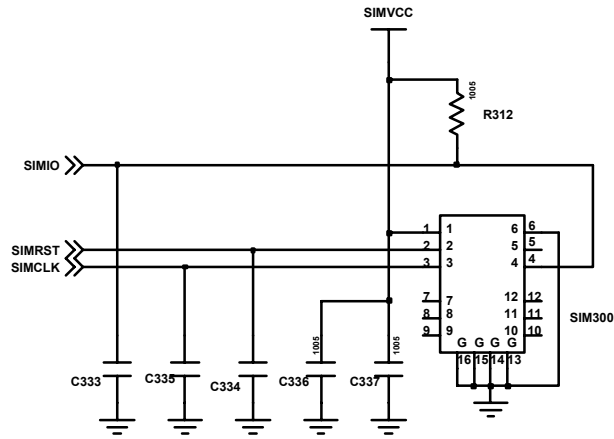


# Flow Chart of Troubleshooting



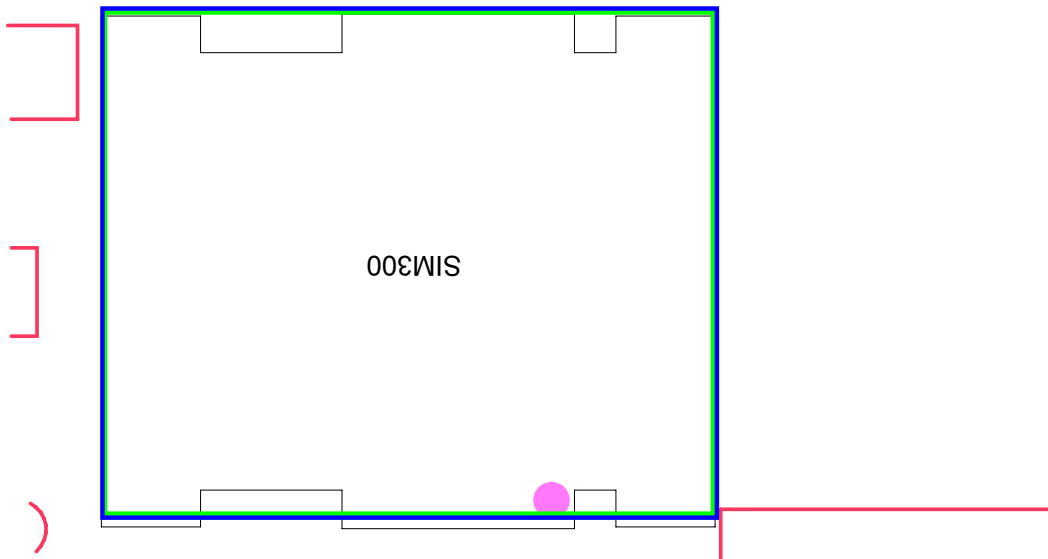
### 9-4. Sim Part





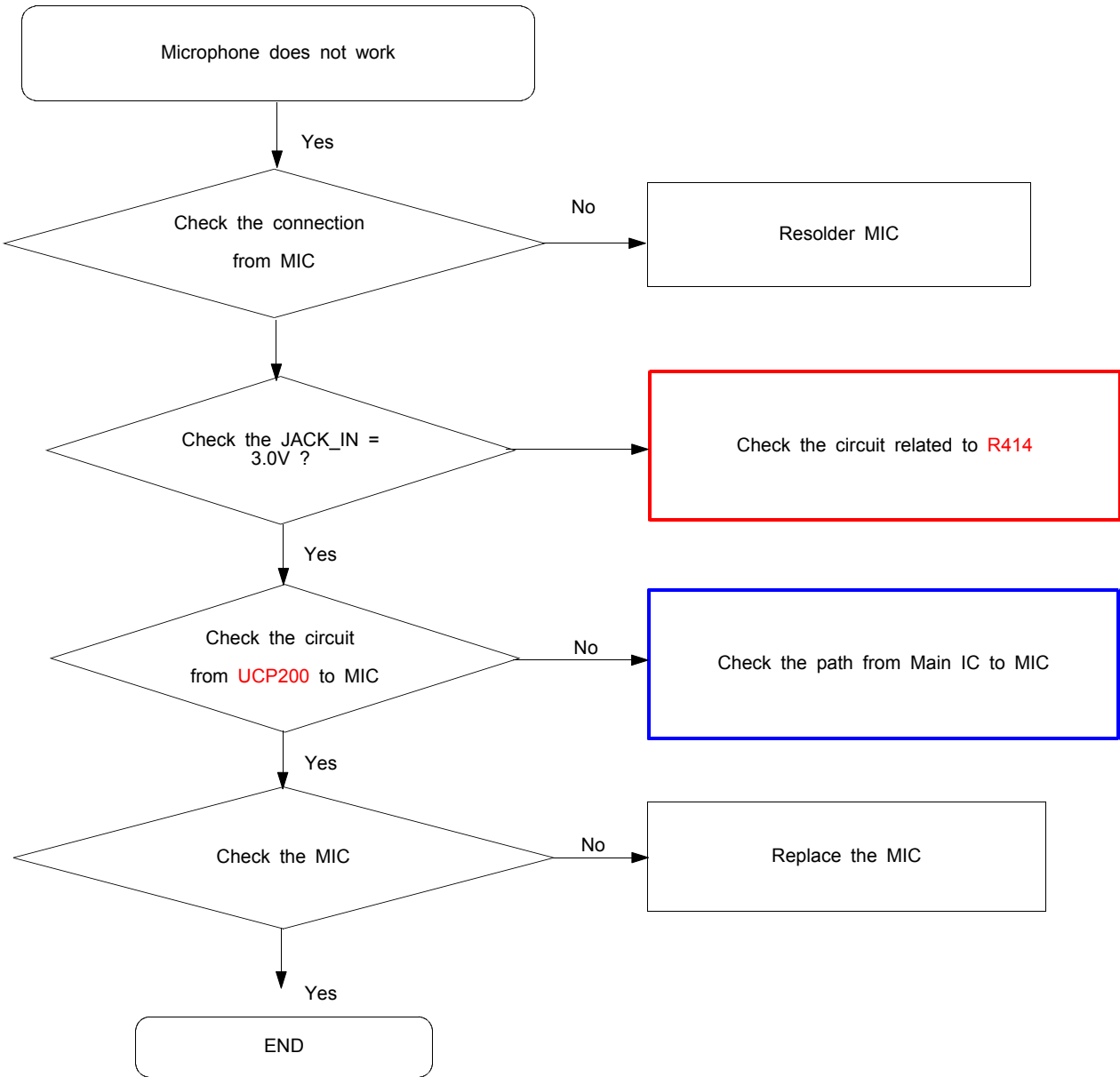
# SIM CONNECTOR

C102	C423	00K0Z			
R222	C334	C335	R312	C336	C337

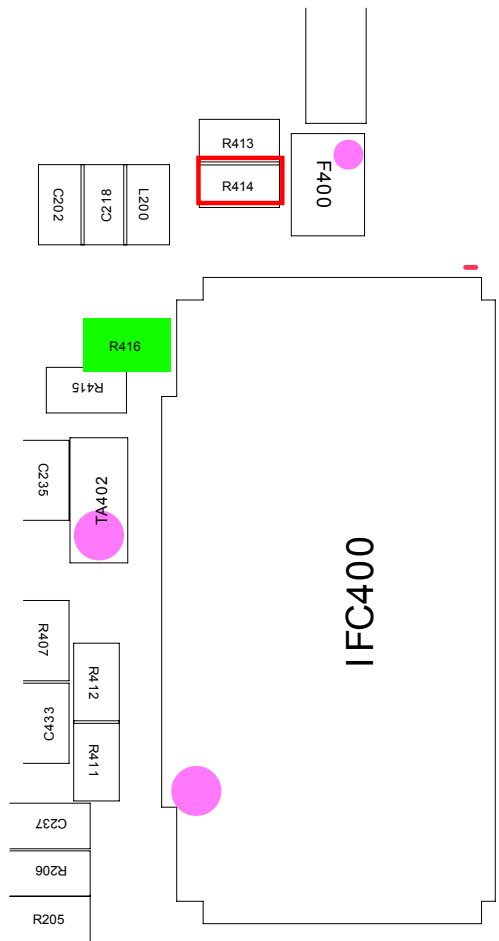
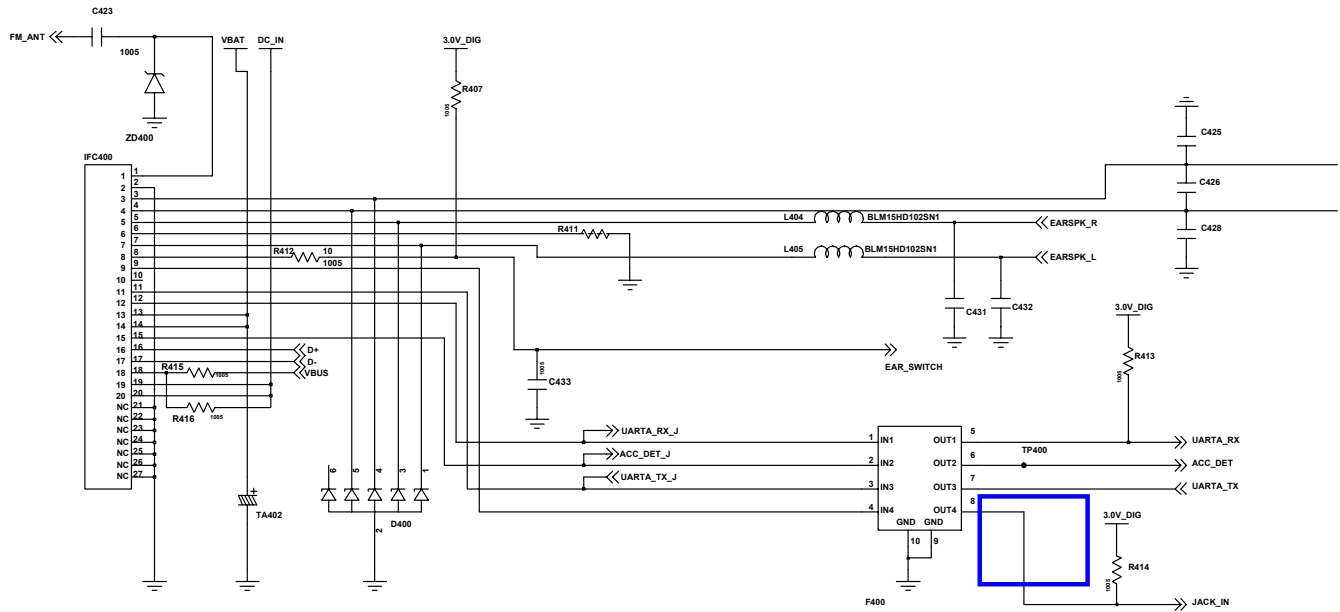




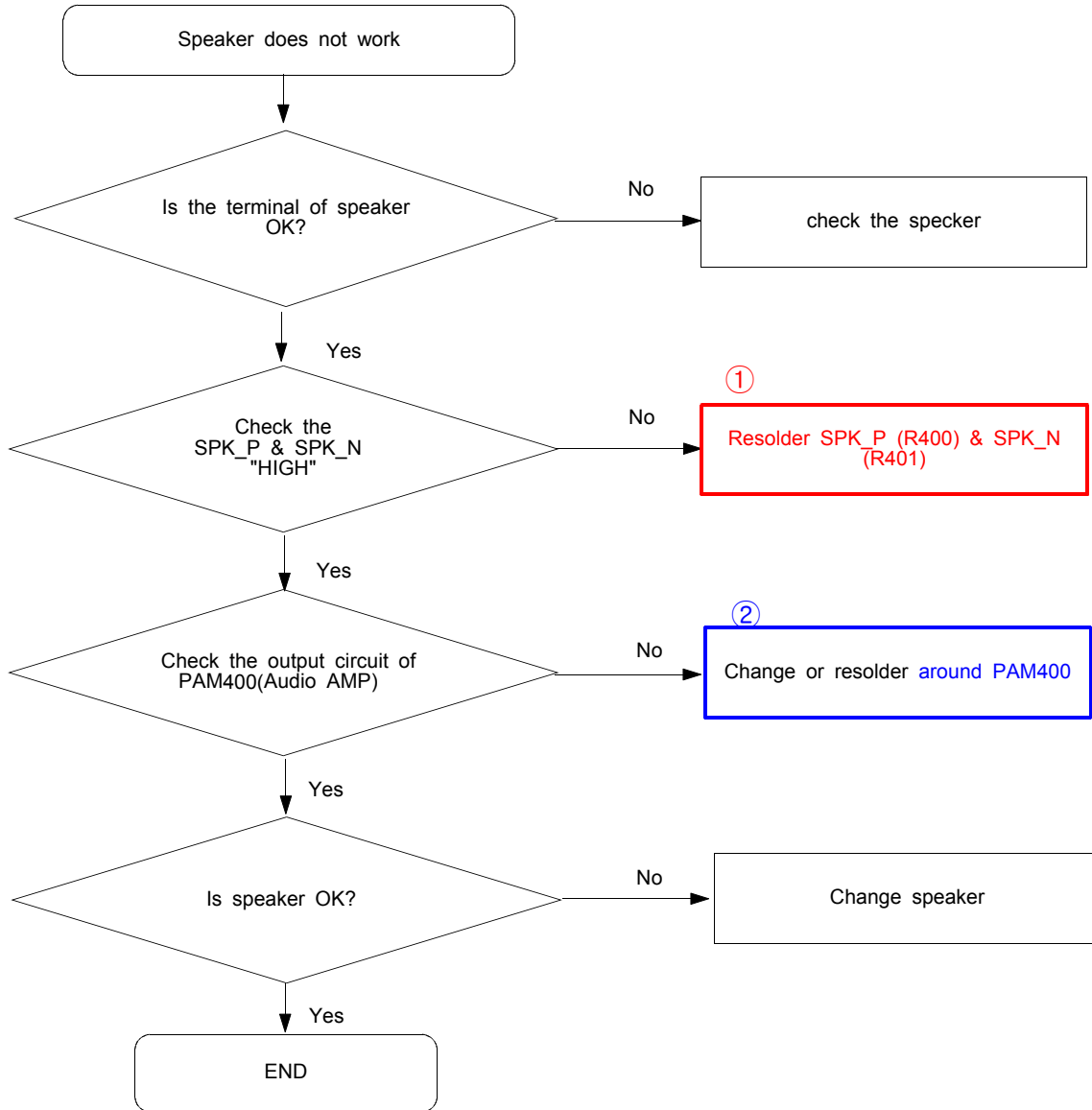
### 9-5. Microphone Part

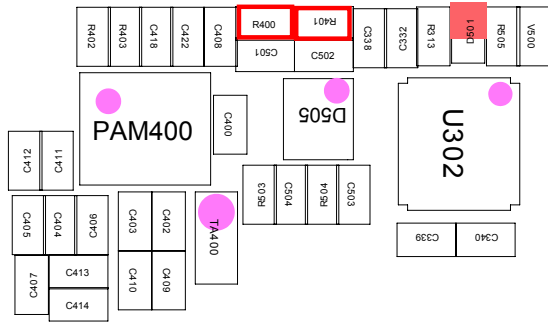
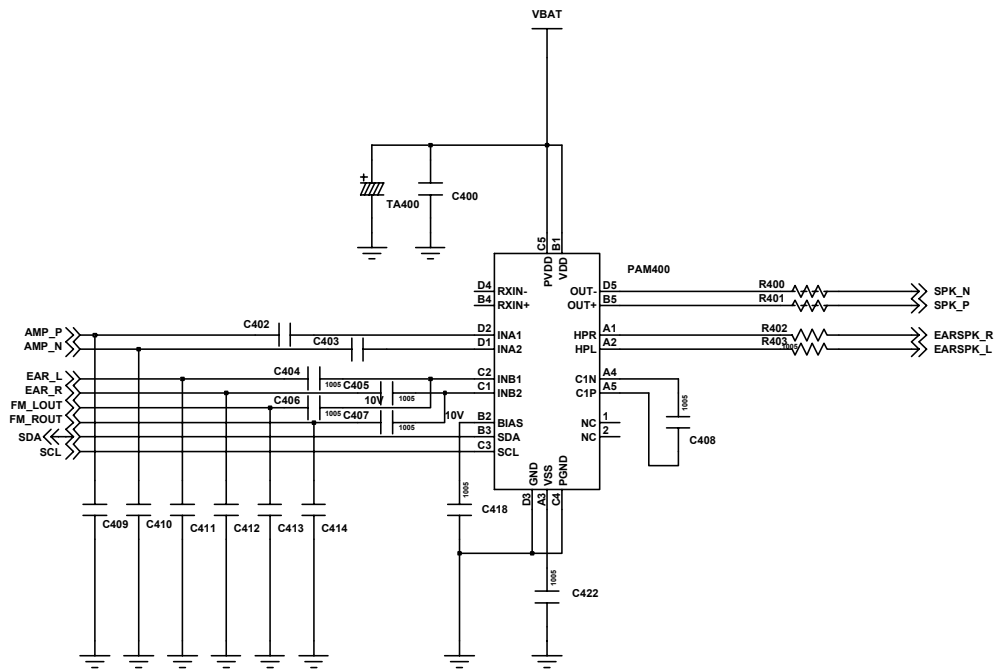


# Flow Chart of Troubleshooting

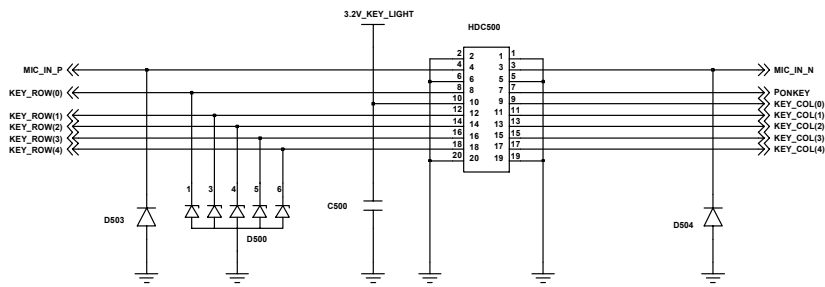
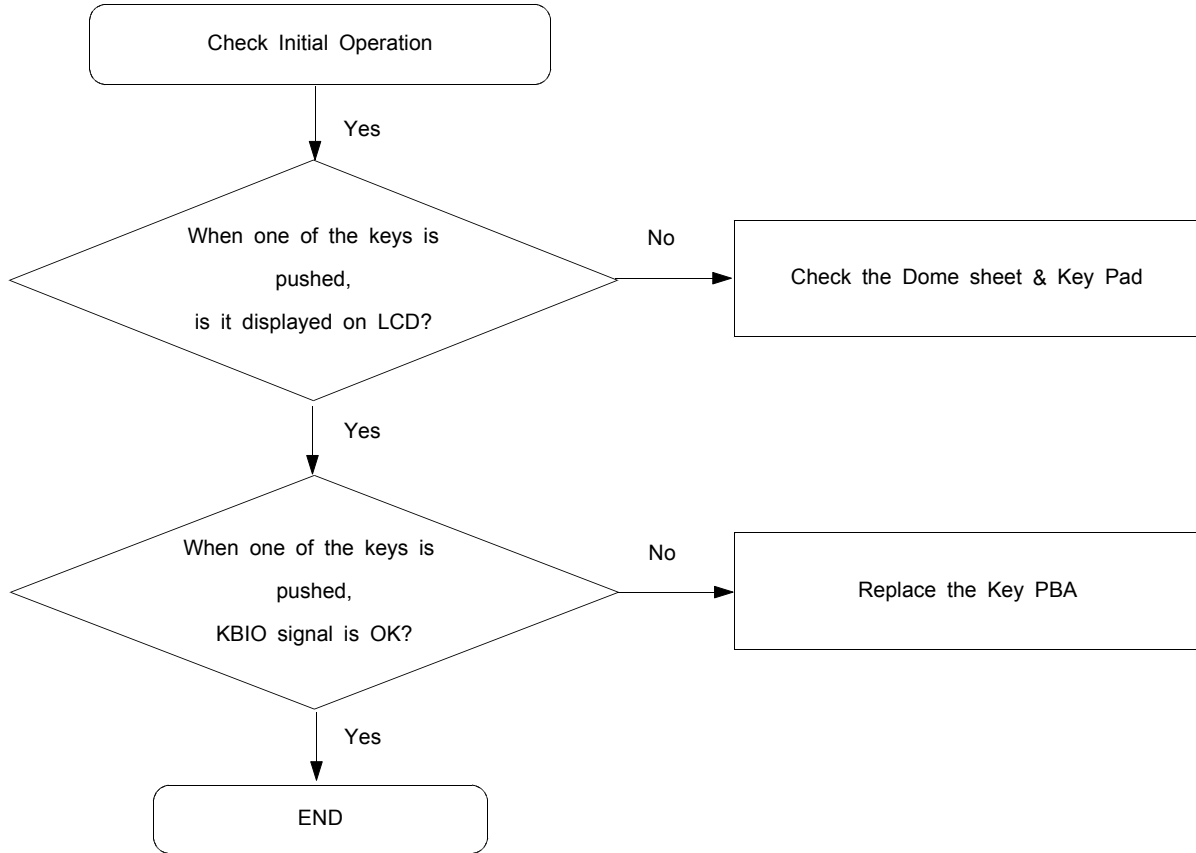


### 9-6. Speaker Part(Melody)

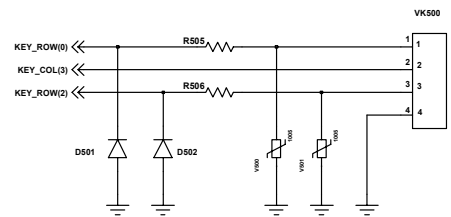




### 9-7. Key Data Input

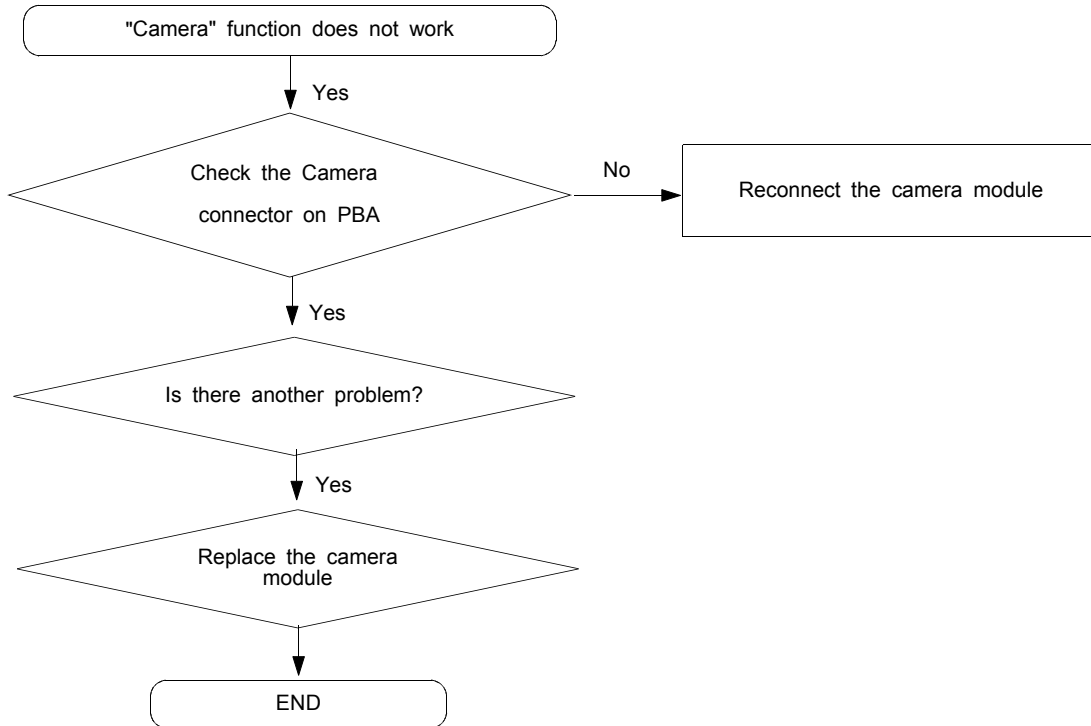


KEY CONNECTOR

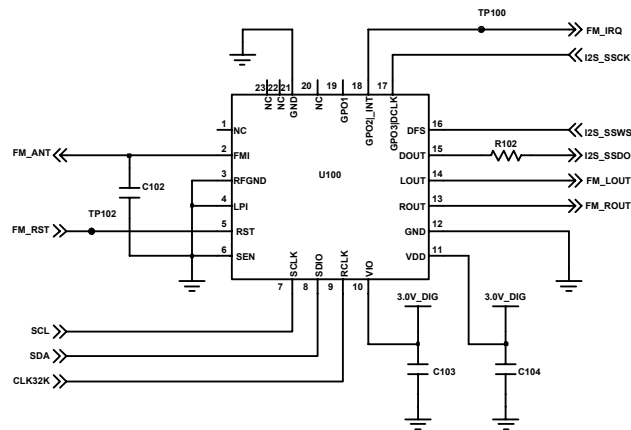
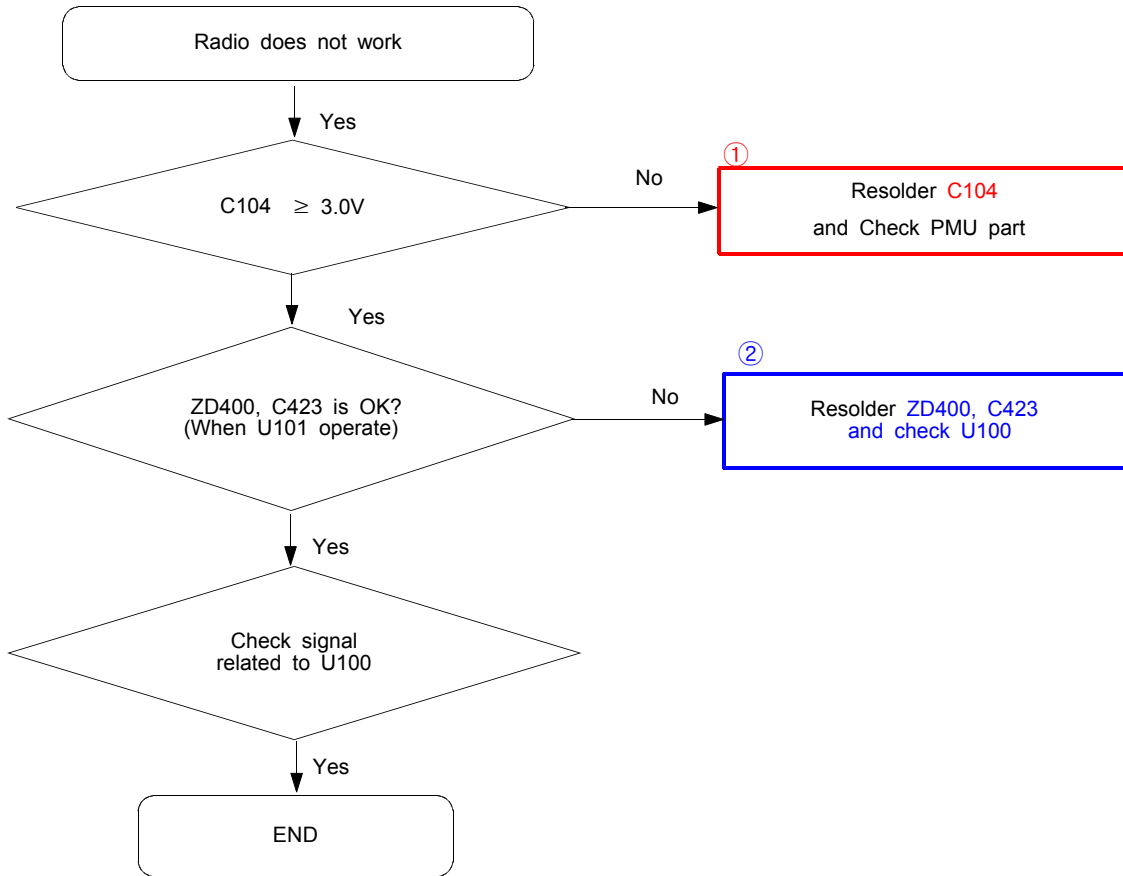


VOLUME KEY

## 9-8. Camera part

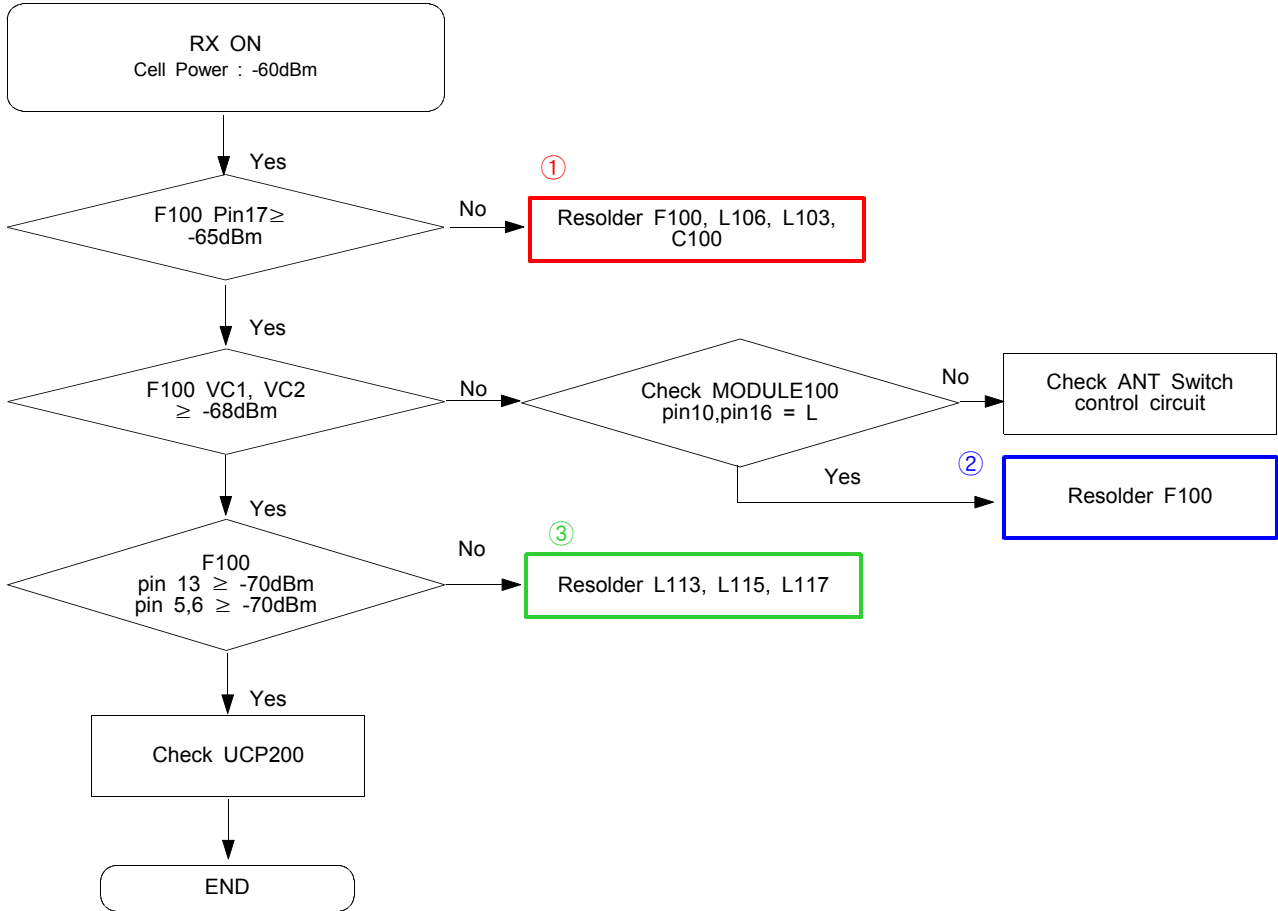


### 9-9. Radio part



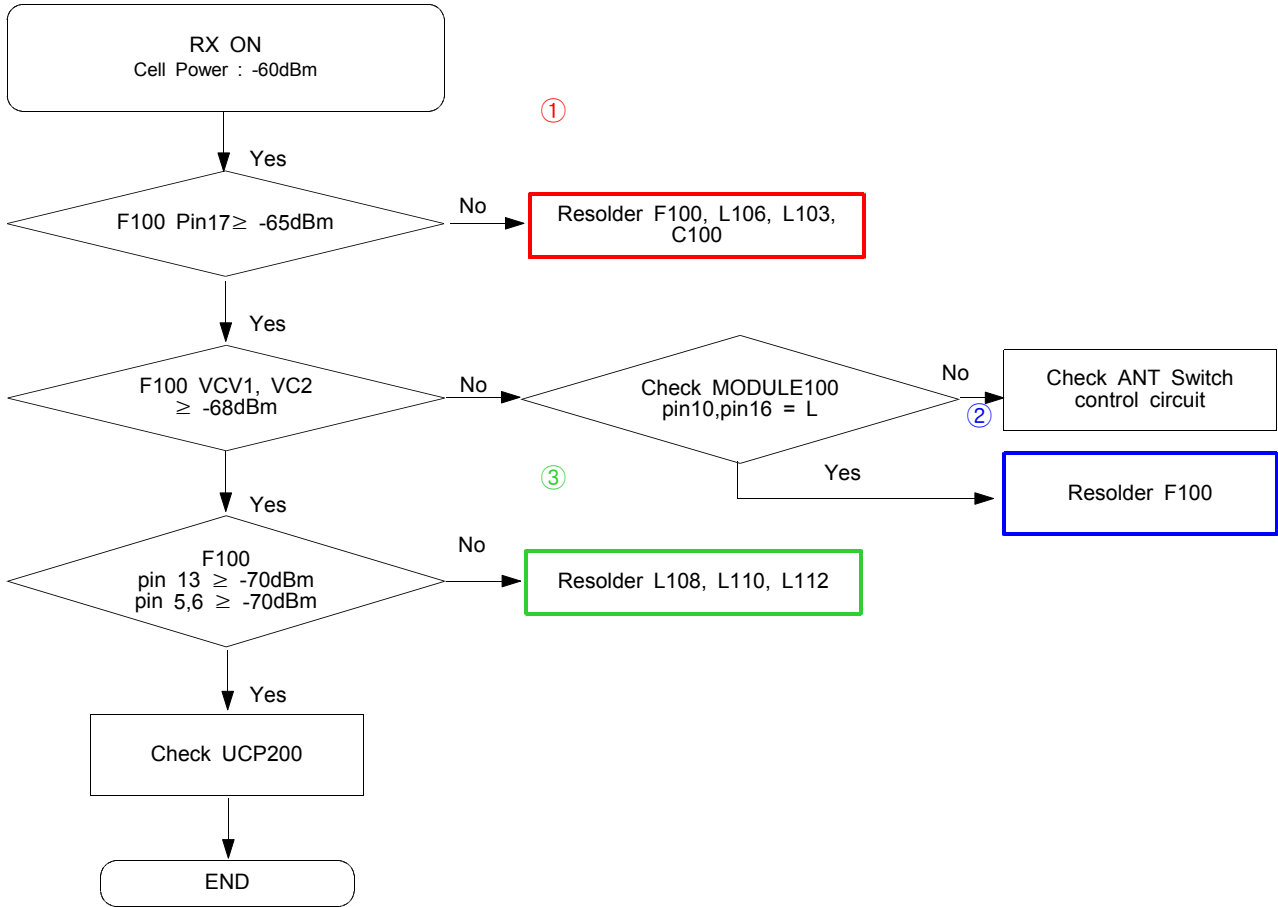
# FM RADIO

### 9-10. GSM Receiver

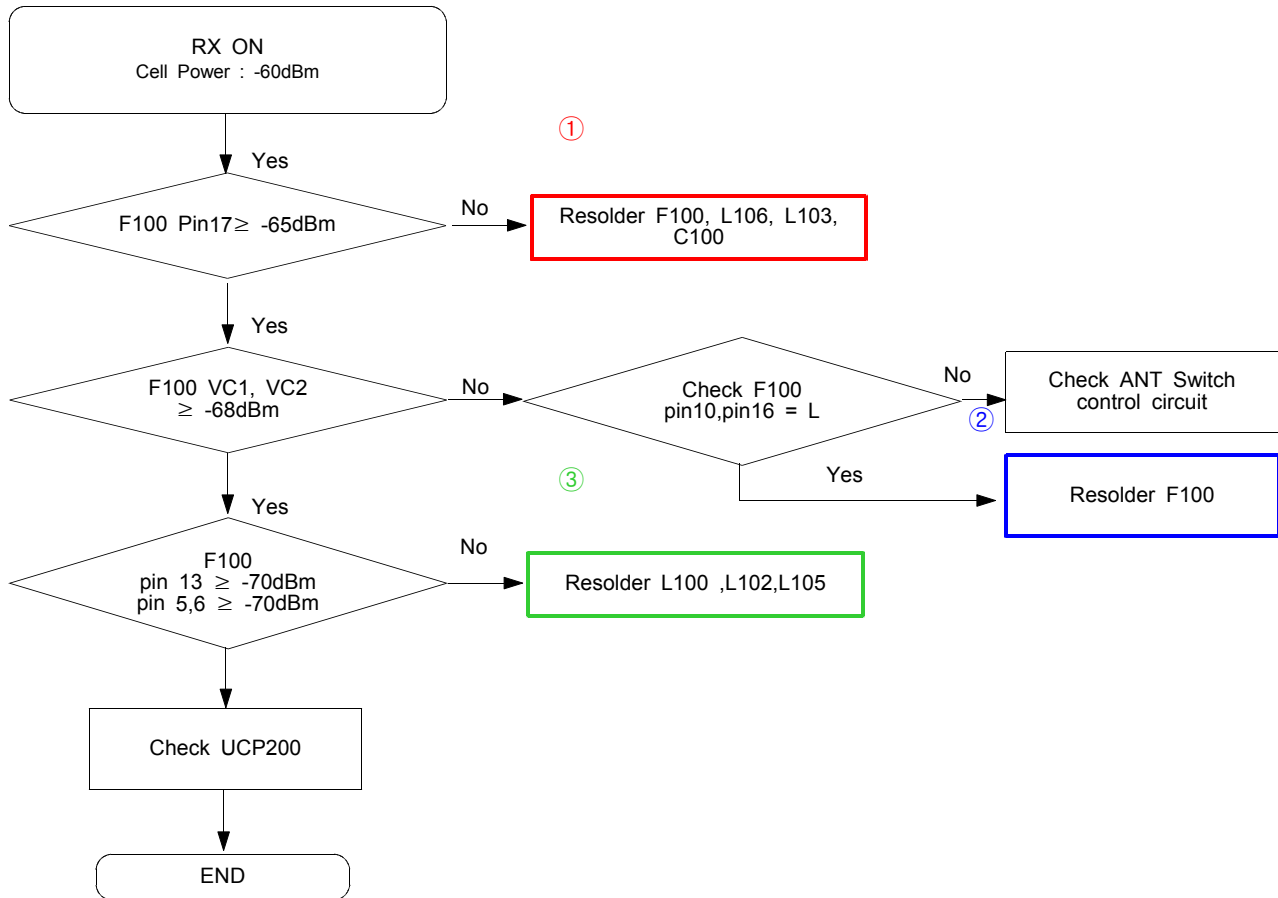




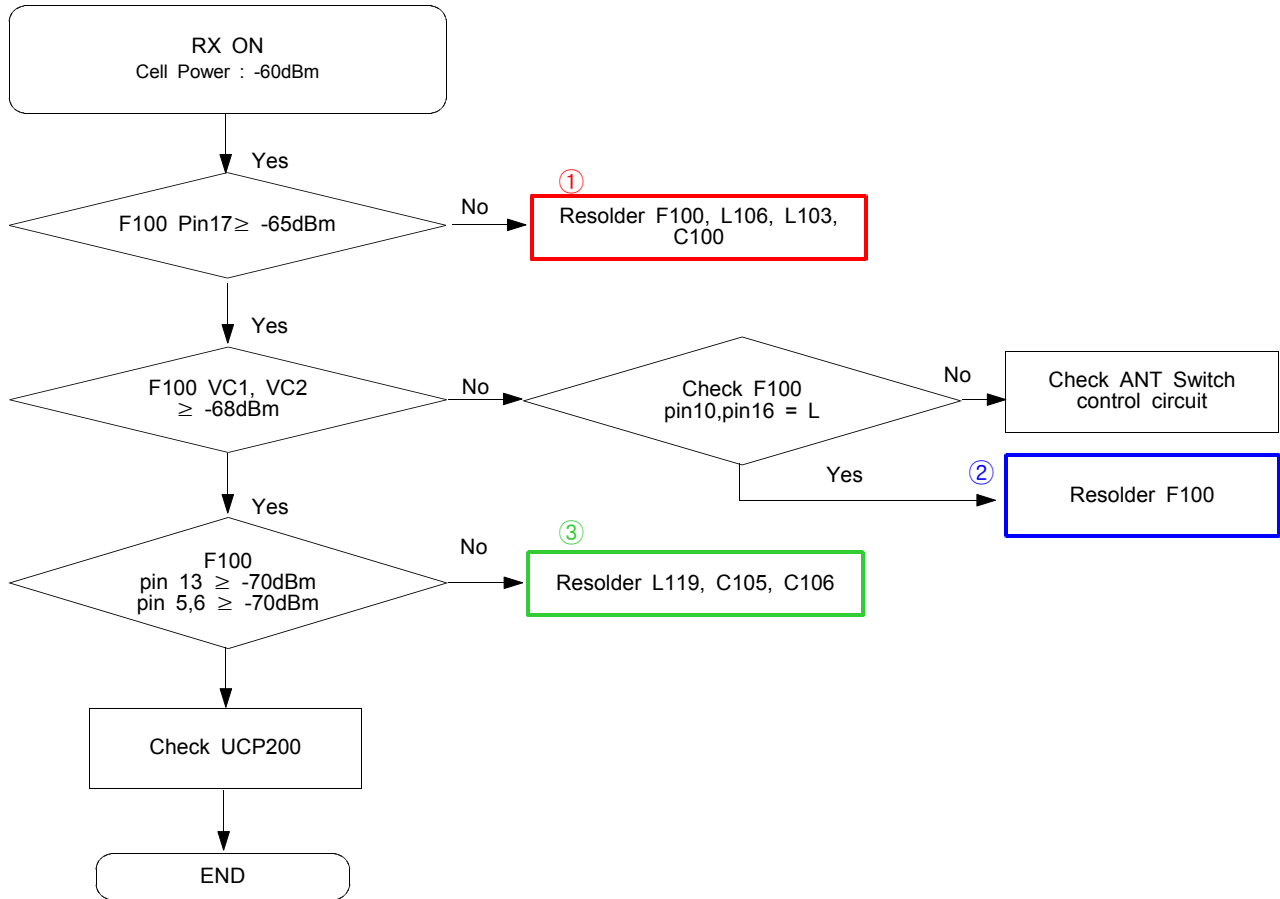
### 9-11. DCS Receiver

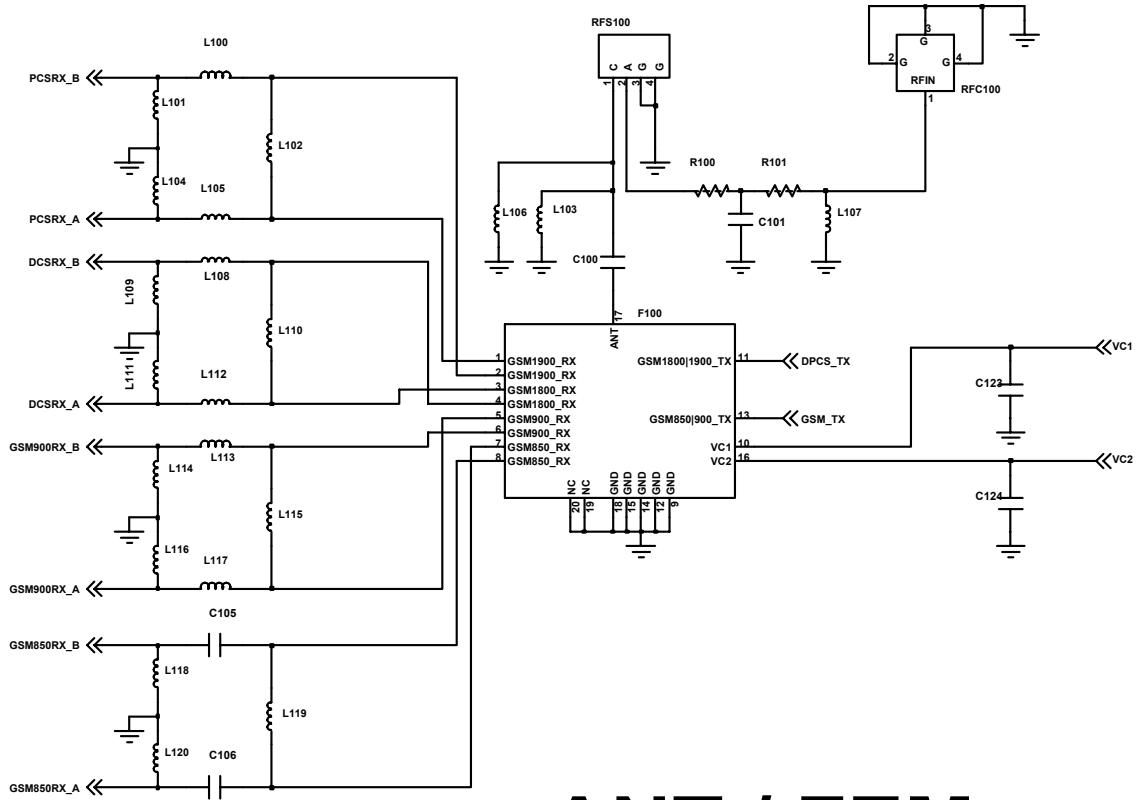


## 9-12. PCS Receiver

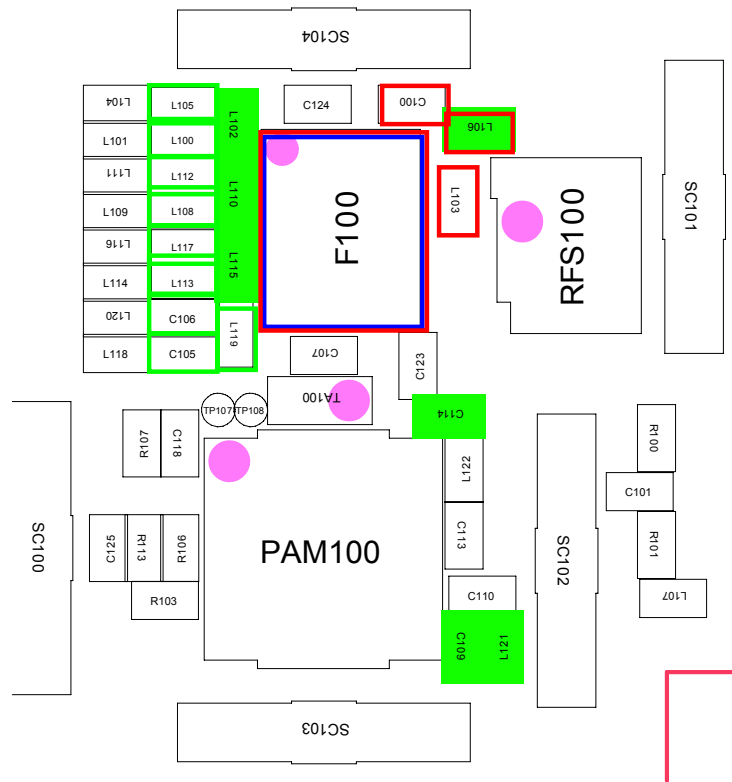


### 9-13. EDGE Receiver

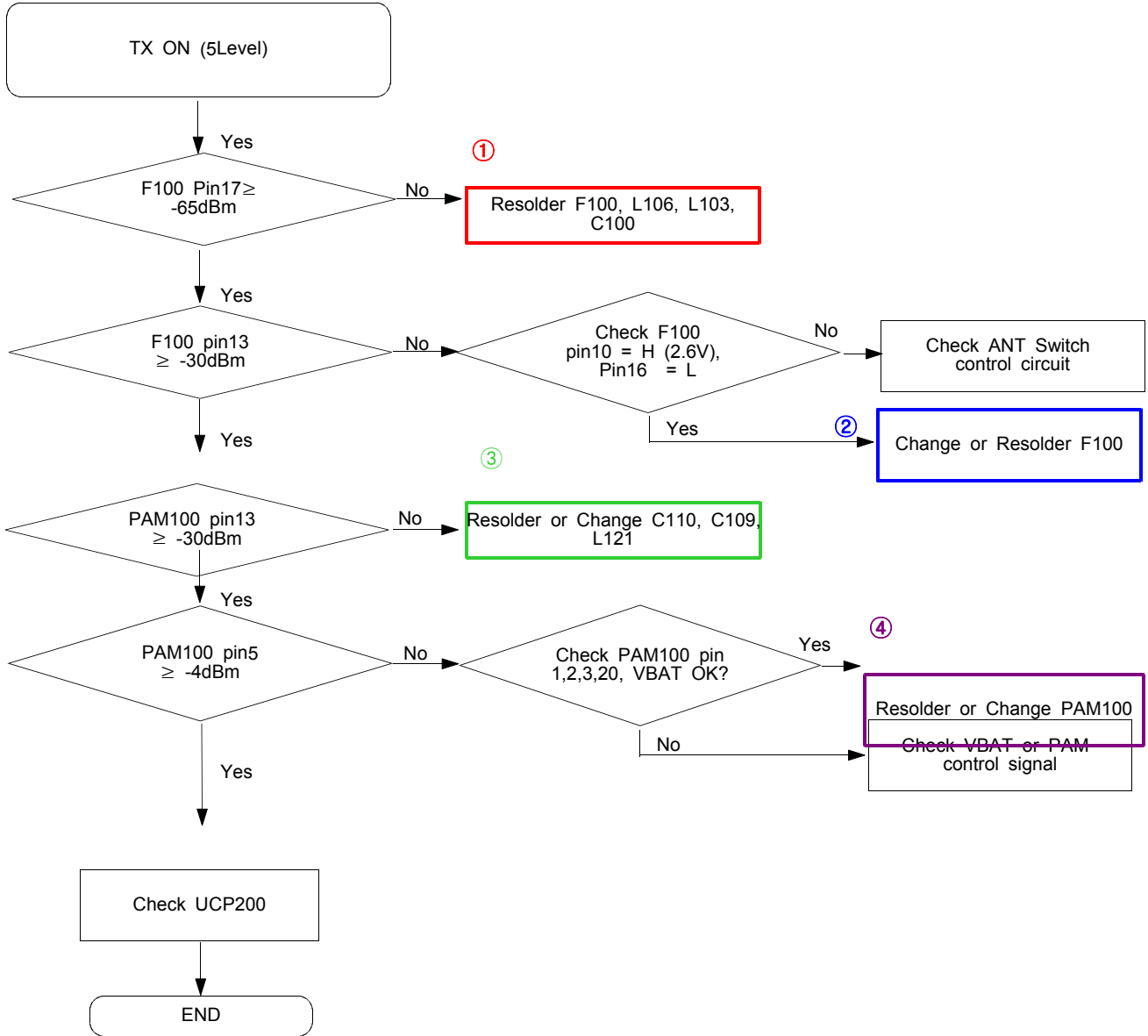




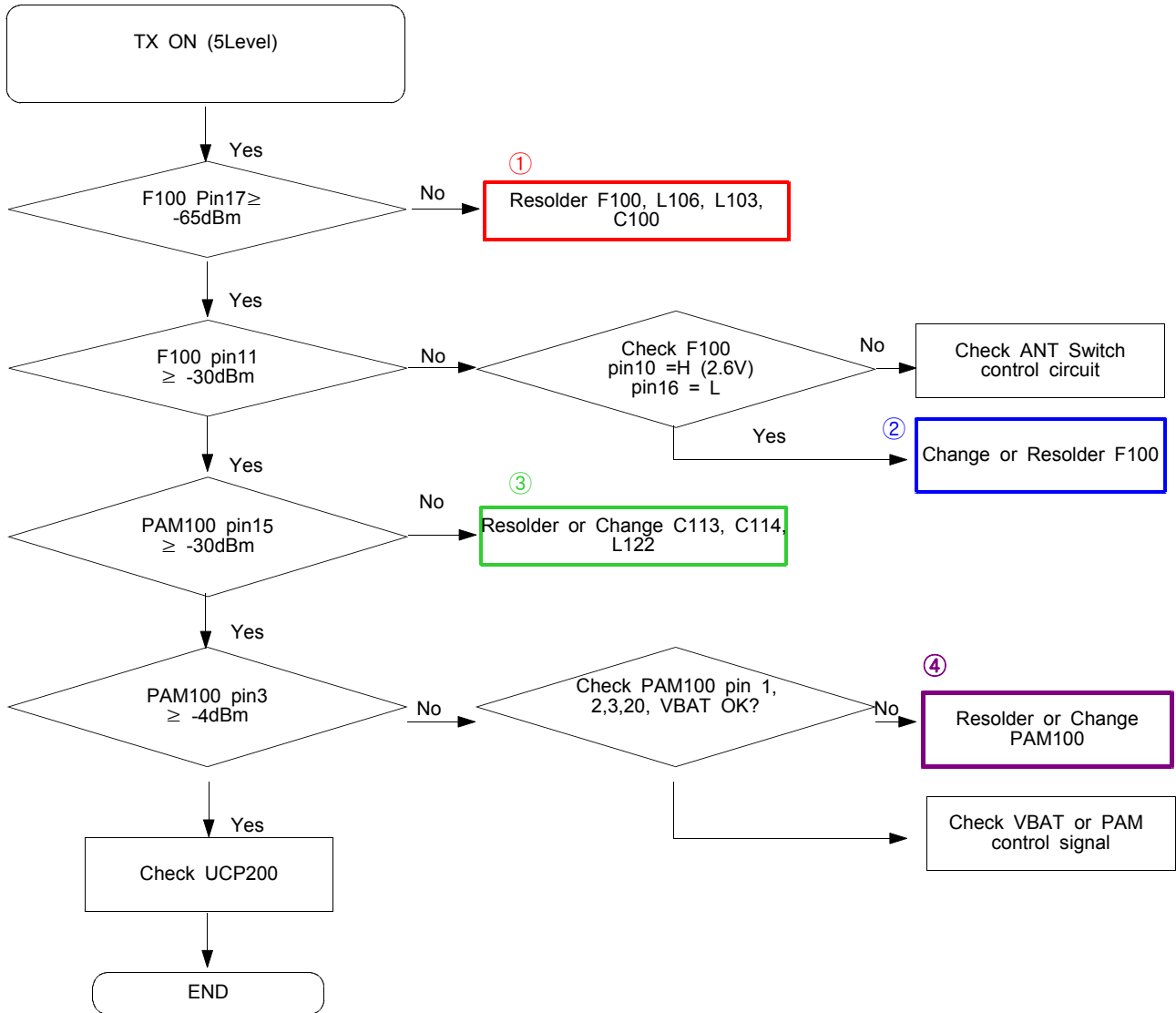
# ANT / FEM



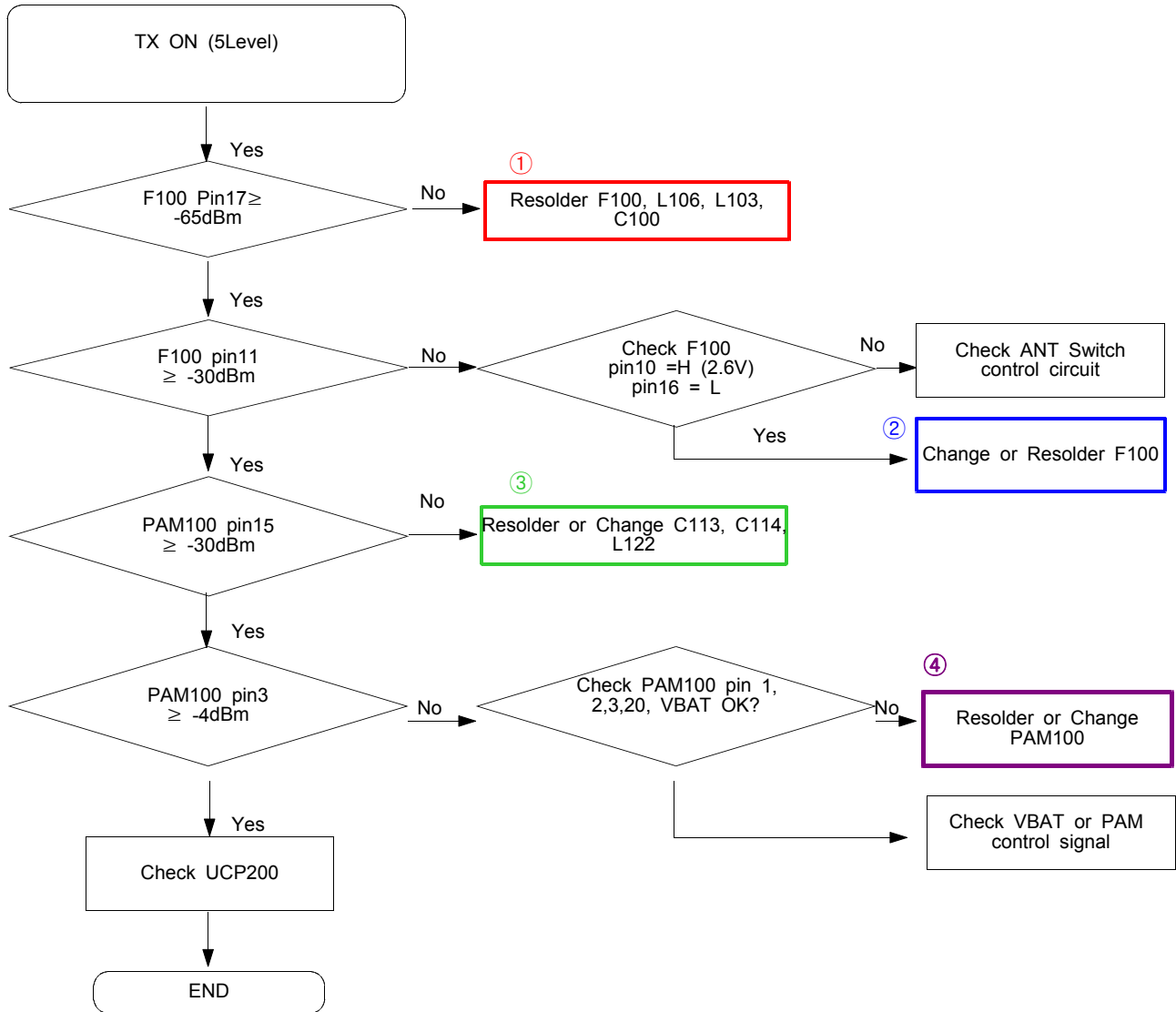
### 9-14. GSM Transmitter



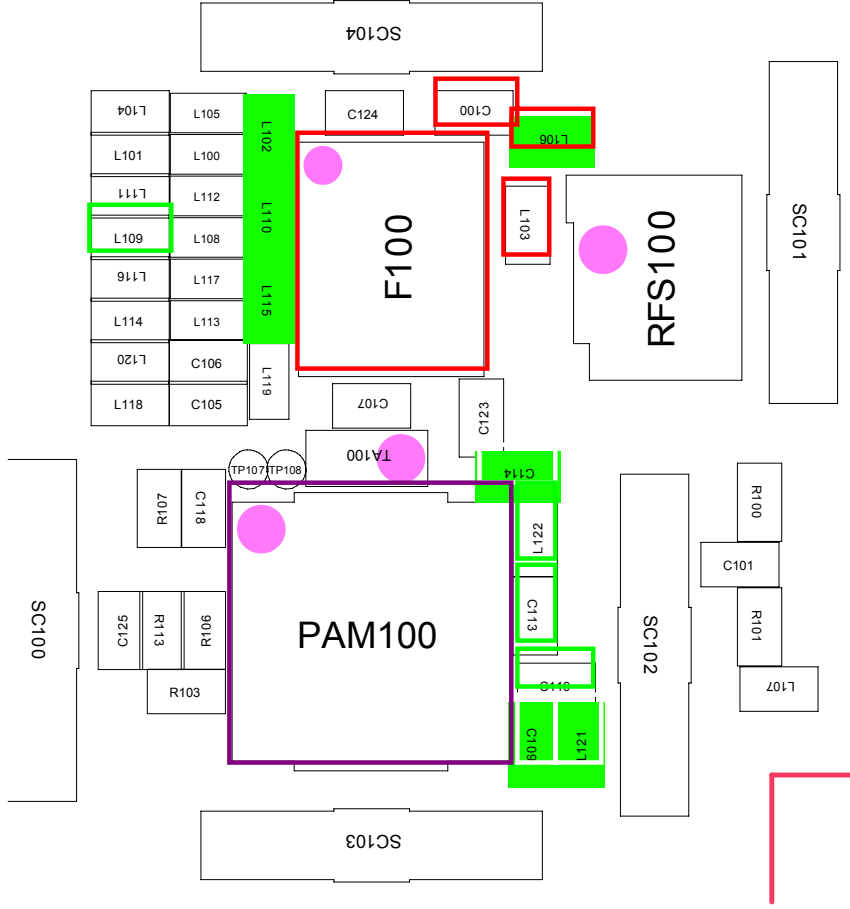
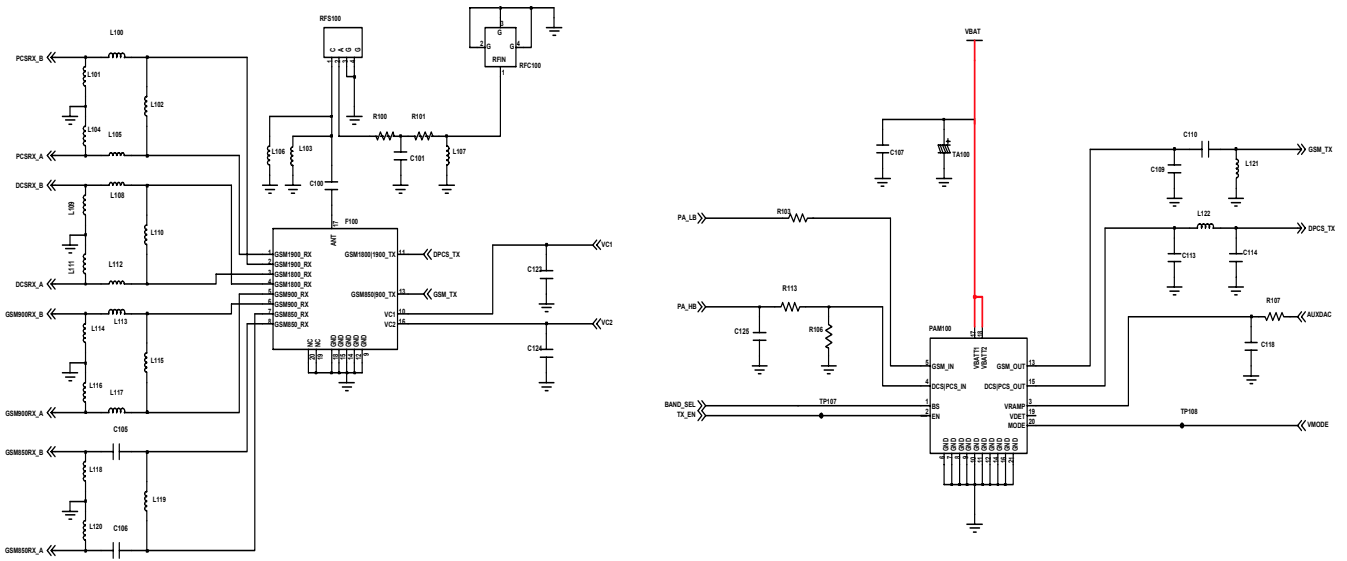
### 9-15. DCS Transmitter



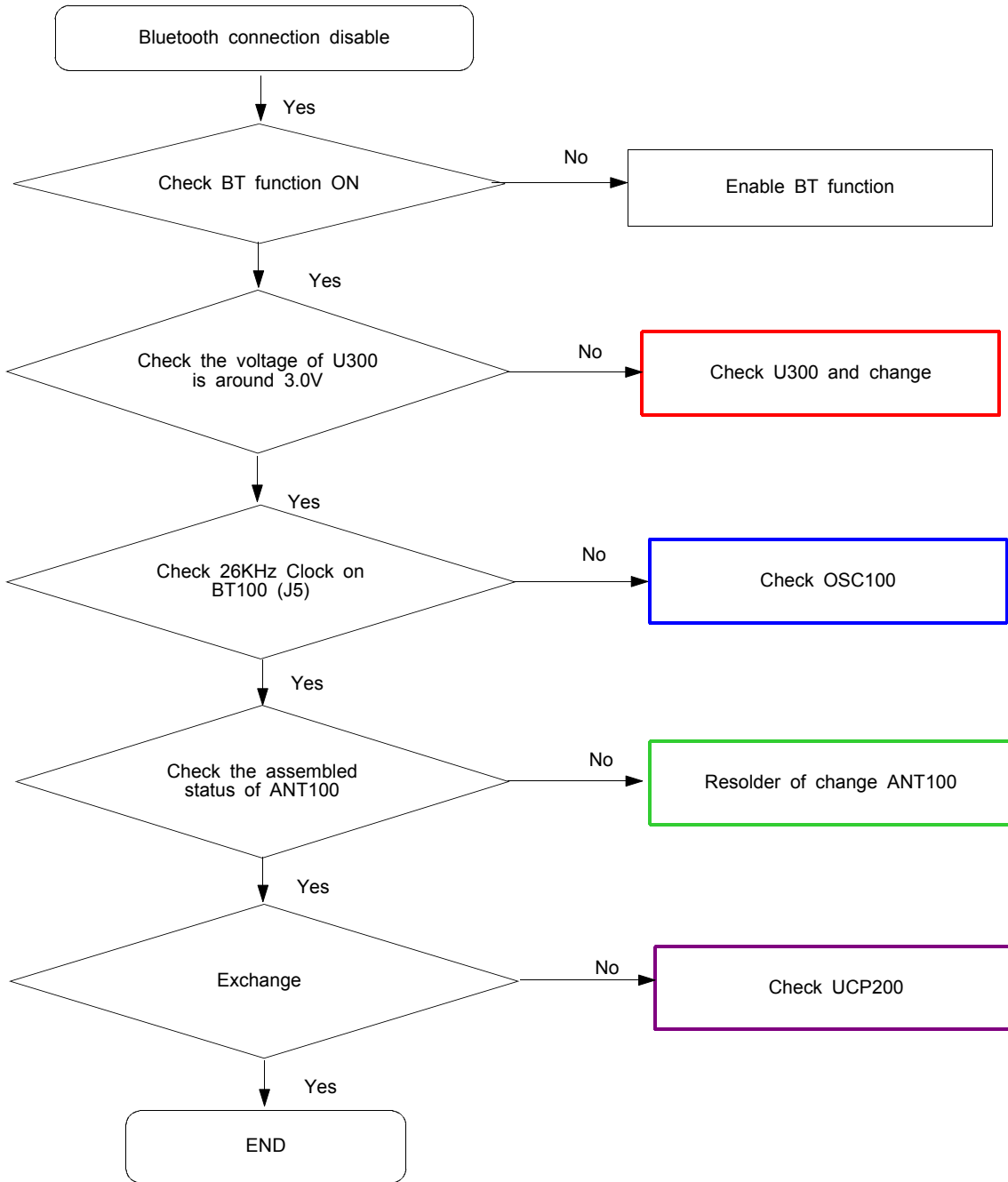
### 9-16 PCS Transmitter

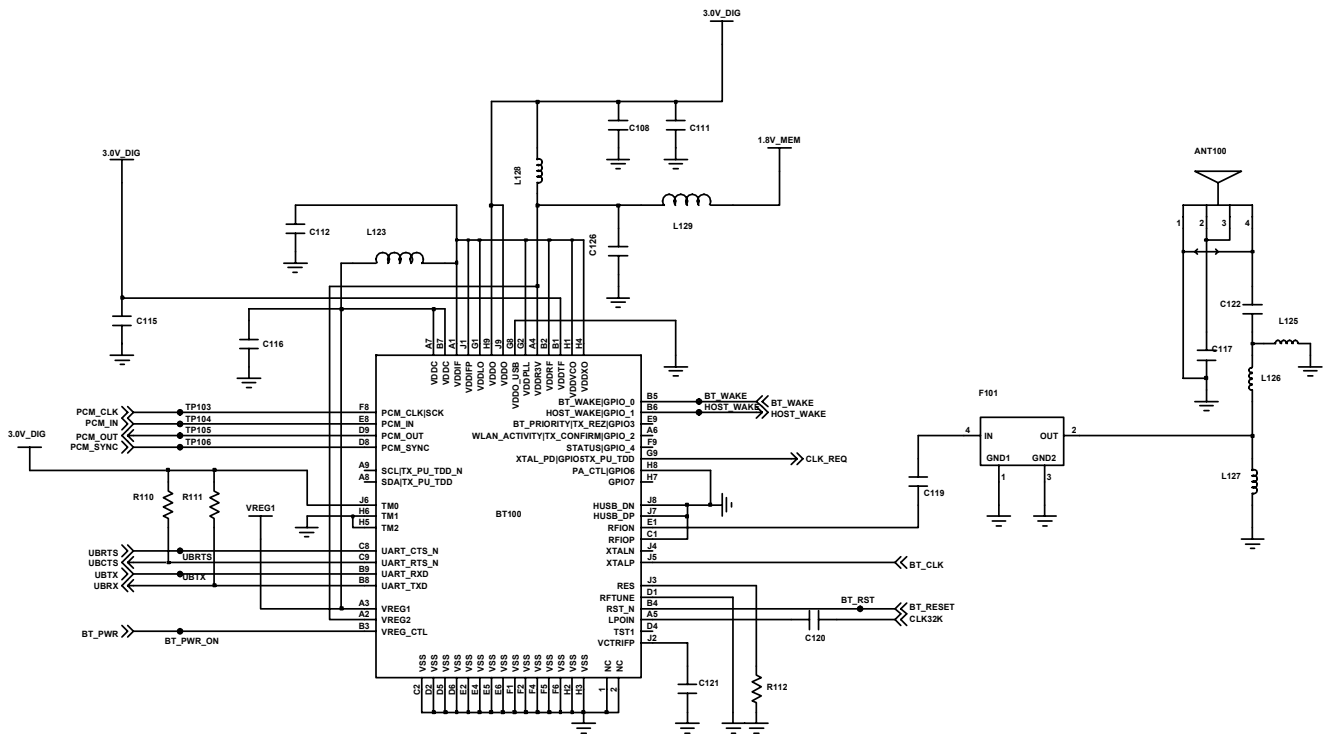
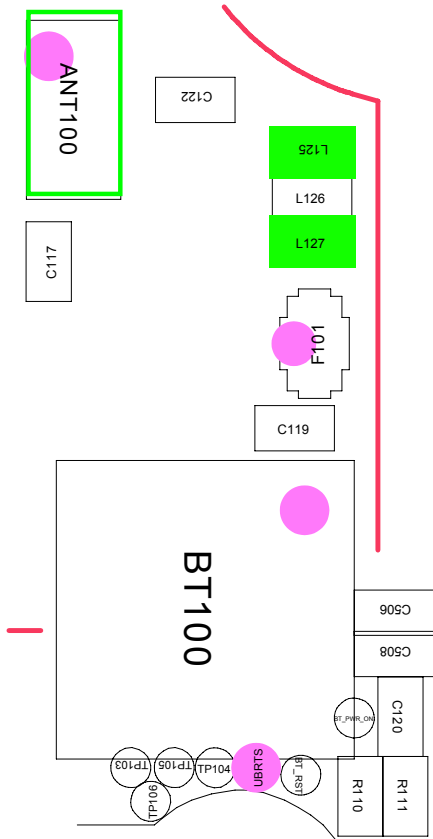






### 9-18 Bluetooth part





## 7. Block Diagrams

### 1. BB & RF PART (ONE CHIP MODULE)

