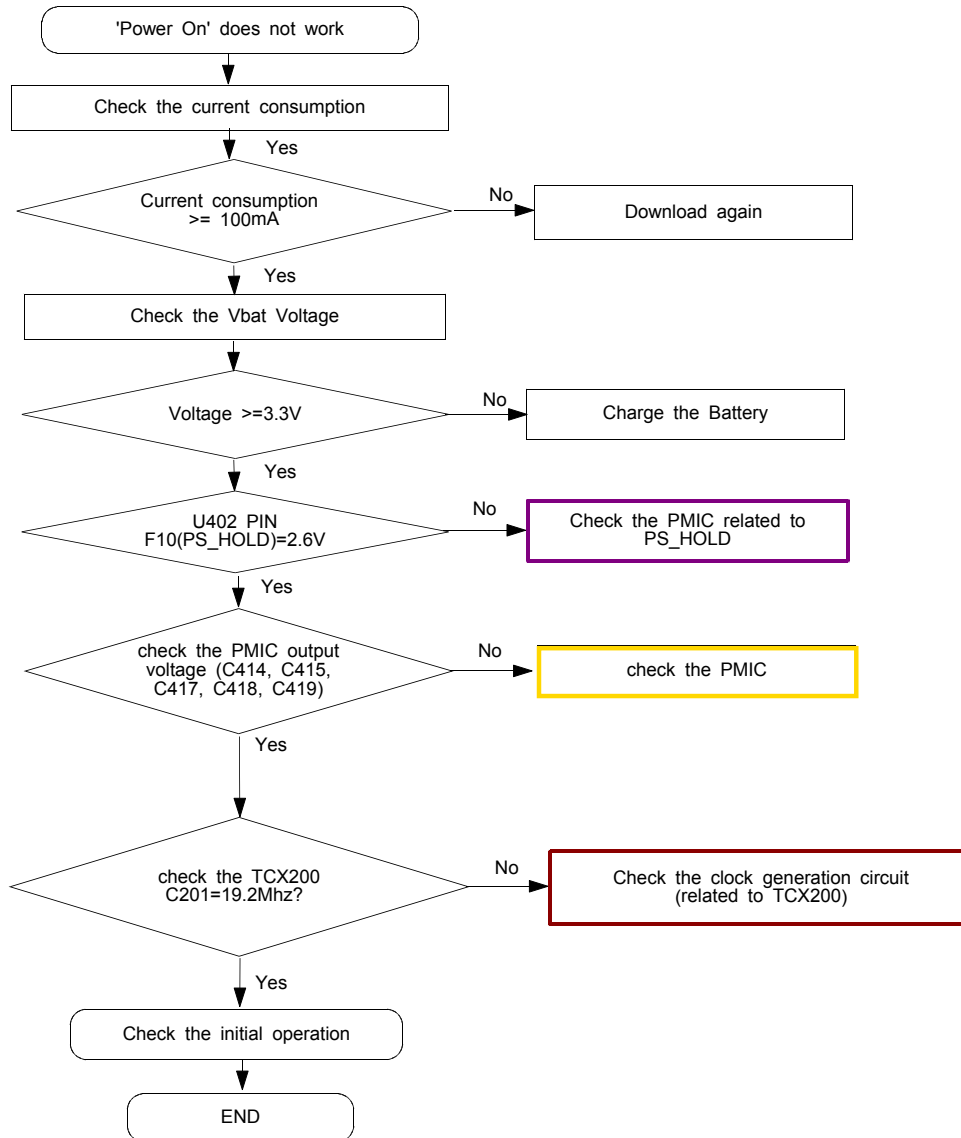
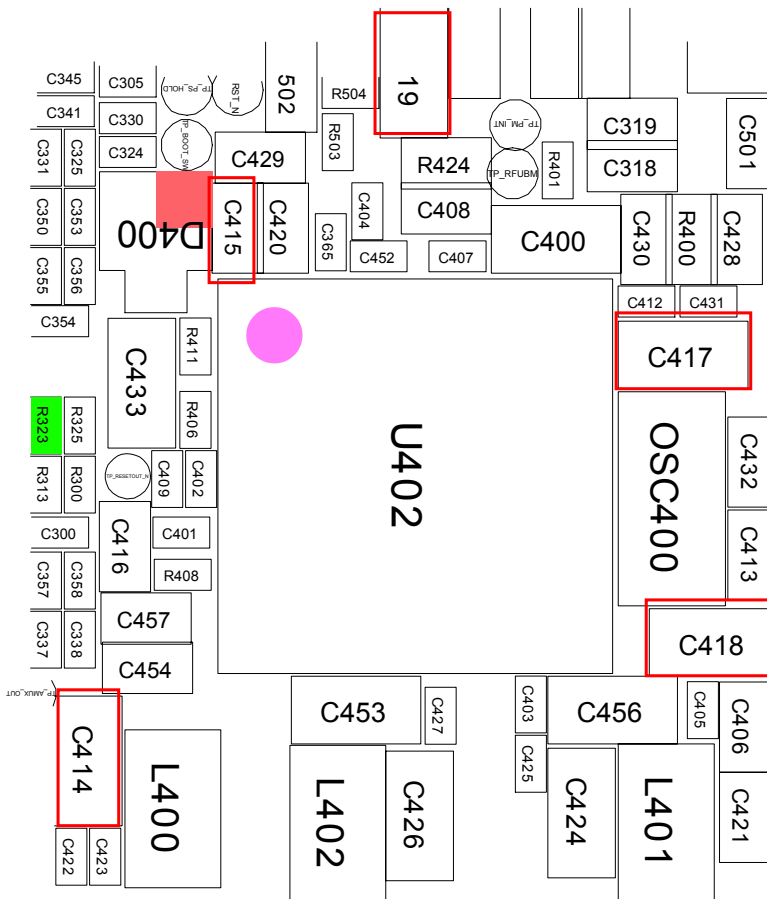
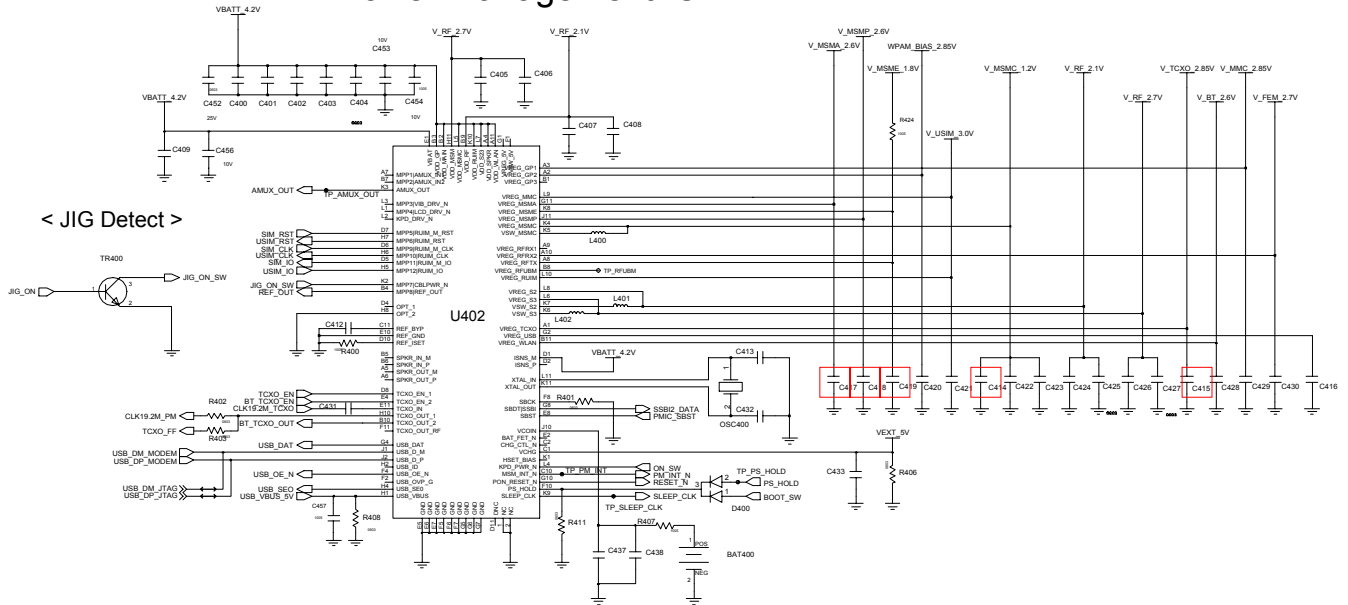

10. Flow Chart of Troubleshooting

10-1 BASEBAND

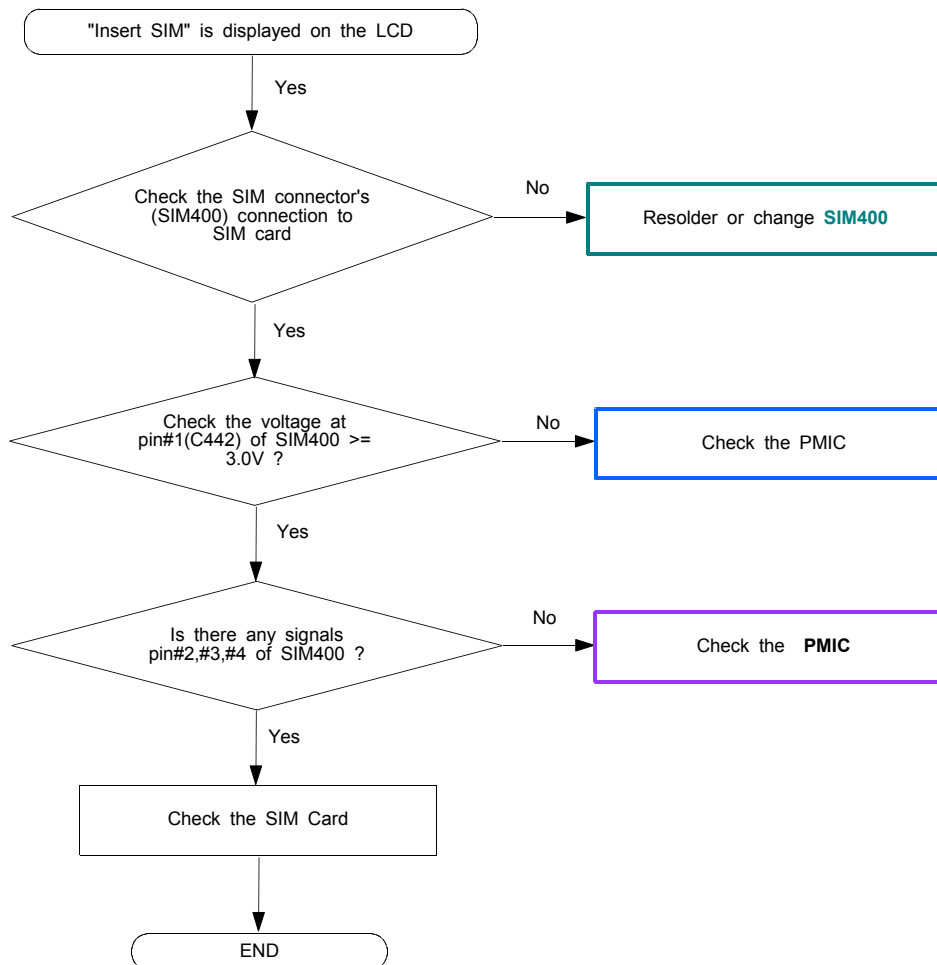
10-1-1. Power ON



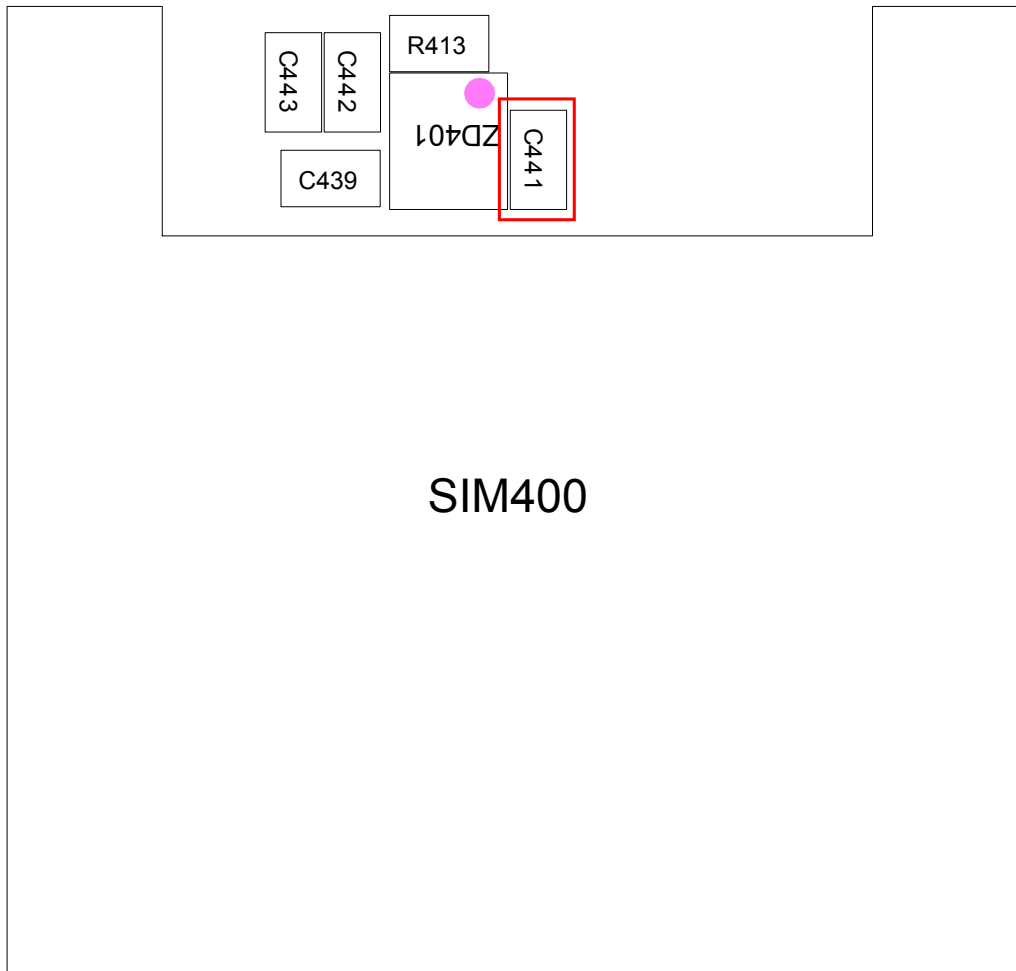
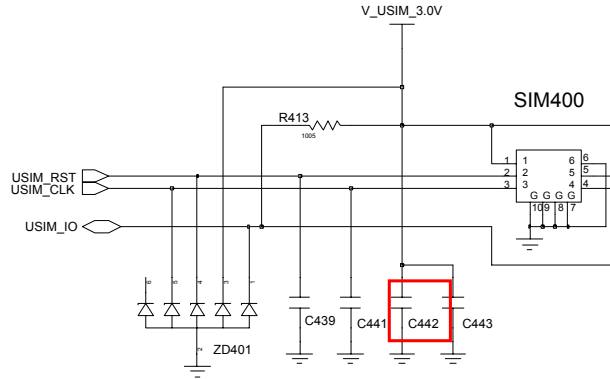
< Power Management IC >



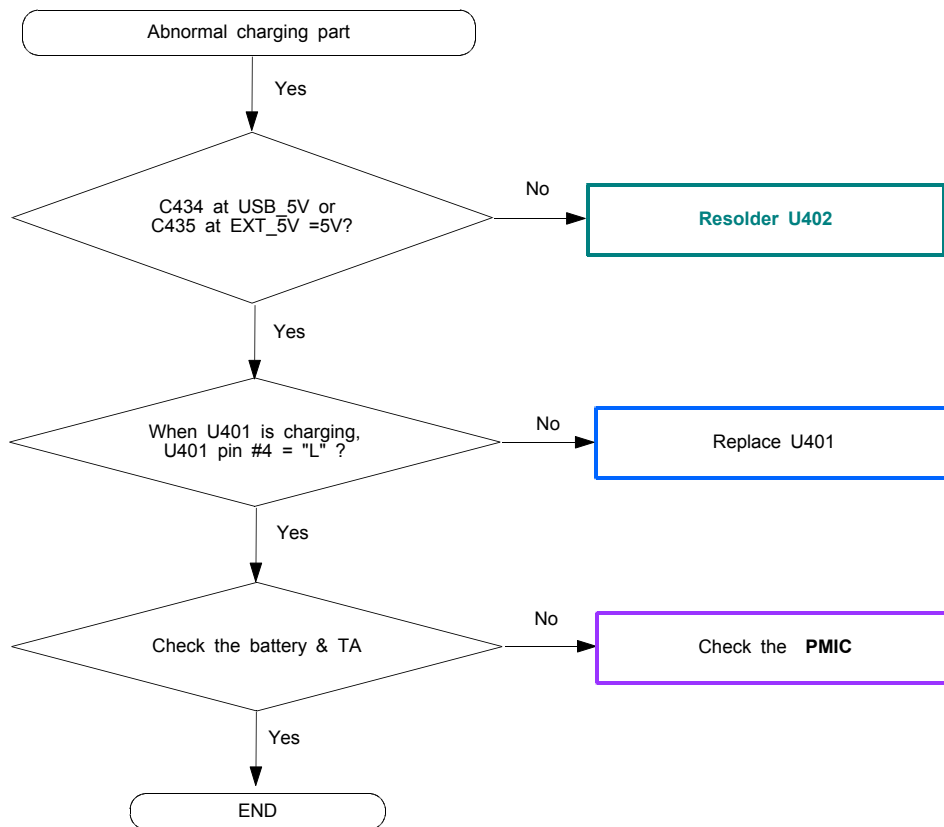
10-1-2. Sim Part



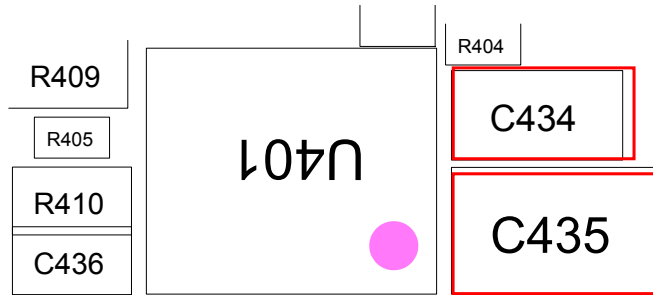
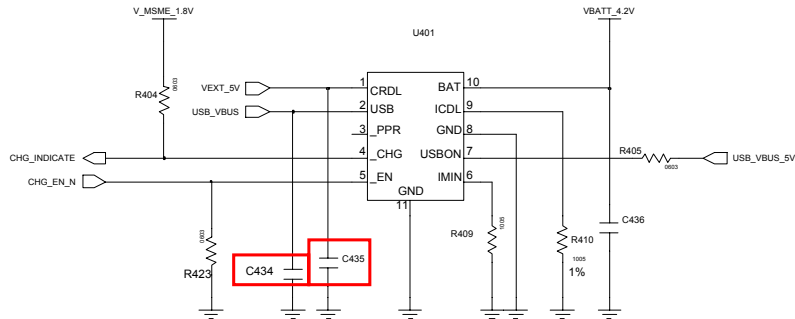
< USIM Connector >



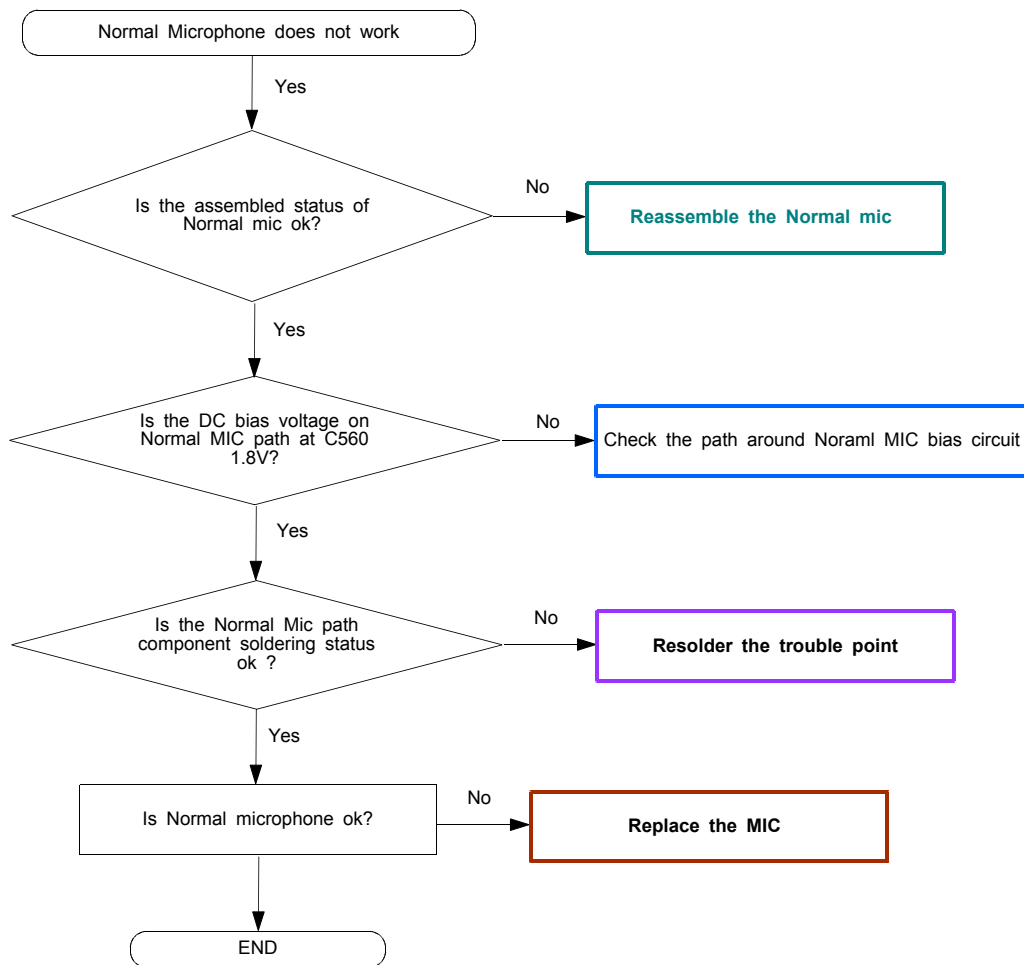
10-1-3. Charging Part

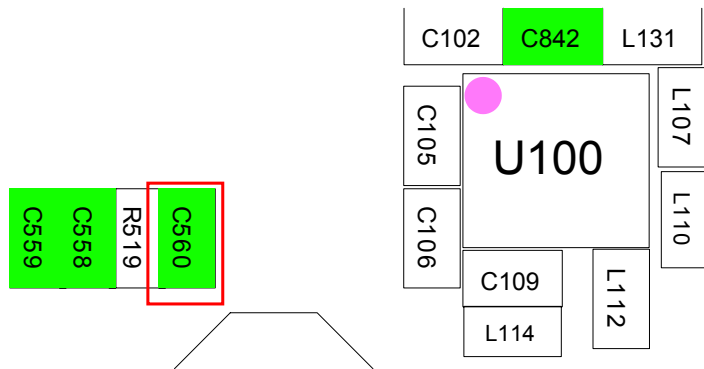
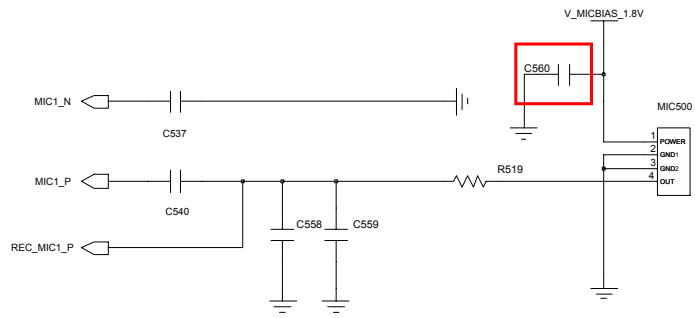


< Charging IC >

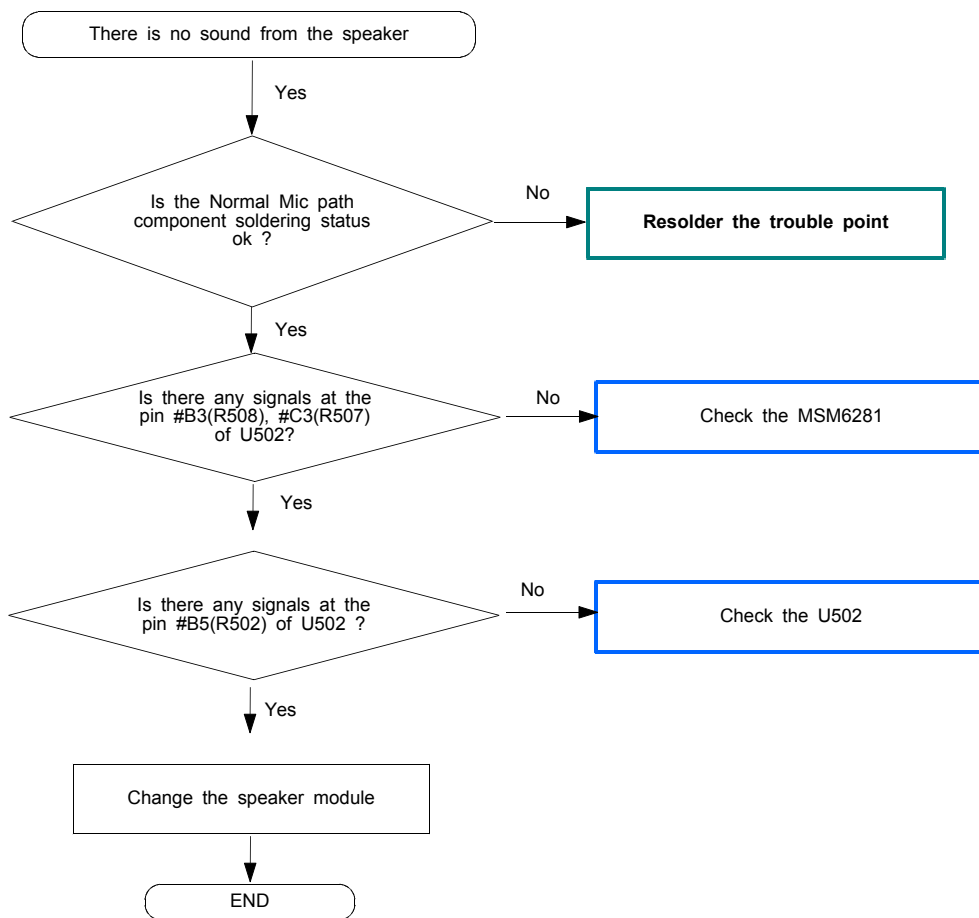


10-1-4. Microphone Part - PHONE Mic

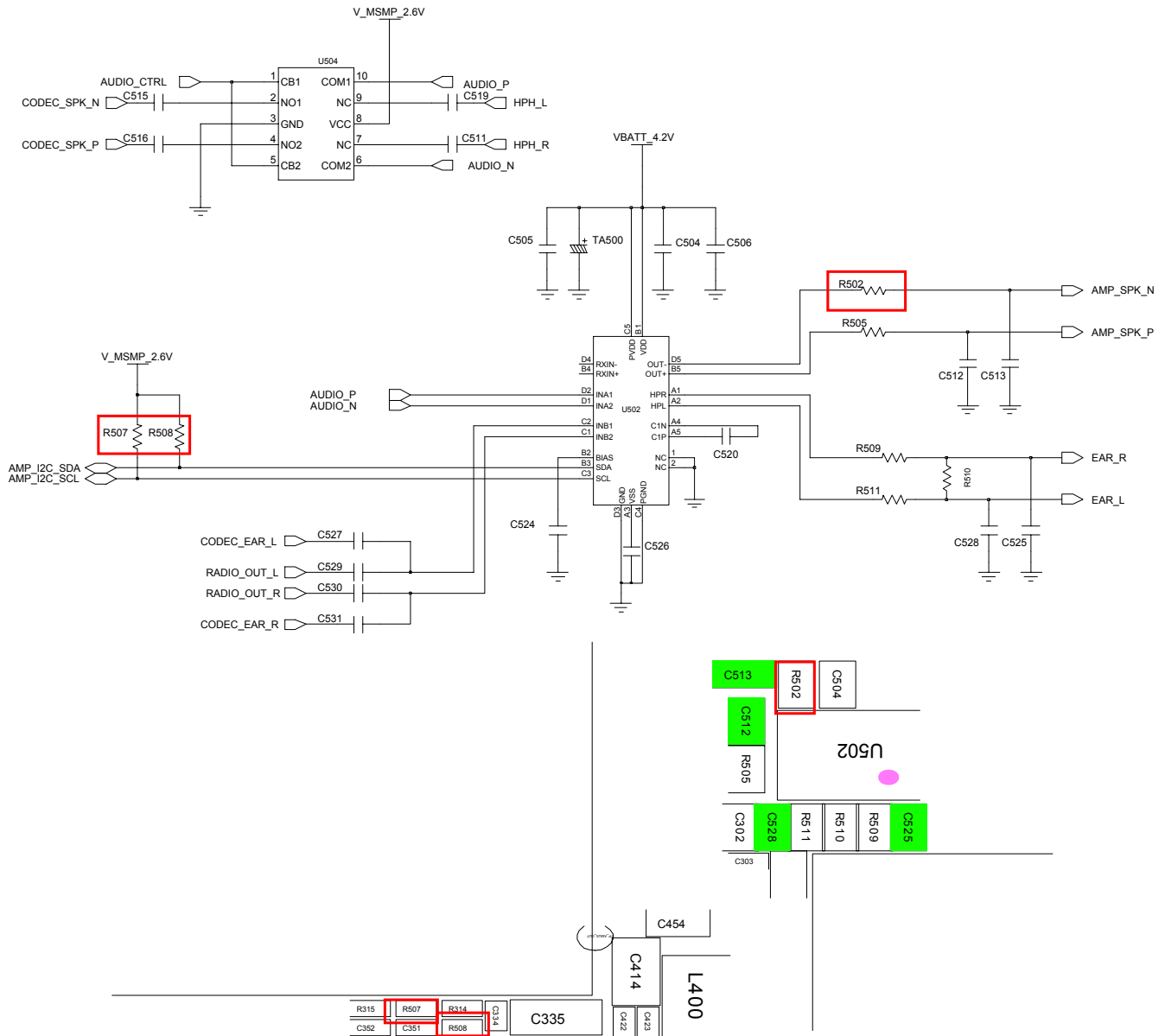




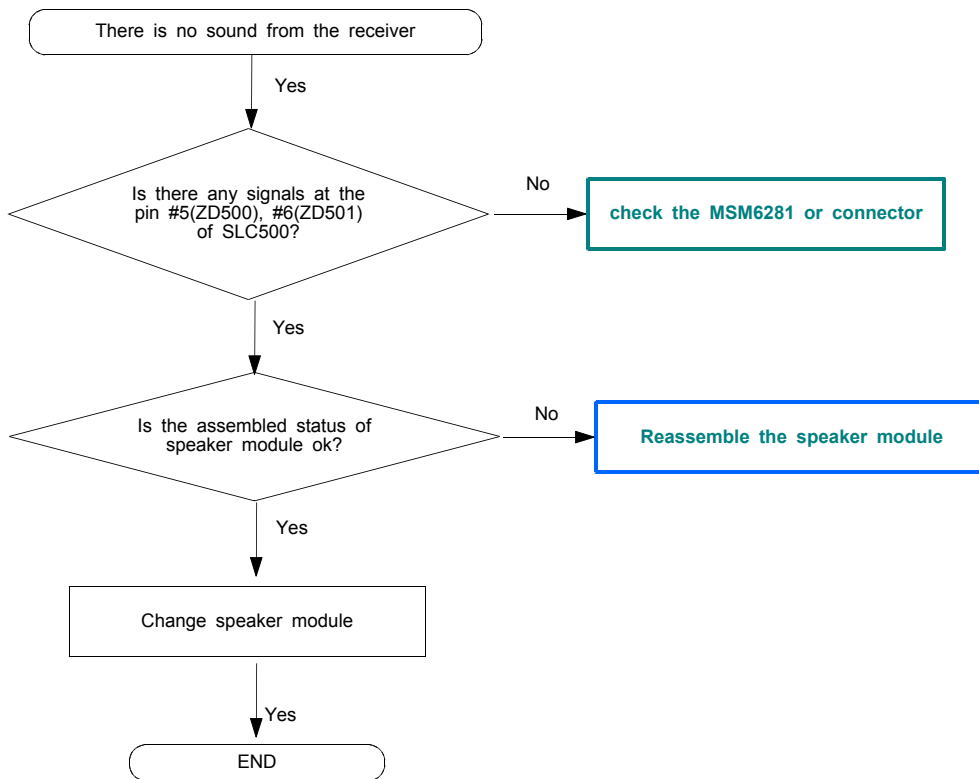
10-1-5. Speaker part



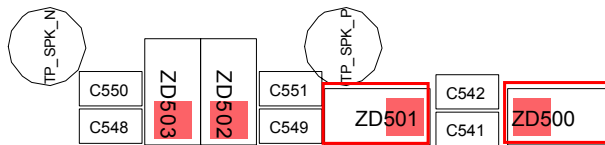
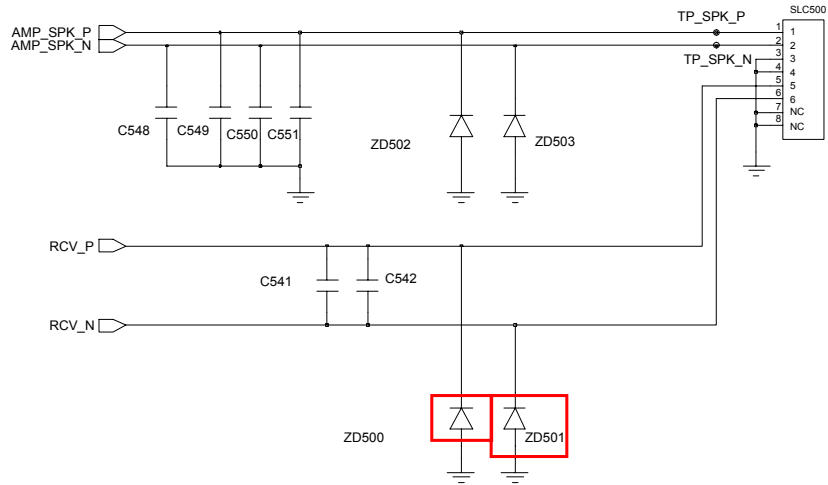
< Mono Class-D AMP >



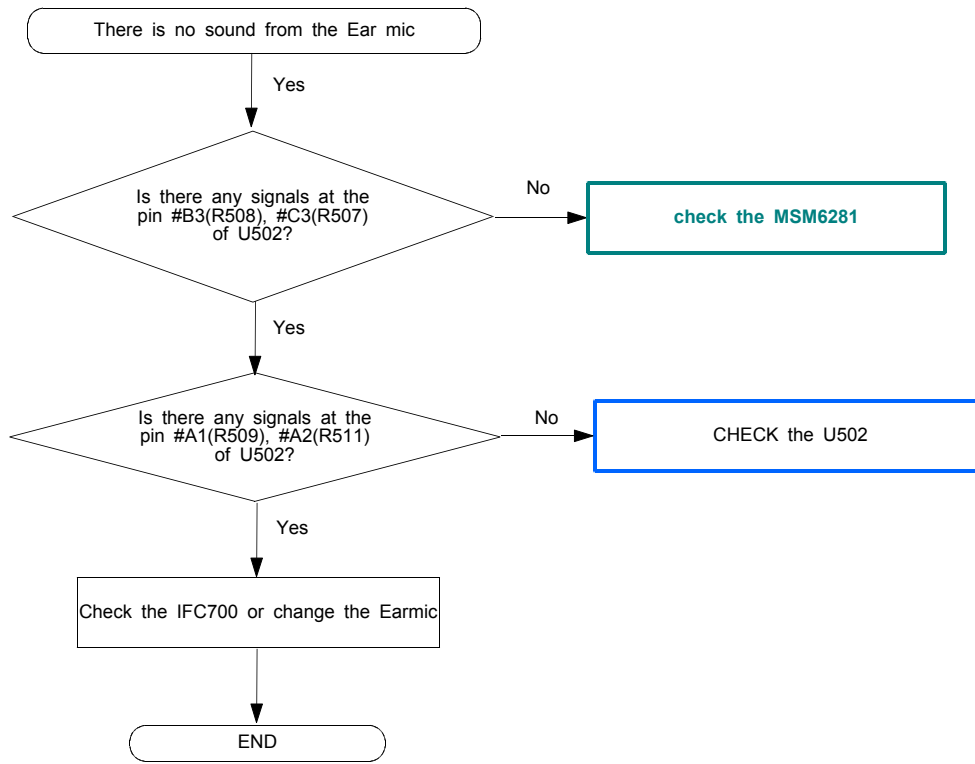
10-1-6. Receiver part



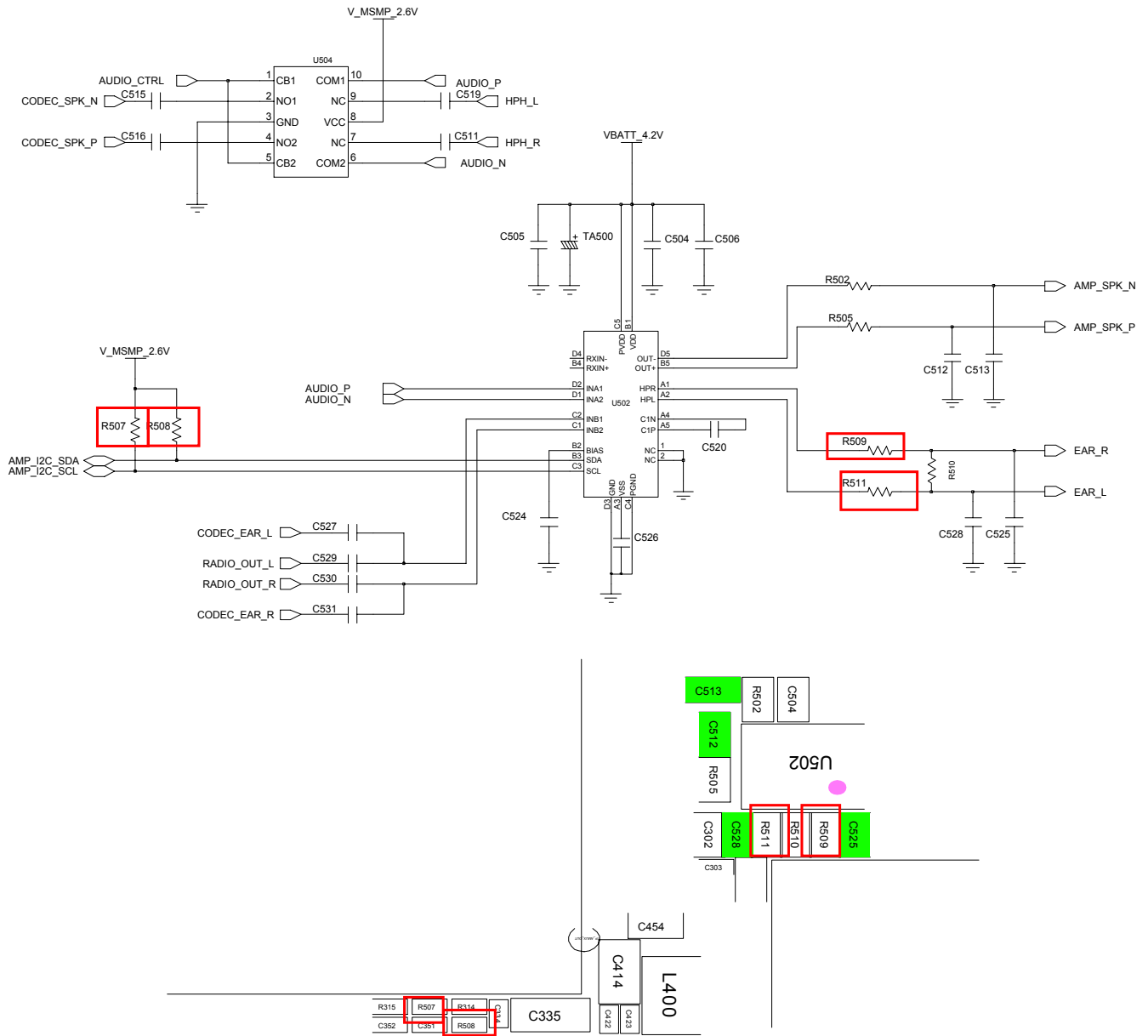
< Speaker / Receiver CON >



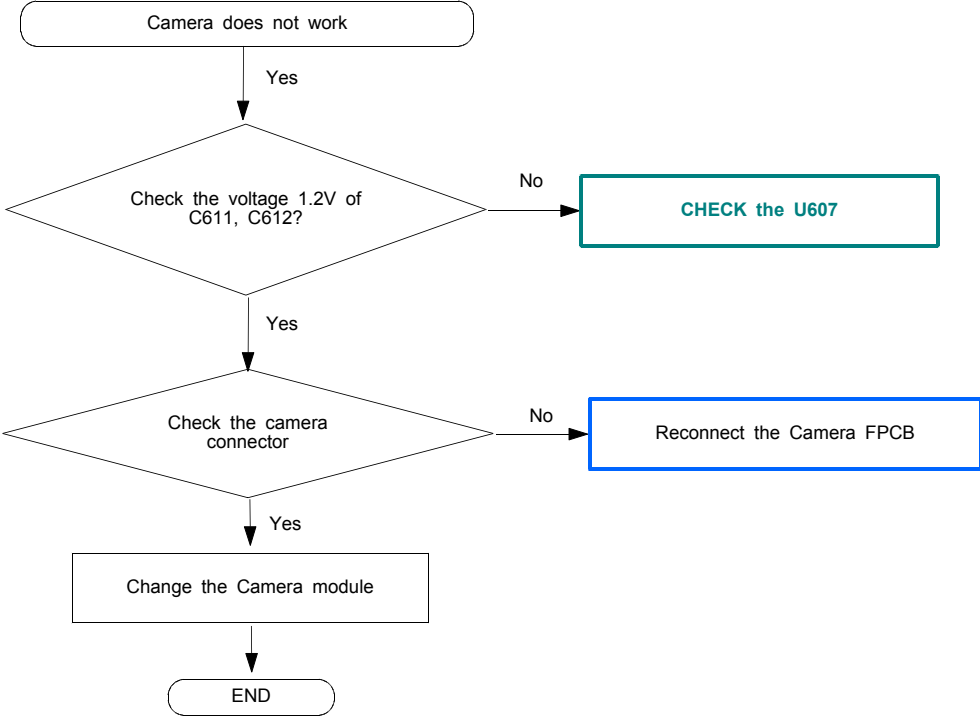
10-1-7. Ear mic Part - MIC CABLE



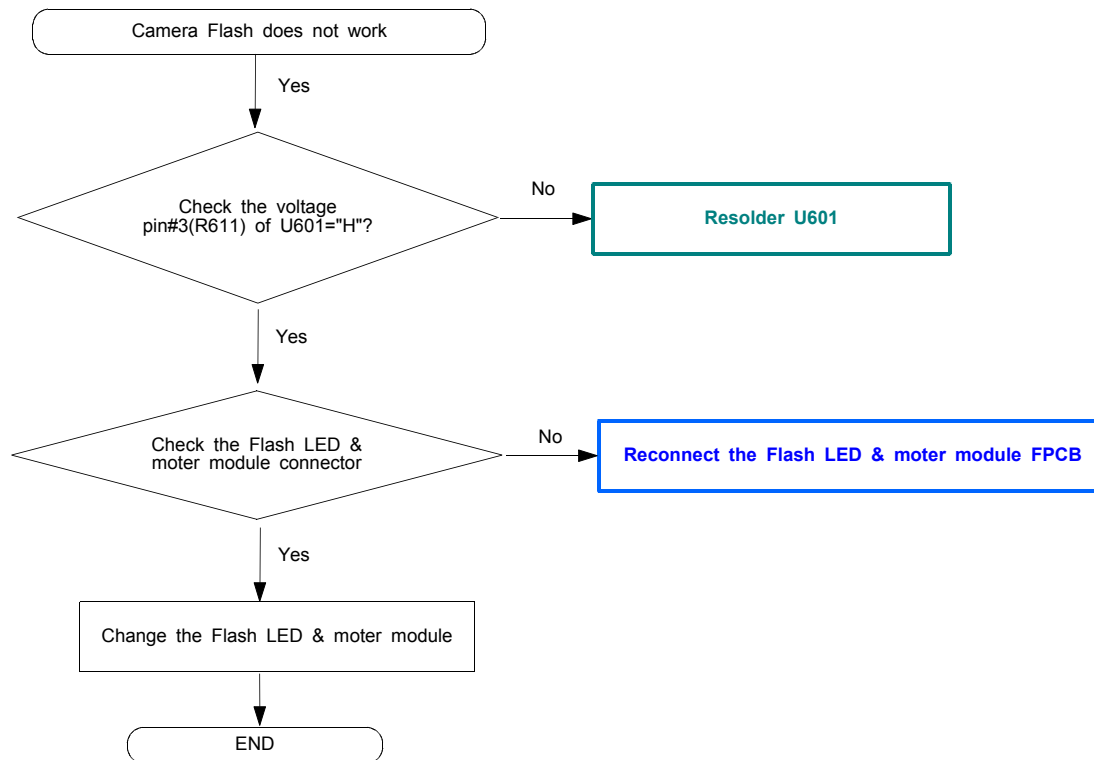
< Mono Class-D AMP >



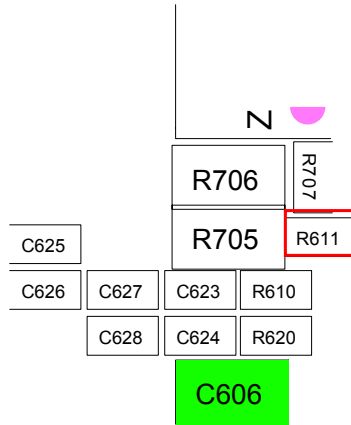
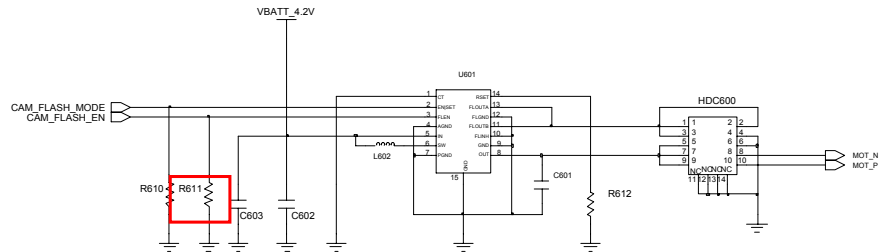
10-1-8-1. Camera



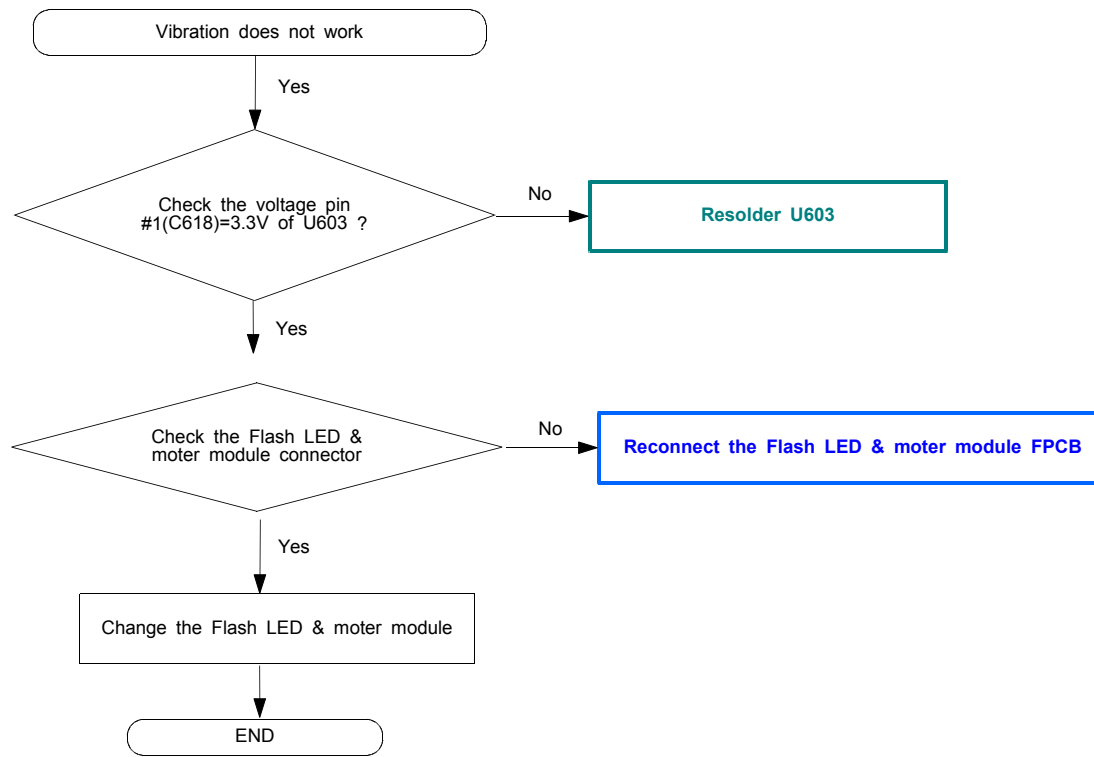
10-1-8-2. Camera Flash



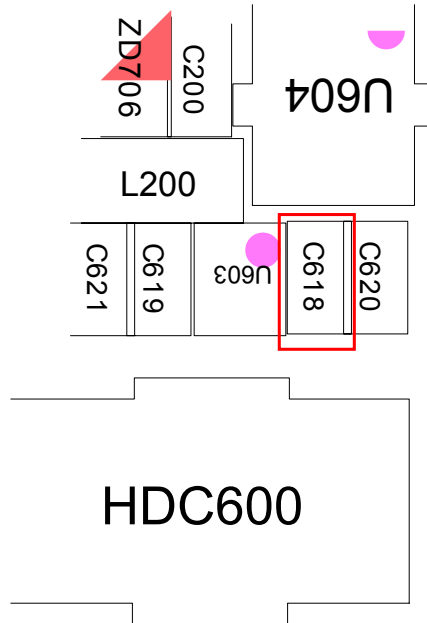
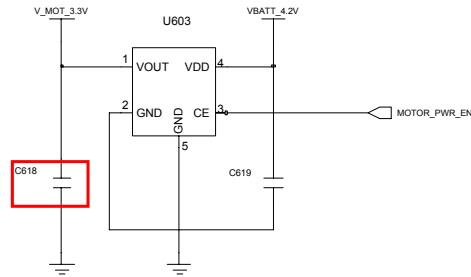
< CAM FLASH LED DRIVER >



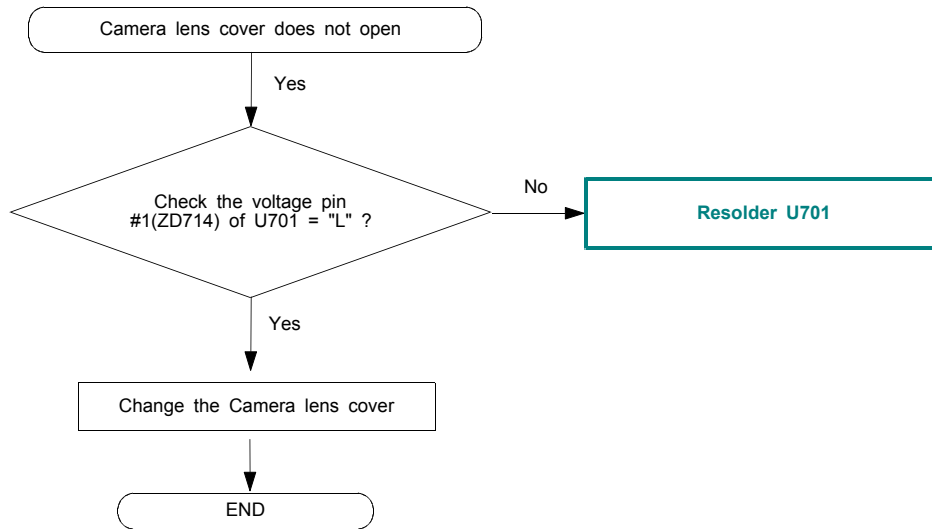
10-1-8-3. Vibration



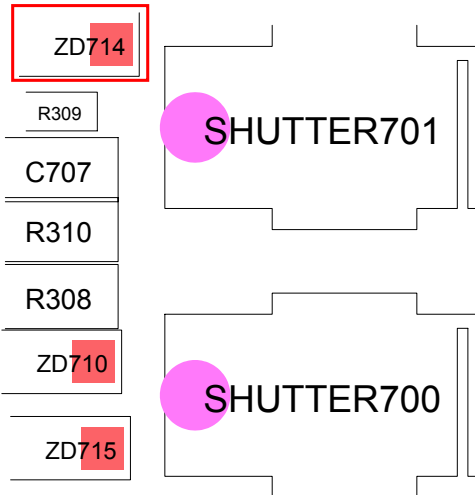
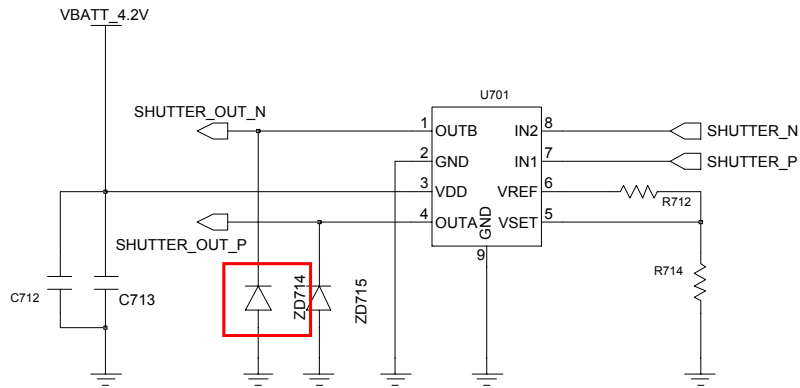
< Motor Power - 3.3V >



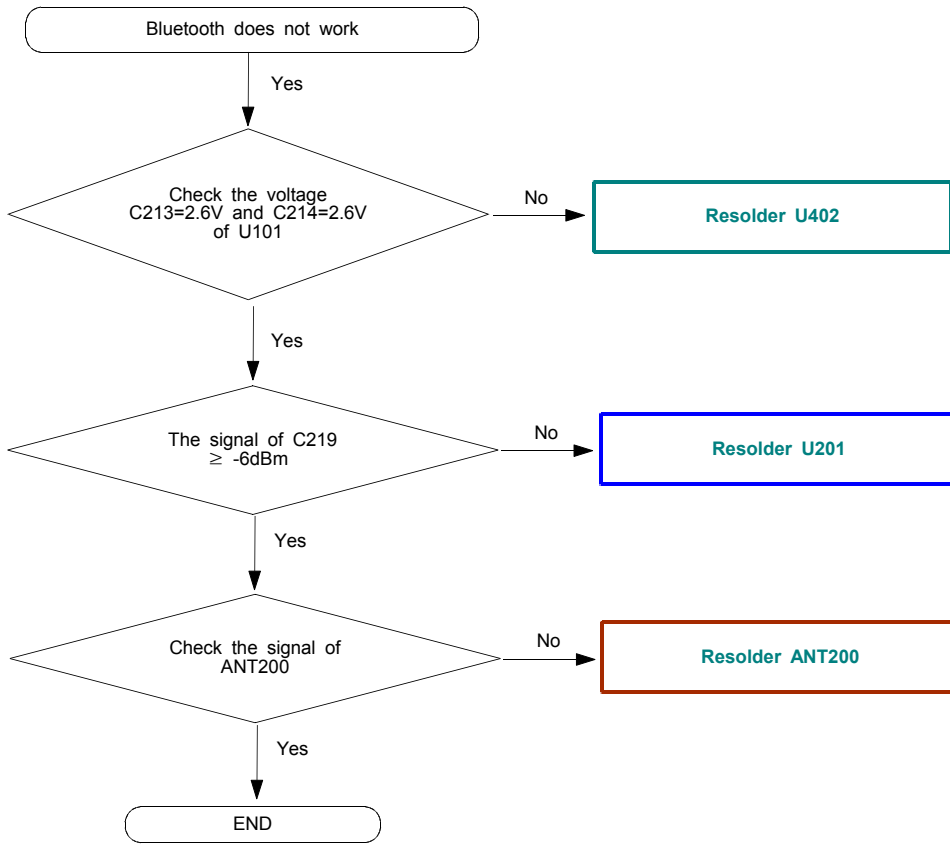
10-1-8-3. Camera Lens Cover



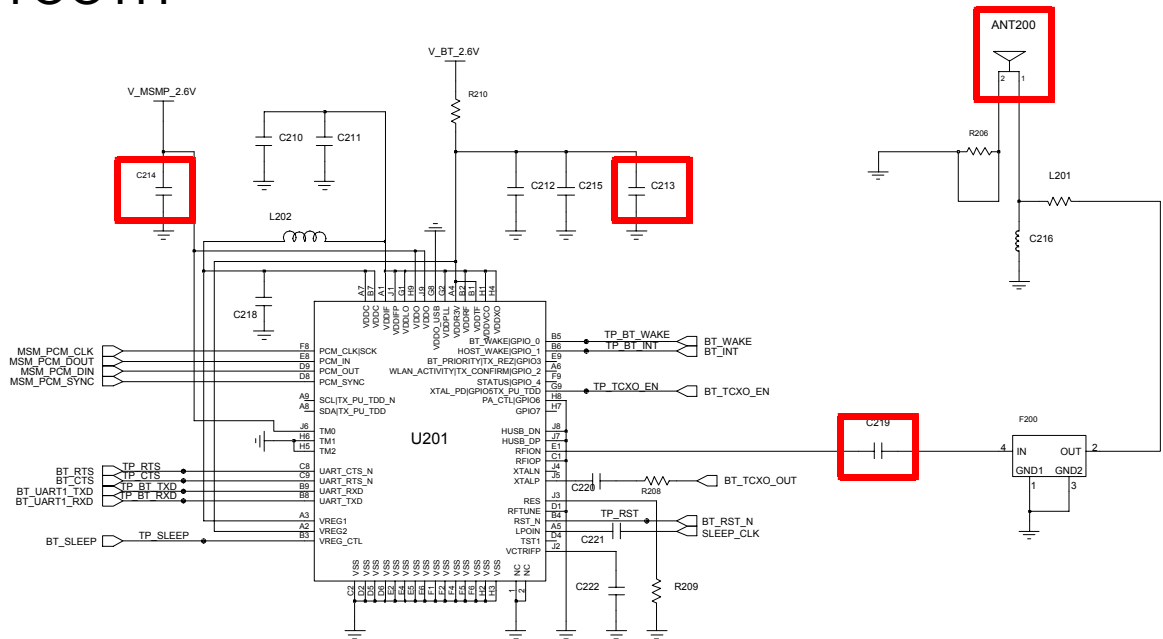
< Camera Lens Cover >

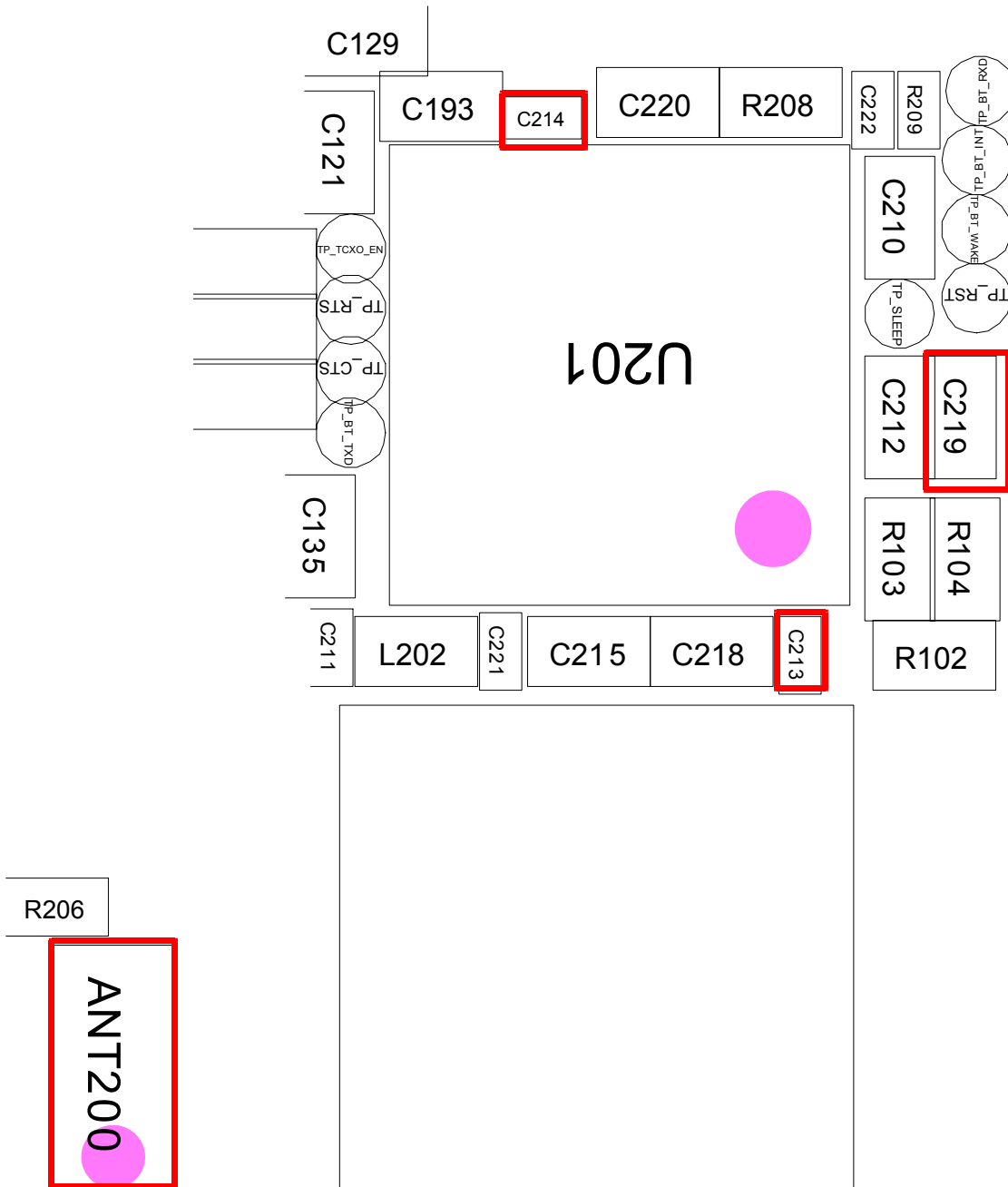


10-1-9. Bluetooth

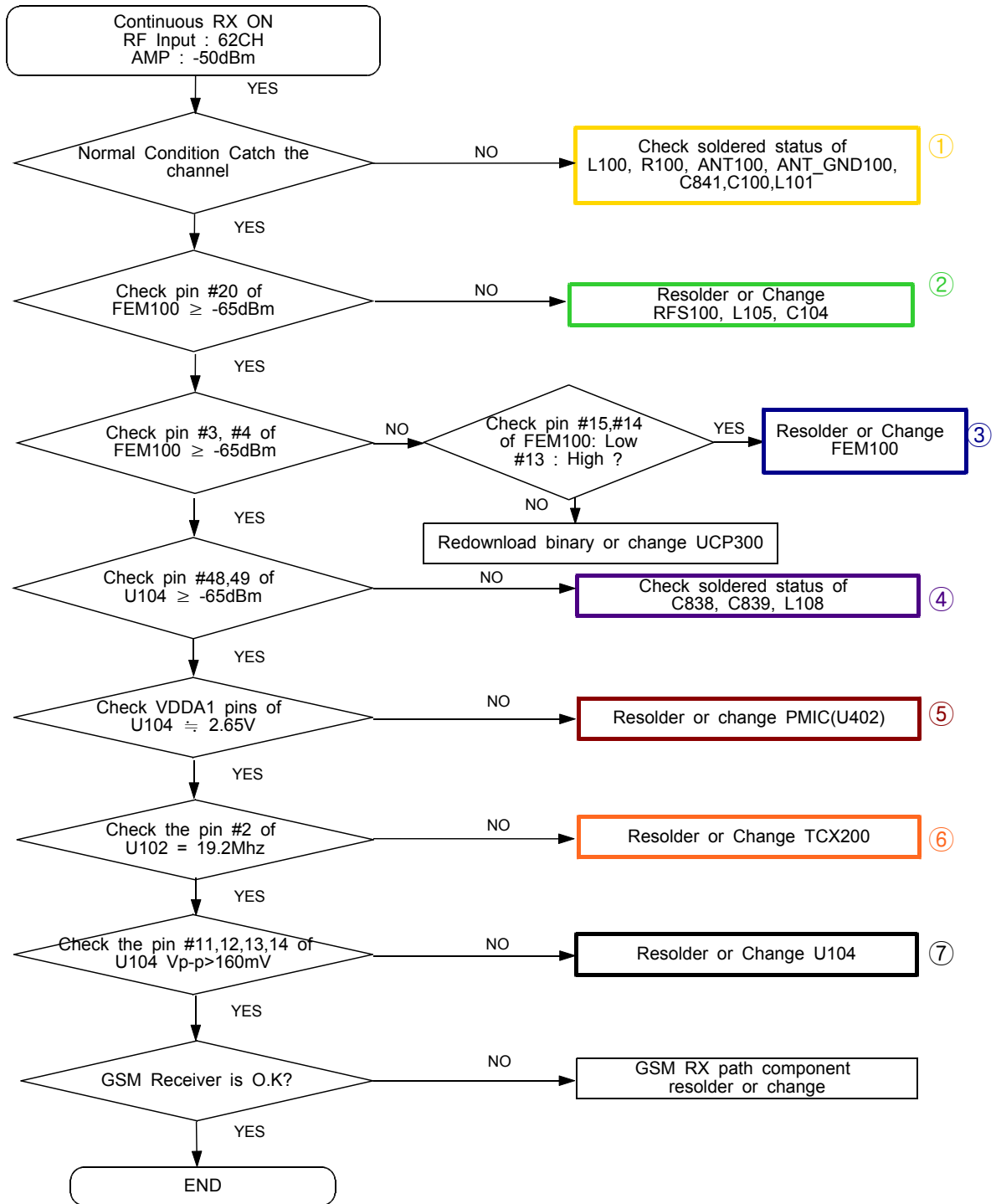


< BLUETOOTH >

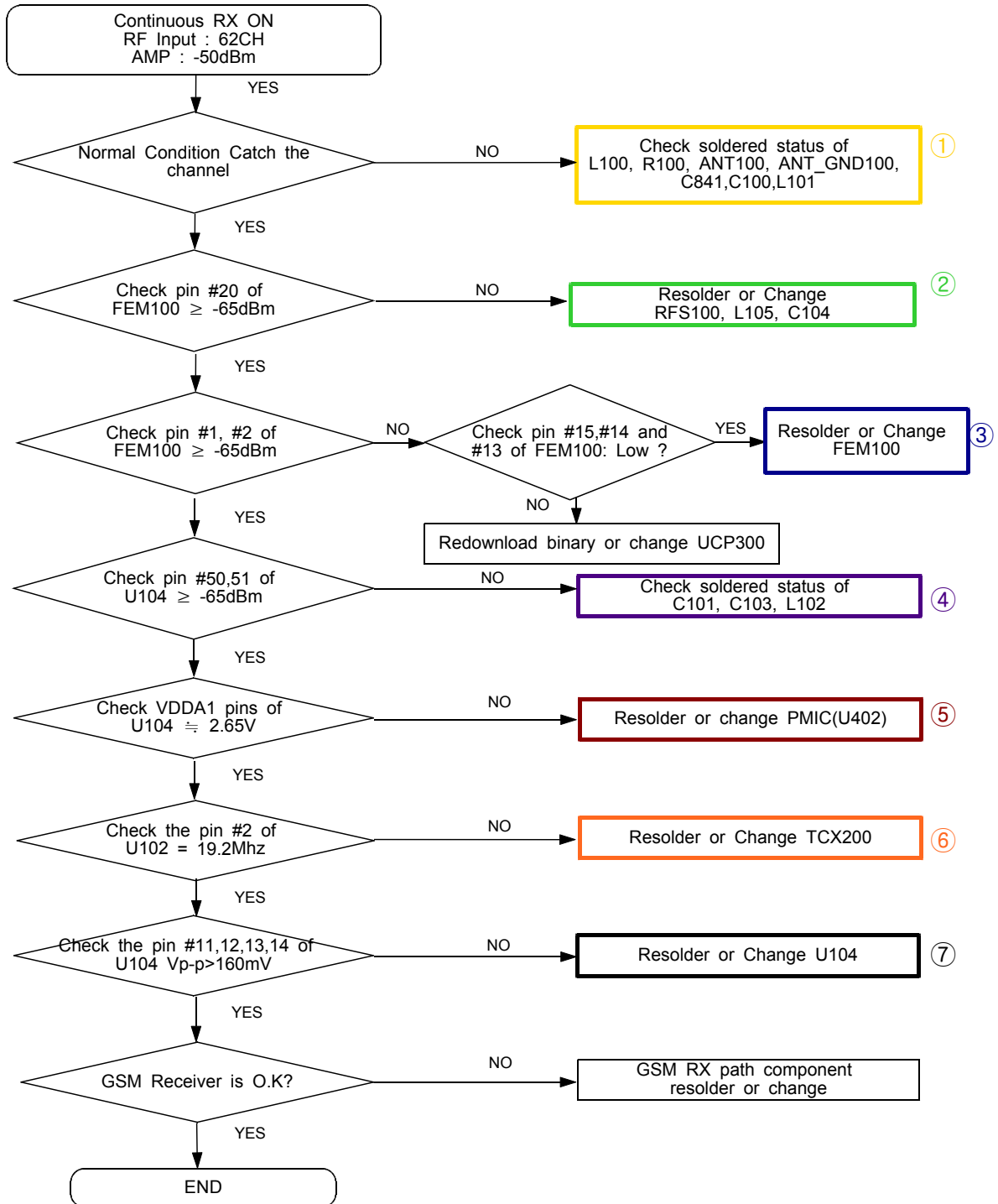




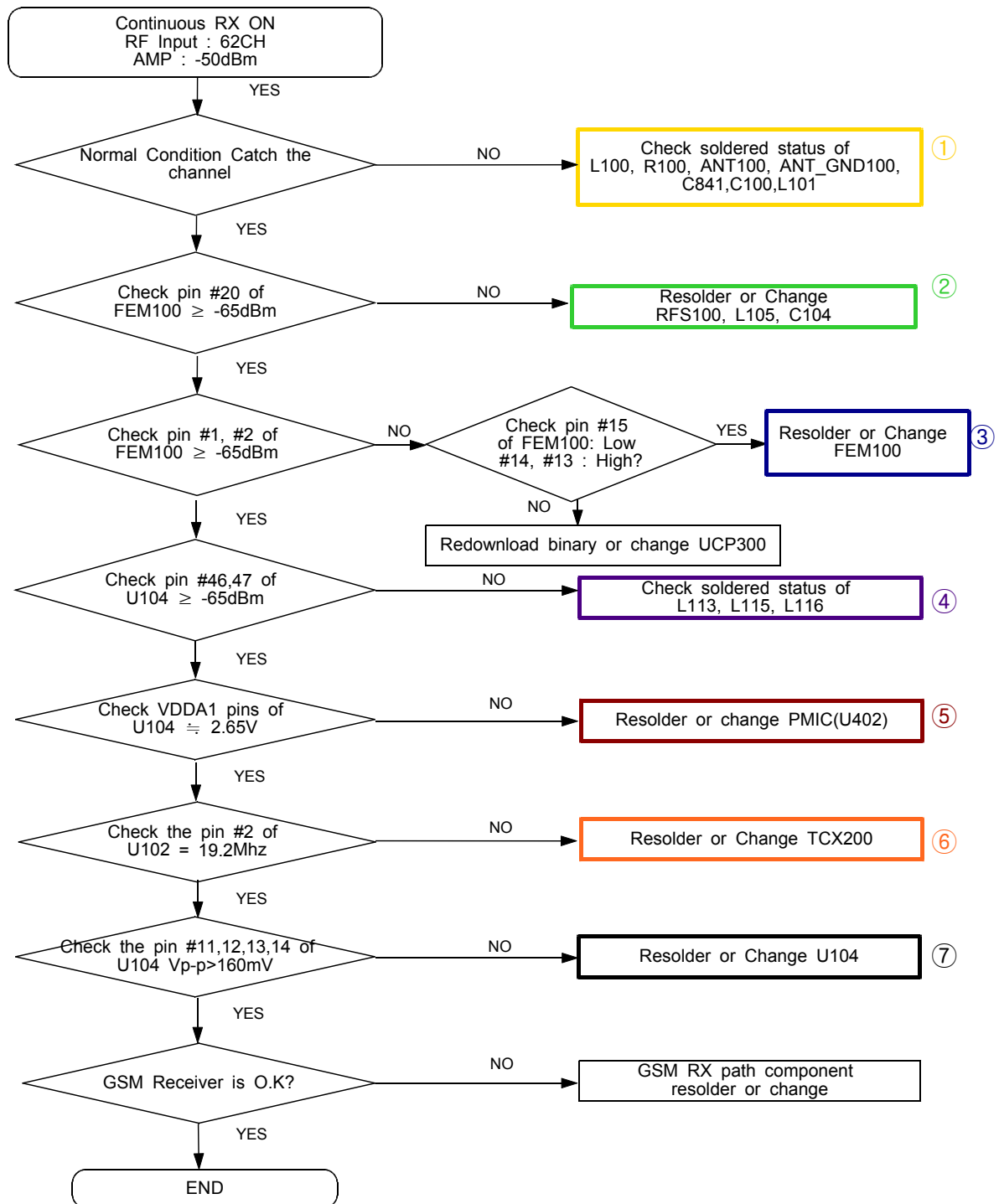
10-2.RF
10-2-1. EGSM Rx



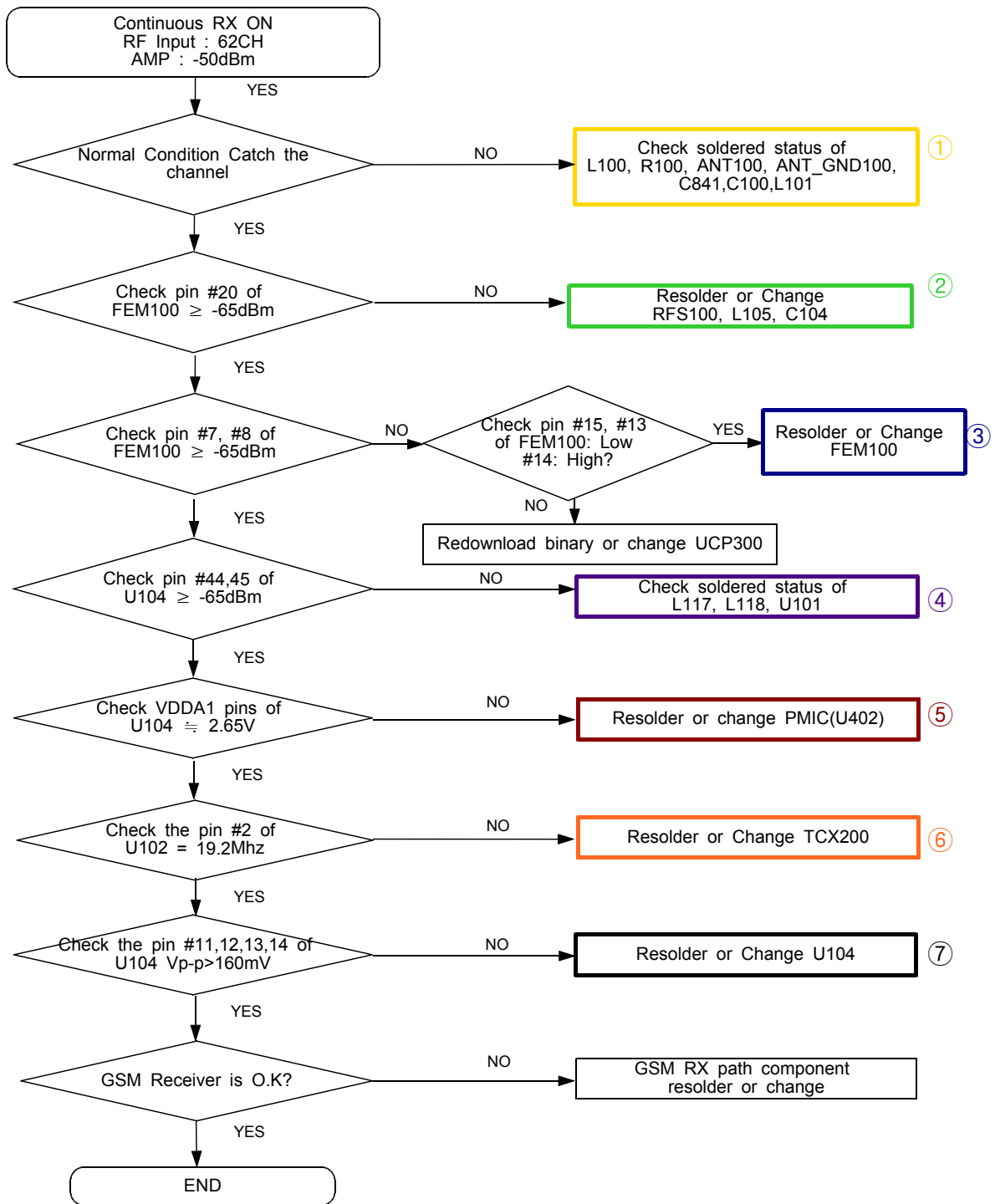
10-2-2. GSM850 Rx



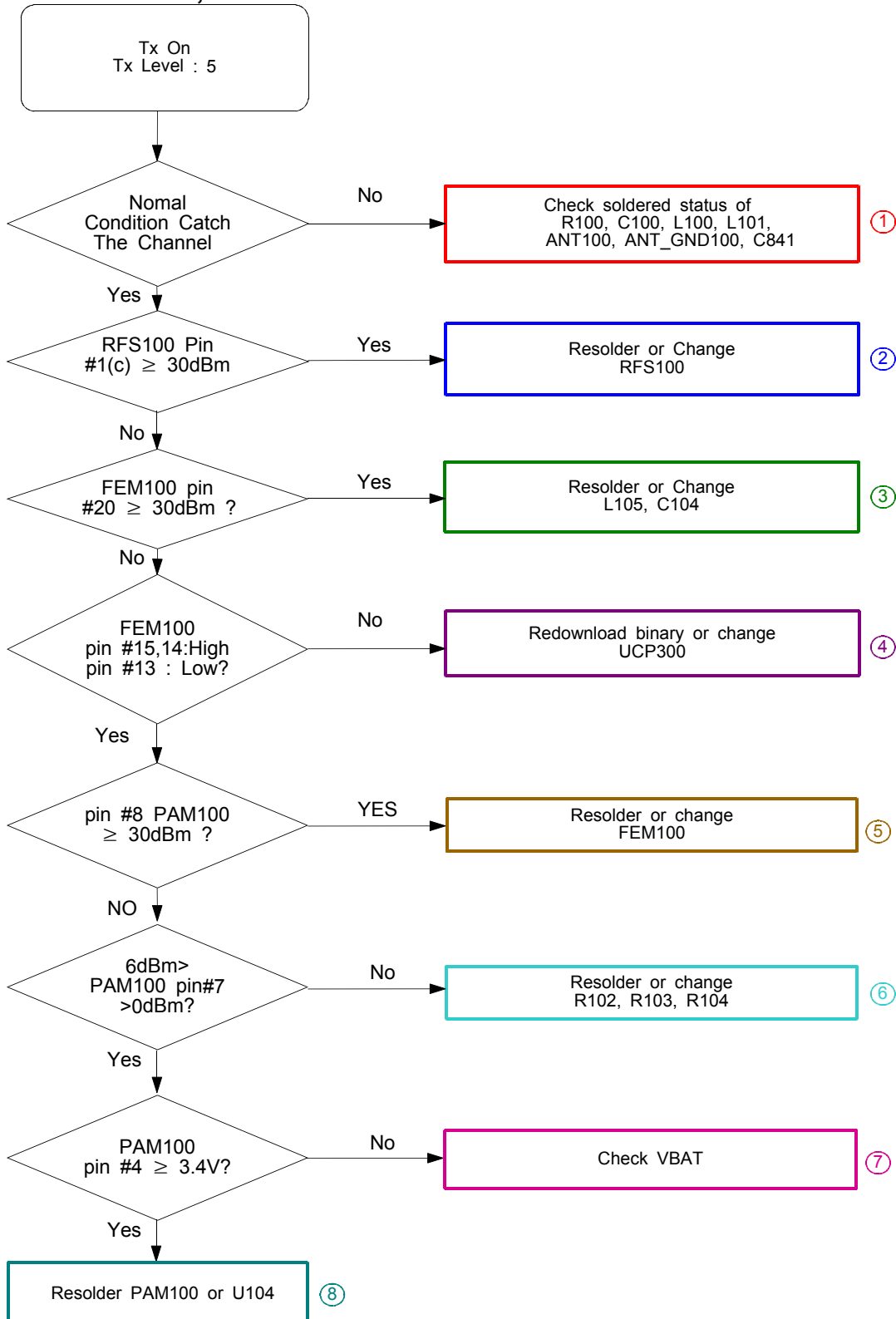
10-2-3. DCS Rx



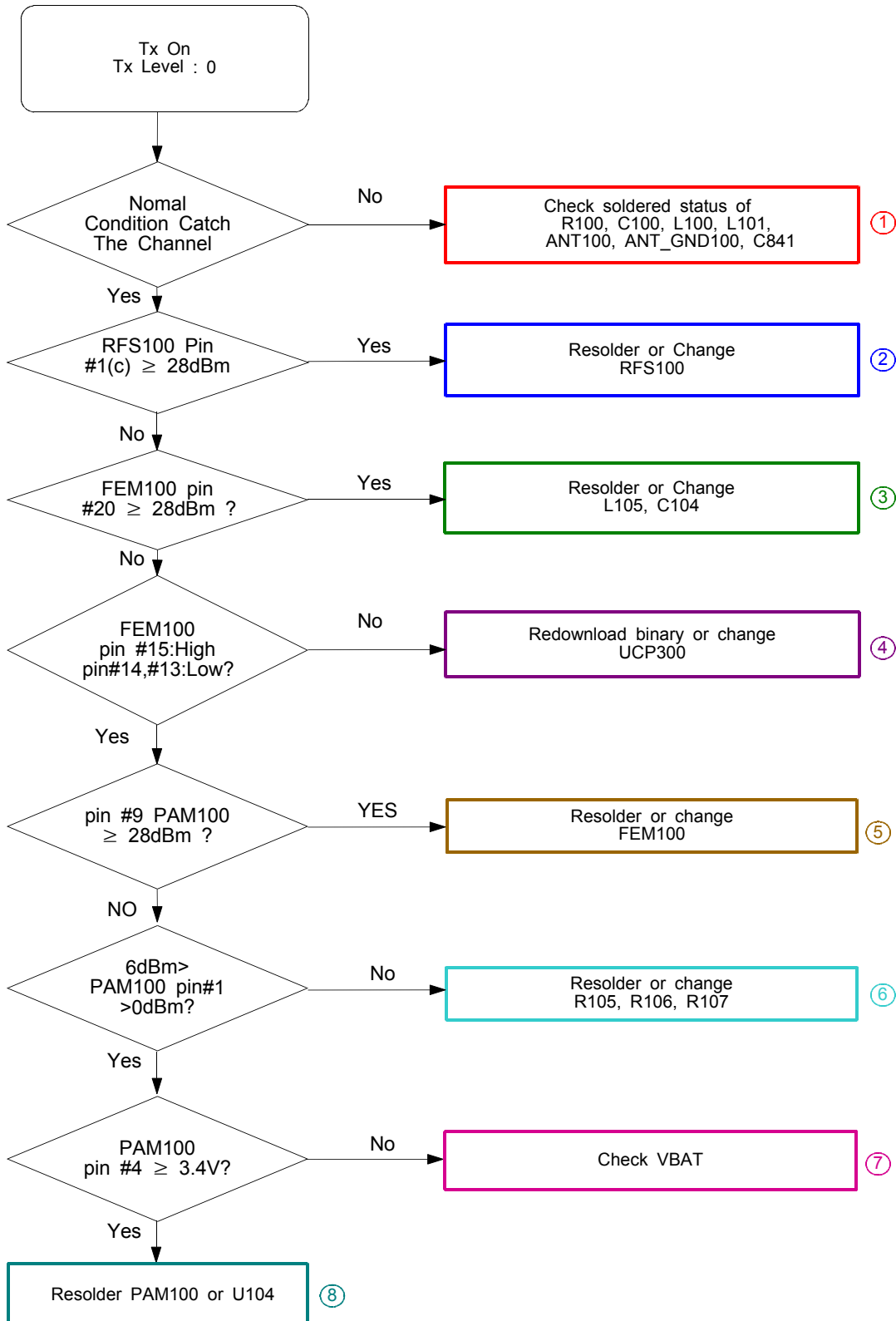
10-2-4. PCS Rx



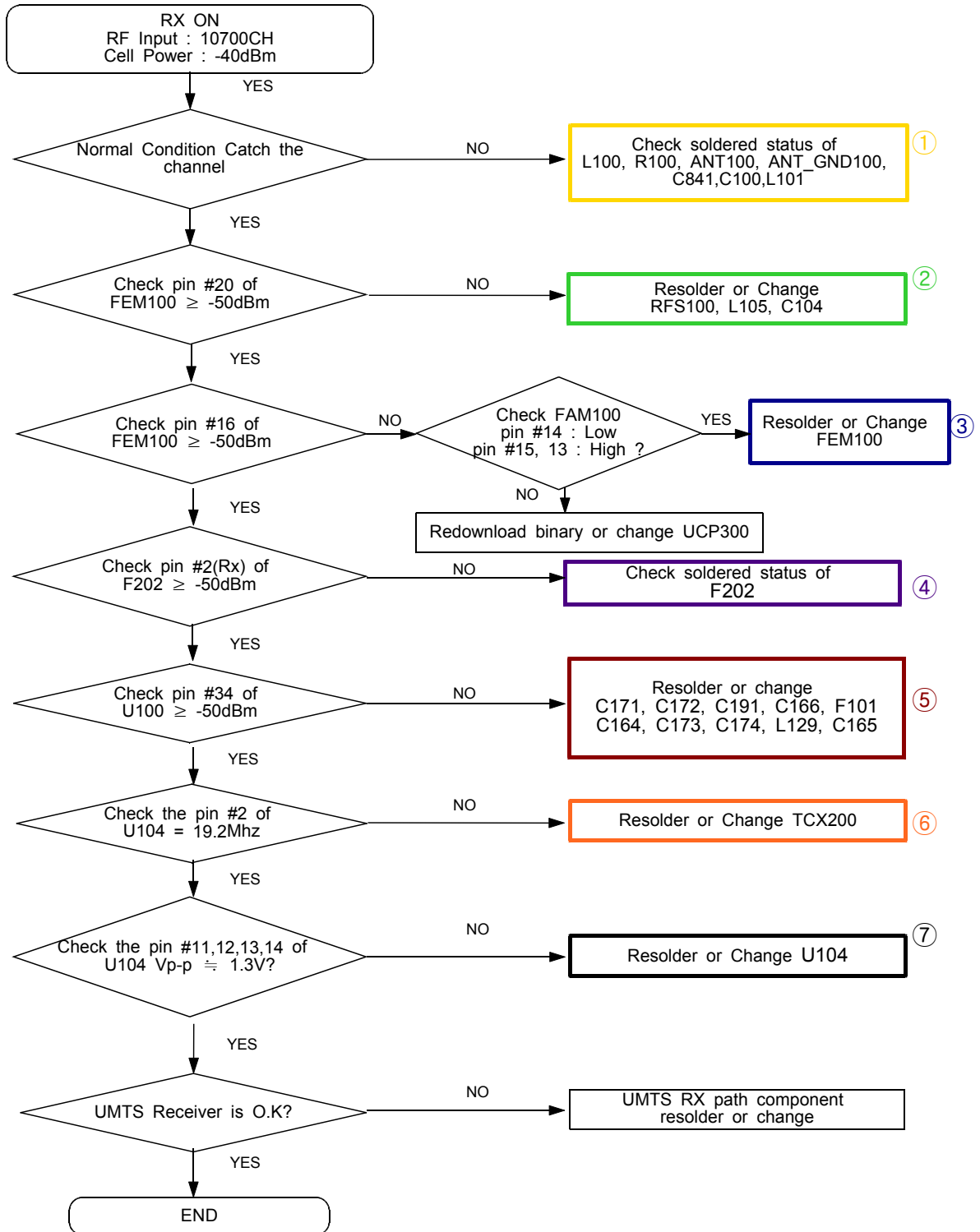
10-2-5. EGSM, GSM850 Tx



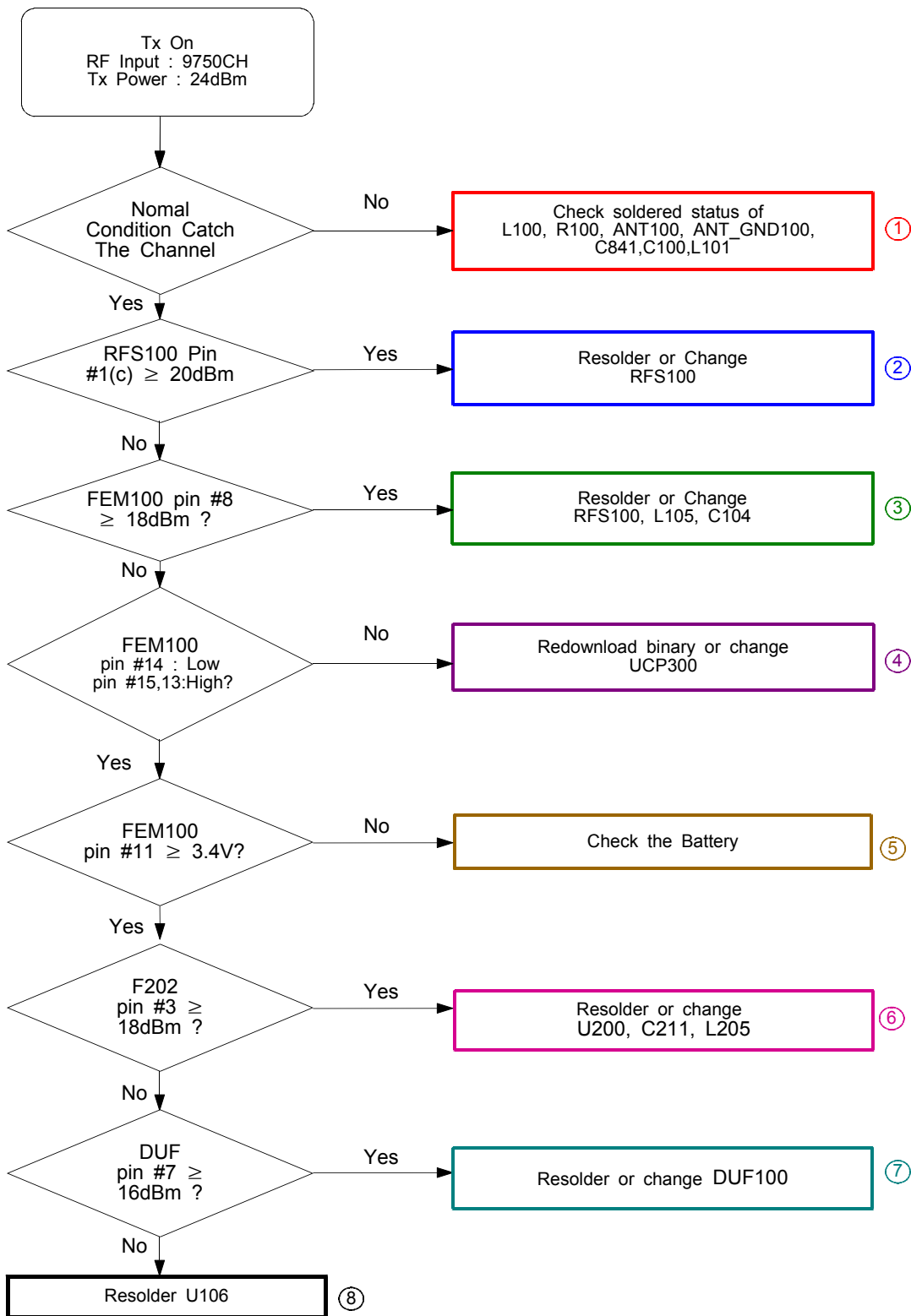
10-2-6. DCS, PCS Tx

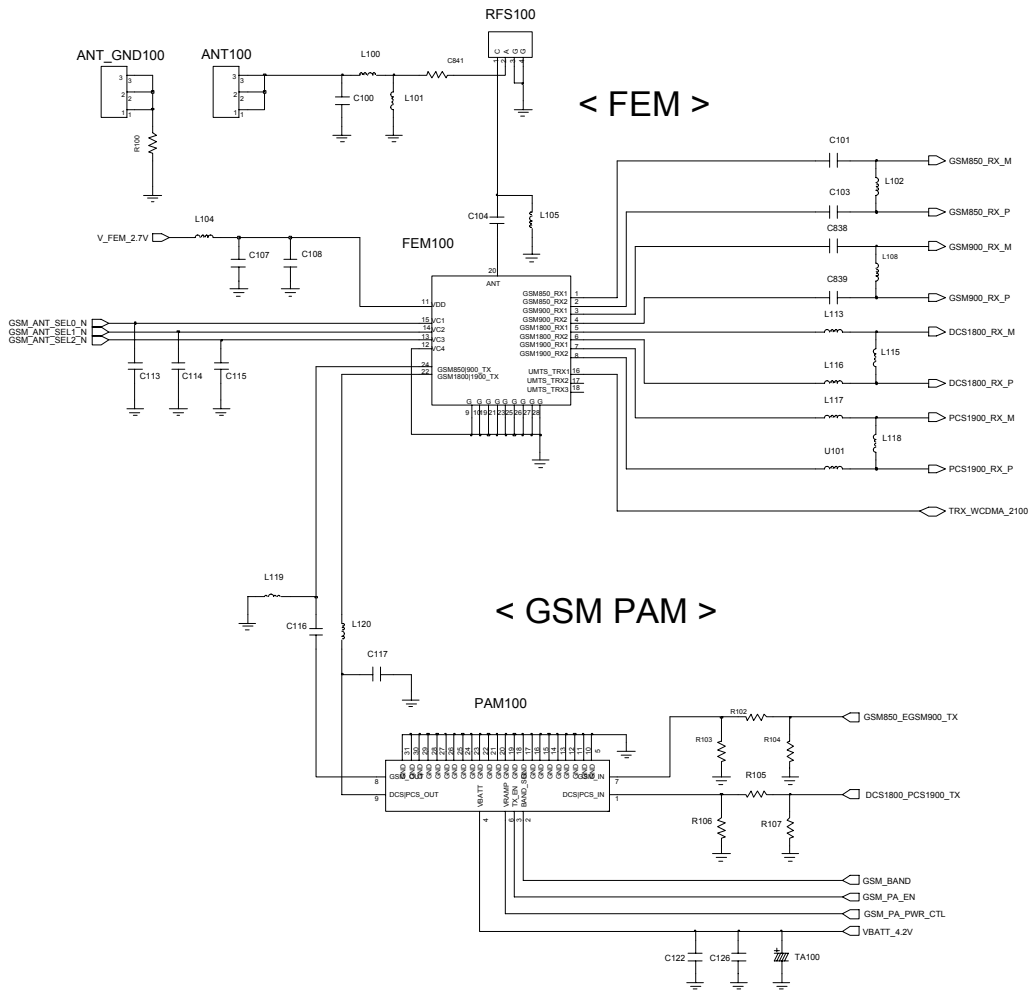


10-2-7. UMTS Rx

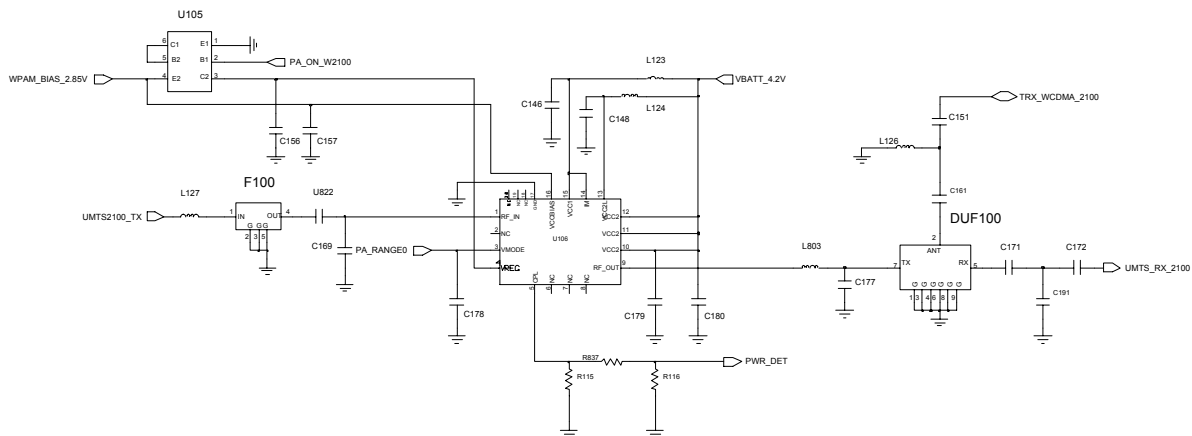


10-2-8. UMTS Tx

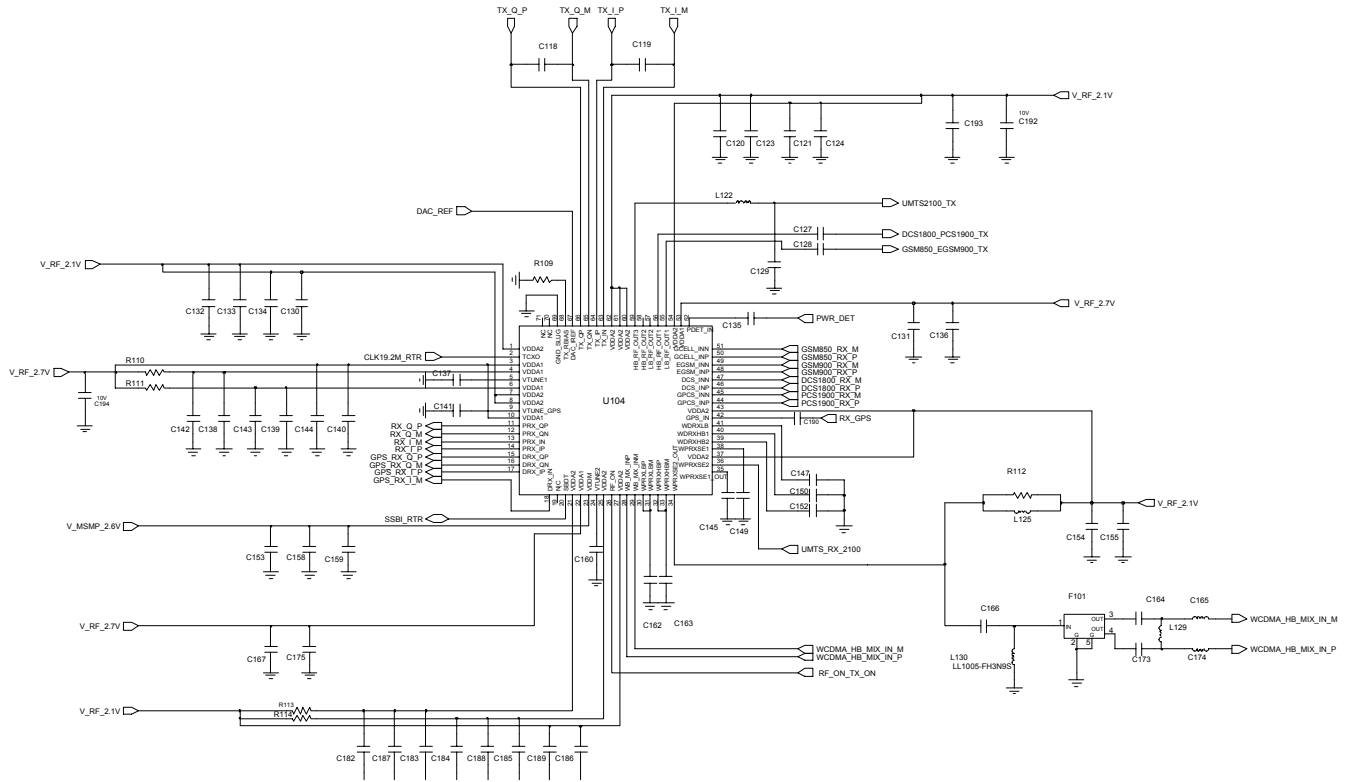




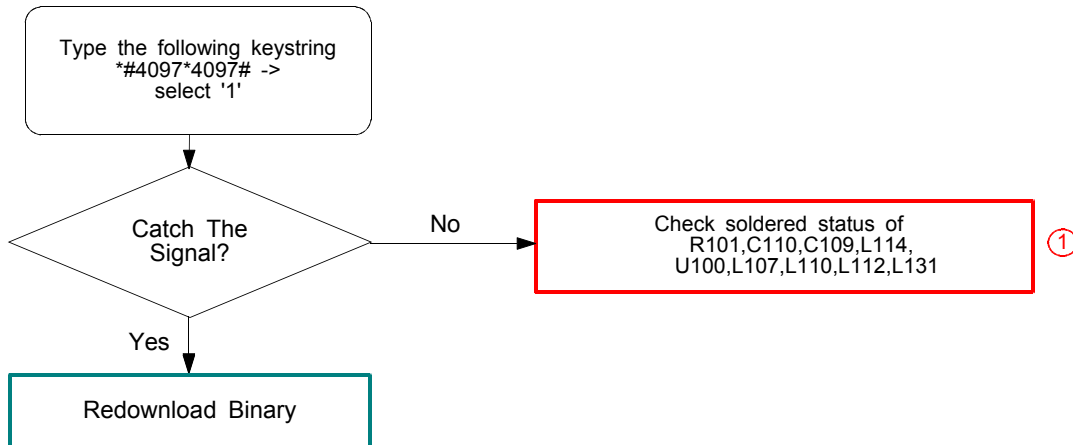
< WCDMA PAM >
(BAND1_W2100)



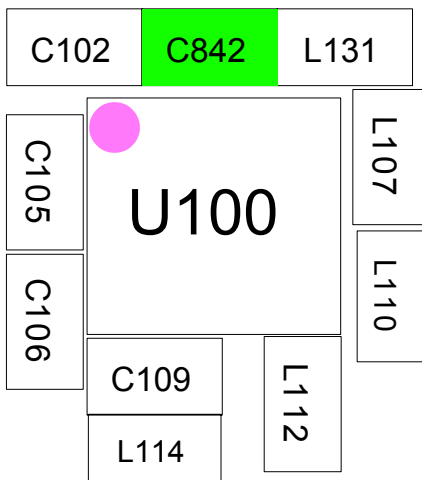
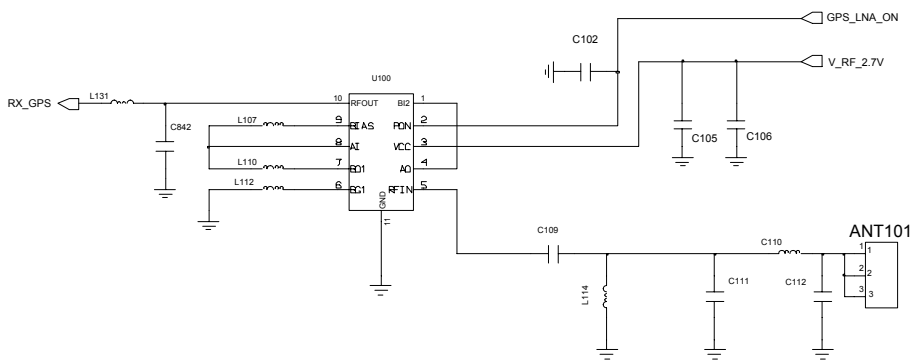
< RF TRANCEIVER >



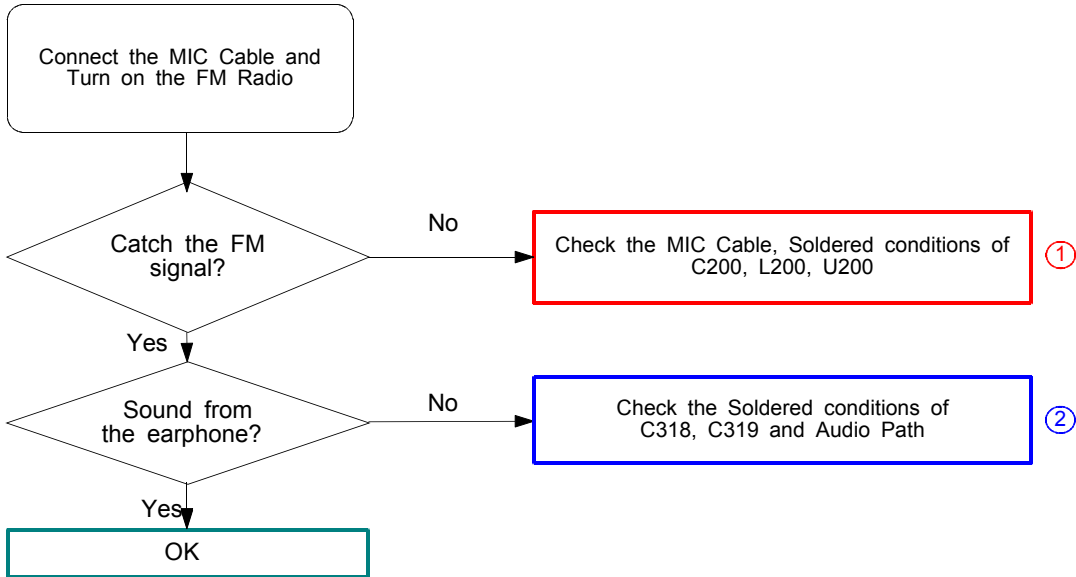
10-2-9. GPS



< LNA_GPS >



10-2-10. FM Radio



< FM RADIO >

