

## 7. Disassembly and Assembly Instructions

### 7-1. Disassembly

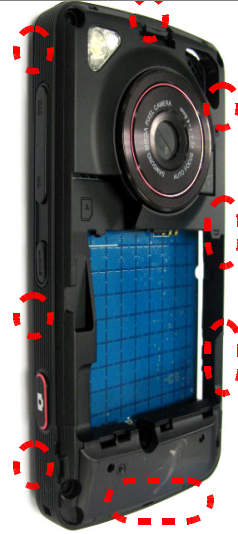
1

1) Unscrew 4 points from the rear case



2

1) Disjoint hooks



1) Be care of Shooting out damage and scratch not to occur.

1)When you disjoint a rear case from right side to left side, be care of hooks and key hanging.

3

1) Disjoint a rear case using a disjointing knife.



1) Be care of Shooting out damage and scratch not to occur..

4

1) Disjoint a rear case using a disjointing knife.



1) Be care of Shooting out damage and scratch not to occur..

5

1) Disjoint a rear ase using a disjoining knife.



1) Be care of Shooting out damage and scratch not to occur.

6

1) Disjoint a rear ase using a disjoining knife.



1) Be care of Shooting out damage and scratch not to occur..

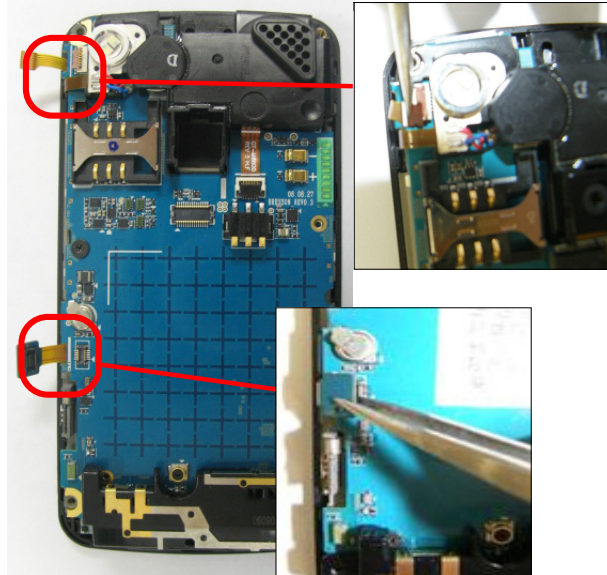
7

1) Disassemble a REAR case.



8

1) Disassemble a SUB PBA Connector and TSP FPCB.



1)Be care of damage of connector and FPCB.

9

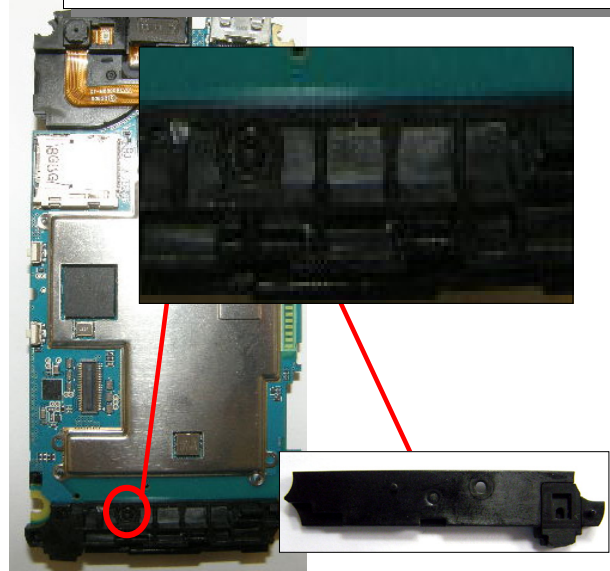
1) Disassemble LCD FPCB Connector



1) Be care of damage of connector and FPCB.

10

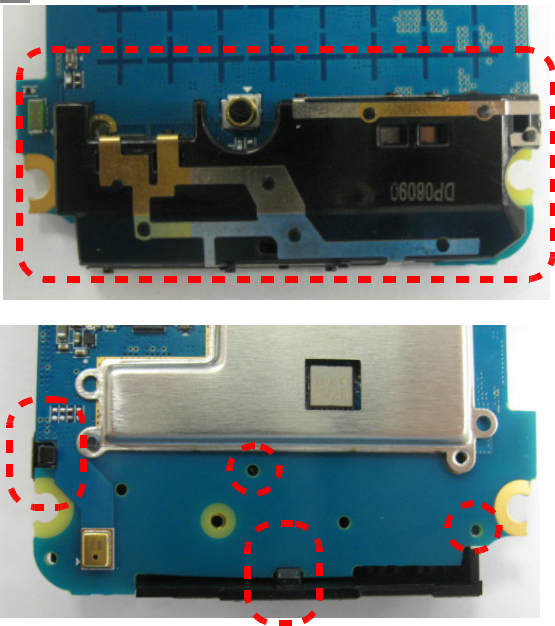
1) First unscrew Intenna screw 1point and disjoint Intenna.



1) When unscrew, be care of Shooting out damage and scratch not to occur

11

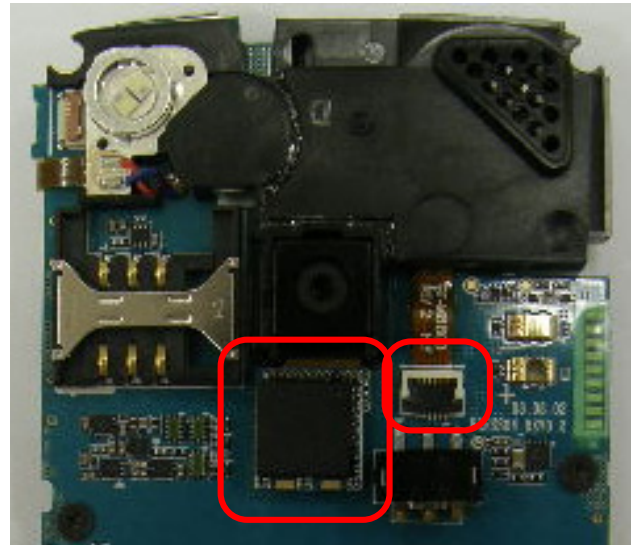
1) Disjoint Intenna.



1) Be care of damage of surrounding components.

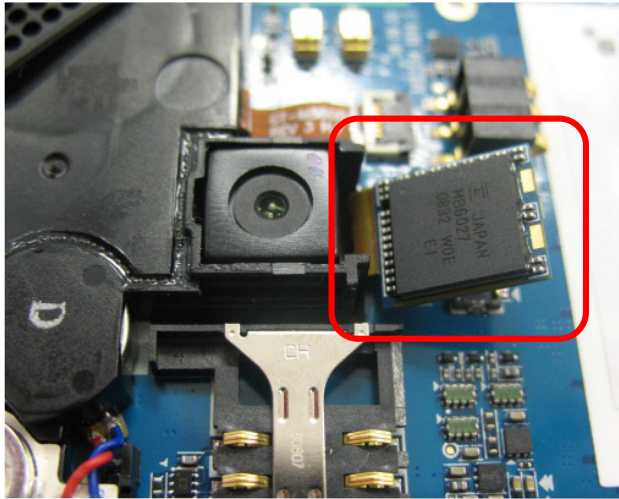
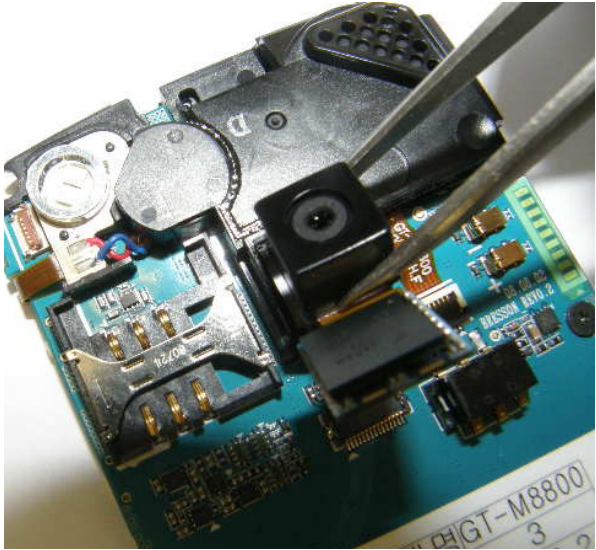
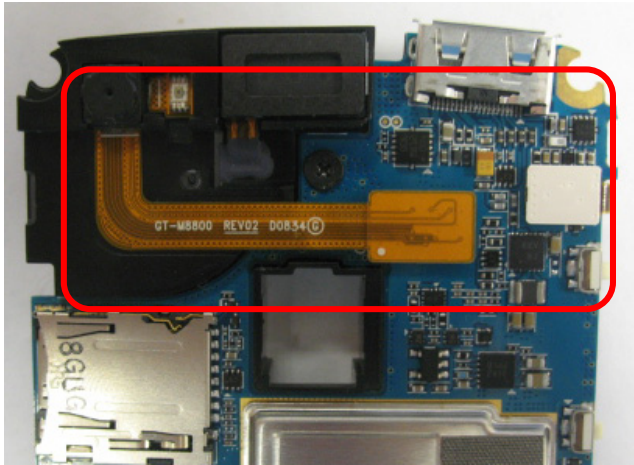
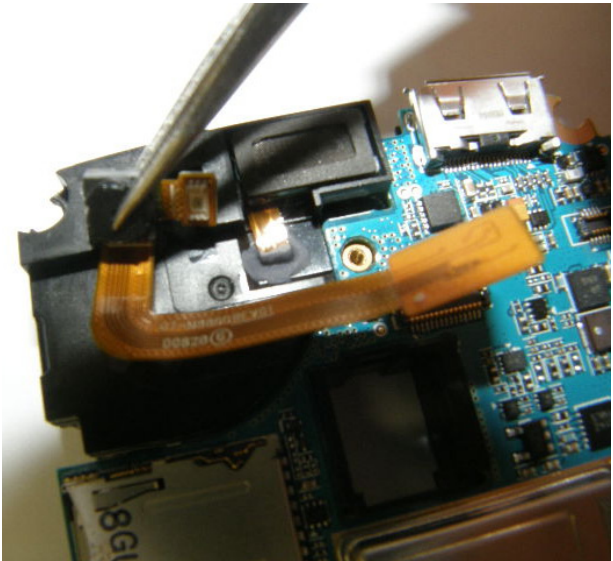
12

1) Disassemble connector.



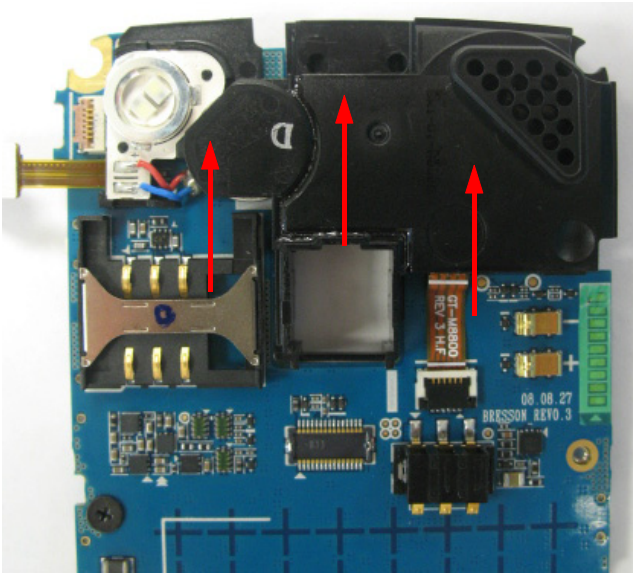
1) Be care of damage of connector and FPCB.



<p><b>13</b> Disjoint camera connector.</p> 	<p><b>14</b> 1) Disassemble Camera</p> 
<p>1) Be care of damage of connector and FPCB.</p>	<p>1) Be care of shooting out Camera module and scratch not to accur.</p>
<p><b>15</b> 1) Disjoint Connector and screw 1 point</p> 	<p><b>16</b> 1) Disassemble CIF Camera</p> 
<p>1) When unscrew, be care of damage and scratch not to accur. 2) Be care of damage of connector and FPCB.</p>	<p>1) Be care of shooting out Camera module and damage of FPCB</p>

17

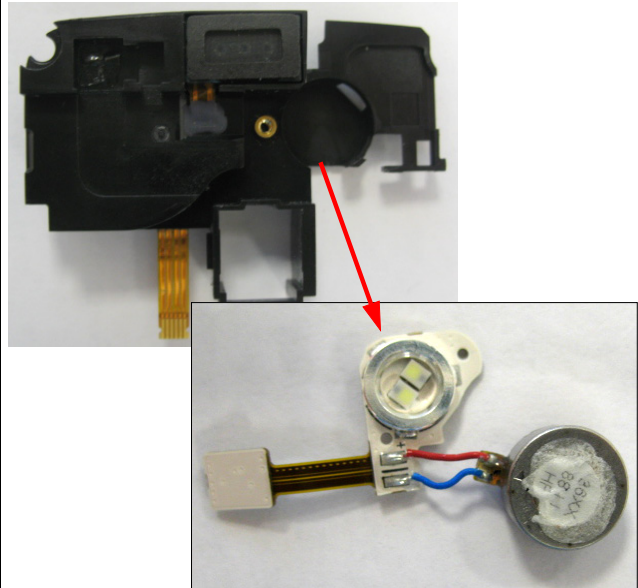
1) Disassemble speaker bracket



1) Be care of Shooting out damage and scratch not to occur.

18

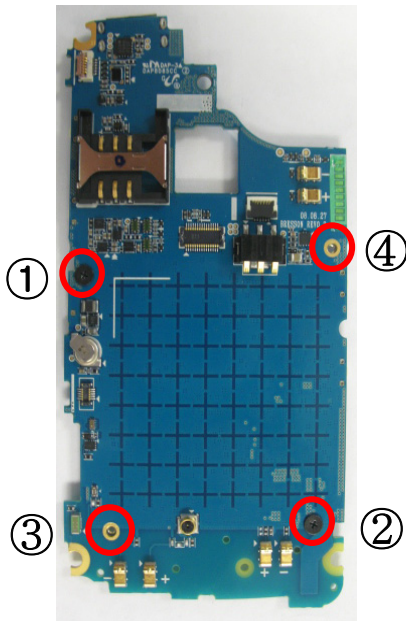
1) Disassemble LED and vibration motor.



1) Be care of Shooting out damage and scratch not to occur. .

19

1) Unscrew 4point of shieldcan sew.



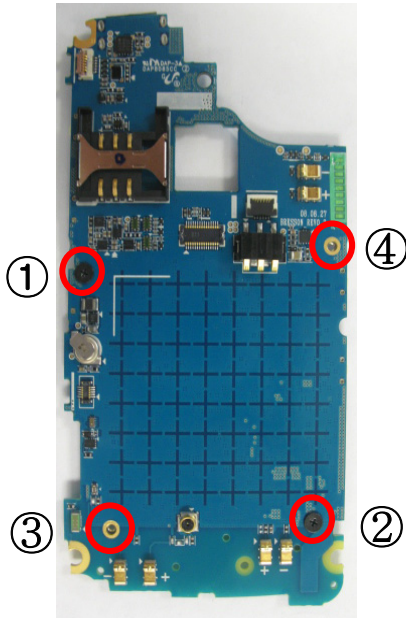
1) Be care of Shooting out damage and scratch not to occur.



## 7-2. Assembly

1

1) screw 4point of sheildcan.

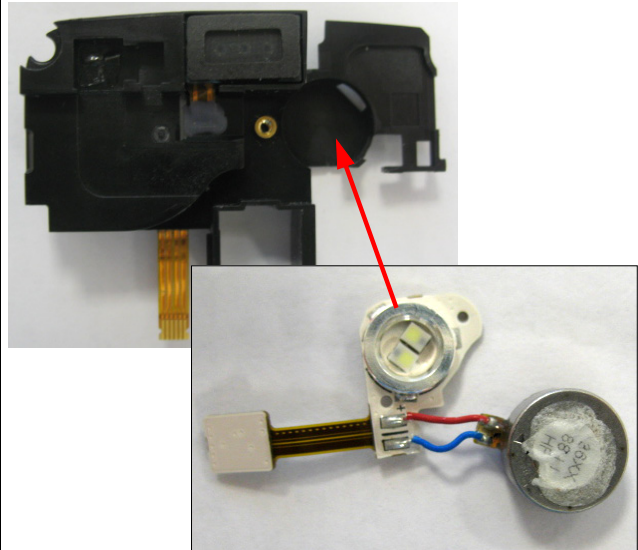


1) Be care of Shooting out damage and scratch not to occur.

2) Screw size :  
TORQUE :

2

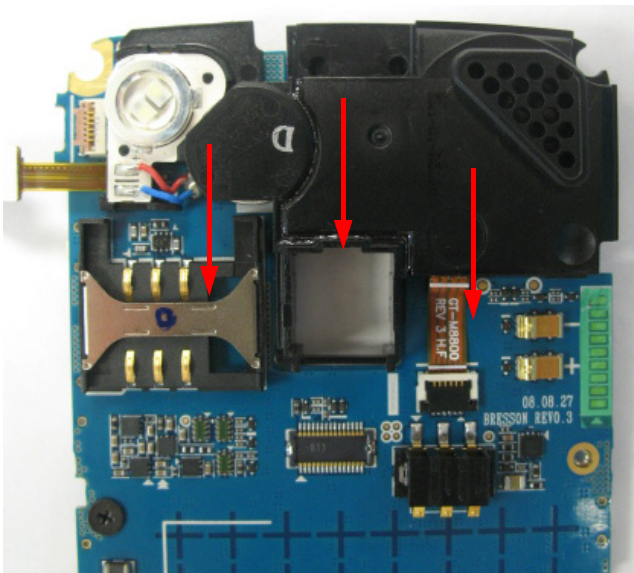
1) Joint a LED and a vibration motor.



1) Be care of Shooting out damage and scratch not to occur..

3

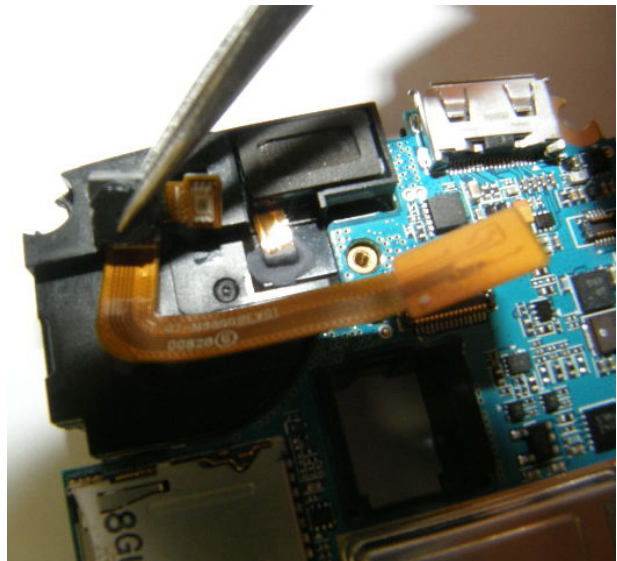
1) Assemble a speaker bracket.



1) Be care of Shooting out damage and scratch not to occur.

4

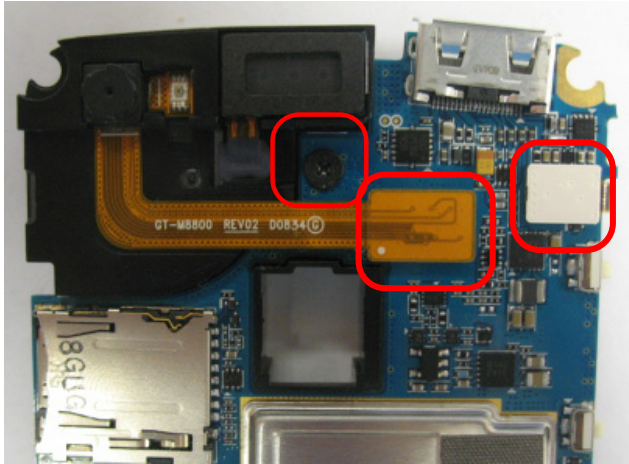
1) Jiont a CIF Camera



1) Be care of shooting out a Camera module and damage of a FPCB.

5

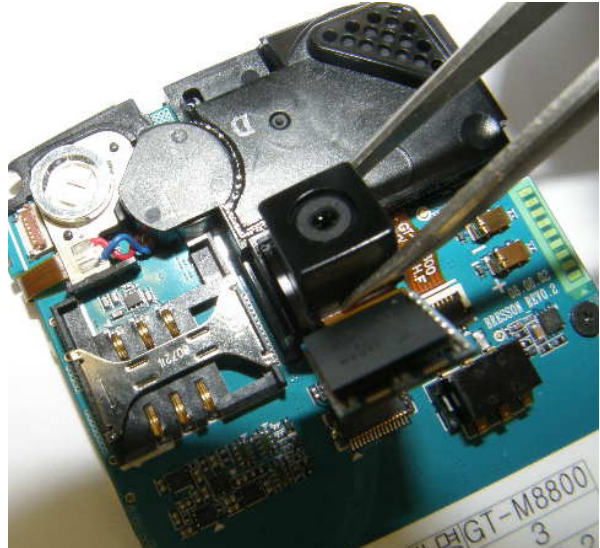
1) Assemble a Connector and screw 1 point



1) Be care of Shooting out damage and scratch not to occur.  
 1) Be care of damage of FPCB.  
 Check the silkline.

6

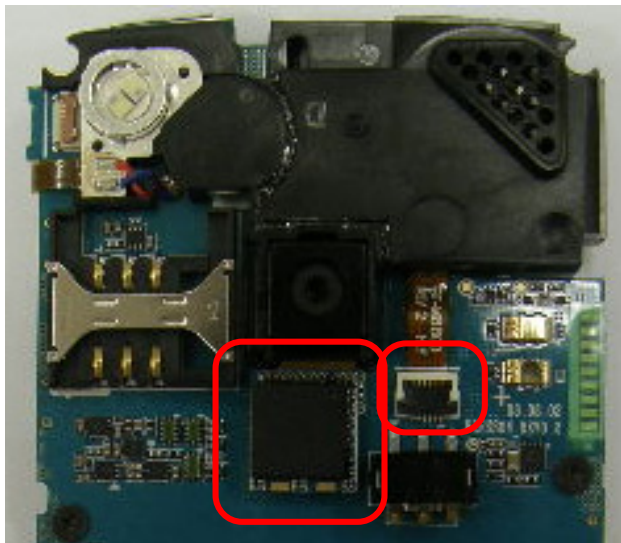
1) joint a Camera



1) Be care of Camera module's damage and scratch

7

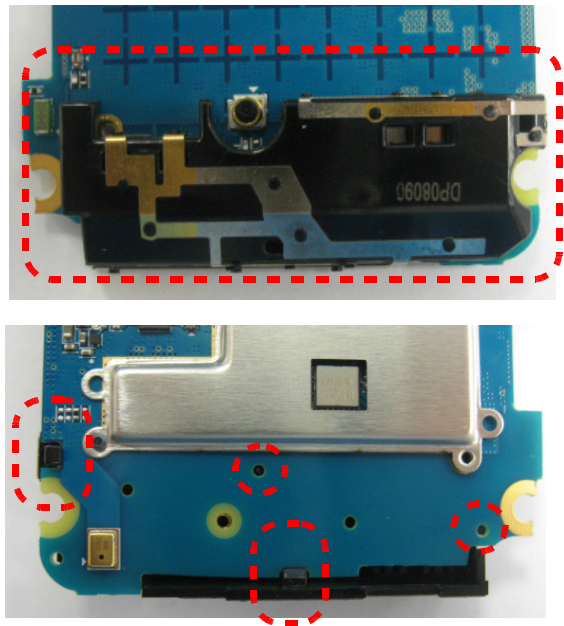
1) joint a Connector



1) Be care of FPCB's damage.  
 Check the silkline.

8

1) Assemble a antenna

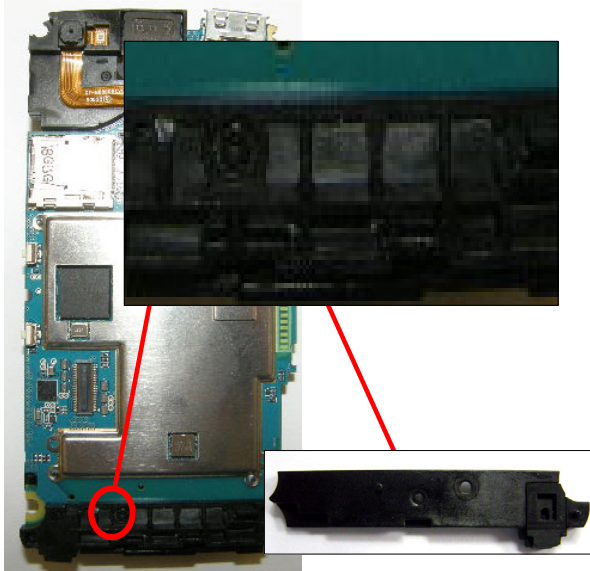


1) Be care of damage and scratch.



9

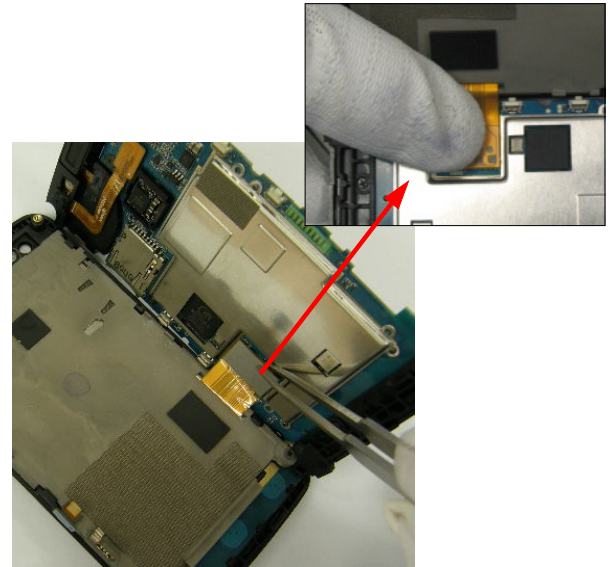
1) Joint Intenna screw 1 point



- 1) Be care of damage and scratch
- 2) Screw size :
- TORQUE :

10

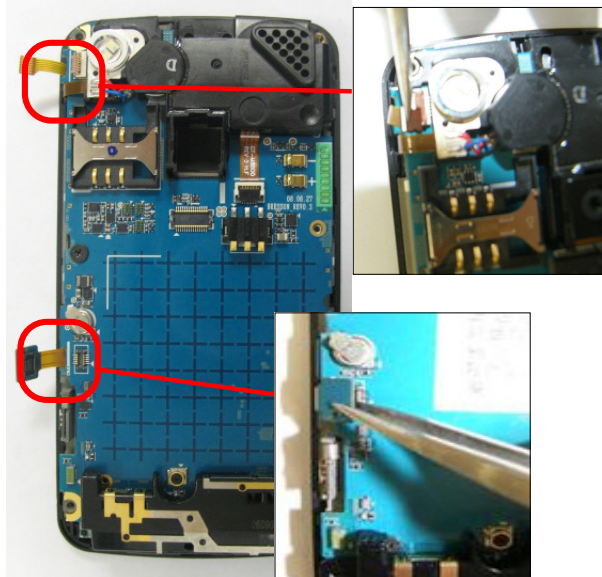
1) Assemble a LCD FPCB Connector.



- 1) Be care of FPCB's damage

11

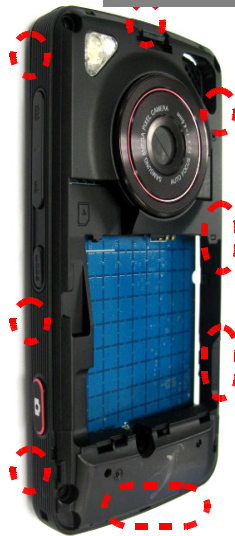
1) Joint SUB PBA Connector and TSP FPCB



- 1) Be care of connector and FPCB's damage.

12

1) Joint rear's hooks



- 1)When you joint a rear case from left side to right side, be care of hooks and key hanging.
- 2) Screw size :
- TORQUE :



13

1) Joint screw 4 point of rear.



1)Be care of damage and scratch