

4. Array Course Control

4-1. Software Adjustments



Test Jig (GH99-36900A)



Test Cable (GH39-01160A)



RF Test Cable (GH39-00985A)



RF Test Cable (GH99-38251A)

4-2. Software Downloading

4-2-1. Pre-requisite for Download

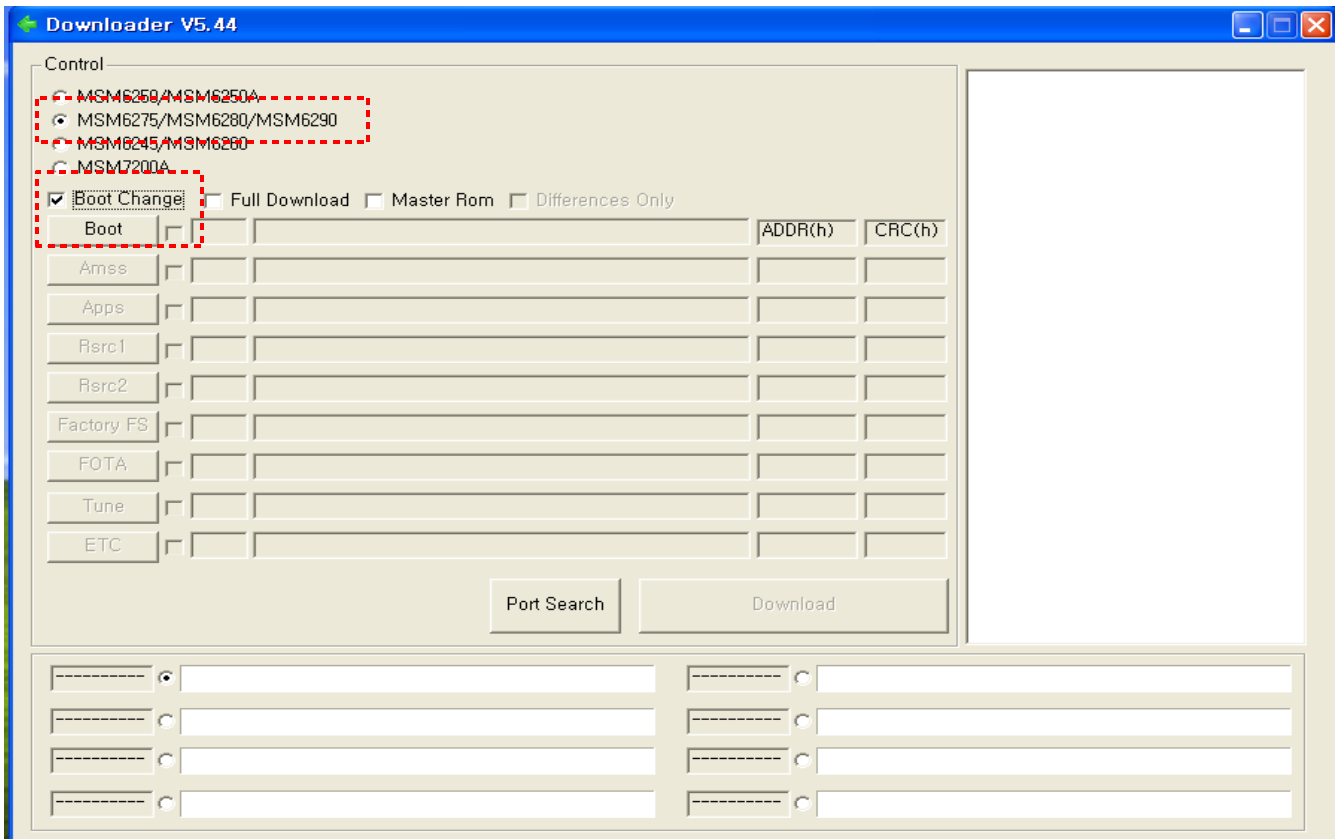
- Downloader Program(**Multiloader V5.50.exe**)
- M8800 Mobile Phone
- USB Data Link Cable
- Binary files

4-2-2. S/W Download Process

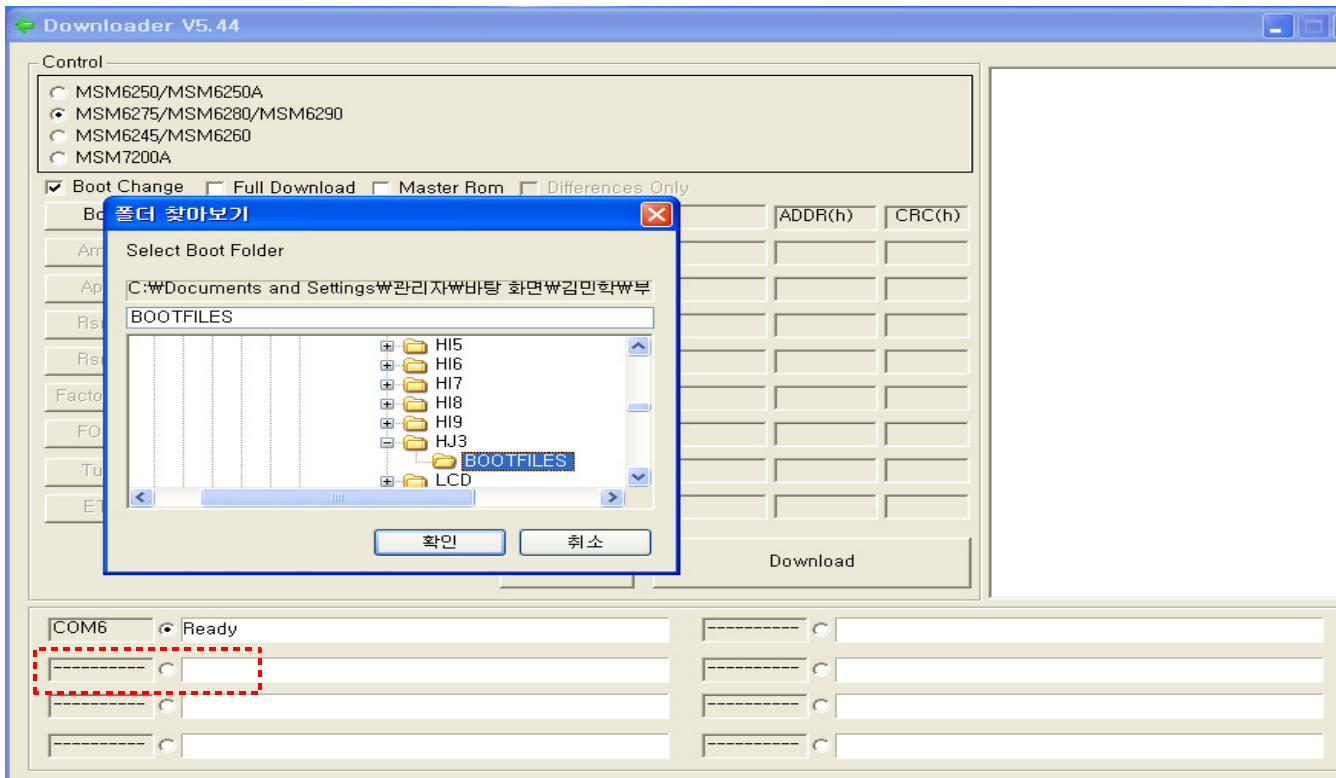
■ Load the binary download program by executing the “**Multiloader V5.33.exe**”

1. Execute the download SW, Multiloader.exe.
2. Boot the M8800 by pressing 'Power ON Key' + 'CAMERA key' + 'VOLUME DOWN Key' at the same time.
 - if you do properly, you can see the 'DOWMLOAD' in the middle of the screen.
3. Connet the USB data cable to the M8800.
4. Choose MSM6275/MSM6280 and check 'Boot Change', then the 'Boot' button will be activate

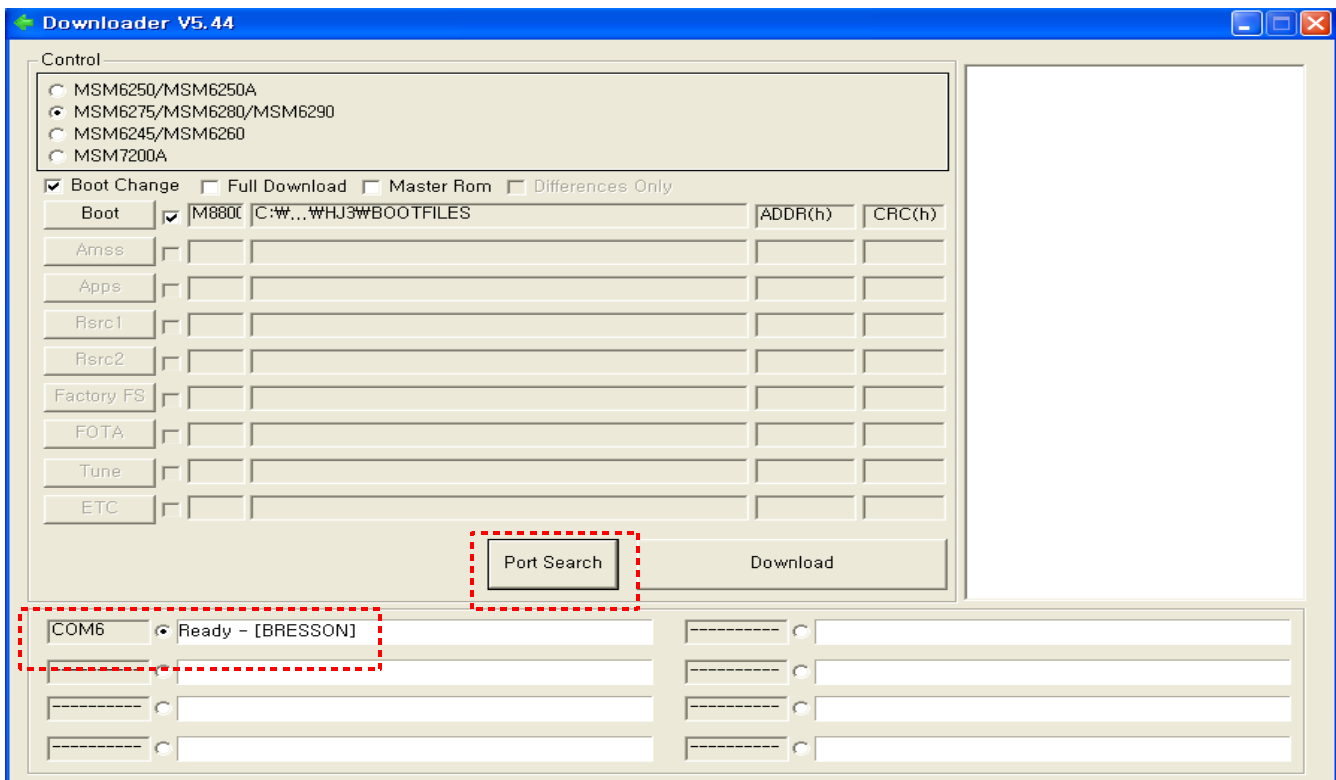
d.



- Click the 'Boot', then the dialogue box is opened. Select the wanted directory, and press 'OK'.



- Select 'Port Search', then 'Port' is activated.



- Click 'Download', then downloading is executed successively. After 10seconds,

M8800 rebooting.

9. Disconnet the USB data cable to the M8800.

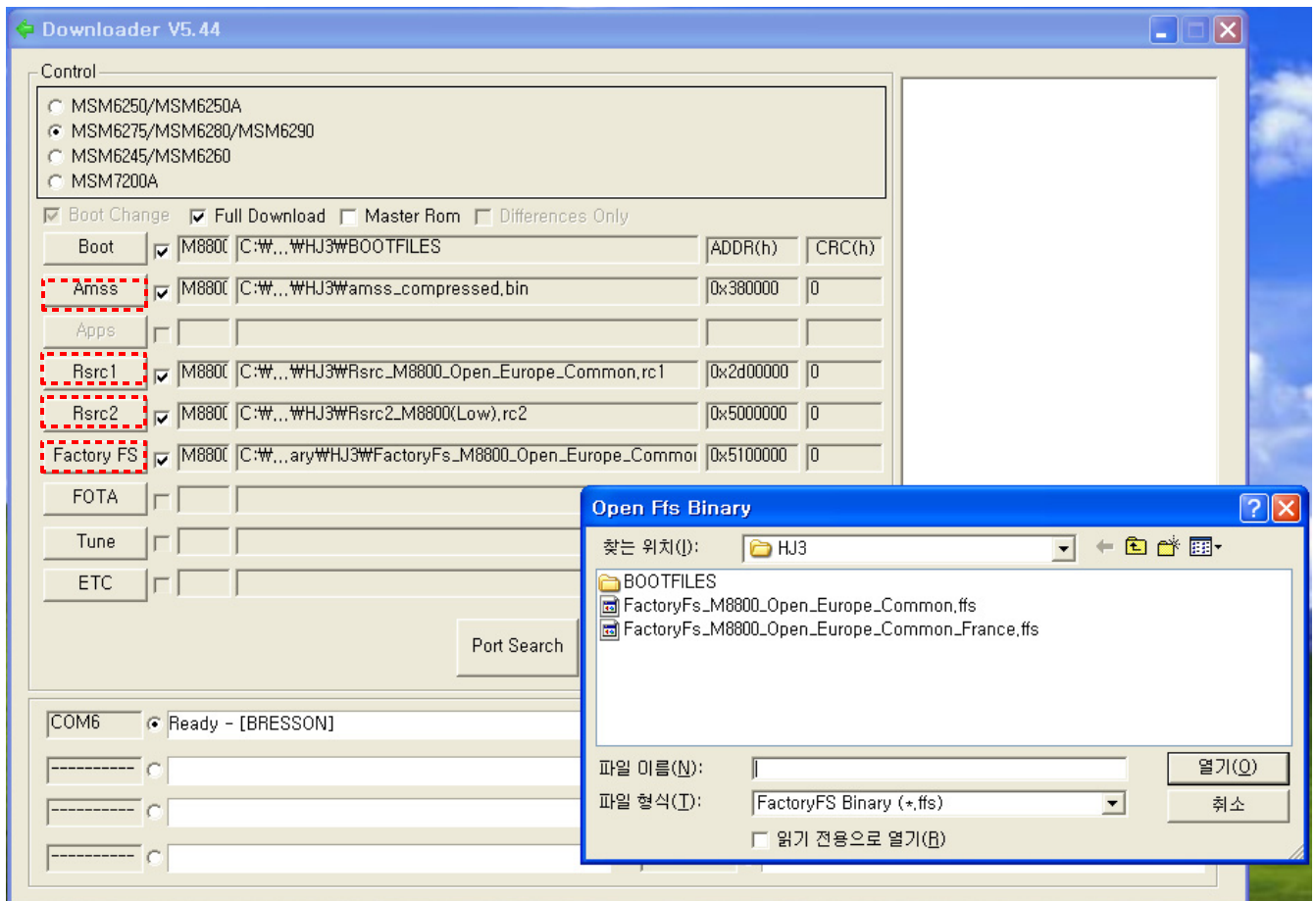
10. One more Boot the M8800 by pressing 'Power ON Key' + 'CAMERA key' + 'VOLUME DOWN Key' at the same time.

- if you do properly, you can see the 'DOWMLOAD' in the middle of the screen.

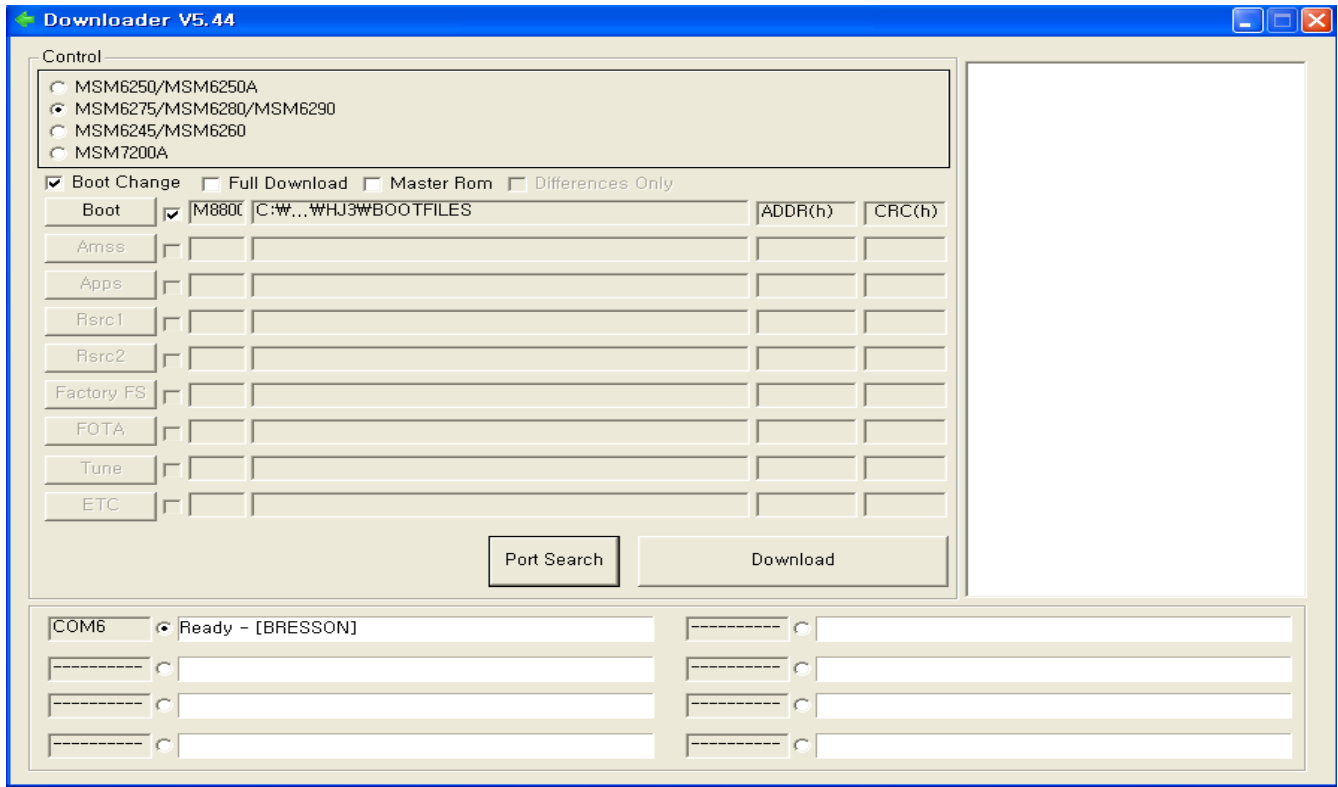
11. Connet the USB data cable to the M8800.

12. Select the 'Boot Change' once more, then 'Boot' button will be inactivated, and the others('Amss', 'Rsrc1', 'Rsrc2', 'FactoryFS', 'FOTA', and 'ETC') are activated.

- Click 'AMSS', 'Rsrc1', 'Rsrc2', and 'FactoryFS' each, and select wanted files.



12. Select 'Port Search', then 'Port' is activated.



13. Click 'Download', then downloading is executed successively. If the download is completed, S/W downloading is finished. (Download time : about 5 minutes)

