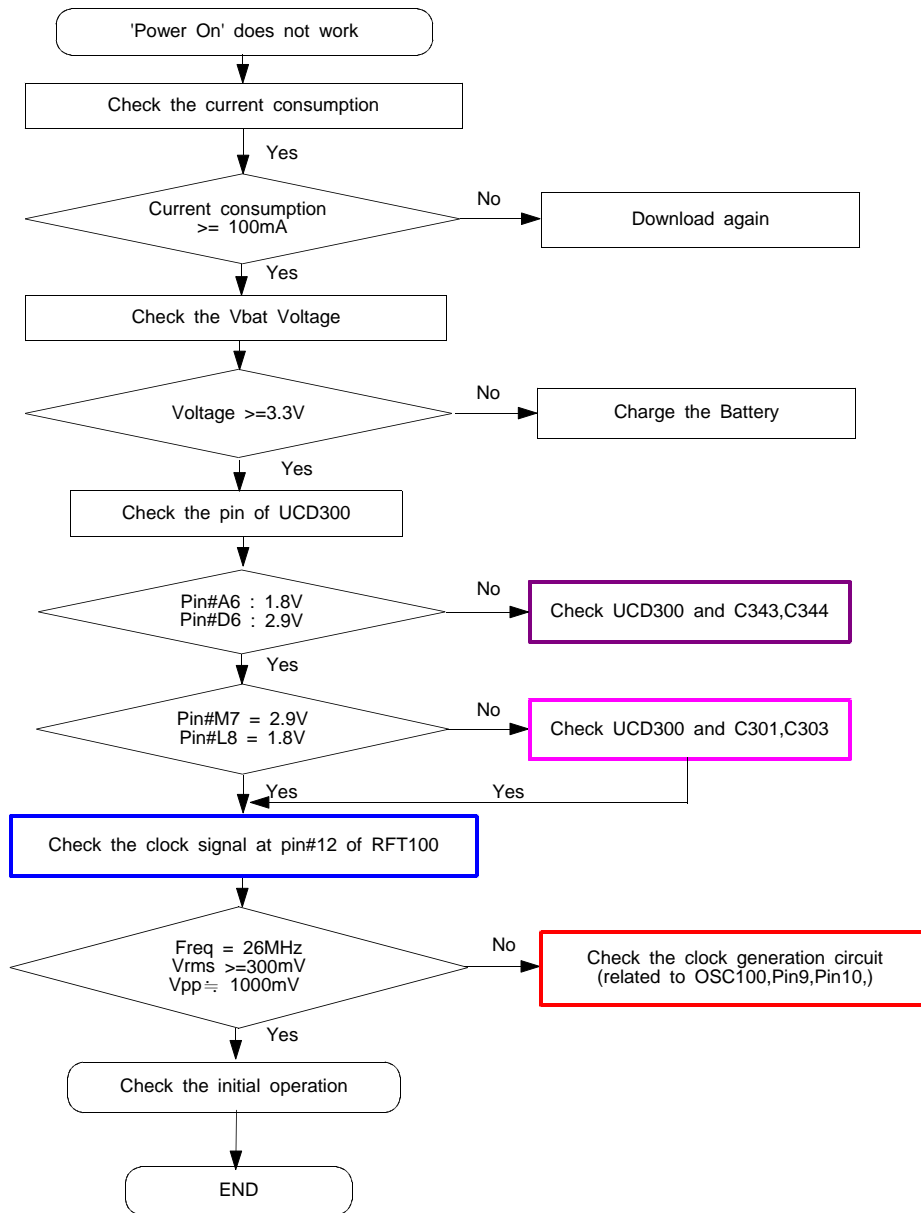
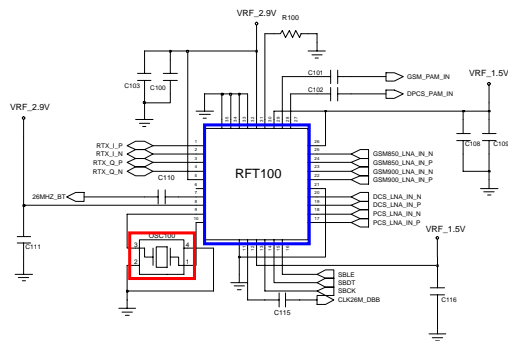
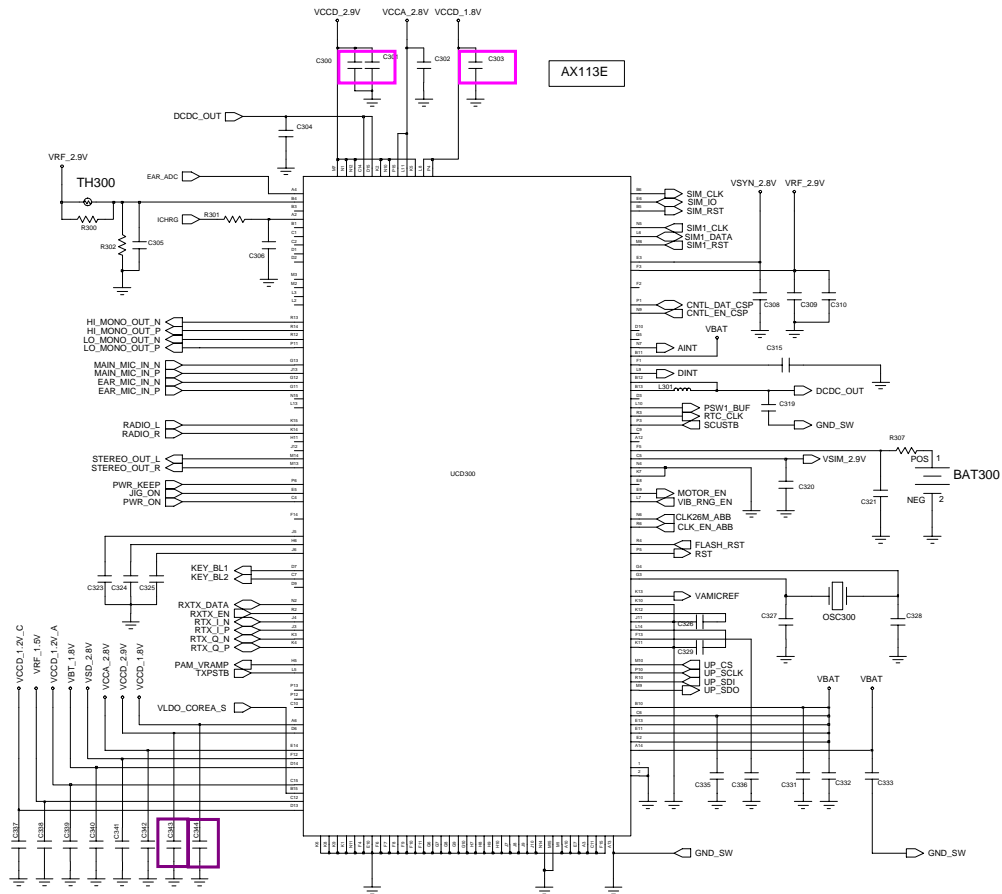
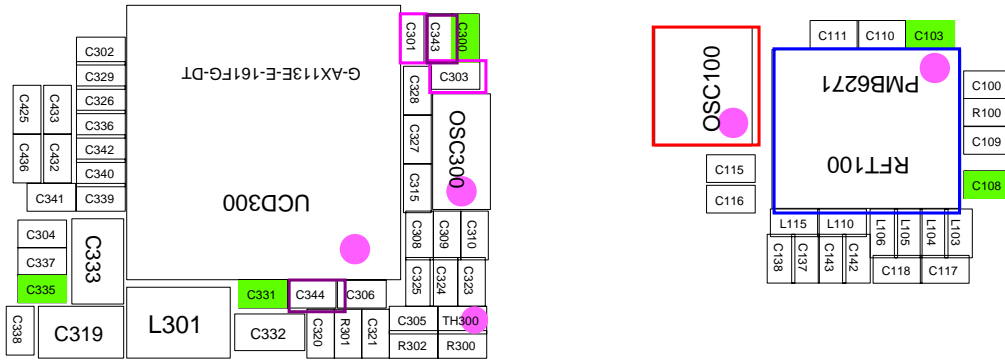


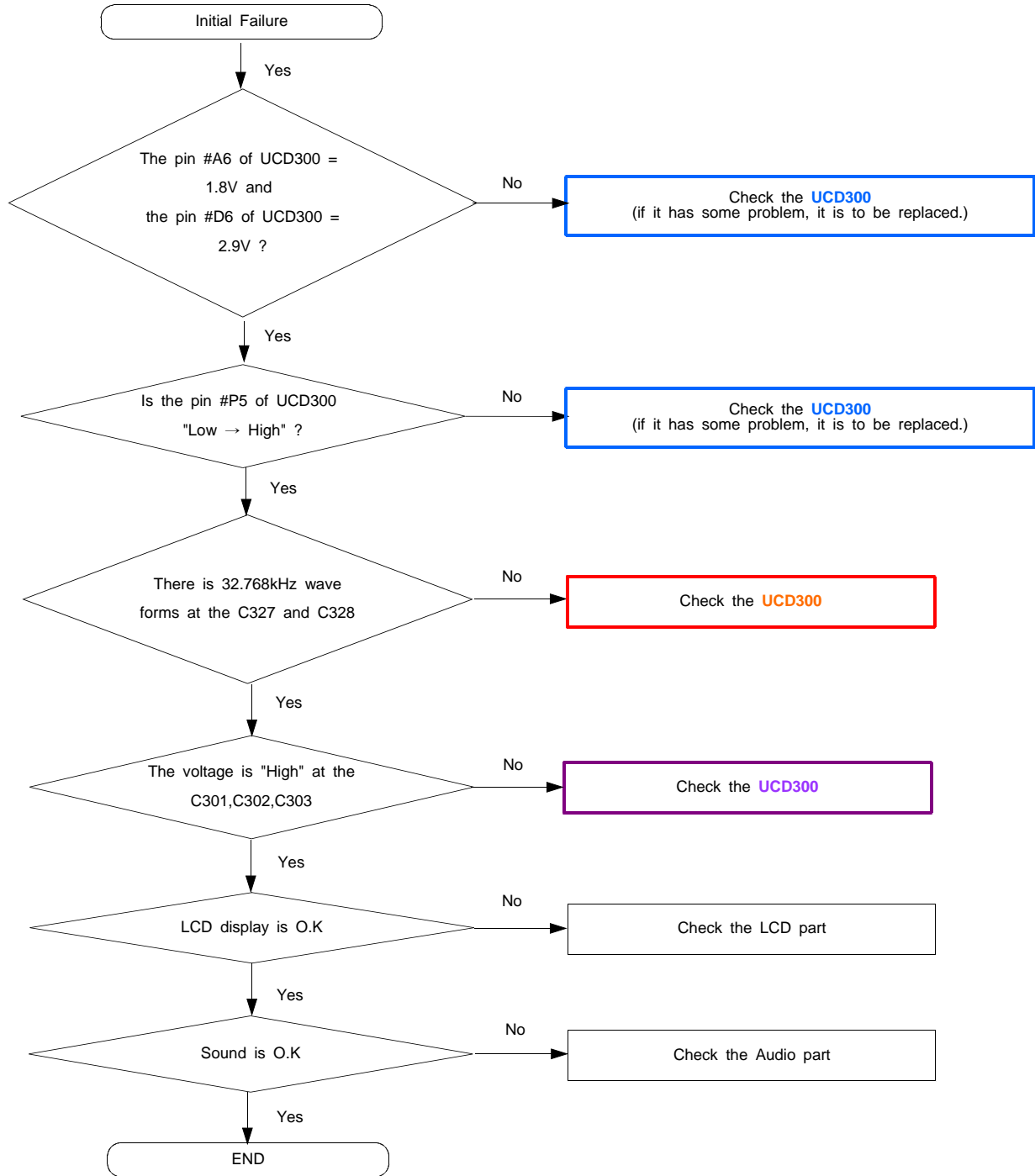
9. Flow Chart of Troubleshooting

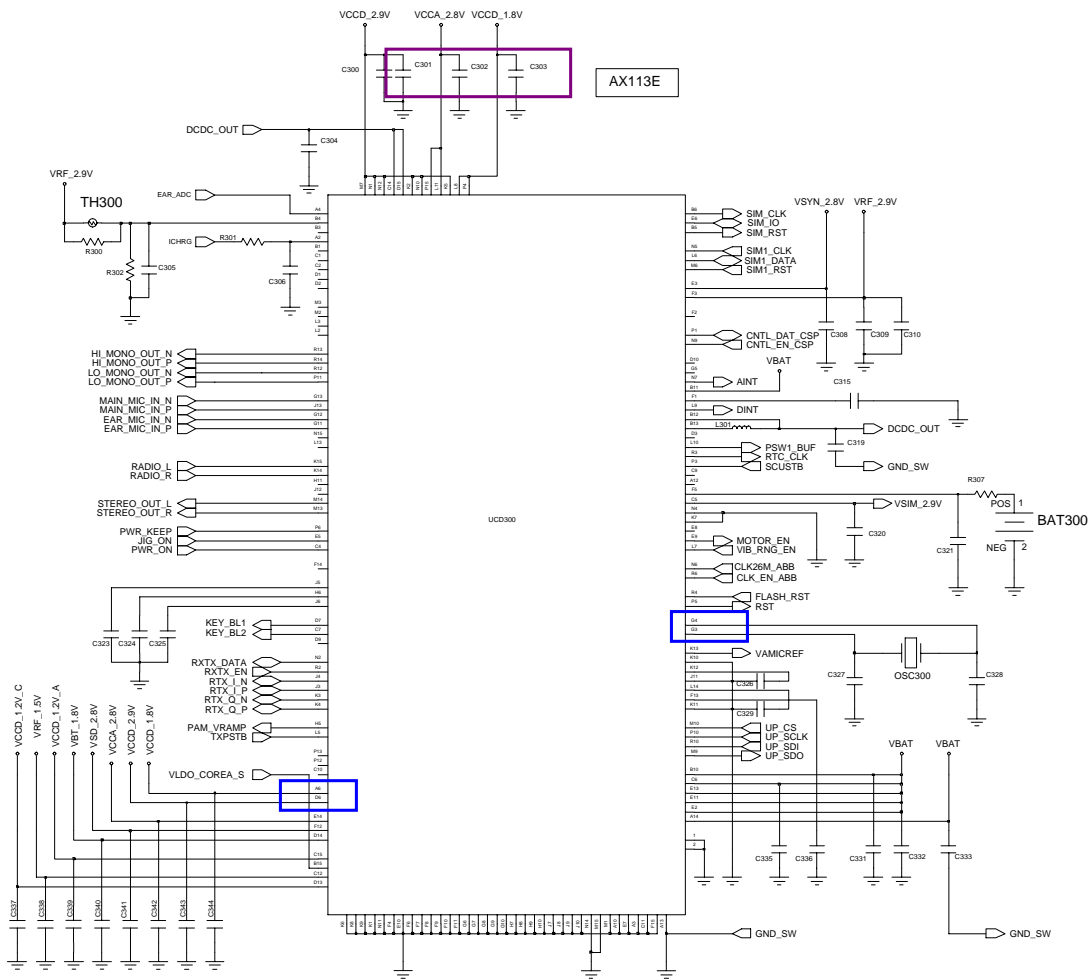
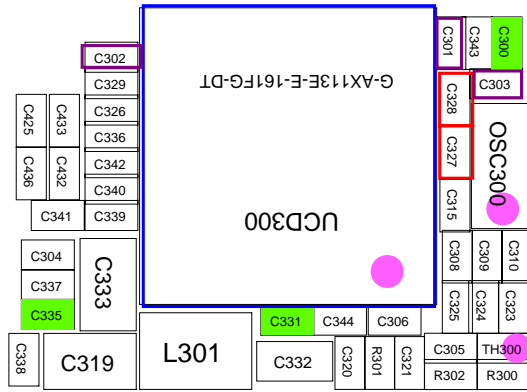
9-1-1. Power ON



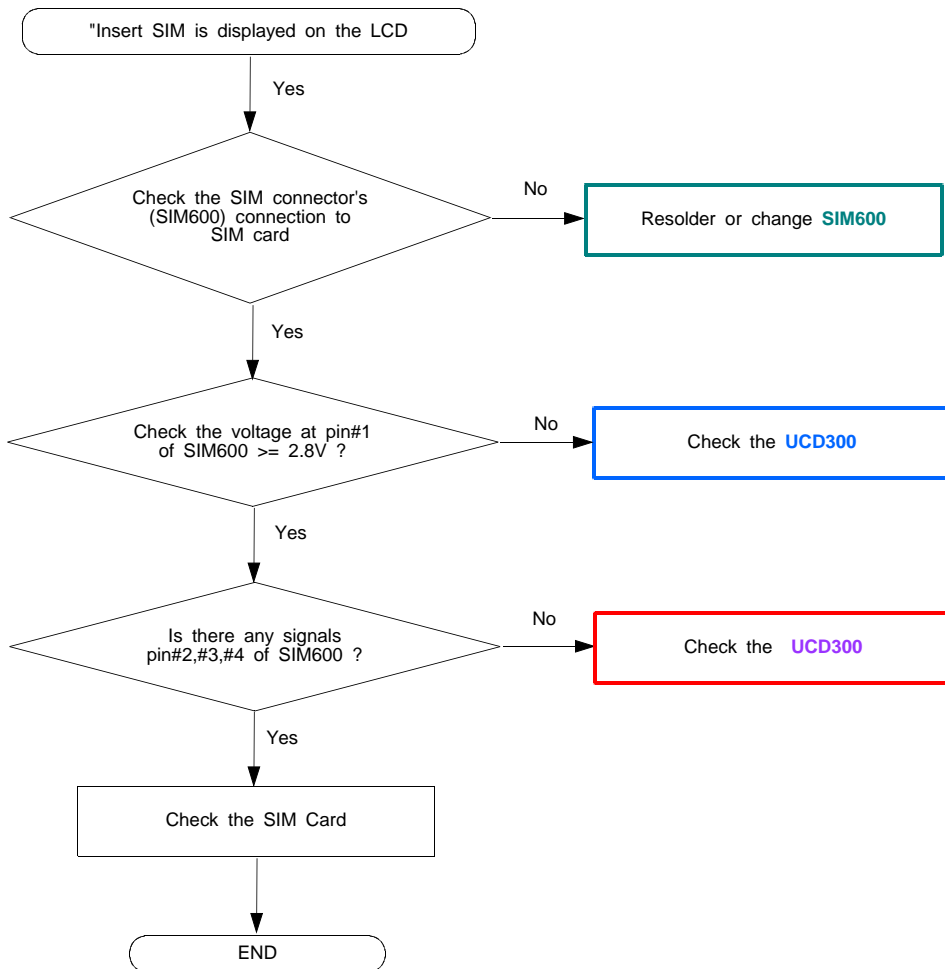


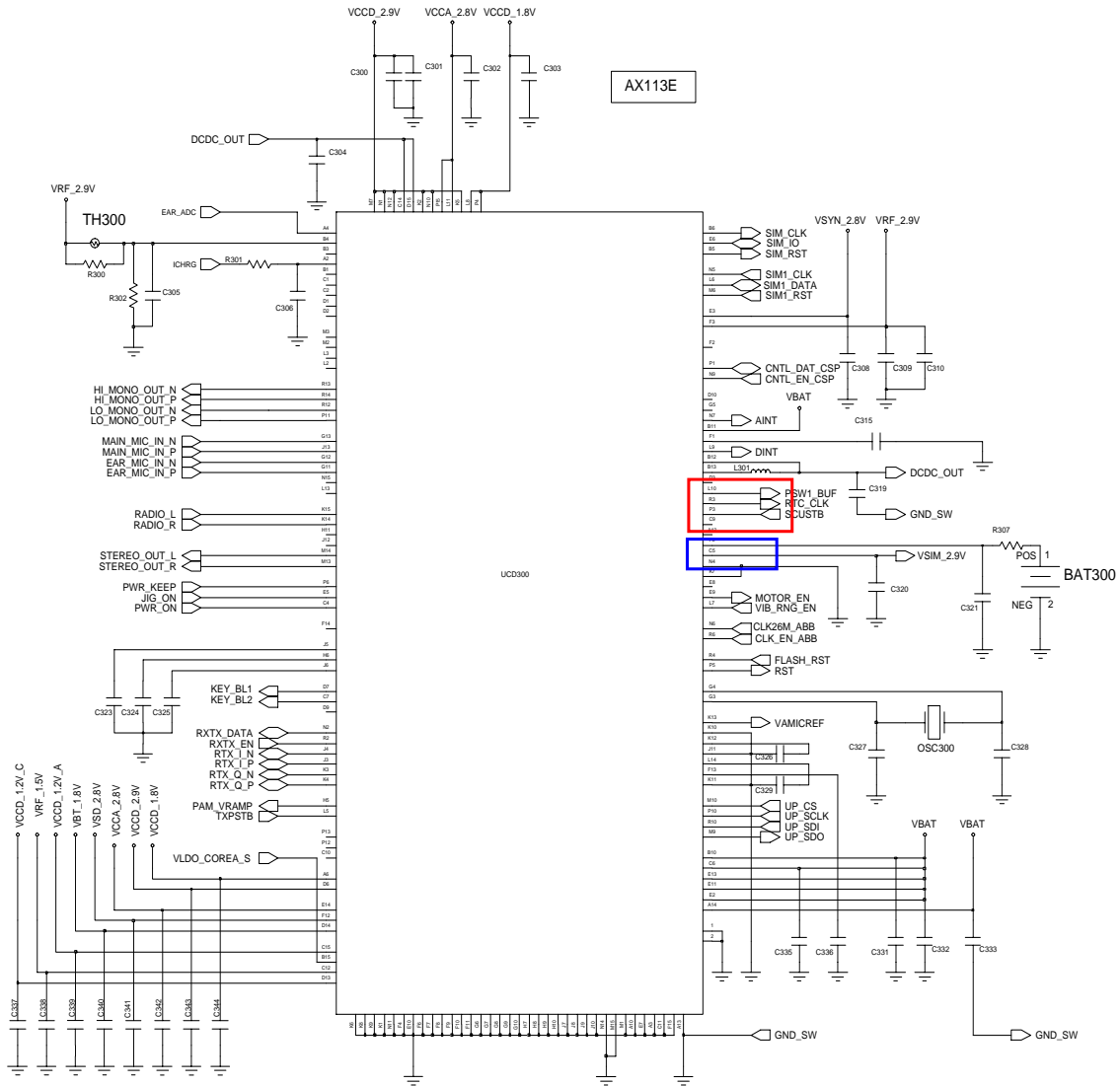
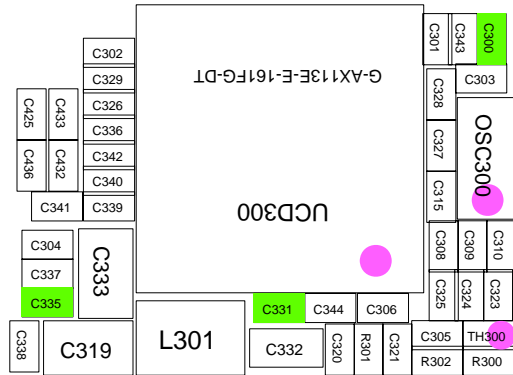
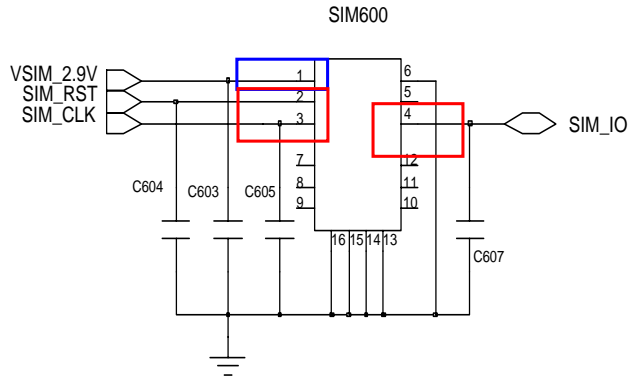
9-1-2. Initial



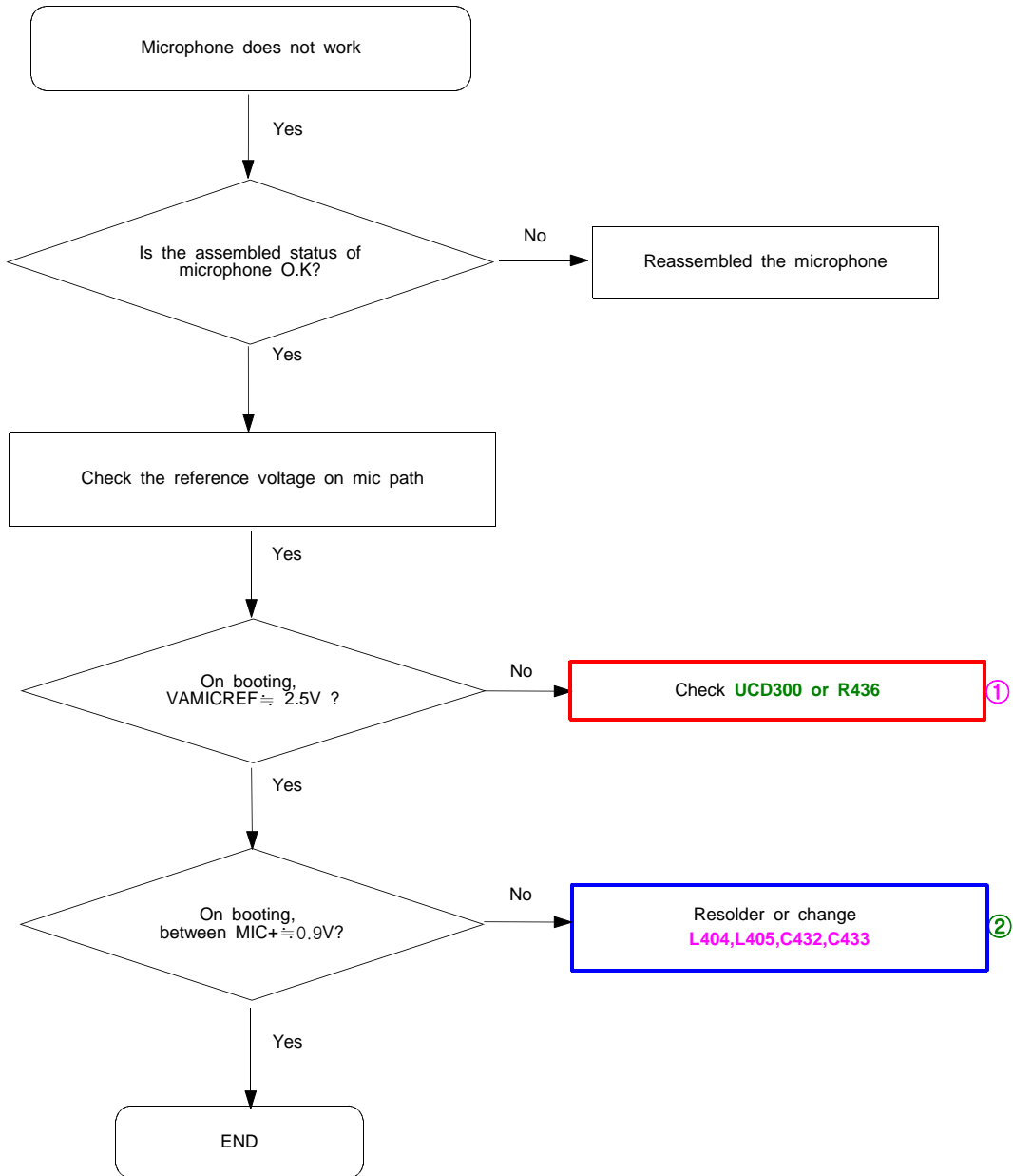


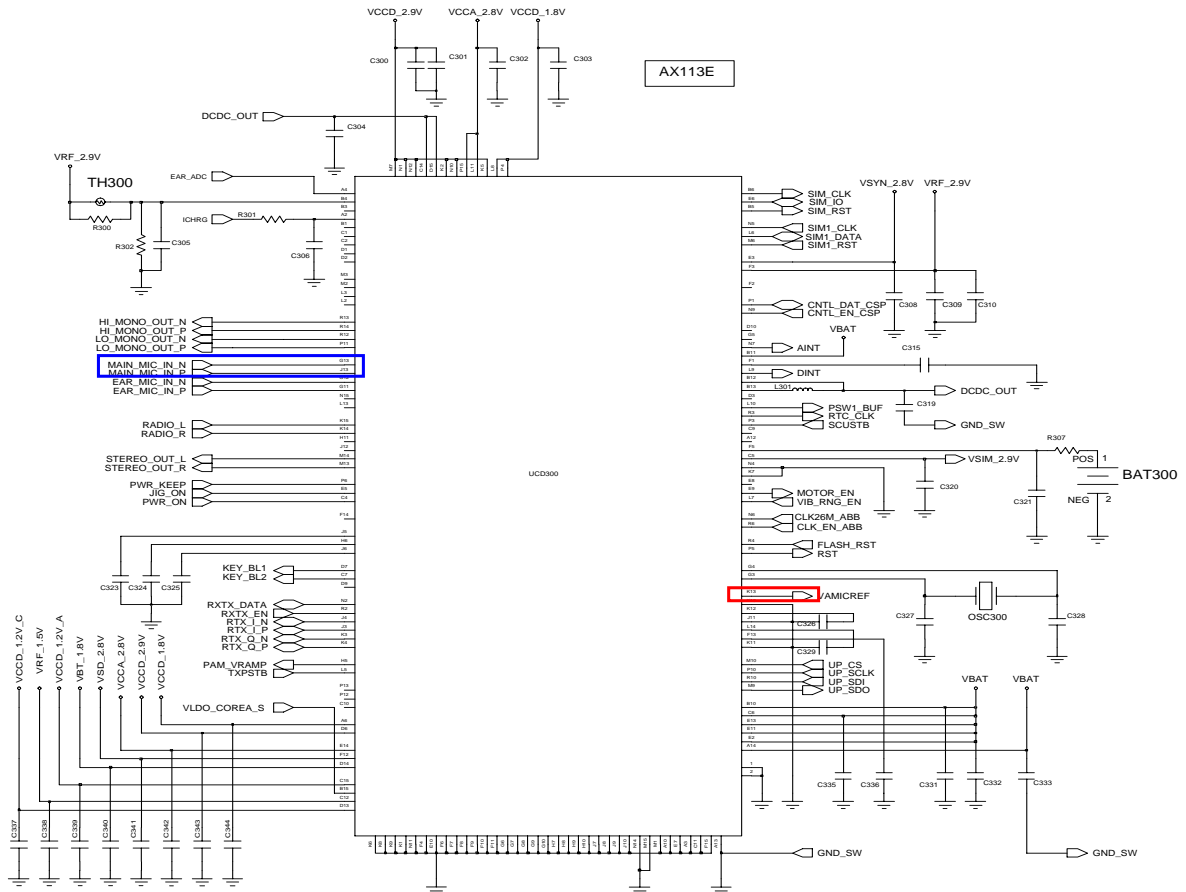
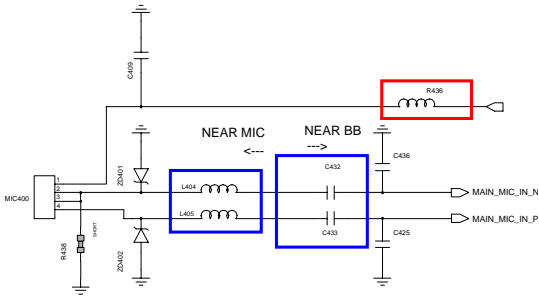
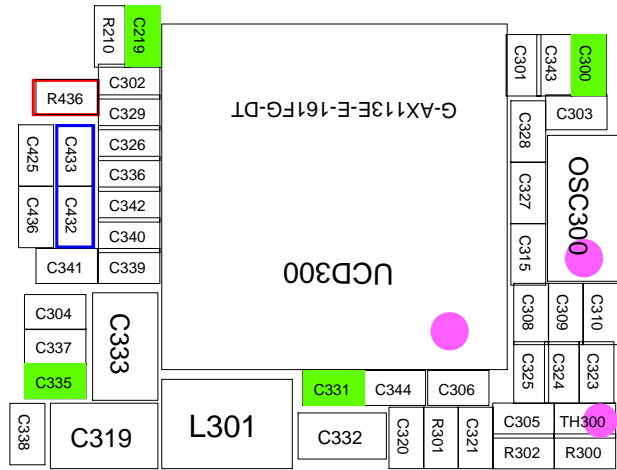
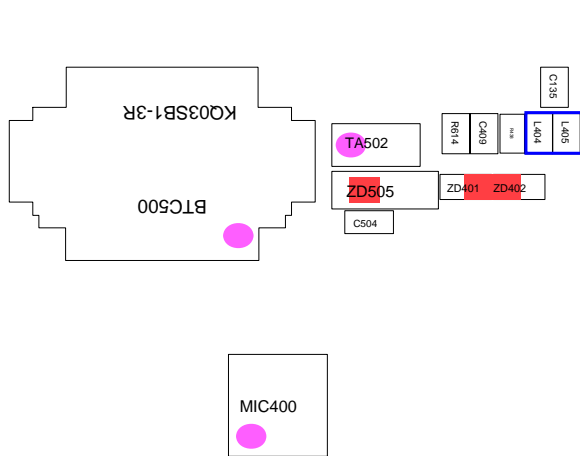
9-1-3. Sim Part



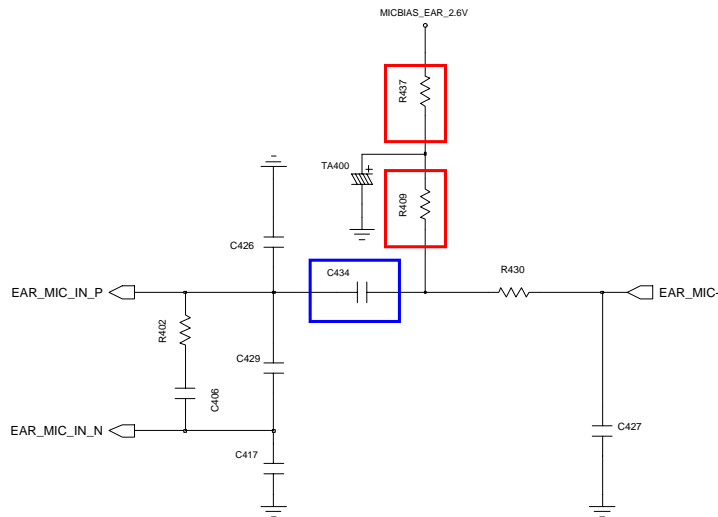
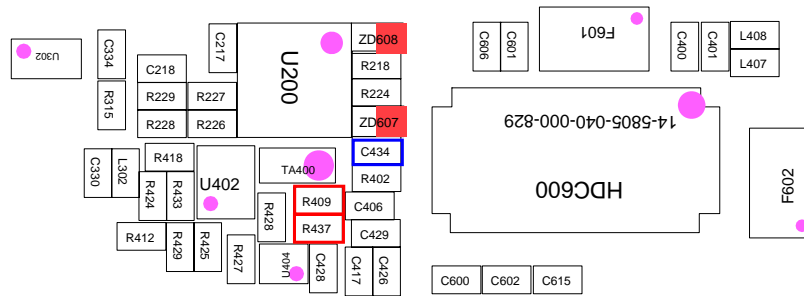
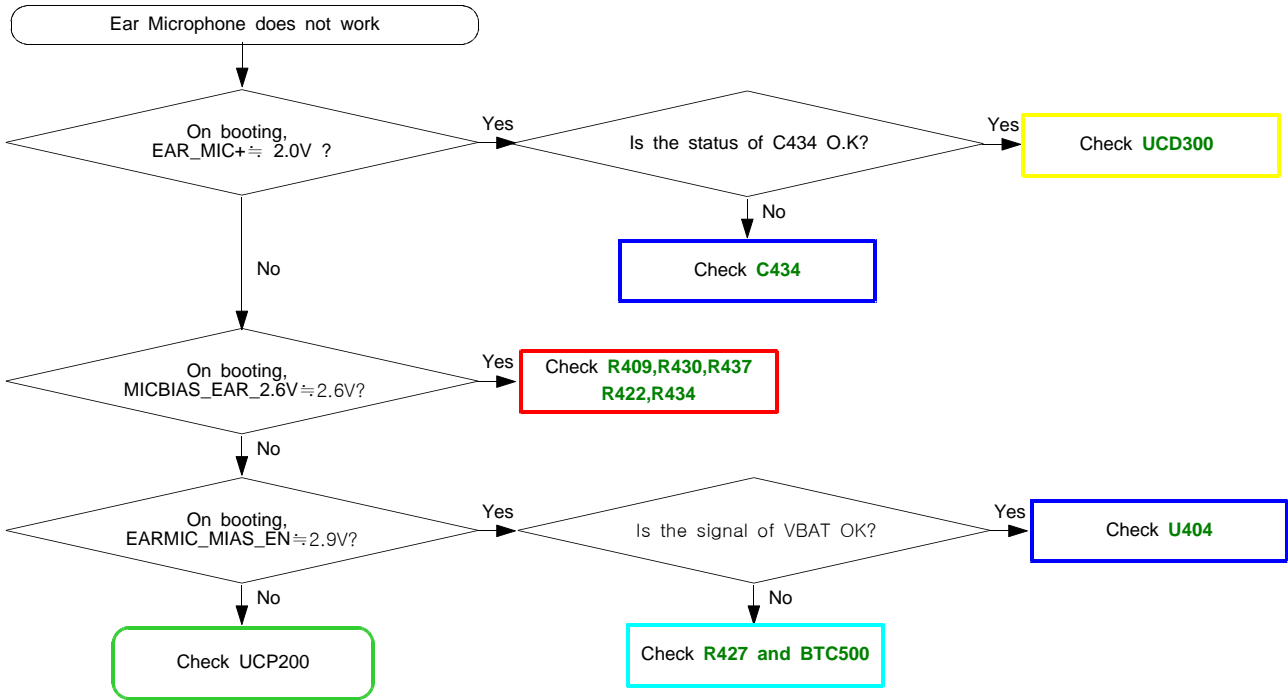


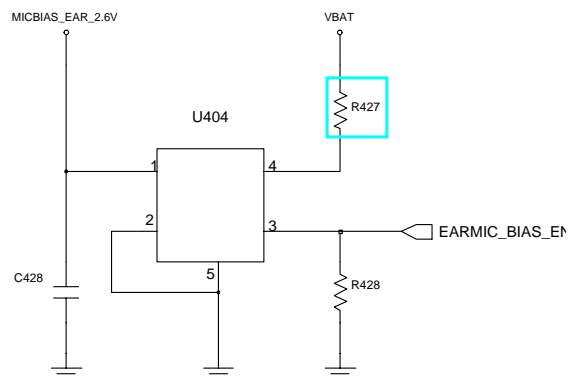
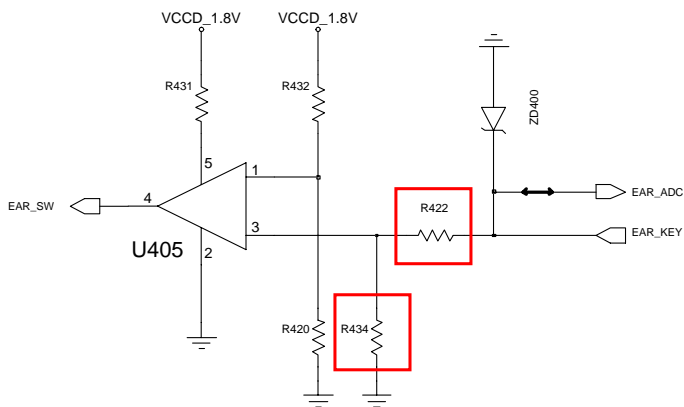
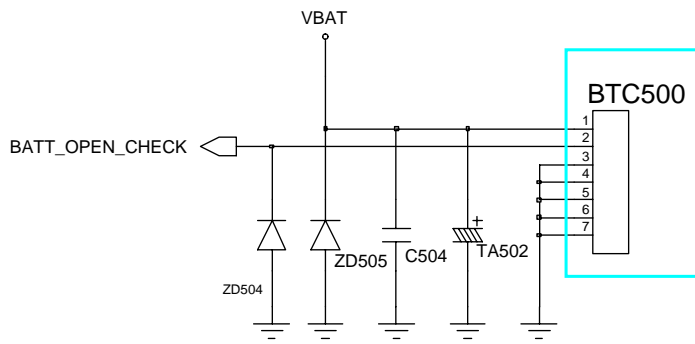
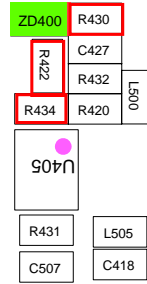
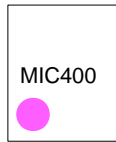
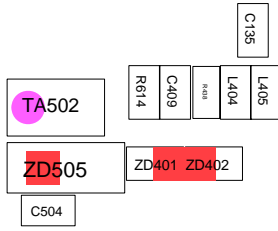
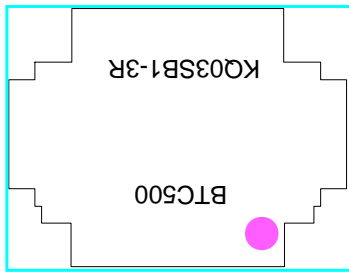
9-1-4. Microphone Part



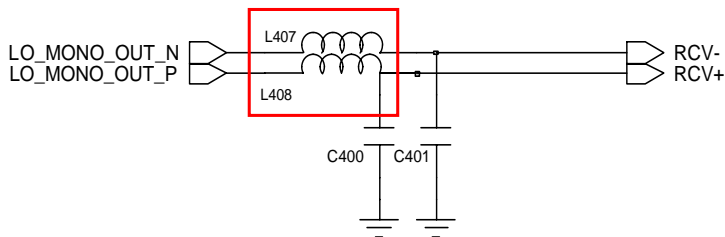
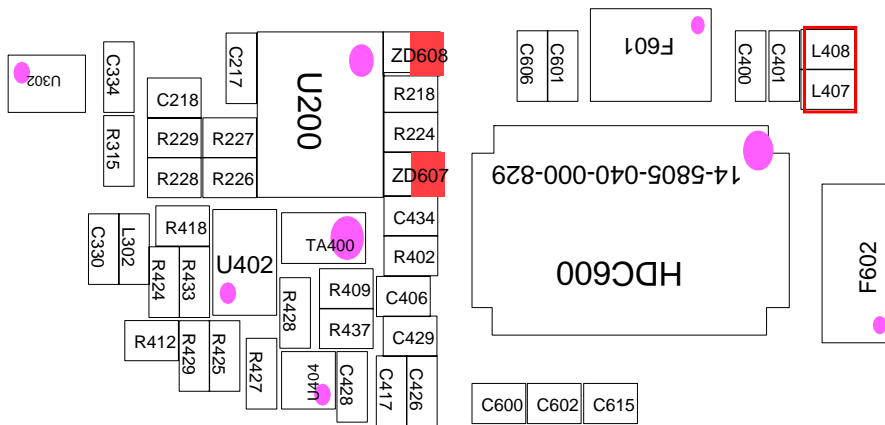
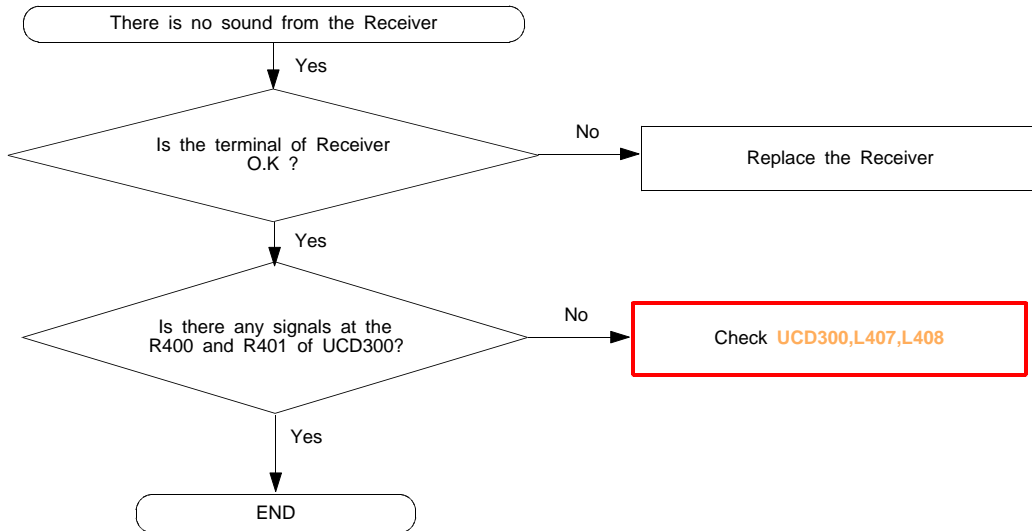


9-1-4. EAR Microphone Part

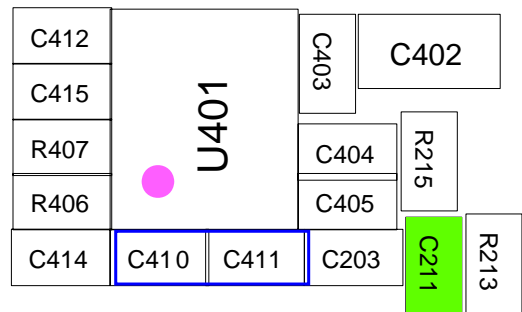
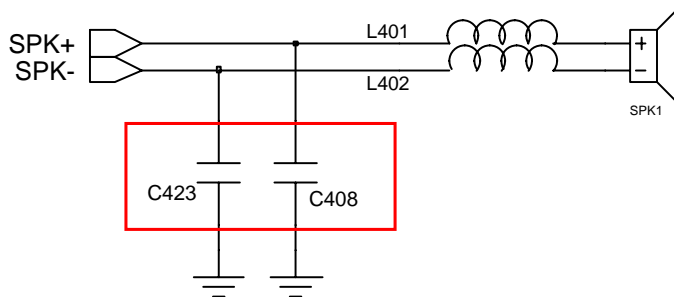
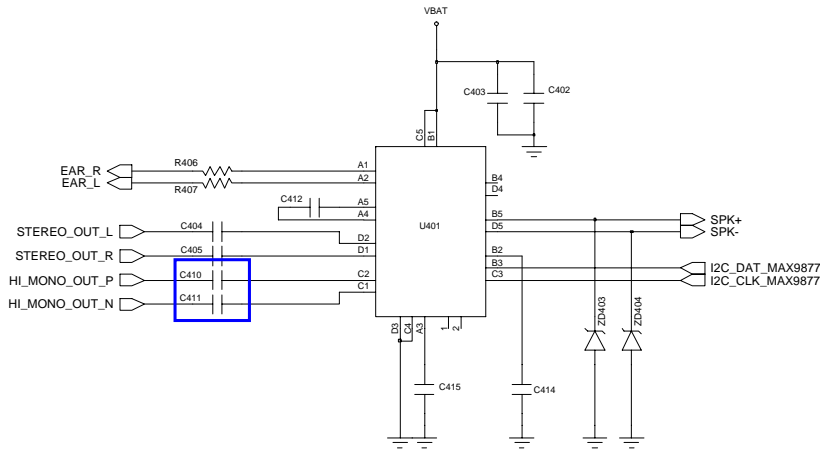
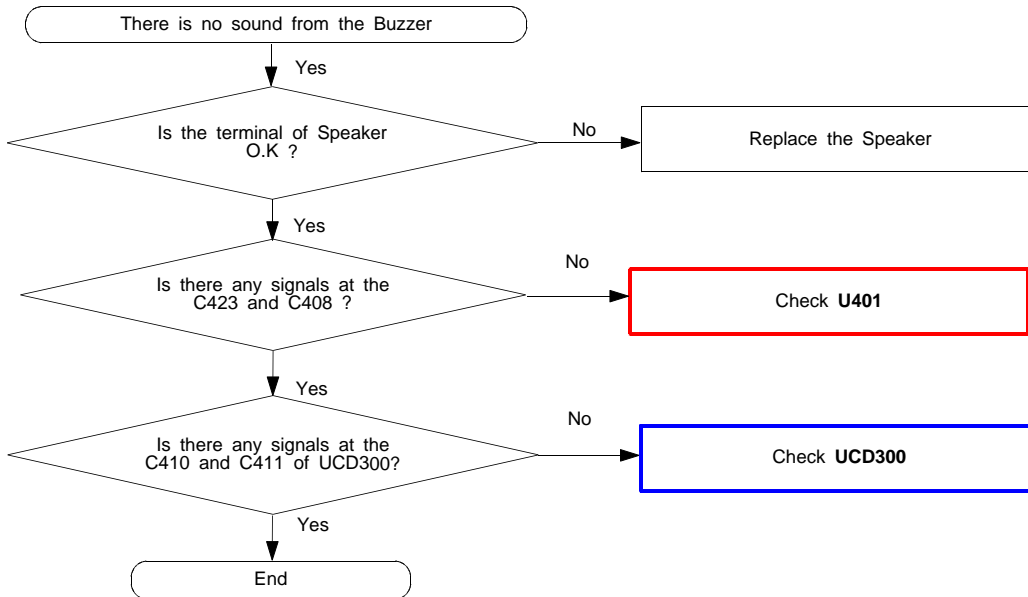




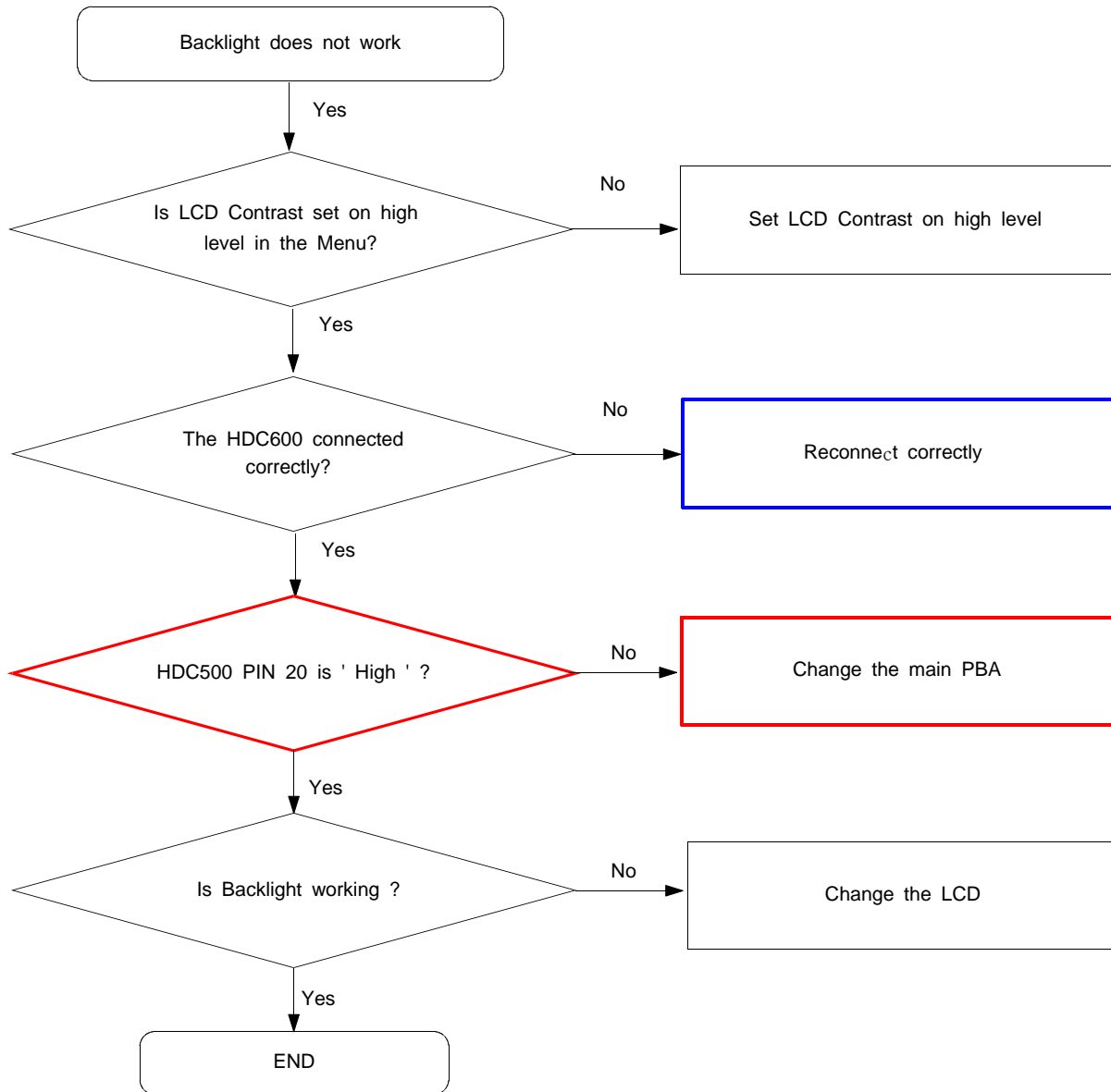
9-1-5. Receiver Part

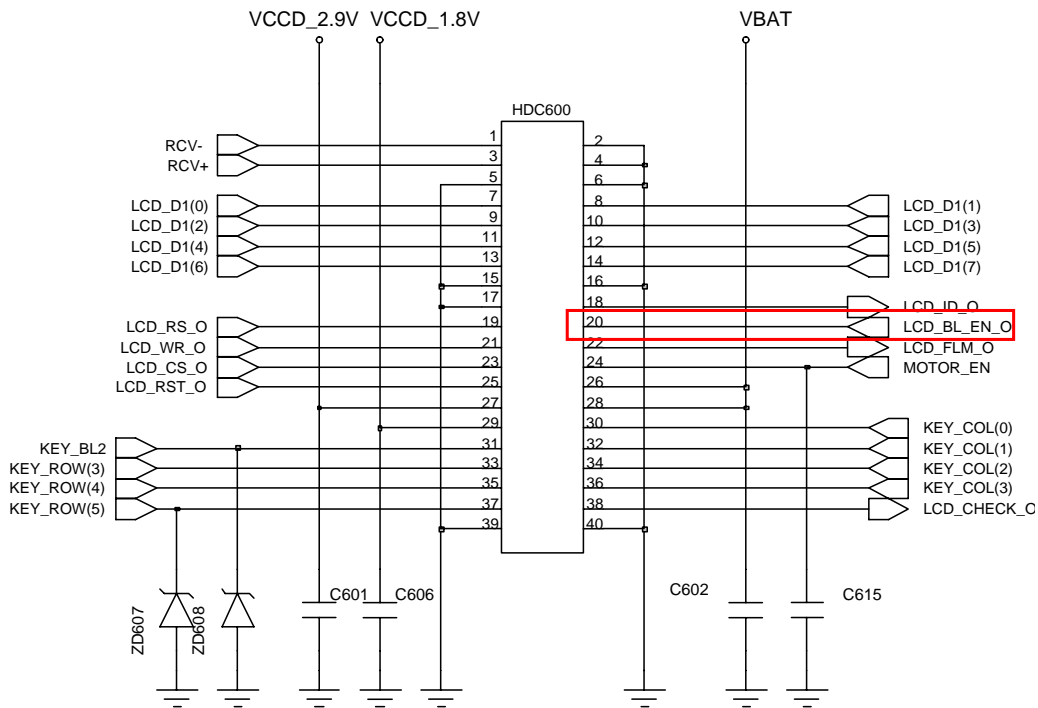
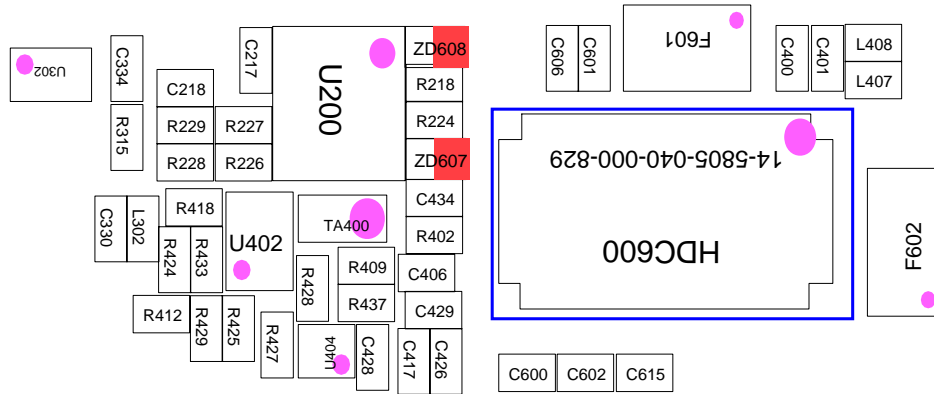


9-1-6. SPK Part

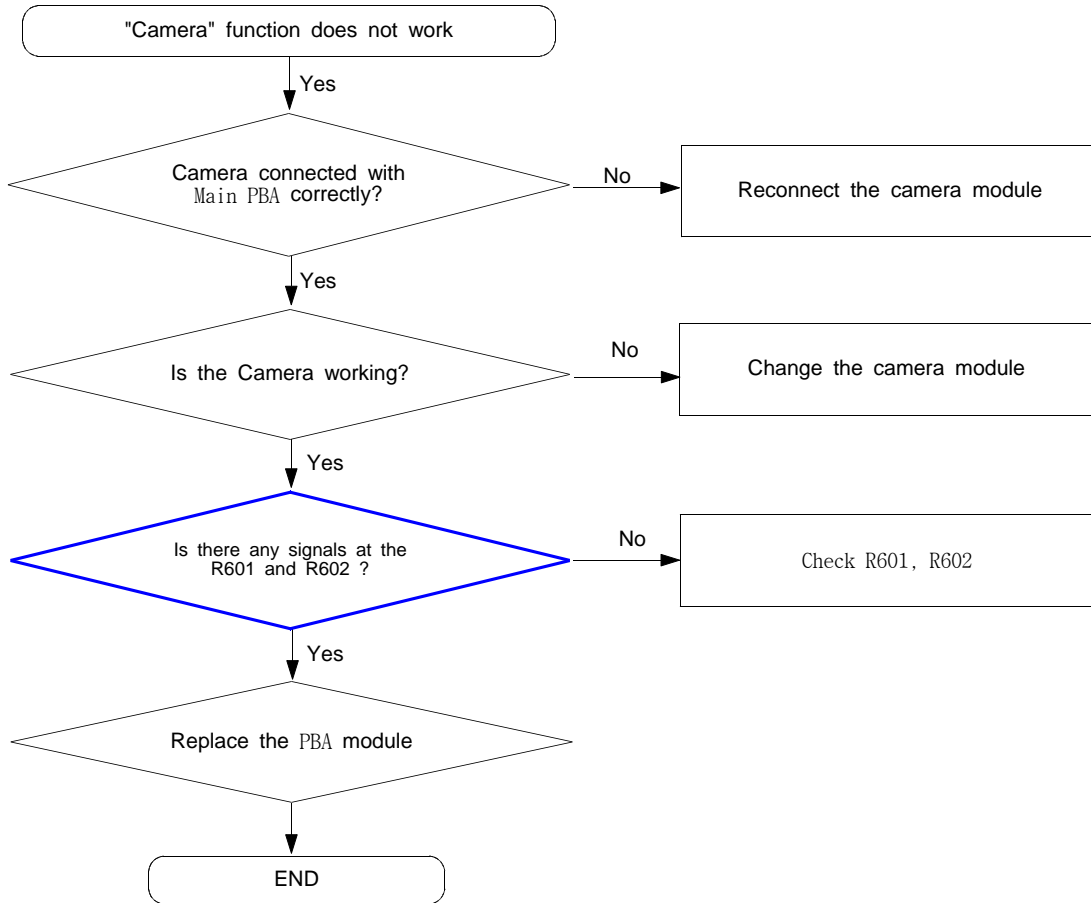


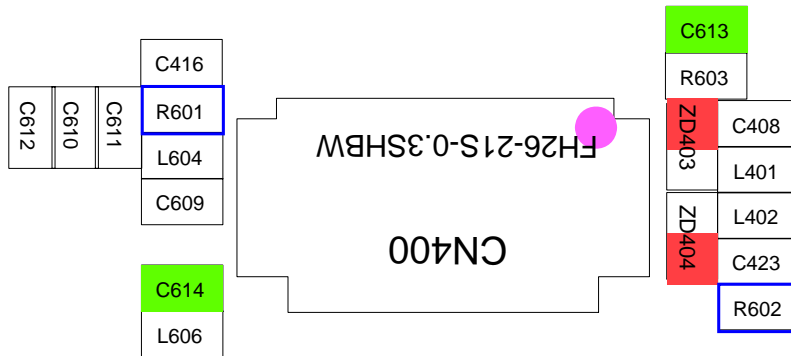
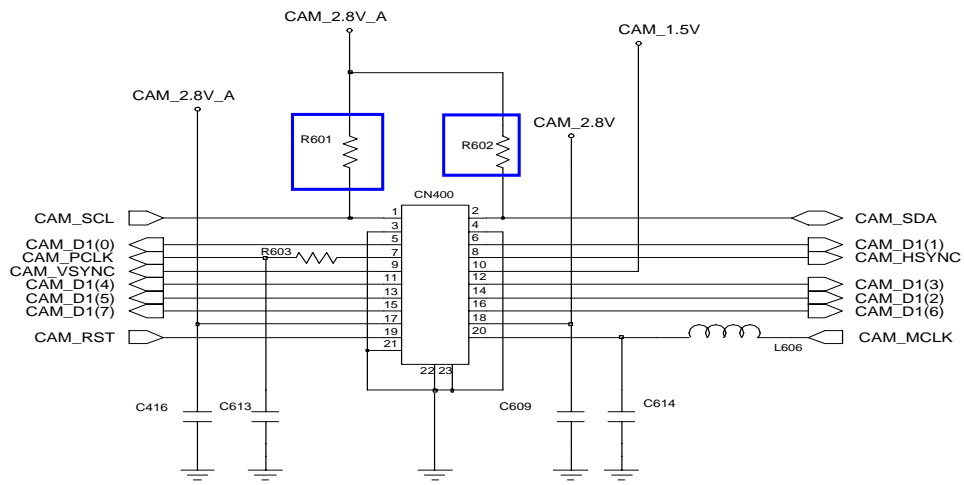
9-1-7. LCD Part





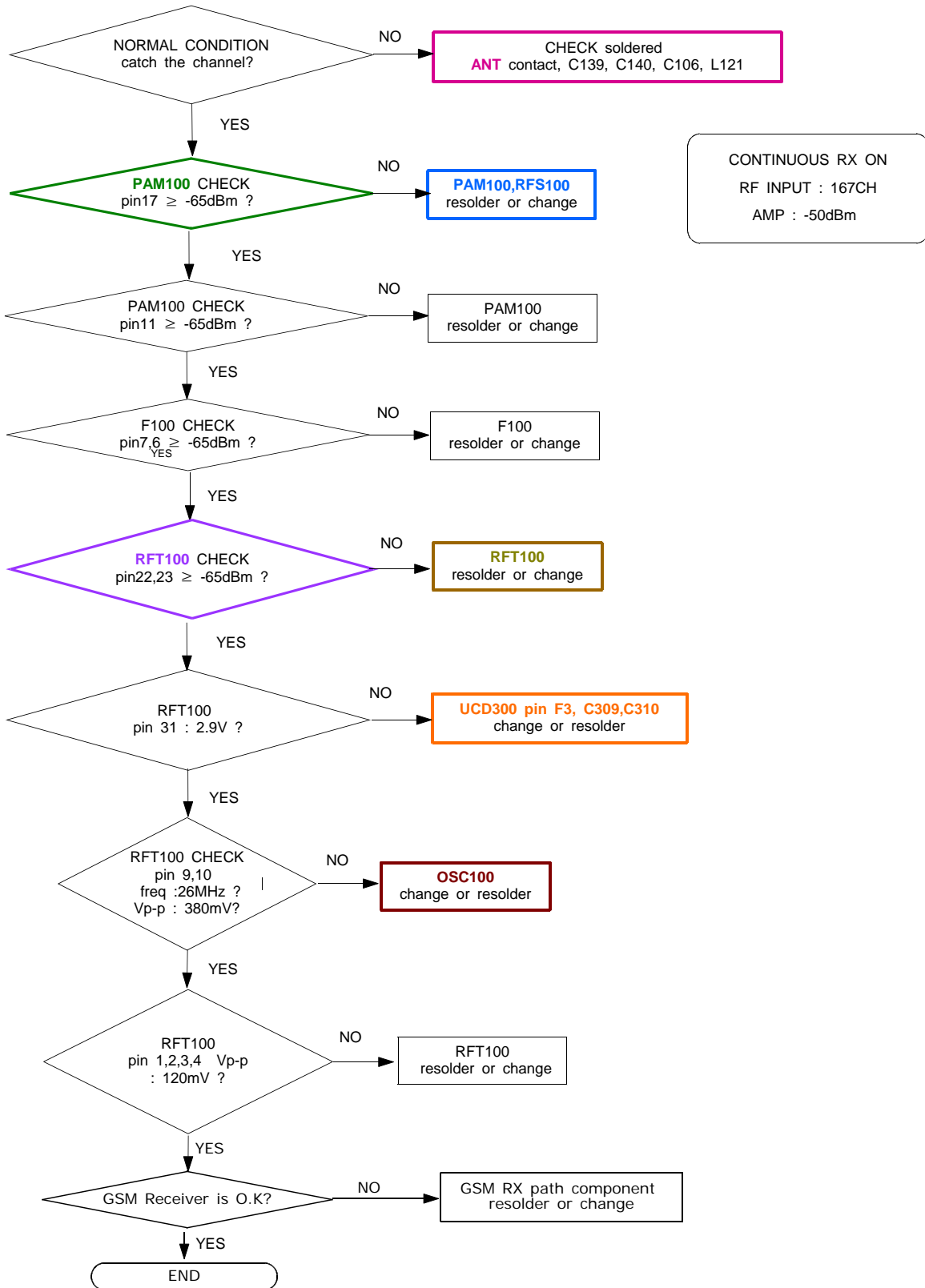
9-1-8. CAMERA Part



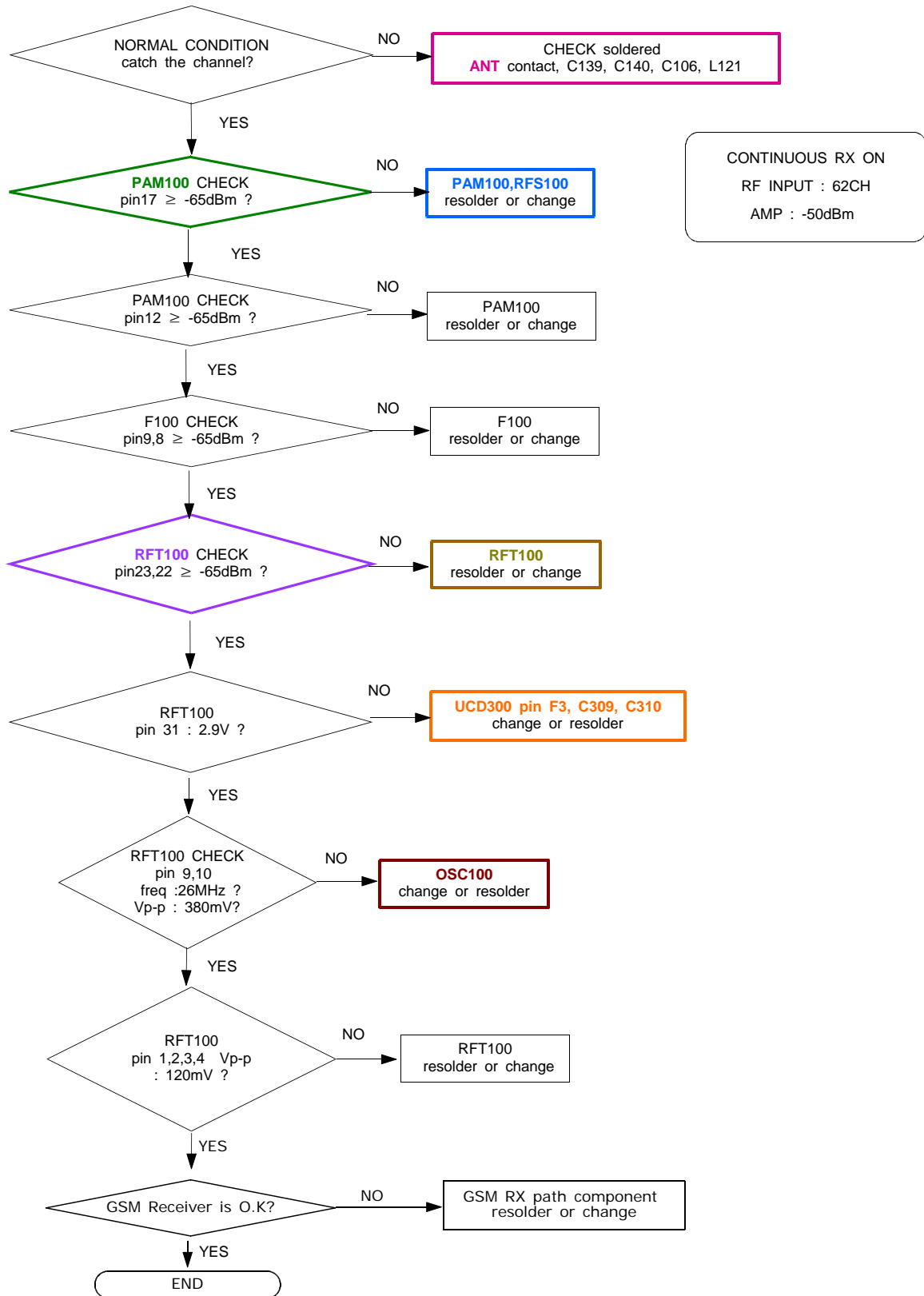


9-2.RF

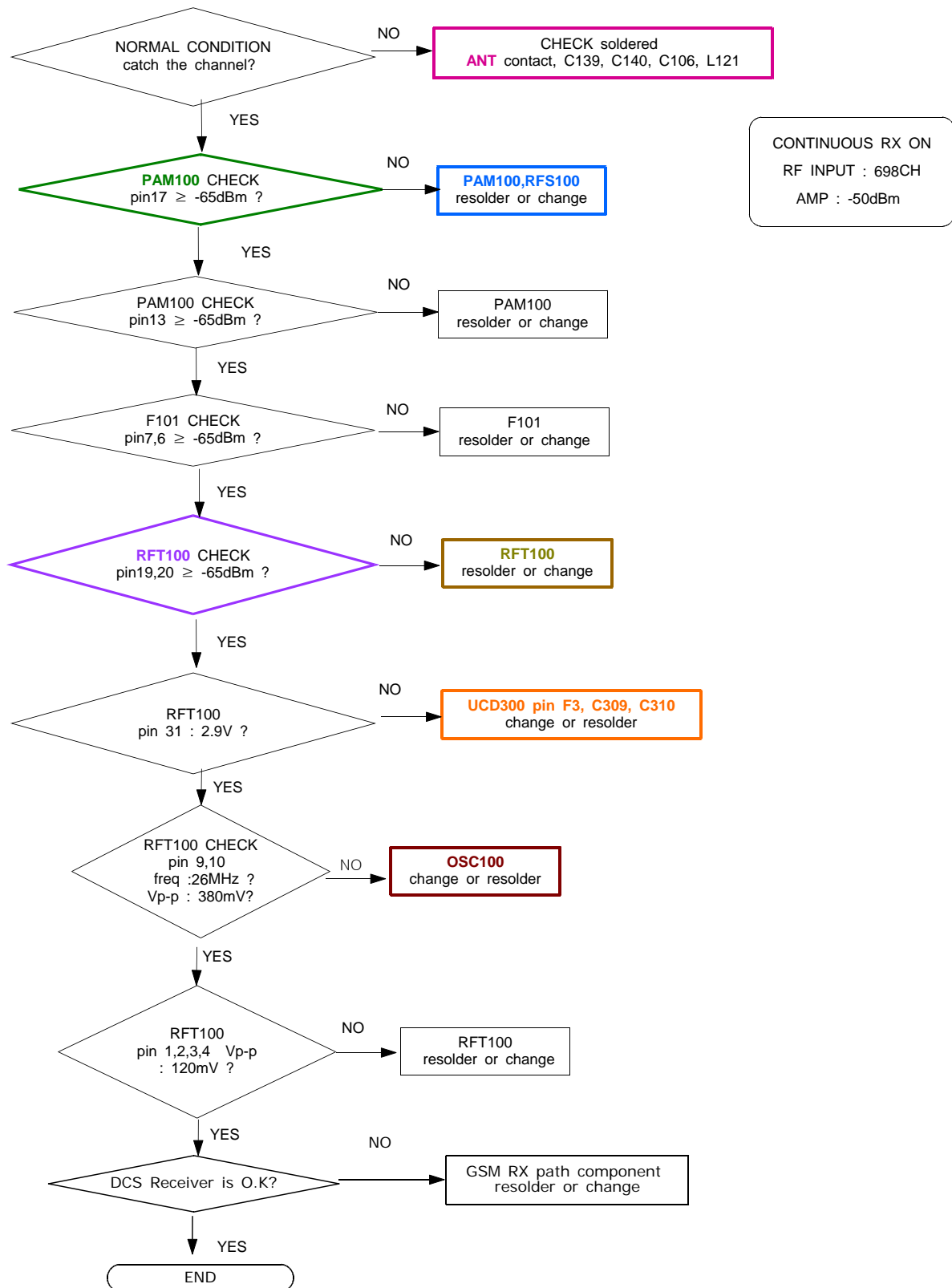
9-2-1. GSM850 RX



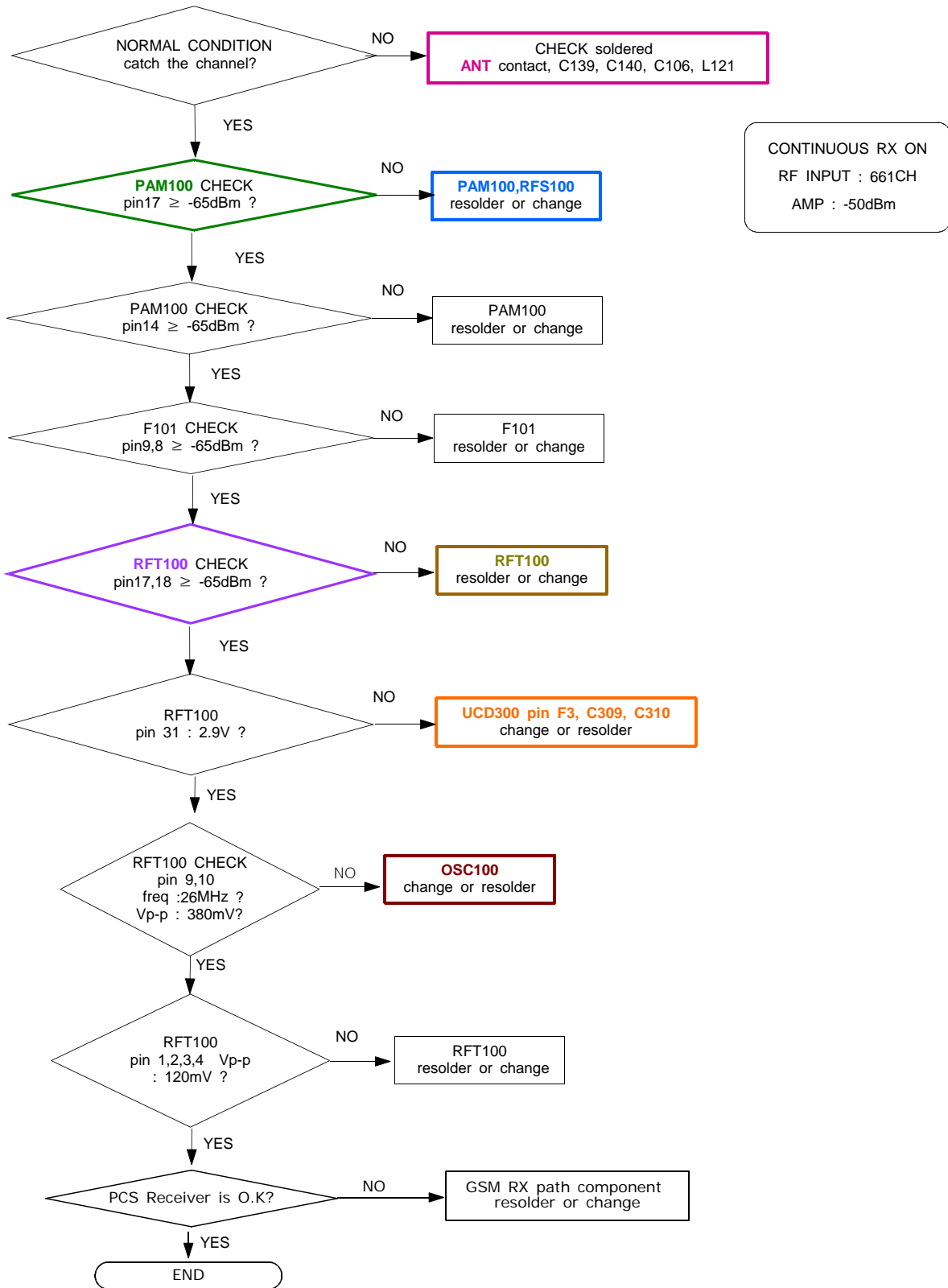
9-2-2. EGSM RX



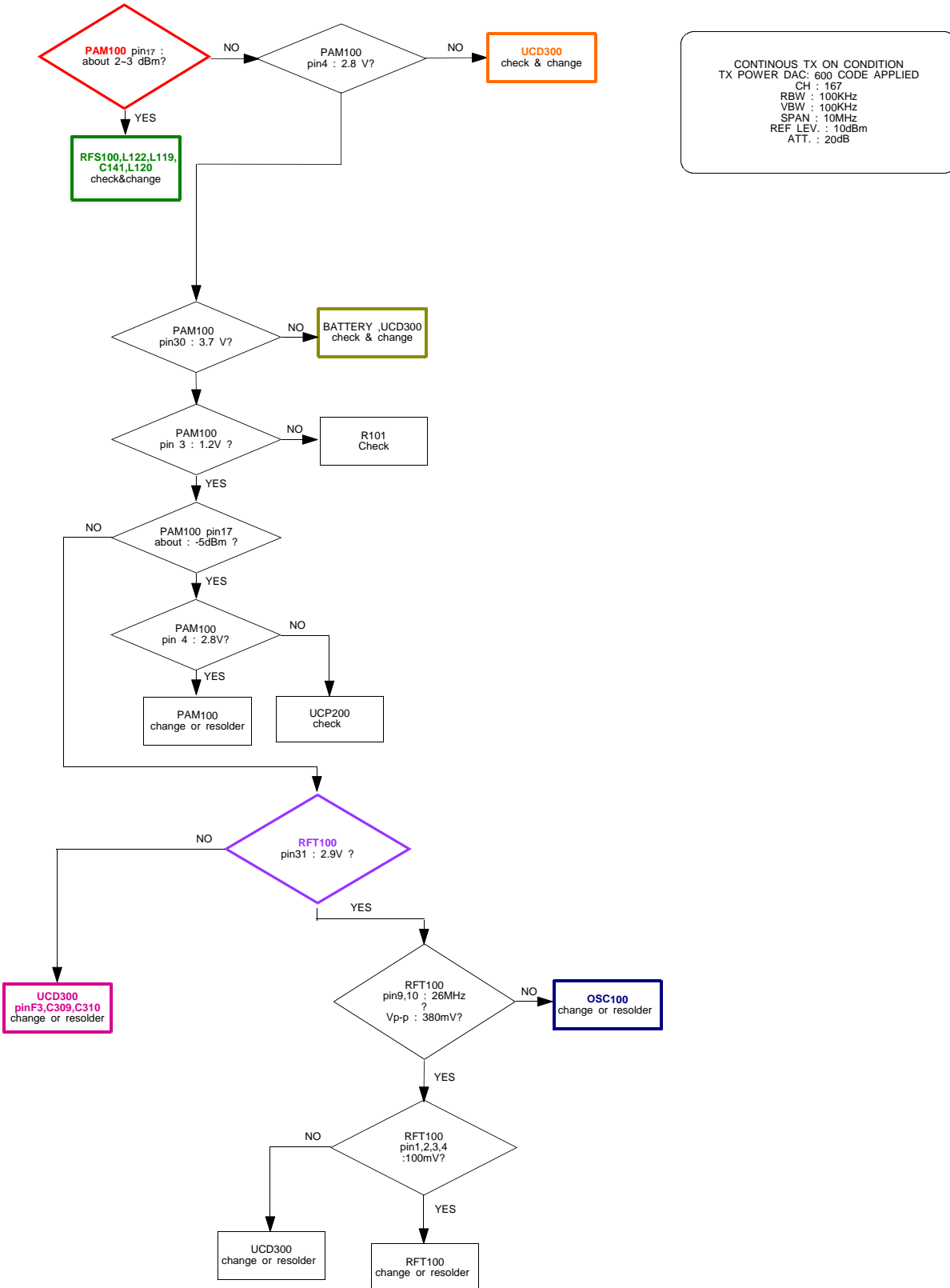
9-2-3. DCS RX



9-2-4. PCS RX

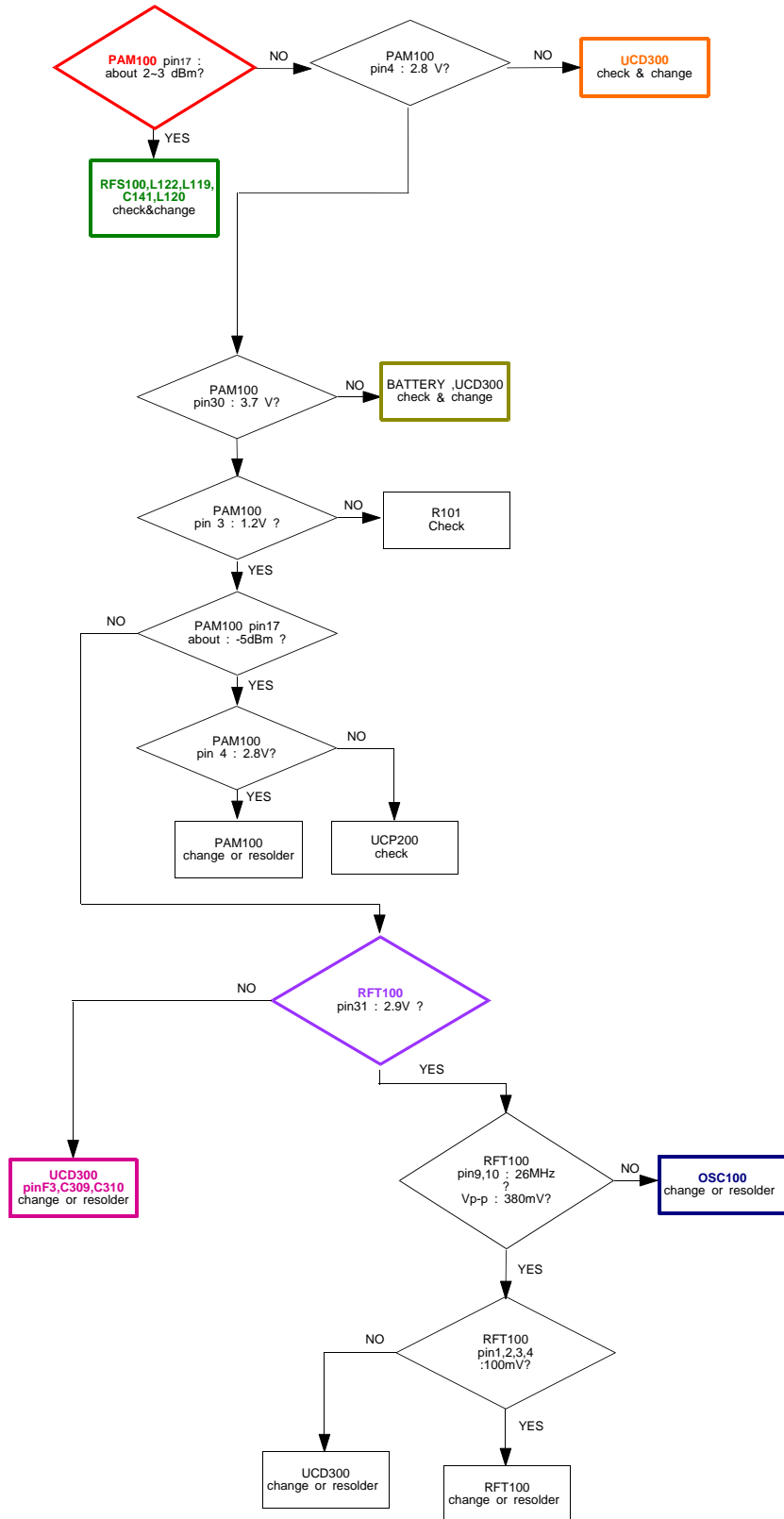


9-2-5. GSM850 TX



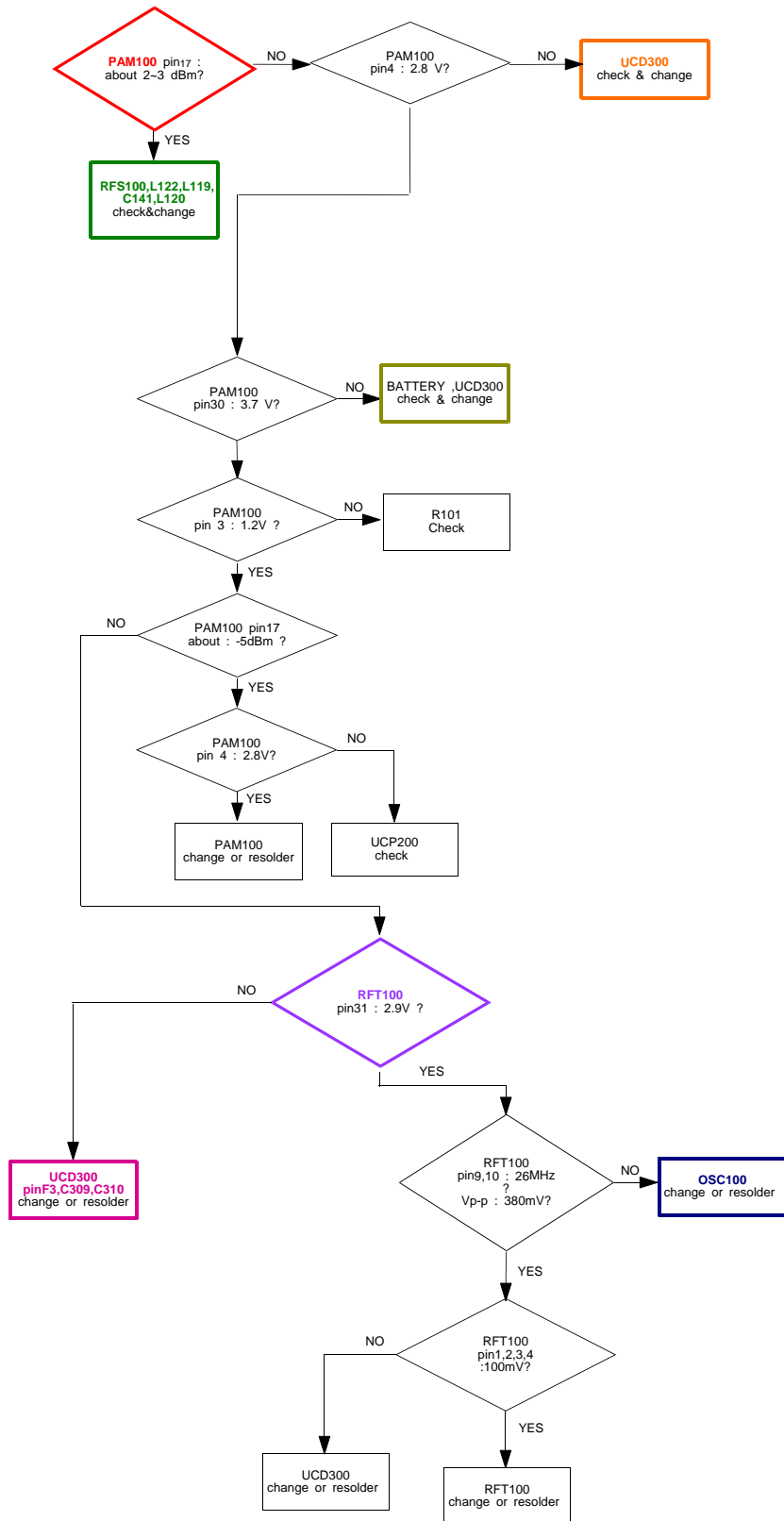
CONTINUOUS TX ON CONDITION
 TX POWER DAC: 600 CODE APPLIED
 CH : 167
 RBW : 100KHz
 VBW : 100KHz
 SPAN : 10MHz
 REF LEV. : 10dBm
 ATT. : 20dB

9-2-6. EGSM TX



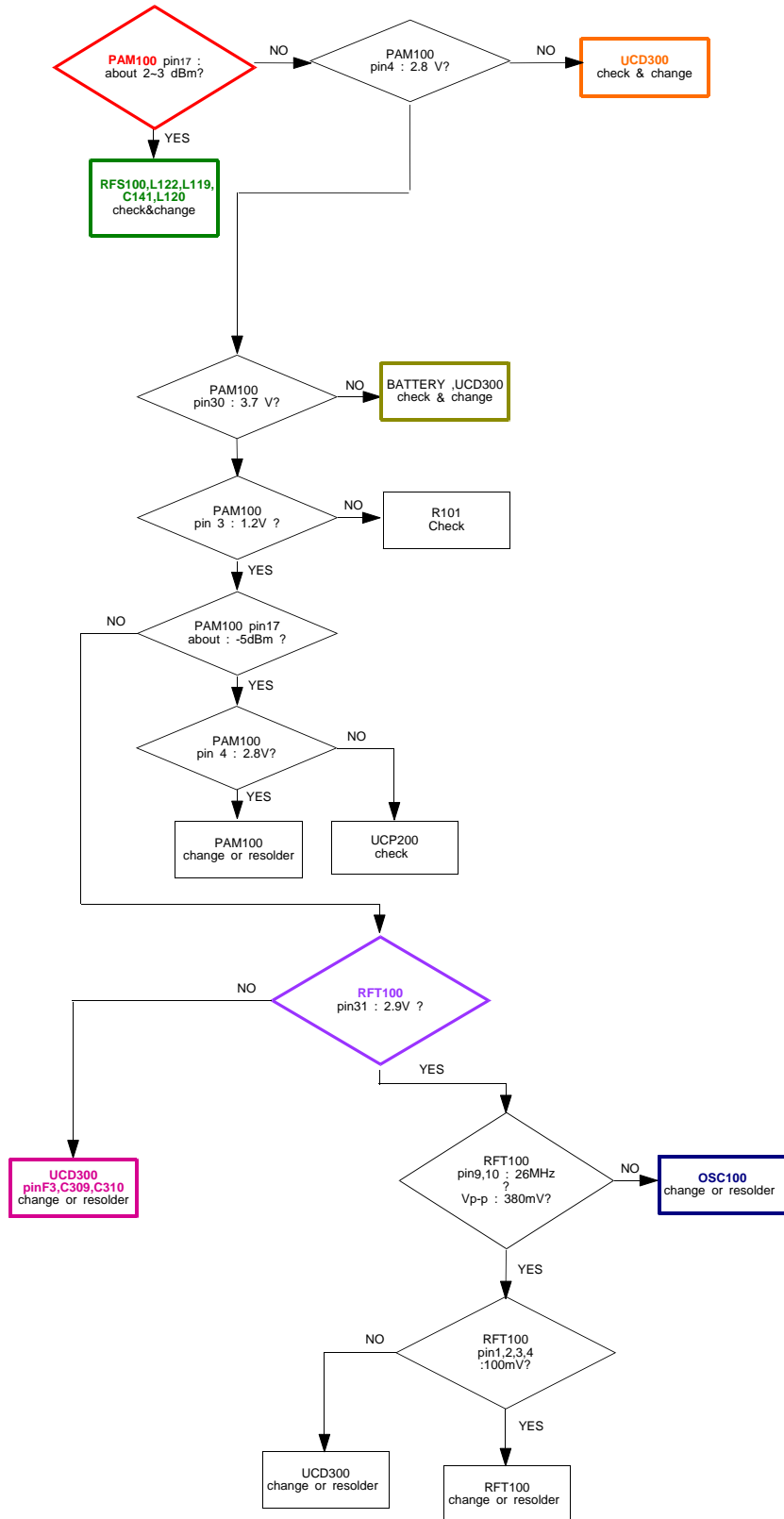
CONTINUOUS TX ON CONDITION
 TX POWER DAC: 600 CODE APPLIED
 CH : 62
 RBW : 100KHz
 VBW : 100KHz
 SPAN : 10MHz
 REF LEV. : 10dBm
 ATT. : 20dB

9-2-7. DCS TX



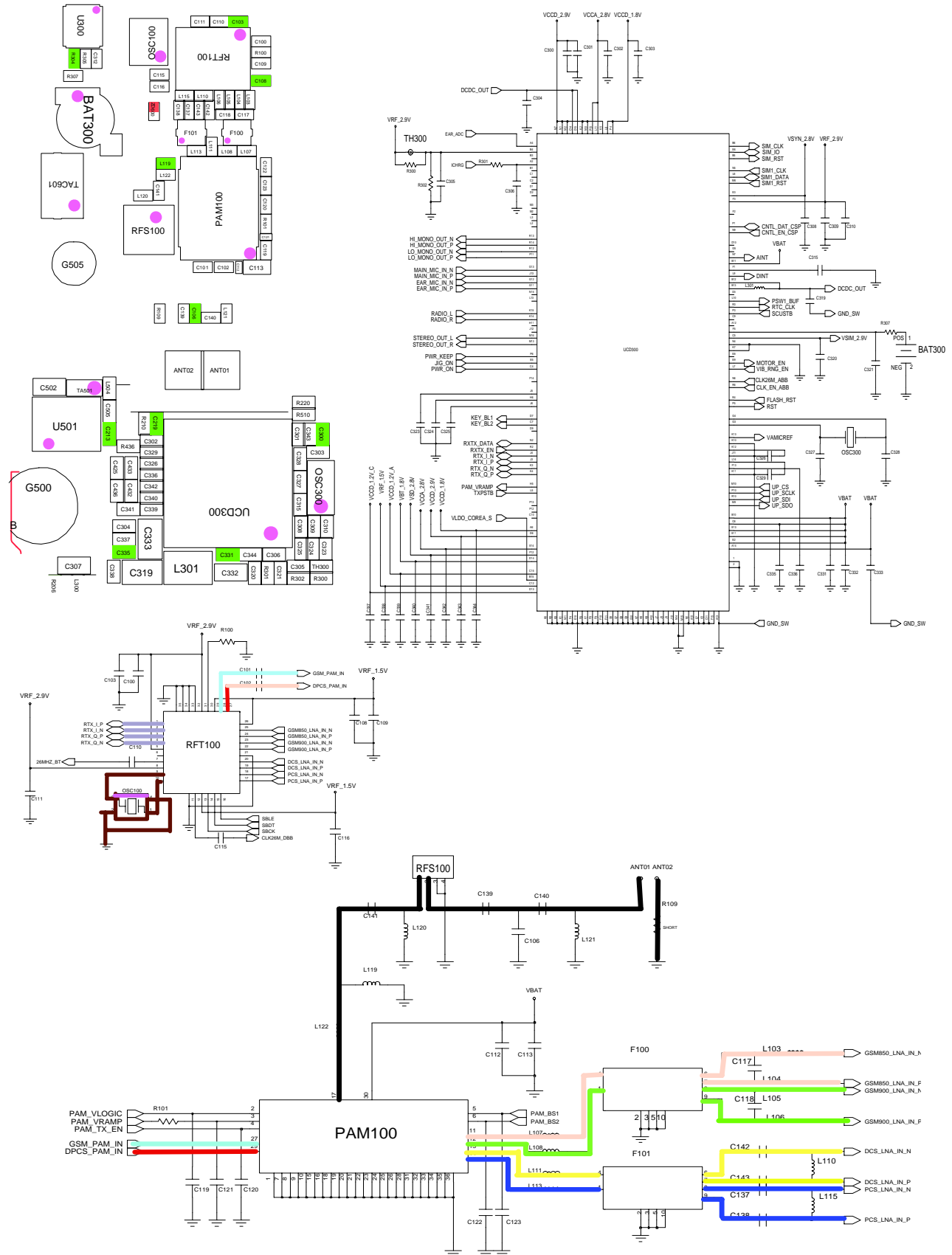
CONTINUOUS TX ON CONDITION
 CH : 698CH(DCS)
 TX POWER CODE: 520 CODE Applied
 RBW : 100KHz
 VBW : 100KHz
 SPAN : 10MHz
 REF LEV. : 10dBm
 ATT. : 20dB

9-2-8. PCS TX

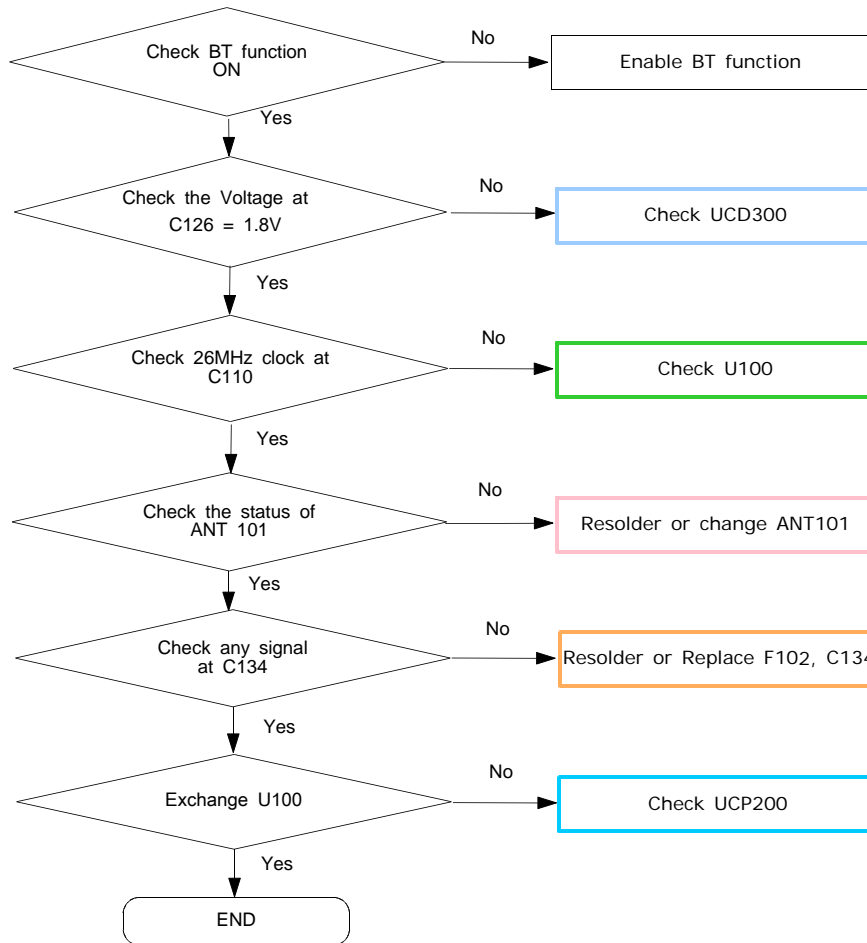


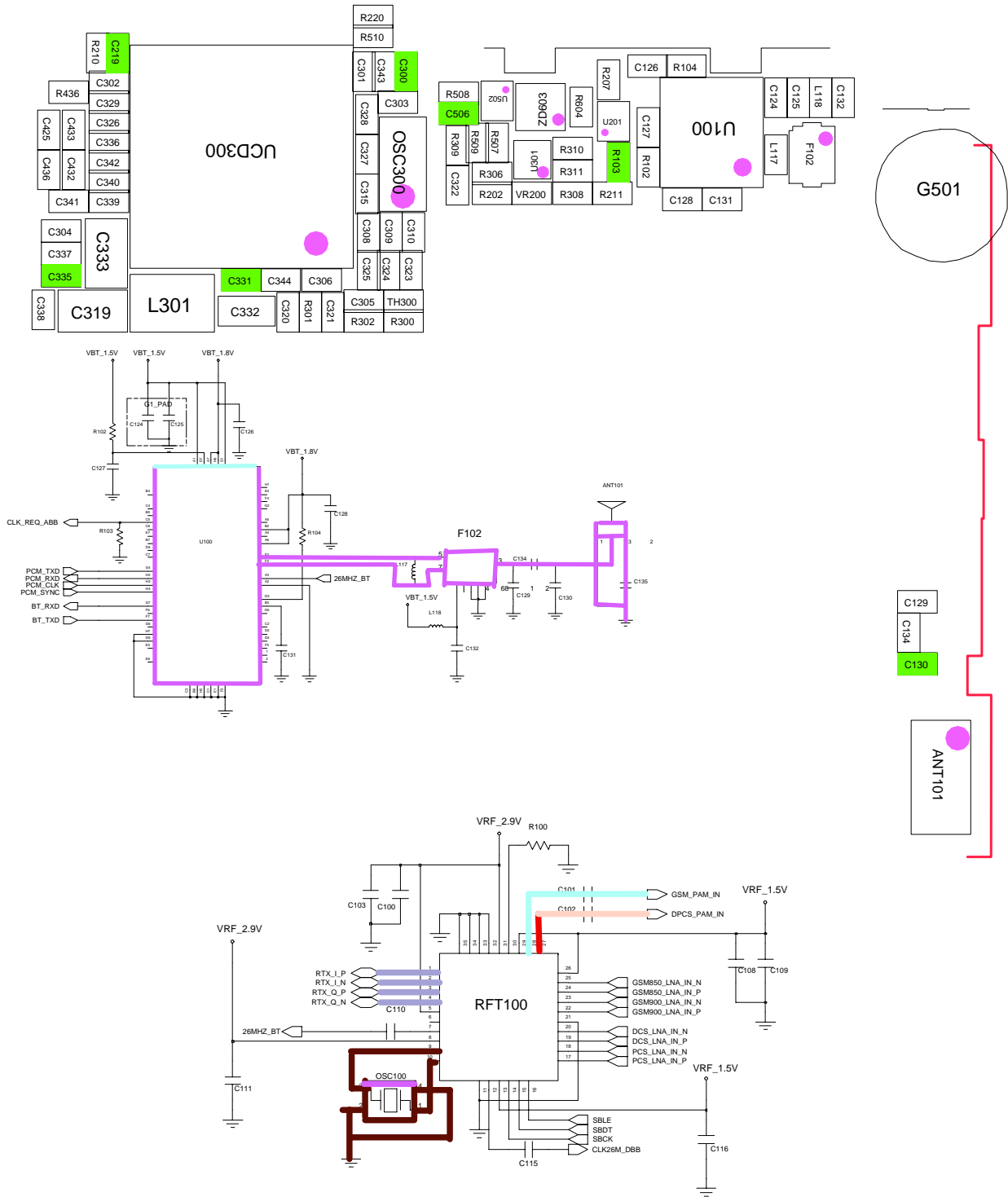
CONTINUOUS TX ON CONDITION
 CH : 661CH(PCS)
 TX POWER CODE: 520 CODE Applied
 RBW : 100KHz
 VBW : 100KHz
 SPAN : 10MHz
 REF LEV. : 10dBm
 ATT. : 20dB

Flow Chart of Troubleshooting

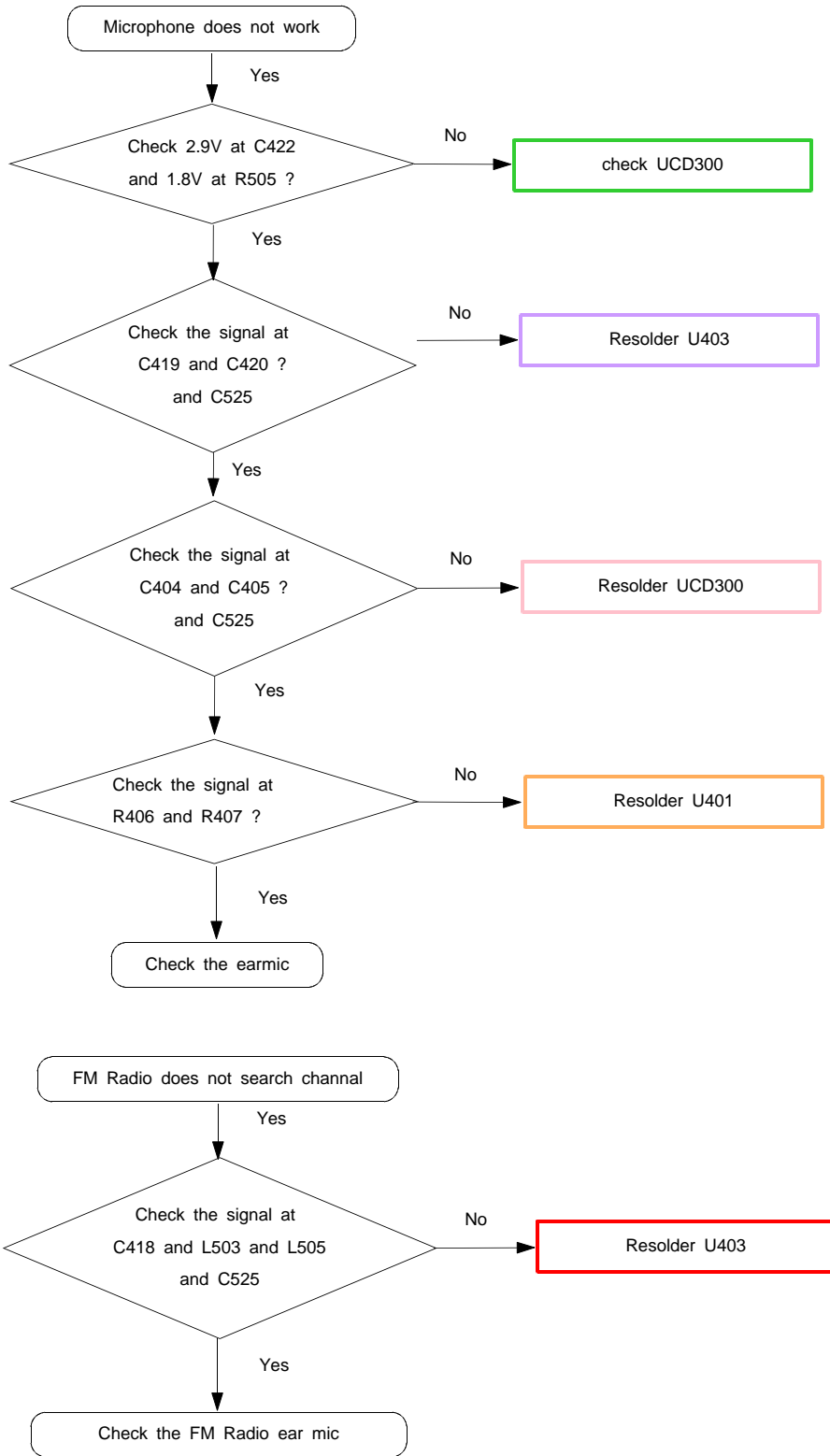


9-3. Bluetooth

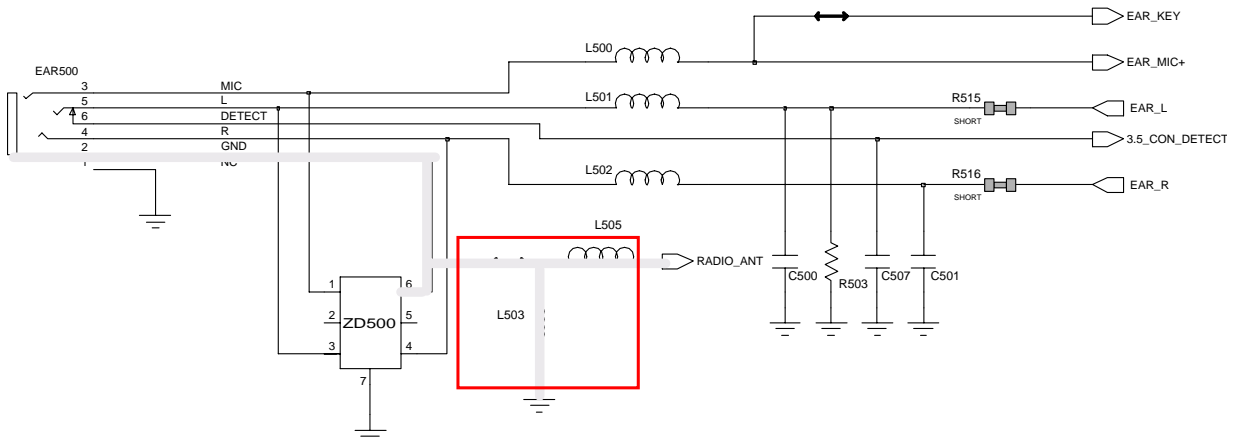
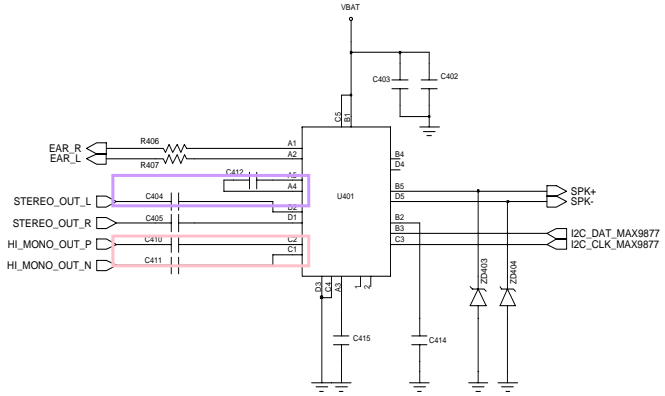
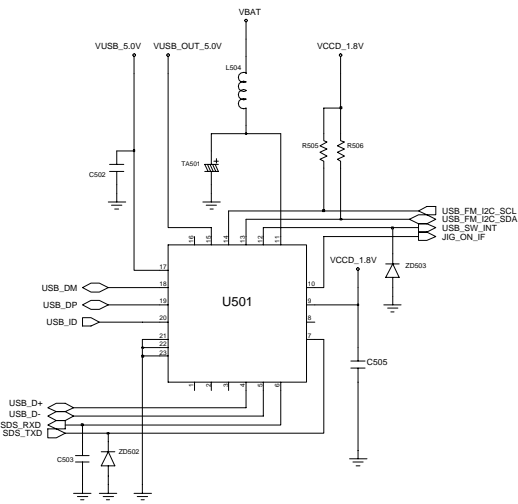
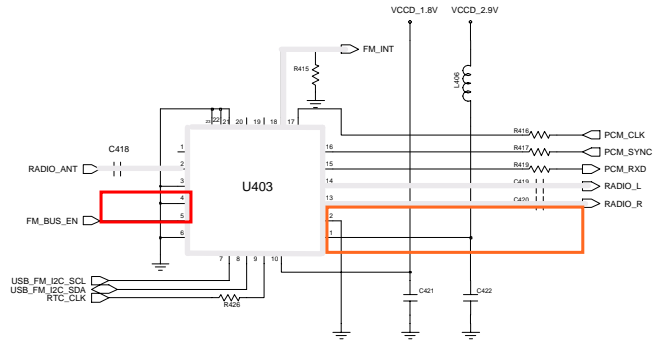


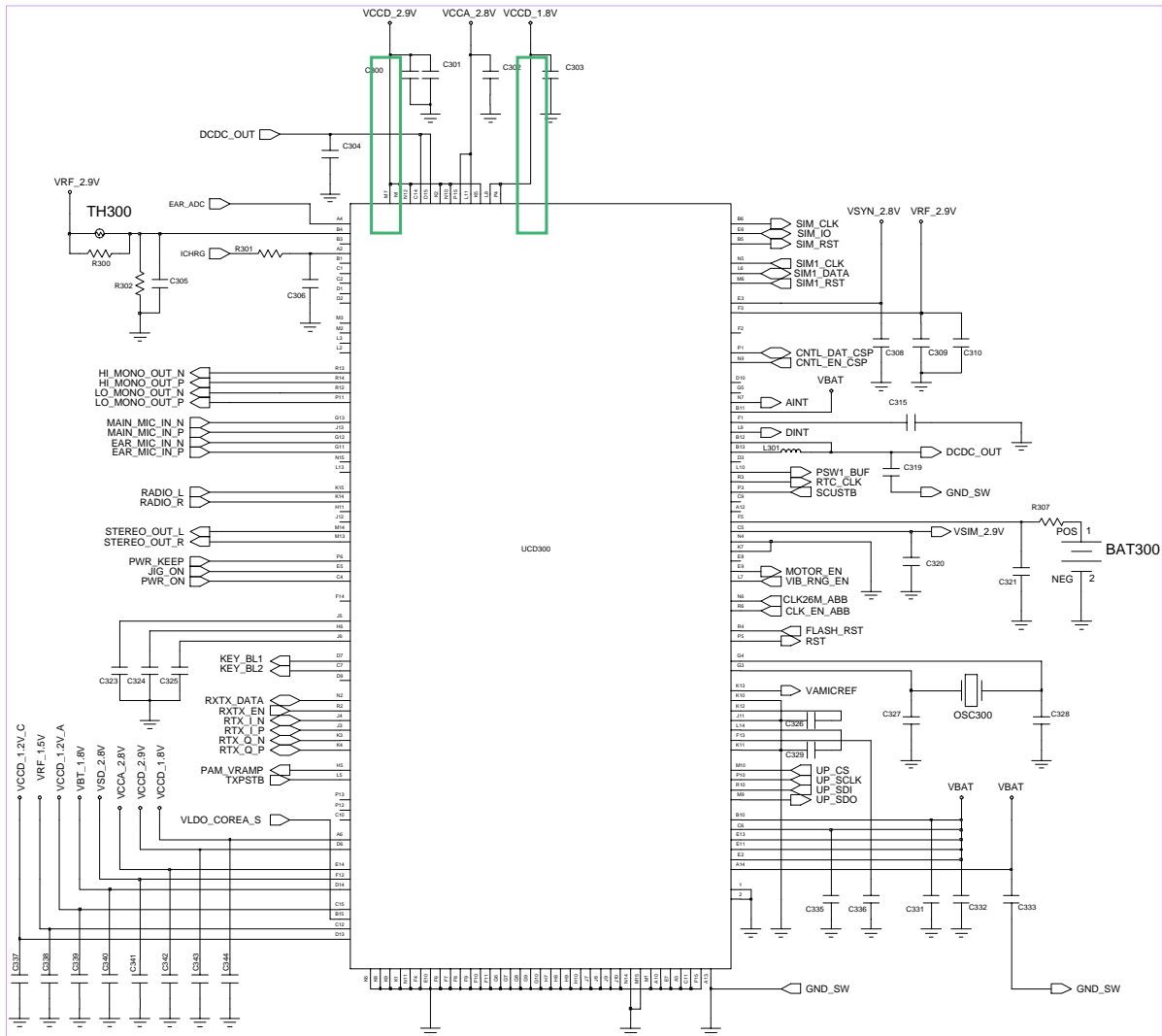


9-4. FM Radio Part



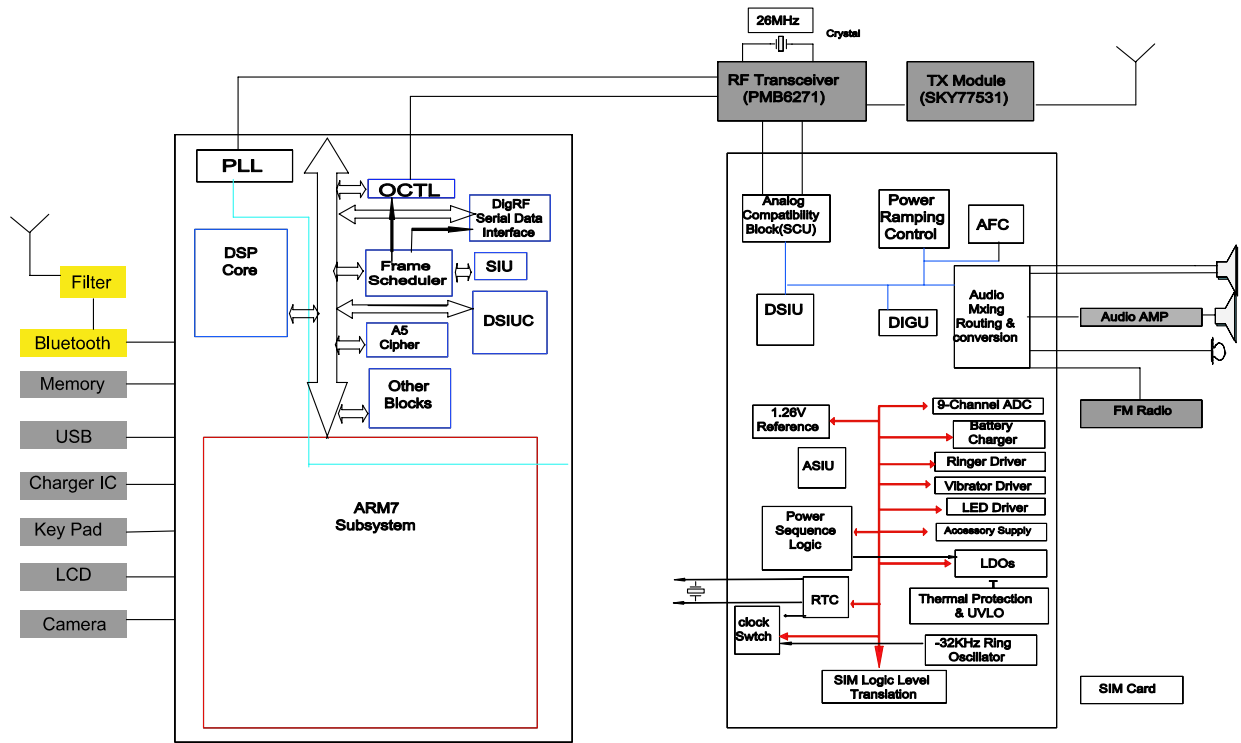
Flow Chart of Troubleshooting



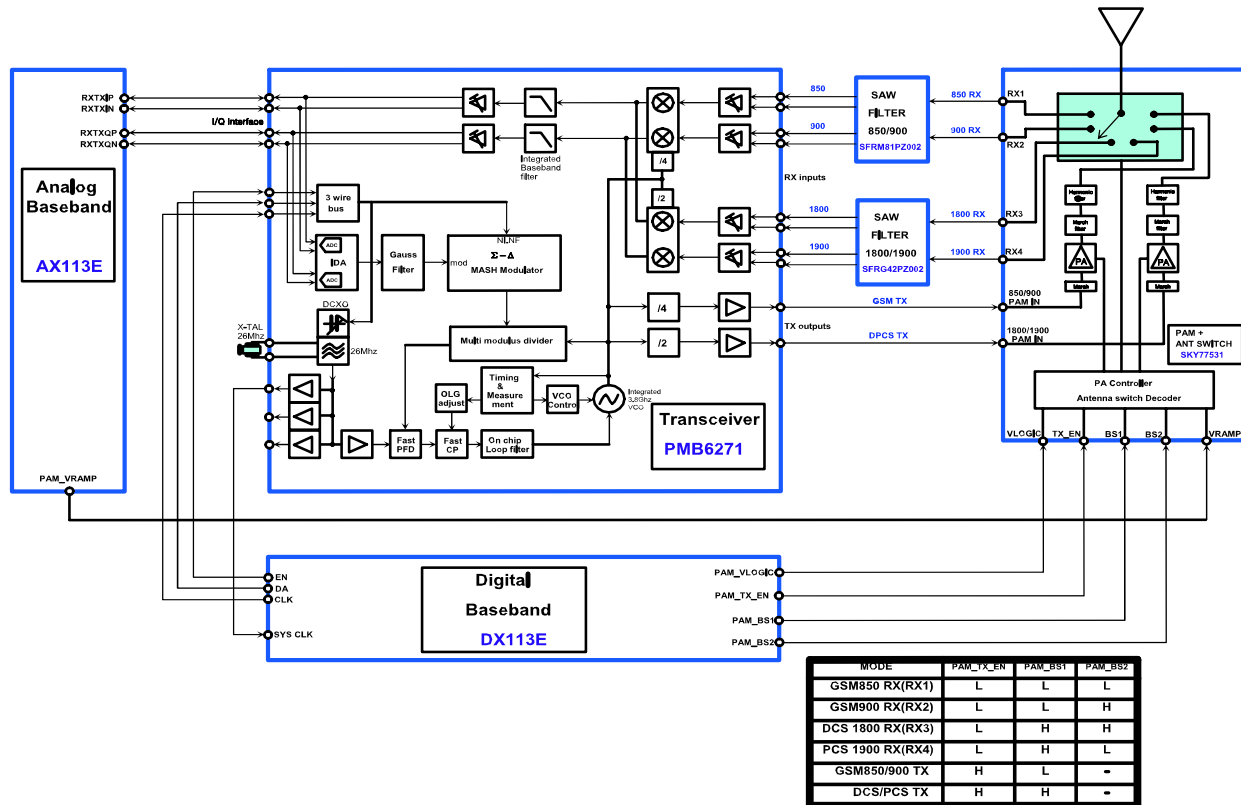


7. Block Diagrams

7-1. Block Diagram

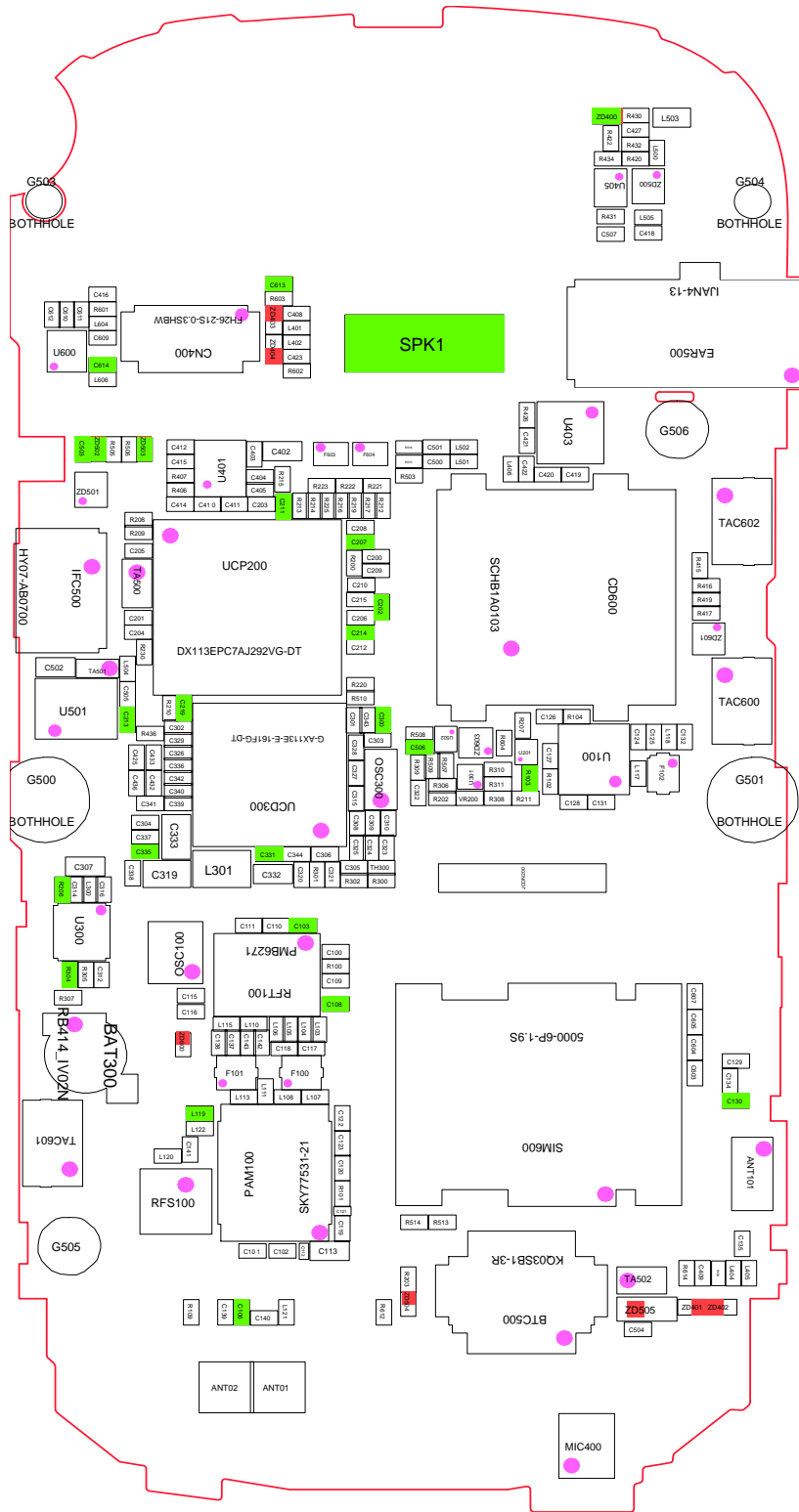


7-2. RF Block Diagram



8. PCB Diagrams

8-1. Main Top



8-2. Main Bottom

