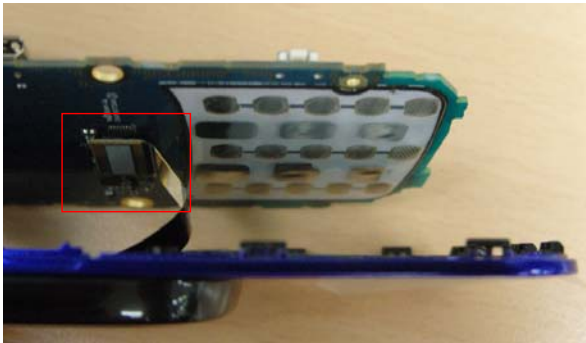
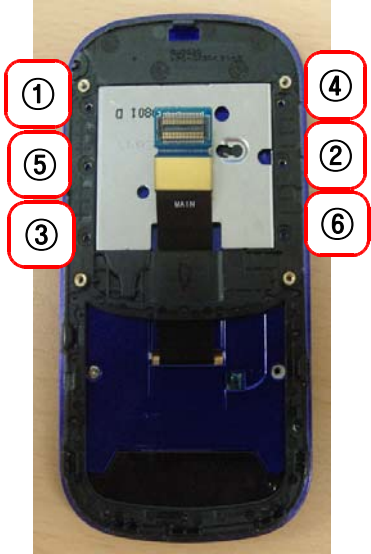
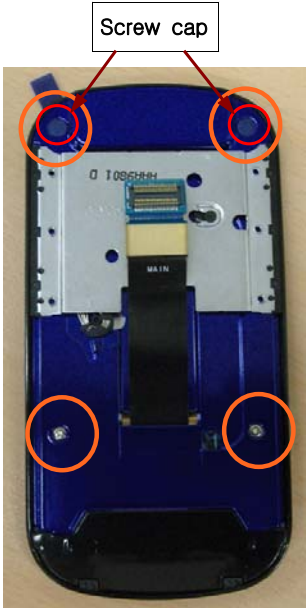



11. Disassembly and Assembly Instructions

11-1. Disassembly

<p>1 Loosening 4 point Screws</p>  <p>※ Torque : 1.1 ± 0.1 Kgf.cm</p>	<p>2 Disassembling a rear</p> 
<p>1) Loosening 4 point Screws in the order numbered</p>	<p>1) Disassembling a rear using a disassembly-jig with reference to the picture (Beware of scratch)</p>
<p>3 Verifying the condition after disassembly</p> 	<p>4 Disassembling PBA</p> 
<p>Verifying the condition like the picture after disassembly</p>	<p>Disassembling PBA through 3 hookers.</p>

<p>5 Disassembling Main Connector.</p> 	<p>6 Loosening screws used to disassembling Front</p> 
<p>Disassembling Main Connector. Loosening 6 point screws used to assemble Front.</p>	
<p>7 Disjoint screw cap and screws.</p> 	<p>8 Disassembling Lower</p> 
<p>Disjoint screw cap and screws. 1) Disassembling a lower using a disassembly-jig with reference to the picture (Beware of scratch) 2)Disassembling lower with care of damage of the FPCB</p>	

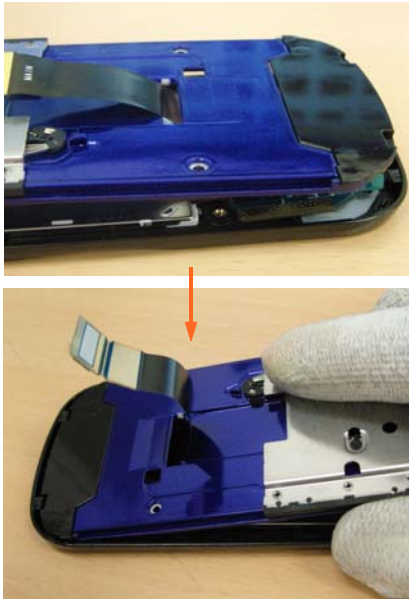
<p>9</p> <p>Verifying the condition after disassembly</p> 	<p>10</p> <p>Disassembling LCD module</p> 
<p>Verifying the condition like the picture after disassembly</p> <p>1)Using pinset disassembly motor 2)Through hooker disassembly LCD module</p>	
<p>11</p> <p>Disassembling main f-pcb</p> 	<p>12</p> <p>Disassembling FPCBs</p> 
<p>1)Disassembling main f-pcb. 2)Disassembling tape.</p> <p>1) Disassembling RCV FPCB 2) Disassembling LCD FPCB</p>	

11-2 Assembly

<div style="border: 1px solid black; padding: 5px; width: fit-content; margin-bottom: 10px;">1</div> <div style="border: 1px solid black; padding: 5px; margin-bottom: 10px; width: fit-content;">Assembling LCD FPCB</div> 	<div style="border: 1px solid black; padding: 5px; width: fit-content; margin-bottom: 10px;">2</div> <div style="border: 1px solid black; padding: 5px; margin-bottom: 10px; width: fit-content;">Assembling main f-pcb</div> 
<p>1) Assembling LCD FPCB 2) Assembling RCV FPCB</p>	<p>1)Assembling tape. 2)Assembling main f-pcb.</p>
<div style="border: 1px solid black; padding: 5px; width: fit-content; margin-bottom: 10px;">3</div> <div style="border: 1px solid black; padding: 5px; margin-bottom: 10px; width: fit-content;">Assembling LCD</div> 	<div style="border: 1px solid black; padding: 5px; width: fit-content; margin-bottom: 10px;">4</div> <div style="border: 1px solid black; padding: 5px; margin-bottom: 10px; width: fit-content;">Assembling LCD module</div> 
<p>Assembling LCD in the direction of the arrows like the picture</p>	<p>1)Through hooker Assembling LCD module 2)Using pinset Assembling motor</p>

5

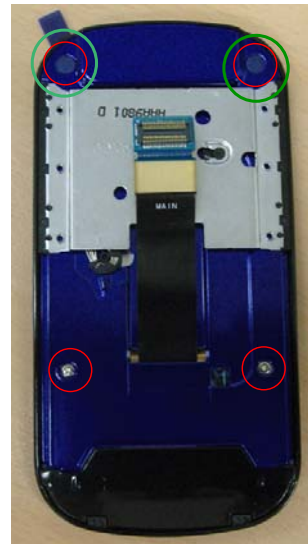
Assembling Lower



Assembling lower with care of damage of the FPCB

6

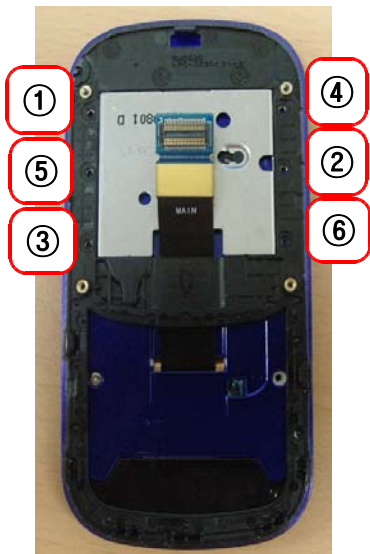
Joint screw and screw cap.



Joint screws and screw cap.

7

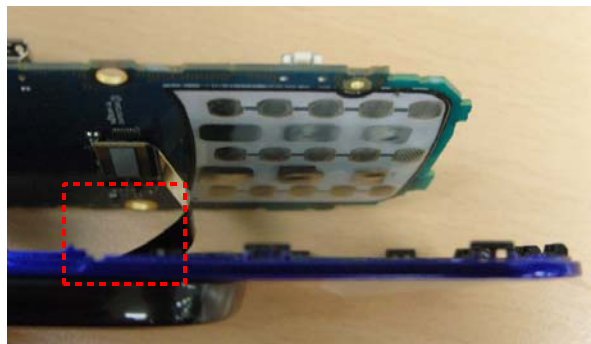
Joint screws used to assembling Front.



Joint 6 point screws used to assemble Front.

8

Assembling Main Connector.



Assembling Main Connector.

<div data-bbox="168 233 240 281" style="border: 1px solid black; padding: 2px; width: fit-content;">9</div> <div data-bbox="272 268 792 310" style="border: 1px solid black; padding: 2px;">Assembling PBA</div> 	<div data-bbox="824 233 896 281" style="border: 1px solid black; padding: 2px; width: fit-content;">10</div> <div data-bbox="922 268 1458 310" style="border: 1px solid black; padding: 2px;">Assembling REAR</div> 
<p>Assembling PBA through 3 hooker .</p>	<p>FROM the top to the bottom, Assembling REAR</p>
<div data-bbox="168 997 240 1045" style="border: 1px solid black; padding: 2px; width: fit-content;">10</div> <div data-bbox="212 1066 743 1119" style="border: 1px solid black; padding: 2px;">Joint screws</div> 	
<p>1) Joint 4 point Screws in the order numbered</p>	