
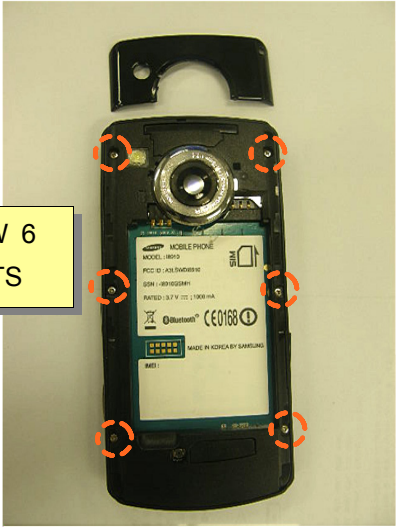
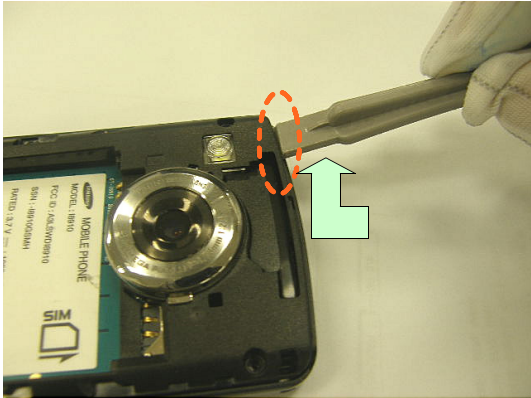
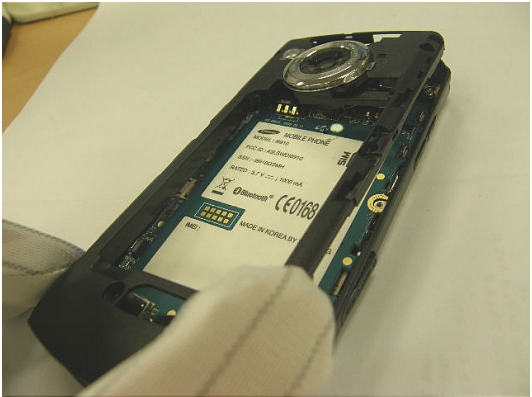
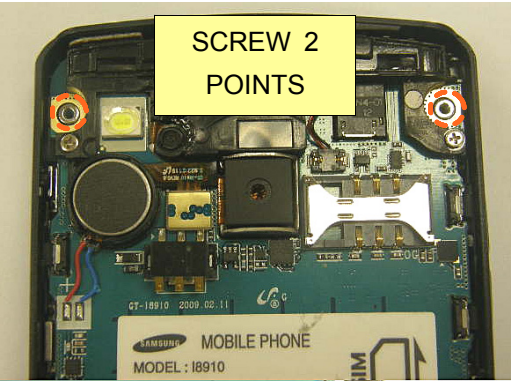
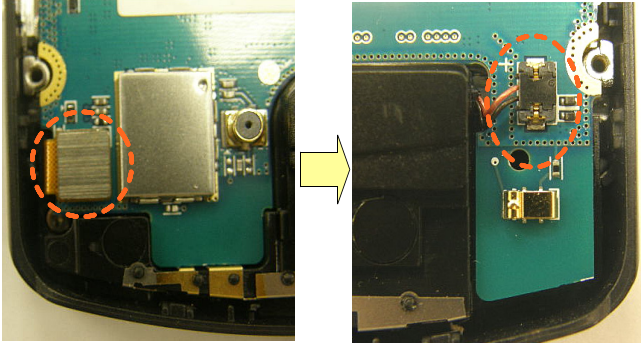
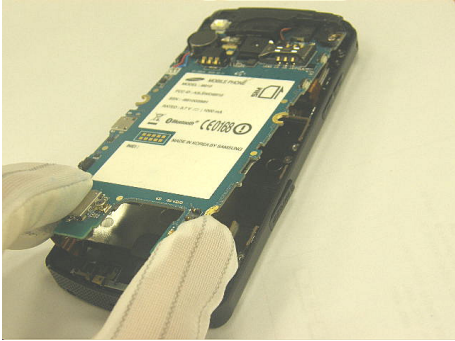
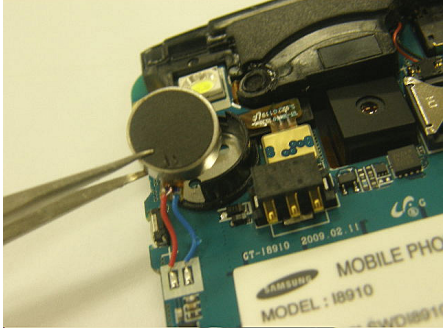
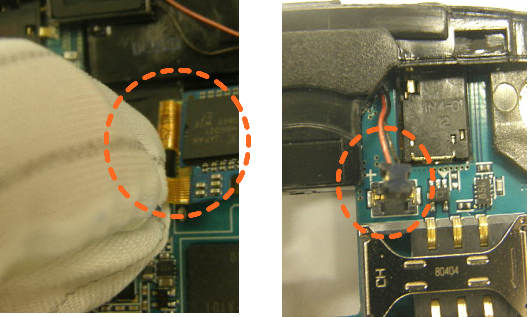
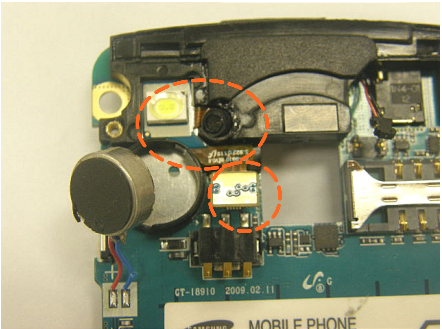
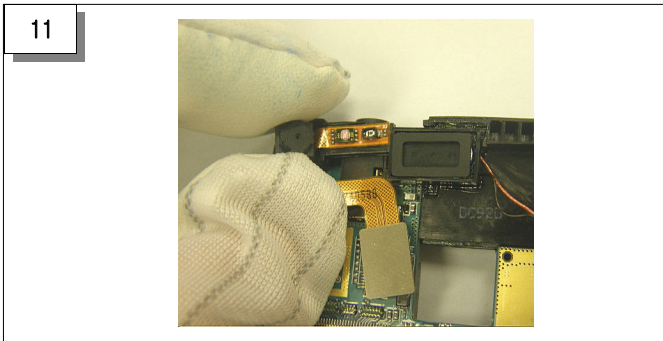


11. Disassembly and Assembly Instructions

11-1. Disassembly Instructions

<p>1</p> 	<p>2</p>  <p>SCREW 6 POINTS</p>
<p>Remove the Rear cover</p> <ul style="list-style-type: none">- Use a decomposition tool to Rear cover part and make gap between Rear cover and Rear.- Using a decomposition tool, locker is disintegrated easily.	<p>Remove Screws</p> <ul style="list-style-type: none">- Remove 6 Screws.
<p>3</p> 	<p>4</p> 
<p>Separate the Rear</p> <ul style="list-style-type: none">- Separate upper part corner using a decomposition tool.	<p>Separate the Rear</p> <ul style="list-style-type: none">- Separate all corners using a decomposition tool.- Lift the rear from the front with care.

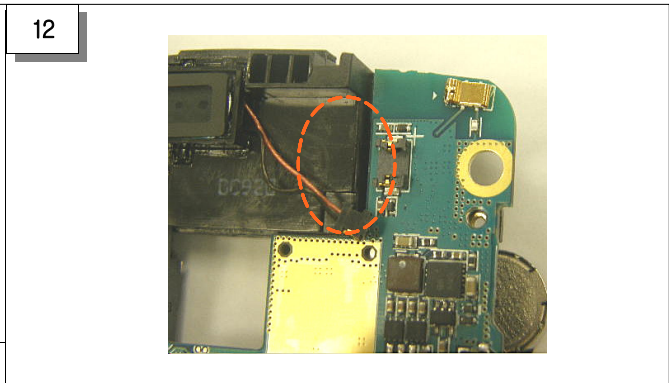
<p>5</p> 	<p>6</p> 
<p>Remove Screws</p> <ul style="list-style-type: none"> - Remove 2 Screws. 	<p>Separate the KEY & SPK connector .</p> <ul style="list-style-type: none"> - Separate KEY & SPK Connector from the PBA Connector with care.
<p>7</p> 	<p>8</p> 
<p>Separate the PBA from FRONT Ass'y.</p> <ul style="list-style-type: none"> - Separate the PBA from the FRONT Ass'y with care. 	<p>Separate the MOTOR from PBA.</p> <ul style="list-style-type: none"> - Separate motor carefully so that motor wire does not cut from PBA.
<p>9</p> 	<p>10</p> 
<p>Separate the 8M CAM & SPEAKER connector.</p> <ul style="list-style-type: none"> - Separate 8M CAM & SPEAKER connector from the PBA connector with great care. (Be careful not to cut wire.) 	<p>Separate the FLASH FPCB connector.</p> <ul style="list-style-type: none"> - Separate FLASH FPCB connector from the PBA connector with great care. (Be careful not to tear FPCB.)



11

Separate the CIF CAM connector with sensors from PBA.

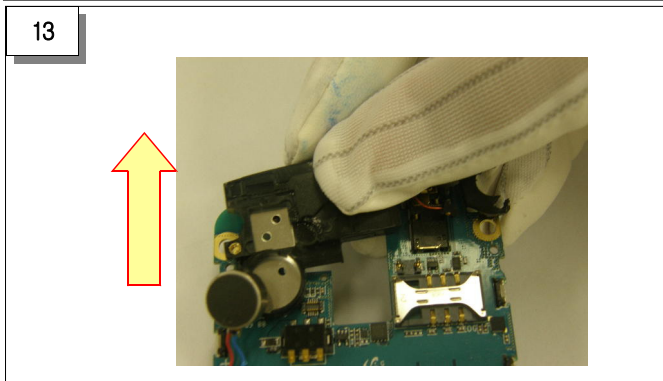
- Separate CIF CAM connector from the PBA connector with great care. (Be careful not to damage SENSORS.)



12

Separate the RECEIVER connector.

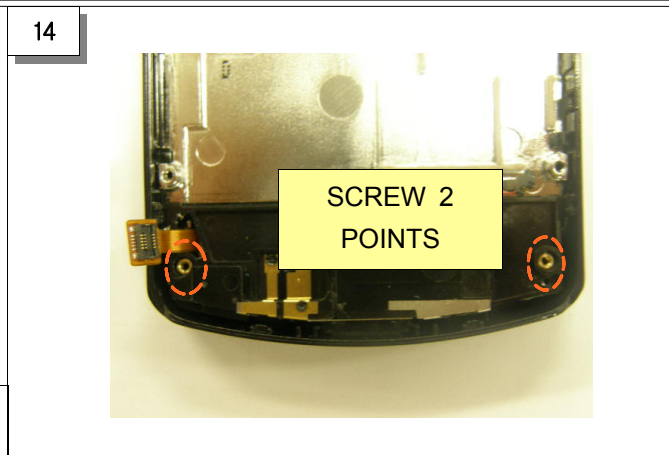
- Separate RECEIVER connector from the PBA connector with great care. (Be careful not to cut wire.)



13

Separate the Speaker Module from PBA.

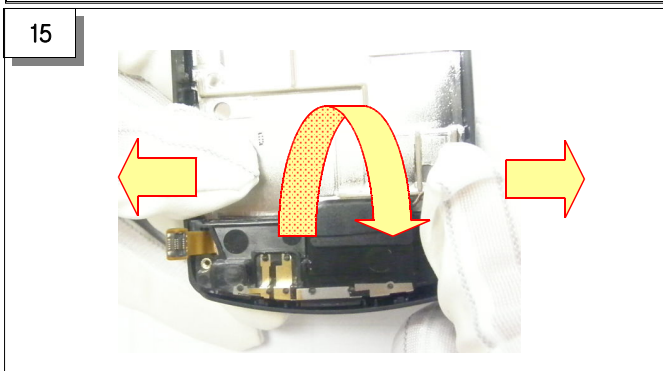
- Separate speaker module from the PBA connector with great care. (Pull to arrow direction and take out as parts does not get damage.)



14

Remove Screws

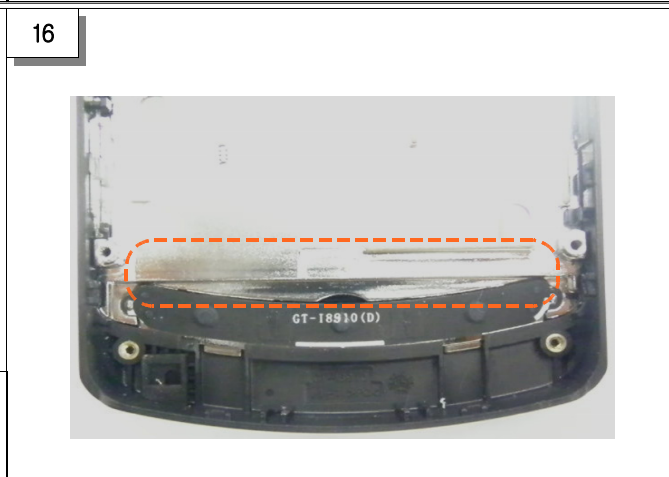
- Remove 2 Screws.



15

Separate the Lower SPK Module from Front ass'y.

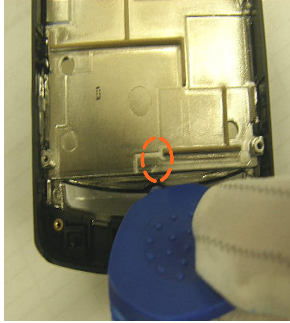
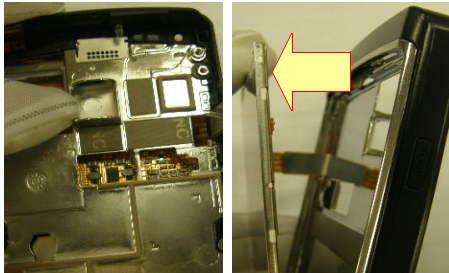
- Pull mold to left/right interactive and press key pad of opposite with hand and separate lower speaker module




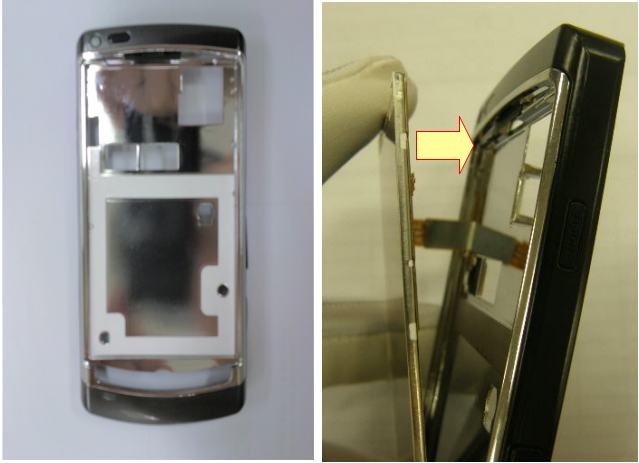
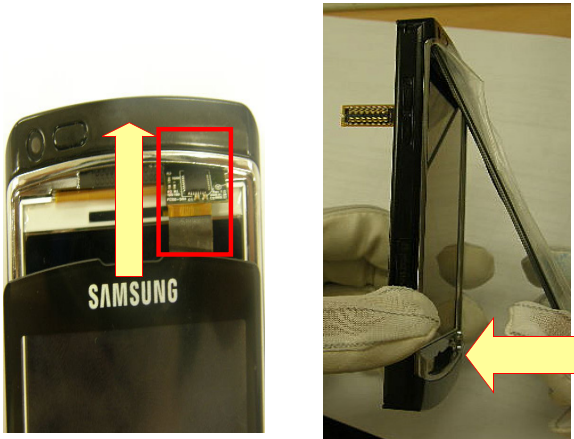
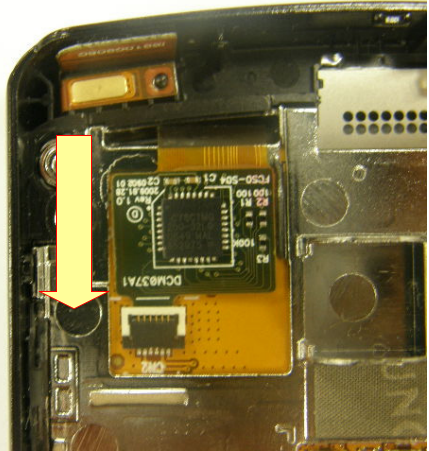
16

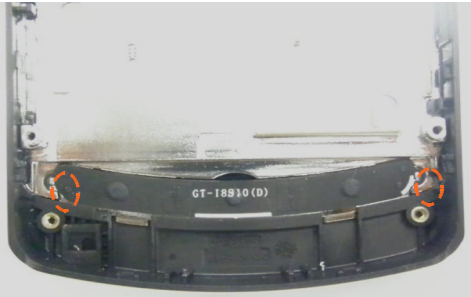
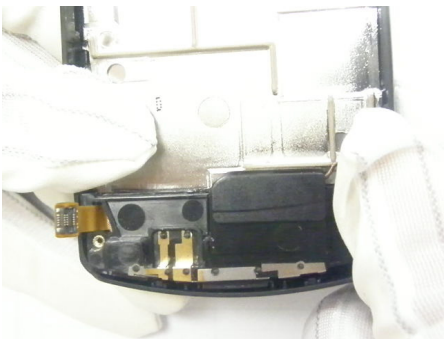
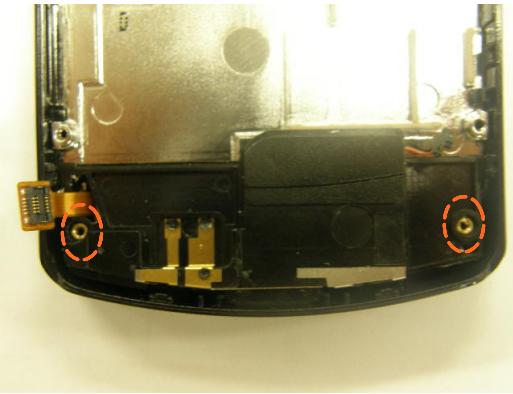
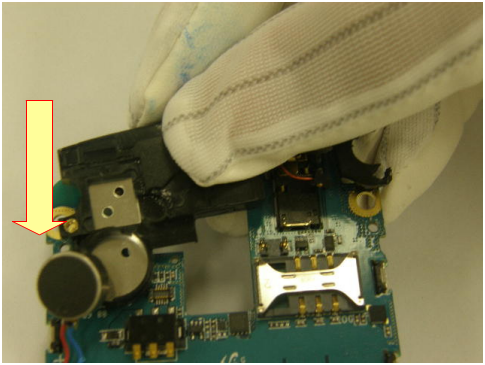
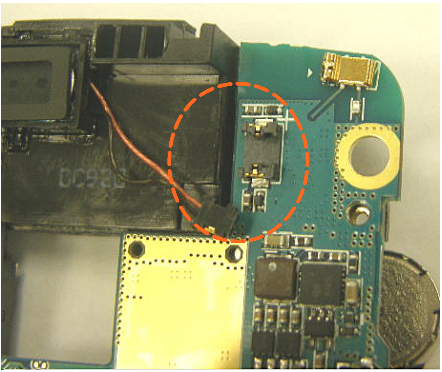
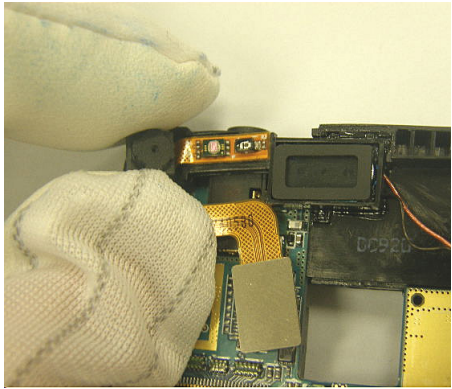
Separate the Keypad.

- Separate the Keypad.

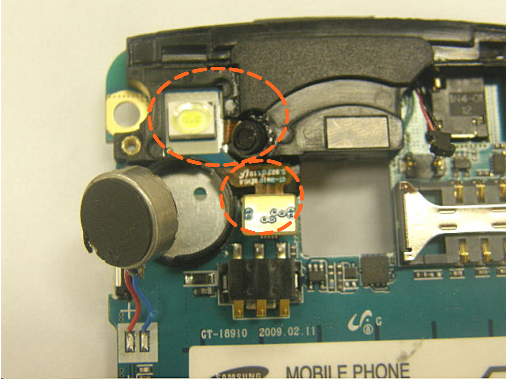
<p>17</p> 	<p>18</p> 
<p>Separate the TSP from Front ass'y(1). - Separate TSP FPCB to Open lever of ZIP TYPE connector.</p>	<p>Separate the TSP from Front ass'y(2). ※ Disjoint maximum carefully as TSP unit is danger to be damaged when disassembling strongly because TSP unit makes of tempered glass.</p>
<p>19</p> 	<p>20</p> 
<p>Separate the TSP from Front ass'y(3) - Lift to take care TSP ※ Take care as IC on connector is not damaged by hole.</p>	<p>Separate the OLED from Front ass'y -Take out to arrow direction lest connector should be damaged after pushing OLED through OLED decomposition hole carefully.</p>
<p>21</p> 	
<p>THE END.</p>	

11-2. Disassembly Assembly

<p>1</p> 	<p>2</p>  <p>Insert the OLED to Front ass'y - Place stiffener of OLED passing hole carefully after removing double-sided tape a release paper of OLED bracket.</p>
<p>Ready</p>	
<p>3</p>  <p>Assemble the TSP from Front ass'y(1). - Insert the TSP FPCB to passing hole. ※ Take care as IC on connector is not damaged by hole.</p>	<p>4</p>  <p>Assemble the TSP from Front ass'y(2). - Lock lever after inserting TSP FPCB in ZIP connector.</p>

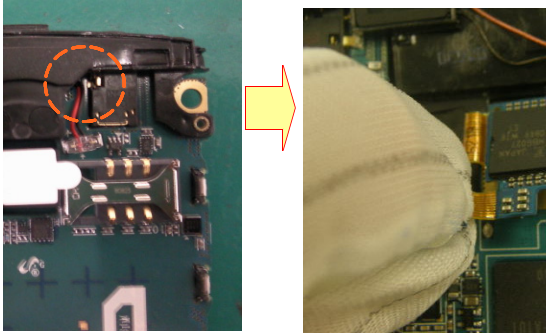
<p>5</p> 	<p>6</p> 
<p>Place the KEY PAD. - Keep in mind to guide hole and assemble key pad.</p>	<p>Assemble the Lower SPK Module to Front ass'y. -Insert lower speaker module so that locker is assembled.</p>
<p>7</p> 	<p>8</p> 
<p>Tighten screws at 2 points.</p>	<p>Assemble the UPPER SPK MODULE.(1) -Insert in PBA to lower direction carefully over as EARJACK is not damaged upper speaker module.</p>
<p>9</p> 	<p>10</p> 
<p>Assemble the UPPER SPK MODULE.(2) - Assemble RECEIVER connector .</p>	<p>Assemble the UPPER SPK MODULE.(3) - Assemble the CIF CAM+SENSOR MODULE to the PBA connector with great care..</p>

11



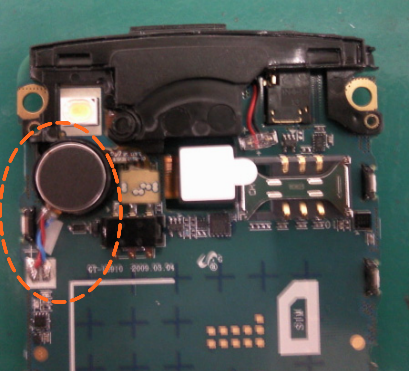
Assemble the UPPER SPK MODULE.(4)
 - Assemble FLASH LED+MIC MODULE connector.

12



Assemble the 8M CAMERA.
 - Assemble 8M CAMERA connector after assembling **twisting** upper speaker module wire **two rounds**.

13



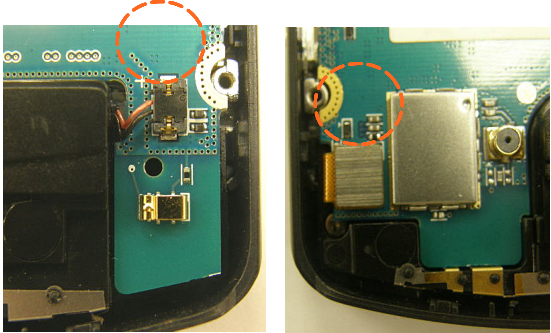
Insert the MOTOR.
 - Place motor wire to (Be careful of is expired) bracket **twisting** round.

14



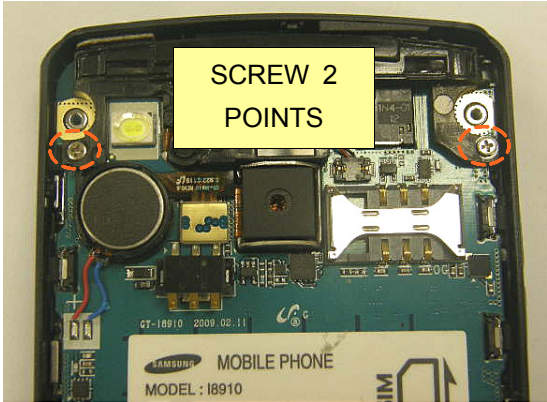
Assemble the PBA to FRONT Ass'y.
 - Place PBA carefully on hook.

15



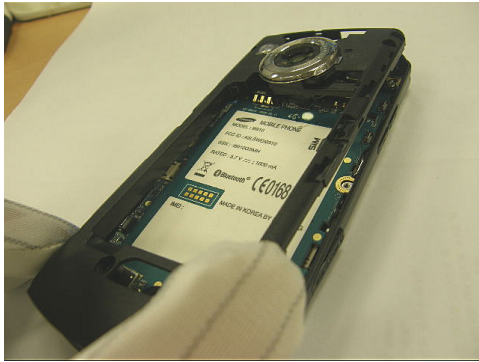
Assemble the KEY & SPK connector .
 - Assemble KEY & SPK Connectors to the PBA Connector with care.

16



Tighten screws at 2 points.

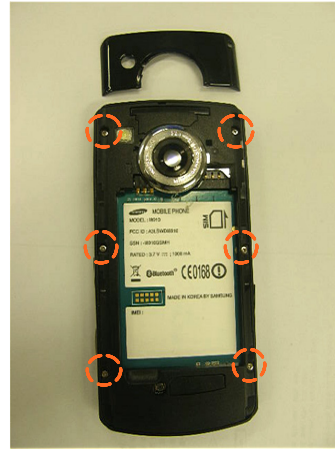
17



Assemble the Rear

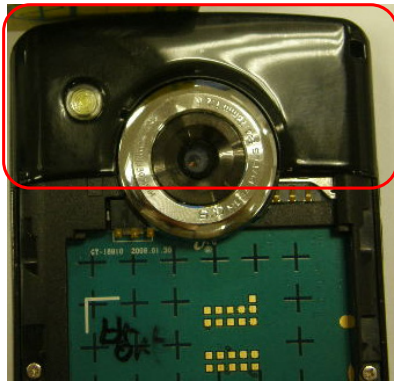
- Assemble the Rear carefully on hook.

18



Tighten screws at 6 points.

19



Assemble the Deco.

- Assemble the Deco carefully on hook.

20



THE END