



11. Disassembly and Assembly Instructions

11-1. Disassembly

<p>1</p>  <p>SCREW 4 POINTS</p>	<p>2</p> 
<p>1) Remove Screws - Remove 4 Screws.</p>	<p>1) Remove the Rear cover - 1 - Use a decomposition tool to VOLUME KEY part and make gap between Front and Lear. - If turn over rear upper corner hanger part backward using a decomposition tool, upper locker is disintegrated easily.</p>
<p>3</p> 	<p>4</p> 
<p>1) Remove the rear cover - 2 - Lift the rear from the front with care.</p>	<p>1) Remove 2 SIDE KEYS and IF COVER.</p>

5



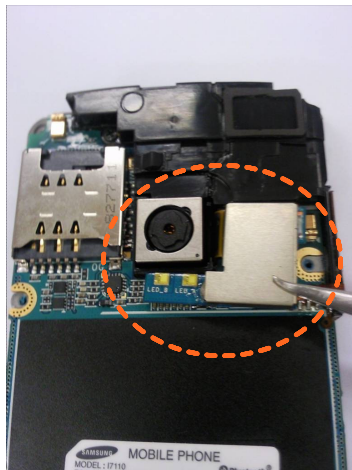
- 1) Remove Screws
- Remove 2 Screws.

6



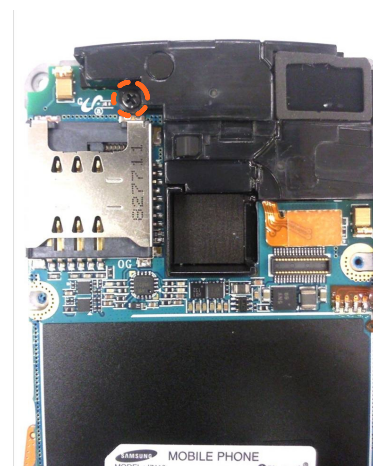
- 1) Separate the FRONT from the PBA Assa'y.
- Separate the FRONT from the PBA Assay with care.

7



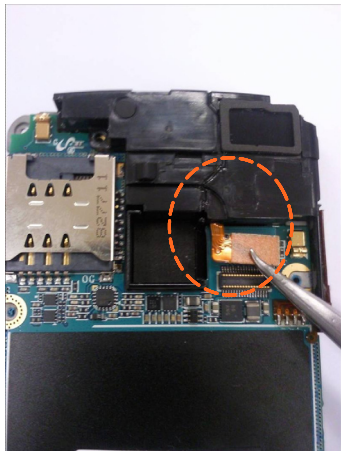
- 1) Separate the 5M CAMERA MODULE.
- Separate 5M CAMERA MODULE Connector from the PBA Connector with care.

8



- 1) Remove a Screw
- Remove a screw.

9



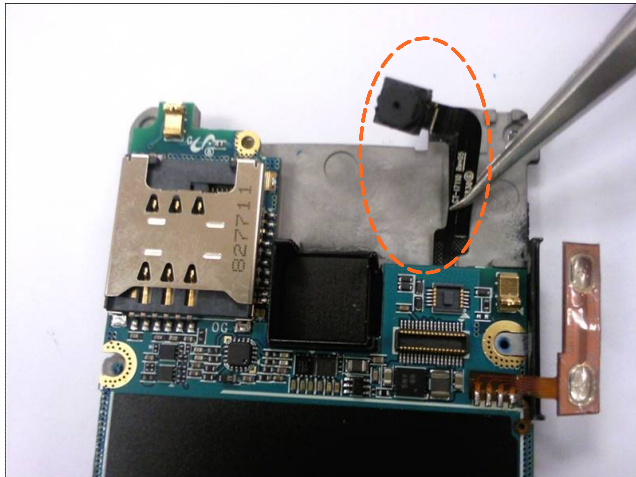
1) Separate the SPEAKER.
- Separate SPEAKER FPCB Connector from the PBA Connector with great care. (Be careful not to tear Key FPCB.)

10



1) Detach VOLUME KEY FPCB AND CAMERA KEY FPCB.
- Detach 2 SIDE KEY FPCB from the main SHIELD CAN with great care. (Be careful not to tear Key FPCB.)

11



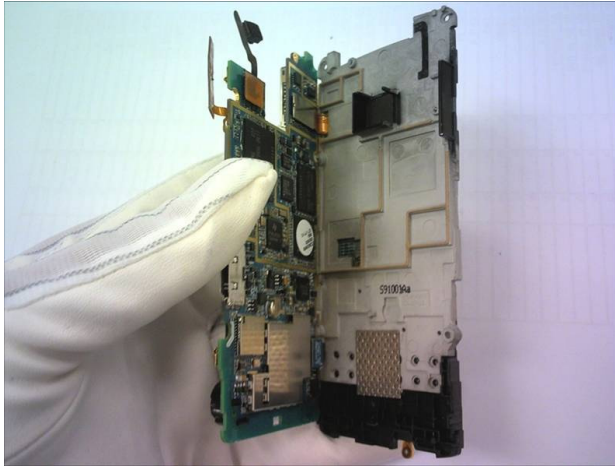
1) Detach VGA CAMERA.
- Detach VGA Camera attached to the main shield can with great care not to tear VGA Camera FPCB.

12



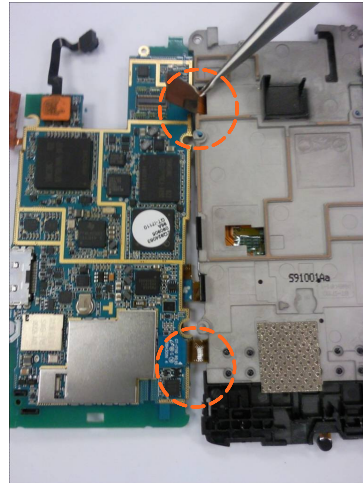
1) Separate PBA from 3 lockers.
- Separate PBA from 3 lockers.

13



1) Separate PBA from the main shield can
-Separate PBA from the main shield can referring to the above picture.

14



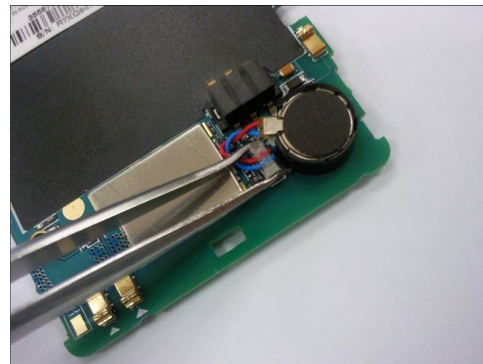
1) Separate LCD CONNECTOR and KEY CONNECTOR.
- Separate LCD Connector and KEY Connector from PBA with care.

15



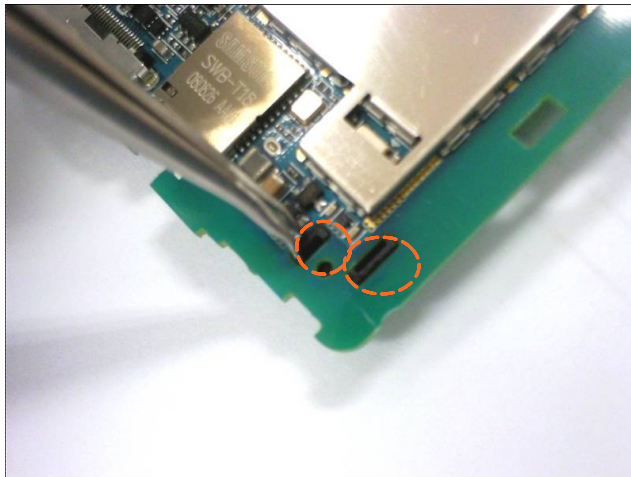
1) Separate VGA CAMERA.
- Separate VGA CAMERA connector from PBA.

16



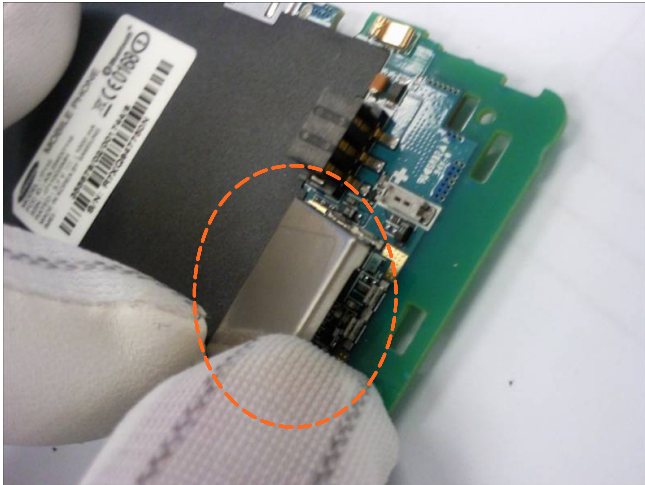
1) Separate the MOTOR CONNECTOR.
- Separate the MOTOR CONNECTOR from PBA connector with great care not to tear the wire.

17



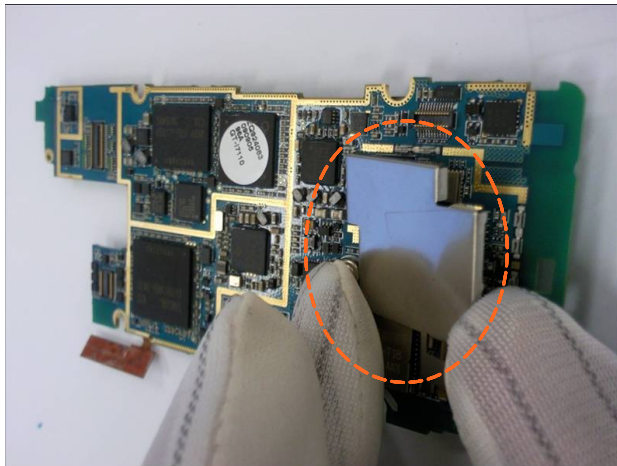
- 1) Separate MOTOR from 2 lockers.
- Separate MOTOR from 2 lockers.

18



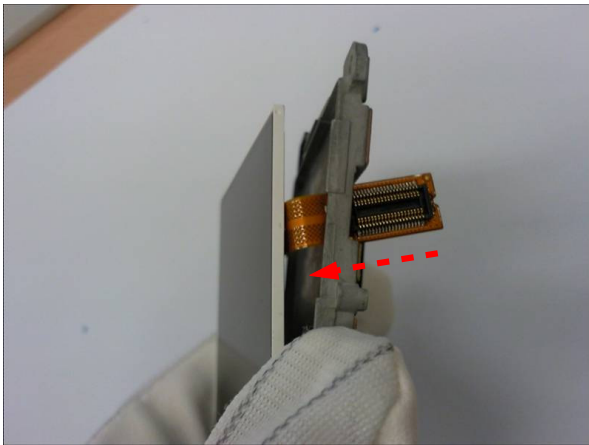
- 1) Remove RF Shield can from the PBA BOTTOM.
- Remove RF Shield can from the PBA BOTTOM.

19



- 1) Remove RF Shield can from the PBA TOP.
- Remove RF Shield can from the PBA TOP.

20



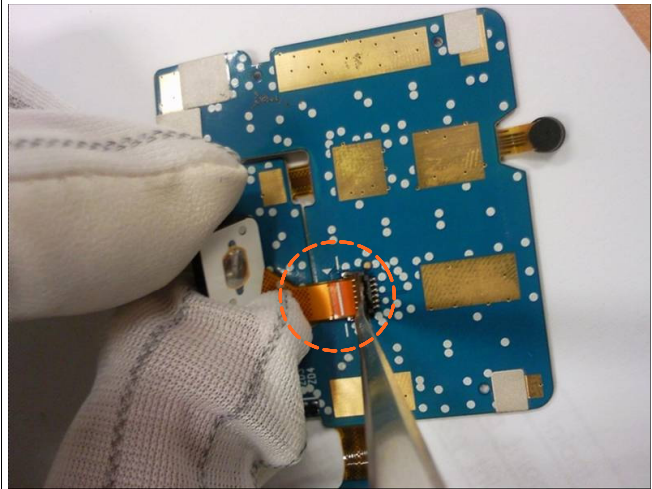
- 1) Separate LCD from the main shield can.
- Separate LCD from the main shield can.

21



1) Separate KEY PCB.
 - Separate KEY PCB from MAIN SHIELD CAN. (Be careful that KEY PCB is attached to MAIN SHIELD CAN strongly with tape.)

22



1) Separate OJ KEY from KEY PCB.
 - Open OJ KEY CONNECTOR LOCKER and Separate OJ KEY from KEY PCB.

23



1) Separate Intenna from REAR.
 - Separate Intenna from REAR.(When separating, take care lest LOCKER of intenna should break.)

24



1) Separate KEY PAD from FRONT.
 - Separate KEY PAD from FRONT.

25



1) The END.

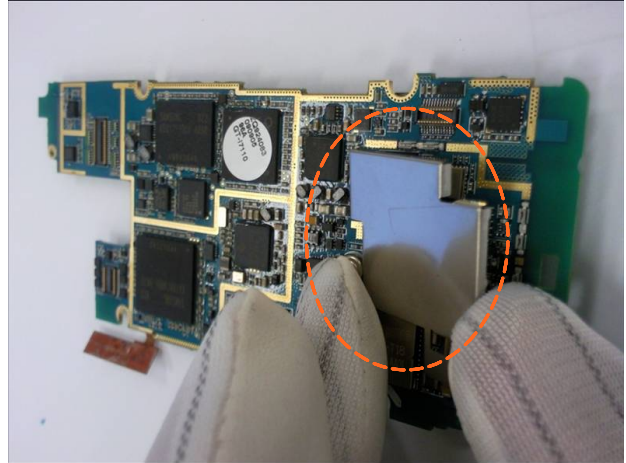
11-2. Assembly

1



1) START.

2



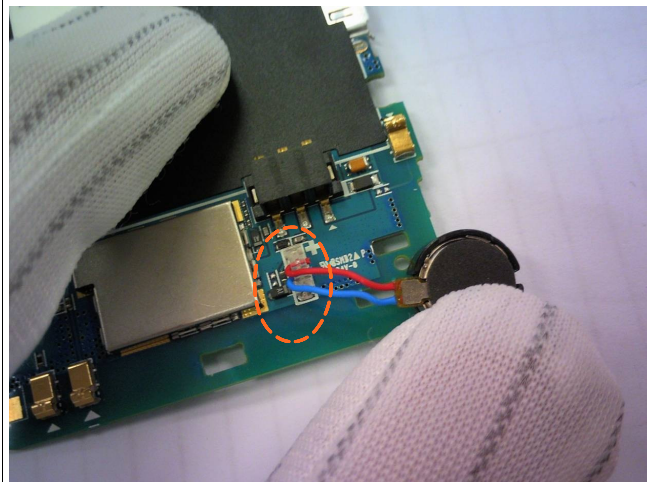
1) Assemble the SHIELD CAN to PBA TOP.

3

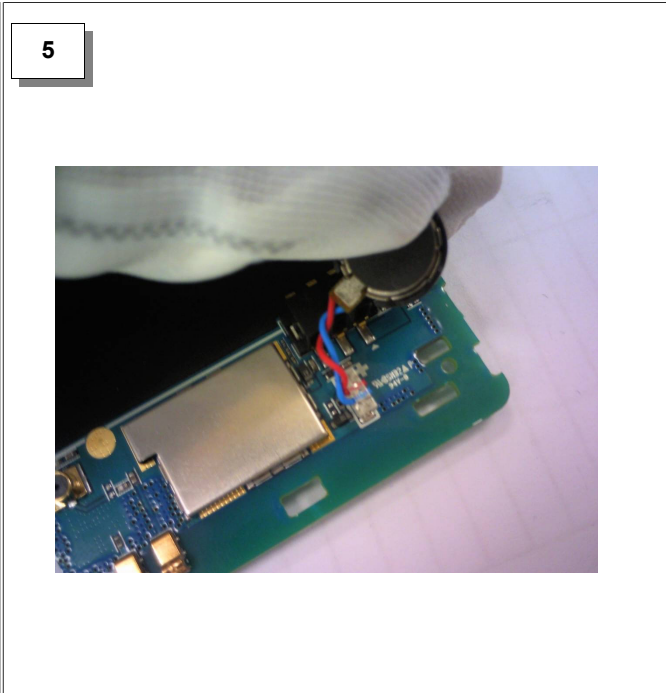


1) Assemble the SHIELD CAN to PBA BOTTOM.

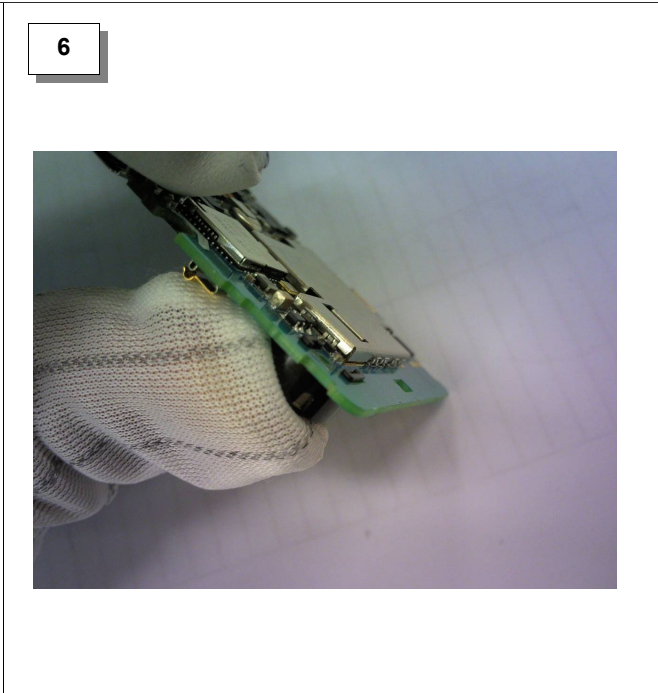
4



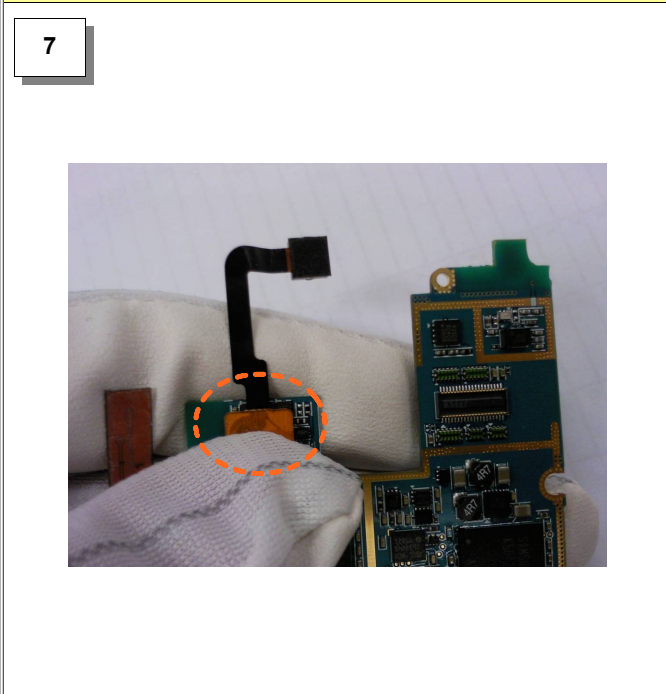
1) Insert the MOTOR CONNECTOR to PBA connector.
(※Take care in polarity)



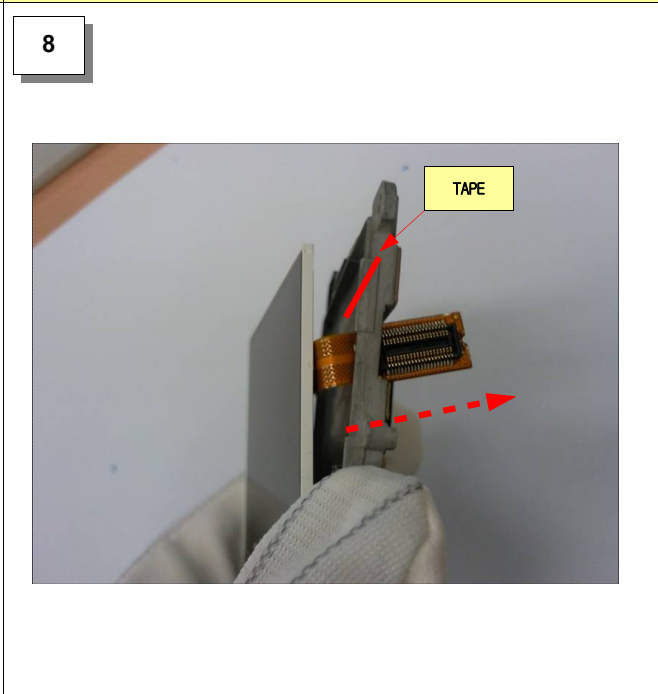
1) Twist motor wire two times.



1) Assemble motor to 2 HOLES.(Motor fixation does with tape in the floor.)

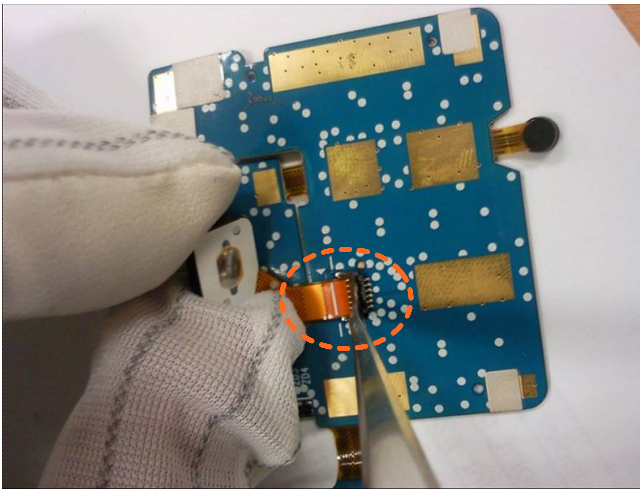


1) Combine pressing VGA camera until sound click.



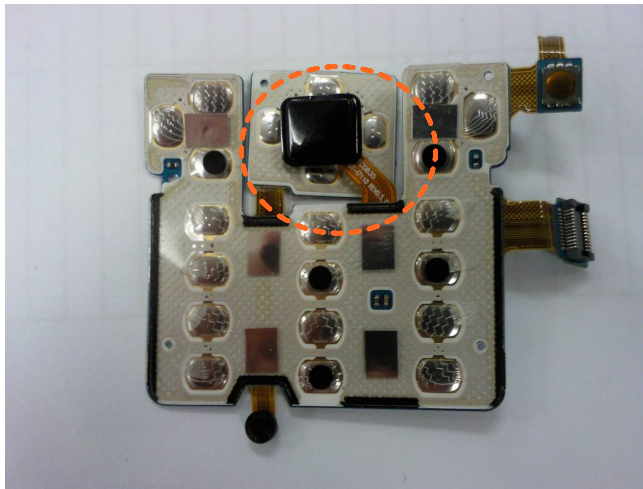
1) Place LCD to MAIN Shield can after inserting LCD connector to arrow direction.(LCD fixation does to double sides TAPE that is on LCD placing area upper.)

9



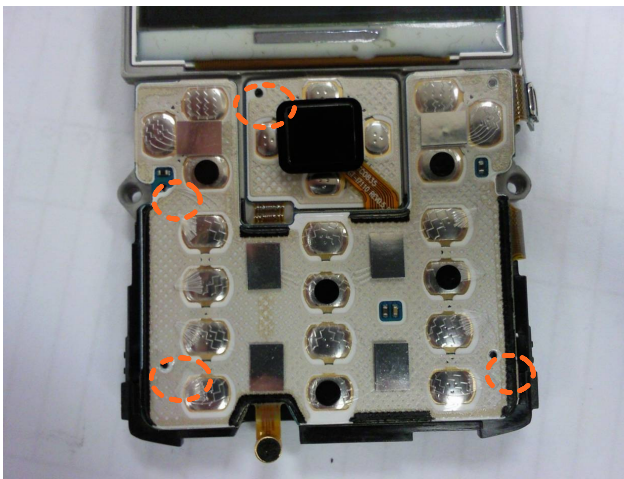
1) Insert OJ KEY connector in ZIP type connector and close locker.

10



1) OJ KEY comes to NAVI KEY fore-end.

11



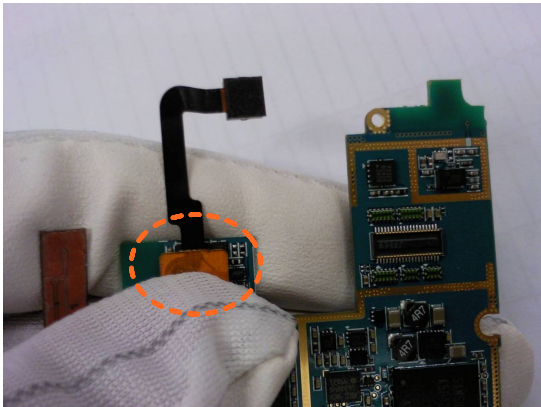
1) Set to fixation hole and attach on main Shield can.

12



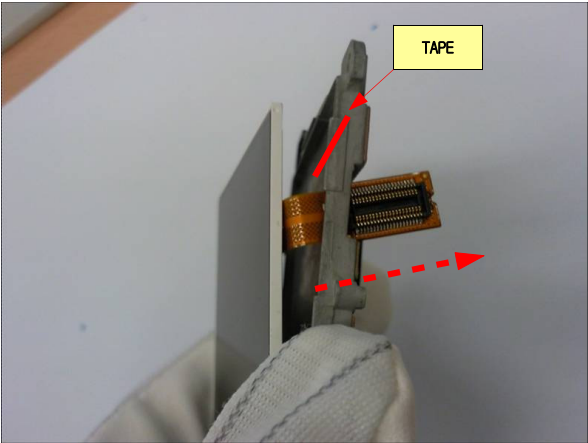
1) Set to fixation hole and attach on main Shield can.

13



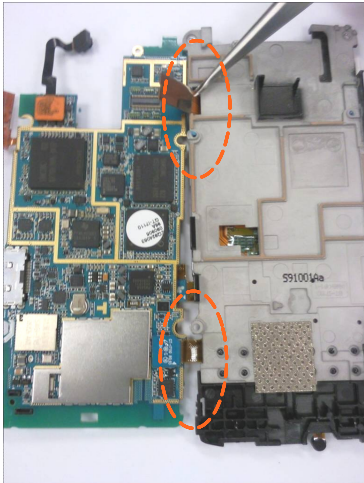
1) Combine pressing VGA camera until sound click.

14



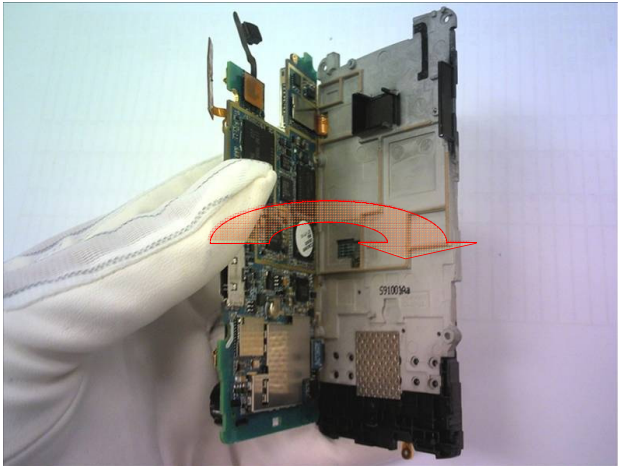
1) Place LCD to MAIN Shield can after inserting LCD connector to arrow direction.(LCD fixation does to double sides TAPE that is on LCD placing area upper.)

15



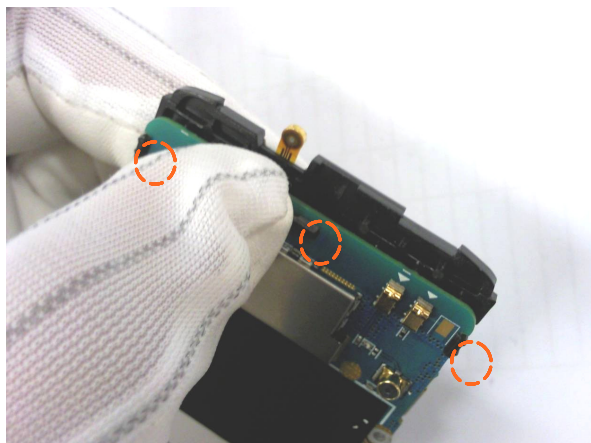
1) Combine LCD connector and KEY connector with MAIN Shield can.

16



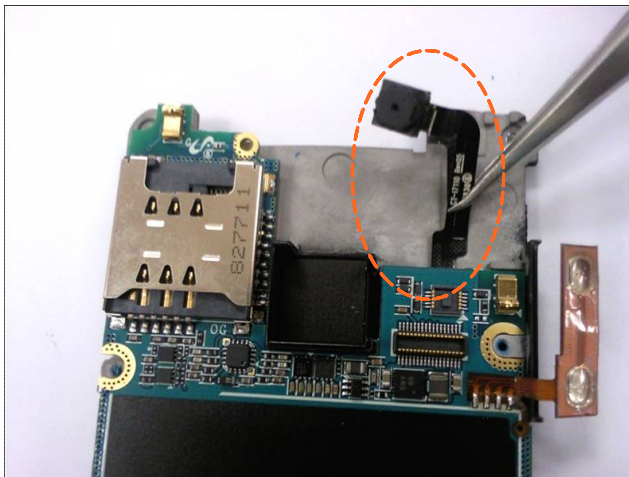
1) Combine PBA to MAIN Shield CAN to arrow direction.

17



1) Press 3 LOCKERs until sound click.

18



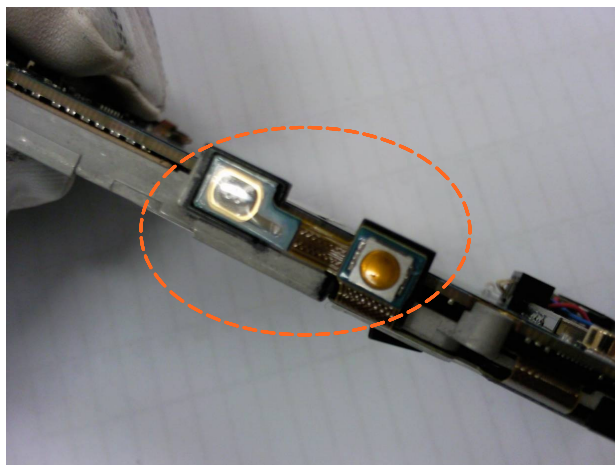
1) Attach VGA camera to MAIN SHIELD CAN.

19



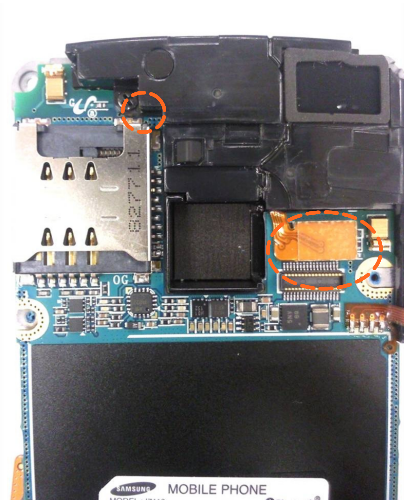
1) Attach volume keys FPCB on main Shield can.

20



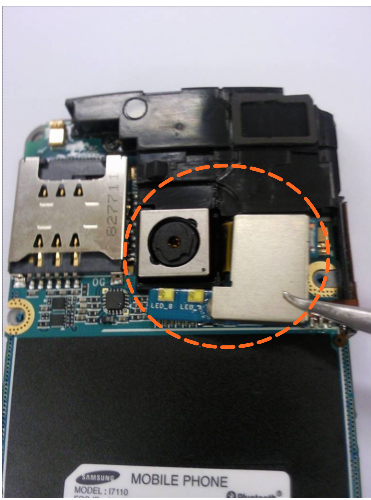
1) Attach CAMERA keys FPCB on main Shield can.

21



1) Tighten screw after combining speaker module connector until sound click to PCB connector.

22



1) Combining camera module connector until sound click to PCB connector.

23



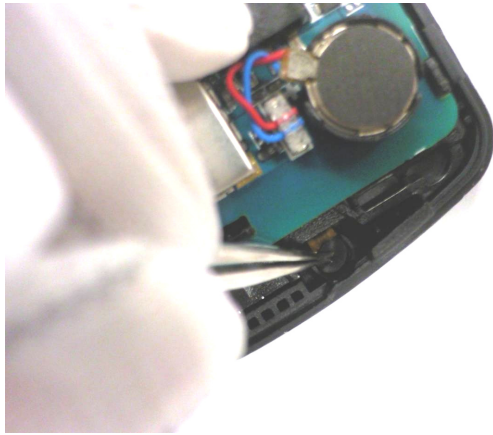
1) Place key pad in front.

24



1) Combine PBA in front.

25



1) Confirm whether MIC placed well to microphone holder.

26



1) Tighten screws at 2 points.

27



1) Combine antenna until sound click to REAR.

28



1) PUT a volume key, camera key, IF cover on FRONT.

29



1) Strain screw 4 points after assembling rear.

30



1) THE END.