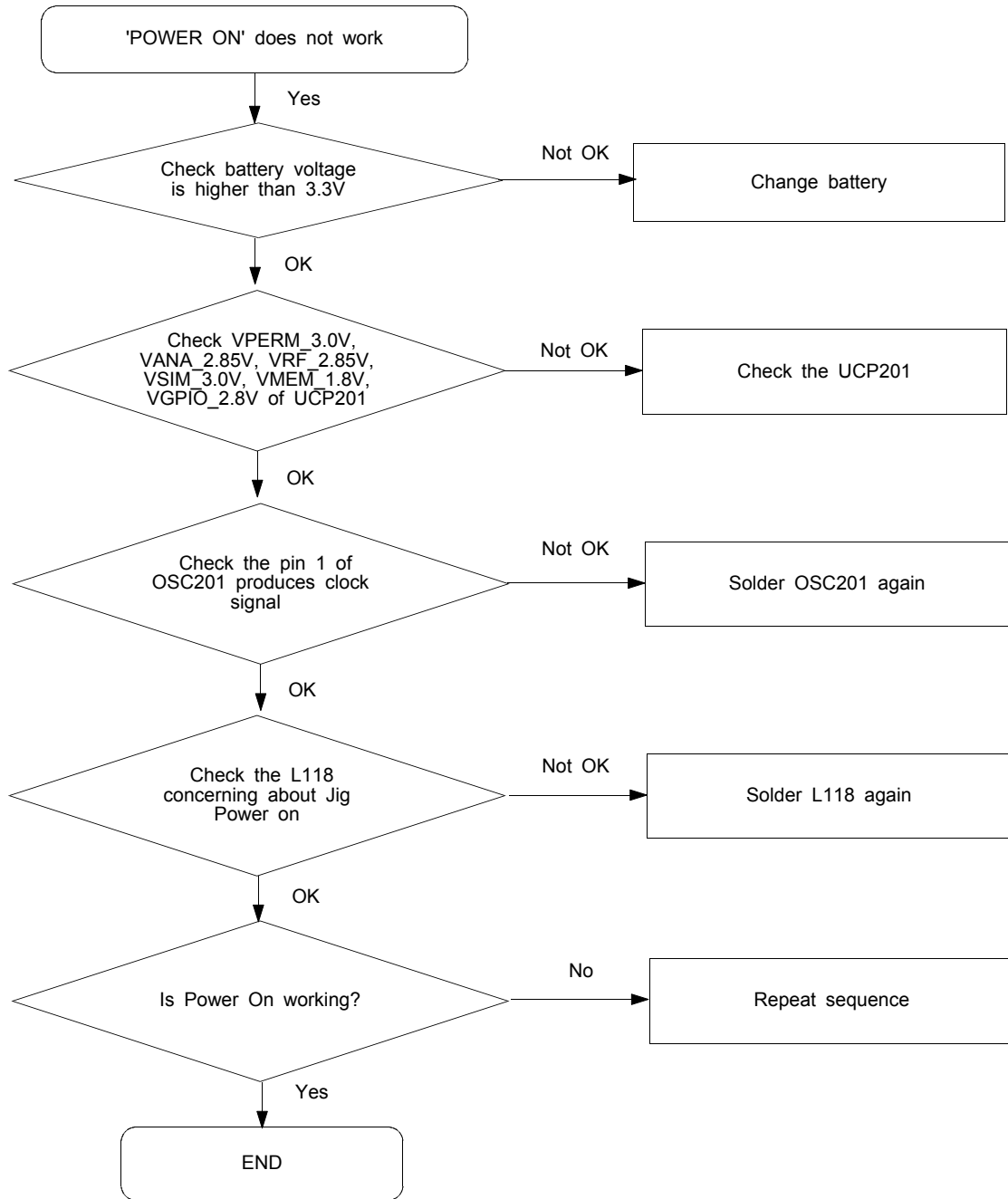
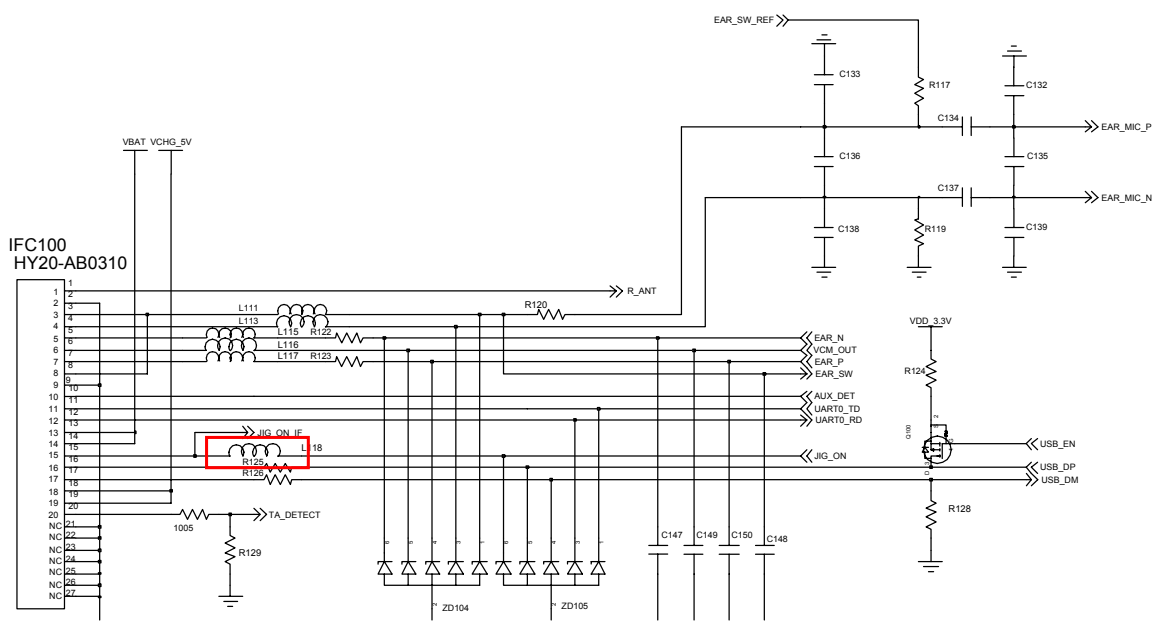
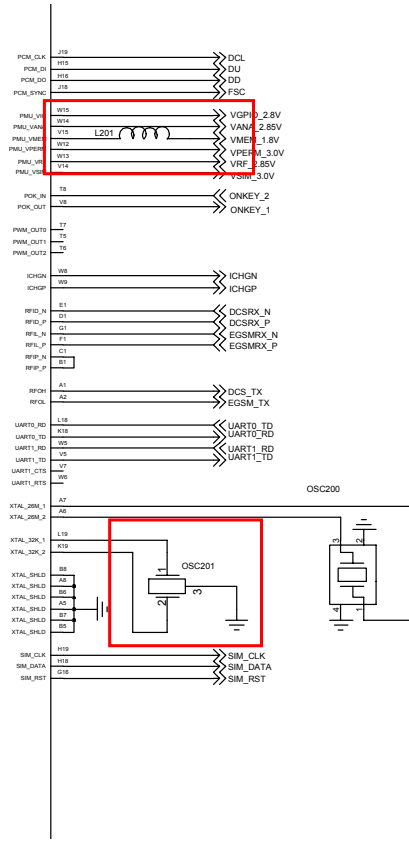


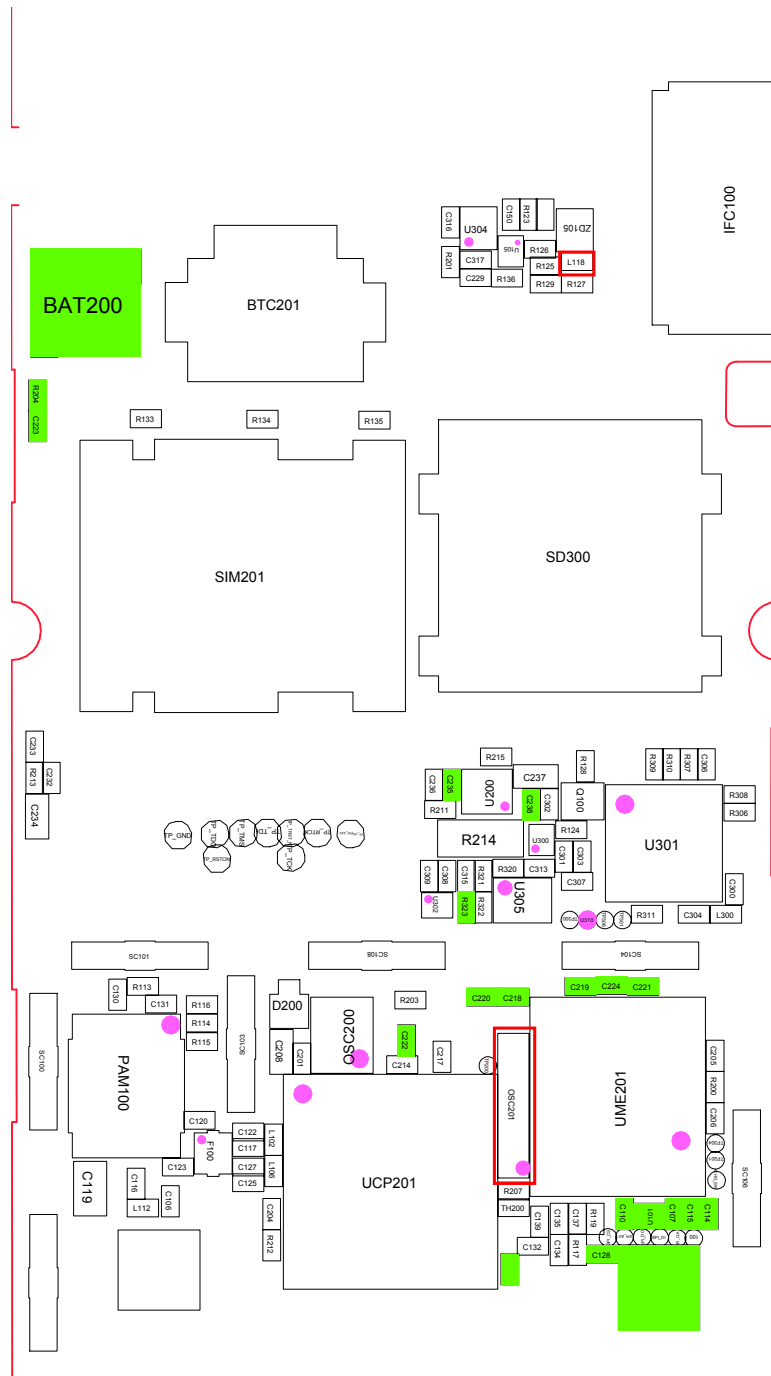
# 9. Flow Chart of Troubleshooting

## 9-1. Power On

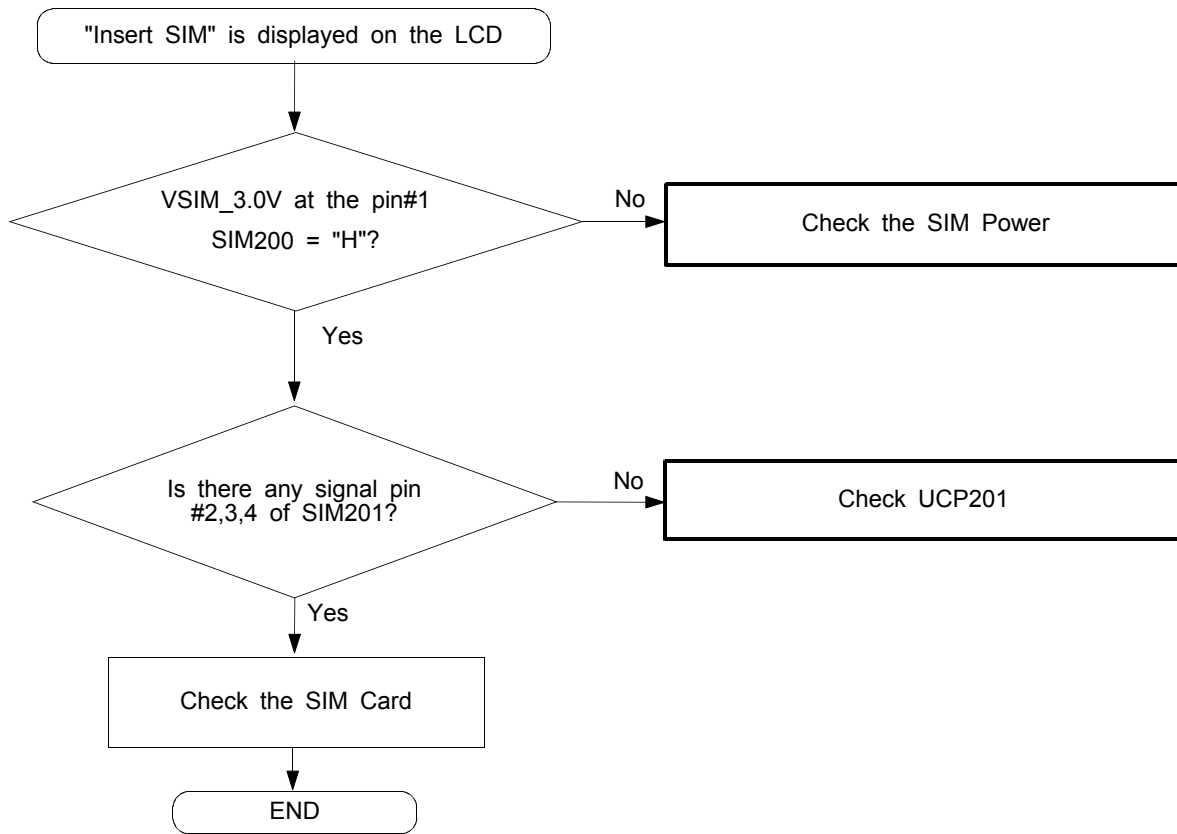


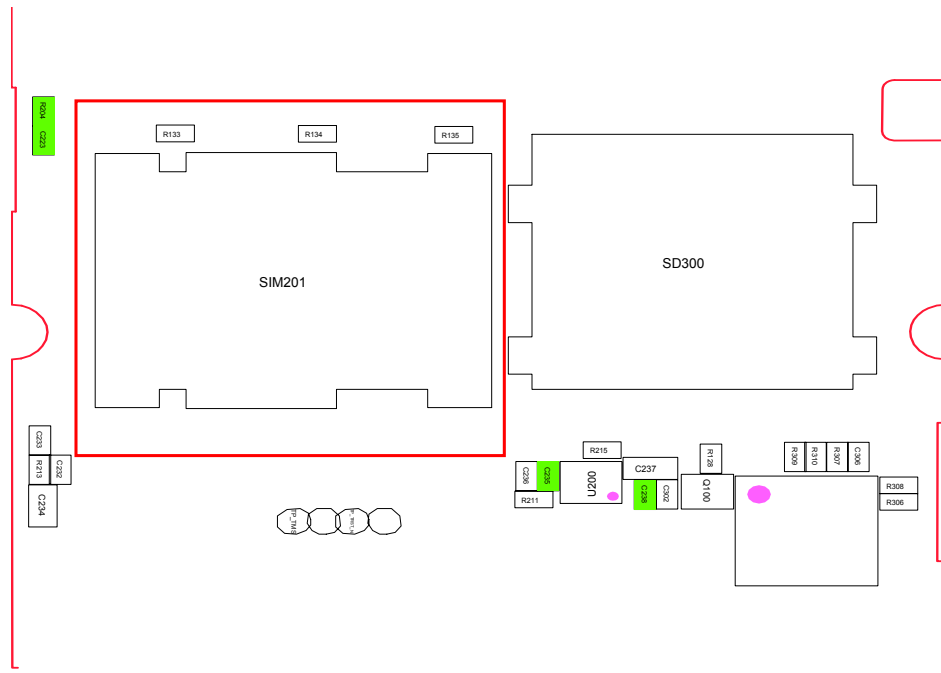
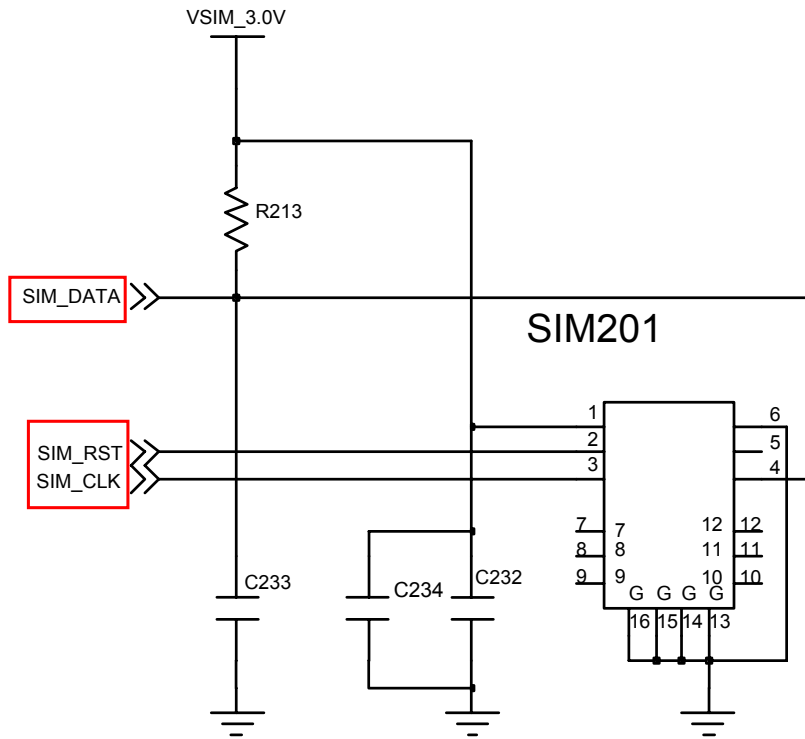
# UCP201



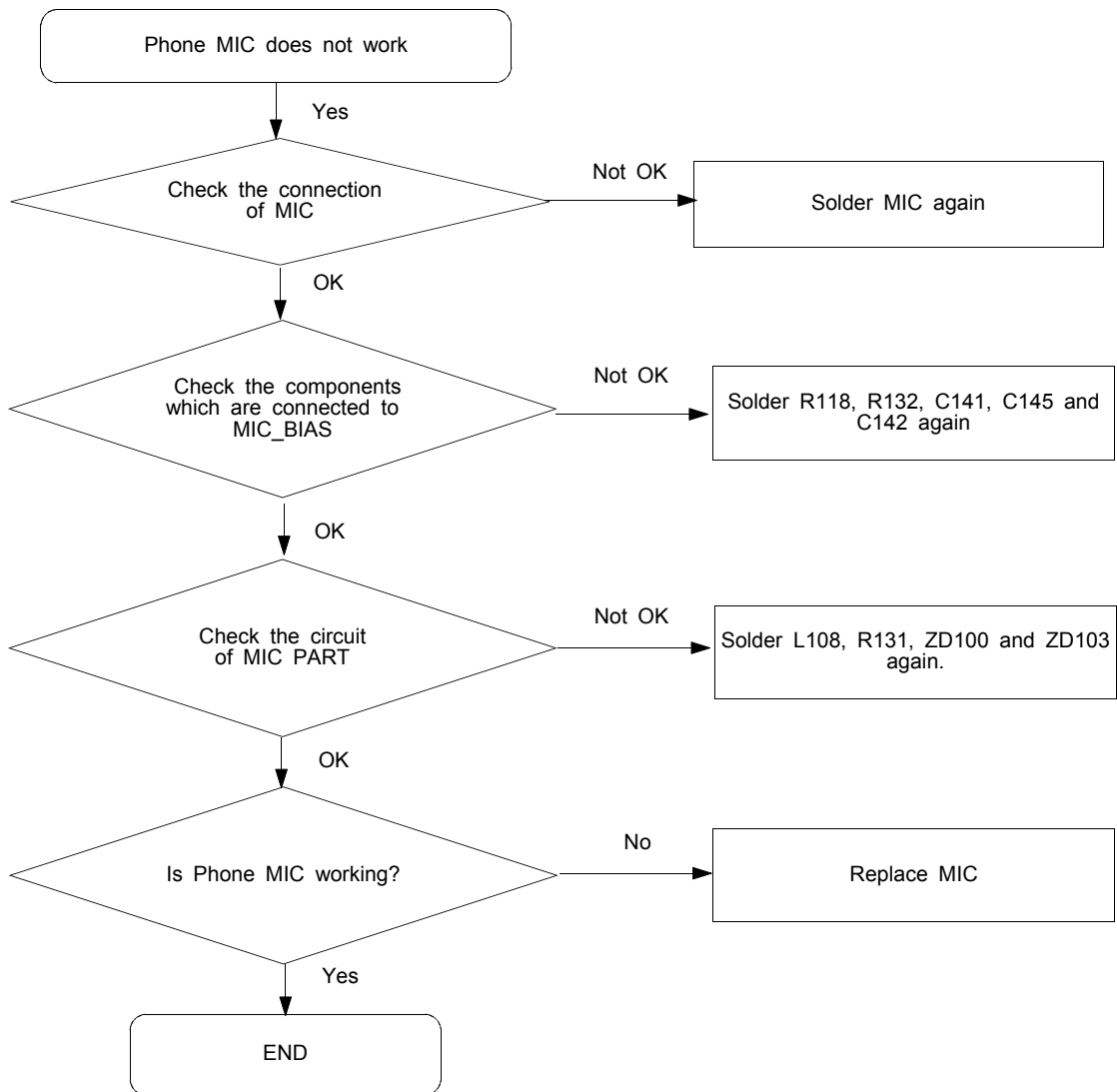


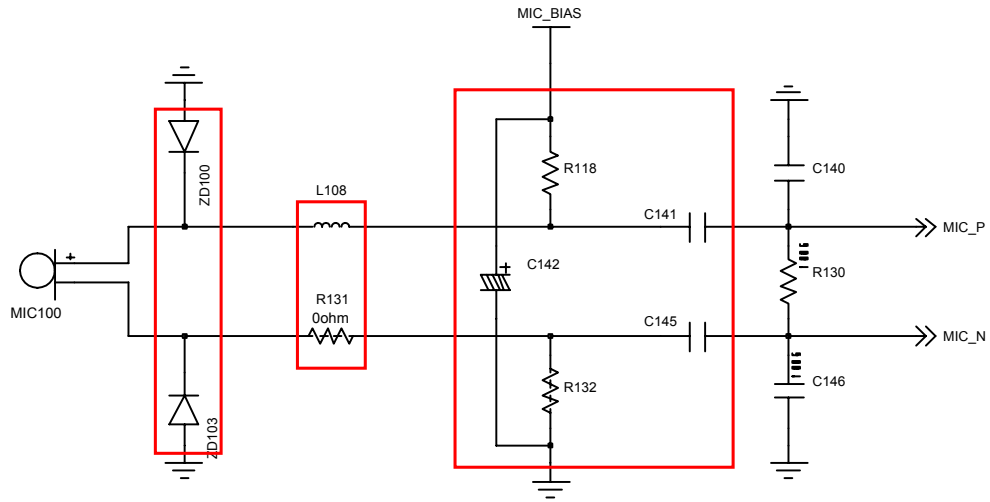
## 9-2. SIM Part



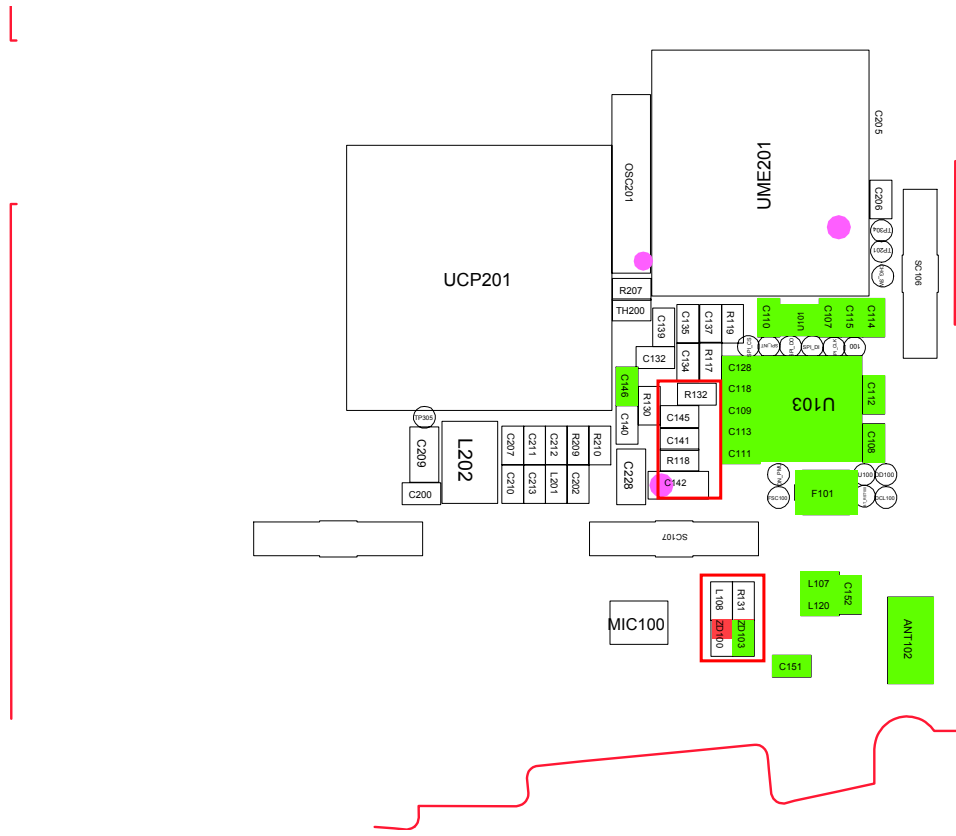


### 9-3. Microphone Part - Phone MIC

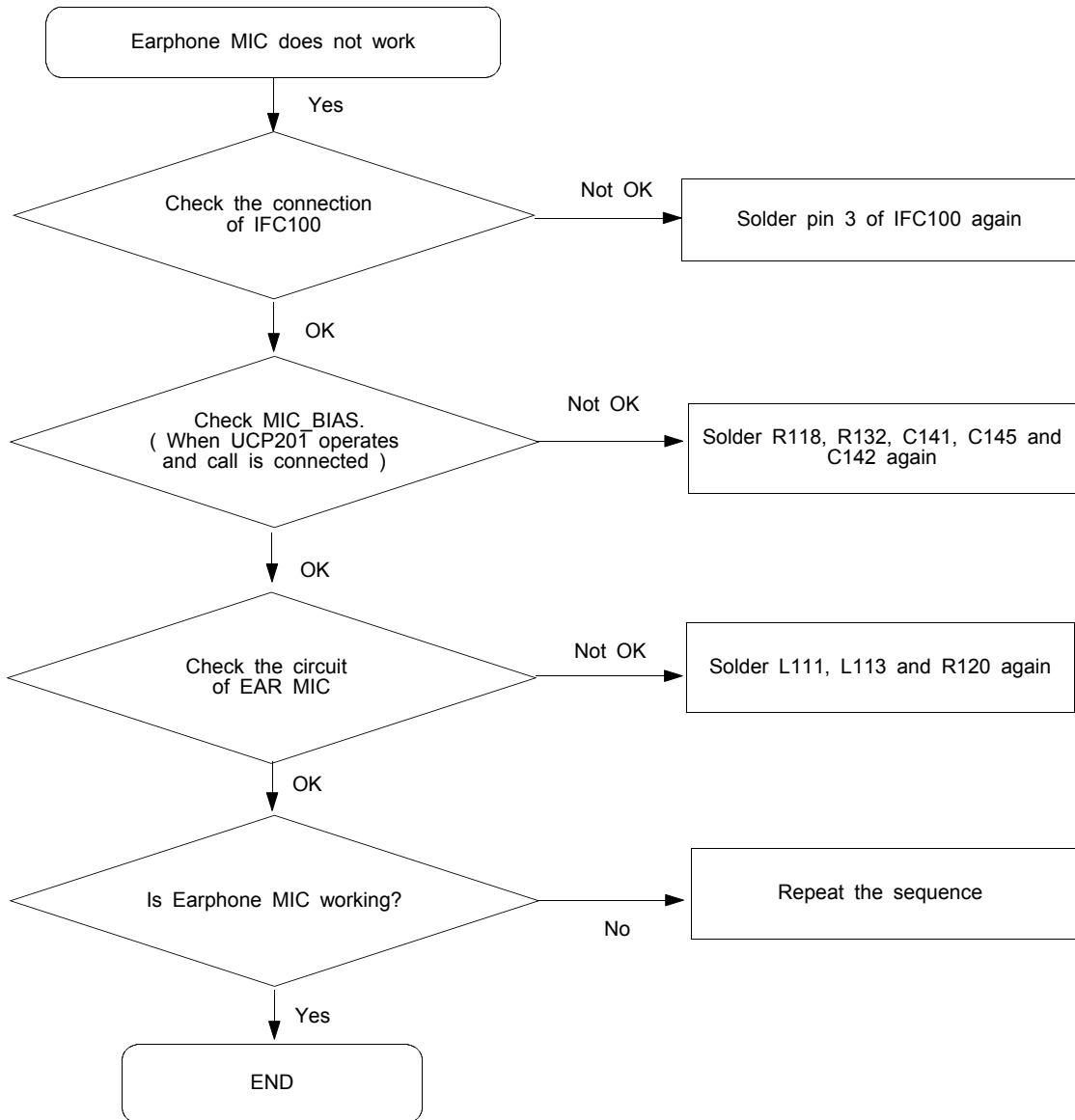




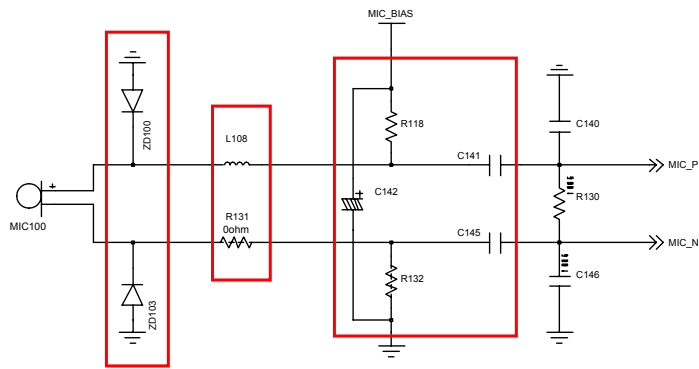
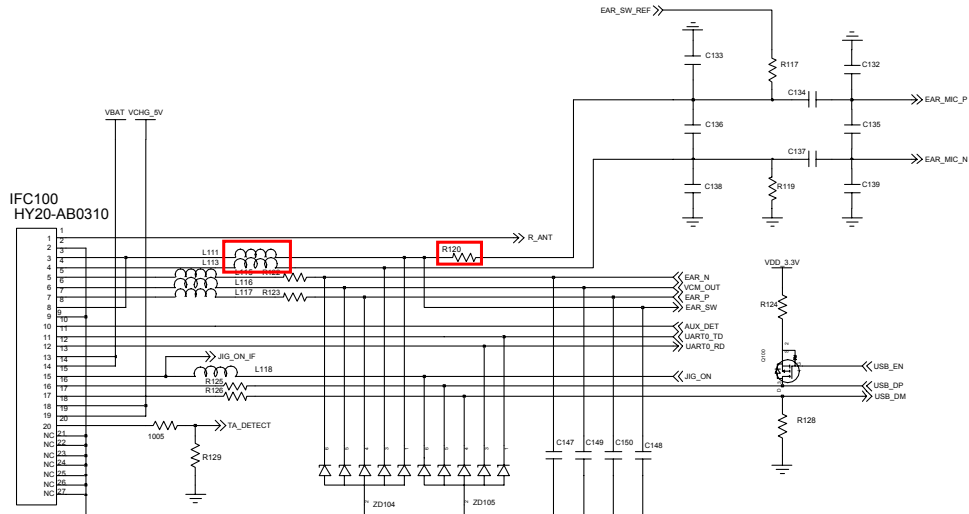
# MAIN\_MIC



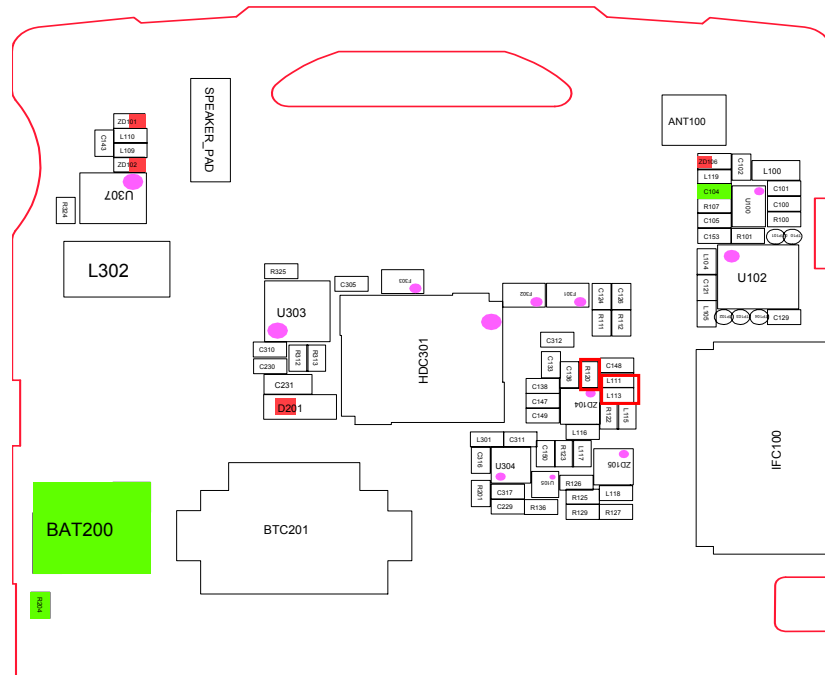
### 9-4. Microphone Part - Earphone MIC



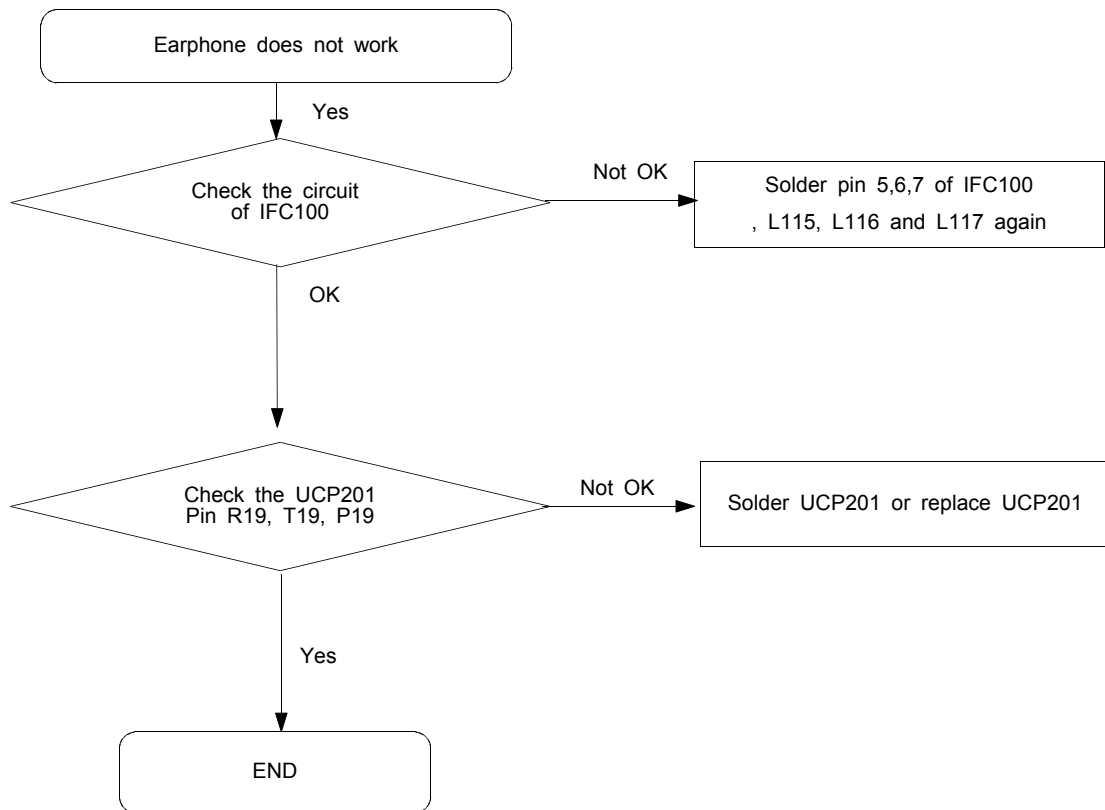




MAIN\_MIC

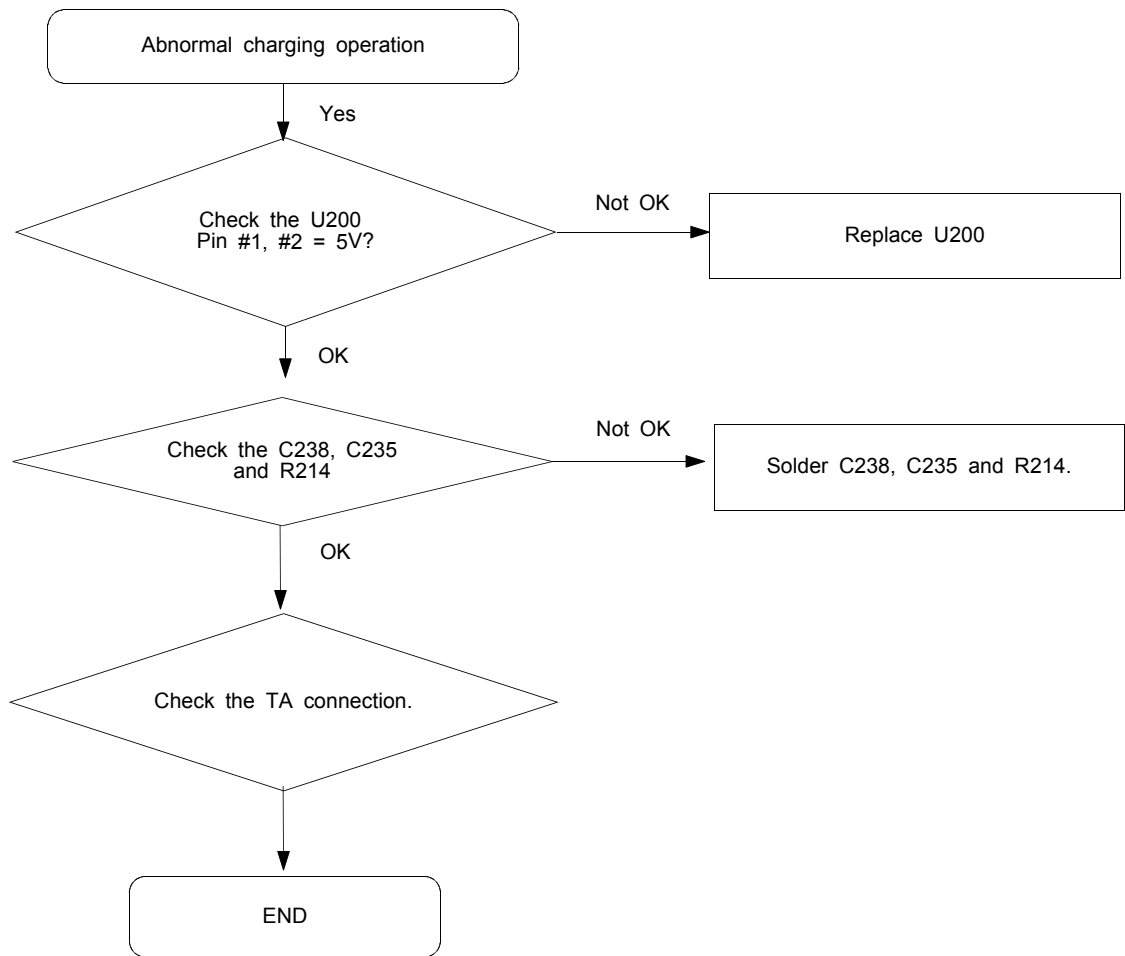


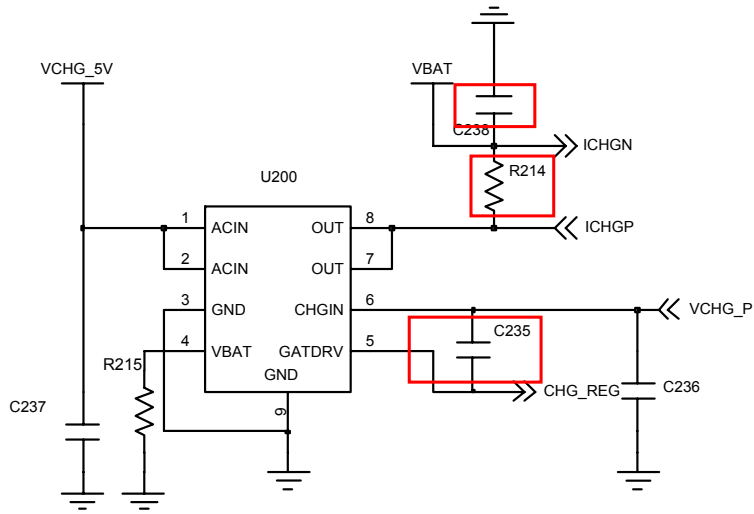
## 9-5. Earphone Part



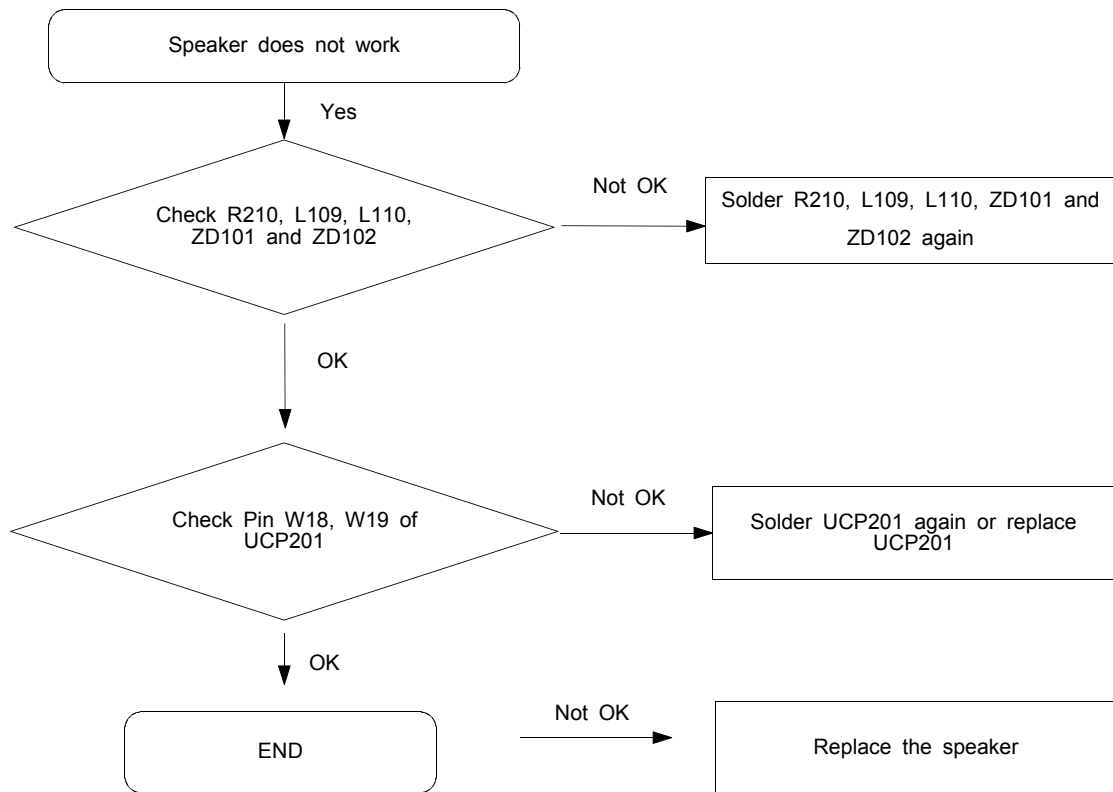


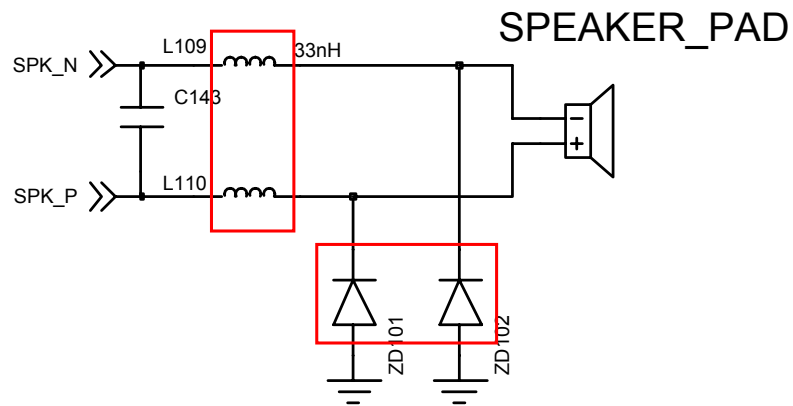
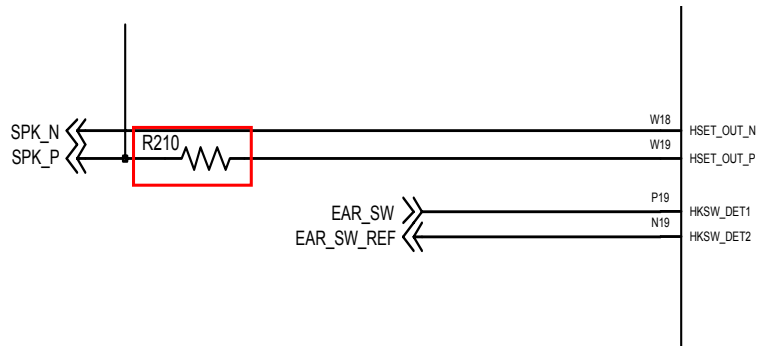
### 9-6. Charging Part





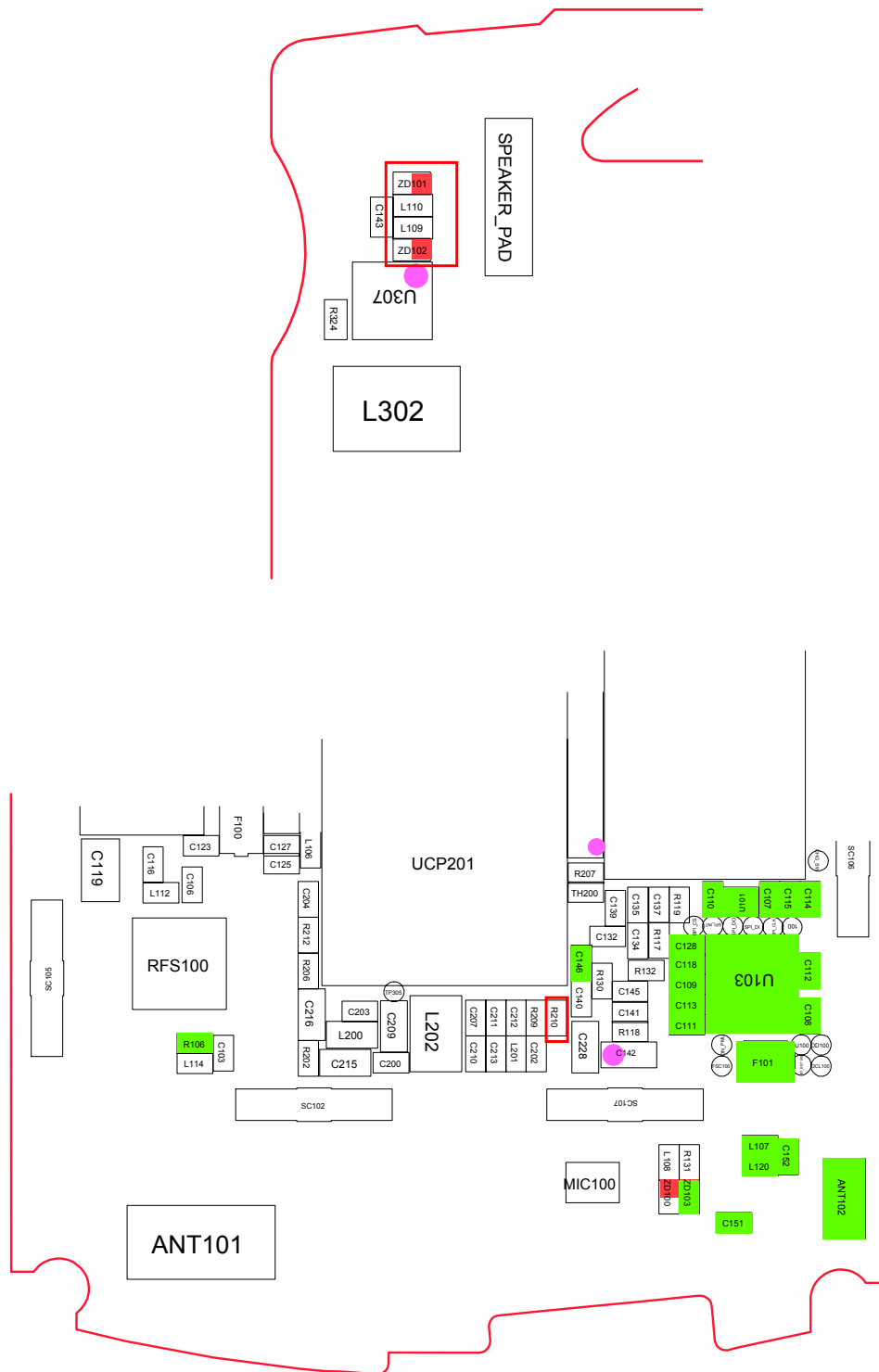
## 9-7. Speaker Part



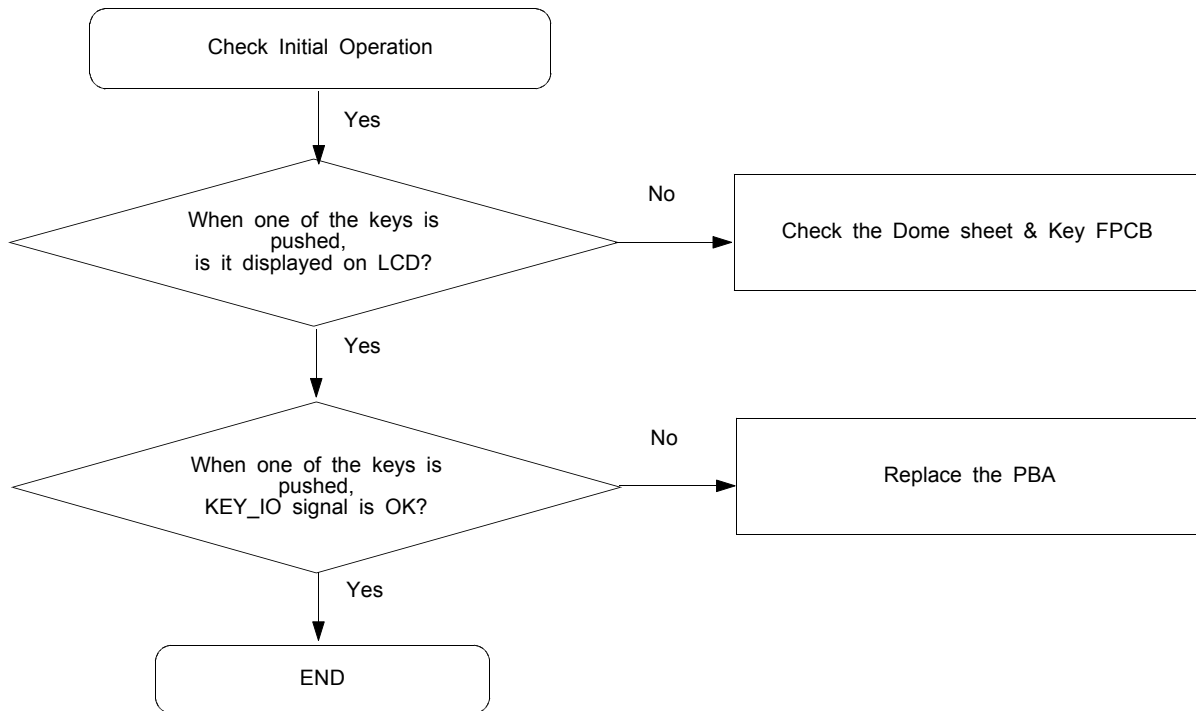


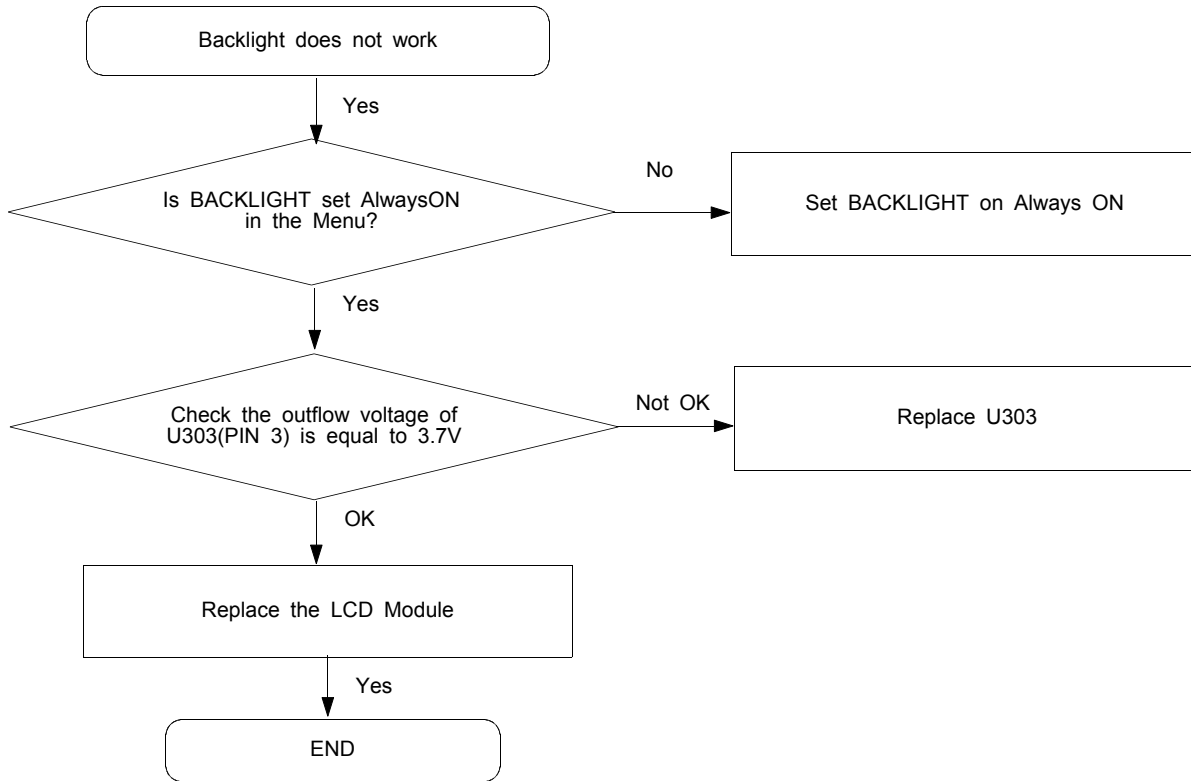
**SPEAKER**

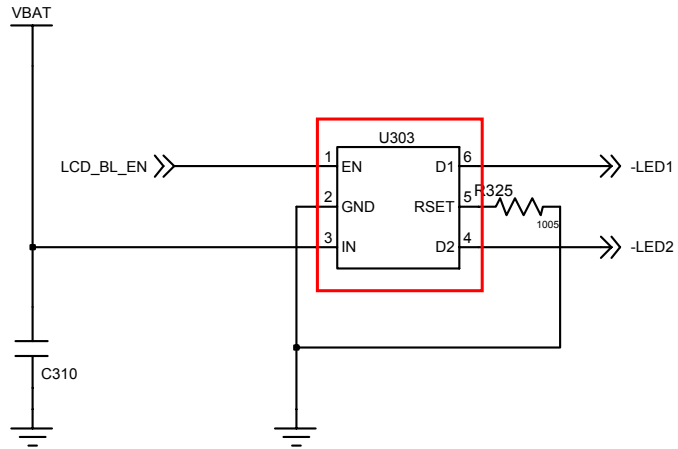


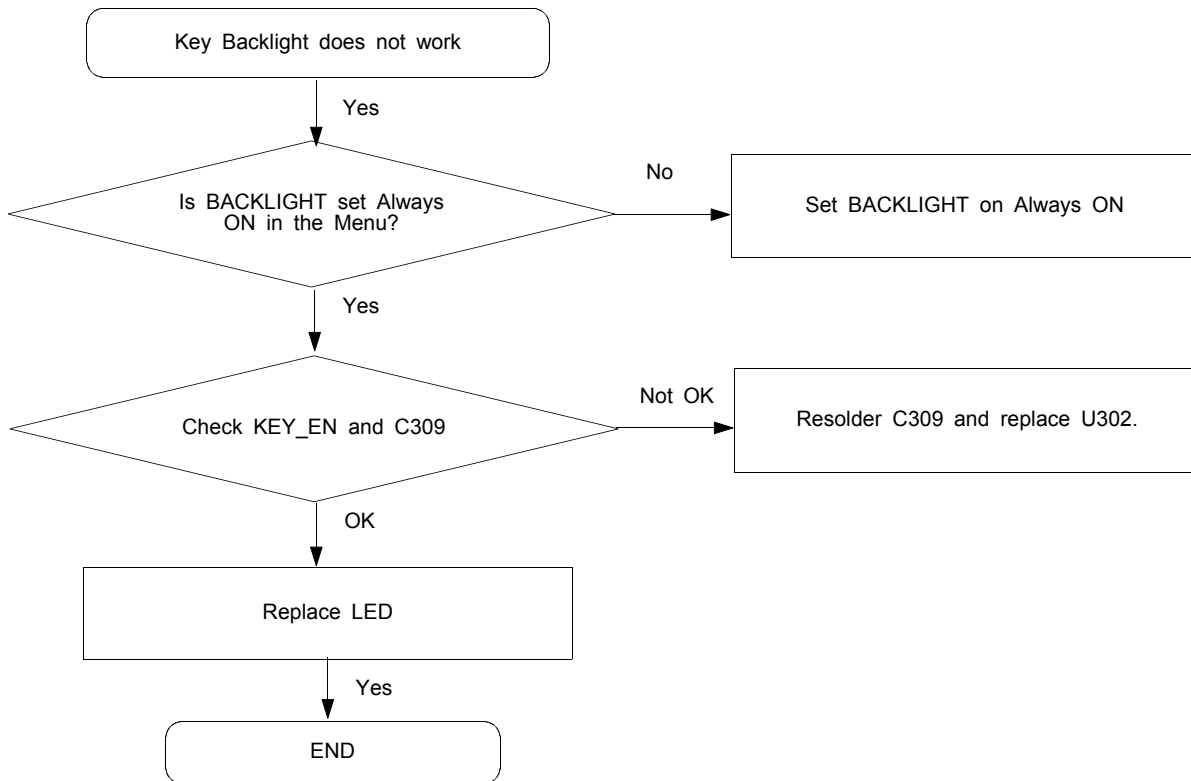


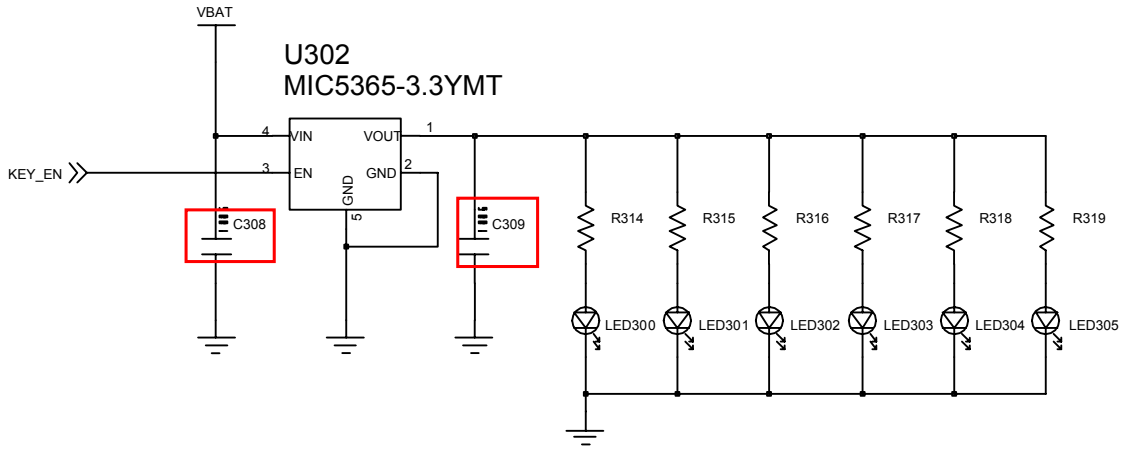
### 9-8. Key Data Input



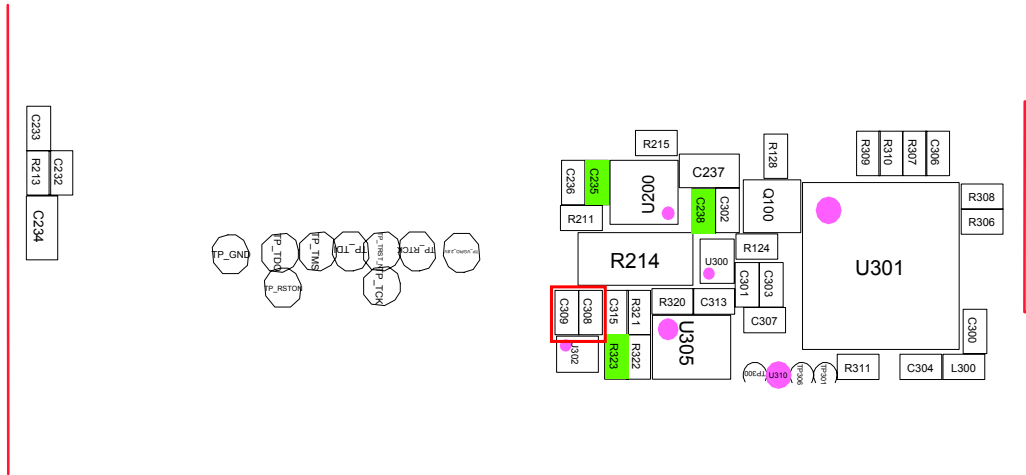
**9-9. Back Light (for Color Main LCD)**



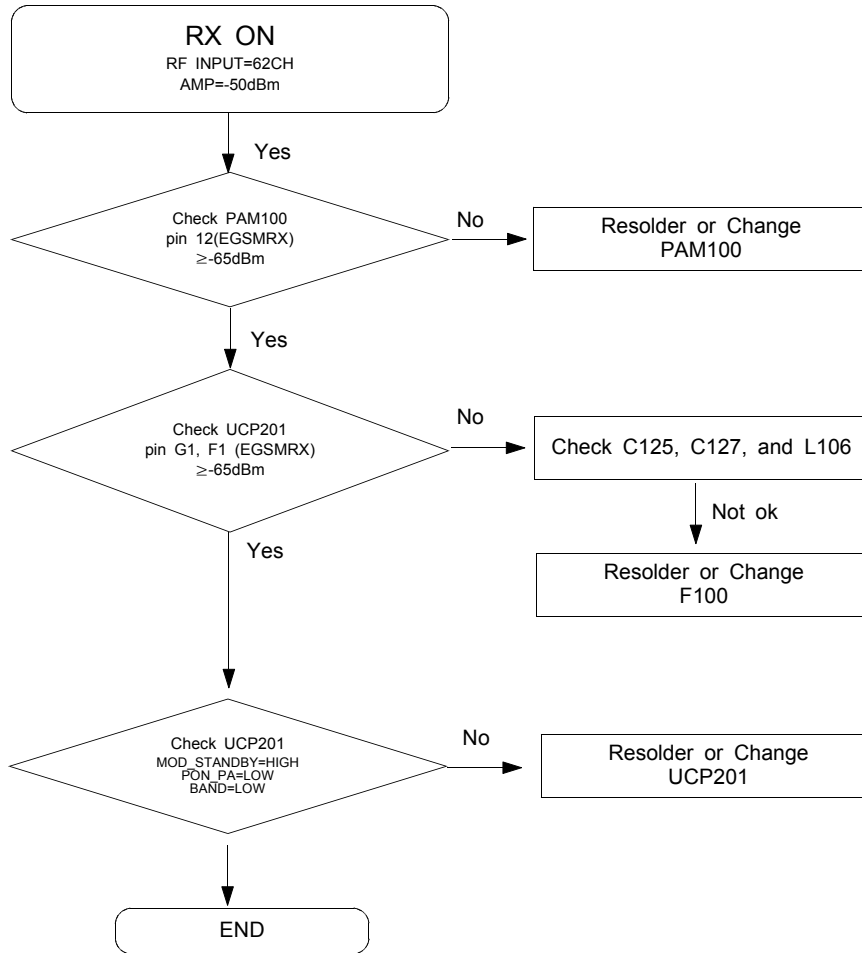
**9-10. Key Back Light**



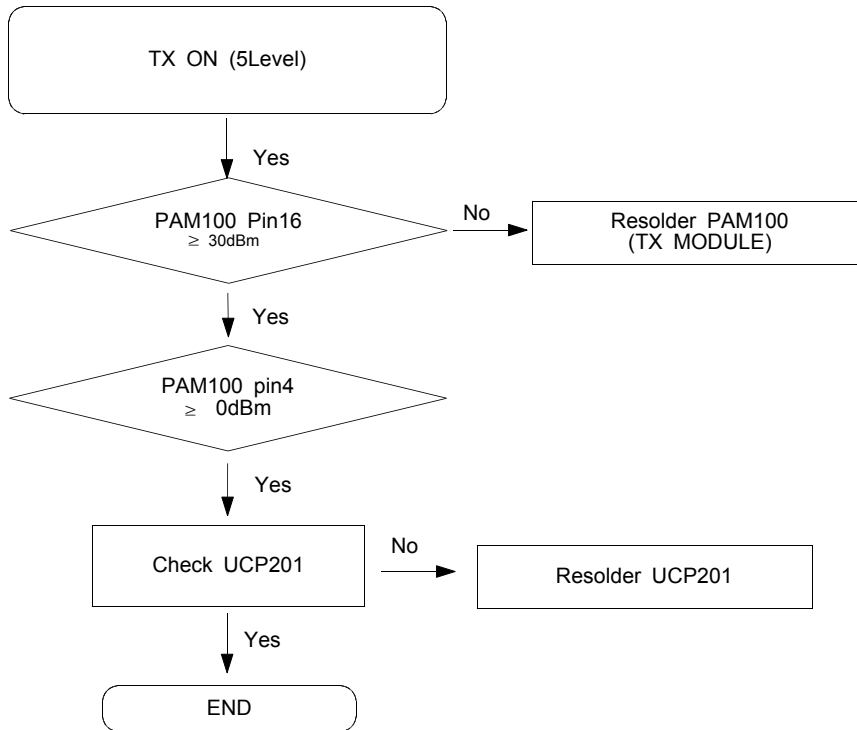
# KEY LED



9-11. GSM Receiver

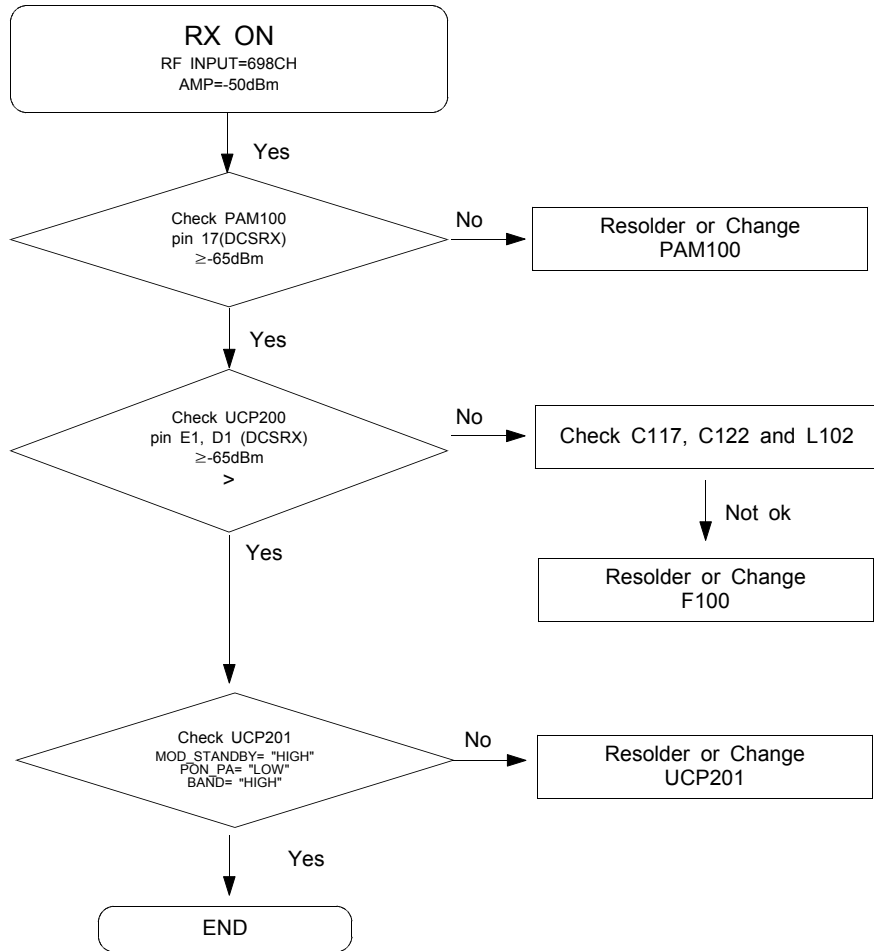


### 9-12. GSM Transmitter

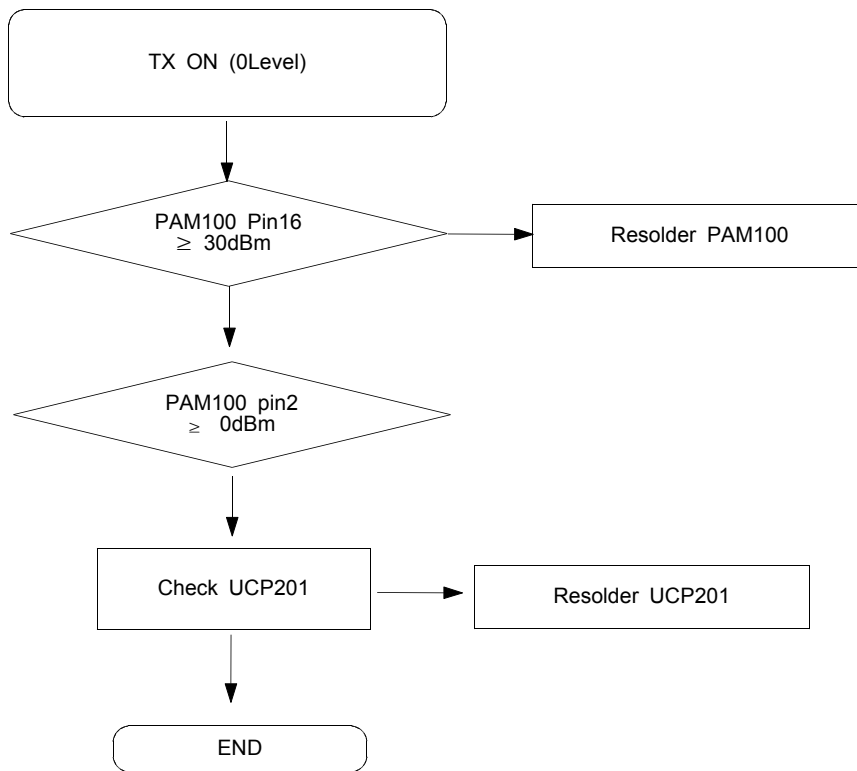


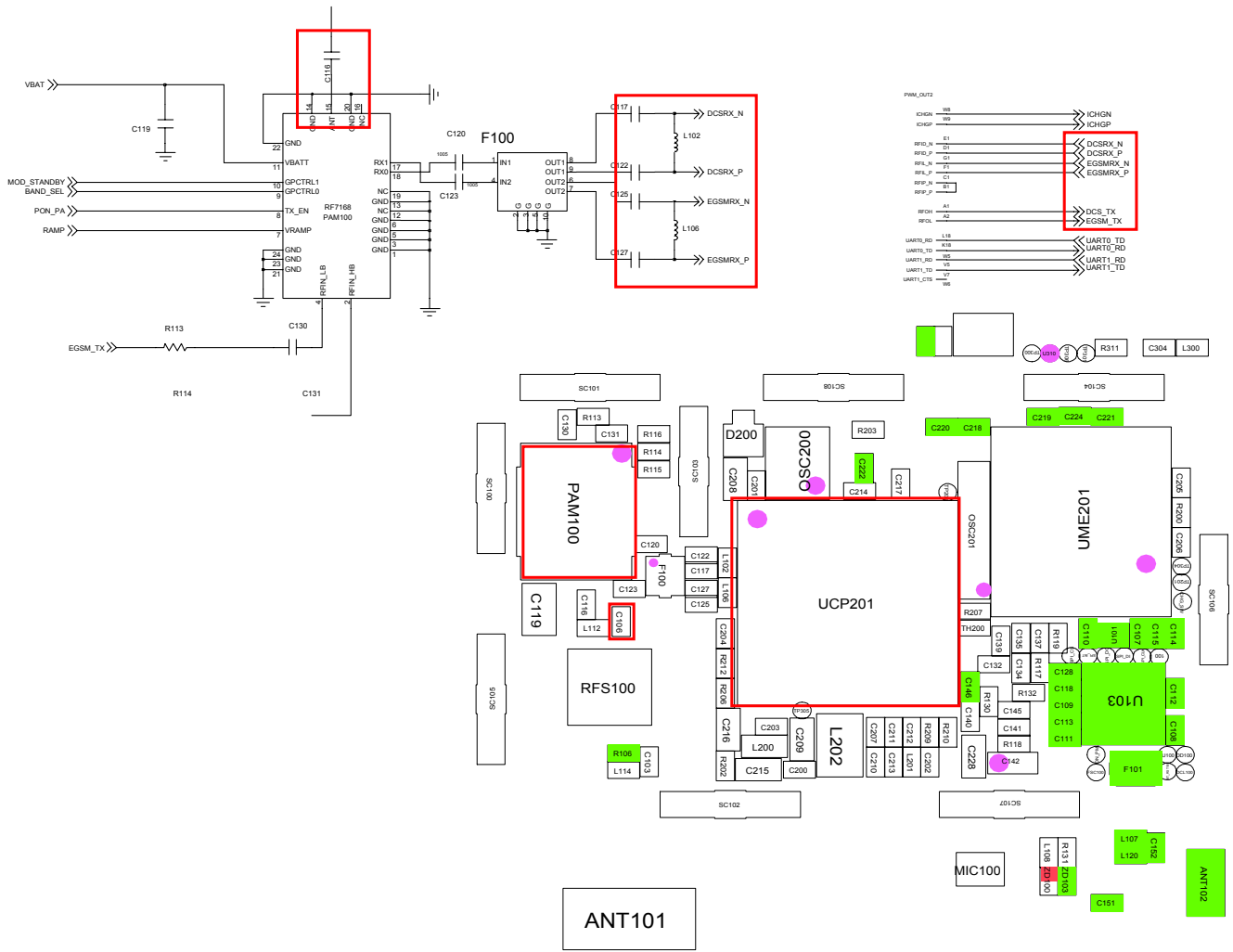


9-13. DCS Receiver

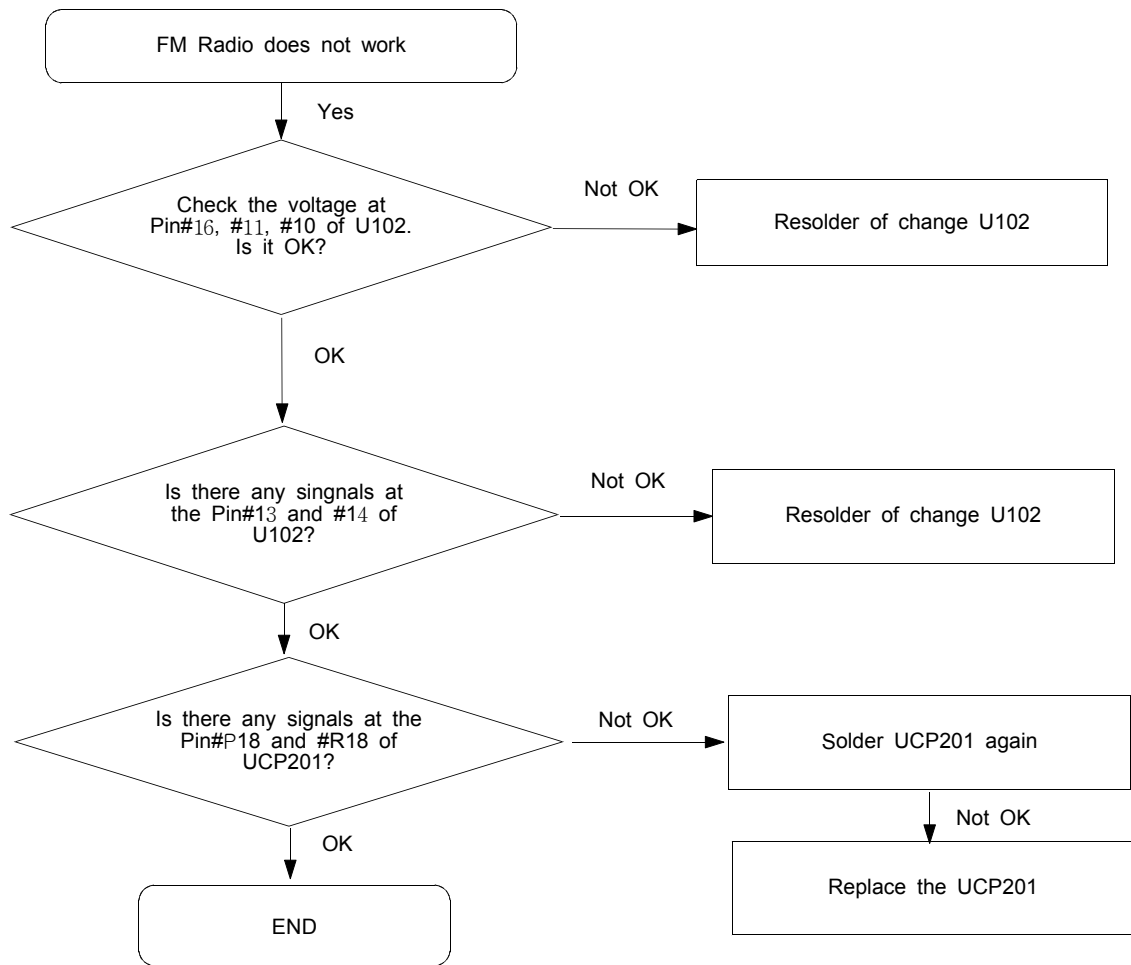


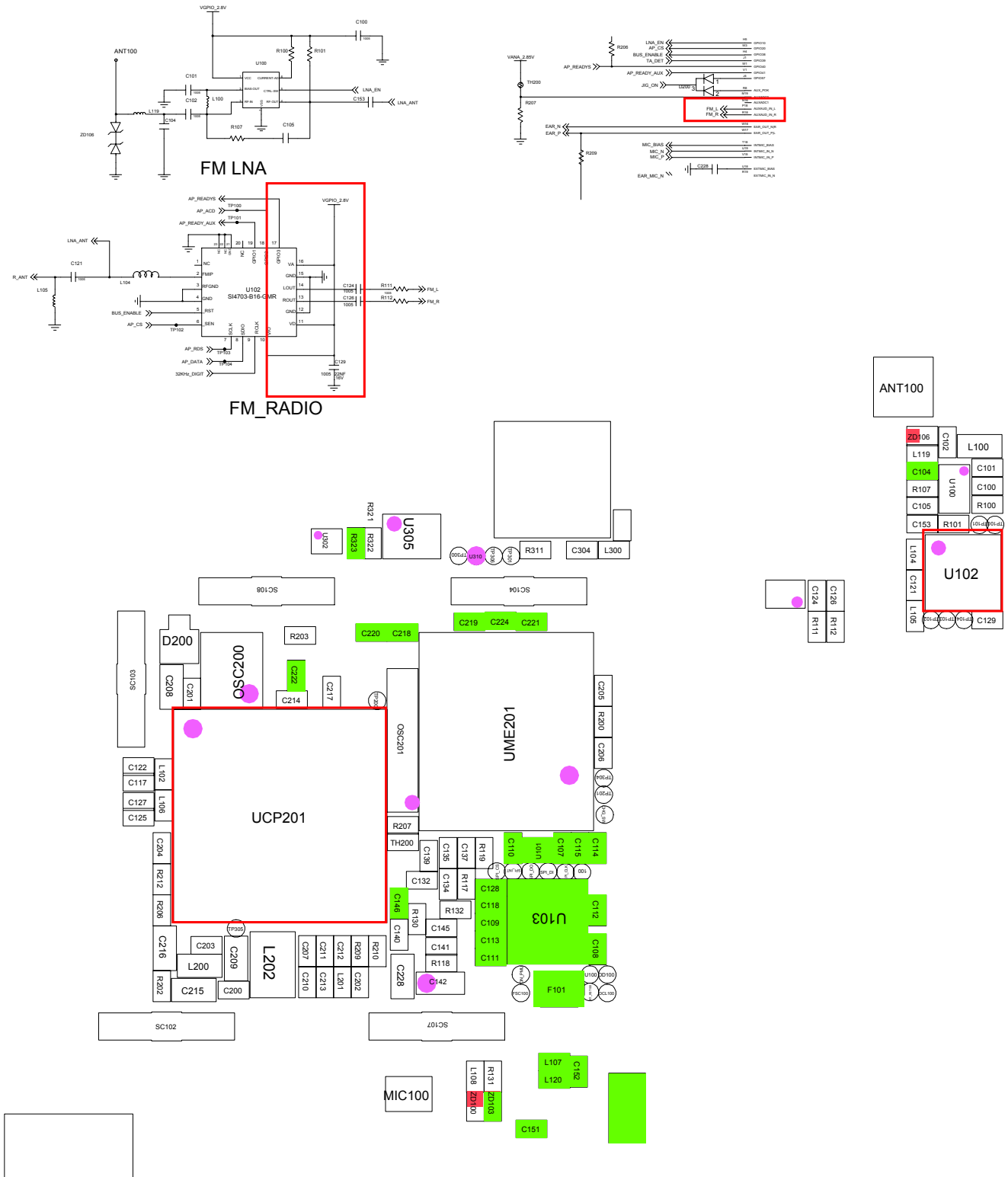
### 9-14. DCS Transmitter





### 9-15. FM Radio Part

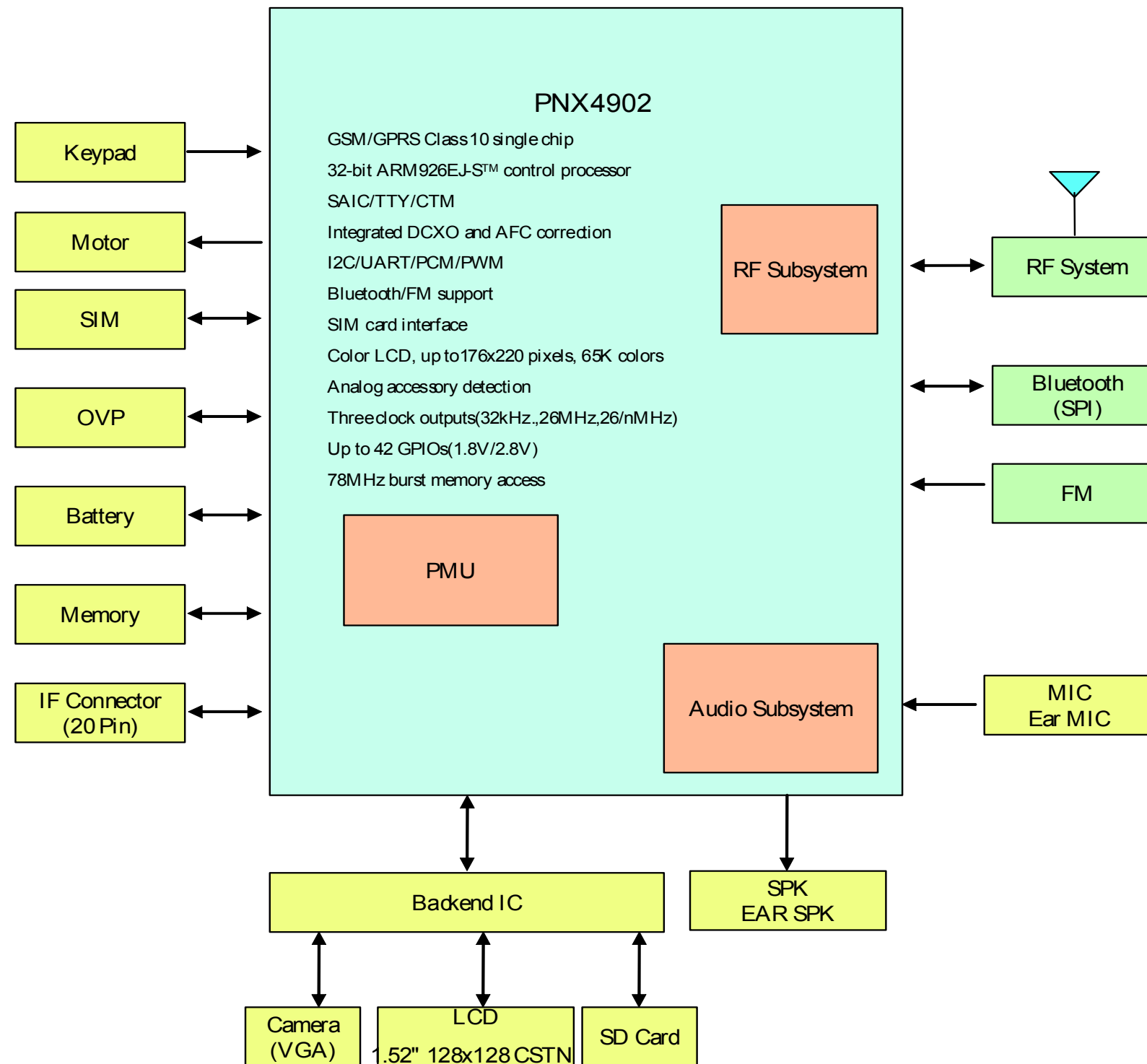




## 7. Block Diagrams

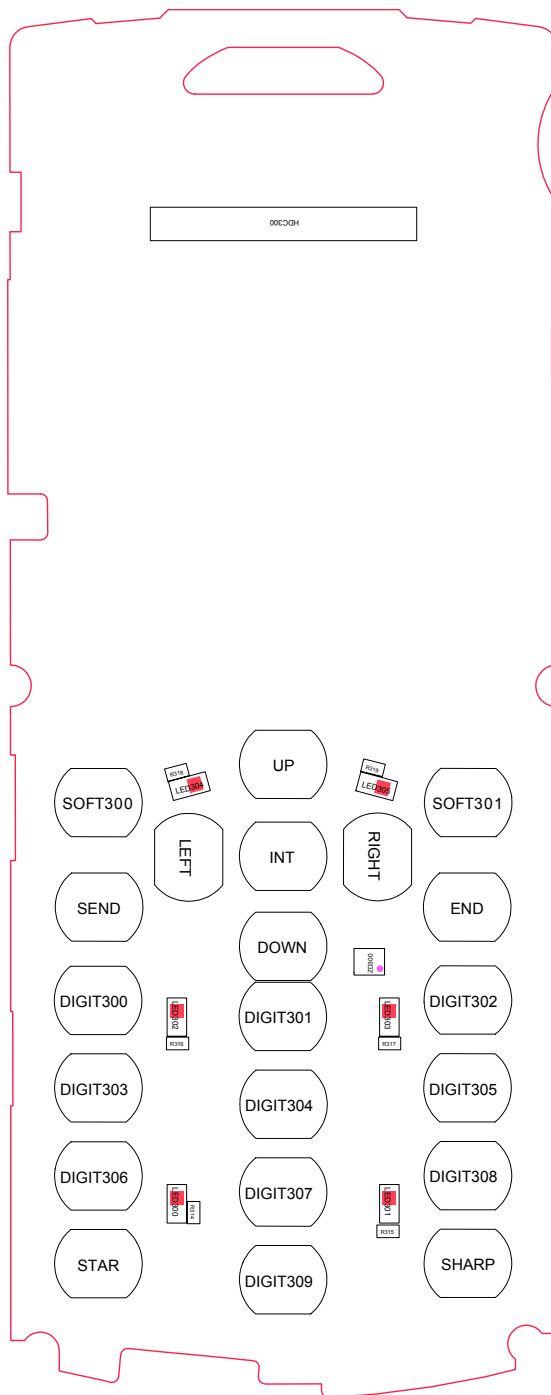
### 7-1. Main Block Diagram

# GT-E2120 BLOCK DIAGRAM



## 8. PCB Diagrams

Top



Bottom

