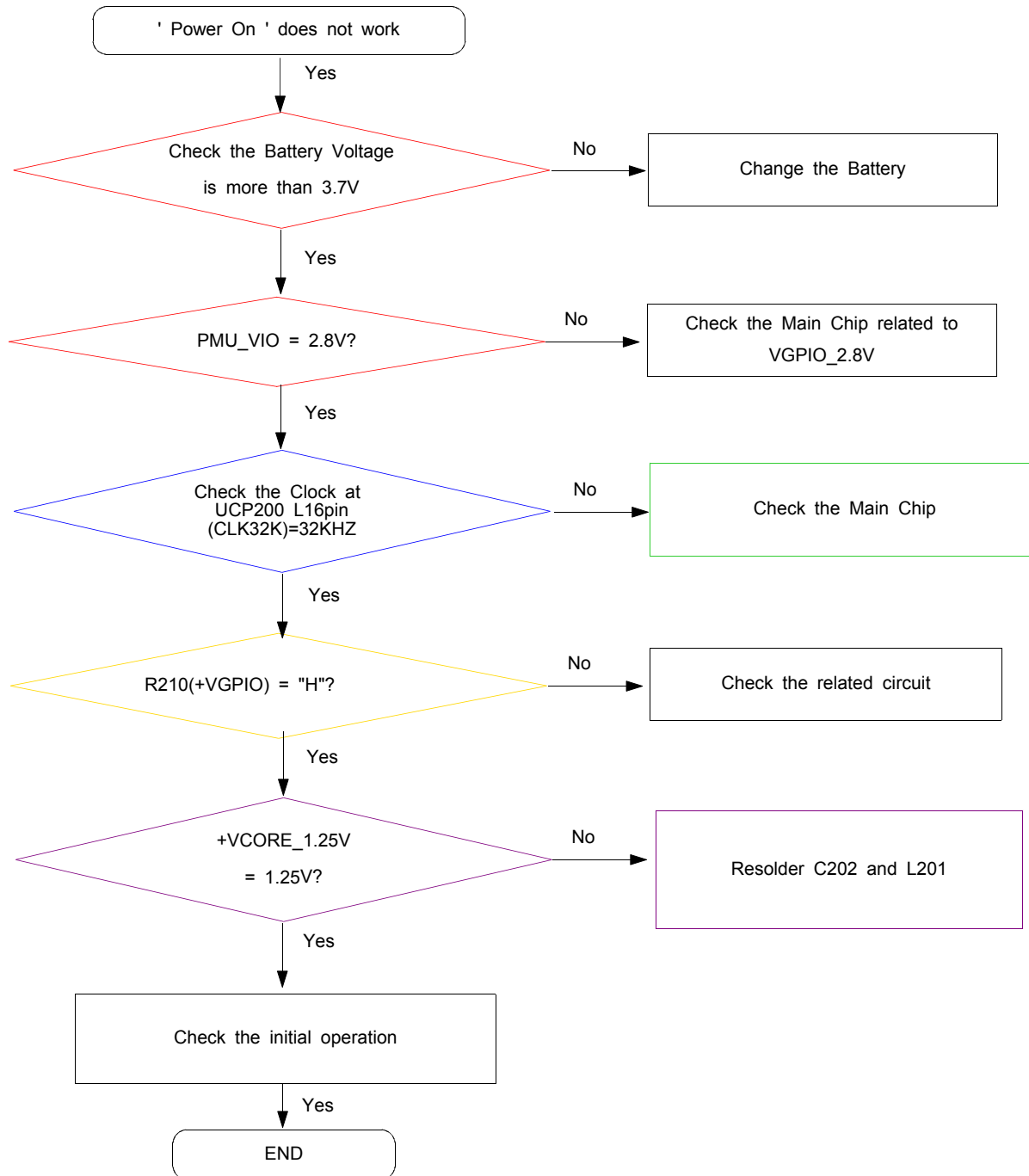
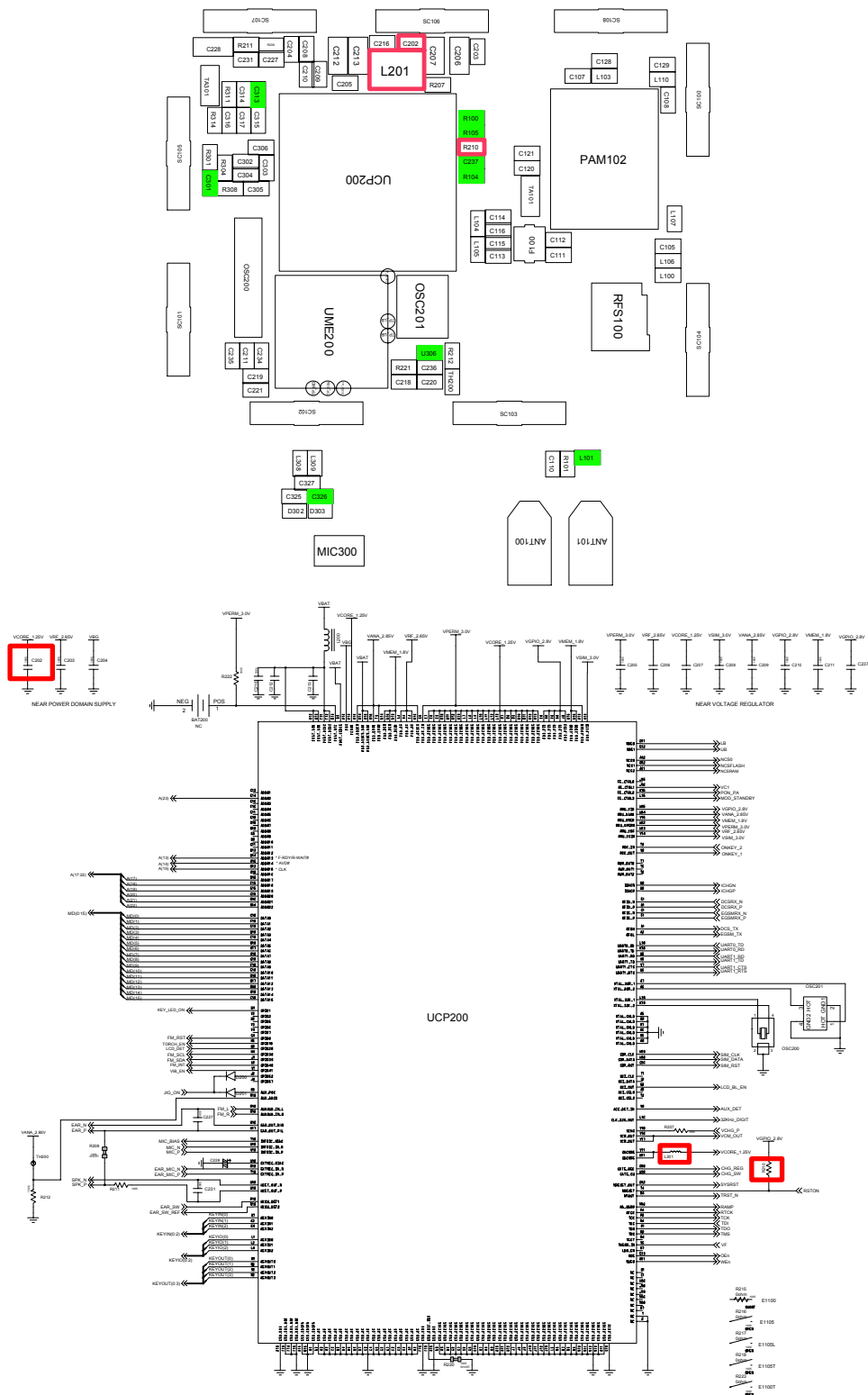


9. Flow Chart of Troubleshooting

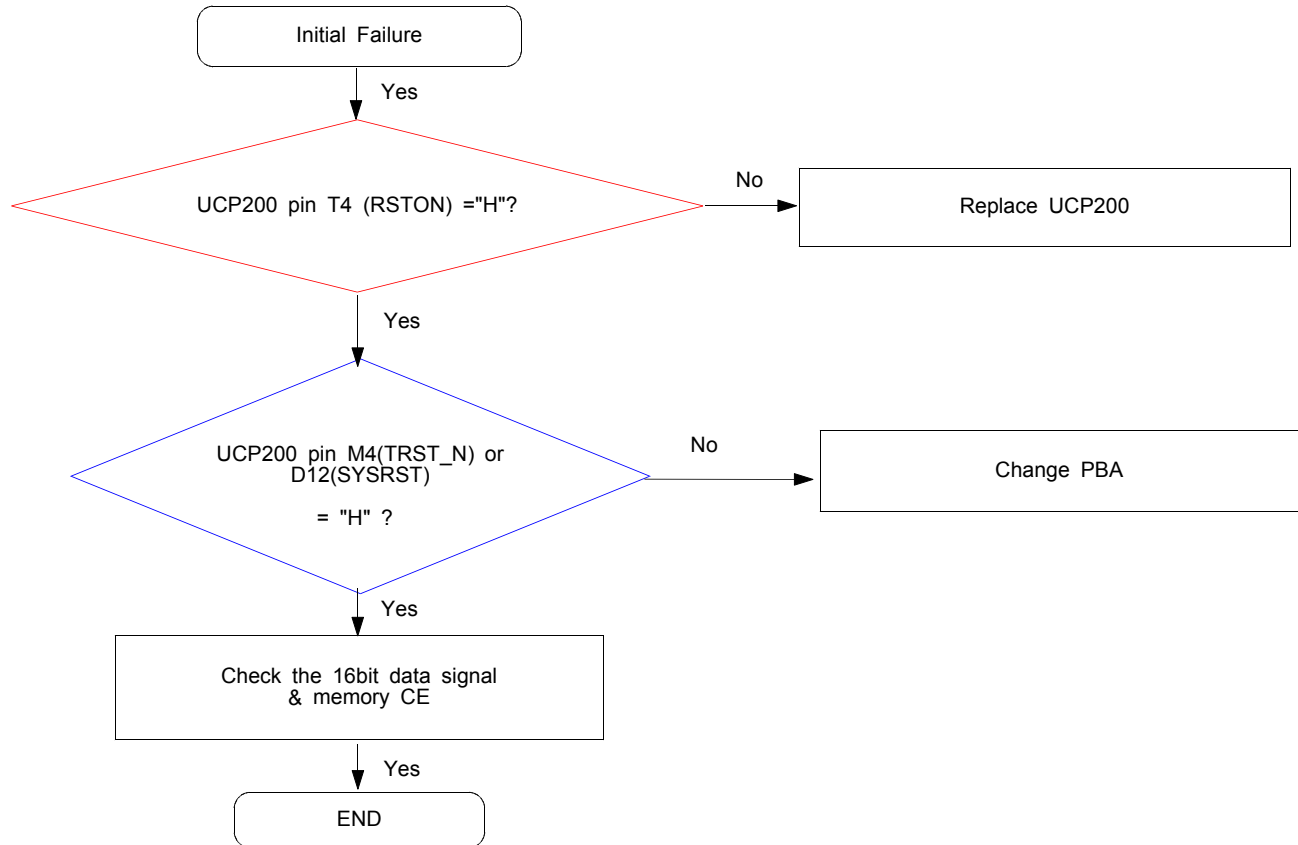
9-1. Power On



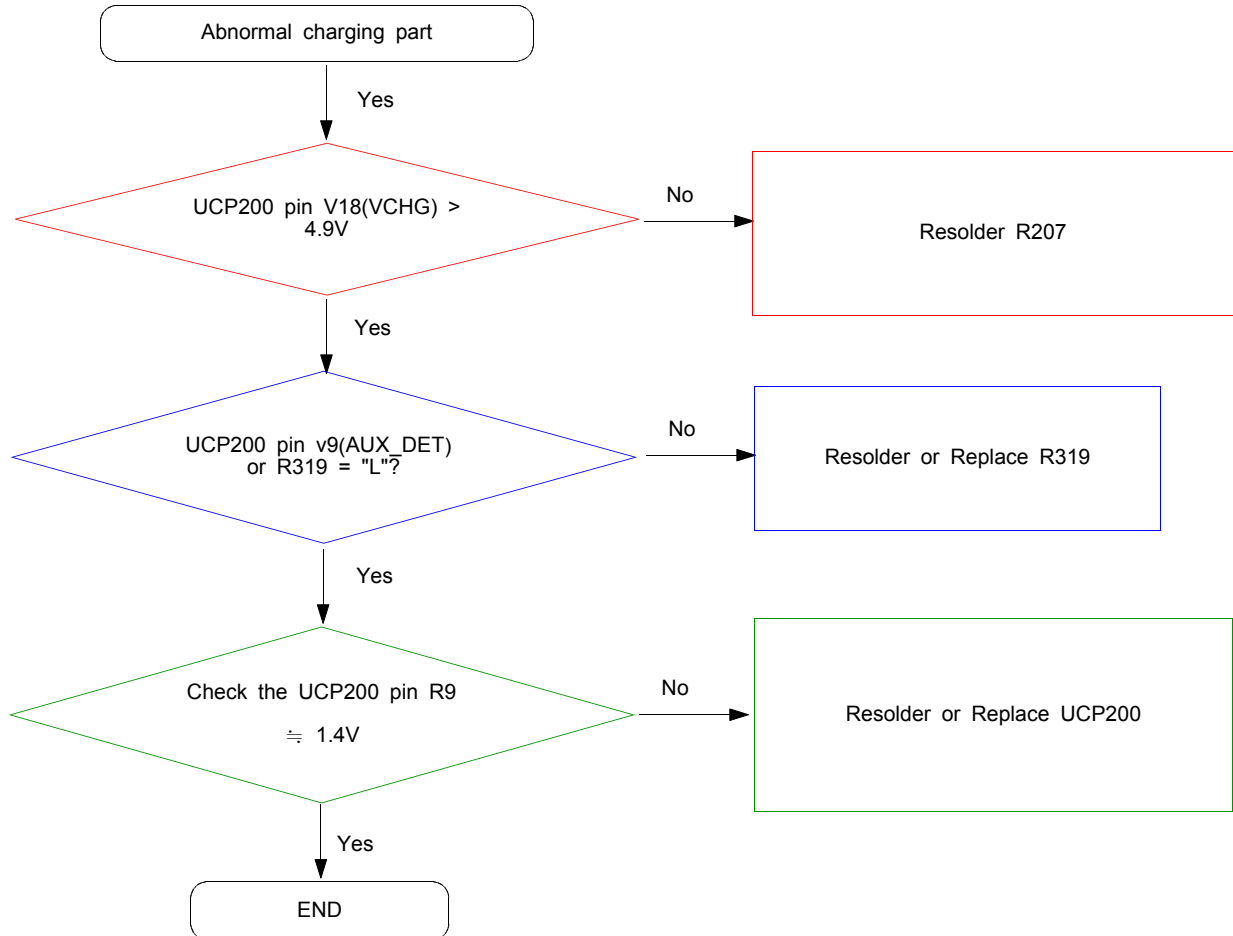
Flow Chart of Troubleshooting



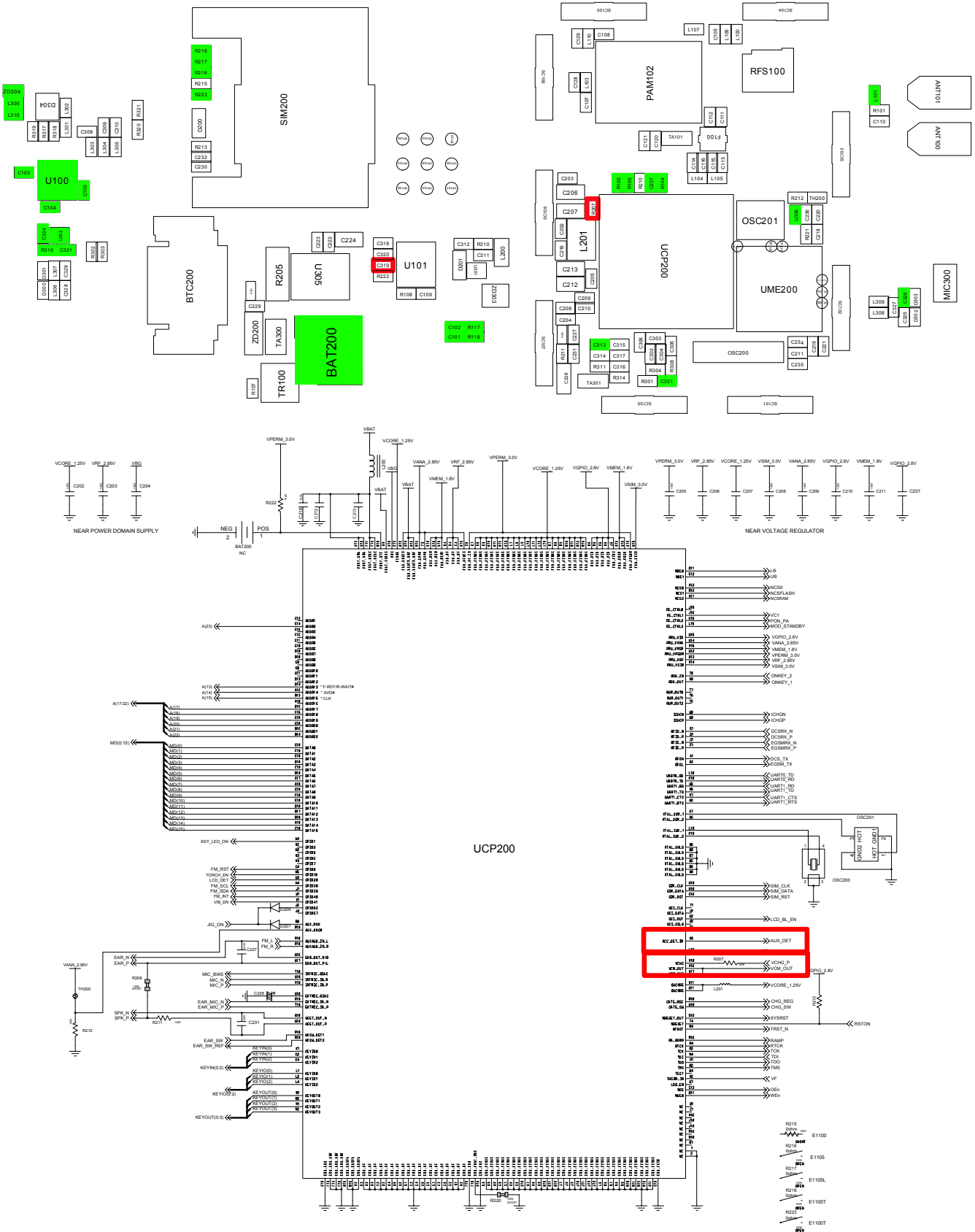
9-2. Initial



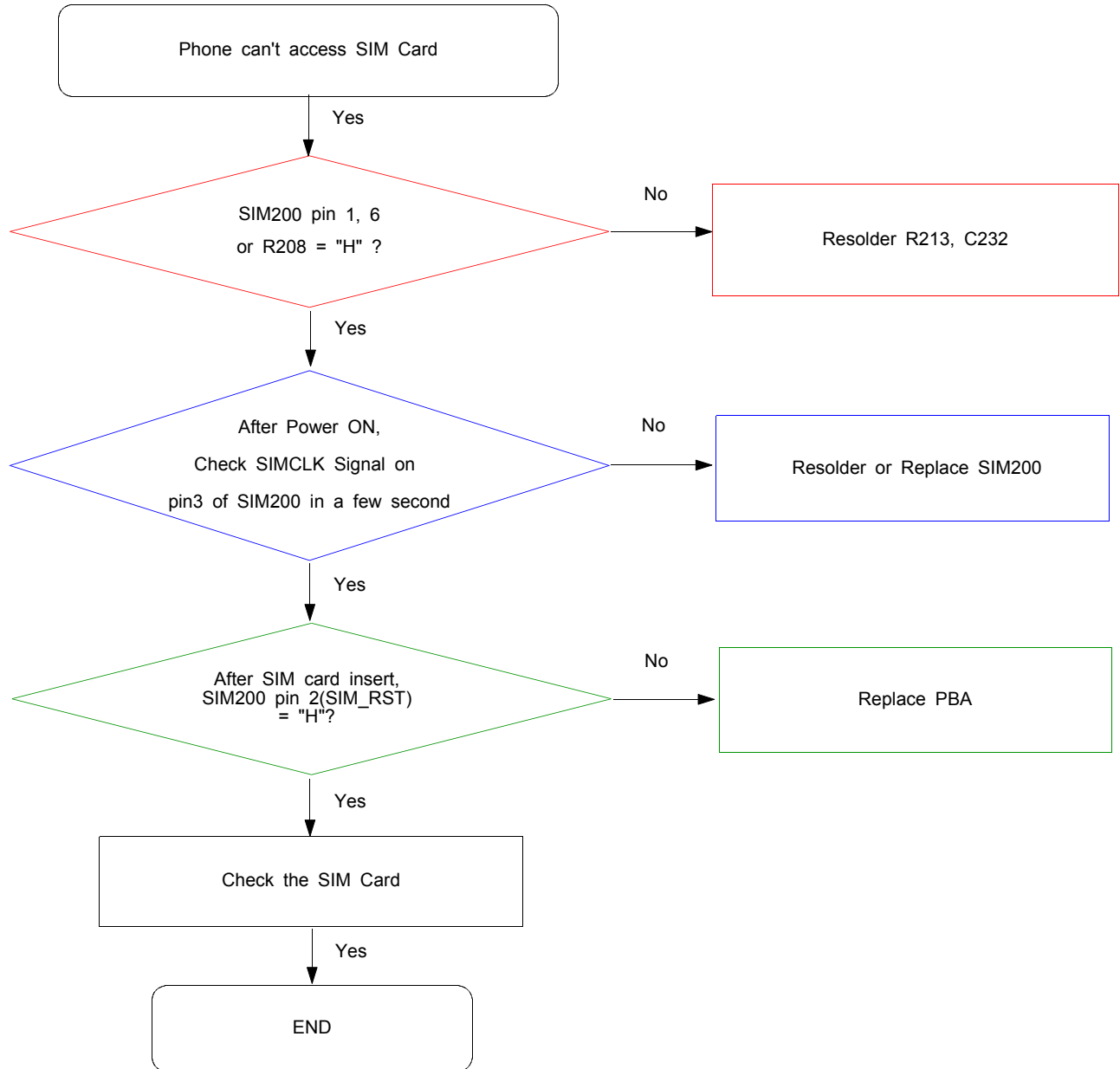
9-3. Charging Part



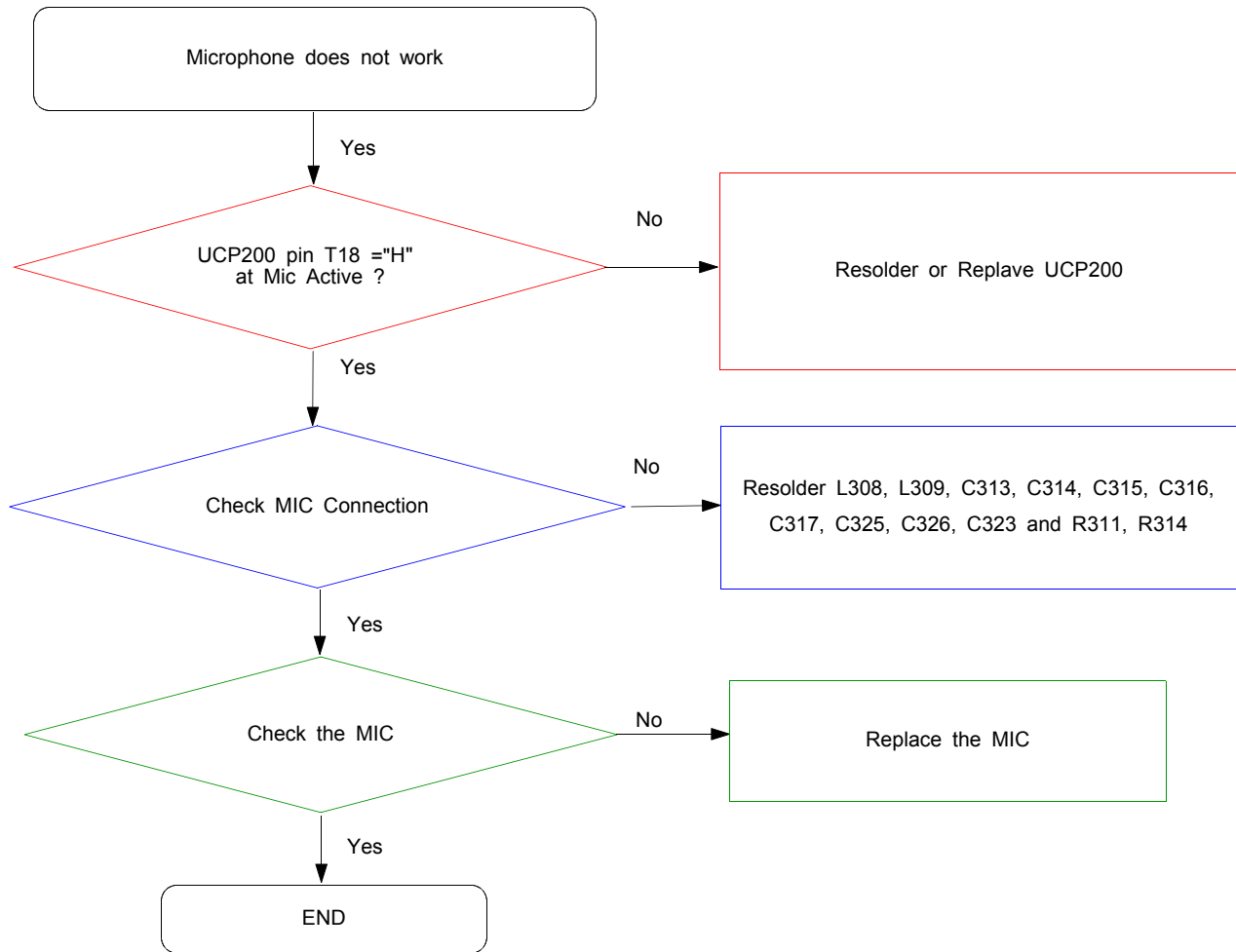
Flow Chart of Troubleshooting

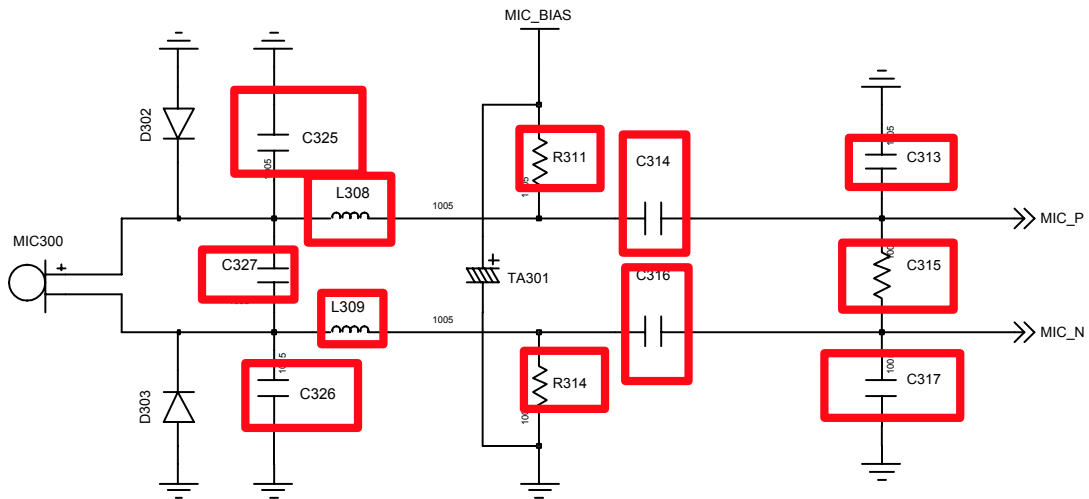
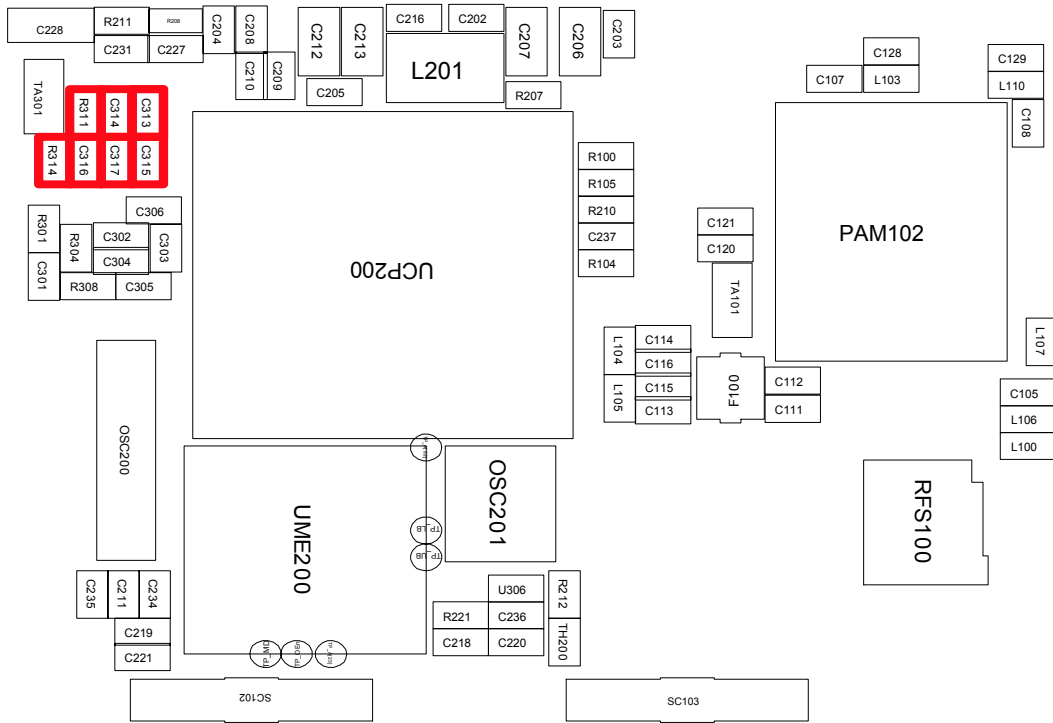


9-4. Sim Part



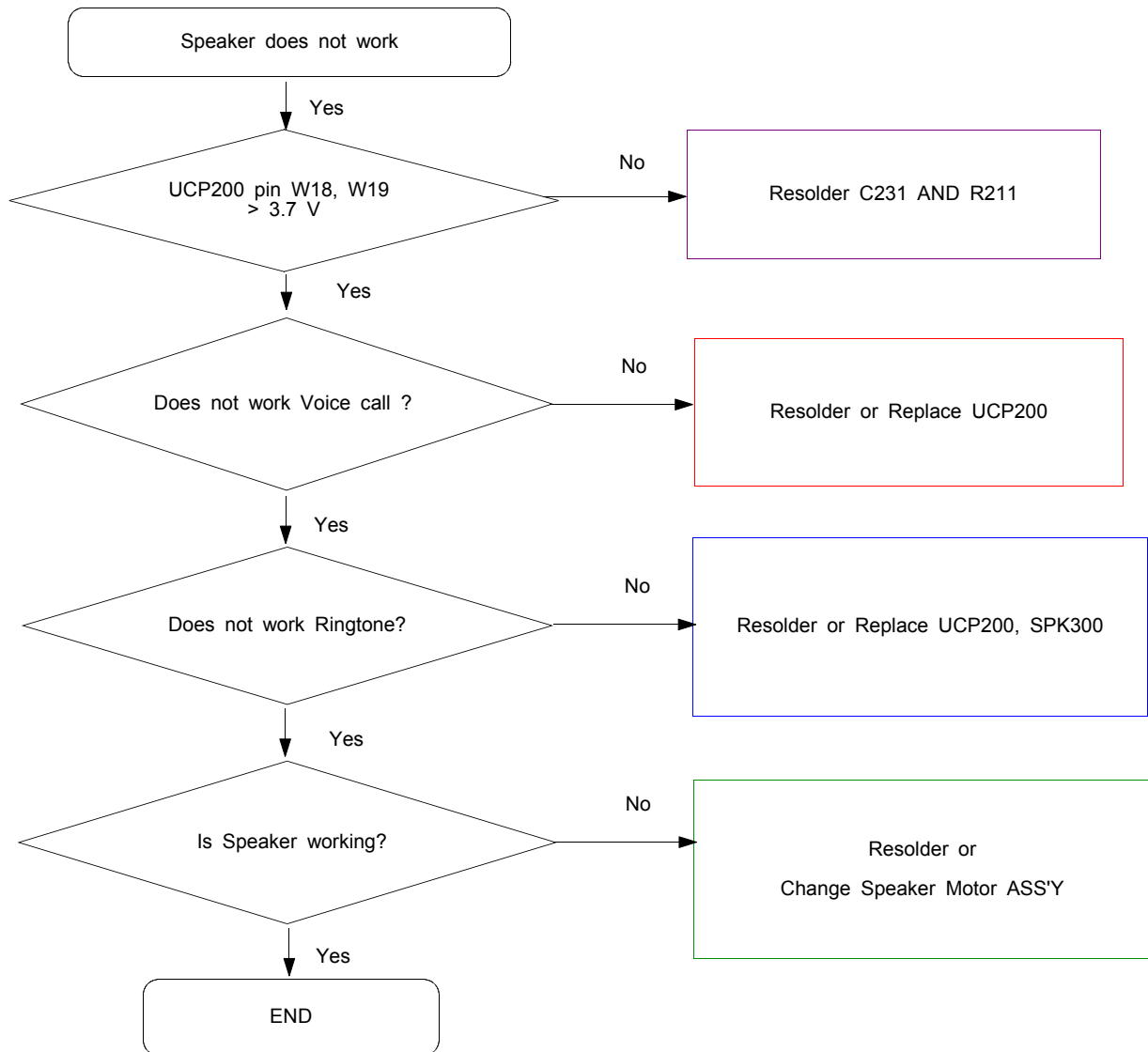
9-5. Microphone Part

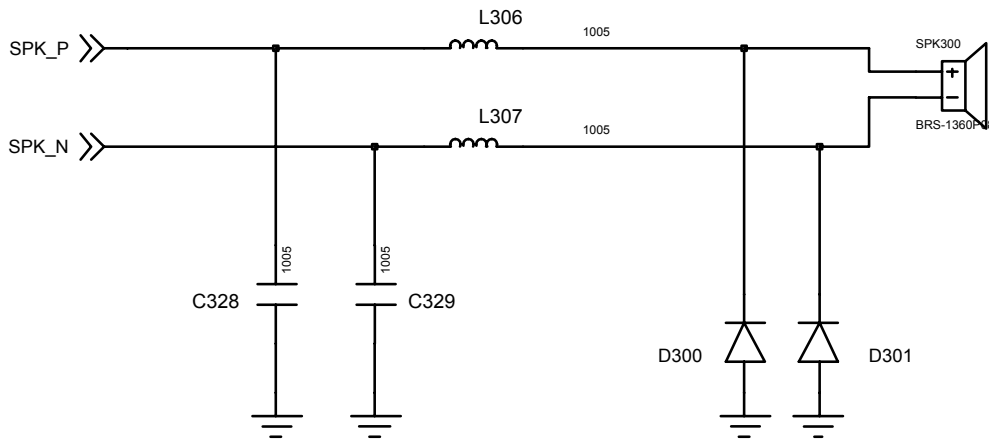
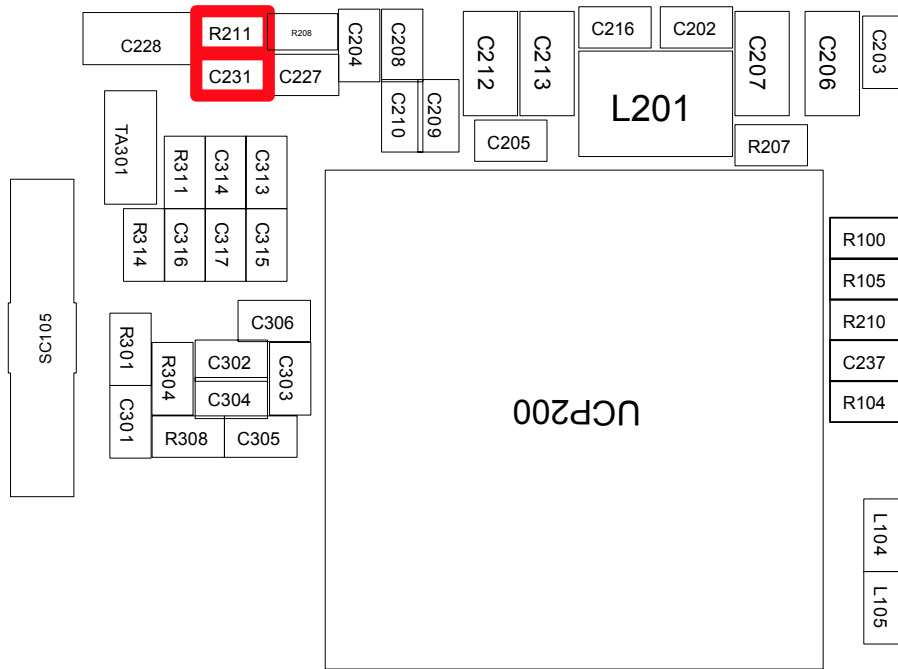




MAIN_MIC

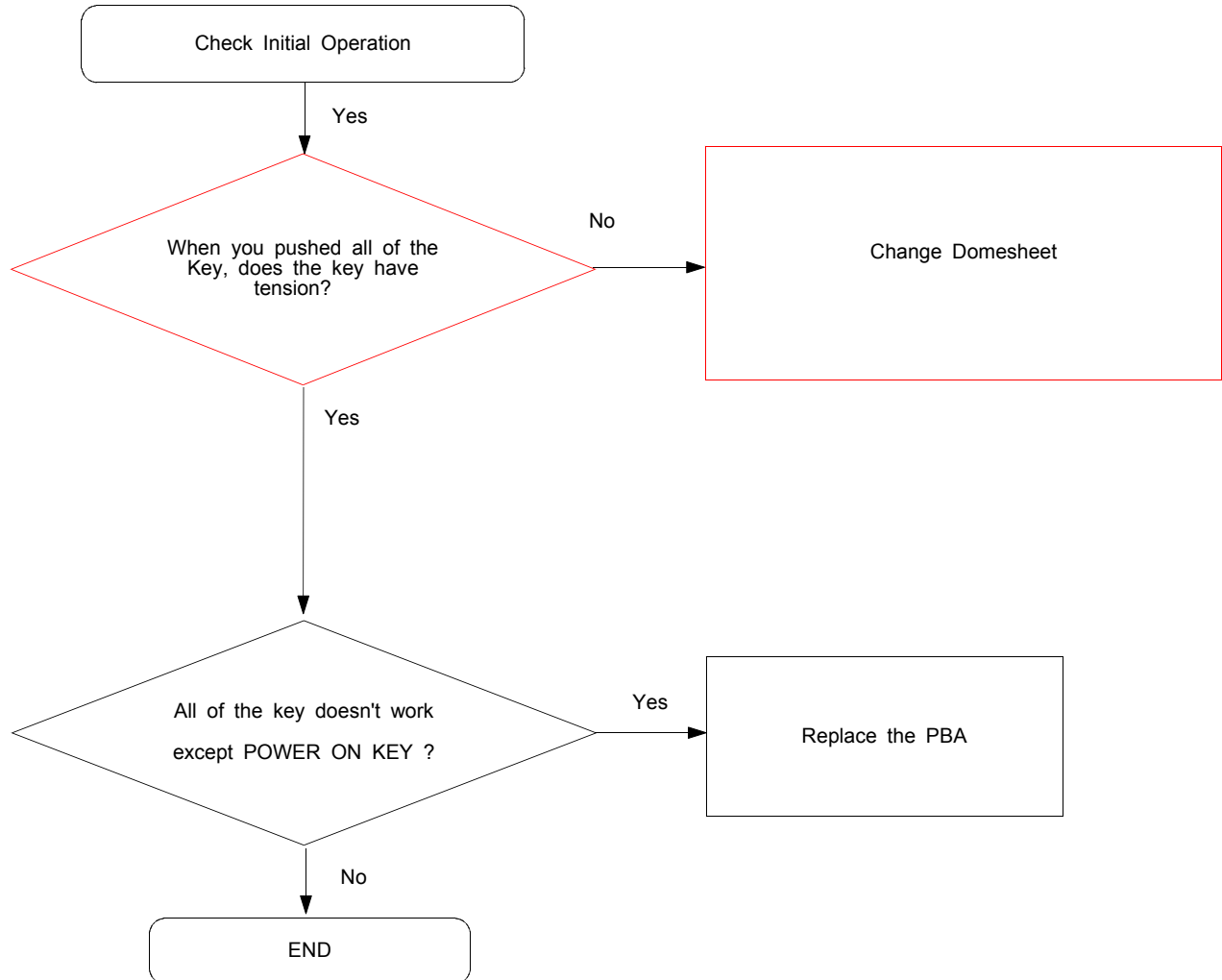
9-6. Speaker Part



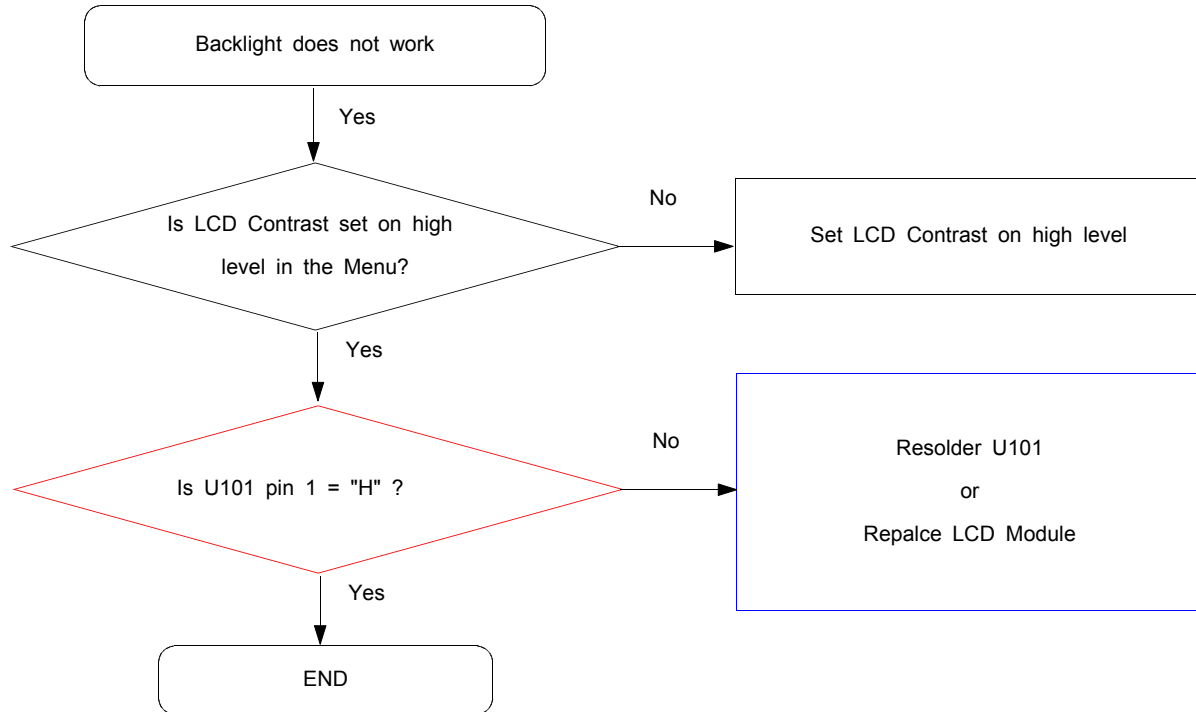


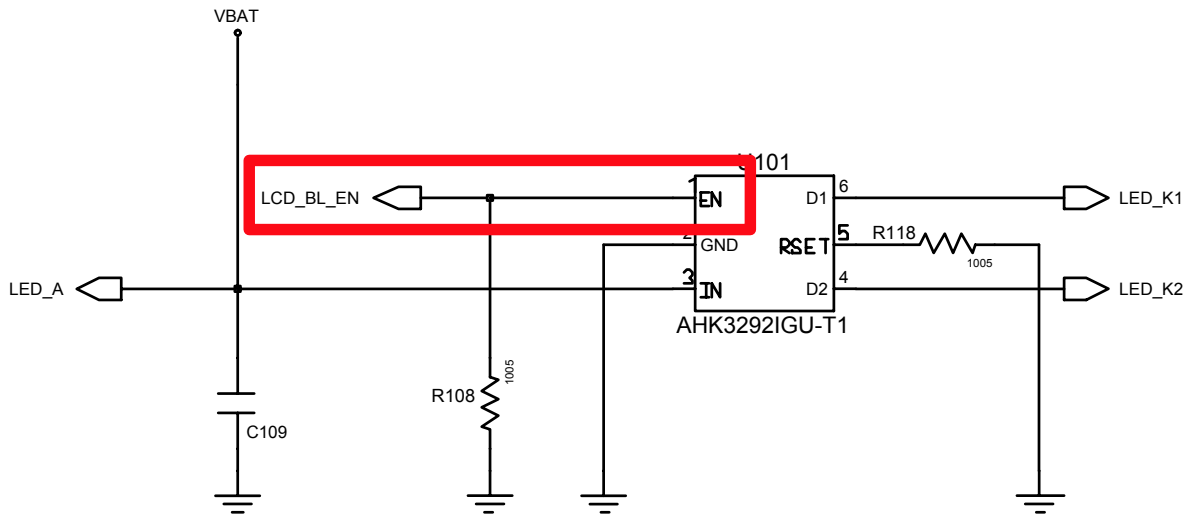
SPEAKER

9-7. Key Data Input



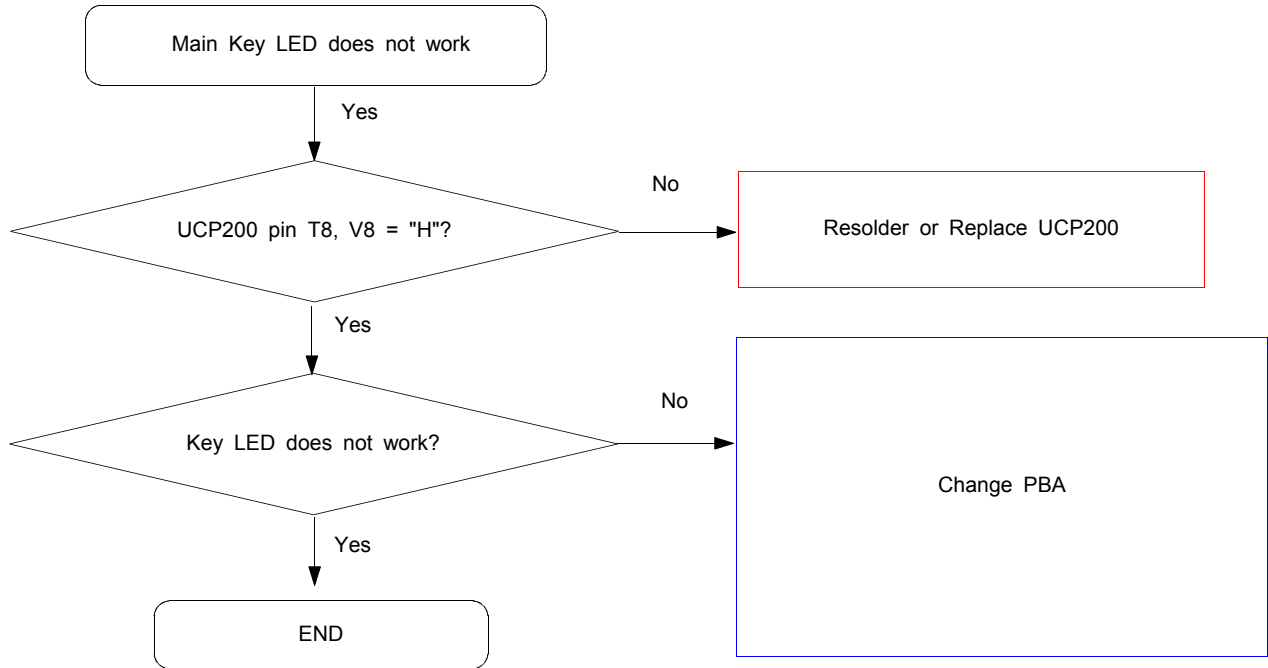
9-8. Back Light (for Color Main LCD)



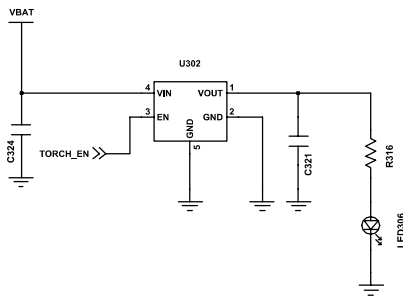
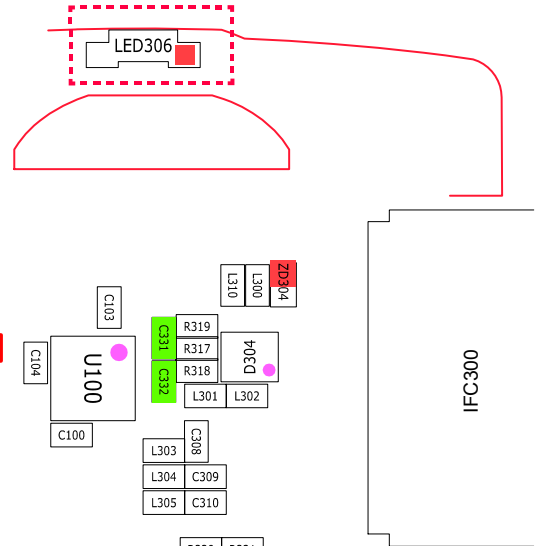
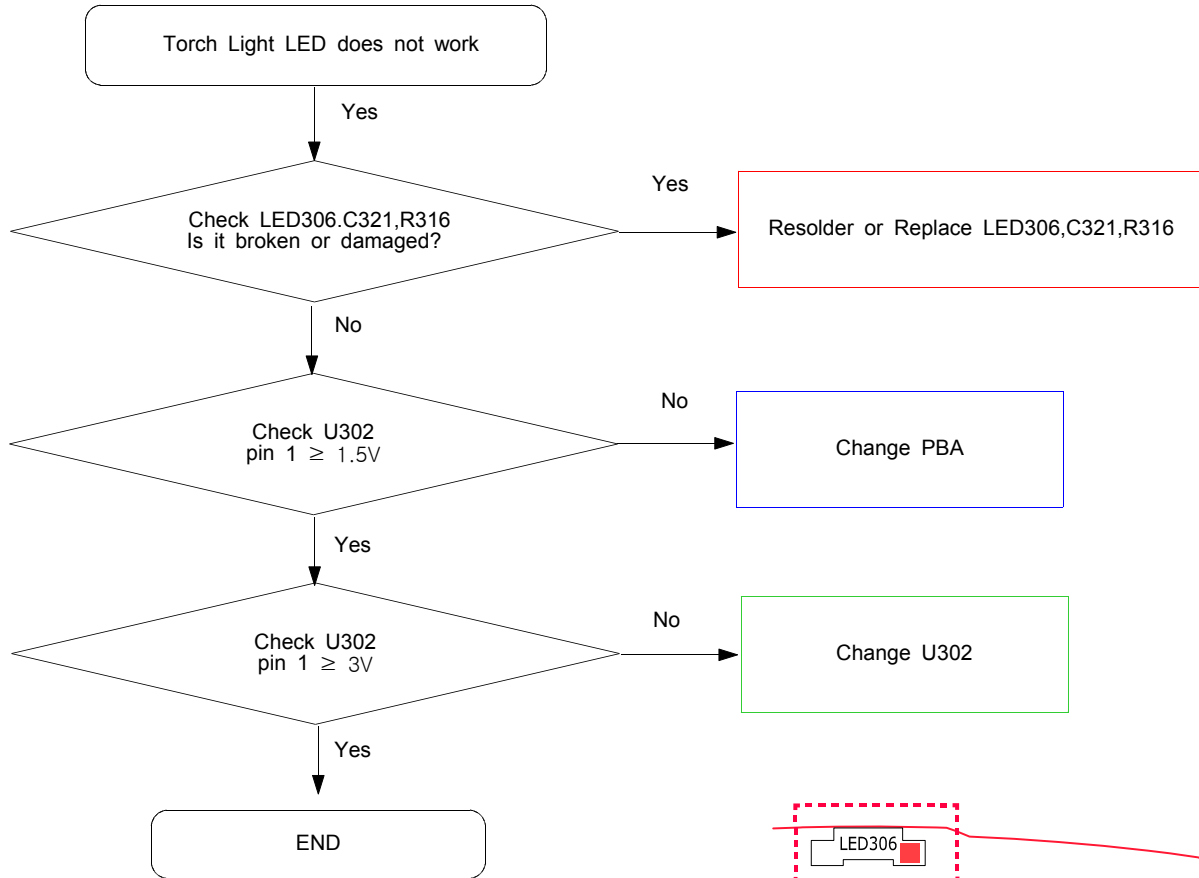


LCD BACKLIGHT

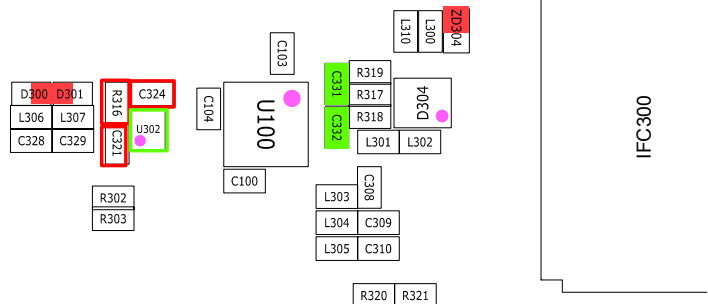
9-9. Key Back Light



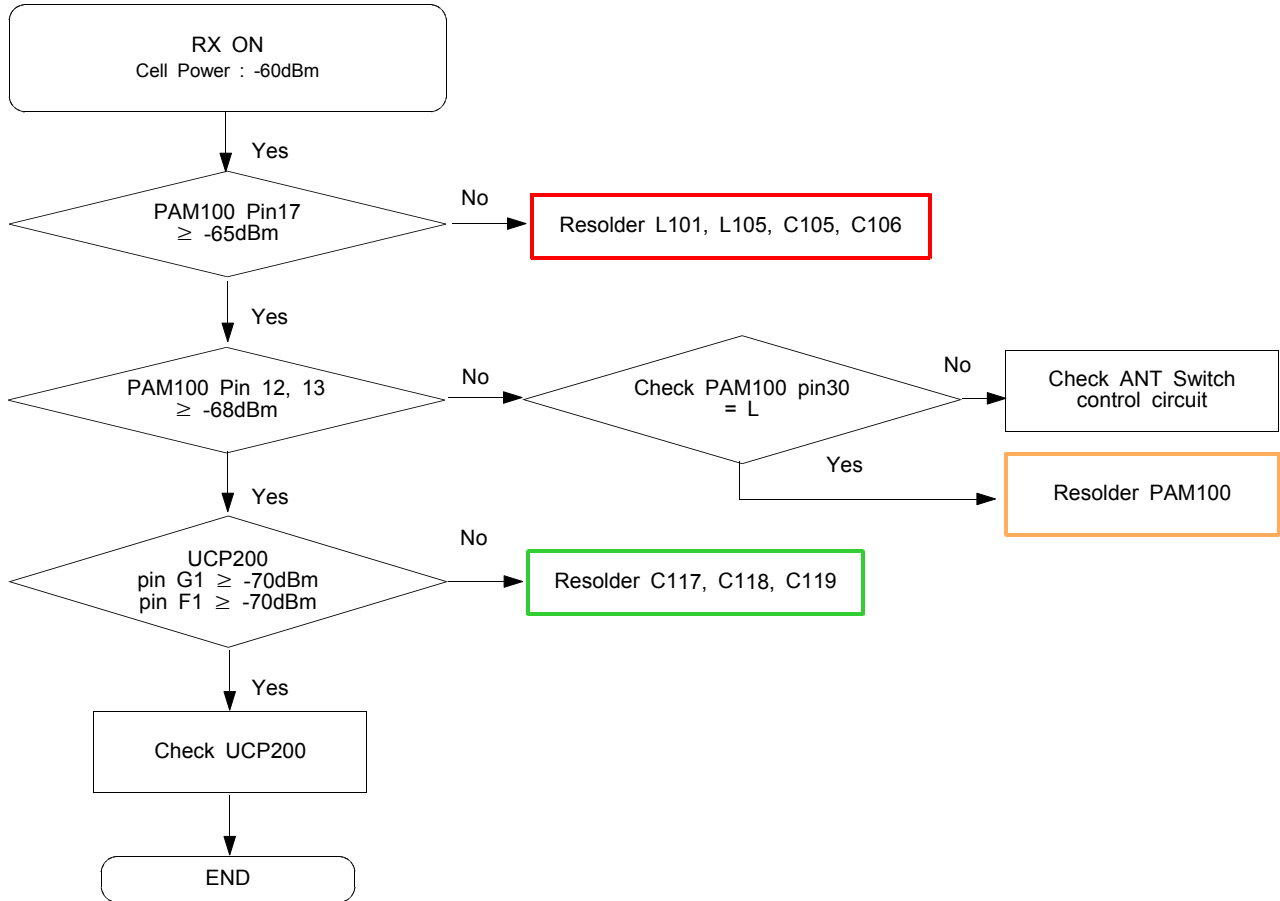
9-10. Torch Light



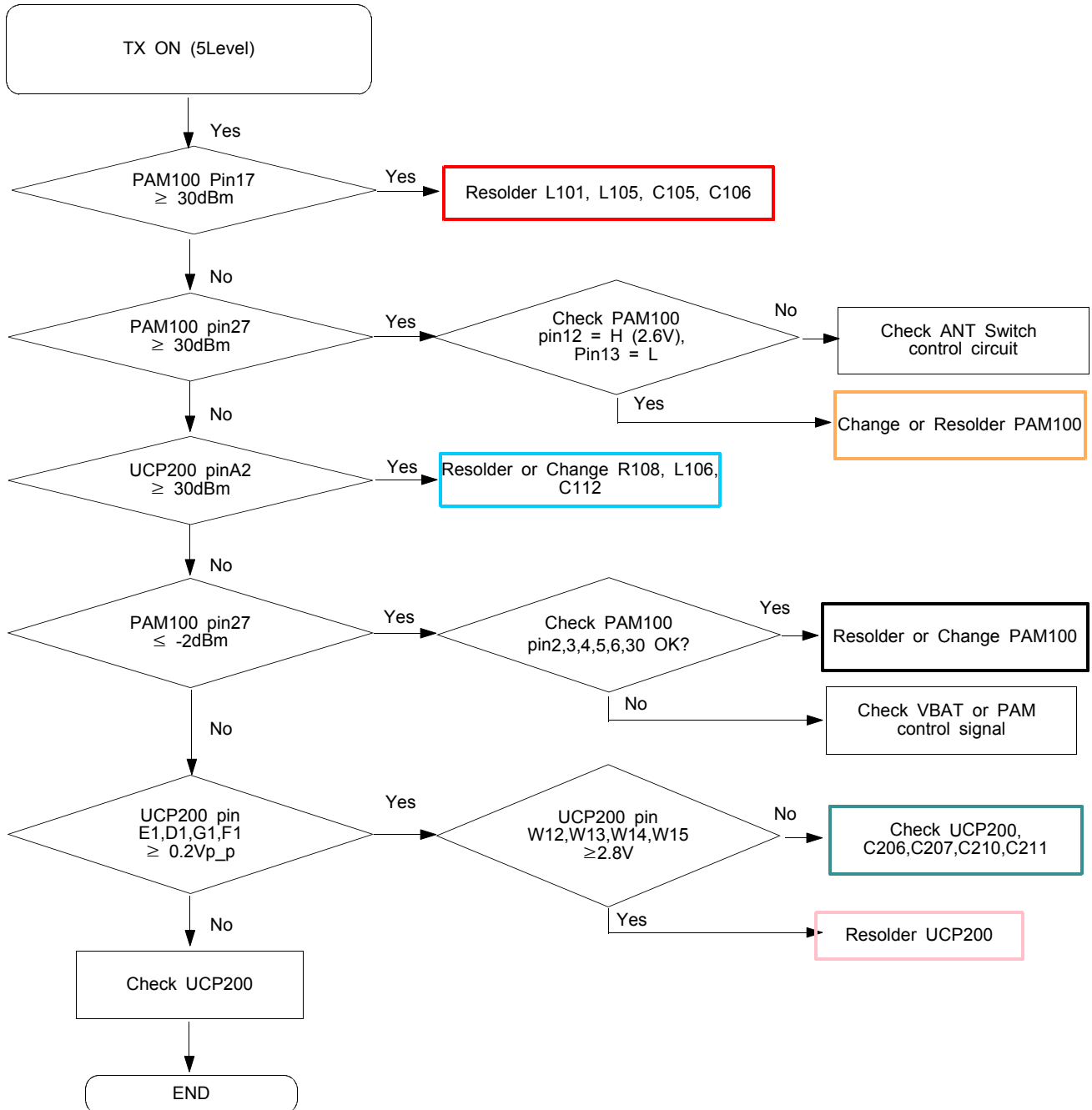
TORCH DRIVER



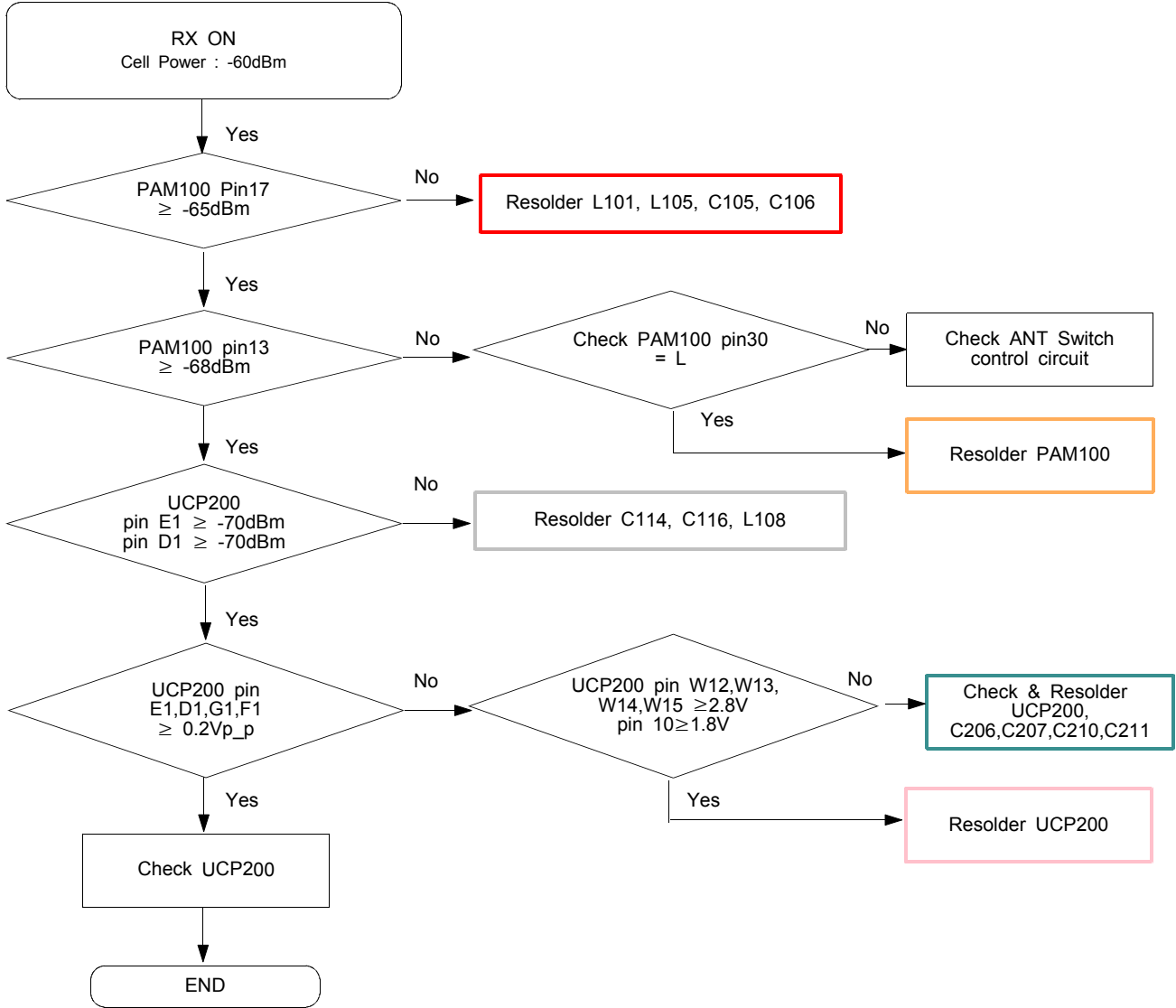
9-12. GSM Receiver



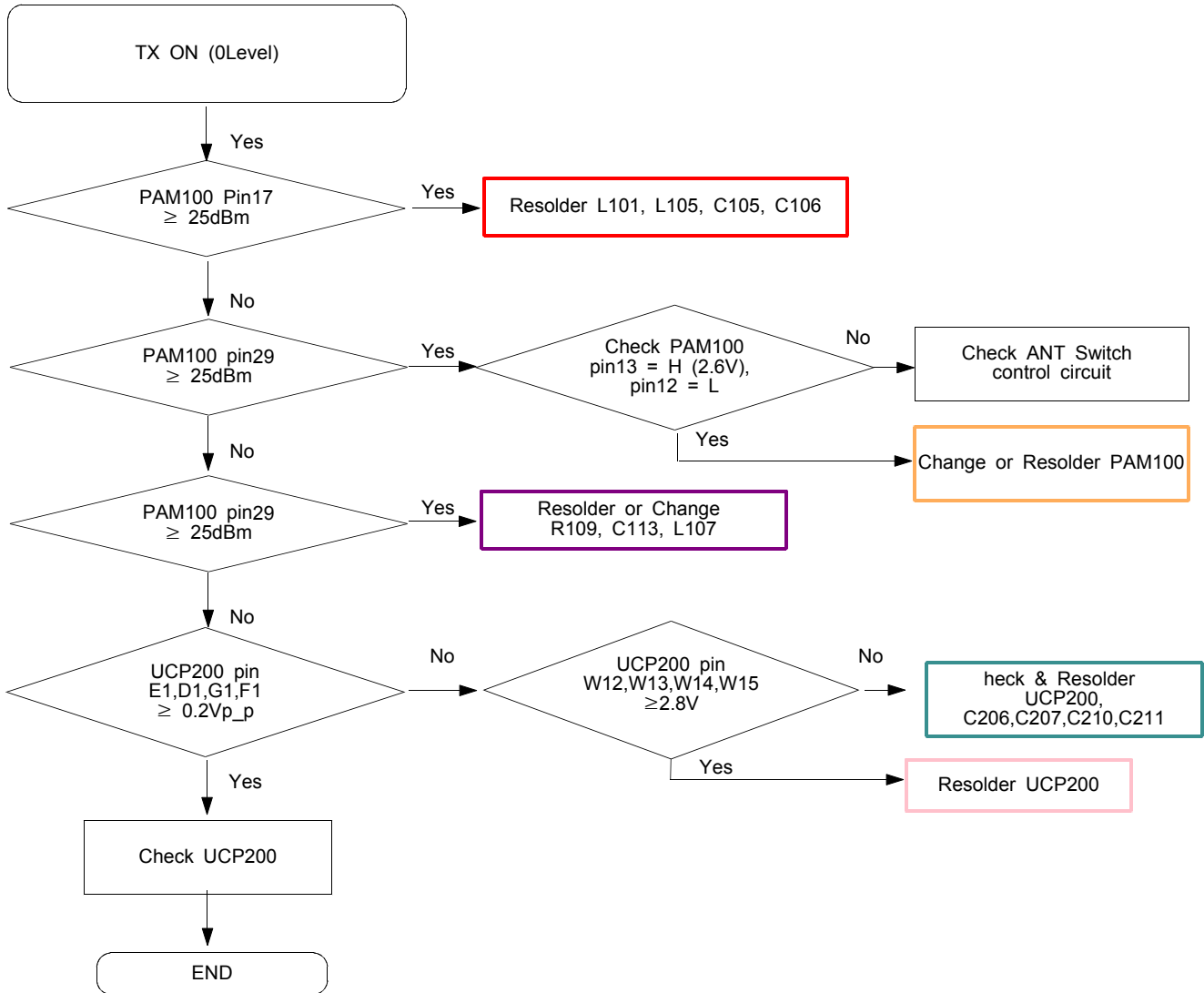
9-13. GSM Transmitter

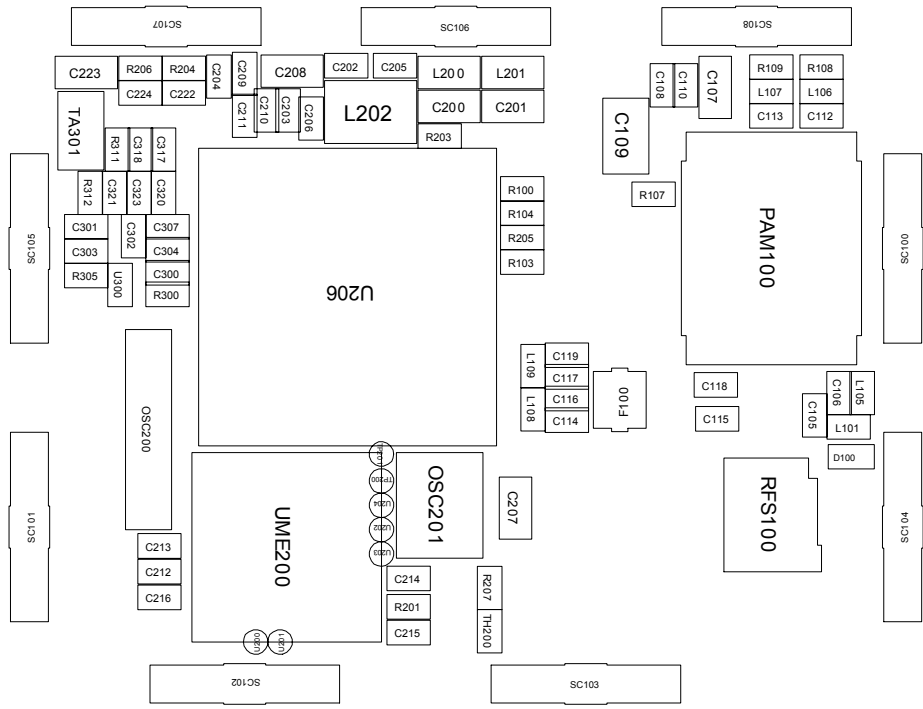


9-14. DCS Receiver



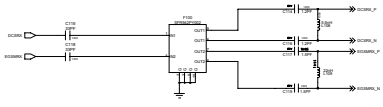
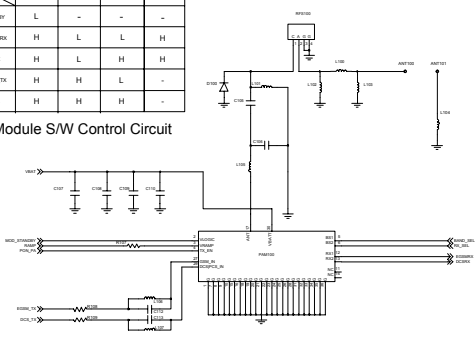
9-15. DCS Transmitter



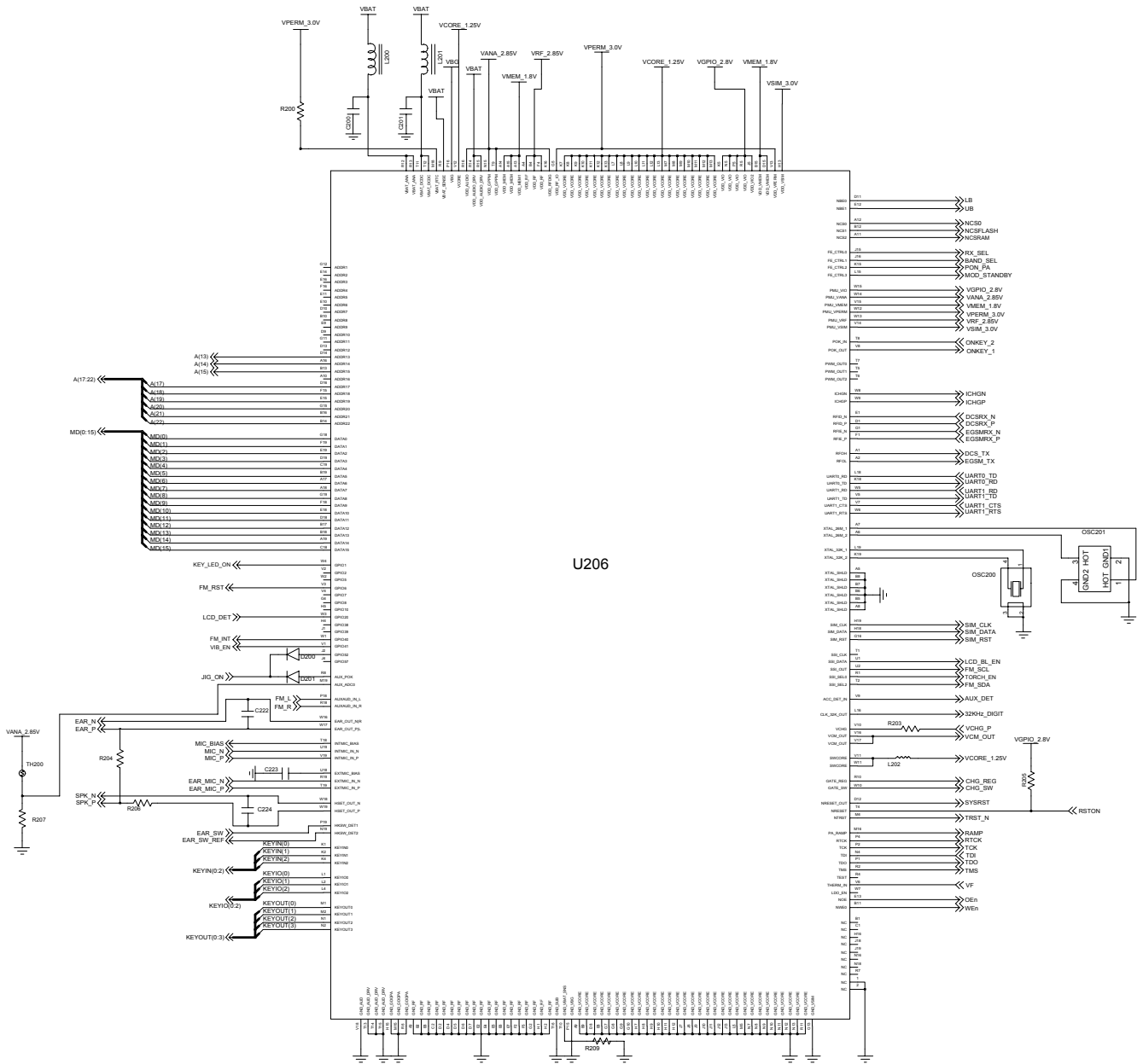


	MOD_STANBY	FOR_PA	SWD_SEL	RX_SEL
STANDBY	L	-	-	-
ESDM_RX	H	L	L	H
DCL_RX	H	L	H	H
ESDM_TX	H	H	L	-
DCL_TX	H	H	H	-

TX Module S/W Control Circuit

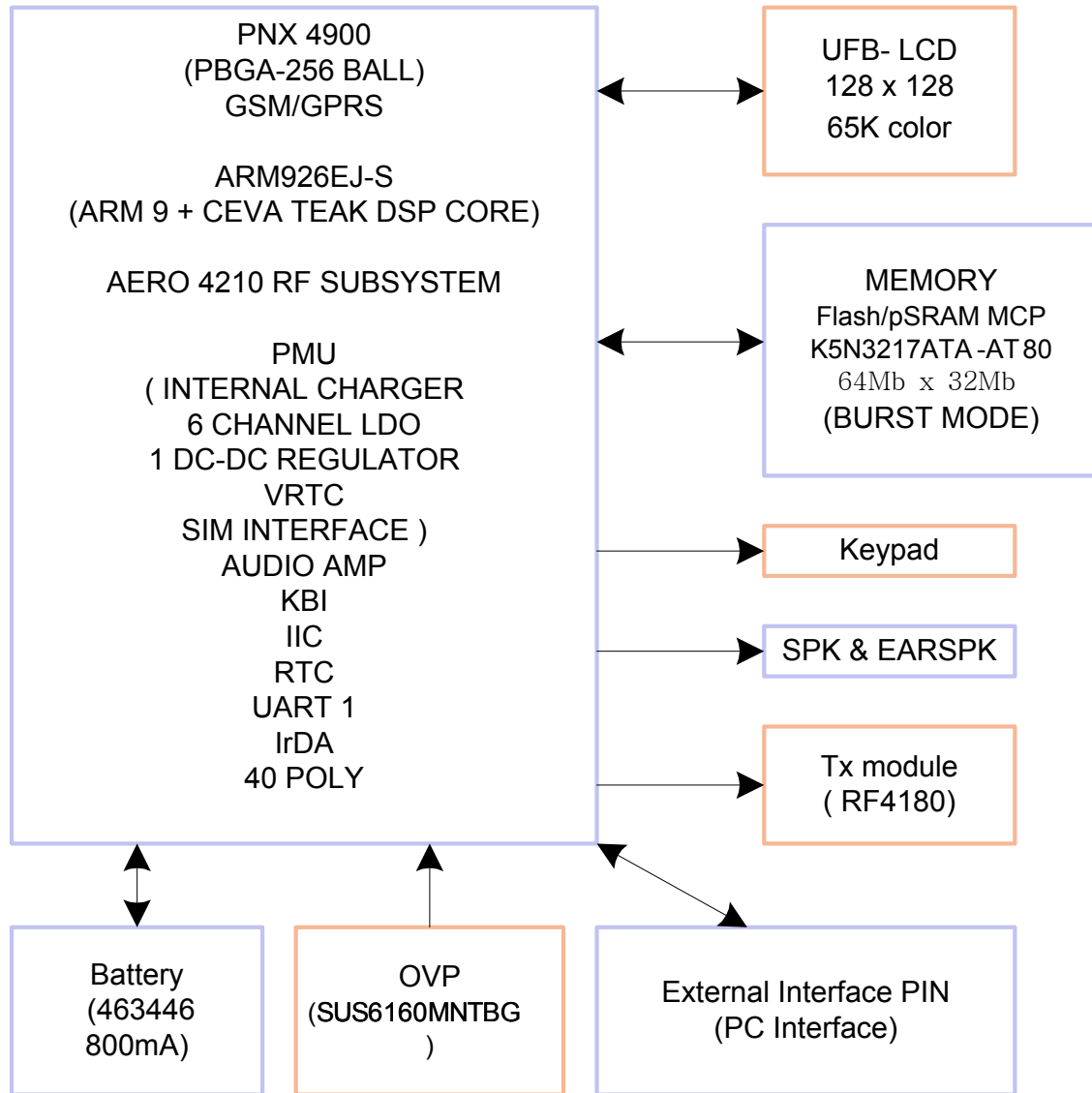


RF Part



7. Block Diagrams

7-1. RF Block Diagram



8. PCB Diagrams

Top

