

2. Specification

2-1. GSM General Specification

	GSM850 Phase 1	PCS1900
Freq. Band[MHz] Uplink/Downlink	824~849 869~894	1850~1910 1930~1990
ARFCN range	128~251	512~810
Tx/Rx spacing	45MHz	80MHz
Cell Broadcast/ Bit Period	270.3Kbps 3.692us	270.3Kbps 3.692us
Time Slot Period/Frame Period	576.9us 4.615ms	576.9us 4.615ms
Modulation	0.3GMSK	0.3GMSK
MS Power	33dBm~5dBm	30dBm~0dBm
Power Class	4 (max + 33dBm)	1 (max + 30dBm)
Sensitivity	-102dBm	-100dBm
TDMA Mux	8	8

2-2. GSM Tx Power Class

TX Power control level	GSM850
5	33±2 dBm
6	31±2 dBm
7	29±2 dBm
8	27±2 dBm
9	25±2 dBm
10	23±2 dBm
11	21±2 dBm
12	19±2 dBm
13	17±2 dBm
14	15±2 dBm
15	13±2 dBm
16	11±3 dBm
17	9±3dBm
18	7±3 dBm
19	5±3 dBm

TX Power control level	PCS1900
0	30±3 dBm
1	28±3 dBm
2	26±3 dBm
3	24±3 dBm
4	22±3 dBm
5	20±3 dBm
6	18±3 dBm
7	16±3 dBm
8	14±3 dBm
9	12±4 dBm
10	10±4 dBm
11	8±4dBm
12	6±4 dBm
13	4±4 dBm
14	2±5 dBm
15	0±5 dBm

3. Product Function

Main Function

- GSM 850/1900
- 1.43" CSTN
- FM RADIO
- SMS, MMS
- 64 Poly Melody
- Noise Cancellation
- JAVA

10. Reference data

Reference Abbreviate

- **ADC** : Analog to Digital Converter
- **AMPS** : Advanced Mobile Phone System(analog IS-95)
- **BGA** : Ball Grid Array
- **BPF** : Band Pass Filter
- **CDMA** : Code Division Multiple Access
- **DL** : Downlink
- **FTP** : File Transfer Protocol
- **GPS** : Global Positioning System
- **MMS** : Multimedia Messaging Service
- **PBA** : Panel Board Assembly
- **PCS** : Personal Communication System
- **PIM(S)** : Personal Information Management (System)
- **QPSK** : Quadrature Phase Shift Keying
- **RF** : Radio Frequency
- **RSS** : Received Signal Strength
- **SAW** : Surface Acoustic Wave
- **SMS** : Short Message Service
- **TCXO** : Temperature Compensated Crystal Oscillator
- **TSP** : Touch Screen Panel
- **UL** : Uplink
- **USB** : Universal Serial Bus

1. Safety Precautions

1-1. Repair Precaution

- Repair in Shield Box, during detailed tuning.
Take specially care of tuning or test, because the specification of cellular phone is sensitive for surrounding interference(RF noise).
- Be careful to use a kind of magnetic object or tool, because performance of parts is damaged by the influence of magnetic force.
- Surely use a standard screwdriver when you disassemble this product, otherwise screw will be worn away.
- Use a thicken twisted wire when you measure level.
A thicken twisted wire has low resistance, therefore error of measurement is few.
- Repair after separate Test Pack and Set because for short danger (for example an overcurrent and furious flames of parts etc) when you repair board in condition of connecting Test Pack and tuning on.
- Take specially care of soldering, because Land of PCB is small and weak in heat.
- Surely tune on/off while using AC power plug, because a repair of battery charger is dangerous when tuning ON/OFF PBA and Connector after disassembling charger.
- Don't use as you pleases after change other material than replacement registered on SEC System. Otherwise engineer in charge isn't charged with problem that you don't keep this rules.

1-2. ESD(Electrostatically Sensitive Devices) Precaution

Several semiconductor may be damaged easily by static electricity. Such parts are called by ESD (Electrostatically Sensitive Devices), for example IC,BGA chip etc. Read Precaution below.

You can prevent from ESD damage by static electricity.

- Remove static electricity remained your body before you touch semiconductor or parts with semiconductor. There are ways that you touch an earthed place or wear static electricity prevention string on wrist.
- Use earthed soldering steel when you connect or disconnect ESD.
- Use soldering removing tool to break static electricity. Otherwise ESD will be damaged by static electricity.
- Don't unpack until you set up ESD on product. Because most of ESD are packed by box and aluminum plate to have conductive power,they are prevented from static electricity.
- You must maintain electric contact between ESD and place due to be set up until ESD is connected completely to the proper place or a circuit board.

4. Array course control

4-1. Software Adjustments



Test Jig (GH99-36900A)



Test Cable (GH39-01160A)



RF Test Cable (GH39-00985A)



Adapter (GH99-38251A)

4-2. Software Downloading

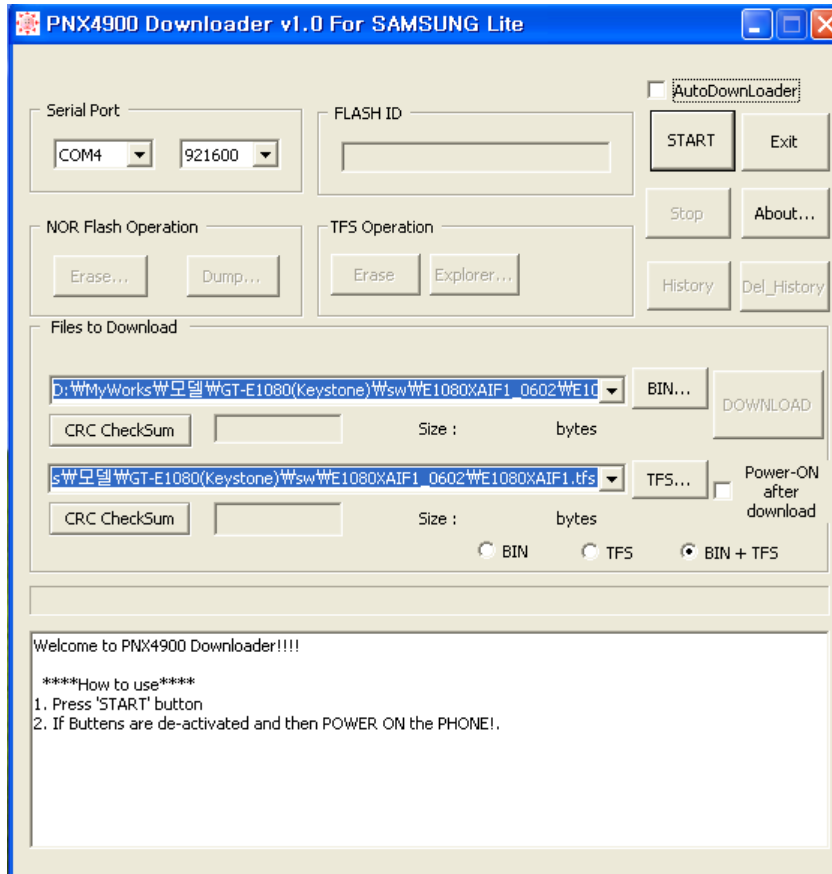
4-2-1. Pre-requisite for Downloading

- Downloader Program([PNX4900 Downloader v1.0 For Lite](#))
- GT-E1085L Mobile Phone
- Data Cable
- JIG BOX
- Test Cable
- Serial Cable
- Binary files

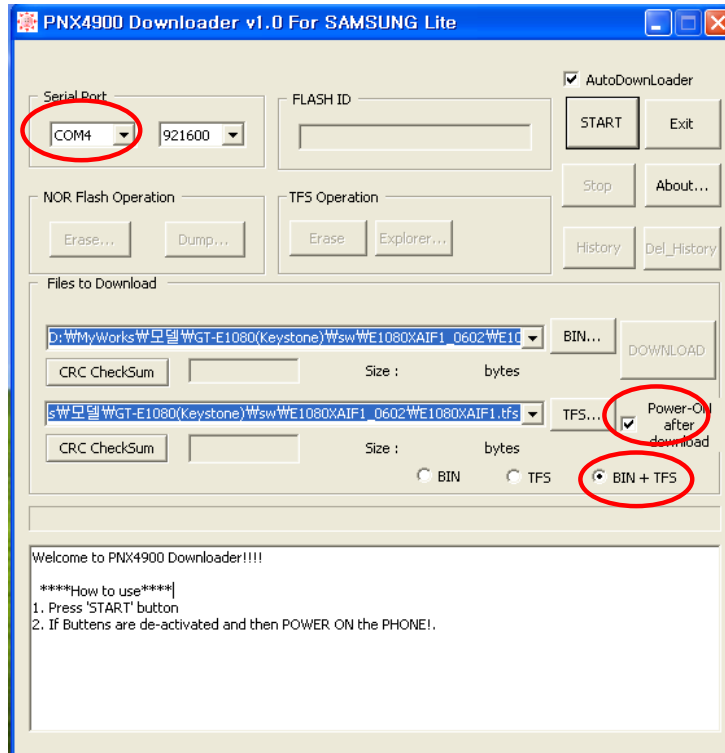
4-2-2. S/W Downloader Program

- Load the binary download program by executing the "[PNX4900 Downloader v1.0 Lite](#)"

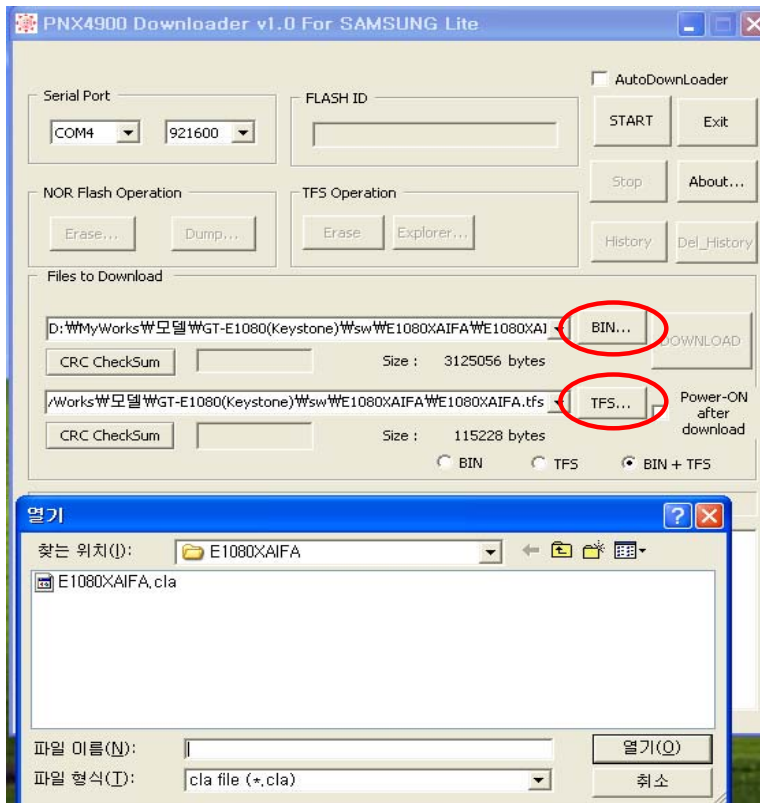
1. Select the connected serial port and the rate of speed.



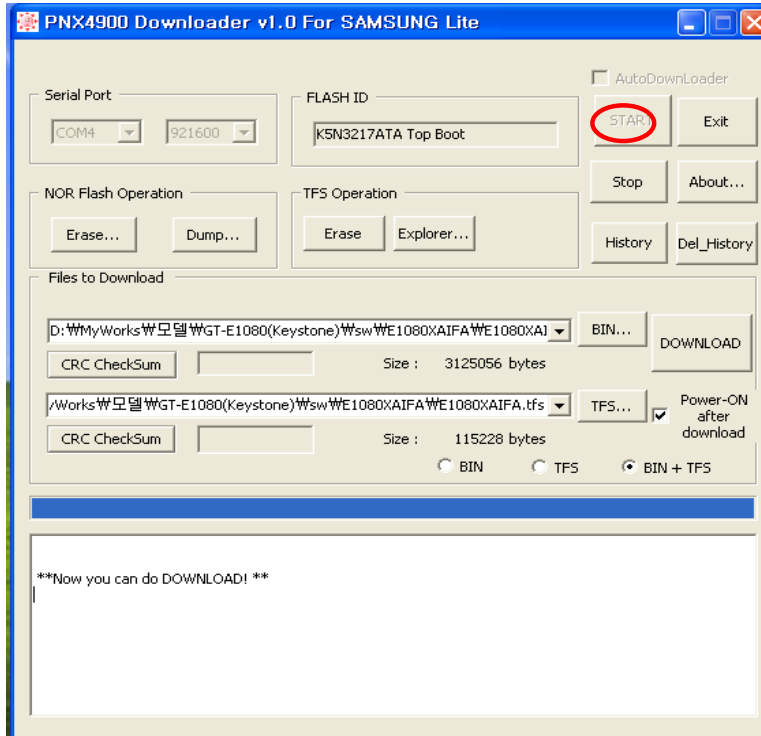
2. Select the Port, Baud Rate and Mode.



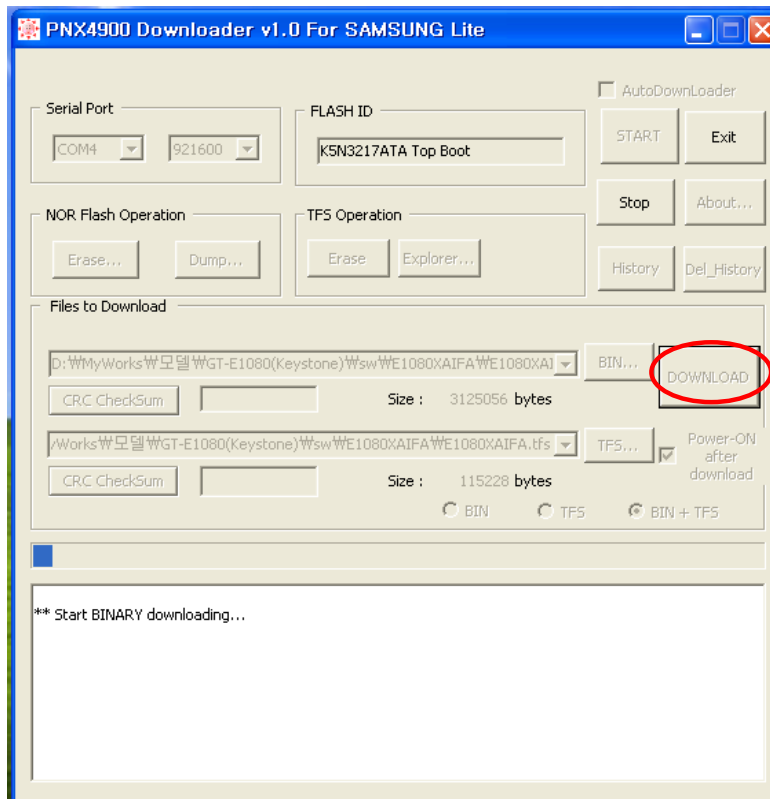
3. Select the START Button, When Complete DL.Bootloader.



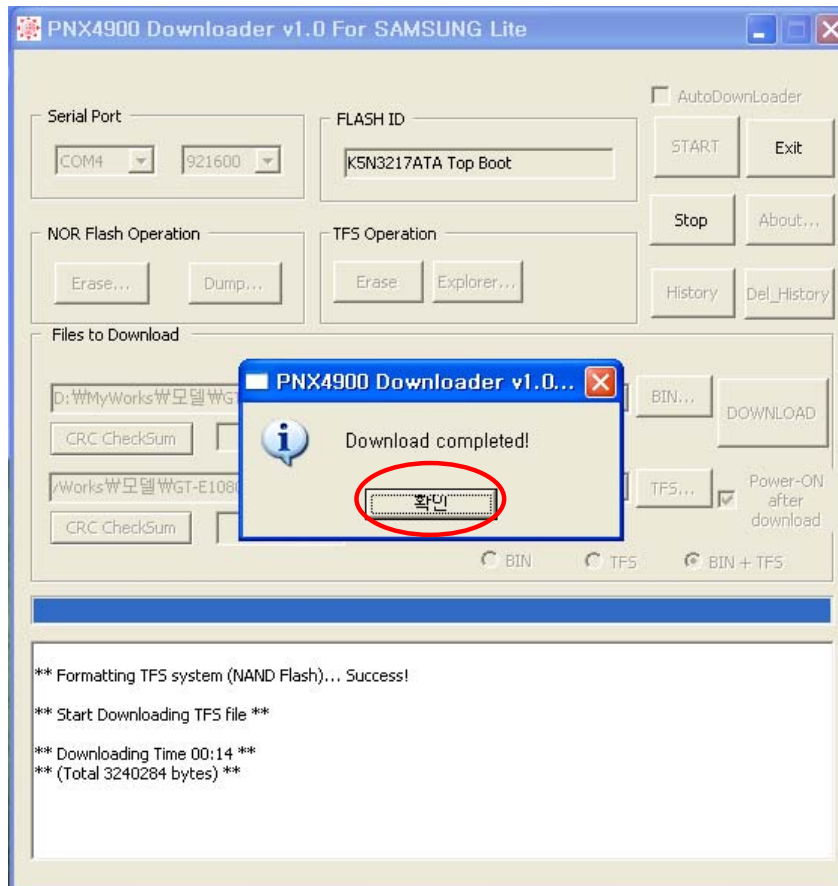
4. 4. Press the "Start" button and connect the Handset, then press "확인".



5. Check the All Download & Calset , Click the Download Button,



6. When downloading is complete, automatically the small window was showed up.



7. Confirm the downloaded version name and etc. :

***#1234#**

Full Reset :

***0206*3855#**