

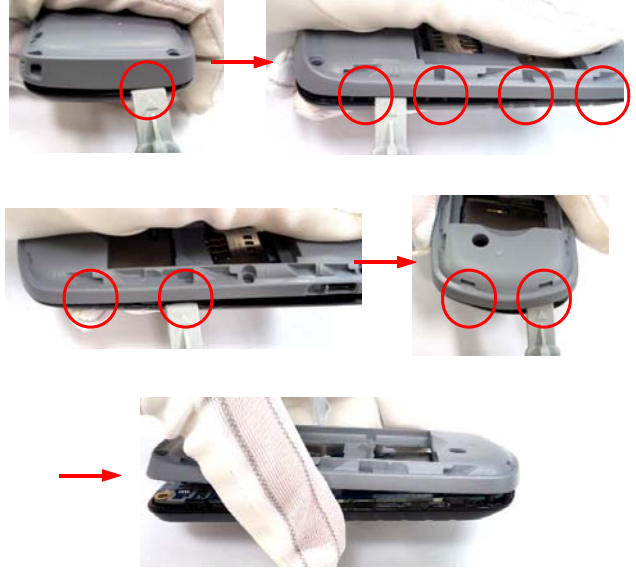
11. Disassembly and Assembly Instructions

11-1. Disassembly

1 Unscrew 3 points at the REAR case



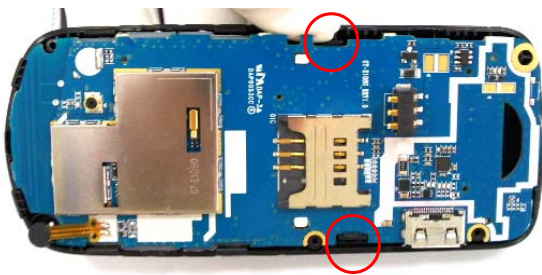
2 Disassemble the REAR as below sequence



1) Be careful not to make scratch and molding damage!

1) Be careful not to make scratch and molding damage!
2) Be careful not to damage IF COVER

3 Disassemble the PBA. Be careful with hooks.

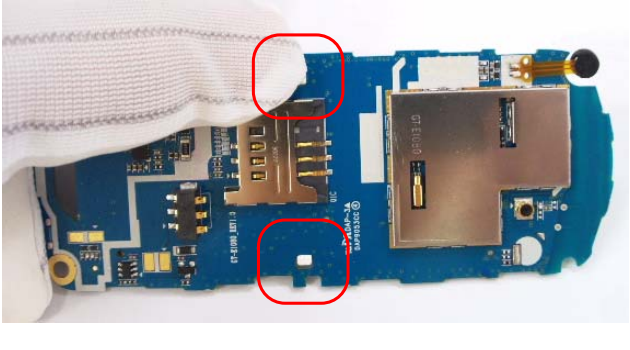
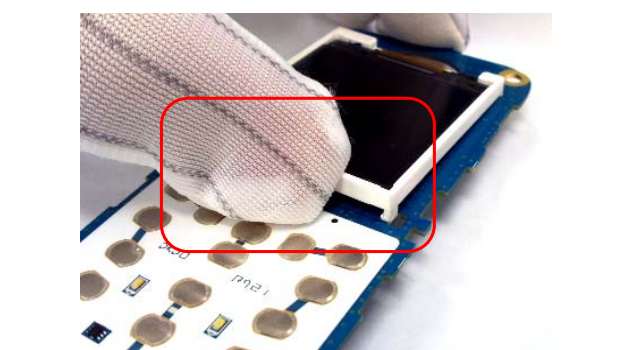

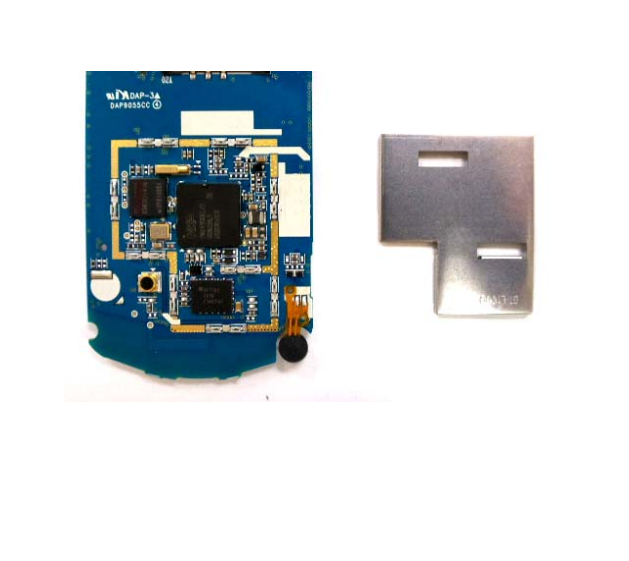


1) Be careful not to make scratch and molding damage!

4 Separate the PBA from the FRONT

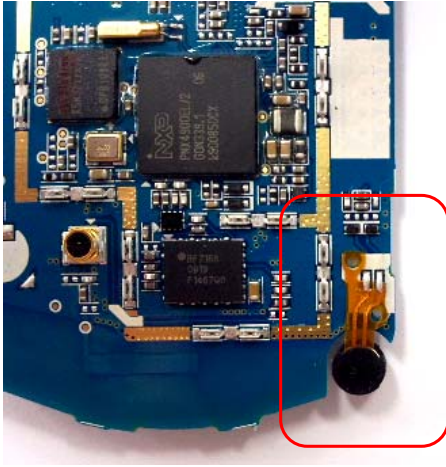


1) Be careful not to make scratch and molding damage!

<p>5 Push the hooks of both side of LCD</p>	<p>6 Lift up bottom side of the LCD carefully.</p>
	
<p>1) Be careful not to make scratch and molding damage! 2) Be careful not to damage LCD</p>	<p>1) Be careful not to make scratch and molding damage! 2) Be careful not to damage LCD FPCB and LCD</p>
<p>7 Disassemble the LCD.</p>	<p>8 Disassemble the SHIELD CAN</p>
	
<p>1) Be careful not to make scratch and molding damage! 2) Be careful not to damage LCD FPCB and LCD</p>	<p>1) Be careful not to make scratch and molding damage!</p>

9

Disassemble the MIC



- 1) Be careful not to make scratch and molding damage!
- 2) Be careful not to damage MIC FPCB

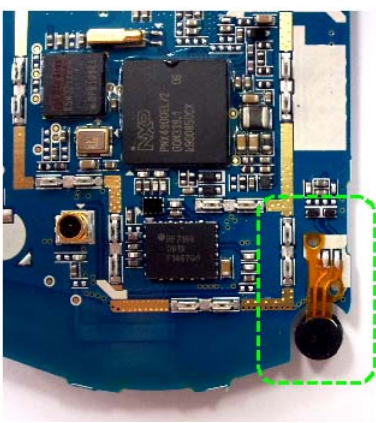

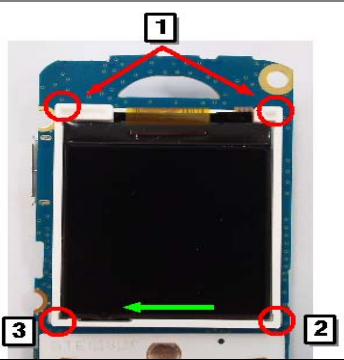

10

Separate the KEYPAD from the FRONT



- 1) Be careful not to make scratch and molding damage!

11-2. Assembly

<div data-bbox="170 304 235 346" style="border: 1px solid black; padding: 2px; width: 30px; text-align: center;">1</div> <div data-bbox="251 304 803 399" style="border: 1px solid black; padding: 5px;"> <p>Soldering 2 points of MIC FPCB pad with PBA</p> </div> <div data-bbox="300 451 673 871" style="text-align: center;">  </div>	<div data-bbox="836 304 901 346" style="border: 1px solid black; padding: 2px; width: 30px; text-align: center;">2</div> <div data-bbox="917 304 1461 367" style="border: 1px solid black; padding: 5px;"> <p>Soldering FPCB of the LCD MODULE</p> </div> <div data-bbox="820 388 1461 556" style="background-color: yellow; padding: 5px;"> <p style="text-align: center;">CAUTION</p> <p style="text-align: center;">Check F-PCB to MAIN PCB soldering tightly. (If there is a gap between F-PCB and Main board will makes faulty)</p> </div> <div data-bbox="950 556 1339 840" style="text-align: center;">  </div> <div data-bbox="836 840 1445 934" style="border: 1px solid black; padding: 5px;"> <p style="text-align: center;">Be careful not to make Flux on the Main Board (Use the cover of Soldering Jig)</p> </div>
<p>1) Be careful not to make scratch and molding damage!</p> <p>2) Be careful not to make a gap between LCD FPCB and Main Board.</p> <p>3) Height of solder should not over 0.2mm.</p>	
<div data-bbox="170 1123 235 1165" style="border: 1px solid black; padding: 2px; width: 30px; text-align: center;">3</div> <div data-bbox="251 1123 803 1186" style="border: 1px solid black; padding: 5px;"> <p>Combine LCD to Main Board.</p> </div> <div data-bbox="349 1186 690 1543" style="text-align: center;">  </div> <div data-bbox="170 1543 803 1617" style="border: 1px solid black; padding: 5px;"> <p style="text-align: center;">Push LCD to left and make left hook takes it's position.</p> </div> <div data-bbox="162 1617 812 1795" style="background-color: yellow; padding: 5px;"> <p style="text-align: center;">CHECK POINT</p> <p>1. Order of LCD combining</p> <ol style="list-style-type: none"> ① Set LCD rib to it's hole ② Push and lock the hook which is at right-bottom side of LCD ③ Push and lock the hook which is at left-bottom side of LCD </div>	<div data-bbox="836 1123 901 1165" style="border: 1px solid black; padding: 2px; width: 30px; text-align: center;">4</div> <div data-bbox="917 1123 1461 1186" style="border: 1px solid black; padding: 5px;"> <p>Assemble the SHIELD CAN</p> </div> <div data-bbox="941 1281 1388 1774" style="text-align: center;">  </div>
<p>1) Be careful not to make scratch and molding damage!</p> <p>2) Don't push the panel of LCD while combine the LCD</p>	<p>1) Be careful not to make scratch and molding damage!</p>

5

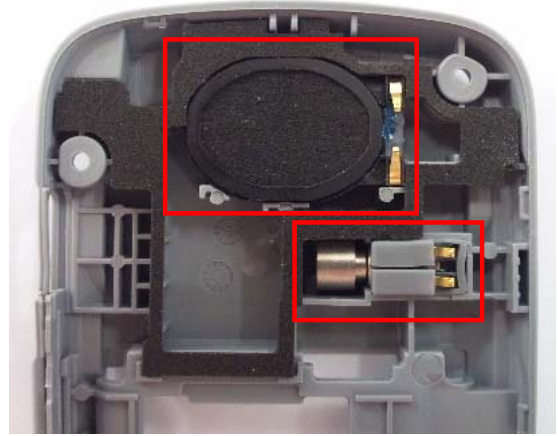
INSERT KEYPAD to FRONT.



1) Be careful not to make scratch and molding damage!

6

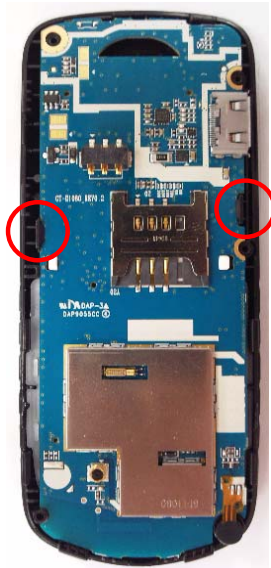
INSERT SPEAKER, MOTOR to REAR.



1) Be careful not to make scratch and molding damage!
 2) When insert MOTOR, use PUSHING JIG.
 3) CHECK SPEAKER, MOTOR insert tightly.

7

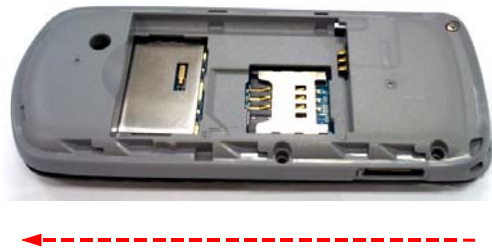
INSERT PBA TO FRONT.



1) Be careful not to make scratch and molding damage!
 2) Be careful nothing goes between LCD and FRONT.

8

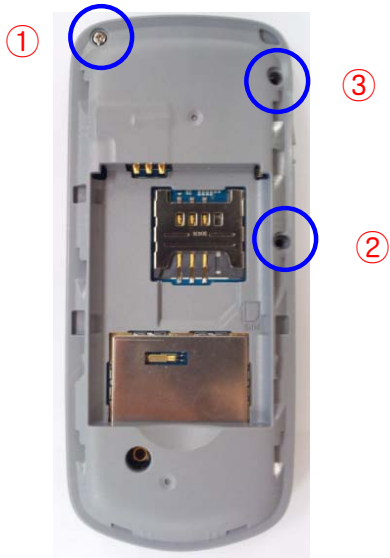
COMBINE REAR FROM TOP TO BOTTOM.



1) Be careful not to make scratch and molding damage!
 2) Be careful not to damage IF COVER.

9

Screw 3 points at the REAR case.



1) Be careful not to make scratch and molding damage!