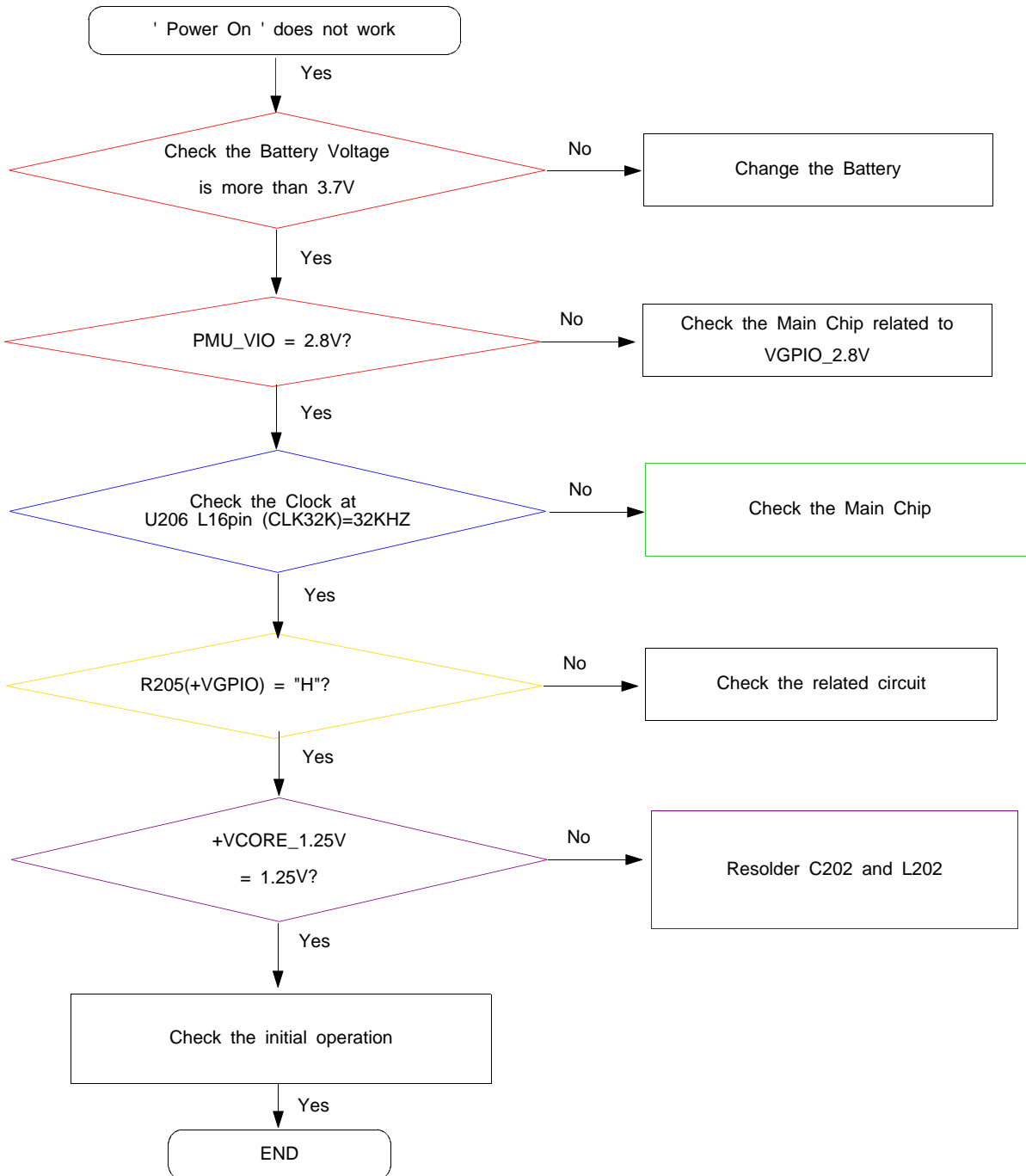
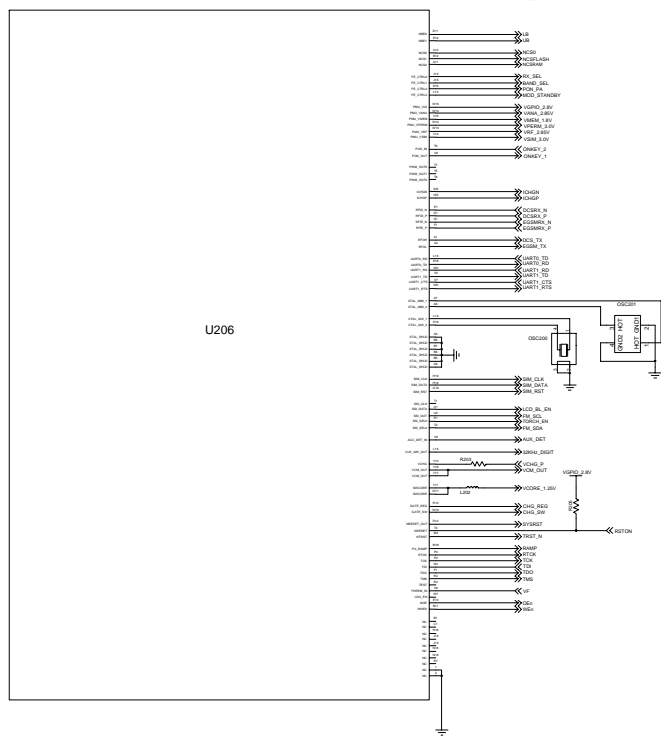
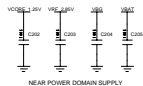
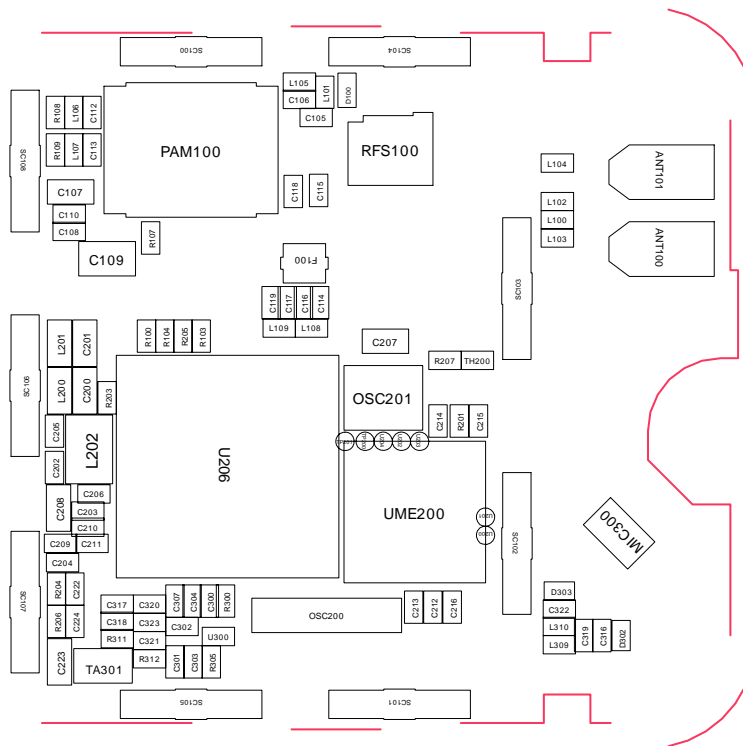


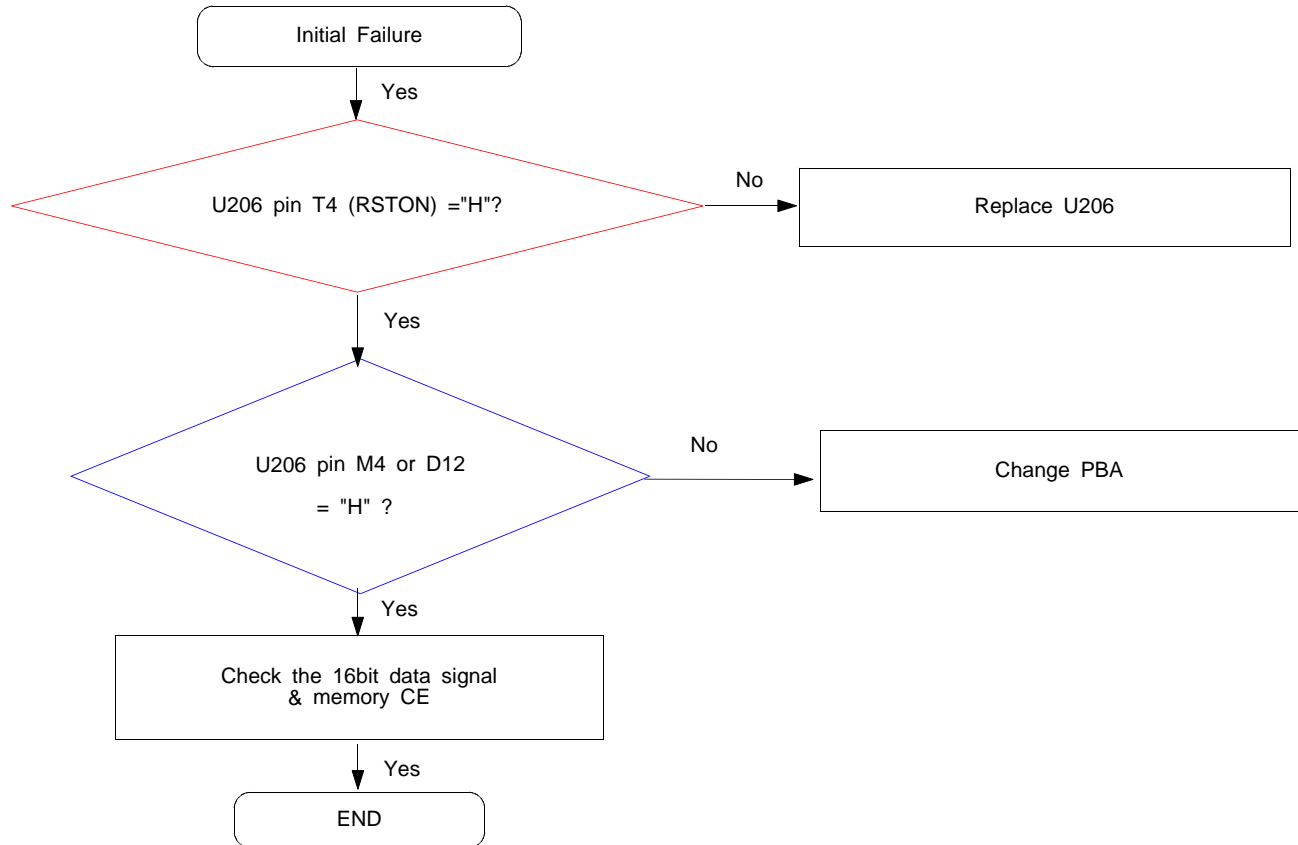
# 9. Flow Chart of Troubleshooting

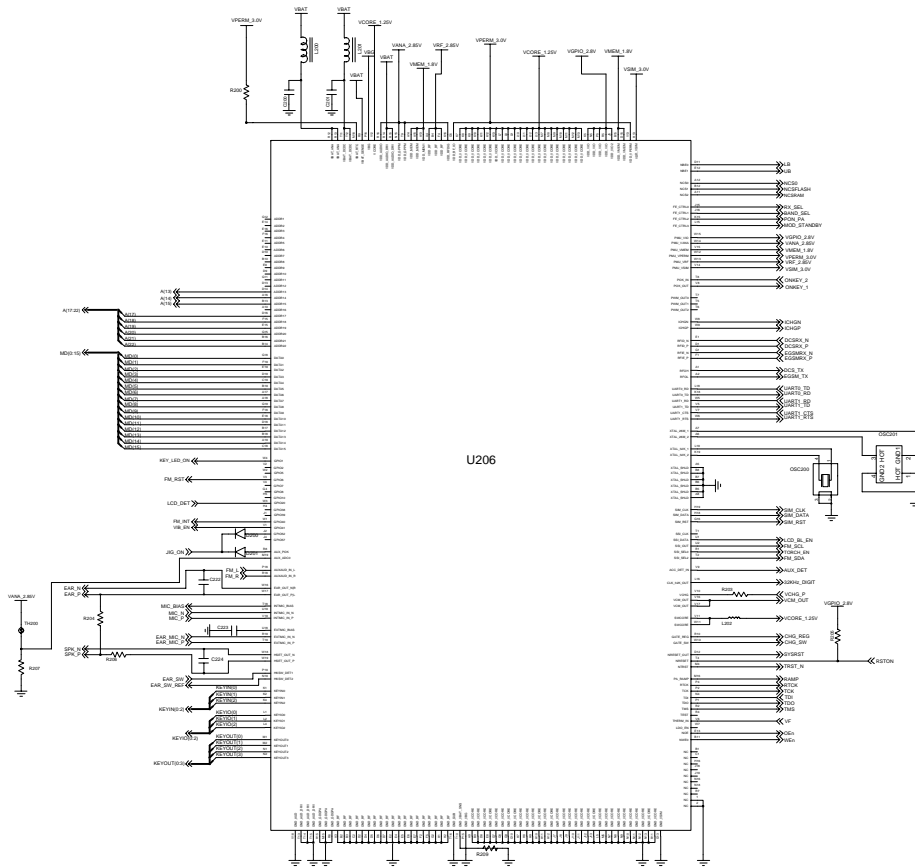
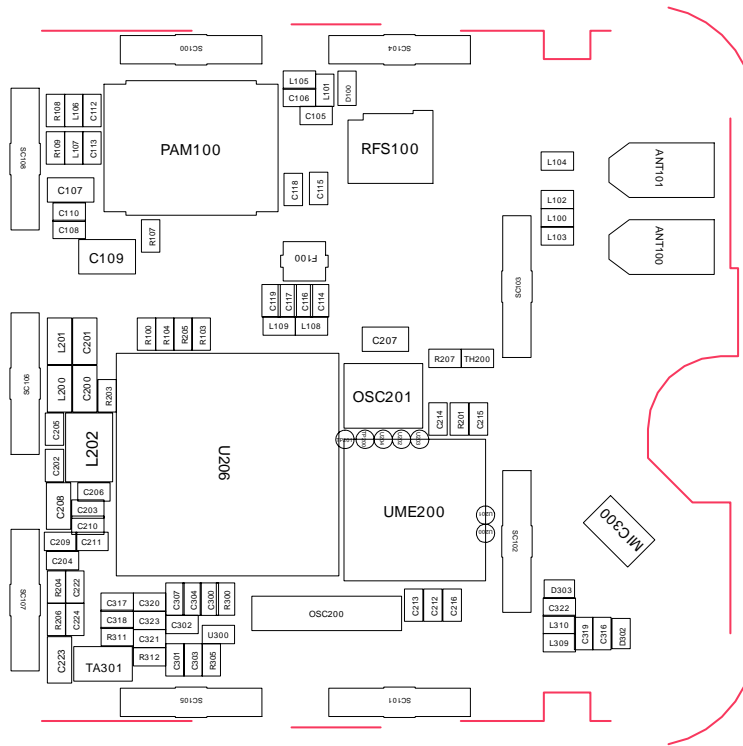
## 9-1. Power On



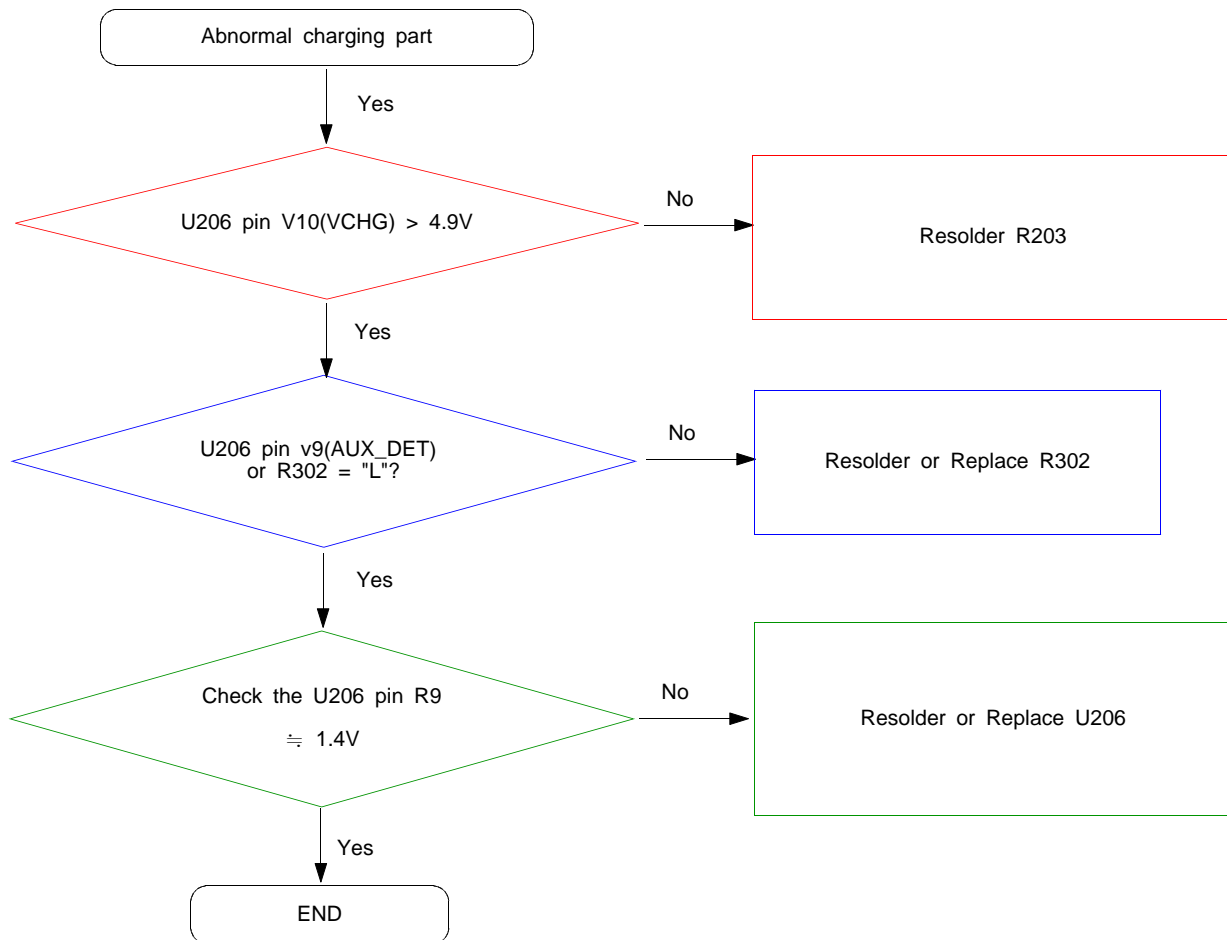


## 9-2. Initial

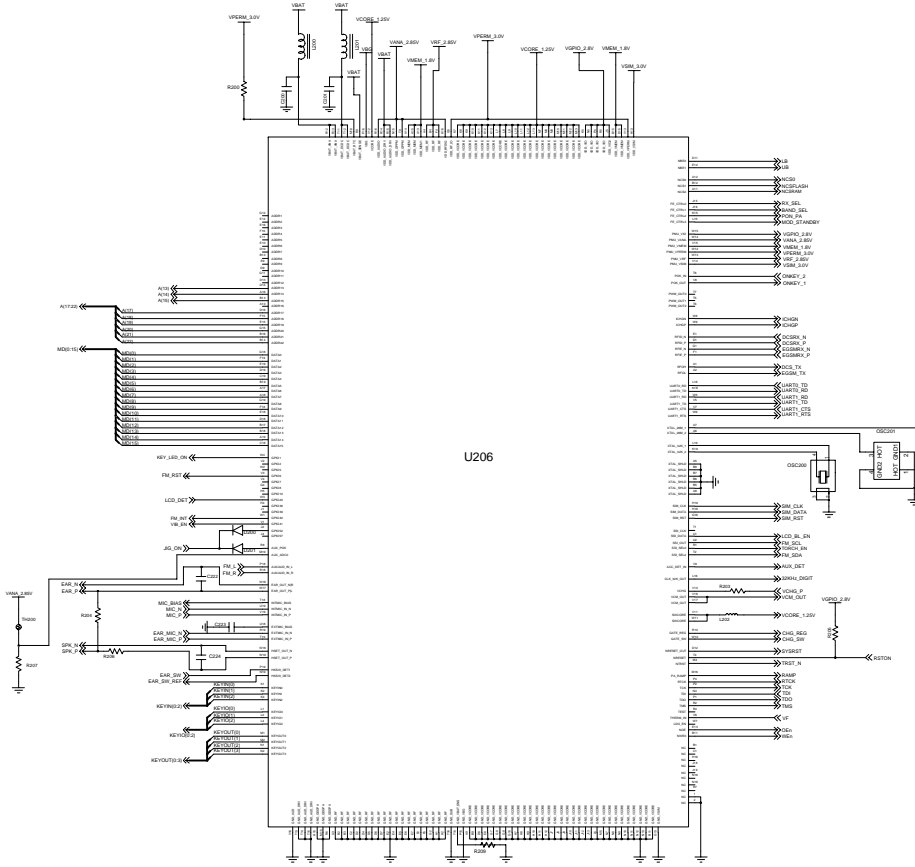
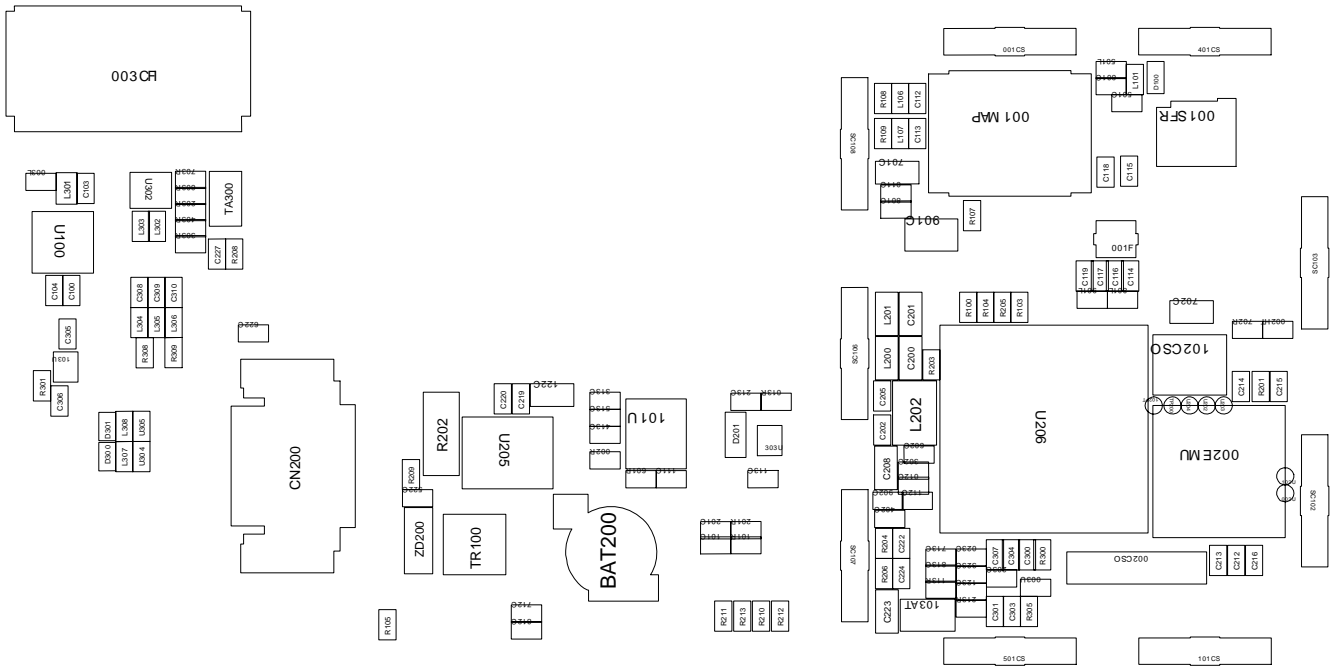




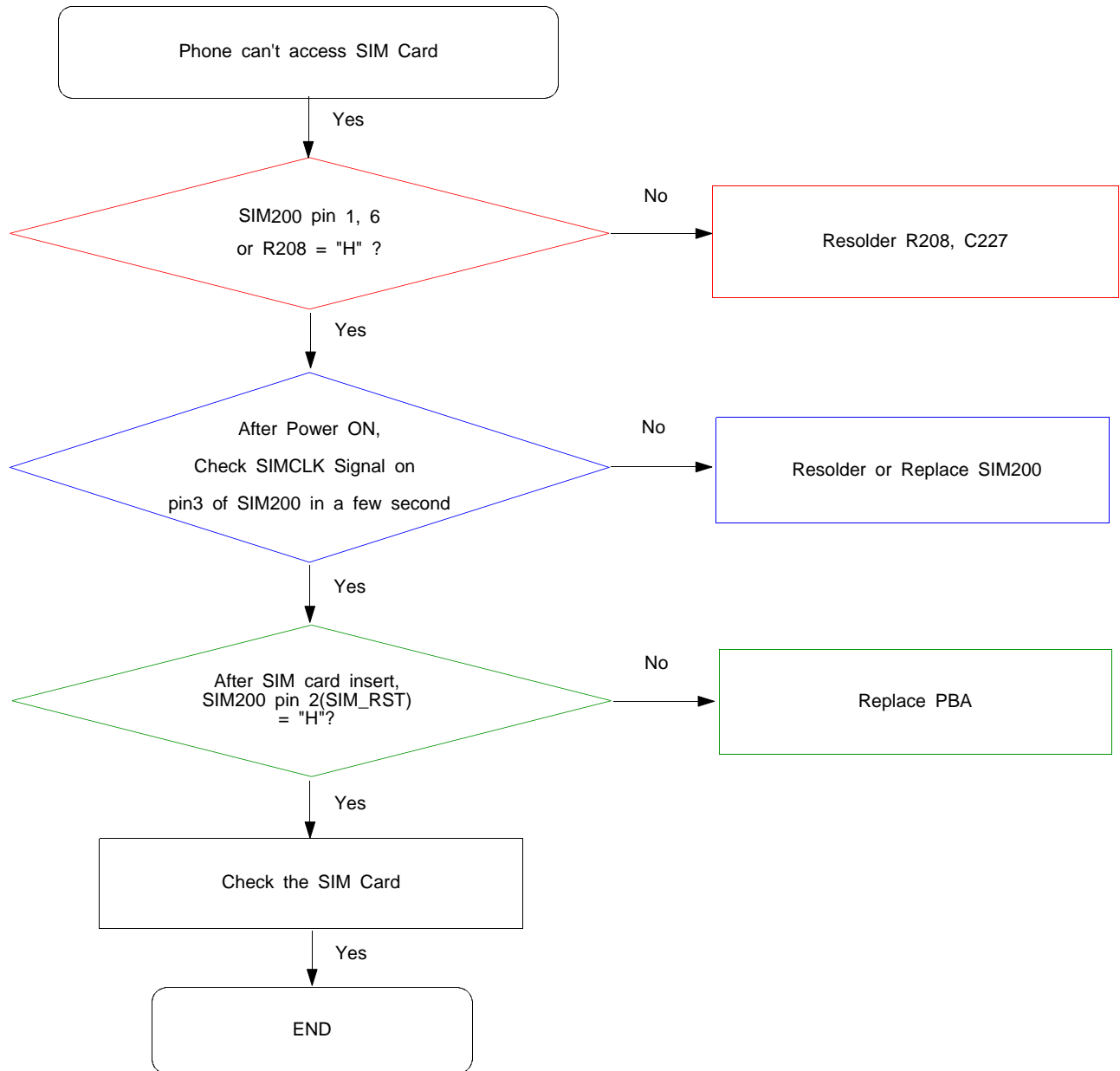
### 9-3. Charging Part

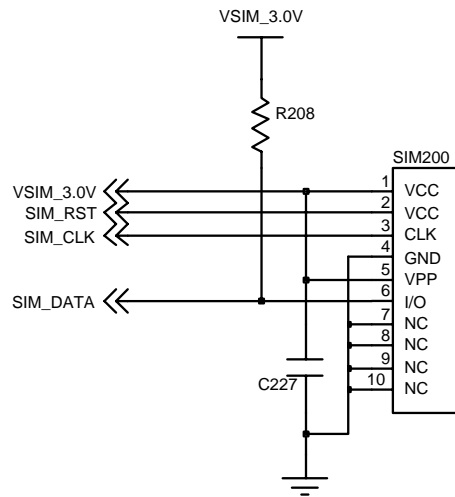
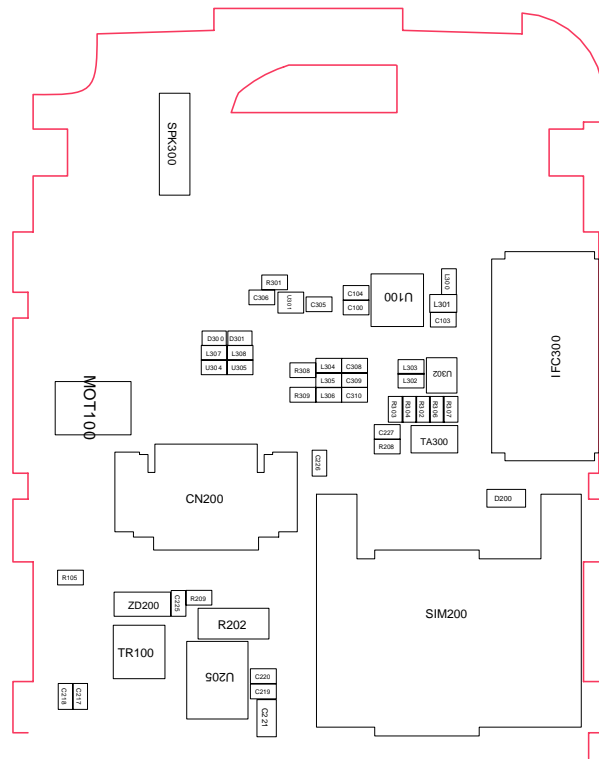


# Flow Chart of Troubleshooting



### 9-4. Sim Part

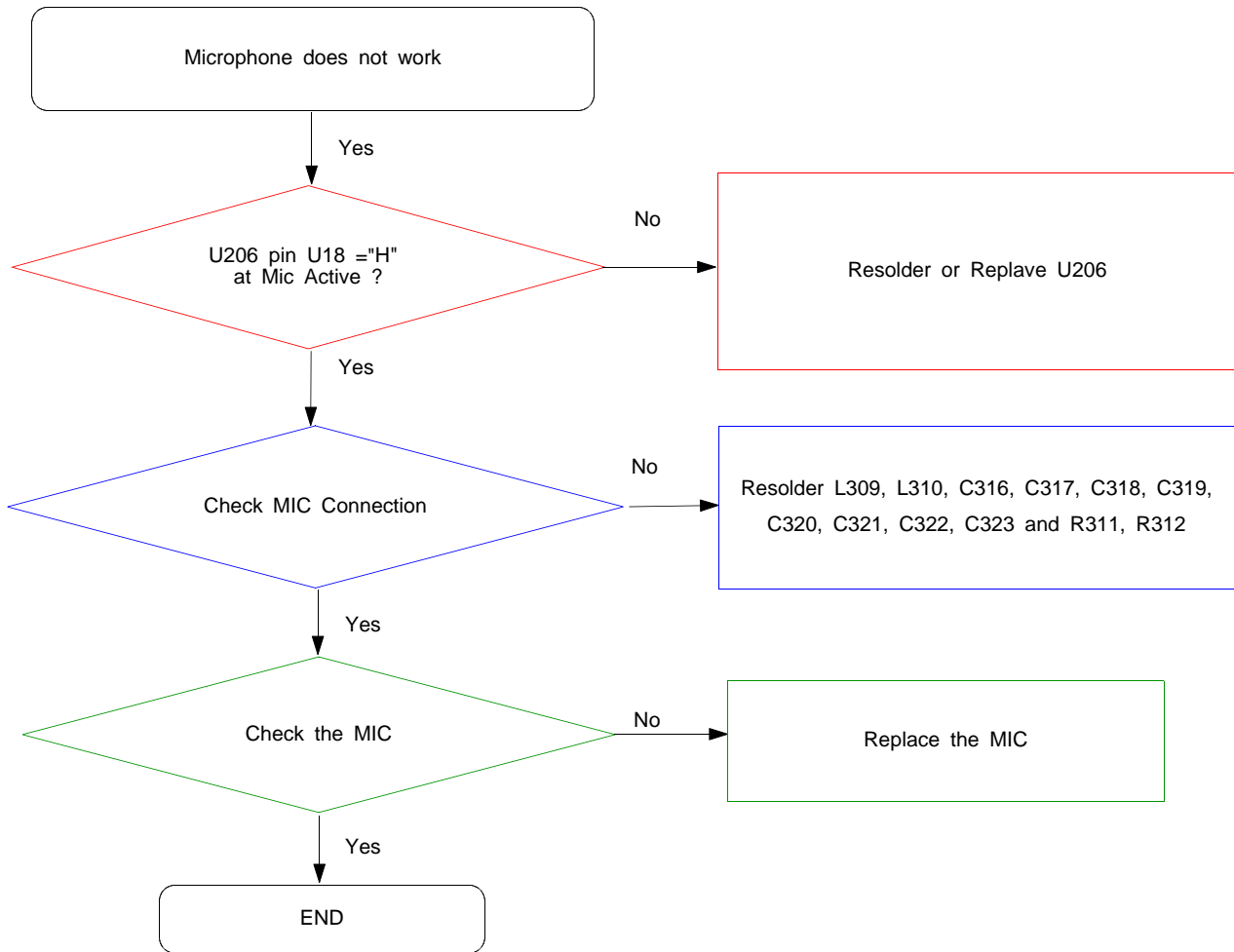




# SIM CONNECTOR

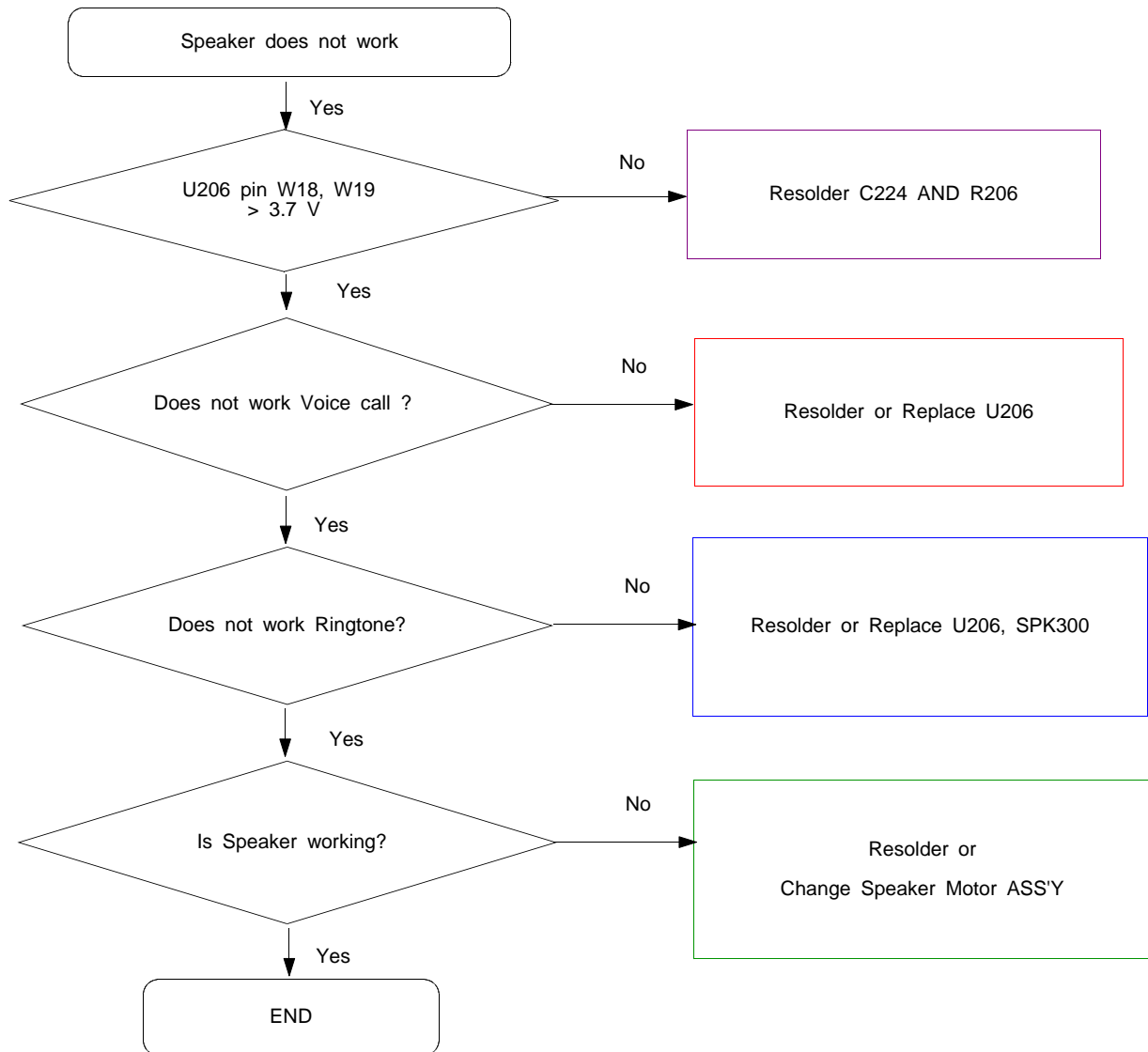


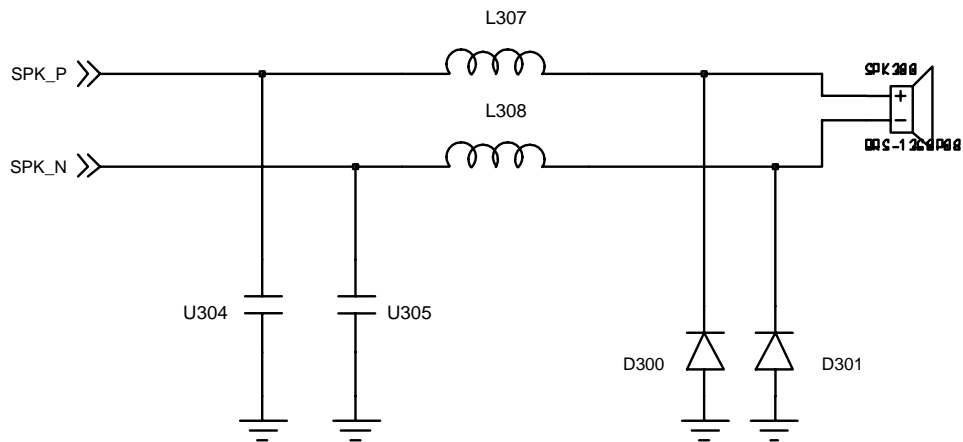
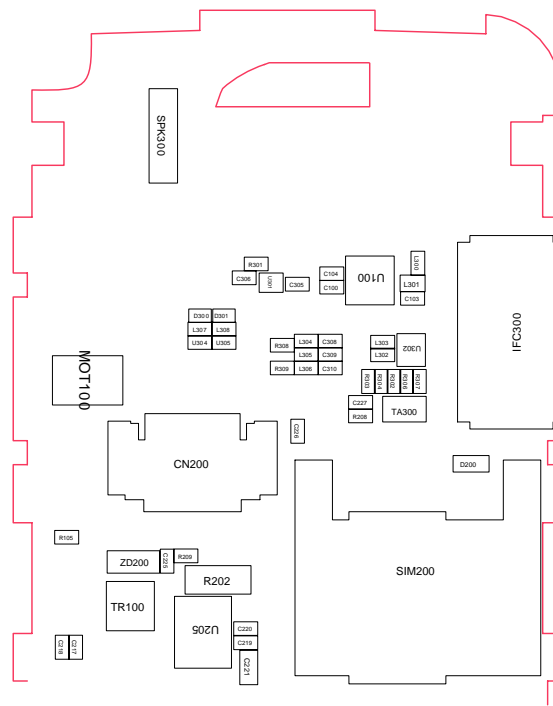
### 9-5. Microphone Part





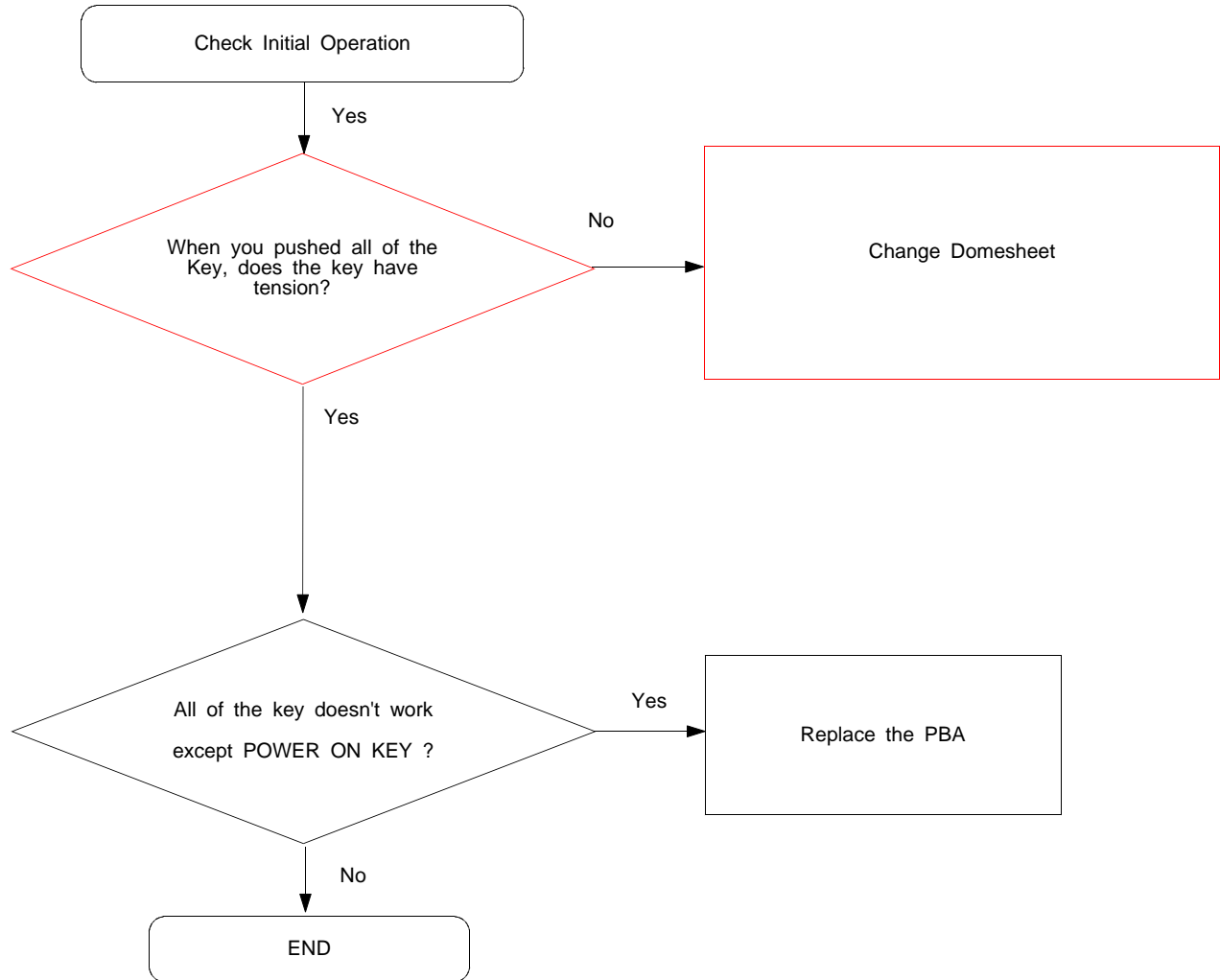
## 9-6. Speaker Part

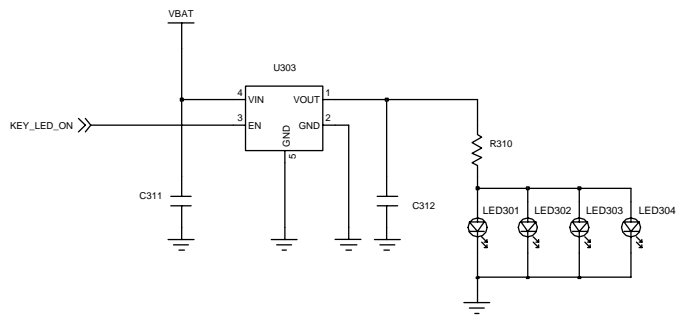
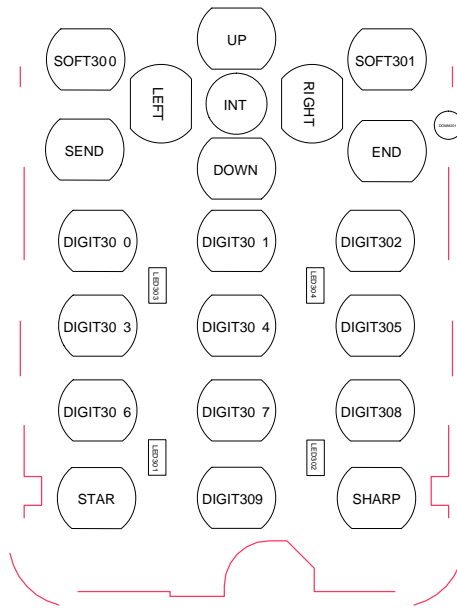




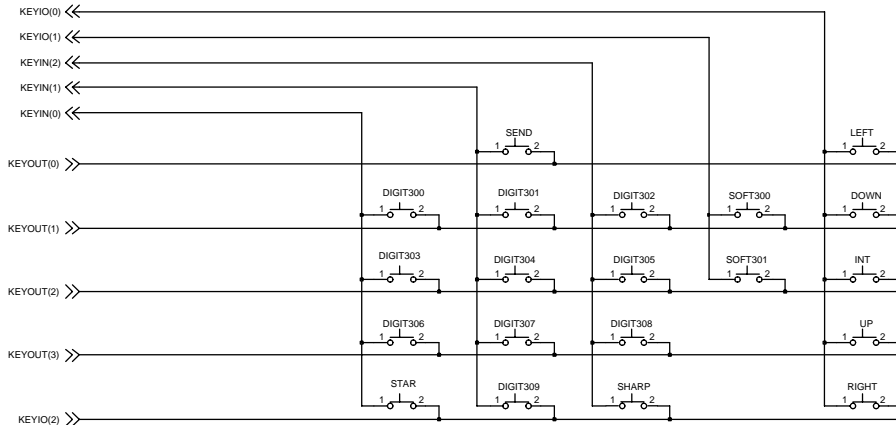
# SPEAKER

## 9-7. Key Data Input



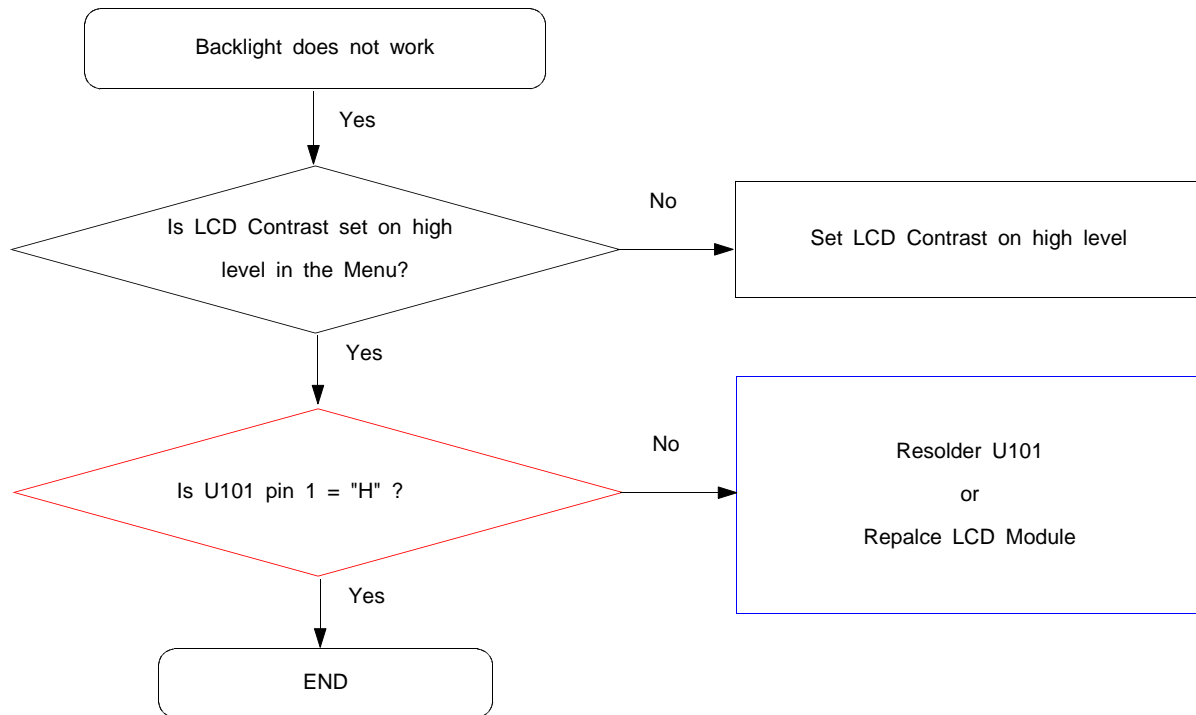


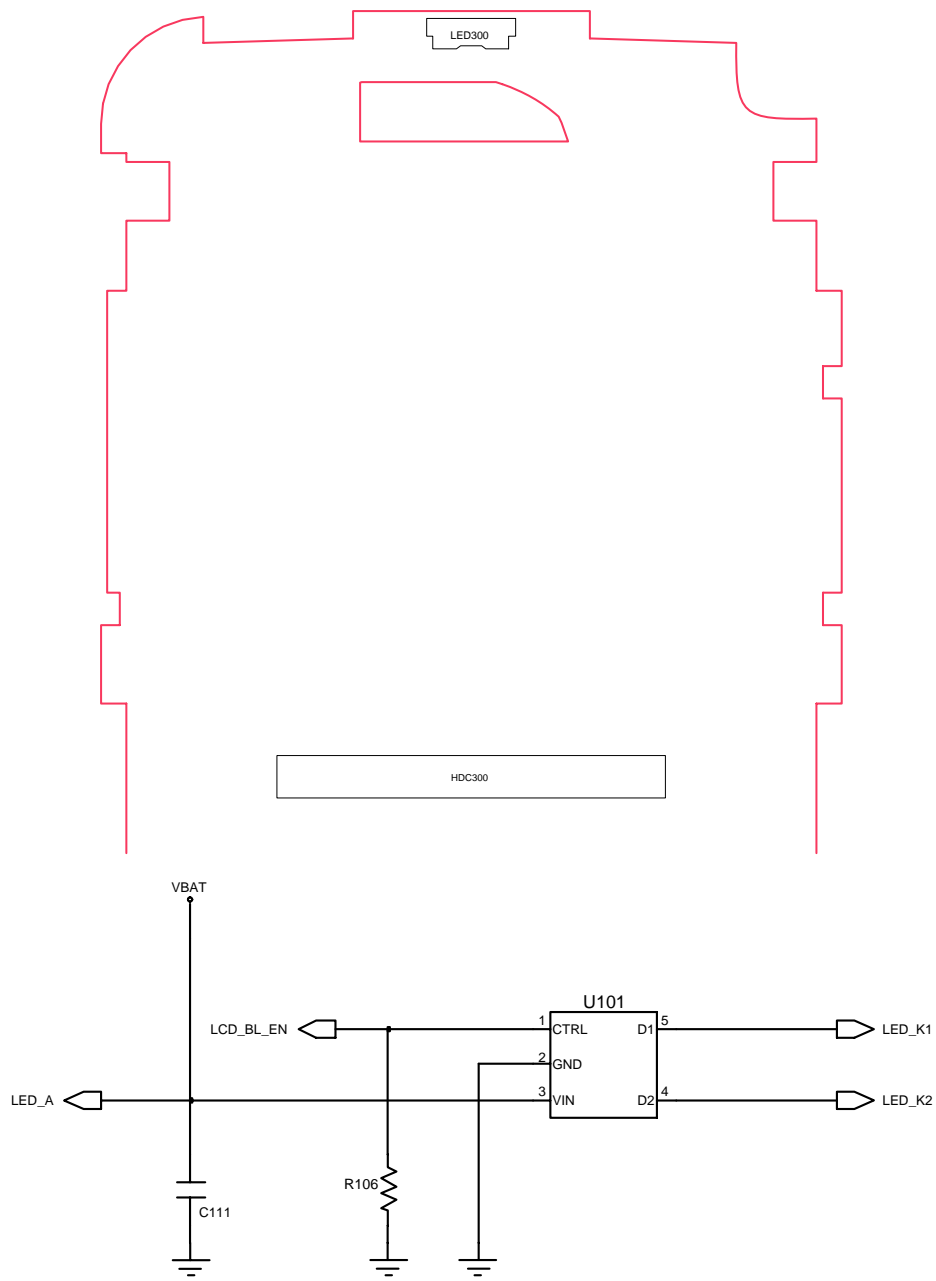
## KEY LED



## KEY MAP

## 9-8. Back Light (for Color Main LCD)

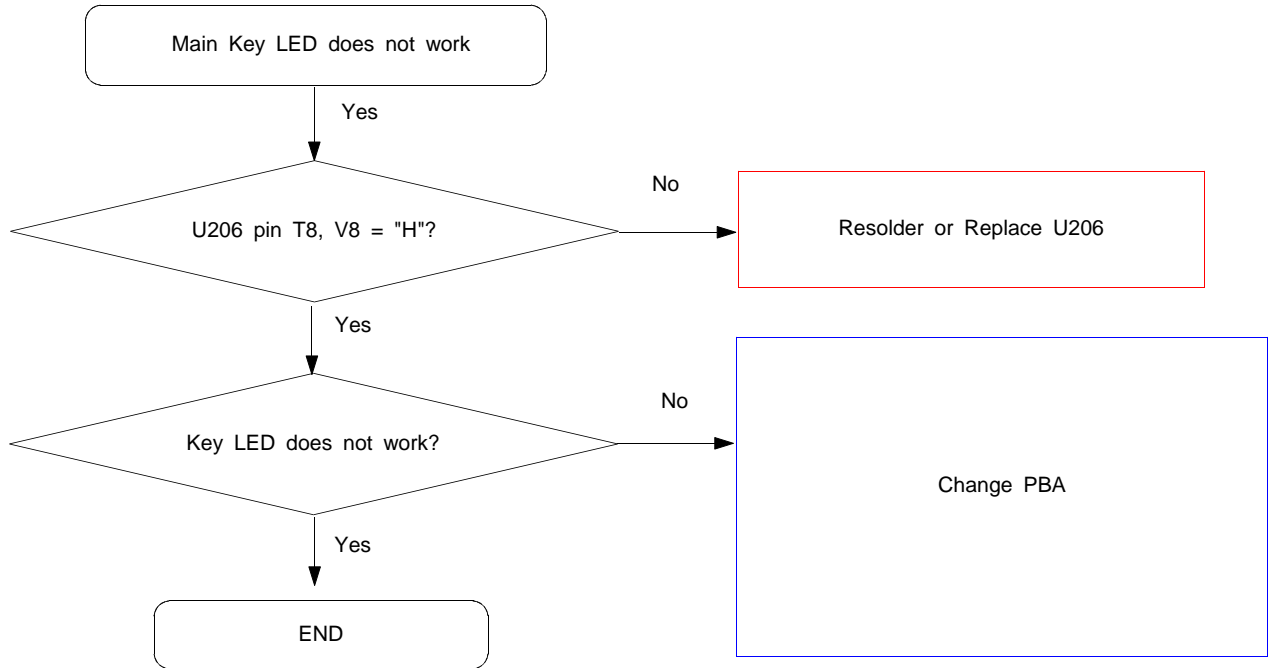




## LCD BACKLIGHT

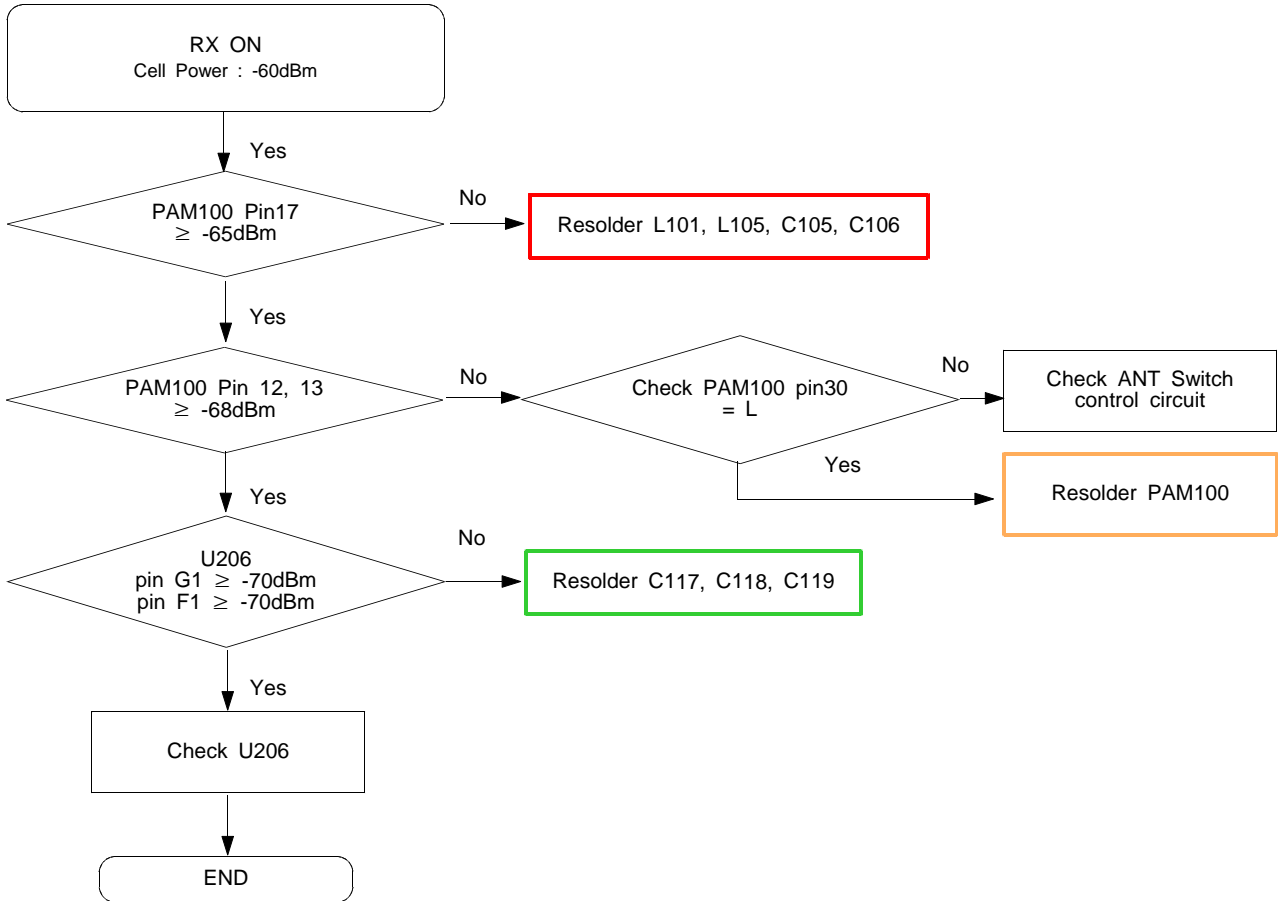


### 9-9. Key Back Light

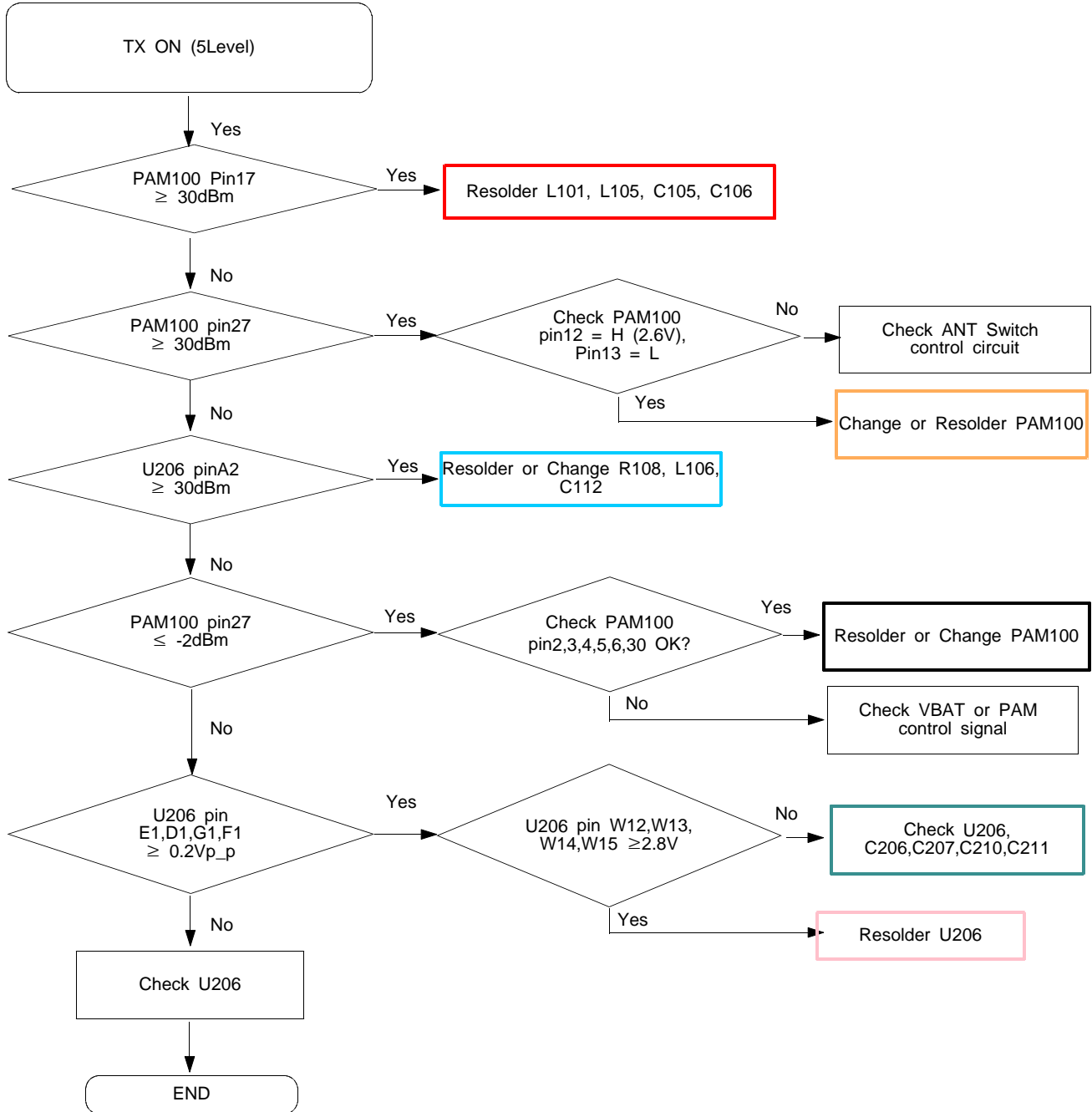




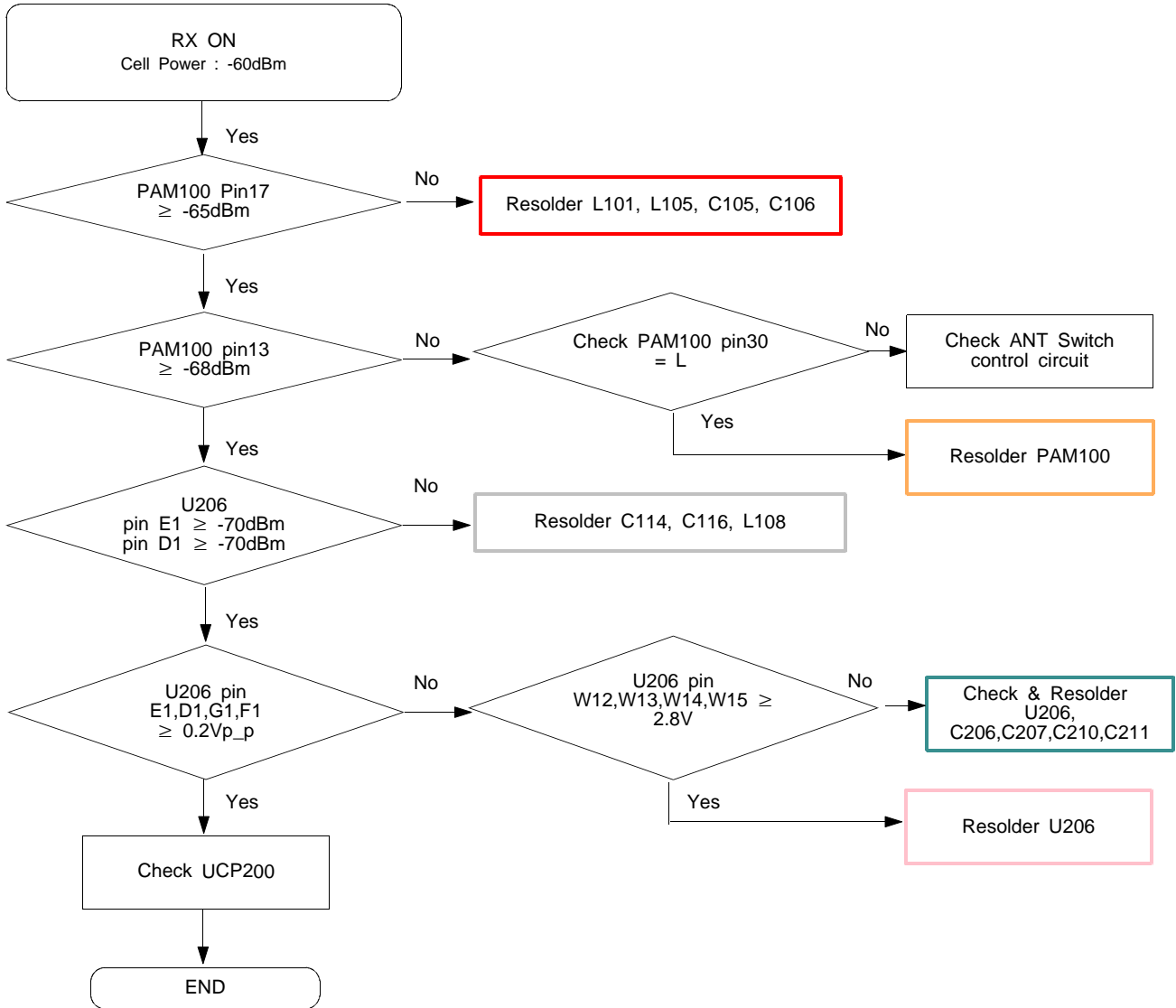
9-12. GSM Receiver



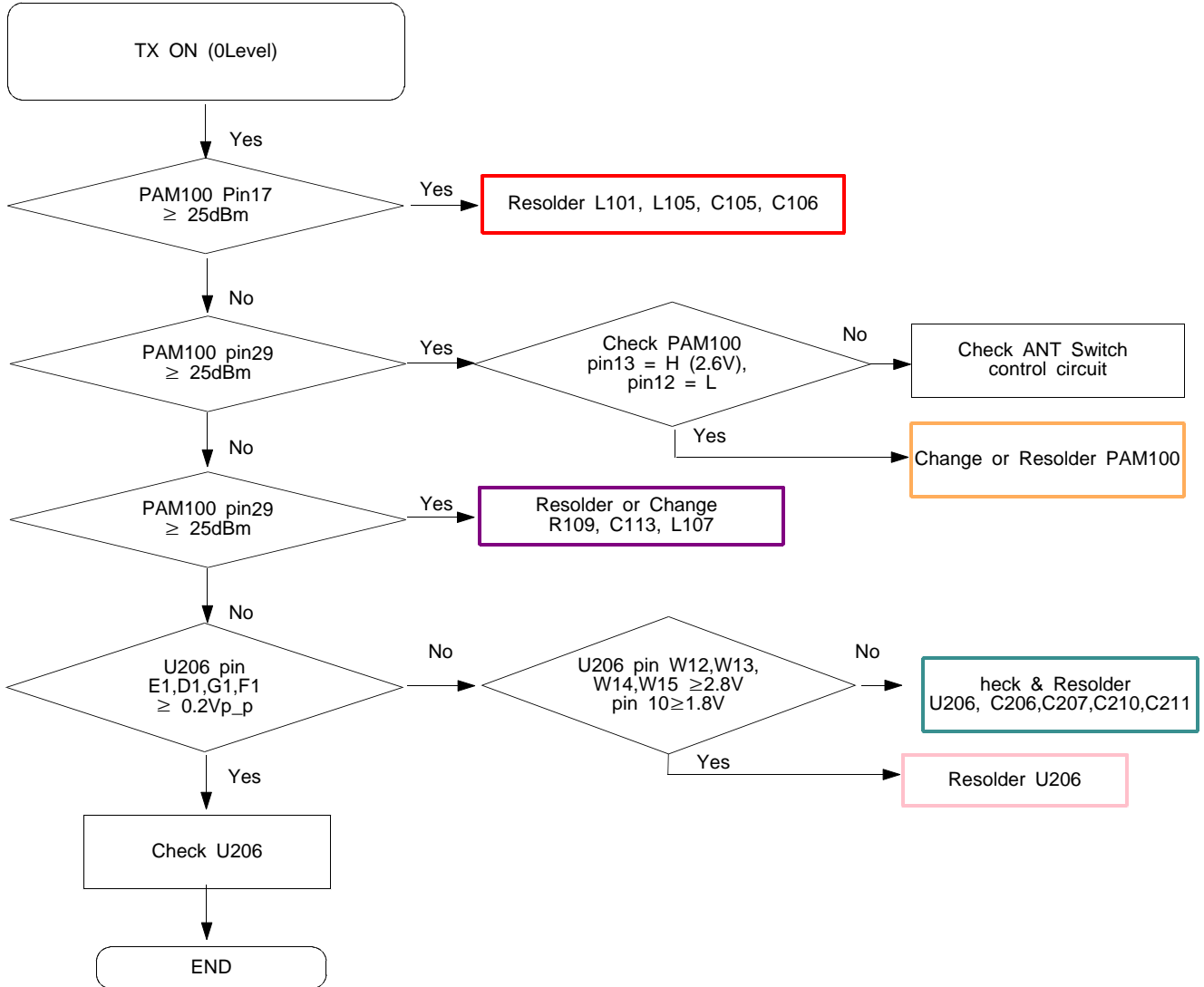
### 9-13. GSM Transmitter

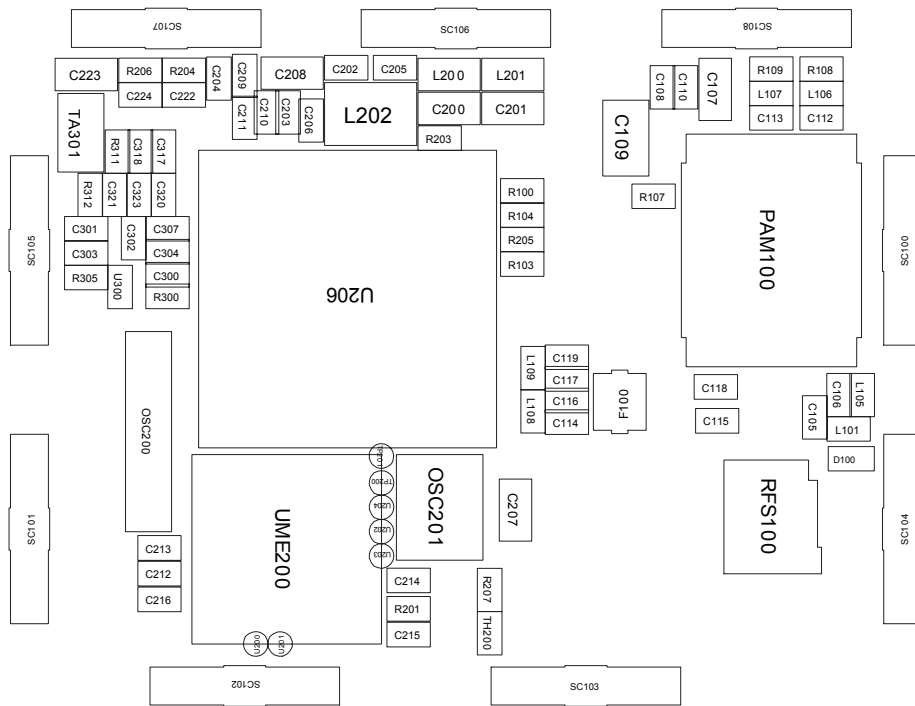


### 9-14. DCS Receiver



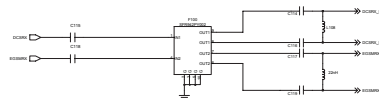
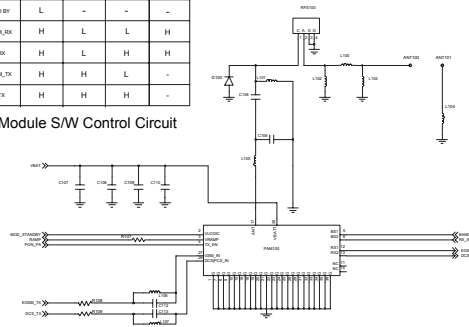
### 9-15. DCS Transmitter





	MOD_STANBY	FOR_PA	SWD_SEL	RX_SEL
STANDBY	L	-	-	-
ESDM_RX	H	L	L	H
DCL_RX	H	L	H	H
ESDM_TX	H	H	L	-
DCL_TX	H	H	H	-

TX Module S/W Control Circuit



RF Part

# Flow Chart of Troubleshooting

