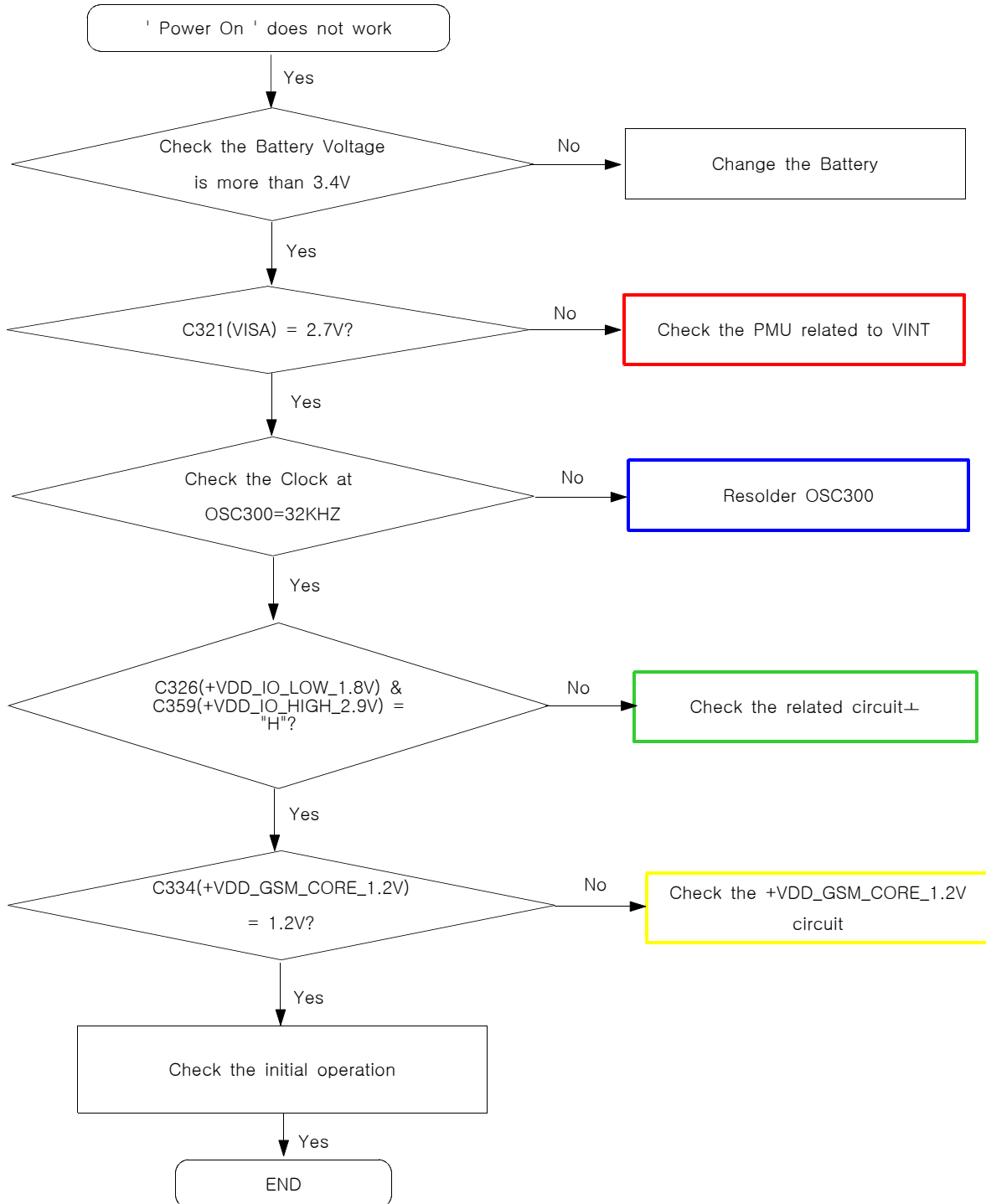
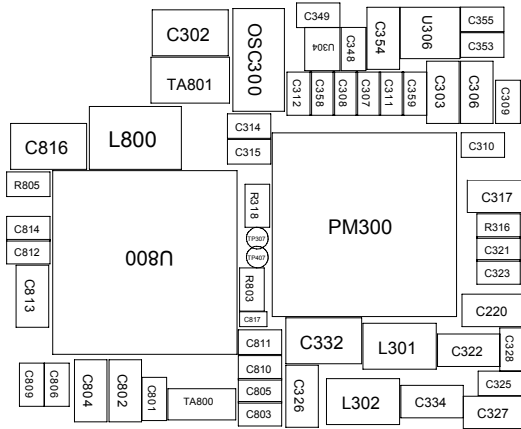
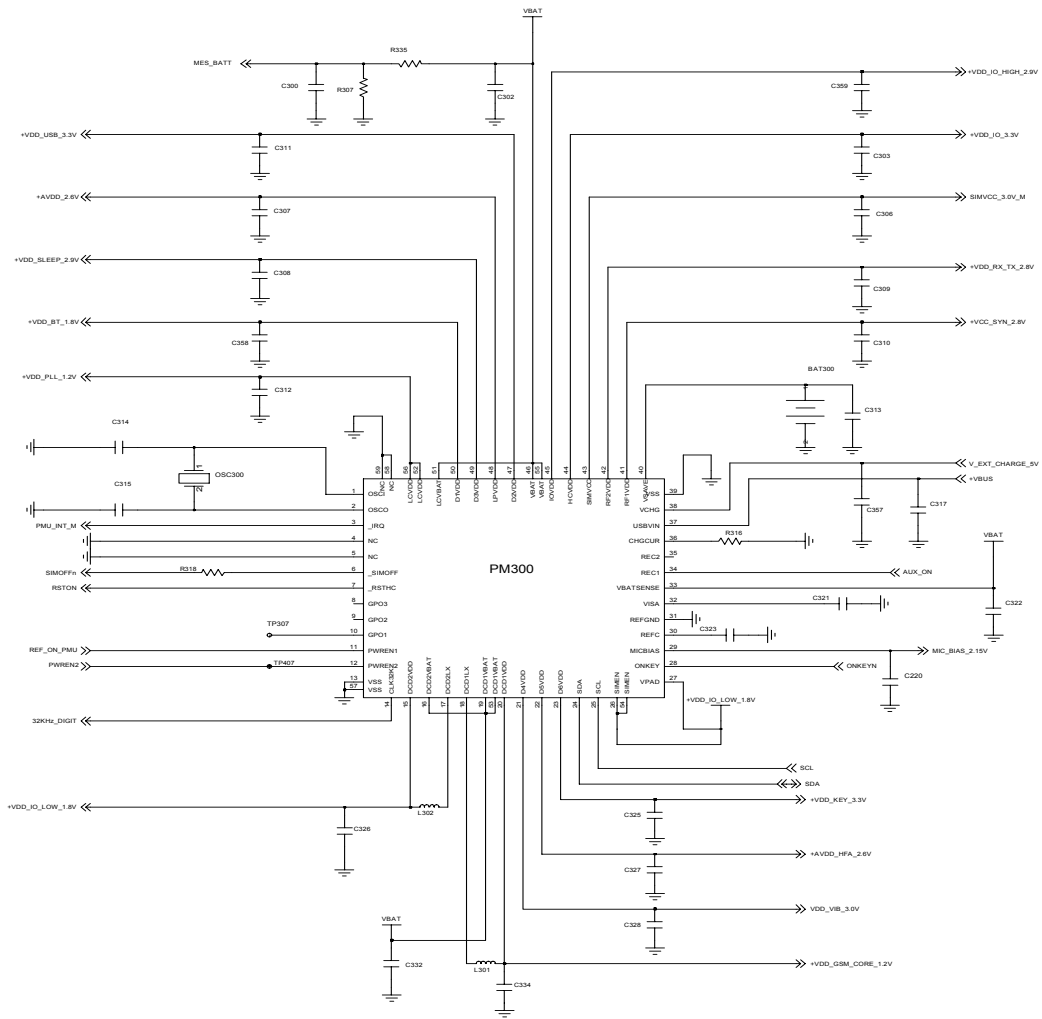


# 9. Flow Chart of Troubleshooting

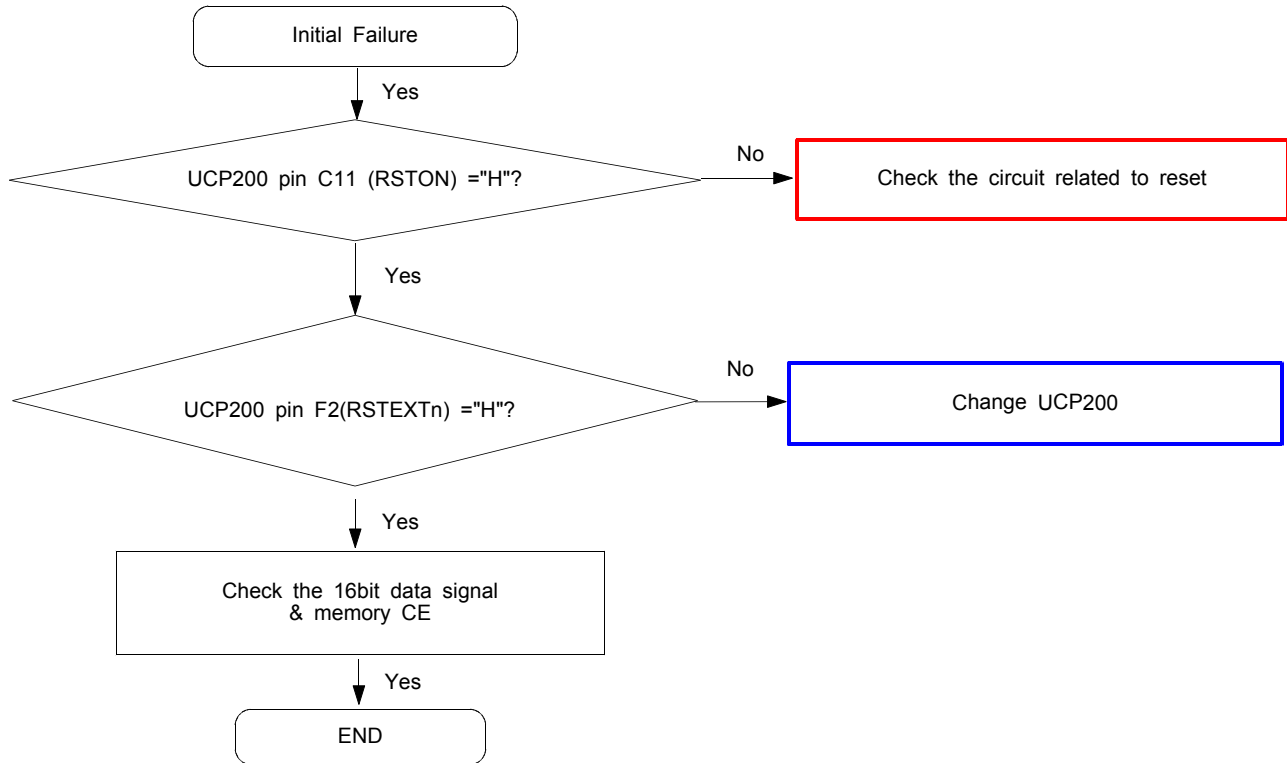
## 9-1. Power On

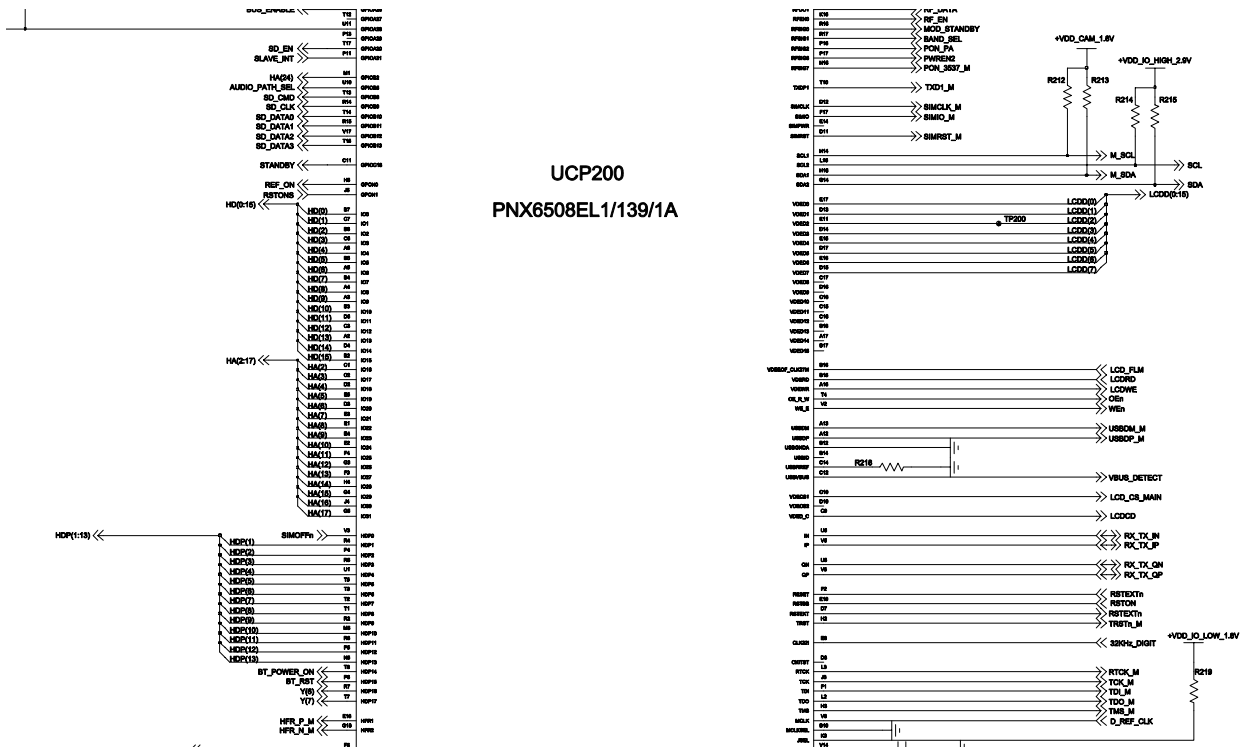


# Flow Chart of Troubleshooting

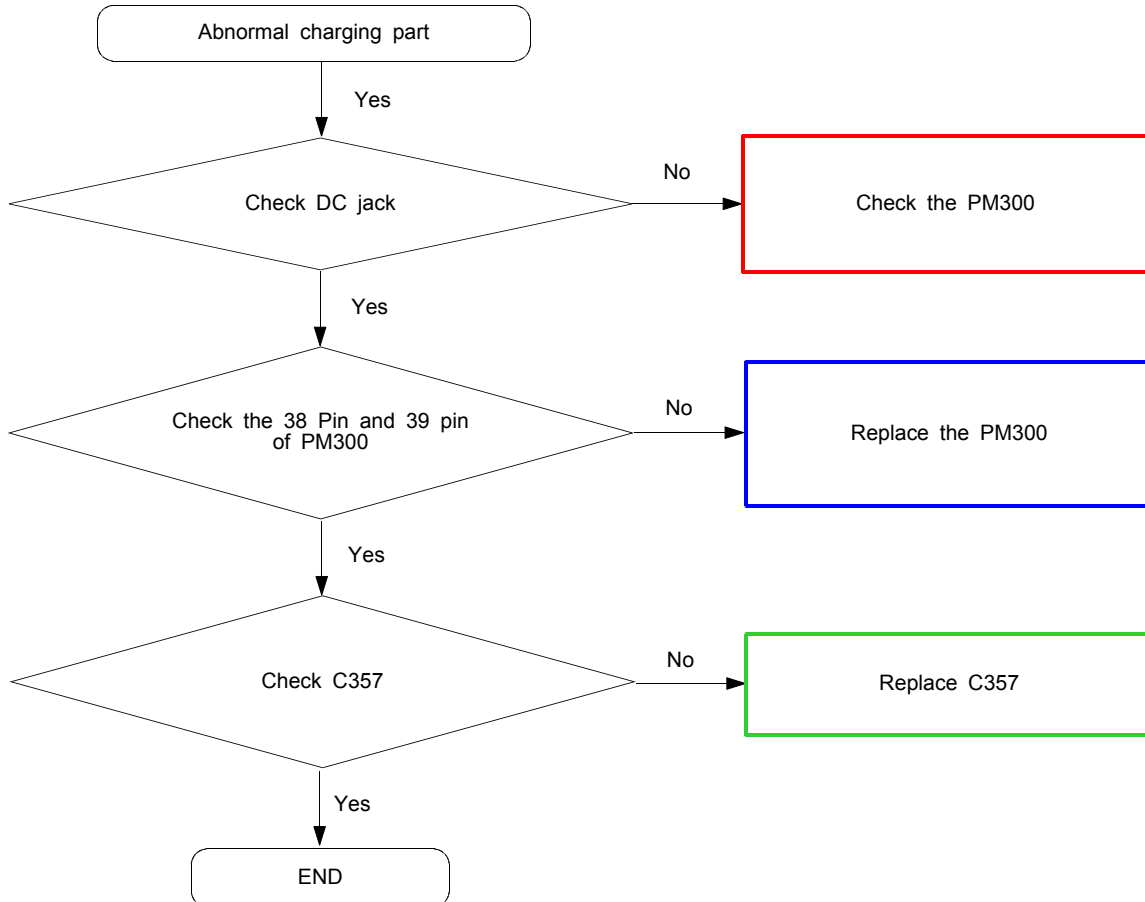


## 9-2. Initial

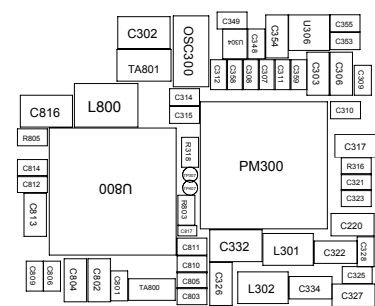
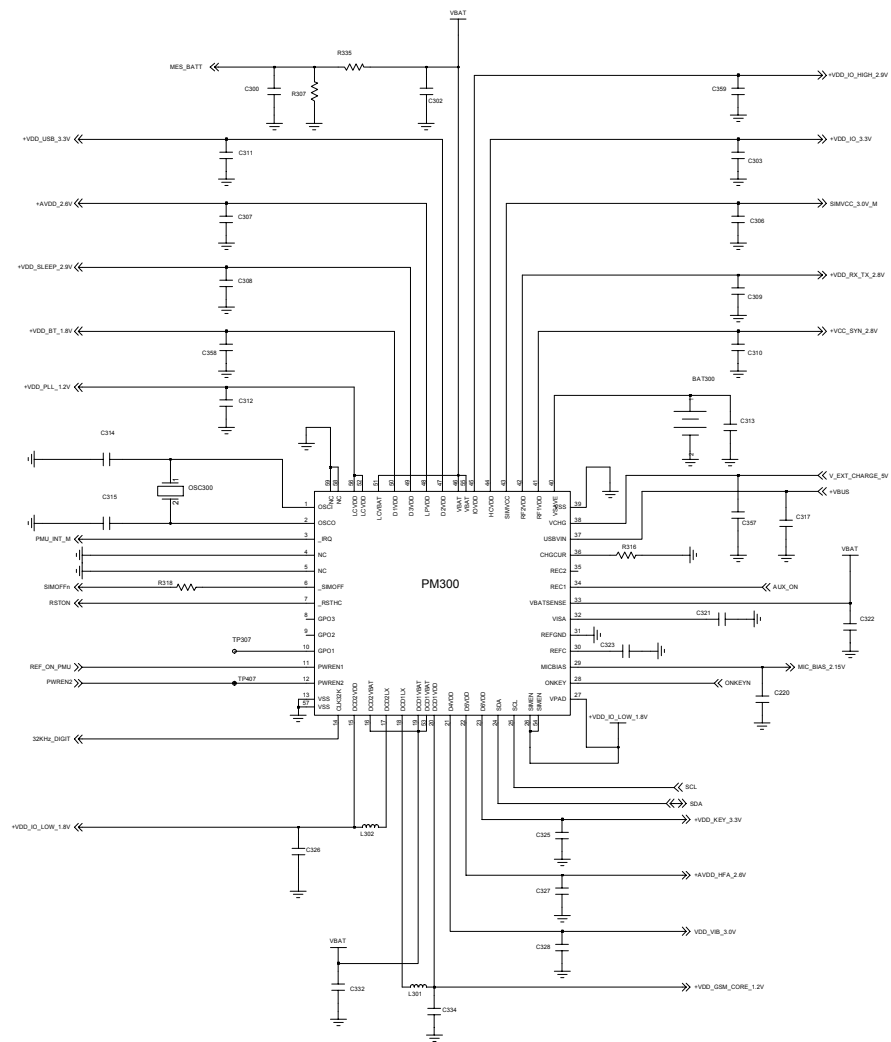




## 9-3. Charging Part

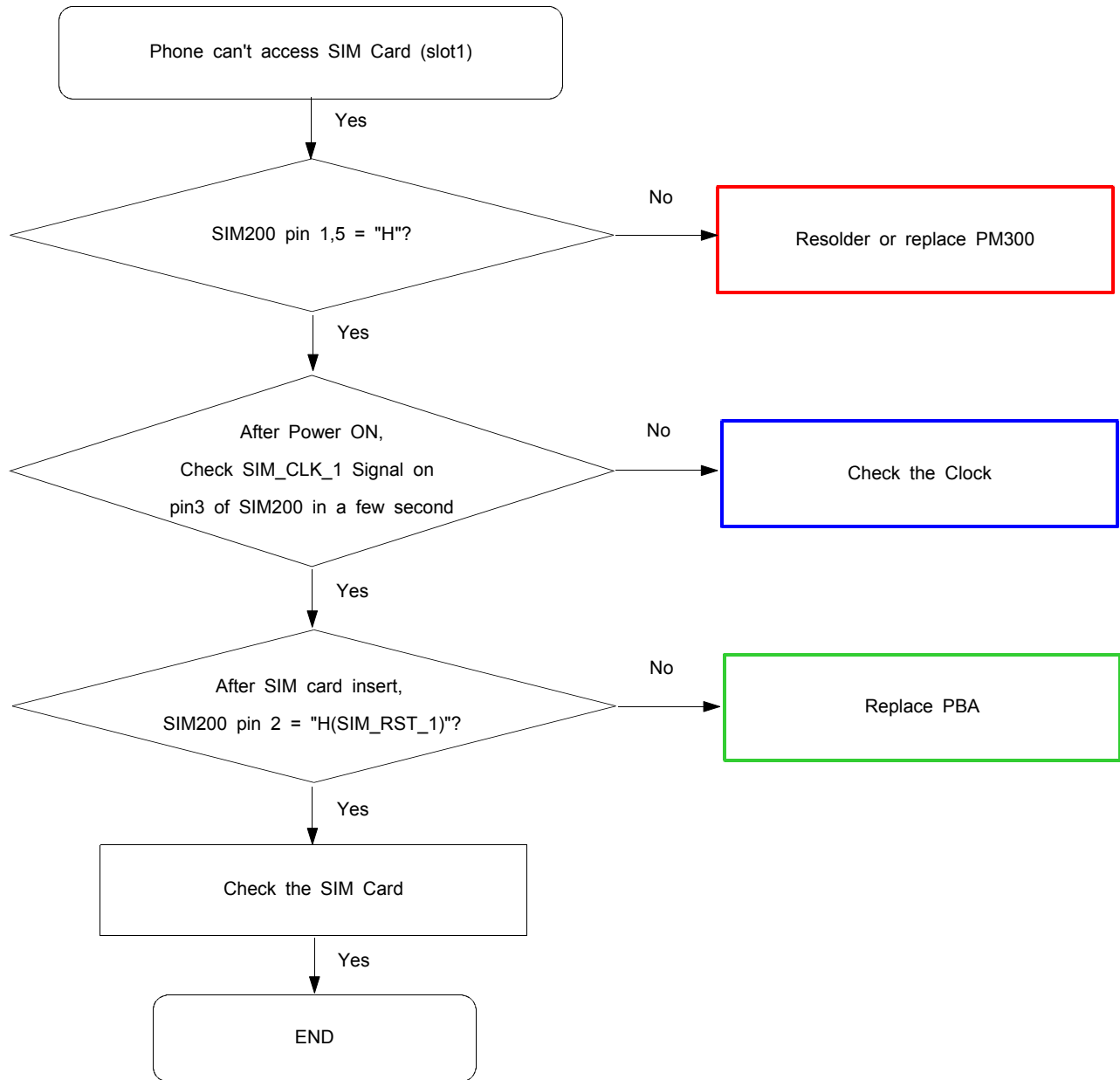


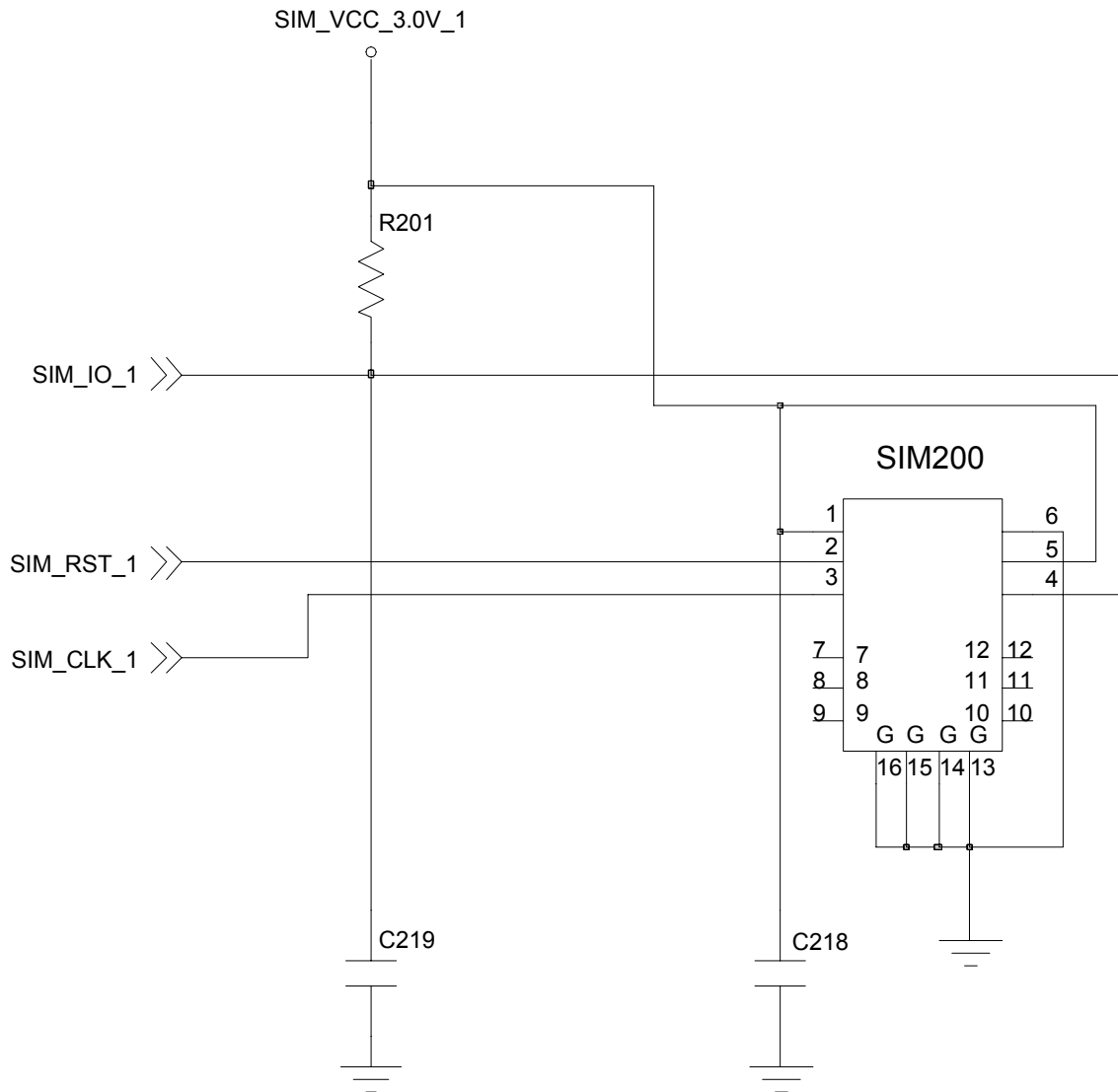
Flow Chart of Troubleshooting



## 9-4. Sim Part

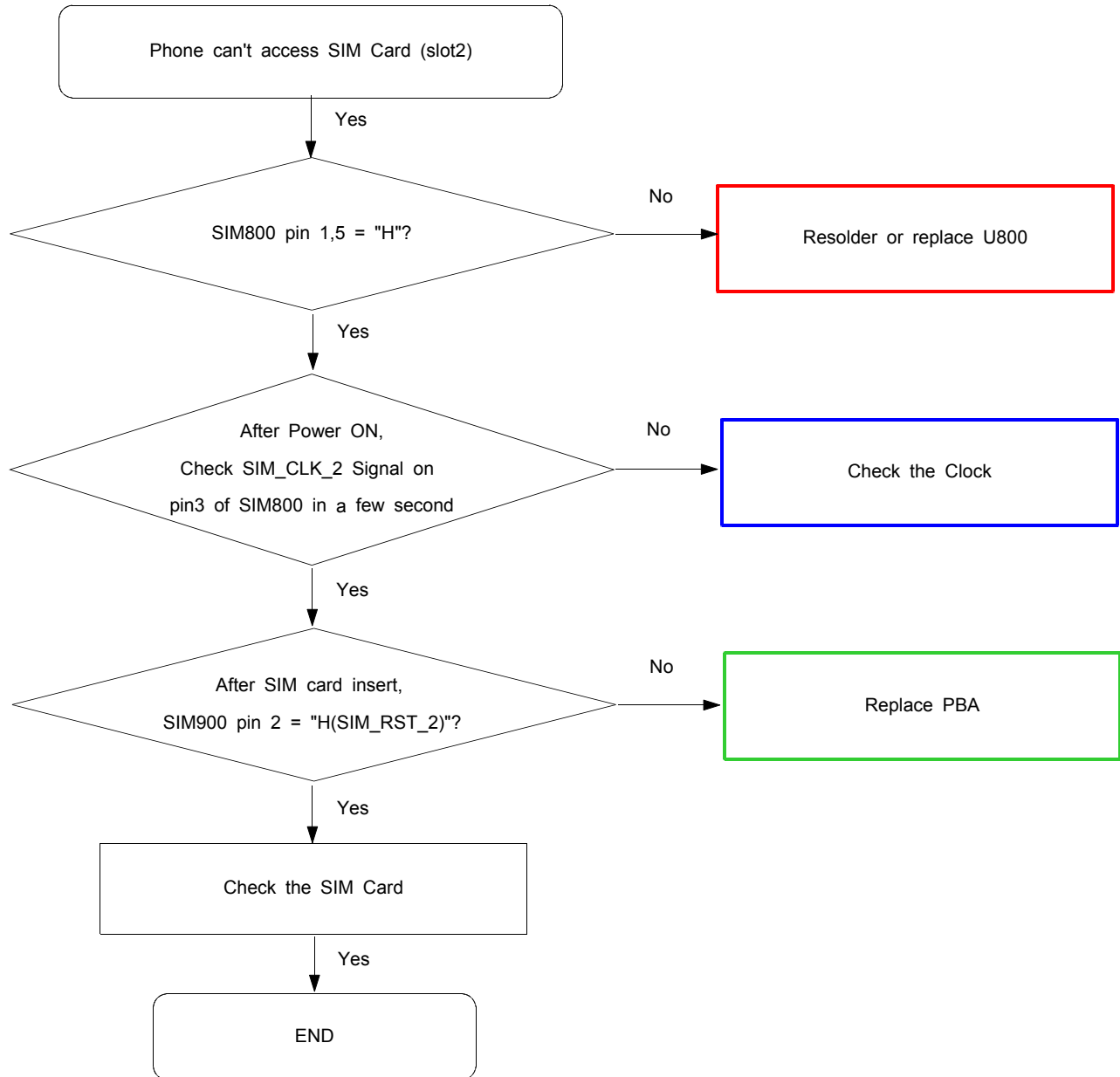
### 1) Master

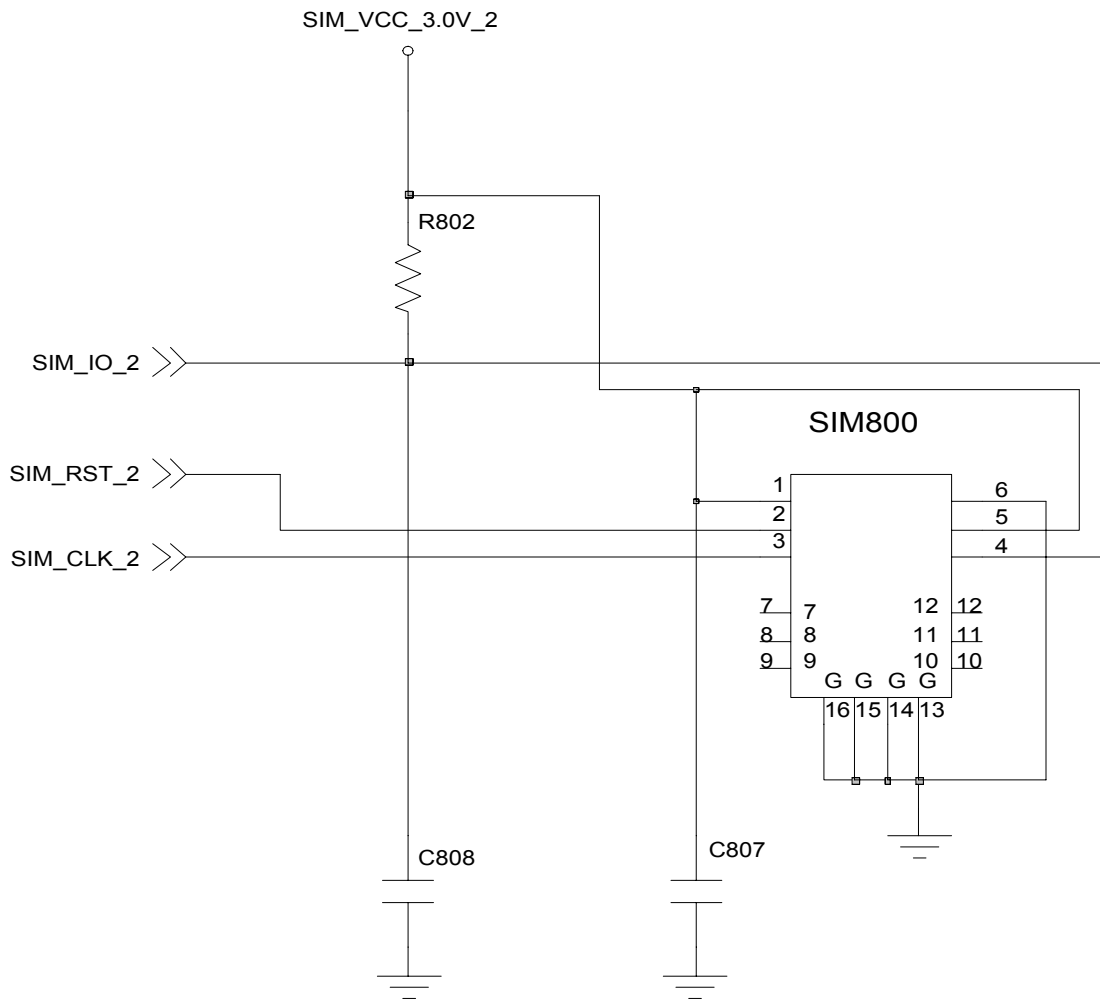






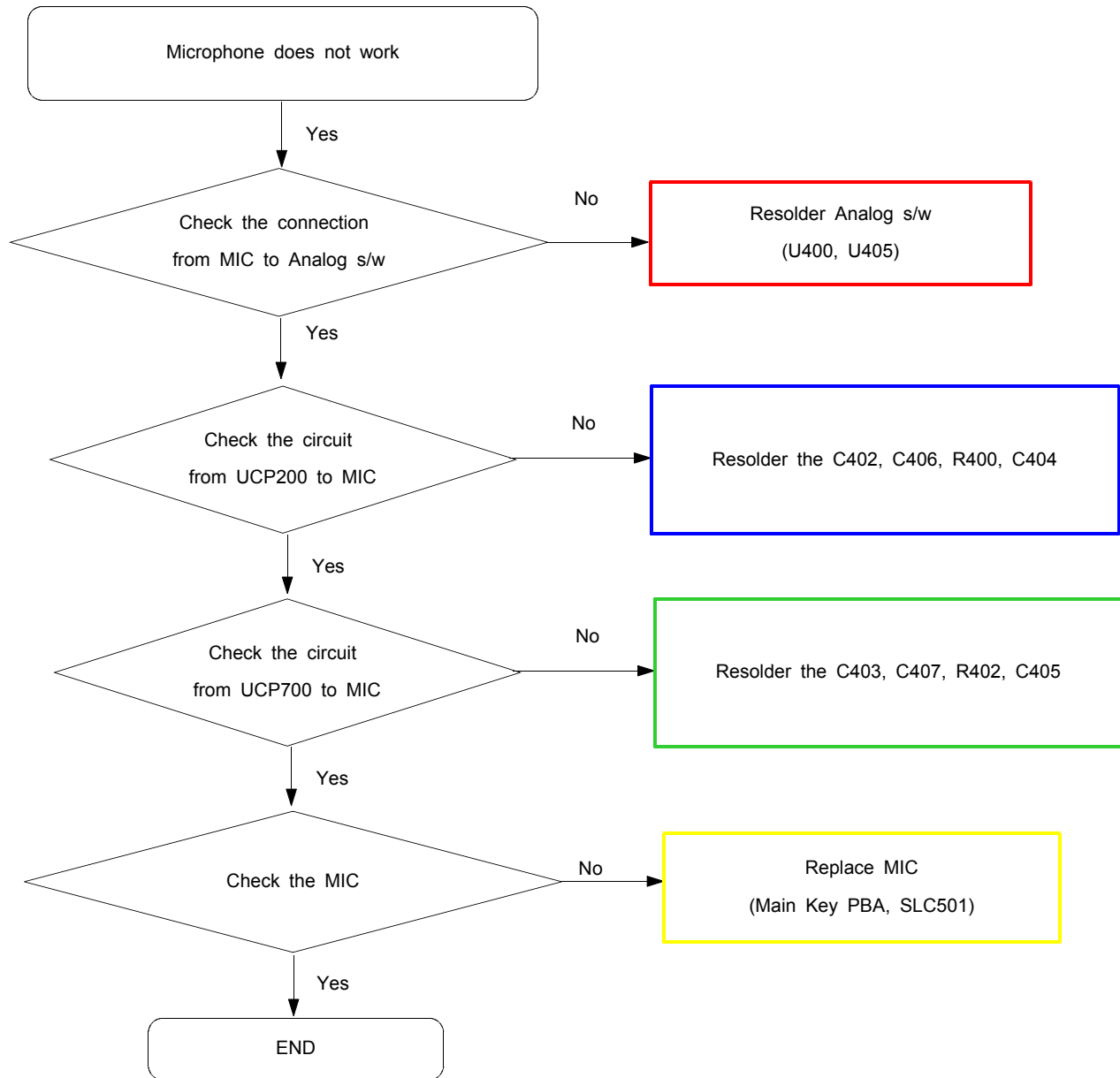
2)Slave

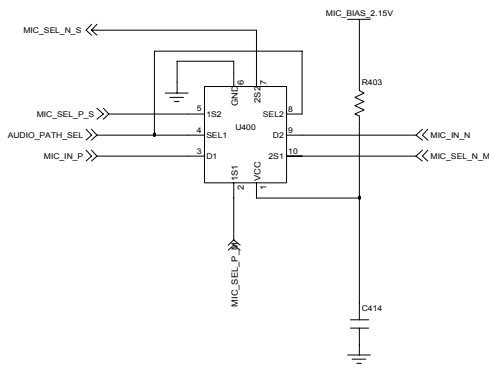




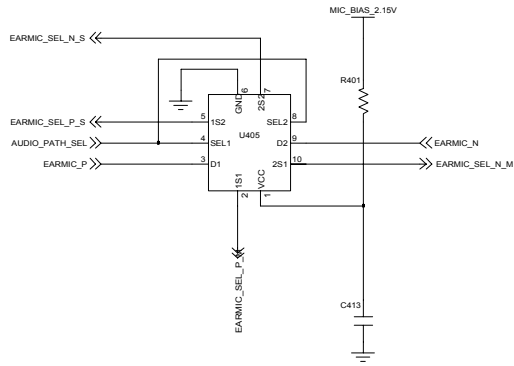
# SIM2 [SLAVE]

### 9-5. Microphone Part

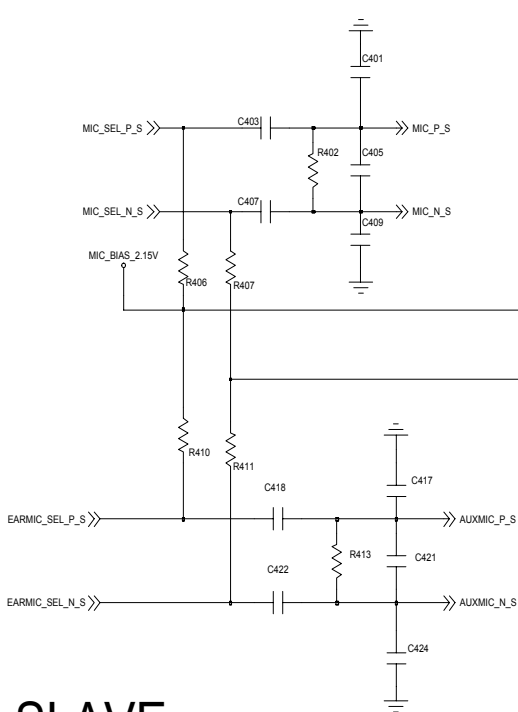




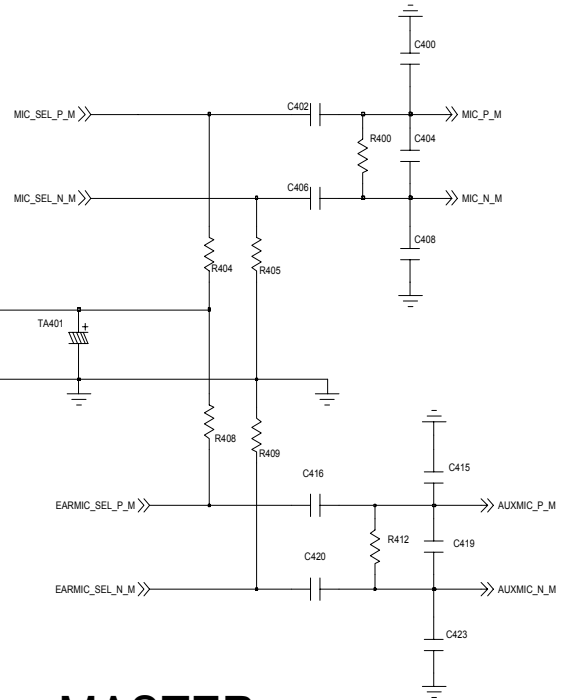
MIC SEL



EARMIC SEL

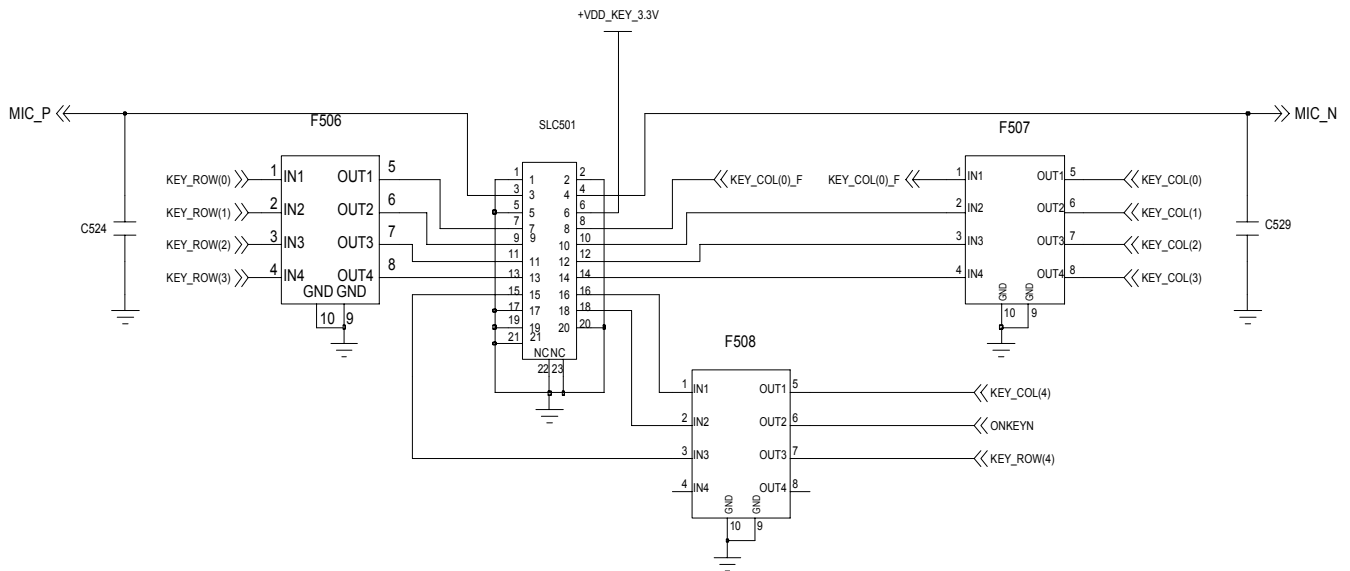


SLAVE

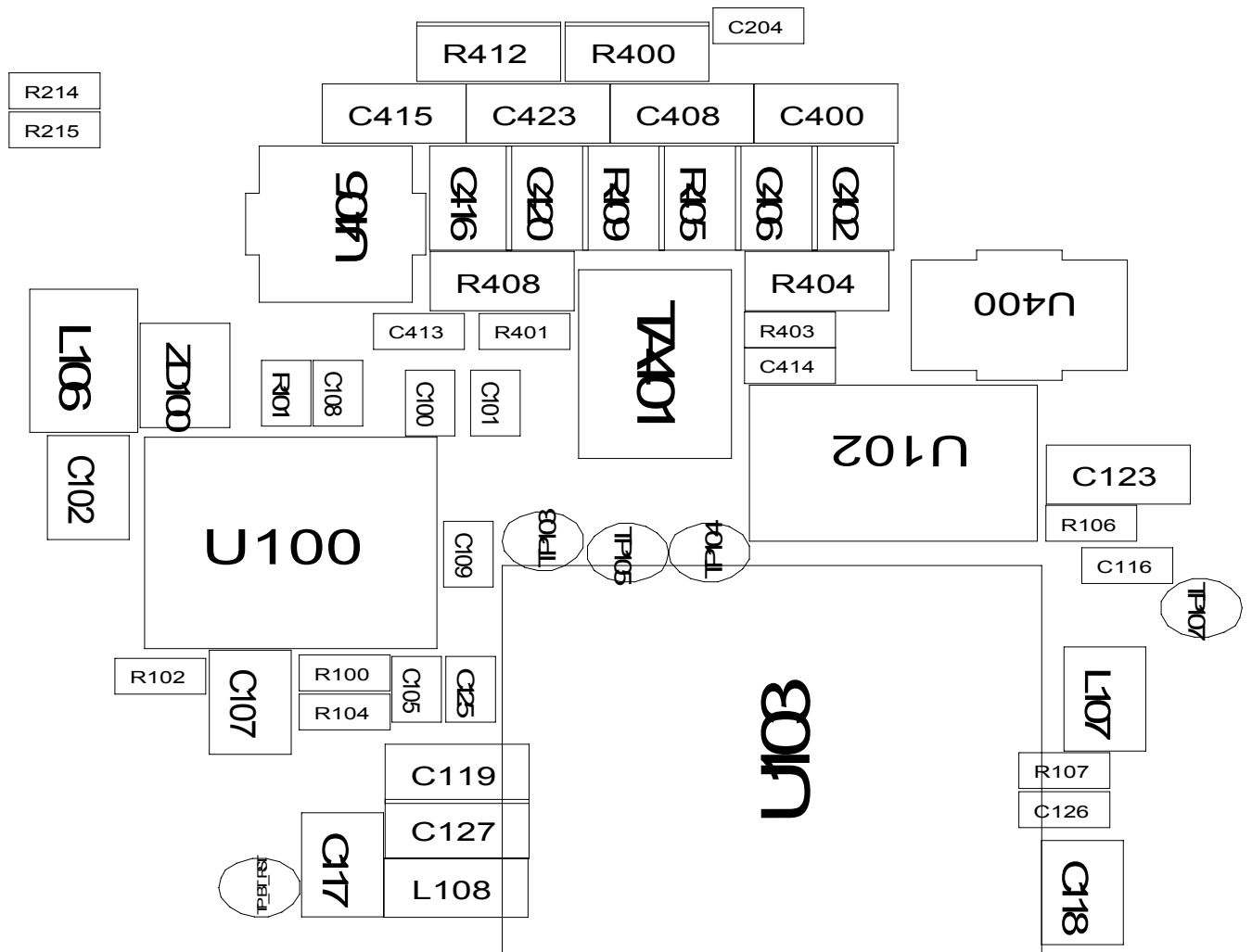


MASTER

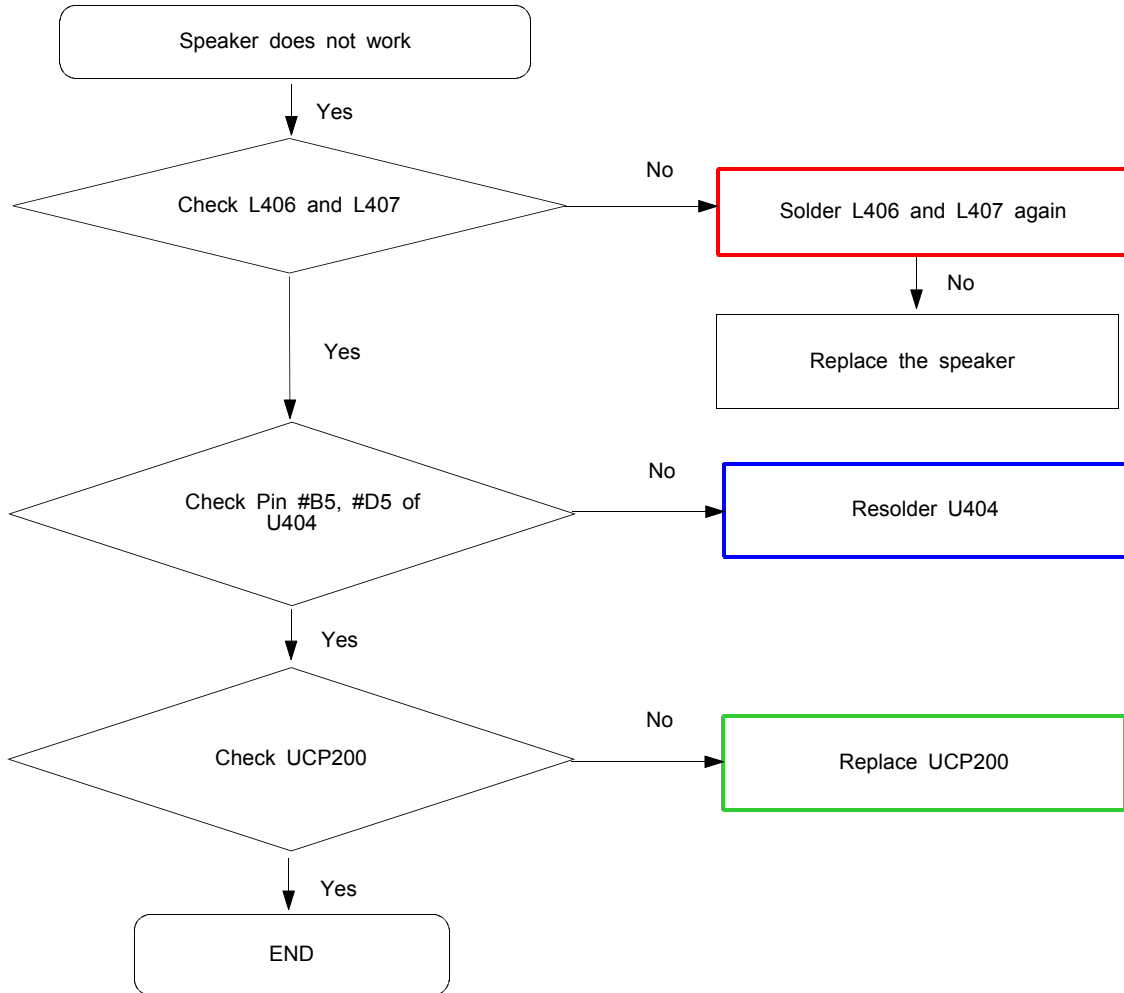
MICROPHONE

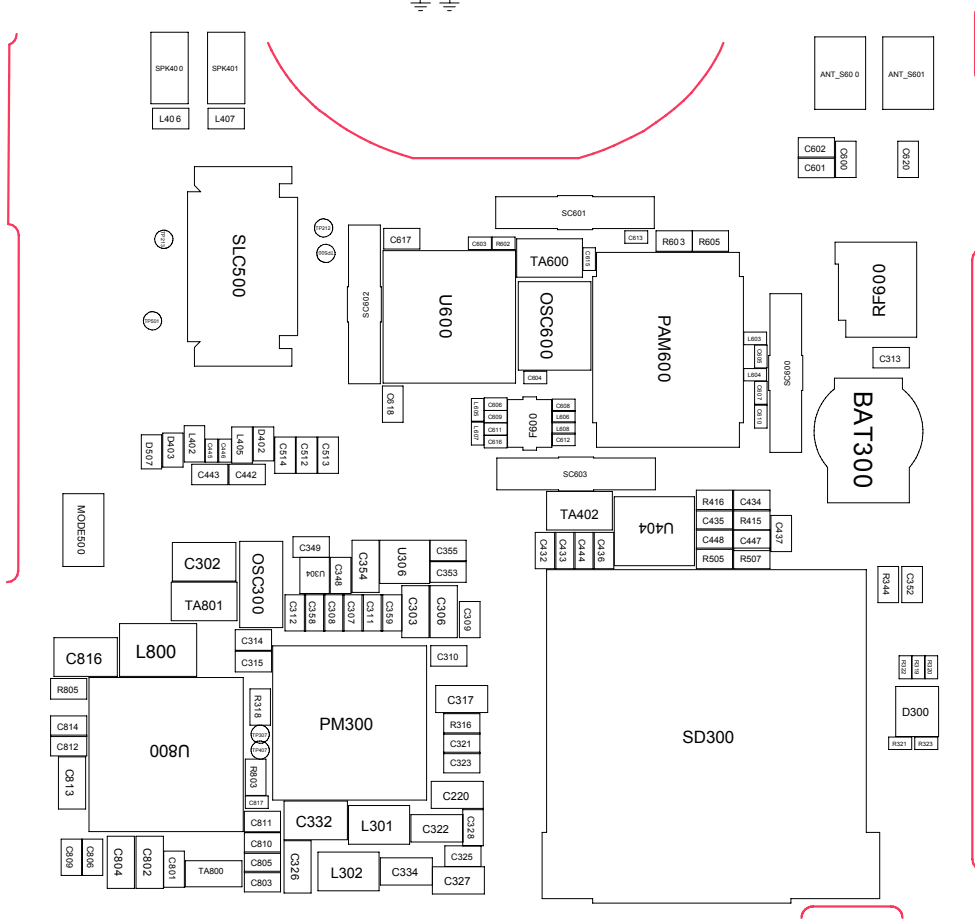
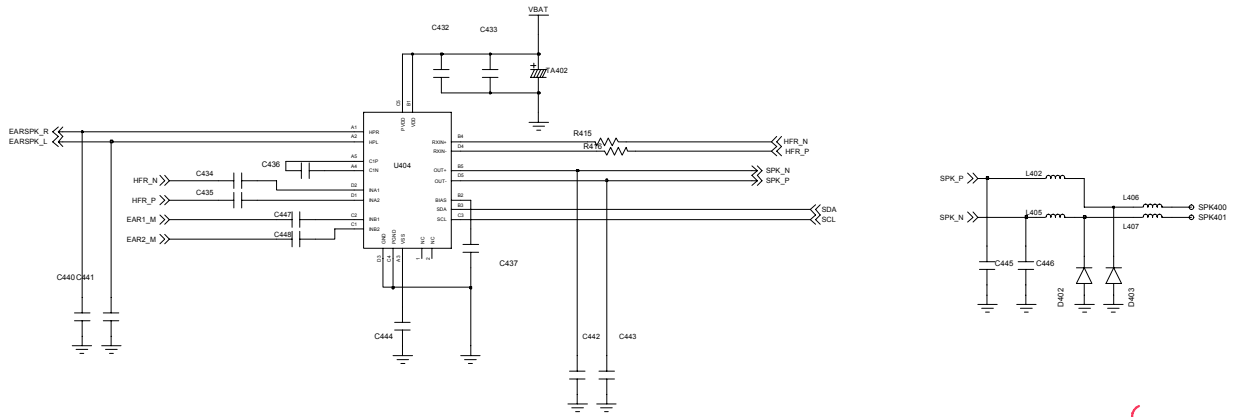


## KEY\_CONNECTOR

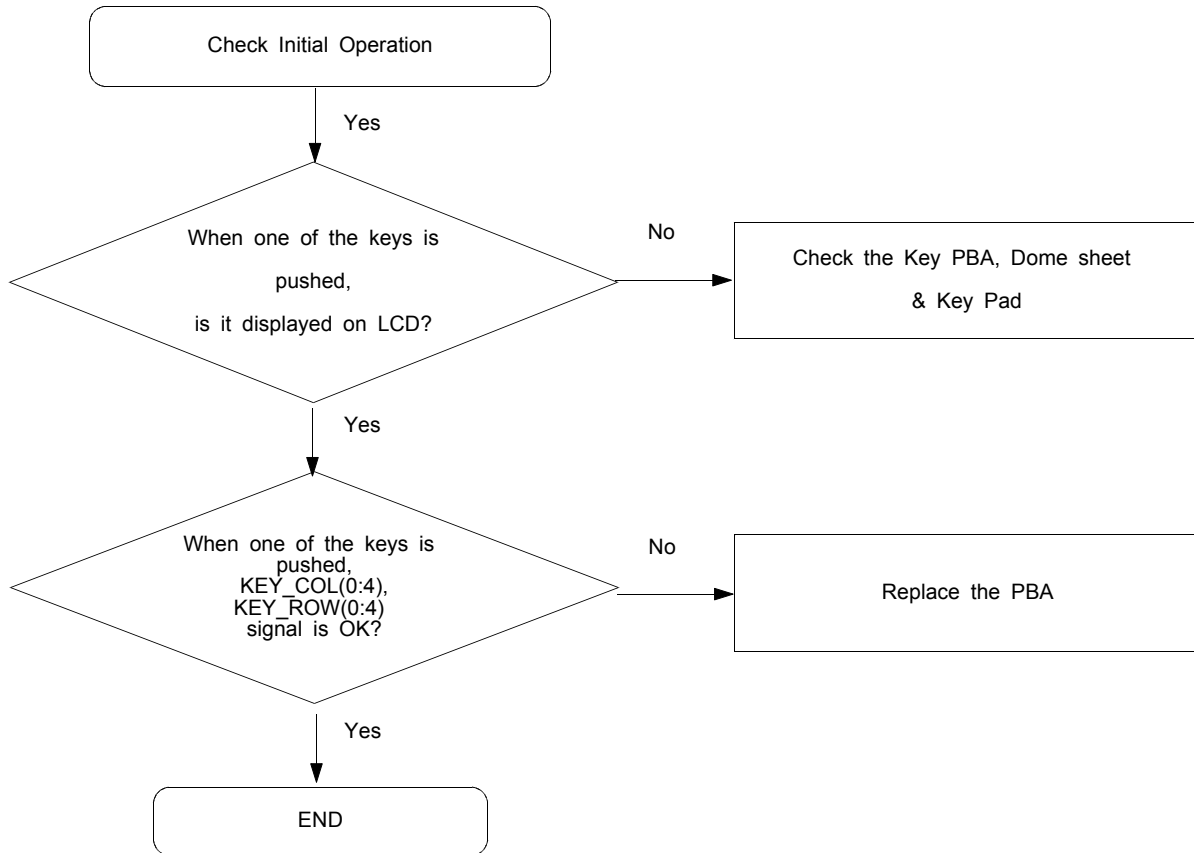


### 9-6. Speaker Part(Melody)



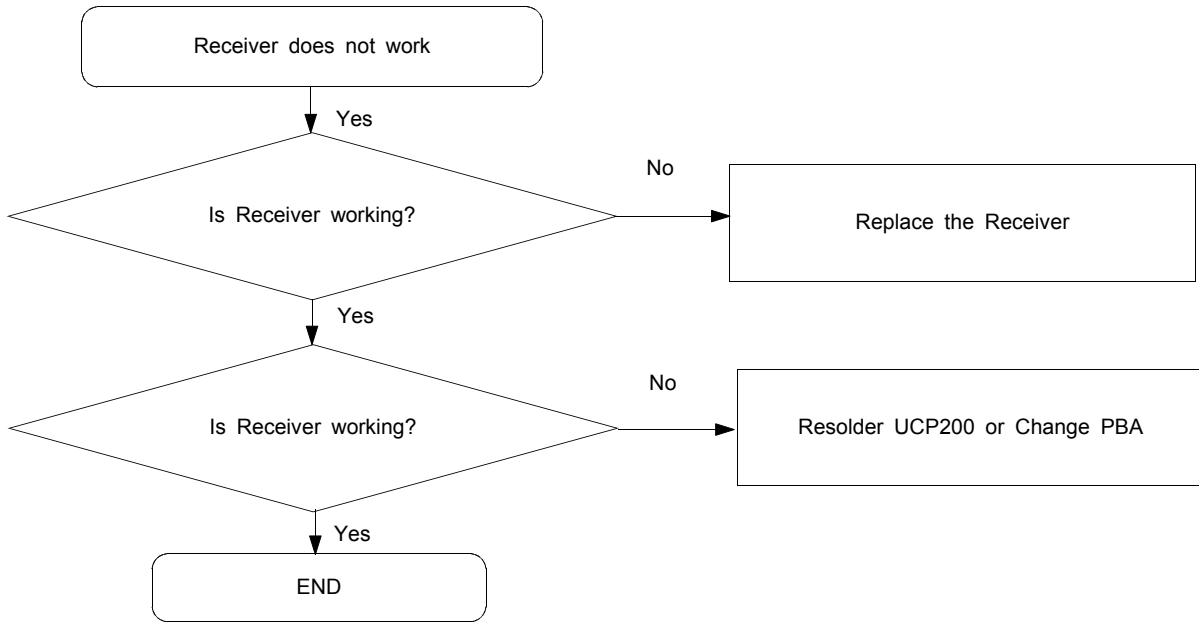


## 9-7. Key Data Input

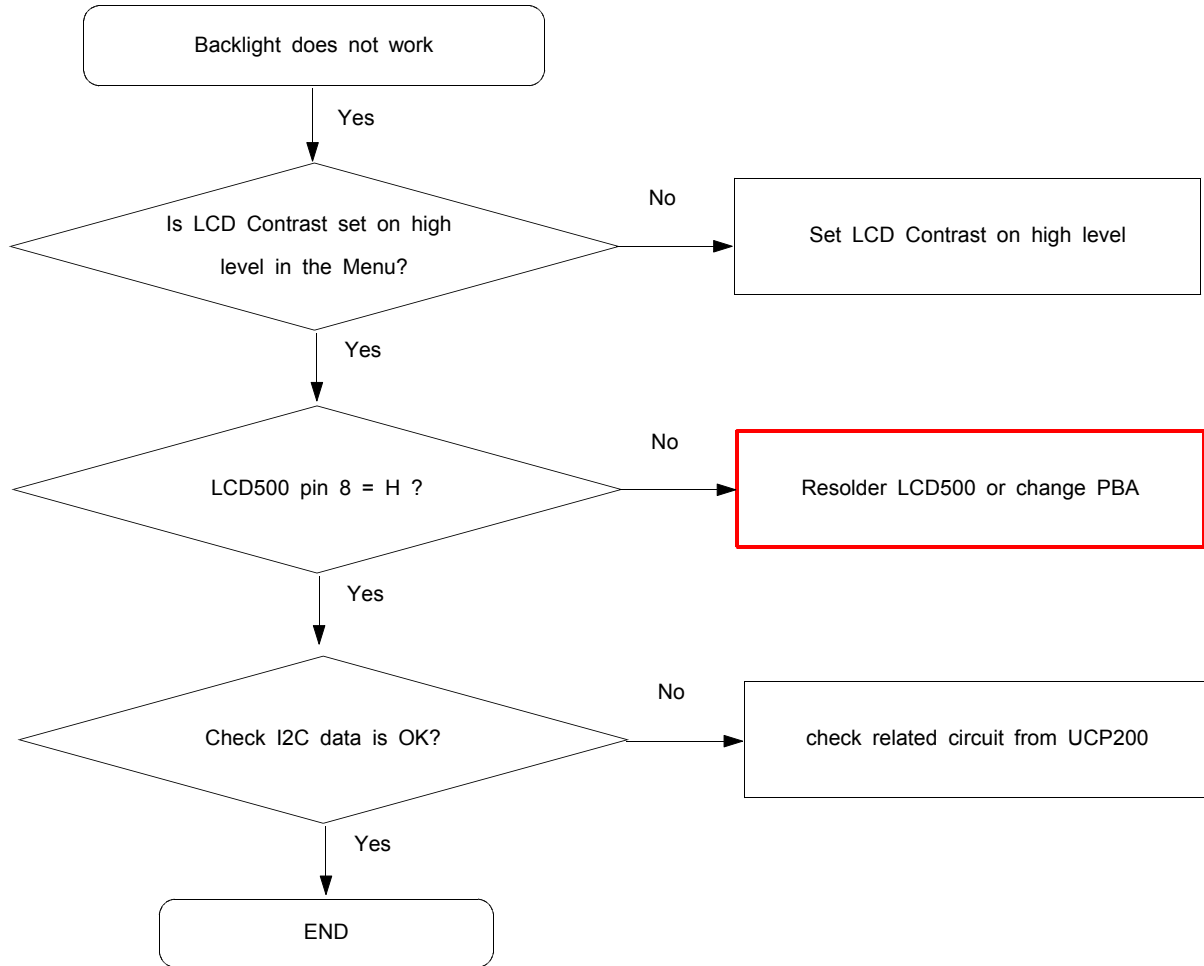




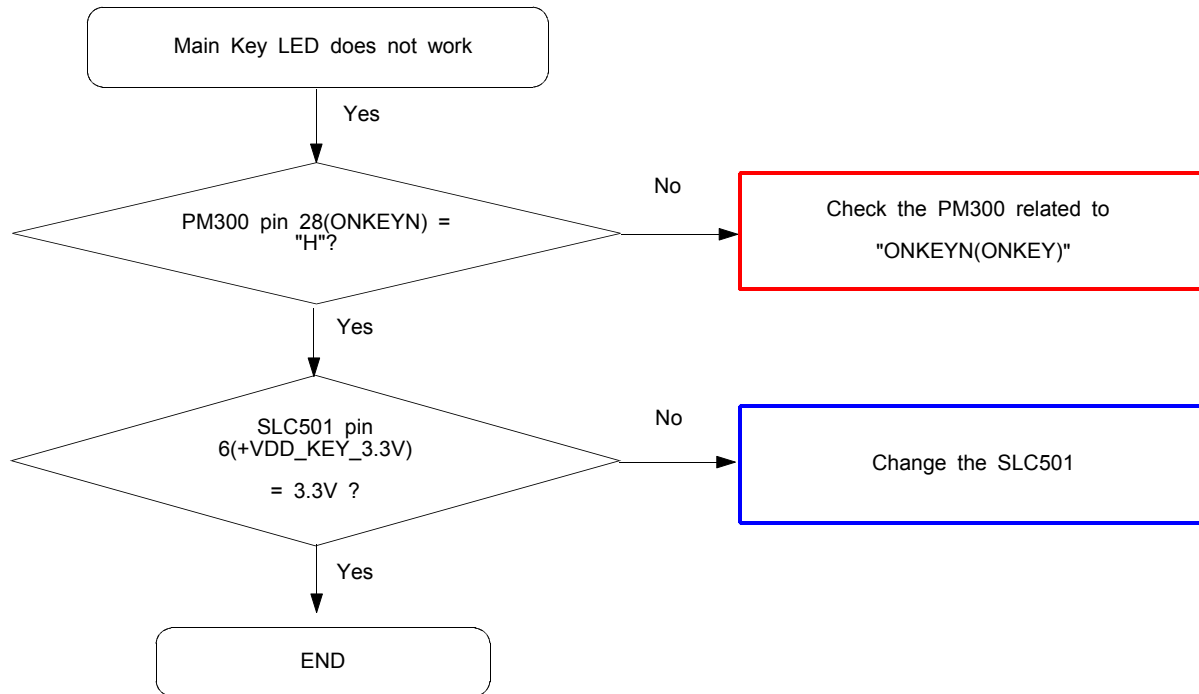
### 9-8. Receiver Part



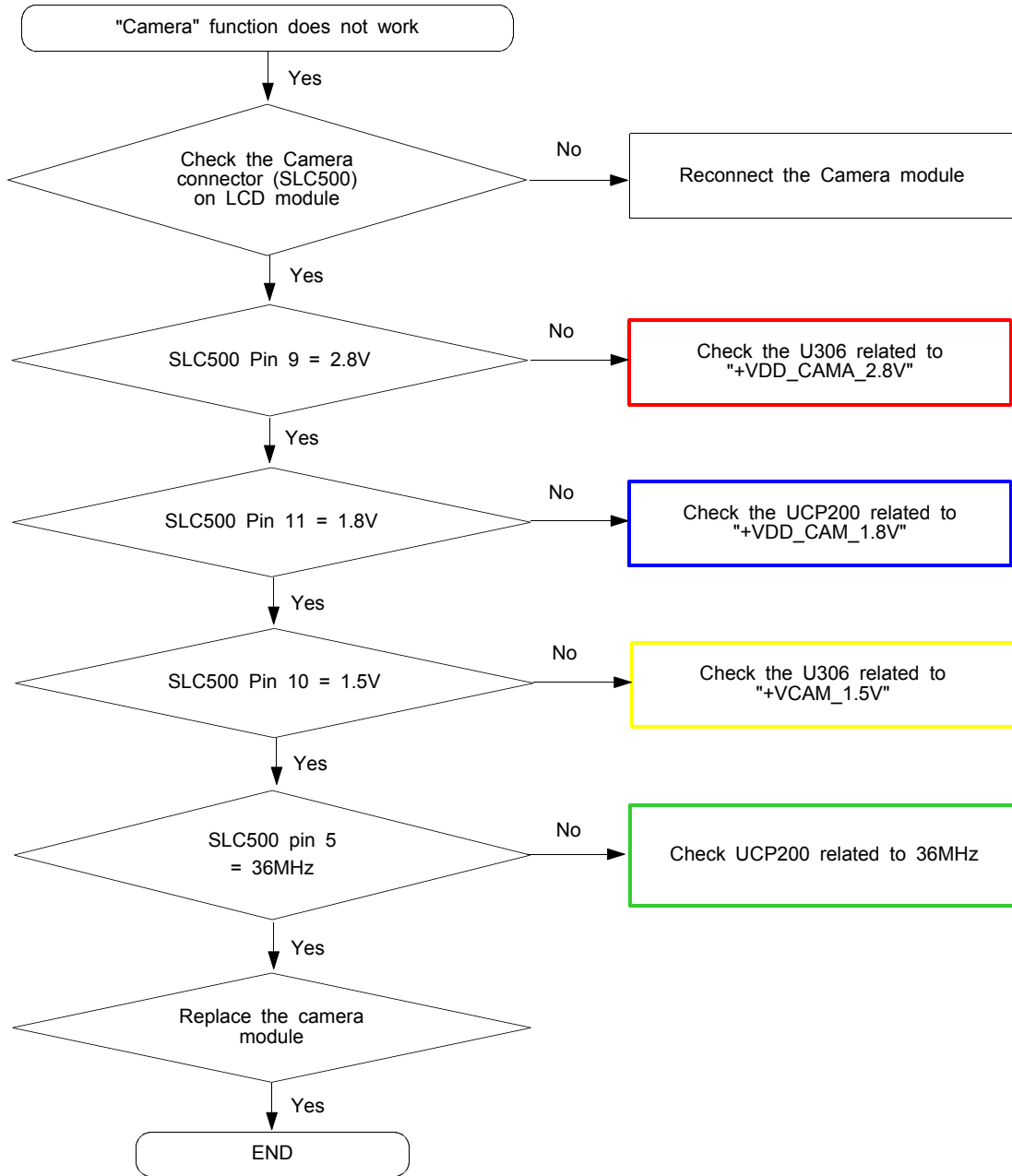
### 9-9. Back Light (for Color Main LCD)

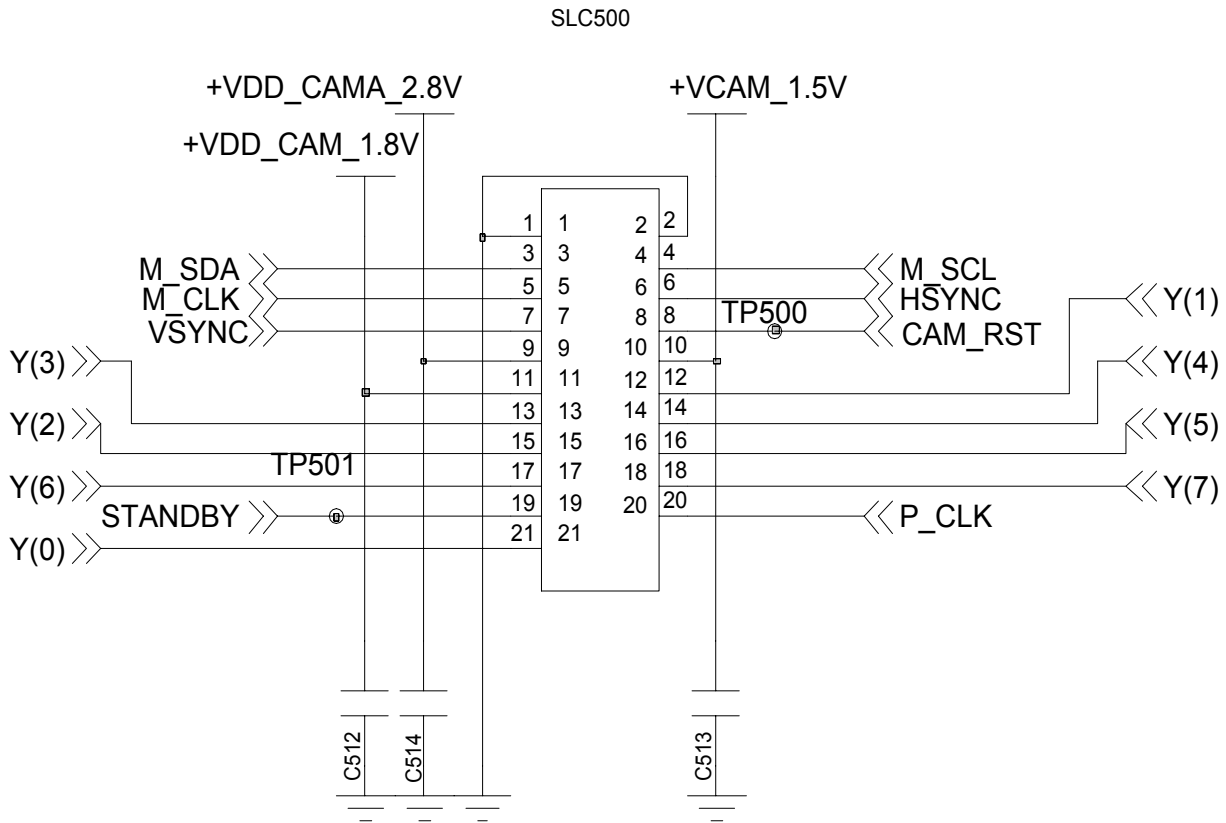


## 9-10. Key Back Light



### 9-11. Camera part

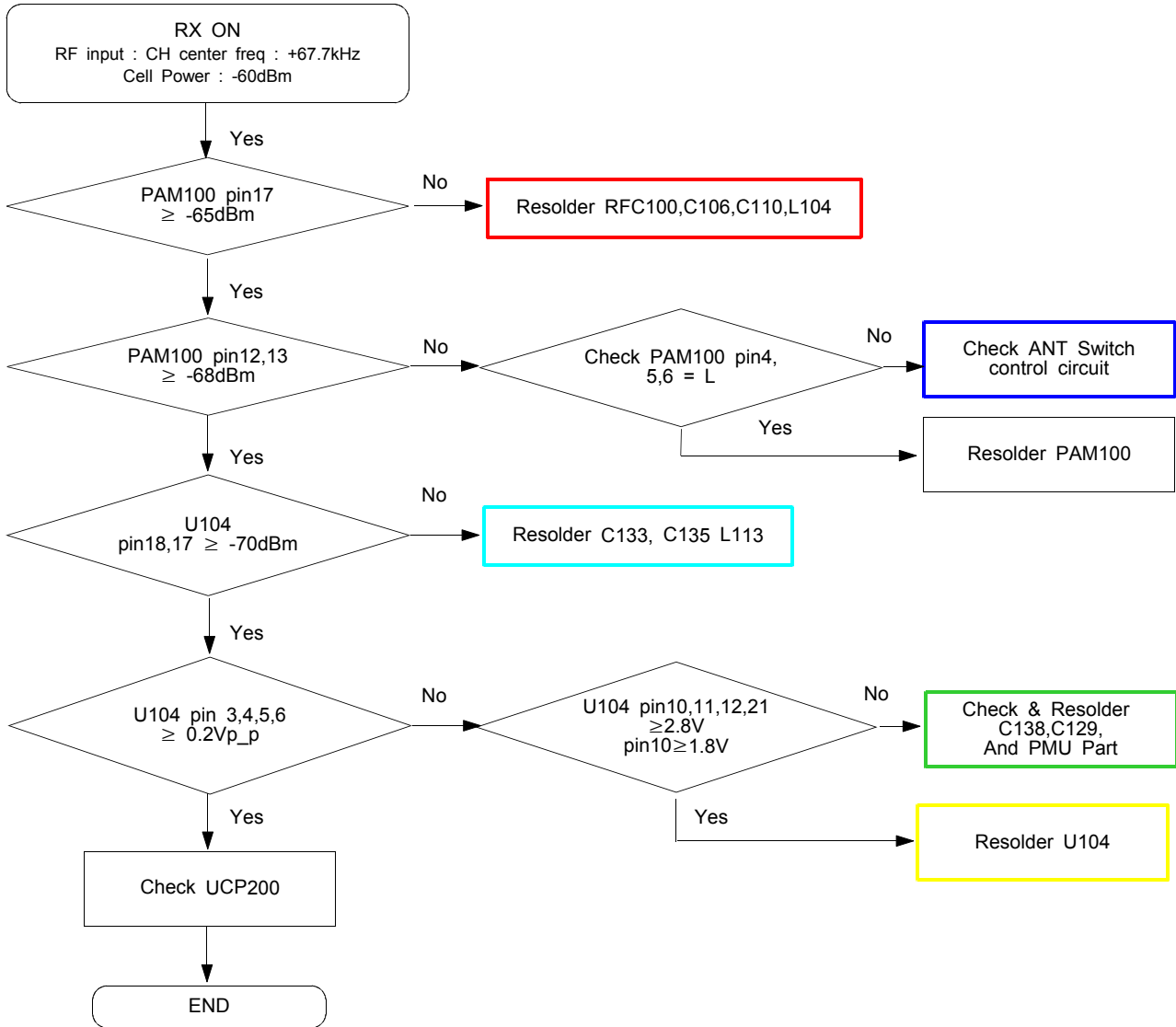




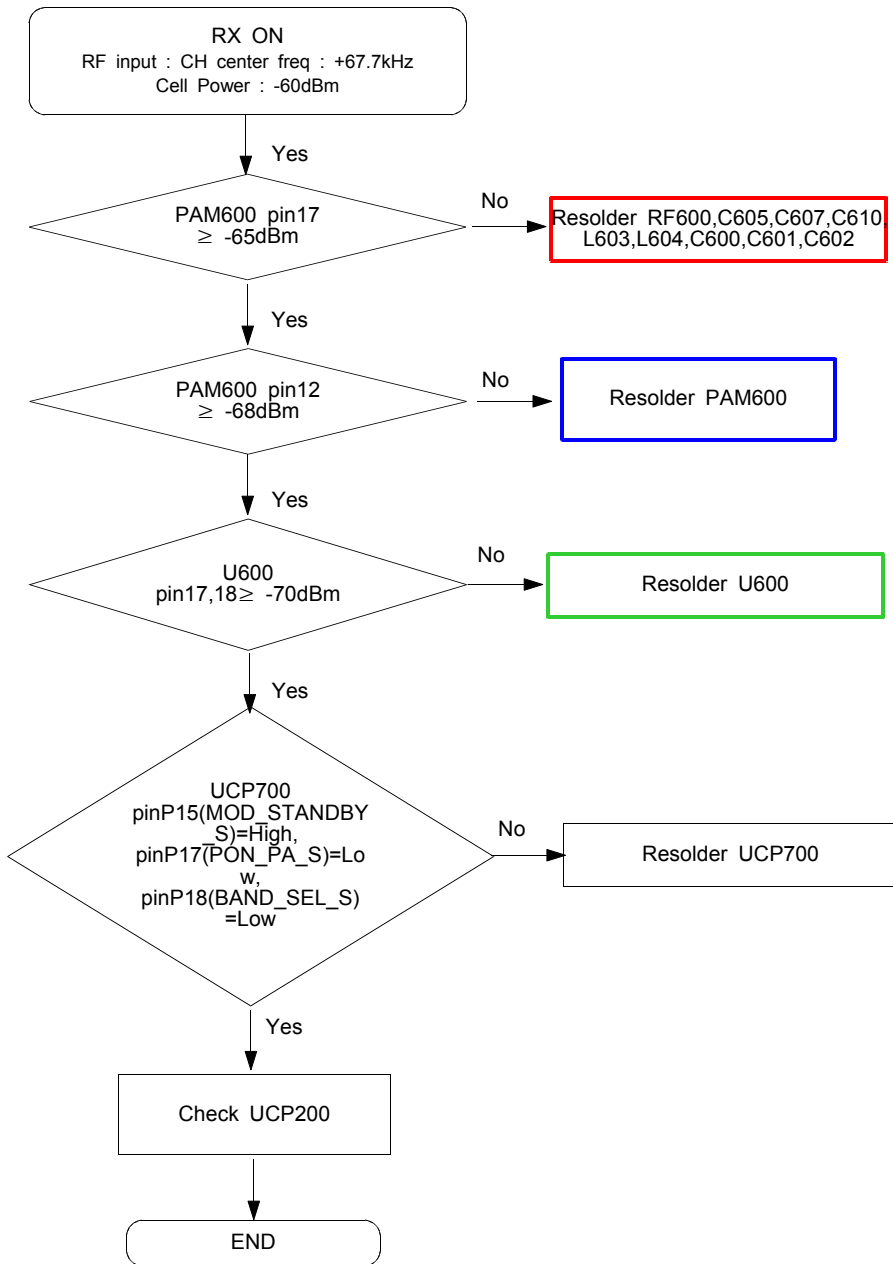
# CAM CONNECTOR

## 9-12. GSM Receiver

### 1) Master

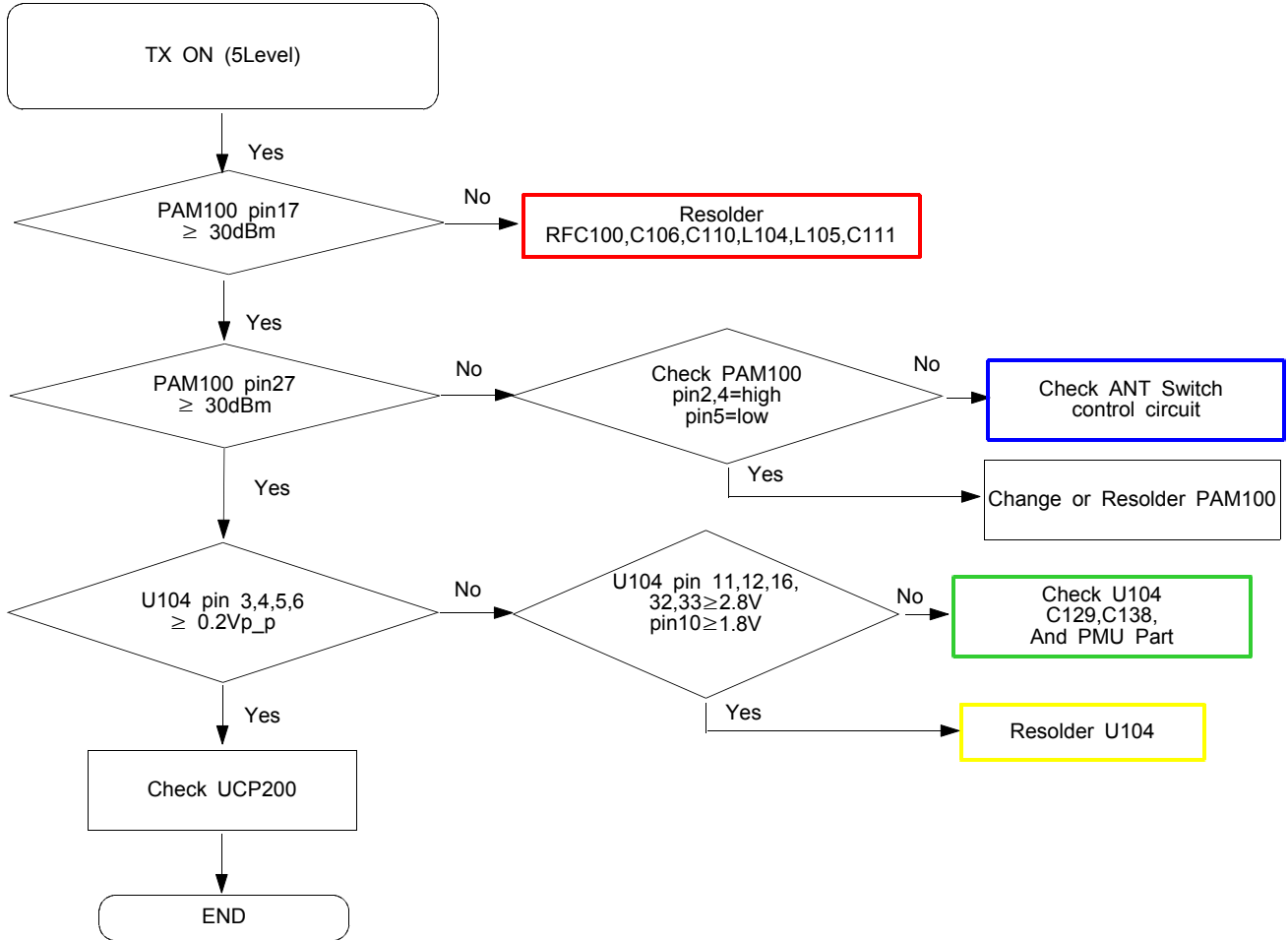


## 2)Slave



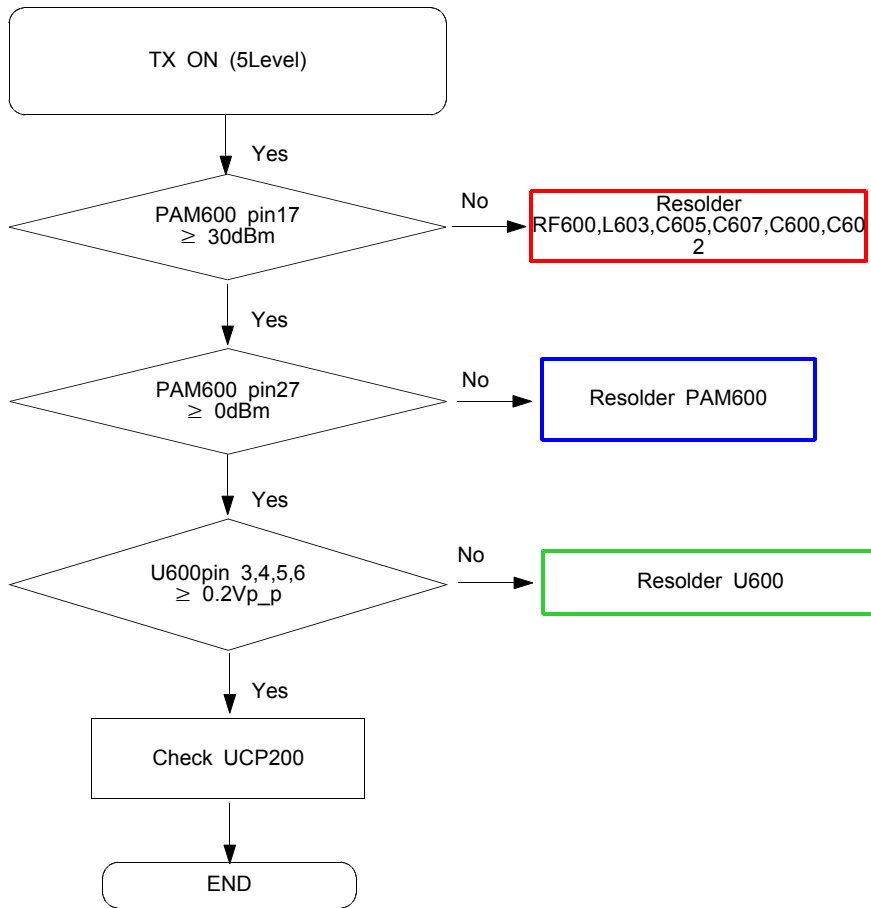
### 9-13. GSM Transmitter

#### 1) Master



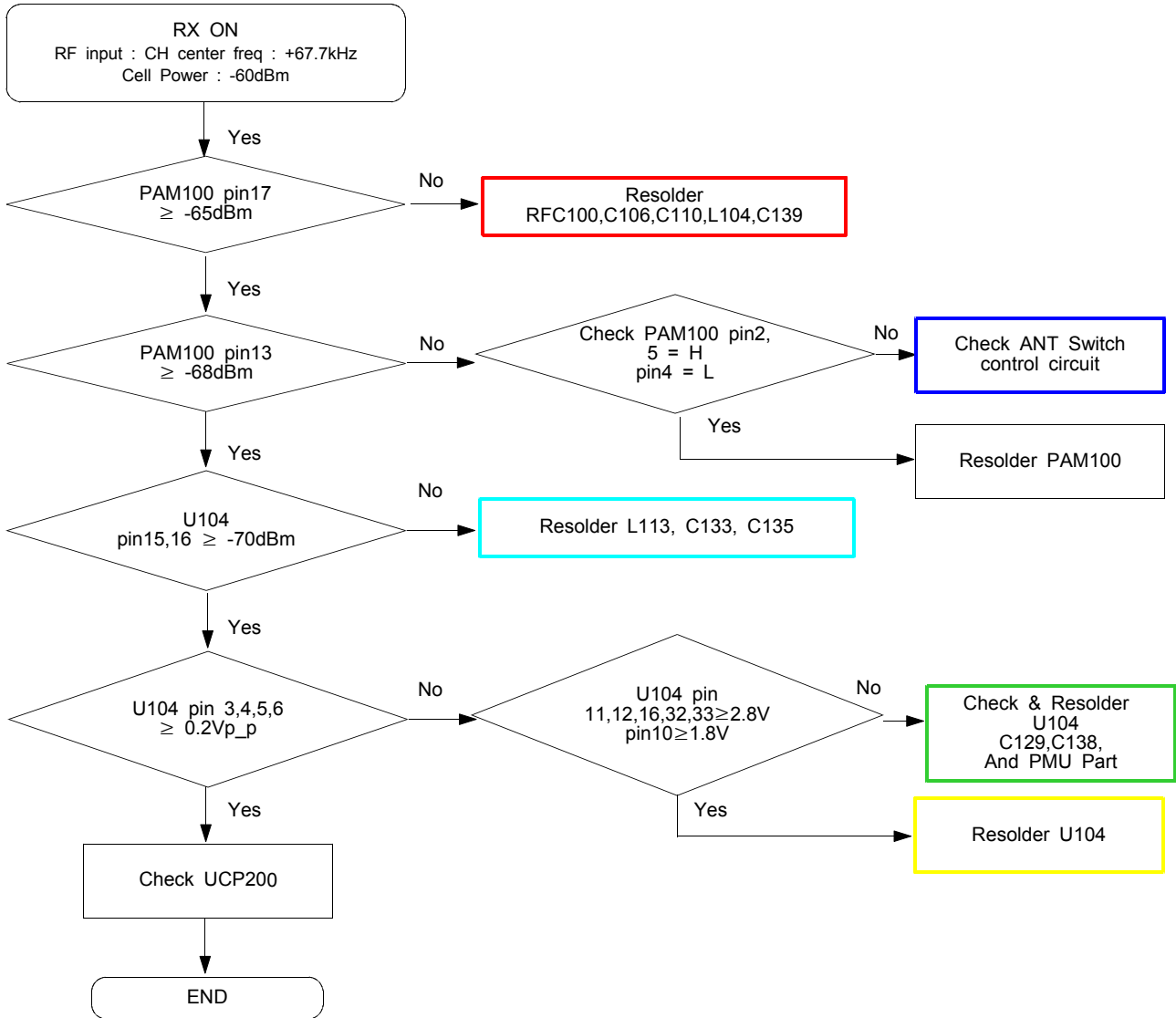


2)Slave

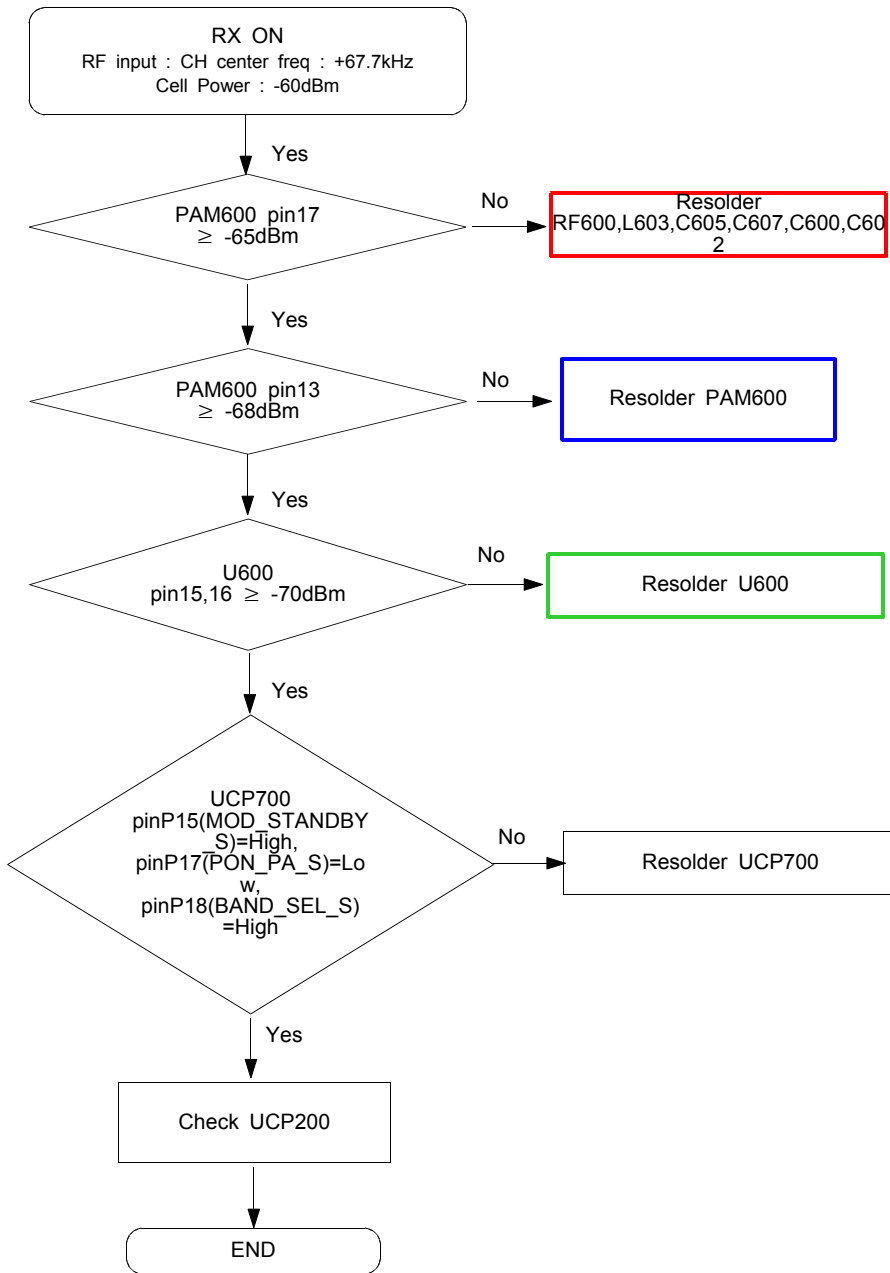


### 9-14. DCS Receiver

#### 1) Master

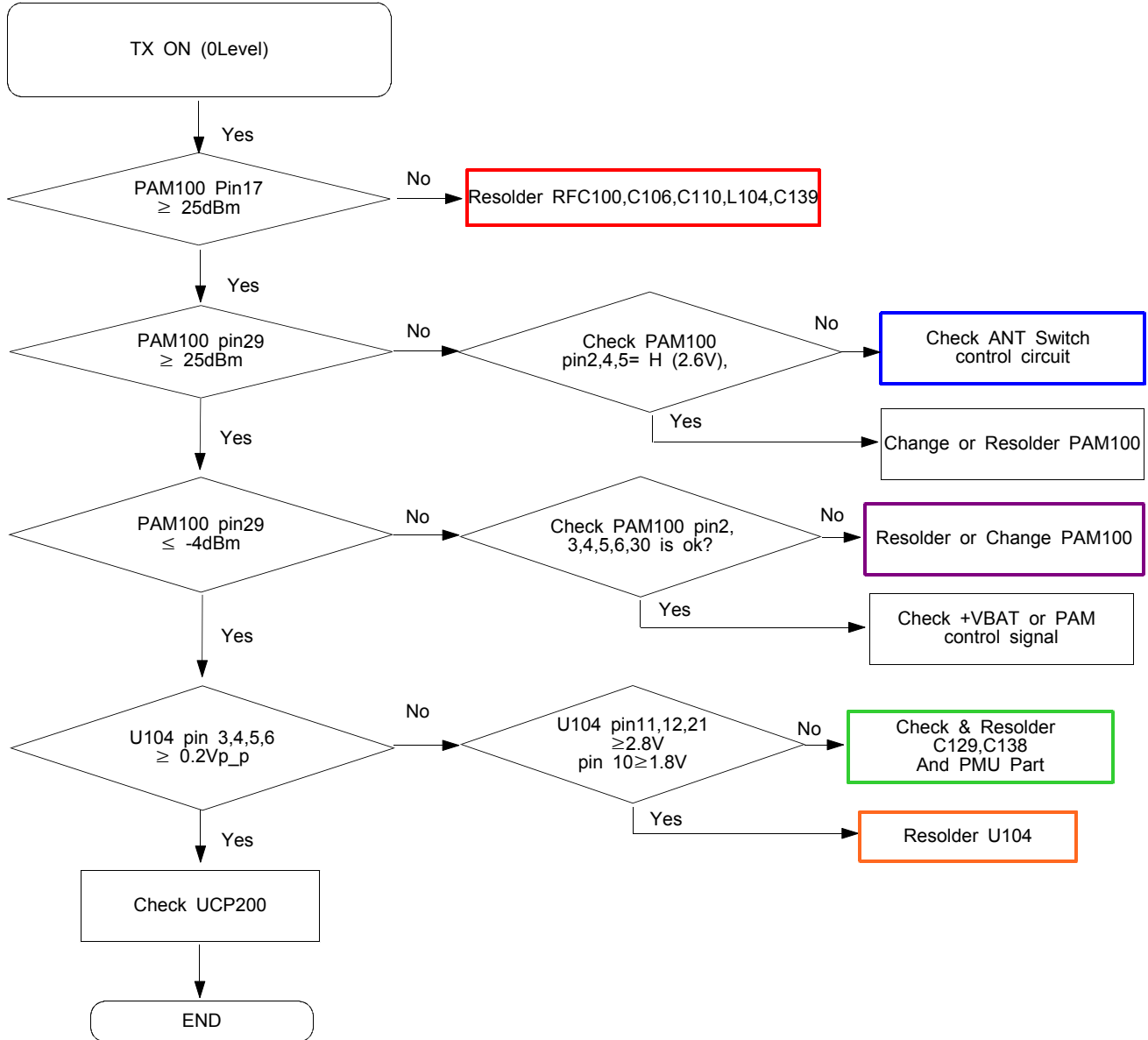


## 2)Slave

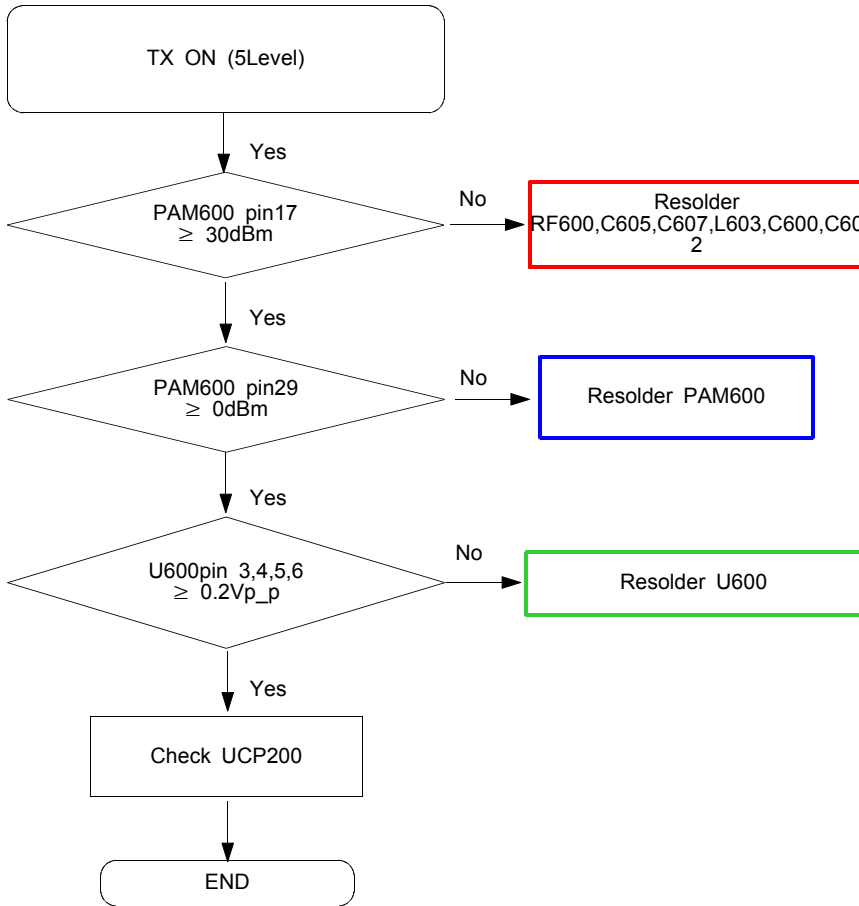


### 9-15. DCS Transmitter

#### 1) Master



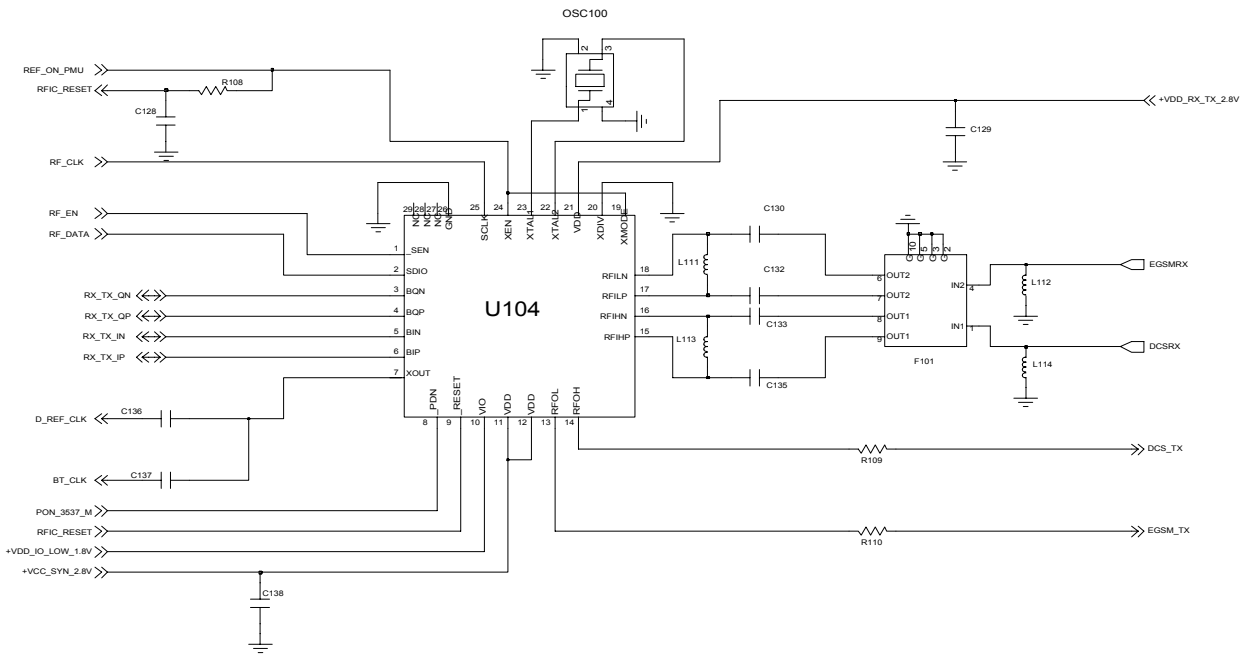
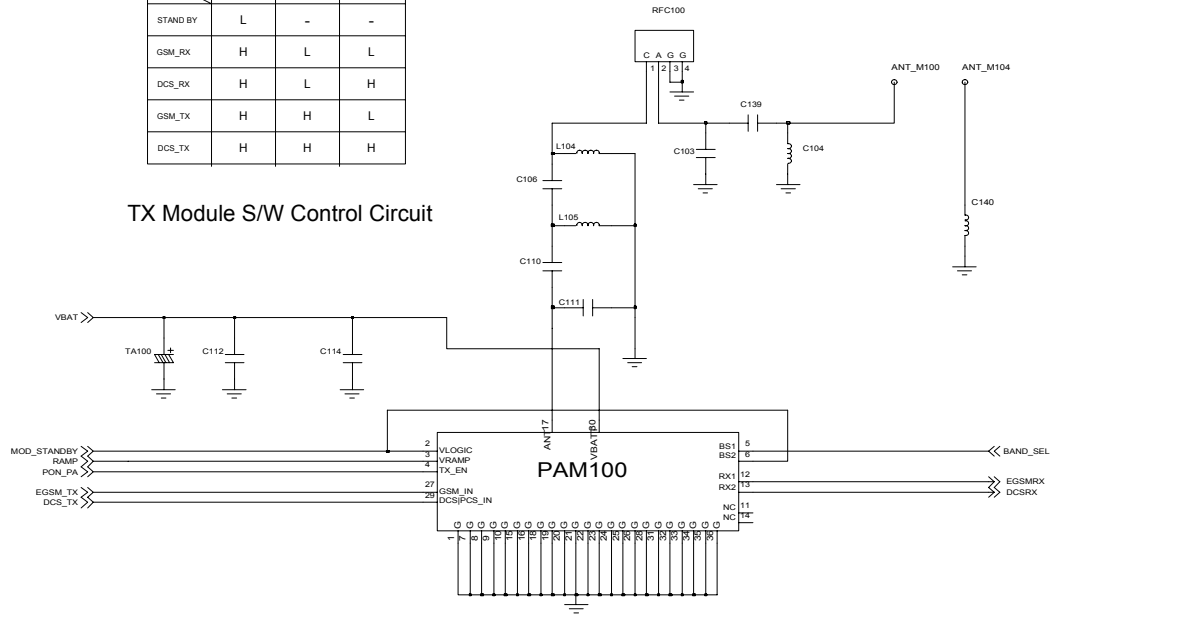
2)Slave

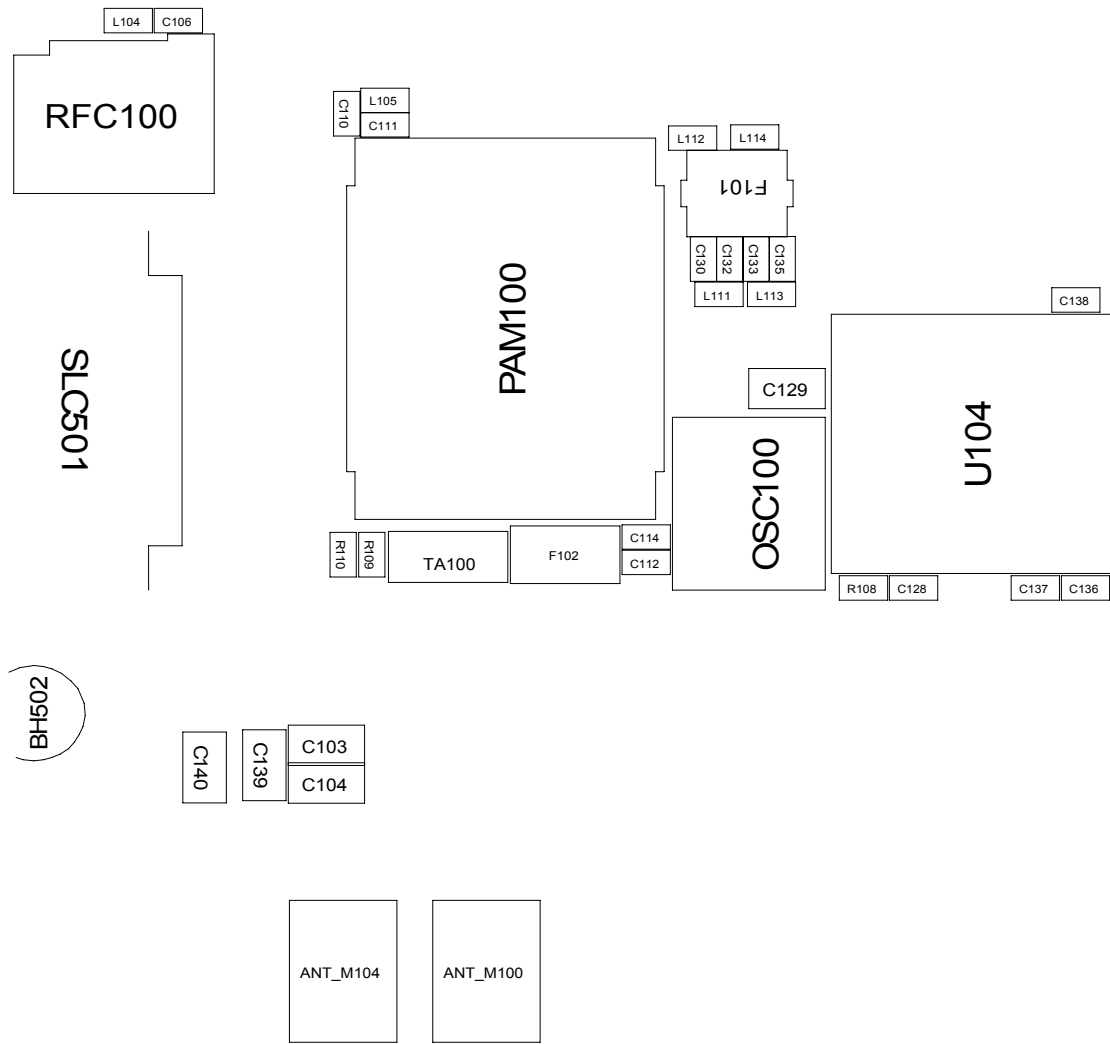


[Master] Rx, Tx

	MOD_STANDBY	PON_PA	BAND_SEL
STAND BY	L	-	-
GSM_RX	H	L	L
DCS_RX	H	L	H
GSM_TX	H	H	L
DCS_TX	H	H	H

TX Module S/W Control Circuit

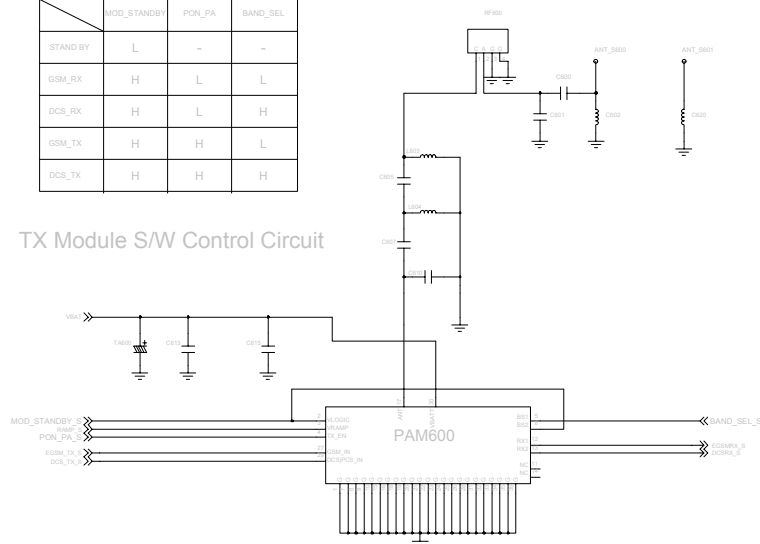




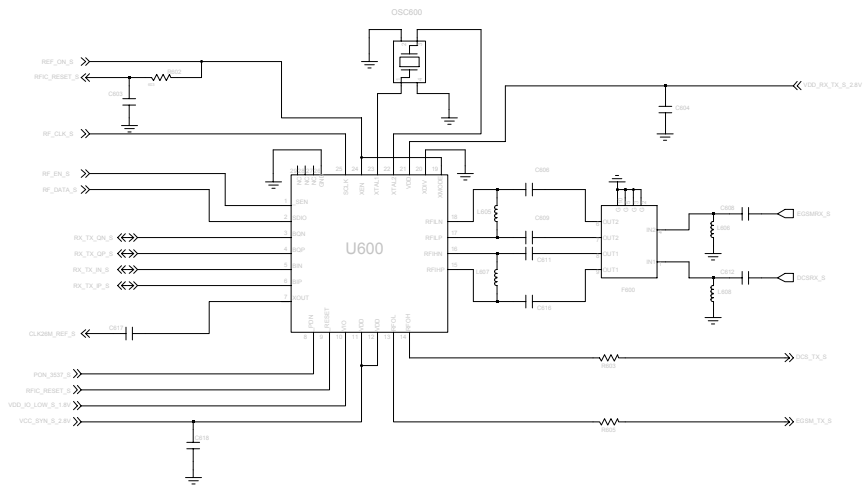
[Slave] Rx, Tx

	MOD_STANDBY	POW_PA	BAND_SEL
STAND BY	L	-	-
GSM_RX	H	L	L
DCS_RX	H	L	H
GSM_TX	H	H	L
DCS_TX	H	H	H

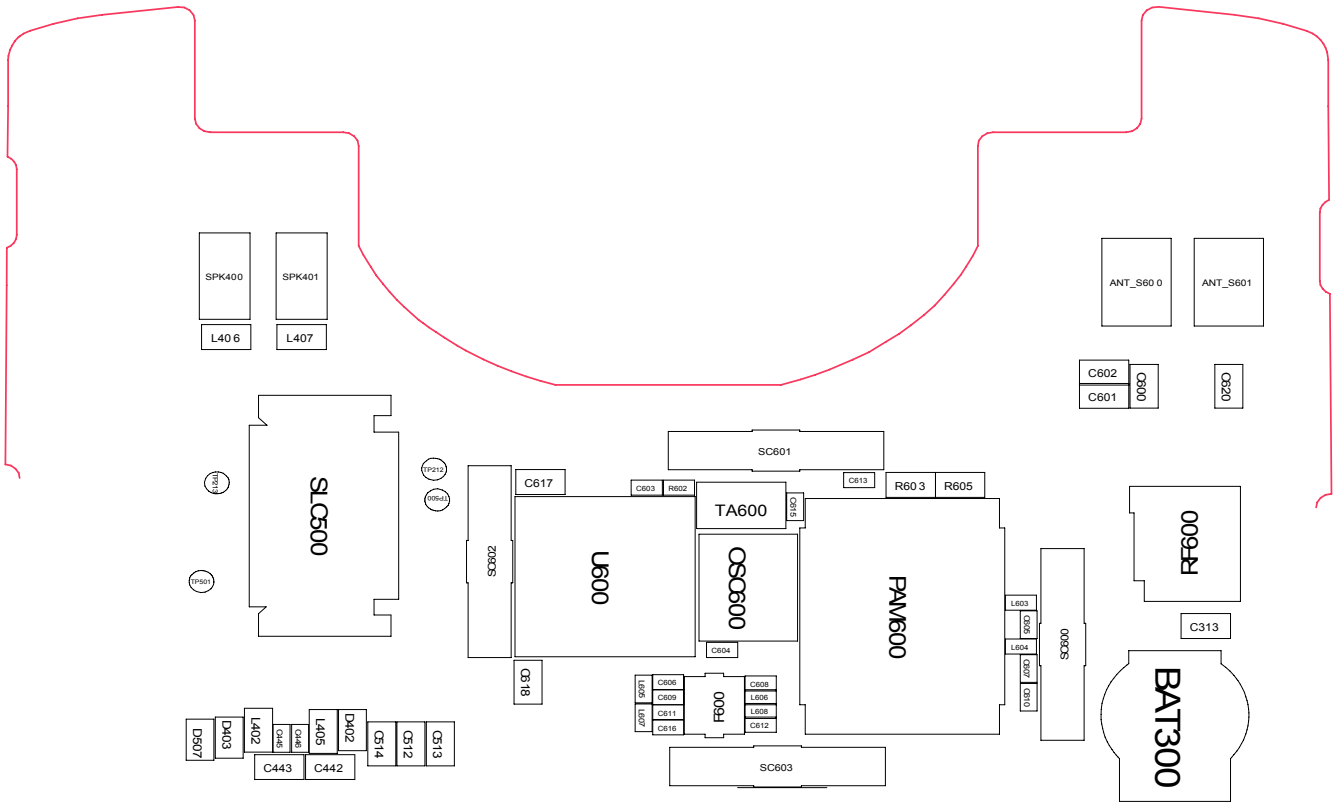
TX Module S/W Control Circuit



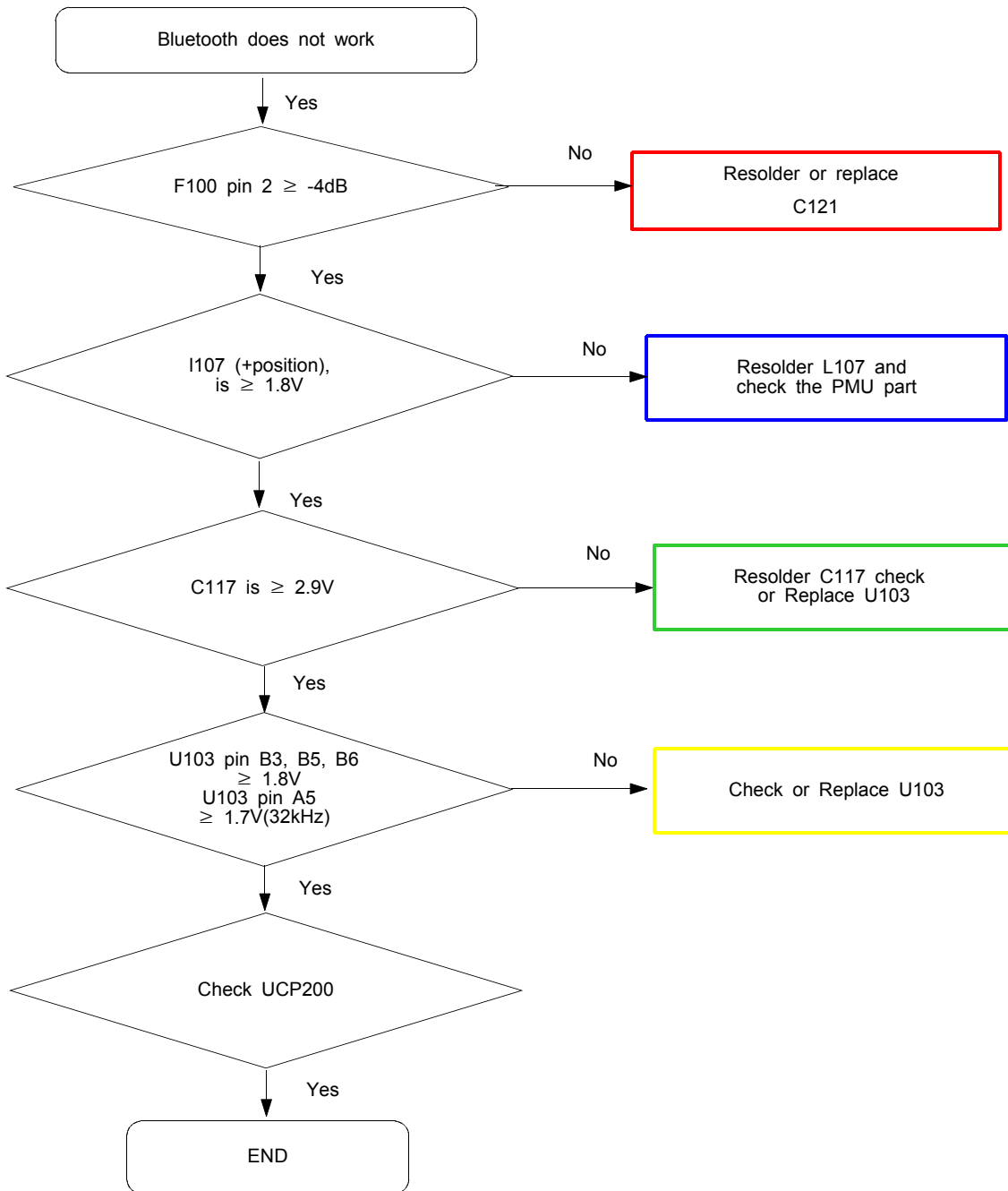
TX Module S/W Control Circuit

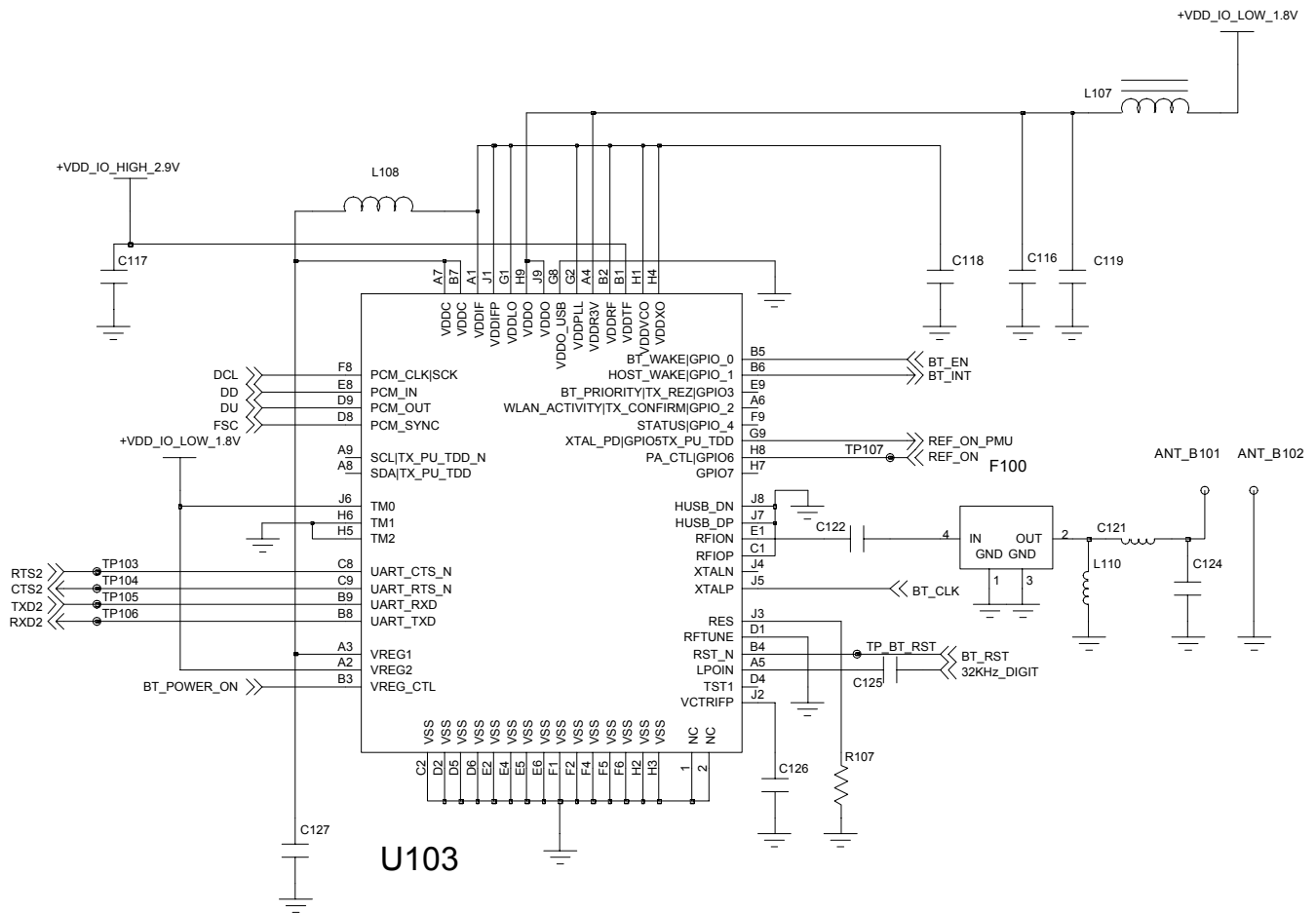




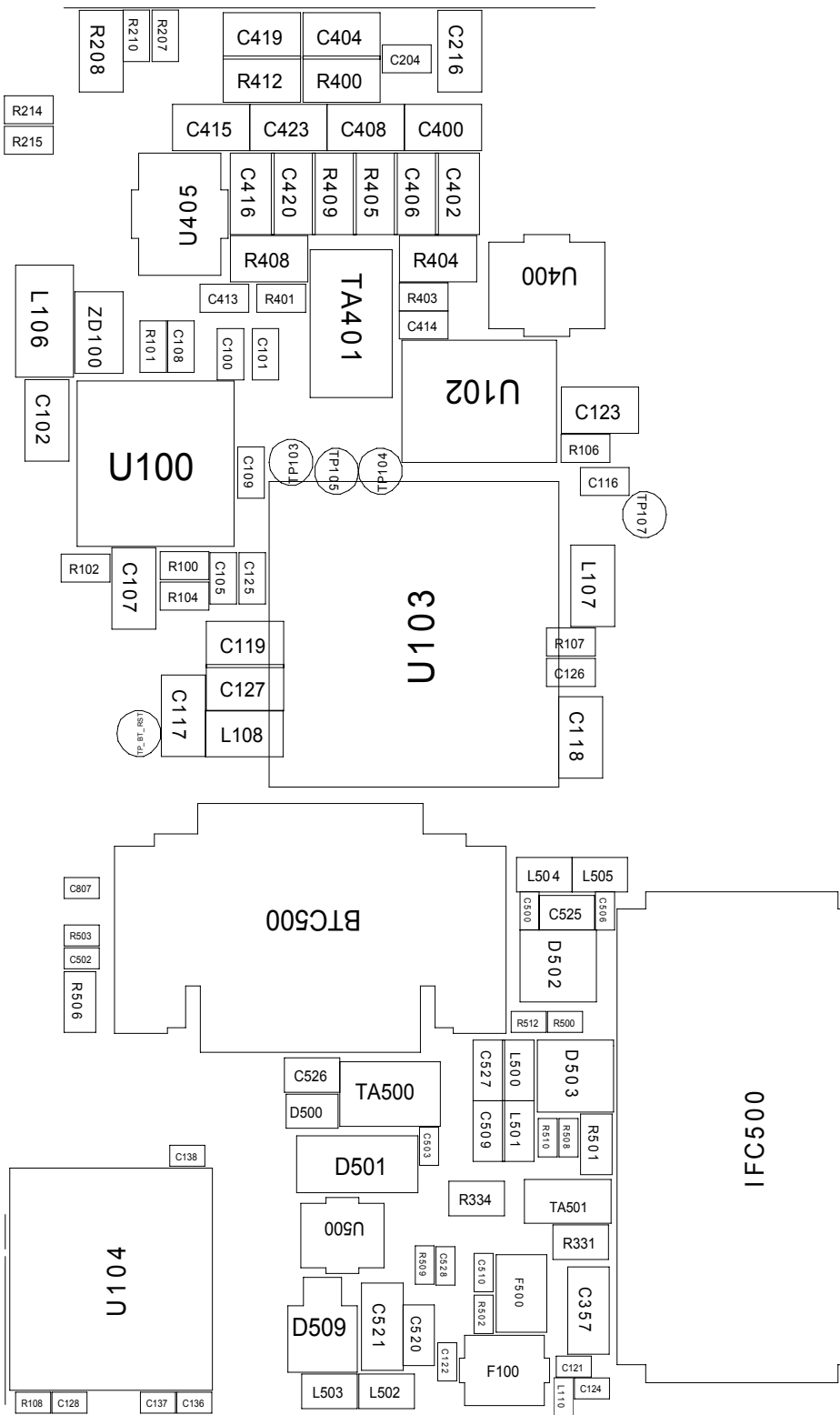


### 9-18. Bluetooth part

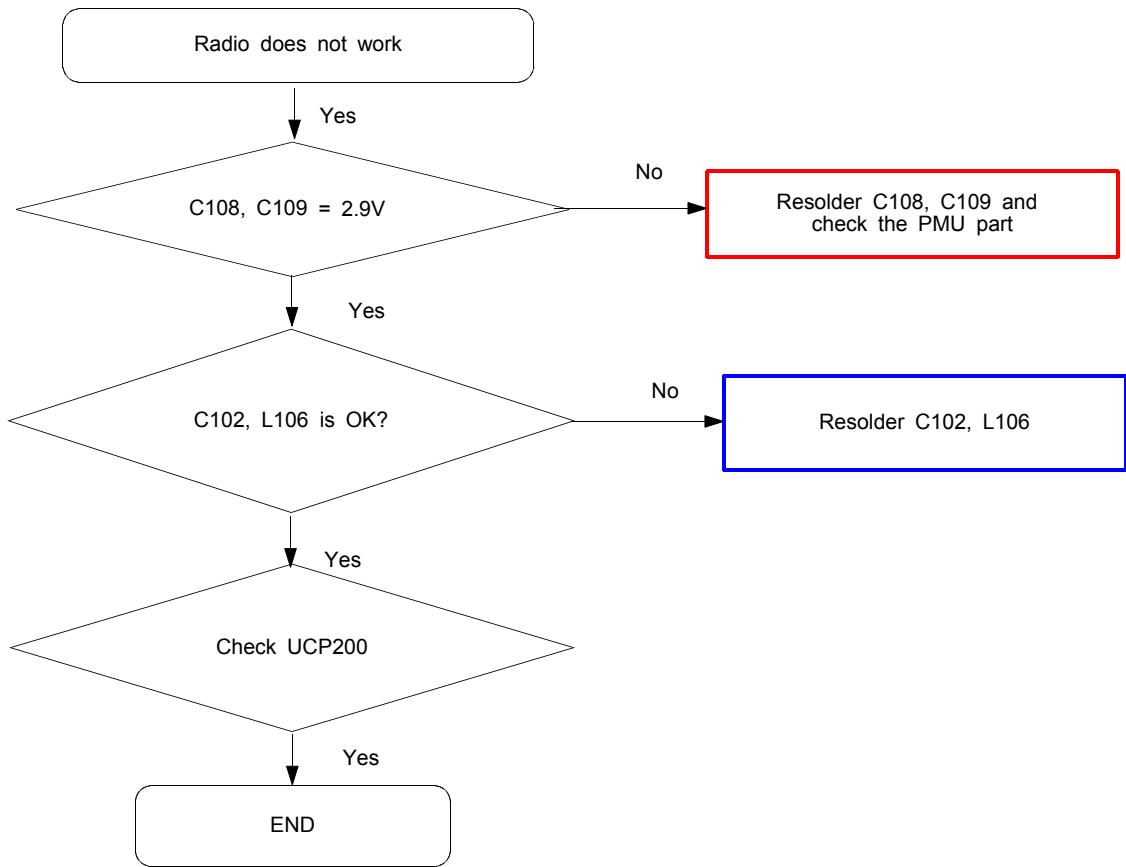


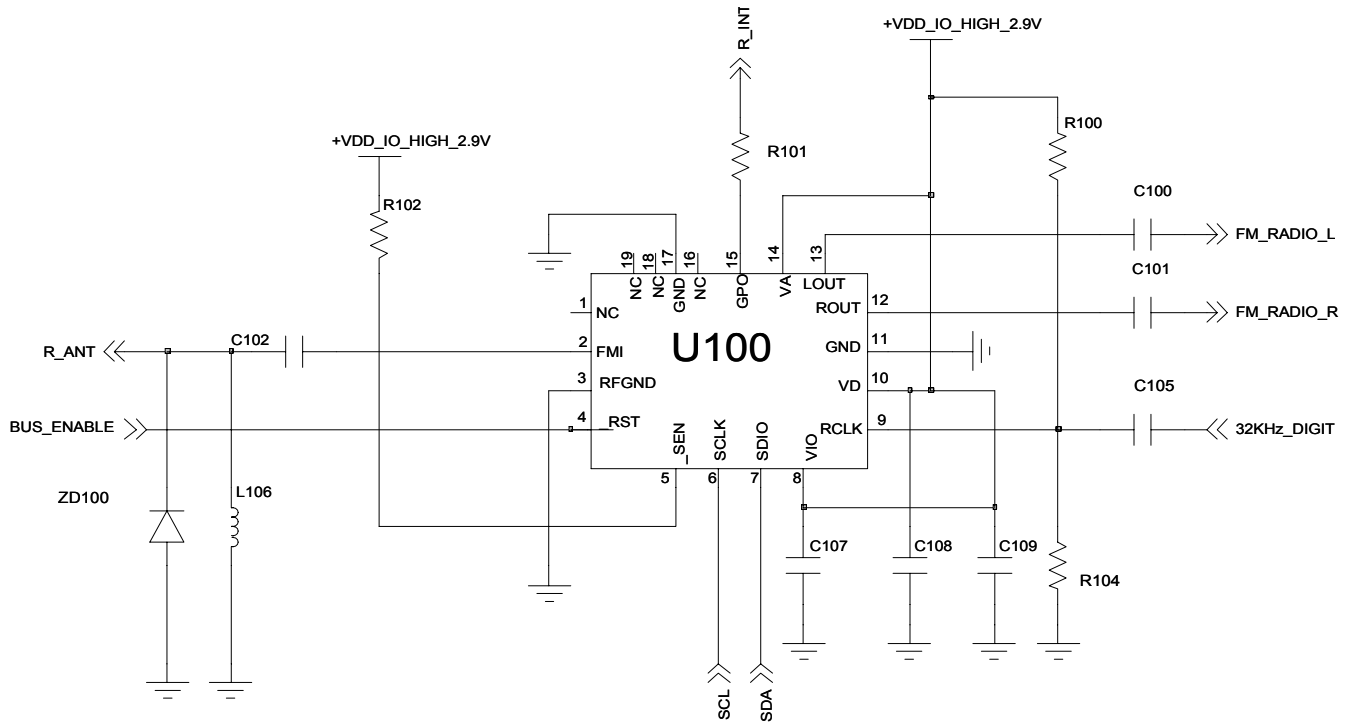


# BLUE TOOTH

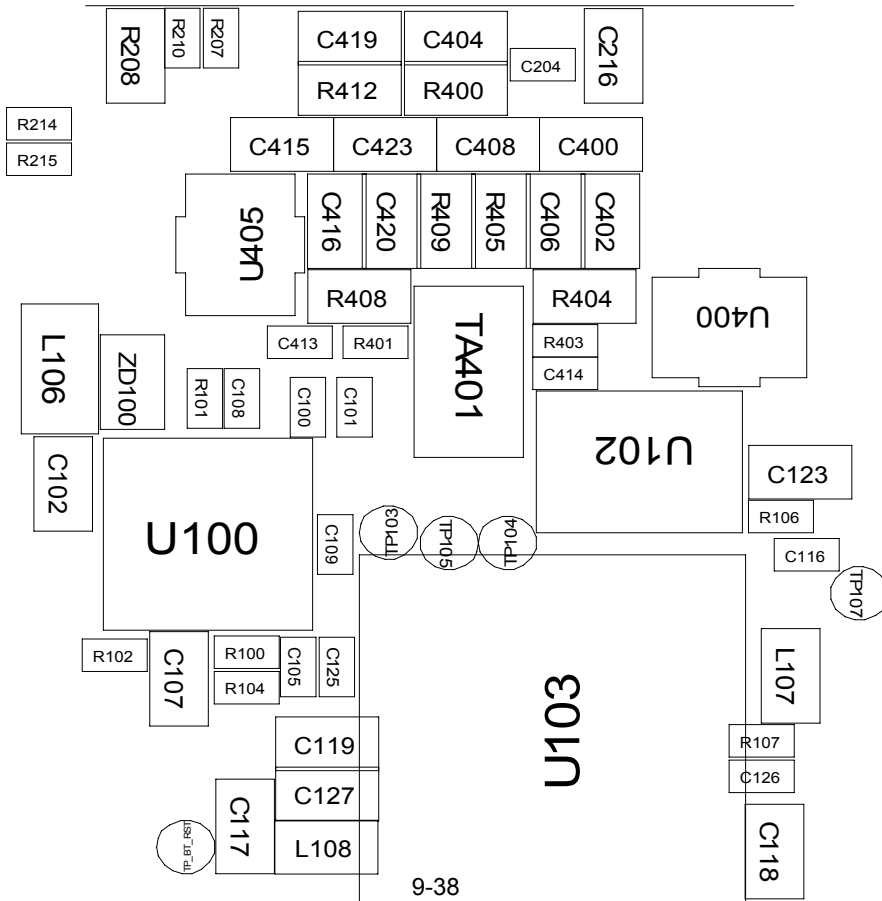


9-19. FM Radio part





## FM RADIO

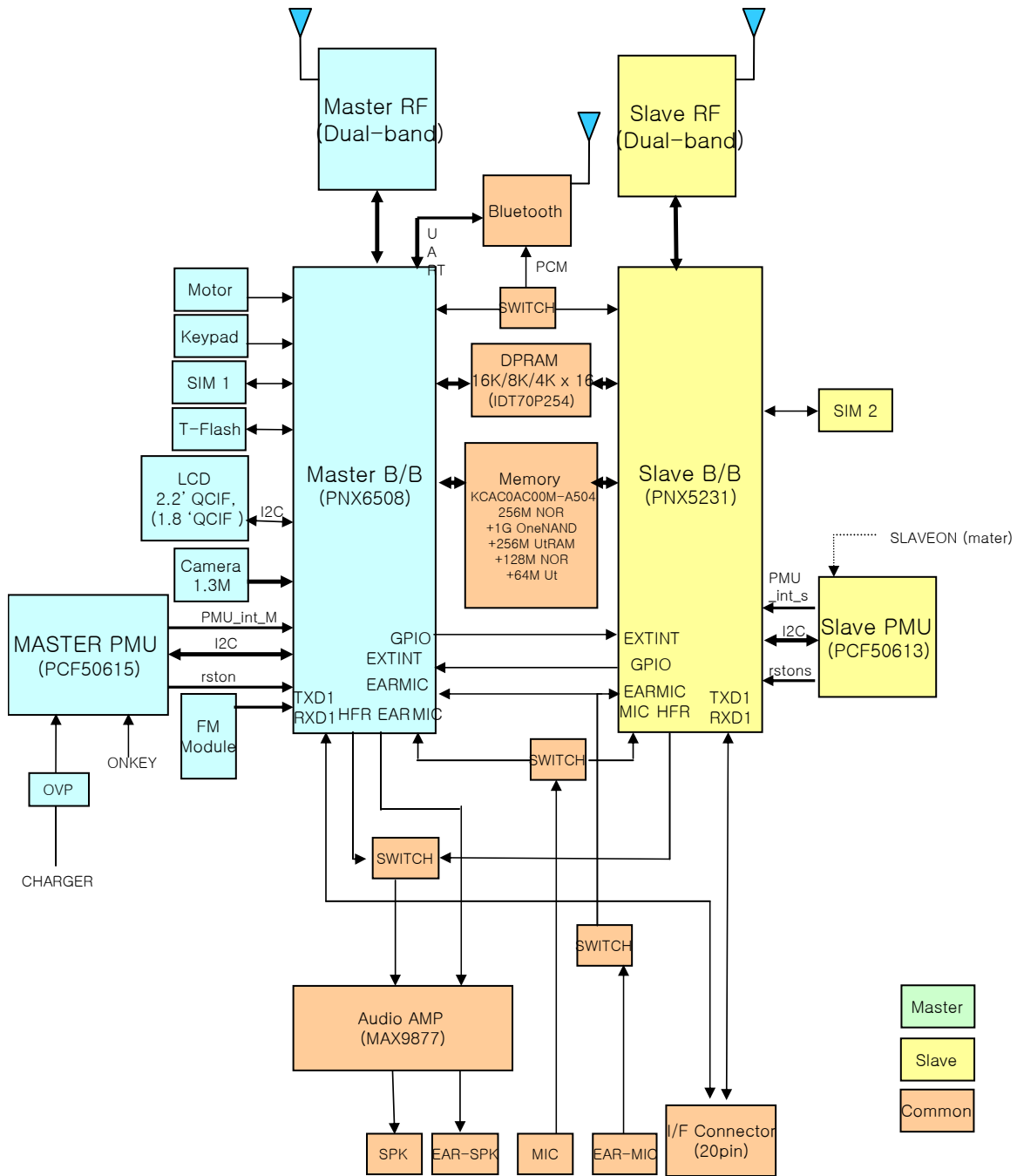


9-38

# 7. Block Diagrams

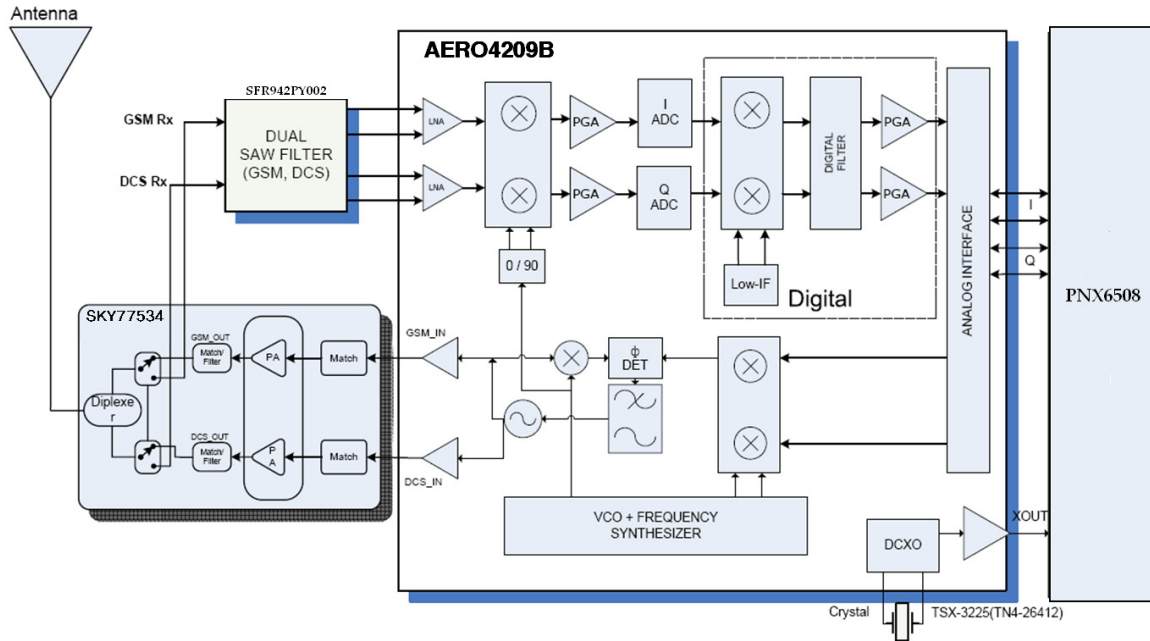
## 7-1. Functional Block Diagram

### 1. SYSTEM

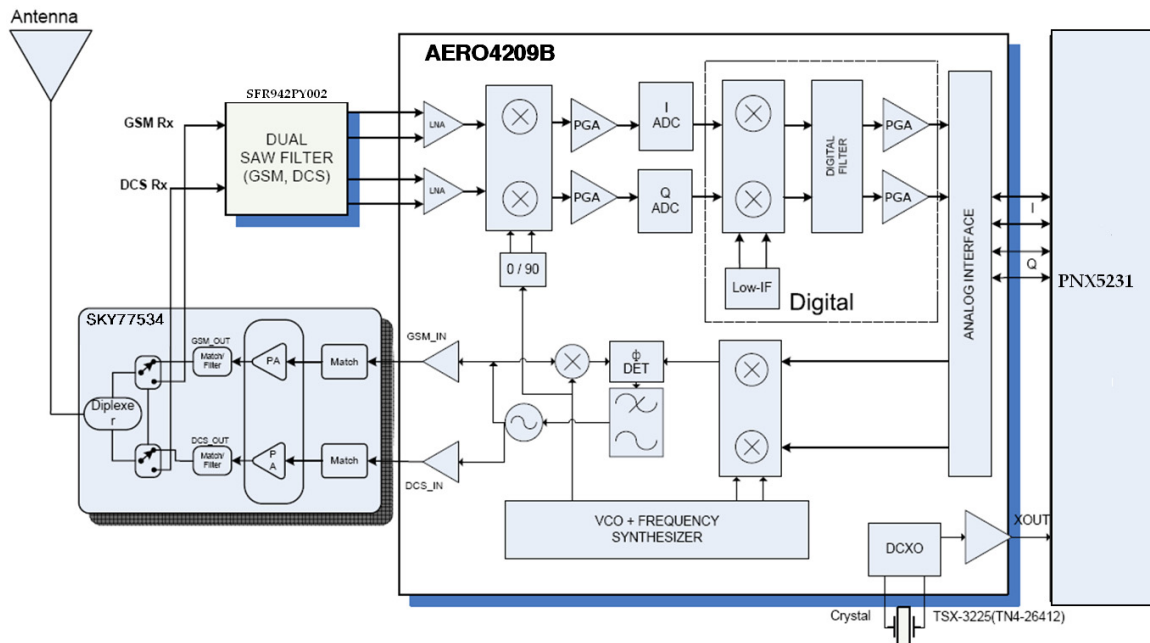


## 7-2. RF Solution Block Diagram

### 7-2-1. MASTER



### 7-2-2. SLAVE



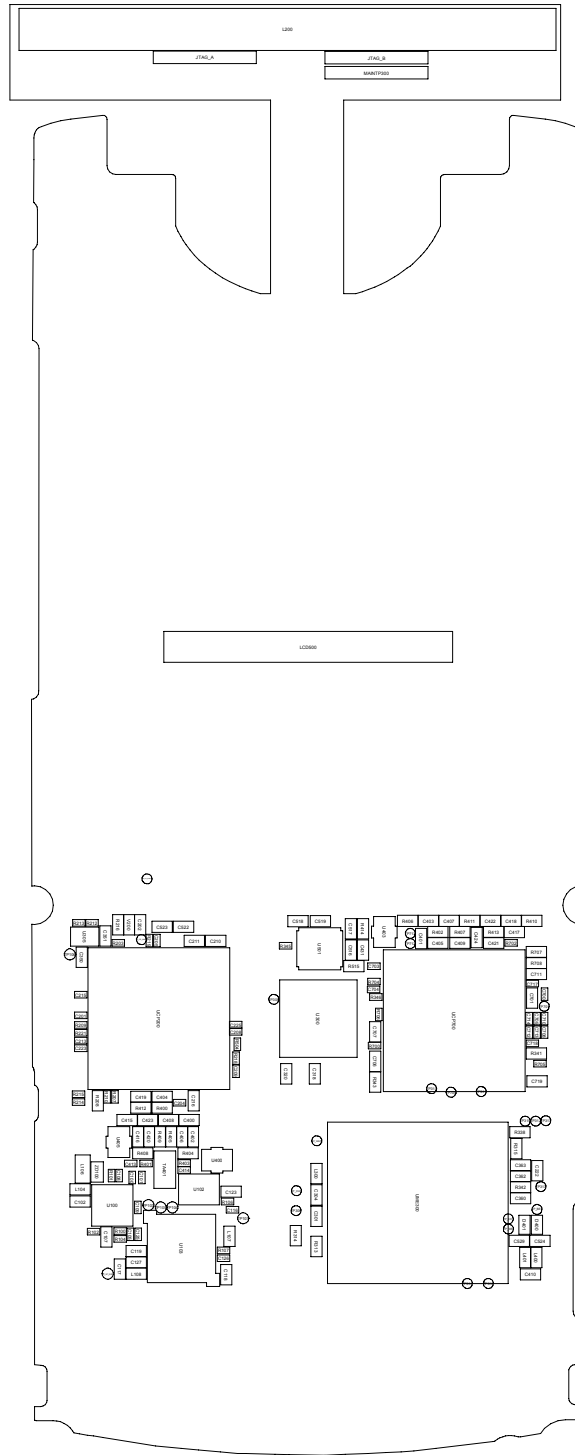


---

## 8. PCB Diagrams

---

– Main top view



– Main bottom view

