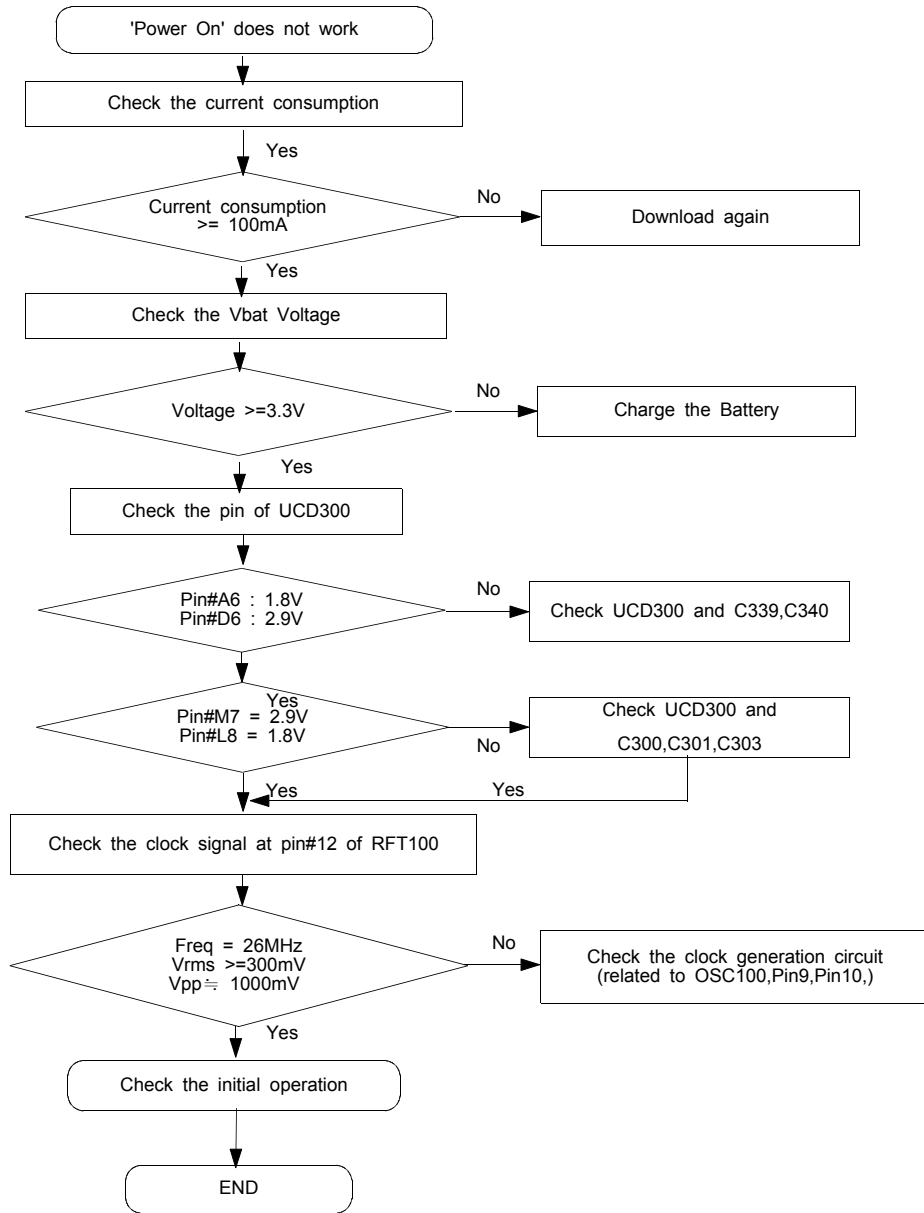
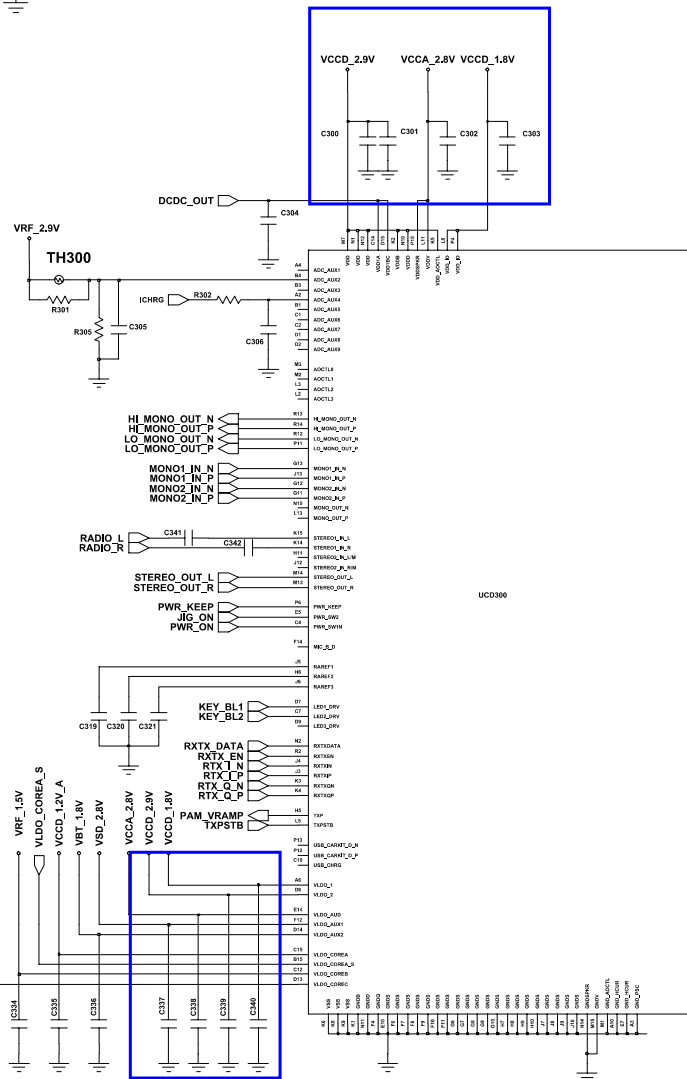
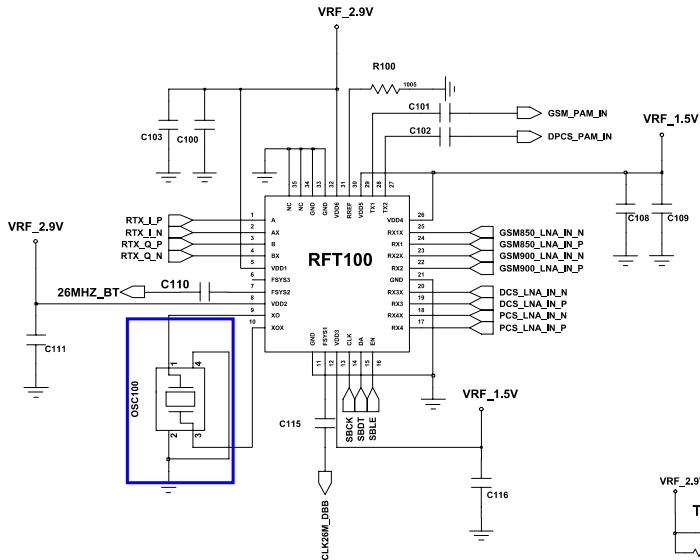
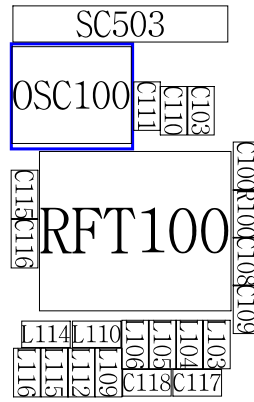
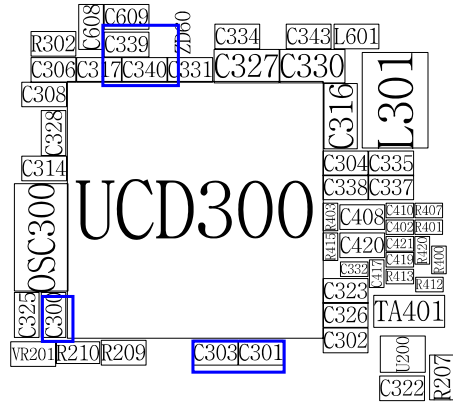


9. Flow Chart of Troubleshooting

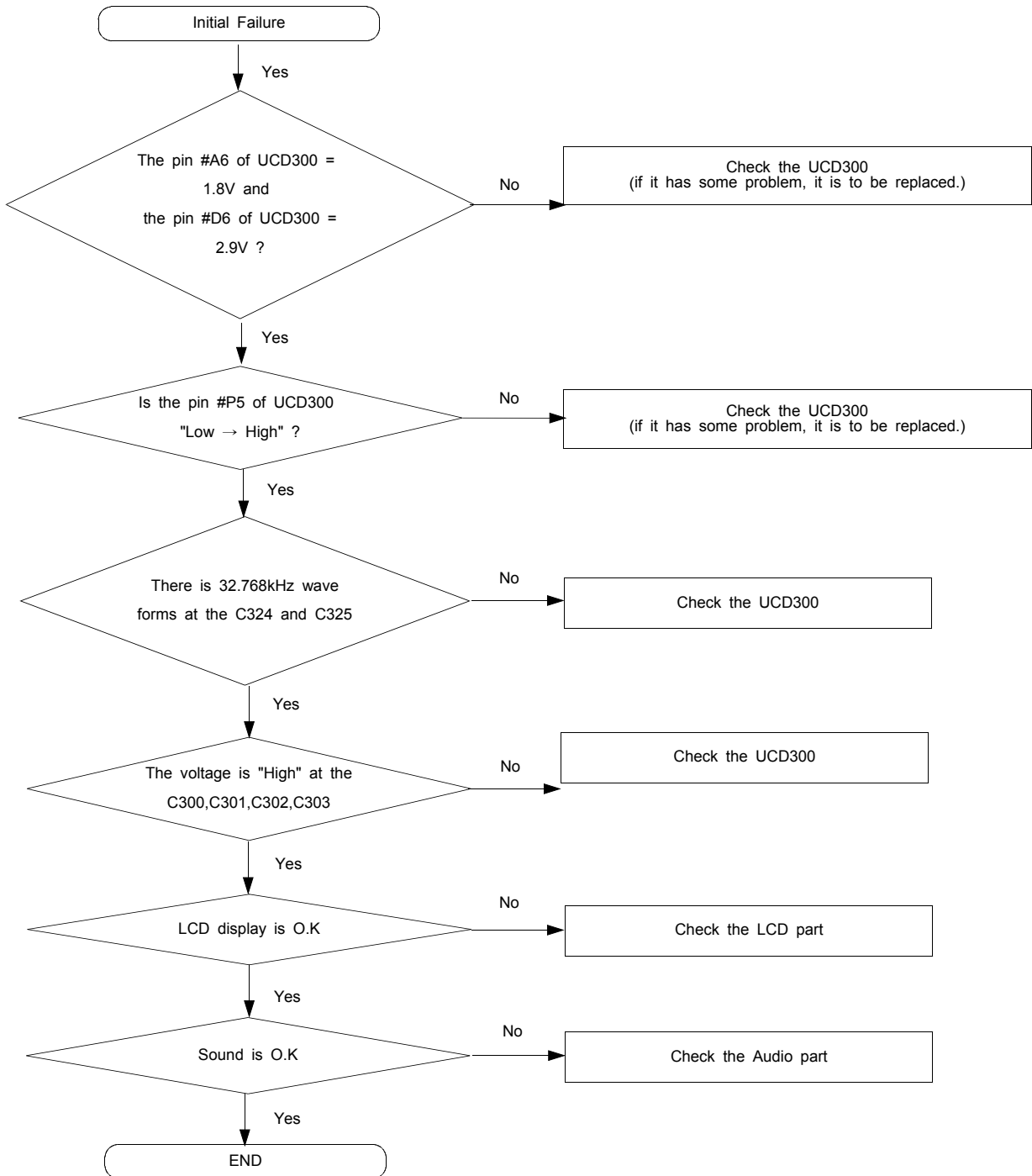
9-1-1. Power ON



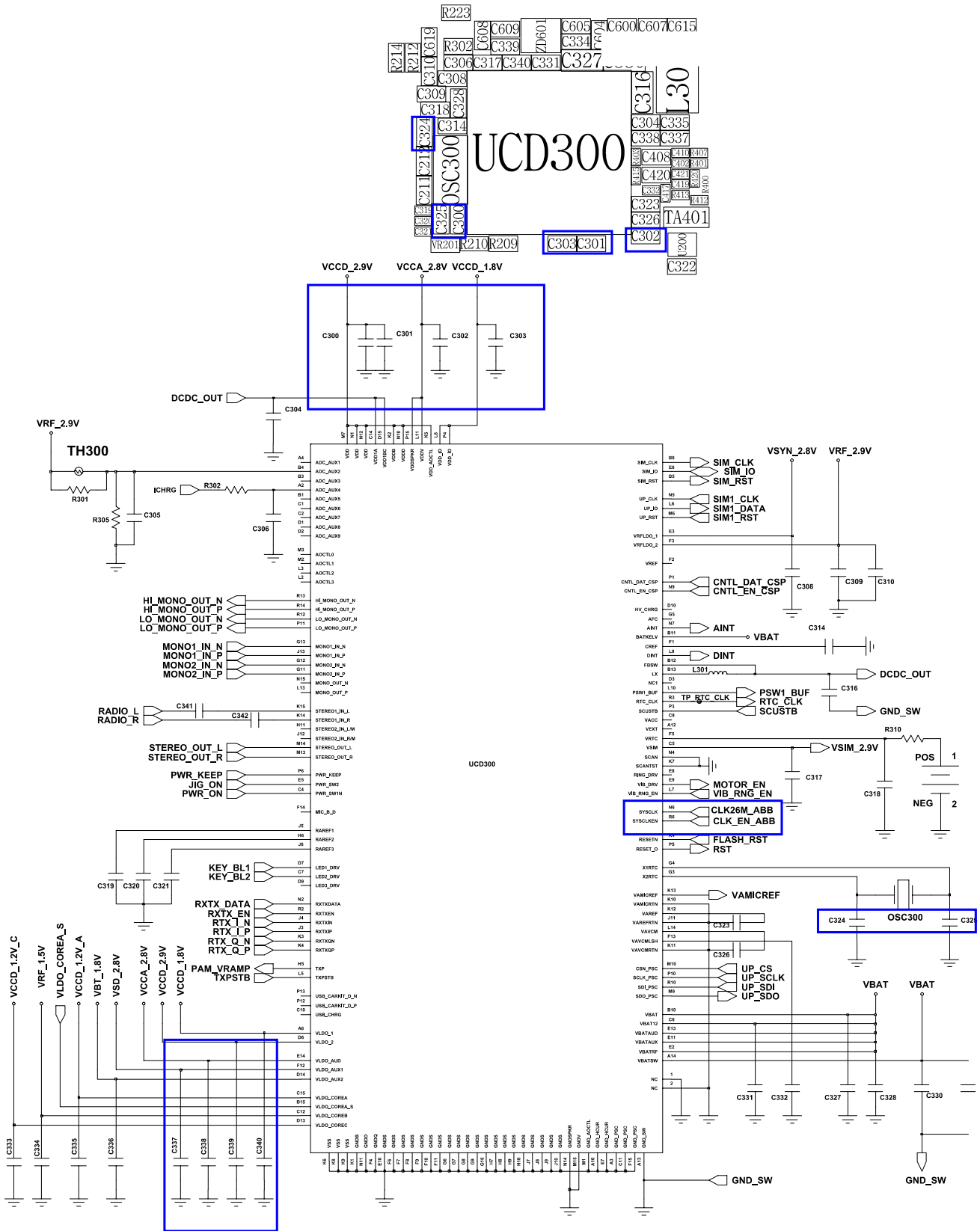
Flow Chart of Troubleshooting



9-1-2. Initial

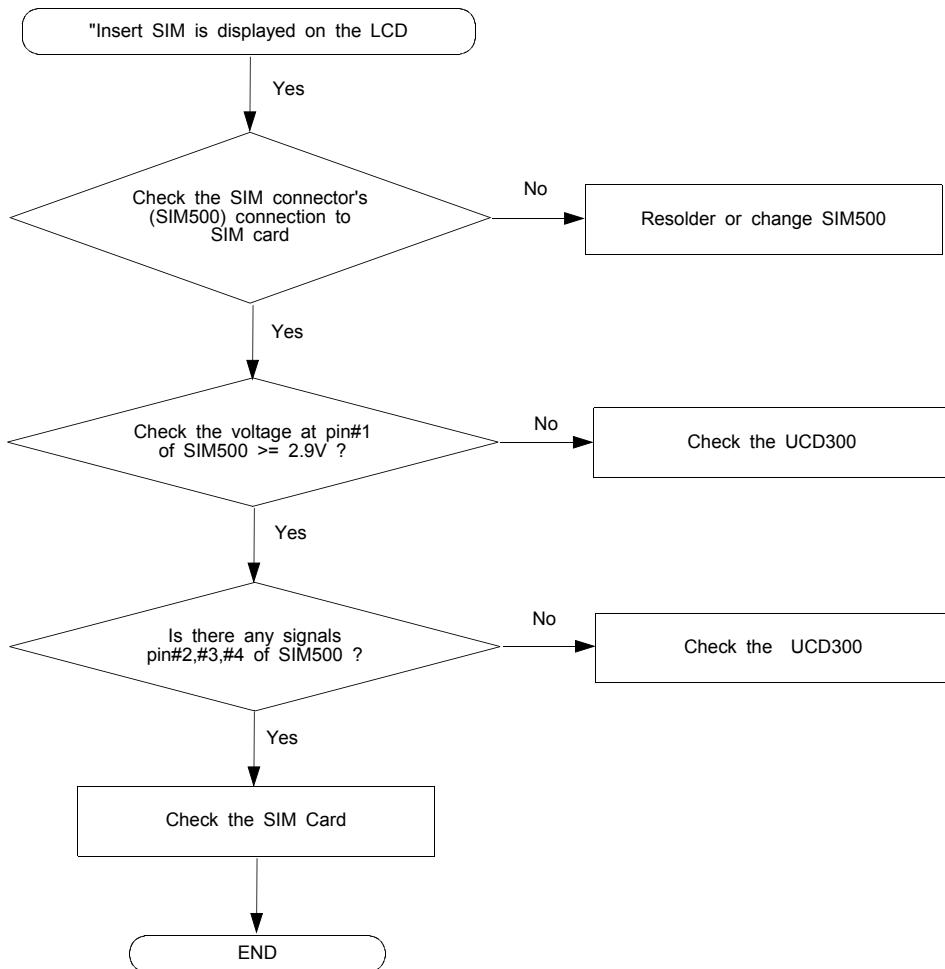


Flow Chart of Troubleshooting

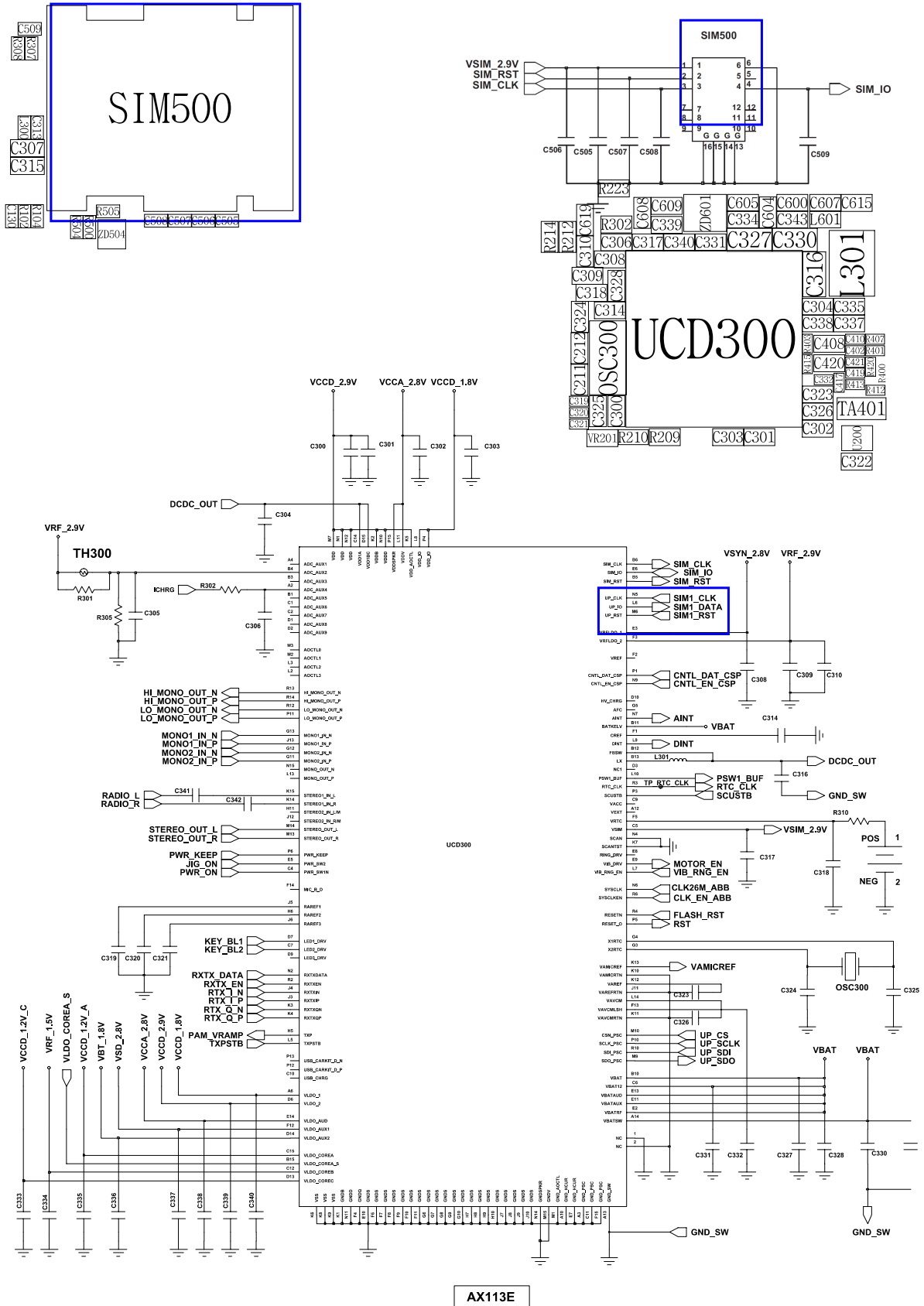


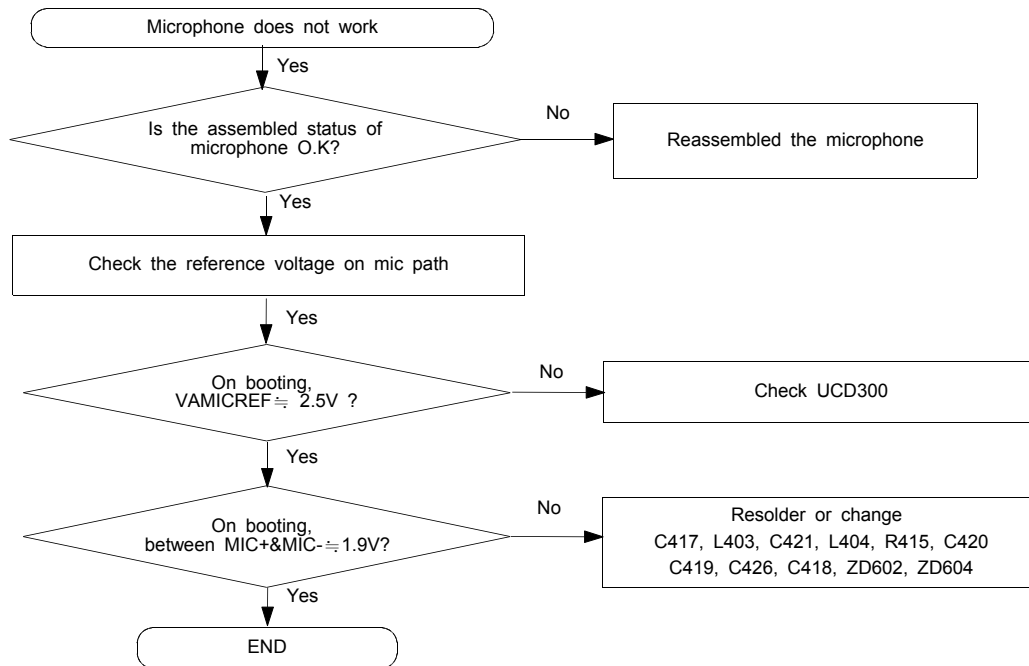
AX113E

9-1-3. Sim Part

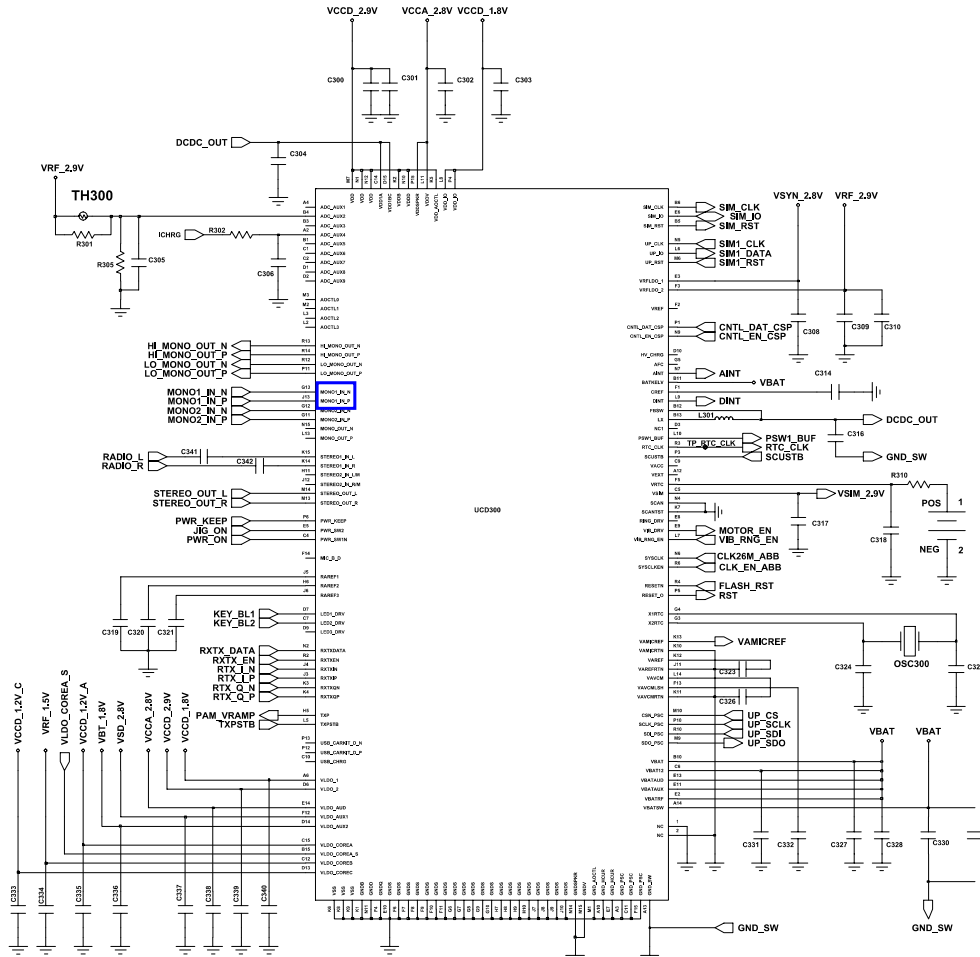
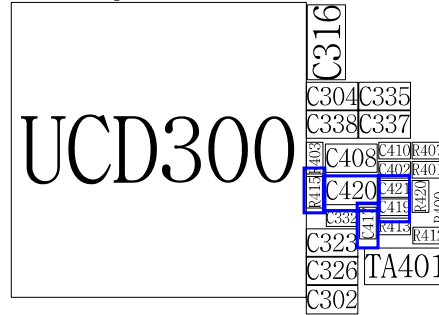
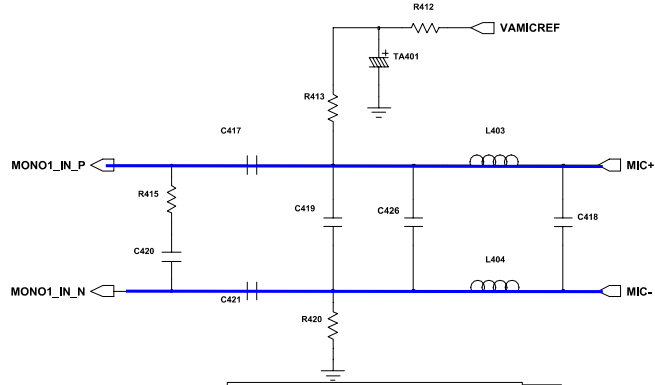
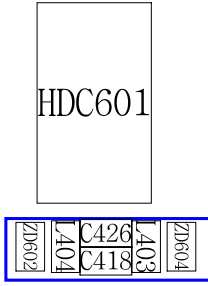


Flow Chart of Troubleshooting



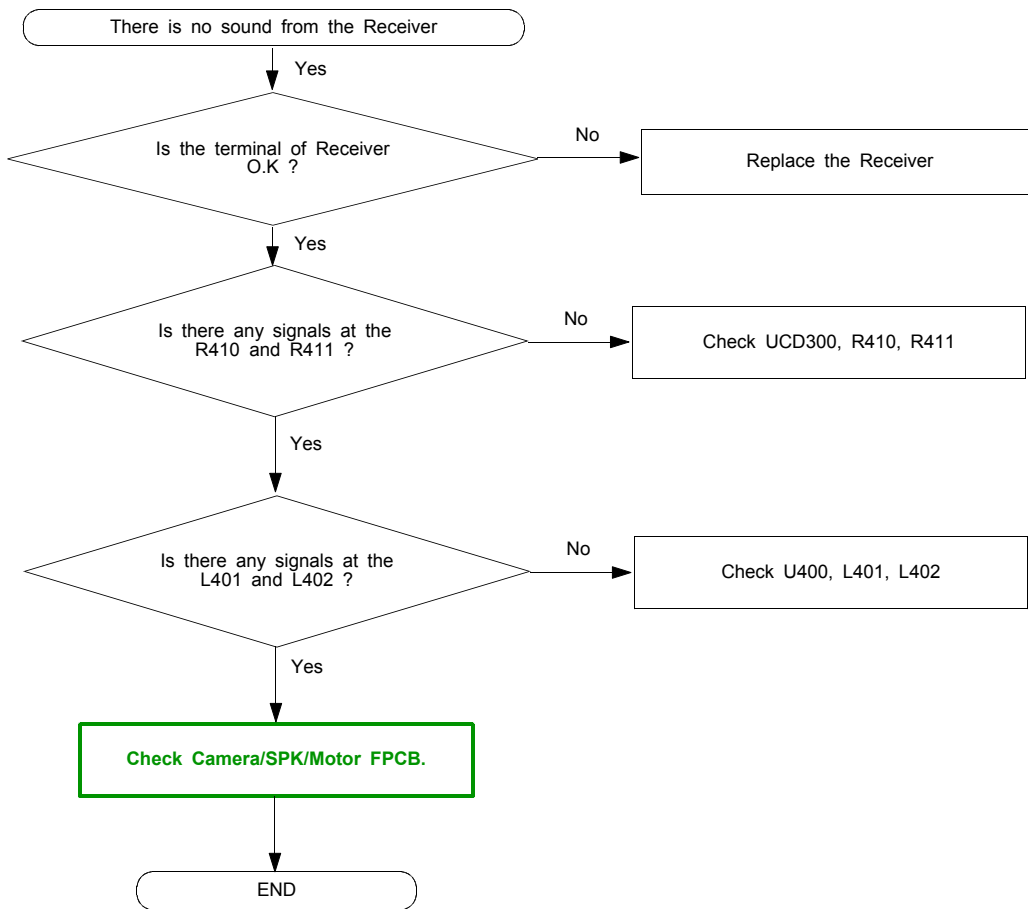
9-1-4. Microphone Part

Flow Chart of Troubleshooting

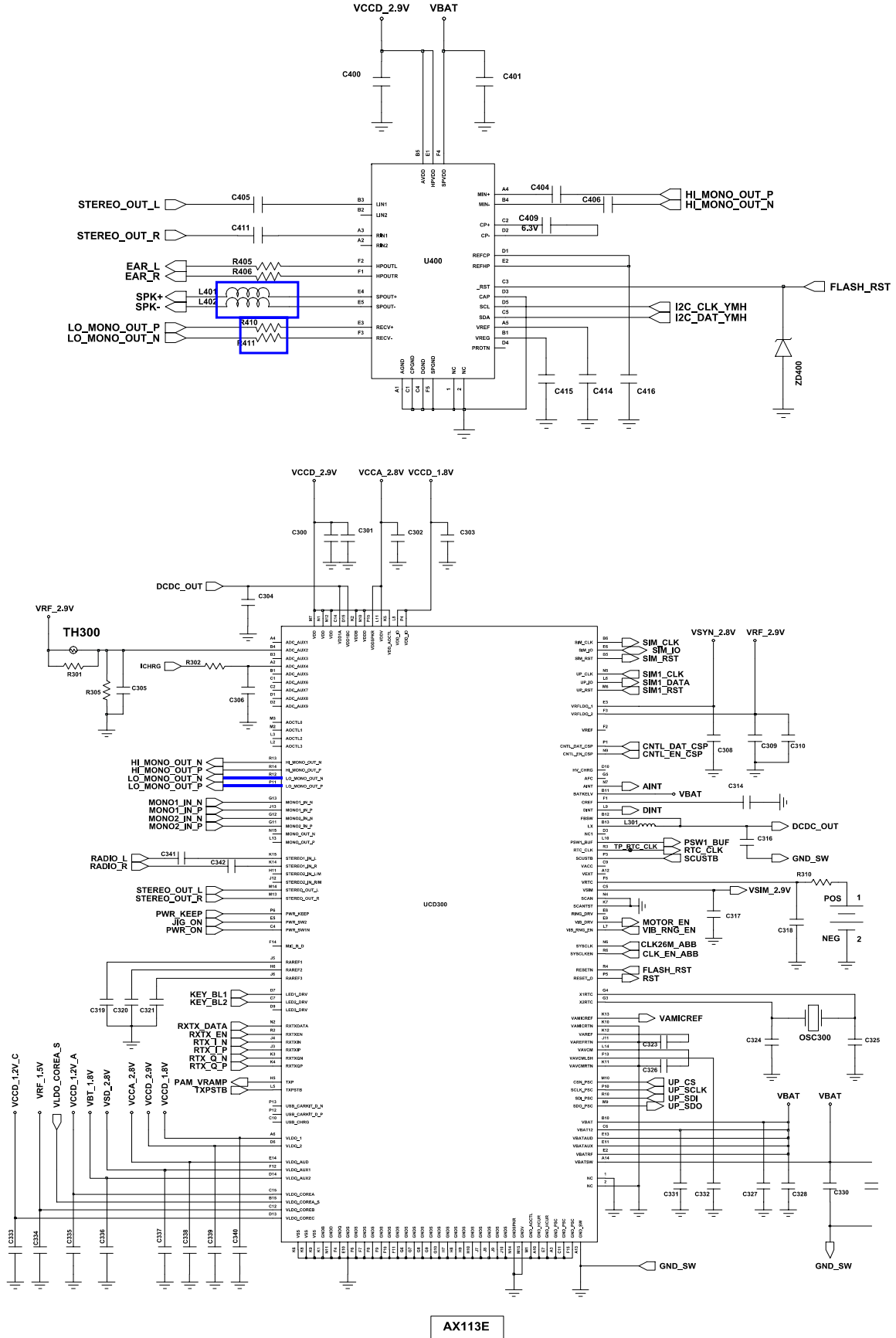


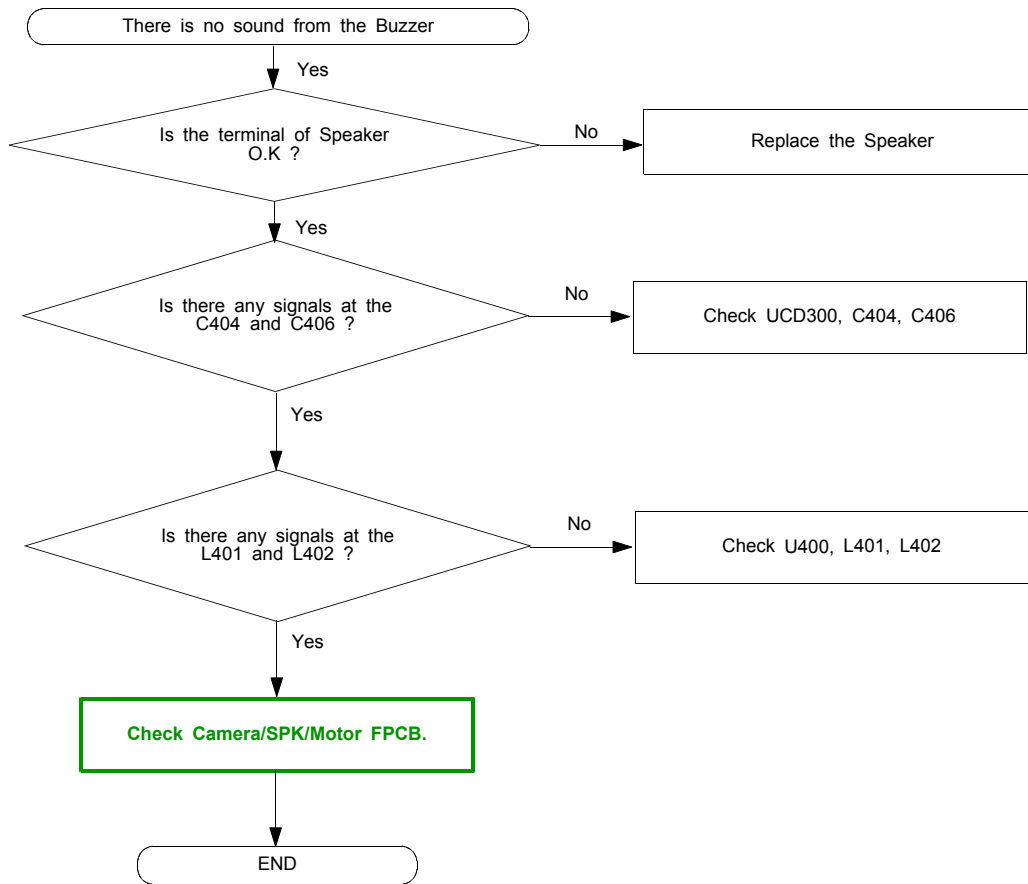
AX113E

9-1-5. Receiver Part

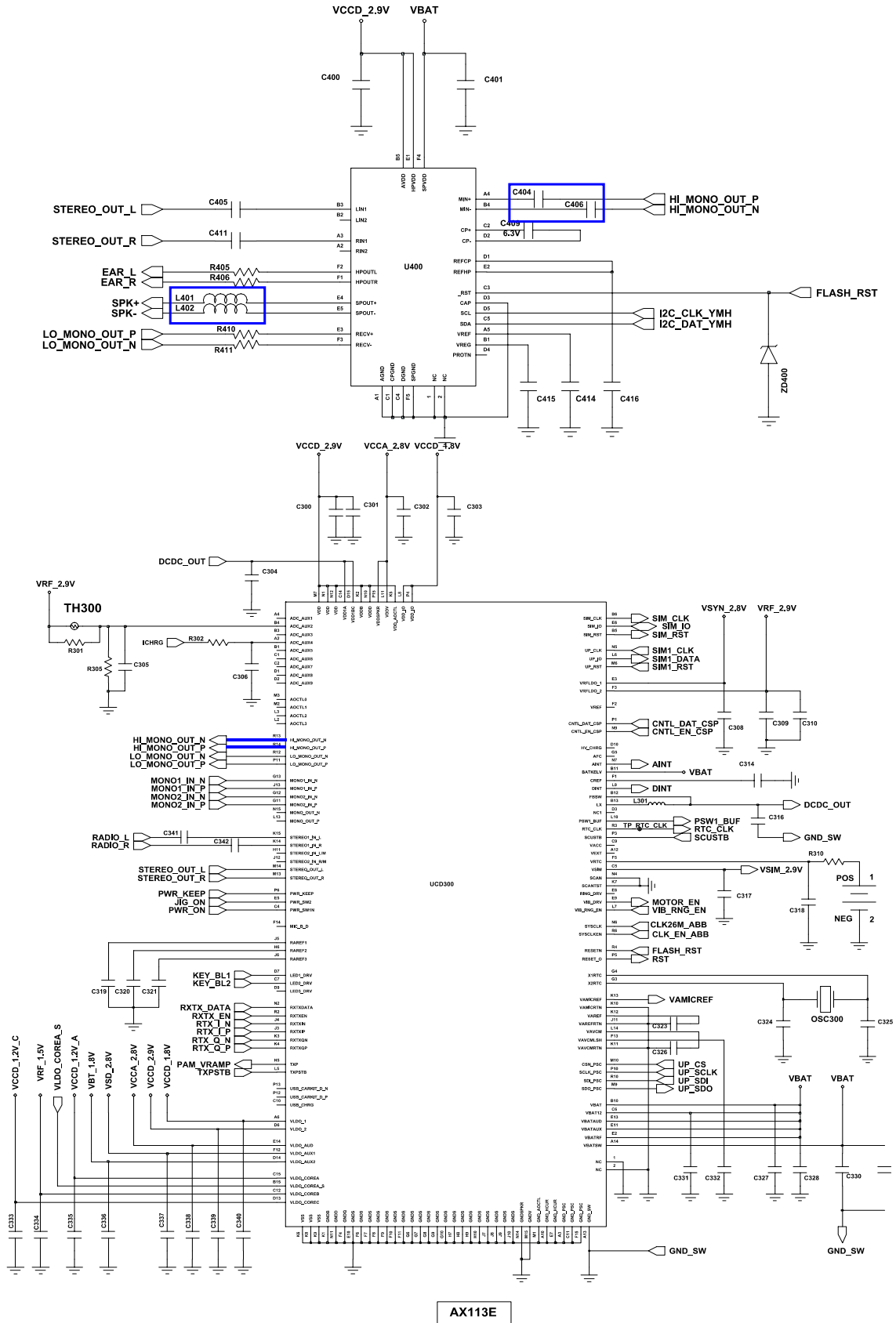


Flow Chart of Troubleshooting

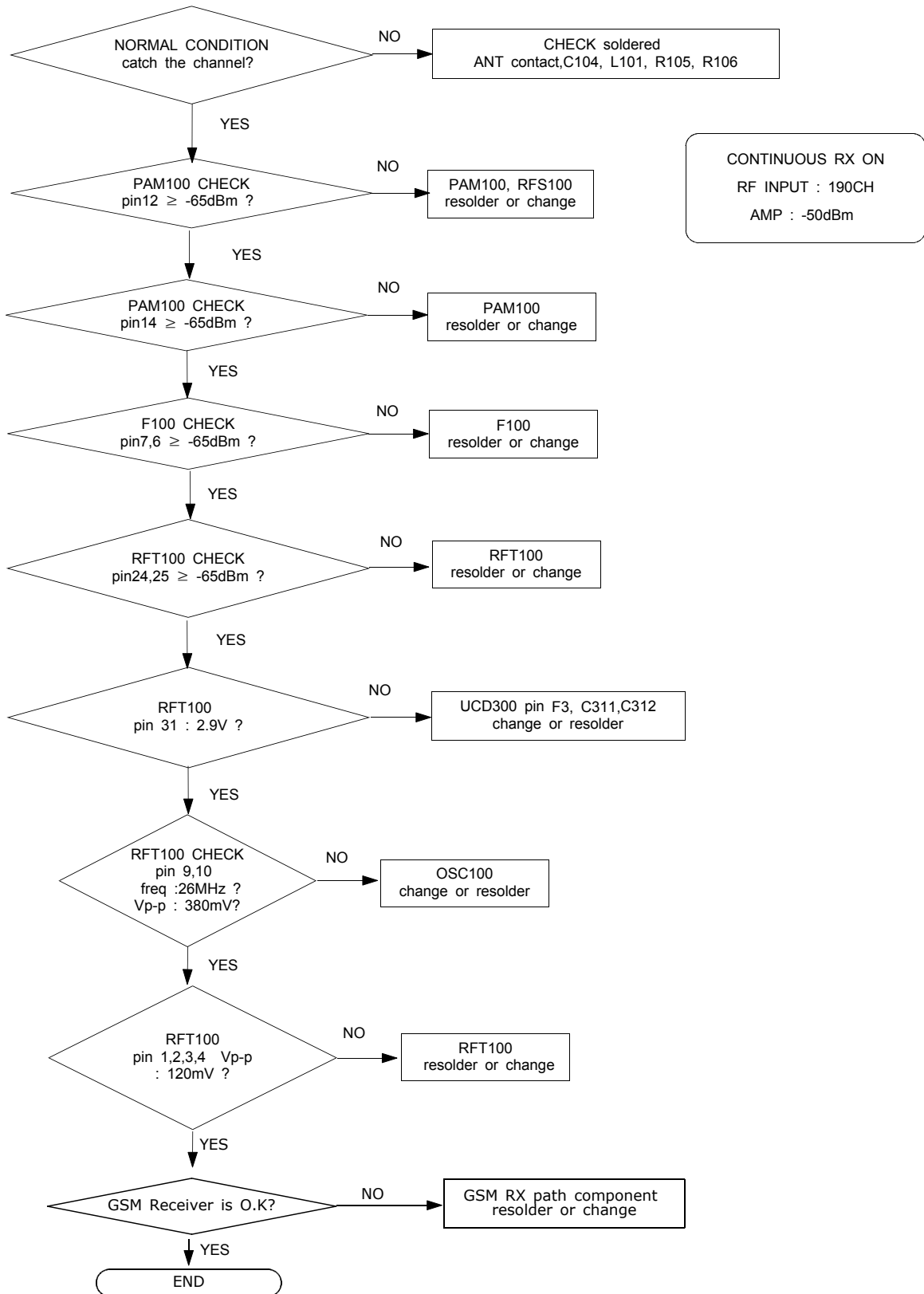


9-1-6. SPK Part

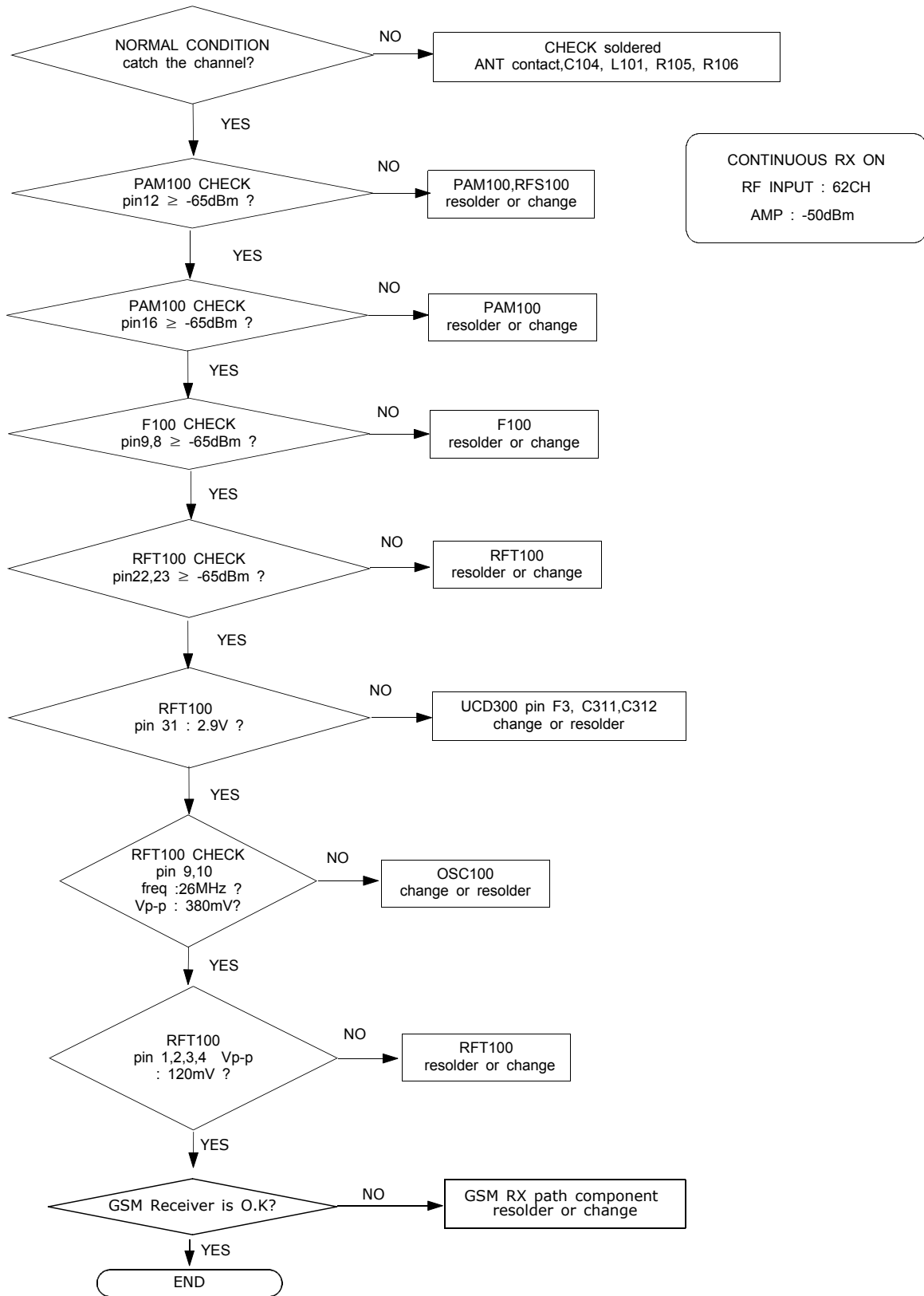
Flow Chart of Troubleshooting



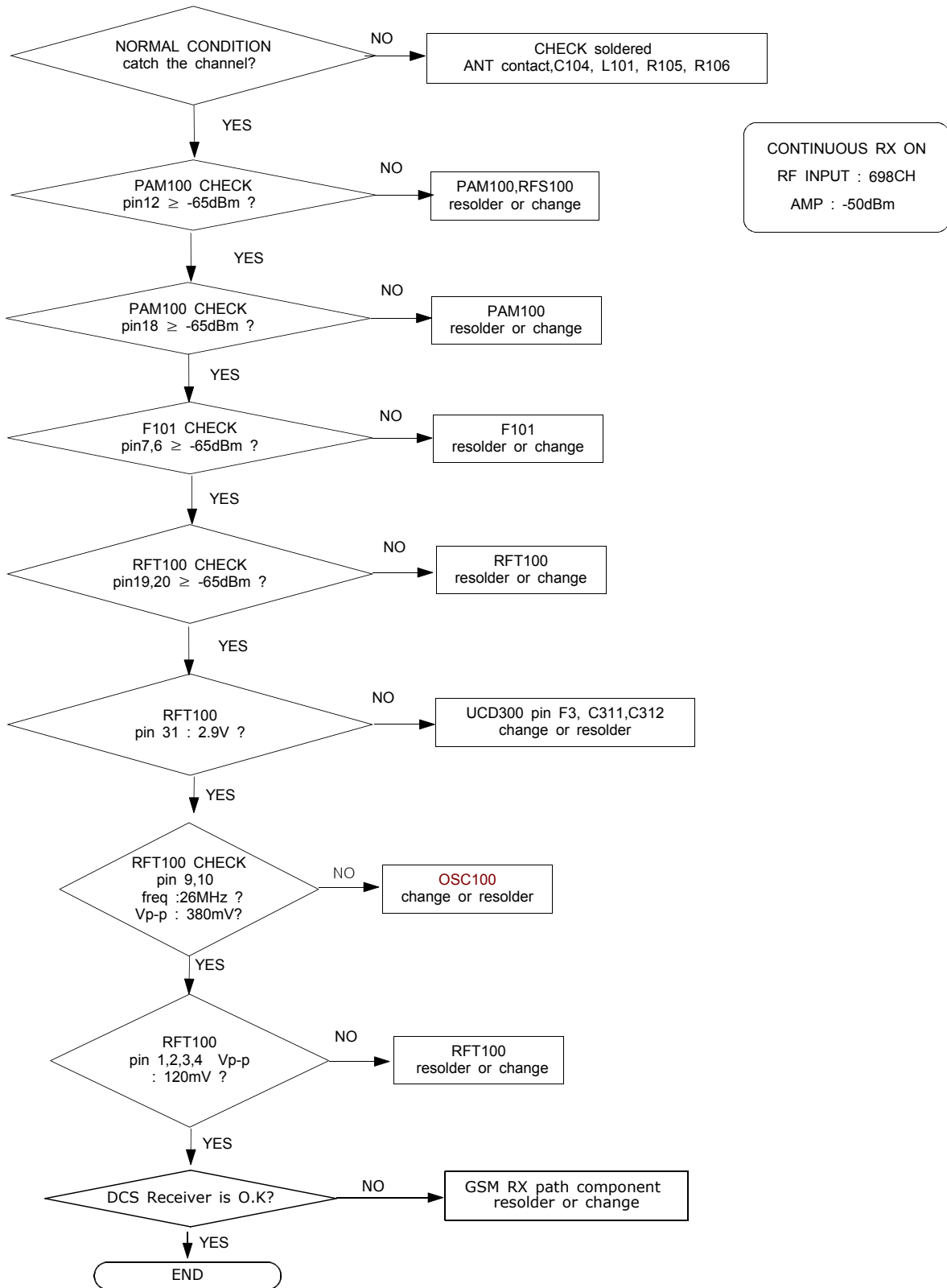
9-2.RF
9-2-1. GSM850 RX



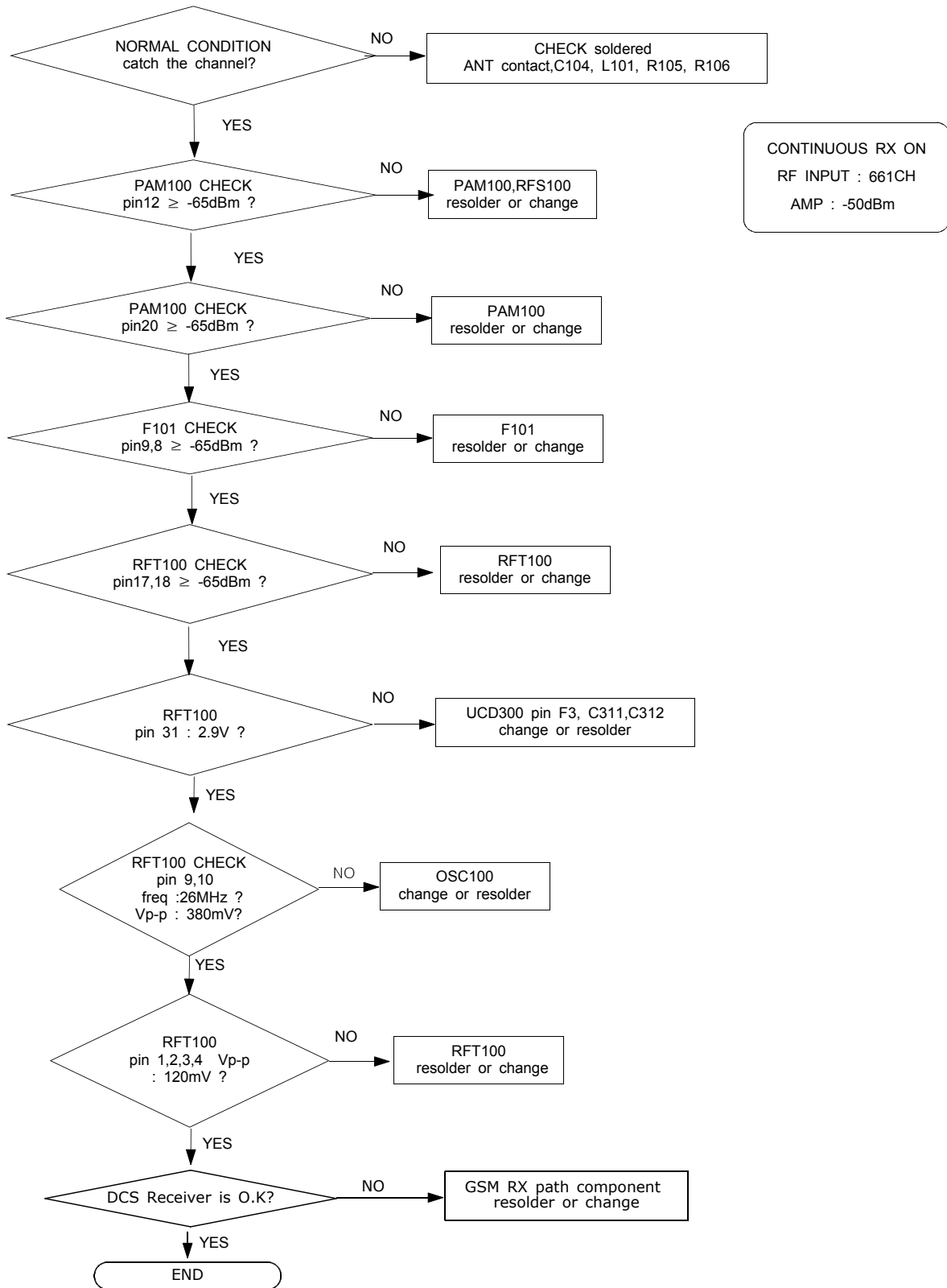
9-2-2. EGSM RX



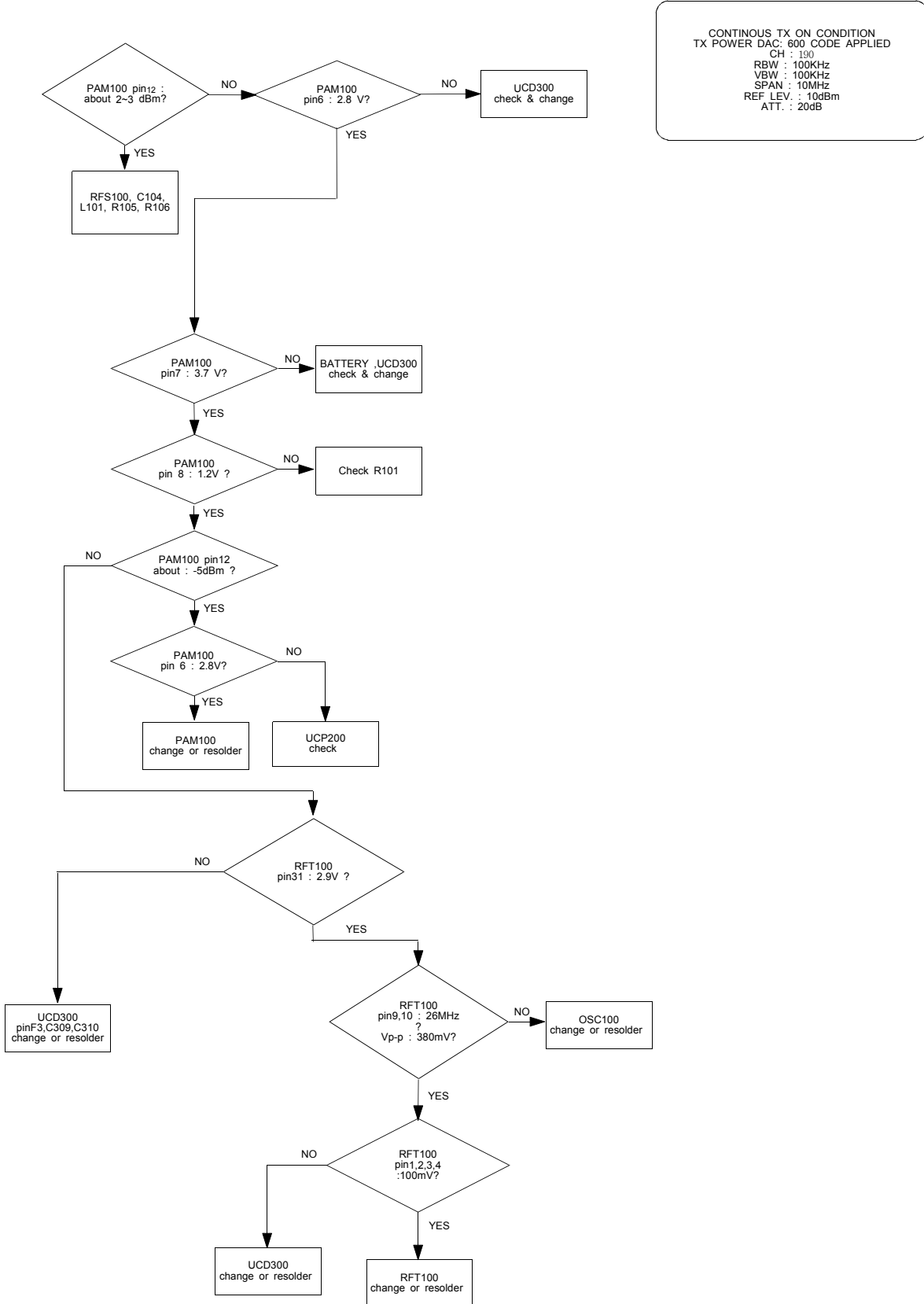
9-2-3. DCS RX



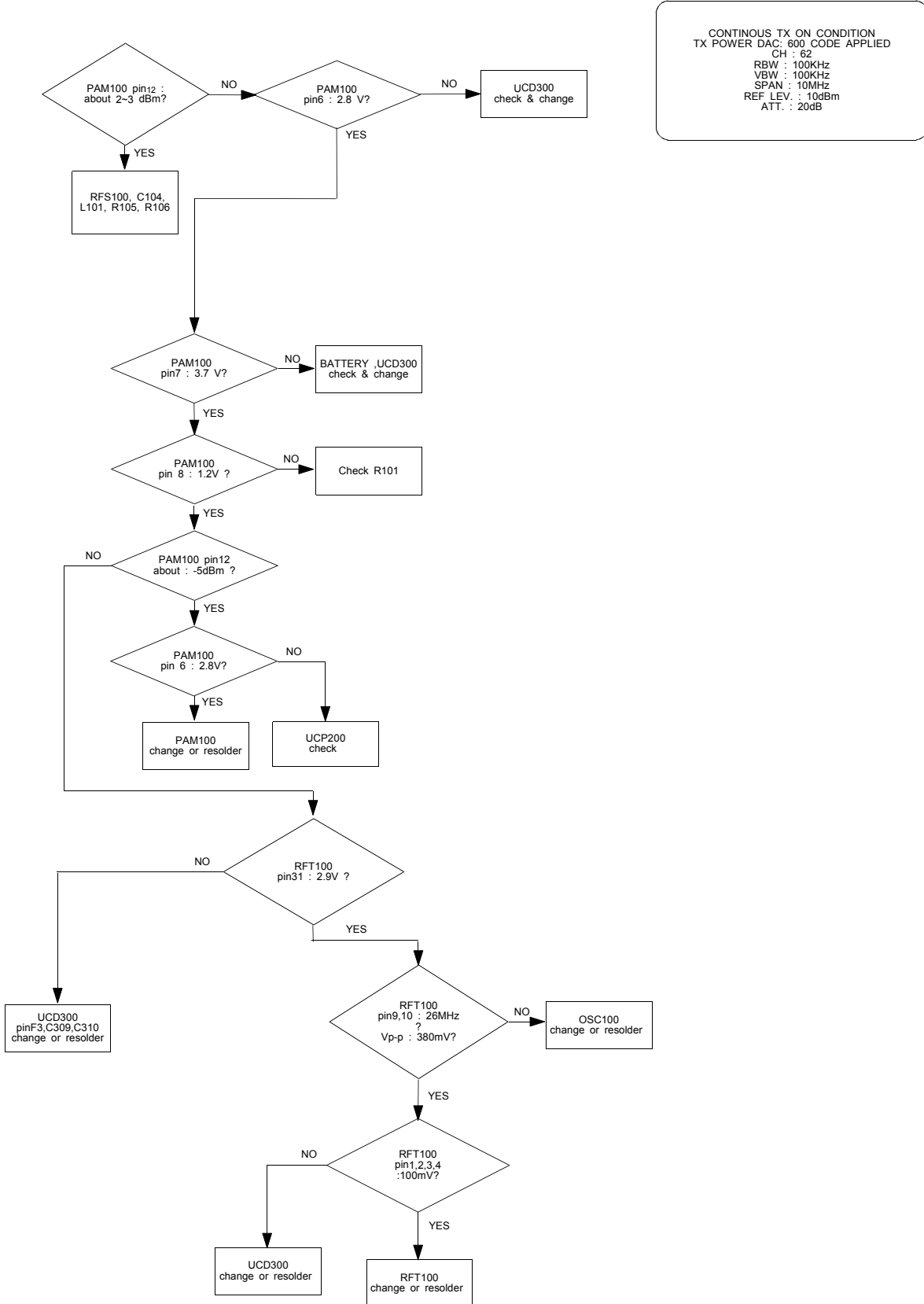
9-2-4. PCS RX



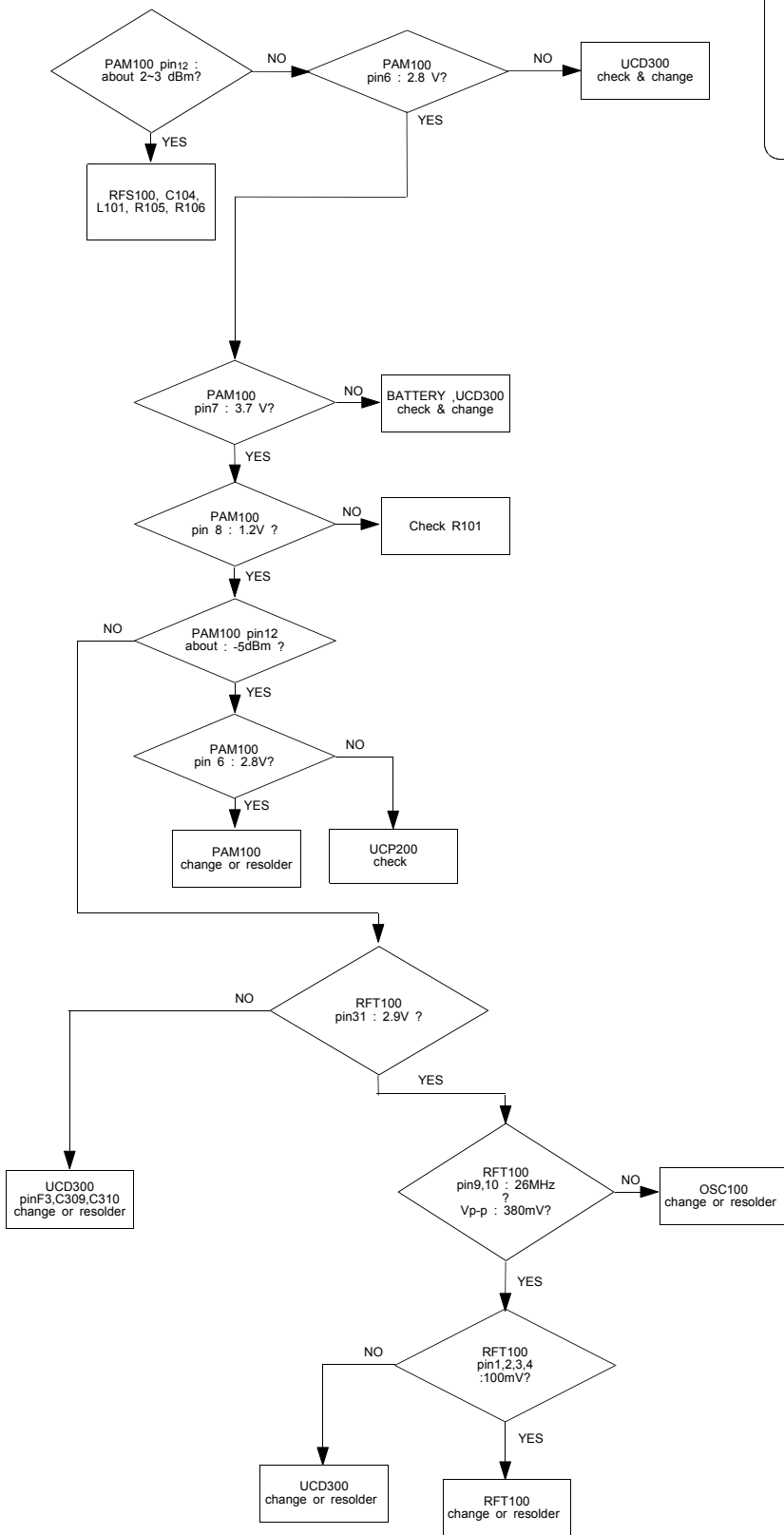
9-2-5. GSM850 TX



9-2-6. EGSM TX

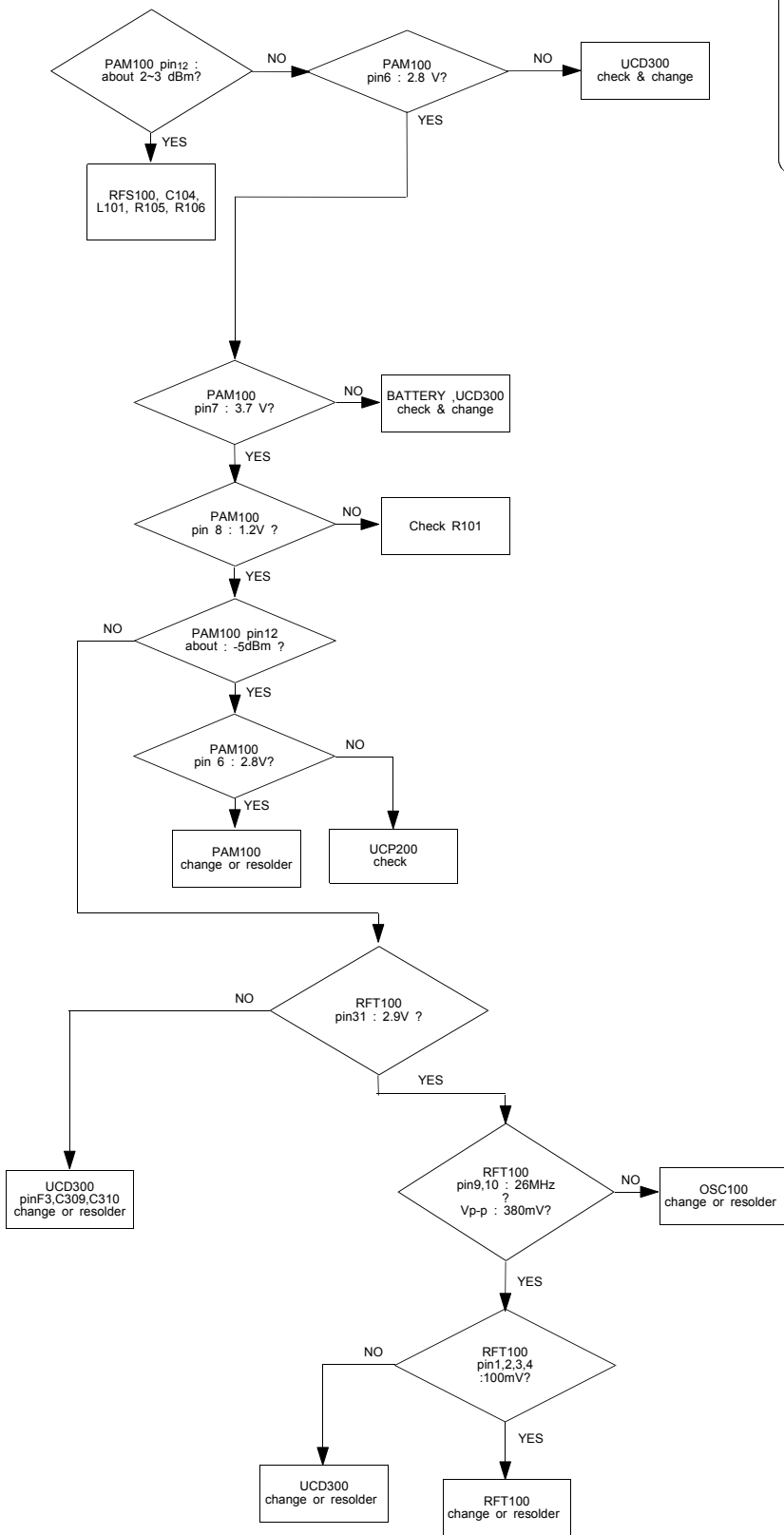


9-2-7. DCS TX

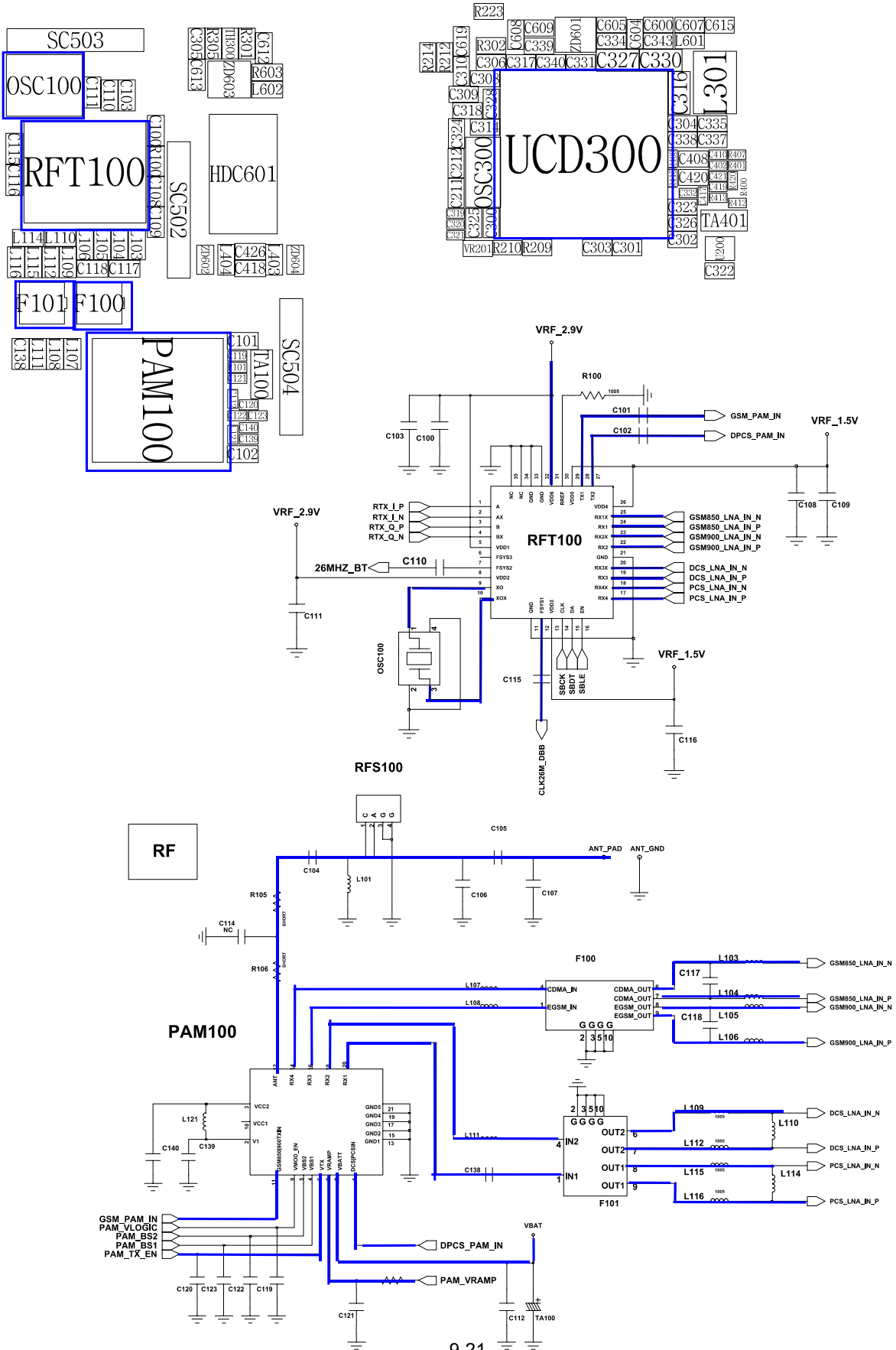


CONTINUOUS TX ON CONDITION
 CH : 698CH(DCS)
 TX POWER CODE: 520 CODE Applied
 RBW : 100KHz
 VBW : 100KHz
 SPAN : 10MHz
 REF LEV. : 10dBm
 ATT. : 20dB

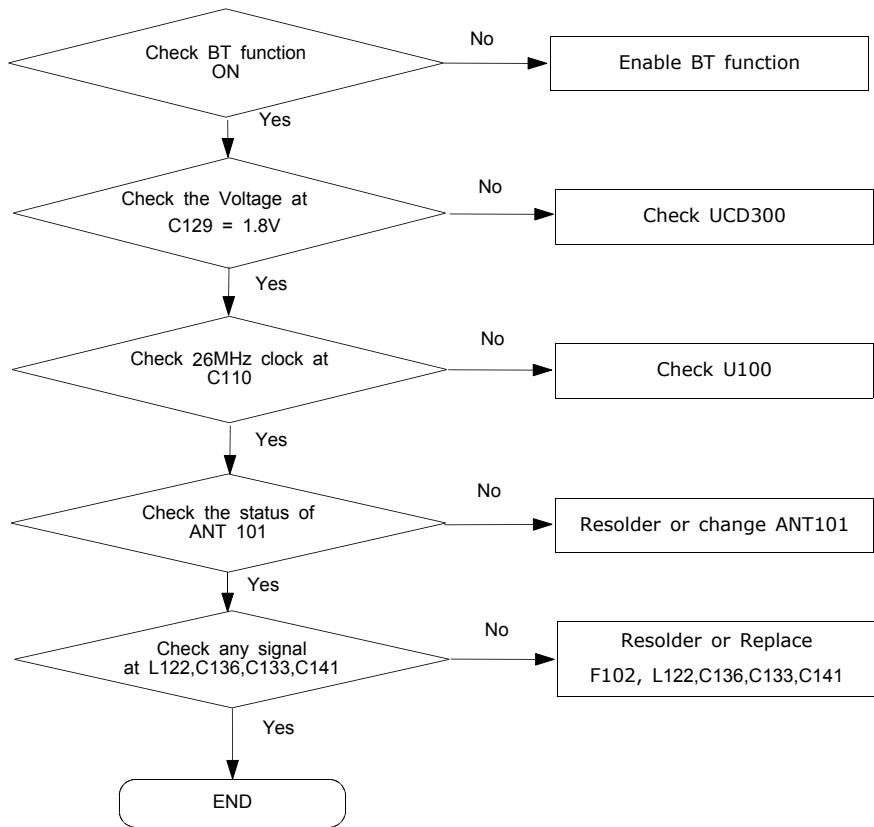
9-2-8. PCS TX



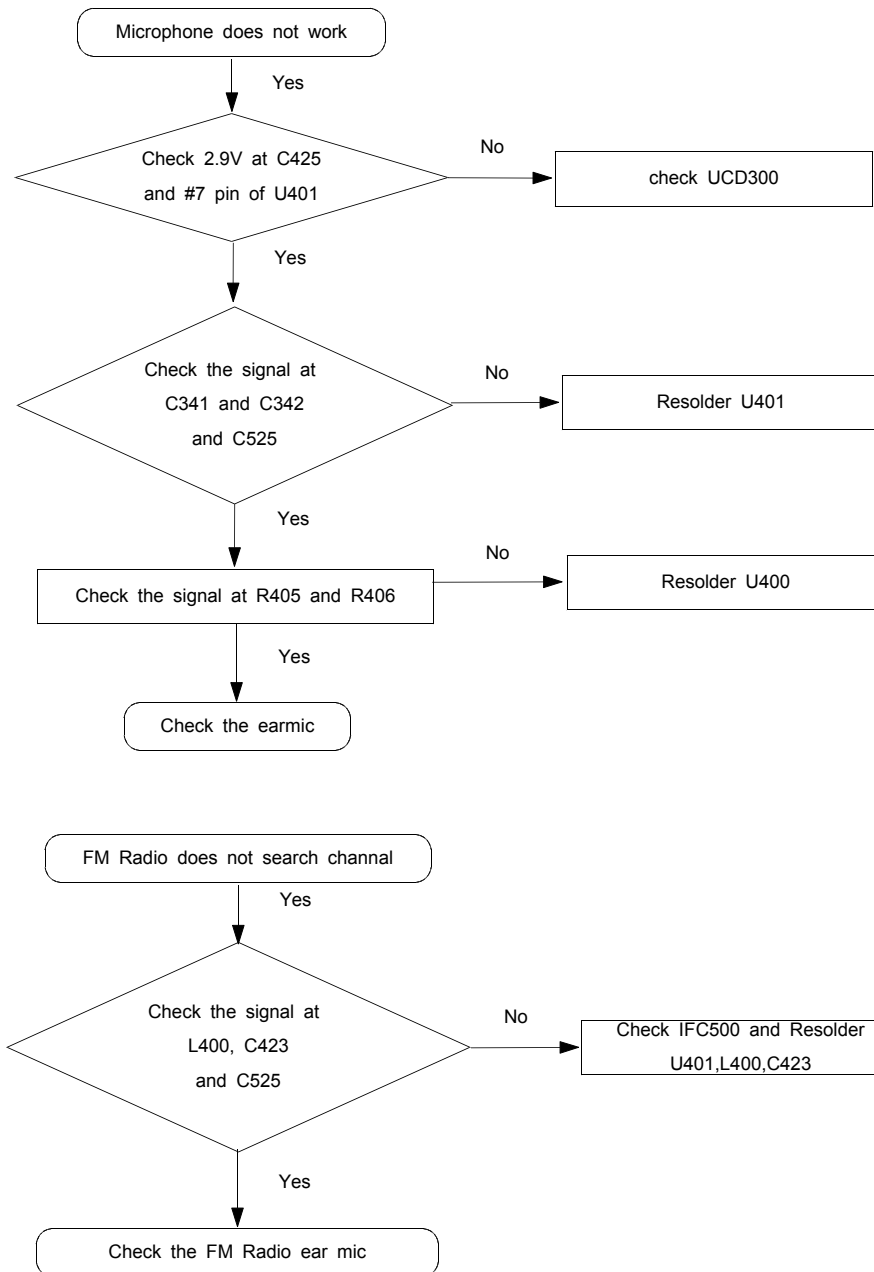
CONTINUOUS TX ON CONDITION
 CH : 698CH(DCS)
 TX POWER CODE: 520 CODE Applied
 RBW : 100KHz
 VBW : 100KHz
 SPAN : 10MHz
 REF LEV. : 10dBm
 ATT. : 20dB

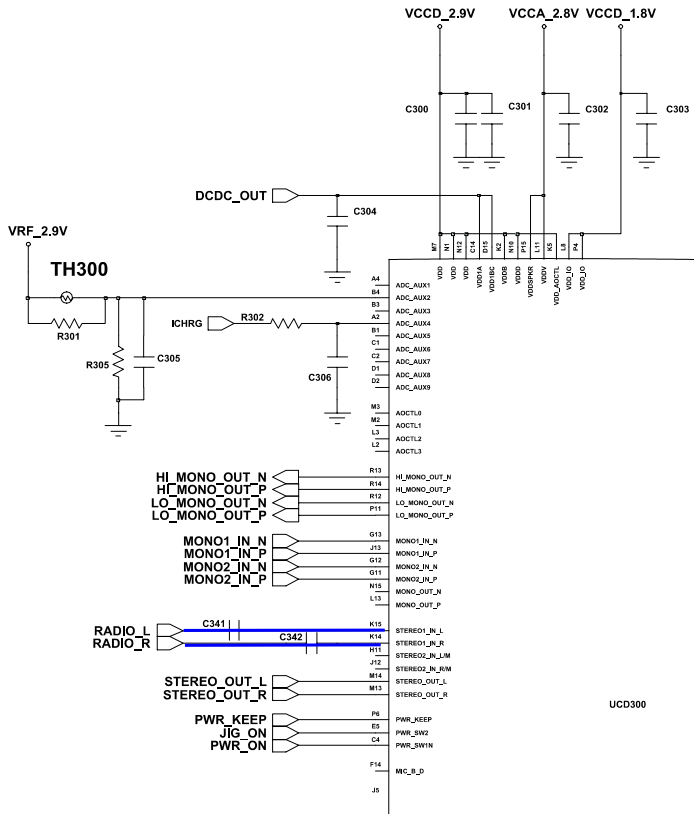
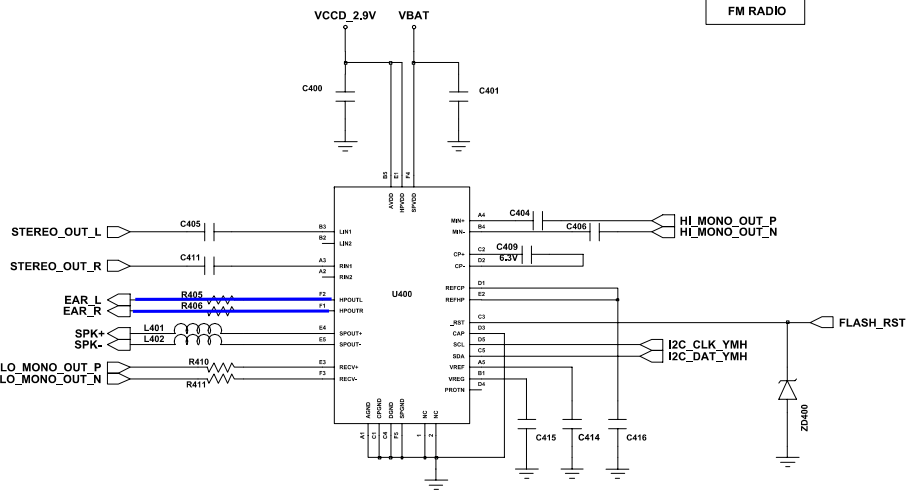
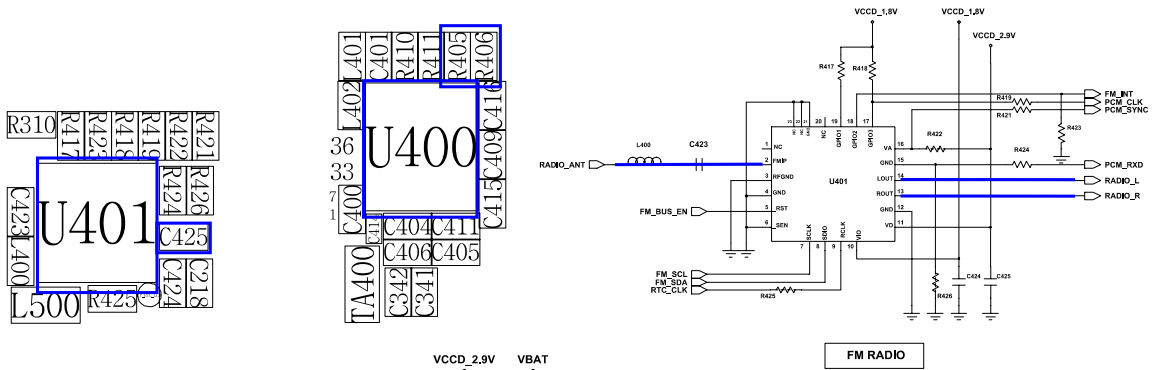


9-3. Bluetooth



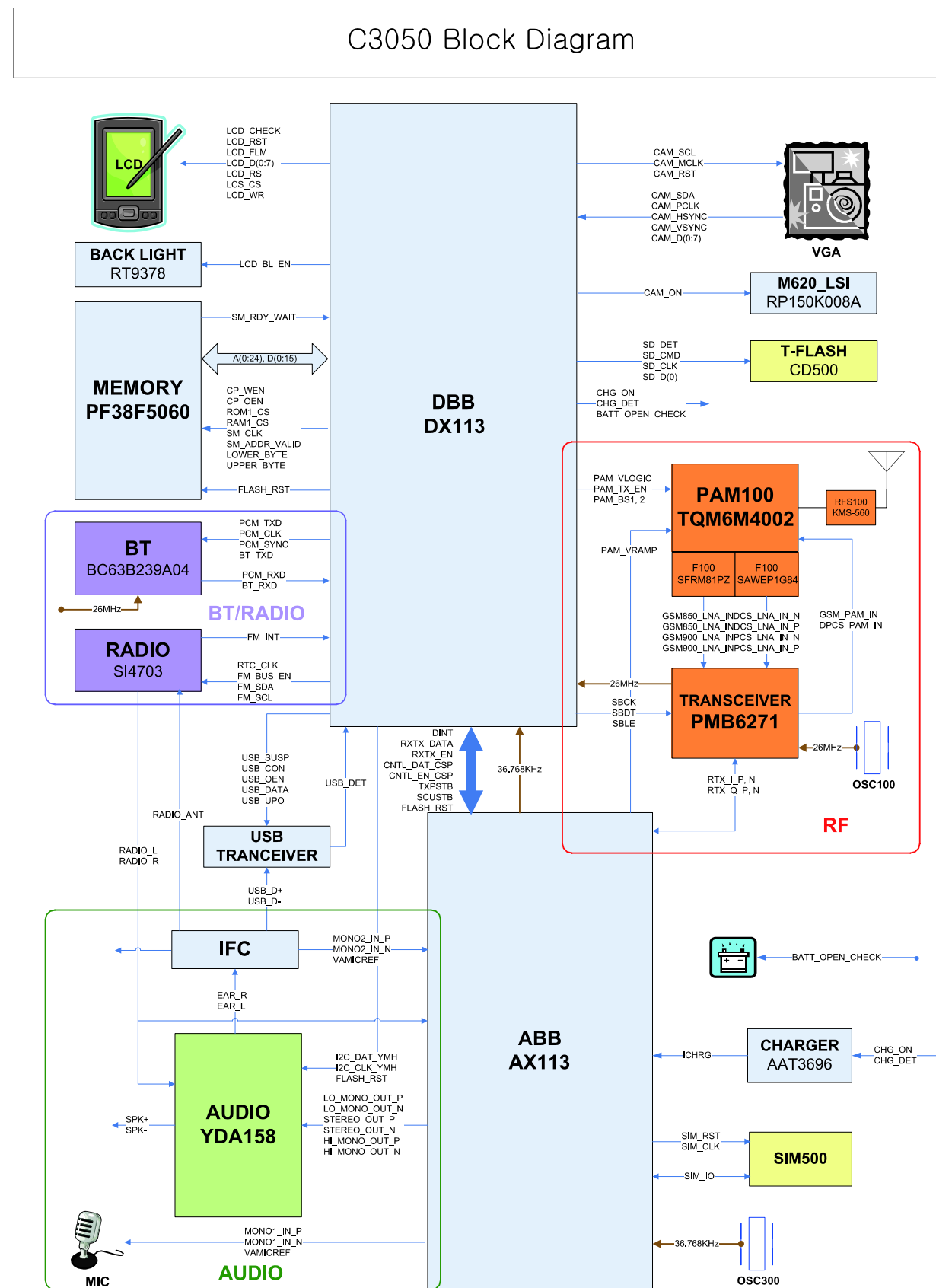
9-4. FM Radio Part



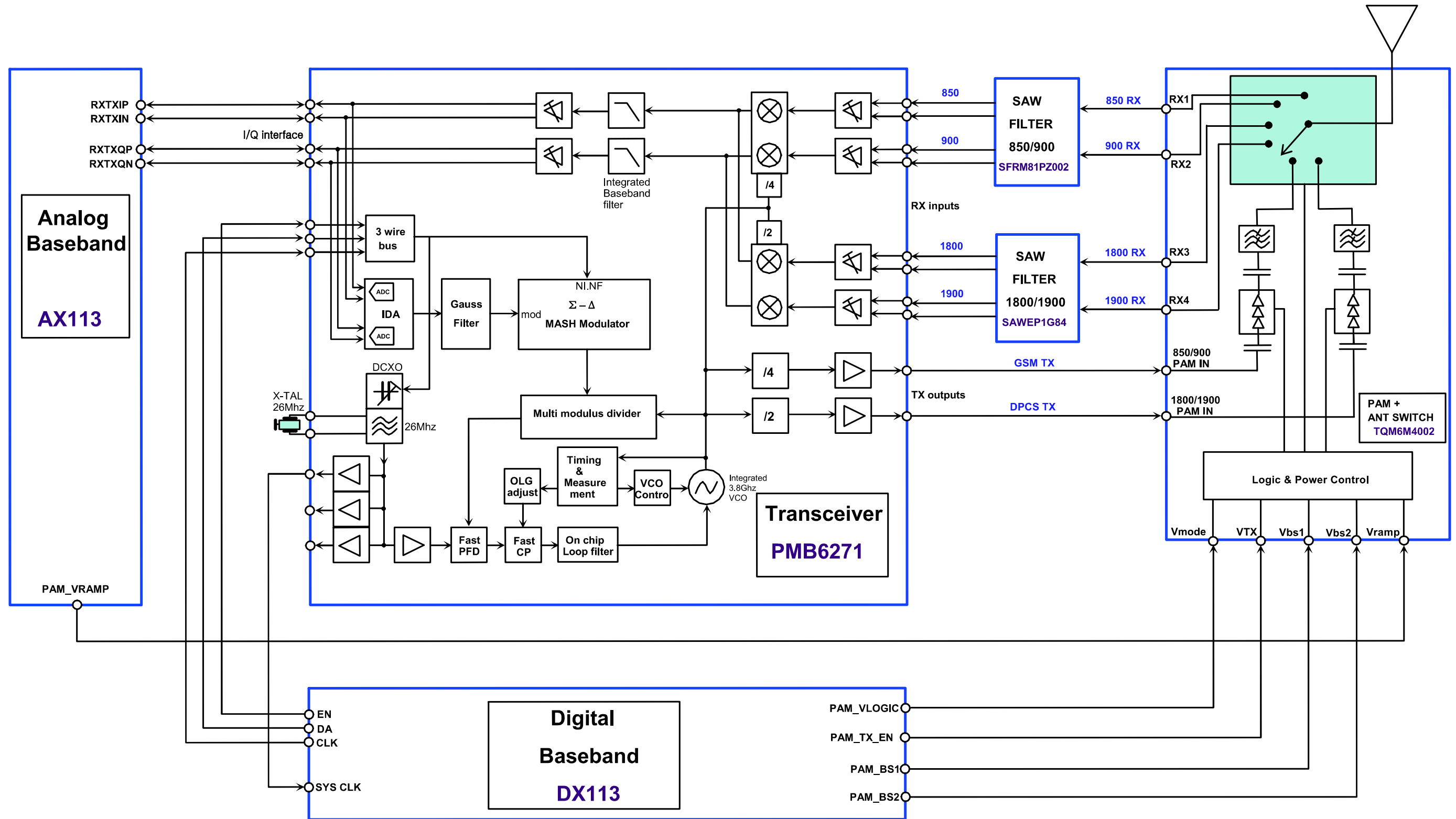


7. Block Diagrams

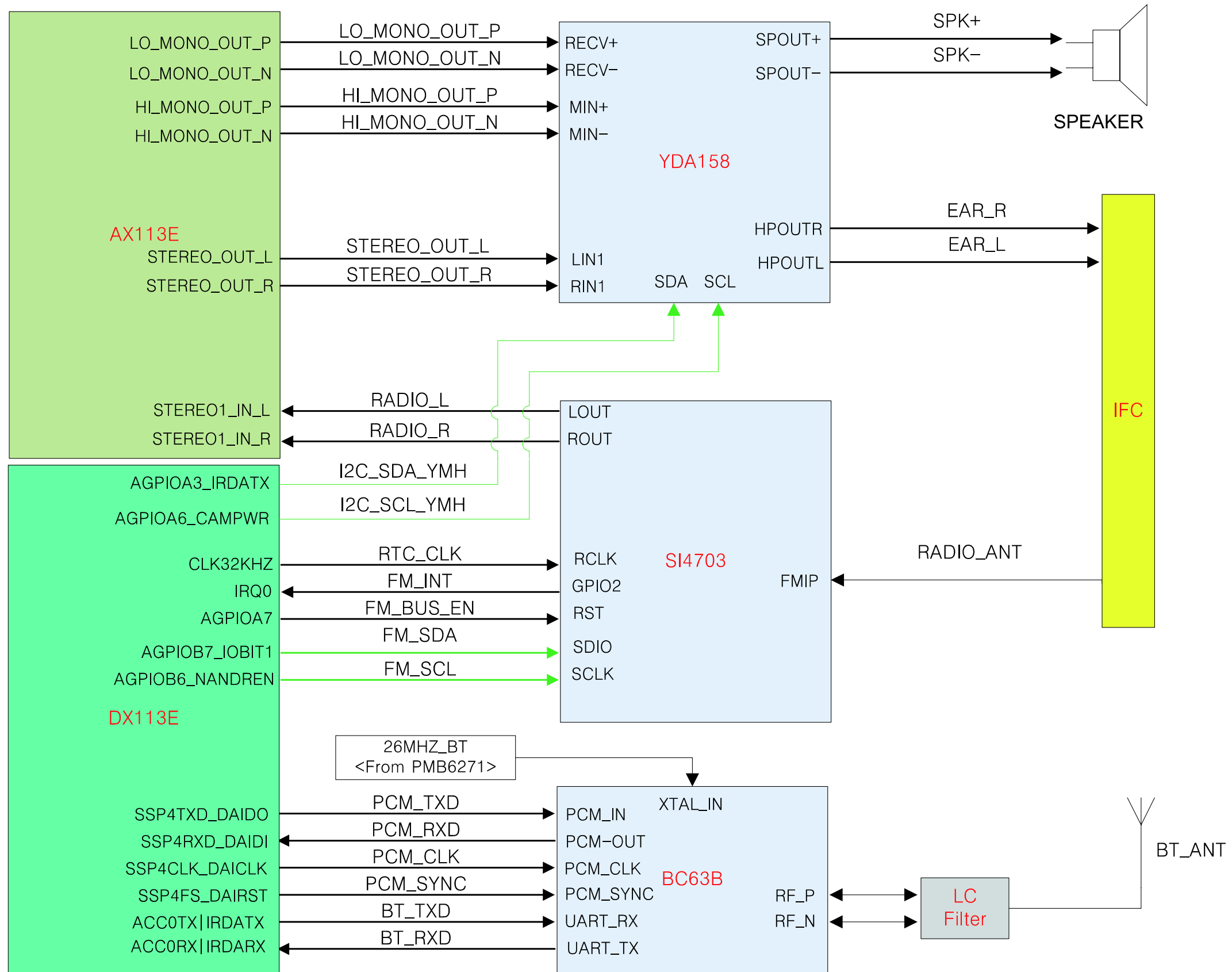
7-1. Block Diagram



7-2. RF Block Diagram

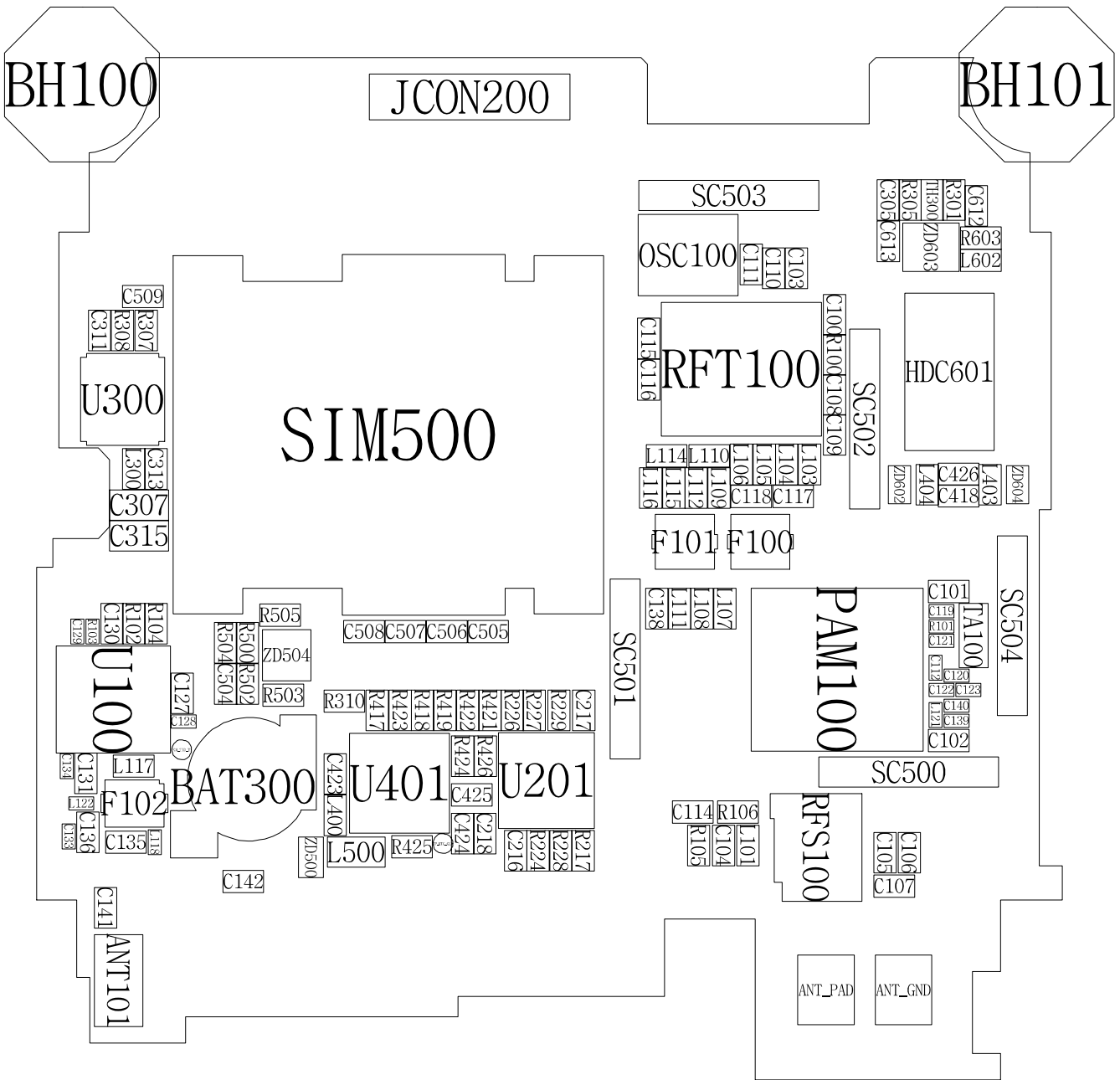


7-3. Audio Block Diagram



8. PCB Diagrams

Top



Bottom

