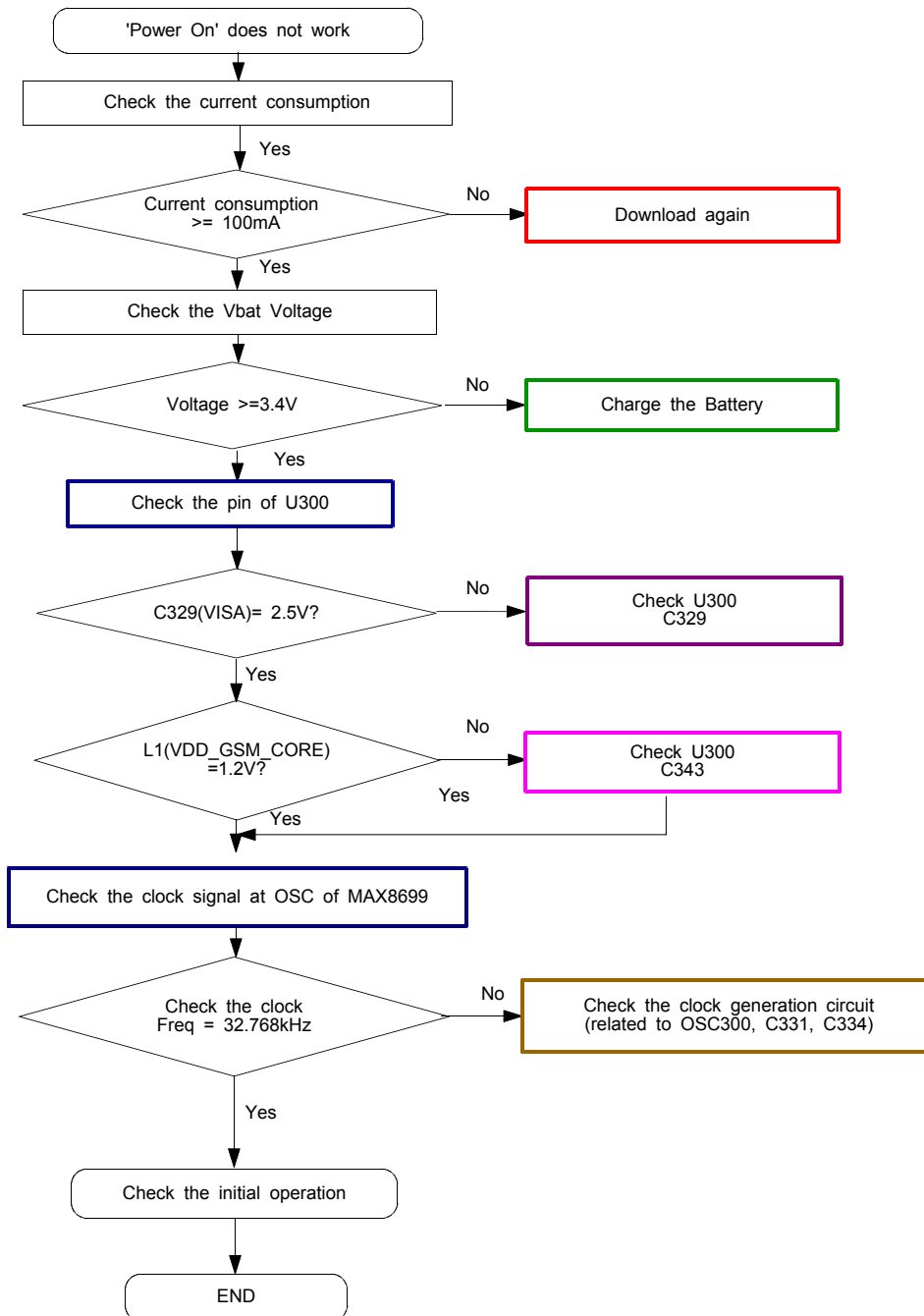


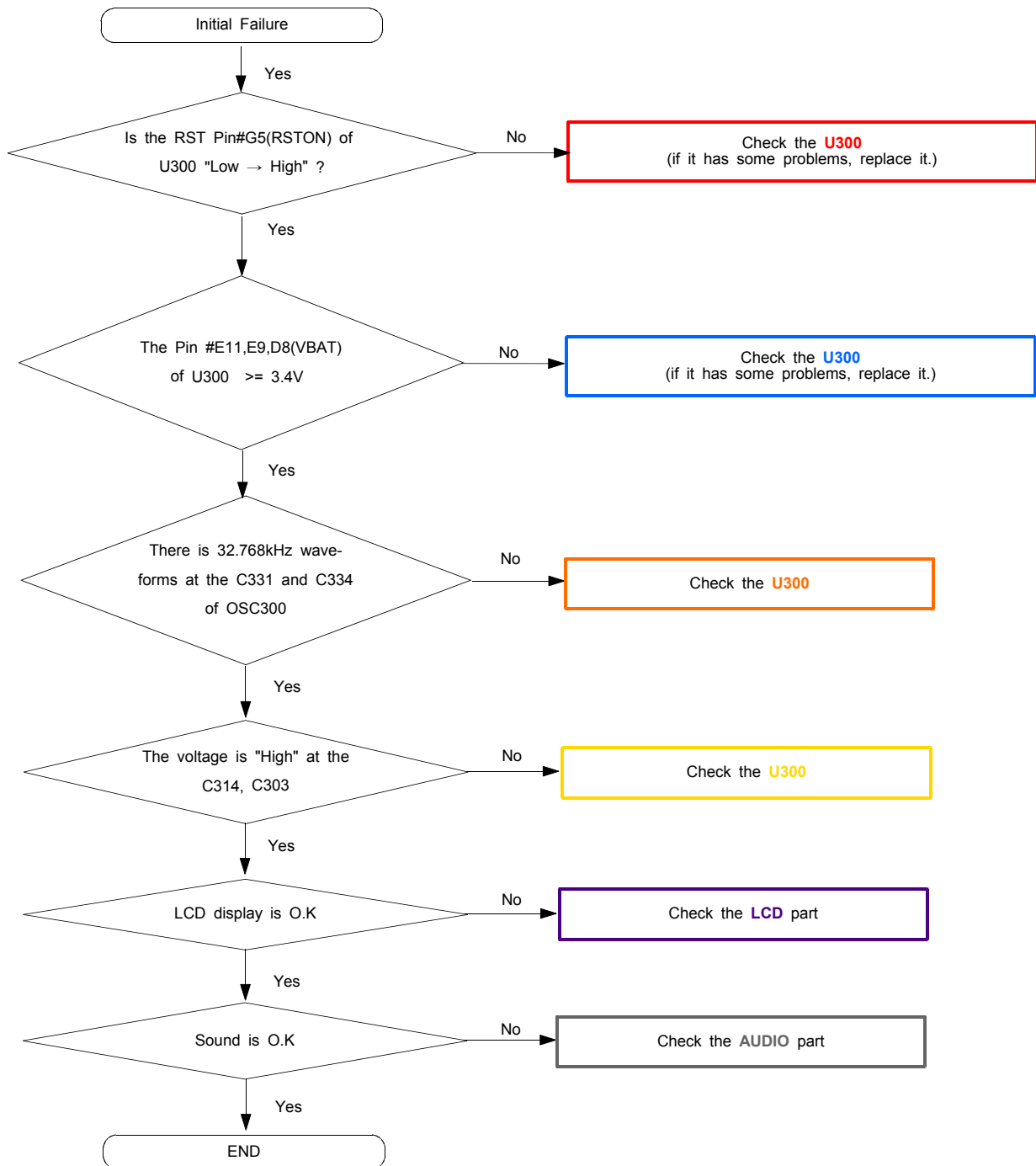
10. Flow Chart of Troubleshooting

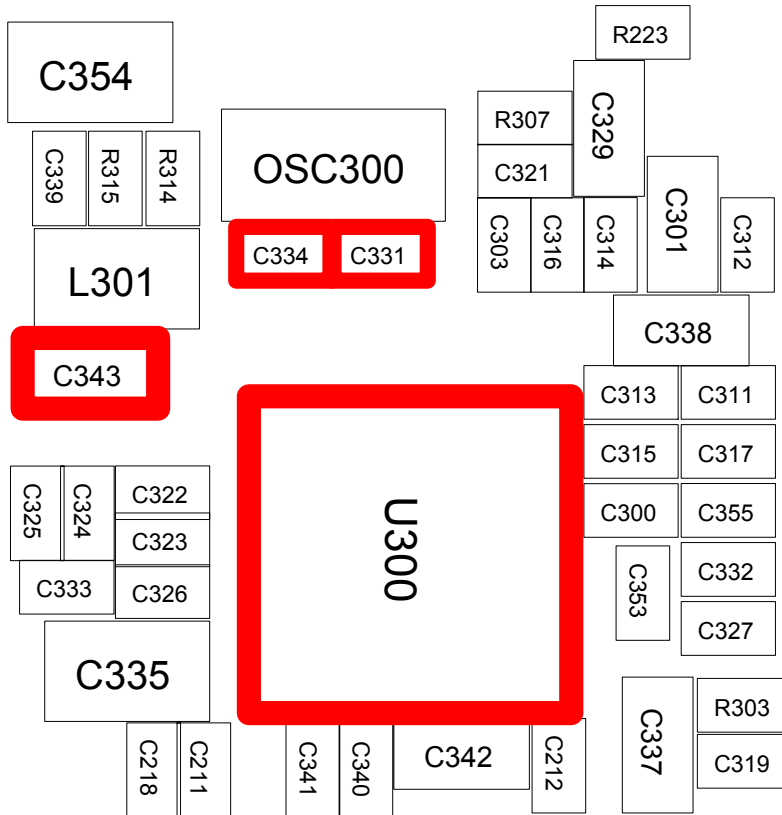
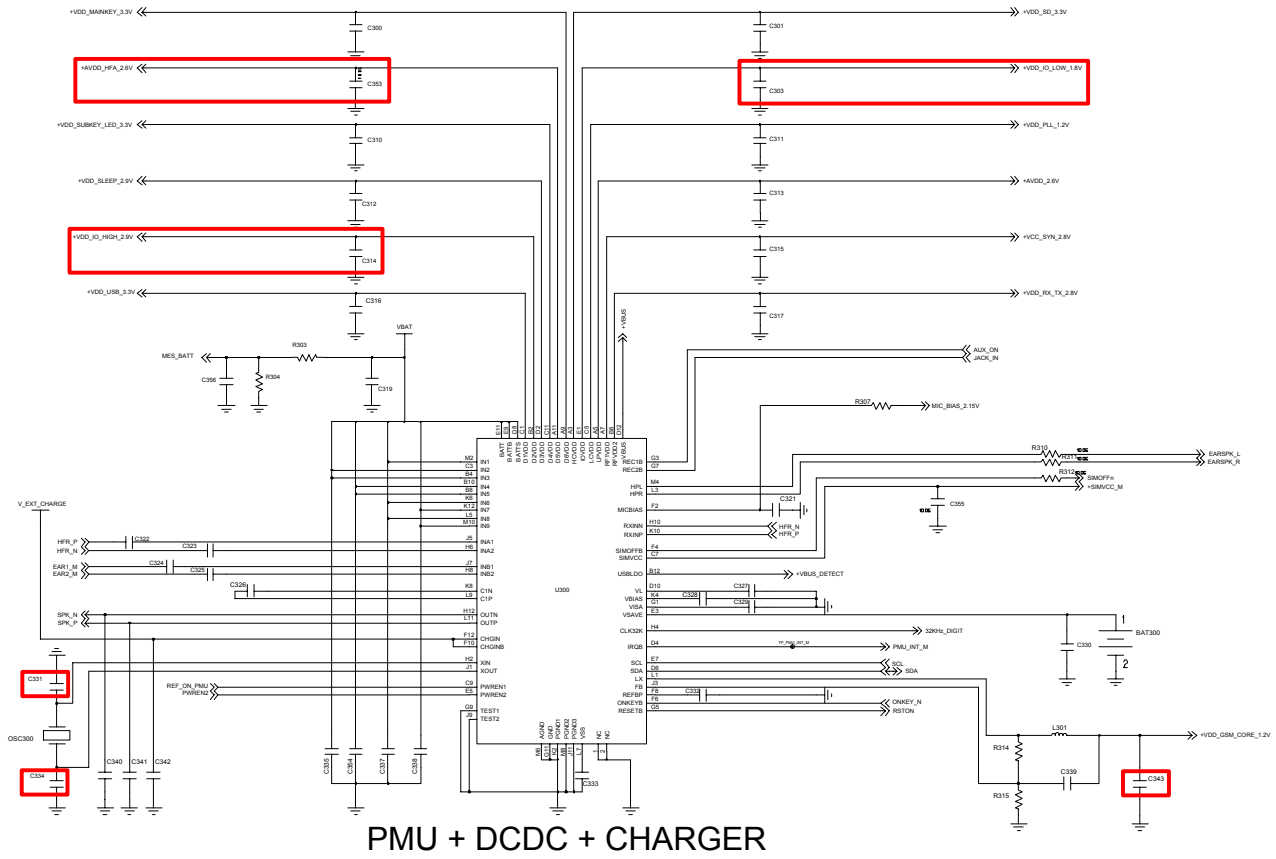
10-1. Baseband

10-1-1. Power ON



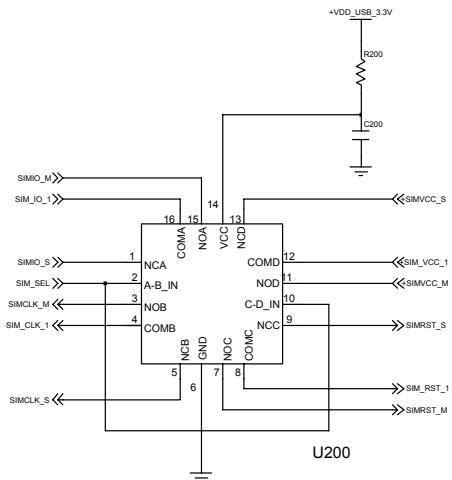
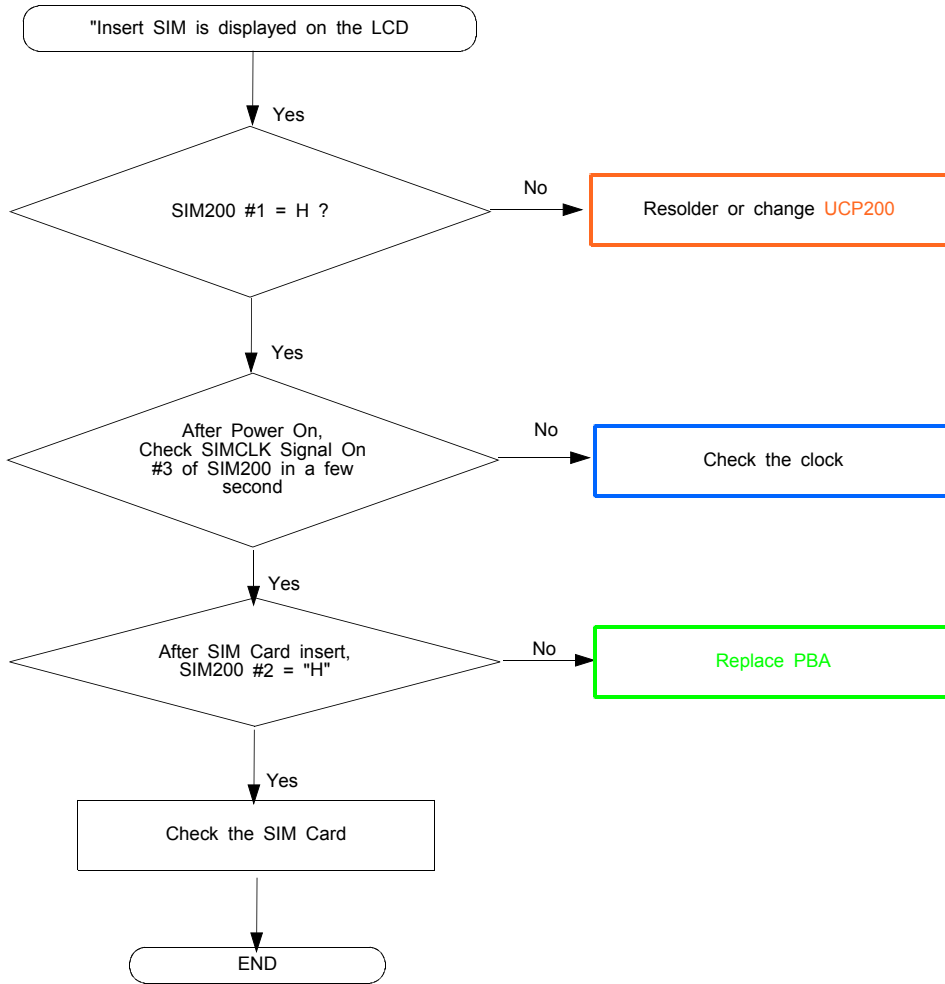
10-1-2. Initial



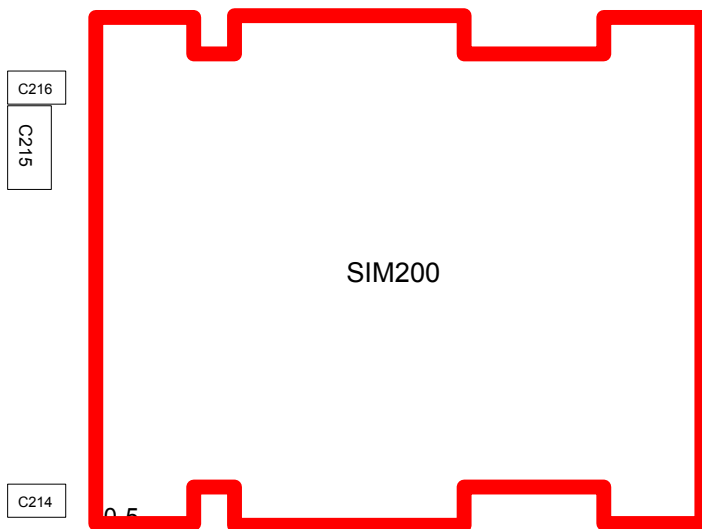


10-1-3. Sim Part

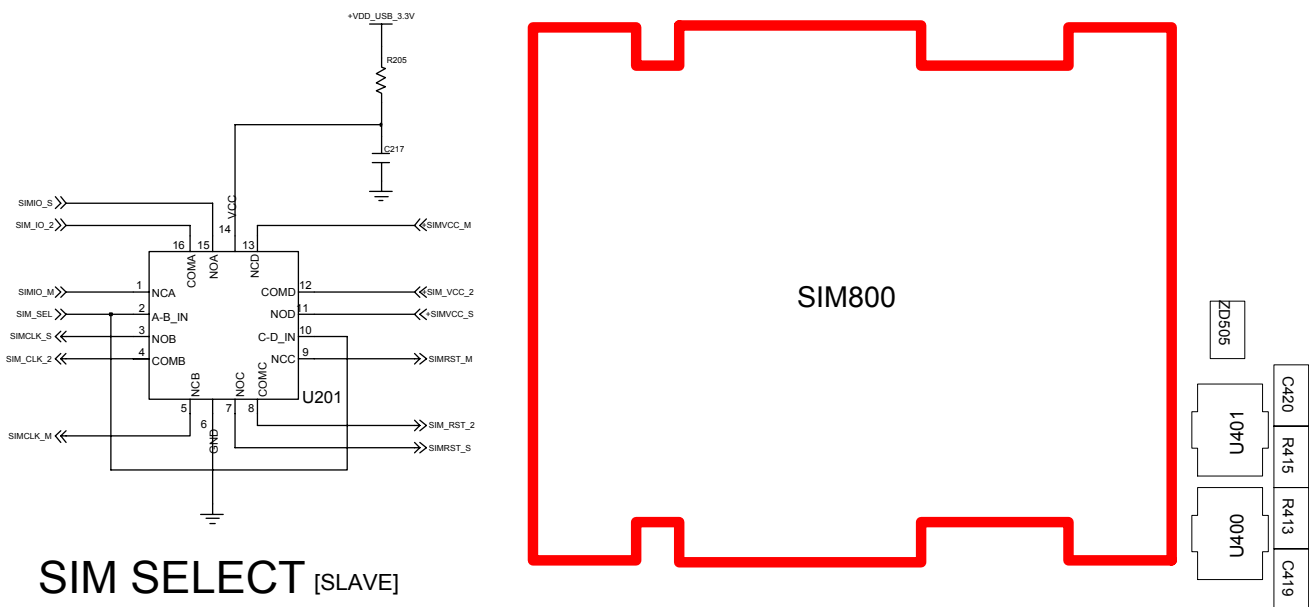
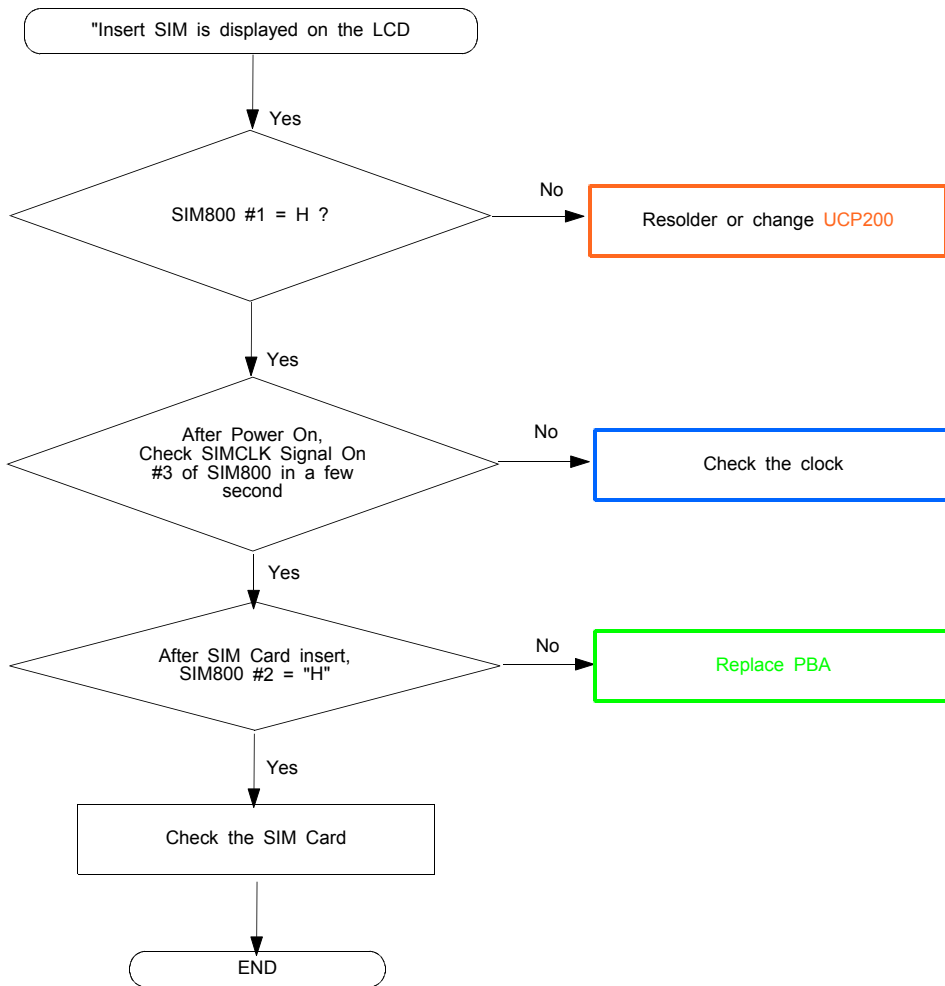
(1) MASTER



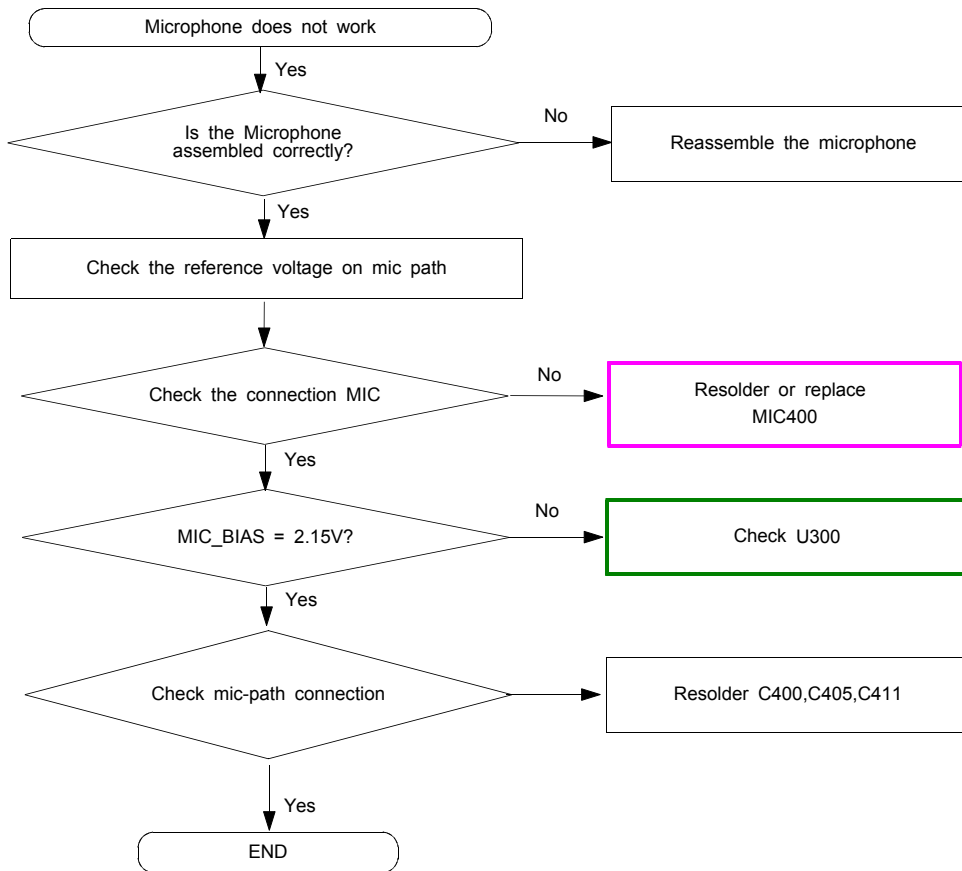
SIM SELECT [MASTER]

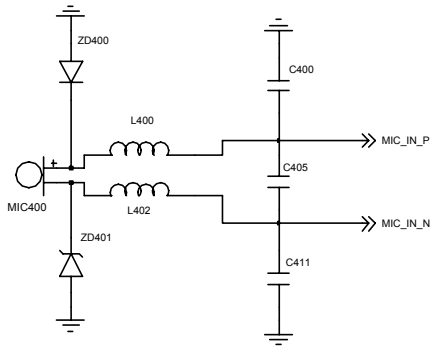


(2) SLAVE

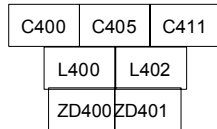
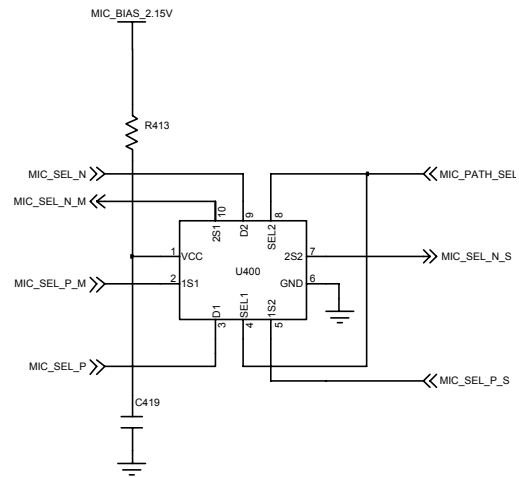
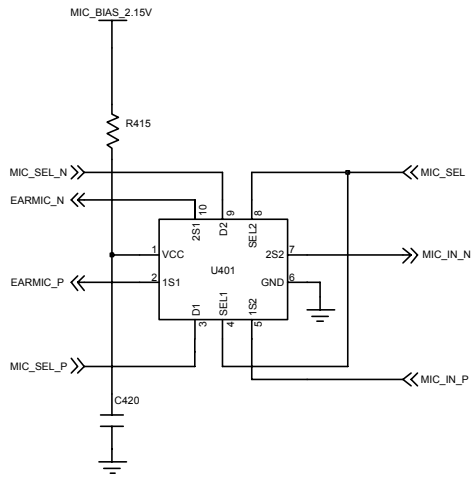
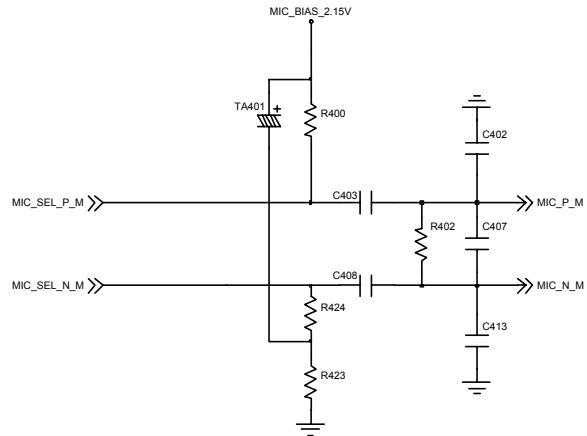


10-1-4. Microphone Part

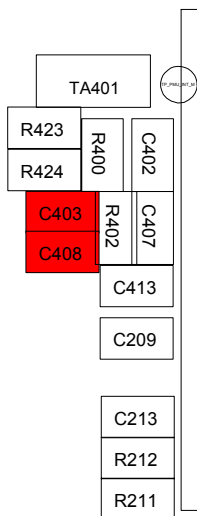




MICROPHONE

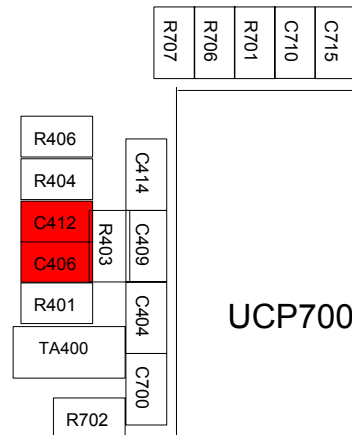


MIC400



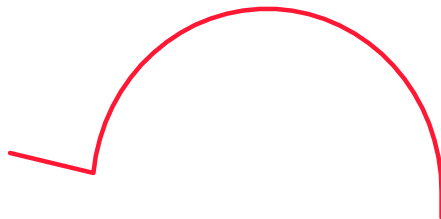
Master MIC path

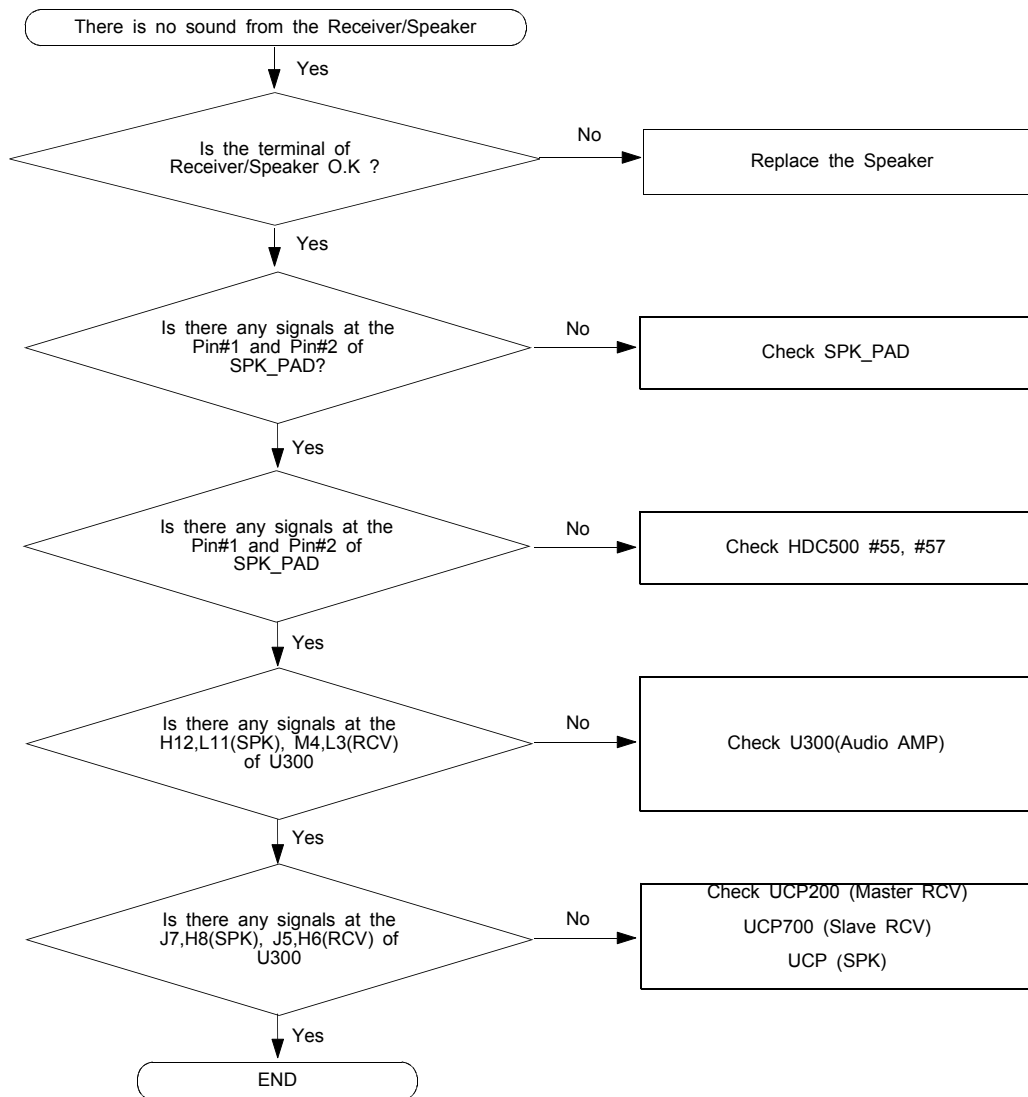
UCP200



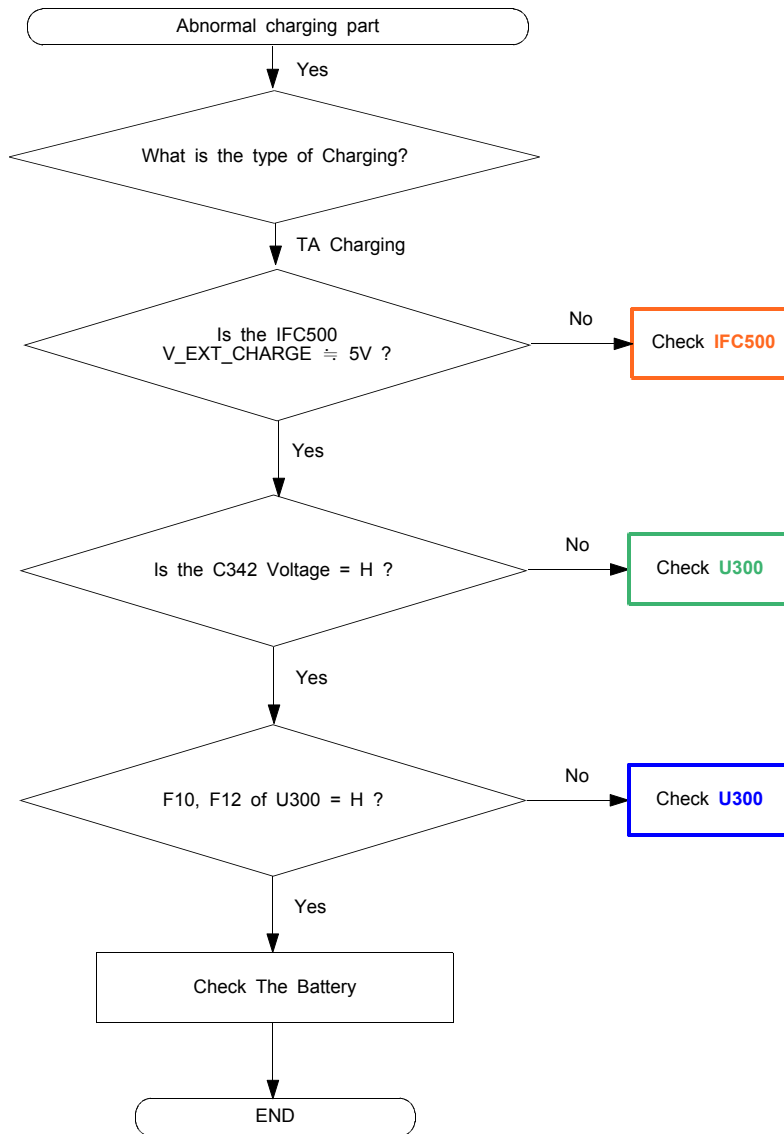
Slave MIC path

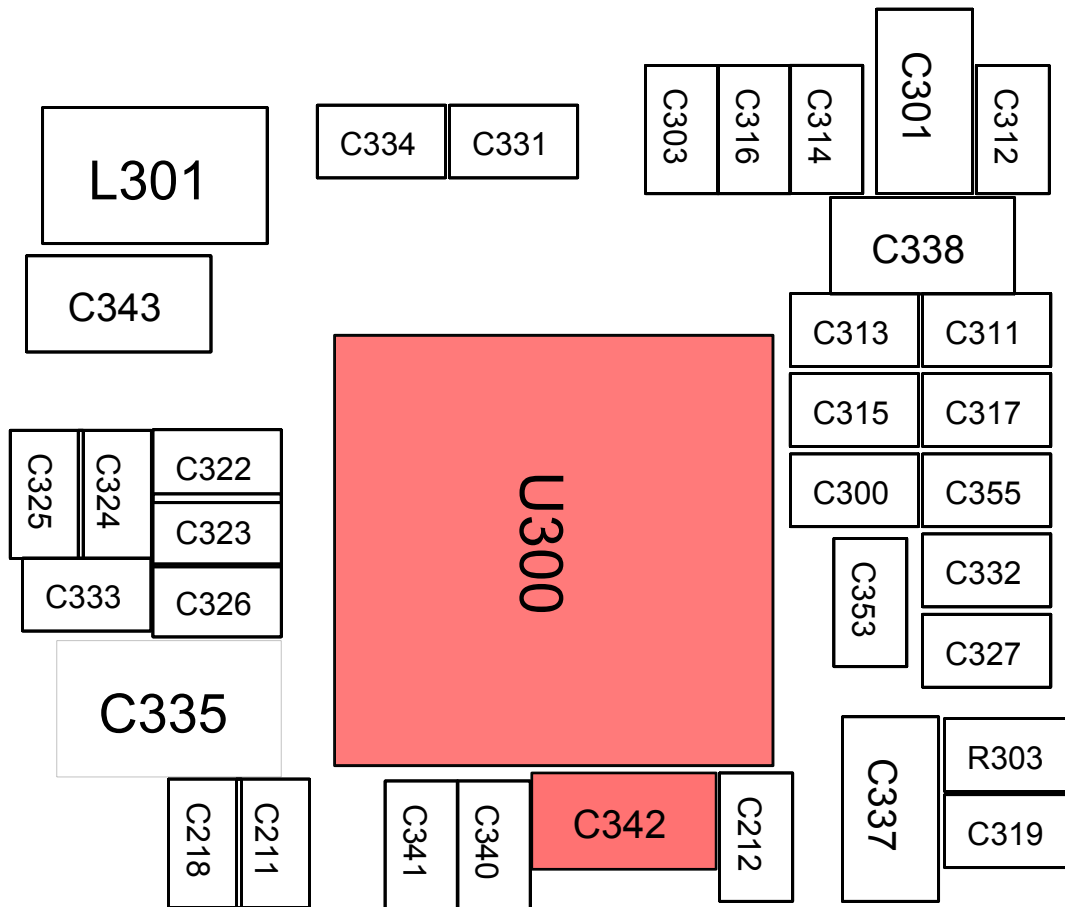
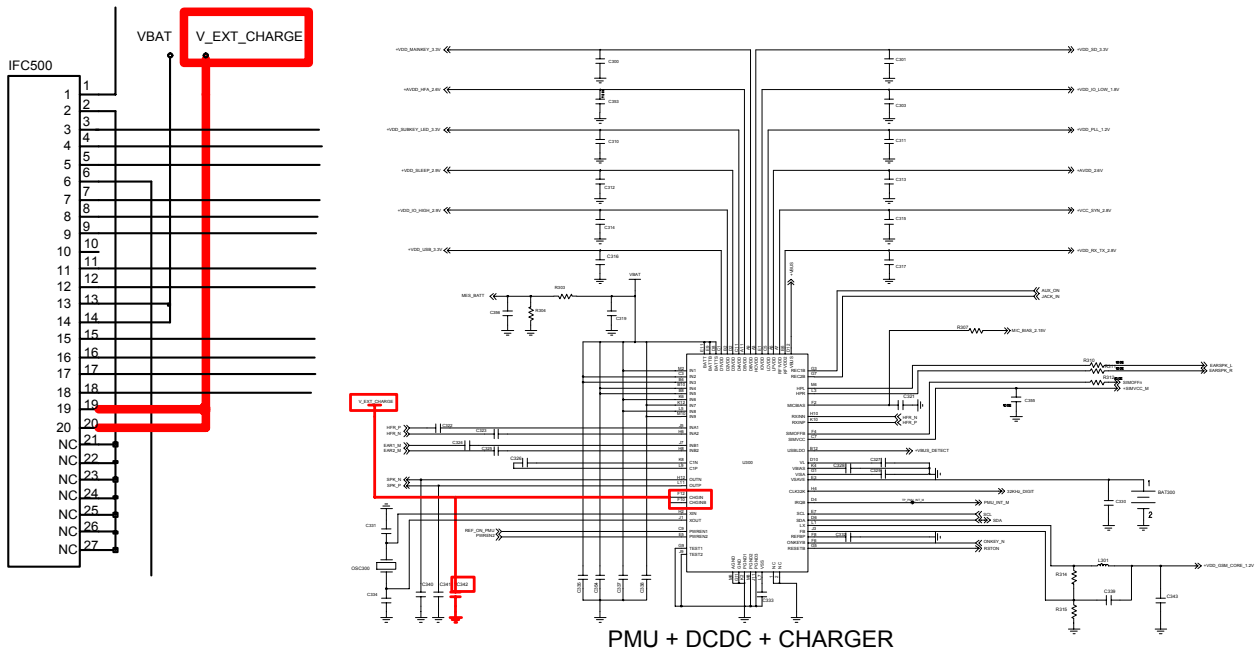
UCP700



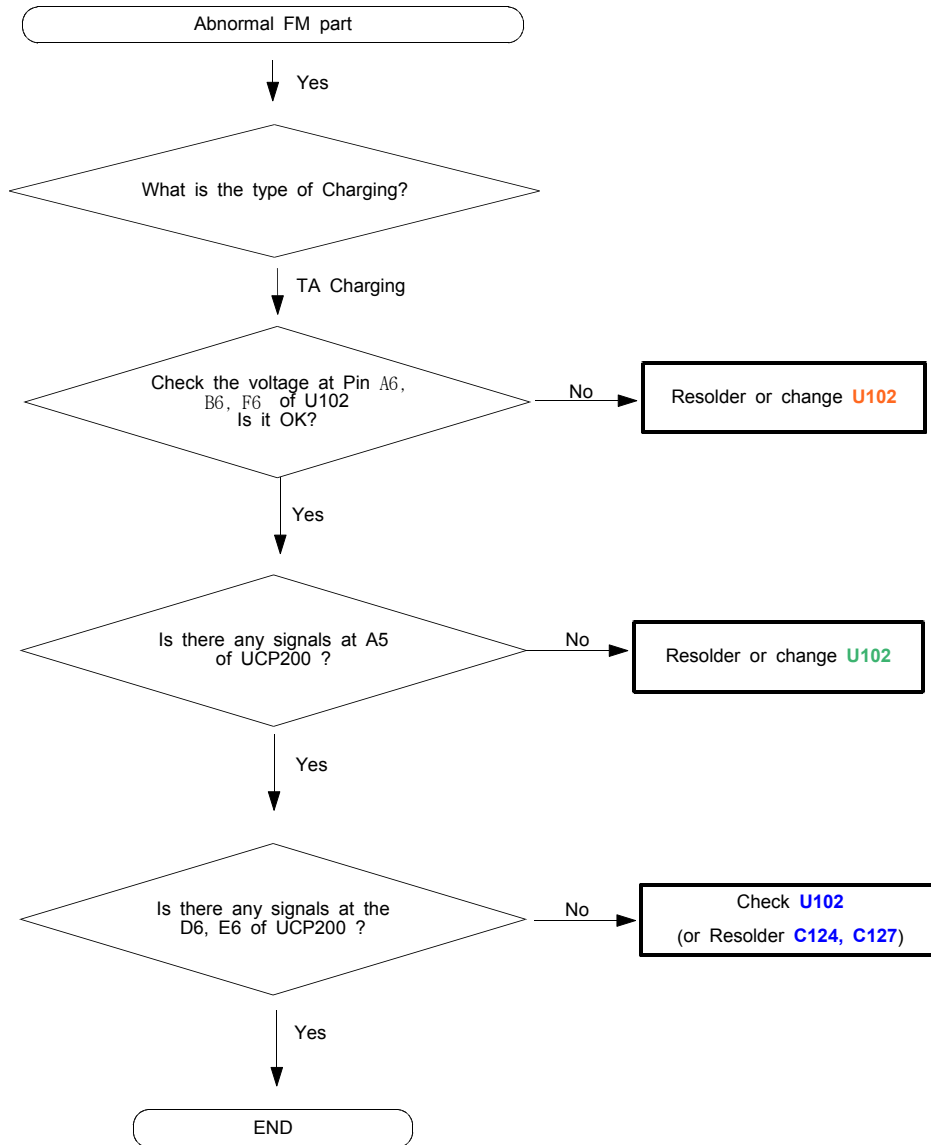
10-1-5. Receiver/Speaker Part

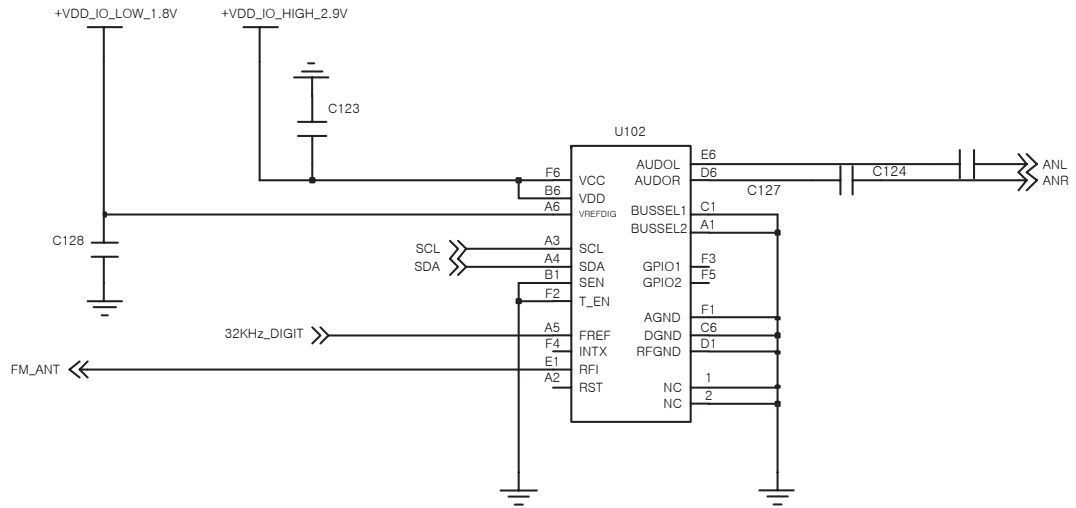
10-1-6. Charging Part



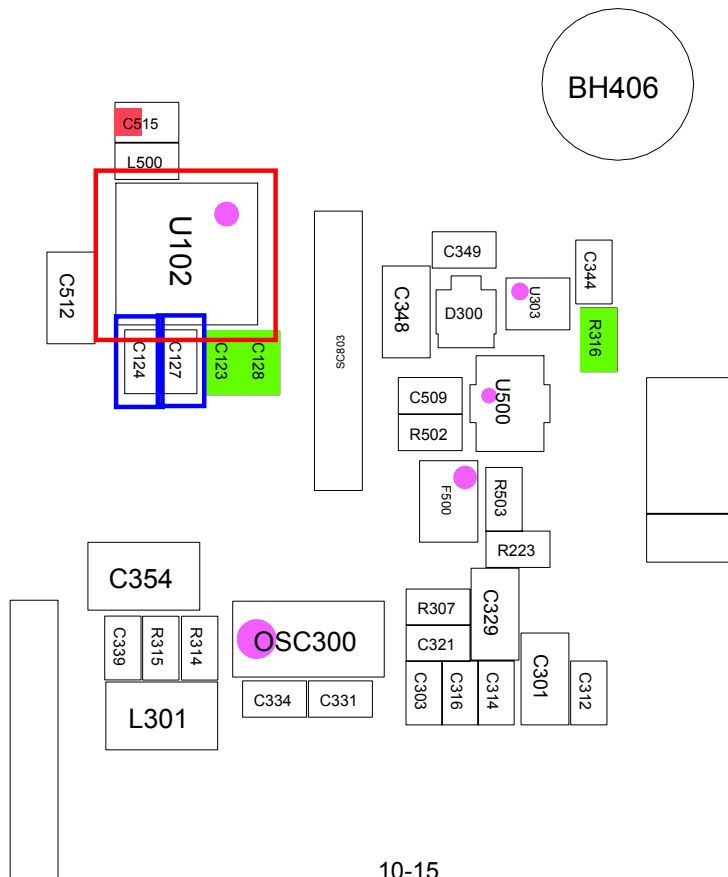


10-1-7. FM Receiver part



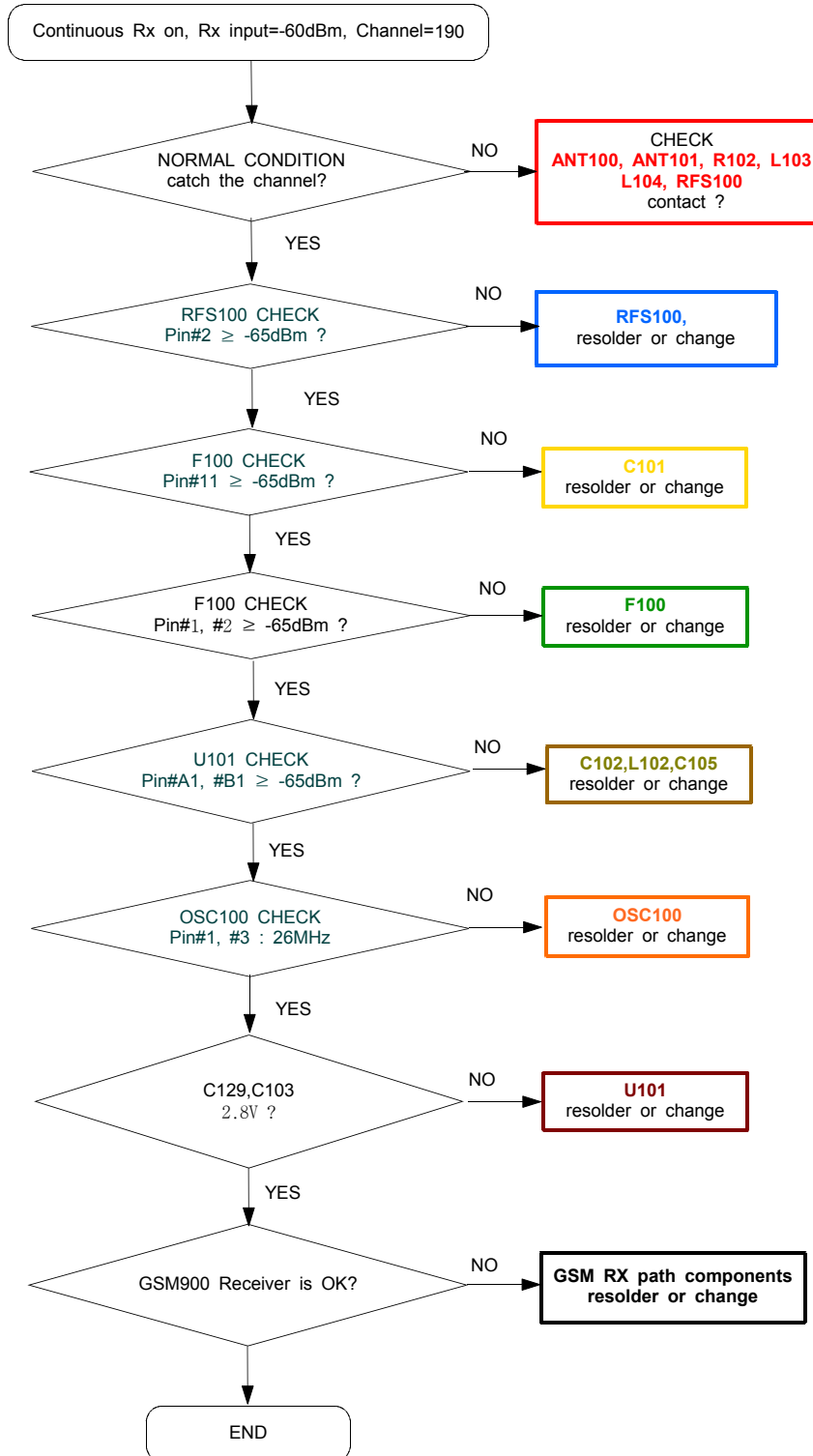


FM RADIO

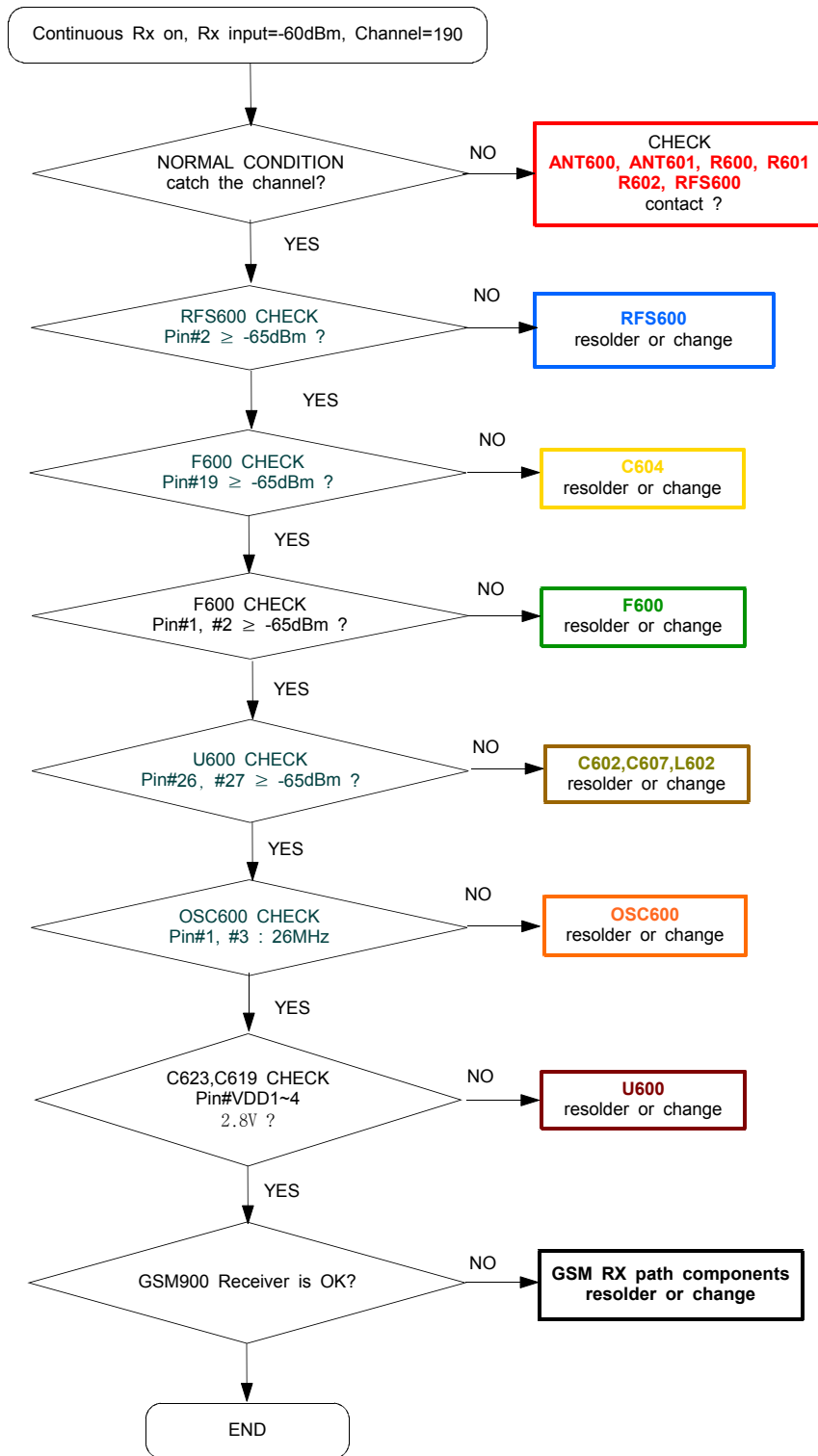


10-2. RF

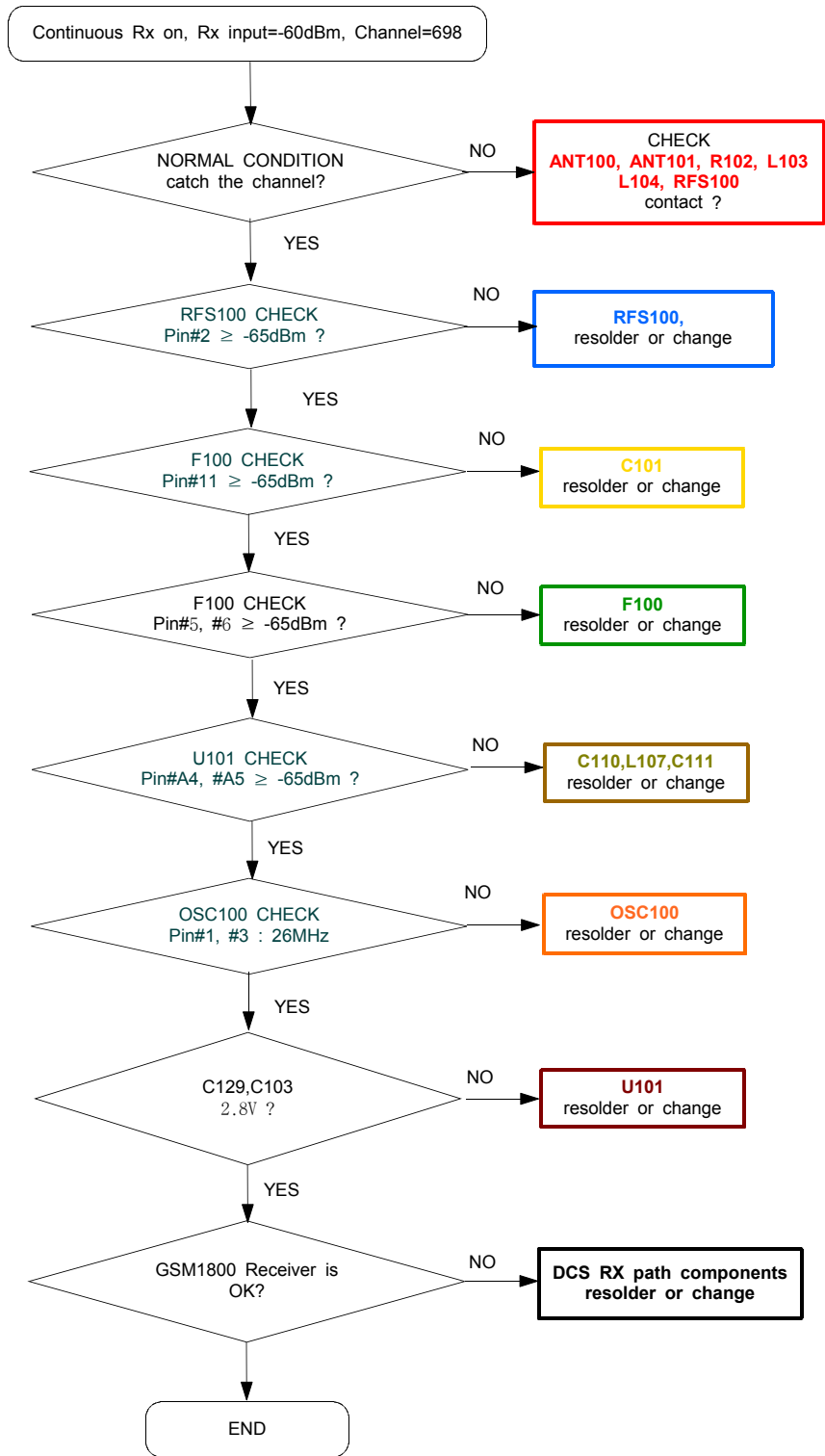
10-2-1. GSM RX- MASTER



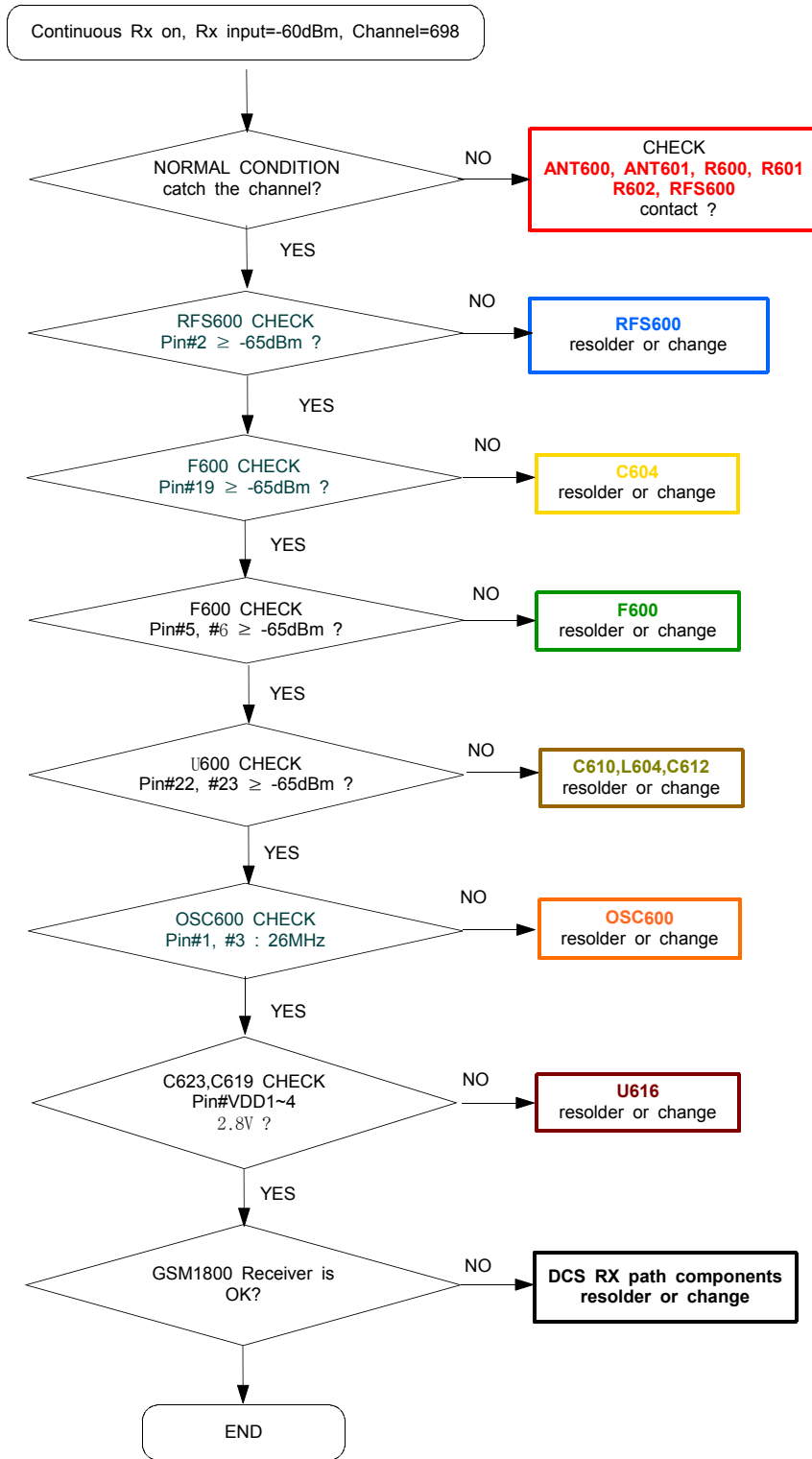
10-2-2. GSM RX- SLAVE



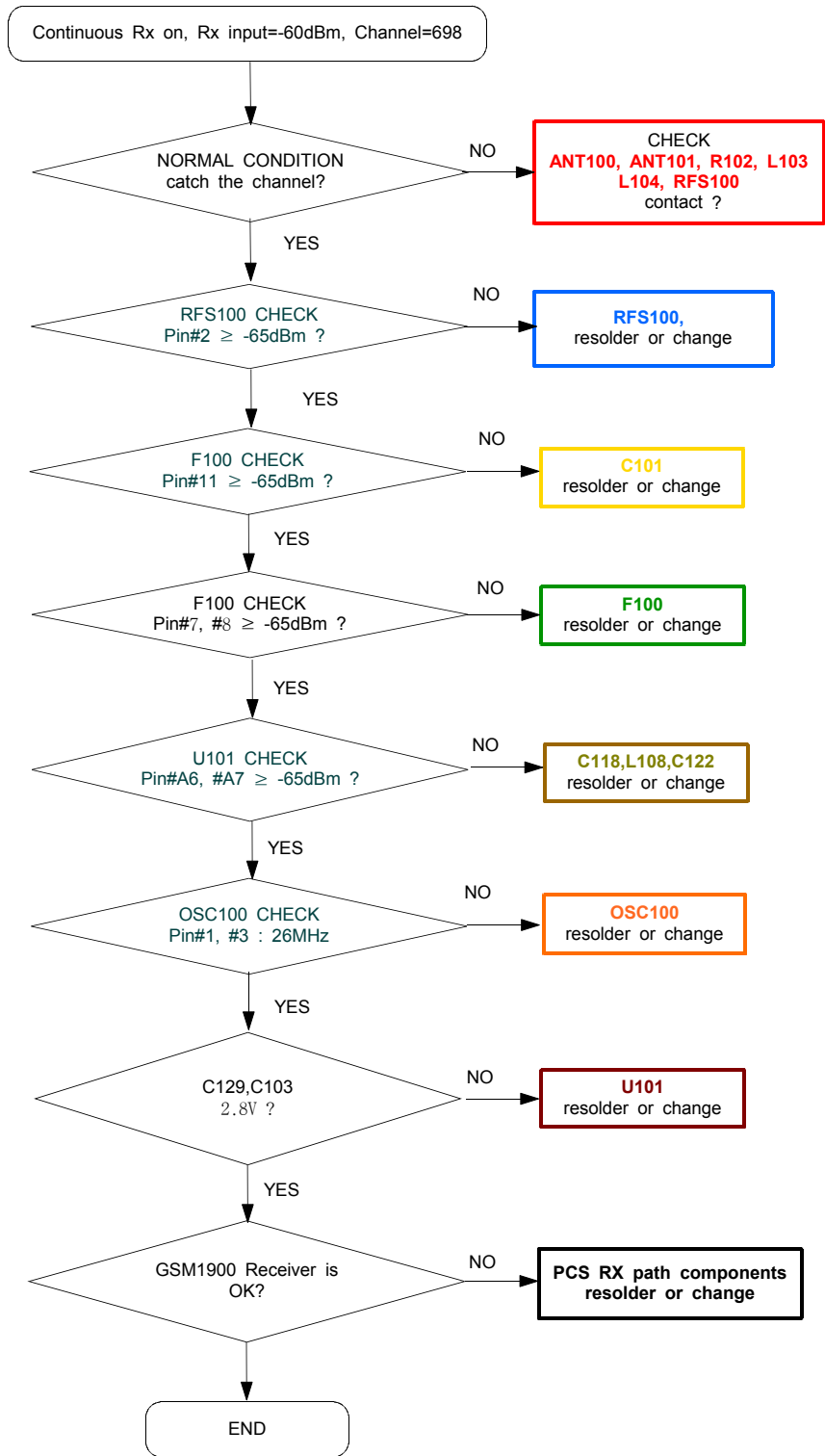
10-2-3. DCS RX- MASTER



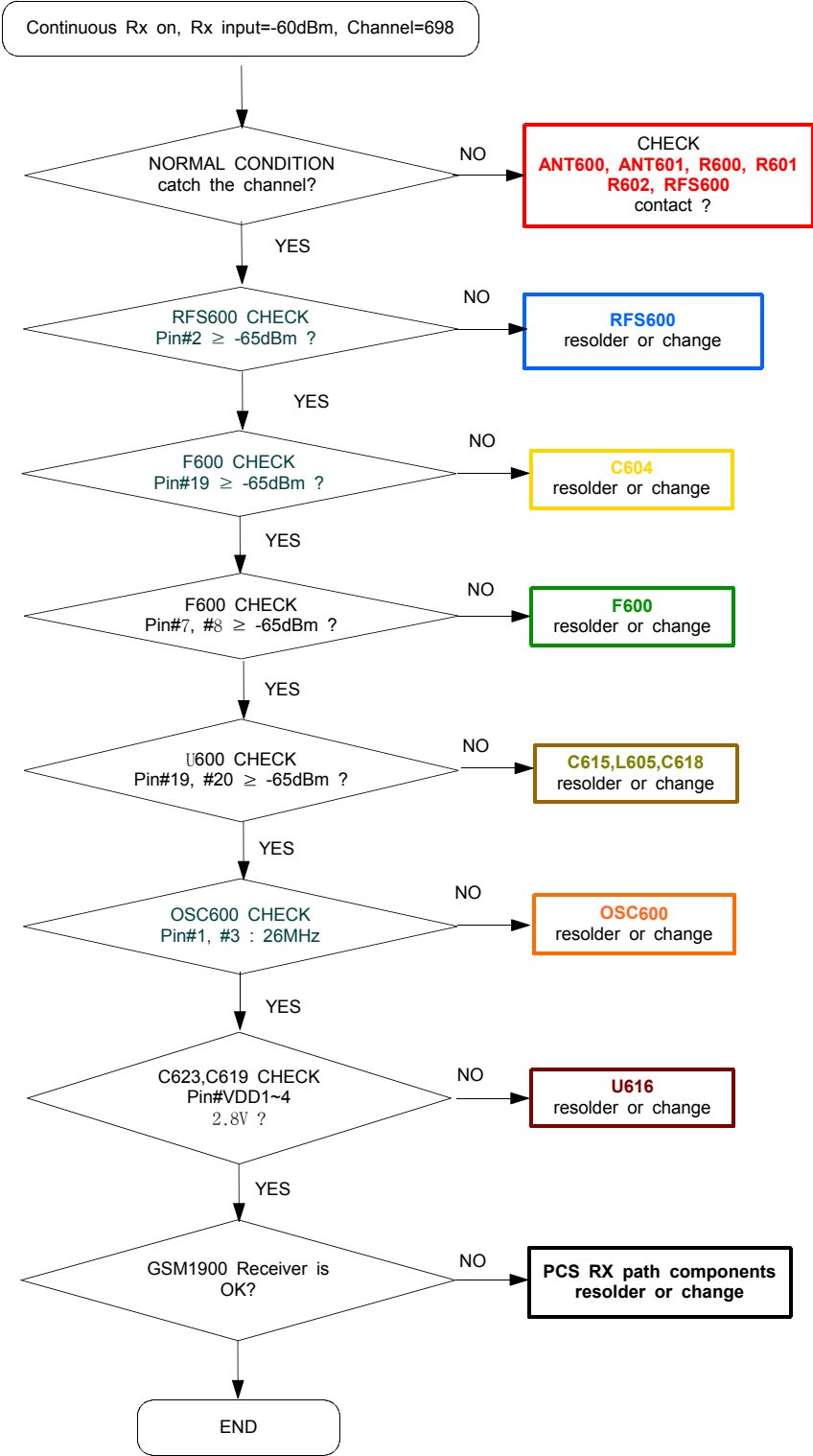
10-2-4. DCS RX- SLAVE



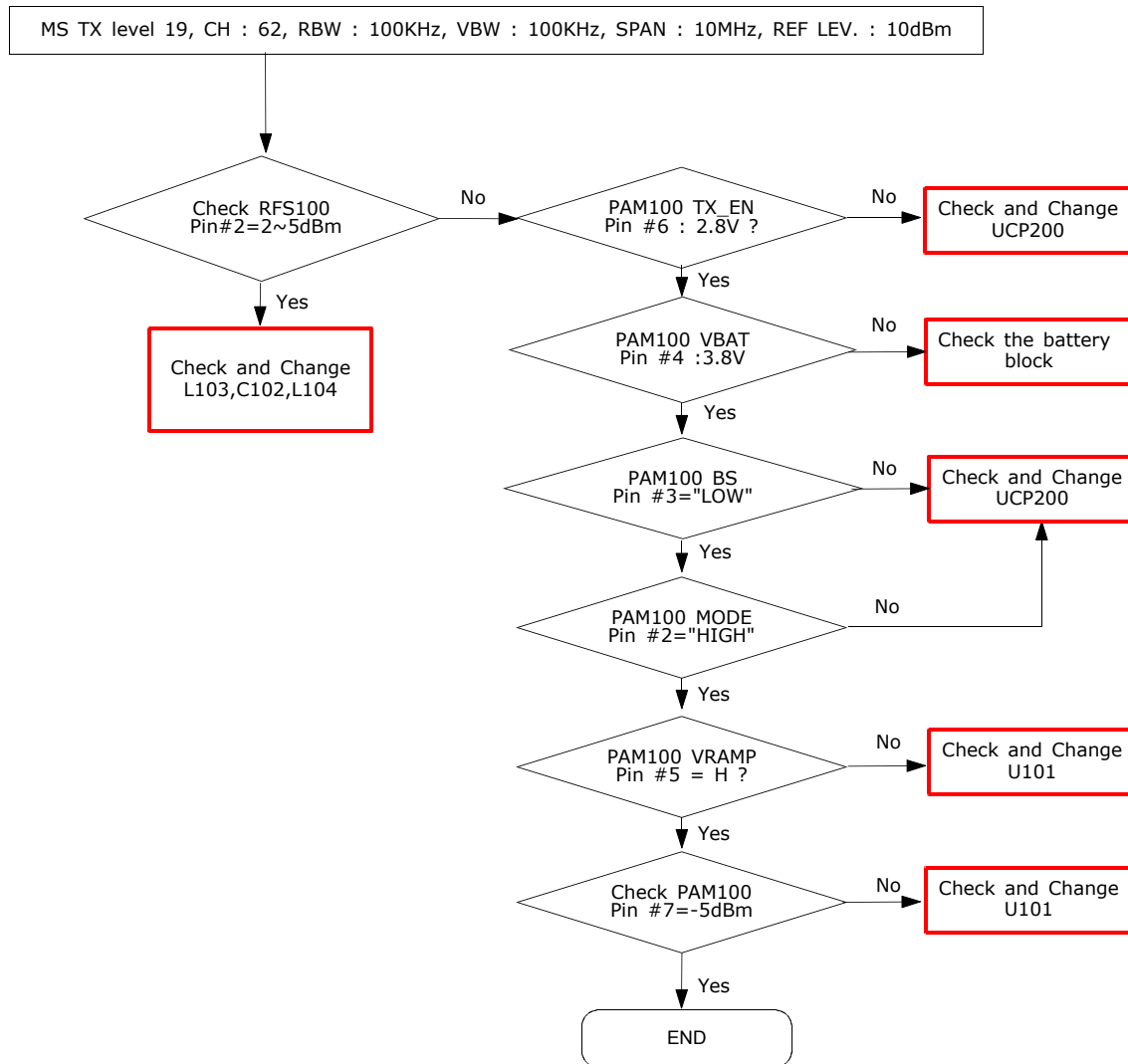
10-2-5. PCS RX- MASTER



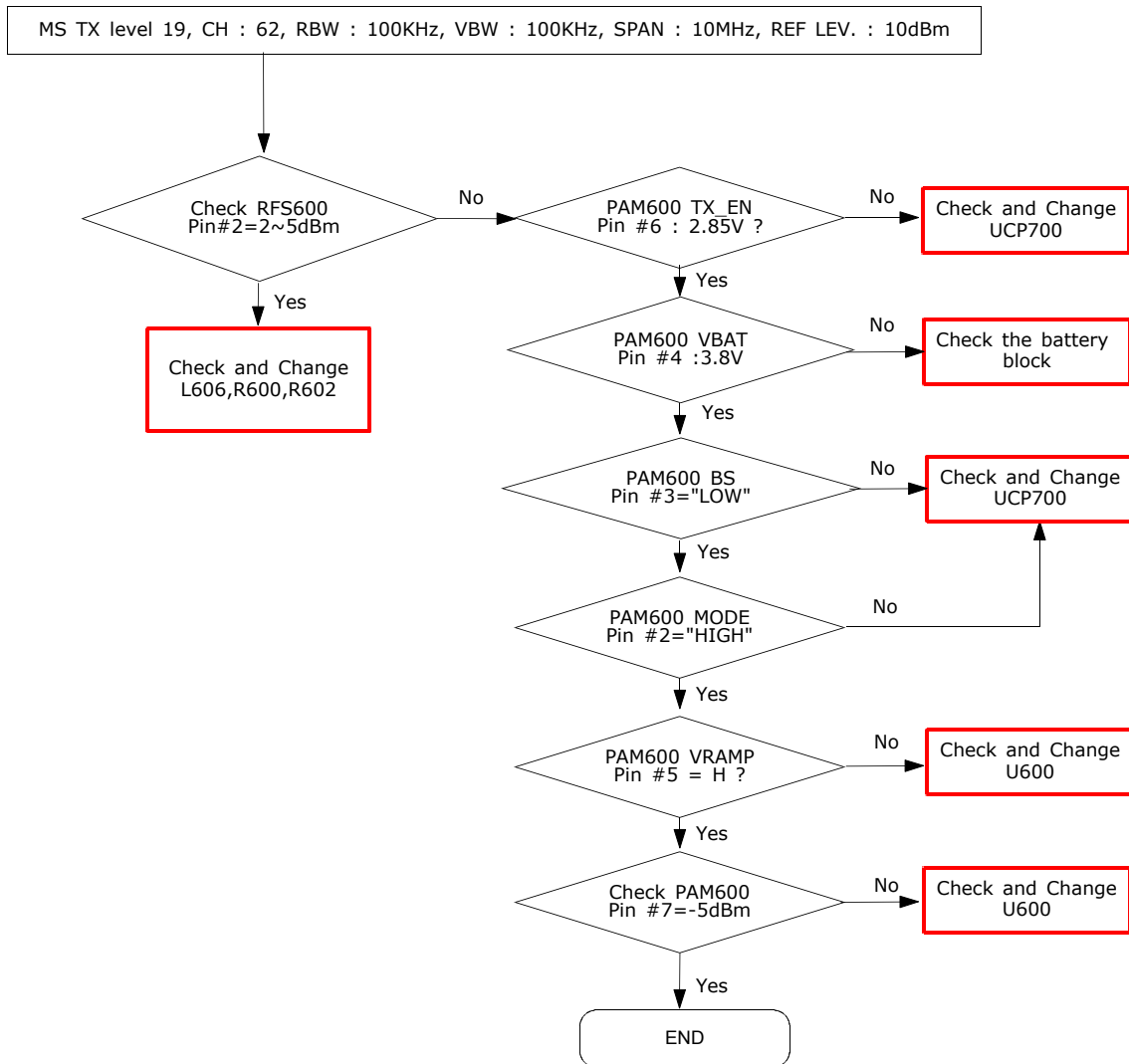
10-2-6. PCS RX- SLAVE



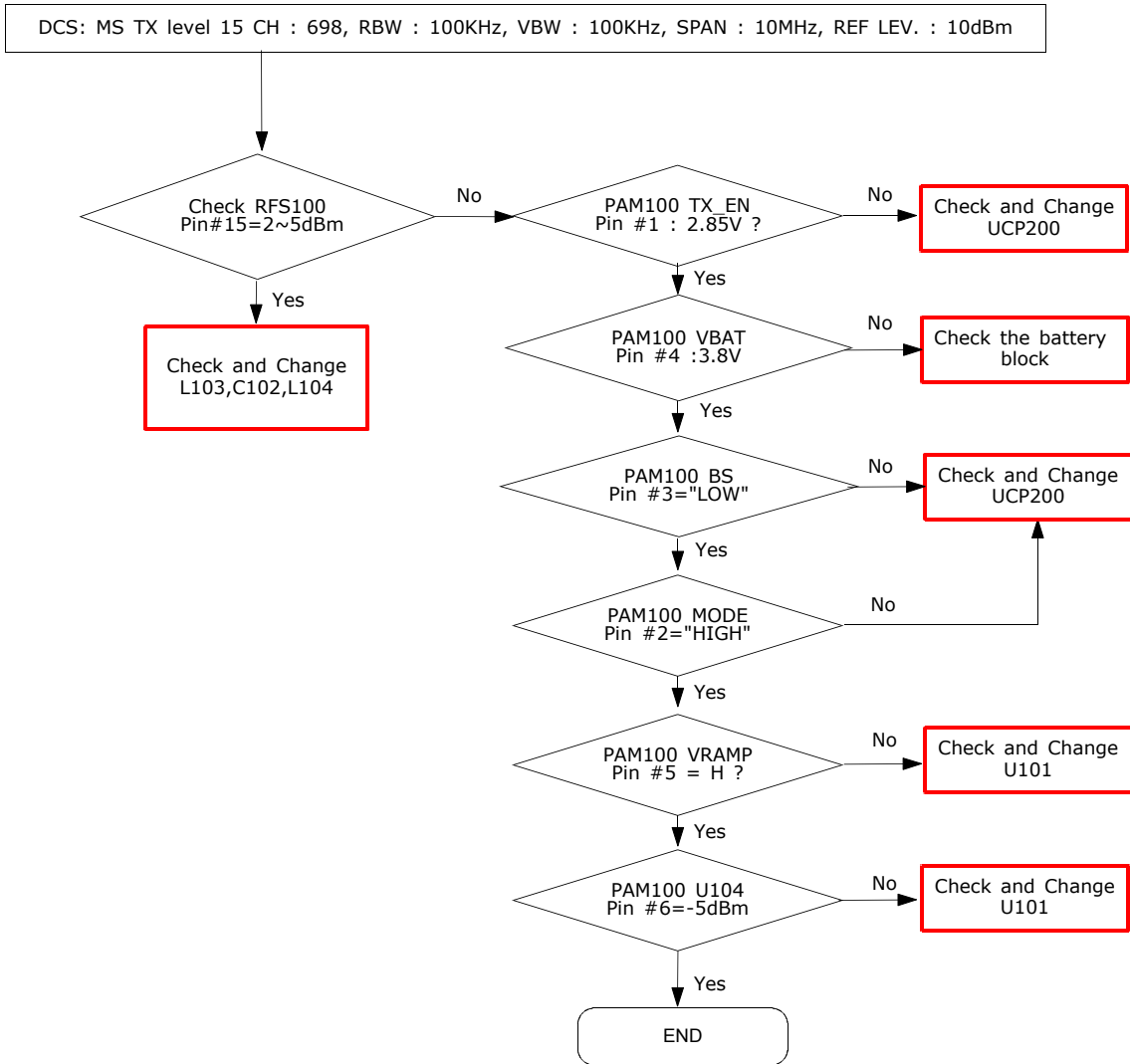
10-2-5. GSM900 TX - MASTER



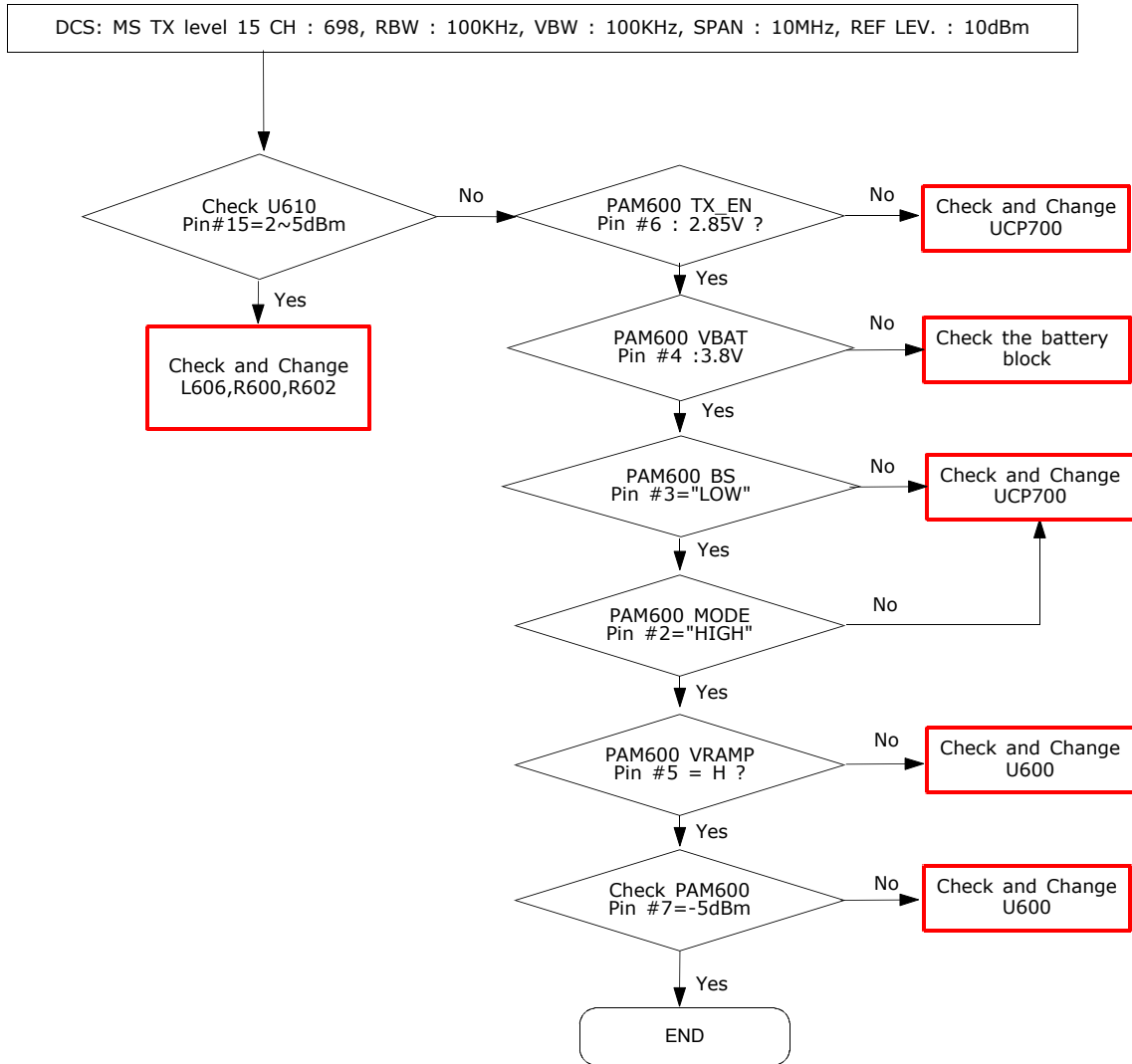
10-2-6. GSM900 TX - SLAVE

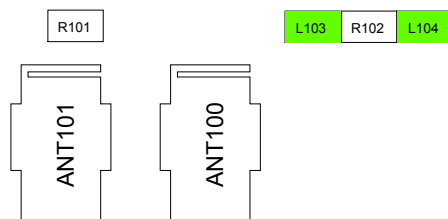
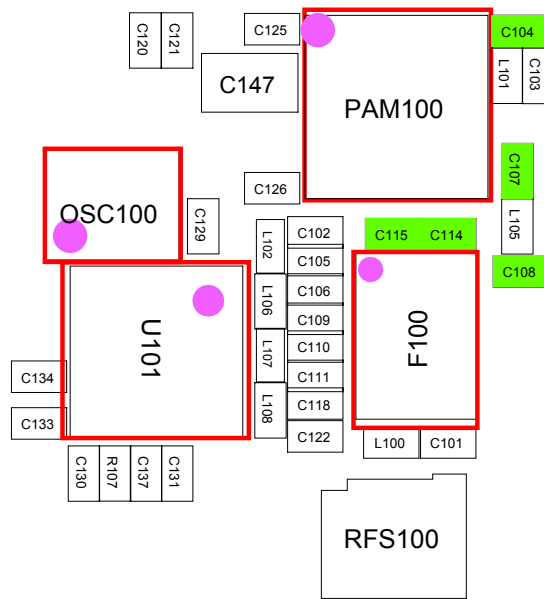
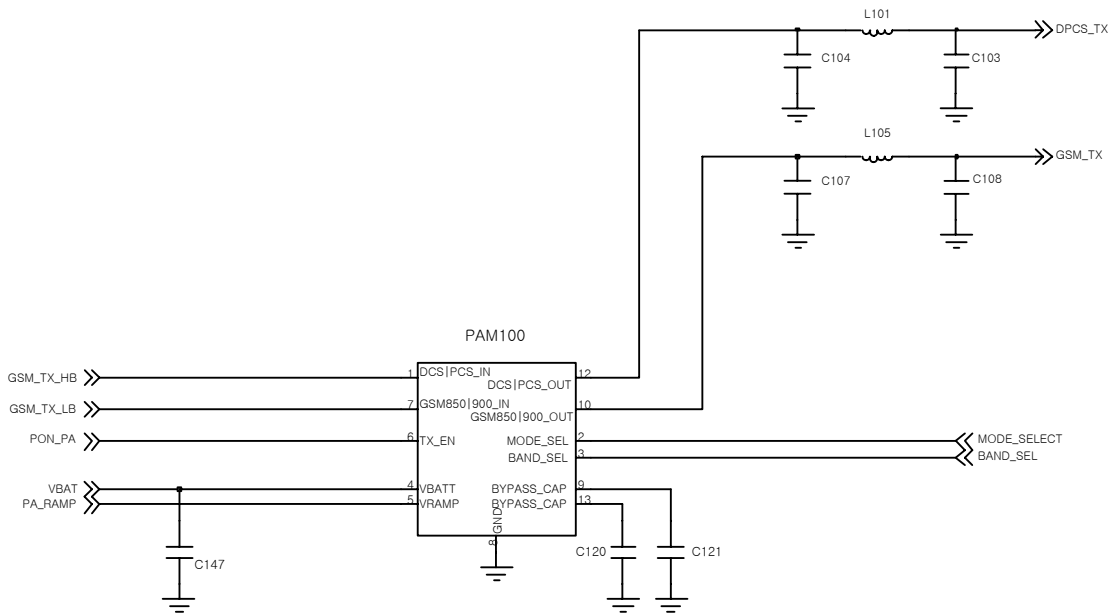


10-2-7. DCS/PCS TX- MASTER

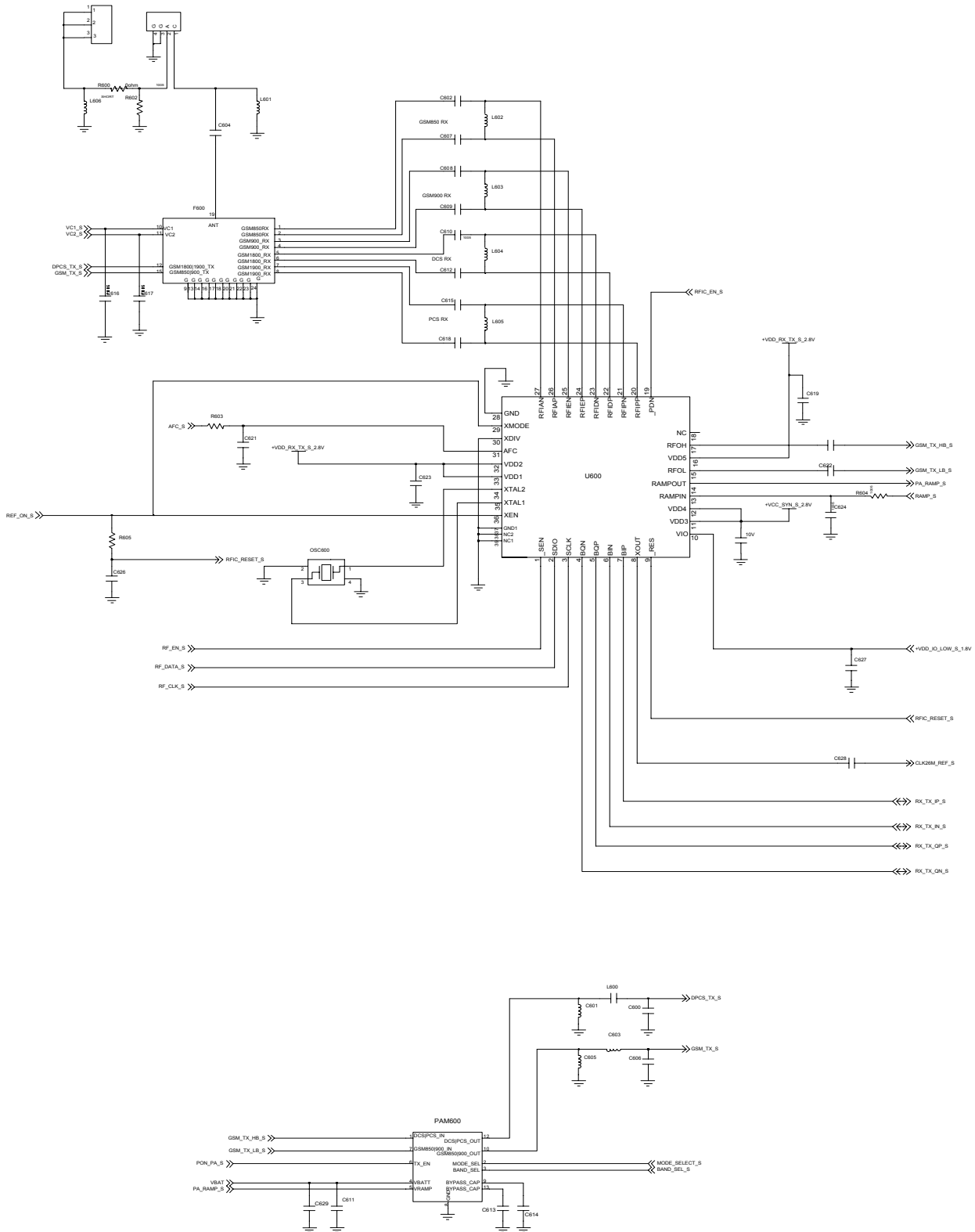


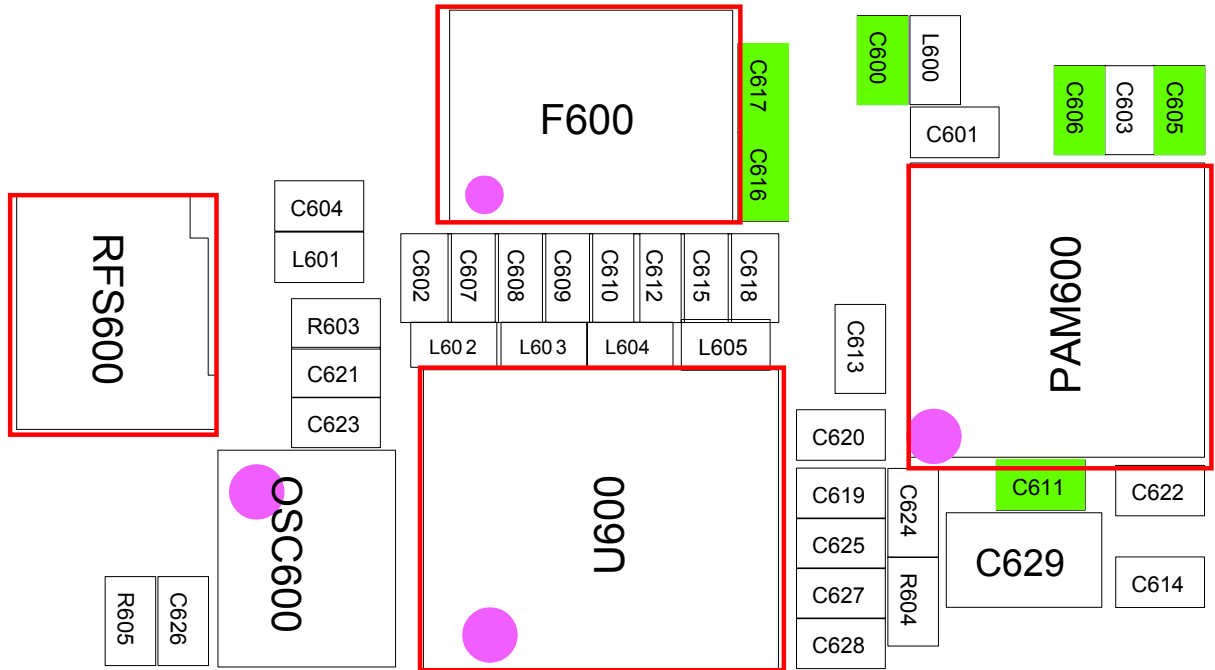
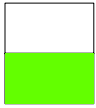
10-2-8. DCS/PCS TX- SLAVE





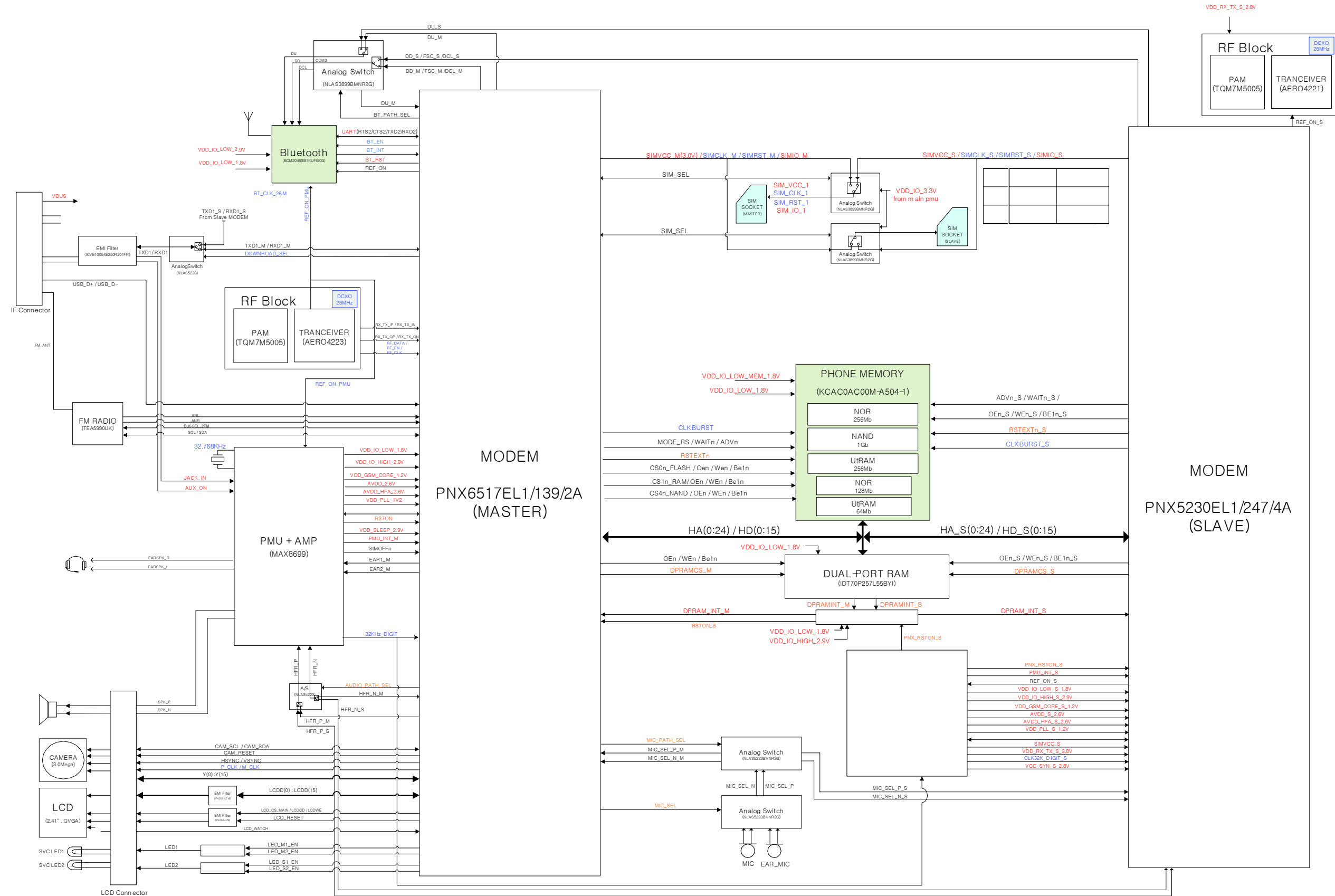
SLAVE RF





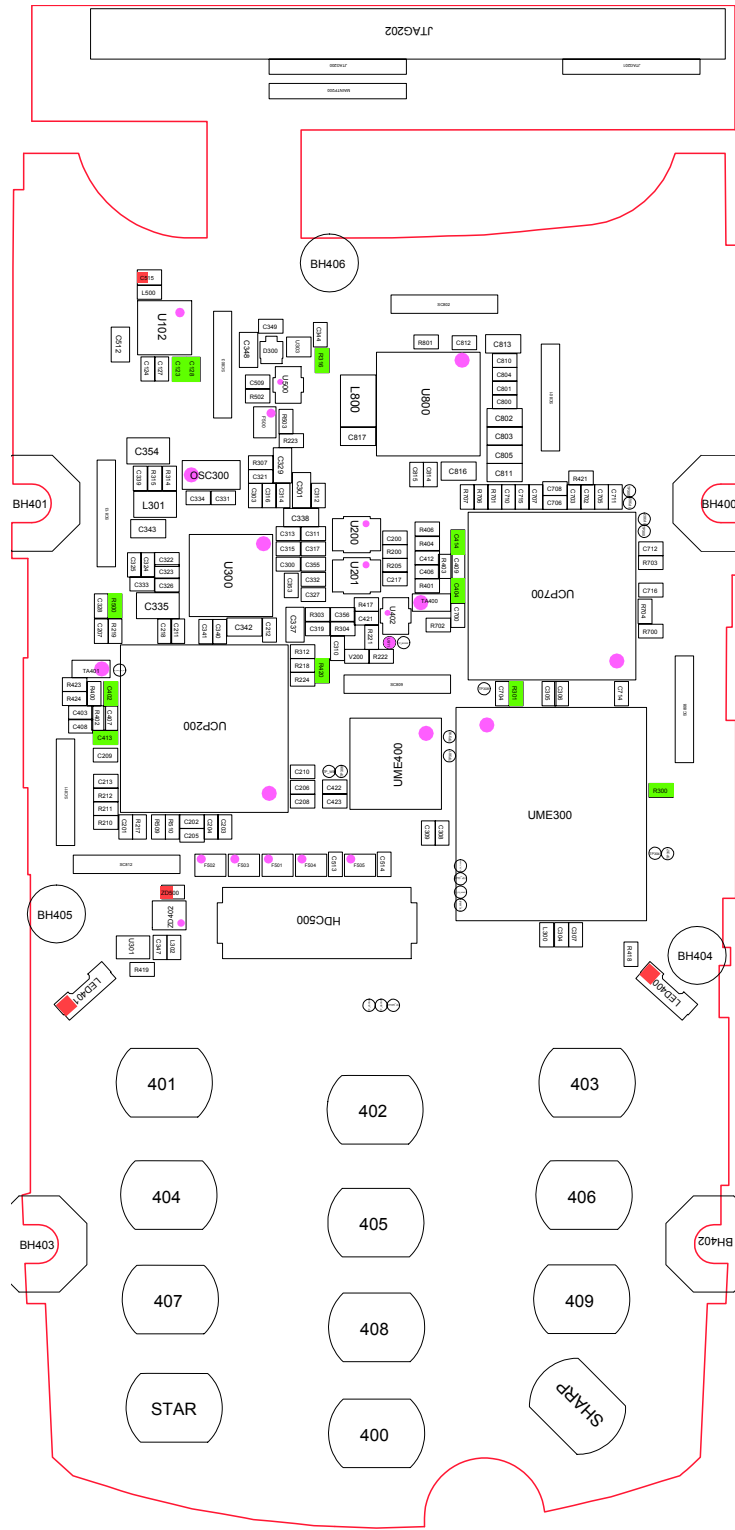
8. Block Diagrams

8-1. Block Diagram



9. PCB Diagrams

[Main top view]



[Main Bottom view]

