

2. Specification

2-1. GSM General Specification

	GSM900	GSM850	DCS1800	PCS1900
Freq. Band[MHz] Uplink/Downlink	880~915 925~960	824.2~848.8 869.2~893.8	1710~1785 1805~1880	1850~1910 1930~1990
ARFCN range	0~124 & 975~1023	128~251	512~885	512~810
Tx/Rx spacing	45MHz	45MHz	95MHz	80MHz
Mod. Bit rate/ Bit Period	270.833kbps 3.692us	270.833kbps 3.692us	270.833kbps 3.692us	270.833kbps 3.692us
Time Slot Period/Frame Period	576.9us 4.615ms	576.9us 4.615ms	576.9us 4.615ms	576.9us 4.615ms
Modulation	0.3GMSK	0.3GMSK	0.3GMSK	0.3GMSK
MS Power	33dBm~5dBm	33dBm~5dBm	30dBm~0dBm	30dBm~0dBm
Power Class	5pcl ~ 19pcl	5pcl ~ 19pcl	0pcl ~ 15pcl	0pcl ~ 15pcl
Sensitivity	-102dBm	-102dBm	-100dBm	-100dBm
TDMA Mux	8	8	8	8
Cell Radius	35Km	35Km	2Km	-

2-2. GSM Tx Power Class

TX Power control level	GSM850 GSM900	TX Power control level	DCS1800	TX Power control level	PCS1900
5	33±3 dBm	0	30±3 dBm	0	30±3 dBm
6	31±3 dBm	1	28±3 dBm	1	28±3 dBm
7	29±3 dBm	2	26±3 dBm	2	26±3 dBm
8	27±3 dBm	3	24±3 dBm	3	24±3 dBm
9	25±3 dBm	4	22±3 dBm	4	22±3 dBm
10	23±3 dBm	5	20±3 dBm	5	20±3 dBm
11	21±3 dBm	6	18±3 dBm	6	18±3 dBm
12	19±3 dBm	7	16±3 dBm	7	16±3 dBm
13	17±3 dBm	8	14±3 dBm	8	14±3 dBm
14	15±3 dBm	9	12±4 dBm	9	12±4 dBm
15	13±3 dBm	10	10±4 dBm	10	10±4 dBm
16	11±5 dBm	11	8±4dBm	11	8±4dBm
17	9±5 dBm	12	6±4 dBm	12	6±4 dBm
18	7±5 dBm	13	4±4 dBm	13	4±4 dBm
19	5±5 dBm	14	2±5 dBm	14	2±5 dBm
		15	0±5 dBm	15	0±5 dBm

2-3. GSM EDGE TX power class

Only in Master

TX Power control level	GSM900 GSM850	TX Power control level	DCS1800	TX Power control level	PCS1900
8	27±3 dBm	2	26±3 dBm	2	26±3 dBm
9	25±3 dBm	3	24±3 dBm	3	24±3 dBm
10	23±3 dBm	4	22±3 dBm	4	22±3 dBm
11	21±3 dBm	5	20±3 dBm	5	20±3 dBm
12	19±3 dBm	6	18±3 dBm	6	18±3 dBm
13	17±3 dBm	7	16±3 dBm	7	16±3 dBm
14	15±3 dBm	8	12±3 dBm	8	12±3 dBm
15	13±3 dBm	9	10±3 dBm	9	10±3 dBm
16	11±5 dBm	10	14±3 dBm	10	14±3 dBm
17	9±5 dBm	11	12±4 dBm	11	12±4 dBm
18	7±5 dBm	12	10±4 dBm	12	10±4 dBm
19	5±5 dBm	13	8±4dBm	13	8±4dBm
		14	6±4 dBm	14	6±4 dBm
		15	4±4 dBm	15	4±4 dBm

3. Product Function

Main Function

- GSM850+GSM900+DCS1800+PCS1900
- E-GSM, GPRS, EDGE
- Dual Standby (Dual TX, Dual RX)
- 2.4" 262K 240*320 TFT LCD
- 3M Auto Focus Camera
- Bluetooth V.2.1+EDR
- Stereo Bluetooth Headset
- Music player
- MP3, AAC, MP4, 3GPP Decoding
- SMS/MMS/E-Mail
- FM Radio & Recording
- Wap 2.0
- Java Games

4. Array course control

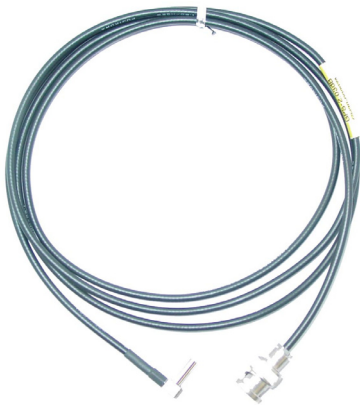
4-1. Software Downloading



Test Jig (GH99-36900A)



Test Cable (GH39-01160A)



RF Test Cable (GH39-00985A)



Adapter (GH99-38251A)

4-2. Software Downloading

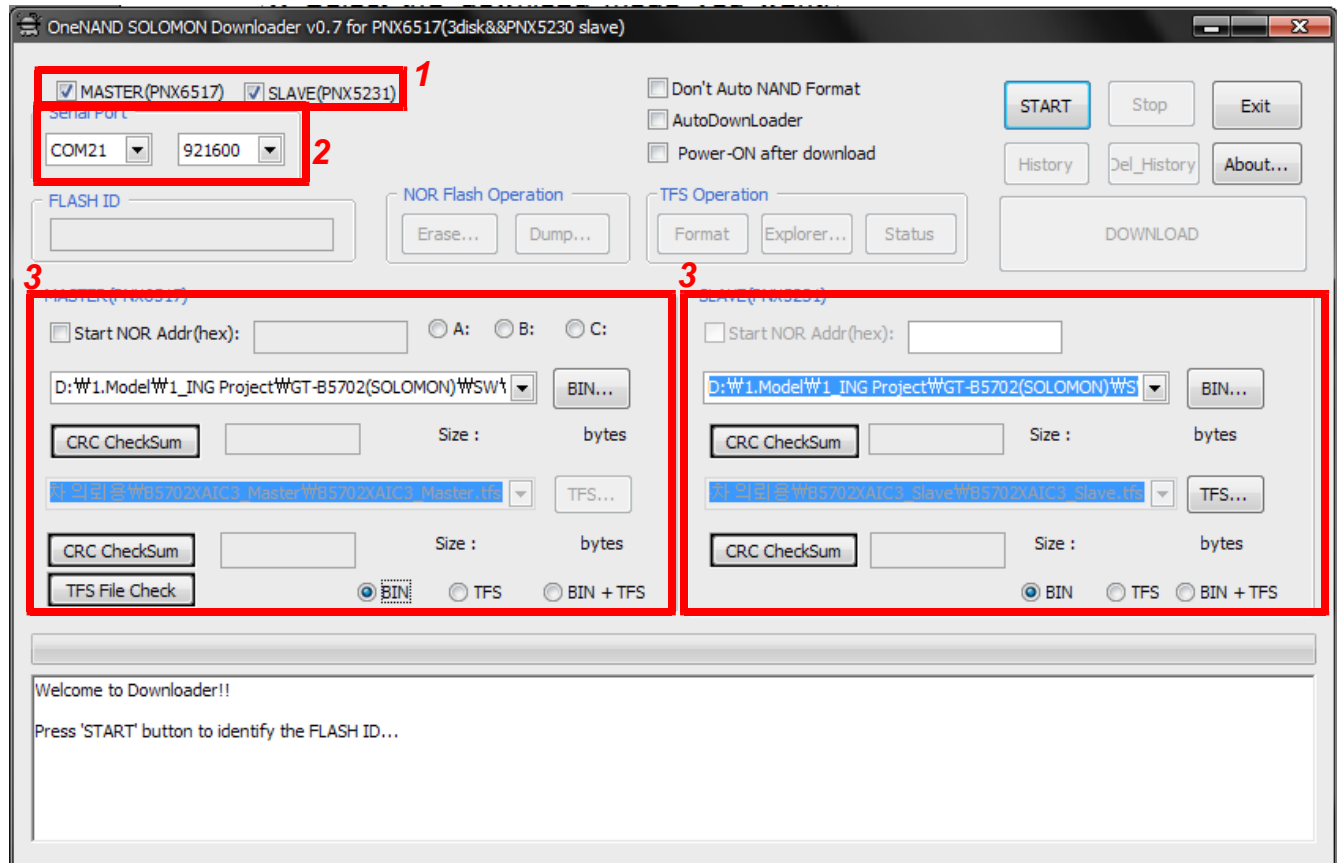
4-2-1. Pre-requisite for Downloading

- Downloader Program ([OneNAND SOLOMON Downloader v0.7](#))
- B5702 Mobile Phone
- Data Cable
- Binary File, TFS file

4-2-2. S/W Downloader Program

■ Load the binary download program by executing the “[OneNAND SOLOMON Downloader v0.7](#)”

1. Select the download mode you want.
 - if Master mode wanted, check [MASTER](#)
 - if Slave mode wanted, check [SLAVE](#)
2. Select the connected serial [Port](#) and the [Rate of speed](#)
3. Select the check box, the mode you want to download.
 - if the binary file wanted, check only '[BIN](#)'
 - if the tfs file wanted, check only '[TFS](#)'
 - if all the files wanted, check '[BIN+TFS](#)'



4. Select the file(s) what you want to download
 - if you select [MASTER](#), select the file "[B5712_Master.ooo](#)"
 - if you select [SLAVE](#), select the file "[B5712_Slave.ooo](#)"

11. Reference data

Reference Abbreviate

- **AAC**: Advanced Audio Coding.
- **AVC** : Advanced Video Coding.
- **BER** : Bit Error Rate
- **BPSK**: Binary Phase Shift Keying
- **CA** : Conditional Access
- **CDM** : Code Division Multiplexing
- **C/I** : Carrier to Interference
- **DMB** : Digital Multimedia Broadcasting
- **EN** : European Standard
- **ES** : Elementary Stream
- **ETSI**: European Telecommunications Standards Institute
- **MPEG**: Moving Picture Experts Group
- **PN** : Pseudo-random Noise
- **PS** : Pilot Symbol
- **QPSK**: Quadrature Phase Shift Keying
- **RS** : Reed-Solomon
- **SI** : Service Information
- **TDM** : Time Division Multiplexing
- **TS** : Transport Stream

1. Safety Precautions

1-1. Repair Precaution

- Repair in Shield Box, during detailed tuning.
Take specially care of tuning or test,
because specipcty of cellular phone is sensitive for surrounding interference(RF noise).
- Be careful to use a kind of magnetic object or tool,
because performance of parts is damaged by the influence of manetic force.
- Surely use a standard screwdriver when you disassemble this product,
otherwise screw will be worn away.
- Use a thicken twisted wire when you measure level.
A thicken twisted wire has low resistance, therefore error of measurement is few.
- Repair after separate Test Pack and Set because for short danger (for example an
overcurrent and furious flames of parts etc) when you repair board in condition of
connecting Test Pack and tuning on.
- Take specially care of soldering, because Land of PCB is small and weak in heat.
- Surely tune on/off while using AC power plug, because a repair of battery charger is
dangerous when tuning ON/OFF PBA and Connector after disassembling charger.
- Don't use as you pleases after change other material than replacement registered on SEC
System.
Otherwise engineer in charge isn't charged with problem that you don't keep this rules.

1-2. ESD(Electrostatically Sensitive Devices) Precaution

Several semiconductor may be damaged easily by static electricity. Such parts are called by ESD(Electrostatically Sensitive Devices), for example IC,BGA chip etc. Read Precaution below. You can prevent from ESD damage by static electricity.

- Remove static electricity remained your body before you touch semiconductor or parts with semiconductor. There are ways that you touch an earthed place or wear static electricity prevention string on wrist.
- Use earthed soldering steel when you connect or disconnect ESD.
- Use soldering removing tool to break static electricity. , otherwise ESD will be damaged by static electricity.
- Don't unpack until you set up ESD on product. Because most of ESD are packed by box and aluminum plate to have conductive power,they are prevented from static electricity.
- You must maintain electric contact between ESD and place due to be set up until ESD is connected completely to the proper place or a circuit board.